

Data Path : Z:\pestpcbsrv\HPCHEM1\ECD_P\Data\PP120524\
 Data File : PP068781.D
 Signal(s) : Signal #1: ECD1A.ch Signal #2: ECD2B.ch
 Acq On : 05 Dec 2024 12:09
 Operator : YP\AJ
 Sample : PB165380BS
 Misc :
 ALS Vial : 9 Sample Multiplier: 1

Instrument :
 ECD_P
 ClientSampleId :
 PB165380BS

Integration File signal 1: autoint1.e
 Integration File signal 2: autoint2.e
 Quant Time: Dec 05 23:50:43 2024
 Quant Method : Z:\pestpcbsrv\HPCHEM1\ECD_P\methods\PP110724.M
 Quant Title : GC EXTRACTABLES
 QLast Update : Fri Nov 08 11:04:08 2024
 Response via : Initial Calibration
 Integrator: ChemStation

Volume Inj. : 2 µl
 Signal #1 Phase : ZB-MR1 Signal #2 Phase: ZB-MR2
 Signal #1 Info : 30Mx0.32mmx 0.50µ Signal #2 Info : 30M x 0.32mm x 0.25µm

Compound	RT#1	RT#2	Resp#1	Resp#2	ng/ml	ng/ml
System Monitoring Compounds						
1) SA Tetrachlo...	4.758	4.050	21271309	21814388	21.915	22.529
2) SA Decachlor...	10.681	9.208	29080926	27078850	23.237	23.939
Target Compounds						
3) L1 AR-1016-1	5.923	5.157	16767514	16265927	466.593	492.204
4) L1 AR-1016-2	5.945	5.176	25909653	22394825	489.320	479.109
5) L1 AR-1016-3	6.009	5.357	16773065	12659853	506.609	468.186
6) L1 AR-1016-4	6.108	5.396	13644598	11123320	519.160	471.427
7) L1 AR-1016-5	6.402	5.615	12899508	13767158	457.300	464.445
8) L2 AR-1221-1	4.953	4.263	2153233	1739364	158.767	137.931
9) L2 AR-1221-2	5.046	4.353	2599165	2245472	257.711	229.764
10) L2 AR-1221-3	5.123	4.430	9909697	9356996	327.486	306.878
11) L3 AR-1232-1	5.123	4.430	9909697	9356996	424.952	396.456
12) L3 AR-1232-2	5.657	5.176	14227982	22394825	951.404	1027.985
13) L3 AR-1232-3	5.945	5.357	25909653	12659853	1034.149	1129.271
14) L3 AR-1232-4	6.108	5.440	13644598	13373422	1102.311	1220.591
15) L3 AR-1232-5	6.196	5.615	12213270	13767158	1228.106	1117.460
16) L4 AR-1242-1	5.923	5.157	16767514	16265927	561.284	585.321
17) L4 AR-1242-2	5.945	5.176	25909653	22394825	587.493	579.800
18) L4 AR-1242-3	6.009	5.357	16773065	12659853	602.082	594.916
19) L4 AR-1242-4	6.108	5.440	13644598	13373422	623.611	586.716
20) L4 AR-1242-5	6.843	5.971	1778737	11265724	73.258	410.389 #
21) L5 AR-1248-1	5.923	5.157	16767514	16265927	743.094	744.523
22) L5 AR-1248-2	6.196	5.396	12213270	11123320	363.375	347.940
23) L5 AR-1248-3	6.402	5.440	12899508	13373422	353.260	399.109
24) L5 AR-1248-4	6.779	5.615	12193165	13767158	284.982	354.561
25) L5 AR-1248-5	6.843	6.012	1778737	1680632	42.821	45.339
26) L6 AR-1254-1	6.779	5.971	12193165	11265724	234.997	185.775
27) L6 AR-1254-2	6.995	6.118	11504080	11012843	168.589	208.832
28) L6 AR-1254-3	7.361	6.542	5668794	23879823	79.330	286.806 #
29) L6 AR-1254-4	7.647	6.756	3934370	1873387	73.110	38.525 #
30) L6 AR-1254-5	8.062	7.176	39815605	36365684	635.355	487.256
31) L7 AR-1260-1	7.526	6.658	25463707	26801597	470.642	481.619
32) L7 AR-1260-2	7.780	6.846	29513032	31537098	463.962	476.134
33) L7 AR-1260-3	8.142	7.002	21229502	30390669	394.659	491.032
34) L7 AR-1260-4	8.380	7.477	25762968	23469048	414.009	445.021
35) L7 AR-1260-5	8.718	7.716	44653954	51618069	394.524	433.488
36) L8 AR-1262-1	8.380	7.214	25762968	24586694	347.524	316.853
37) L8 AR-1262-2	8.718	7.477	44653954	23469048	346.158	331.978
38) L8 AR-1262-3	9.067	8.002	31125614	11570546	325.306	196.619 #
39) L8 AR-1262-4	9.133	8.066	19405327	39059812	254.040	377.019 #
40) L8 AR-1262-5	9.855	8.592	13440352	13196106	251.302	260.323
41) L9 AR-1268-1	9.067	8.002	31125614	11570546	201.729	74.299 #

Data Path : Z:\pestpcbsrv\HPCHEM1\ECD_P\Data\PP120524\
 Data File : PP068781.D
 Signal(s) : Signal #1: ECD1A.ch Signal #2: ECD2B.ch
 Acq On : 05 Dec 2024 12:09
 Operator : YP\AJ
 Sample : PB165380BS
 Misc :
 ALS Vial : 9 Sample Multiplier: 1

Instrument :
 ECD_P
 ClientSampleId :
 PB165380BS

Integration File signal 1: autoint1.e
 Integration File signal 2: autoint2.e
 Quant Time: Dec 05 23:50:43 2024
 Quant Method : Z:\pestpcbsrv\HPCHEM1\ECD_P\methods\PP110724.M
 Quant Title : GC EXTRACTABLES
 QLast Update : Fri Nov 08 11:04:08 2024
 Response via : Initial Calibration
 Integrator: ChemStation

Volume Inj. : 2 µl
 Signal #1 Phase : ZB-MR1 Signal #2 Phase: ZB-MR2
 Signal #1 Info : 30Mx0.32mmx 0.50µ Signal #2 Info : 30M x 0.32mm x 0.25µm

	Compound	RT#1	RT#2	Resp#1	Resp#2	ng/ml	ng/ml
42)	L9 AR-1268-2	9.133	8.066	19405327	39059812	138.622	275.926 #
43)	L9 AR-1268-3	9.405	8.285	1120649	1049714	8.919	8.430
44)	L9 AR-1268-4	9.855	8.592	13440352	13196106	251.520	241.668
45)	L9 AR-1268-5	10.307	8.919	4996098	4722604	12.586	12.541

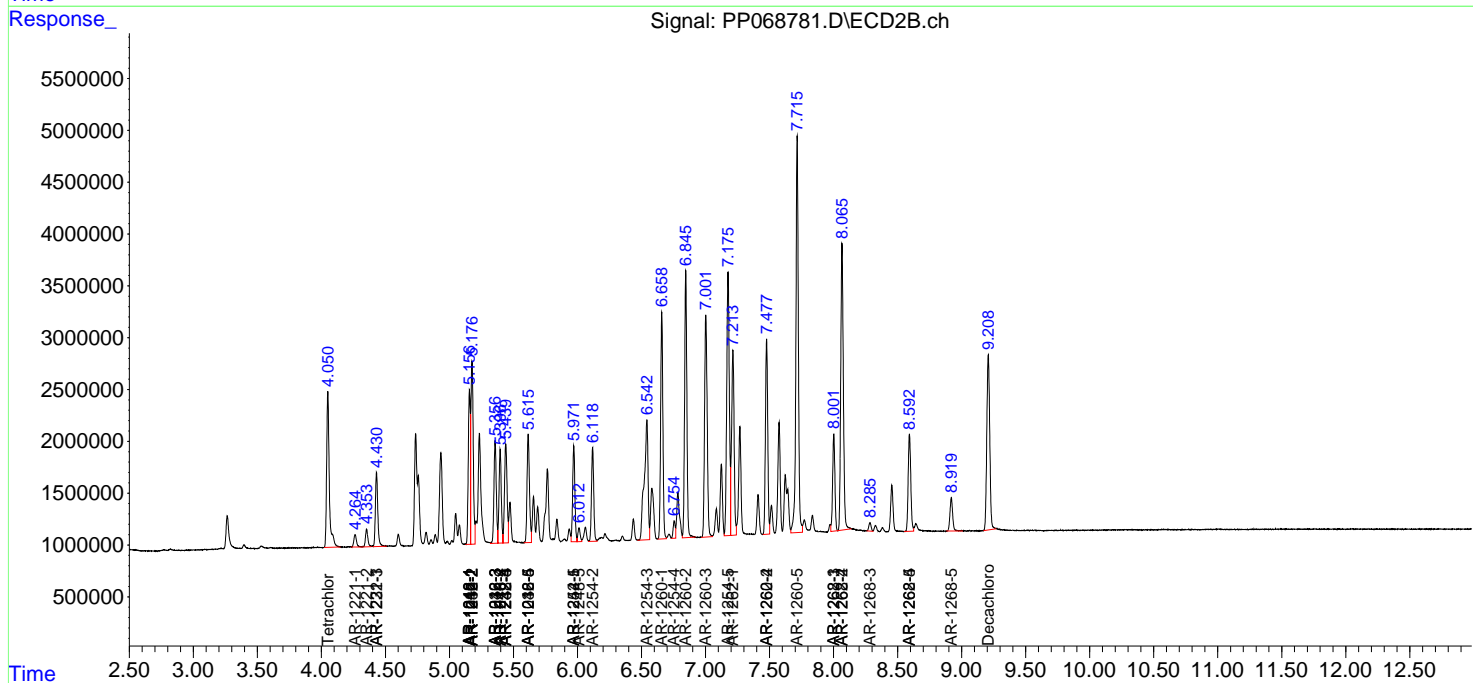
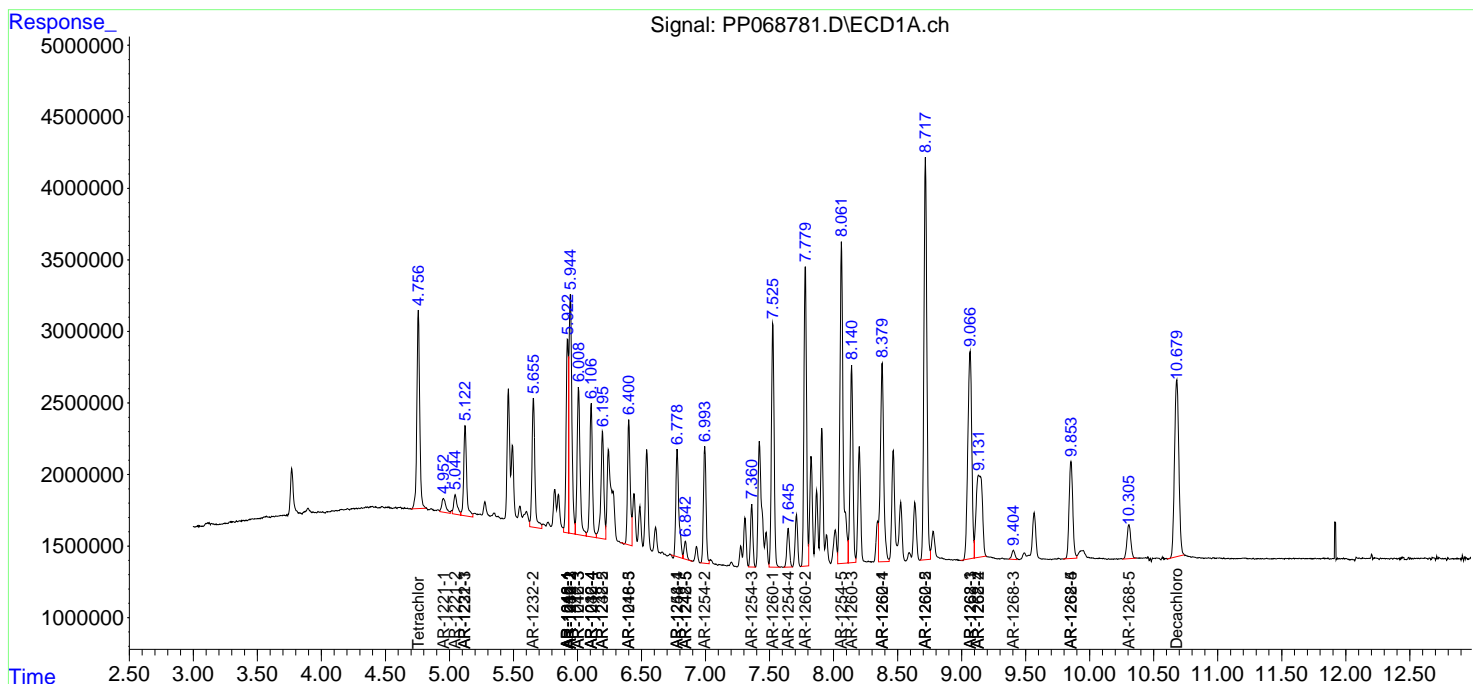
(f)=RT Delta > 1/2 Window (#)=Amounts differ by > 25% (m)=manual int.

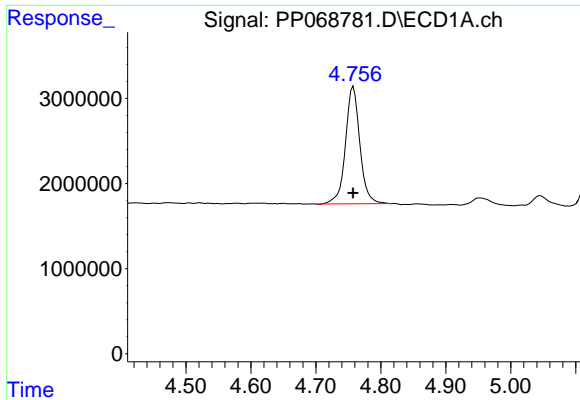
Data Path : Z:\pestpcbsrv\HPCHEM1\ECD_P\Data\PP120524\
 Data File : PP068781.D
 Signal(s) : Signal #1: ECD1A.ch Signal #2: ECD2B.ch
 Acq On : 05 Dec 2024 12:09
 Operator : YP\AJ
 Sample : PB165380BS
 Misc :
 ALS Vial : 9 Sample Multiplier: 1

Instrument :
 ECD_P
 ClientSampleId :
 PB165380BS

Integration File signal 1: autoint1.e
 Integration File signal 2: autoint2.e
 Quant Time: Dec 05 23:50:43 2024
 Quant Method : Z:\pestpcbsrv\HPCHEM1\ECD_P\methods\PP110724.M
 Quant Title : GC EXTRACTABLES
 QLast Update : Fri Nov 08 11:04:08 2024
 Response via : Initial Calibration
 Integrator: ChemStation

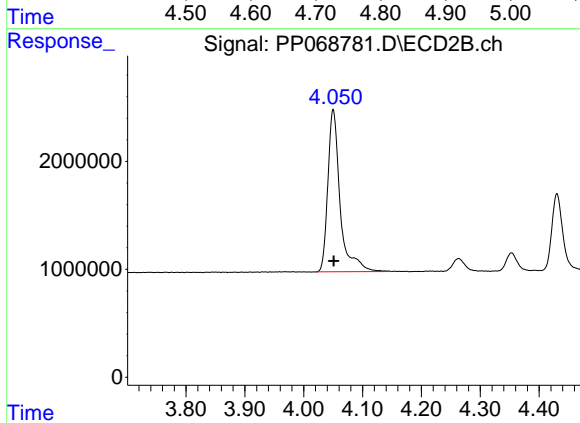
Volume Inj. : 2 µl
 Signal #1 Phase : ZB-MR1 Signal #2 Phase: ZB-MR2
 Signal #1 Info : 30Mx0.32mmx 0.50µ Signal #2 Info : 30M x 0.32mm x 0.25µm



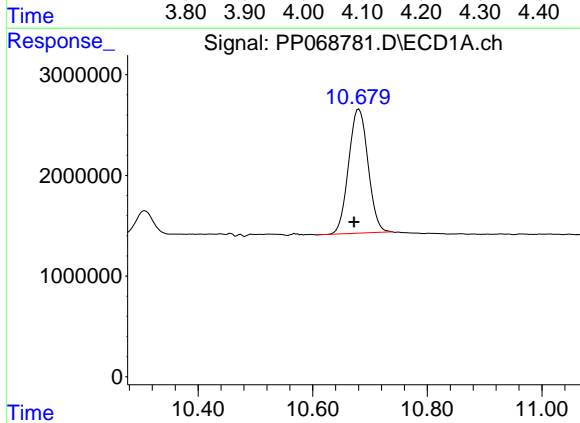


#1 Tetrachloro-m-xylene
 R.T.: 4.758 min
 Delta R.T.: 0.000 min
 Response: 21271309
 Conc: 21.92 ng/ml

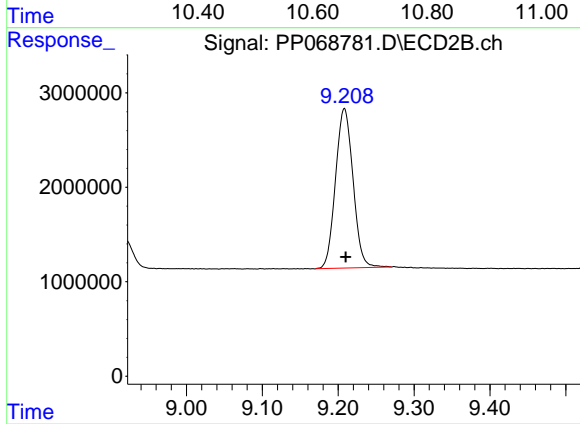
Instrument :
 ECD_P
 ClientSampleId :
 PB165380BS



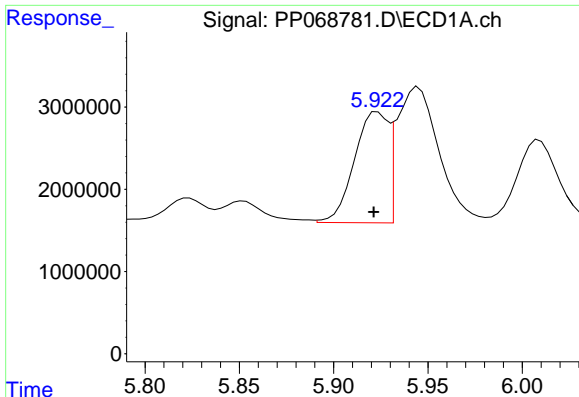
#1 Tetrachloro-m-xylene
 R.T.: 4.050 min
 Delta R.T.: 0.000 min
 Response: 21814388
 Conc: 22.53 ng/ml



#2 Decachlorobiphenyl
 R.T.: 10.681 min
 Delta R.T.: 0.009 min
 Response: 29080926
 Conc: 23.24 ng/ml



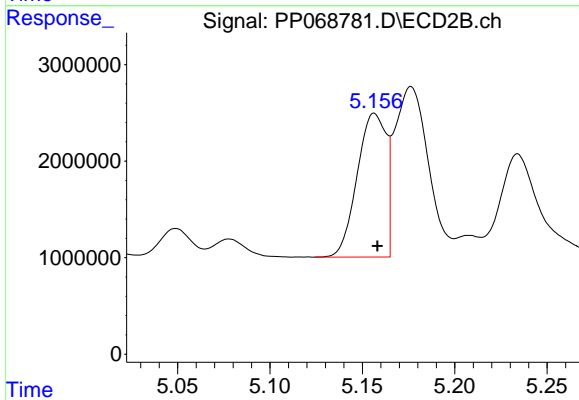
#2 Decachlorobiphenyl
 R.T.: 9.208 min
 Delta R.T.: -0.002 min
 Response: 27078850
 Conc: 23.94 ng/ml



#3 AR-1016-1

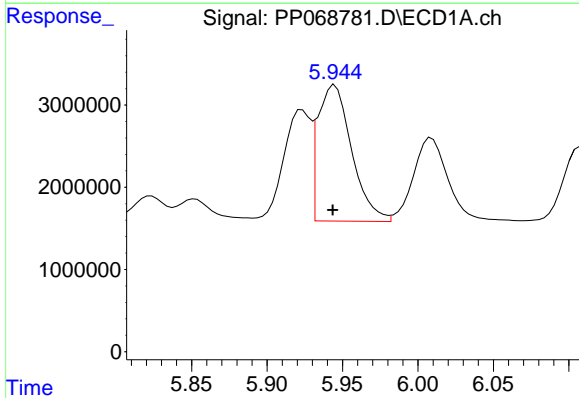
R.T.: 5.923 min
 Delta R.T.: 0.002 min
 Response: 16767514
 Conc: 466.59 ng/ml

Instrument :
 ECD_P
 ClientSampleId :
 PB165380BS



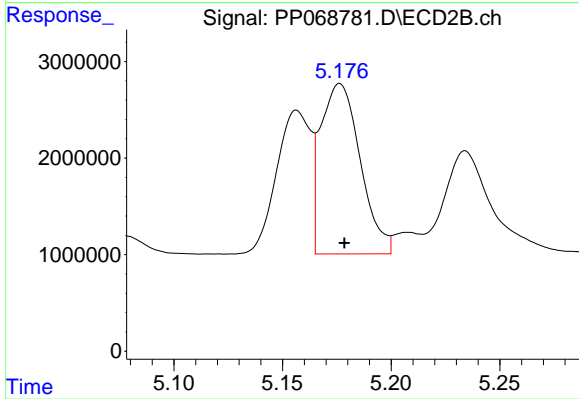
#3 AR-1016-1

R.T.: 5.157 min
 Delta R.T.: -0.002 min
 Response: 16265927
 Conc: 492.20 ng/ml



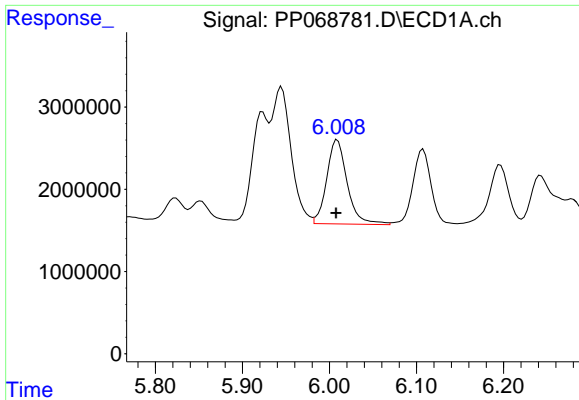
#4 AR-1016-2

R.T.: 5.945 min
 Delta R.T.: 0.001 min
 Response: 25909653
 Conc: 489.32 ng/ml



#4 AR-1016-2

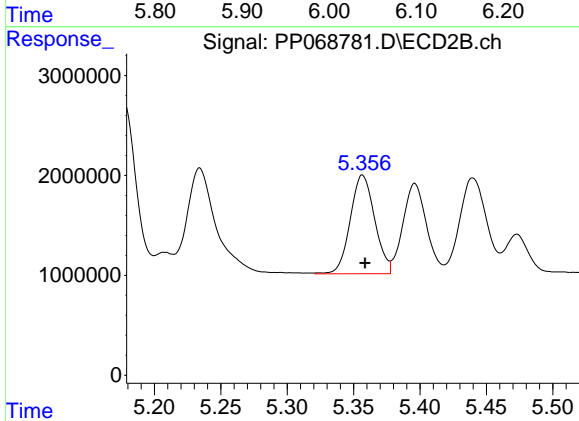
R.T.: 5.176 min
 Delta R.T.: -0.002 min
 Response: 22394825
 Conc: 479.11 ng/ml



#5 AR-1016-3

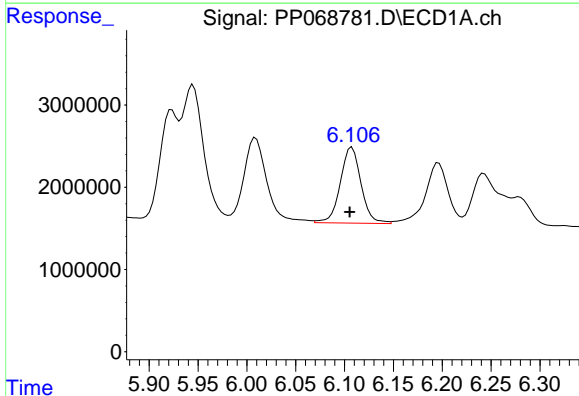
R.T.: 6.009 min
 Delta R.T.: 0.001 min
 Response: 16773065
 Conc: 506.61 ng/ml

Instrument :
 ECD_P
 ClientSampleId :
 PB165380BS



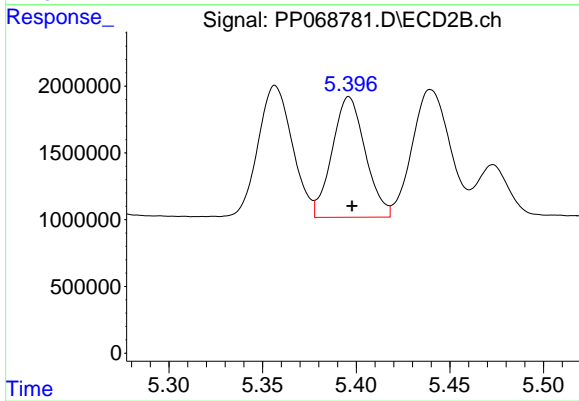
#5 AR-1016-3

R.T.: 5.357 min
 Delta R.T.: -0.002 min
 Response: 12659853
 Conc: 468.19 ng/ml



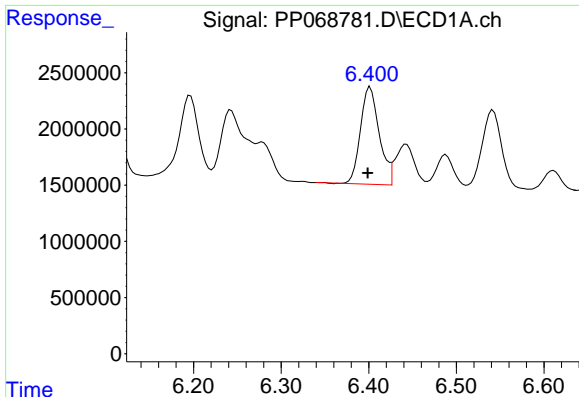
#6 AR-1016-4

R.T.: 6.108 min
 Delta R.T.: 0.002 min
 Response: 13644598
 Conc: 519.16 ng/ml



#6 AR-1016-4

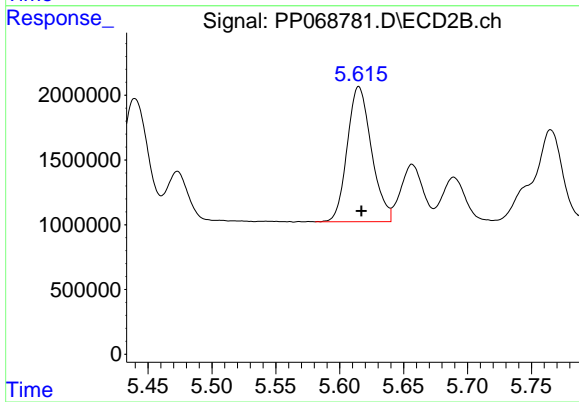
R.T.: 5.396 min
 Delta R.T.: -0.002 min
 Response: 11123320
 Conc: 471.43 ng/ml



#7 AR-1016-5

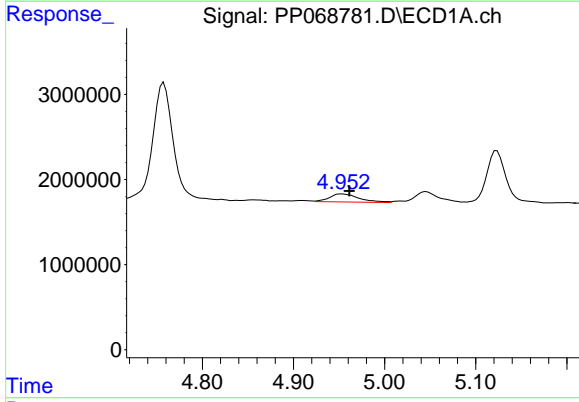
R.T.: 6.402 min
 Delta R.T.: 0.003 min
 Response: 12899508
 Conc: 457.30 ng/ml

Instrument :
 ECD_P
 ClientSampleId :
 PB165380BS



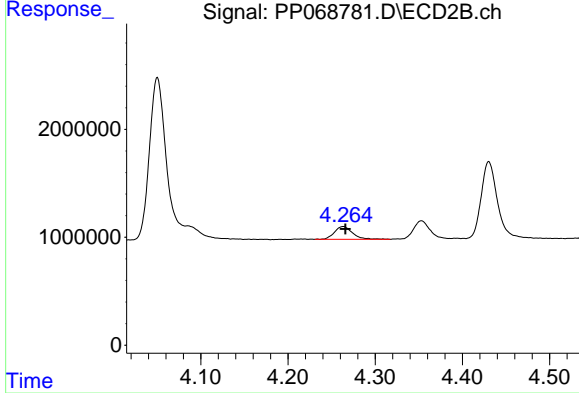
#7 AR-1016-5

R.T.: 5.615 min
 Delta R.T.: -0.002 min
 Response: 13767158
 Conc: 464.45 ng/ml



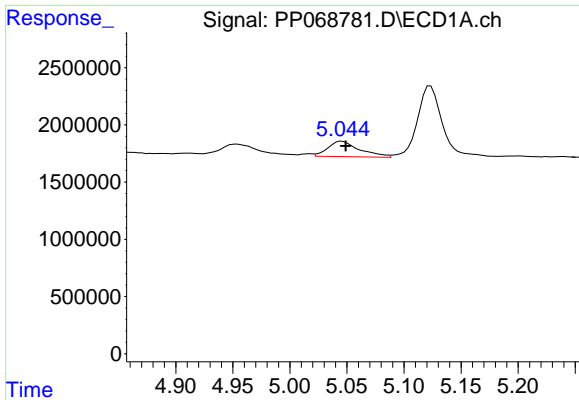
#8 AR-1221-1

R.T.: 4.953 min
 Delta R.T.: -0.008 min
 Response: 2153233
 Conc: 158.77 ng/ml



#8 AR-1221-1

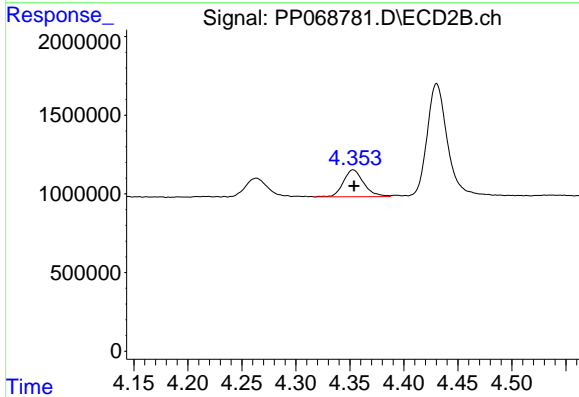
R.T.: 4.263 min
 Delta R.T.: -0.002 min
 Response: 1739364
 Conc: 137.93 ng/ml



#9 AR-1221-2

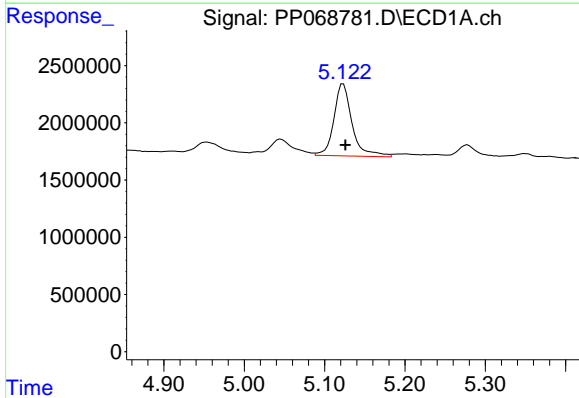
R.T.: 5.046 min
 Delta R.T.: -0.003 min
 Response: 2599165
 Conc: 257.71 ng/ml

Instrument :
 ECD_P
 ClientSampleId :
 PB165380BS



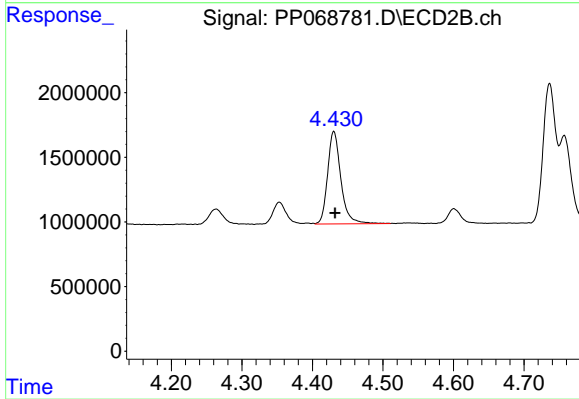
#9 AR-1221-2

R.T.: 4.353 min
 Delta R.T.: 0.000 min
 Response: 2245472
 Conc: 229.76 ng/ml



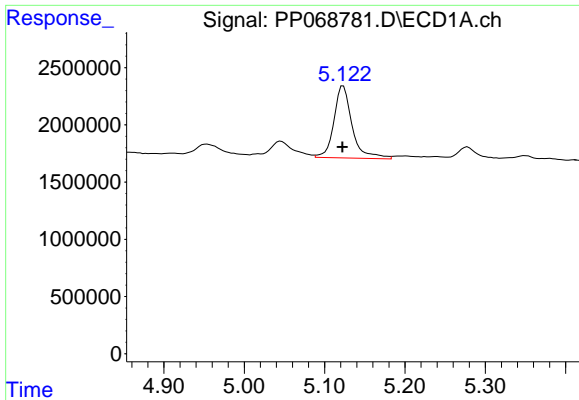
#10 AR-1221-3

R.T.: 5.123 min
 Delta R.T.: -0.003 min
 Response: 9909697
 Conc: 327.49 ng/ml



#10 AR-1221-3

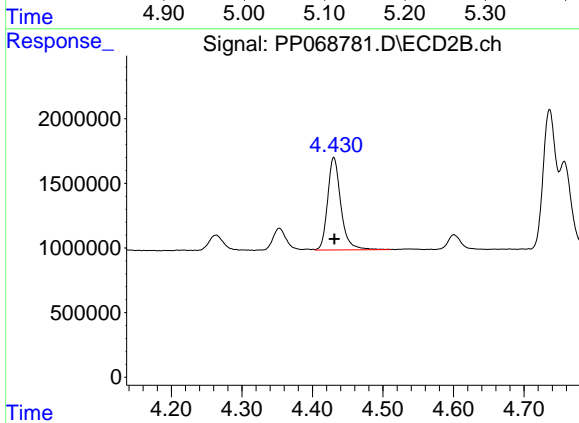
R.T.: 4.430 min
 Delta R.T.: -0.002 min
 Response: 9356996
 Conc: 306.88 ng/ml



#11 AR-1232-1

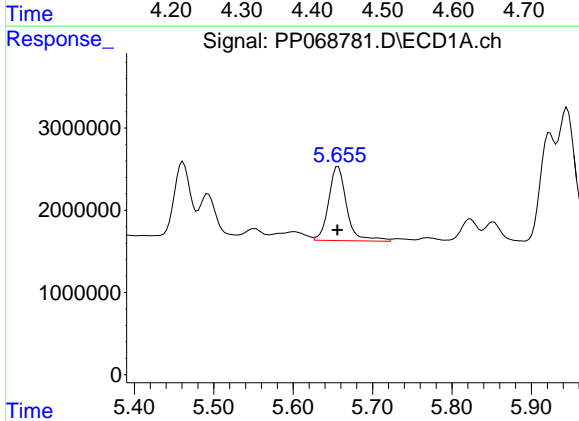
R.T.: 5.123 min
 Delta R.T.: 0.001 min
 Response: 9909697
 Conc: 424.95 ng/ml

Instrument :
 ECD_P
 ClientSampleId :
 PB165380BS



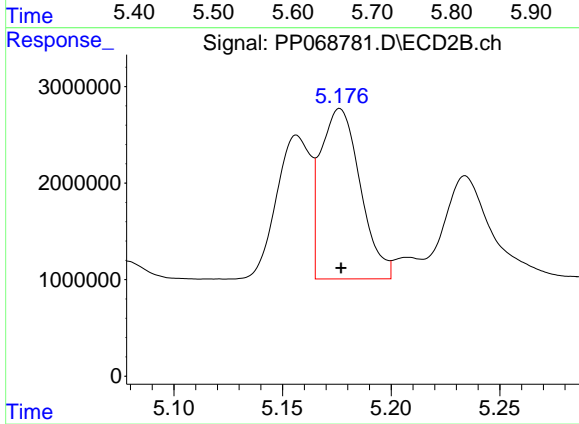
#11 AR-1232-1

R.T.: 4.430 min
 Delta R.T.: 0.000 min
 Response: 9356996
 Conc: 396.46 ng/ml



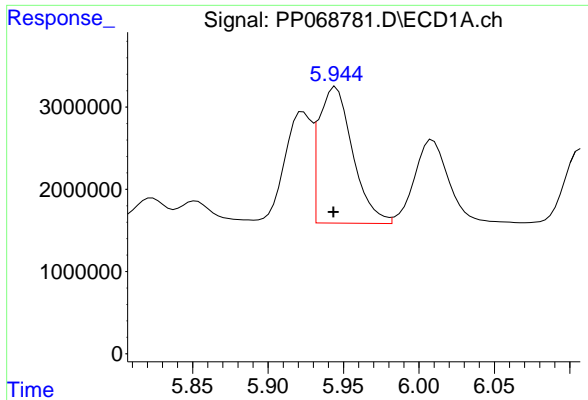
#12 AR-1232-2

R.T.: 5.657 min
 Delta R.T.: 0.000 min
 Response: 14227982
 Conc: 951.40 ng/ml



#12 AR-1232-2

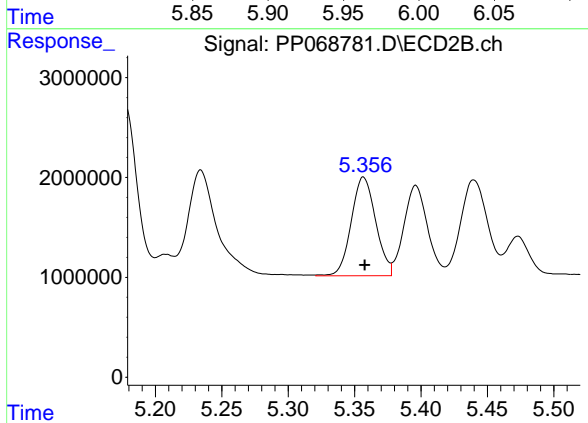
R.T.: 5.176 min
 Delta R.T.: 0.000 min
 Response: 22394825
 Conc: 1027.99 ng/ml



#13 AR-1232-3

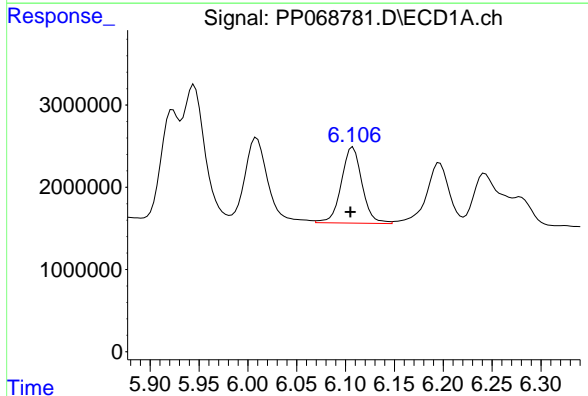
R.T.: 5.945 min
 Delta R.T.: 0.002 min
 Response: 25909653
 Conc: 1034.15 ng/ml

Instrument :
 ECD_P
 ClientSampleId :
 PB165380BS



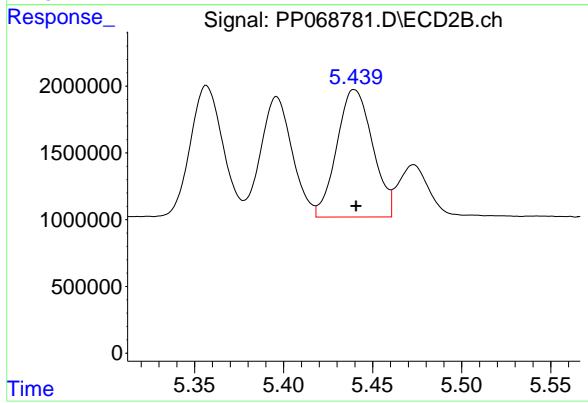
#13 AR-1232-3

R.T.: 5.357 min
 Delta R.T.: 0.000 min
 Response: 12659853
 Conc: 1129.27 ng/ml



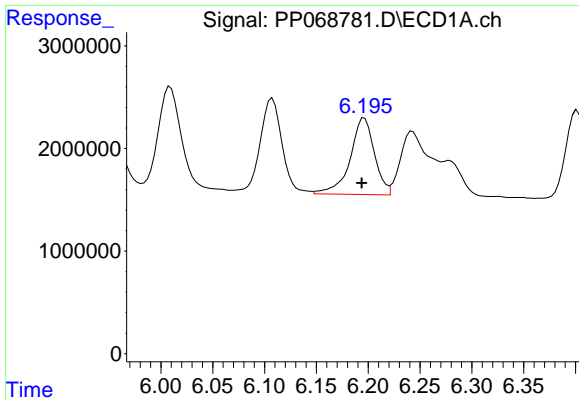
#14 AR-1232-4

R.T.: 6.108 min
 Delta R.T.: 0.002 min
 Response: 13644598
 Conc: 1102.31 ng/ml



#14 AR-1232-4

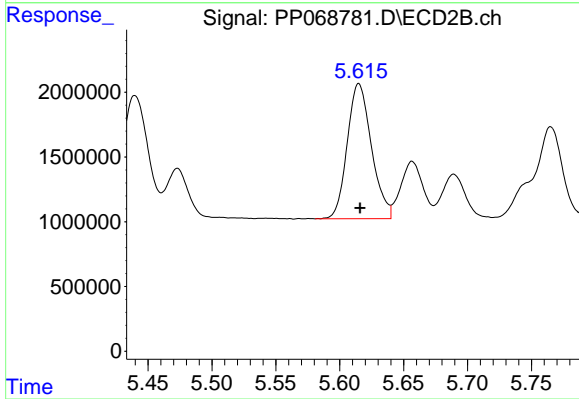
R.T.: 5.440 min
 Delta R.T.: 0.000 min
 Response: 13373422
 Conc: 1220.59 ng/ml



#15 AR-1232-5

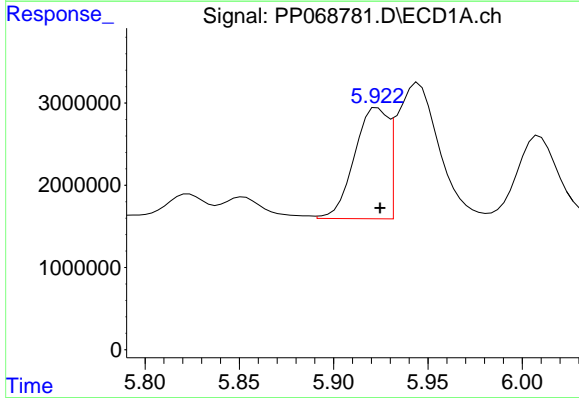
R.T.: 6.196 min
 Delta R.T.: 0.002 min
 Response: 12213270
 Conc: 1228.11 ng/ml

Instrument :
 ECD_P
 ClientSampleId :
 PB165380BS



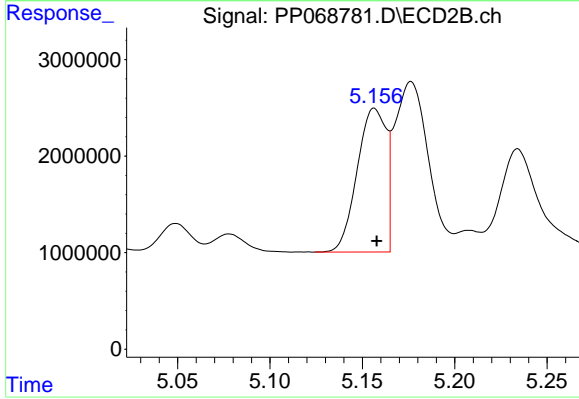
#15 AR-1232-5

R.T.: 5.615 min
 Delta R.T.: 0.000 min
 Response: 13767158
 Conc: 1117.46 ng/ml



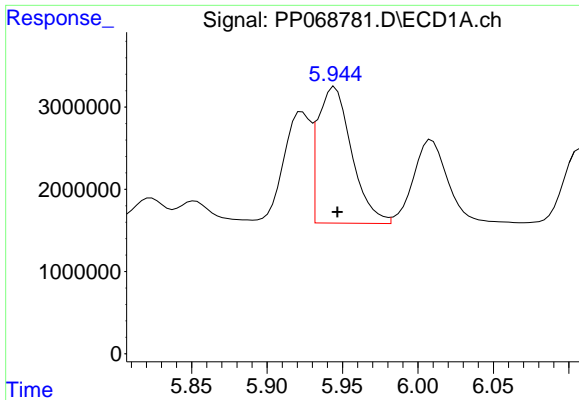
#16 AR-1242-1

R.T.: 5.923 min
 Delta R.T.: -0.001 min
 Response: 16767514
 Conc: 561.28 ng/ml



#16 AR-1242-1

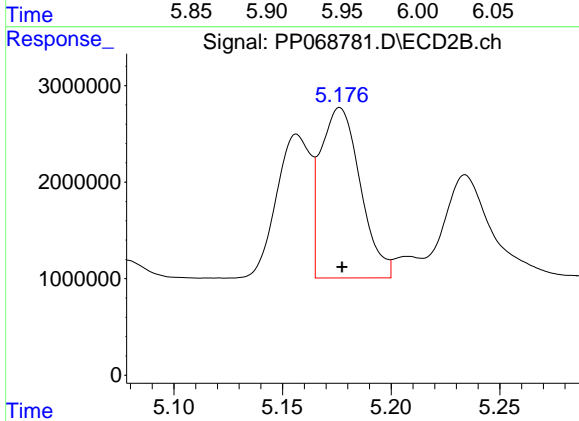
R.T.: 5.157 min
 Delta R.T.: -0.001 min
 Response: 16265927
 Conc: 585.32 ng/ml



#17 AR-1242-2

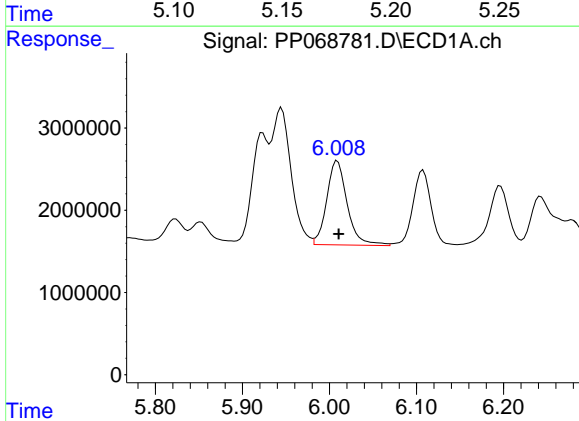
R.T.: 5.945 min
 Delta R.T.: -0.002 min
 Response: 25909653
 Conc: 587.49 ng/ml

Instrument :
 ECD_P
 ClientSampleId :
 PB165380BS



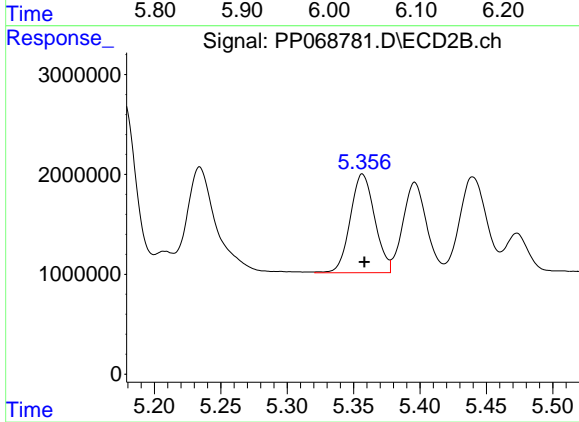
#17 AR-1242-2

R.T.: 5.176 min
 Delta R.T.: -0.001 min
 Response: 22394825
 Conc: 579.80 ng/ml



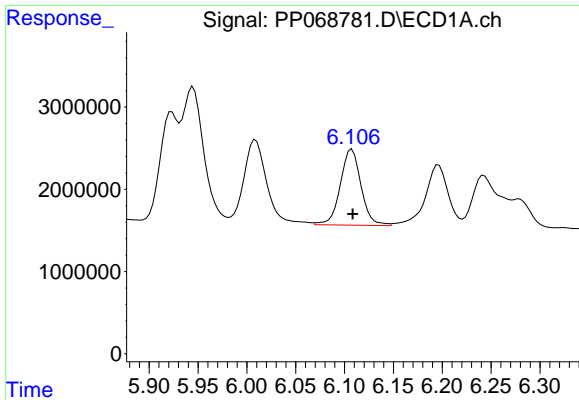
#18 AR-1242-3

R.T.: 6.009 min
 Delta R.T.: -0.001 min
 Response: 16773065
 Conc: 602.08 ng/ml



#18 AR-1242-3

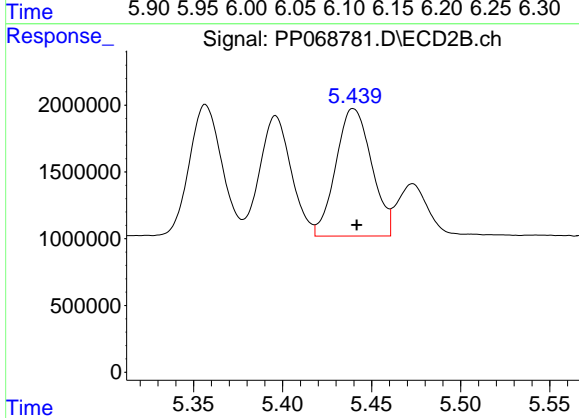
R.T.: 5.357 min
 Delta R.T.: -0.002 min
 Response: 12659853
 Conc: 594.92 ng/ml



#19 AR-1242-4

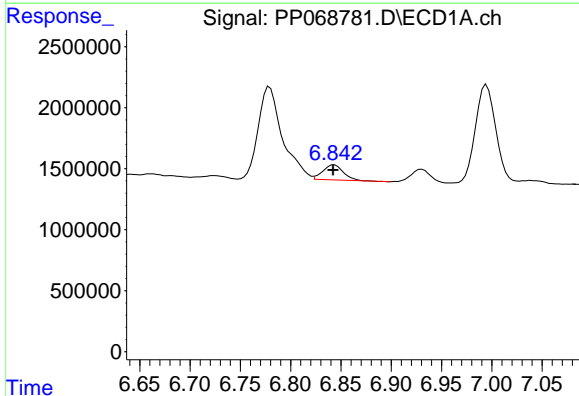
R.T.: 6.108 min
 Delta R.T.: 0.000 min
 Response: 13644598
 Conc: 623.61 ng/ml

Instrument :
 ECD_P
 ClientSampleId :
 PB165380BS



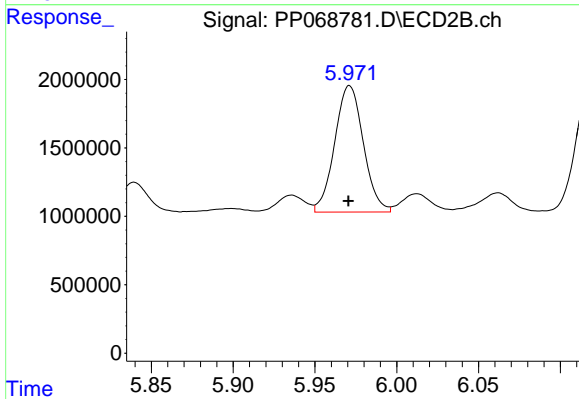
#19 AR-1242-4

R.T.: 5.440 min
 Delta R.T.: -0.002 min
 Response: 13373422
 Conc: 586.72 ng/ml



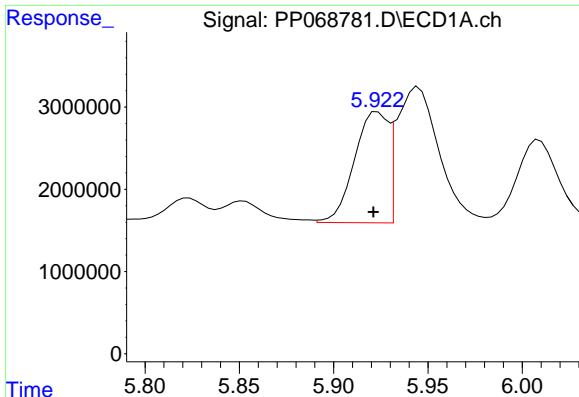
#20 AR-1242-5

R.T.: 6.843 min
 Delta R.T.: 0.001 min
 Response: 1778737
 Conc: 73.26 ng/ml



#20 AR-1242-5

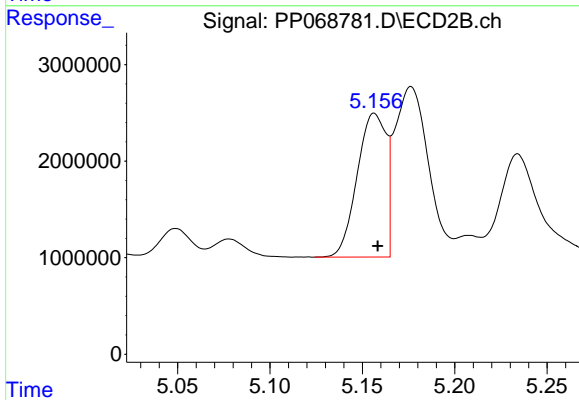
R.T.: 5.971 min
 Delta R.T.: 0.000 min
 Response: 11265724
 Conc: 410.39 ng/ml



#21 AR-1248-1

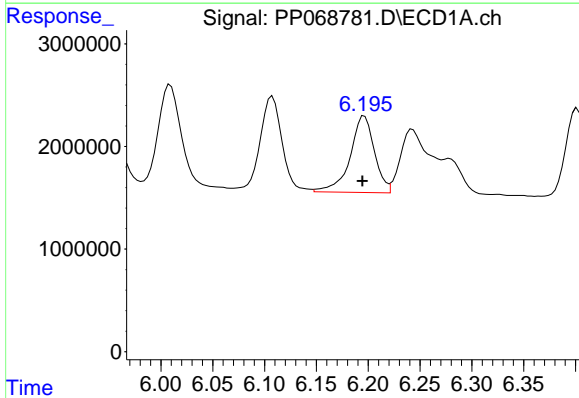
R.T.: 5.923 min
 Delta R.T.: 0.002 min
 Response: 16767514
 Conc: 743.09 ng/ml

Instrument :
 ECD_P
 ClientSampleId :
 PB165380BS



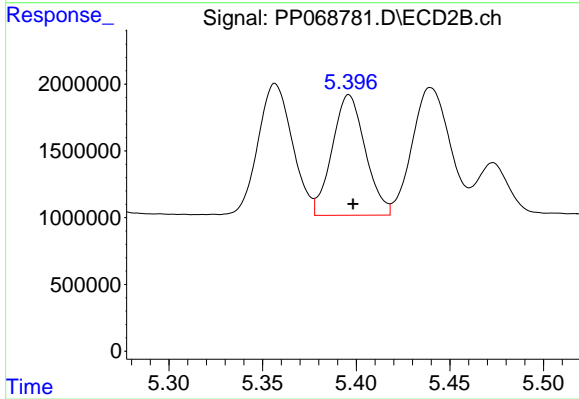
#21 AR-1248-1

R.T.: 5.157 min
 Delta R.T.: -0.002 min
 Response: 16265927
 Conc: 744.52 ng/ml



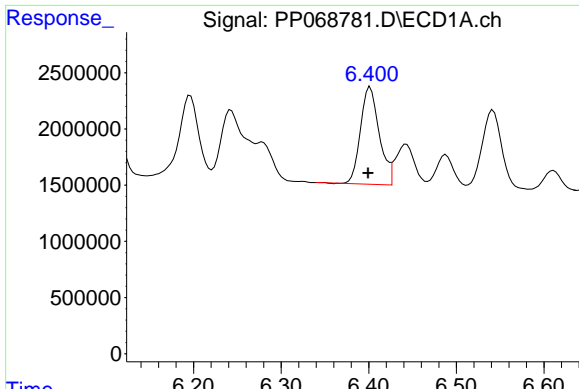
#22 AR-1248-2

R.T.: 6.196 min
 Delta R.T.: 0.002 min
 Response: 12213270
 Conc: 363.38 ng/ml



#22 AR-1248-2

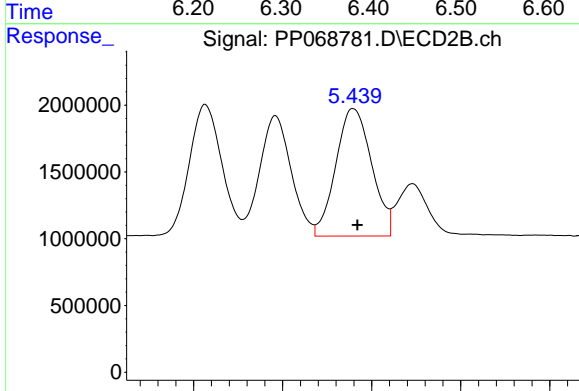
R.T.: 5.396 min
 Delta R.T.: -0.002 min
 Response: 11123320
 Conc: 347.94 ng/ml



#23 AR-1248-3

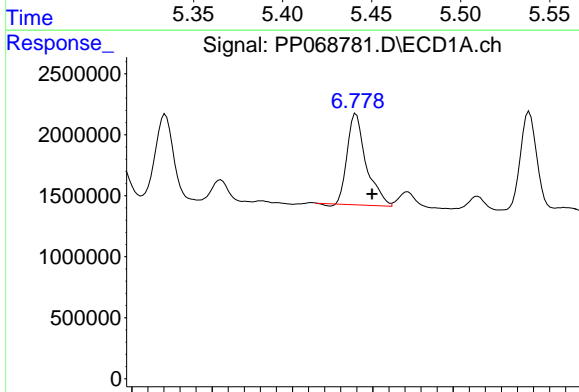
R.T.: 6.402 min
 Delta R.T.: 0.002 min
 Response: 12899508
 Conc: 353.26 ng/ml

Instrument :
 ECD_P
 ClientSampleId :
 PB165380BS



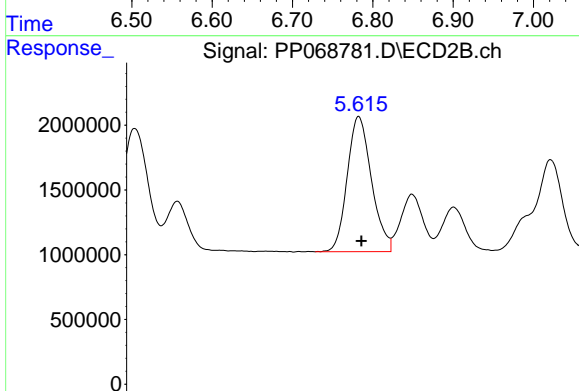
#23 AR-1248-3

R.T.: 5.440 min
 Delta R.T.: -0.002 min
 Response: 13373422
 Conc: 399.11 ng/ml



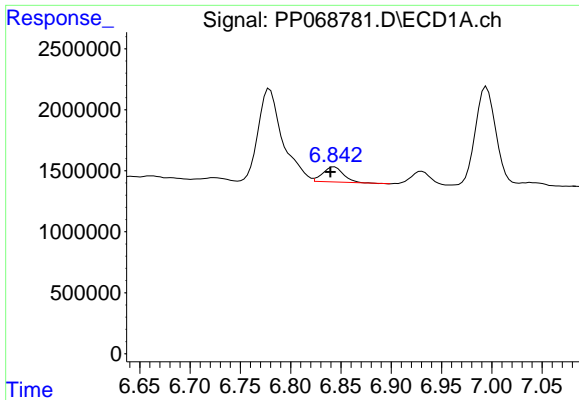
#24 AR-1248-4

R.T.: 6.779 min
 Delta R.T.: -0.020 min
 Response: 12193165
 Conc: 284.98 ng/ml



#24 AR-1248-4

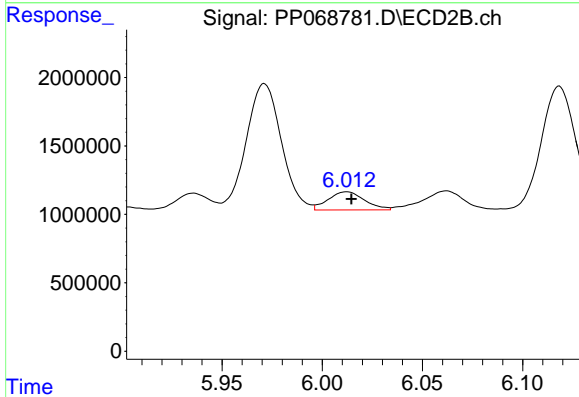
R.T.: 5.615 min
 Delta R.T.: -0.002 min
 Response: 13767158
 Conc: 354.56 ng/ml



#25 AR-1248-5

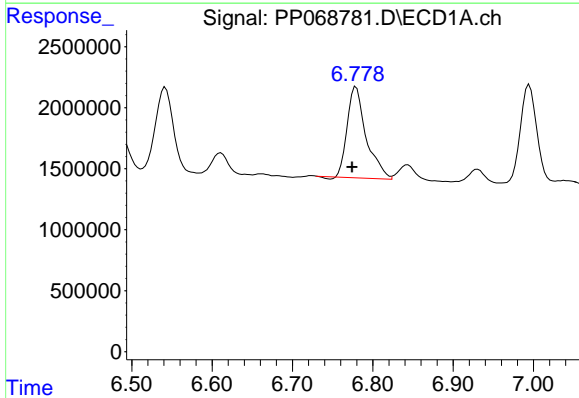
R.T.: 6.843 min
 Delta R.T.: 0.004 min
 Response: 1778737
 Conc: 42.82 ng/ml

Instrument :
 ECD_P
 ClientSampleId :
 PB165380BS



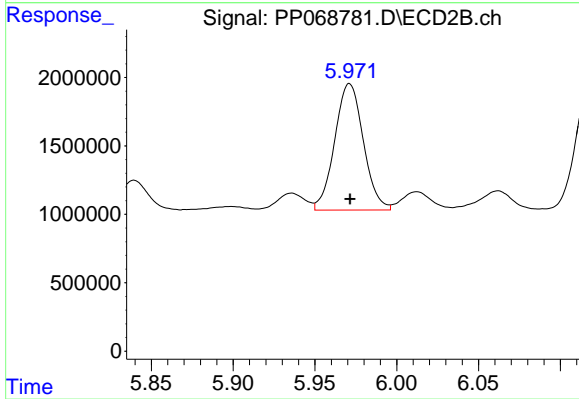
#25 AR-1248-5

R.T.: 6.012 min
 Delta R.T.: -0.002 min
 Response: 1680632
 Conc: 45.34 ng/ml



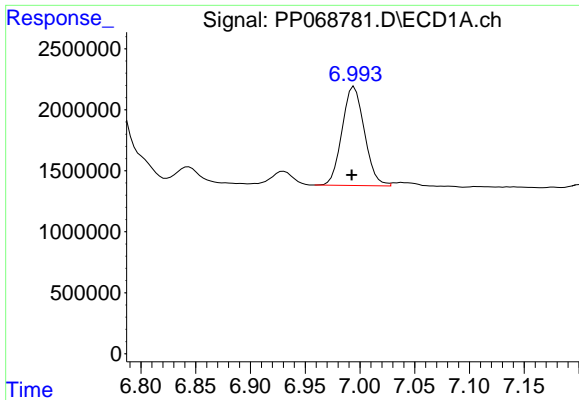
#26 AR-1254-1

R.T.: 6.779 min
 Delta R.T.: 0.005 min
 Response: 12193165
 Conc: 235.00 ng/ml



#26 AR-1254-1

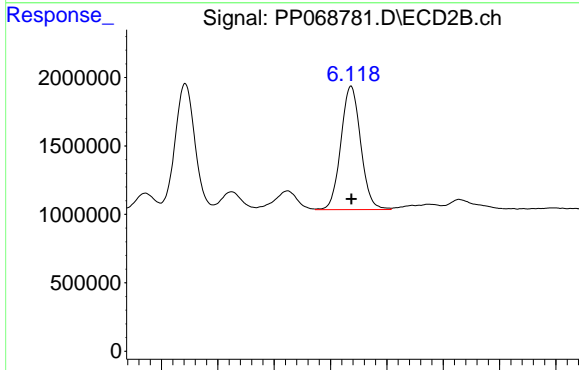
R.T.: 5.971 min
 Delta R.T.: 0.000 min
 Response: 11265724
 Conc: 185.77 ng/ml



#27 AR-1254-2

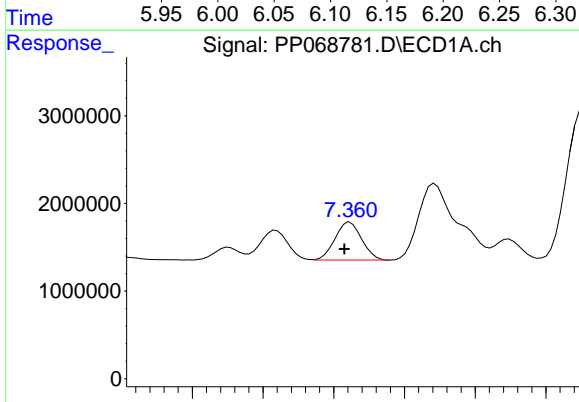
R.T.: 6.995 min
 Delta R.T.: 0.002 min
 Response: 11504080
 Conc: 168.59 ng/ml

Instrument :
 ECD_P
 ClientSampleId :
 PB165380BS



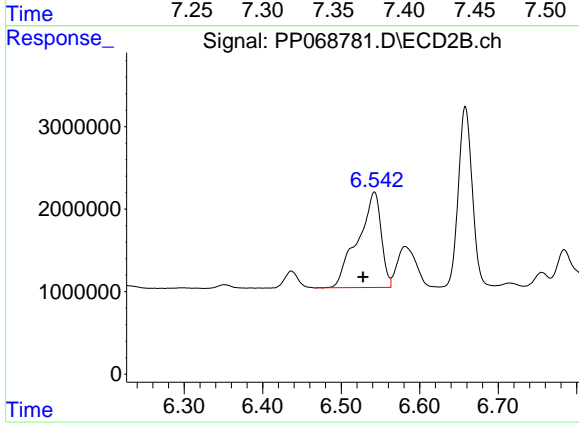
#27 AR-1254-2

R.T.: 6.118 min
 Delta R.T.: 0.000 min
 Response: 11012843
 Conc: 208.83 ng/ml



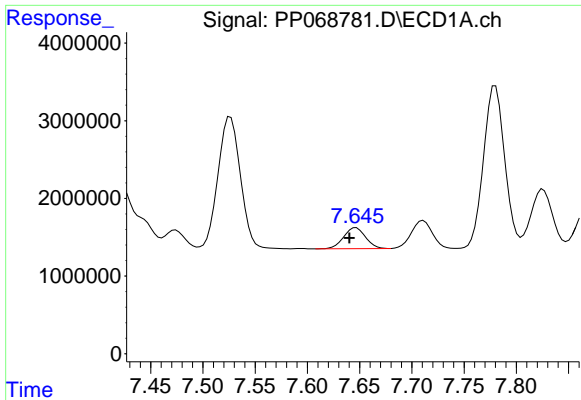
#28 AR-1254-3

R.T.: 7.361 min
 Delta R.T.: 0.004 min
 Response: 5668794
 Conc: 79.33 ng/ml



#28 AR-1254-3

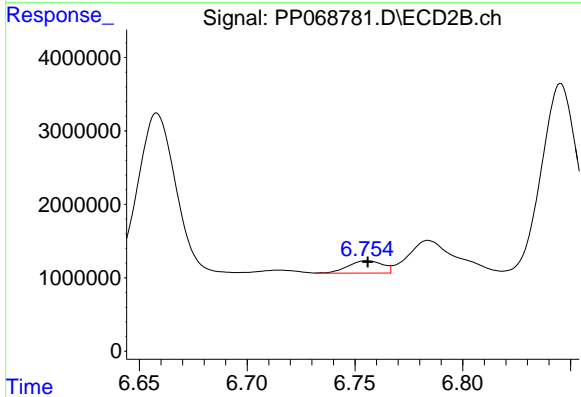
R.T.: 6.542 min
 Delta R.T.: 0.014 min
 Response: 23879823
 Conc: 286.81 ng/ml



#29 AR-1254-4

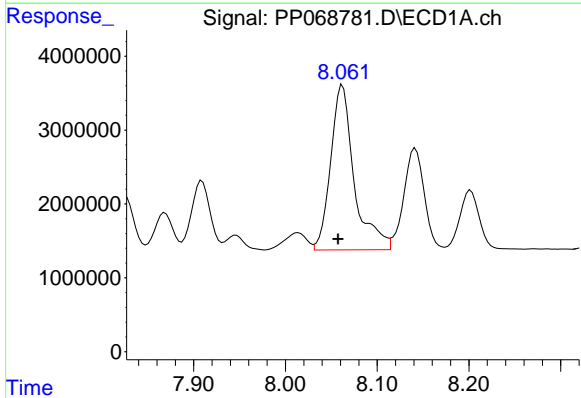
R.T.: 7.647 min
 Delta R.T.: 0.006 min
 Response: 3934370
 Conc: 73.11 ng/ml

Instrument :
 ECD_P
 ClientSampleId :
 PB165380BS



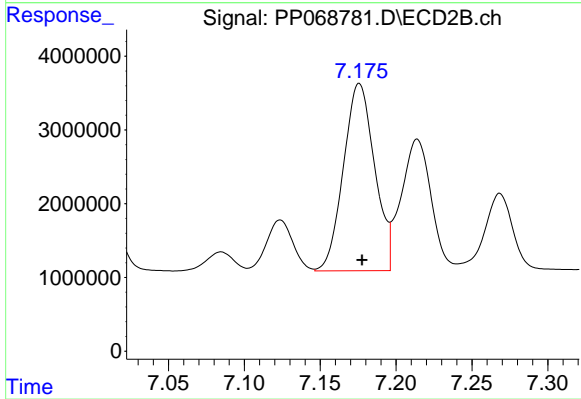
#29 AR-1254-4

R.T.: 6.756 min
 Delta R.T.: 0.000 min
 Response: 1873387
 Conc: 38.53 ng/ml



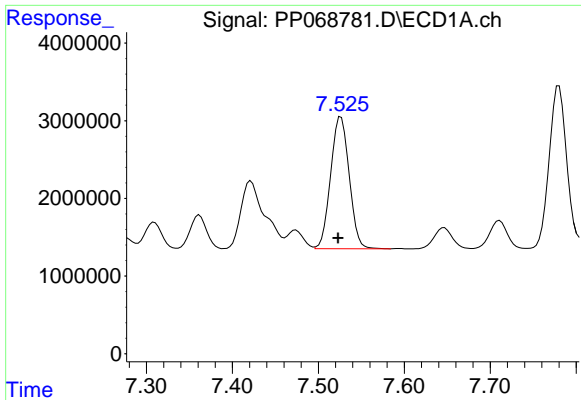
#30 AR-1254-5

R.T.: 8.062 min
 Delta R.T.: 0.005 min
 Response: 39815605
 Conc: 635.35 ng/ml



#30 AR-1254-5

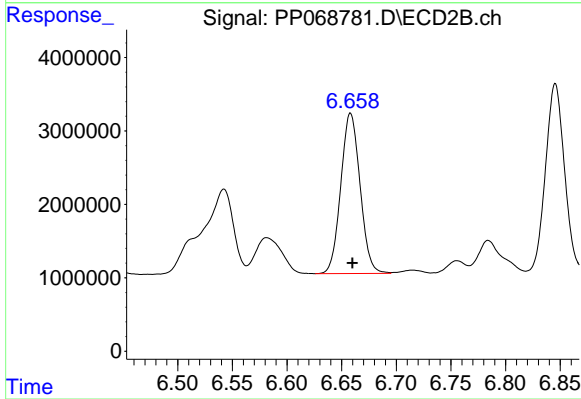
R.T.: 7.176 min
 Delta R.T.: -0.002 min
 Response: 36365684
 Conc: 487.26 ng/ml



#31 AR-1260-1

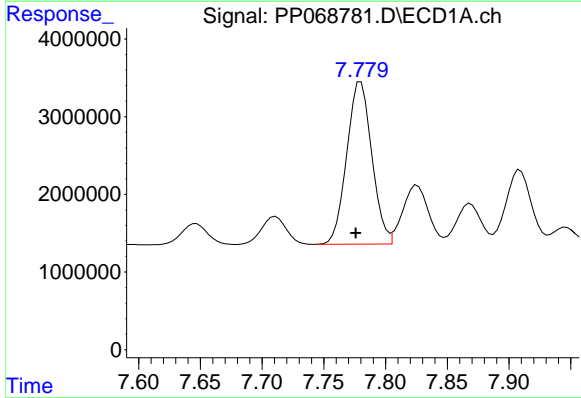
R.T.: 7.526 min
Delta R.T.: 0.003 min
Response: 25463707
Conc: 470.64 ng/ml

Instrument :
ECD_P
ClientSampleId :
PB165380BS



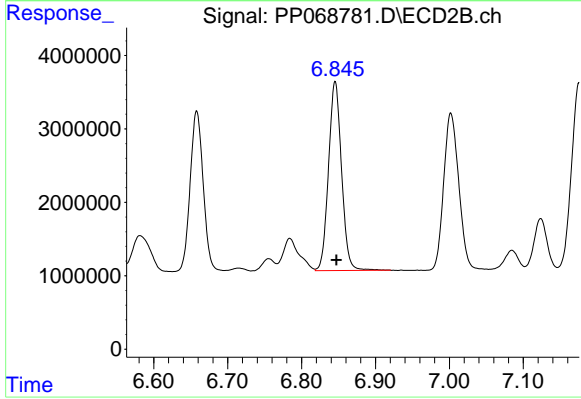
#31 AR-1260-1

R.T.: 6.658 min
Delta R.T.: -0.002 min
Response: 26801597
Conc: 481.62 ng/ml



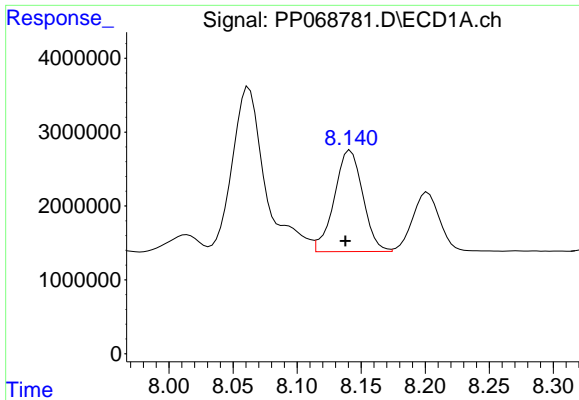
#32 AR-1260-2

R.T.: 7.780 min
Delta R.T.: 0.004 min
Response: 29513032
Conc: 463.96 ng/ml



#32 AR-1260-2

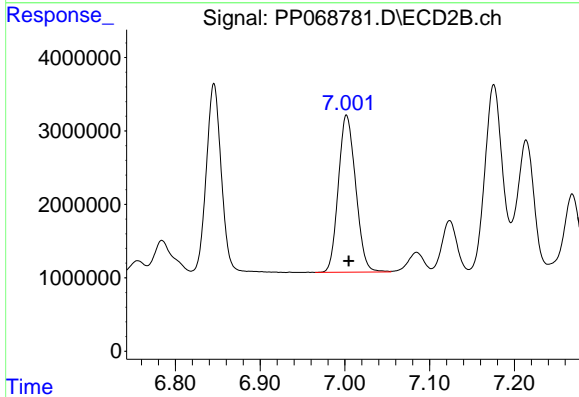
R.T.: 6.846 min
Delta R.T.: -0.001 min
Response: 31537098
Conc: 476.13 ng/ml



#33 AR-1260-3

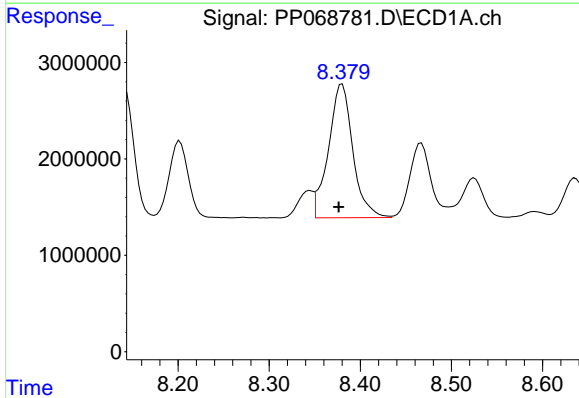
R.T.: 8.142 min
Delta R.T.: 0.004 min
Response: 21229502
Conc: 394.66 ng/ml

Instrument :
ECD_P
ClientSampleId :
PB165380BS



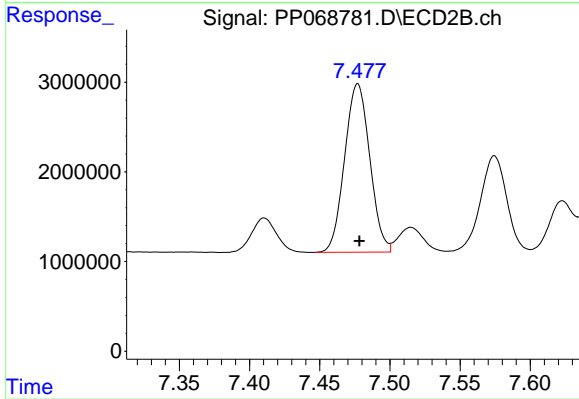
#33 AR-1260-3

R.T.: 7.002 min
Delta R.T.: -0.003 min
Response: 30390669
Conc: 491.03 ng/ml



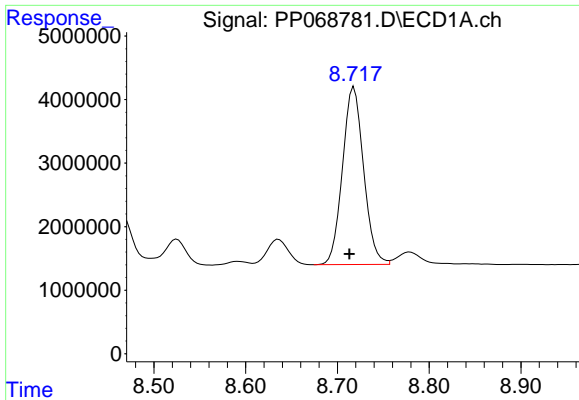
#34 AR-1260-4

R.T.: 8.380 min
Delta R.T.: 0.004 min
Response: 25762968
Conc: 414.01 ng/ml



#34 AR-1260-4

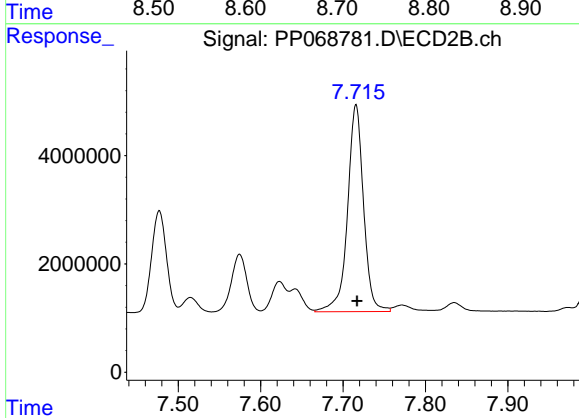
R.T.: 7.477 min
Delta R.T.: -0.001 min
Response: 23469048
Conc: 445.02 ng/ml



#35 AR-1260-5

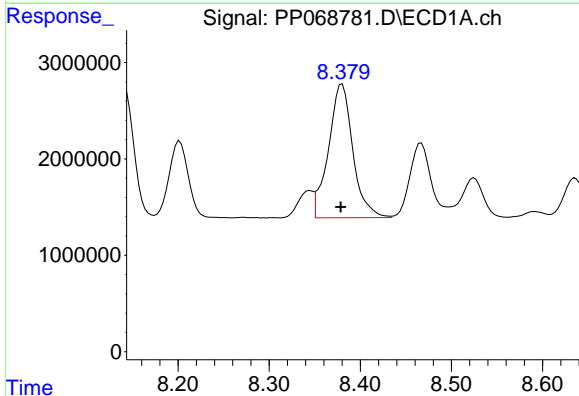
R.T.: 8.718 min
Delta R.T.: 0.005 min
Response: 44653954
Conc: 394.52 ng/ml

Instrument :
ECD_P
ClientSampleId :
PB165380BS



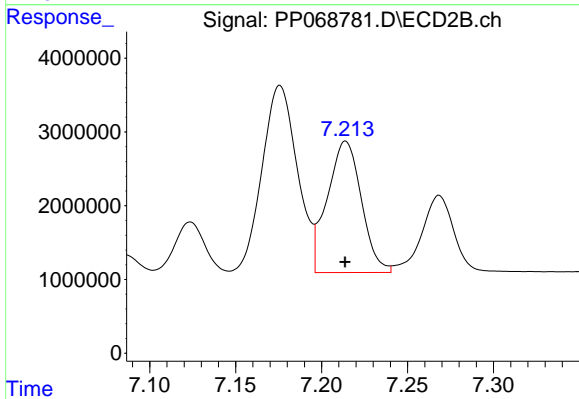
#35 AR-1260-5

R.T.: 7.716 min
Delta R.T.: -0.001 min
Response: 51618069
Conc: 433.49 ng/ml



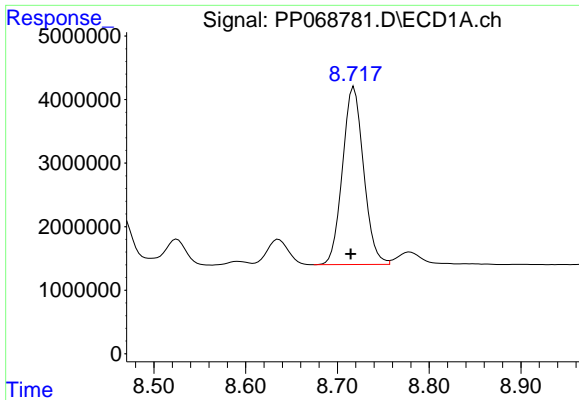
#36 AR-1262-1

R.T.: 8.380 min
Delta R.T.: 0.001 min
Response: 25762968
Conc: 347.52 ng/ml



#36 AR-1262-1

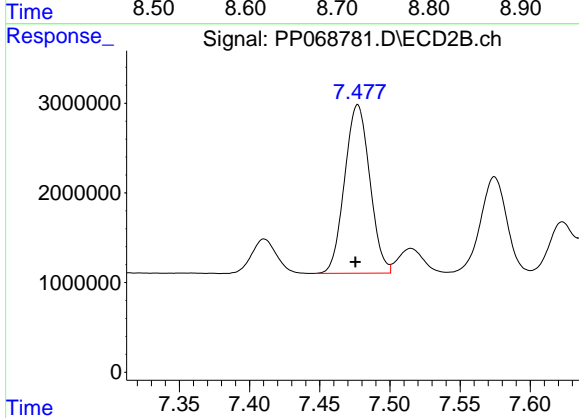
R.T.: 7.214 min
Delta R.T.: 0.000 min
Response: 24586694
Conc: 316.85 ng/ml



#37 AR-1262-2

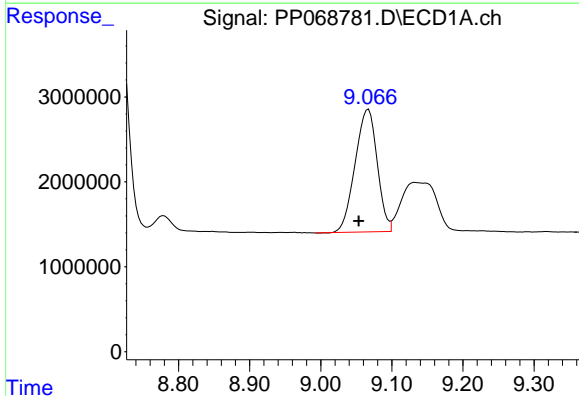
R.T.: 8.718 min
 Delta R.T.: 0.004 min
 Response: 44653954
 Conc: 346.16 ng/ml

Instrument :
 ECD_P
 ClientSampleId :
 PB165380BS



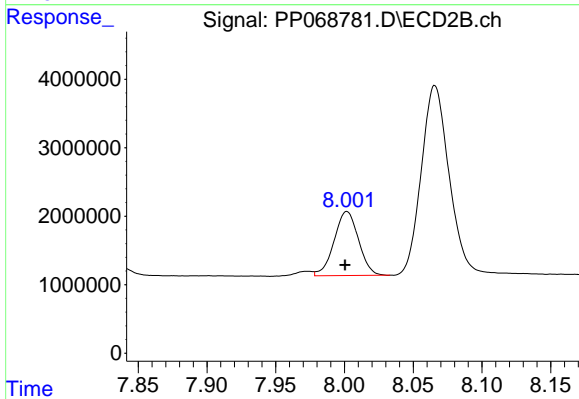
#37 AR-1262-2

R.T.: 7.477 min
 Delta R.T.: 0.002 min
 Response: 23469048
 Conc: 331.98 ng/ml



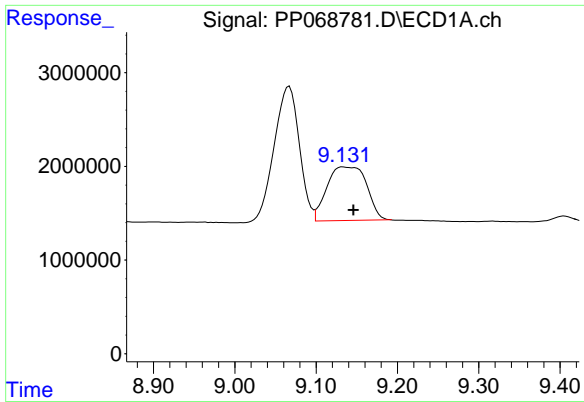
#38 AR-1262-3

R.T.: 9.067 min
 Delta R.T.: 0.013 min
 Response: 31125614
 Conc: 325.31 ng/ml



#38 AR-1262-3

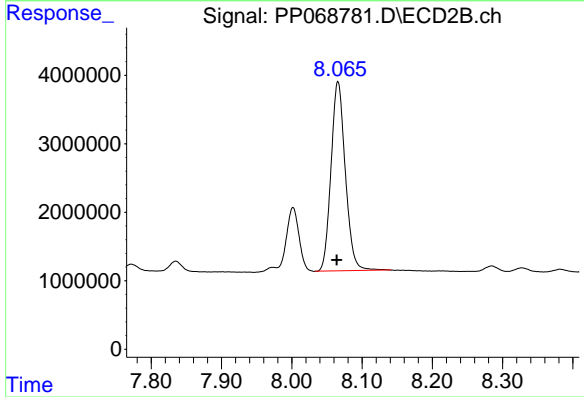
R.T.: 8.002 min
 Delta R.T.: 0.001 min
 Response: 11570546
 Conc: 196.62 ng/ml



#39 AR-1262-4

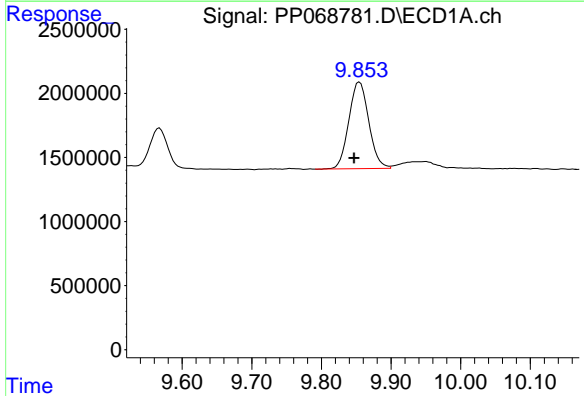
R.T.: 9.133 min
 Delta R.T.: -0.013 min
 Response: 19405327
 Conc: 254.04 ng/ml

Instrument :
 ECD_P
 ClientSampleId :
 PB165380BS



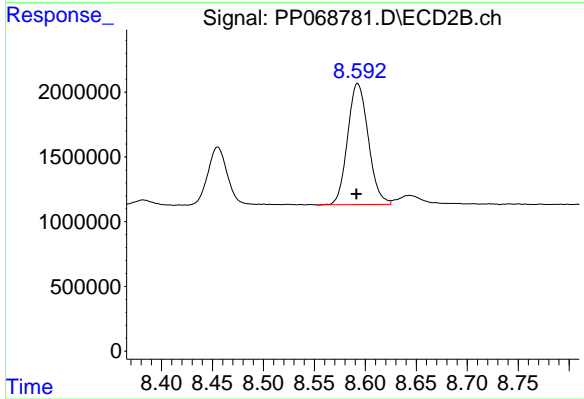
#39 AR-1262-4

R.T.: 8.066 min
 Delta R.T.: 0.002 min
 Response: 39059812
 Conc: 377.02 ng/ml



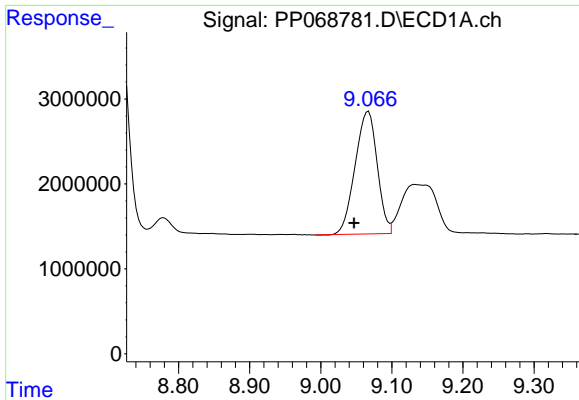
#40 AR-1262-5

R.T.: 9.855 min
 Delta R.T.: 0.008 min
 Response: 13440352
 Conc: 251.30 ng/ml



#40 AR-1262-5

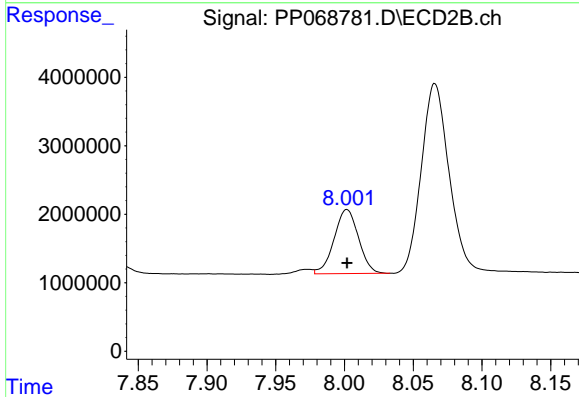
R.T.: 8.592 min
 Delta R.T.: 0.001 min
 Response: 13196106
 Conc: 260.32 ng/ml



#41 AR-1268-1

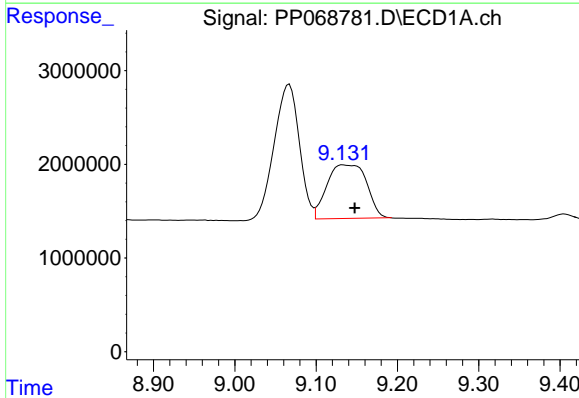
R.T.: 9.067 min
 Delta R.T.: 0.020 min
 Response: 31125614
 Conc: 201.73 ng/ml

Instrument :
 ECD_P
 ClientSampleId :
 PB165380BS



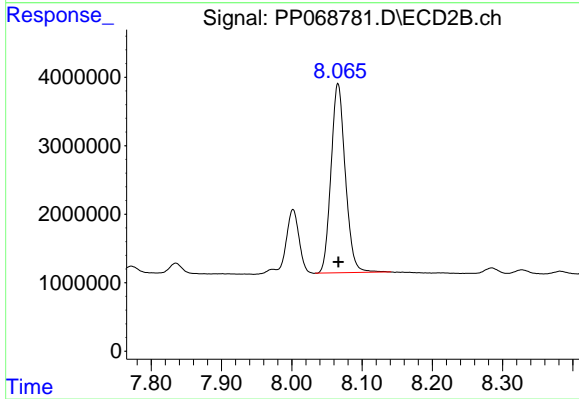
#41 AR-1268-1

R.T.: 8.002 min
 Delta R.T.: 0.000 min
 Response: 11570546
 Conc: 74.30 ng/ml



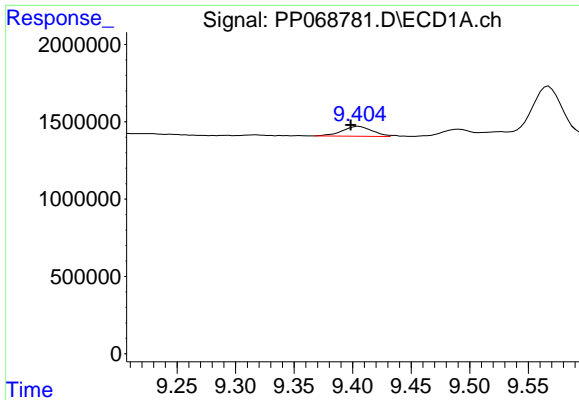
#42 AR-1268-2

R.T.: 9.133 min
 Delta R.T.: -0.014 min
 Response: 19405327
 Conc: 138.62 ng/ml



#42 AR-1268-2

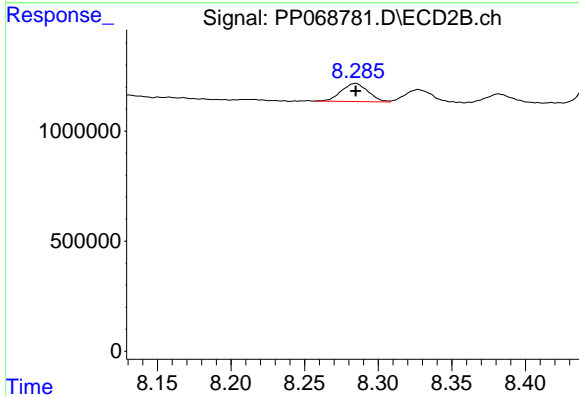
R.T.: 8.066 min
 Delta R.T.: 0.000 min
 Response: 39059812
 Conc: 275.93 ng/ml



#43 AR-1268-3

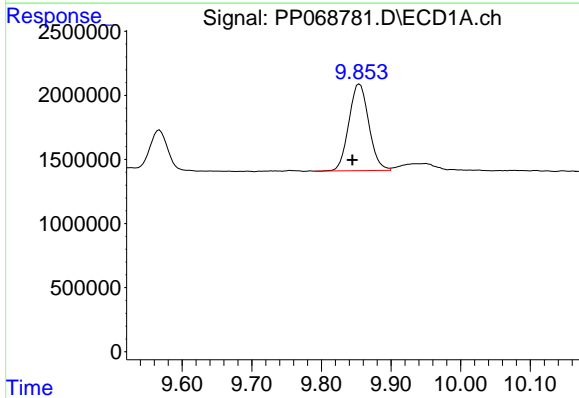
R.T.: 9.405 min
 Delta R.T.: 0.007 min
 Response: 1120649
 Conc: 8.92 ng/ml

Instrument :
 ECD_P
 ClientSampleId :
 PB165380BS



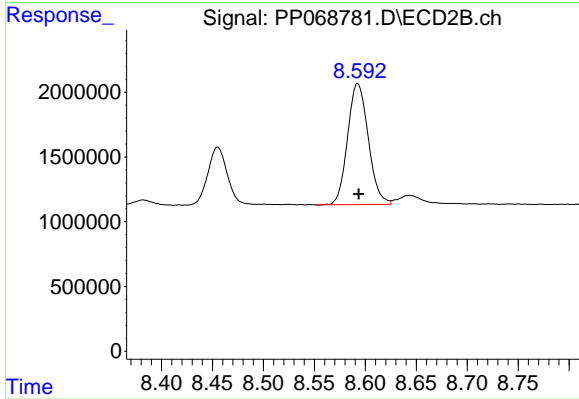
#43 AR-1268-3

R.T.: 8.285 min
 Delta R.T.: 0.000 min
 Response: 1049714
 Conc: 8.43 ng/ml



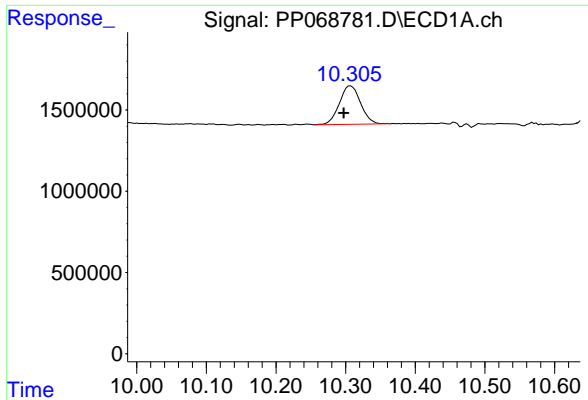
#44 AR-1268-4

R.T.: 9.855 min
 Delta R.T.: 0.010 min
 Response: 13440352
 Conc: 251.52 ng/ml



#44 AR-1268-4

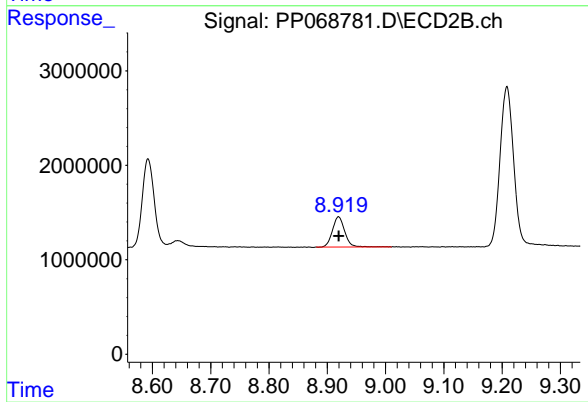
R.T.: 8.592 min
 Delta R.T.: 0.000 min
 Response: 13196106
 Conc: 241.67 ng/ml



#45 AR-1268-5

R.T.: 10.307 min
Delta R.T.: 0.010 min
Response: 4996098
Conc: 12.59 ng/ml

Instrument :
ECD_P
ClientSampleId :
PB165380BS



#45 AR-1268-5

R.T.: 8.919 min
Delta R.T.: 0.000 min
Response: 4722604
Conc: 12.54 ng/ml