

Data Path : Z:\pestpcbsrv\HPCHEM1\ECD_P\Data\PP120524\
 Data File : PP068804.D
 Signal(s) : Signal #1: ECD1A.ch Signal #2: ECD2B.ch
 Acq On : 05 Dec 2024 19:28
 Operator : YP\AJ
 Sample : AR1660CCC500
 Misc :
 ALS Vial : 3 Sample Multiplier: 1

Instrument :
 ECD_P
 ClientSampleId :
 AR1660CCC500

Integration File signal 1: autoint1.e
 Integration File signal 2: autoint2.e
 Quant Time: Dec 05 23:56:05 2024
 Quant Method : Z:\pestpcbsrv\HPCHEM1\ECD_P\methods\PP110724.M
 Quant Title : GC EXTRACTABLES
 QLast Update : Fri Nov 08 11:04:08 2024
 Response via : Initial Calibration
 Integrator: ChemStation

Volume Inj. : 2 µl
 Signal #1 Phase : ZB-MR1 Signal #2 Phase: ZB-MR2
 Signal #1 Info : 30Mx0.32mmx 0.50µ Signal #2 Info : 30M x 0.32mm x 0.25µm

Compound	RT#1	RT#2	Resp#1	Resp#2	ng/ml	ng/ml
System Monitoring Compounds						
1) SA Tetrachlo...	4.759	4.048	53346211	54492061	54.961	56.277
2) SA Decachlor...	10.678	9.205	62020100	55747169	49.557	49.282
Target Compounds						
3) L1 AR-1016-1	5.924	5.154	18759778	18579624	522.032	562.216
4) L1 AR-1016-2	5.946	5.174	27973883	25588865	528.305	547.442
5) L1 AR-1016-3	6.009	5.354	18377395	15117776	555.066	559.085
6) L1 AR-1016-4	6.108	5.394	14964912	13183925	569.396	558.760
7) L1 AR-1016-5	6.402	5.613	14496323	15610576	513.908	526.634
8) L2 AR-1221-1	4.954	4.261	2075942	2026343	153.068	160.688
9) L2 AR-1221-2	5.048	4.352	3256002	3035453	322.838	310.598
10) L2 AR-1221-3	5.124	4.428	10794310	11104665	356.720	364.196
11) L3 AR-1232-1	5.124	4.428	10794310	11104665	462.887	470.504
12) L3 AR-1232-2	5.657	5.174	14552821	25588865	973.125	1174.601
13) L3 AR-1232-3	5.946	5.354	27973883	15117776	1116.540	1348.520
14) L3 AR-1232-4	6.108	5.438	14964912	15494799	1208.976	1414.209
15) L3 AR-1232-5	6.197	5.613	13657341	15610576	1373.314	1267.088
16) L4 AR-1242-1	5.924	5.154	18759778	18579624	627.974	668.578
17) L4 AR-1242-2	5.946	5.174	27973883	25588865	634.299	662.494
18) L4 AR-1242-3	6.009	5.354	18377395	15117776	659.671	710.420
19) L4 AR-1242-4	6.108	5.438	14964912	15494799	683.955	679.785
20) L4 AR-1242-5	6.844	5.968	4228819	15920208	174.166	579.943 #
21) L5 AR-1248-1	5.924	5.154	18759778	18579624	831.386	850.426
22) L5 AR-1248-2	6.197	5.394	13657341	13183925	406.340	412.396
23) L5 AR-1248-3	6.402	5.438	14496323	15494799	396.989	462.418
24) L5 AR-1248-4	6.779	5.613	17641095	15610576	412.313	402.036
25) L5 AR-1248-5	6.844	6.009	4228819	4047876	101.803	109.201
26) L6 AR-1254-1	6.779	5.968	17641095	15920208	339.995	262.528
27) L6 AR-1254-2	6.996	6.115	12594594	11867786	184.570	225.044
28) L6 AR-1254-3	7.361	6.539	7109251	26865513	99.489	322.665 #
29) L6 AR-1254-4	7.645	6.753	4903299	3301418	91.115	67.892 #
30) L6 AR-1254-5	8.062	7.173	40385588	35719341	644.450	478.596 #
31) L7 AR-1260-1	7.526	6.655	26715364	28764811	493.776	516.898
32) L7 AR-1260-2	7.780	6.842	30769385	33780523	483.713	510.004
33) L7 AR-1260-3	8.142	7.000	25819545	31430451	479.989	507.832
34) L7 AR-1260-4	8.380	7.474	29215497	26885763	469.491	509.808
35) L7 AR-1260-5	8.717	7.713	53410075	59133920	471.885	496.607
36) L8 AR-1262-1	8.380	7.211	29215497	29003210	394.096	373.770
37) L8 AR-1262-2	8.717	7.474	53410075	26885763	414.036	380.309
38) L8 AR-1262-3	9.064	7.999	37011673	15306447	386.823	260.104 #
39) L8 AR-1262-4	9.148	8.063	26030460	44784890	340.772	432.280 #
40) L8 AR-1262-5	9.853	8.590	19417086	18677872	363.053	368.463
41) L9 AR-1268-1	9.064	7.999	37011673	15306447	239.878	98.288 #

Data Path : Z:\pestpcbsrv\HPCHEM1\ECD_P\Data\PP120524\
 Data File : PP068804.D
 Signal(s) : Signal #1: ECD1A.ch Signal #2: ECD2B.ch
 Acq On : 05 Dec 2024 19:28
 Operator : YP\AJ
 Sample : AR1660CCC500
 Misc :
 ALS Vial : 3 Sample Multiplier: 1

Instrument :
 ECD_P
 ClientSampleId :
 AR1660CCC500

Integration File signal 1: autoint1.e
 Integration File signal 2: autoint2.e
 Quant Time: Dec 05 23:56:05 2024
 Quant Method : Z:\pestpcbsrv\HPCHEM1\ECD_P\methods\PP110724.M
 Quant Title : GC EXTRACTABLES
 QLast Update : Fri Nov 08 11:04:08 2024
 Response via : Initial Calibration
 Integrator: ChemStation

Volume Inj. : 2 µl
 Signal #1 Phase : ZB-MR1 Signal #2 Phase: ZB-MR2
 Signal #1 Info : 30Mx0.32mmx 0.50µ Signal #2 Info : 30M x 0.32mm x 0.25µm

	Compound	RT#1	RT#2	Resp#1	Resp#2	ng/ml	ng/ml
42)	L9 AR-1268-2	9.148	8.063	26030460	44784890	185.949	316.369 #
43)	L9 AR-1268-3	9.405	8.281	799312	936588	6.362	7.522
44)	L9 AR-1268-4	9.853	8.590	19417086	18677872	363.367	342.058
45)	L9 AR-1268-5	10.303	8.915	5947134	5631216	14.981	14.954

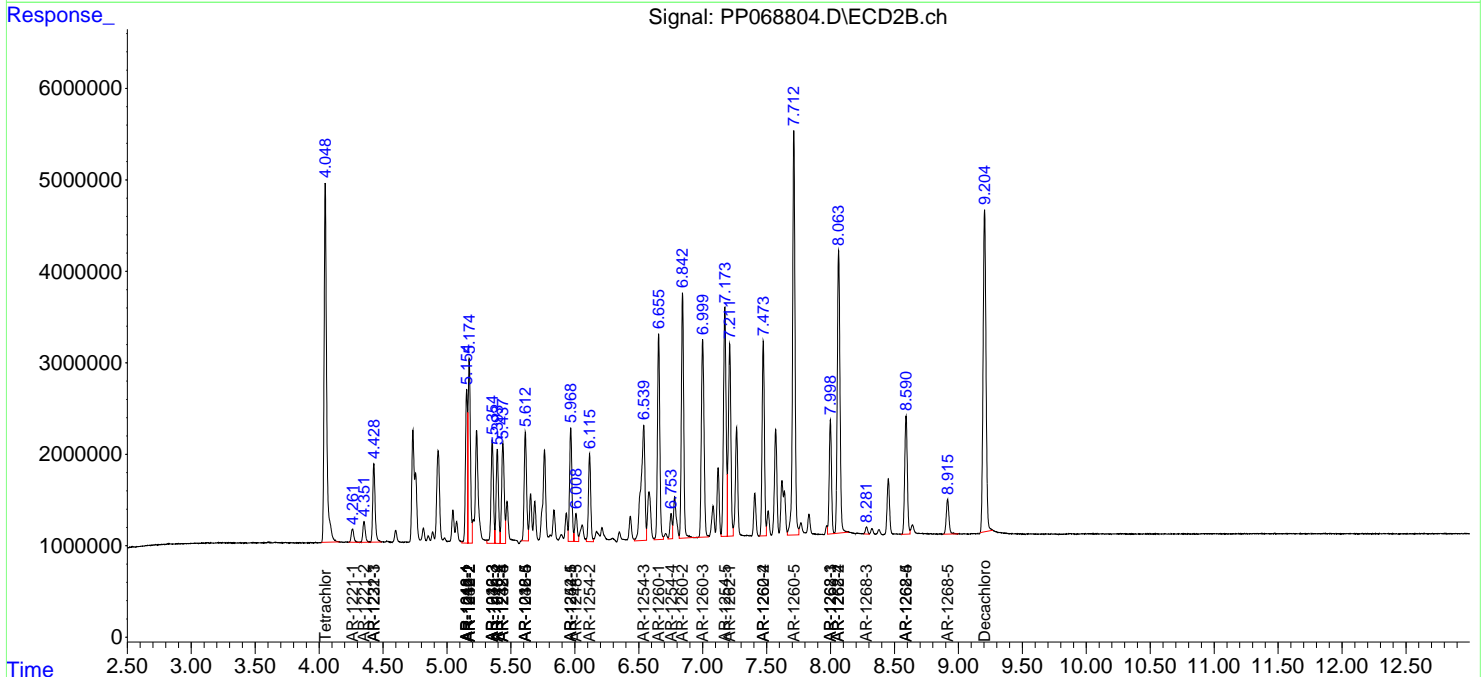
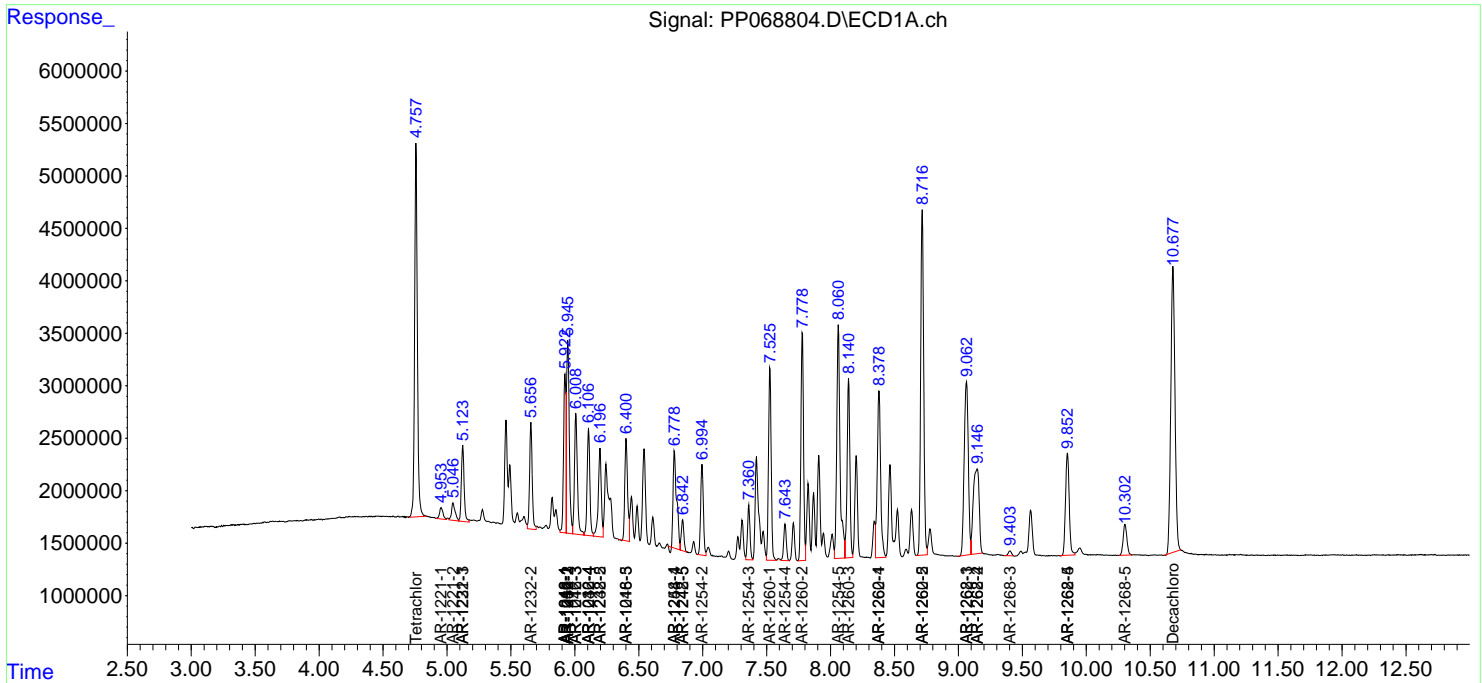
(f)=RT Delta > 1/2 Window (#)=Amounts differ by > 25% (m)=manual int.

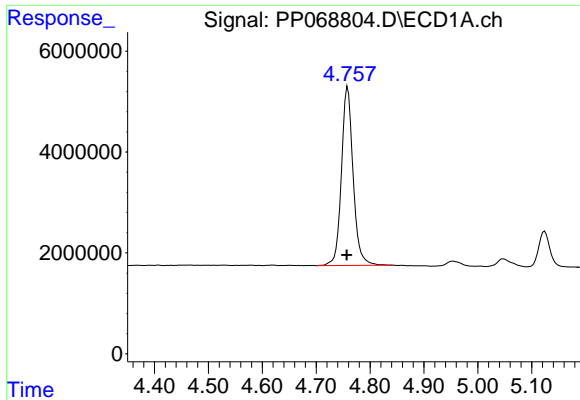
Data Path : Z:\pestpcbsrv\HPCHEM1\ECD_P\Data\PP120524\
 Data File : PP068804.D
 Signal(s) : Signal #1: ECD1A.ch Signal #2: ECD2B.ch
 Acq On : 05 Dec 2024 19:28
 Operator : YP\AJ
 Sample : AR1660CCC500
 Misc :
 ALS Vial : 3 Sample Multiplier: 1

Instrument :
 ECD_P
ClientSampleId :
 AR1660CCC500

Integration File signal 1: autoint1.e
 Integration File signal 2: autoint2.e
 Quant Time: Dec 05 23:56:05 2024
 Quant Method : Z:\pestpcbsrv\HPCHEM1\ECD_P\methods\PP110724.M
 Quant Title : GC EXTRACTABLES
 QLast Update : Fri Nov 08 11:04:08 2024
 Response via : Initial Calibration
 Integrator: ChemStation

Volume Inj. : 2 µl
 Signal #1 Phase : ZB-MR1 Signal #2 Phase: ZB-MR2
 Signal #1 Info : 30Mx0.32mmx 0.50µ Signal #2 Info : 30M x 0.32mm x 0.25µm

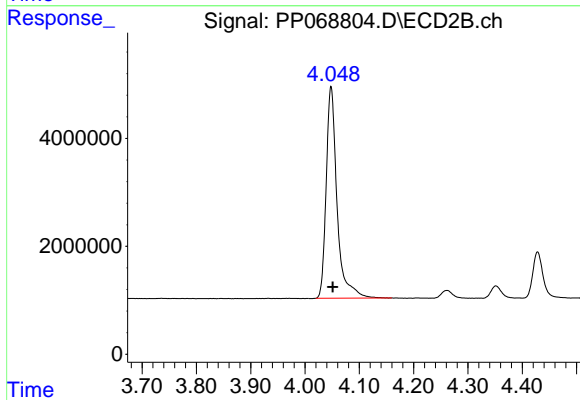




#1 Tetrachloro-m-xylene

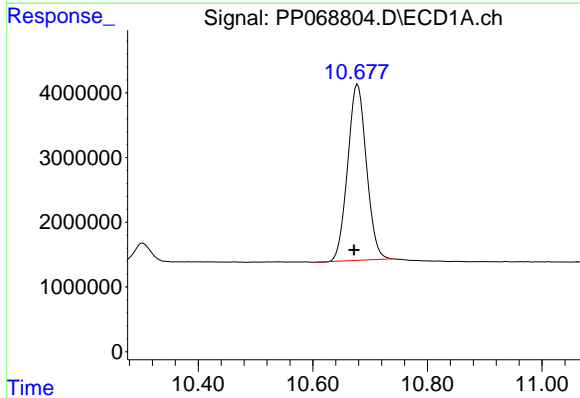
R.T.: 4.759 min
Delta R.T.: 0.002 min
Response: 53346211
Conc: 54.96 ng/ml

Instrument :
ECD_P
ClientSampleId :
AR1660CCC500



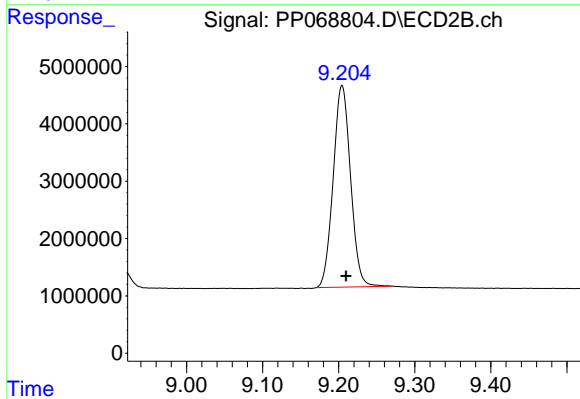
#1 Tetrachloro-m-xylene

R.T.: 4.048 min
Delta R.T.: -0.003 min
Response: 54492061
Conc: 56.28 ng/ml



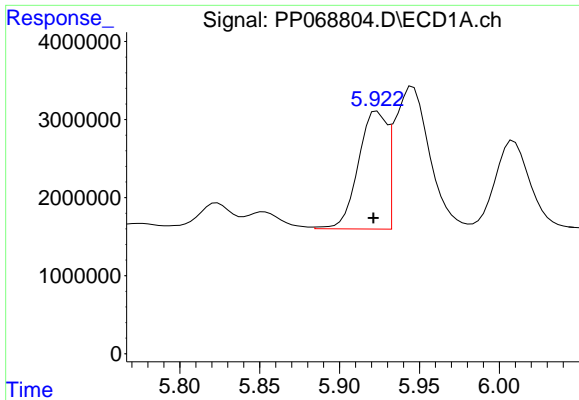
#2 Decachlorobiphenyl

R.T.: 10.678 min
Delta R.T.: 0.006 min
Response: 62020100
Conc: 49.56 ng/ml



#2 Decachlorobiphenyl

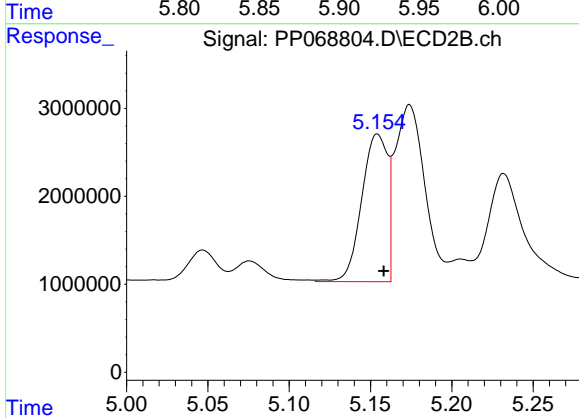
R.T.: 9.205 min
Delta R.T.: -0.005 min
Response: 55747169
Conc: 49.28 ng/ml



#3 AR-1016-1

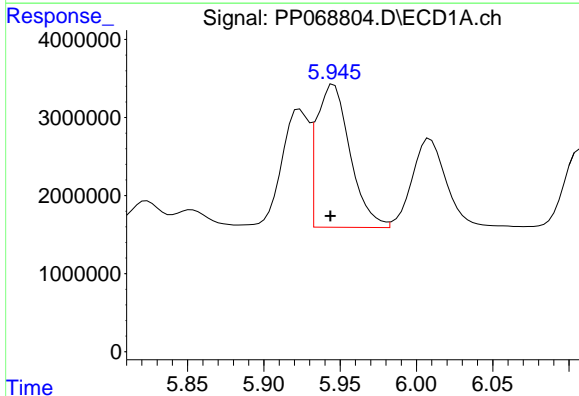
R.T.: 5.924 min
 Delta R.T.: 0.002 min
 Response: 18759778
 Conc: 522.03 ng/ml

Instrument :
 ECD_P
 ClientSampleId :
 AR1660CCC500



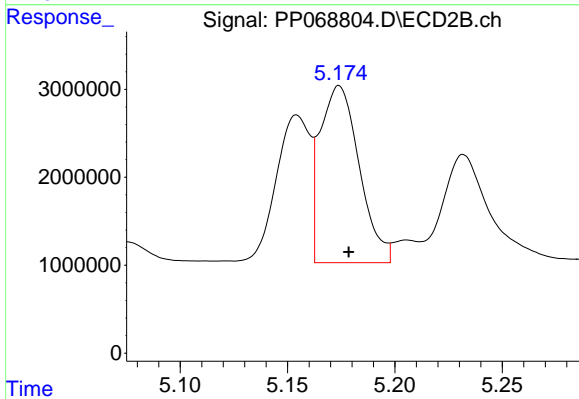
#3 AR-1016-1

R.T.: 5.154 min
 Delta R.T.: -0.004 min
 Response: 18579624
 Conc: 562.22 ng/ml



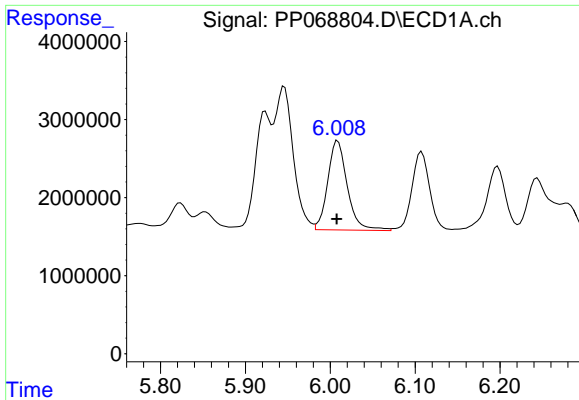
#4 AR-1016-2

R.T.: 5.946 min
 Delta R.T.: 0.002 min
 Response: 27973883
 Conc: 528.30 ng/ml



#4 AR-1016-2

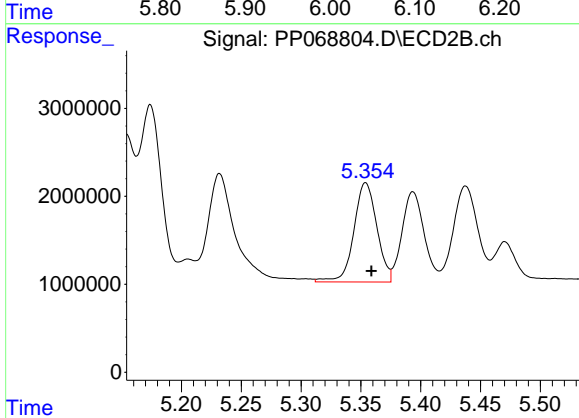
R.T.: 5.174 min
 Delta R.T.: -0.005 min
 Response: 25588865
 Conc: 547.44 ng/ml



#5 AR-1016-3

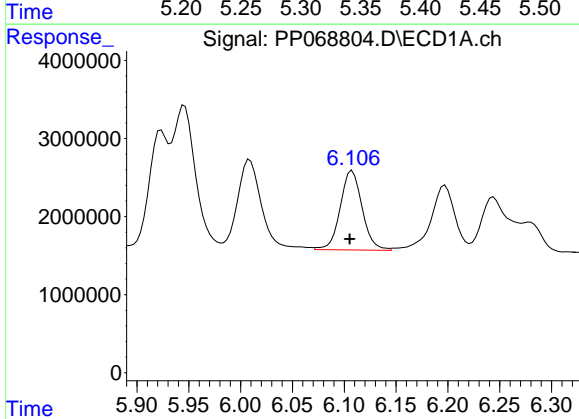
R.T.: 6.009 min
 Delta R.T.: 0.001 min
 Response: 18377395
 Conc: 555.07 ng/ml

Instrument :
 ECD_P
 ClientSampleId :
 AR1660CCC500



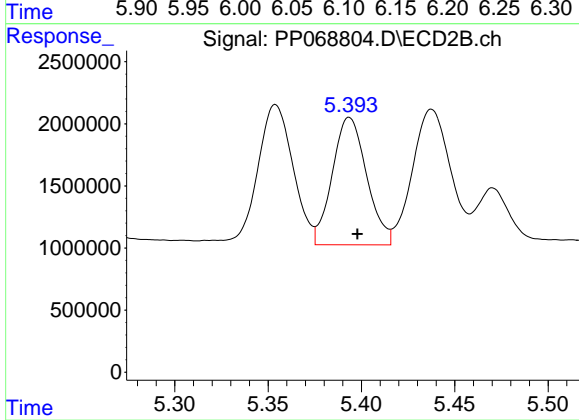
#5 AR-1016-3

R.T.: 5.354 min
 Delta R.T.: -0.005 min
 Response: 15117776
 Conc: 559.08 ng/ml



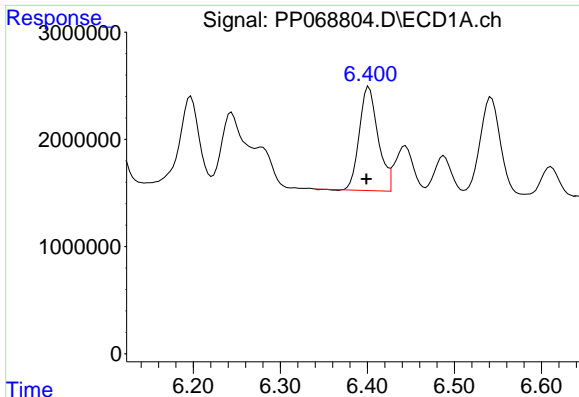
#6 AR-1016-4

R.T.: 6.108 min
 Delta R.T.: 0.002 min
 Response: 14964912
 Conc: 569.40 ng/ml



#6 AR-1016-4

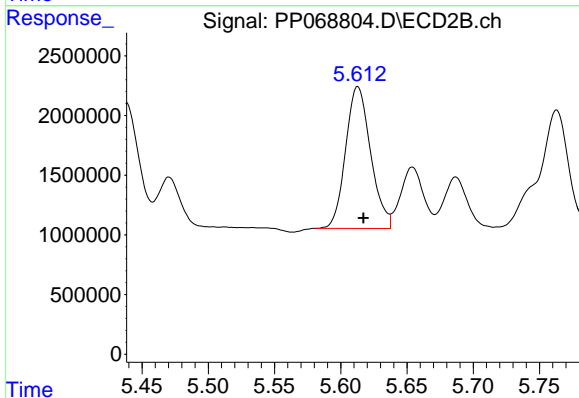
R.T.: 5.394 min
 Delta R.T.: -0.004 min
 Response: 13183925
 Conc: 558.76 ng/ml



#7 AR-1016-5

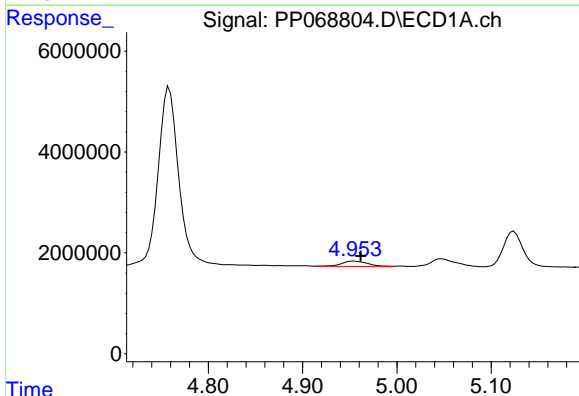
R.T.: 6.402 min
 Delta R.T.: 0.003 min
 Response: 14496323
 Conc: 513.91 ng/ml

Instrument :
 ECD_P
 ClientSampleId :
 AR1660CCC500



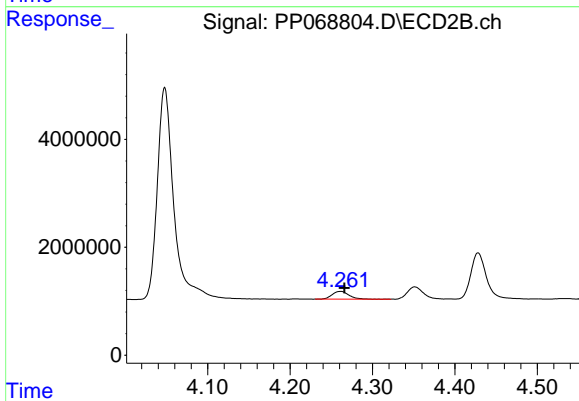
#7 AR-1016-5

R.T.: 5.613 min
 Delta R.T.: -0.004 min
 Response: 15610576
 Conc: 526.63 ng/ml



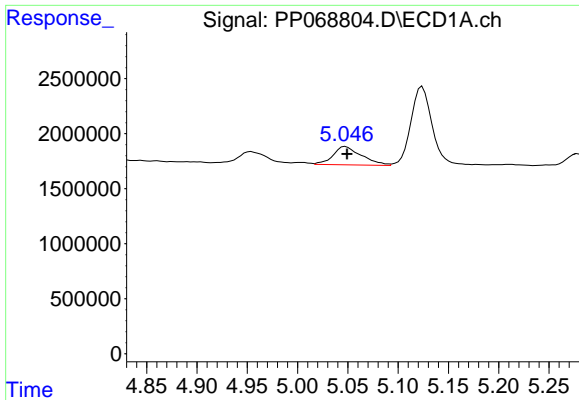
#8 AR-1221-1

R.T.: 4.954 min
 Delta R.T.: -0.008 min
 Response: 2075942
 Conc: 153.07 ng/ml



#8 AR-1221-1

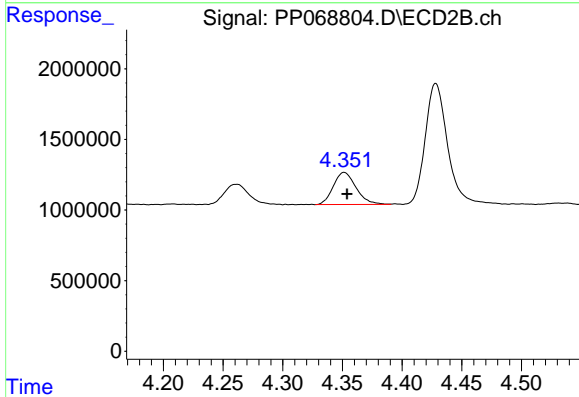
R.T.: 4.261 min
 Delta R.T.: -0.005 min
 Response: 2026343
 Conc: 160.69 ng/ml



#9 AR-1221-2

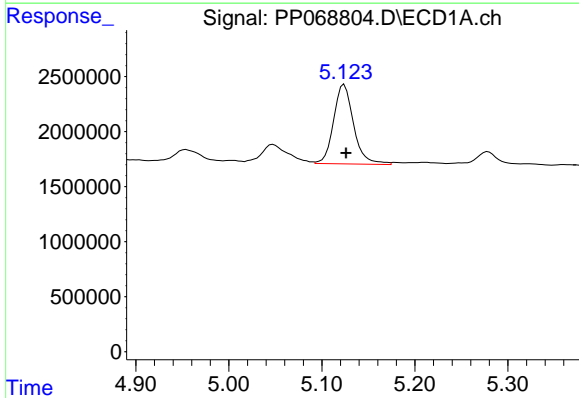
R.T.: 5.048 min
 Delta R.T.: -0.002 min
 Response: 3256002
 Conc: 322.84 ng/ml

Instrument :
 ECD_P
 ClientSampleId :
 AR1660CCC500



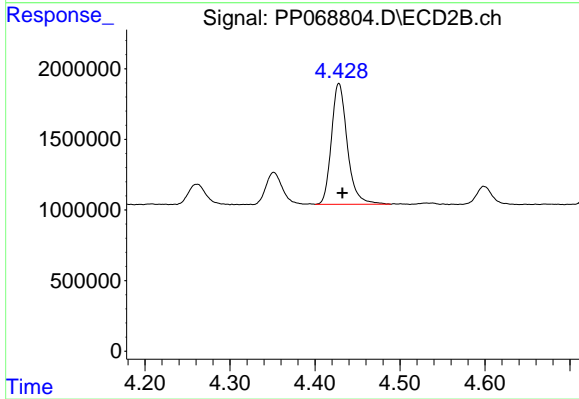
#9 AR-1221-2

R.T.: 4.352 min
 Delta R.T.: -0.002 min
 Response: 3035453
 Conc: 310.60 ng/ml



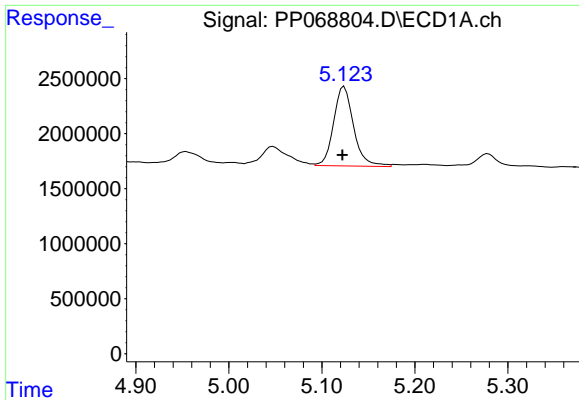
#10 AR-1221-3

R.T.: 5.124 min
 Delta R.T.: -0.002 min
 Response: 10794310
 Conc: 356.72 ng/ml



#10 AR-1221-3

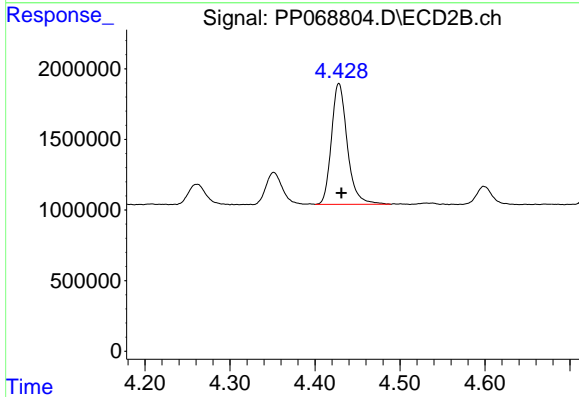
R.T.: 4.428 min
 Delta R.T.: -0.004 min
 Response: 11104665
 Conc: 364.20 ng/ml



#11 AR-1232-1

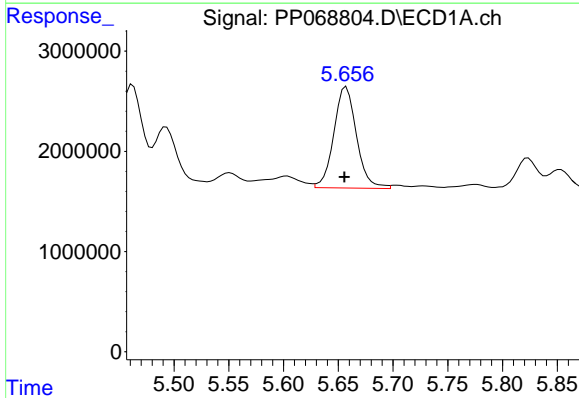
R.T.: 5.124 min
 Delta R.T.: 0.002 min
 Response: 10794310
 Conc: 462.89 ng/ml

Instrument :
 ECD_P
 ClientSampleId :
 AR1660CCC500



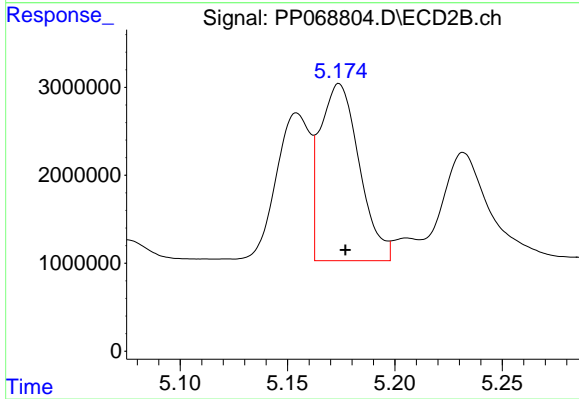
#11 AR-1232-1

R.T.: 4.428 min
 Delta R.T.: -0.003 min
 Response: 11104665
 Conc: 470.50 ng/ml



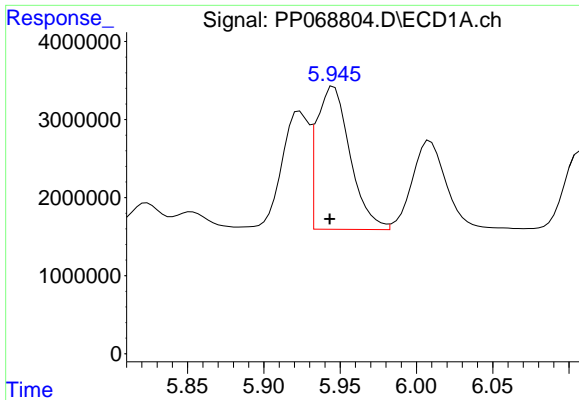
#12 AR-1232-2

R.T.: 5.657 min
 Delta R.T.: 0.002 min
 Response: 14552821
 Conc: 973.13 ng/ml



#12 AR-1232-2

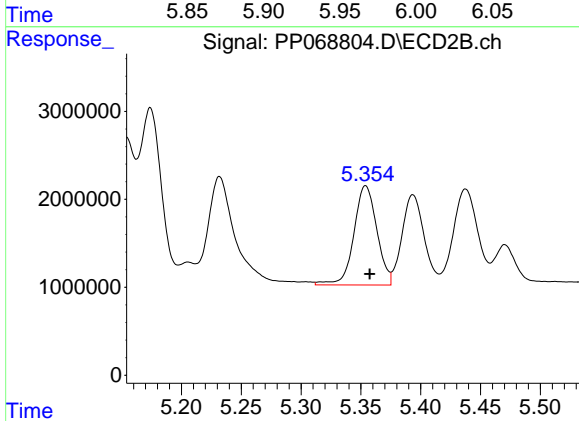
R.T.: 5.174 min
 Delta R.T.: -0.003 min
 Response: 25588865
 Conc: 1174.60 ng/ml



#13 AR-1232-3

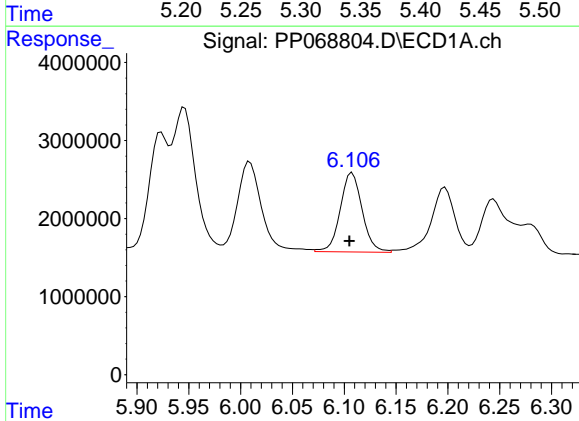
R.T.: 5.946 min
 Delta R.T.: 0.003 min
 Response: 27973883
 Conc: 1116.54 ng/ml

Instrument :
 ECD_P
 ClientSampleId :
 AR1660CCC500



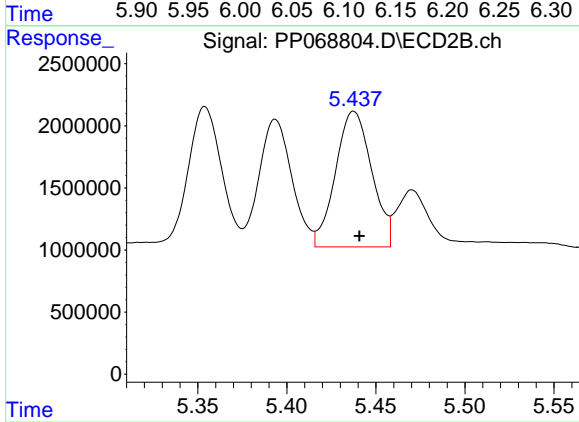
#13 AR-1232-3

R.T.: 5.354 min
 Delta R.T.: -0.003 min
 Response: 15117776
 Conc: 1348.52 ng/ml



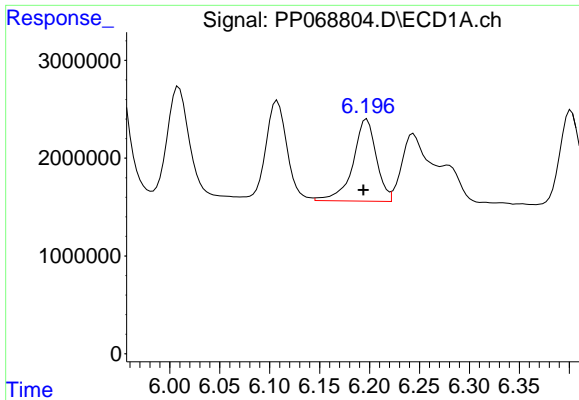
#14 AR-1232-4

R.T.: 6.108 min
 Delta R.T.: 0.003 min
 Response: 14964912
 Conc: 1208.98 ng/ml



#14 AR-1232-4

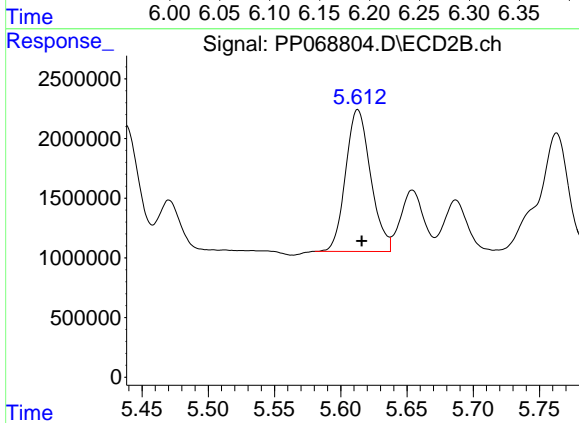
R.T.: 5.438 min
 Delta R.T.: -0.003 min
 Response: 15494799
 Conc: 1414.21 ng/ml



#15 AR-1232-5

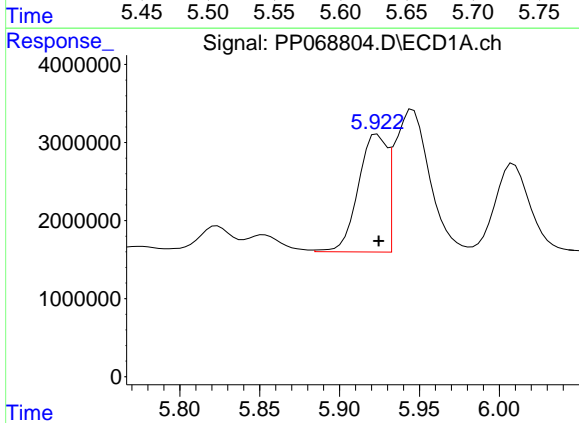
R.T.: 6.197 min
 Delta R.T.: 0.004 min
 Response: 13657341
 Conc: 1373.31 ng/ml

Instrument :
 ECD_P
 ClientSampleId :
 AR1660CCC500



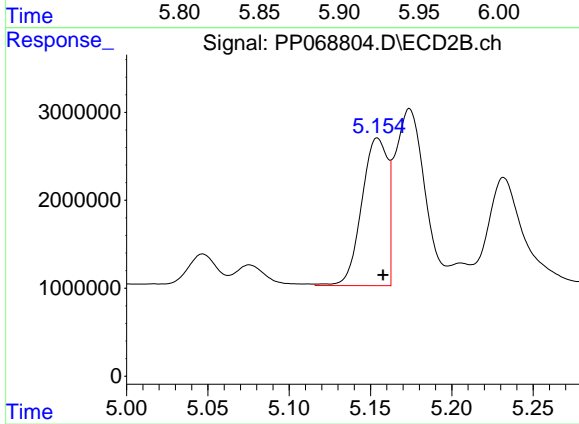
#15 AR-1232-5

R.T.: 5.613 min
 Delta R.T.: -0.003 min
 Response: 15610576
 Conc: 1267.09 ng/ml



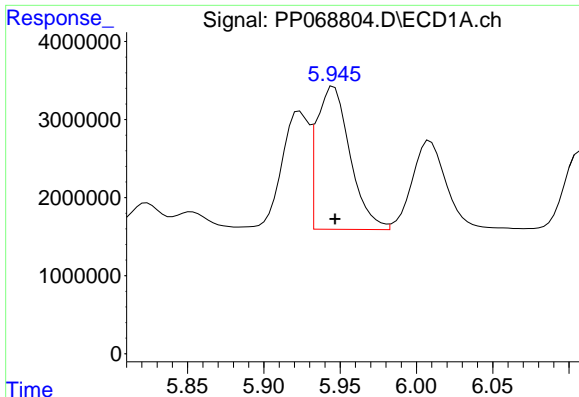
#16 AR-1242-1

R.T.: 5.924 min
 Delta R.T.: 0.000 min
 Response: 18759778
 Conc: 627.97 ng/ml



#16 AR-1242-1

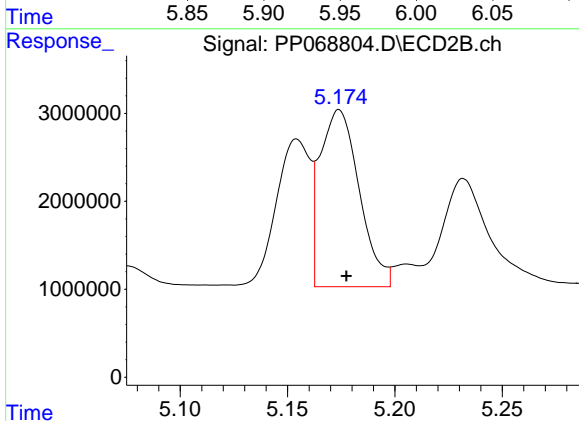
R.T.: 5.154 min
 Delta R.T.: -0.003 min
 Response: 18579624
 Conc: 668.58 ng/ml



#17 AR-1242-2

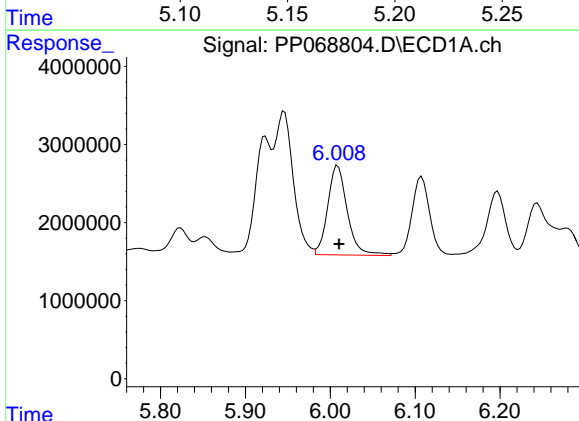
R.T.: 5.946 min
 Delta R.T.: 0.000 min
 Response: 27973883
 Conc: 634.30 ng/ml

Instrument :
 ECD_P
 ClientSampleId :
 AR1660CCC500



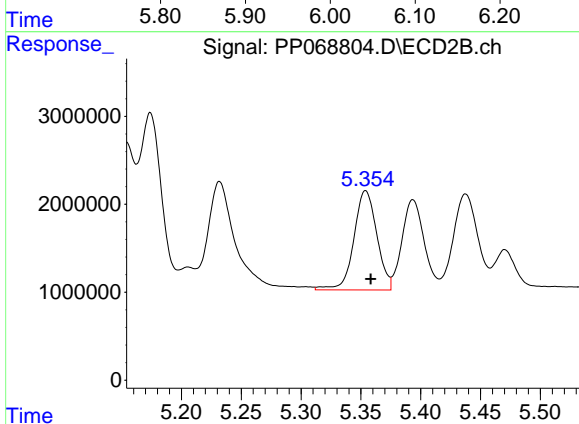
#17 AR-1242-2

R.T.: 5.174 min
 Delta R.T.: -0.003 min
 Response: 25588865
 Conc: 662.49 ng/ml



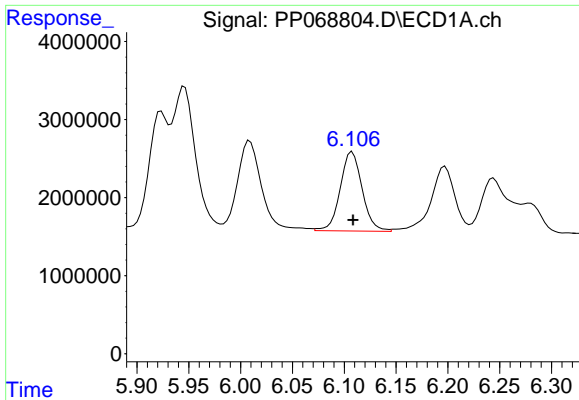
#18 AR-1242-3

R.T.: 6.009 min
 Delta R.T.: -0.001 min
 Response: 18377395
 Conc: 659.67 ng/ml



#18 AR-1242-3

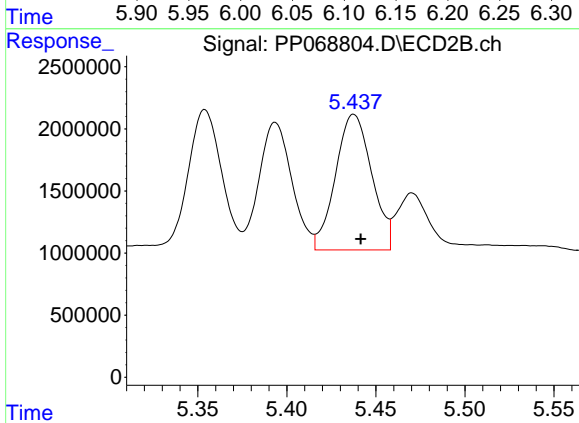
R.T.: 5.354 min
 Delta R.T.: -0.004 min
 Response: 15117776
 Conc: 710.42 ng/ml



#19 AR-1242-4

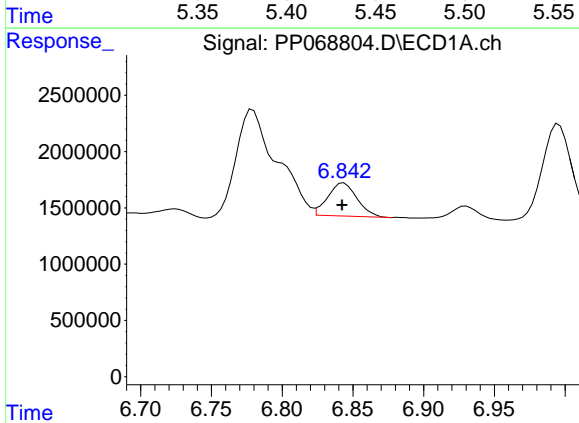
R.T.: 6.108 min
 Delta R.T.: 0.000 min
 Response: 14964912
 Conc: 683.95 ng/ml

Instrument :
 ECD_P
 ClientSampleId :
 AR1660CCC500



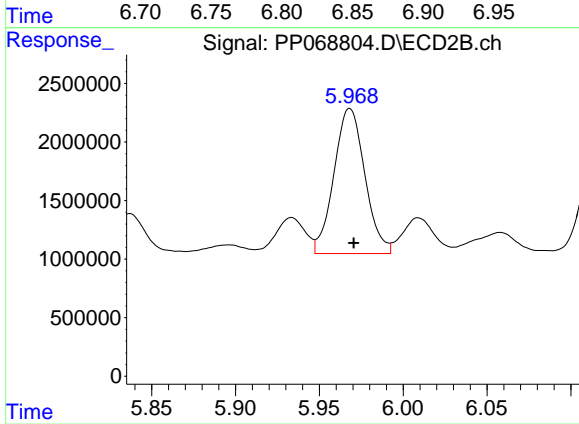
#19 AR-1242-4

R.T.: 5.438 min
 Delta R.T.: -0.004 min
 Response: 15494799
 Conc: 679.78 ng/ml



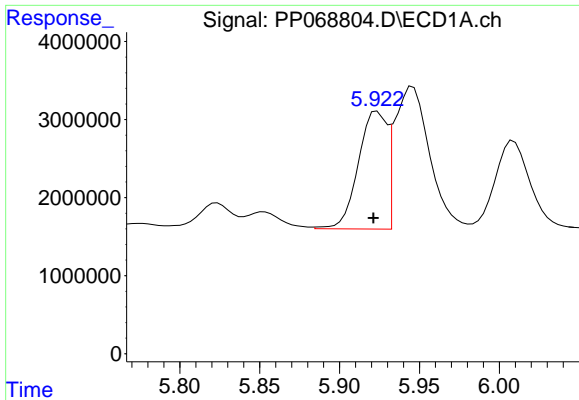
#20 AR-1242-5

R.T.: 6.844 min
 Delta R.T.: 0.001 min
 Response: 4228819
 Conc: 174.17 ng/ml



#20 AR-1242-5

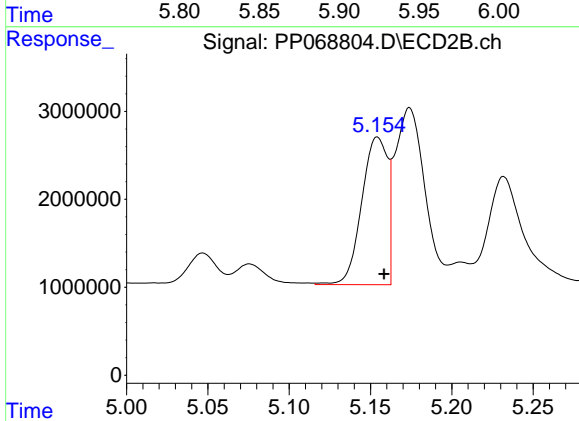
R.T.: 5.968 min
 Delta R.T.: -0.002 min
 Response: 15920208
 Conc: 579.94 ng/ml



#21 AR-1248-1

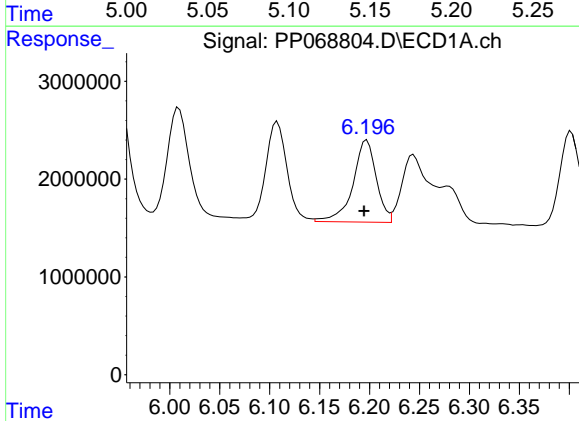
R.T.: 5.924 min
 Delta R.T.: 0.002 min
 Response: 18759778
 Conc: 831.39 ng/ml

Instrument :
 ECD_P
 ClientSampleId :
 AR1660CCC500



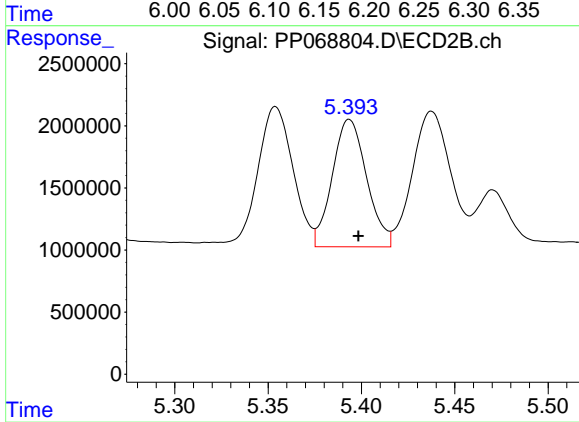
#21 AR-1248-1

R.T.: 5.154 min
 Delta R.T.: -0.004 min
 Response: 18579624
 Conc: 850.43 ng/ml



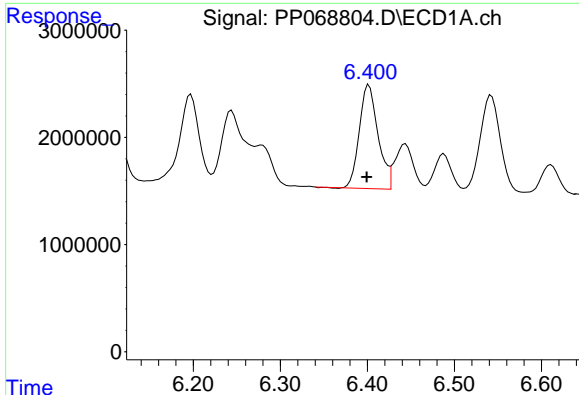
#22 AR-1248-2

R.T.: 6.197 min
 Delta R.T.: 0.003 min
 Response: 13657341
 Conc: 406.34 ng/ml



#22 AR-1248-2

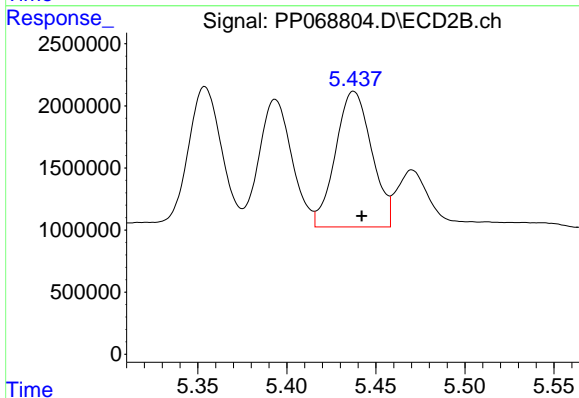
R.T.: 5.394 min
 Delta R.T.: -0.005 min
 Response: 13183925
 Conc: 412.40 ng/ml



#23 AR-1248-3

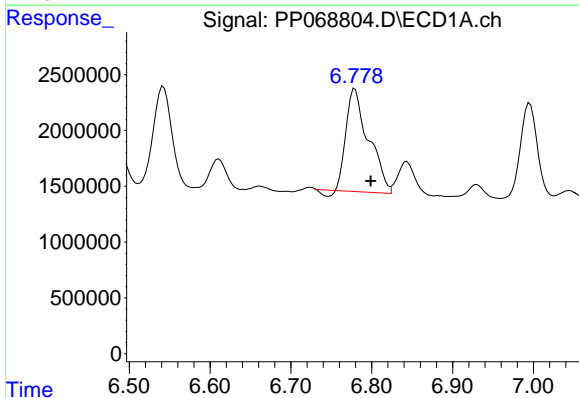
R.T.: 6.402 min
 Delta R.T.: 0.003 min
 Response: 14496323
 Conc: 396.99 ng/ml

Instrument :
 ECD_P
 ClientSampleId :
 AR1660CCC500



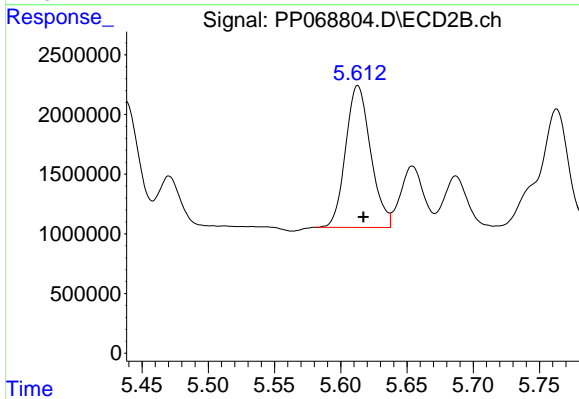
#23 AR-1248-3

R.T.: 5.438 min
 Delta R.T.: -0.004 min
 Response: 15494799
 Conc: 462.42 ng/ml



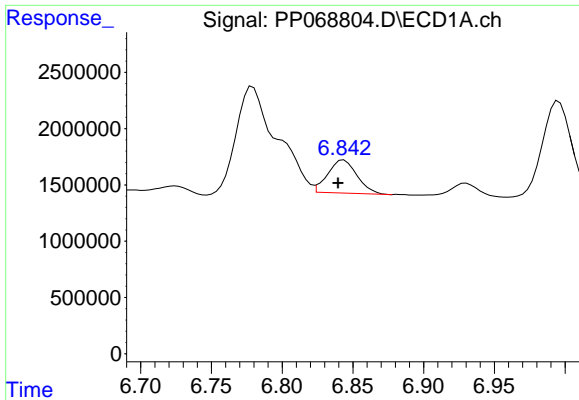
#24 AR-1248-4

R.T.: 6.779 min
 Delta R.T.: -0.020 min
 Response: 17641095
 Conc: 412.31 ng/ml



#24 AR-1248-4

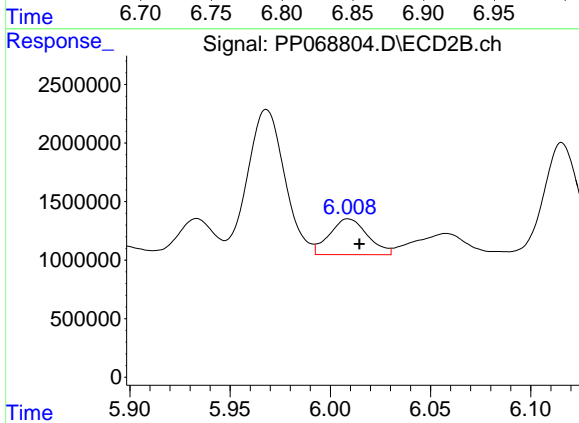
R.T.: 5.613 min
 Delta R.T.: -0.004 min
 Response: 15610576
 Conc: 402.04 ng/ml



#25 AR-1248-5

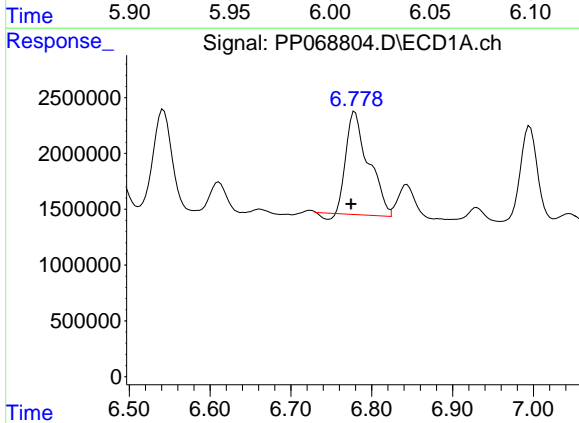
R.T.: 6.844 min
 Delta R.T.: 0.004 min
 Response: 4228819
 Conc: 101.80 ng/ml

Instrument :
 ECD_P
 ClientSampleId :
 AR1660CCC500



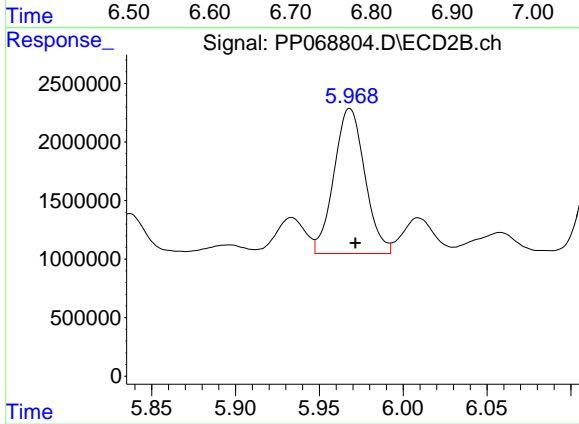
#25 AR-1248-5

R.T.: 6.009 min
 Delta R.T.: -0.006 min
 Response: 4047876
 Conc: 109.20 ng/ml



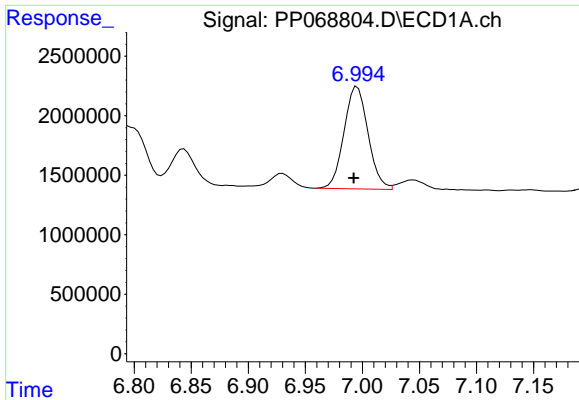
#26 AR-1254-1

R.T.: 6.779 min
 Delta R.T.: 0.005 min
 Response: 17641095
 Conc: 339.99 ng/ml



#26 AR-1254-1

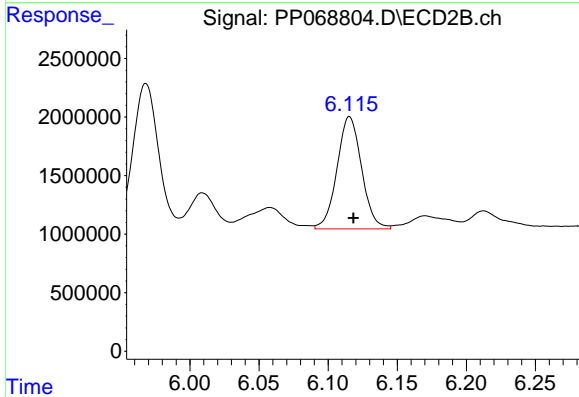
R.T.: 5.968 min
 Delta R.T.: -0.003 min
 Response: 15920208
 Conc: 262.53 ng/ml



#27 AR-1254-2

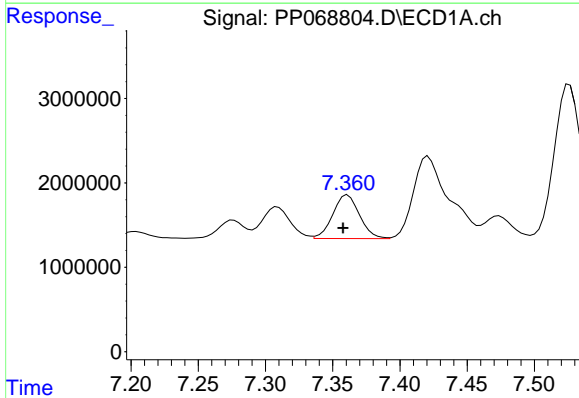
R.T.: 6.996 min
 Delta R.T.: 0.003 min
 Response: 12594594
 Conc: 184.57 ng/ml

Instrument :
 ECD_P
 ClientSampleId :
 AR1660CCC500



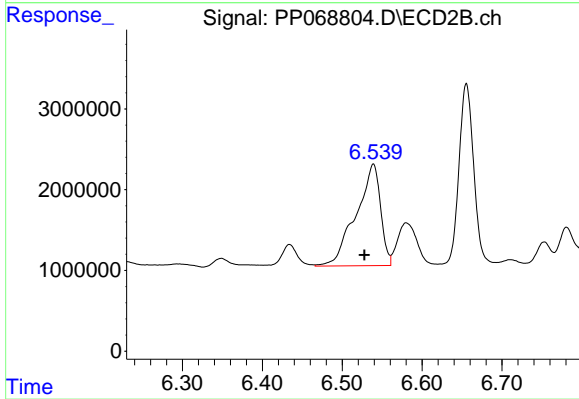
#27 AR-1254-2

R.T.: 6.115 min
 Delta R.T.: -0.003 min
 Response: 11867786
 Conc: 225.04 ng/ml



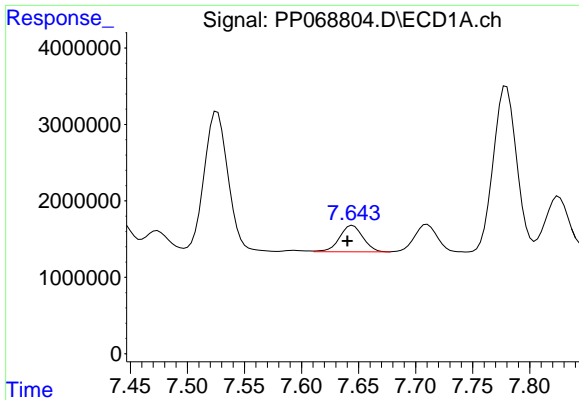
#28 AR-1254-3

R.T.: 7.361 min
 Delta R.T.: 0.003 min
 Response: 7109251
 Conc: 99.49 ng/ml



#28 AR-1254-3

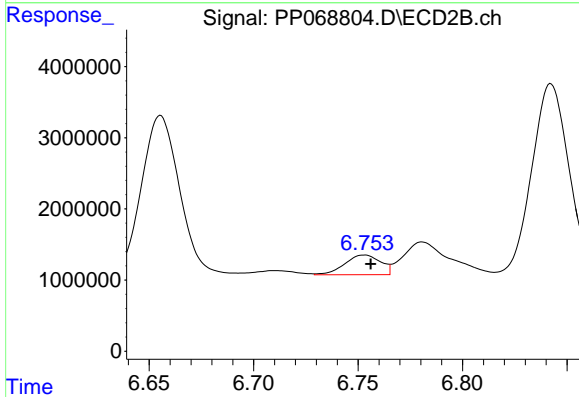
R.T.: 6.539 min
 Delta R.T.: 0.011 min
 Response: 26865513
 Conc: 322.67 ng/ml



#29 AR-1254-4

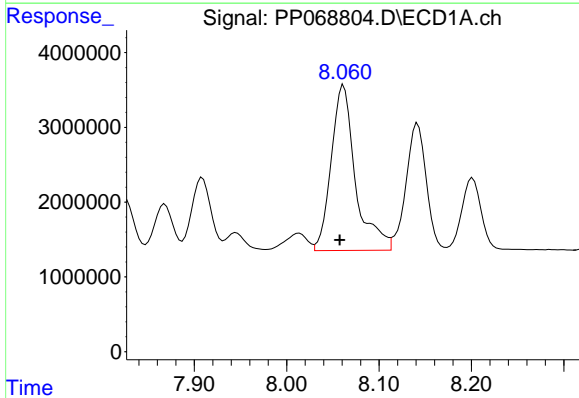
R.T.: 7.645 min
 Delta R.T.: 0.005 min
 Response: 4903299
 Conc: 91.12 ng/ml

Instrument :
 ECD_P
 ClientSampleId :
 AR1660CCC500



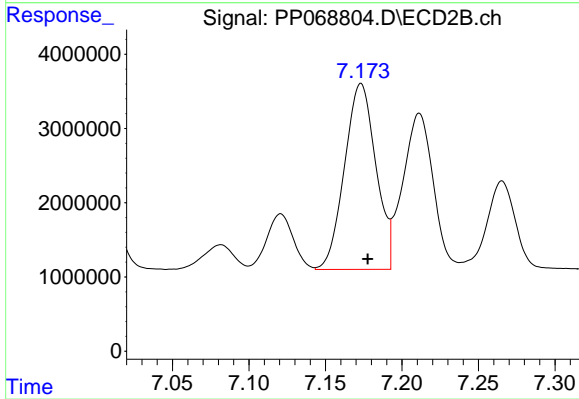
#29 AR-1254-4

R.T.: 6.753 min
 Delta R.T.: -0.003 min
 Response: 3301418
 Conc: 67.89 ng/ml



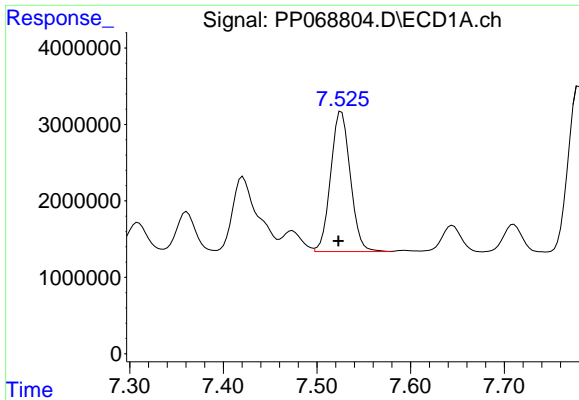
#30 AR-1254-5

R.T.: 8.062 min
 Delta R.T.: 0.004 min
 Response: 40385588
 Conc: 644.45 ng/ml



#30 AR-1254-5

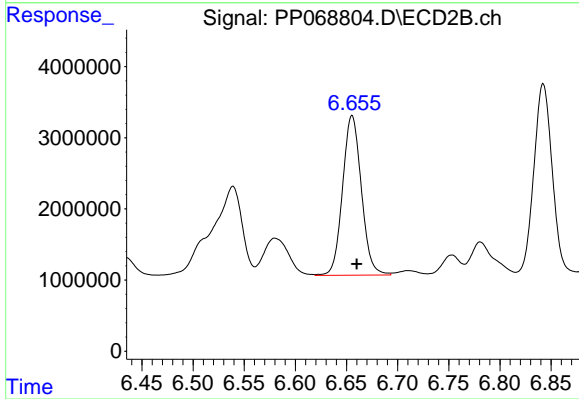
R.T.: 7.173 min
 Delta R.T.: -0.004 min
 Response: 35719341
 Conc: 478.60 ng/ml



#31 AR-1260-1

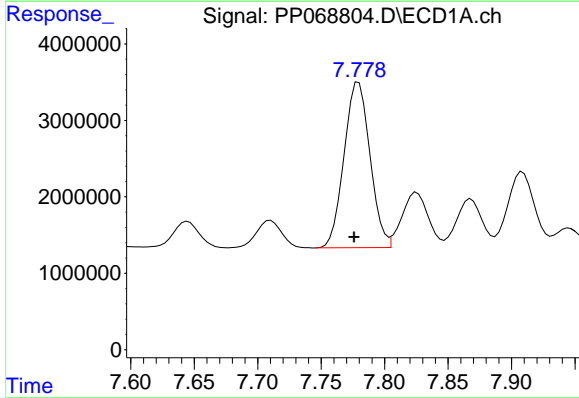
R.T.: 7.526 min
Delta R.T.: 0.003 min
Response: 26715364
Conc: 493.78 ng/ml

Instrument :
ECD_P
ClientSampleId :
AR1660CCC500



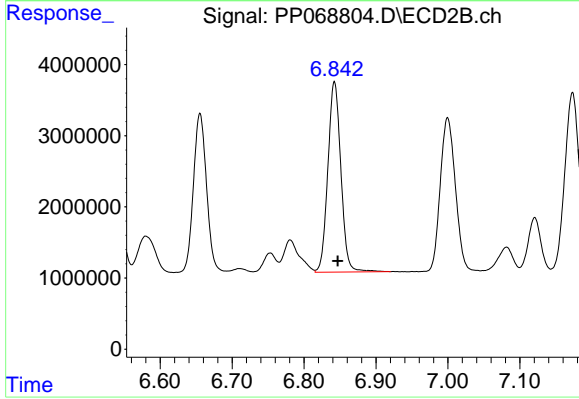
#31 AR-1260-1

R.T.: 6.655 min
Delta R.T.: -0.005 min
Response: 28764811
Conc: 516.90 ng/ml



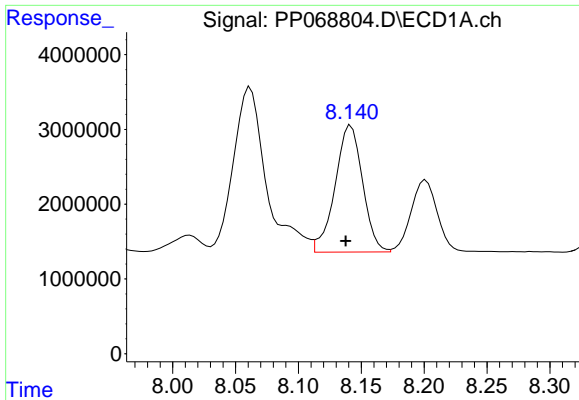
#32 AR-1260-2

R.T.: 7.780 min
Delta R.T.: 0.004 min
Response: 30769385
Conc: 483.71 ng/ml



#32 AR-1260-2

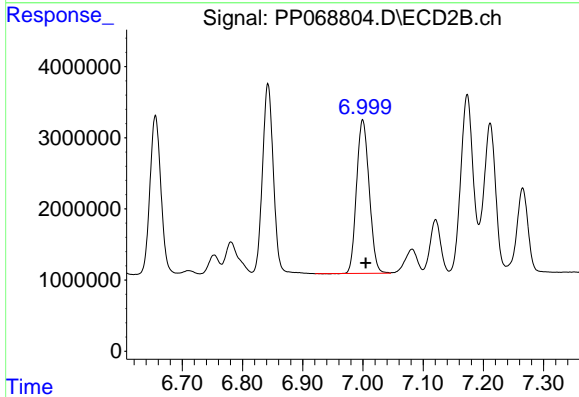
R.T.: 6.842 min
Delta R.T.: -0.005 min
Response: 33780523
Conc: 510.00 ng/ml



#33 AR-1260-3

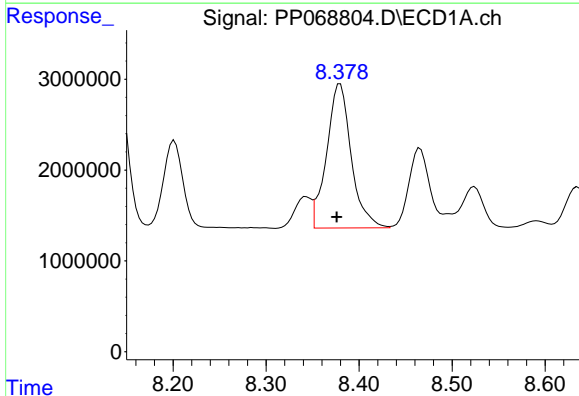
R.T.: 8.142 min
Delta R.T.: 0.004 min
Response: 25819545
Conc: 479.99 ng/ml

Instrument :
ECD_P
ClientSampleId :
AR1660CCC500



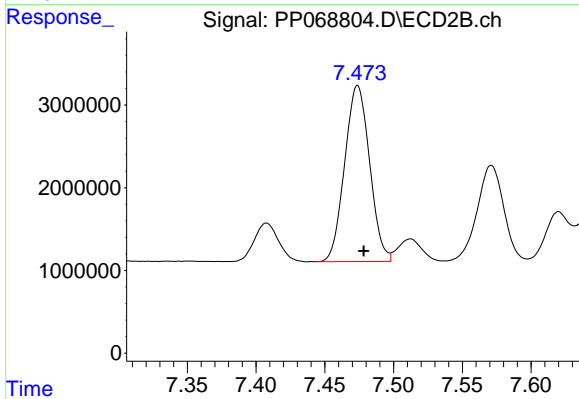
#33 AR-1260-3

R.T.: 7.000 min
Delta R.T.: -0.005 min
Response: 31430451
Conc: 507.83 ng/ml



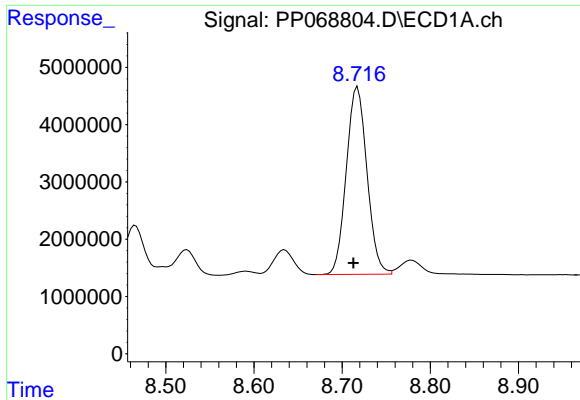
#34 AR-1260-4

R.T.: 8.380 min
Delta R.T.: 0.003 min
Response: 29215497
Conc: 469.49 ng/ml



#34 AR-1260-4

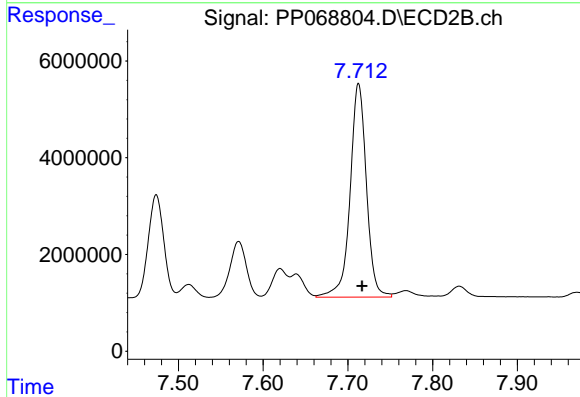
R.T.: 7.474 min
Delta R.T.: -0.004 min
Response: 26885763
Conc: 509.81 ng/ml



#35 AR-1260-5

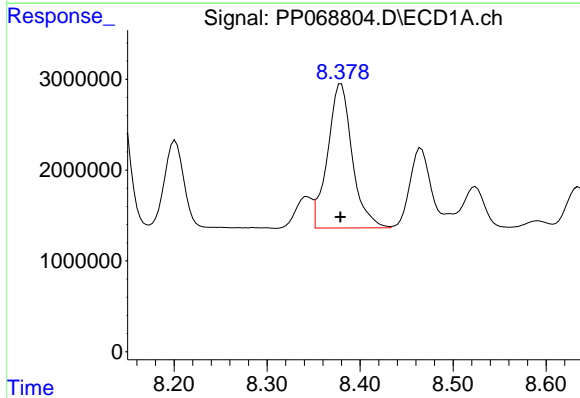
R.T.: 8.717 min
 Delta R.T.: 0.004 min
 Response: 53410075
 Conc: 471.89 ng/ml

Instrument :
 ECD_P
 ClientSampleId :
 AR1660CCC500



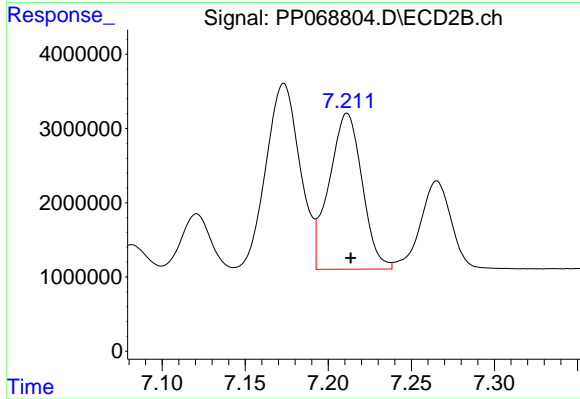
#35 AR-1260-5

R.T.: 7.713 min
 Delta R.T.: -0.004 min
 Response: 59133920
 Conc: 496.61 ng/ml



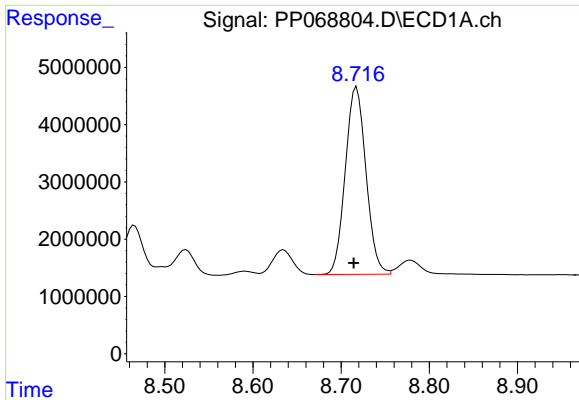
#36 AR-1262-1

R.T.: 8.380 min
 Delta R.T.: 0.000 min
 Response: 29215497
 Conc: 394.10 ng/ml



#36 AR-1262-1

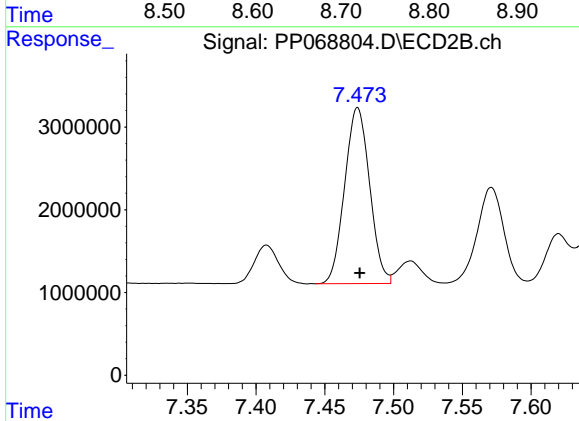
R.T.: 7.211 min
 Delta R.T.: -0.002 min
 Response: 29003210
 Conc: 373.77 ng/ml



#37 AR-1262-2

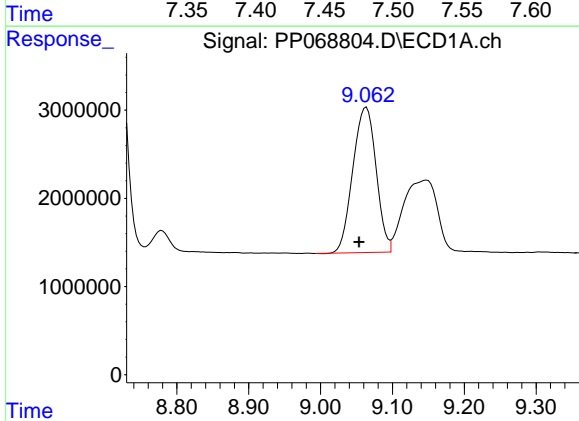
R.T.: 8.717 min
 Delta R.T.: 0.003 min
 Response: 53410075
 Conc: 414.04 ng/ml

Instrument :
 ECD_P
 ClientSampleId :
 AR1660CCC500



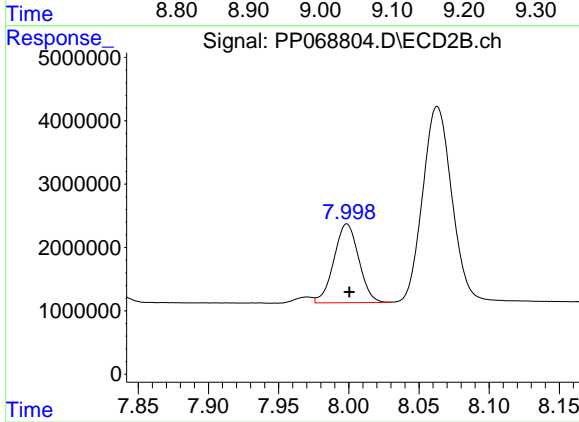
#37 AR-1262-2

R.T.: 7.474 min
 Delta R.T.: -0.001 min
 Response: 26885763
 Conc: 380.31 ng/ml



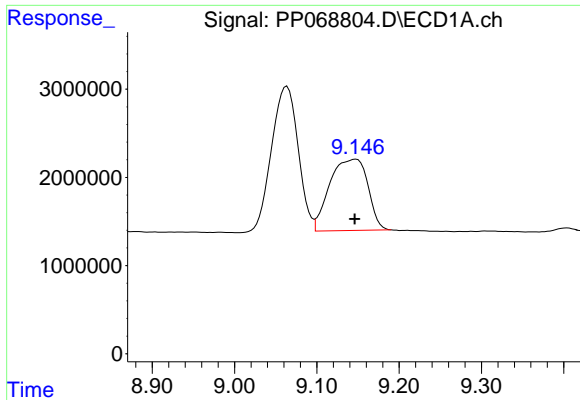
#38 AR-1262-3

R.T.: 9.064 min
 Delta R.T.: 0.010 min
 Response: 37011673
 Conc: 386.82 ng/ml



#38 AR-1262-3

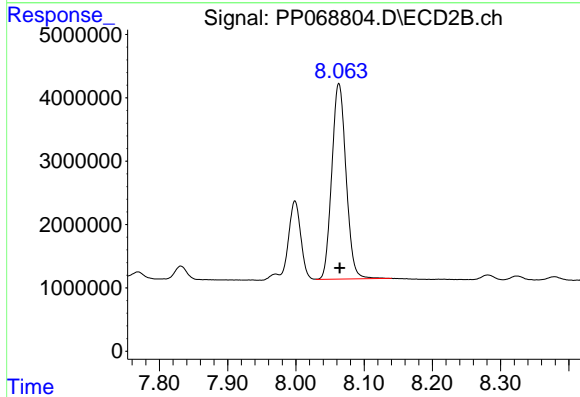
R.T.: 7.999 min
 Delta R.T.: -0.002 min
 Response: 15306447
 Conc: 260.10 ng/ml



#39 AR-1262-4

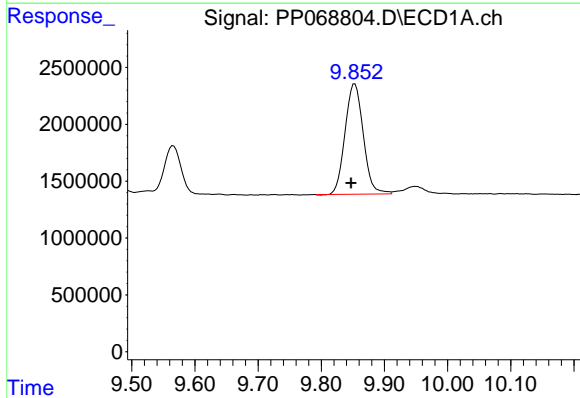
R.T.: 9.148 min
 Delta R.T.: 0.002 min
 Response: 26030460
 Conc: 340.77 ng/ml

Instrument :
 ECD_P
 ClientSampleId :
 AR1660CCC500



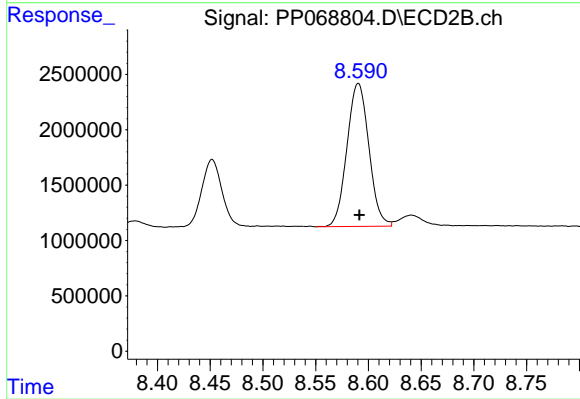
#39 AR-1262-4

R.T.: 8.063 min
 Delta R.T.: -0.001 min
 Response: 44784890
 Conc: 432.28 ng/ml



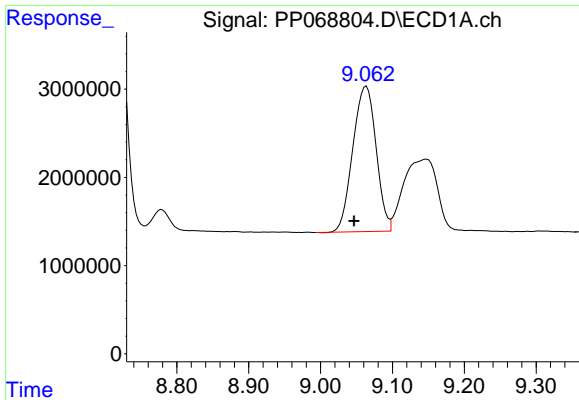
#40 AR-1262-5

R.T.: 9.853 min
 Delta R.T.: 0.006 min
 Response: 19417086
 Conc: 363.05 ng/ml



#40 AR-1262-5

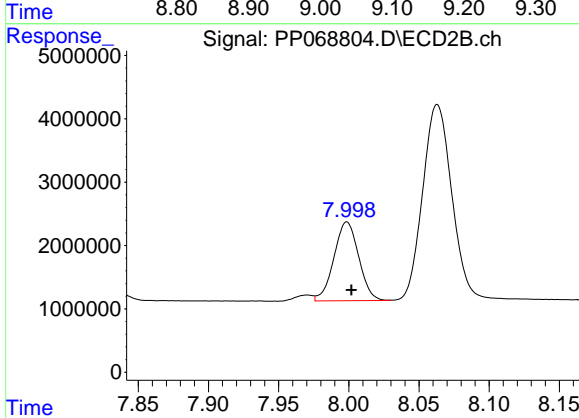
R.T.: 8.590 min
 Delta R.T.: 0.000 min
 Response: 18677872
 Conc: 368.46 ng/ml



#41 AR-1268-1

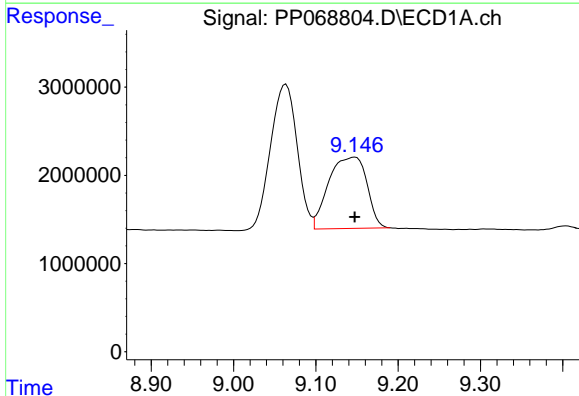
R.T.: 9.064 min
 Delta R.T.: 0.017 min
 Response: 37011673
 Conc: 239.88 ng/ml

Instrument :
 ECD_P
 ClientSampleId :
 AR1660CCC500



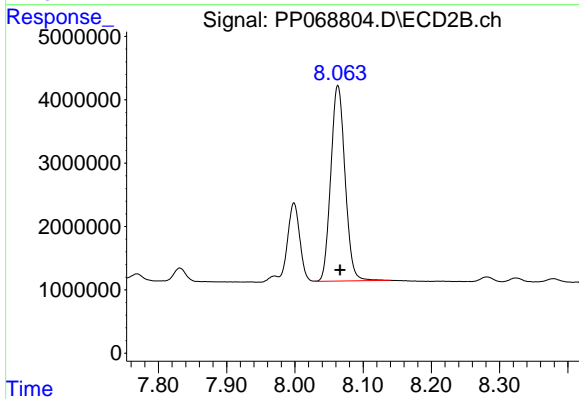
#41 AR-1268-1

R.T.: 7.999 min
 Delta R.T.: -0.003 min
 Response: 15306447
 Conc: 98.29 ng/ml



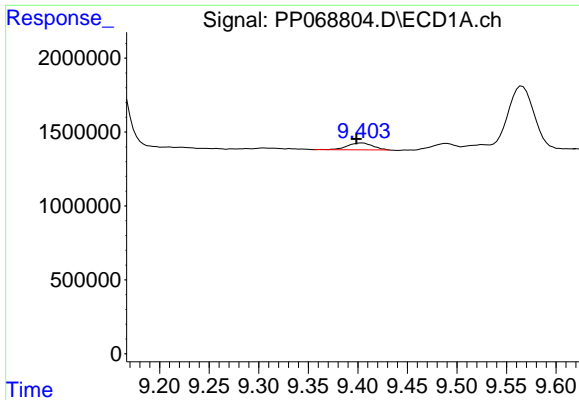
#42 AR-1268-2

R.T.: 9.148 min
 Delta R.T.: 0.000 min
 Response: 26030460
 Conc: 185.95 ng/ml



#42 AR-1268-2

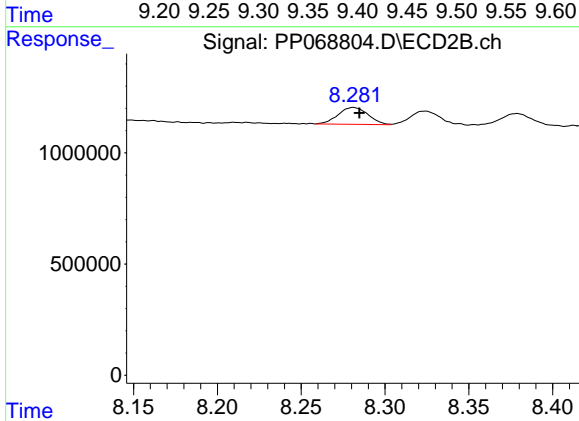
R.T.: 8.063 min
 Delta R.T.: -0.003 min
 Response: 44784890
 Conc: 316.37 ng/ml



#43 AR-1268-3

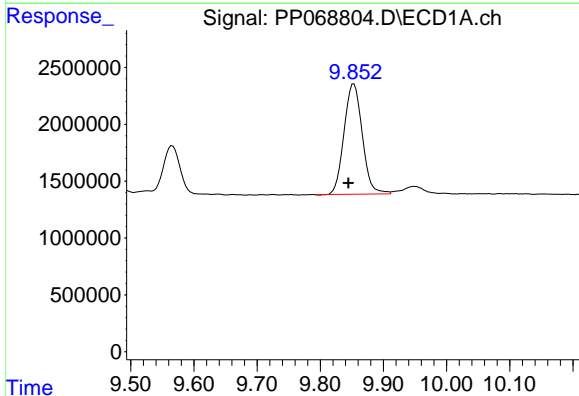
R.T.: 9.405 min
 Delta R.T.: 0.006 min
 Response: 799312
 Conc: 6.36 ng/ml

Instrument :
 ECD_P
 ClientSampleId :
 AR1660CCC500



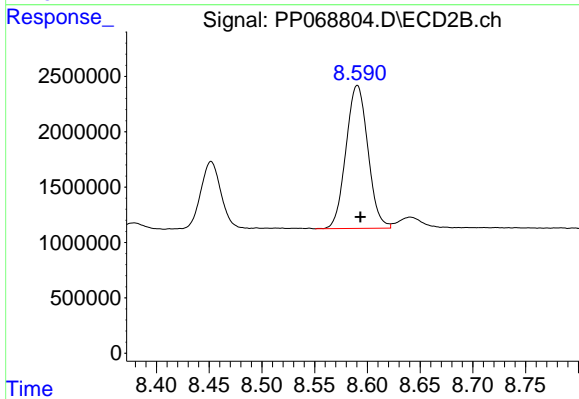
#43 AR-1268-3

R.T.: 8.281 min
 Delta R.T.: -0.004 min
 Response: 936588
 Conc: 7.52 ng/ml



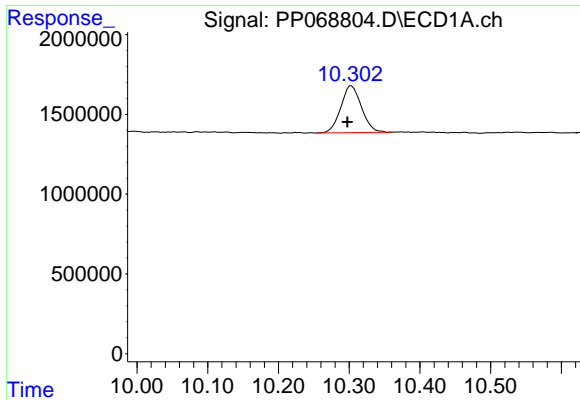
#44 AR-1268-4

R.T.: 9.853 min
 Delta R.T.: 0.009 min
 Response: 19417086
 Conc: 363.37 ng/ml



#44 AR-1268-4

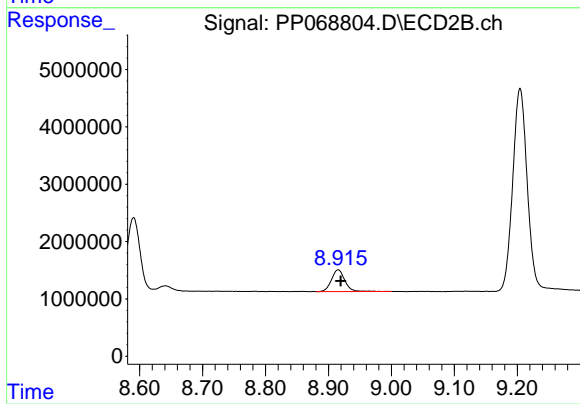
R.T.: 8.590 min
 Delta R.T.: -0.003 min
 Response: 18677872
 Conc: 342.06 ng/ml



#45 AR-1268-5

R.T.: 10.303 min
Delta R.T.: 0.006 min
Response: 5947134
Conc: 14.98 ng/ml

Instrument :
ECD_P
ClientSampleId :
AR1660CCC500



#45 AR-1268-5

R.T.: 8.915 min
Delta R.T.: -0.004 min
Response: 5631216
Conc: 14.95 ng/ml