

Data Path : Z:\pestpcbsrv\HPCHEM1\ECD_P\Data\PP120624\
 Data File : PP068842.D
 Signal(s) : Signal #1: ECD1A.ch Signal #2: ECD2B.ch
 Acq On : 06 Dec 2024 13:25
 Operator : YP\AJ
 Sample : PB165421BS
 Misc :
 ALS Vial : 8 Sample Multiplier: 1

Instrument :
 ECD_P
 ClientSampleId :

Integration File signal 1: autoint1.e
 Integration File signal 2: autoint2.e
 Quant Time: Dec 06 22:55:54 2024
 Quant Method : Z:\pestpcbsrv\HPCHEM1\ECD_P\methods\PP110724.M
 Quant Title : GC EXTRACTABLES
 QLast Update : Fri Nov 08 11:04:08 2024
 Response via : Initial Calibration
 Integrator: ChemStation

Volume Inj. : 2 µl
 Signal #1 Phase : ZB-MR2 Signal #2 Phase: ZB-MR2
 Signal #1 Info : 30Mx0.32mmx 0.50µ Signal #2 Info : 30M x 0.32mm x 0.25µm

Compound	RT#1	RT#2	Resp#1	Resp#2	ng/ml	ng/ml

System Monitoring Compounds						
1) SA Tetrachlo...	4.763	4.050	19013643	19688995	19.589	20.334
2) SA Decachlor...	10.686	9.205	19456109	23196546	15.546	20.506 #
Target Compounds						
3) L1 AR-1016-1	5.928	5.156	15831920	14360321	440.558	434.541
4) L1 AR-1016-2	5.951	5.176	23408288	21679772	442.080	463.812
5) L1 AR-1016-3	6.014	5.356	15349317	11158101	463.606	412.648
6) L1 AR-1016-4	6.113	5.395	12896601	9775029	490.700	414.284
7) L1 AR-1016-5	6.407	5.614	11640130	12057499	412.654	406.769
8) L2 AR-1221-1	4.961	4.262	1798457	1500184	132.608	118.964
9) L2 AR-1221-2	5.052	4.353	2242848	2008584	222.382	205.525
10) L2 AR-1221-3	5.129	4.430	8670435	8345414	286.532	273.702
11) L3 AR-1232-1	5.129	4.430	8670435	8345414	371.810	353.595
12) L3 AR-1232-2	5.662	5.176	11312532	21679772	756.452	995.163 #
13) L3 AR-1232-3	5.951	5.356	23408288	11158101	934.310	995.313
14) L3 AR-1232-4	6.113	5.439	12896601	11833954	1041.883	1080.084
15) L3 AR-1232-5	6.202	5.614	10957663	12057499	1101.848	978.690
16) L4 AR-1242-1	5.928	5.156	15831920	14360321	529.965	516.749
17) L4 AR-1242-2	5.951	5.176	23408288	21679772	530.775	561.288
18) L4 AR-1242-3	6.014	5.356	15349317	11158101	550.975	524.346
19) L4 AR-1242-4	6.113	5.439	12896601	11833954	589.425	519.177
20) L4 AR-1242-5	6.847	5.970	1652312	9855927	68.051	359.032 #
21) L5 AR-1248-1	5.928	5.156	15831920	14360321	701.631	657.300
22) L5 AR-1248-2	6.202	5.395	10957663	9775029	326.018	305.765
23) L5 AR-1248-3	6.407	5.439	11640130	11833954	318.771	353.166
24) L5 AR-1248-4	6.784	5.614	10854813	12057499	253.702	310.530
25) L5 AR-1248-5	6.847	6.011	1652312	1430286	39.777	38.585
26) L6 AR-1254-1	6.784	5.970	10854813	9855927	209.203	162.527
27) L6 AR-1254-2	7.000	6.117	10624031	9531596	155.692	180.744
28) L6 AR-1254-3	7.366	6.540	5019906	20616749	70.250	247.615 #
29) L6 AR-1254-4	7.650	6.754	3873598	1663825	71.981	34.216 #
30) L6 AR-1254-5	8.066	7.174	35199247	31351598	561.690	420.073 #
31) L7 AR-1260-1	7.531	6.657	22919322	23590677	423.615	423.919
32) L7 AR-1260-2	7.784	6.843	26108980	27662544	410.448	417.638
33) L7 AR-1260-3	8.146	7.001	18829508	26325195	350.043	425.345
34) L7 AR-1260-4	8.385	7.475	22979713	20138396	369.283	381.865
35) L7 AR-1260-5	8.723	7.713	39315220	44491346	347.355	373.638
36) L8 AR-1262-1	8.385	7.212	22979713	21142170	309.980	272.463
37) L8 AR-1262-2	8.723	7.475	39315220	20138396	304.772	284.865
38) L8 AR-1262-3	9.074	7.999	29568217	10175906	309.029	172.920 #
39) L8 AR-1262-4	9.140	8.063	20433143	32871646	267.496	317.289
40) L8 AR-1262-5	9.859	8.591	12258831	11319141	229.211	223.295
41) L9 AR-1268-1	9.074	7.999	29568217	10175906	191.636	65.343 #

Data Path : Z:\pestpcbsrv\HPCHEM1\ECD_P\Data\PP120624\
 Data File : PP068842.D
 Signal(s) : Signal #1: ECD1A.ch Signal #2: ECD2B.ch
 Acq On : 06 Dec 2024 13:25
 Operator : YP\AJ
 Sample : PB165421BS
 Misc :
 ALS Vial : 8 Sample Multiplier: 1

Instrument :
 ECD_P
 ClientSampleId :

Integration File signal 1: autoint1.e
 Integration File signal 2: autoint2.e
 Quant Time: Dec 06 22:55:54 2024
 Quant Method : Z:\pestpcbsrv\HPCHEM1\ECD_P\methods\PP110724.M
 Quant Title : GC EXTRACTABLES
 QLast Update : Fri Nov 08 11:04:08 2024
 Response via : Initial Calibration
 Integrator: ChemStation

Volume Inj. : 2 µl
 Signal #1 Phase : ZB-MR1 Signal #2 Phase: ZB-MR2
 Signal #1 Info : 30Mx0.32mmx 0.50µ Signal #2 Info : 30M x 0.32mm x 0.25µm

	Compound	RT#1	RT#2	Resp#1	Resp#2	ng/ml	ng/ml
42)	L9 AR-1268-2	9.140	8.063	20433143	32871646	145.965	232.212 #
43)	L9 AR-1268-3	9.411	8.282	526940	785409	4.194	6.308 #
44)	L9 AR-1268-4	9.859	8.591	12258831	11319141	229.409	207.294
45)	L9 AR-1268-5	10.308	8.917	4168492	4045392	10.501	10.743

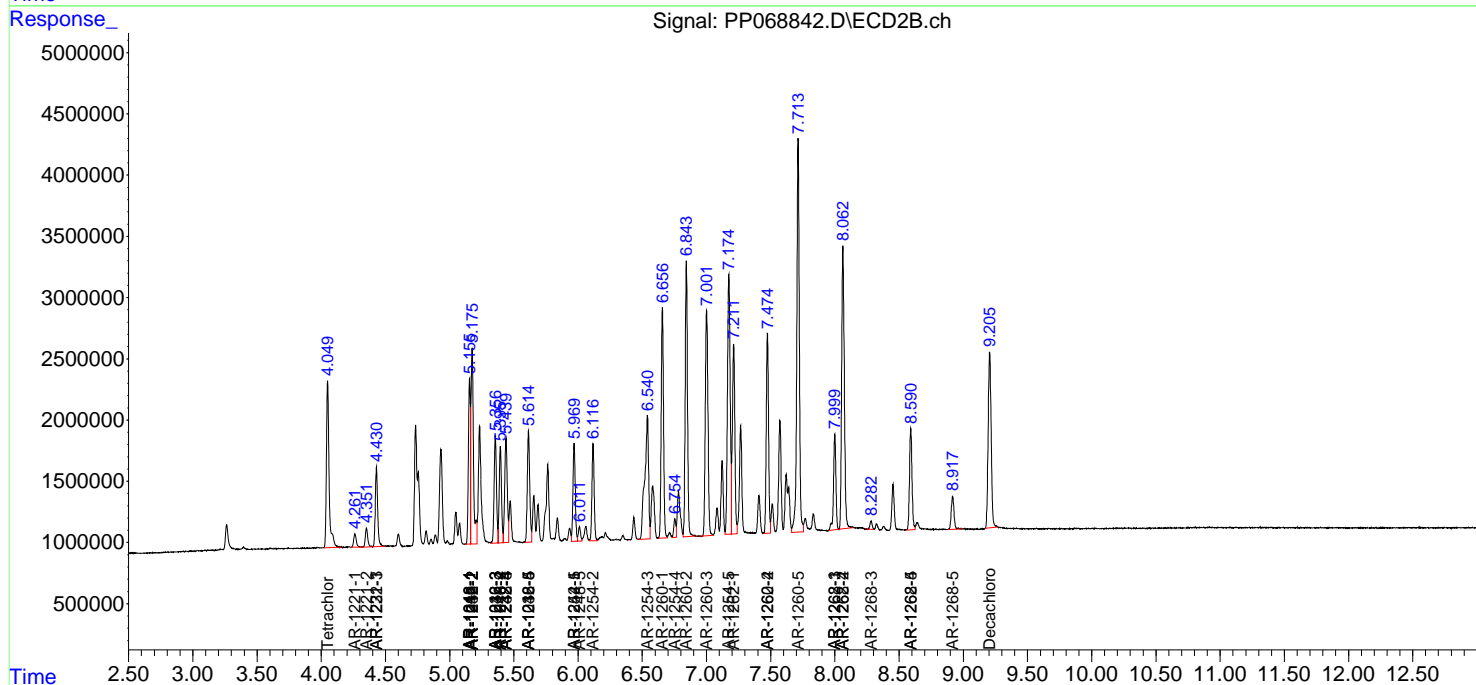
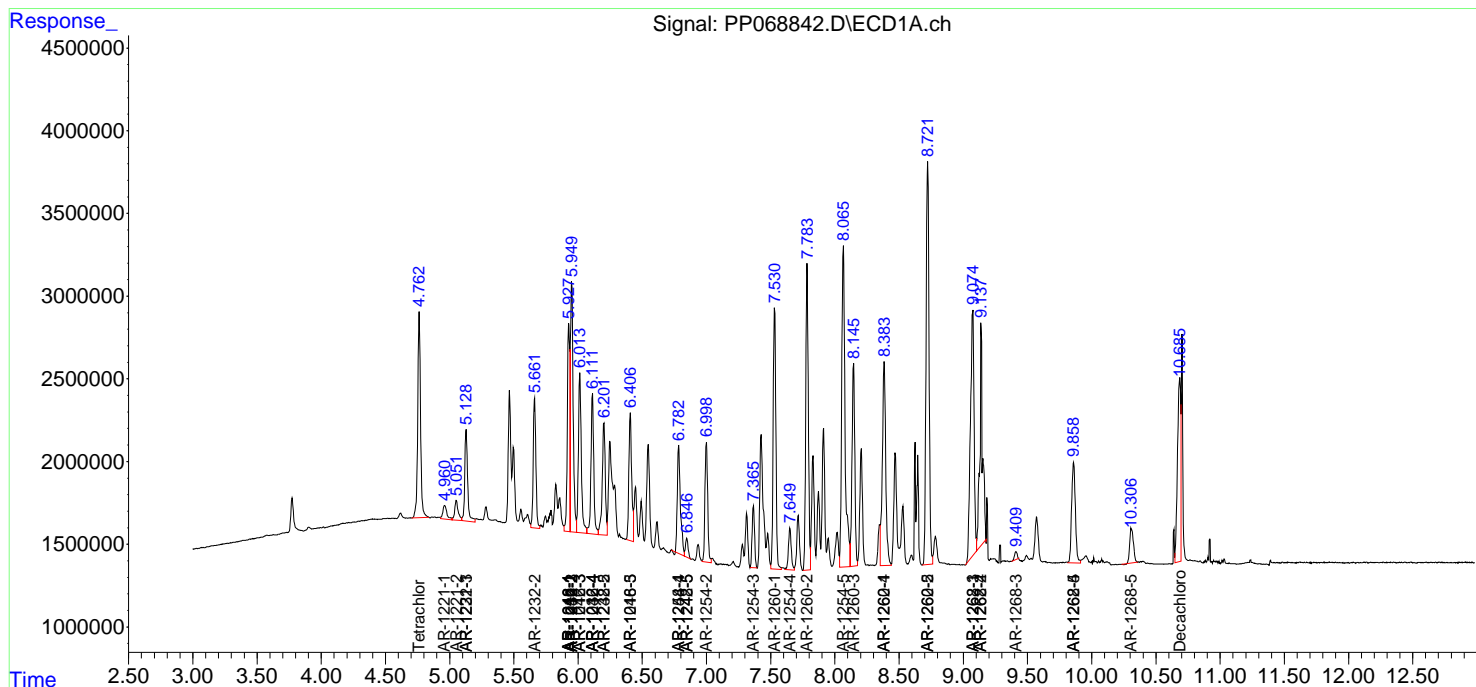
(f)=RT Delta > 1/2 Window (#)=Amounts differ by > 25% (m)=manual int.

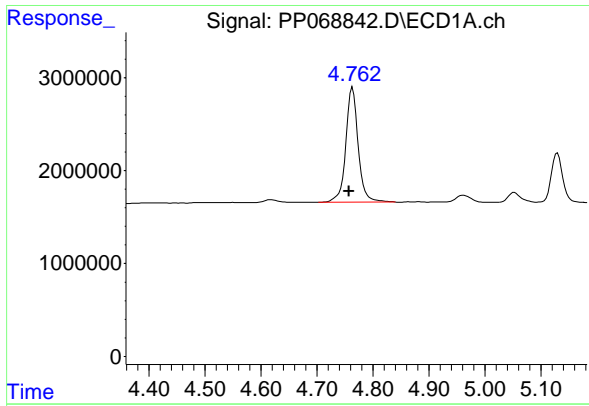
Data Path : Z:\pestpcbsrv\HPCHEM1\ECD_P\Data\PP120624\
 Data File : PP068842.D
 Signal(s) : Signal #1: ECD1A.ch Signal #2: ECD2B.ch
 Acq On : 06 Dec 2024 13:25
 Operator : YP\AJ
 Sample : PB165421BS
 Misc :
 ALS Vial : 8 Sample Multiplier: 1

Instrument :
 ECD_P
 ClientSampleId :

Integration File signal 1: autoint1.e
 Integration File signal 2: autoint2.e
 Quant Time: Dec 06 22:55:54 2024
 Quant Method : Z:\pestpcbsrv\HPCHEM1\ECD_P\methods\PP110724.M
 Quant Title : GC EXTRACTABLES
 QLast Update : Fri Nov 08 11:04:08 2024
 Response via : Initial Calibration
 Integrator: ChemStation

Volume Inj. : 2 µl
 Signal #1 Phase : ZB-MR1 Signal #2 Phase: ZB-MR2
 Signal #1 Info : 30Mx0.32mmx 0.50µ Signal #2 Info : 30M x 0.32mm x 0.25µm

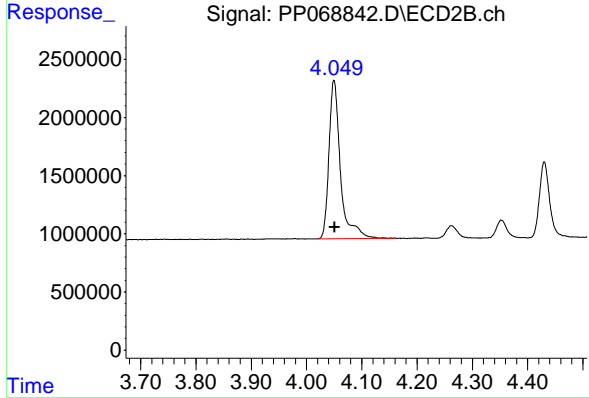




#1 Tetrachloro-m-xylene

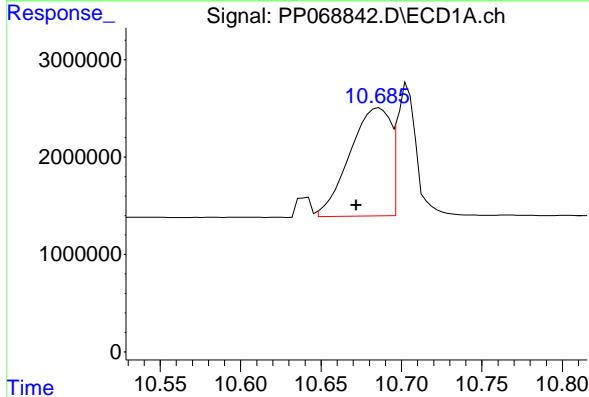
R.T.: 4.763 min
 Delta R.T.: 0.006 min
 Response: 19013643
 Conc: 19.59 ng/ml

Instrument :
 ECD_P
 ClientSampleId :



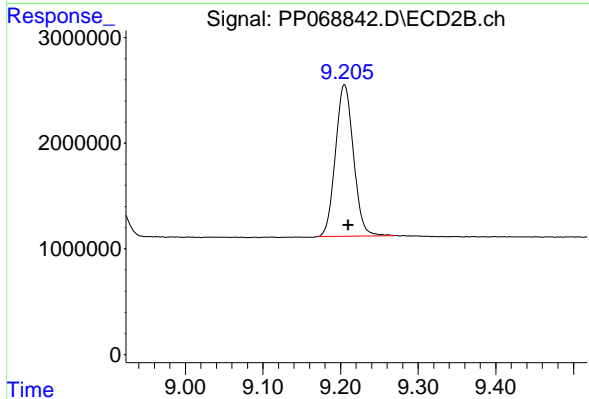
#1 Tetrachloro-m-xylene

R.T.: 4.050 min
 Delta R.T.: -0.001 min
 Response: 19688995
 Conc: 20.33 ng/ml



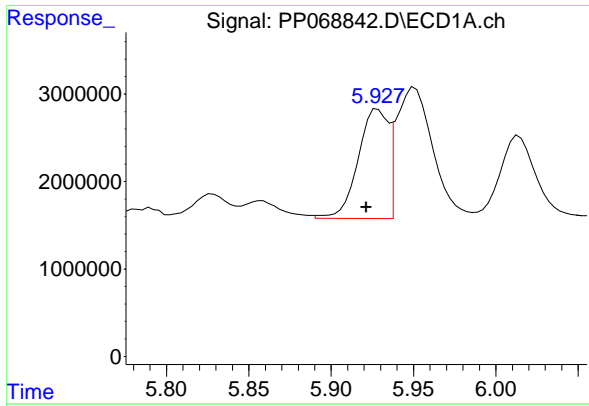
#2 Decachlorobiphenyl

R.T.: 10.686 min
 Delta R.T.: 0.014 min
 Response: 19456109
 Conc: 15.55 ng/ml



#2 Decachlorobiphenyl

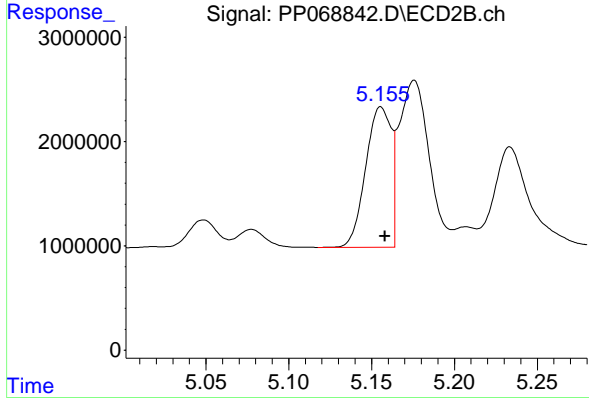
R.T.: 9.205 min
 Delta R.T.: -0.005 min
 Response: 23196546
 Conc: 20.51 ng/ml



#3 AR-1016-1

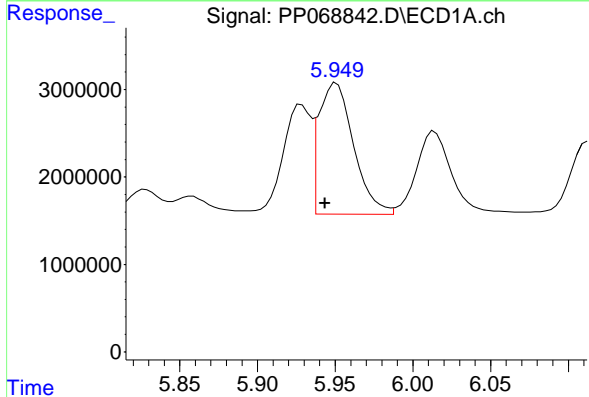
R.T.: 5.928 min
 Delta R.T.: 0.007 min
 Response: 15831920
 Conc: 440.56 ng/ml

Instrument :
 ECD_P
 ClientSampleId :



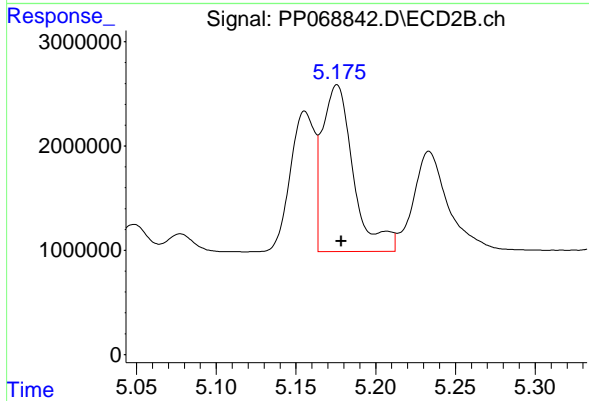
#3 AR-1016-1

R.T.: 5.156 min
 Delta R.T.: -0.002 min
 Response: 14360321
 Conc: 434.54 ng/ml



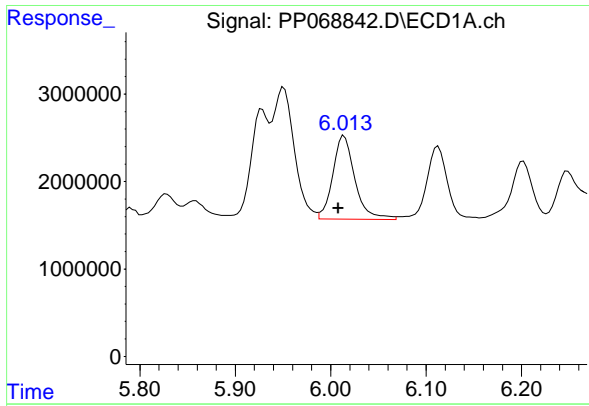
#4 AR-1016-2

R.T.: 5.951 min
 Delta R.T.: 0.007 min
 Response: 23408288
 Conc: 442.08 ng/ml



#4 AR-1016-2

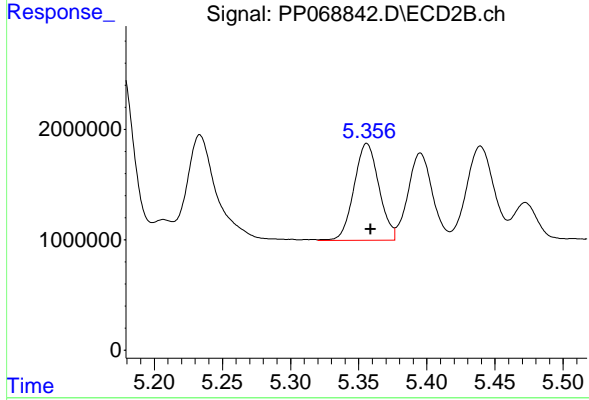
R.T.: 5.176 min
 Delta R.T.: -0.003 min
 Response: 21679772
 Conc: 463.81 ng/ml



#5 AR-1016-3

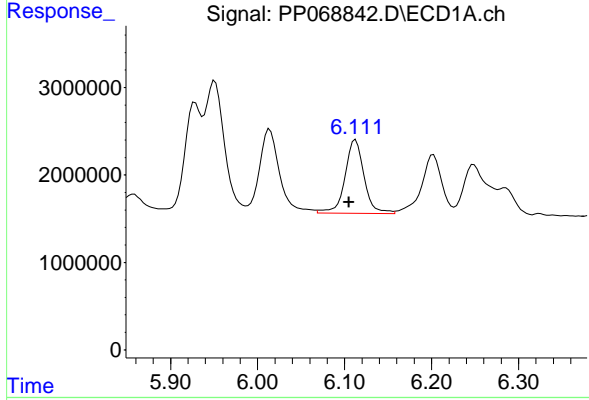
R.T.: 6.014 min
 Delta R.T.: 0.006 min
 Response: 15349317
 Conc: 463.61 ng/ml

Instrument :
 ECD_P
 ClientSampleId :



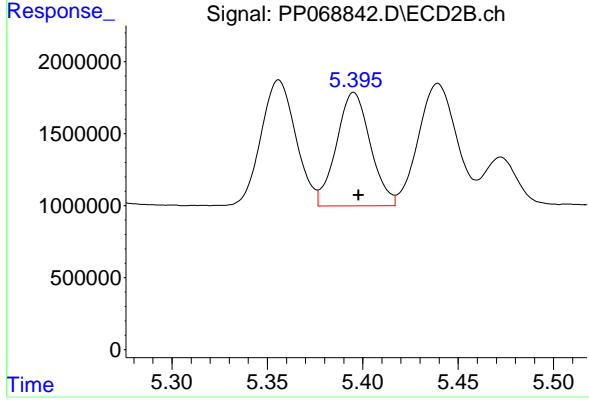
#5 AR-1016-3

R.T.: 5.356 min
 Delta R.T.: -0.003 min
 Response: 11158101
 Conc: 412.65 ng/ml



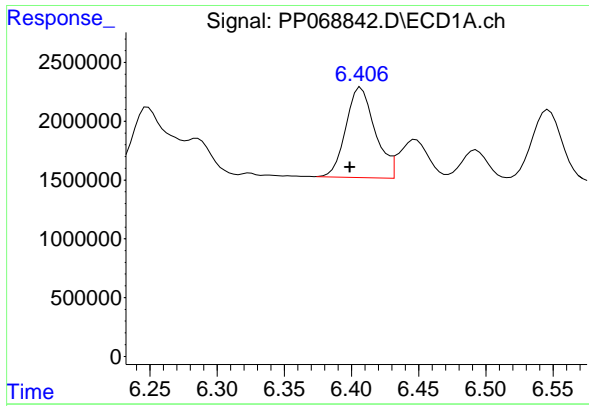
#6 AR-1016-4

R.T.: 6.113 min
 Delta R.T.: 0.007 min
 Response: 12896601
 Conc: 490.70 ng/ml



#6 AR-1016-4

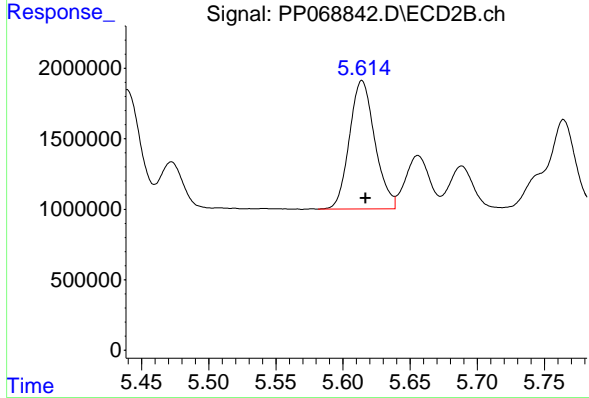
R.T.: 5.395 min
 Delta R.T.: -0.003 min
 Response: 9775029
 Conc: 414.28 ng/ml



#7 AR-1016-5

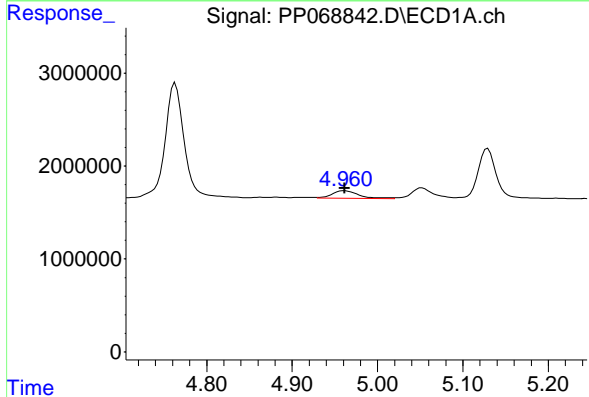
R.T.: 6.407 min
 Delta R.T.: 0.008 min
 Response: 11640130
 Conc: 412.65 ng/ml

Instrument :
 ECD_P
 ClientSampleId :



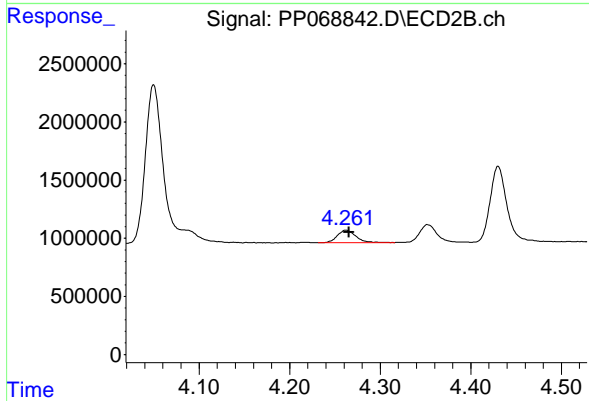
#7 AR-1016-5

R.T.: 5.614 min
 Delta R.T.: -0.003 min
 Response: 12057499
 Conc: 406.77 ng/ml



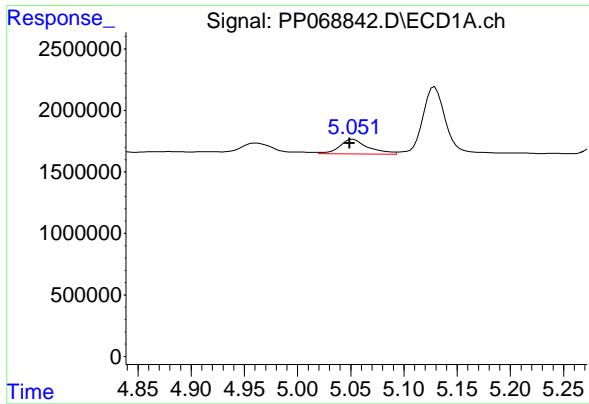
#8 AR-1221-1

R.T.: 4.961 min
 Delta R.T.: 0.000 min
 Response: 1798457
 Conc: 132.61 ng/ml



#8 AR-1221-1

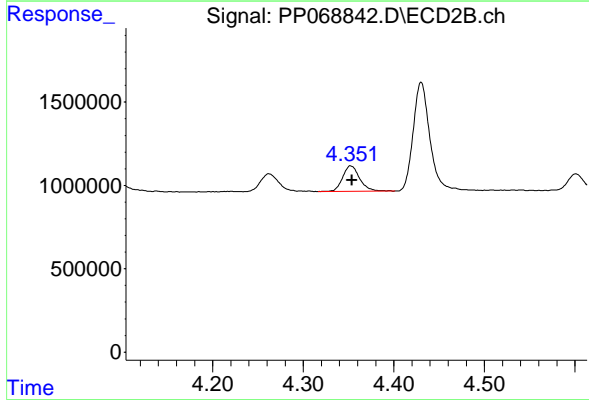
R.T.: 4.262 min
 Delta R.T.: -0.003 min
 Response: 1500184
 Conc: 118.96 ng/ml



#9 AR-1221-2

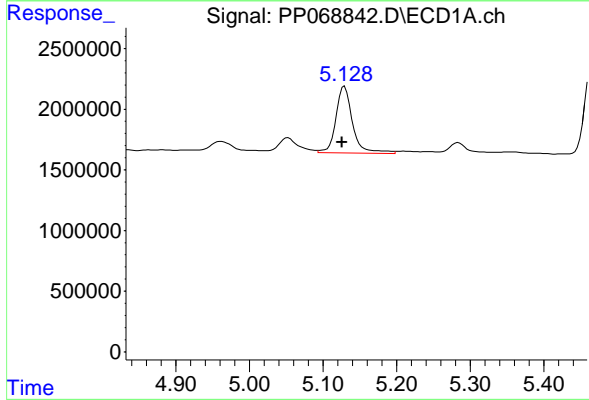
R.T.: 5.052 min
 Delta R.T.: 0.003 min
 Response: 2242848
 Conc: 222.38 ng/ml

Instrument :
 ECD_P
 ClientSampleId :



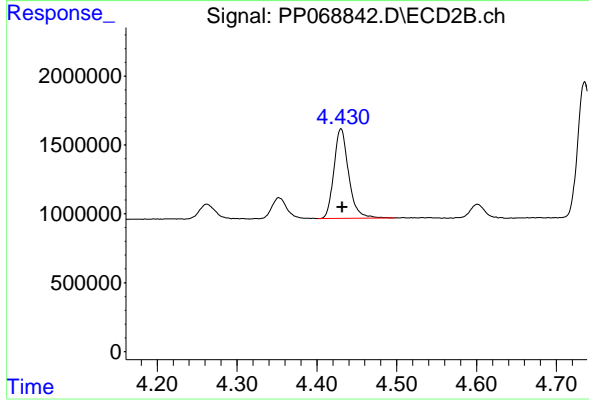
#9 AR-1221-2

R.T.: 4.353 min
 Delta R.T.: -0.001 min
 Response: 2008584
 Conc: 205.53 ng/ml



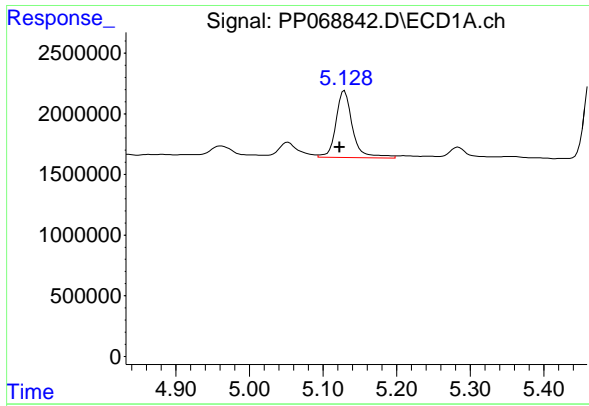
#10 AR-1221-3

R.T.: 5.129 min
 Delta R.T.: 0.003 min
 Response: 8670435
 Conc: 286.53 ng/ml



#10 AR-1221-3

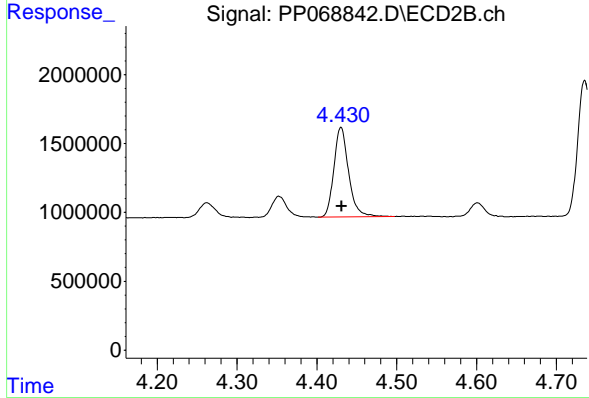
R.T.: 4.430 min
 Delta R.T.: -0.002 min
 Response: 8345414
 Conc: 273.70 ng/ml



#11 AR-1232-1

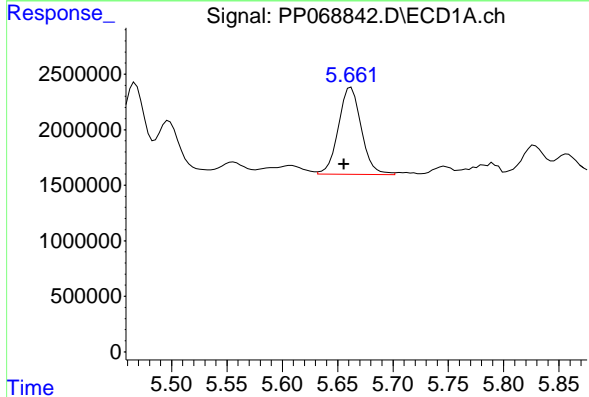
R.T.: 5.129 min
 Delta R.T.: 0.007 min
 Response: 8670435
 Conc: 371.81 ng/ml

Instrument :
 ECD_P
 ClientSampleId :



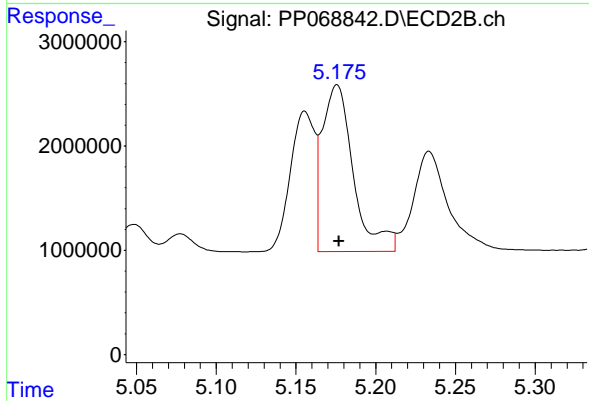
#11 AR-1232-1

R.T.: 4.430 min
 Delta R.T.: 0.000 min
 Response: 8345414
 Conc: 353.60 ng/ml



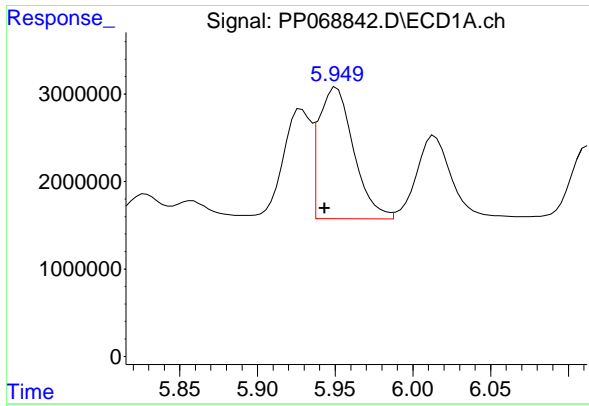
#12 AR-1232-2

R.T.: 5.662 min
 Delta R.T.: 0.006 min
 Response: 11312532
 Conc: 756.45 ng/ml



#12 AR-1232-2

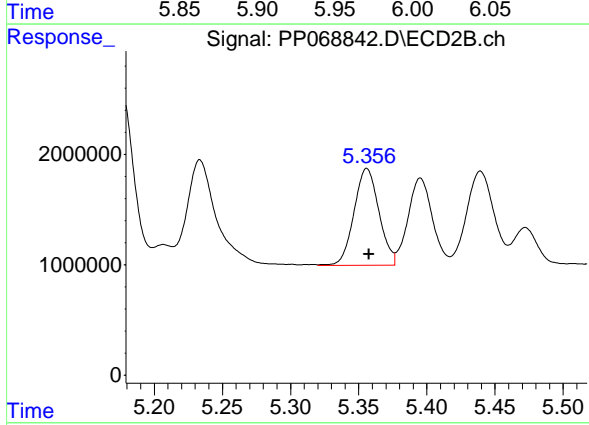
R.T.: 5.176 min
 Delta R.T.: -0.001 min
 Response: 21679772
 Conc: 995.16 ng/ml



#13 AR-1232-3

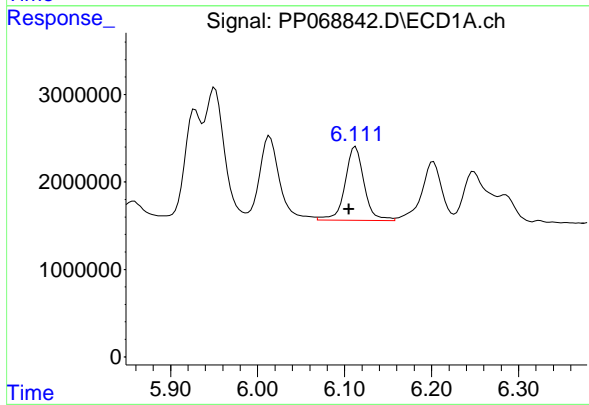
R.T.: 5.951 min
 Delta R.T.: 0.008 min
 Response: 23408288
 Conc: 934.31 ng/ml

Instrument :
 ECD_P
 ClientSampleId :



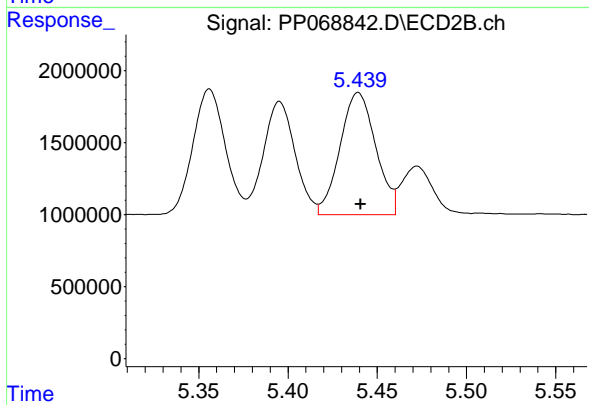
#13 AR-1232-3

R.T.: 5.356 min
 Delta R.T.: -0.001 min
 Response: 11158101
 Conc: 995.31 ng/ml



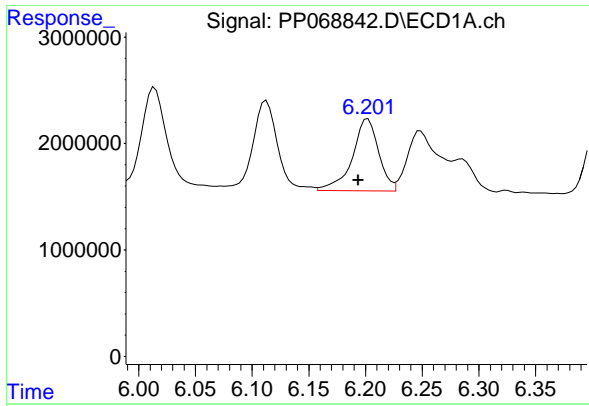
#14 AR-1232-4

R.T.: 6.113 min
 Delta R.T.: 0.007 min
 Response: 12896601
 Conc: 1041.88 ng/ml



#14 AR-1232-4

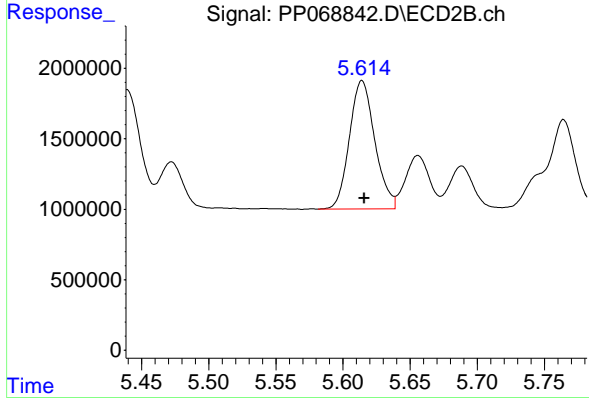
R.T.: 5.439 min
 Delta R.T.: -0.001 min
 Response: 11833954
 Conc: 1080.08 ng/ml



#15 AR-1232-5

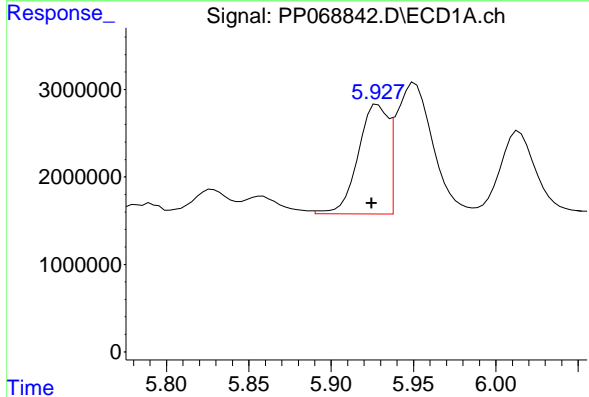
R.T.: 6.202 min
 Delta R.T.: 0.008 min
 Response: 10957663
 Conc: 1101.85 ng/ml

Instrument :
 ECD_P
 ClientSampleId :



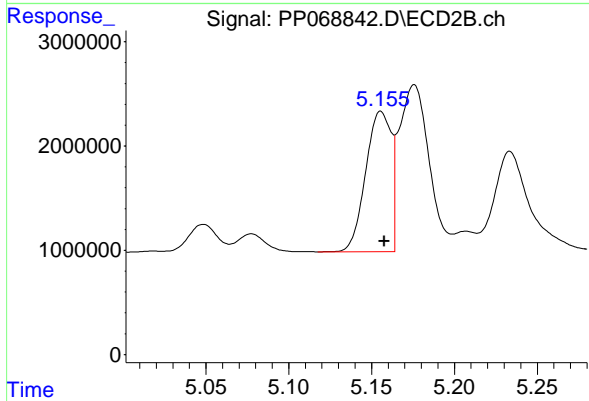
#15 AR-1232-5

R.T.: 5.614 min
 Delta R.T.: -0.002 min
 Response: 12057499
 Conc: 978.69 ng/ml



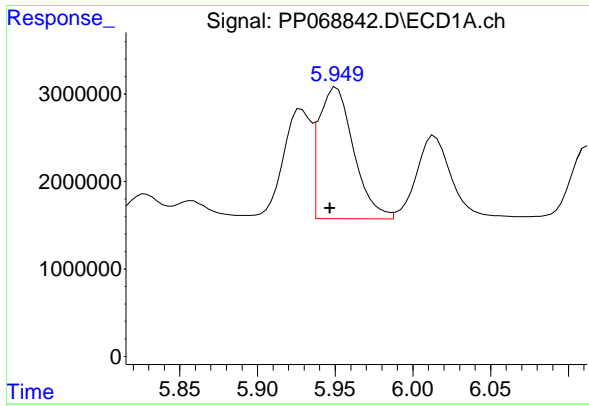
#16 AR-1242-1

R.T.: 5.928 min
 Delta R.T.: 0.004 min
 Response: 15831920
 Conc: 529.97 ng/ml



#16 AR-1242-1

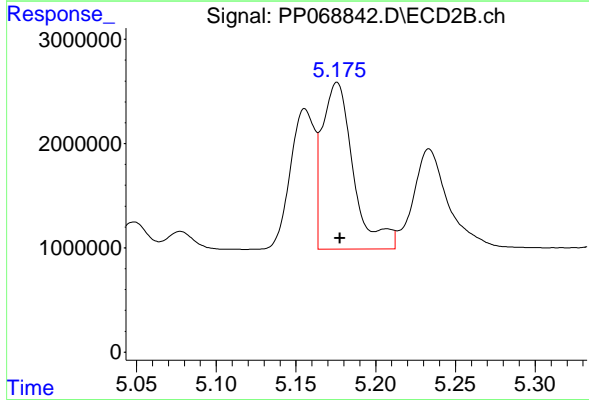
R.T.: 5.156 min
 Delta R.T.: -0.002 min
 Response: 14360321
 Conc: 516.75 ng/ml



#17 AR-1242-2

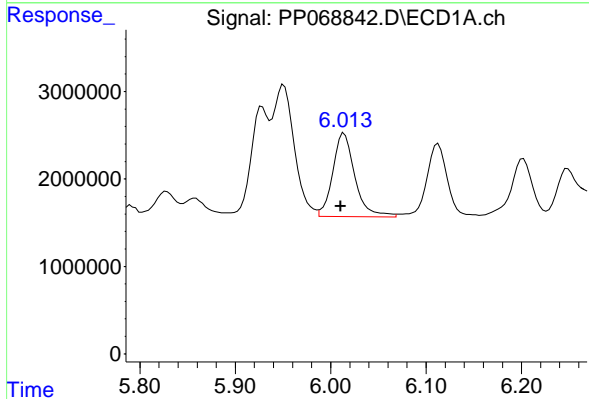
R.T.: 5.951 min
Delta R.T.: 0.004 min
Response: 23408288
Conc: 530.78 ng/ml

Instrument :
ECD_P
ClientSampleId :



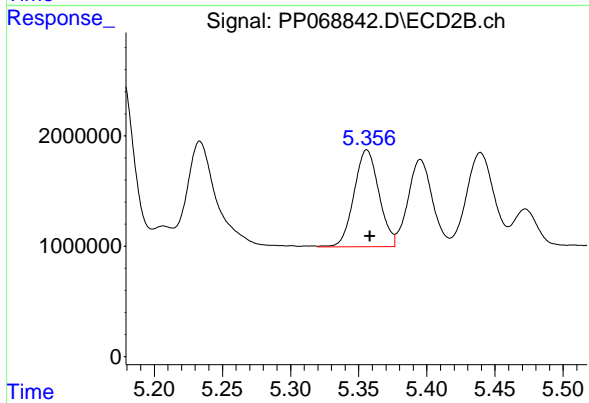
#17 AR-1242-2

R.T.: 5.176 min
Delta R.T.: -0.002 min
Response: 21679772
Conc: 561.29 ng/ml



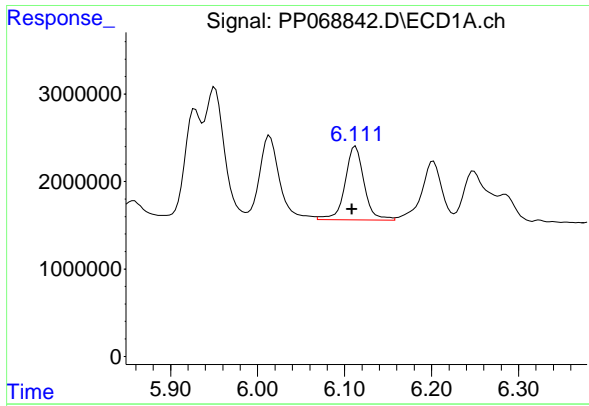
#18 AR-1242-3

R.T.: 6.014 min
Delta R.T.: 0.004 min
Response: 15349317
Conc: 550.98 ng/ml



#18 AR-1242-3

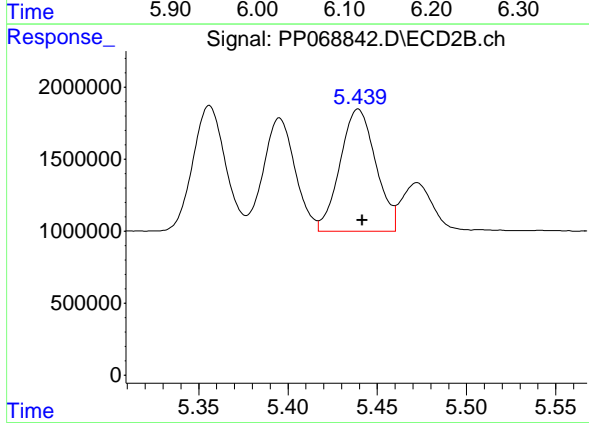
R.T.: 5.356 min
Delta R.T.: -0.002 min
Response: 11158101
Conc: 524.35 ng/ml



#19 AR-1242-4

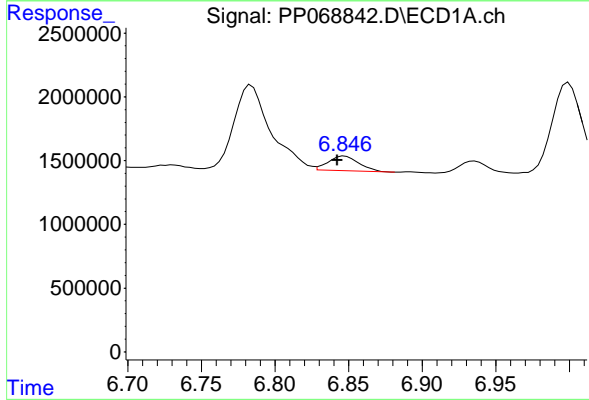
R.T.: 6.113 min
 Delta R.T.: 0.004 min
 Response: 12896601
 Conc: 589.42 ng/ml

Instrument :
 ECD_P
 ClientSampleId :



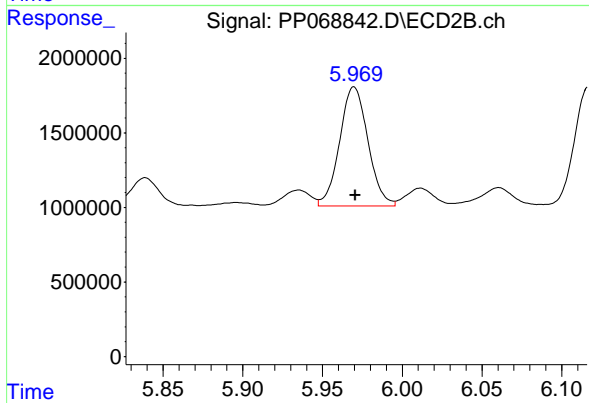
#19 AR-1242-4

R.T.: 5.439 min
 Delta R.T.: -0.002 min
 Response: 11833954
 Conc: 519.18 ng/ml



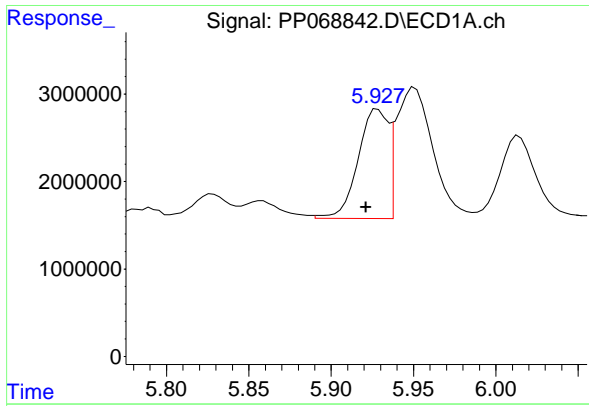
#20 AR-1242-5

R.T.: 6.847 min
 Delta R.T.: 0.005 min
 Response: 1652312
 Conc: 68.05 ng/ml



#20 AR-1242-5

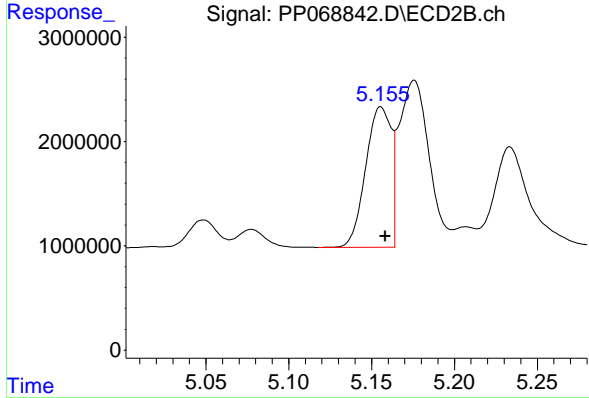
R.T.: 5.970 min
 Delta R.T.: 0.000 min
 Response: 9855927
 Conc: 359.03 ng/ml



#21 AR-1248-1

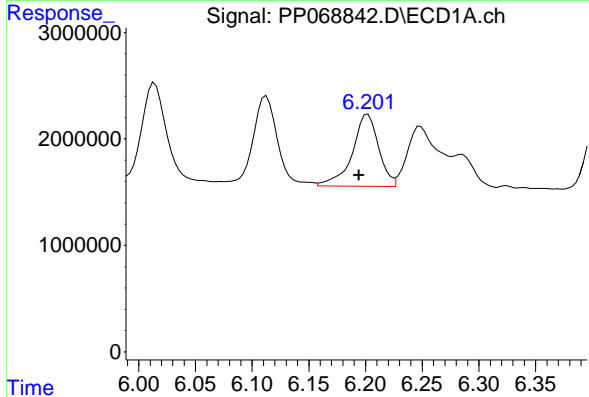
R.T.: 5.928 min
 Delta R.T.: 0.007 min
 Response: 15831920
 Conc: 701.63 ng/ml

Instrument :
 ECD_P
 ClientSampleId :



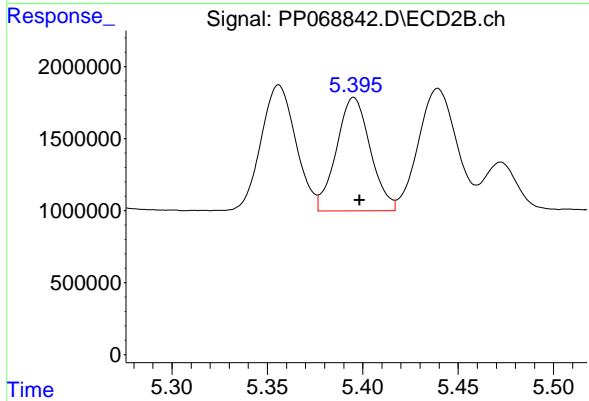
#21 AR-1248-1

R.T.: 5.156 min
 Delta R.T.: -0.002 min
 Response: 14360321
 Conc: 657.30 ng/ml



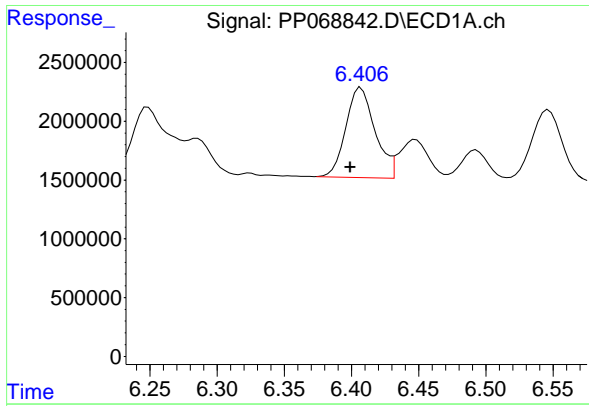
#22 AR-1248-2

R.T.: 6.202 min
 Delta R.T.: 0.008 min
 Response: 10957663
 Conc: 326.02 ng/ml



#22 AR-1248-2

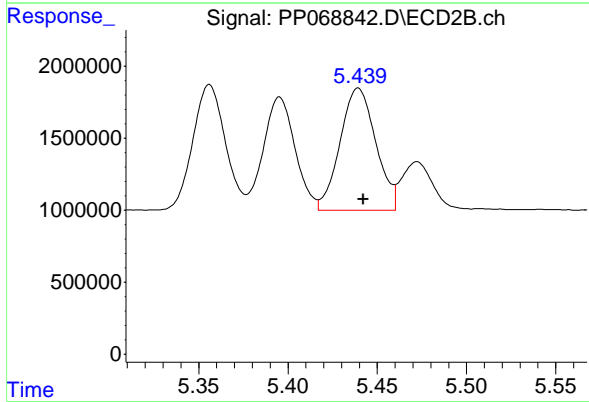
R.T.: 5.395 min
 Delta R.T.: -0.003 min
 Response: 9775029
 Conc: 305.77 ng/ml



#23 AR-1248-3

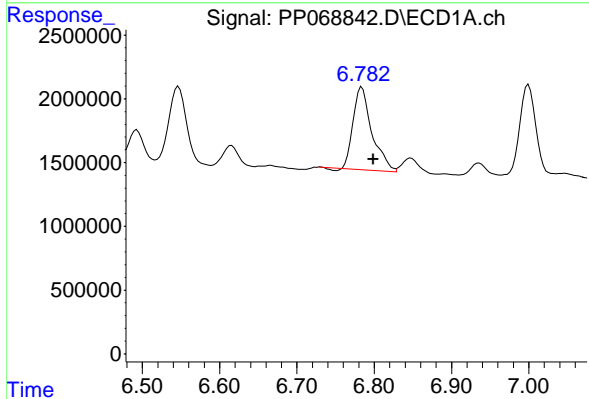
R.T.: 6.407 min
 Delta R.T.: 0.008 min
 Response: 11640130
 Conc: 318.77 ng/ml

Instrument :
 ECD_P
 ClientSampleId :



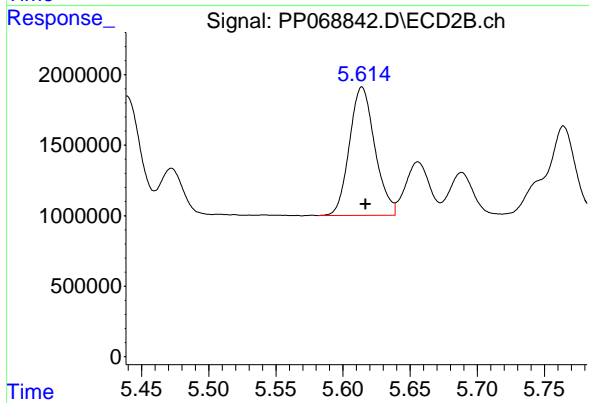
#23 AR-1248-3

R.T.: 5.439 min
 Delta R.T.: -0.003 min
 Response: 11833954
 Conc: 353.17 ng/ml



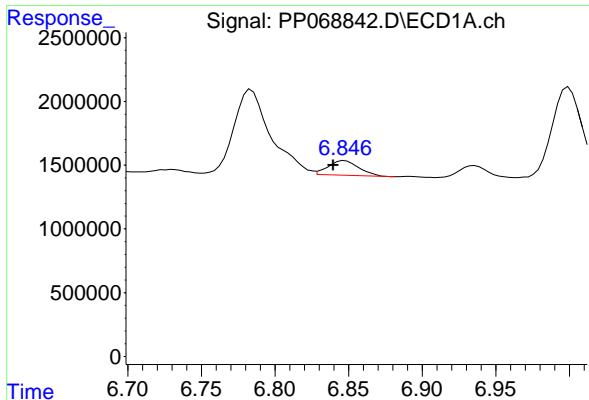
#24 AR-1248-4

R.T.: 6.784 min
 Delta R.T.: -0.015 min
 Response: 10854813
 Conc: 253.70 ng/ml



#24 AR-1248-4

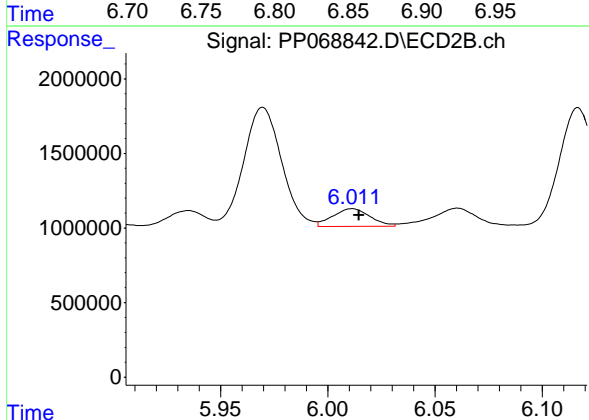
R.T.: 5.614 min
 Delta R.T.: -0.003 min
 Response: 12057499
 Conc: 310.53 ng/ml



#25 AR-1248-5

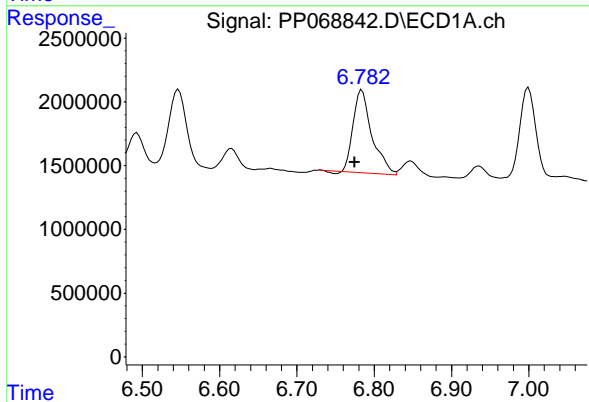
R.T.: 6.847 min
 Delta R.T.: 0.008 min
 Response: 1652312
 Conc: 39.78 ng/ml

Instrument : ECD_P
 ClientSampleId :



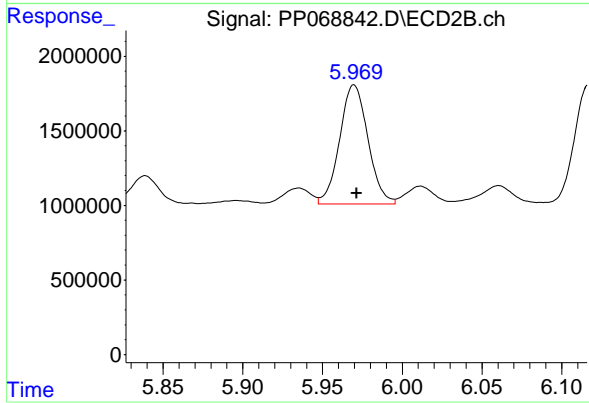
#25 AR-1248-5

R.T.: 6.011 min
 Delta R.T.: -0.003 min
 Response: 1430286
 Conc: 38.59 ng/ml



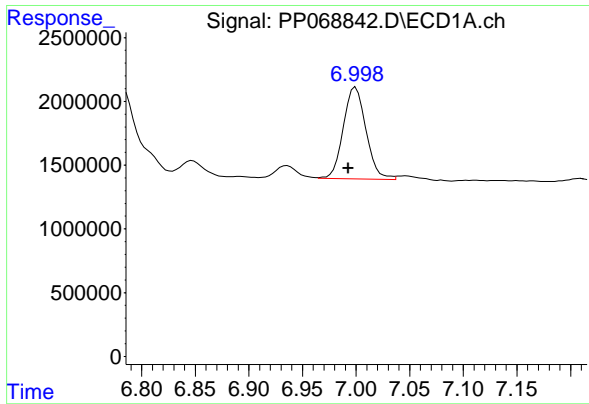
#26 AR-1254-1

R.T.: 6.784 min
 Delta R.T.: 0.009 min
 Response: 10854813
 Conc: 209.20 ng/ml



#26 AR-1254-1

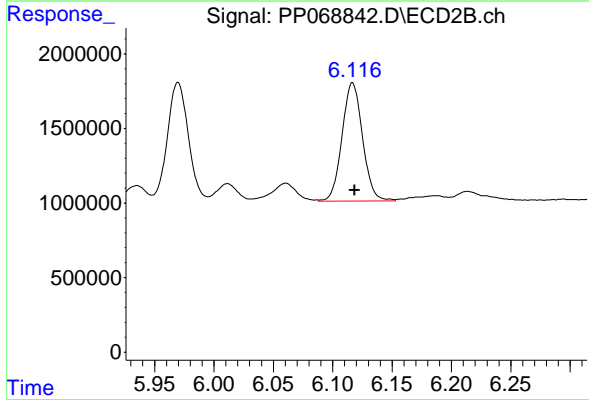
R.T.: 5.970 min
 Delta R.T.: -0.002 min
 Response: 9855927
 Conc: 162.53 ng/ml



#27 AR-1254-2

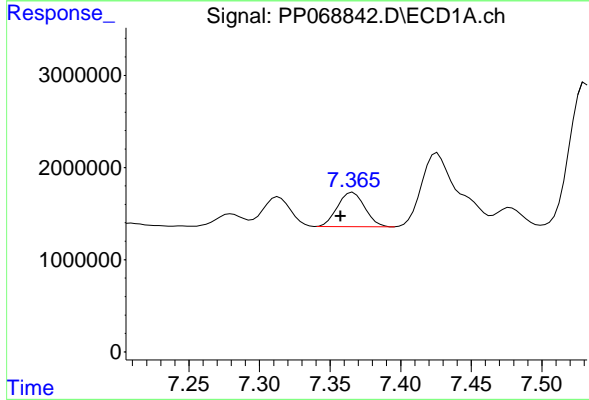
R.T.: 7.000 min
 Delta R.T.: 0.007 min
 Response: 10624031
 Conc: 155.69 ng/ml

Instrument :
 ECD_P
 ClientSampleId :



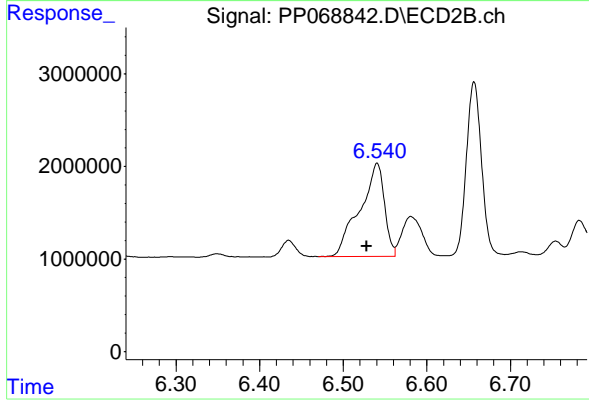
#27 AR-1254-2

R.T.: 6.117 min
 Delta R.T.: -0.002 min
 Response: 9531596
 Conc: 180.74 ng/ml



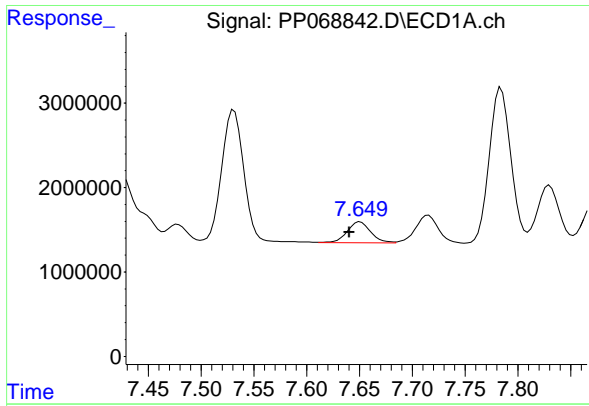
#28 AR-1254-3

R.T.: 7.366 min
 Delta R.T.: 0.008 min
 Response: 5019906
 Conc: 70.25 ng/ml



#28 AR-1254-3

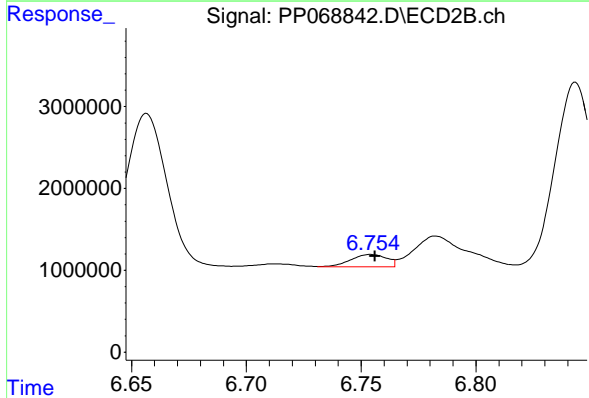
R.T.: 6.540 min
 Delta R.T.: 0.012 min
 Response: 20616749
 Conc: 247.62 ng/ml



#29 AR-1254-4

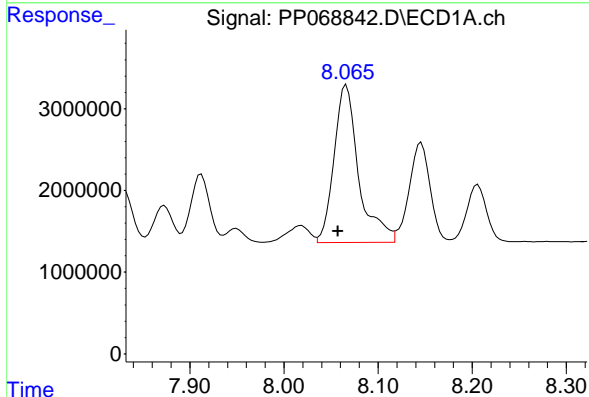
R.T.: 7.650 min
 Delta R.T.: 0.010 min
 Response: 3873598
 Conc: 71.98 ng/ml

Instrument :
 ECD_P
 ClientSampleId :



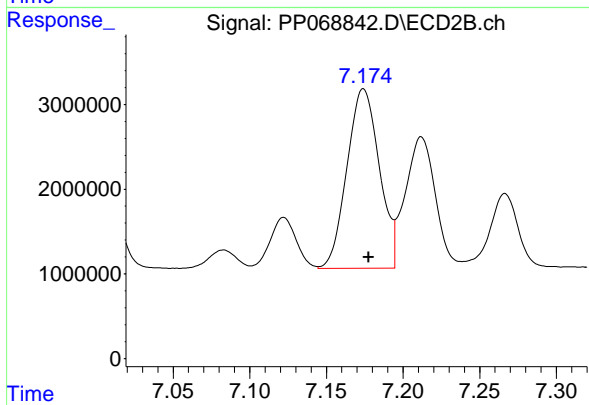
#29 AR-1254-4

R.T.: 6.754 min
 Delta R.T.: -0.002 min
 Response: 1663825
 Conc: 34.22 ng/ml



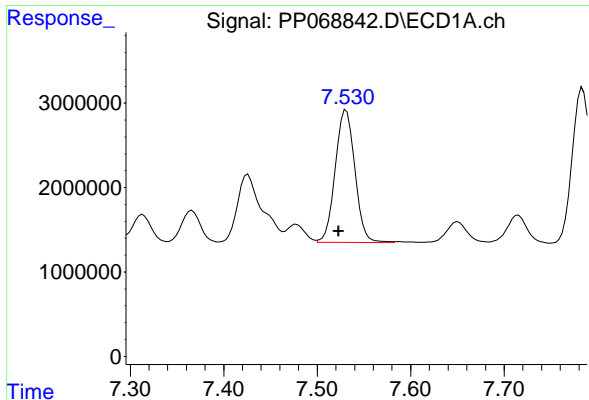
#30 AR-1254-5

R.T.: 8.066 min
 Delta R.T.: 0.009 min
 Response: 35199247
 Conc: 561.69 ng/ml



#30 AR-1254-5

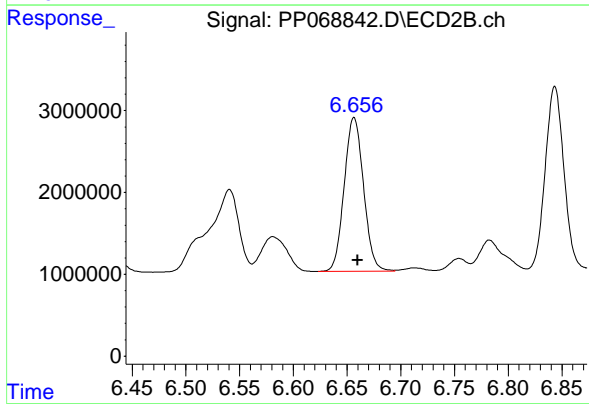
R.T.: 7.174 min
 Delta R.T.: -0.003 min
 Response: 31351598
 Conc: 420.07 ng/ml



#31 AR-1260-1

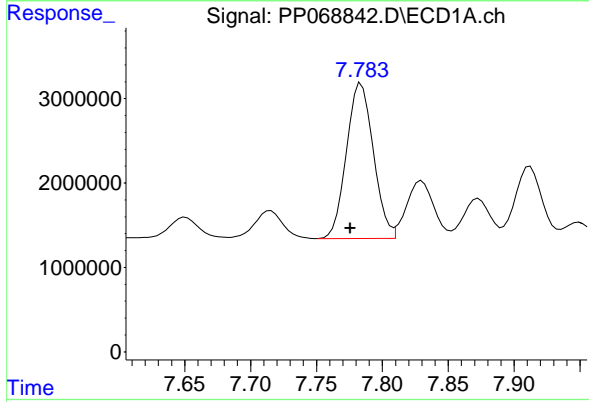
R.T.: 7.531 min
 Delta R.T.: 0.008 min
 Response: 22919322
 Conc: 423.61 ng/ml

Instrument :
 ECD_P
 ClientSampleId :



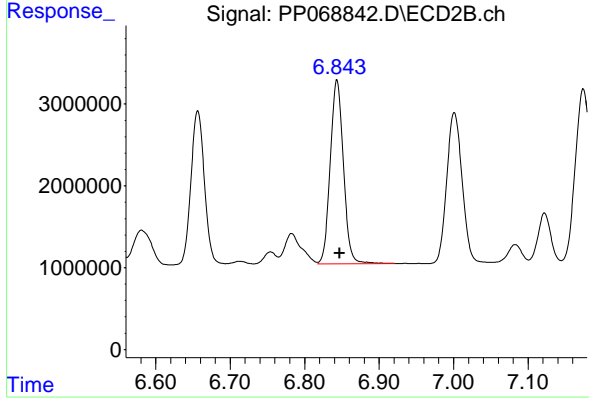
#31 AR-1260-1

R.T.: 6.657 min
 Delta R.T.: -0.003 min
 Response: 23590677
 Conc: 423.92 ng/ml



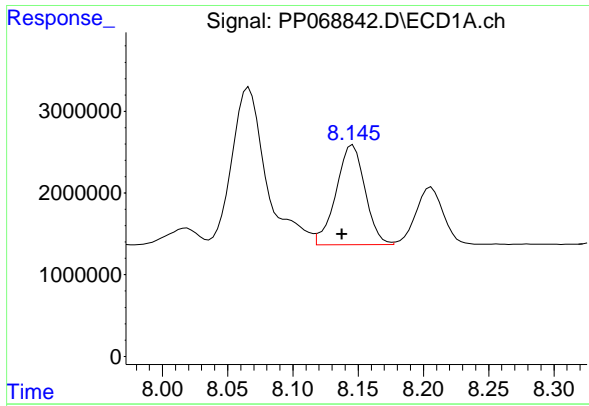
#32 AR-1260-2

R.T.: 7.784 min
 Delta R.T.: 0.008 min
 Response: 26108980
 Conc: 410.45 ng/ml



#32 AR-1260-2

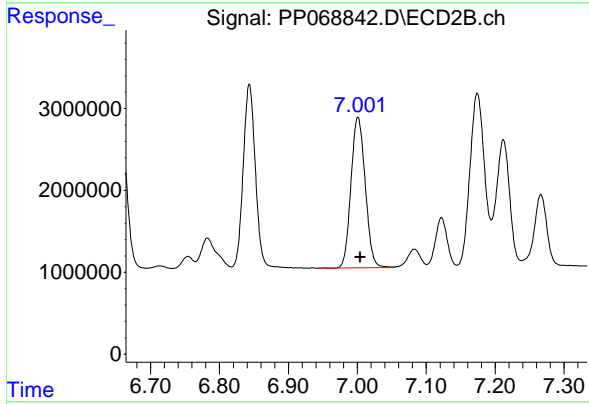
R.T.: 6.843 min
 Delta R.T.: -0.004 min
 Response: 27662544
 Conc: 417.64 ng/ml



#33 AR-1260-3

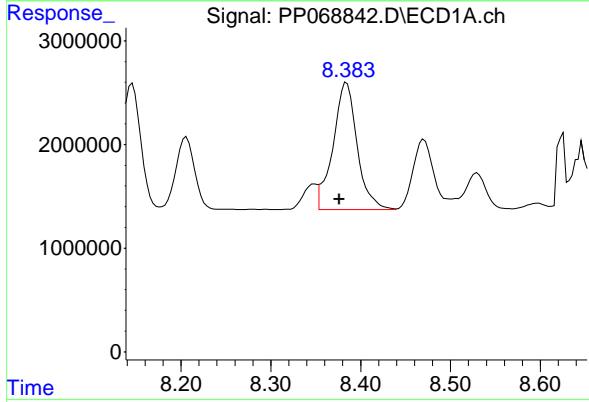
R.T.: 8.146 min
 Delta R.T.: 0.008 min
 Response: 18829508
 Conc: 350.04 ng/ml

Instrument :
 ECD_P
 ClientSampleId :



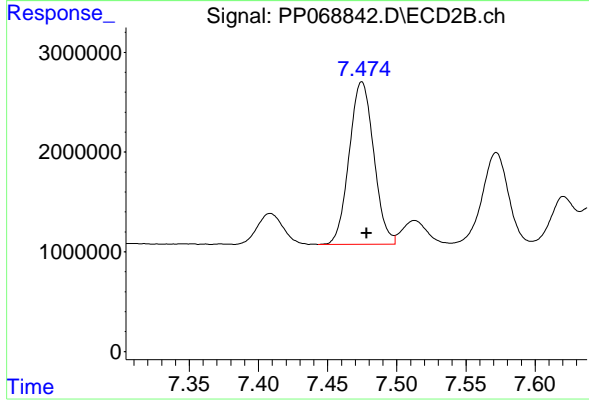
#33 AR-1260-3

R.T.: 7.001 min
 Delta R.T.: -0.003 min
 Response: 26325195
 Conc: 425.34 ng/ml



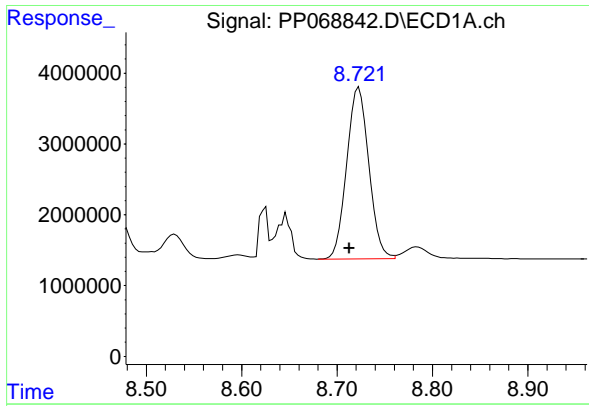
#34 AR-1260-4

R.T.: 8.385 min
 Delta R.T.: 0.008 min
 Response: 22979713
 Conc: 369.28 ng/ml



#34 AR-1260-4

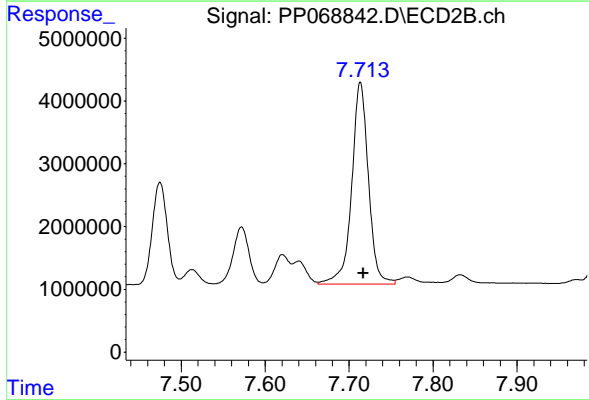
R.T.: 7.475 min
 Delta R.T.: -0.003 min
 Response: 20138396
 Conc: 381.86 ng/ml



#35 AR-1260-5

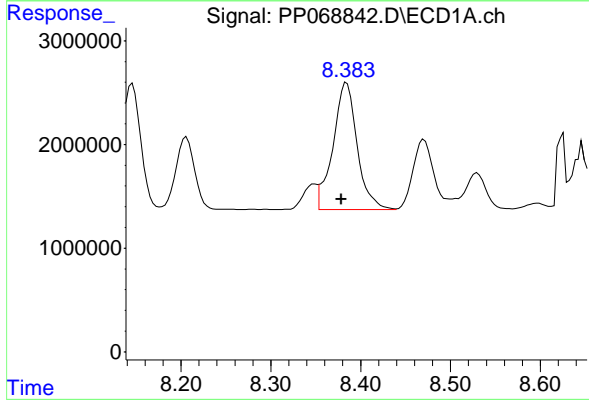
R.T.: 8.723 min
 Delta R.T.: 0.010 min
 Response: 39315220
 Conc: 347.36 ng/ml

Instrument :
 ECD_P
 ClientSampleId :



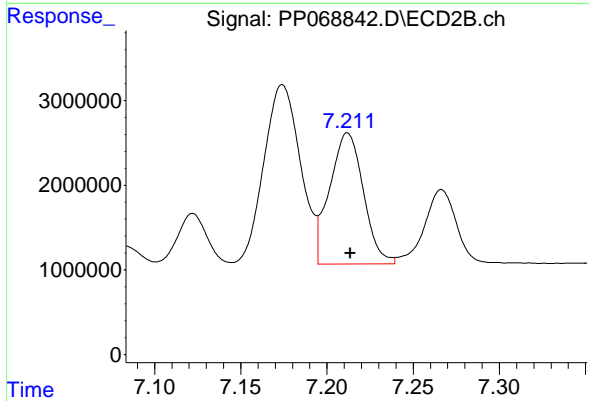
#35 AR-1260-5

R.T.: 7.713 min
 Delta R.T.: -0.003 min
 Response: 44491346
 Conc: 373.64 ng/ml



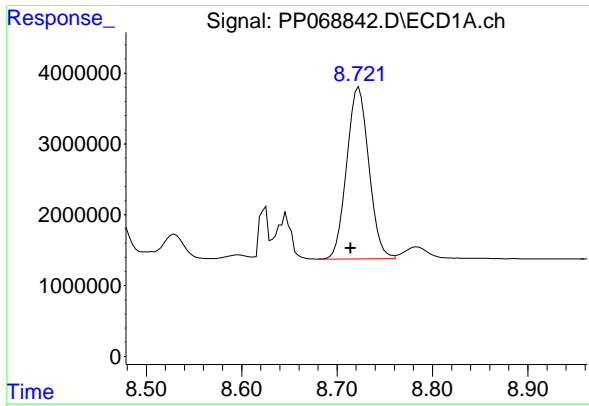
#36 AR-1262-1

R.T.: 8.385 min
 Delta R.T.: 0.006 min
 Response: 22979713
 Conc: 309.98 ng/ml



#36 AR-1262-1

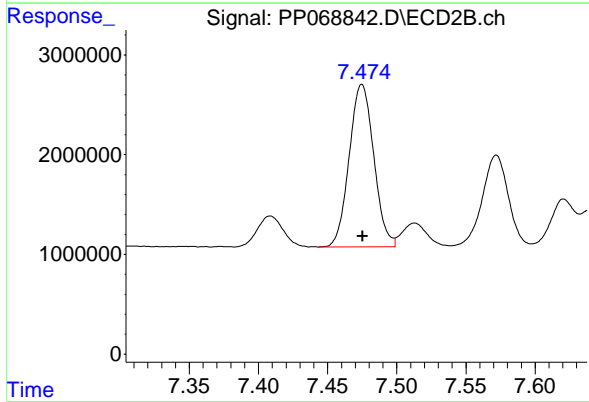
R.T.: 7.212 min
 Delta R.T.: -0.002 min
 Response: 21142170
 Conc: 272.46 ng/ml



#37 AR-1262-2

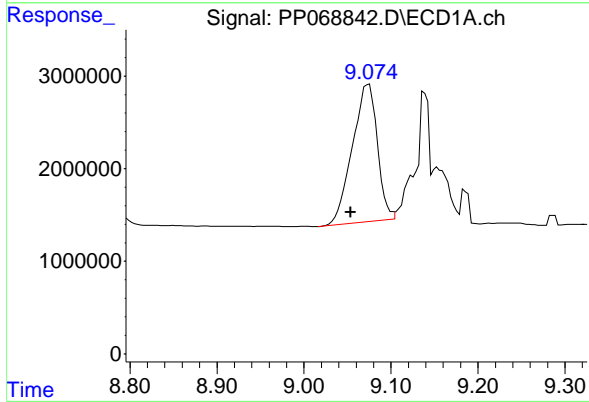
R.T.: 8.723 min
 Delta R.T.: 0.009 min
 Response: 39315220
 Conc: 304.77 ng/ml

Instrument :
 ECD_P
 ClientSampleId :



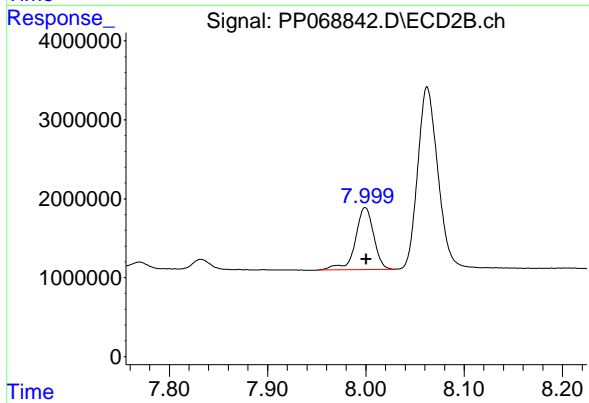
#37 AR-1262-2

R.T.: 7.475 min
 Delta R.T.: 0.000 min
 Response: 20138396
 Conc: 284.86 ng/ml



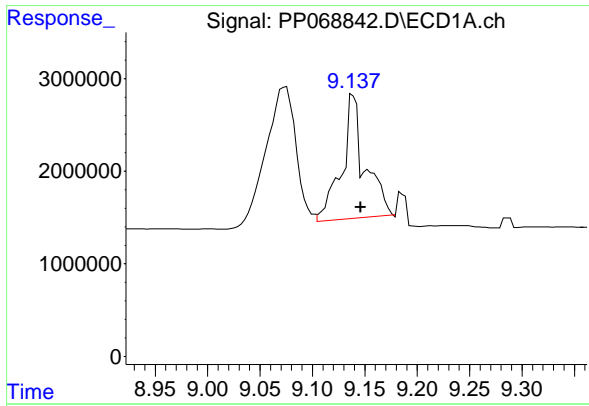
#38 AR-1262-3

R.T.: 9.074 min
 Delta R.T.: 0.020 min
 Response: 29568217
 Conc: 309.03 ng/ml



#38 AR-1262-3

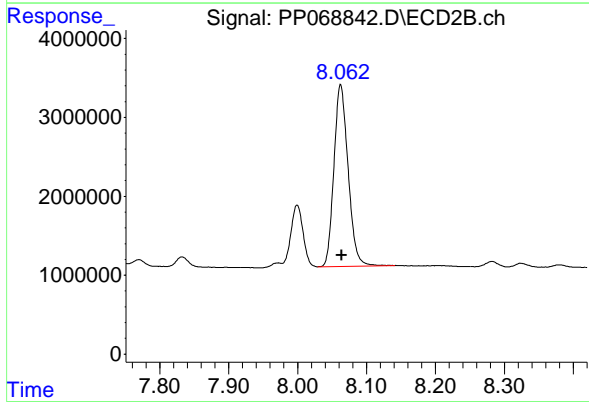
R.T.: 7.999 min
 Delta R.T.: -0.001 min
 Response: 10175906
 Conc: 172.92 ng/ml



#39 AR-1262-4

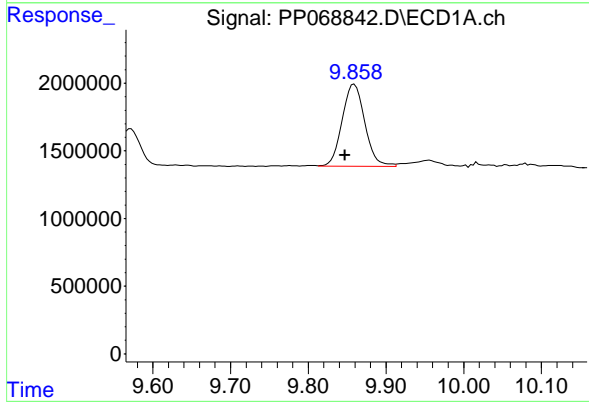
R.T.: 9.140 min
 Delta R.T.: -0.006 min
 Response: 20433143
 Conc: 267.50 ng/ml

Instrument :
 ECD_P
 ClientSampleId :



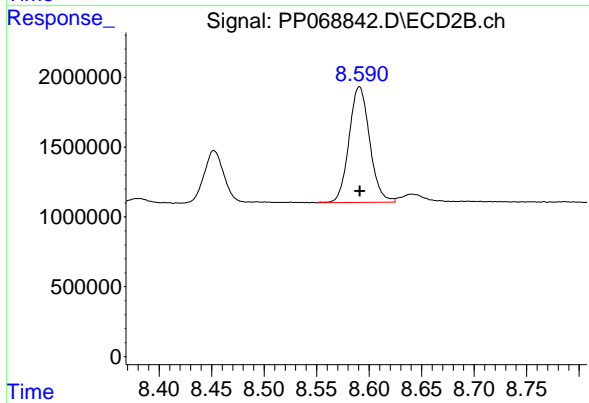
#39 AR-1262-4

R.T.: 8.063 min
 Delta R.T.: -0.002 min
 Response: 32871646
 Conc: 317.29 ng/ml



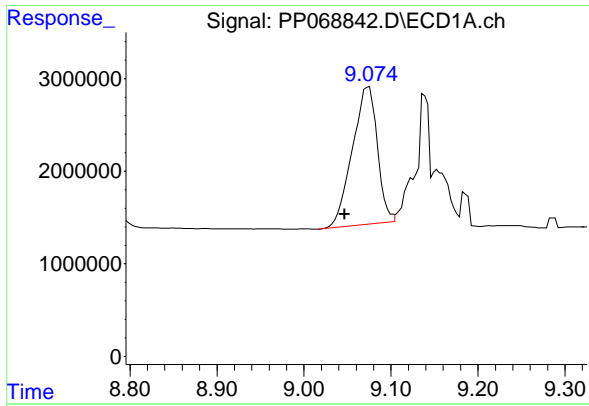
#40 AR-1262-5

R.T.: 9.859 min
 Delta R.T.: 0.012 min
 Response: 12258831
 Conc: 229.21 ng/ml



#40 AR-1262-5

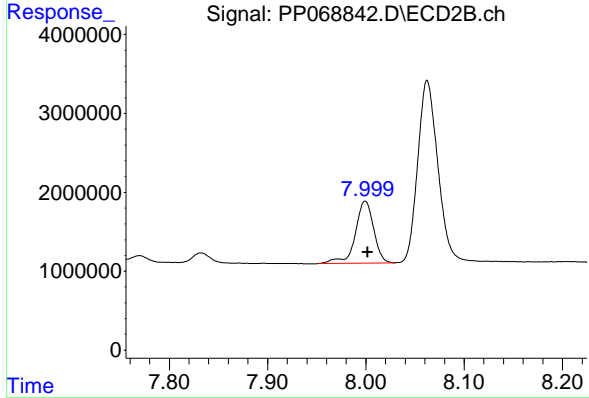
R.T.: 8.591 min
 Delta R.T.: 0.000 min
 Response: 11319141
 Conc: 223.30 ng/ml



#41 AR-1268-1

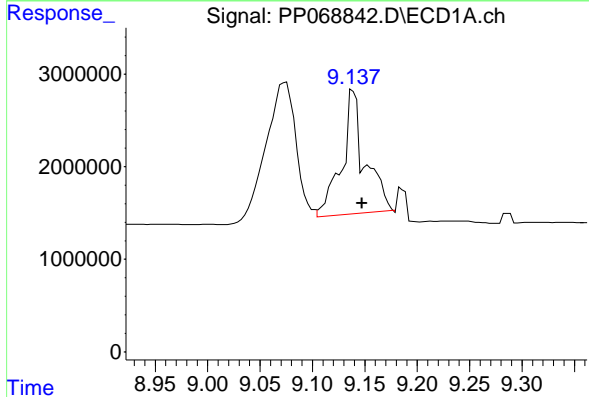
R.T.: 9.074 min
 Delta R.T.: 0.027 min
 Response: 29568217
 Conc: 191.64 ng/ml

Instrument :
 ECD_P
 ClientSampleId :



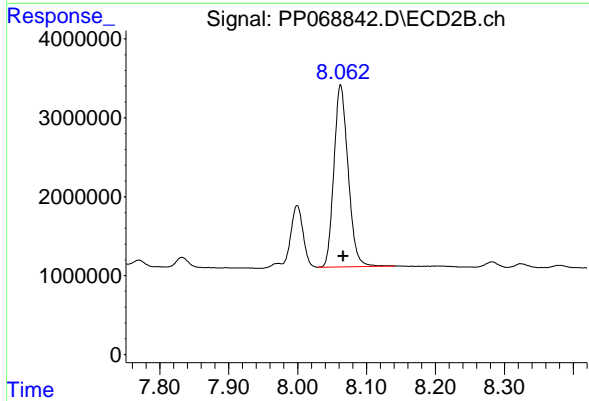
#41 AR-1268-1

R.T.: 7.999 min
 Delta R.T.: -0.002 min
 Response: 10175906
 Conc: 65.34 ng/ml



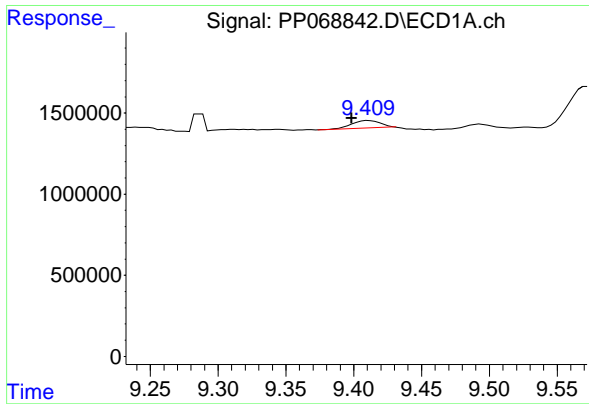
#42 AR-1268-2

R.T.: 9.140 min
 Delta R.T.: -0.008 min
 Response: 20433143
 Conc: 145.96 ng/ml



#42 AR-1268-2

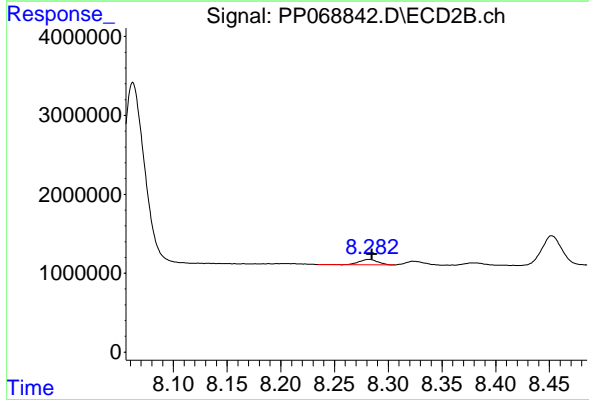
R.T.: 8.063 min
 Delta R.T.: -0.004 min
 Response: 32871646
 Conc: 232.21 ng/ml



#43 AR-1268-3

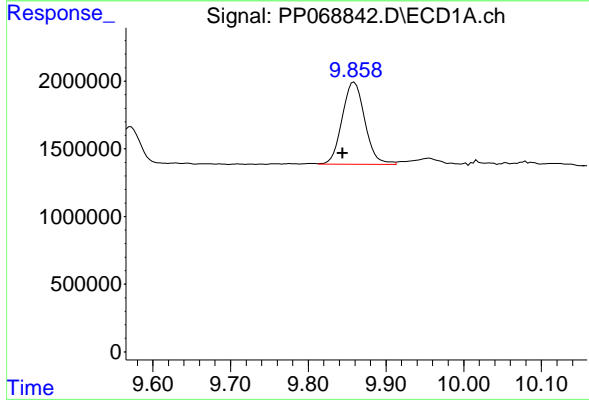
R.T.: 9.411 min
 Delta R.T.: 0.012 min
 Response: 526940
 Conc: 4.19 ng/ml

Instrument :
 ECD_P
 ClientSampleId :



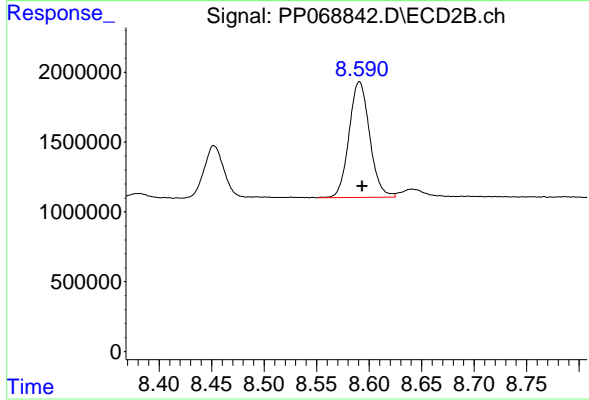
#43 AR-1268-3

R.T.: 8.282 min
 Delta R.T.: -0.003 min
 Response: 785409
 Conc: 6.31 ng/ml



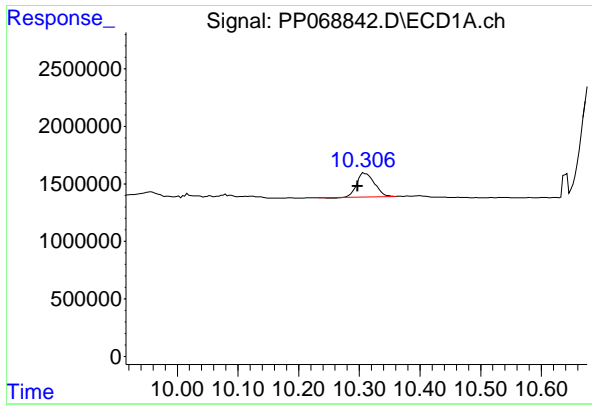
#44 AR-1268-4

R.T.: 9.859 min
 Delta R.T.: 0.015 min
 Response: 12258831
 Conc: 229.41 ng/ml



#44 AR-1268-4

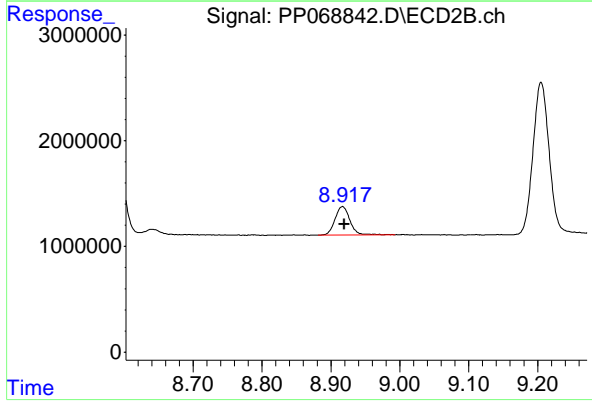
R.T.: 8.591 min
 Delta R.T.: -0.003 min
 Response: 11319141
 Conc: 207.29 ng/ml



#45 AR-1268-5

R.T.: 10.308 min
Delta R.T.: 0.010 min
Response: 4168492
Conc: 10.50 ng/ml

Instrument :
ECD_P
ClientSampleId :



#45 AR-1268-5

R.T.: 8.917 min
Delta R.T.: -0.003 min
Response: 4045392
Conc: 10.74 ng/ml