

Data Path : Z:\pestpcbsrv\HPCHEM1\ECD_P\Data\PP120721\
 Data File : PP041719.D
 Signal(s) : Signal #1: ECD1A.CH Signal #2: ECD2B.CH
 Acq On : 07 Dec 2021 12:49
 Operator : AJ\MA
 Sample : PB141210BL
 Misc :
 ALS Vial : 7 Sample Multiplier: 1

Instrument :
 ECD_P
ClientSampleId :
 PB141210BL

Integration File signal 1: autoint1.e
 Integration File signal 2: autoint2.e
 Quant Time: Dec 08 00:02:41 2021
 Quant Method : Z:\pestpcbsrv\HPCHEM1\ECD_P\methods\PP113021.M
 Quant Title : GC EXTRACTABLES
 QLast Update : Tue Nov 30 23:30:32 2021
 Response via : Initial Calibration
 Integrator: ChemStation 6890 Scale Mode: Small noise peaks clipped

Volume Inj. : 2 µl
 Signal #1 Phase : ZB-MR1 Signal #2 Phase: ZB-MR2
 Signal #1 Info : 30Mx0.32mmx 0.50µ Signal #2 Info : 30M x 0.32mm x 0.25µm

Compound	RT#1	RT#2	Resp#1	Resp#2	ng/ml	ng/ml

System Monitoring Compounds						
1) SA Tetrachlo...	4.744	3.747	460578	661368	20.425	21.773
2) SA Decachlor...	10.636	9.002	437829	325717	20.333	21.075

Target Compounds

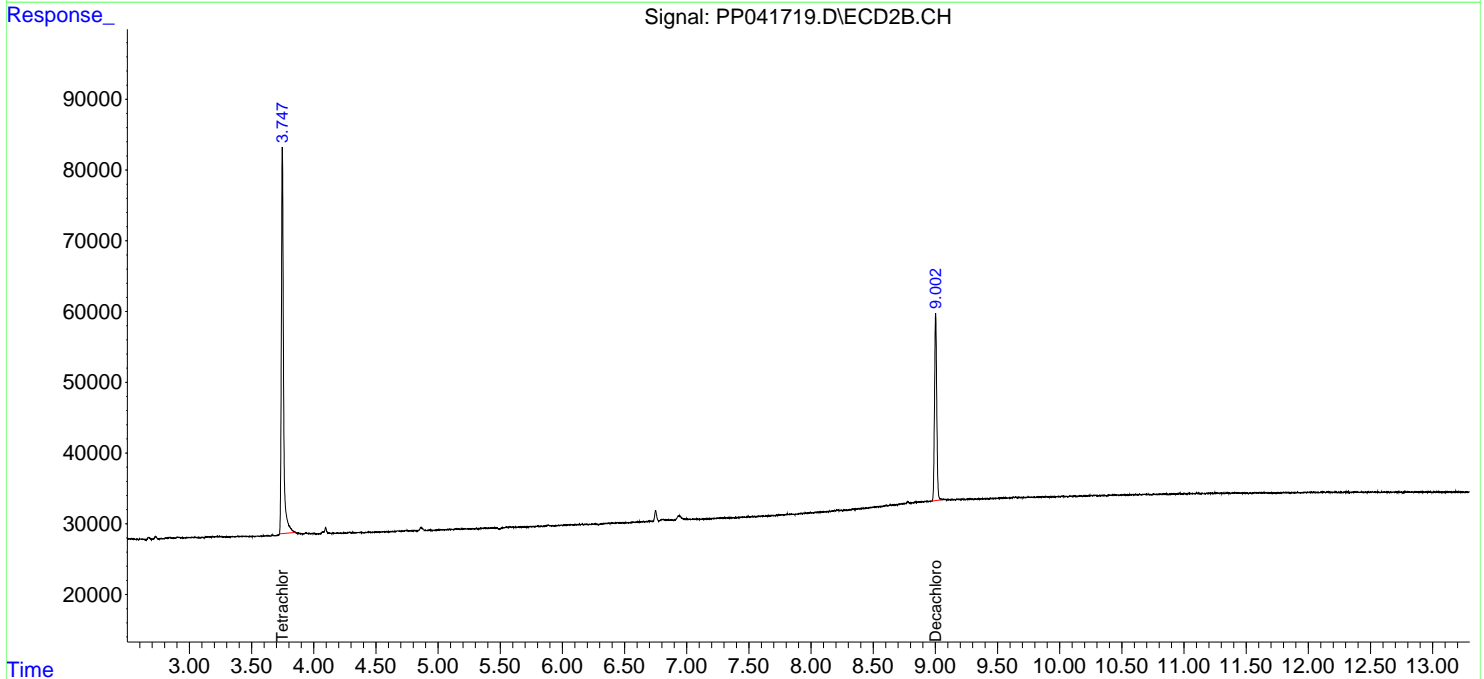
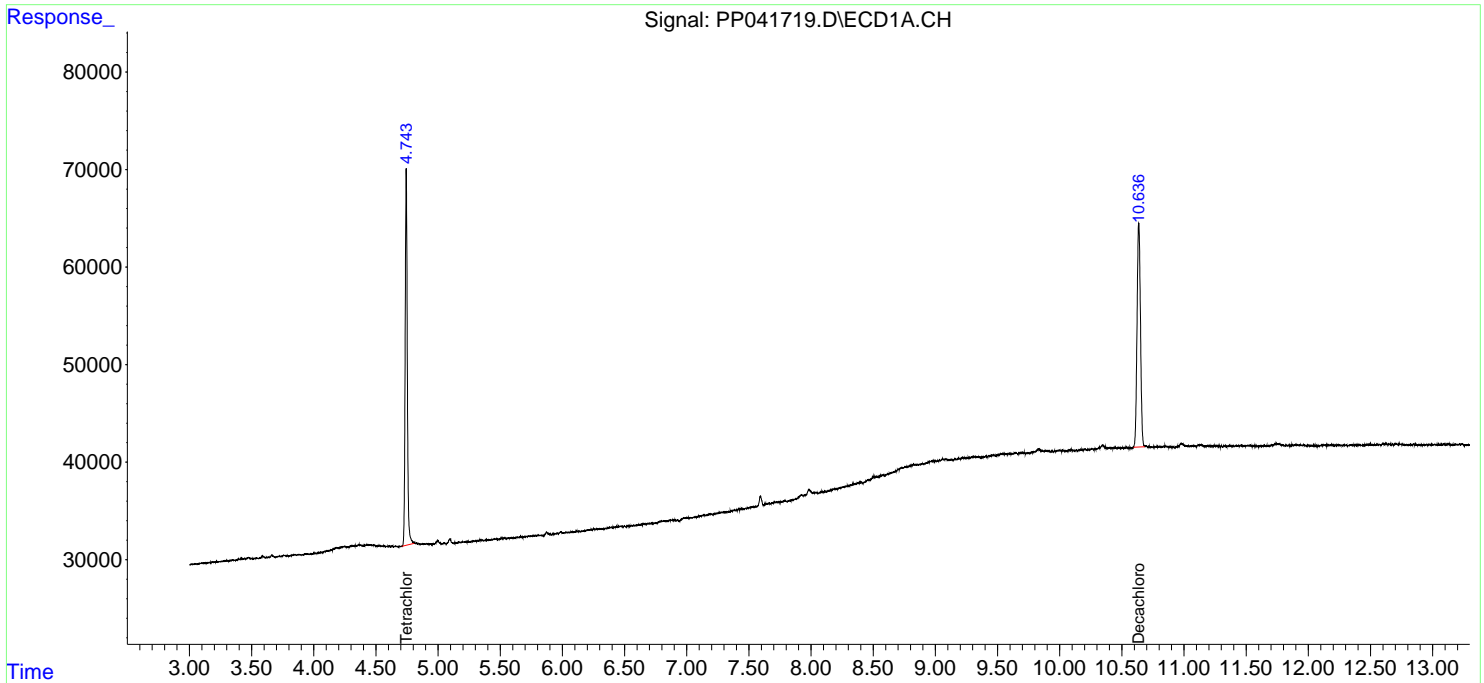
 (f)=RT Delta > 1/2 Window (#)=Amounts differ by > 25% (m)=manual int.

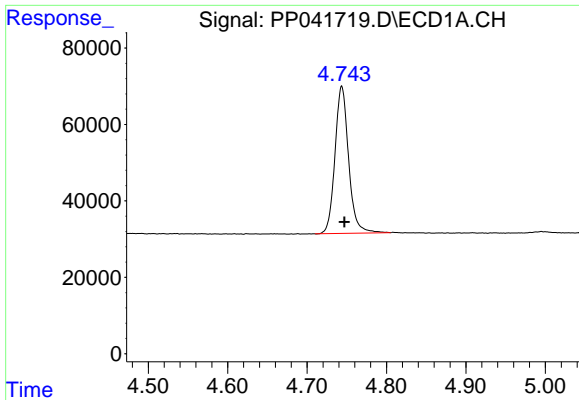
Data Path : Z:\pestpcbsrv\HPCHEM1\ECD_P\Data\PP120721\
 Data File : PP041719.D
 Signal(s) : Signal #1: ECD1A.CH Signal #2: ECD2B.CH
 Acq On : 07 Dec 2021 12:49
 Operator : AJ\MA
 Sample : PB141210BL
 Misc :
 ALS Vial : 7 Sample Multiplier: 1

Instrument :
 ECD_P
 ClientSampleId :
 PB141210BL

Integration File signal 1: autoint1.e
 Integration File signal 2: autoint2.e
 Quant Time: Dec 08 00:02:41 2021
 Quant Method : Z:\pestpcbsrv\HPCHEM1\ECD_P\methods\PP113021.M
 Quant Title : GC EXTRACTABLES
 QLast Update : Tue Nov 30 23:30:32 2021
 Response via : Initial Calibration
 Integrator: ChemStation 6890 Scale Mode: Small noise peaks clipped

Volume Inj. : 2 µl
 Signal #1 Phase : ZB-MR1 Signal #2 Phase: ZB-MR2
 Signal #1 Info : 30Mx0.32mmx 0.50µ Signal #2 Info : 30M x 0.32mm x 0.25µm

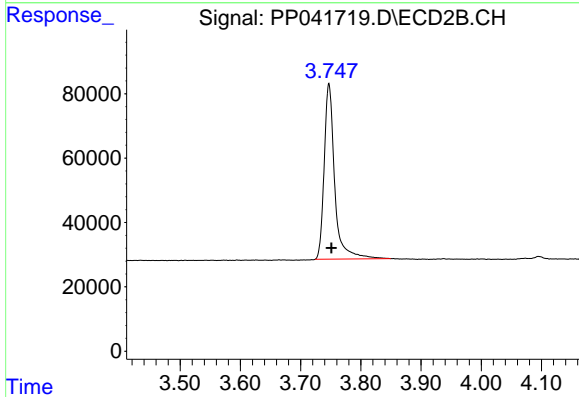




#1 Tetrachloro-m-xylene

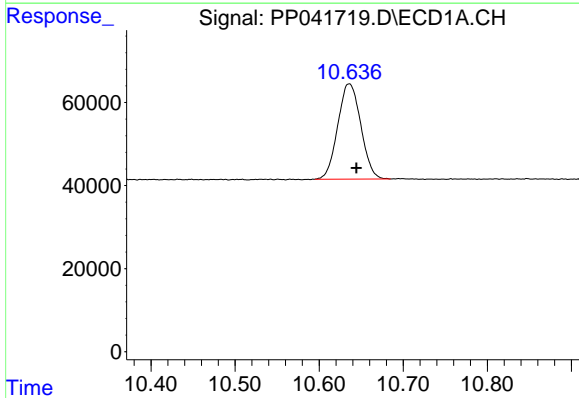
R.T.: 4.744 min
 Delta R.T.: -0.003 min
 Response: 460578
 Conc: 20.43 ng/ml

Instrument :
 ECD_P
 ClientSampleId :
 PB141210BL



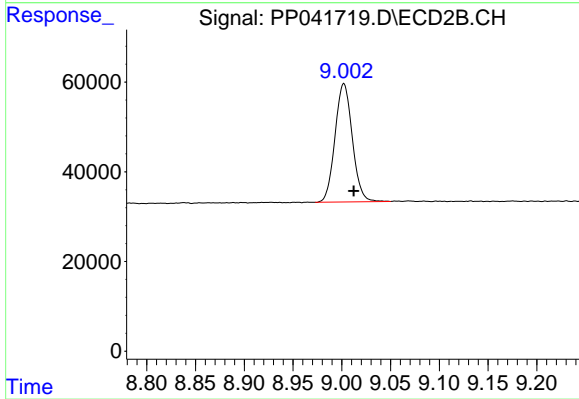
#1 Tetrachloro-m-xylene

R.T.: 3.747 min
 Delta R.T.: -0.004 min
 Response: 661368
 Conc: 21.77 ng/ml



#2 Decachlorobiphenyl

R.T.: 10.636 min
 Delta R.T.: -0.008 min
 Response: 437829
 Conc: 20.33 ng/ml



#2 Decachlorobiphenyl

R.T.: 9.002 min
 Delta R.T.: -0.010 min
 Response: 325717
 Conc: 21.07 ng/ml