

Data Path : Z:\pestpcbsrv\HPCHEM1\ECD_P\Data\PP120820\
 Data File : PP031898.D
 Signal(s) : Signal #1: ECD1A.CH Signal #2: ECD2B.CH
 Acq On : 08 Dec 2020 13:45
 Operator : DD\AJ
 Sample : L4969-01
 Misc :
 ALS Vial : 10 Sample Multiplier: 1

Instrument :
 ECD_P
ClientSampleId :
 NORTH-BRANFORD-01

Integration File signal 1: autoint1.e
 Integration File signal 2: autoint2.e
 Quant Time: Dec 09 00:57:25 2020
 Quant Method : Z:\pestpcbsrv\HPCHEM1\ECD_P\methods\PP112220.M
 Quant Title : GC EXTRACTABLES
 QLast Update : Tue Nov 24 12:23:58 2020
 Response via : Initial Calibration
 Integrator: ChemStation 6890 Scale Mode: Small noise peaks clipped

Volume Inj. : 2 µl
 Signal #1 Phase : ZB-MR1 Signal #2 Phase: ZB-MR2
 Signal #1 Info : 30Mx0.32mmx 0.50µ Signal #2 Info : 30M x 0.32mm x 0.25µm

Compound	RT#1	RT#2	Resp#1	Resp#2	ng/ml	ng/ml

System Monitoring Compounds						
1) SA Tetrachlo...	4.787	4.060	1431398	1253192	29.560	26.153
2) SA Decachlor...	10.660	9.361	967686	1010891	28.491	27.301
Target Compounds						
9) L2 AR-1221-2	0.000	4.412	0	17564	N.D.	45.531 #
35) L7 AR-1260-5	0.000	7.973	0	12207	N.D.	2.690 #
37) L8 AR-1262-2	0.000	7.973	0	12207	N.D.	2.513 #
38) L8 AR-1262-3	0.000	8.273	0	10029	N.D.	5.099 #
39) L8 AR-1262-4	0.000	8.337	0	5654	N.D.	1.560 #
40) L8 AR-1262-5	0.000	8.812f	0	540	N.D.	0.332 #
41) L9 AR-1268-1	0.000	8.273	0	10029	N.D.	1.813 #
42) L9 AR-1268-2	0.000	8.337	0	5654	N.D.	1.046 #
44) L9 AR-1268-4	0.000	8.812f	0	540	N.D.	0.296 #
45) L9 AR-1268-5	0.000	9.119	0	6754	N.D.	0.488 #

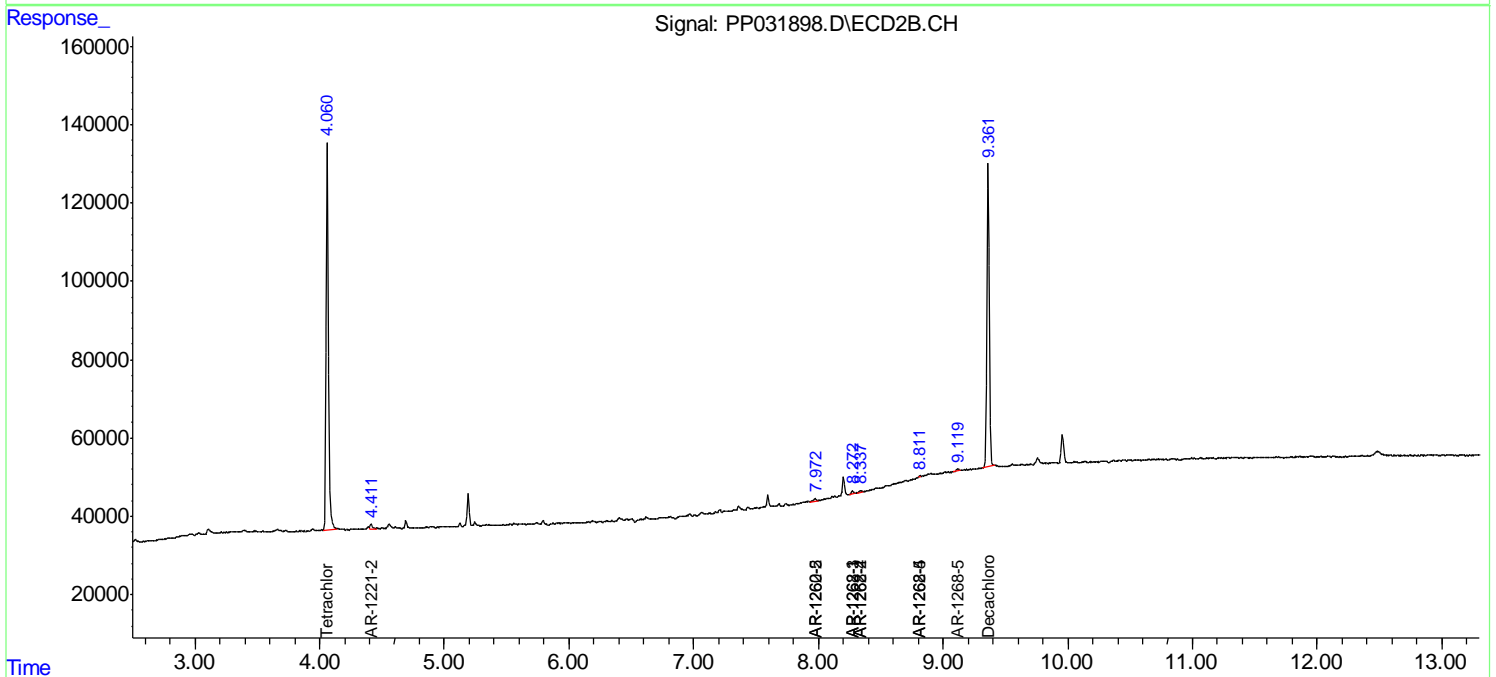
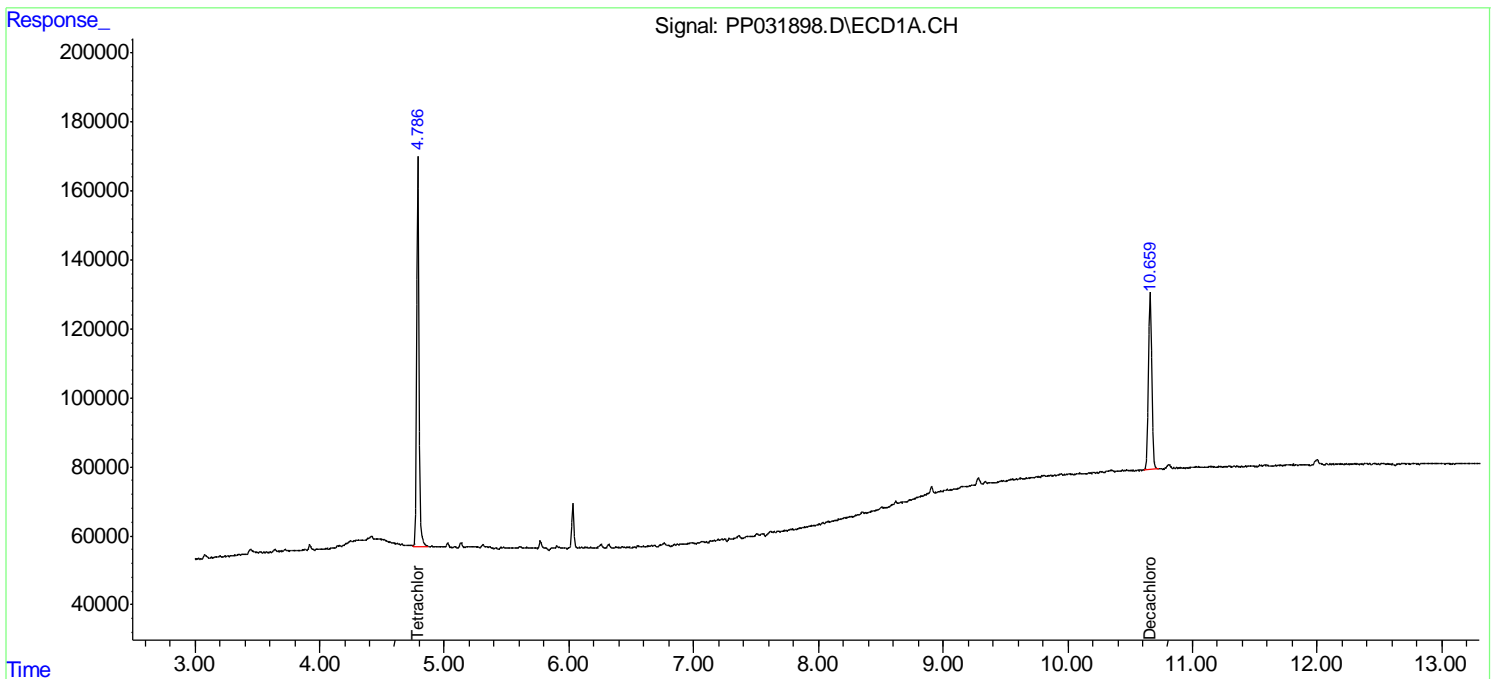
(f)=RT Delta > 1/2 Window (#)=Amounts differ by > 25% (m)=manual int.

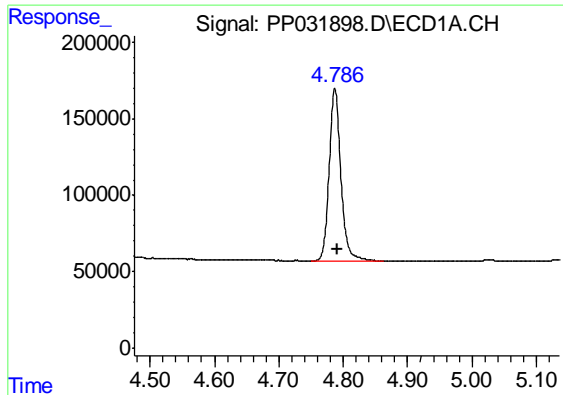
Data Path : Z:\pestpcbsrv\HPCHEM1\ECD_P\Data\PP120820\
 Data File : PP031898.D
 Signal(s) : Signal #1: ECD1A.CH Signal #2: ECD2B.CH
 Acq On : 08 Dec 2020 13:45
 Operator : DD\AJ
 Sample : L4969-01
 Misc :
 ALS Vial : 10 Sample Multiplier: 1

Instrument :
 ECD_P
ClientSampled :
 NORTH-BRANFORD-01

Integration File signal 1: autoint1.e
 Integration File signal 2: autoint2.e
 Quant Time: Dec 09 00:57:25 2020
 Quant Method : Z:\pestpcbsrv\HPCHEM1\ECD_P\methods\PP112220.M
 Quant Title : GC EXTRACTABLES
 QLast Update : Tue Nov 24 12:23:58 2020
 Response via : Initial Calibration
 Integrator: ChemStation 6890 Scale Mode: Small noise peaks clipped

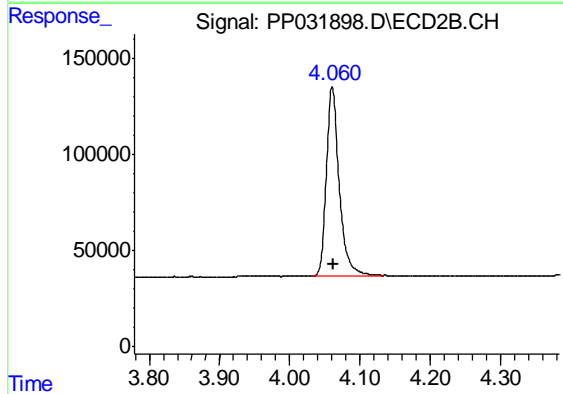
Volume Inj. : 2 µl
 Signal #1 Phase : ZB-MR1 Signal #2 Phase: ZB-MR2
 Signal #1 Info : 30Mx0.32mmx 0.50µ Signal #2 Info : 30M x 0.32mm x 0.25µm



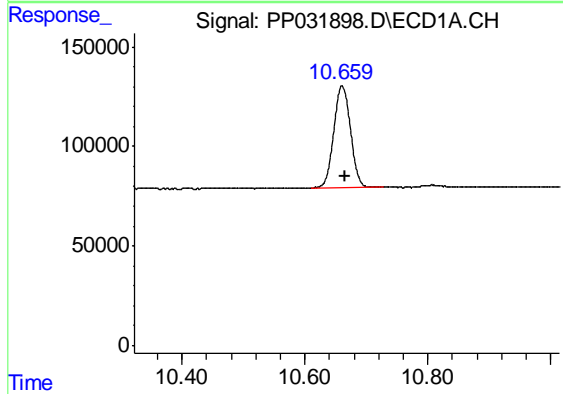


#1 Tetrachloro-m-xylene
 R.T.: 4.787 min
 Delta R.T.: -0.003 min
 Response: 1431398
 Conc: 29.56 ng/ml

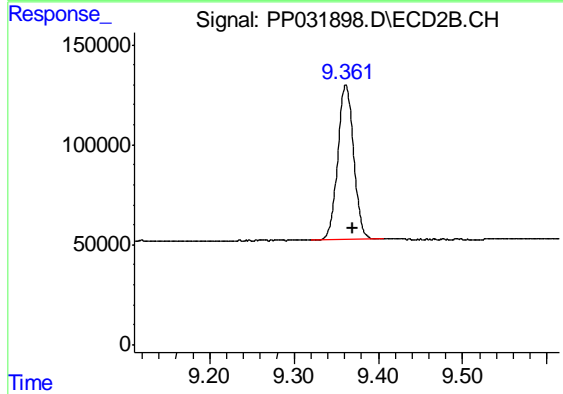
Instrument :
 ECD_P
 ClientSampleId :
 NORTH-BRANFORD-01



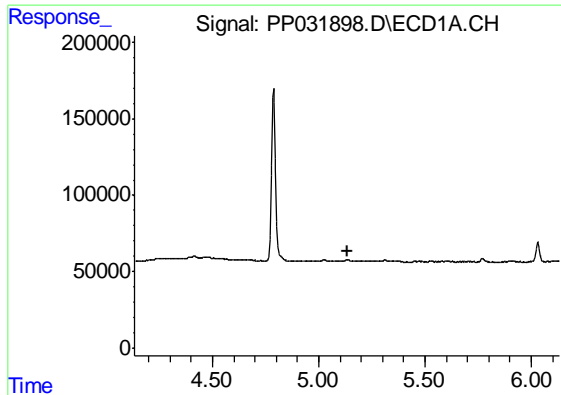
#1 Tetrachloro-m-xylene
 R.T.: 4.060 min
 Delta R.T.: -0.001 min
 Response: 1253192
 Conc: 26.15 ng/ml



#2 Decachlorobiphenyl
 R.T.: 10.660 min
 Delta R.T.: -0.005 min
 Response: 967686
 Conc: 28.49 ng/ml



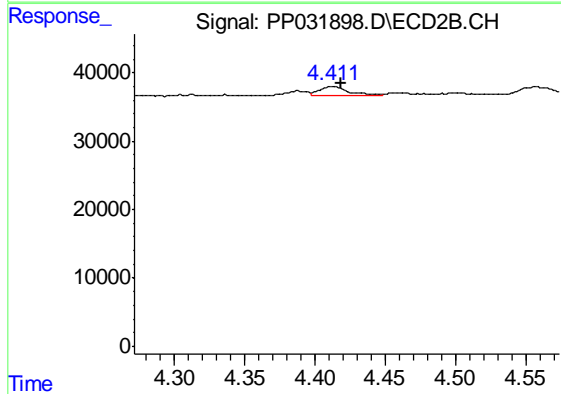
#2 Decachlorobiphenyl
 R.T.: 9.361 min
 Delta R.T.: -0.009 min
 Response: 1010891
 Conc: 27.30 ng/ml



#9 AR-1221-2

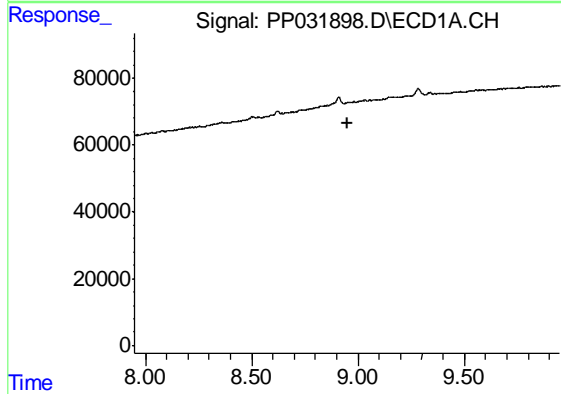
R.T.: 0.000 min
 Exp R.T. : 5.133 min
 Response: 0
 Conc: N.D.

Instrument :
 ECD_P
 ClientSampleId :
 NORTH-BRANFORD-01



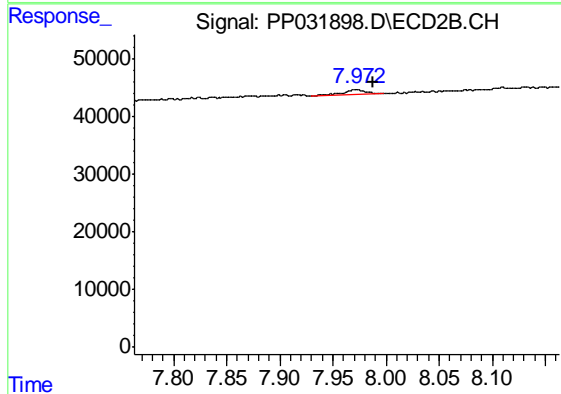
#9 AR-1221-2

R.T.: 4.412 min
 Delta R.T.: -0.007 min
 Response: 17564
 Conc: 45.53 ng/ml



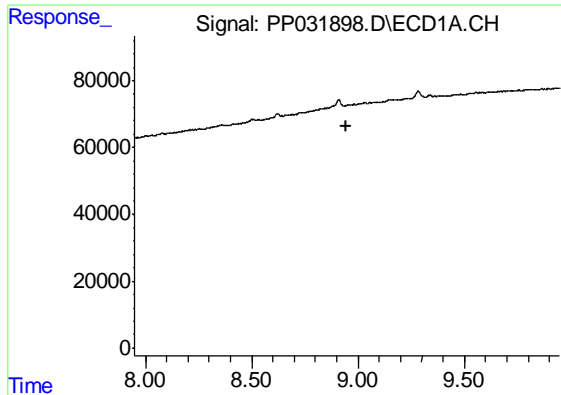
#35 AR-1260-5

R.T.: 0.000 min
 Exp R.T. : 8.948 min
 Response: 0
 Conc: N.D.



#35 AR-1260-5

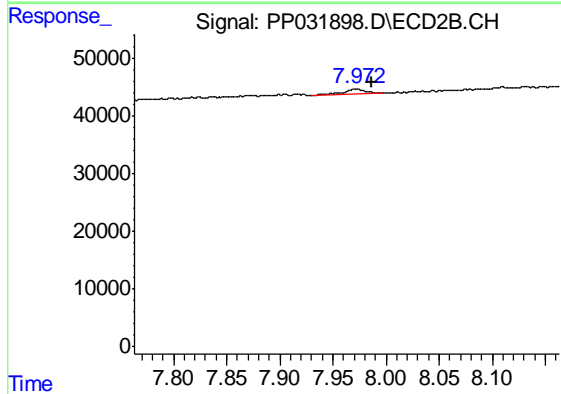
R.T.: 7.973 min
 Delta R.T.: -0.015 min
 Response: 12207
 Conc: 2.69 ng/ml



#37 AR-1262-2

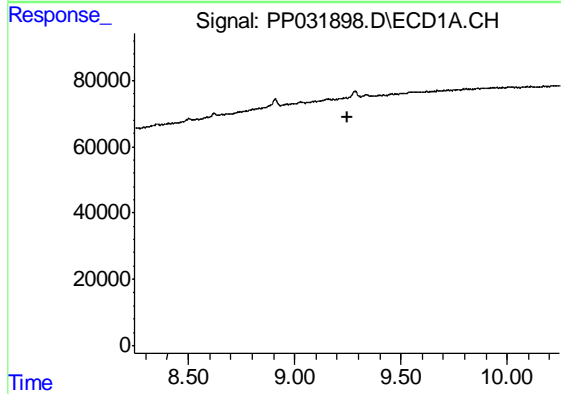
R.T.: 0.000 min
 Exp R.T. : 8.948 min
 Response: 0
 Conc: N.D.

Instrument :
 ECD_P
 ClientSampleId :
 NORTH-BRANFORD-01



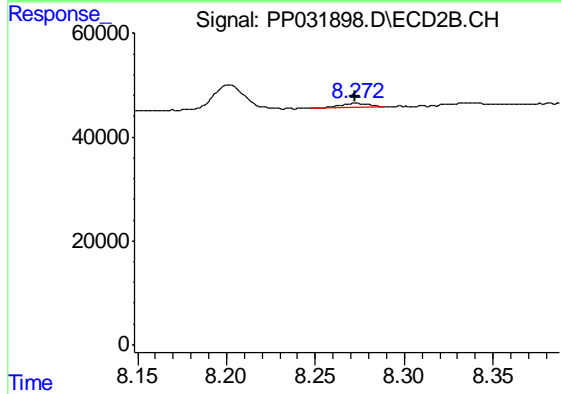
#37 AR-1262-2

R.T.: 7.973 min
 Delta R.T.: -0.013 min
 Response: 12207
 Conc: 2.51 ng/ml



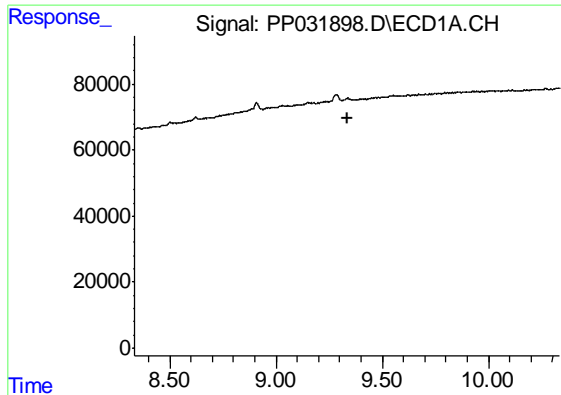
#38 AR-1262-3

R.T.: 0.000 min
 Exp R.T. : 9.246 min
 Response: 0
 Conc: N.D.



#38 AR-1262-3

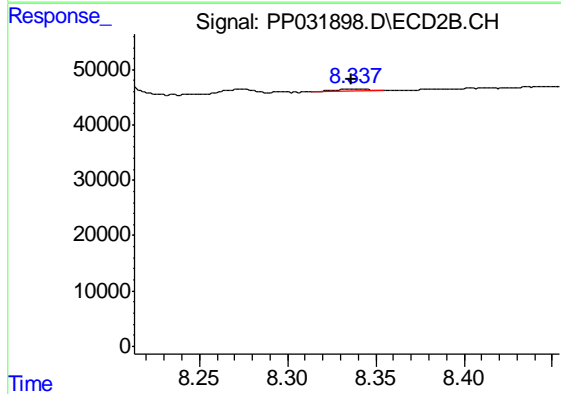
R.T.: 8.273 min
 Delta R.T.: 0.000 min
 Response: 10029
 Conc: 5.10 ng/ml



#39 AR-1262-4

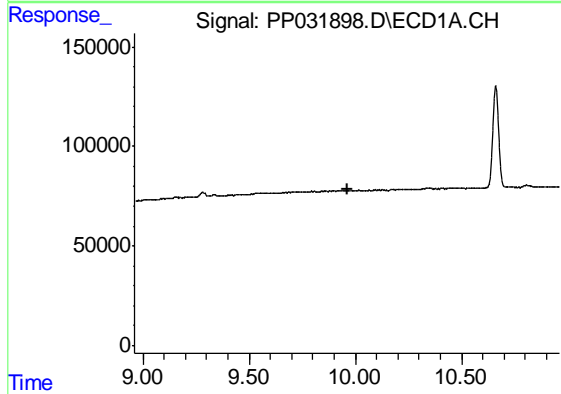
R.T.: 0.000 min
 Exp R.T. : 9.334 min
 Response: 0
 Conc: N.D.

Instrument :
 ECD_P
 ClientSampleId :
 NORTH-BRANFORD-01



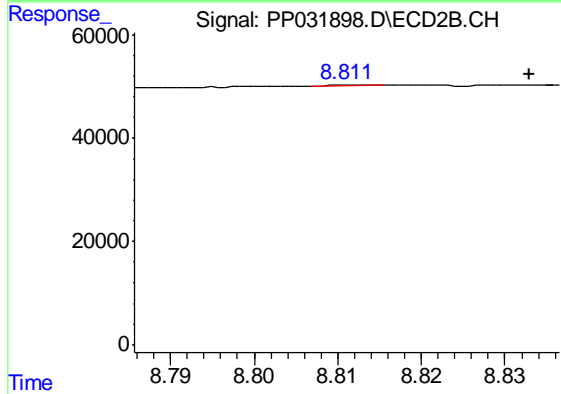
#39 AR-1262-4

R.T.: 8.337 min
 Delta R.T.: 0.000 min
 Response: 5654
 Conc: 1.56 ng/ml



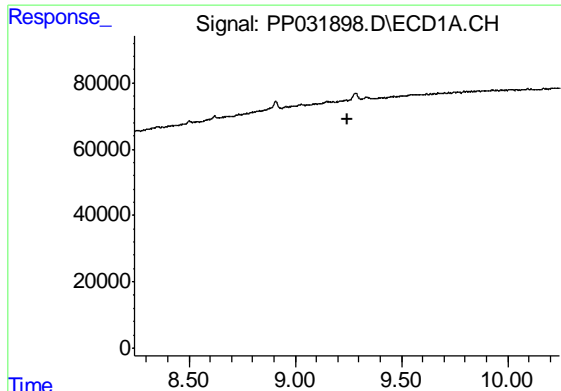
#40 AR-1262-5

R.T.: 0.000 min
 Exp R.T. : 9.961 min
 Response: 0
 Conc: N.D.



#40 AR-1262-5

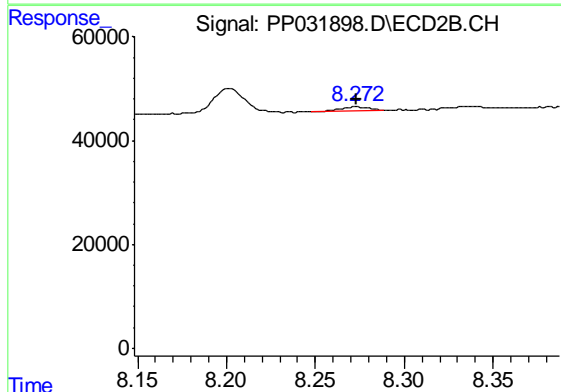
R.T.: 8.812 min
 Delta R.T.: -0.021 min
 Response: 540
 Conc: 0.33 ng/ml



#41 AR-1268-1

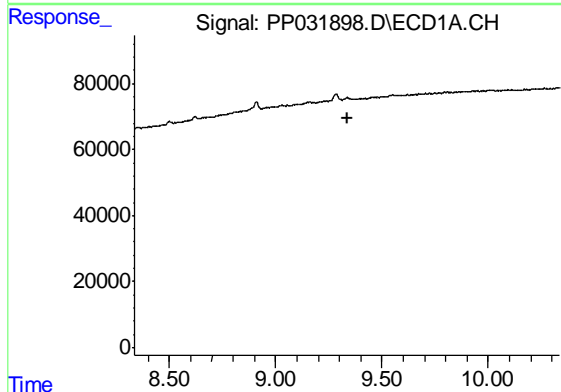
R.T.: 0.000 min
 Exp R.T. : 9.244 min
 Response: 0
 Conc: N.D.

Instrument :
 ECD_P
 ClientSampleId :
 NORTH-BRANFORD-01



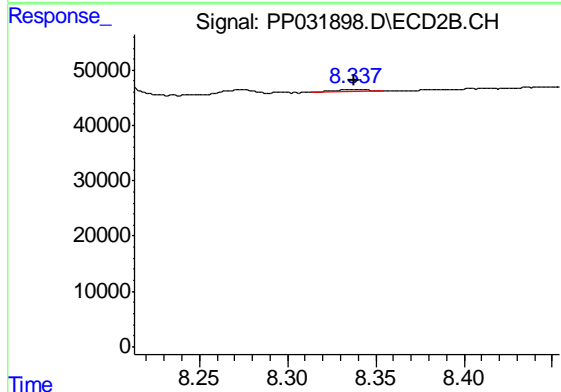
#41 AR-1268-1

R.T.: 8.273 min
 Delta R.T.: 0.000 min
 Response: 10029
 Conc: 1.81 ng/ml



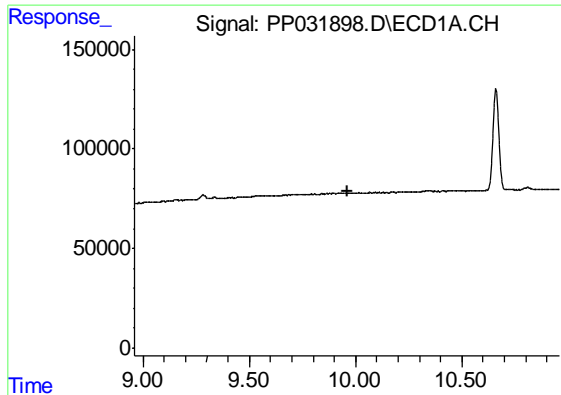
#42 AR-1268-2

R.T.: 0.000 min
 Exp R.T. : 9.336 min
 Response: 0
 Conc: N.D.



#42 AR-1268-2

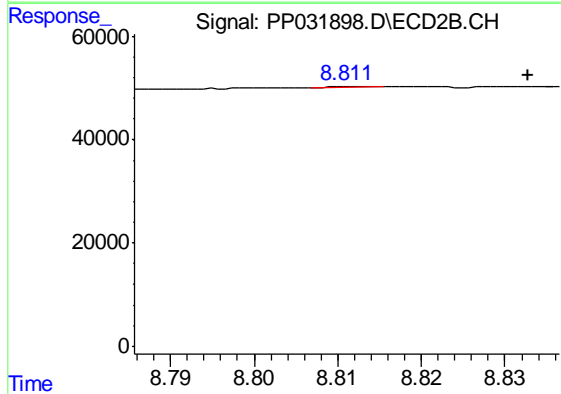
R.T.: 8.337 min
 Delta R.T.: 0.000 min
 Response: 5654
 Conc: 1.05 ng/ml



#44 AR-1268-4

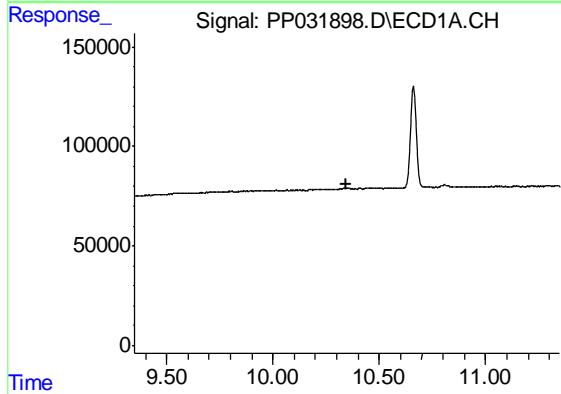
R.T.: 0.000 min
 Exp R.T. : 9.960 min
 Response: 0
 Conc: N.D.

Instrument :
 ECD_P
 ClientSampleId :
 NORTH-BRANFORD-01



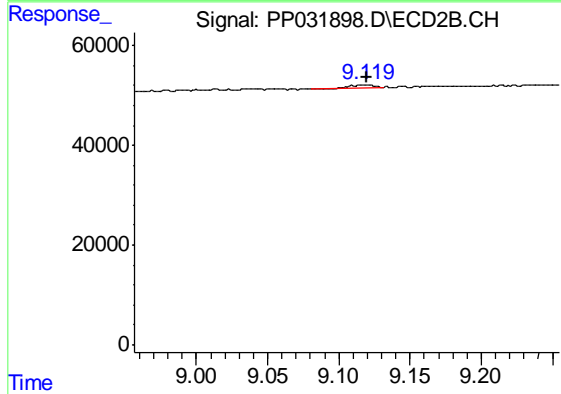
#44 AR-1268-4

R.T.: 8.812 min
 Delta R.T.: -0.021 min
 Response: 540
 Conc: 0.30 ng/ml



#45 AR-1268-5

R.T.: 0.000 min
 Exp R.T. : 10.347 min
 Response: 0
 Conc: N.D.



#45 AR-1268-5

R.T.: 9.119 min
 Delta R.T.: 0.000 min
 Response: 6754
 Conc: 0.49 ng/ml