

Data Path : Z:\pestpcbsrv\HPCHEM1\ECD_P\Data\PP120820\
 Data File : PP031902.D
 Signal(s) : Signal #1: ECD1A.CH Signal #2: ECD2B.CH
 Acq On : 08 Dec 2020 15:02
 Operator : DD\AJ
 Sample : L4965-01MS
 Misc :
 ALS Vial : 14 Sample Multiplier: 1

Instrument :
 ECD_P
 ClientSampleId :
 CRT012MS

Manual Integrations
 APPROVED

Ankita
 12/9/2020 10:06:51 AM

Integration File signal 1: autoint1.e
 Integration File signal 2: autoint2.e
 Quant Time: Dec 09 00:59:08 2020
 Quant Method : Z:\pestpcbsrv\HPCHEM1\ECD_P\methods\PP112220.M
 Quant Title : GC EXTRACTABLES
 QLast Update : Tue Nov 24 12:23:58 2020
 Response via : Initial Calibration
 Integrator: ChemStation 6890 Scale Mode: Small noise peaks clipped

Volume Inj. : 2 µl
 Signal #1 Phase : ZB-MR1 Signal #2 Phase: ZB-MR2
 Signal #1 Info : 30Mx0.32mmx 0.50µ Signal #2 Info : 30M x 0.32mm x 0.25µm

Compound	RT#1	RT#2	Resp#1	Resp#2	ng/ml	ng/ml

System Monitoring Compounds						
1) SA Tetrachlo...	4.787	4.060	1254084	1104126	25.898	23.042
2) SA Decachlor...	10.661	9.361	733102	772451	21.585	20.862
Target Compounds						
3) L1 AR-1016-1	6.092	5.313	767867	735955	506.576	498.029
4) L1 AR-1016-2	6.115	5.334	1142524	987889	505.982	454.347
5) L1 AR-1016-3	6.181	5.526	696282	557092	503.991	476.652
6) L1 AR-1016-4	6.286	5.577	614748	400955	529.035	459.342
7) L1 AR-1016-5	6.600	5.806	523108	479823	474.580	421.859
31) L7 AR-1260-1	7.772	6.900	1108330	954828	633.316m	483.191
32) L7 AR-1260-2	8.037	7.097	1116742	1197615	543.495	491.785
33) L7 AR-1260-3	8.404	7.252	736876	1091549	451.785	477.987
34) L7 AR-1260-4	8.632	7.734	853466	795649	463.501	418.736
35) L7 AR-1260-5	8.947	7.982	1640674	1962779	444.963	432.526

(f)=RT Delta > 1/2 Window (#)=Amounts differ by > 25% (m)=manual int.

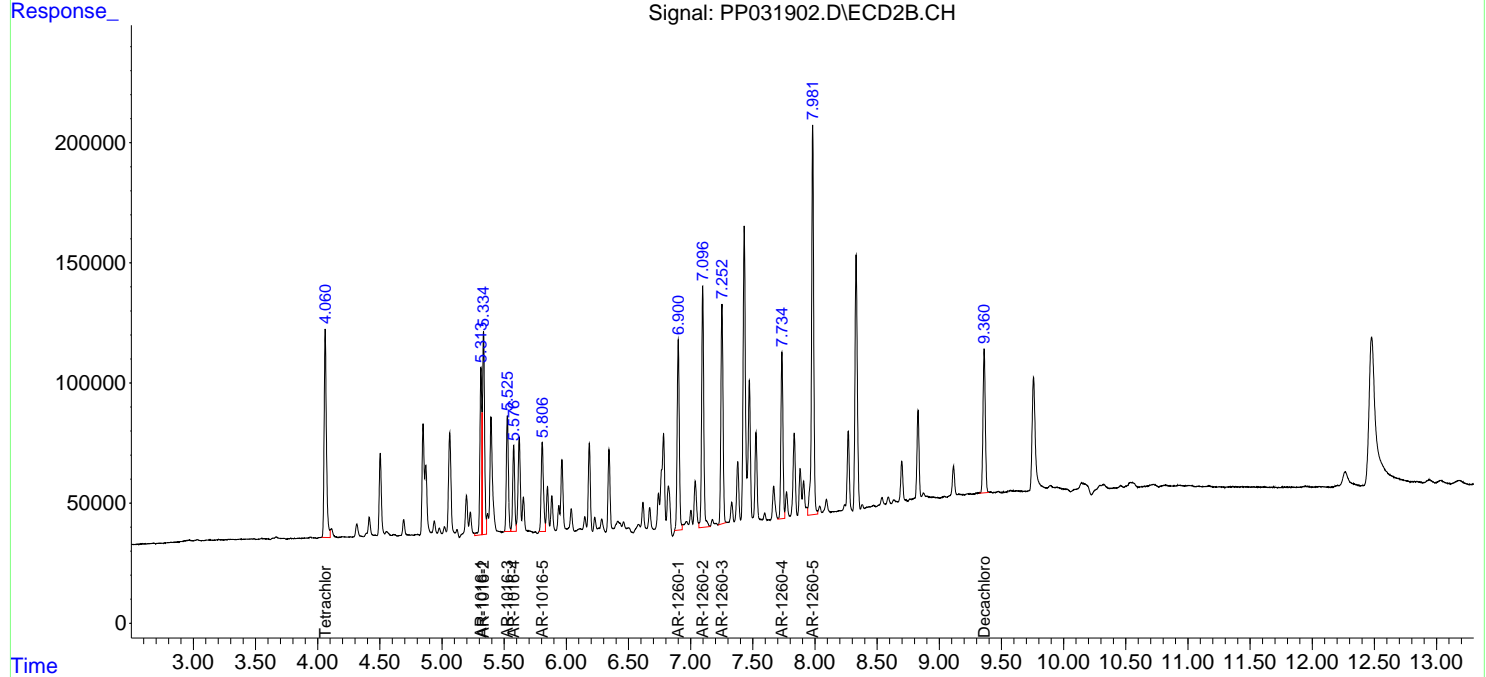
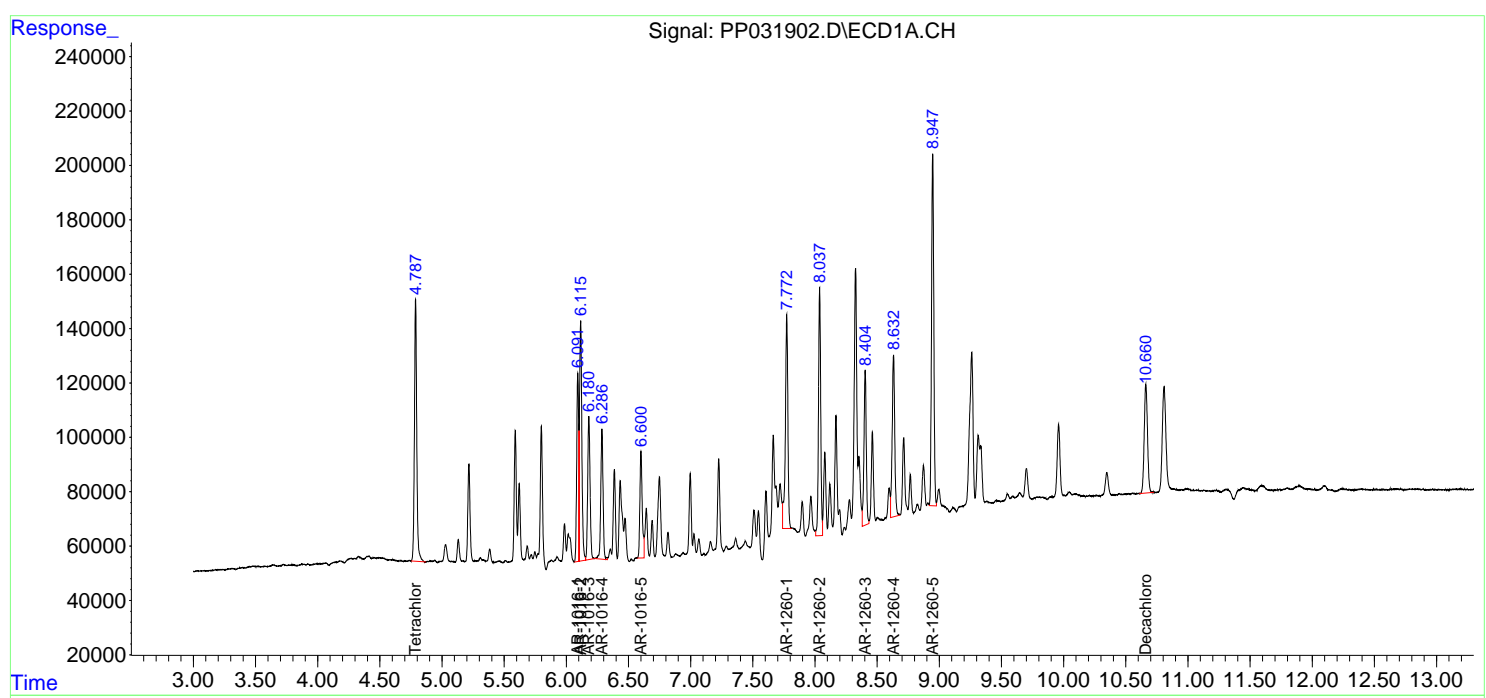
Data Path : Z:\pestpcbsrv\HPCHEM1\ECD_P\Data\PP120820\
 Data File : PP031902.D
 Signal(s) : Signal #1: ECD1A.CH Signal #2: ECD2B.CH
 Acq On : 08 Dec 2020 15:02
 Operator : DD\AJ
 Sample : L4965-01MS
 Misc :
 ALS Vial : 14 Sample Multiplier: 1

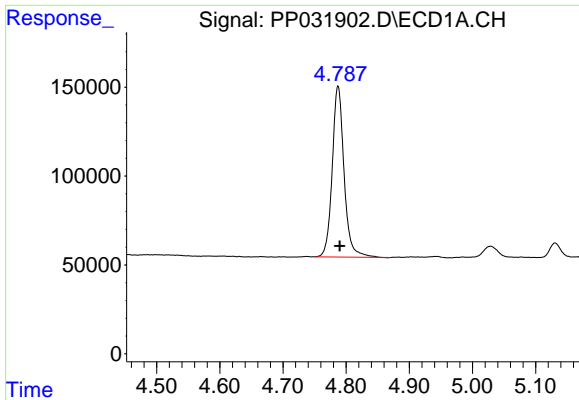
Instrument :
 ECD_P
 ClientSampled :
 CRT012MS

Manual Integrations
APPROVED
 Ankita
 12/9/2020 10:06:51 AM

Integration File signal 1: autoint1.e
 Integration File signal 2: autoint2.e
 Quant Time: Dec 09 00:59:08 2020
 Quant Method : Z:\pestpcbsrv\HPCHEM1\ECD_P\methods\PP112220.M
 Quant Title : GC EXTRACTABLES
 QLast Update : Tue Nov 24 12:23:58 2020
 Response via : Initial Calibration
 Integrator: ChemStation 6890 Scale Mode: Small noise peaks clipped

Volume Inj. : 2 µl
 Signal #1 Phase : ZB-MR1 Signal #2 Phase: ZB-MR2
 Signal #1 Info : 30Mx0.32mmx 0.50µ Signal #2 Info : 30M x 0.32mm x 0.25µm

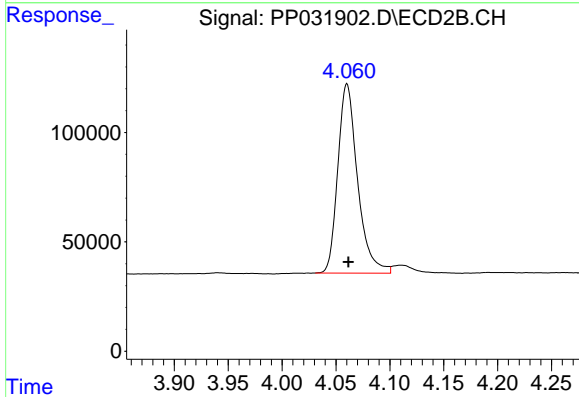




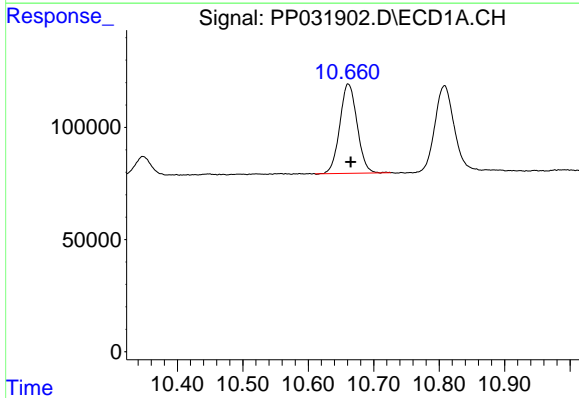
#1 Tetrachloro-m-xylene
 R.T.: 4.787 min
 Delta R.T.: -0.003 min
 Response: 1254084
 Conc: 25.90 ng/ml

Instrument :
 ECD_P
 ClientSampled :
 CRT012MS

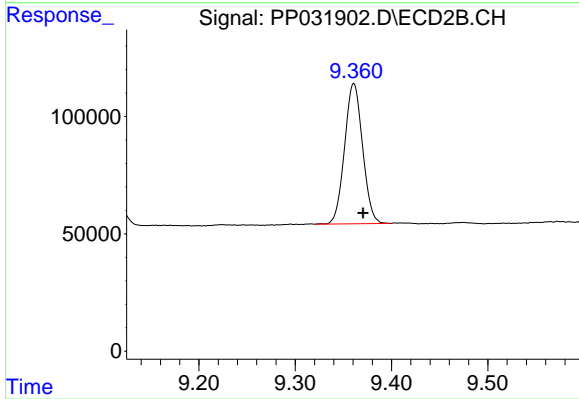
Manual Integrations
 APPROVED
 Ankita
 12/9/2020 10:06:51 AM



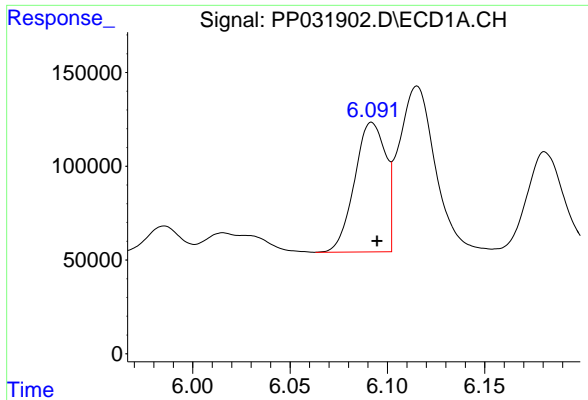
#1 Tetrachloro-m-xylene
 R.T.: 4.060 min
 Delta R.T.: -0.001 min
 Response: 1104126
 Conc: 23.04 ng/ml



#2 Decachlorobiphenyl
 R.T.: 10.661 min
 Delta R.T.: -0.004 min
 Response: 733102
 Conc: 21.58 ng/ml



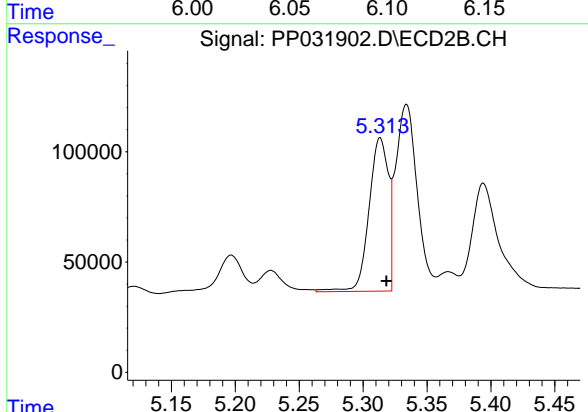
#2 Decachlorobiphenyl
 R.T.: 9.361 min
 Delta R.T.: -0.010 min
 Response: 772451
 Conc: 20.86 ng/ml



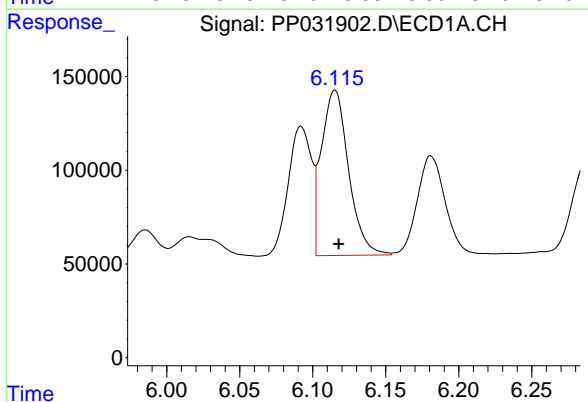
#3 AR-1016-1
 R.T.: 6.092 min
 Delta R.T.: -0.003 min
 Response: 767867
 Conc: 506.58 ng/ml

Instrument :
 ECD_P
ClientSampled :
 CRT012MS

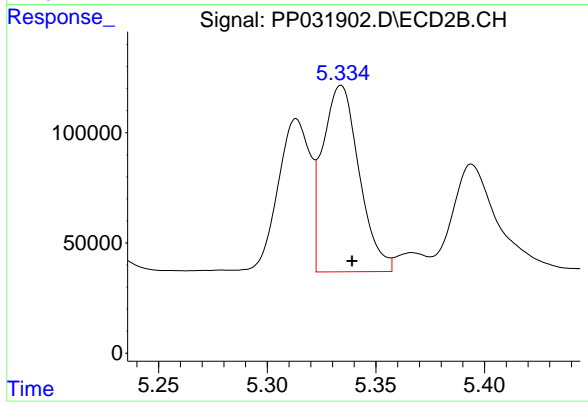
Manual Integrations
APPROVED
 Ankita
 12/9/2020 10:06:51 AM



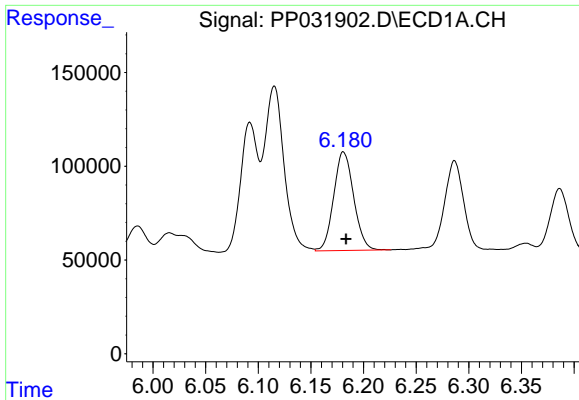
#3 AR-1016-1
 R.T.: 5.313 min
 Delta R.T.: -0.005 min
 Response: 735955
 Conc: 498.03 ng/ml



#4 AR-1016-2
 R.T.: 6.115 min
 Delta R.T.: -0.003 min
 Response: 1142524
 Conc: 505.98 ng/ml



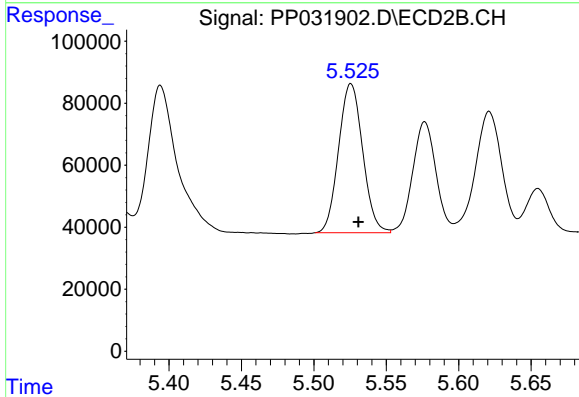
#4 AR-1016-2
 R.T.: 5.334 min
 Delta R.T.: -0.005 min
 Response: 987889
 Conc: 454.35 ng/ml



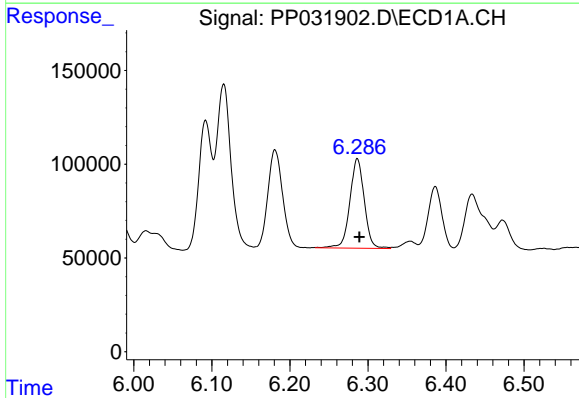
#5 AR-1016-3
 R.T.: 6.181 min
 Delta R.T.: -0.003 min
 Response: 696282
 Conc: 503.99 ng/ml

Instrument :
 ECD_P
ClientSampled :
 CRT012MS

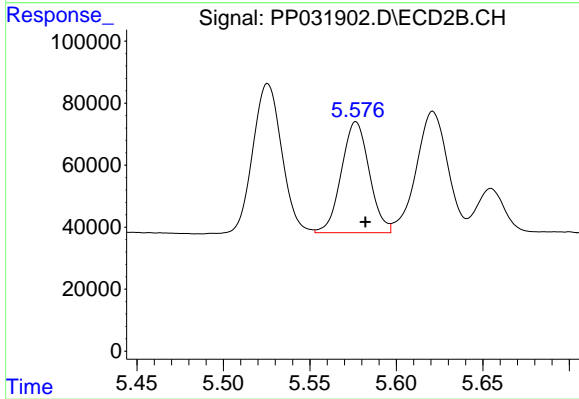
Manual Integrations
APPROVED
 Ankita
 12/9/2020 10:06:51 AM



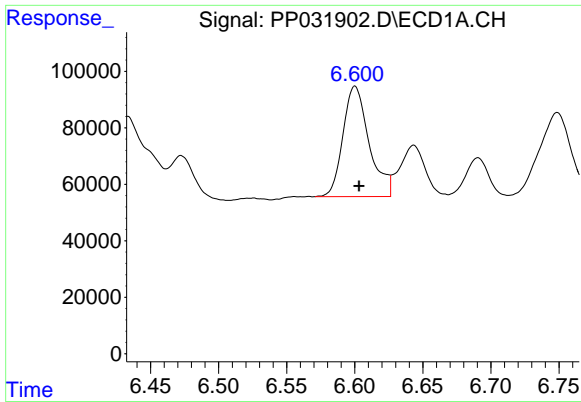
#5 AR-1016-3
 R.T.: 5.526 min
 Delta R.T.: -0.005 min
 Response: 557092
 Conc: 476.65 ng/ml



#6 AR-1016-4
 R.T.: 6.286 min
 Delta R.T.: -0.003 min
 Response: 614748
 Conc: 529.04 ng/ml



#6 AR-1016-4
 R.T.: 5.577 min
 Delta R.T.: -0.005 min
 Response: 400955
 Conc: 459.34 ng/ml

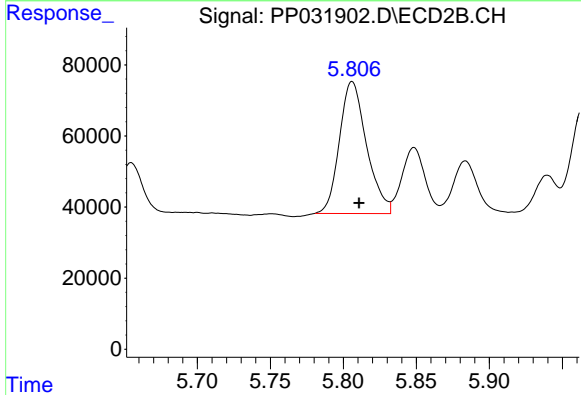


#7 AR-1016-5

R.T.: 6.600 min
 Delta R.T.: -0.003 min
 Response: 523108
 Conc: 474.58 ng/ml

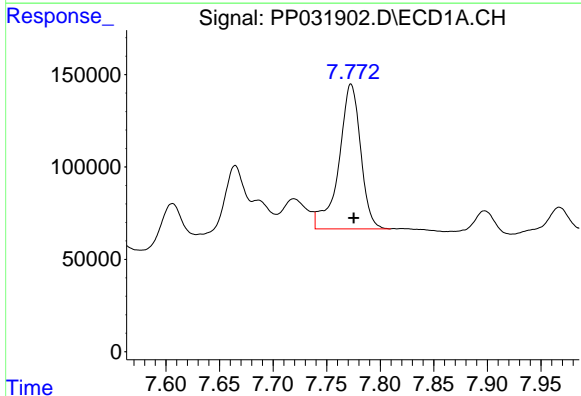
Instrument :
 ECD_P
ClientSampled :
 CRT012MS

Manual Integrations
APPROVED
 Ankita
 12/9/2020 10:06:51 AM



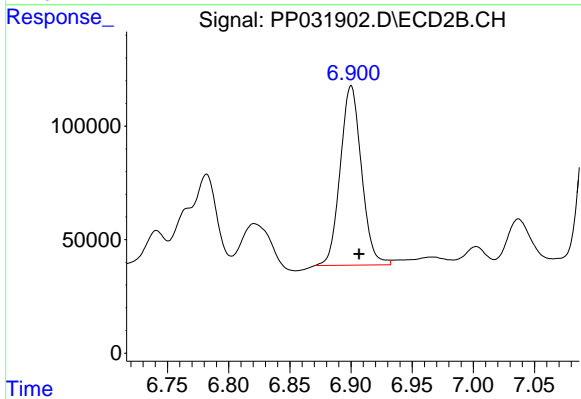
#7 AR-1016-5

R.T.: 5.806 min
 Delta R.T.: -0.005 min
 Response: 479823
 Conc: 421.86 ng/ml



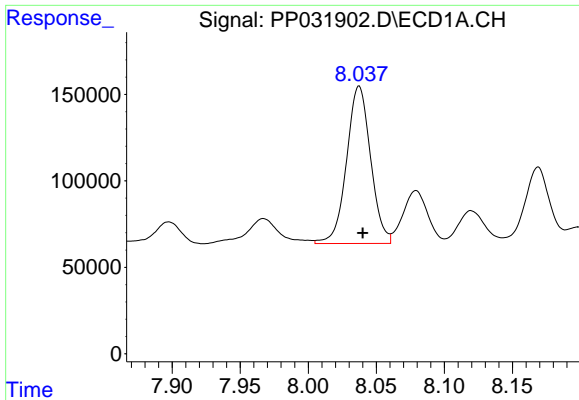
#31 AR-1260-1

R.T.: 7.772 min
 Delta R.T.: -0.003 min
 Response: 1108330
 Conc: 633.32 ng/ml m



#31 AR-1260-1

R.T.: 6.900 min
 Delta R.T.: -0.006 min
 Response: 954828
 Conc: 483.19 ng/ml



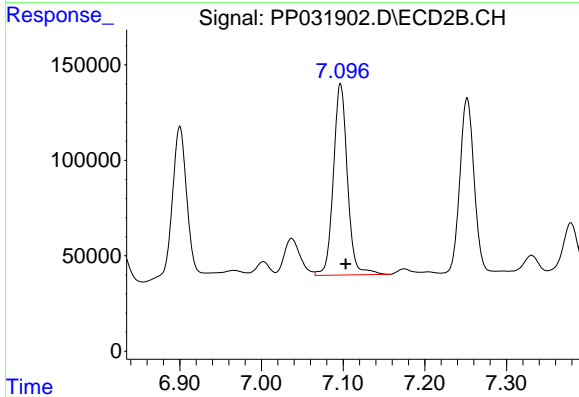
#32 AR-1260-2

R.T.: 8.037 min
 Delta R.T.: -0.003 min
 Response: 1116742
 Conc: 543.50 ng/ml

Instrument :
 ECD_P
 ClientSampled :
 CRT012MS

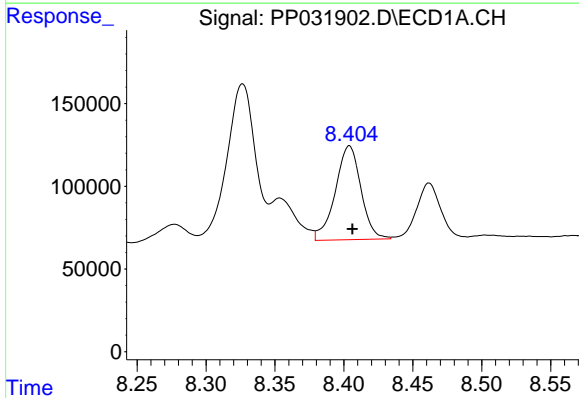
Manual Integrations
 APPROVED

Ankita
 12/9/2020 10:06:51 AM



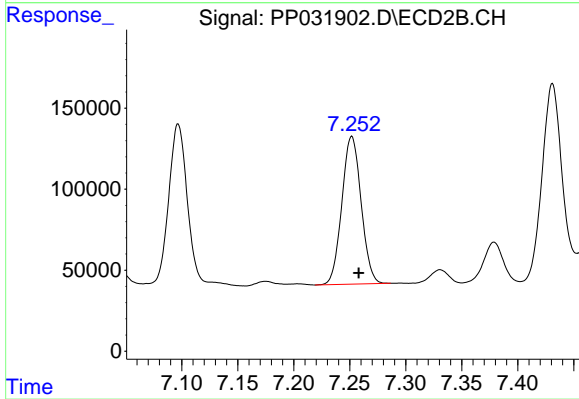
#32 AR-1260-2

R.T.: 7.097 min
 Delta R.T.: -0.006 min
 Response: 1197615
 Conc: 491.78 ng/ml



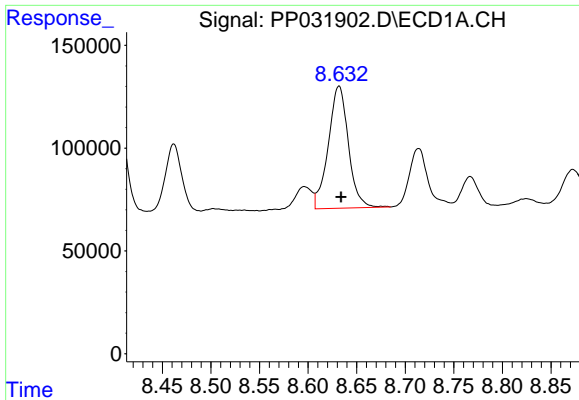
#33 AR-1260-3

R.T.: 8.404 min
 Delta R.T.: -0.002 min
 Response: 736876
 Conc: 451.78 ng/ml



#33 AR-1260-3

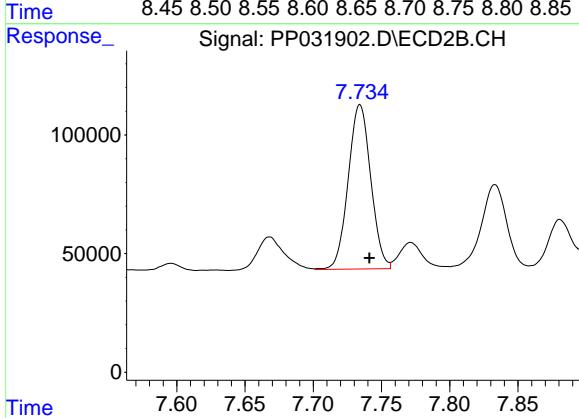
R.T.: 7.252 min
 Delta R.T.: -0.006 min
 Response: 1091549
 Conc: 477.99 ng/ml



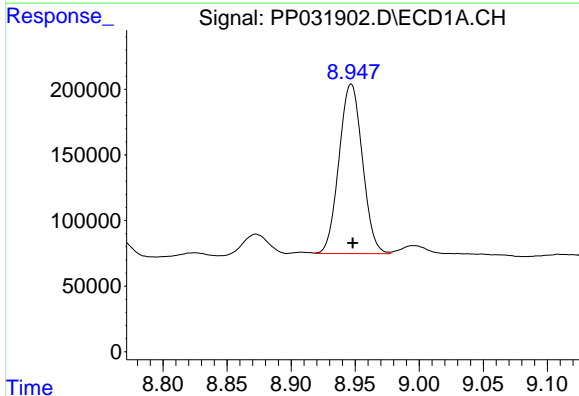
#34 AR-1260-4
 R.T.: 8.632 min
 Delta R.T.: -0.002 min
 Response: 853466
 Conc: 463.50 ng/ml

Instrument :
 ECD_P
ClientSampled :
 CRT012MS

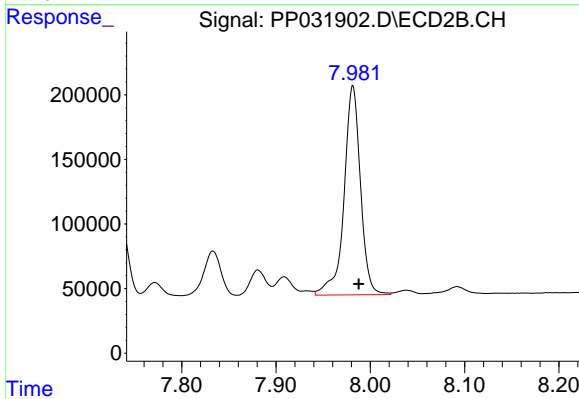
Manual Integrations
APPROVED
 Ankita
 12/9/2020 10:06:51 AM



#34 AR-1260-4
 R.T.: 7.734 min
 Delta R.T.: -0.007 min
 Response: 795649
 Conc: 418.74 ng/ml



#35 AR-1260-5
 R.T.: 8.947 min
 Delta R.T.: -0.001 min
 Response: 1640674
 Conc: 444.96 ng/ml



#35 AR-1260-5
 R.T.: 7.982 min
 Delta R.T.: -0.006 min
 Response: 1962779
 Conc: 432.53 ng/ml