

Data Path : Z:\pestpcbsrv\HPCHEM1\ECD_P\Data\PP120822\
 Data File : PP053659.D
 Signal(s) : Signal #1: ECD1A.ch Signal #2: ECD2B.ch
 Acq On : 08 Dec 2022 16:35
 Operator : YP\AJ
 Sample : AR1268ICC250
 Misc :
 ALS Vial : 29 Sample Multiplier: 1

Instrument :
 ECD_P
ClientSampleId :
 AR1268ICC250

Integration File signal 1: autoint1.e
 Integration File signal 2: autoint2.e
 Quant Time: Dec 08 16:54:37 2022
 Quant Method : Z:\pestpcbsrv\HPCHEM1\ECD_P\methods\PP120822.M
 Quant Title : GC EXTRACTABLES
 QLast Update : Thu Dec 08 16:47:34 2022
 Response via : Initial Calibration
 Integrator: ChemStation

Volume Inj. : 2 µl
 Signal #1 Phase : ZB-MR2 Signal #2 Phase: ZB-MR2
 Signal #1 Info : 30Mx0.32mmx 0.50µ Signal #2 Info : 30M x 0.32mm x 0.25µm

Compound	RT#1	RT#2	Resp#1	Resp#2	ng/ml	ng/ml

System Monitoring Compounds						
1) SA Tetrachlo...	4.341	3.597	48504930	42317036	25.016	24.696
2) SA Decachlor...	10.102	8.643	58574764	53568345	24.991	25.353
Target Compounds						
41) L9 AR-1268-1	8.595	7.532	50527794	39752287	251.508	250.409
42) L9 AR-1268-2	8.690	7.596	47681954	39358121	251.817	249.085
43) L9 AR-1268-3	8.918	7.805	39726917	33971749	249.676	251.182
44) L9 AR-1268-4	9.346	8.092	13748777	11614804	248.501	251.127
45) L9 AR-1268-5	9.762	8.385	115.8E6	103.6E6	240.537	244.441

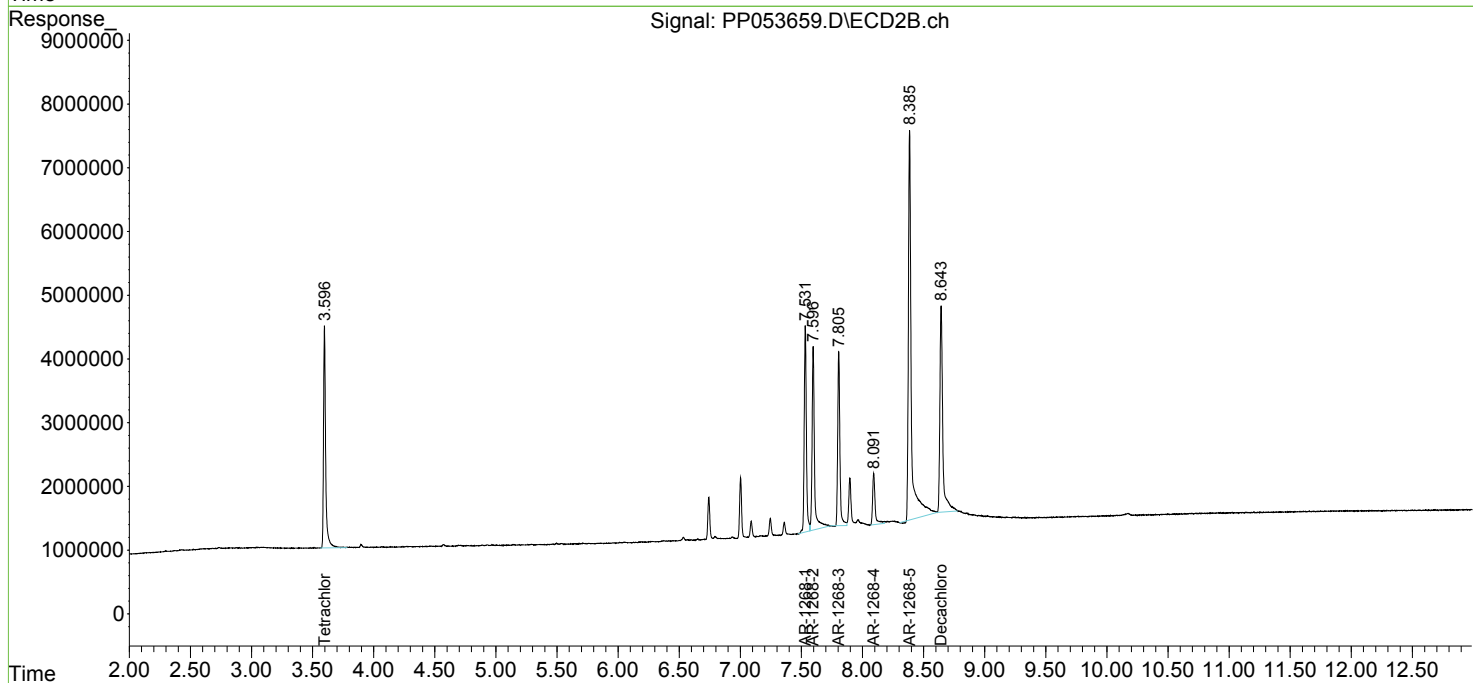
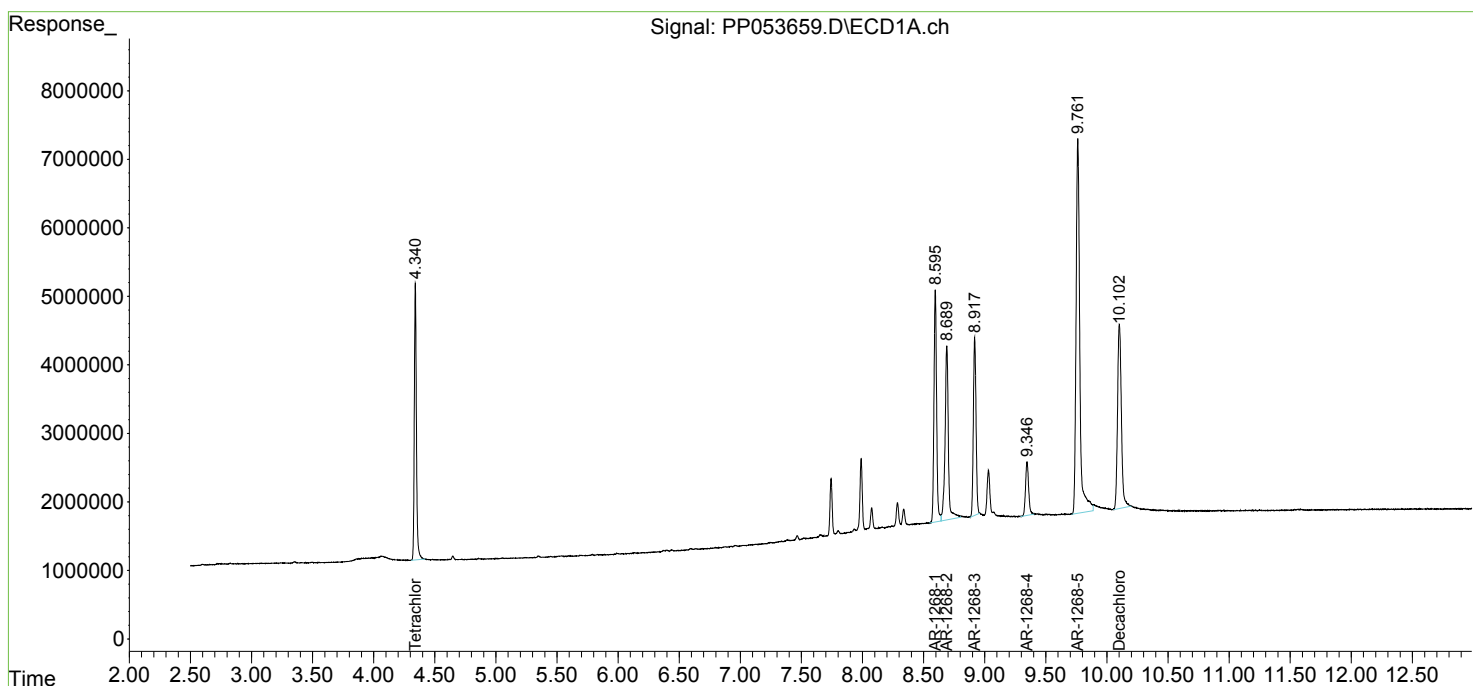
(f)=RT Delta > 1/2 Window (#)=Amounts differ by > 25% (m)=manual int.

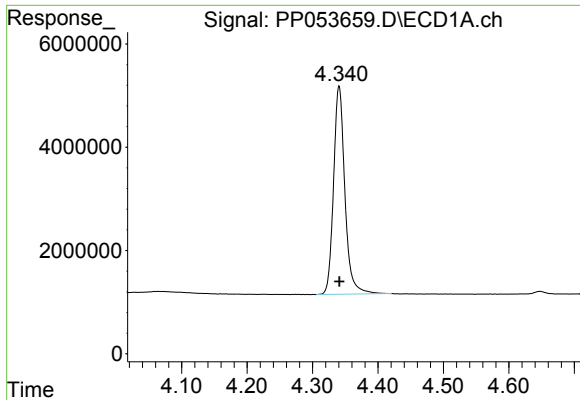
Data Path : Z:\pestpcbsrv\HPCHEM1\ECD_P\Data\PP120822\
 Data File : PP053659.D
 Signal(s) : Signal #1: ECD1A.ch Signal #2: ECD2B.ch
 Acq On : 08 Dec 2022 16:35
 Operator : YP\AJ
 Sample : AR1268ICC250
 Misc :
 ALS Vial : 29 Sample Multiplier: 1

Instrument :
 ECD_P
 ClientSampleId :
 AR1268ICC250

Integration File signal 1: autoint1.e
 Integration File signal 2: autoint2.e
 Quant Time: Dec 08 16:54:37 2022
 Quant Method : Z:\pestpcbsrv\HPCHEM1\ECD_P\methods\PP120822.M
 Quant Title : GC EXTRACTABLES
 QLast Update : Thu Dec 08 16:47:34 2022
 Response via : Initial Calibration
 Integrator: ChemStation

Volume Inj. : 2 µl
 Signal #1 Phase : ZB-MR1 Signal #2 Phase: ZB-MR2
 Signal #1 Info : 30Mx0.32mmx 0.50µ Signal #2 Info : 30M x 0.32mm x 0.25µm

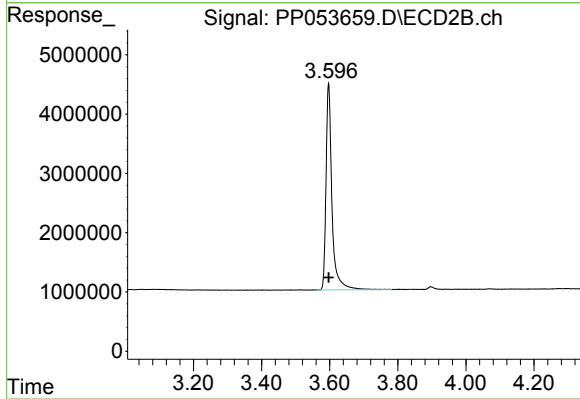




#1 Tetrachloro-m-xylene

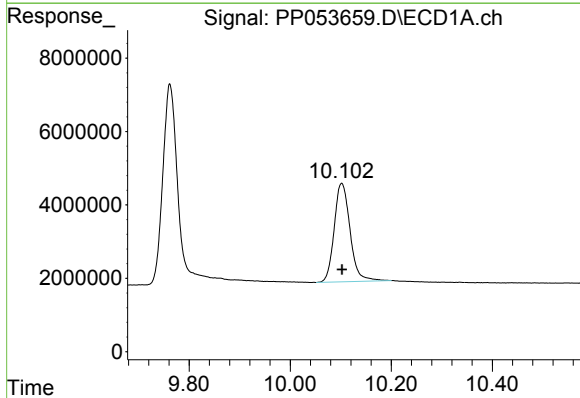
R.T.: 4.341 min
 Delta R.T.: 0.000 min
 Response: 48504930
 Conc: 25.02 ng/ml

Instrument :
 ECD_P
 ClientSampleId :
 AR1268ICC250



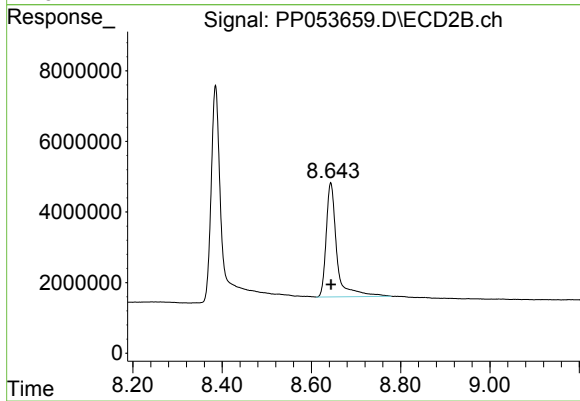
#1 Tetrachloro-m-xylene

R.T.: 3.597 min
 Delta R.T.: 0.000 min
 Response: 42317036
 Conc: 24.70 ng/ml



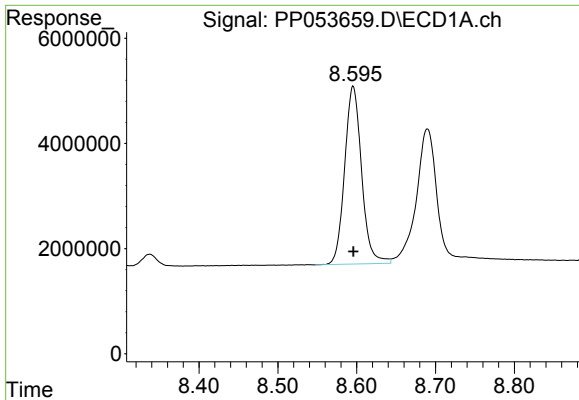
#2 Decachlorobiphenyl

R.T.: 10.102 min
 Delta R.T.: 0.000 min
 Response: 58574764
 Conc: 24.99 ng/ml



#2 Decachlorobiphenyl

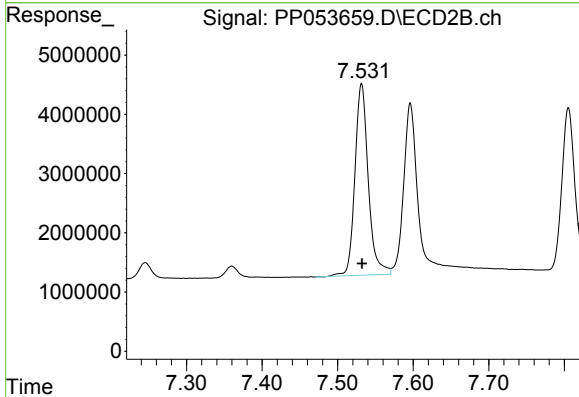
R.T.: 8.643 min
 Delta R.T.: 0.000 min
 Response: 53568345
 Conc: 25.35 ng/ml



#41 AR-1268-1

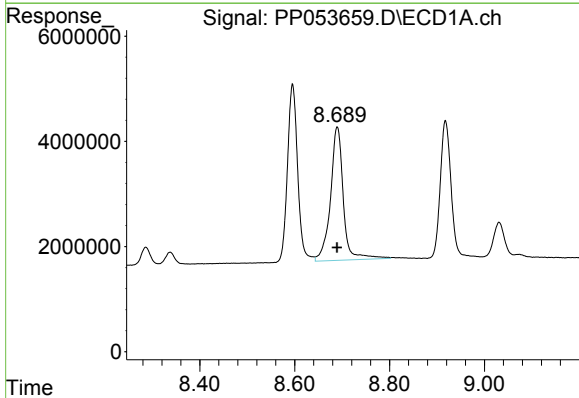
R.T.: 8.595 min
 Delta R.T.: 0.000 min
 Response: 50527794
 Conc: 251.51 ng/ml

Instrument :
 ECD_P
 ClientSampleId :
 AR1268ICC250



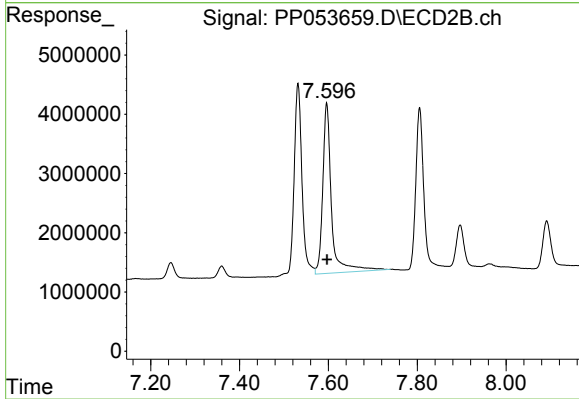
#41 AR-1268-1

R.T.: 7.532 min
 Delta R.T.: 0.000 min
 Response: 39752287
 Conc: 250.41 ng/ml



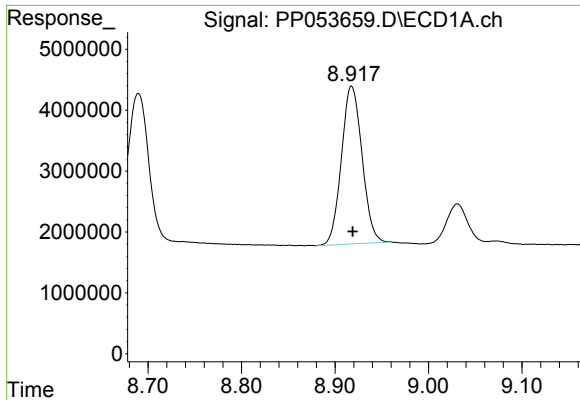
#42 AR-1268-2

R.T.: 8.690 min
 Delta R.T.: 0.000 min
 Response: 47681954
 Conc: 251.82 ng/ml



#42 AR-1268-2

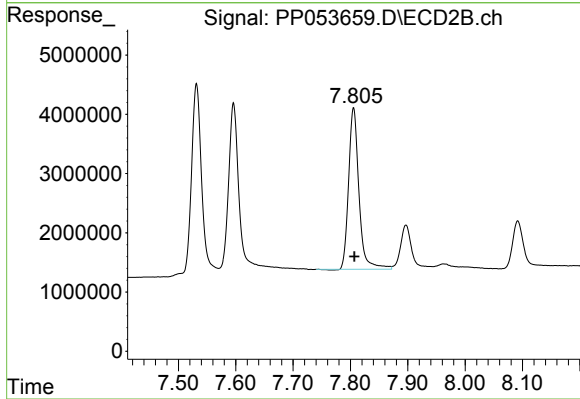
R.T.: 7.596 min
 Delta R.T.: 0.000 min
 Response: 39358121
 Conc: 249.09 ng/ml



#43 AR-1268-3

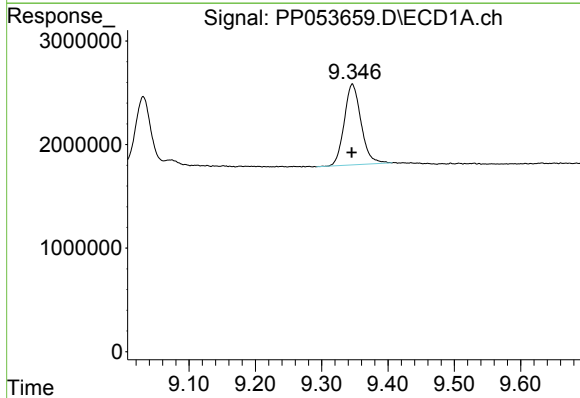
R.T.: 8.918 min
 Delta R.T.: -0.001 min
 Response: 39726917
 Conc: 249.68 ng/ml

Instrument :
 ECD_P
 ClientSampleId :
 AR1268ICC250



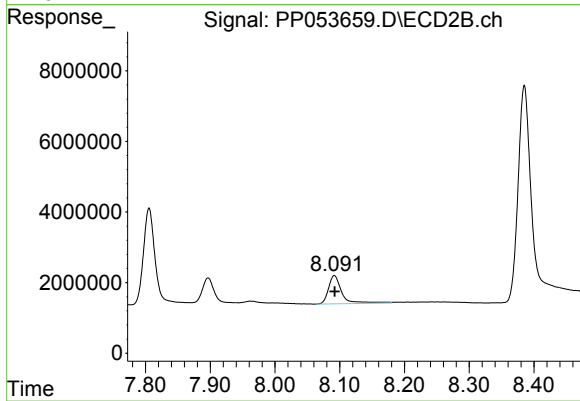
#43 AR-1268-3

R.T.: 7.805 min
 Delta R.T.: -0.001 min
 Response: 33971749
 Conc: 251.18 ng/ml



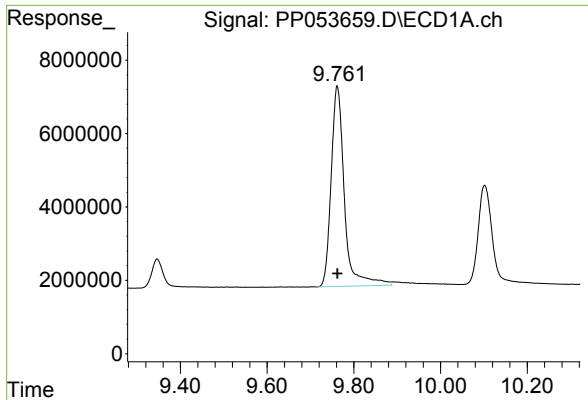
#44 AR-1268-4

R.T.: 9.346 min
 Delta R.T.: 0.000 min
 Response: 13748777
 Conc: 248.50 ng/ml



#44 AR-1268-4

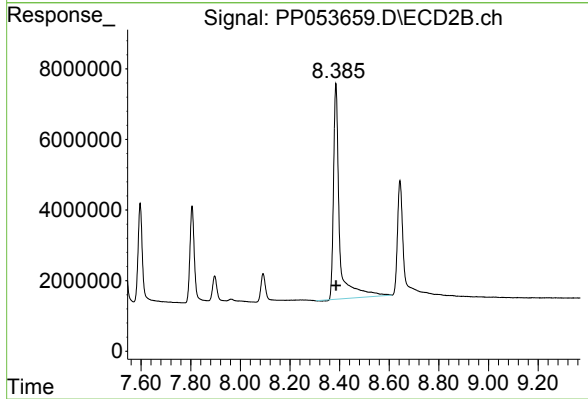
R.T.: 8.092 min
 Delta R.T.: 0.000 min
 Response: 11614804
 Conc: 251.13 ng/ml



#45 AR-1268-5

R.T.: 9.762 min
Delta R.T.: 0.000 min
Response: 115834474
Conc: 240.54 ng/ml

Instrument :
ECD_P
ClientSampleId :
AR1268ICC250



#45 AR-1268-5

R.T.: 8.385 min
Delta R.T.: -0.001 min
Response: 103619517
Conc: 244.44 ng/ml