

Data Path : Z:\pestpcbsrv\HPCHEM1\ECD_P\Data\PP120921\
 Data File : PP041866.D
 Signal(s) : Signal #1: ECD1A.CH Signal #2: ECD2B.CH
 Acq On : 10 Dec 2021 5:08
 Operator : AJ\MA
 Sample : I.BLK
 Misc :
 ALS Vial : 2 Sample Multiplier: 1

Instrument :
 ECD_P
 ClientSampleId :
 I.BLK

Integration File signal 1: autoint1.e
 Integration File signal 2: autoint2.e
 Quant Time: Dec 10 06:55:55 2021
 Quant Method : Z:\pestpcbsrv\HPCHEM1\ECD_P\methods\PP113021.M
 Quant Title : GC EXTRACTABLES
 QLast Update : Tue Nov 30 23:30:32 2021
 Response via : Initial Calibration
 Integrator: ChemStation 6890 Scale Mode: Small noise peaks clipped

Volume Inj. : 2 µl
 Signal #1 Phase : ZB-MR1 Signal #2 Phase: ZB-MR2
 Signal #1 Info : 30Mx0.32mmx 0.50µ Signal #2 Info : 30M x 0.32mm x 0.25µm

Compound	RT#1	RT#2	Resp#1	Resp#2	ng/ml	ng/ml

System Monitoring Compounds						
1) SA Tetrachlo...	4.741	3.744	499541	668388	22.153	22.004
2) SA Decachlor...	10.631	8.995	481717	336158	22.372	21.750

Target Compounds

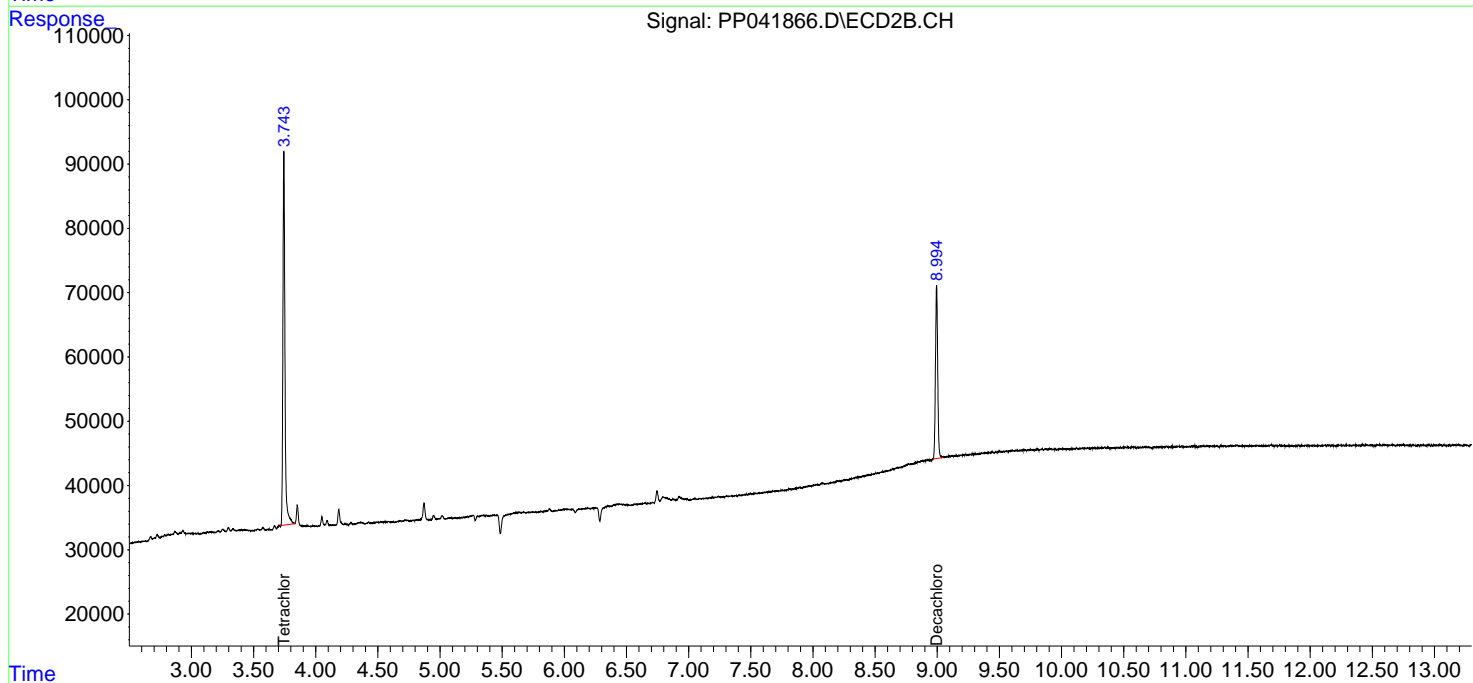
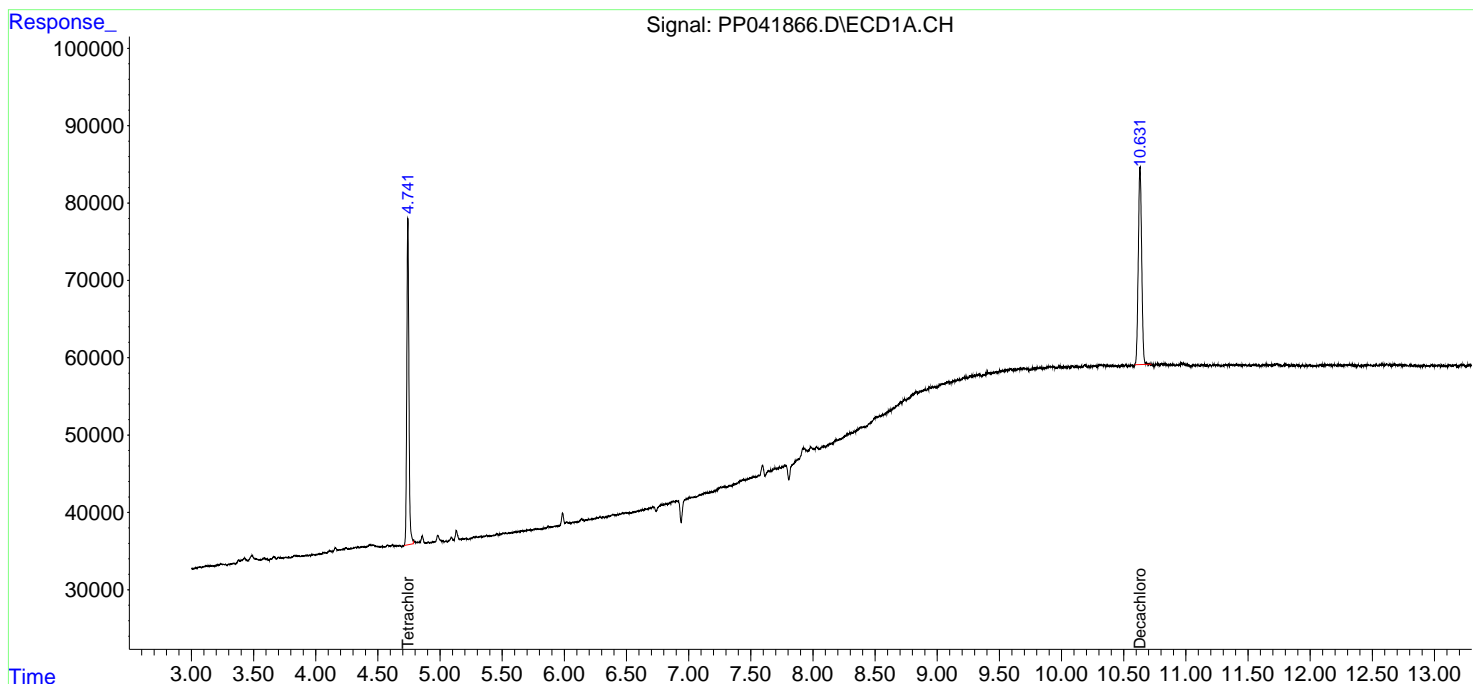
(f)=RT Delta > 1/2 Window (#)=Amounts differ by > 25% (m)=manual int.

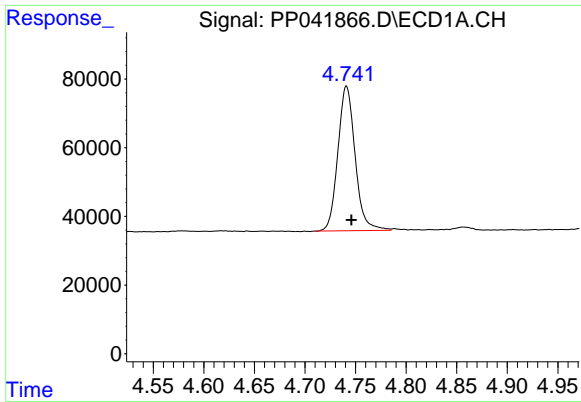
Data Path : Z:\pestpcbsrv\HPCHEM1\ECD_P\Data\PP120921\
 Data File : PP041866.D
 Signal(s) : Signal #1: ECD1A.CH Signal #2: ECD2B.CH
 Acq On : 10 Dec 2021 5:08
 Operator : AJ\MA
 Sample : I.BLK
 Misc :
 ALS Vial : 2 Sample Multiplier: 1

Instrument :
 ECD_P
 ClientSampleId :
 I.BLK

Integration File signal 1: autoint1.e
 Integration File signal 2: autoint2.e
 Quant Time: Dec 10 06:55:55 2021
 Quant Method : Z:\pestpcbsrv\HPCHEM1\ECD_P\methods\PP113021.M
 Quant Title : GC EXTRACTABLES
 QLast Update : Tue Nov 30 23:30:32 2021
 Response via : Initial Calibration
 Integrator: ChemStation 6890 Scale Mode: Small noise peaks clipped

Volume Inj. : 2 µl
 Signal #1 Phase : ZB-MR1 Signal #2 Phase: ZB-MR2
 Signal #1 Info : 30Mx0.32mmx 0.50µ Signal #2 Info : 30M x 0.32mm x 0.25µm

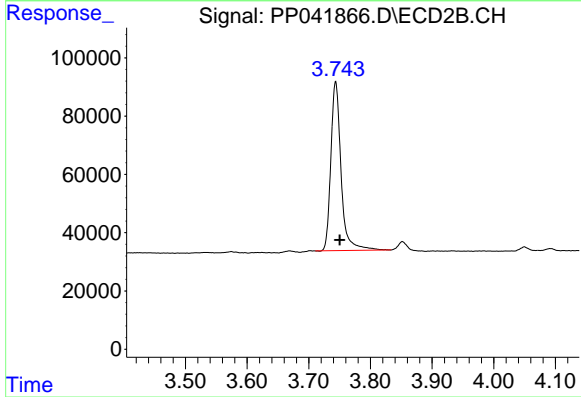




#1 Tetrachloro-m-xylene

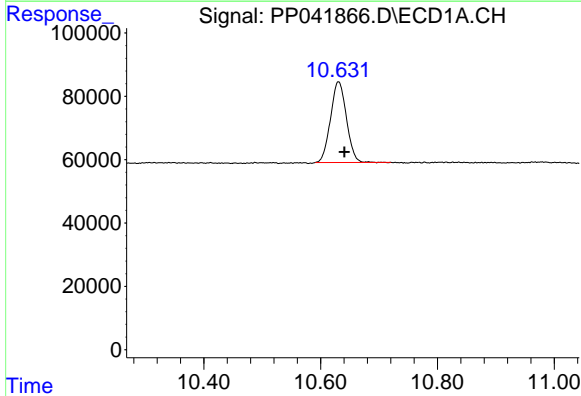
R.T.: 4.741 min
 Delta R.T.: -0.005 min
 Response: 499541
 Conc: 22.15 ng/ml

Instrument :
 ECD_P
 ClientSampleId :
 I.BLK



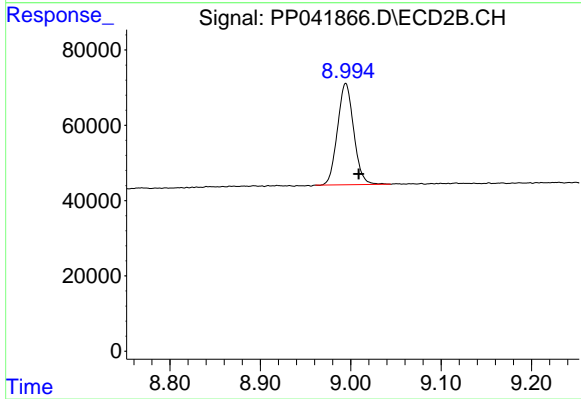
#1 Tetrachloro-m-xylene

R.T.: 3.744 min
 Delta R.T.: -0.006 min
 Response: 668388
 Conc: 22.00 ng/ml



#2 Decachlorobiphenyl

R.T.: 10.631 min
 Delta R.T.: -0.010 min
 Response: 481717
 Conc: 22.37 ng/ml



#2 Decachlorobiphenyl

R.T.: 8.995 min
 Delta R.T.: -0.014 min
 Response: 336158
 Conc: 21.75 ng/ml