

Data Path : Z:\pestpcbsrv\HPCHEM1\ECD_P\Data\PP121020\
 Data File : PP031981.D
 Signal(s) : Signal #1: ECD1A.CH Signal #2: ECD2B.CH
 Acq On : 10 Dec 2020 17:13
 Operator : DD\AJ
 Sample : I.BLK
 Misc :
 ALS Vial : 2 Sample Multiplier: 1

Instrument :
 ECD_P
 ClientSampleId :
 I.BLK

Integration File signal 1: autoint1.e
 Integration File signal 2: autoint2.e
 Quant Time: Dec 11 01:33:28 2020
 Quant Method : Z:\pestpcbsrv\HPCHEM1\ECD_P\methods\PP112220.M
 Quant Title : GC EXTRACTABLES
 QLast Update : Tue Nov 24 12:23:58 2020
 Response via : Initial Calibration
 Integrator: ChemStation 6890 Scale Mode: Small noise peaks clipped

Volume Inj. : 2 µl
 Signal #1 Phase : ZB-MR1 Signal #2 Phase: ZB-MR2
 Signal #1 Info : 30Mx0.32mmx 0.50µ Signal #2 Info : 30M x 0.32mm x 0.25µm

Compound	RT#1	RT#2	Resp#1	Resp#2	ng/ml	ng/ml

System Monitoring Compounds						
1) SA Tetrachlo...	4.783	4.055	1347624	1247999	27.830	26.044
2) SA Decachlor...	10.651	9.351	878426	934373	25.863	25.235

Target Compounds

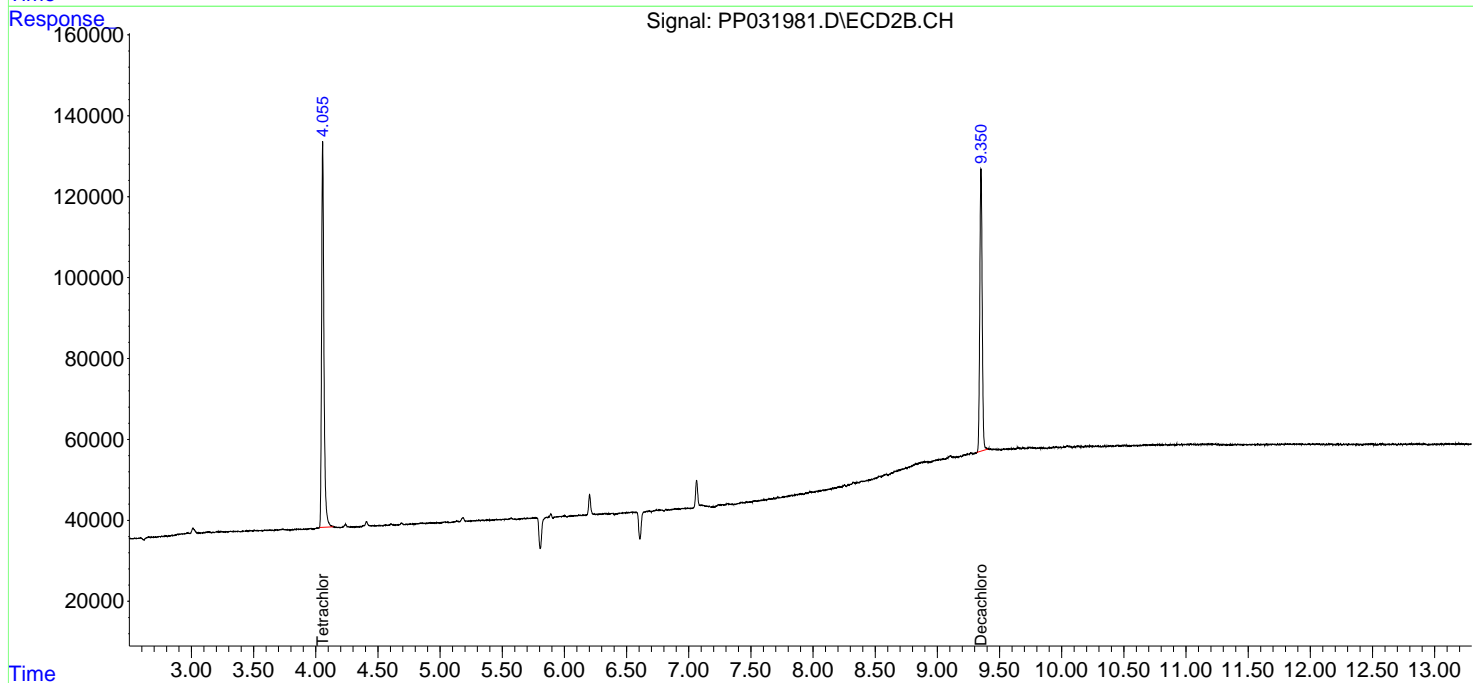
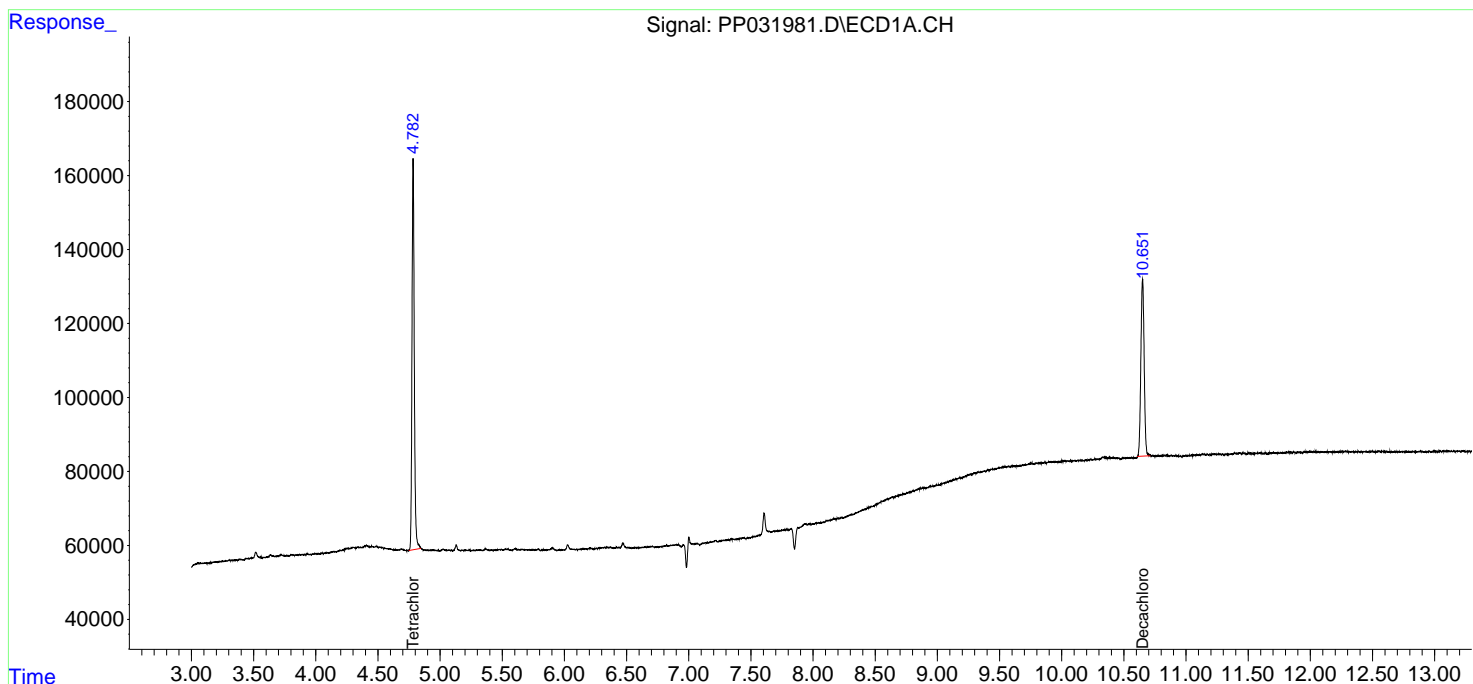
(f)=RT Delta > 1/2 Window (#)=Amounts differ by > 25% (m)=manual int.

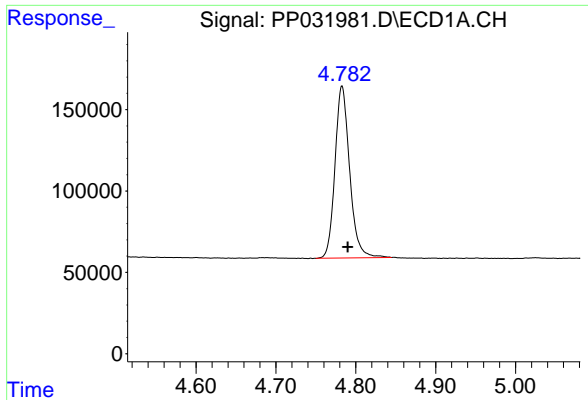
Data Path : Z:\pestpcbsrv\HPCHEM1\ECD_P\Data\PP121020\
 Data File : PP031981.D
 Signal(s) : Signal #1: ECD1A.CH Signal #2: ECD2B.CH
 Acq On : 10 Dec 2020 17:13
 Operator : DD\AJ
 Sample : I.BLK
 Misc :
 ALS Vial : 2 Sample Multiplier: 1

Instrument :
 ECD_P
 ClientSampleID :
 I.BLK

Integration File signal 1: autoint1.e
 Integration File signal 2: autoint2.e
 Quant Time: Dec 11 01:33:28 2020
 Quant Method : Z:\pestpcbsrv\HPCHEM1\ECD_P\methods\PP112220.M
 Quant Title : GC EXTRACTABLES
 QLast Update : Tue Nov 24 12:23:58 2020
 Response via : Initial Calibration
 Integrator: ChemStation 6890 Scale Mode: Small noise peaks clipped

Volume Inj. : 2 µl
 Signal #1 Phase : ZB-MR1 Signal #2 Phase: ZB-MR2
 Signal #1 Info : 30Mx0.32mmx 0.50µ Signal #2 Info : 30M x 0.32mm x 0.25µm

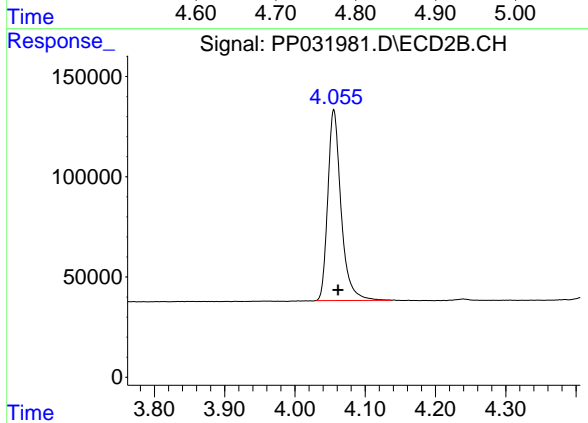




#1 Tetrachloro-m-xylene

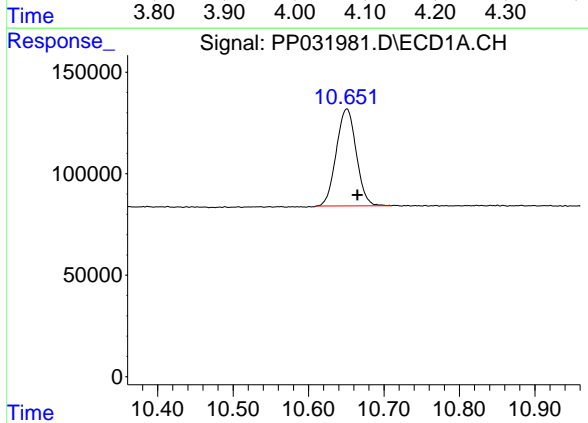
R.T.: 4.783 min
 Delta R.T.: -0.007 min
 Response: 1347624
 Conc: 27.83 ng/ml

Instrument :
 ECD_P
 ClientSampled :
 I.BLK



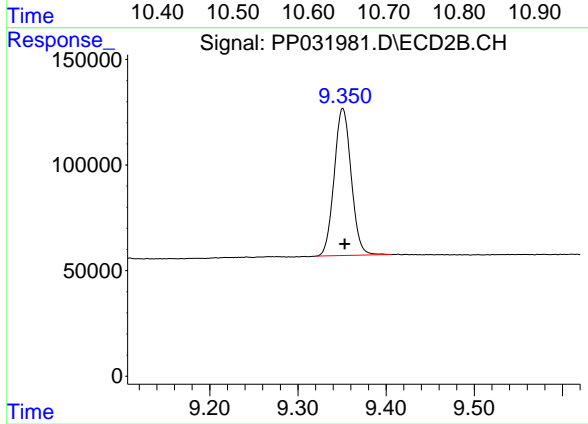
#1 Tetrachloro-m-xylene

R.T.: 4.055 min
 Delta R.T.: -0.006 min
 Response: 1247999
 Conc: 26.04 ng/ml



#2 Decachlorobiphenyl

R.T.: 10.651 min
 Delta R.T.: -0.014 min
 Response: 878426
 Conc: 25.86 ng/ml



#2 Decachlorobiphenyl

R.T.: 9.351 min
 Delta R.T.: -0.002 min
 Response: 934373
 Conc: 25.23 ng/ml