

Data Path : Z:\pestpcbsrv\HPCHEM1\ECD_P\Data\PP121024\
 Data File : PP068879.D
 Signal(s) : Signal #1: ECD1A.ch Signal #2: ECD2B.ch
 Acq On : 10 Dec 2024 10:57
 Operator : YP\AJ
 Sample : I.BLK
 Misc :
 ALS Vial : 2 Sample Multiplier: 1

Instrument :
 ECD_P
 ClientSampleId :
 I.BLK

Integration File signal 1: autoint1.e
 Integration File signal 2: autoint2.e
 Quant Time: Dec 11 00:16:39 2024
 Quant Method : Z:\pestpcbsrv\HPCHEM1\ECD_P\methods\PP121024.M
 Quant Title : GC EXTRACTABLES
 QLast Update : Wed Dec 11 00:03:49 2024
 Response via : Initial Calibration
 Integrator: ChemStation

Volume Inj. : 2 µl
 Signal #1 Phase : ZB-MR1 Signal #2 Phase: ZB-MR2
 Signal #1 Info : 30Mx0.32mmx 0.50µ Signal #2 Info : 30M x 0.32mm x 0.25µm

Compound	RT#1	RT#2	Resp#1	Resp#2	ng/ml	ng/ml

System Monitoring Compounds						
1) SA Tetrachlo...	4.667	3.981	32549578	22582564	23.025	22.457
2) SA Decachlor...	10.510	9.105	28064299	29819422	24.900	25.366

Target Compounds

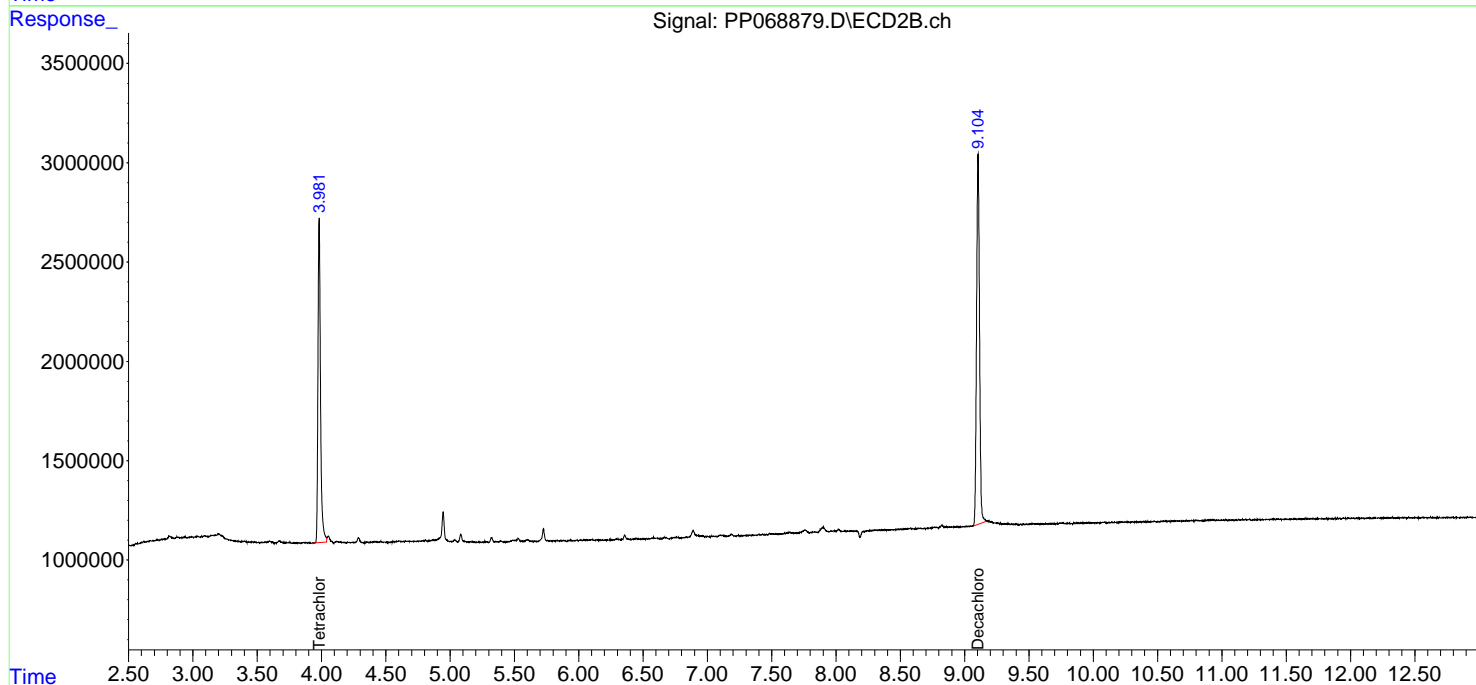
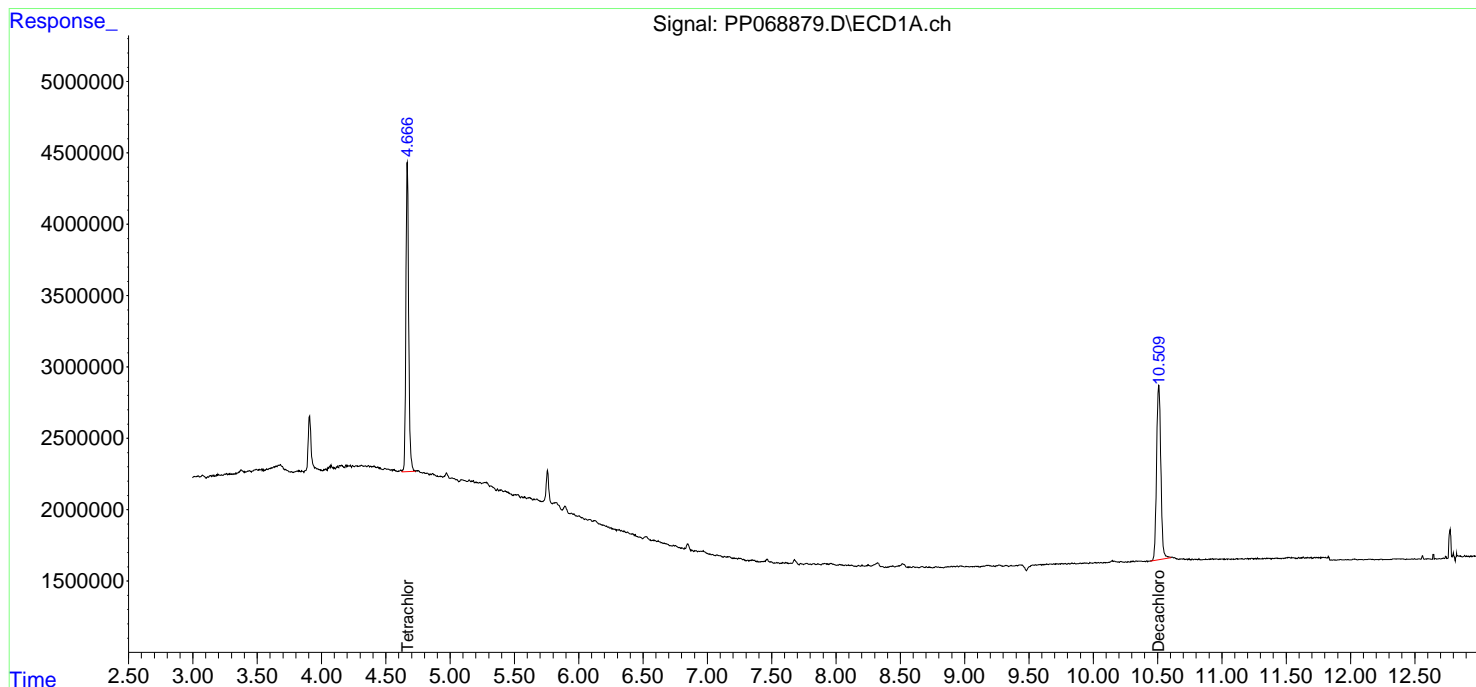
(f)=RT Delta > 1/2 Window (#)=Amounts differ by > 25% (m)=manual int.

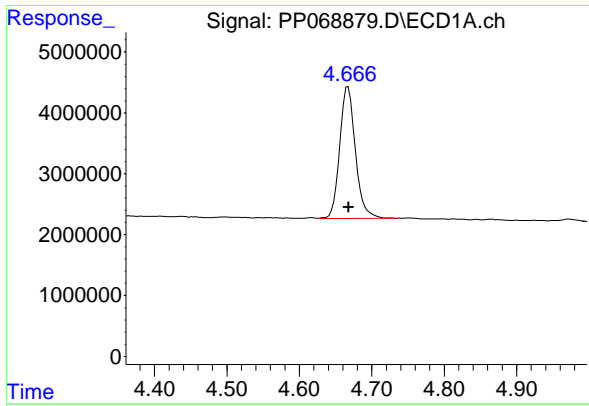
Data Path : Z:\pestpcbsrv\HPCHEM1\ECD_P\Data\PP121024\
 Data File : PP068879.D
 Signal(s) : Signal #1: ECD1A.ch Signal #2: ECD2B.ch
 Acq On : 10 Dec 2024 10:57
 Operator : YP\AJ
 Sample : I.BLK
 Misc :
 ALS Vial : 2 Sample Multiplier: 1

Instrument :
 ECD_P
 ClientSampleId :
 I.BLK

Integration File signal 1: autoint1.e
 Integration File signal 2: autoint2.e
 Quant Time: Dec 11 00:16:39 2024
 Quant Method : Z:\pestpcbsrv\HPCHEM1\ECD_P\methods\PP121024.M
 Quant Title : GC EXTRACTABLES
 QLast Update : Wed Dec 11 00:03:49 2024
 Response via : Initial Calibration
 Integrator: ChemStation

Volume Inj. : 2 µl
 Signal #1 Phase : ZB-MR1 Signal #2 Phase: ZB-MR2
 Signal #1 Info : 30Mx0.32mmx 0.50µm Signal #2 Info : 30M x 0.32mm x 0.25µm

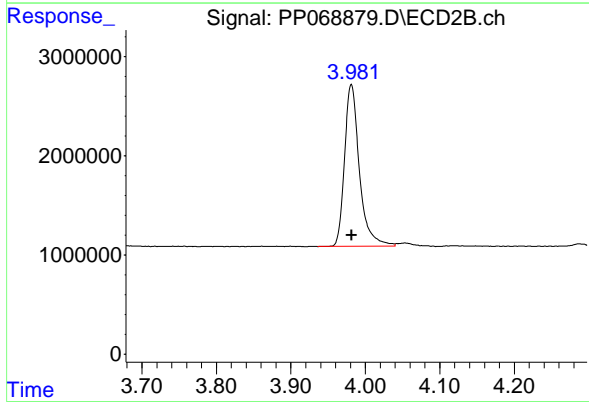




#1 Tetrachloro-m-xylene

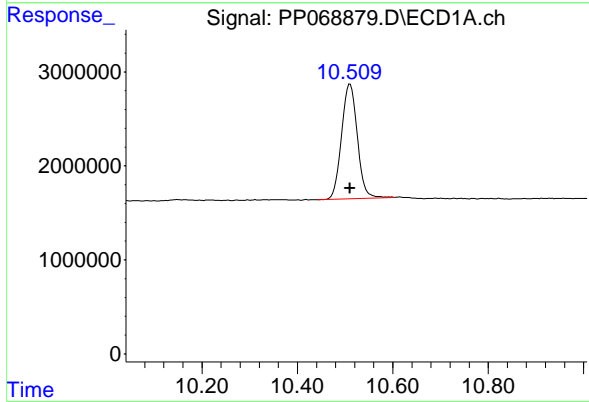
R.T.: 4.667 min
 Delta R.T.: 0.000 min
 Response: 32549578
 Conc: 23.03 ng/ml

Instrument :
 ECD_P
 ClientSampleId :
 I.BLK



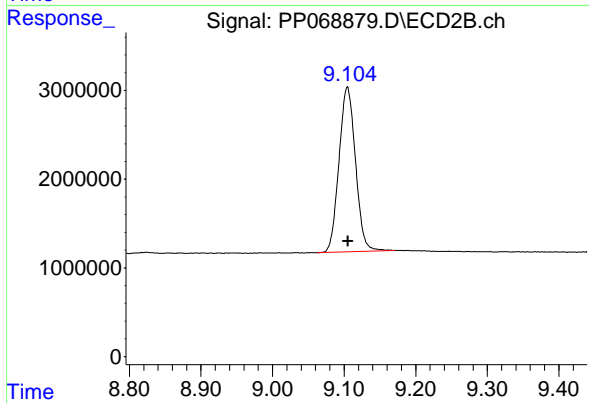
#1 Tetrachloro-m-xylene

R.T.: 3.981 min
 Delta R.T.: 0.000 min
 Response: 22582564
 Conc: 22.46 ng/ml



#2 Decachlorobiphenyl

R.T.: 10.510 min
 Delta R.T.: 0.000 min
 Response: 28064299
 Conc: 24.90 ng/ml



#2 Decachlorobiphenyl

R.T.: 9.105 min
 Delta R.T.: 0.000 min
 Response: 29819422
 Conc: 25.37 ng/ml