

Data Path : Z:\pestpcbsrv\HPCHEM1\ECD_P\Data\PP121024\
 Data File : PP068898.D
 Signal(s) : Signal #1: ECD1A.ch Signal #2: ECD2B.ch
 Acq On : 10 Dec 2024 16:07
 Operator : YP\AJ
 Sample : AR1254ICC750
 Misc :
 ALS Vial : 21 Sample Multiplier: 1

Instrument :
 ECD_P
ClientSampleId :
 AR1254ICC750

Manual Integrations
APPROVED

Reviewed By :Yogesh Patel 12/11/2024
 Supervised By :Ankita Jodhani 12/11/2024

Integration File signal 1: autoint1.e
 Integration File signal 2: autoint2.e
 Quant Time: Dec 10 23:24:15 2024
 Quant Method : Z:\pestpcbsrv\HPCHEM1\ECD_P\methods\PP121024.M
 Quant Title : GC EXTRACTABLES
 QLast Update : Tue Dec 10 23:23:01 2024
 Response via : Initial Calibration
 Integrator: ChemStation

Volume Inj. : 2 µl
 Signal #1 Phase : ZB-MR1 Signal #2 Phase: ZB-MR2
 Signal #1 Info : 30Mx0.32mmx 0.50µ Signal #2 Info : 30M x 0.32mm x 0.25µm

Compound	RT#1	RT#2	Resp#1	Resp#2	ng/ml	ng/ml

System Monitoring Compounds						
1) SA Tetrachlo...	4.670	3.980	107.5E6	76908340	72.061	73.455
2) SA Decachlor...	10.513	9.103	83134711	84913231	70.651	71.050
Target Compounds						
26) L6 AR-1254-1	6.681	5.893	44607665	42396431	687.479m	738.855
27) L6 AR-1254-2	6.900	6.041	58809380	37972416	705.328	742.632
28) L6 AR-1254-3	7.264	6.449	58961064	60132310	715.275	745.709
29) L6 AR-1254-4	7.546	6.677	43932566	33065419	716.664	741.947
30) L6 AR-1254-5	7.963	7.098	47387217	54661444	710.739m	742.126

(f)=RT Delta > 1/2 Window (#)=Amounts differ by > 25% (m)=manual int.

Data Path : Z:\pestpcbsrv\HPCHEM1\ECD_P\Data\PP121024\
 Data File : PP068898.D
 Signal(s) : Signal #1: ECD1A.ch Signal #2: ECD2B.ch
 Acq On : 10 Dec 2024 16:07
 Operator : YP\AJ
 Sample : AR1254ICC750
 Misc :
 ALS Vial : 21 Sample Multiplier: 1

Instrument :

ECD_P

ClientSampleId :

AR1254ICC750

Manual Integrations

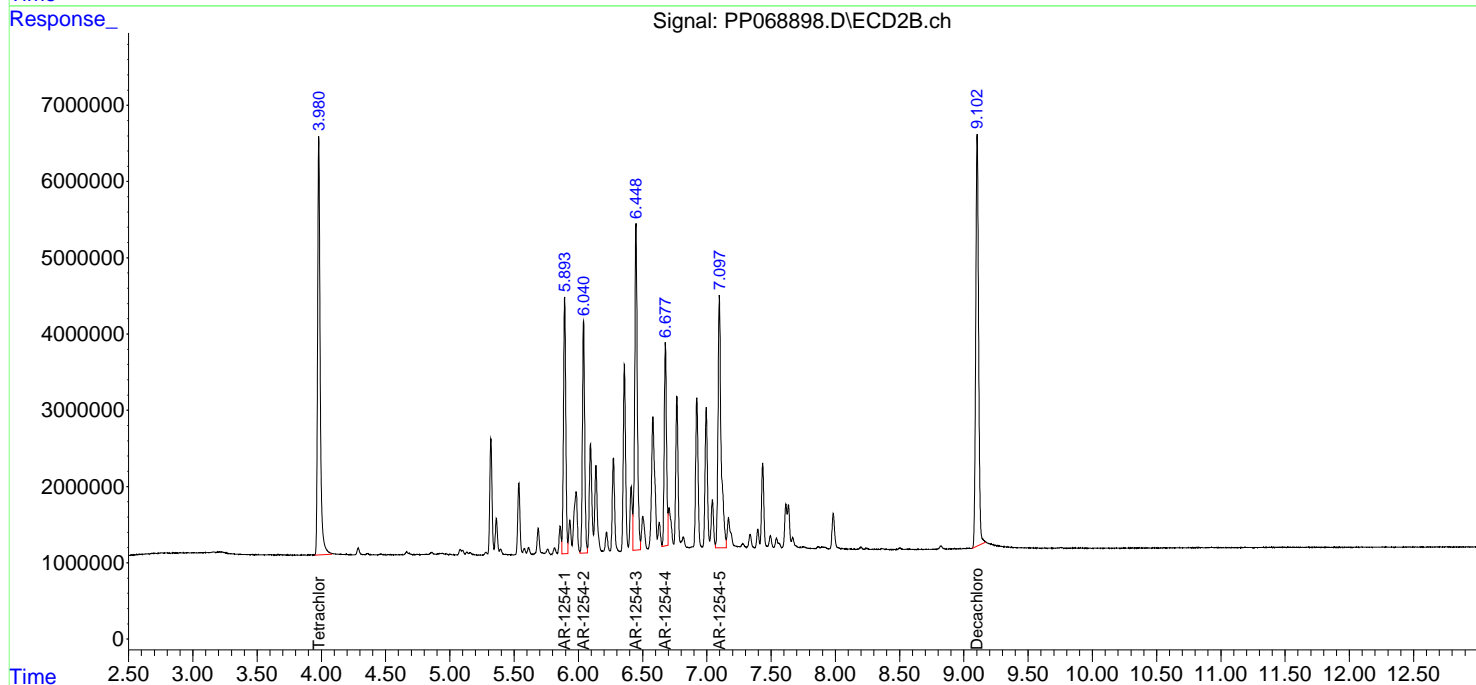
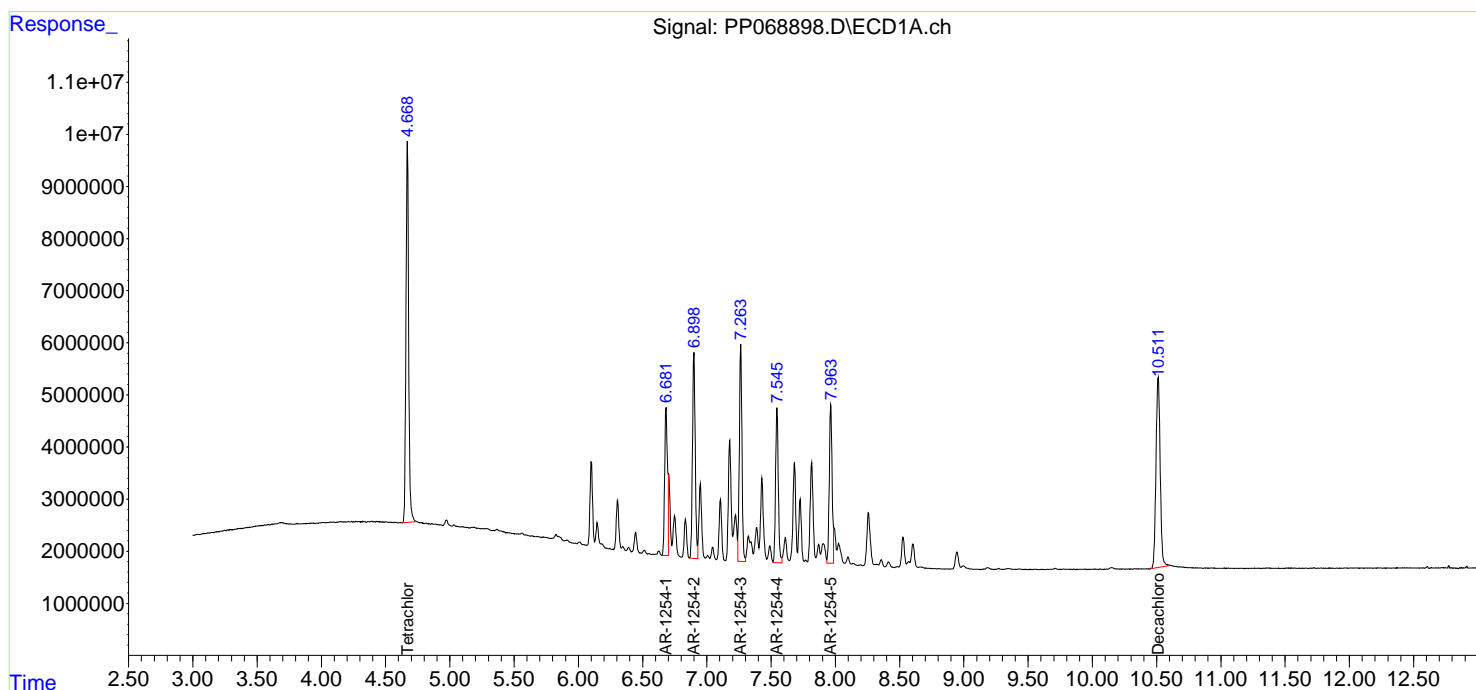
APPROVED

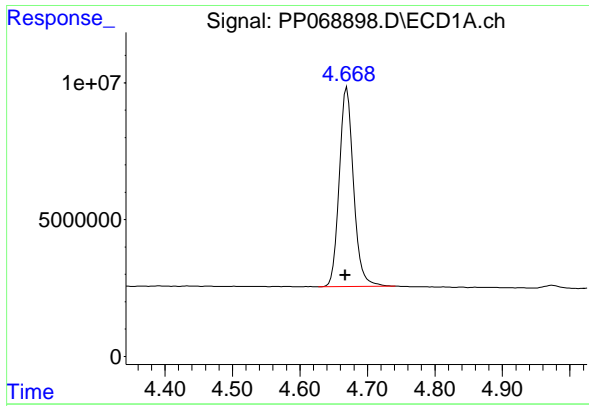
Reviewed By :Yogesh Patel 12/11/2024

Supervised By :Ankita Jodhani 12/11/2024

Integration File signal 1: autoint1.e
 Integration File signal 2: autoint2.e
 Quant Time: Dec 10 23:24:15 2024
 Quant Method : Z:\pestpcbsrv\HPCHEM1\ECD_P\methods\PP121024.M
 Quant Title : GC EXTRACTABLES
 QLast Update : Tue Dec 10 23:23:01 2024
 Response via : Initial Calibration
 Integrator: ChemStation

Volume Inj. : 2 µl
 Signal #1 Phase : ZB-MR1 Signal #2 Phase: ZB-MR2
 Signal #1 Info : 30Mx0.32mmx 0.50µm Signal #2 Info : 30M x 0.32mm x 0.25µm





#1 Tetrachloro-m-xylene

R.T.: 4.670 min
 Delta R.T.: 0.003 min
 Response: 107526863
 Conc: 72.06 ng/ml

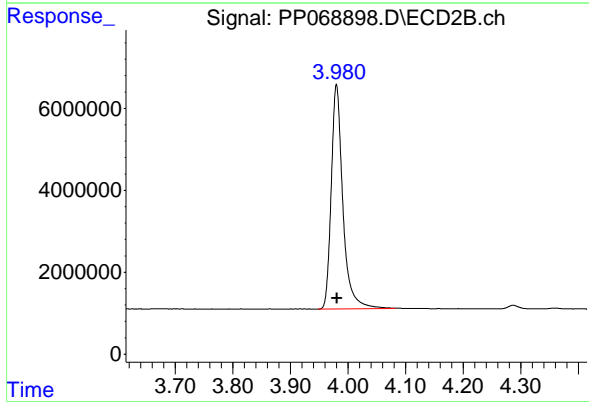
Instrument :

ECD_P

Client Sample Id :
 AR1254IC750

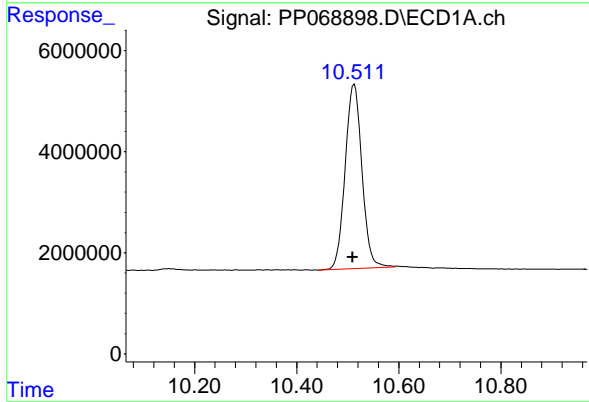
Manual Integrations
 APPROVED

Reviewed By :Yogesh Patel 12/11/2024
 Supervised By :Ankita Jodhani 12/11/2024



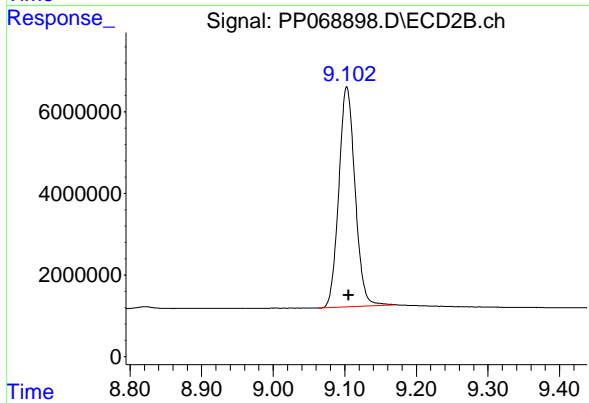
#1 Tetrachloro-m-xylene

R.T.: 3.980 min
 Delta R.T.: 0.000 min
 Response: 76908340
 Conc: 73.46 ng/ml



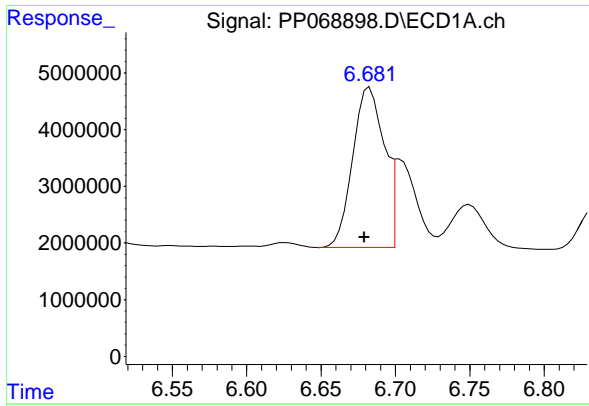
#2 Decachlorobiphenyl

R.T.: 10.513 min
 Delta R.T.: 0.003 min
 Response: 83134711
 Conc: 70.65 ng/ml



#2 Decachlorobiphenyl

R.T.: 9.103 min
 Delta R.T.: -0.003 min
 Response: 84913231
 Conc: 71.05 ng/ml



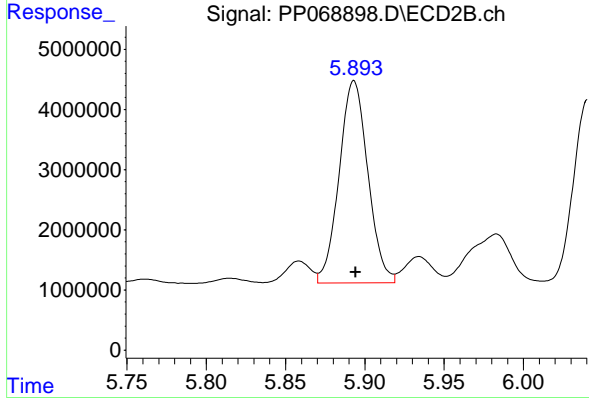
#26 AR-1254-1

R.T.: 6.681 min
 Delta R.T.: 0.002 min
 Response: 44607665
 Conc: 687.48 ng/ml

Instrument : ECD_P
 Client Sample Id : AR1254\ICC750

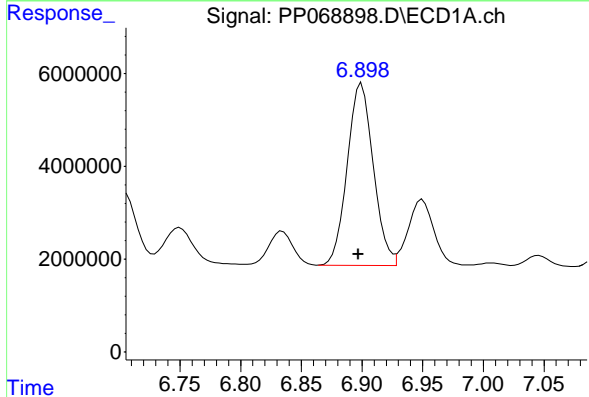
Manual Integrations
 APPROVED

Reviewed By :Yogesh Patel 12/11/2024
 Supervised By :Ankita Jodhani 12/11/2024



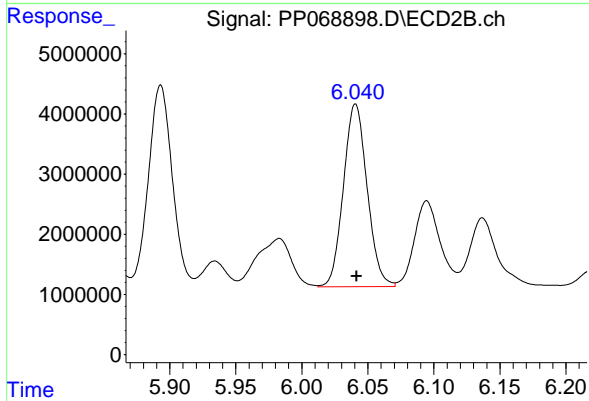
#26 AR-1254-1

R.T.: 5.893 min
 Delta R.T.: -0.001 min
 Response: 42396431
 Conc: 738.85 ng/ml



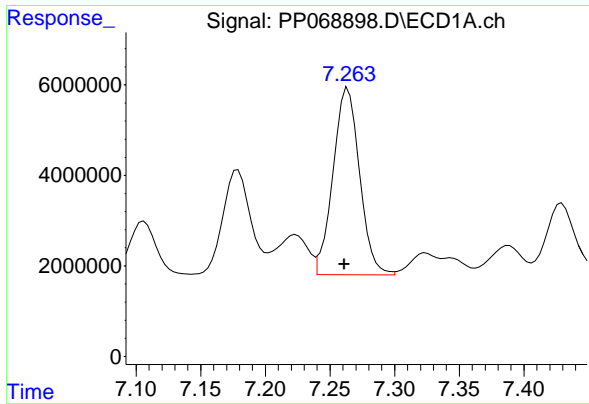
#27 AR-1254-2

R.T.: 6.900 min
 Delta R.T.: 0.003 min
 Response: 58809380
 Conc: 705.33 ng/ml



#27 AR-1254-2

R.T.: 6.041 min
 Delta R.T.: -0.001 min
 Response: 37972416
 Conc: 742.63 ng/ml



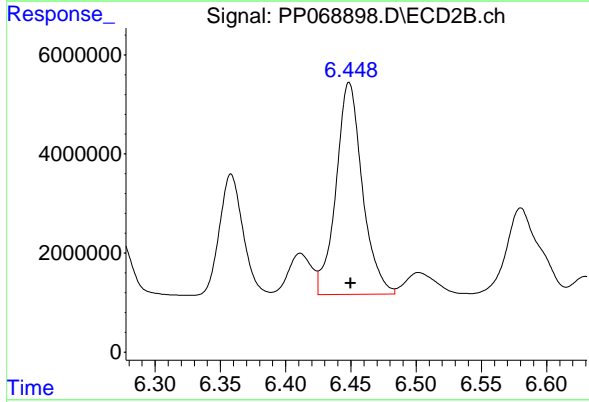
#28 AR-1254-3

R.T.: 7.264 min
 Delta R.T.: 0.003 min
 Response: 58961064
 Conc: 715.27 ng/ml

Instrument :
 ECD_P
 Client Sample Id :
 AR1254ICC750

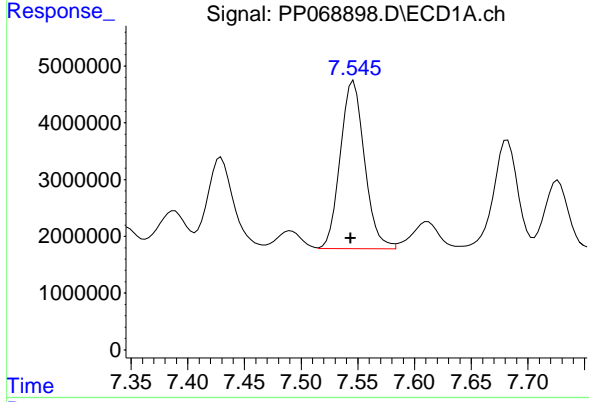
Manual Integrations
 APPROVED

Reviewed By :Yogesh Patel 12/11/2024
 Supervised By :Ankita Jodhani 12/11/2024



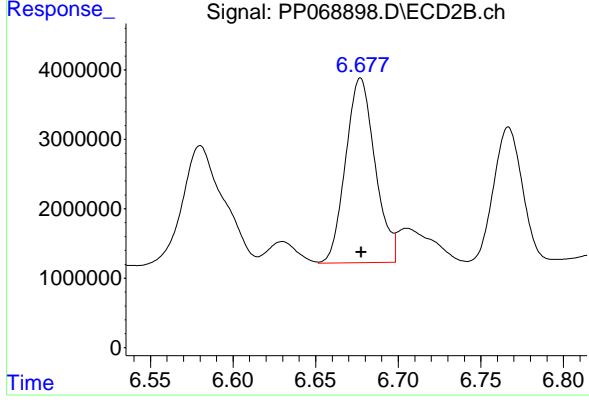
#28 AR-1254-3

R.T.: 6.449 min
 Delta R.T.: -0.001 min
 Response: 60132310
 Conc: 745.71 ng/ml



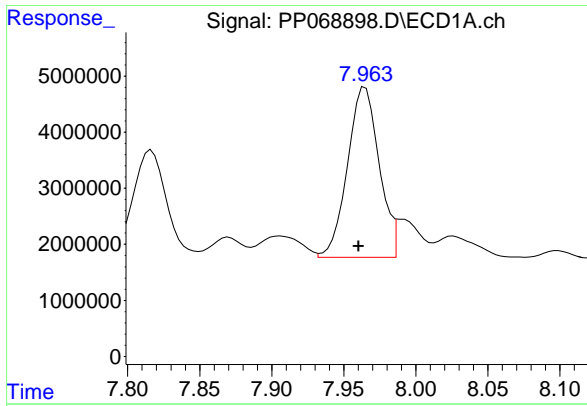
#29 AR-1254-4

R.T.: 7.546 min
 Delta R.T.: 0.003 min
 Response: 43932566
 Conc: 716.66 ng/ml



#29 AR-1254-4

R.T.: 6.677 min
 Delta R.T.: 0.000 min
 Response: 33065419
 Conc: 741.95 ng/ml



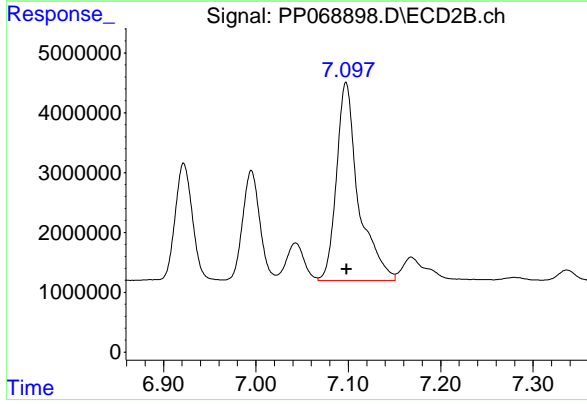
#30 AR-1254-5

R.T.: 7.963 min
 Delta R.T.: 0.003 min
 Response: 47387217
 Conc: 710.74 ng/ml

Instrument :
 ECD_P
 Client Sample Id :
 AR1254\ICC750

Manual Integrations
 APPROVED

Reviewed By :Yogesh Patel 12/11/2024
 Supervised By :Ankita Jodhani 12/11/2024



#30 AR-1254-5

R.T.: 7.098 min
 Delta R.T.: 0.000 min
 Response: 54661444
 Conc: 742.13 ng/ml