

Data Path : Z:\pestpcbsrv\HPCHEM1\ECD_P\Data\PP121321\
 Data File : PP041942.D
 Signal(s) : Signal #1: ECD1A.CH Signal #2: ECD2B.CH
 Acq On : 13 Dec 2021 18:18
 Operator : AJ\MA
 Sample : AR1221ICC500
 Misc :
 ALS Vial : 8 Sample Multiplier: 1

Instrument :
 ECD_P
 ClientSampleId :
 AR1221ICC500

Integration File signal 1: autoint1.e
 Integration File signal 2: autoint2.e
 Quant Time: Dec 14 03:25:56 2021
 Quant Method : Z:\pestpcbsrv\HPCHEM1\ECD_P\methods\PP121321.M
 Quant Title : GC EXTRACTABLES
 QLast Update : Tue Dec 14 03:25:43 2021
 Response via : Initial Calibration
 Integrator: ChemStation 6890 Scale Mode: Small noise peaks clipped

Volume Inj. : 2 µl
 Signal #1 Phase : ZB-MR2 Signal #2 Phase: ZB-MR2
 Signal #1 Info : 30Mx0.32mmx 0.50µ Signal #2 Info : 30M x 0.32mm x 0.25µm

	Compound	RT#1	RT#2	Resp#1	Resp#2	ng/ml	ng/ml

System Monitoring Compounds							
1)	SA Tetrachlo...	4.931	4.072	612913	1294680	50.000	50.000
2)	SA Decachlor...	10.933	9.439	538811	916658	50.000	50.000
Target Compounds							
8)	L2 AR-1221-1	5.172	4.335	66329	144753	500.000	500.000
9)	L2 AR-1221-2	5.272	4.436	47340	113144	500.000	500.000
10)	L2 AR-1221-3	5.357	4.525	151145	382103	500.000	500.000
11)	L3 AR-1232-1	5.357	4.525	151145	382103	629.632	607.159
12)	L3 AR-1232-2	5.946	5.365	12532	47044	102.188	84.709
13)	L3 AR-1232-3	6.262	5.559	19147	24361	86.481	81.724
14)	L3 AR-1232-4	6.439	5.656	7284	9038	66.885	36.850 #
15)	L3 AR-1232-5	0.000	5.843	0	6170	N.D.	24.058 #
36)	L8 AR-1262-1	8.557	0.000	2157	0	3.557	N.D. #
37)	L8 AR-1262-2	9.119	0.000	8010	0	7.459	N.D. #
38)	L8 AR-1262-3	9.423	0.000	2908	0	5.555	N.D. #
39)	L8 AR-1262-4	9.515	0.000	3949	0	11.433	N.D. #
40)	L8 AR-1262-5	10.185f	0.000	1281	0	3.223	N.D. #
41)	L9 AR-1268-1	9.423	0.000	2908	0	2.235	N.D. #
42)	L9 AR-1268-2	9.515	0.000	3949	0	3.091	N.D. #
43)	L9 AR-1268-3	9.745	0.000	1877	0	1.714	N.D. #
44)	L9 AR-1268-4	10.185f	0.000	1281	0	2.970	N.D. #
45)	L9 AR-1268-5	10.588	0.000	1548	0	0.430	N.D. #

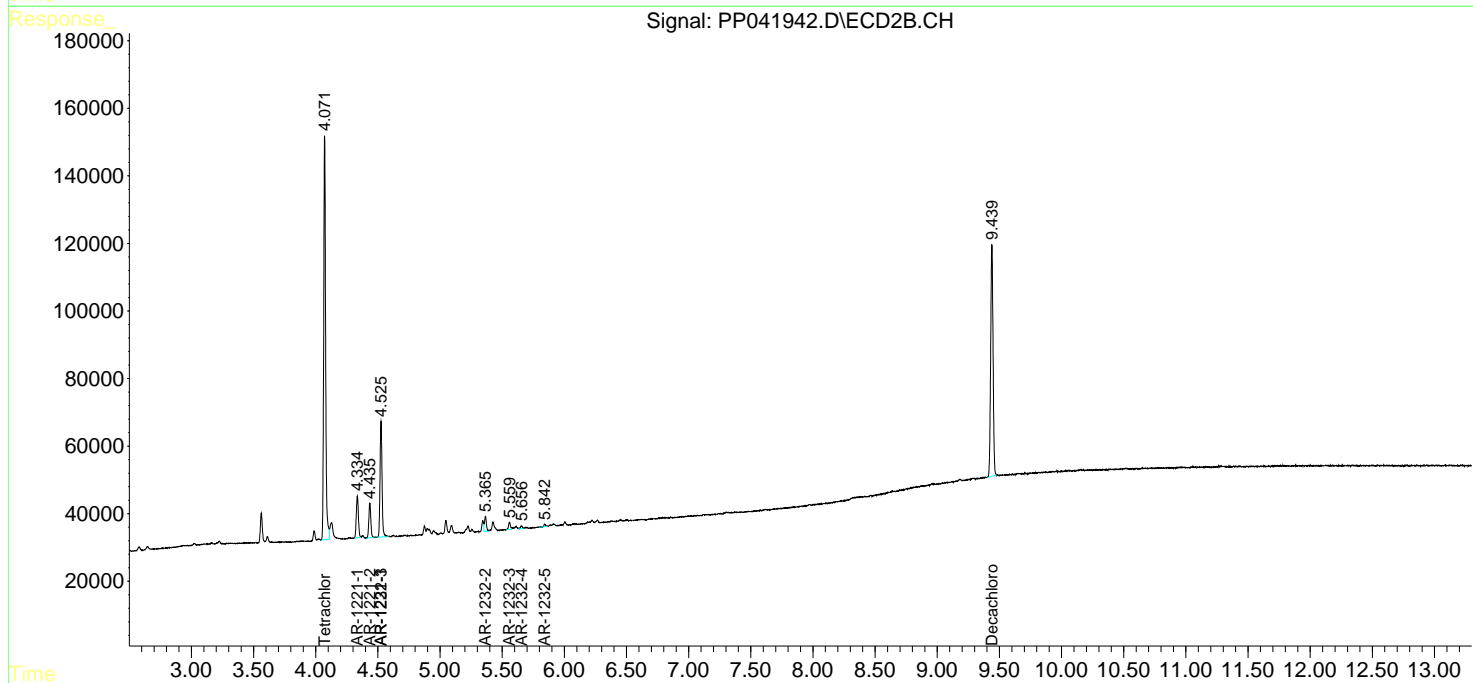
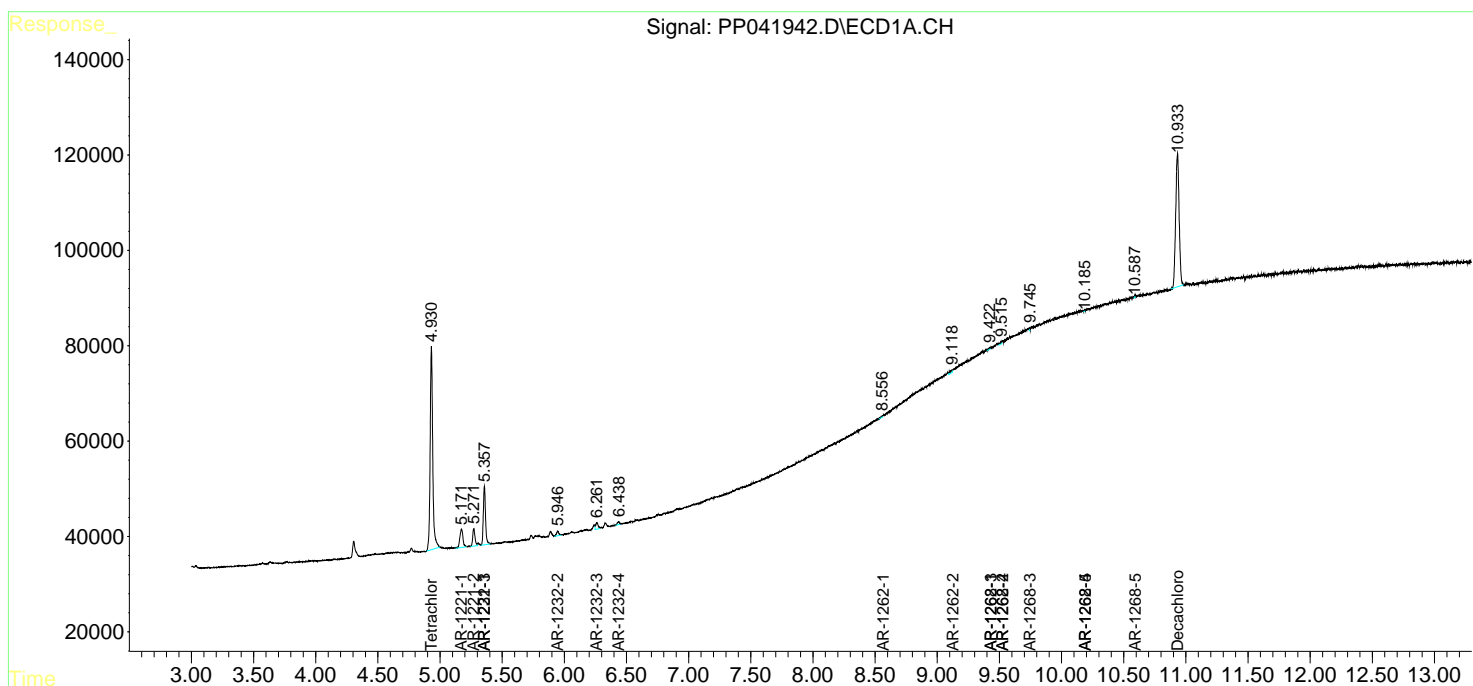
(f)=RT Delta > 1/2 Window (#)=Amounts differ by > 25% (m)=manual int.

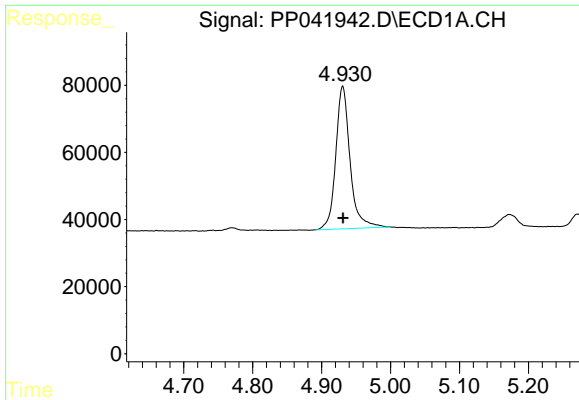
Data Path : Z:\pestpcbsrv\HPCHEM1\ECD_P\Data\PP121321\
 Data File : PP041942.D
 Signal(s) : Signal #1: ECD1A.CH Signal #2: ECD2B.CH
 Acq On : 13 Dec 2021 18:18
 Operator : AJ\MA
 Sample : AR1221ICC500
 Misc :
 ALS Vial : 8 Sample Multiplier: 1

Instrument :
 ECD_P
 ClientSampleId :
 AR1221ICC500

Integration File signal 1: autoint1.e
 Integration File signal 2: autoint2.e
 Quant Time: Dec 14 03:25:56 2021
 Quant Method : Z:\pestpcbsrv\HPCHEM1\ECD_P\methods\PP121321.M
 Quant Title : GC EXTRACTABLES
 QLast Update : Tue Dec 14 03:25:43 2021
 Response via : Initial Calibration
 Integrator: ChemStation 6890 Scale Mode: Small noise peaks clipped

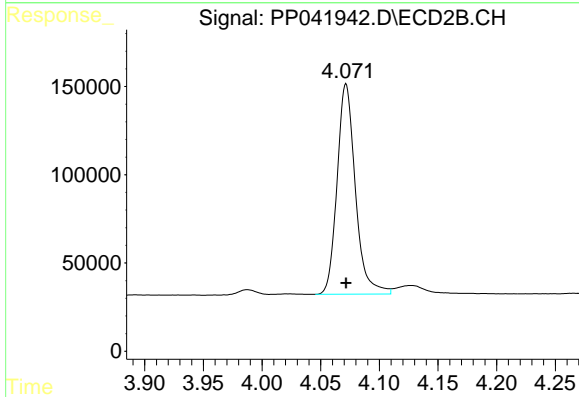
Volume Inj. : 2 µl
 Signal #1 Phase : ZB-MR1 Signal #2 Phase: ZB-MR2
 Signal #1 Info : 30Mx0.32mmx 0.50µ Signal #2 Info : 30M x 0.32mm x 0.25µm



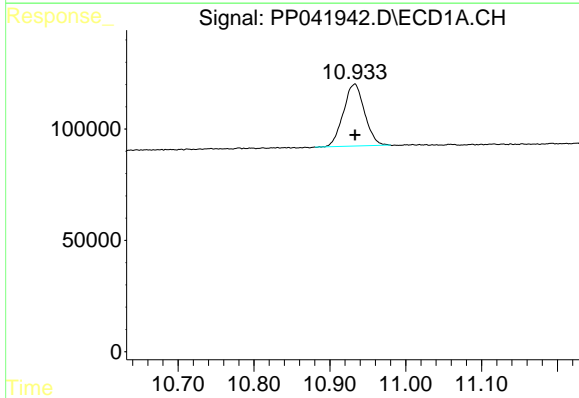


#1 Tetrachloro-m-xylene
 R.T.: 4.931 min
 Delta R.T.: 0.000 min
 Response: 612913
 Conc: 50.00 ng/ml

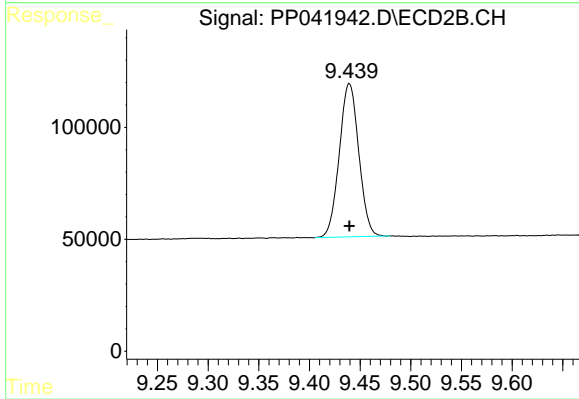
Instrument :
 ECD_P
 ClientSampleId :
 AR1221ICC500



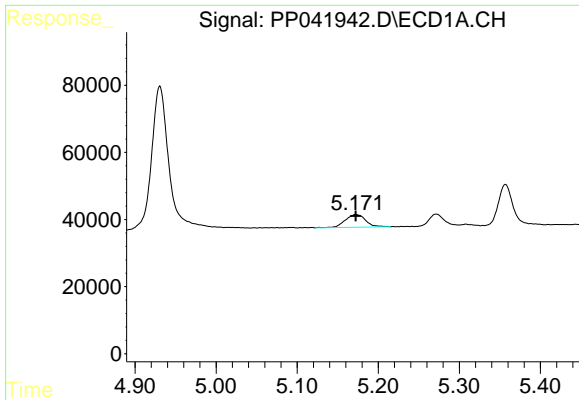
#1 Tetrachloro-m-xylene
 R.T.: 4.072 min
 Delta R.T.: 0.000 min
 Response: 1294680
 Conc: 50.00 ng/ml



#2 Decachlorobiphenyl
 R.T.: 10.933 min
 Delta R.T.: 0.000 min
 Response: 538811
 Conc: 50.00 ng/ml



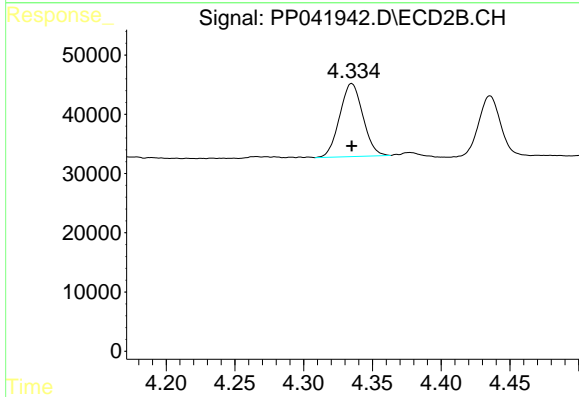
#2 Decachlorobiphenyl
 R.T.: 9.439 min
 Delta R.T.: 0.000 min
 Response: 916658
 Conc: 50.00 ng/ml



#8 AR-1221-1

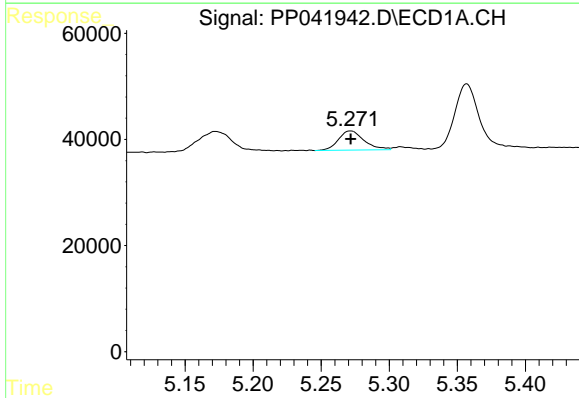
R.T.: 5.172 min
 Delta R.T.: 0.000 min
 Response: 66329
 Conc: 500.00 ng/ml

Instrument :
 ECD_P
 ClientSampleId :
 AR1221ICC500



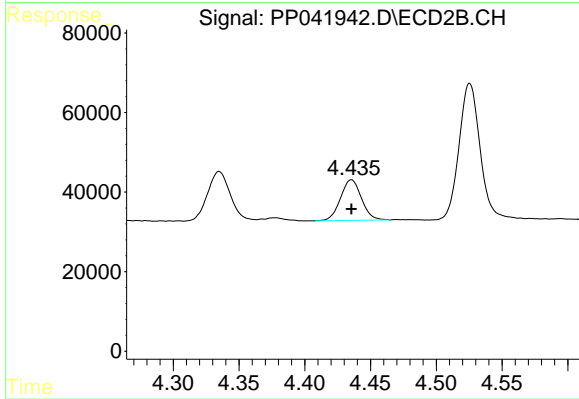
#8 AR-1221-1

R.T.: 4.335 min
 Delta R.T.: 0.000 min
 Response: 144753
 Conc: 500.00 ng/ml



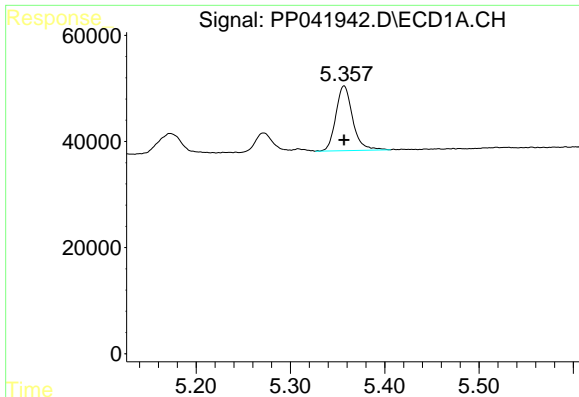
#9 AR-1221-2

R.T.: 5.272 min
 Delta R.T.: 0.000 min
 Response: 47340
 Conc: 500.00 ng/ml



#9 AR-1221-2

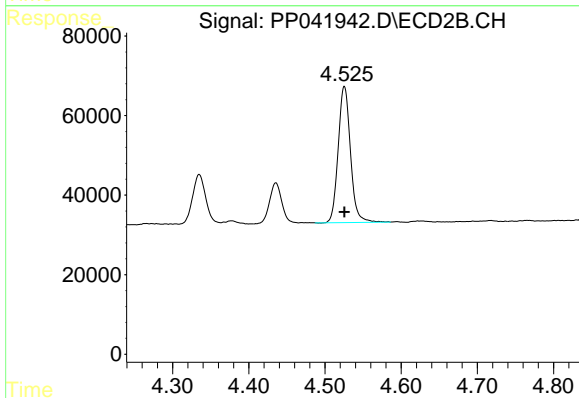
R.T.: 4.436 min
 Delta R.T.: 0.000 min
 Response: 113144
 Conc: 500.00 ng/ml



#10 AR-1221-3

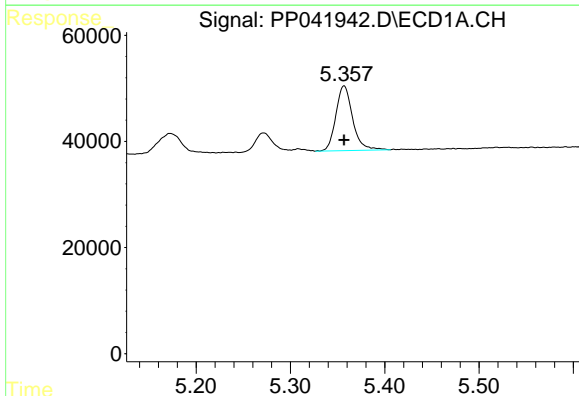
R.T.: 5.357 min
 Delta R.T.: 0.000 min
 Response: 151145
 Conc: 500.00 ng/ml

Instrument :
 ECD_P
 ClientSampleId :
 AR1221ICC500



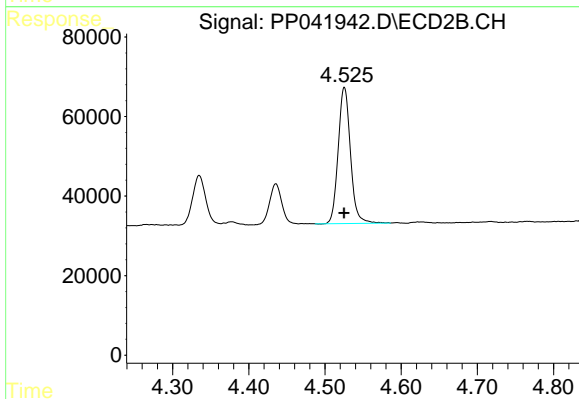
#10 AR-1221-3

R.T.: 4.525 min
 Delta R.T.: 0.000 min
 Response: 382103
 Conc: 500.00 ng/ml



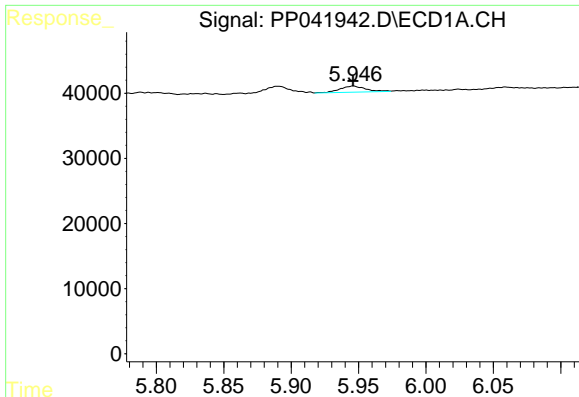
#11 AR-1232-1

R.T.: 5.357 min
 Delta R.T.: 0.000 min
 Response: 151145
 Conc: 629.63 ng/ml



#11 AR-1232-1

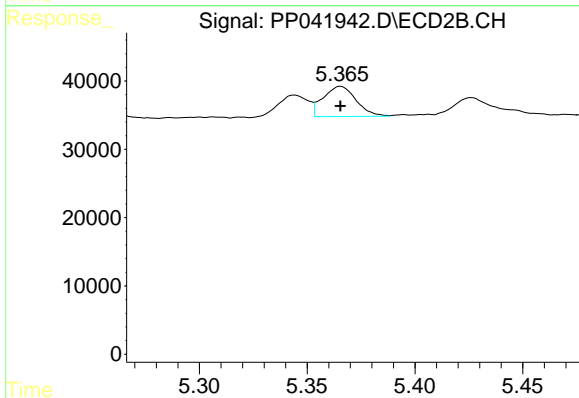
R.T.: 4.525 min
 Delta R.T.: 0.000 min
 Response: 382103
 Conc: 607.16 ng/ml



#12 AR-1232-2

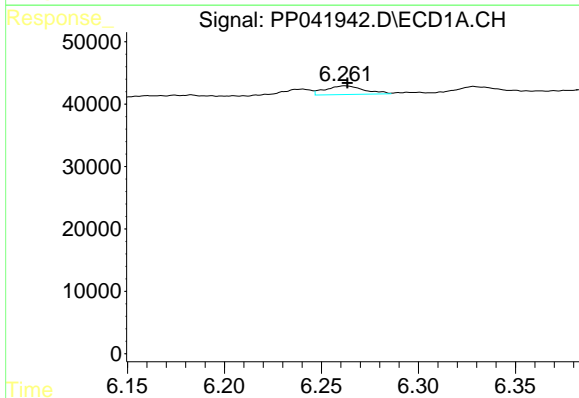
R.T.: 5.946 min
 Delta R.T.: 0.000 min
 Response: 12532
 Conc: 102.19 ng/ml

Instrument :
 ECD_P
 ClientSampleId :
 AR1221ICC500



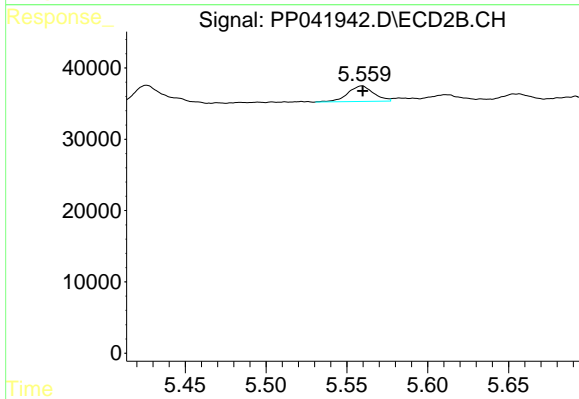
#12 AR-1232-2

R.T.: 5.365 min
 Delta R.T.: 0.000 min
 Response: 47044
 Conc: 84.71 ng/ml



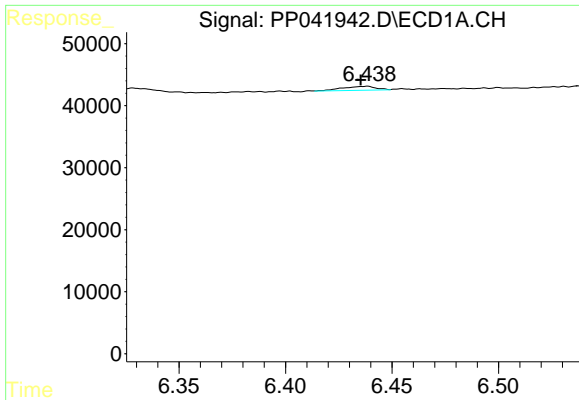
#13 AR-1232-3

R.T.: 6.262 min
 Delta R.T.: -0.001 min
 Response: 19147
 Conc: 86.48 ng/ml



#13 AR-1232-3

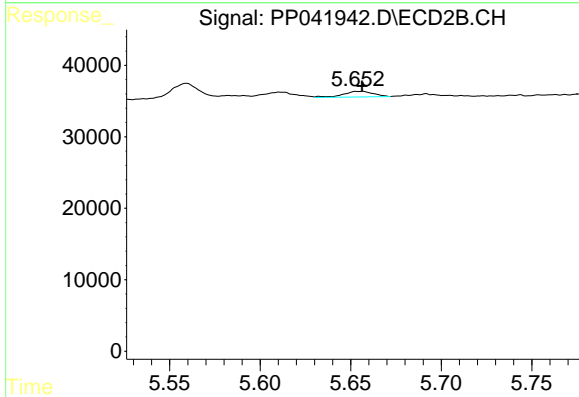
R.T.: 5.559 min
 Delta R.T.: 0.000 min
 Response: 24361
 Conc: 81.72 ng/ml



#14 AR-1232-4

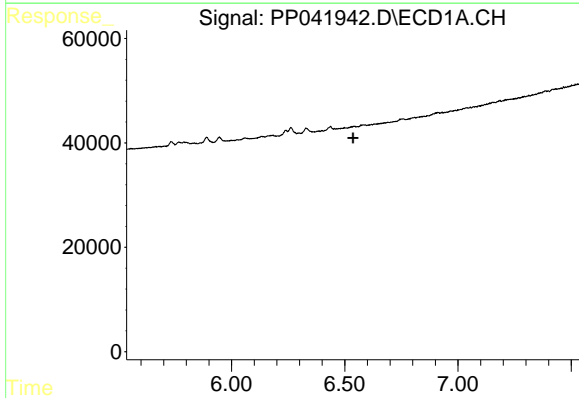
R.T.: 6.439 min
 Delta R.T.: 0.003 min
 Response: 7284
 Conc: 66.88 ng/ml

Instrument :
 ECD_P
 ClientSampleId :
 AR1221ICC500



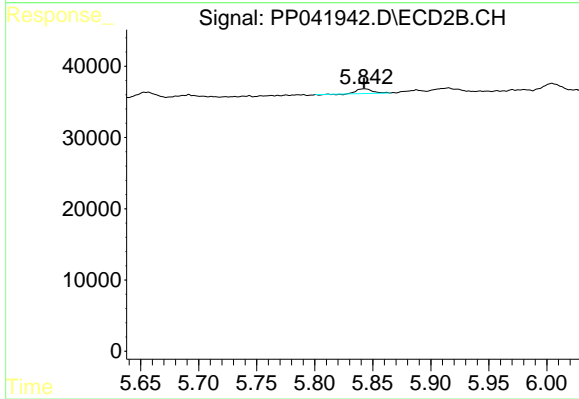
#14 AR-1232-4

R.T.: 5.656 min
 Delta R.T.: 0.000 min
 Response: 9038
 Conc: 36.85 ng/ml



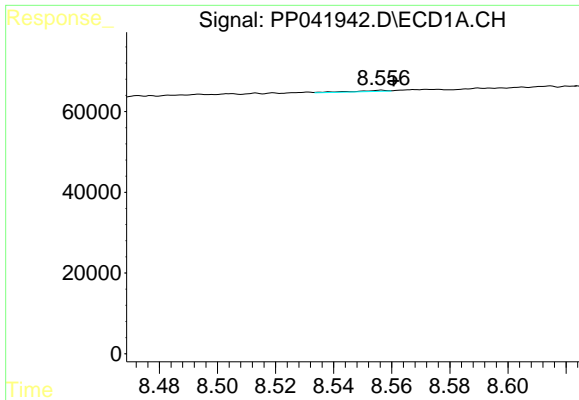
#15 AR-1232-5

R.T.: 0.000 min
 Exp R.T. : 6.536 min
 Response: 0
 Conc: N.D.



#15 AR-1232-5

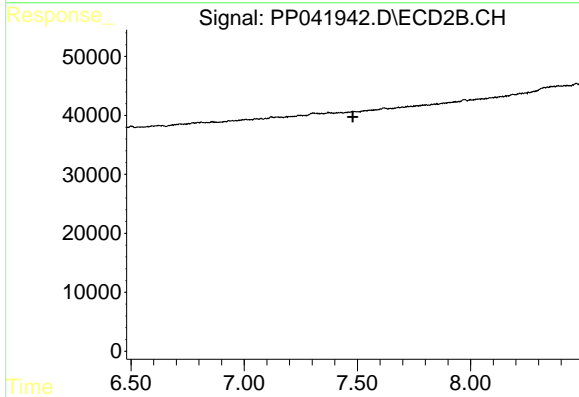
R.T.: 5.843 min
 Delta R.T.: 0.000 min
 Response: 6170
 Conc: 24.06 ng/ml



#36 AR-1262-1

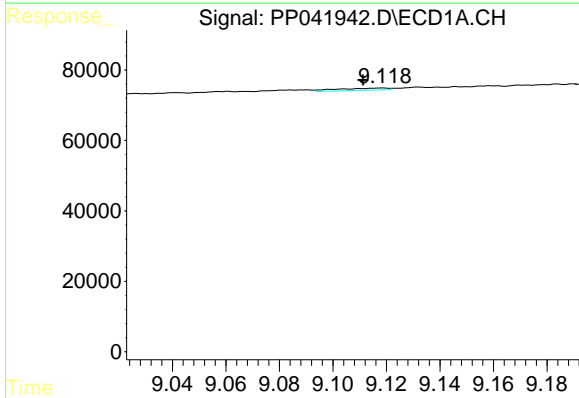
R.T.: 8.557 min
 Delta R.T.: -0.004 min
 Response: 2157
 Conc: 3.56 ng/ml

Instrument :
 ECD_P
 ClientSampleId :
 AR1221ICC500



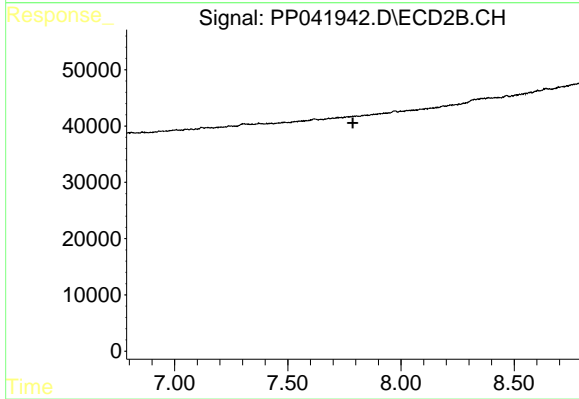
#36 AR-1262-1

R.T.: 0.000 min
 Exp R.T. : 7.480 min
 Response: 0
 Conc: N.D.



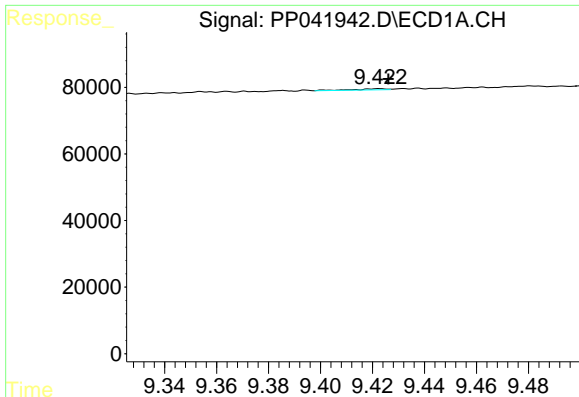
#37 AR-1262-2

R.T.: 9.119 min
 Delta R.T.: 0.007 min
 Response: 8010
 Conc: 7.46 ng/ml



#37 AR-1262-2

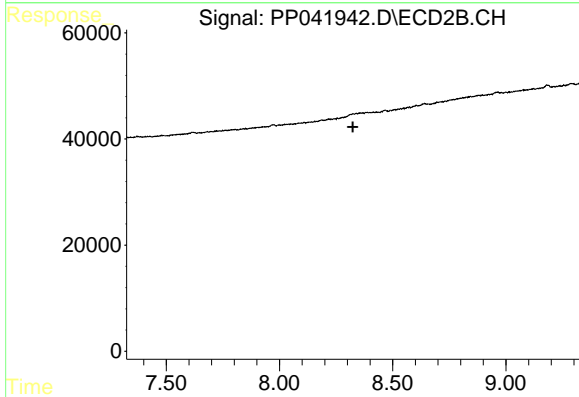
R.T.: 0.000 min
 Exp R.T. : 7.787 min
 Response: 0
 Conc: N.D.



#38 AR-1262-3

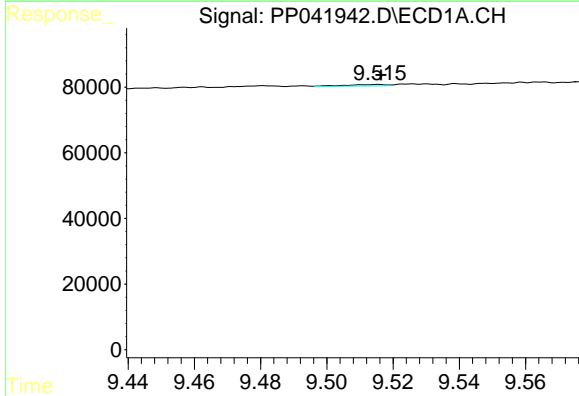
R.T.: 9.423 min
 Delta R.T.: -0.003 min
 Response: 2908
 Conc: 5.56 ng/ml

Instrument :
 ECD_P
 ClientSampleId :
 AR1221ICC500



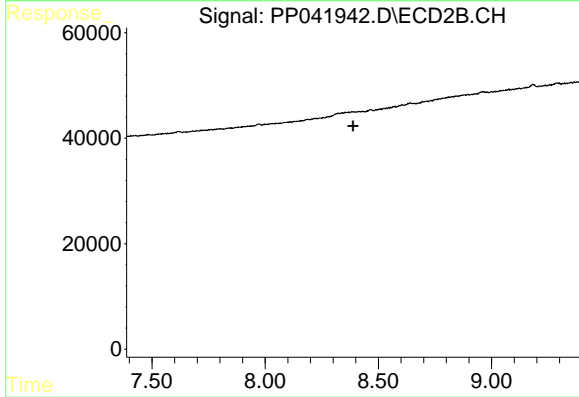
#38 AR-1262-3

R.T.: 0.000 min
 Exp R.T. : 8.324 min
 Response: 0
 Conc: N.D.



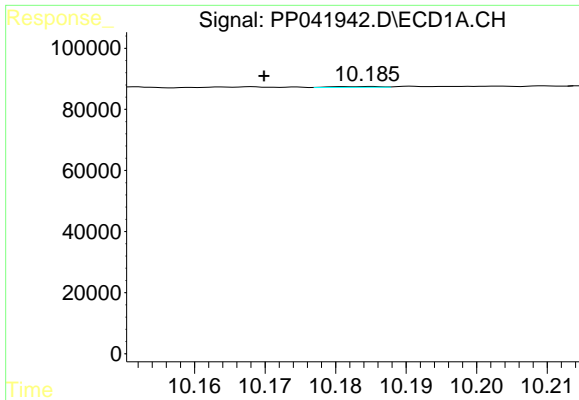
#39 AR-1262-4

R.T.: 9.515 min
 Delta R.T.: 0.000 min
 Response: 3949
 Conc: 11.43 ng/ml



#39 AR-1262-4

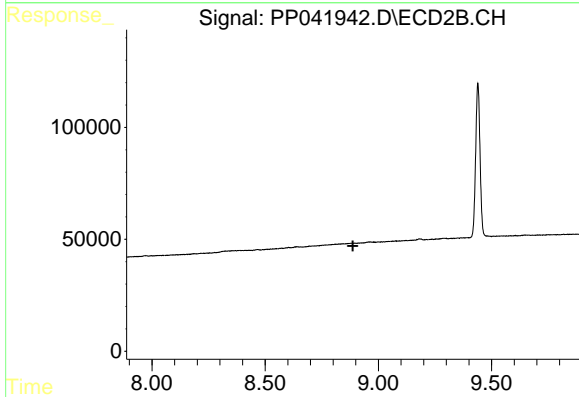
R.T.: 0.000 min
 Exp R.T. : 8.388 min
 Response: 0
 Conc: N.D.



#40 AR-1262-5

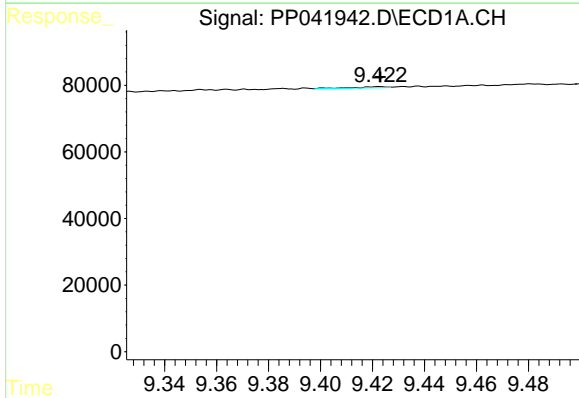
R.T.: 10.185 min
 Delta R.T.: 0.015 min
 Response: 1281
 Conc: 3.22 ng/ml

Instrument :
 ECD_P
 ClientSampleId :
 AR1221ICC500



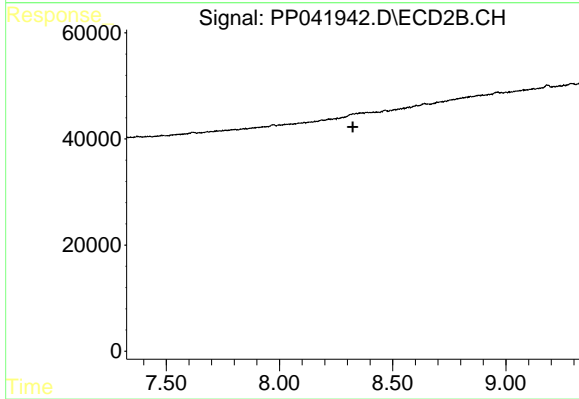
#40 AR-1262-5

R.T.: 0.000 min
 Exp R.T. : 8.887 min
 Response: 0
 Conc: N.D.



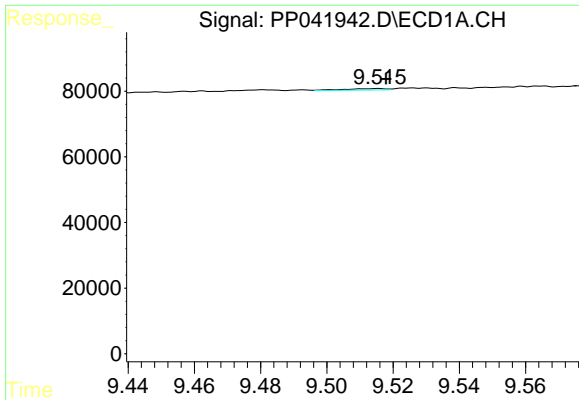
#41 AR-1268-1

R.T.: 9.423 min
 Delta R.T.: 0.000 min
 Response: 2908
 Conc: 2.24 ng/ml



#41 AR-1268-1

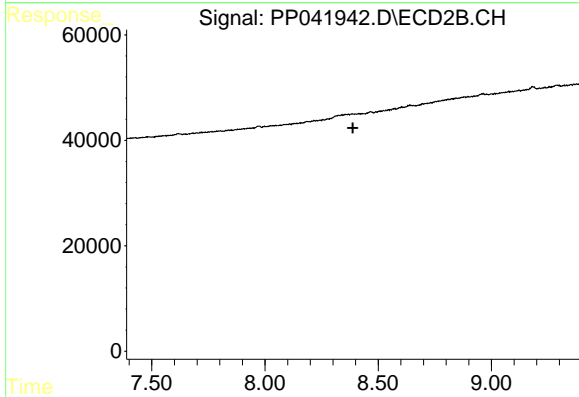
R.T.: 0.000 min
 Exp R.T. : 8.324 min
 Response: 0
 Conc: N.D.



#42 AR-1268-2

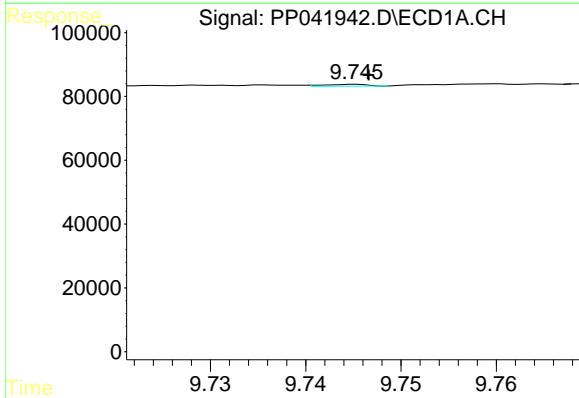
R.T.: 9.515 min
 Delta R.T.: -0.002 min
 Response: 3949
 Conc: 3.09 ng/ml

Instrument :
 ECD_P
 ClientSampleId :
 AR1221ICC500



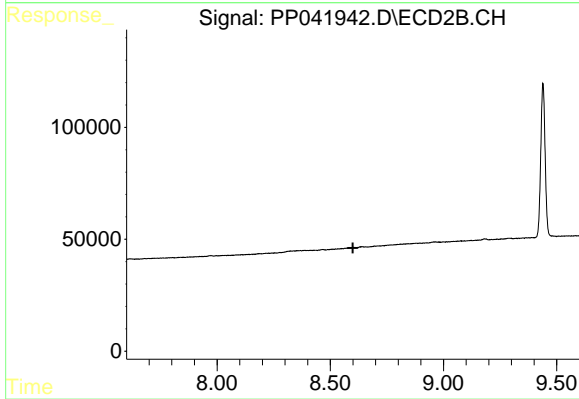
#42 AR-1268-2

R.T.: 0.000 min
 Exp R.T. : 8.388 min
 Response: 0
 Conc: N.D.



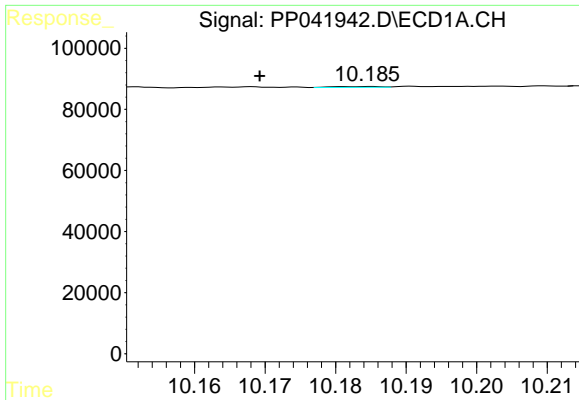
#43 AR-1268-3

R.T.: 9.745 min
 Delta R.T.: -0.001 min
 Response: 1877
 Conc: 1.71 ng/ml



#43 AR-1268-3

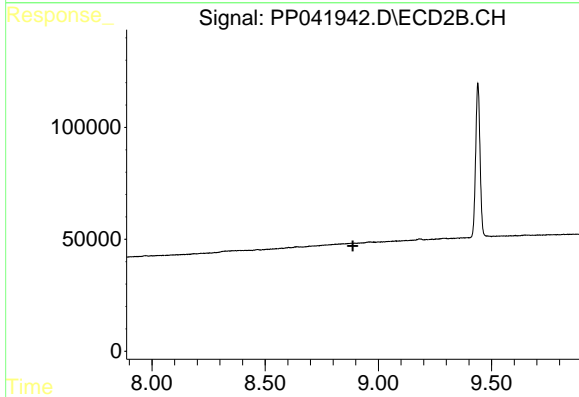
R.T.: 0.000 min
 Exp R.T. : 8.600 min
 Response: 0
 Conc: N.D.



#44 AR-1268-4

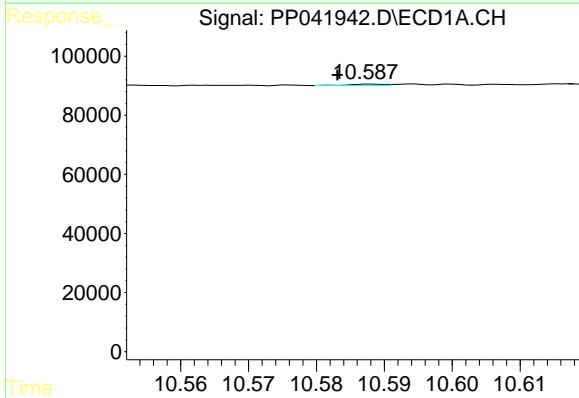
R.T.: 10.185 min
 Delta R.T.: 0.016 min
 Response: 1281
 Conc: 2.97 ng/ml

Instrument :
 ECD_P
 ClientSampleId :
 AR1221ICC500



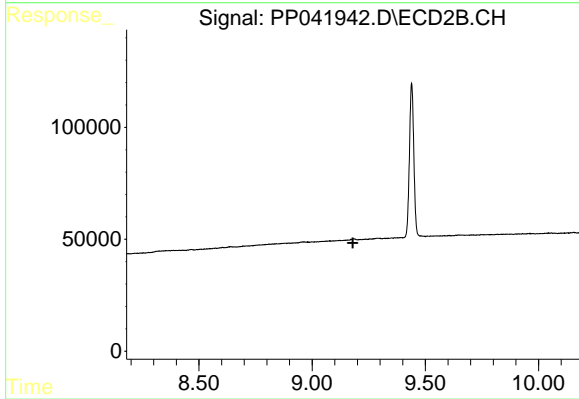
#44 AR-1268-4

R.T.: 0.000 min
 Exp R.T. : 8.887 min
 Response: 0
 Conc: N.D.



#45 AR-1268-5

R.T.: 10.588 min
 Delta R.T.: 0.005 min
 Response: 1548
 Conc: 0.43 ng/ml



#45 AR-1268-5

R.T.: 0.000 min
 Exp R.T. : 9.180 min
 Response: 0
 Conc: N.D.