

Data Path : Z:\pestpcbsrv\HPCHEM1\ECD\_P\Data\PP121323\  
 Data File : PP062455.D  
 Signal(s) : Signal #1: ECD1A.ch Signal #2: ECD2B.ch  
 Acq On : 13 Dec 2023 10:30  
 Operator : YP\AJ  
 Sample : I.BLK  
 Misc :  
 ALS Vial : 2 Sample Multiplier: 1

**Instrument :**  
 ECD\_P  
**ClientSampleId :**  
 I.BLK

**Manual Integrations**  
**APPROVED**

Reviewed By :Yogesh Patel 12/14/2023  
 Supervised By :Ankita Jodhani 12/14/2023

Integration File signal 1: autoint1.e  
 Integration File signal 2: autoint2.e  
 Quant Time: Dec 13 12:30:08 2023  
 Quant Method : Z:\pestpcbsrv\HPCHEM1\ECD\_P\methods\PP121123.M  
 Quant Title : GC EXTRACTABLES  
 QLast Update : Tue Dec 12 05:13:02 2023  
 Response via : Initial Calibration  
 Integrator: ChemStation

Volume Inj. : 2 µl  
 Signal #1 Phase : ZB-MR1 Signal #2 Phase: ZB-MR2  
 Signal #1 Info : 30Mx0.32mmx 0.50µ Signal #2 Info : 30M x 0.32mm x 0.25µm

Compound	RT#1	RT#2	Resp#1	Resp#2	ng/ml	ng/ml
-----						
System Monitoring Compounds						
1) SA Tetrachlo...	4.432	3.717	30815441	50551840	18.370	16.473
2) SA Decachlor...	10.202	8.830	24310290	46565873	23.263	20.220m

Target Compounds

(f)=RT Delta > 1/2 Window (#)=Amounts differ by > 25% (m)=manual int.

Data Path : Z:\pestpcbsrv\HPCHEM1\ECD\_P\Data\PP121323\  
 Data File : PP062455.D  
 Signal(s) : Signal #1: ECD1A.ch Signal #2: ECD2B.ch  
 Acq On : 13 Dec 2023 10:30  
 Operator : YP\AJ  
 Sample : I.BLK  
 Misc :  
 ALS Vial : 2 Sample Multiplier: 1

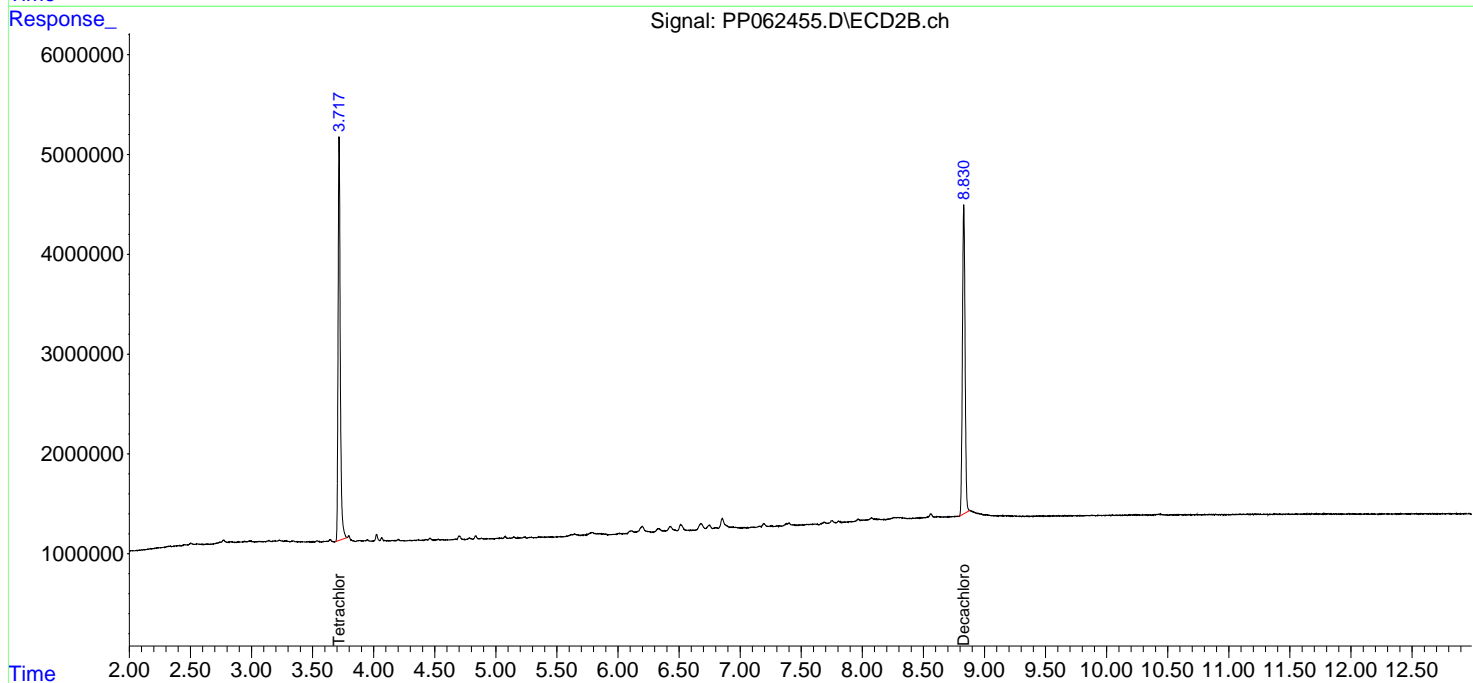
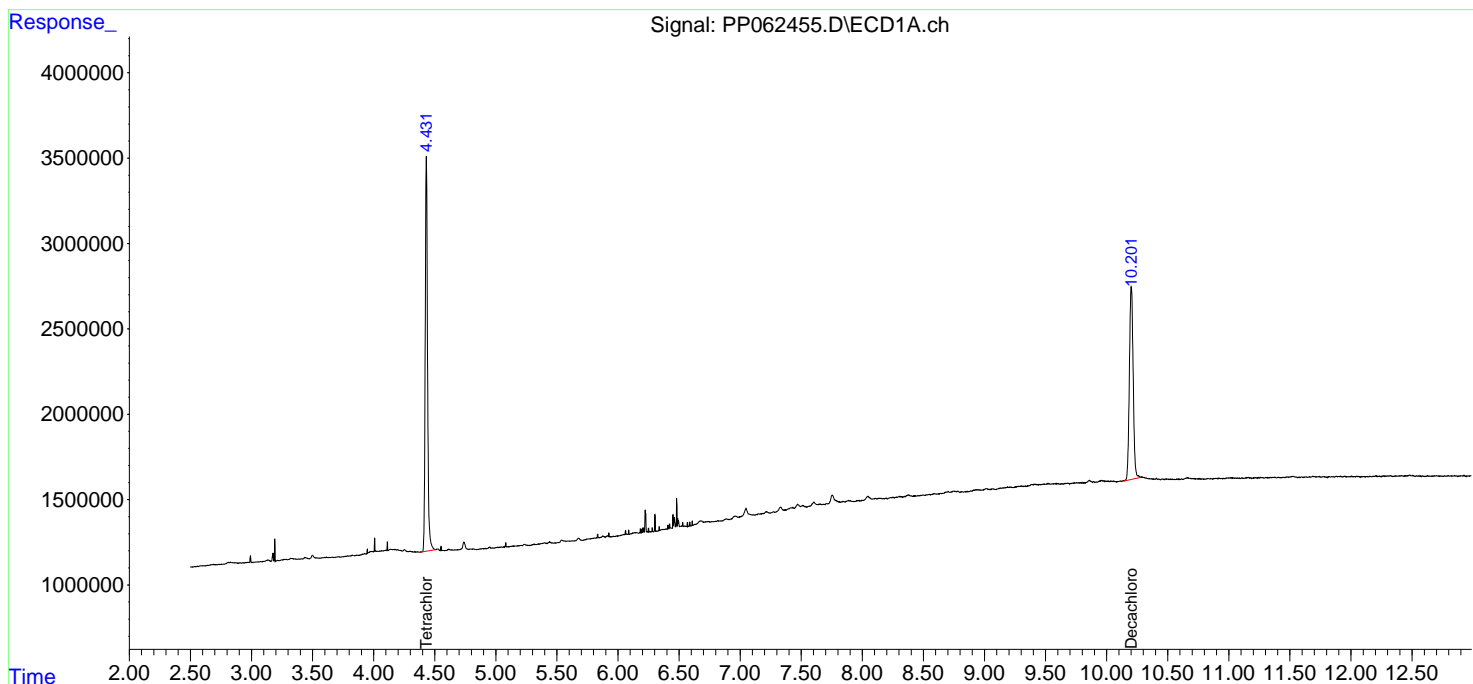
**Instrument :**  
 ECD\_P  
**ClientSampleID :**  
 I.BLK

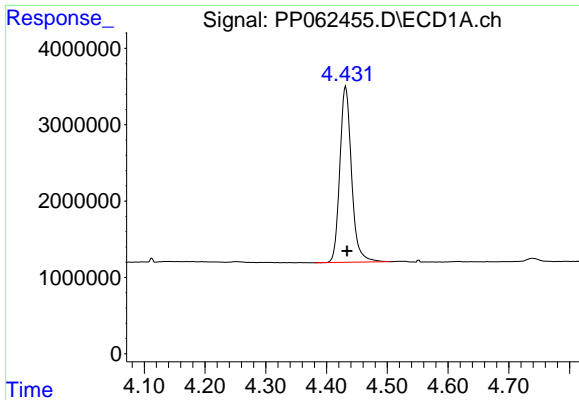
**Manual Integrations**  
**APPROVED**

Reviewed By :Yogesh Patel 12/14/2023  
 Supervised By :Ankita Jodhani 12/14/2023

Integration File signal 1: autoint1.e  
 Integration File signal 2: autoint2.e  
 Quant Time: Dec 13 12:30:08 2023  
 Quant Method : Z:\pestpcbsrv\HPCHEM1\ECD\_P\methods\PP121123.M  
 Quant Title : GC EXTRACTABLES  
 QLast Update : Tue Dec 12 05:13:02 2023  
 Response via : Initial Calibration  
 Integrator: ChemStation

Volume Inj. : 2 µl  
 Signal #1 Phase : ZB-MR1 Signal #2 Phase: ZB-MR2  
 Signal #1 Info : 30Mx0.32mmx 0.50µ Signal #2 Info : 30M x 0.32mm x 0.25µm



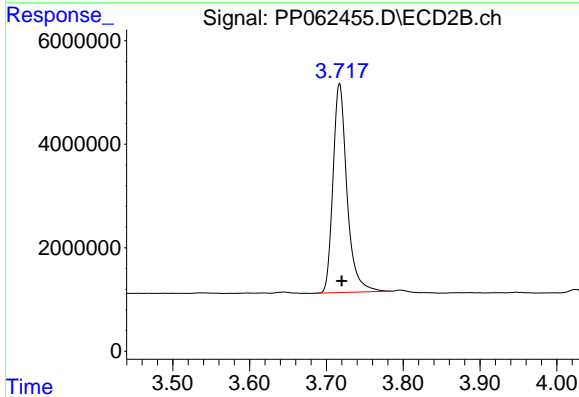


#1 Tetrachloro-m-xylene  
 R.T.: 4.432 min  
 Delta R.T.: -0.002 min  
 Response: 30815441  
 Conc: 18.37 ng/ml

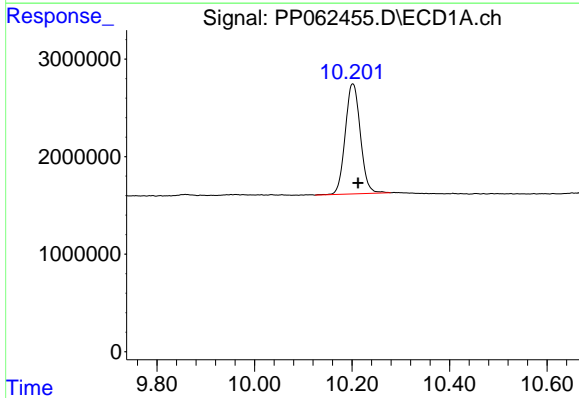
Instrument :  
 ECD\_P  
 ClientSampleId :  
 I.BLK

Manual Integrations  
 APPROVED

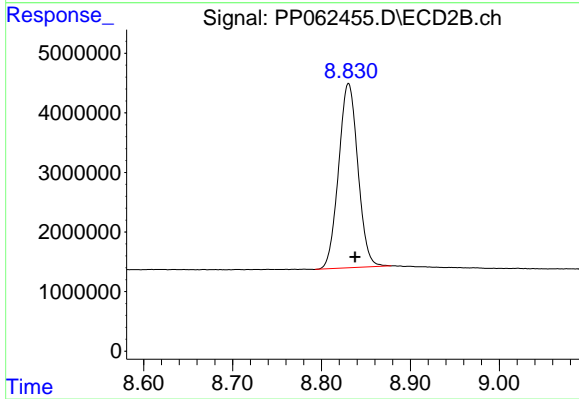
Reviewed By :Yogesh Patel 12/14/2023  
 Supervised By :Ankita Jodhani 12/14/2023



#1 Tetrachloro-m-xylene  
 R.T.: 3.717 min  
 Delta R.T.: -0.003 min  
 Response: 50551840  
 Conc: 16.47 ng/ml



#2 Decachlorobiphenyl  
 R.T.: 10.202 min  
 Delta R.T.: -0.011 min  
 Response: 24310290  
 Conc: 23.26 ng/ml



#2 Decachlorobiphenyl  
 R.T.: 8.830 min  
 Delta R.T.: -0.008 min  
 Response: 46565873  
 Conc: 20.22 ng/ml m