

Data Path : Z:\pestpcbsrv\HPCHEM1\ECD_P\Data\PP121520\
 Data File : PP032140.D
 Signal(s) : Signal #1: ECD1A.CH Signal #2: ECD2B.CH
 Acq On : 15 Dec 2020 11:09
 Operator : DD\AJ
 Sample : L5081-19
 Misc :
 ALS Vial : 13 Sample Multiplier: 1

Instrument :
 ECD_P
Client Sample Id :
 WOOSPK-035-0002

Integration File signal 1: autoint1.e
 Integration File signal 2: autoint2.e
 Quant Time: Dec 16 04:31:18 2020
 Quant Method : Z:\pestpcbsrv\HPCHEM1\ECD_P\methods\PP121120.M
 Quant Title : GC EXTRACTABLES
 QLast Update : Sat Dec 12 05:15:55 2020
 Response via : Initial Calibration
 Integrator: ChemStation 6890 Scale Mode: Small noise peaks clipped

Volume Inj. : 2 µl
 Signal #1 Phase : ZB-MR1 Signal #2 Phase: ZB-MR2
 Signal #1 Info : 30Mx0.32mmx 0.50µ Signal #2 Info : 30M x 0.32mm x 0.25µm

Compound	RT#1	RT#2	Resp#1	Resp#2	ng/ml	ng/ml
System Monitoring Compounds						
1) SA Tetrachlo...	4.778	4.050	725453	850080	14.083	17.973 #
2) SA Decachlor...	10.639	9.340	806050	743585	25.704	22.173
Target Compounds						
3) L1 AR-1016-1	6.102f	5.325f	179656	80926	123.174	61.911 #
4) L1 AR-1016-2	6.102	5.325	179656	80926	79.982	40.874 #
5) L1 AR-1016-3	6.162	5.505	105903	24431	76.622	22.846 #
6) L1 AR-1016-4	0.000	5.561	0	47714	N.D.	56.233 #
7) L1 AR-1016-5	0.000	5.794	0	105201	N.D.	96.815 #
9) L2 AR-1221-2	0.000	4.379f	0	11393	N.D.	31.660 #
12) L3 AR-1232-2	0.000	5.325	0	80926	N.D.	94.316 #
13) L3 AR-1232-3	6.102	5.505	179656	24431	186.853	53.806 #
14) L3 AR-1232-4	0.000	5.622	0	39610	N.D.	100.962 #
15) L3 AR-1232-5	6.373	5.794	40133	105201	131.846	243.222 #
16) L4 AR-1242-1	6.102f	5.325f	179656	80926	156.799	78.130 #
17) L4 AR-1242-2	6.102	5.325	179656	80926	101.999	52.355 #
18) L4 AR-1242-3	6.162	5.505	105903	24431	95.431	29.016 #
19) L4 AR-1242-4	6.242f	5.622	112412	39610	123.524	48.835 #
20) L4 AR-1242-5	7.074f	6.172	218135	232413	251.487	261.335
21) L5 AR-1248-1	6.102f	5.325f	179656	80926	206.412	103.424 #
22) L5 AR-1248-2	6.373	5.561	40133	47714	33.881	41.299
23) L5 AR-1248-3	0.000	5.622	0	39610	N.D.	32.427 #
24) L5 AR-1248-4	7.017	5.794	213326	105201	149.117	71.743 #
25) L5 AR-1248-5	7.074f	6.214	218135	101561	147.003	80.949 #
26) L6 AR-1254-1	6.994	6.172	72232	232413	46.504	112.438 #
27) L6 AR-1254-2	7.214	6.321	305613	73470	132.859	40.983 #
28) L6 AR-1254-3	7.603	6.763	401663	210839	164.959	73.771 #
29) L6 AR-1254-4	7.887	6.994	171759	48161	111.589	34.850 #
30) L6 AR-1254-5	8.313	7.415	114577	431949	66.853	181.566 #
31) L7 AR-1260-1	7.758	6.886	147035	80479	84.840	42.450 #
32) L7 AR-1260-2	8.020	7.082	405356	54449	197.293	25.030 #
33) L7 AR-1260-3	8.391	7.235	90539	27639	51.886	13.008 #
34) L7 AR-1260-4	8.630	7.718	1136467	60699	630.668	34.166 #
35) L7 AR-1260-5	8.929	7.964	146816	158838	40.840	41.521
36) L8 AR-1262-1	8.391	7.456	90539	50915	33.554	18.945 #
37) L8 AR-1262-2	8.929	7.964	146816	158838	36.204	38.094
38) L8 AR-1262-3	9.229	8.251	73914	59036	25.794	32.586 #
39) L8 AR-1262-4	9.319	8.315	141515	152518	58.050	45.334
40) L8 AR-1262-5	0.000	8.810	0	66276	N.D.	50.587 #
41) L9 AR-1268-1	9.229	8.251	73914	59036	14.224	11.714
42) L9 AR-1268-2	9.319	8.315	141515	152518	29.073	29.830
43) L9 AR-1268-3	9.531	8.527	351083	29510	81.242	6.693 #
44) L9 AR-1268-4	0.000	8.810	0	66276	N.D.	45.350 #
45) L9 AR-1268-5	10.327	9.095	91968	66661	7.636	5.271 #

Data Path : Z:\pestpcbsrv\HPCHEM1\ECD_P\Data\PP121520\
Data File : PP032140.D
Signal(s) : Signal #1: ECD1A.CH Signal #2: ECD2B.CH
Acq On : 15 Dec 2020 11:09
Operator : DD\AJ
Sample : L5081-19
Misc :
ALS Vial : 13 Sample Multiplier: 1

Instrument :
ECD_P
ClientSampleId :
WOOSPK-035-0002

Integration File signal 1: autoint1.e
Integration File signal 2: autoint2.e
Quant Time: Dec 16 04:31:18 2020
Quant Method : Z:\pestpcbsrv\HPCHEM1\ECD_P\methods\PP121120.M
Quant Title : GC EXTRACTABLES
QLast Update : Sat Dec 12 05:15:55 2020
Response via : Initial Calibration
Integrator: ChemStation 6890 Scale Mode: Small noise peaks clipped

Volume Inj. : 2 µl
Signal #1 Phase : ZB-MR1 Signal #2 Phase: ZB-MR2
Signal #1 Info : 30Mx0.32mmx 0.50µ Signal #2 Info : 30M x 0.32mm x 0.25µm

Compound	RT#1	RT#2	Resp#1	Resp#2	ng/ml	ng/ml
----------	------	------	--------	--------	-------	-------

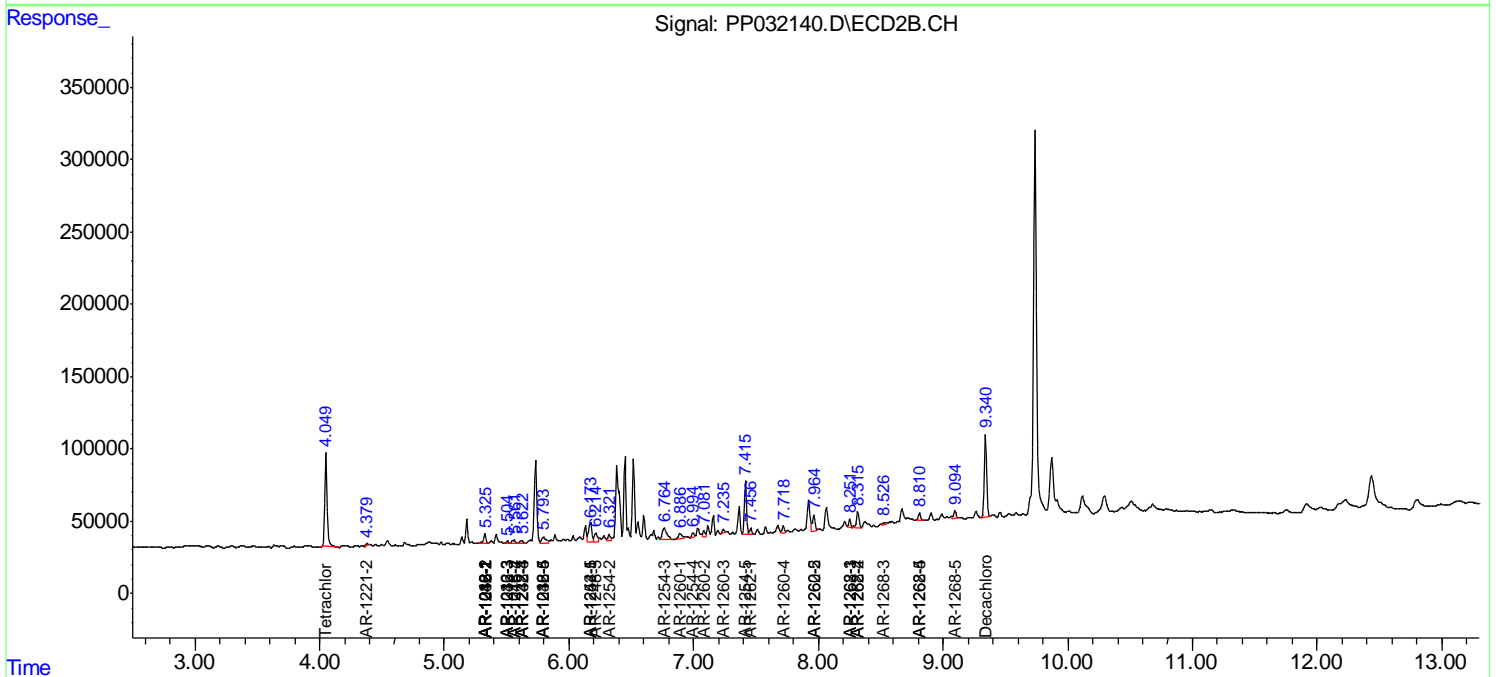
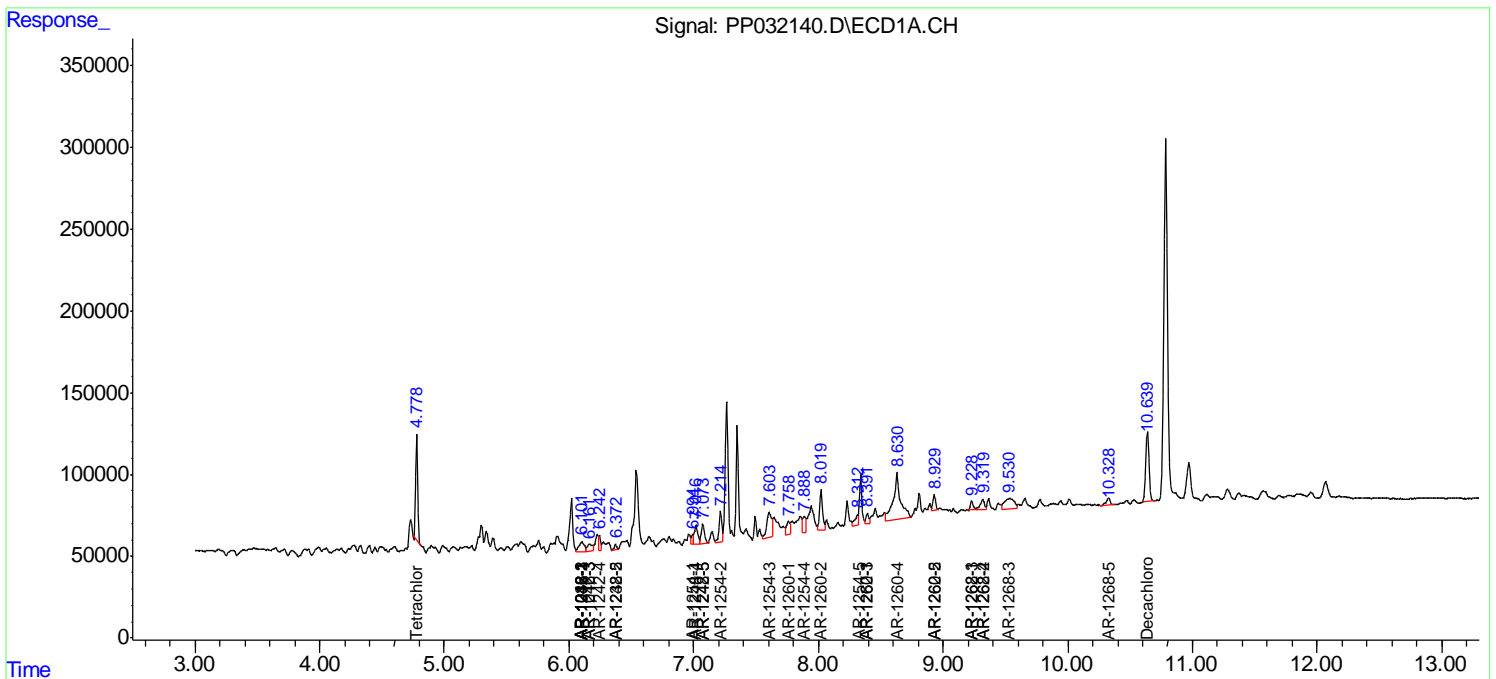
(f)=RT Delta > 1/2 Window (#)=Amounts differ by > 25% (m)=manual int.

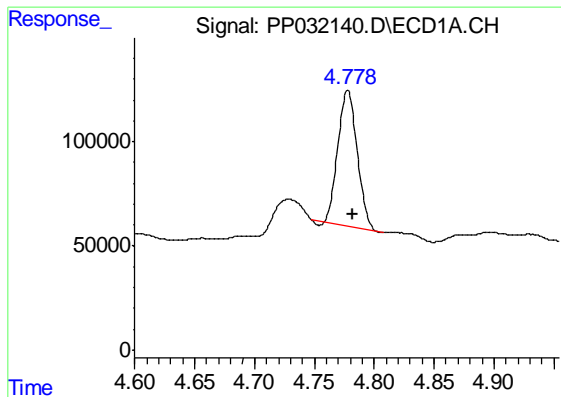
Data Path : Z:\pestpcbsrv\HPCHEM1\ECD_P\Data\PP121520\
Data File : PP032140.D
Signal(s) : Signal #1: ECD1A.CH Signal #2: ECD2B.CH
Acq On : 15 Dec 2020 11:09
Operator : DD\AJ
Sample : L5081-19
Misc :
ALS Vial : 13 Sample Multiplier: 1

Instrument :
ECD_P
Client Sampled :
WOOSPK-035-0002

Integration File signal 1: autoint1.e
Integration File signal 2: autoint2.e
Quant Time: Dec 16 04:31:18 2020
Quant Method : Z:\pestpcbsrv\HPCHEM1\ECD_P\methods\PP121120.M
Quant Title : GC EXTRACTABLES
QLast Update : Sat Dec 12 05:15:55 2020
Response via : Initial Calibration
Integrator: ChemStation 6890 Scale Mode: Small noise peaks clipped

Volume Inj. : 2 µl
Signal #1 Phase : ZB-MR1 Signal #2 Phase: ZB-MR2
Signal #1 Info : 30Mx0.32mmx 0.50µ Signal #2 Info : 30M x 0.32mm x 0.25µm

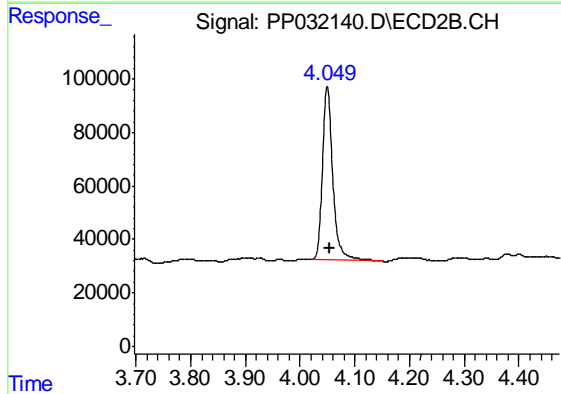




#1 Tetrachloro-m-xylene

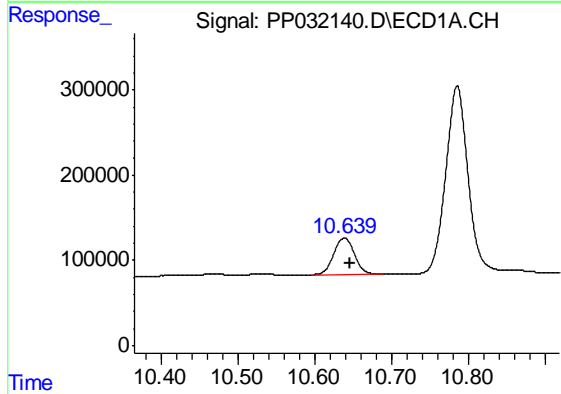
R.T.: 4.778 min
 Delta R.T.: -0.004 min
 Response: 725453
 Conc: 14.08 ng/ml

Instrument :
 ECD_P
 ClientSampleId :
 WOOSPK-035-0002



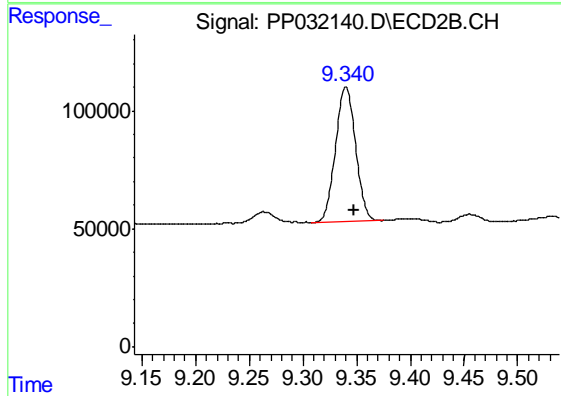
#1 Tetrachloro-m-xylene

R.T.: 4.050 min
 Delta R.T.: -0.004 min
 Response: 850080
 Conc: 17.97 ng/ml



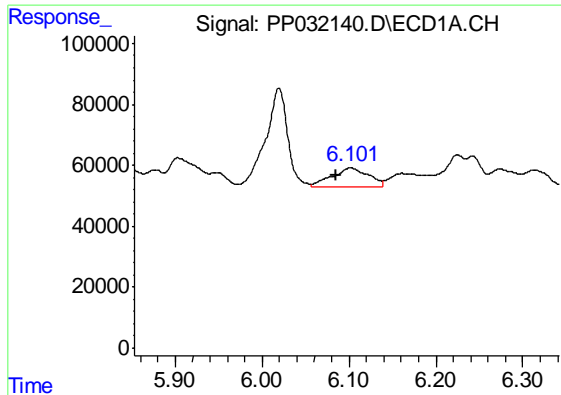
#2 Decachlorobiphenyl

R.T.: 10.639 min
 Delta R.T.: -0.008 min
 Response: 806050
 Conc: 25.70 ng/ml



#2 Decachlorobiphenyl

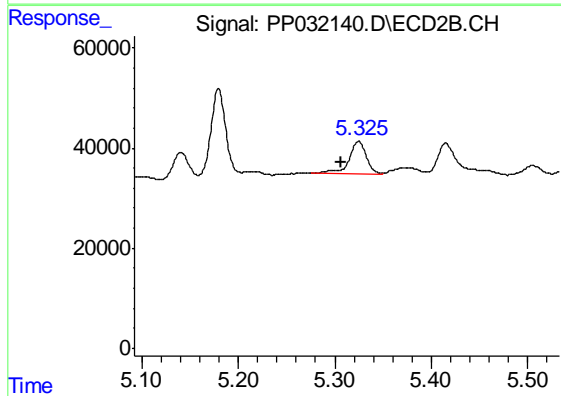
R.T.: 9.340 min
 Delta R.T.: -0.008 min
 Response: 743585
 Conc: 22.17 ng/ml



#3 AR-1016-1

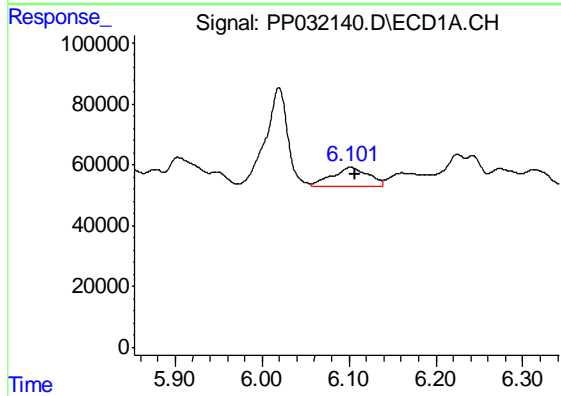
R.T.: 6.102 min
 Delta R.T.: 0.017 min
 Response: 179656
 Conc: 123.17 ng/ml

Instrument :
 ECD_P
 ClientSampleId :
 WOOSPK-035-0002



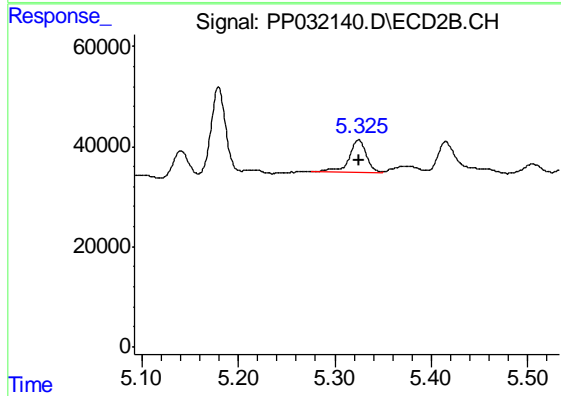
#3 AR-1016-1

R.T.: 5.325 min
 Delta R.T.: 0.019 min
 Response: 80926
 Conc: 61.91 ng/ml



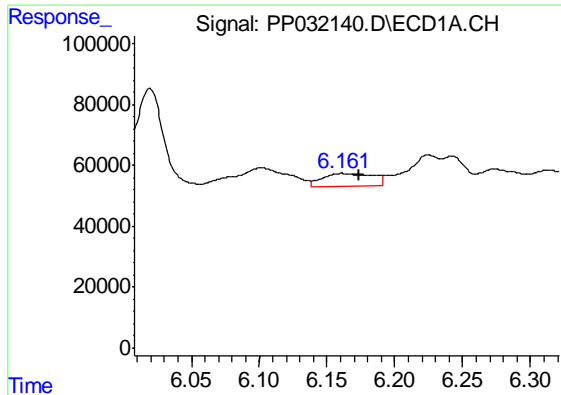
#4 AR-1016-2

R.T.: 6.102 min
 Delta R.T.: -0.006 min
 Response: 179656
 Conc: 79.98 ng/ml



#4 AR-1016-2

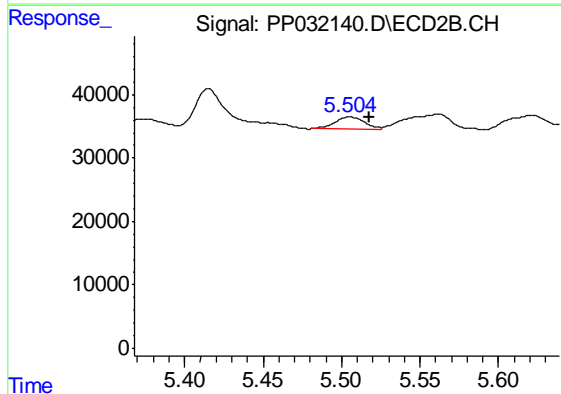
R.T.: 5.325 min
 Delta R.T.: 0.000 min
 Response: 80926
 Conc: 40.87 ng/ml



#5 AR-1016-3

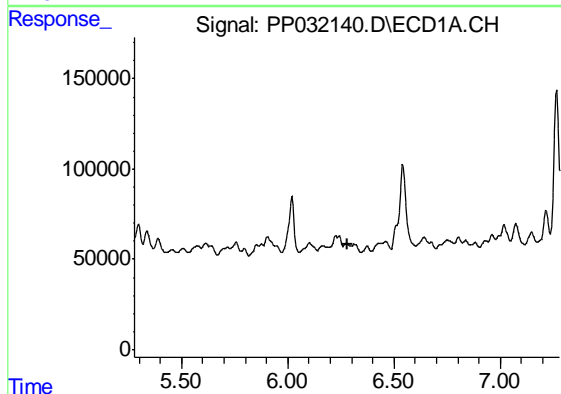
R.T.: 6.162 min
 Delta R.T.: -0.012 min
 Response: 105903
 Conc: 76.62 ng/ml

Instrument :
 ECD_P
 ClientSampleId :
 WOOSPK-035-0002



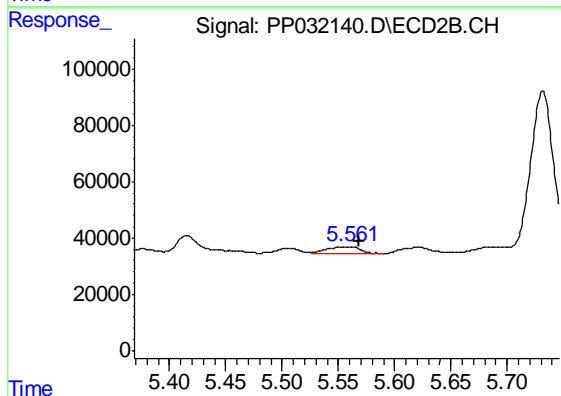
#5 AR-1016-3

R.T.: 5.505 min
 Delta R.T.: -0.013 min
 Response: 24431
 Conc: 22.85 ng/ml



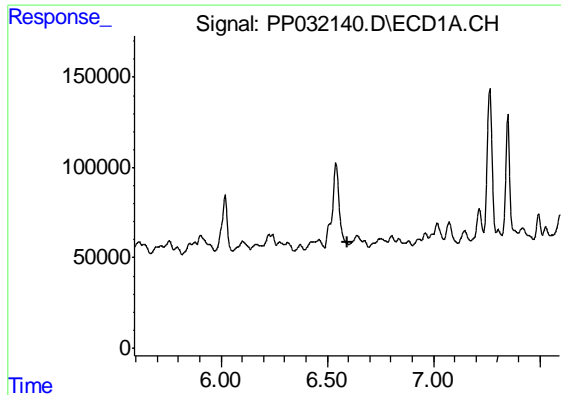
#6 AR-1016-4

R.T.: 0.000 min
 Exp R.T. : 6.279 min
 Response: 0
 Conc: N.D.



#6 AR-1016-4

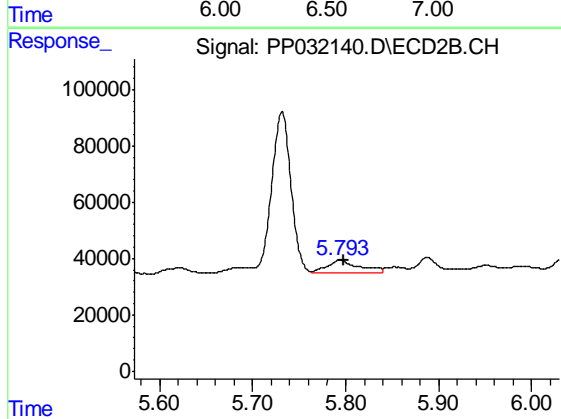
R.T.: 5.561 min
 Delta R.T.: -0.007 min
 Response: 47714
 Conc: 56.23 ng/ml



#7 AR-1016-5

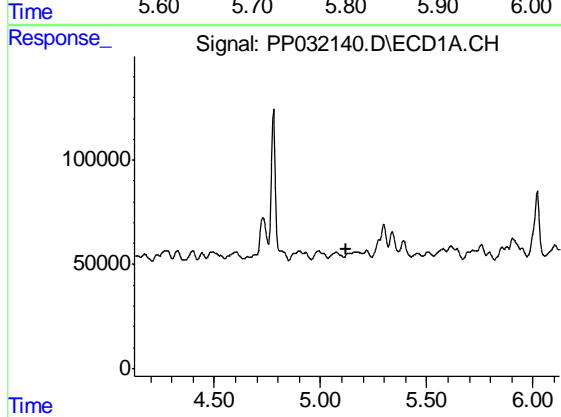
R.T.: 0.000 min
 Exp R.T. : 6.593 min
 Response: 0
 Conc: N.D.

Instrument :
 ECD_P
 ClientSampleId :
 WOOSPK-035-0002



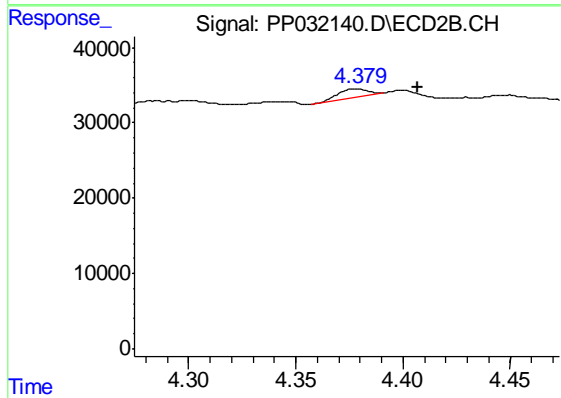
#7 AR-1016-5

R.T.: 5.794 min
 Delta R.T.: -0.004 min
 Response: 105201
 Conc: 96.82 ng/ml



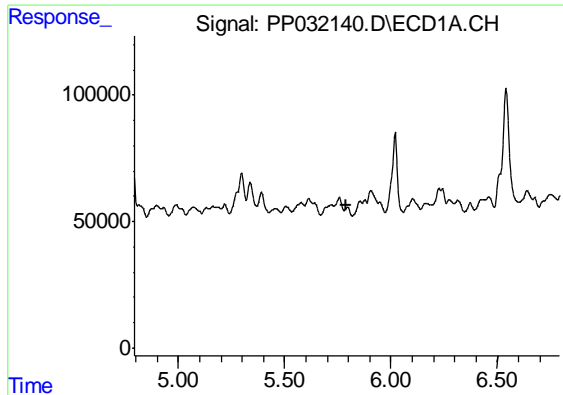
#9 AR-1221-2

R.T.: 0.000 min
 Exp R.T. : 5.124 min
 Response: 0
 Conc: N.D.



#9 AR-1221-2

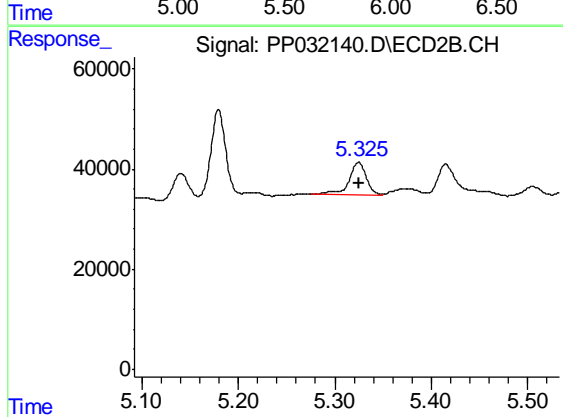
R.T.: 4.379 min
 Delta R.T.: -0.028 min
 Response: 11393
 Conc: 31.66 ng/ml



#12 AR-1232-2

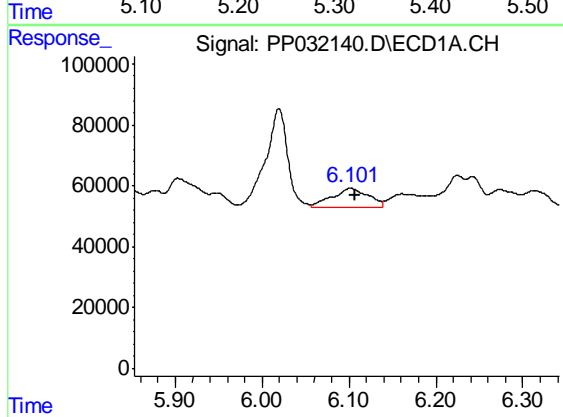
R.T.: 0.000 min
 Exp R.T. : 5.792 min
 Response: 0
 Conc: N.D.

Instrument :
 ECD_P
ClientSampleId :
 WOOSPK-035-0002



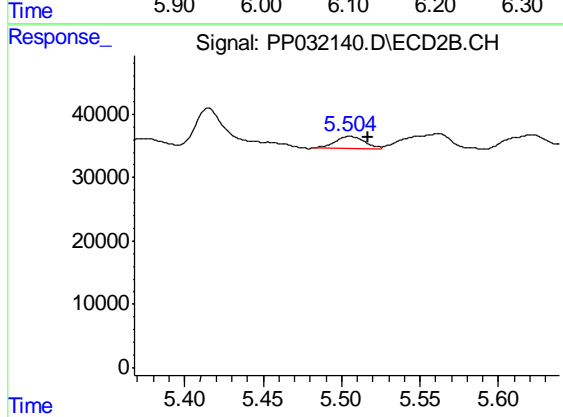
#12 AR-1232-2

R.T.: 5.325 min
 Delta R.T.: 0.000 min
 Response: 80926
 Conc: 94.32 ng/ml



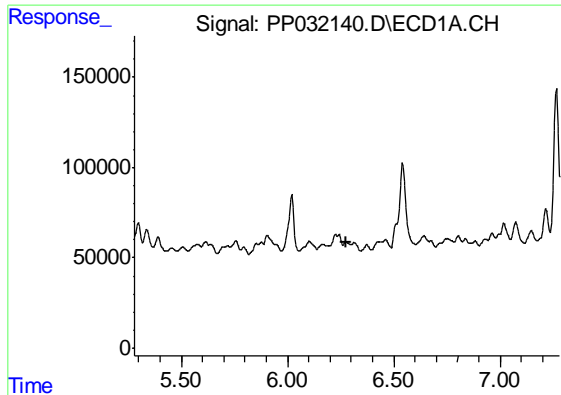
#13 AR-1232-3

R.T.: 6.102 min
 Delta R.T.: -0.006 min
 Response: 179656
 Conc: 186.85 ng/ml



#13 AR-1232-3

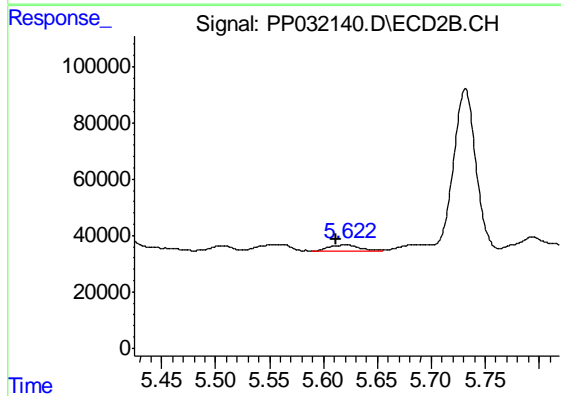
R.T.: 5.505 min
 Delta R.T.: -0.012 min
 Response: 24431
 Conc: 53.81 ng/ml



#14 AR-1232-4

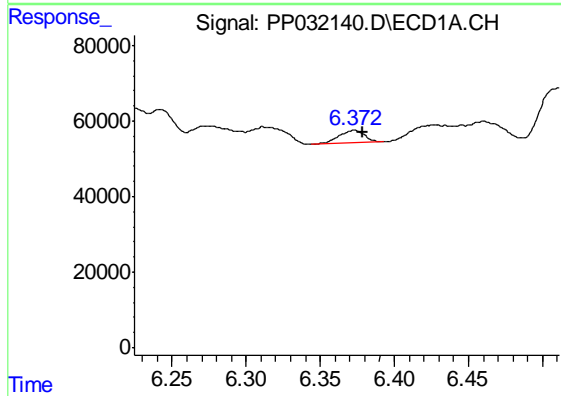
R.T.: 0.000 min
 Exp R.T. : 6.279 min
 Response: 0
 Conc: N.D.

Instrument :
 ECD_P
 ClientSampleId :
 WOOSPK-035-0002



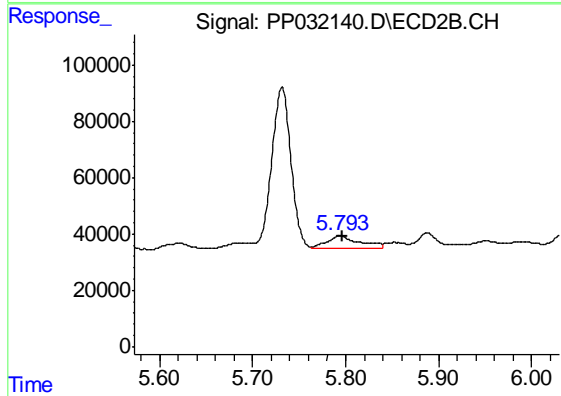
#14 AR-1232-4

R.T.: 5.622 min
 Delta R.T.: 0.011 min
 Response: 39610
 Conc: 100.96 ng/ml



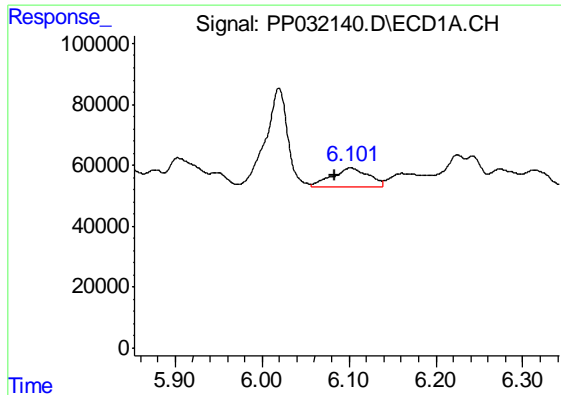
#15 AR-1232-5

R.T.: 6.373 min
 Delta R.T.: -0.006 min
 Response: 40133
 Conc: 131.85 ng/ml



#15 AR-1232-5

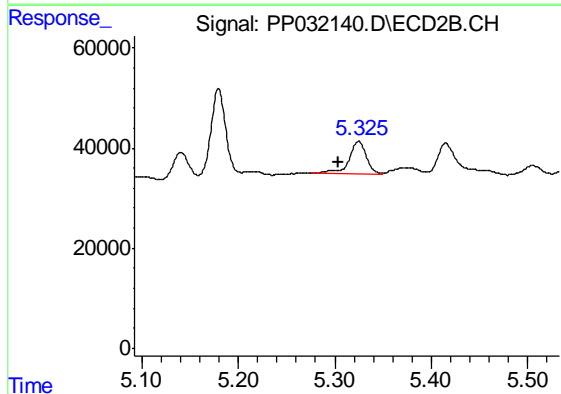
R.T.: 5.794 min
 Delta R.T.: -0.002 min
 Response: 105201
 Conc: 243.22 ng/ml



#16 AR-1242-1

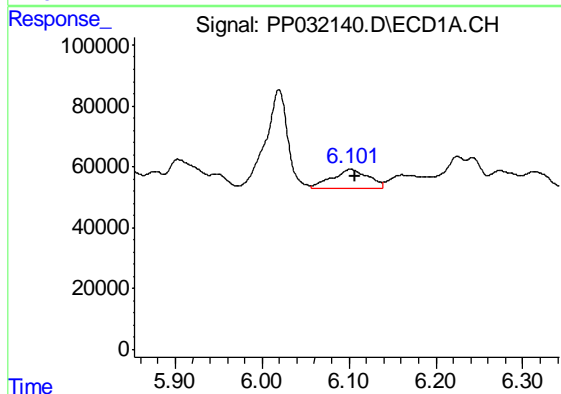
R.T.: 6.102 min
 Delta R.T.: 0.017 min
 Response: 179656
 Conc: 156.80 ng/ml

Instrument :
 ECD_P
 ClientSampleId :
 WOOSPK-035-0002



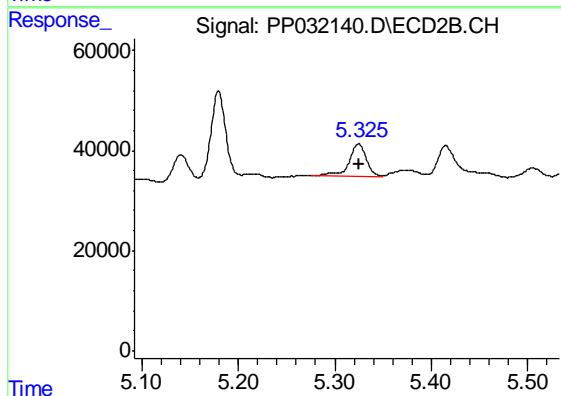
#16 AR-1242-1

R.T.: 5.325 min
 Delta R.T.: 0.020 min
 Response: 80926
 Conc: 78.13 ng/ml



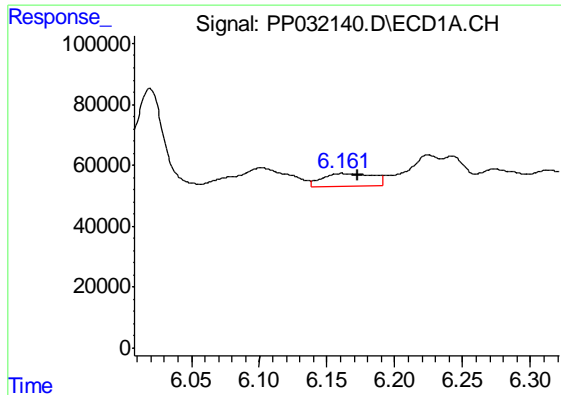
#17 AR-1242-2

R.T.: 6.102 min
 Delta R.T.: -0.006 min
 Response: 179656
 Conc: 102.00 ng/ml



#17 AR-1242-2

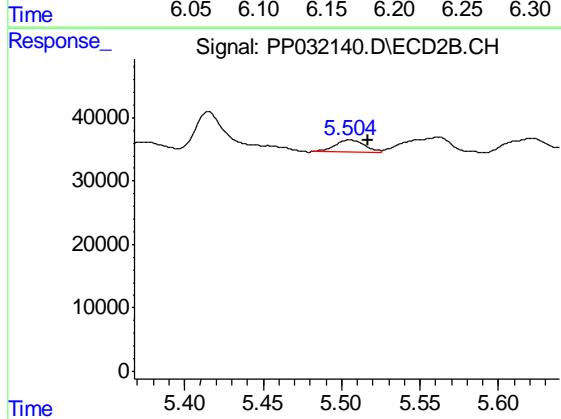
R.T.: 5.325 min
 Delta R.T.: 0.000 min
 Response: 80926
 Conc: 52.36 ng/ml



#18 AR-1242-3

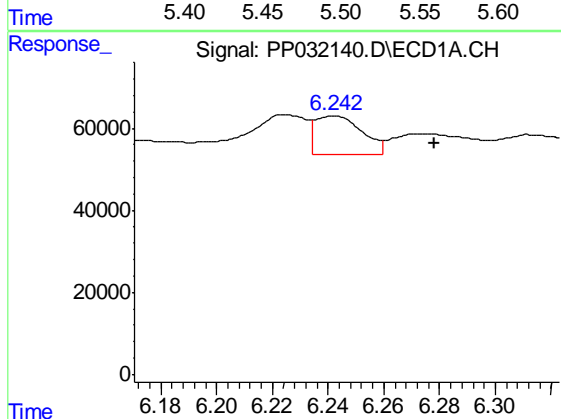
R.T.: 6.162 min
 Delta R.T.: -0.011 min
 Response: 105903
 Conc: 95.43 ng/ml

Instrument :
 ECD_P
 ClientSampleId :
 WOOSPK-035-0002



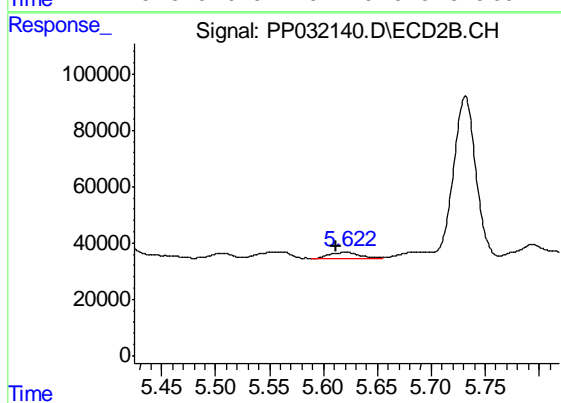
#18 AR-1242-3

R.T.: 5.505 min
 Delta R.T.: -0.012 min
 Response: 24431
 Conc: 29.02 ng/ml



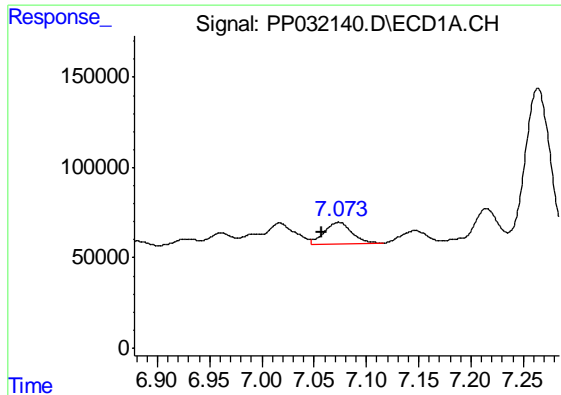
#19 AR-1242-4

R.T.: 6.242 min
 Delta R.T.: -0.036 min
 Response: 112412
 Conc: 123.52 ng/ml



#19 AR-1242-4

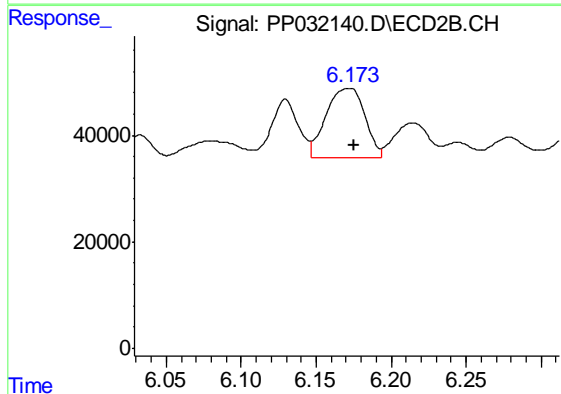
R.T.: 5.622 min
 Delta R.T.: 0.011 min
 Response: 39610
 Conc: 48.83 ng/ml



#20 AR-1242-5

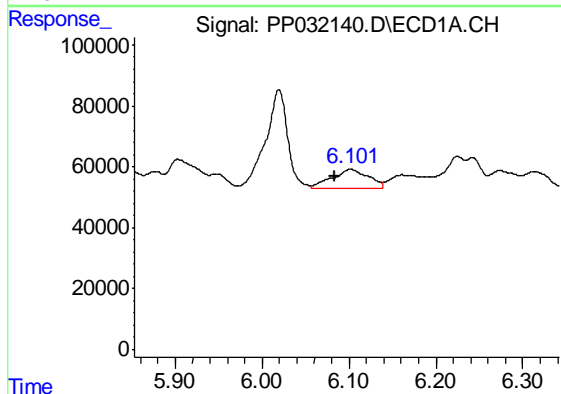
R.T.: 7.074 min
 Delta R.T.: 0.016 min
 Response: 218135
 Conc: 251.49 ng/ml

Instrument :
 ECD_P
 ClientSampleId :
 WOOSPK-035-0002



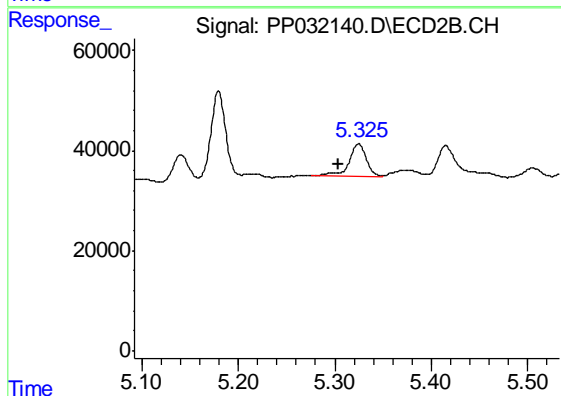
#20 AR-1242-5

R.T.: 6.172 min
 Delta R.T.: -0.003 min
 Response: 232413
 Conc: 261.34 ng/ml



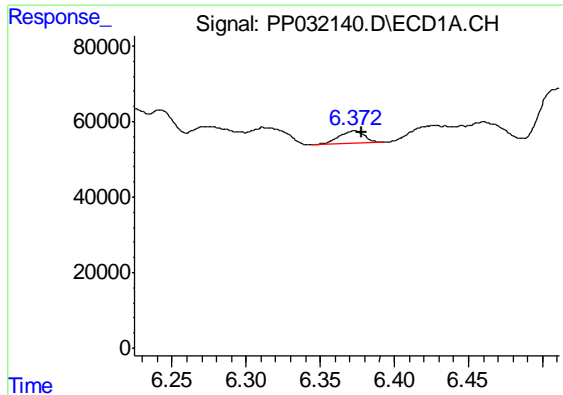
#21 AR-1248-1

R.T.: 6.102 min
 Delta R.T.: 0.018 min
 Response: 179656
 Conc: 206.41 ng/ml



#21 AR-1248-1

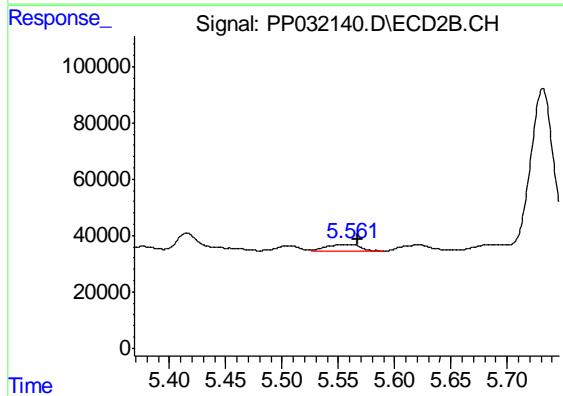
R.T.: 5.325 min
 Delta R.T.: 0.021 min
 Response: 80926
 Conc: 103.42 ng/ml



#22 AR-1248-2

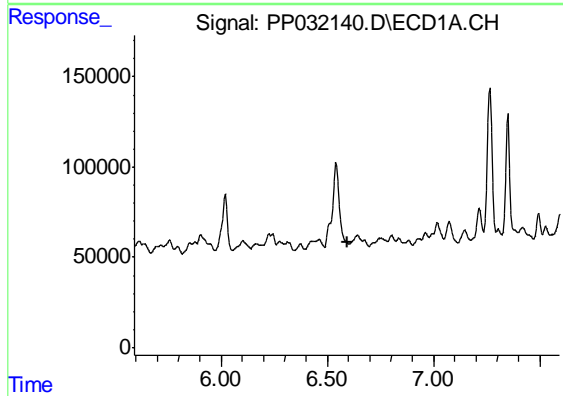
R.T.: 6.373 min
 Delta R.T.: -0.005 min
 Response: 40133
 Conc: 33.88 ng/ml

Instrument :
 ECD_P
 ClientSampleId :
 WOOSPK-035-0002



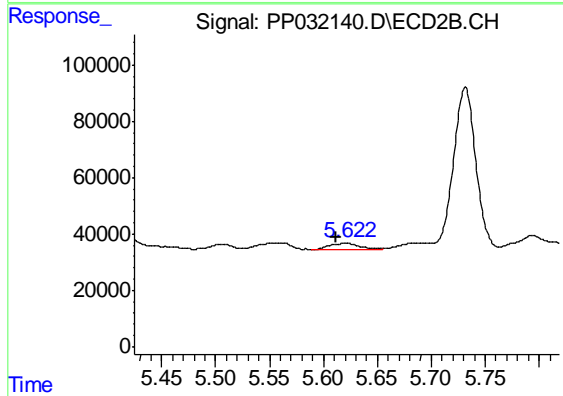
#22 AR-1248-2

R.T.: 5.561 min
 Delta R.T.: -0.006 min
 Response: 47714
 Conc: 41.30 ng/ml



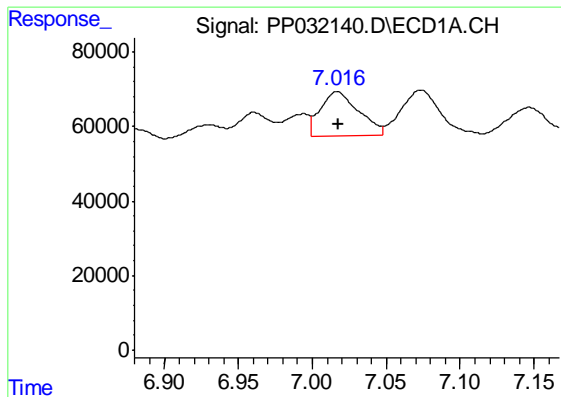
#23 AR-1248-3

R.T.: 0.000 min
 Exp R.T. : 6.592 min
 Response: 0
 Conc: N.D.



#23 AR-1248-3

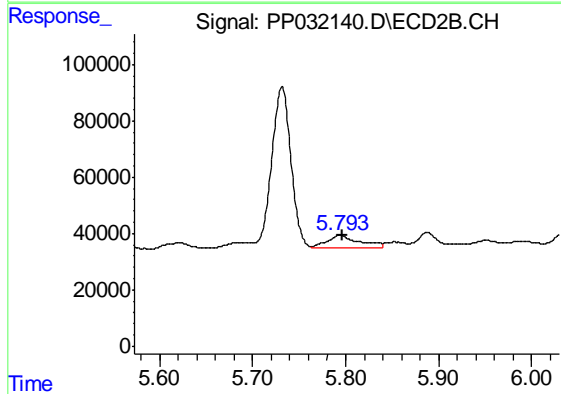
R.T.: 5.622 min
 Delta R.T.: 0.011 min
 Response: 39610
 Conc: 32.43 ng/ml



#24 AR-1248-4

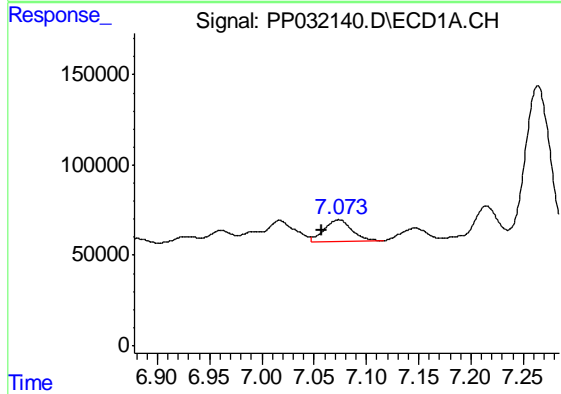
R.T.: 7.017 min
 Delta R.T.: 0.000 min
 Response: 213326
 Conc: 149.12 ng/ml

Instrument :
 ECD_P
 ClientSampleId :
 WOOSPK-035-0002



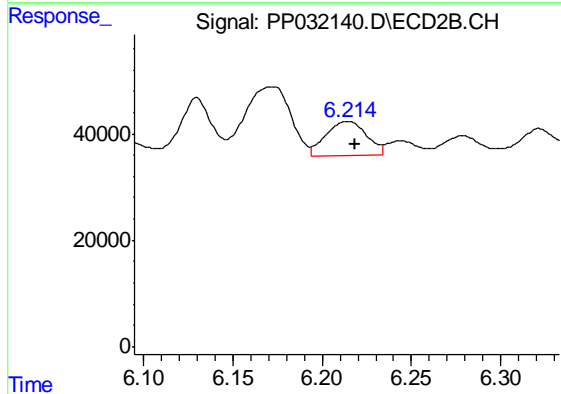
#24 AR-1248-4

R.T.: 5.794 min
 Delta R.T.: -0.002 min
 Response: 105201
 Conc: 71.74 ng/ml



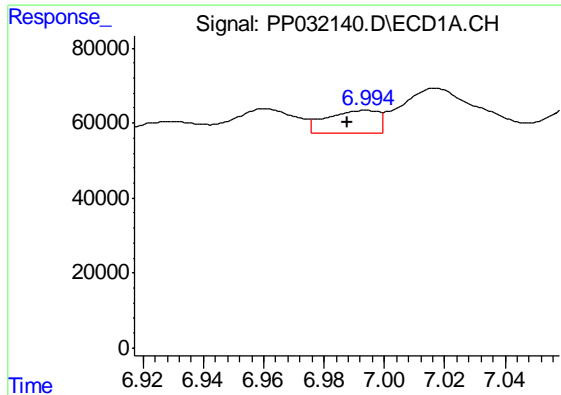
#25 AR-1248-5

R.T.: 7.074 min
 Delta R.T.: 0.017 min
 Response: 218135
 Conc: 147.00 ng/ml



#25 AR-1248-5

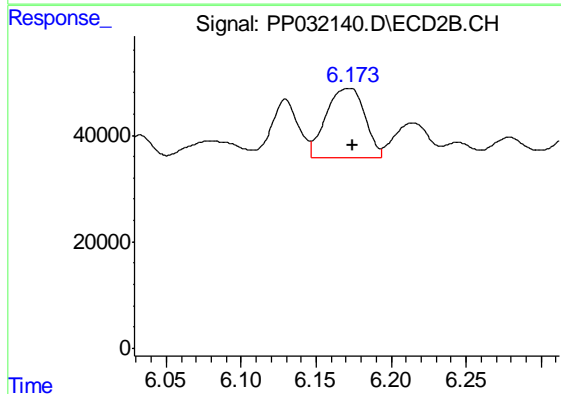
R.T.: 6.214 min
 Delta R.T.: -0.004 min
 Response: 101561
 Conc: 80.95 ng/ml



#26 AR-1254-1

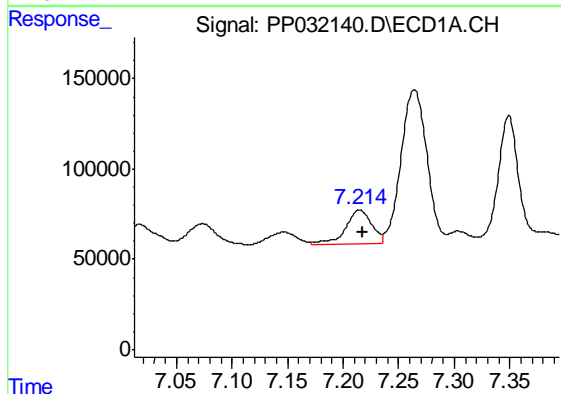
R.T.: 6.994 min
 Delta R.T.: 0.006 min
 Response: 72232
 Conc: 46.50 ng/ml

Instrument :
 ECD_P
 ClientSampleId :
 WOOSPK-035-0002



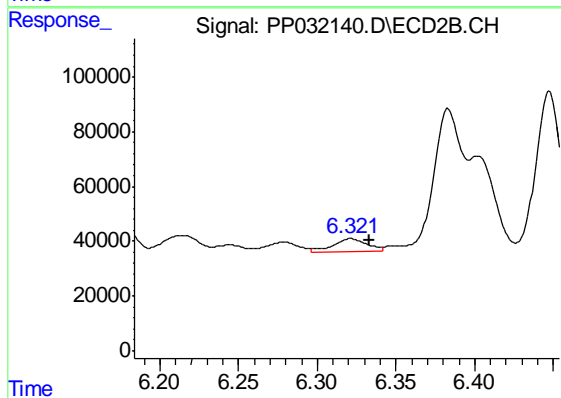
#26 AR-1254-1

R.T.: 6.172 min
 Delta R.T.: -0.002 min
 Response: 232413
 Conc: 112.44 ng/ml



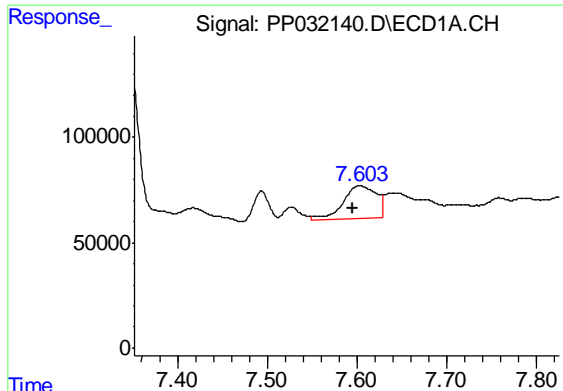
#27 AR-1254-2

R.T.: 7.214 min
 Delta R.T.: -0.003 min
 Response: 305613
 Conc: 132.86 ng/ml



#27 AR-1254-2

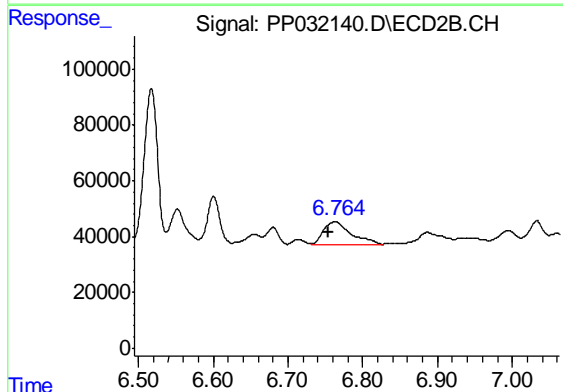
R.T.: 6.321 min
 Delta R.T.: -0.012 min
 Response: 73470
 Conc: 40.98 ng/ml



#28 AR-1254-3

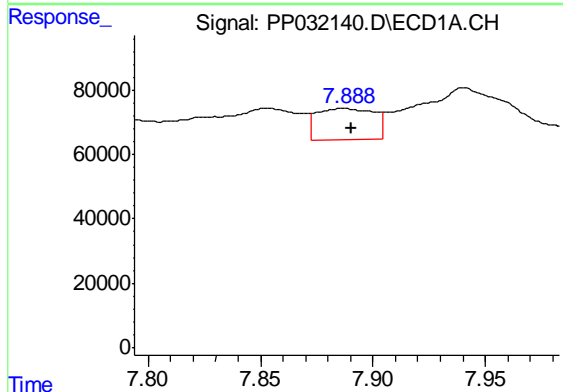
R.T.: 7.603 min
 Delta R.T.: 0.008 min
 Response: 401663
 Conc: 164.96 ng/ml

Instrument :
 ECD_P
 ClientSampleId :
 WOOSPK-035-0002



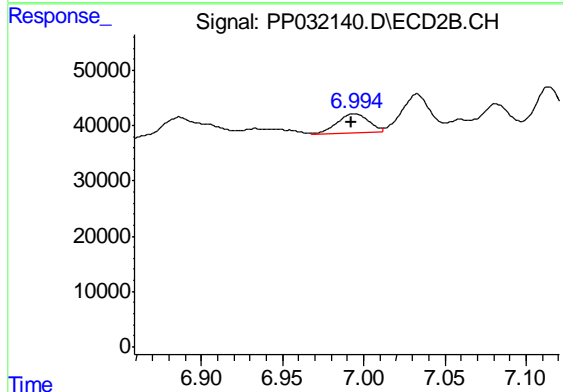
#28 AR-1254-3

R.T.: 6.763 min
 Delta R.T.: 0.010 min
 Response: 210839
 Conc: 73.77 ng/ml



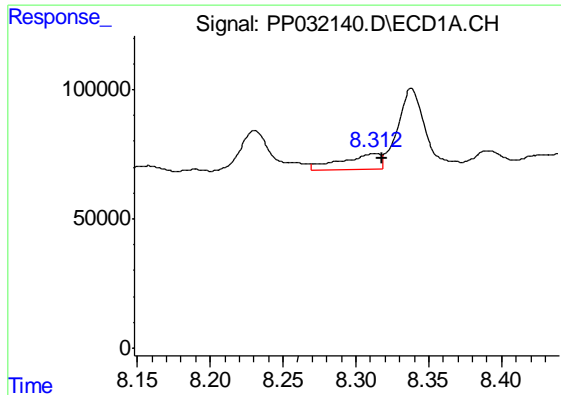
#29 AR-1254-4

R.T.: 7.887 min
 Delta R.T.: -0.003 min
 Response: 171759
 Conc: 111.59 ng/ml



#29 AR-1254-4

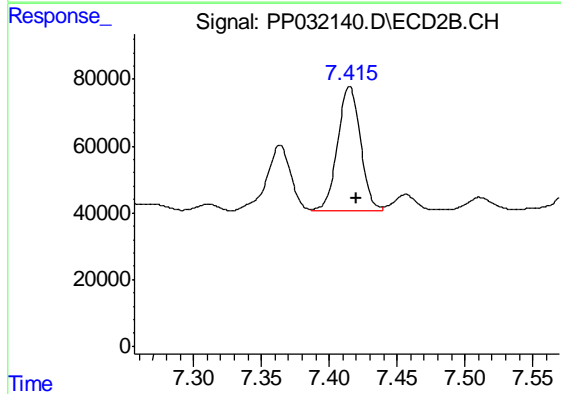
R.T.: 6.994 min
 Delta R.T.: 0.002 min
 Response: 48161
 Conc: 34.85 ng/ml



#30 AR-1254-5

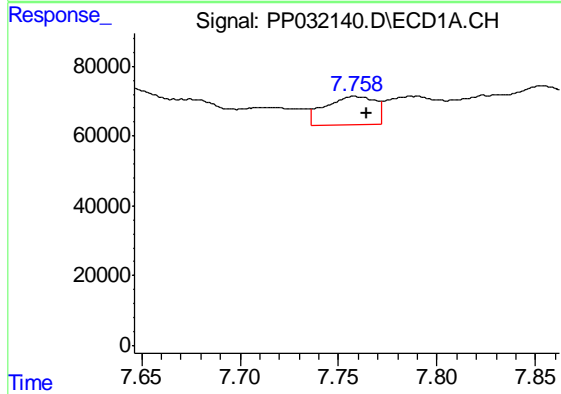
R.T.: 8.313 min
 Delta R.T.: -0.005 min
 Response: 114577
 Conc: 66.85 ng/ml

Instrument :
 ECD_P
 ClientSampleId :
 WOOSPK-035-0002



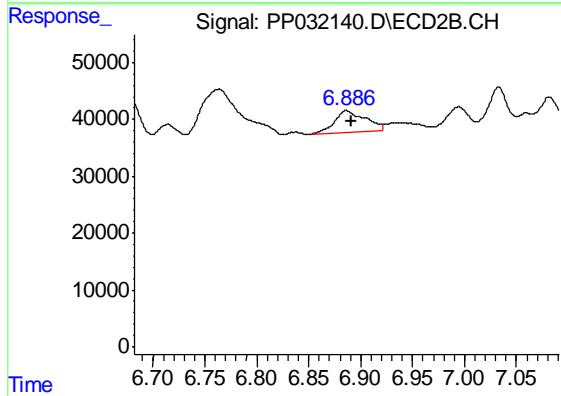
#30 AR-1254-5

R.T.: 7.415 min
 Delta R.T.: -0.005 min
 Response: 431949
 Conc: 181.57 ng/ml



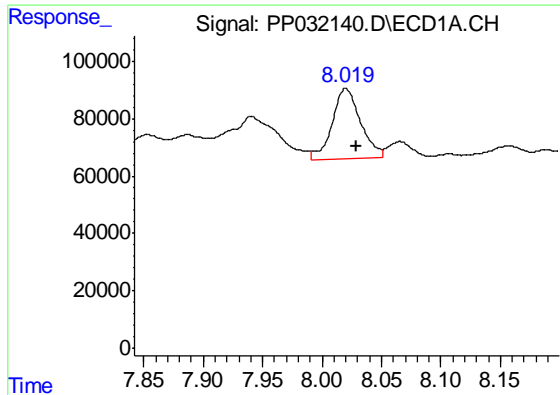
#31 AR-1260-1

R.T.: 7.758 min
 Delta R.T.: -0.006 min
 Response: 147035
 Conc: 84.84 ng/ml



#31 AR-1260-1

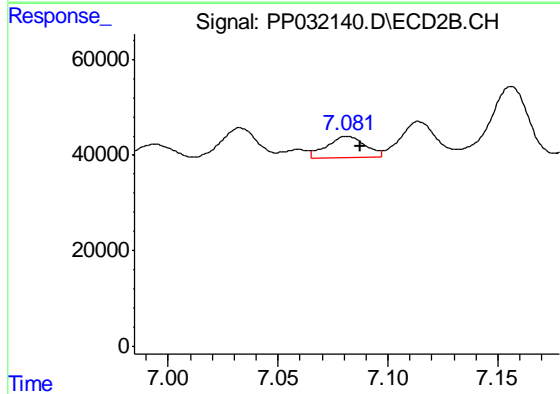
R.T.: 6.886 min
 Delta R.T.: -0.004 min
 Response: 80479
 Conc: 42.45 ng/ml



#32 AR-1260-2

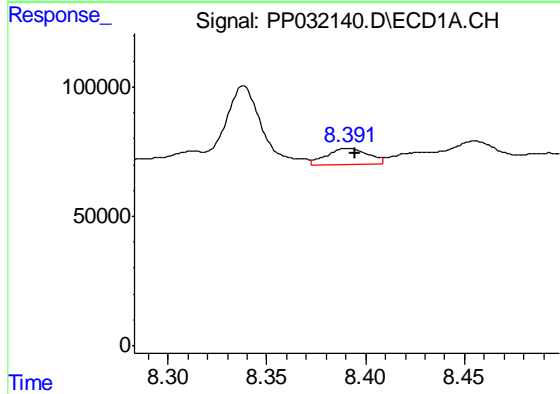
R.T.: 8.020 min
 Delta R.T.: -0.009 min
 Response: 405356
 Conc: 197.29 ng/ml

Instrument :
 ECD_P
 ClientSampleId :
 WOOSPK-035-0002



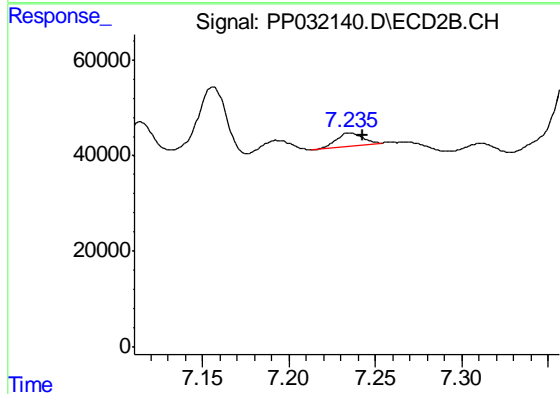
#32 AR-1260-2

R.T.: 7.082 min
 Delta R.T.: -0.006 min
 Response: 54449
 Conc: 25.03 ng/ml



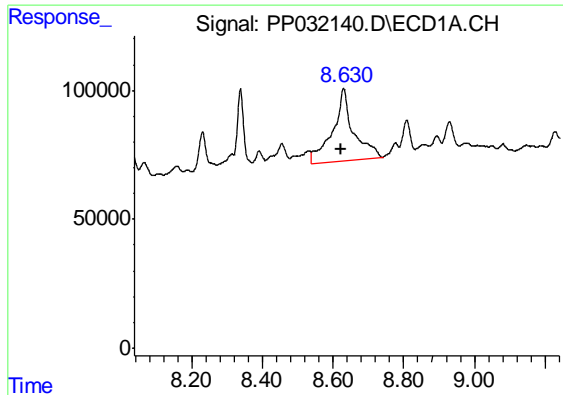
#33 AR-1260-3

R.T.: 8.391 min
 Delta R.T.: -0.004 min
 Response: 90539
 Conc: 51.89 ng/ml



#33 AR-1260-3

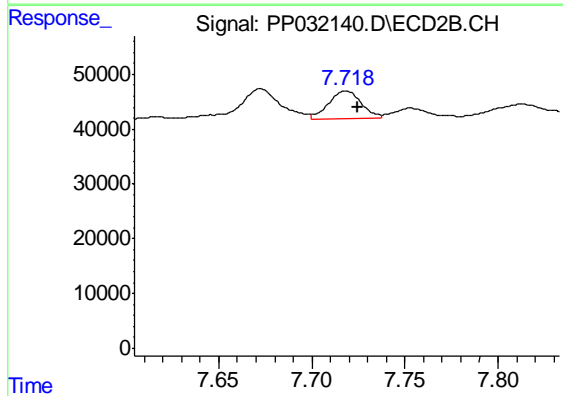
R.T.: 7.235 min
 Delta R.T.: -0.008 min
 Response: 27639
 Conc: 13.01 ng/ml



#34 AR-1260-4

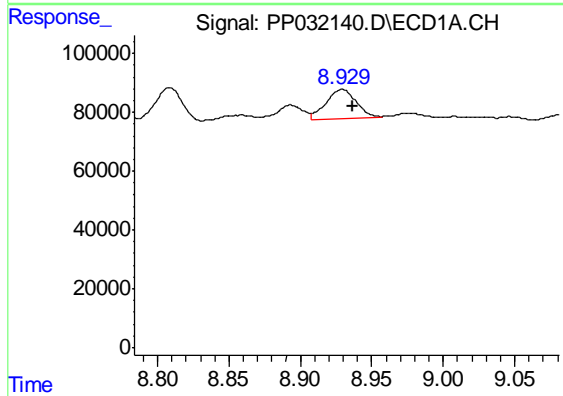
R.T.: 8.630 min
 Delta R.T.: 0.007 min
 Response: 1136467
 Conc: 630.67 ng/ml

Instrument :
 ECD_P
 ClientSampleId :
 WOOSPK-035-0002



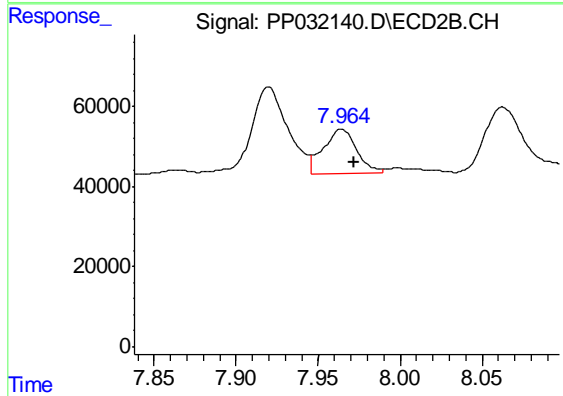
#34 AR-1260-4

R.T.: 7.718 min
 Delta R.T.: -0.006 min
 Response: 60699
 Conc: 34.17 ng/ml



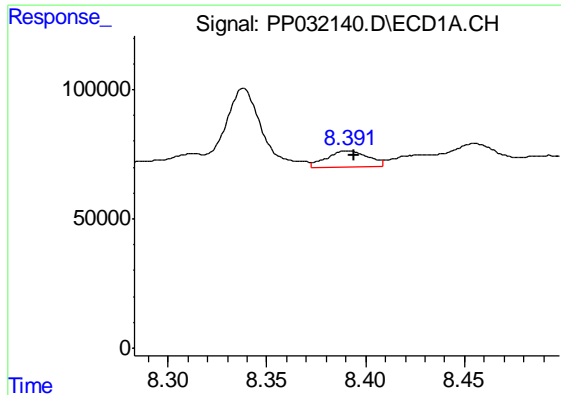
#35 AR-1260-5

R.T.: 8.929 min
 Delta R.T.: -0.007 min
 Response: 146816
 Conc: 40.84 ng/ml



#35 AR-1260-5

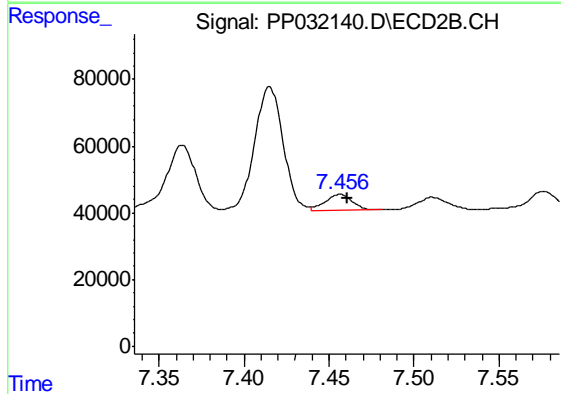
R.T.: 7.964 min
 Delta R.T.: -0.008 min
 Response: 158838
 Conc: 41.52 ng/ml



#36 AR-1262-1

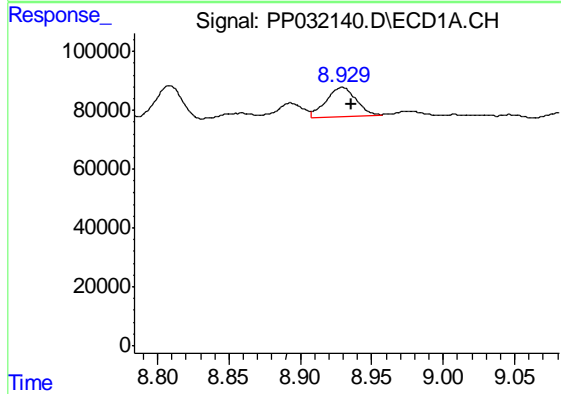
R.T.: 8.391 min
 Delta R.T.: -0.003 min
 Response: 90539
 Conc: 33.55 ng/ml

Instrument :
 ECD_P
 ClientSampleId :
 WOOSPK-035-0002



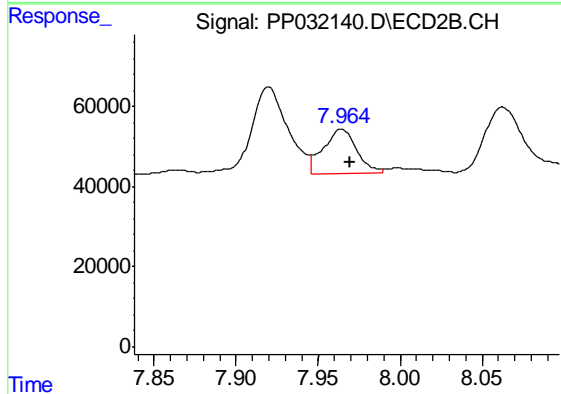
#36 AR-1262-1

R.T.: 7.456 min
 Delta R.T.: -0.004 min
 Response: 50915
 Conc: 18.95 ng/ml



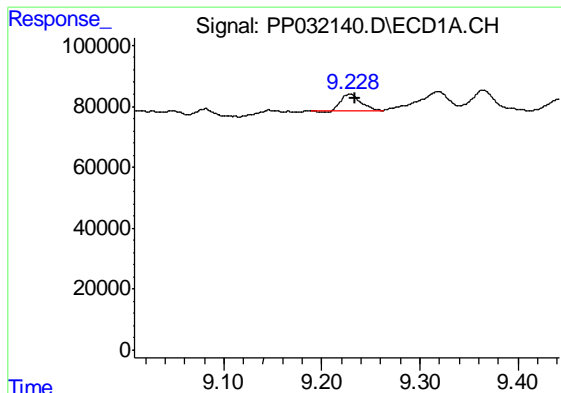
#37 AR-1262-2

R.T.: 8.929 min
 Delta R.T.: -0.007 min
 Response: 146816
 Conc: 36.20 ng/ml



#37 AR-1262-2

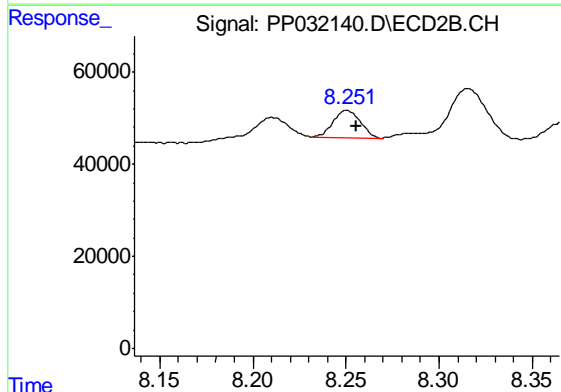
R.T.: 7.964 min
 Delta R.T.: -0.006 min
 Response: 158838
 Conc: 38.09 ng/ml



#38 AR-1262-3

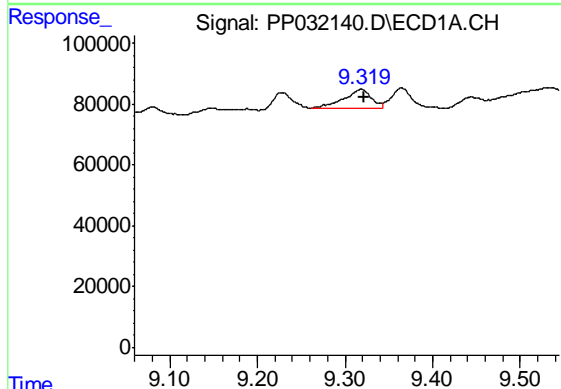
R.T.: 9.229 min
 Delta R.T.: -0.005 min
 Response: 73914
 Conc: 25.79 ng/ml

Instrument :
 ECD_P
 ClientSampleId :
 WOOSPK-035-0002



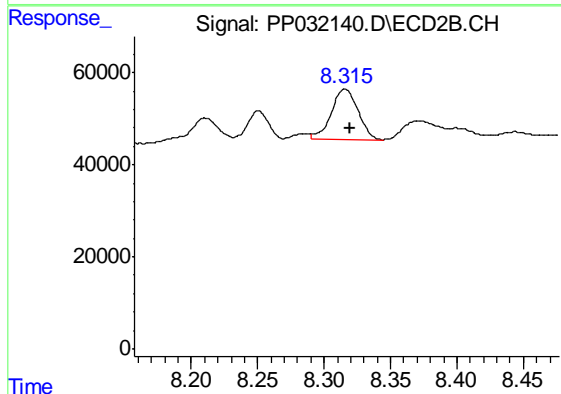
#38 AR-1262-3

R.T.: 8.251 min
 Delta R.T.: -0.005 min
 Response: 59036
 Conc: 32.59 ng/ml



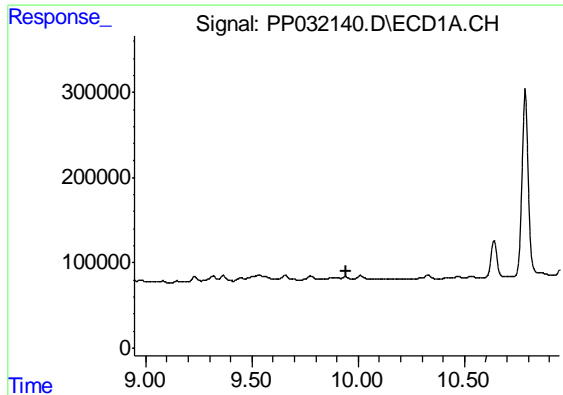
#39 AR-1262-4

R.T.: 9.319 min
 Delta R.T.: -0.003 min
 Response: 141515
 Conc: 58.05 ng/ml



#39 AR-1262-4

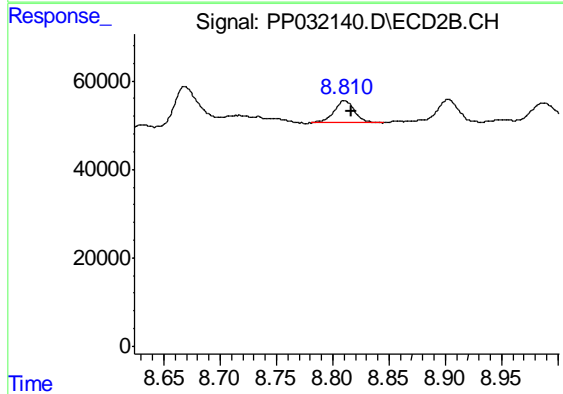
R.T.: 8.315 min
 Delta R.T.: -0.004 min
 Response: 152518
 Conc: 45.33 ng/ml



#40 AR-1262-5

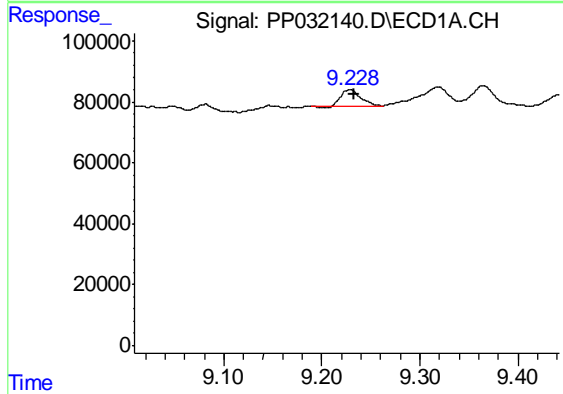
R.T.: 0.000 min
 Exp R.T. : 9.947 min
 Response: 0
 Conc: N.D.

Instrument :
 ECD_P
 ClientSampleId :
 WOOSPK-035-0002



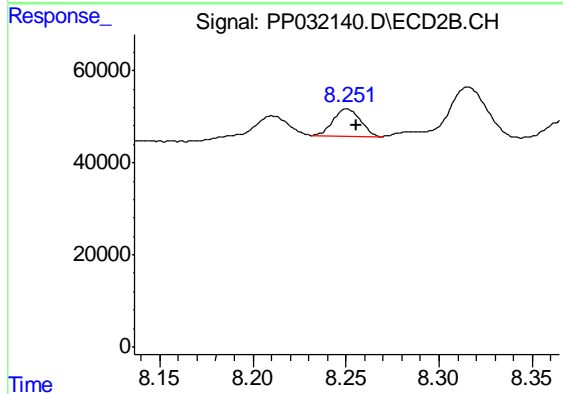
#40 AR-1262-5

R.T.: 8.810 min
 Delta R.T.: -0.006 min
 Response: 66276
 Conc: 50.59 ng/ml



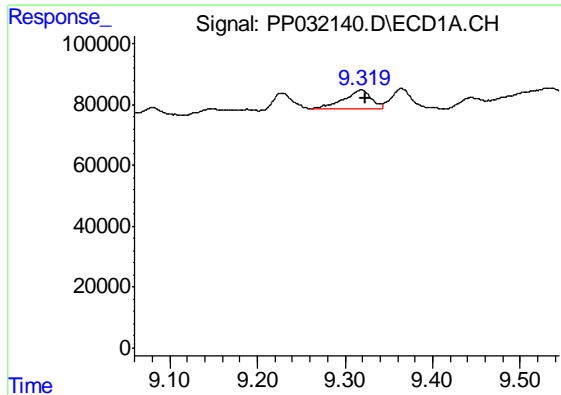
#41 AR-1268-1

R.T.: 9.229 min
 Delta R.T.: -0.004 min
 Response: 73914
 Conc: 14.22 ng/ml



#41 AR-1268-1

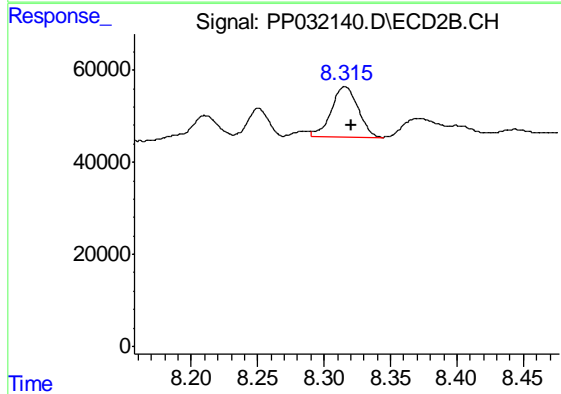
R.T.: 8.251 min
 Delta R.T.: -0.005 min
 Response: 59036
 Conc: 11.71 ng/ml



#42 AR-1268-2

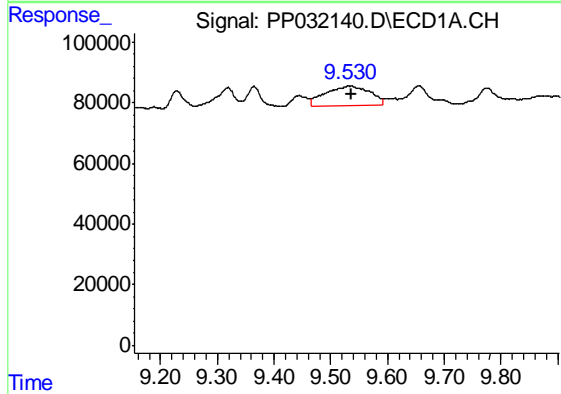
R.T.: 9.319 min
 Delta R.T.: -0.004 min
 Response: 141515
 Conc: 29.07 ng/ml

Instrument :
 ECD_P
 ClientSampleId :
 WOOSPK-035-0002



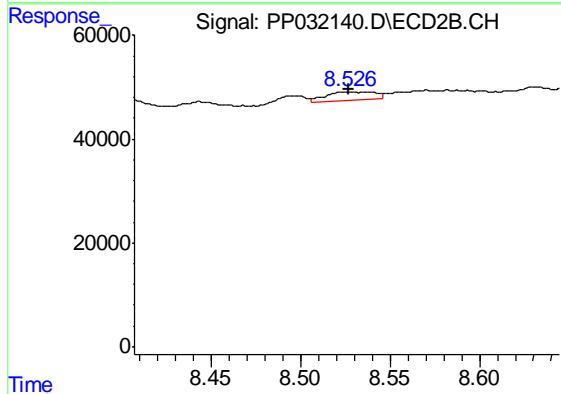
#42 AR-1268-2

R.T.: 8.315 min
 Delta R.T.: -0.005 min
 Response: 152518
 Conc: 29.83 ng/ml



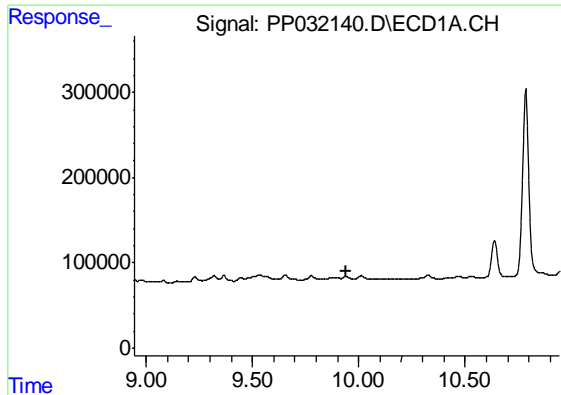
#43 AR-1268-3

R.T.: 9.531 min
 Delta R.T.: -0.006 min
 Response: 351083
 Conc: 81.24 ng/ml



#43 AR-1268-3

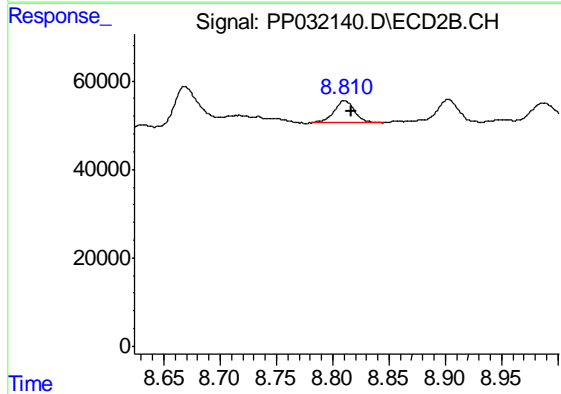
R.T.: 8.527 min
 Delta R.T.: 0.000 min
 Response: 29510
 Conc: 6.69 ng/ml



#44 AR-1268-4

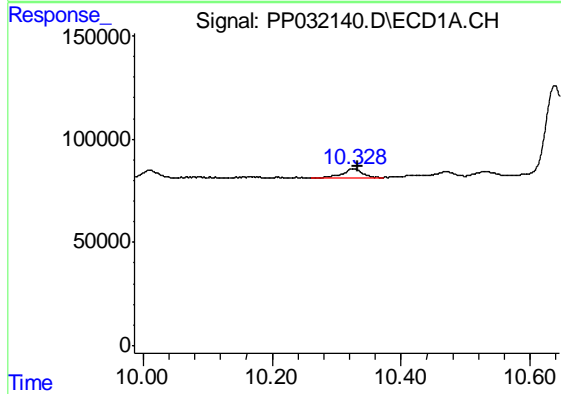
R.T.: 0.000 min
 Exp R.T. : 9.944 min
 Response: 0
 Conc: N.D.

Instrument :
 ECD_P
 ClientSampleId :
 WOOSPK-035-0002



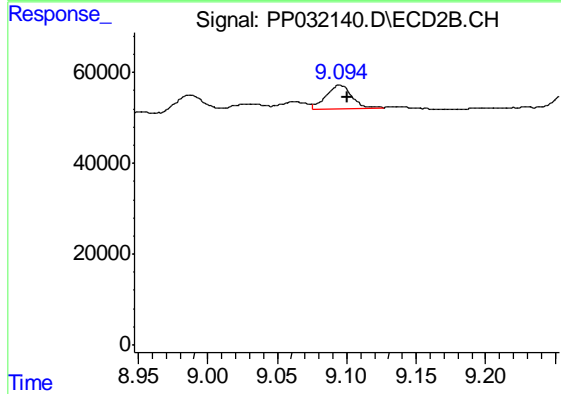
#44 AR-1268-4

R.T.: 8.810 min
 Delta R.T.: -0.006 min
 Response: 66276
 Conc: 45.35 ng/ml



#45 AR-1268-5

R.T.: 10.327 min
 Delta R.T.: -0.005 min
 Response: 91968
 Conc: 7.64 ng/ml



#45 AR-1268-5

R.T.: 9.095 min
 Delta R.T.: -0.006 min
 Response: 66661
 Conc: 5.27 ng/ml