

Data Path : Z:\pestpcbsrv\HPCHEM1\ECD_P\Data\PP121520\
 Data File : PP032145.D
 Signal(s) : Signal #1: ECD1A.CH Signal #2: ECD2B.CH
 Acq On : 15 Dec 2020 13:11
 Operator : DD\AJ
 Sample : AR1254CCC500
 Misc :
 ALS Vial : 5 Sample Multiplier: 1

Instrument :
 ECD_P
 ClientSampleId :
 AR1254CCC500

Integration File signal 1: autoint1.e
 Integration File signal 2: autoint2.e
 Quant Time: Dec 16 04:35:24 2020
 Quant Method : Z:\pestpcbsrv\HPCHEM1\ECD_P\methods\PP121120.M
 Quant Title : GC EXTRACTABLES
 QLast Update : Sat Dec 12 05:15:55 2020
 Response via : Initial Calibration
 Integrator: ChemStation 6890 Scale Mode: Small noise peaks clipped

Volume Inj. : 2 µl
 Signal #1 Phase : ZB-MR1 Signal #2 Phase: ZB-MR2
 Signal #1 Info : 30Mx0.32mmx 0.50µ Signal #2 Info : 30M x 0.32mm x 0.25µm

Compound	RT#1	RT#2	Resp#1	Resp#2	ng/ml	ng/ml

System Monitoring Compounds						
1) SA Tetrachlo...	4.790	4.049	2354972	2199106	45.716	46.496
2) SA Decachlor...	10.653	9.343	1593132	1667128	50.802	49.711
Target Compounds						
6) L1 AR-1016-4	0.000	5.564	0	387073	N.D.	456.177 #
7) L1 AR-1016-5	6.601	5.792	206855	226895	193.869	208.809
9) L2 AR-1221-2	0.000	4.403	0	23431	N.D.	65.110 #
14) L3 AR-1232-4	0.000	5.608	0	109045	N.D.	277.943 #
15) L3 AR-1232-5	6.386	5.792	358855	226895	1178.935	524.576 #
19) L4 AR-1242-4	0.000	5.608	0	109045	N.D.	134.439 #
20) L4 AR-1242-5	7.067	6.172	202096	946084	232.996	1063.815 #
22) L5 AR-1248-2	6.386	5.564	358855	387073	302.952	335.031
23) L5 AR-1248-3	6.601	5.608	206855	109045	141.788	89.271 #
24) L5 AR-1248-4	7.026	5.792	330234	226895	230.838	154.734 #
25) L5 AR-1248-5	7.067	6.216	202096	120716	136.194	96.217 #
26) L6 AR-1254-1	6.997	6.172	641131	946084	412.770	457.702
27) L6 AR-1254-2	7.225	6.331	1009096	812376	438.683	453.152
28) L6 AR-1254-3	7.603	6.751	1116223	1313809	458.421	459.694
29) L6 AR-1254-4	7.898	6.991	792010	758345	514.556	548.753
30) L6 AR-1254-5	8.324	7.418	846675	1124444	494.016	472.651
31) L7 AR-1260-1	7.772	6.887	414664	632668	239.263	333.712 #
32) L7 AR-1260-2	8.036	7.084	465074	514941	226.358	236.714
33) L7 AR-1260-3	8.385	7.236	112543	511187	64.496	240.596 #
34) L7 AR-1260-4	8.618	7.720	354229	53538	196.575	30.135 #
35) L7 AR-1260-5	8.943	7.968	122561	110964	34.093	29.006
36) L8 AR-1262-1	8.385	7.488f	112543	90588	41.709	33.707
37) L8 AR-1262-2	8.943	7.968	122561	110964	30.223	26.612
38) L8 AR-1262-3	9.257f	0.000	89332	0	31.175	N.D. #
39) L8 AR-1262-4	0.000	8.314	0	128667	N.D.	38.244 #
41) L9 AR-1268-1	9.257f	0.000	89332	0	17.192	N.D. #
42) L9 AR-1268-2	0.000	8.314	0	128667	N.D.	25.165 #

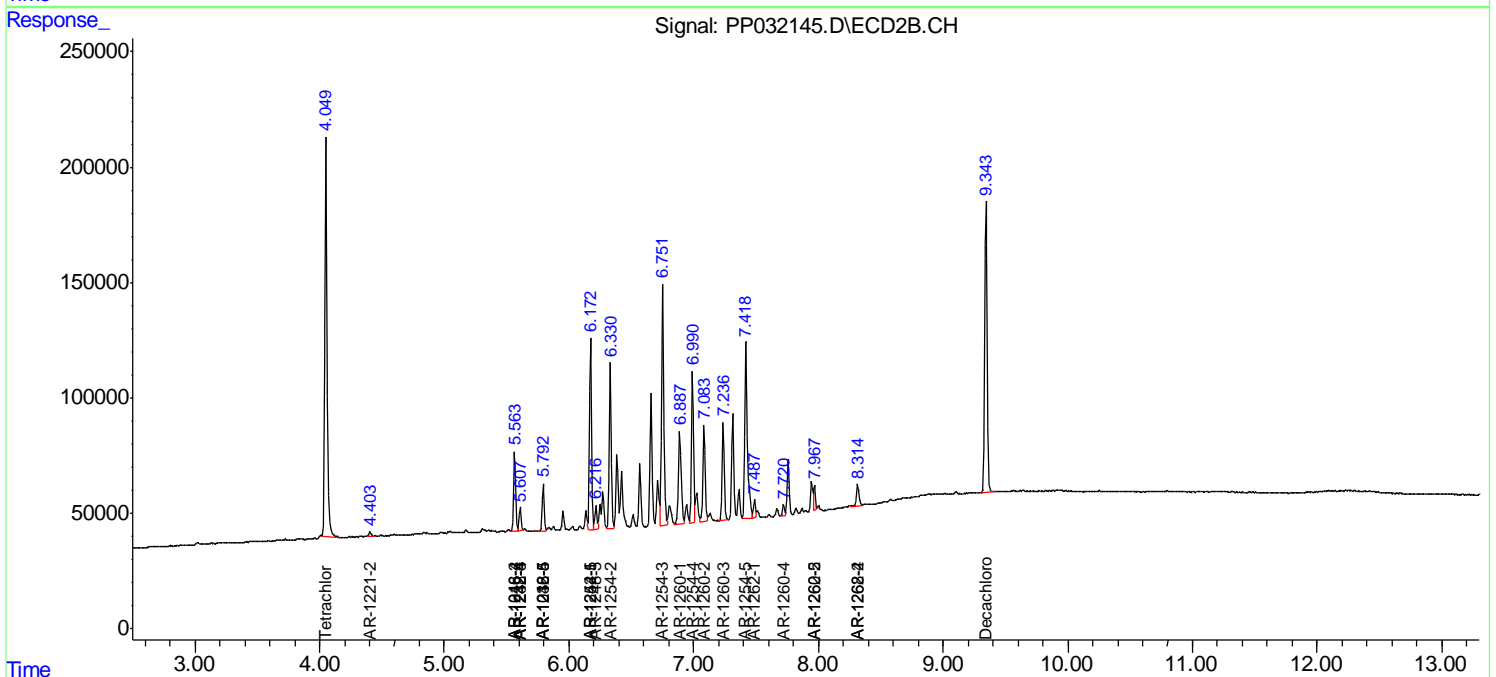
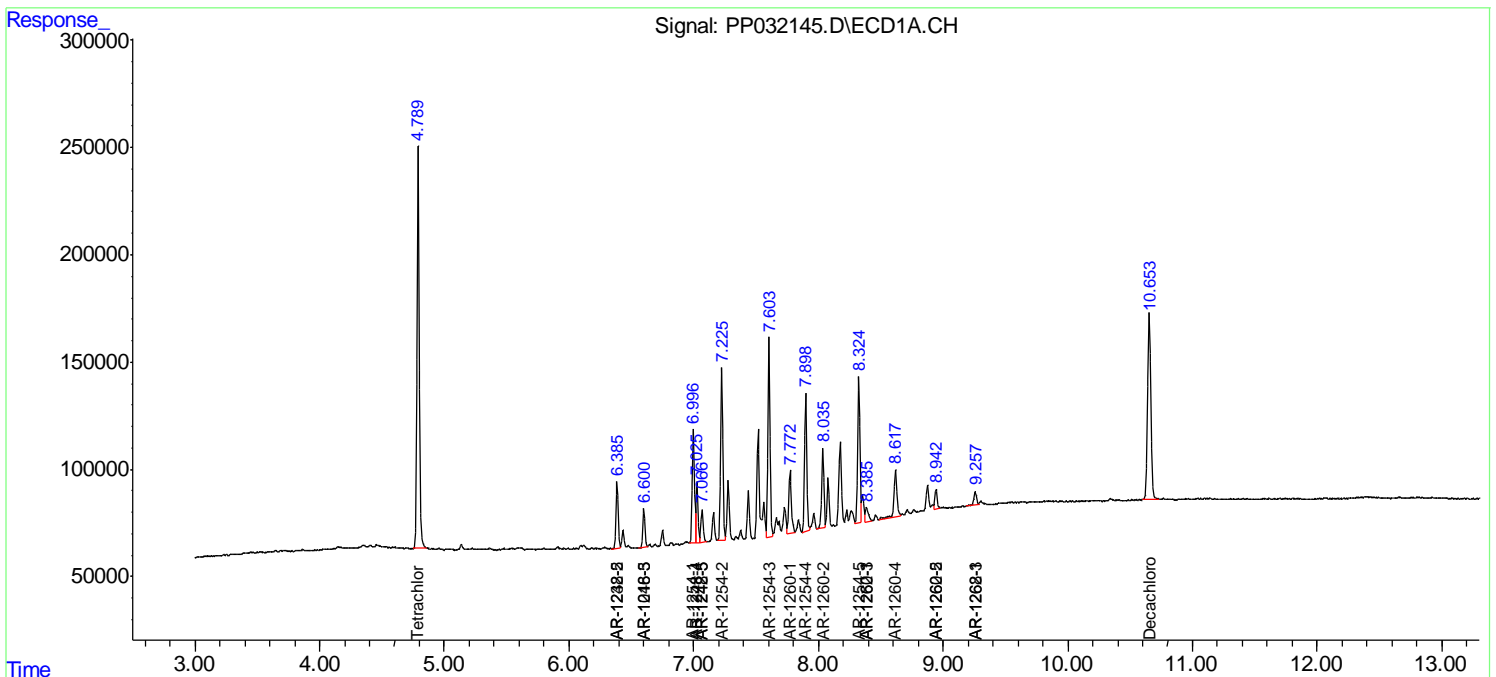
(f)=RT Delta > 1/2 Window (#)=Amounts differ by > 25% (m)=manual int.

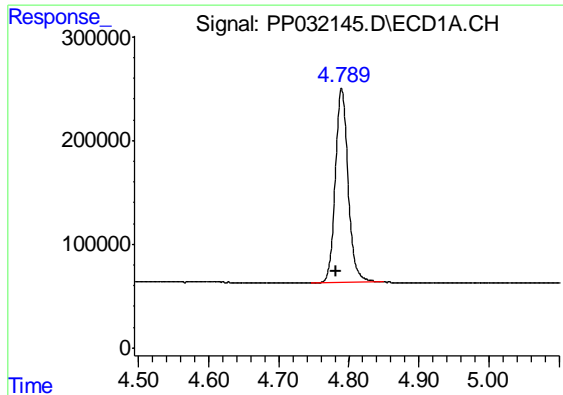
Data Path : Z:\pestpcbsrv\HPCHEM1\ECD_P\Data\PP121520\
 Data File : PP032145.D
 Signal(s) : Signal #1: ECD1A.CH Signal #2: ECD2B.CH
 Acq On : 15 Dec 2020 13:11
 Operator : DD\AJ
 Sample : AR1254CCC500
 Misc :
 ALS Vial : 5 Sample Multiplier: 1

Instrument :
 ECD_P
 Client Sampled :
 AR1254CCC500

Integration File signal 1: autoint1.e
 Integration File signal 2: autoint2.e
 Quant Time: Dec 16 04:35:24 2020
 Quant Method : Z:\pestpcbsrv\HPCHEM1\ECD_P\methods\PP121120.M
 Quant Title : GC EXTRACTABLES
 QLast Update : Sat Dec 12 05:15:55 2020
 Response via : Initial Calibration
 Integrator: ChemStation 6890 Scale Mode: Small noise peaks clipped

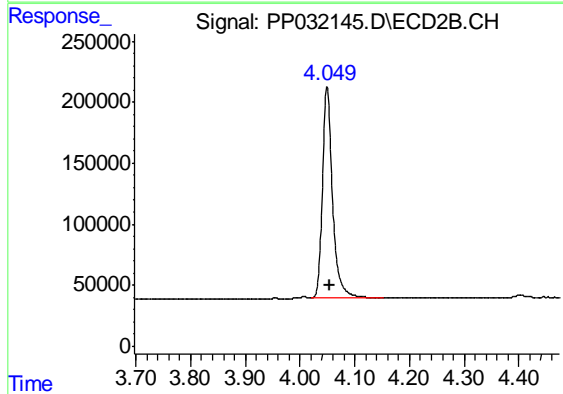
Volume Inj. : 2 µl
 Signal #1 Phase : ZB-MR1 Signal #2 Phase: ZB-MR2
 Signal #1 Info : 30Mx0.32mmx 0.50µ Signal #2 Info : 30M x 0.32mm x 0.25µm



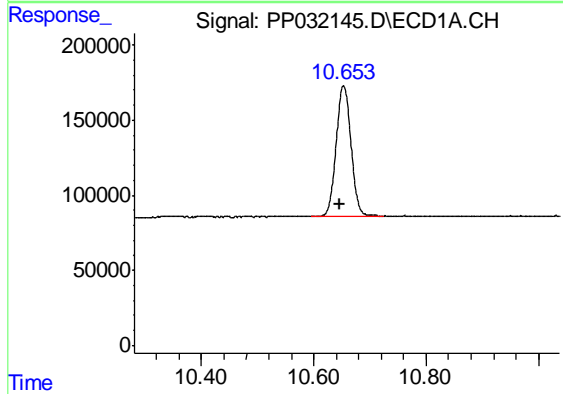


#1 Tetrachloro-m-xylene
 R.T.: 4.790 min
 Delta R.T.: 0.008 min
 Response: 2354972
 Conc: 45.72 ng/ml

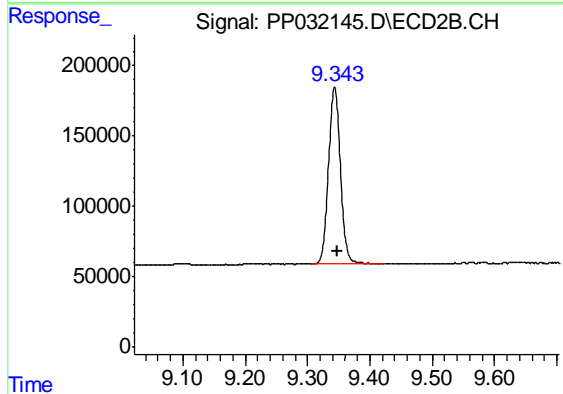
Instrument :
 ECD_P
 ClientSampleId :
 AR1254CCC500



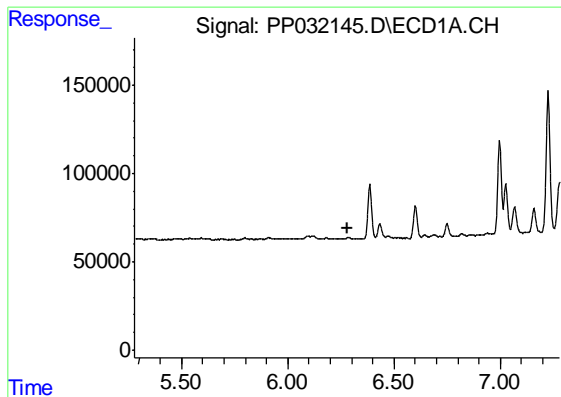
#1 Tetrachloro-m-xylene
 R.T.: 4.049 min
 Delta R.T.: -0.005 min
 Response: 2199106
 Conc: 46.50 ng/ml



#2 Decachlorobiphenyl
 R.T.: 10.653 min
 Delta R.T.: 0.007 min
 Response: 1593132
 Conc: 50.80 ng/ml



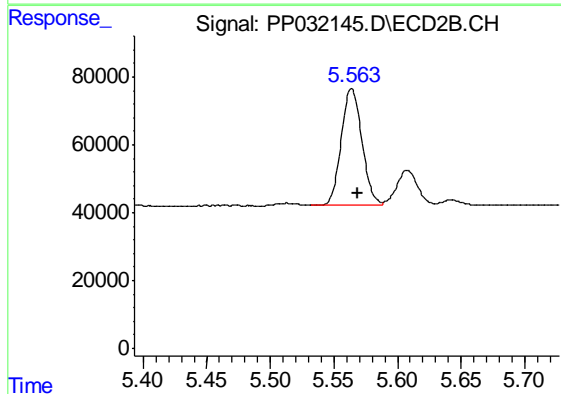
#2 Decachlorobiphenyl
 R.T.: 9.343 min
 Delta R.T.: -0.004 min
 Response: 1667128
 Conc: 49.71 ng/ml



#6 AR-1016-4

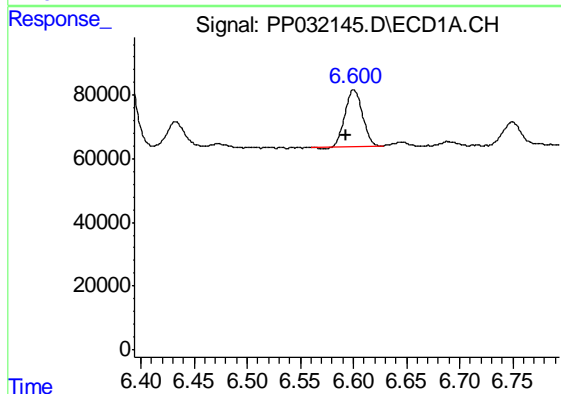
R.T.: 0.000 min
 Exp R.T. : 6.279 min
 Response: 0
 Conc: N.D.

Instrument :
 ECD_P
 ClientSampleId :
 AR1254CCC500



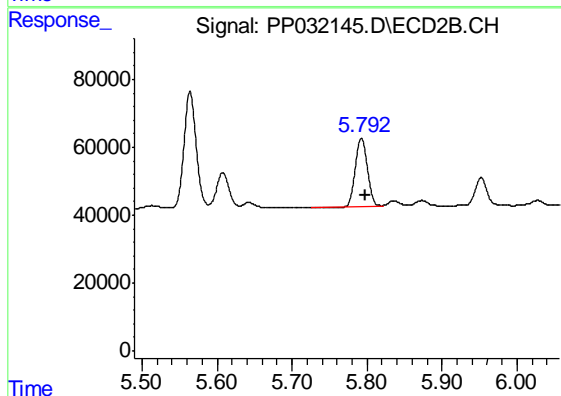
#6 AR-1016-4

R.T.: 5.564 min
 Delta R.T.: -0.004 min
 Response: 387073
 Conc: 456.18 ng/ml



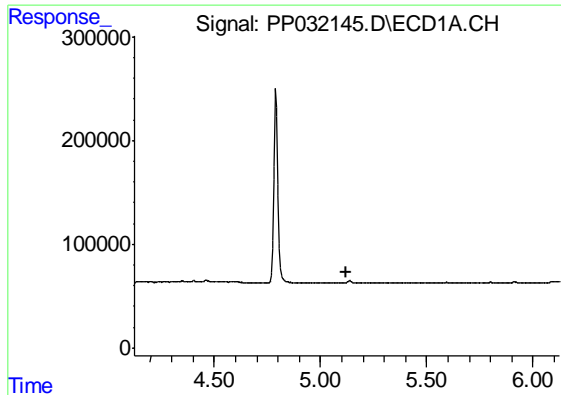
#7 AR-1016-5

R.T.: 6.601 min
 Delta R.T.: 0.008 min
 Response: 206855
 Conc: 193.87 ng/ml



#7 AR-1016-5

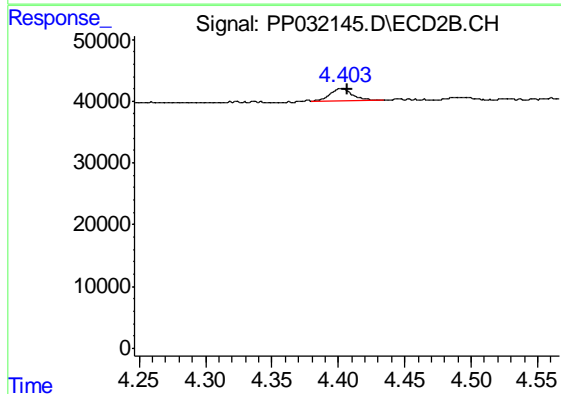
R.T.: 5.792 min
 Delta R.T.: -0.005 min
 Response: 226895
 Conc: 208.81 ng/ml



#9 AR-1221-2

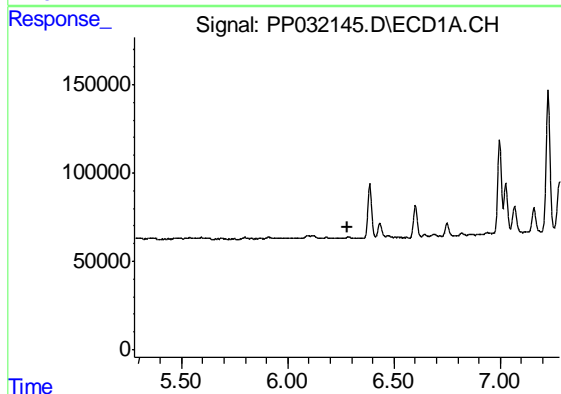
R.T.: 0.000 min
 Exp R.T. : 5.124 min
 Response: 0
 Conc: N.D.

Instrument :
 ECD_P
 ClientSampleId :
 AR1254CCC500



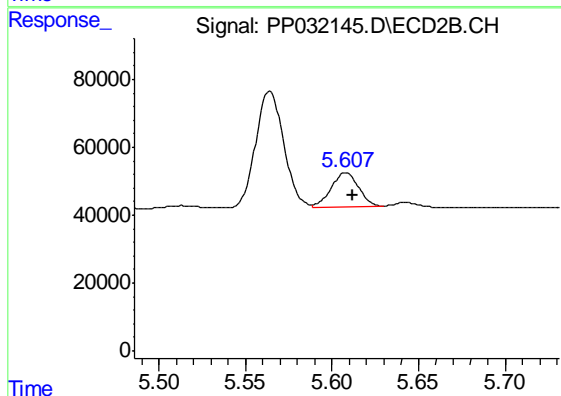
#9 AR-1221-2

R.T.: 4.403 min
 Delta R.T.: -0.004 min
 Response: 23431
 Conc: 65.11 ng/ml



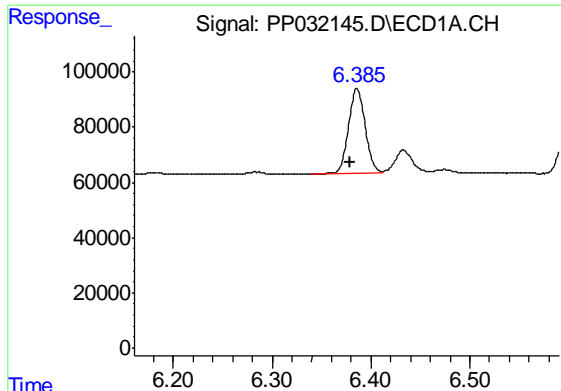
#14 AR-1232-4

R.T.: 0.000 min
 Exp R.T. : 6.279 min
 Response: 0
 Conc: N.D.



#14 AR-1232-4

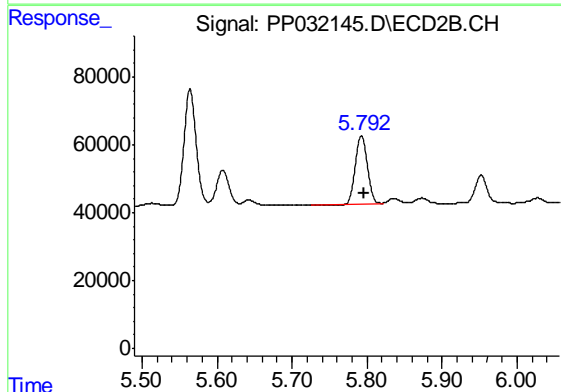
R.T.: 5.608 min
 Delta R.T.: -0.004 min
 Response: 109045
 Conc: 277.94 ng/ml



#15 AR-1232-5

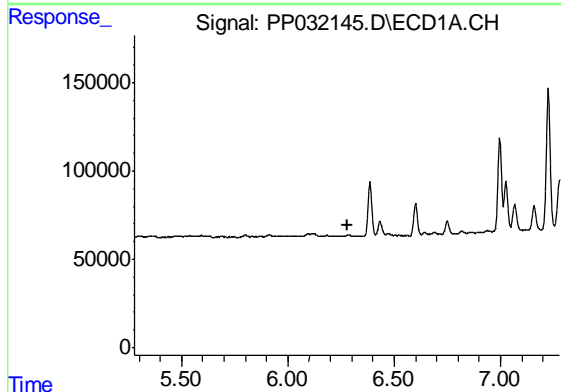
R.T.: 6.386 min
 Delta R.T.: 0.007 min
 Response: 358855
 Conc: 1178.94 ng/ml

Instrument :
 ECD_P
 ClientSampleId :
 AR1254CCC500



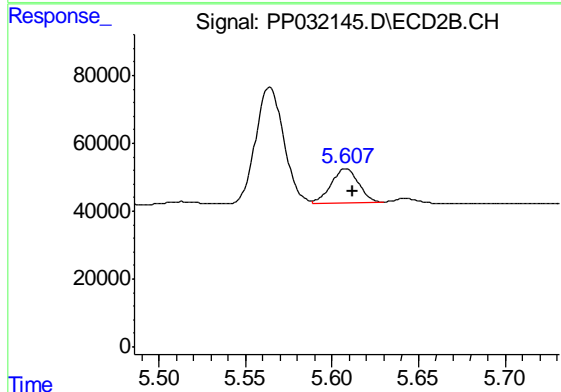
#15 AR-1232-5

R.T.: 5.792 min
 Delta R.T.: -0.004 min
 Response: 226895
 Conc: 524.58 ng/ml



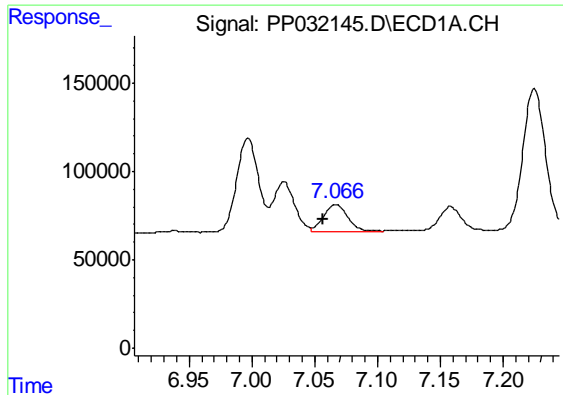
#19 AR-1242-4

R.T.: 0.000 min
 Exp R.T. : 6.278 min
 Response: 0
 Conc: N.D.



#19 AR-1242-4

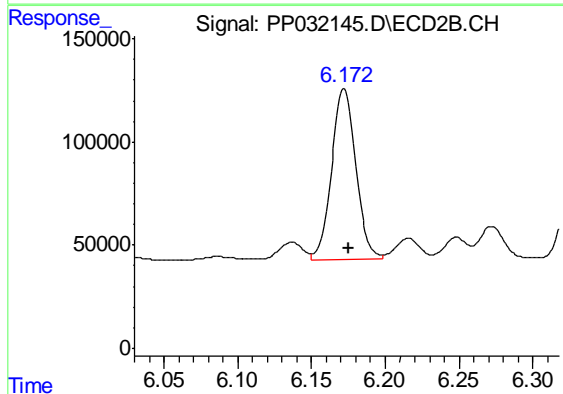
R.T.: 5.608 min
 Delta R.T.: -0.004 min
 Response: 109045
 Conc: 134.44 ng/ml



#20 AR-1242-5

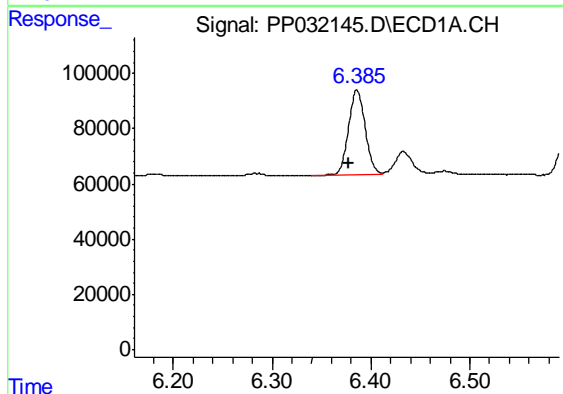
R.T.: 7.067 min
 Delta R.T.: 0.010 min
 Response: 202096
 Conc: 233.00 ng/ml

Instrument :
 ECD_P
 ClientSampleId :
 AR1254CCC500



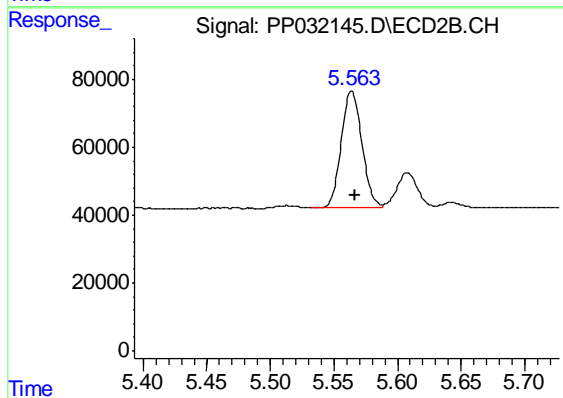
#20 AR-1242-5

R.T.: 6.172 min
 Delta R.T.: -0.003 min
 Response: 946084
 Conc: 1063.82 ng/ml



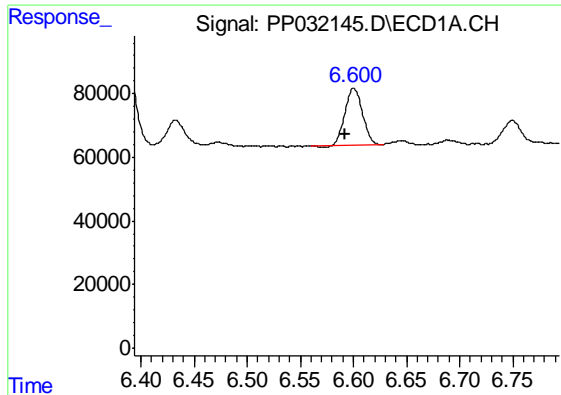
#22 AR-1248-2

R.T.: 6.386 min
 Delta R.T.: 0.008 min
 Response: 358855
 Conc: 302.95 ng/ml



#22 AR-1248-2

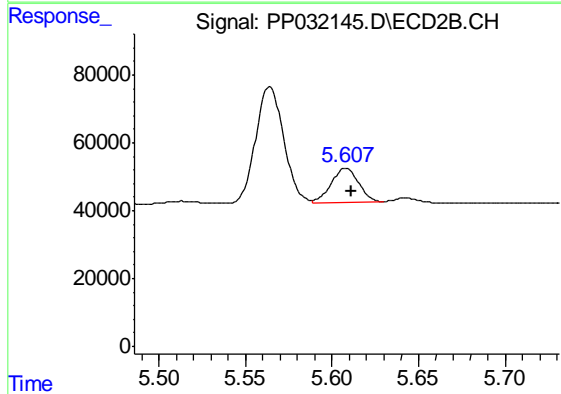
R.T.: 5.564 min
 Delta R.T.: -0.003 min
 Response: 387073
 Conc: 335.03 ng/ml



#23 AR-1248-3

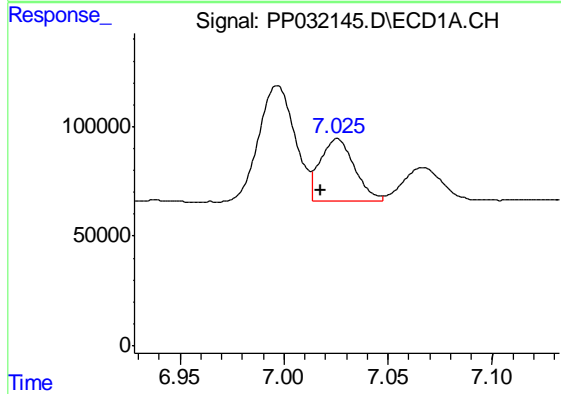
R.T.: 6.601 min
 Delta R.T.: 0.008 min
 Response: 206855
 Conc: 141.79 ng/ml

Instrument :
 ECD_P
 ClientSampleId :
 AR1254CCC500



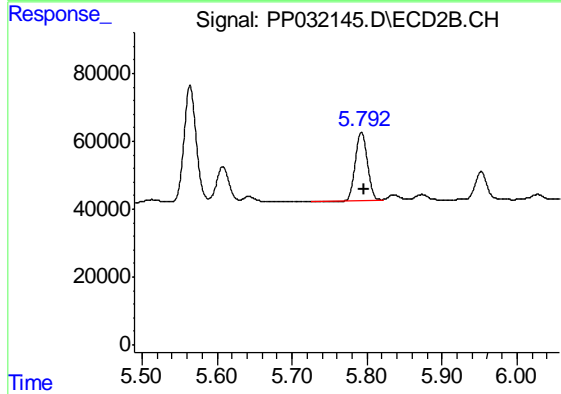
#23 AR-1248-3

R.T.: 5.608 min
 Delta R.T.: -0.003 min
 Response: 109045
 Conc: 89.27 ng/ml



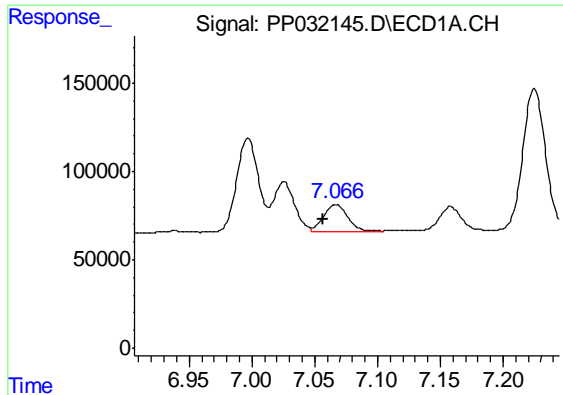
#24 AR-1248-4

R.T.: 7.026 min
 Delta R.T.: 0.008 min
 Response: 330234
 Conc: 230.84 ng/ml



#24 AR-1248-4

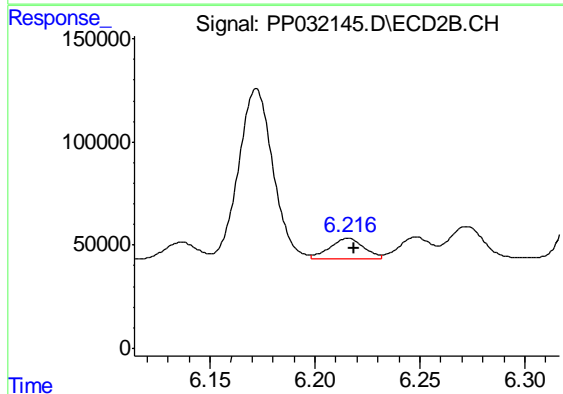
R.T.: 5.792 min
 Delta R.T.: -0.004 min
 Response: 226895
 Conc: 154.73 ng/ml



#25 AR-1248-5

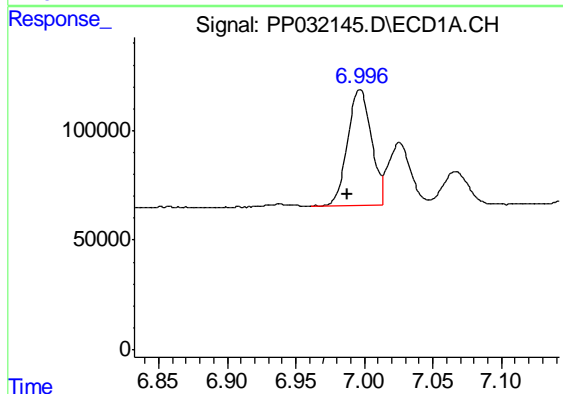
R.T.: 7.067 min
 Delta R.T.: 0.010 min
 Response: 202096
 Conc: 136.19 ng/ml

Instrument :
 ECD_P
 ClientSampleId :
 AR1254CCC500



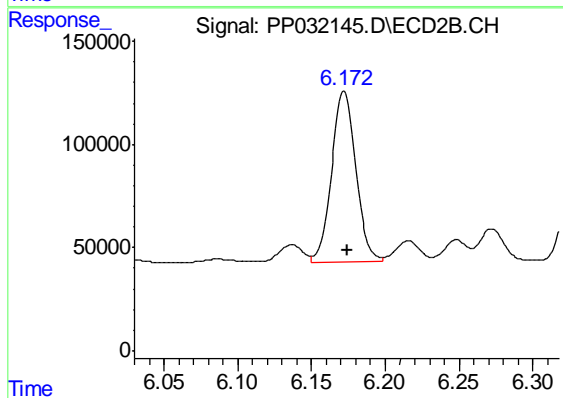
#25 AR-1248-5

R.T.: 6.216 min
 Delta R.T.: -0.002 min
 Response: 120716
 Conc: 96.22 ng/ml



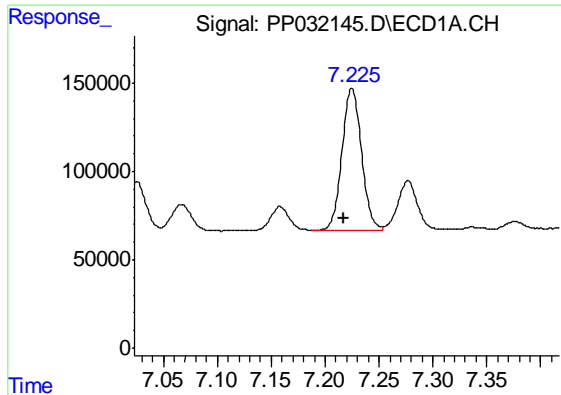
#26 AR-1254-1

R.T.: 6.997 min
 Delta R.T.: 0.009 min
 Response: 641131
 Conc: 412.77 ng/ml



#26 AR-1254-1

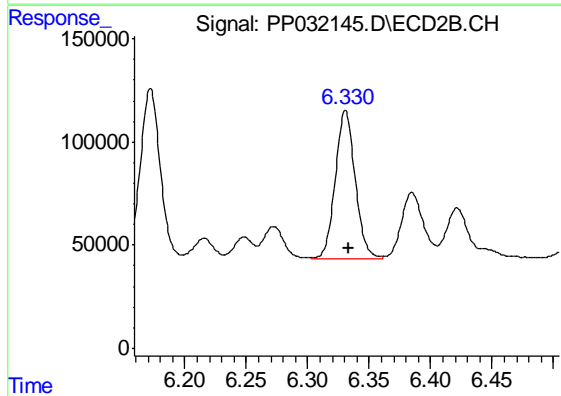
R.T.: 6.172 min
 Delta R.T.: -0.002 min
 Response: 946084
 Conc: 457.70 ng/ml



#27 AR-1254-2

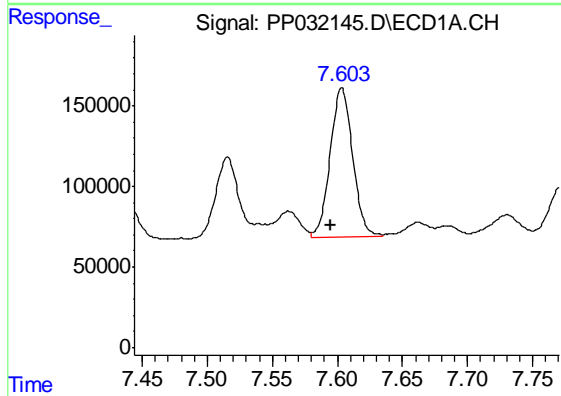
R.T.: 7.225 min
 Delta R.T.: 0.008 min
 Response: 1009096
 Conc: 438.68 ng/ml

Instrument :
 ECD_P
 ClientSampleId :
 AR1254CCC500



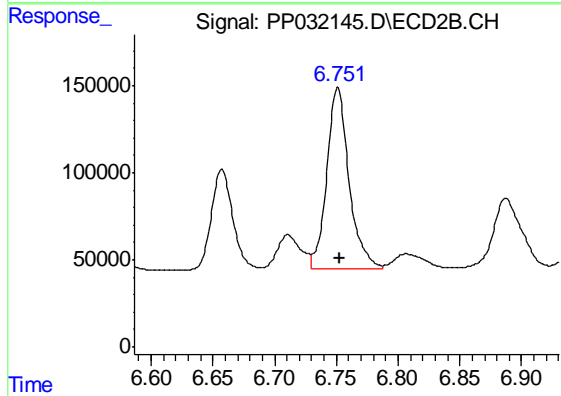
#27 AR-1254-2

R.T.: 6.331 min
 Delta R.T.: -0.002 min
 Response: 812376
 Conc: 453.15 ng/ml



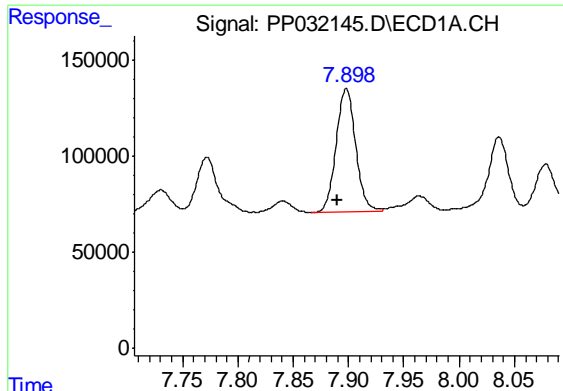
#28 AR-1254-3

R.T.: 7.603 min
 Delta R.T.: 0.008 min
 Response: 1116223
 Conc: 458.42 ng/ml



#28 AR-1254-3

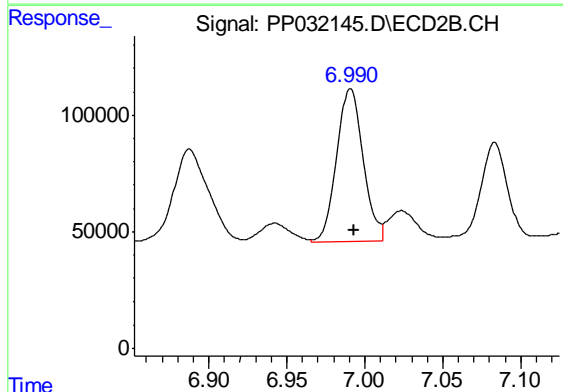
R.T.: 6.751 min
 Delta R.T.: -0.002 min
 Response: 1313809
 Conc: 459.69 ng/ml



#29 AR-1254-4

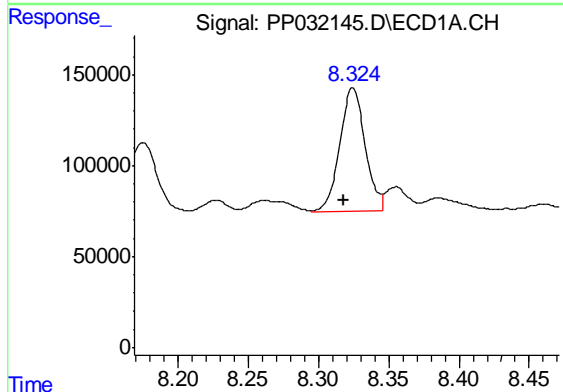
R.T.: 7.898 min
 Delta R.T.: 0.008 min
 Response: 792010
 Conc: 514.56 ng/ml

Instrument :
 ECD_P
 ClientSampleId :
 AR1254CCC500



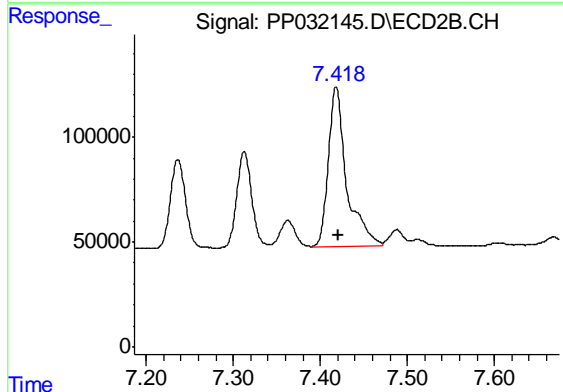
#29 AR-1254-4

R.T.: 6.991 min
 Delta R.T.: -0.002 min
 Response: 758345
 Conc: 548.75 ng/ml



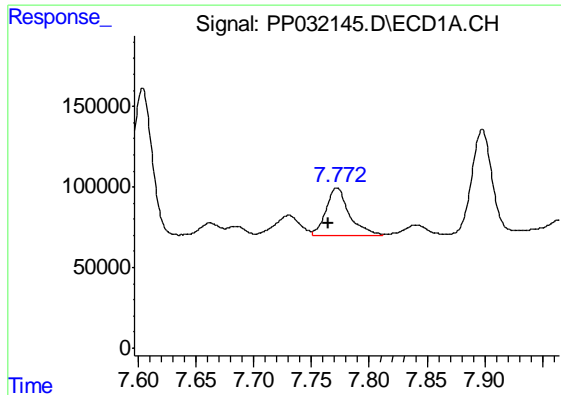
#30 AR-1254-5

R.T.: 8.324 min
 Delta R.T.: 0.007 min
 Response: 846675
 Conc: 494.02 ng/ml



#30 AR-1254-5

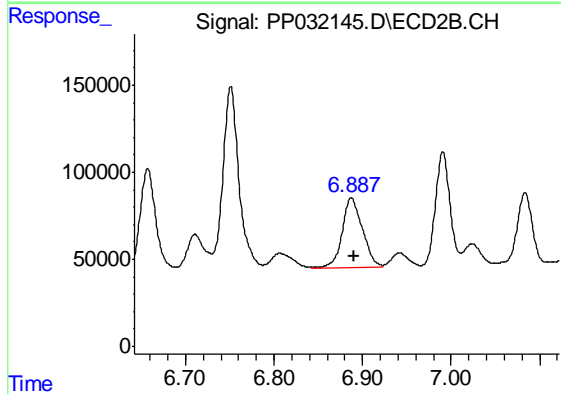
R.T.: 7.418 min
 Delta R.T.: -0.002 min
 Response: 1124444
 Conc: 472.65 ng/ml



#31 AR-1260-1

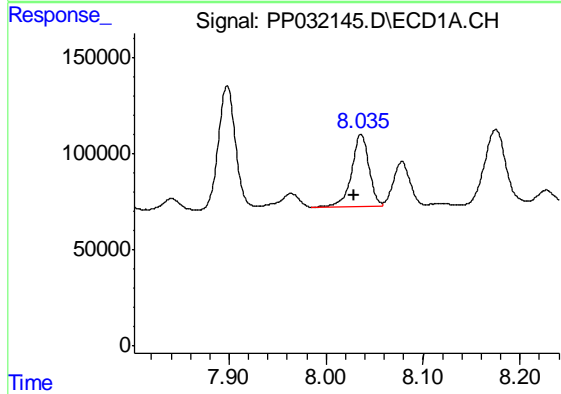
R.T.: 7.772 min
 Delta R.T.: 0.007 min
 Response: 414664
 Conc: 239.26 ng/ml

Instrument :
 ECD_P
 ClientSampleId :
 AR1254CCC500



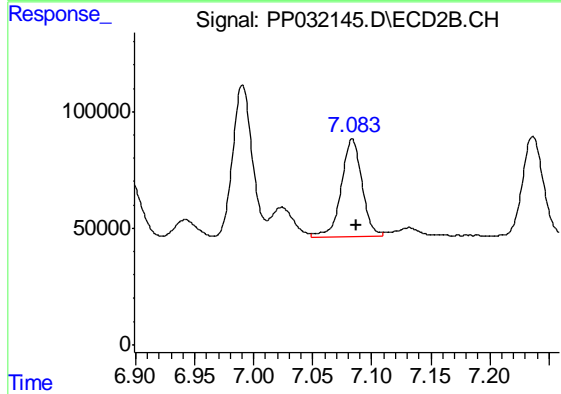
#31 AR-1260-1

R.T.: 6.887 min
 Delta R.T.: -0.003 min
 Response: 632668
 Conc: 333.71 ng/ml



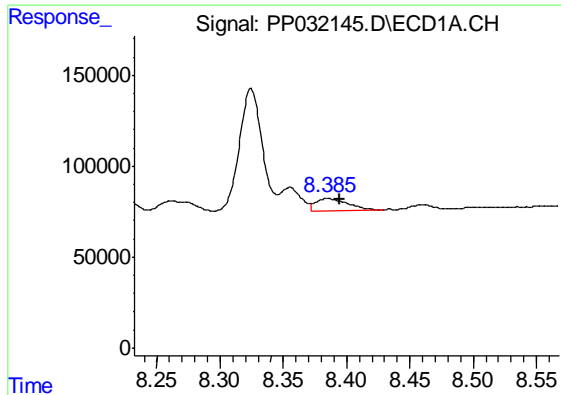
#32 AR-1260-2

R.T.: 8.036 min
 Delta R.T.: 0.007 min
 Response: 465074
 Conc: 226.36 ng/ml



#32 AR-1260-2

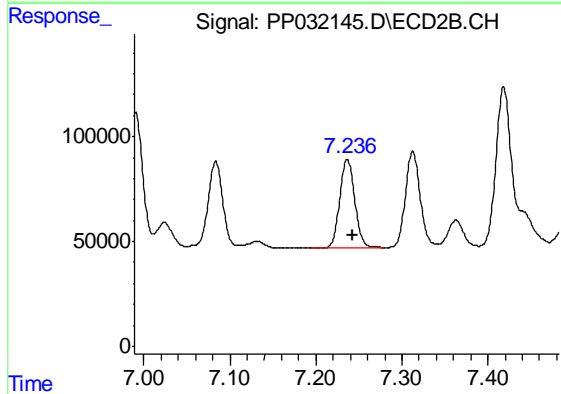
R.T.: 7.084 min
 Delta R.T.: -0.004 min
 Response: 514941
 Conc: 236.71 ng/ml



#33 AR-1260-3

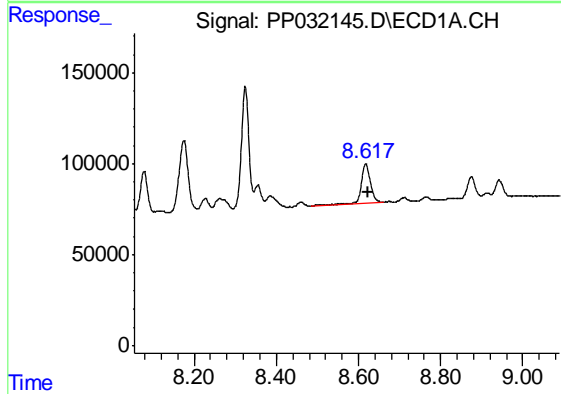
R.T.: 8.385 min
 Delta R.T.: -0.009 min
 Response: 112543
 Conc: 64.50 ng/ml

Instrument :
 ECD_P
 ClientSampled :
 AR1254CCC500



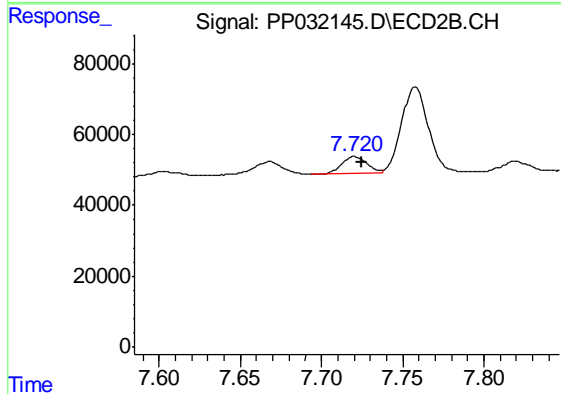
#33 AR-1260-3

R.T.: 7.236 min
 Delta R.T.: -0.007 min
 Response: 511187
 Conc: 240.60 ng/ml



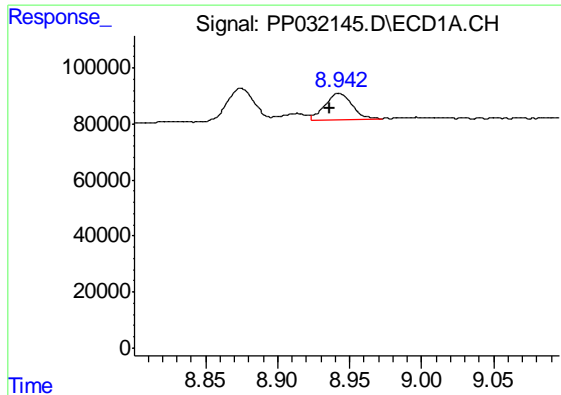
#34 AR-1260-4

R.T.: 8.618 min
 Delta R.T.: -0.005 min
 Response: 354229
 Conc: 196.57 ng/ml



#34 AR-1260-4

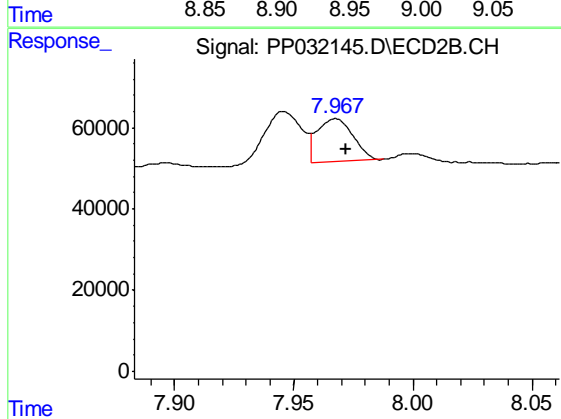
R.T.: 7.720 min
 Delta R.T.: -0.004 min
 Response: 53538
 Conc: 30.13 ng/ml



#35 AR-1260-5

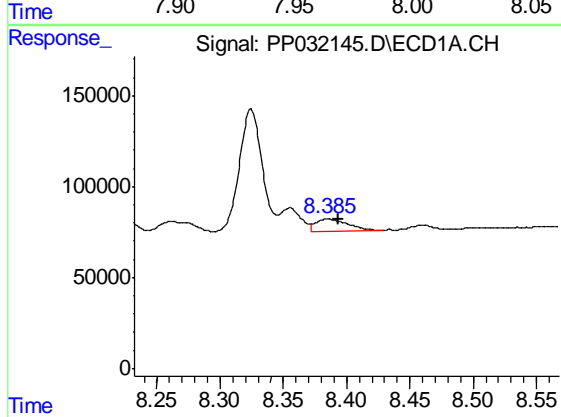
R.T.: 8.943 min
 Delta R.T.: 0.006 min
 Response: 122561
 Conc: 34.09 ng/ml

Instrument :
 ECD_P
 ClientSampleId :
 AR1254CCC500



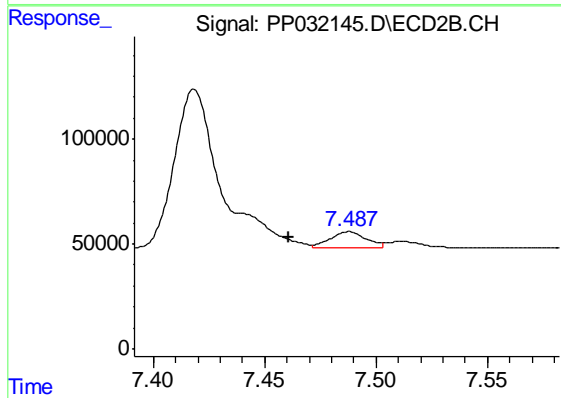
#35 AR-1260-5

R.T.: 7.968 min
 Delta R.T.: -0.004 min
 Response: 110964
 Conc: 29.01 ng/ml



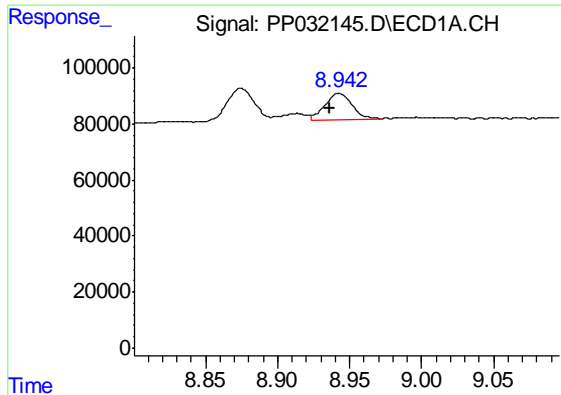
#36 AR-1262-1

R.T.: 8.385 min
 Delta R.T.: -0.009 min
 Response: 112543
 Conc: 41.71 ng/ml



#36 AR-1262-1

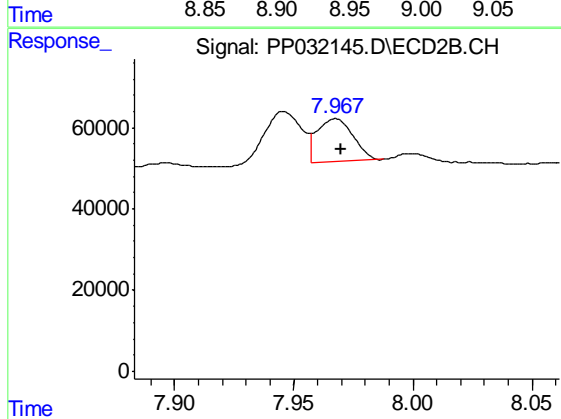
R.T.: 7.488 min
 Delta R.T.: 0.027 min
 Response: 90588
 Conc: 33.71 ng/ml



#37 AR-1262-2

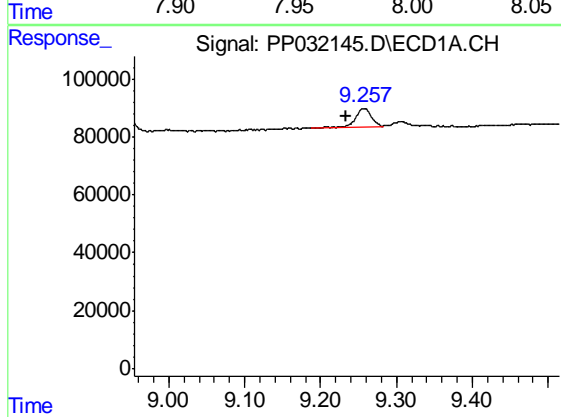
R.T.: 8.943 min
 Delta R.T.: 0.007 min
 Response: 122561
 Conc: 30.22 ng/ml

Instrument :
 ECD_P
 ClientSampleId :
 AR1254CCC500



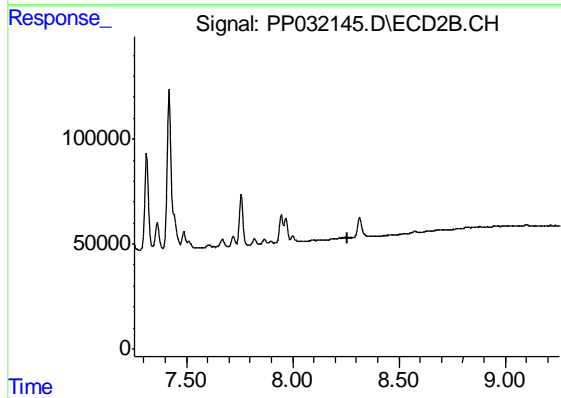
#37 AR-1262-2

R.T.: 7.968 min
 Delta R.T.: -0.002 min
 Response: 110964
 Conc: 26.61 ng/ml



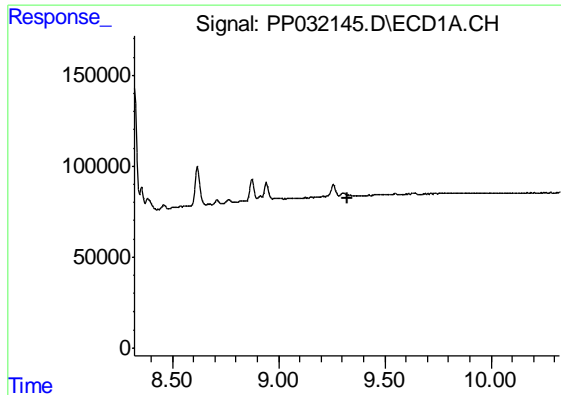
#38 AR-1262-3

R.T.: 9.257 min
 Delta R.T.: 0.024 min
 Response: 89332
 Conc: 31.18 ng/ml



#38 AR-1262-3

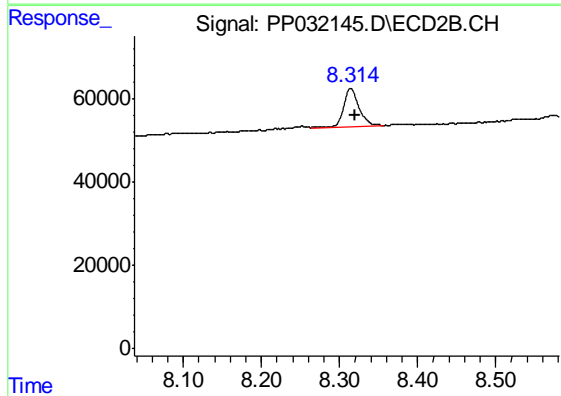
R.T.: 0.000 min
 Exp R.T. : 8.255 min
 Response: 0
 Conc: N.D.



#39 AR-1262-4

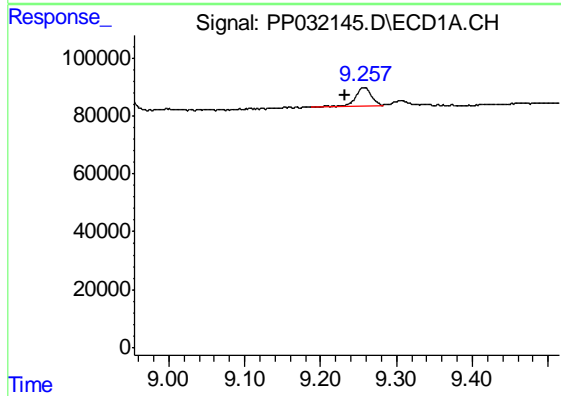
R.T.: 0.000 min
 Exp R.T. : 9.322 min
 Response: 0
 Conc: N.D.

Instrument :
 ECD_P
 ClientSampleId :
 AR1254CCC500



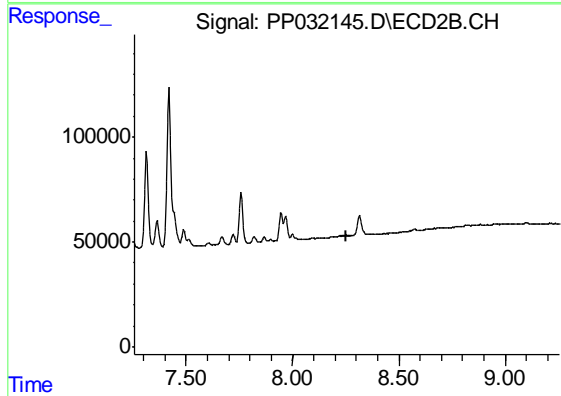
#39 AR-1262-4

R.T.: 8.314 min
 Delta R.T.: -0.005 min
 Response: 128667
 Conc: 38.24 ng/ml



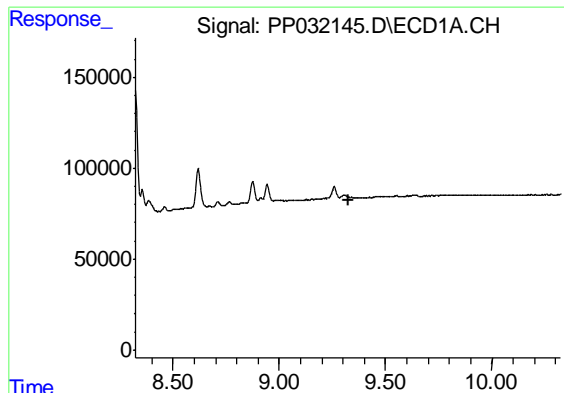
#41 AR-1268-1

R.T.: 9.257 min
 Delta R.T.: 0.025 min
 Response: 89332
 Conc: 17.19 ng/ml



#41 AR-1268-1

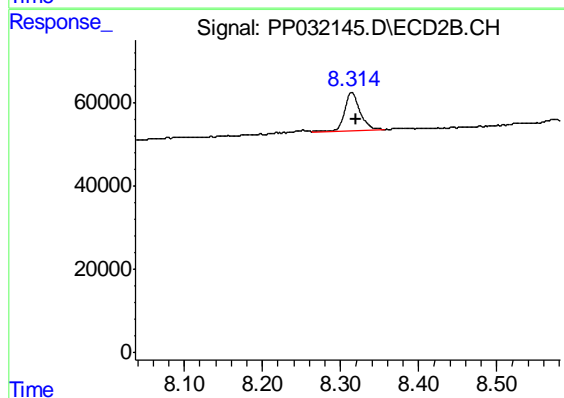
R.T.: 0.000 min
 Exp R.T. : 8.256 min
 Response: 0
 Conc: N.D.



#42 AR-1268-2

R.T.: 0.000 min
Exp R.T. : 9.323 min
Response: 0
Conc: N.D.

Instrument :
ECD_P
ClientSampleId :
AR1254CCC500



#42 AR-1268-2

R.T.: 8.314 min
Delta R.T.: -0.006 min
Response: 128667
Conc: 25.17 ng/ml