

Data Path : Z:\pestpcbsrv\HPCHEM1\ECD_P\Data\PP121520\
 Data File : PP032153.D
 Signal(s) : Signal #1: ECD1A.CH Signal #2: ECD2B.CH
 Acq On : 15 Dec 2020 15:26
 Operator : DD\AJ
 Sample : L5081-16DL 10X
 Misc :
 ALS Vial : 22 Sample Multiplier: 1

Instrument :
 ECD_P
 ClientSampleId :
 WOOSPK-045-0204DL

Integration File signal 1: autoint1.e
 Integration File signal 2: autoint2.e
 Quant Time: Dec 16 04:40:33 2020
 Quant Method : Z:\pestpcbsrv\HPCHEM1\ECD_P\methods\PP121120.M
 Quant Title : GC EXTRACTABLES
 QLast Update : Sat Dec 12 05:15:55 2020
 Response via : Initial Calibration
 Integrator: ChemStation 6890 Scale Mode: Small noise peaks clipped

Volume Inj. : 2 µl
 Signal #1 Phase : ZB-MR1 Signal #2 Phase: ZB-MR2
 Signal #1 Info : 30Mx0.32mmx 0.50µ Signal #2 Info : 30M x 0.32mm x 0.25µm

Compound	RT#1	RT#2	Resp#1	Resp#2	ng/ml	ng/ml

System Monitoring Compounds						
1) SA Tetrachlo...	4.777	4.049	86499	81345	1.679	1.720
2) SA Decachlor...	10.637	9.340	117511	94642	3.747	2.822
Target Compounds						
3) L1 AR-1016-1	0.000	5.300	0	28482	N.D.	21.789 #
4) L1 AR-1016-2	0.000	5.300f	0	28482	N.D.	14.385 #
5) L1 AR-1016-3	0.000	5.510	0	22157	N.D.	20.720 #
8) L2 AR-1221-1	0.000	4.308	0	8953	N.D.	18.714 #
9) L2 AR-1221-2	0.000	4.401	0	23555	N.D.	65.456 #
10) L2 AR-1221-3	0.000	4.490	0	30023	N.D.	26.843 #
11) L3 AR-1232-1	0.000	4.490	0	30023	N.D.	32.404 #
12) L3 AR-1232-2	0.000	5.300f	0	28482	N.D.	33.194 #
13) L3 AR-1232-3	0.000	5.510	0	22157	N.D.	48.799 #
16) L4 AR-1242-1	0.000	5.300	0	28482	N.D.	27.497 #
17) L4 AR-1242-2	0.000	5.300f	0	28482	N.D.	18.426 #
18) L4 AR-1242-3	0.000	5.510	0	22157	N.D.	26.316 #
20) L4 AR-1242-5	7.056	6.170	119964	63434	138.306	71.328 #
21) L5 AR-1248-1	0.000	5.300	0	28482	N.D.	36.400 #
24) L5 AR-1248-4	7.017	0.000	120712	0	84.379	N.D. #
25) L5 AR-1248-5	7.056	6.213	119964	31762	80.844	25.316 #
26) L6 AR-1254-1	7.017f	6.170	120712	63434	77.716	30.689 #
27) L6 AR-1254-2	7.213	6.328	99428	72270	43.224	40.313
28) L6 AR-1254-3	7.600	6.766	359809	382438	147.770	133.813
29) L6 AR-1254-4	7.886	6.987	118027	36574	76.680	26.466 #
30) L6 AR-1254-5	8.306	7.415	509997	803654	297.572	337.810
31) L7 AR-1260-1	7.760	6.883	364611	451920	210.381	238.373
32) L7 AR-1260-2	8.024	7.081	645973	852652	314.404	391.956
33) L7 AR-1260-3	8.390	7.238	1956738	784332	1121.367	369.155 #
34) L7 AR-1260-4	8.618	7.716	1189475	1375980	660.083	774.500
35) L7 AR-1260-5	8.931	7.965	3338073	2571911	928.556	672.310 #
36) L8 AR-1262-1	8.390	7.454	1956738	2001525	725.171	744.762
37) L8 AR-1262-2	8.931	7.965	3338073	2571911	823.155	616.811 #
38) L8 AR-1262-3	9.228	8.249	2405040	2091860	839.311	1154.631 #
39) L8 AR-1262-4	9.317	8.314	3012094	3461623	1235.585	1028.916
40) L8 AR-1262-5	9.940	8.810	2245465	1633158	1656.433	1246.570
41) L9 AR-1268-1	9.228	8.249	2405040	2091860	462.841	415.080
42) L9 AR-1268-2	9.317	8.314	3012094	3461623	618.814	677.042
43) L9 AR-1268-3	9.532	8.519	387166	927079	89.592	210.269 #
44) L9 AR-1268-4	9.940	8.810	2245465	1633158	1616.266	1117.519 #
45) L9 AR-1268-5	10.326	9.094	1624979	1692864	134.913	133.869

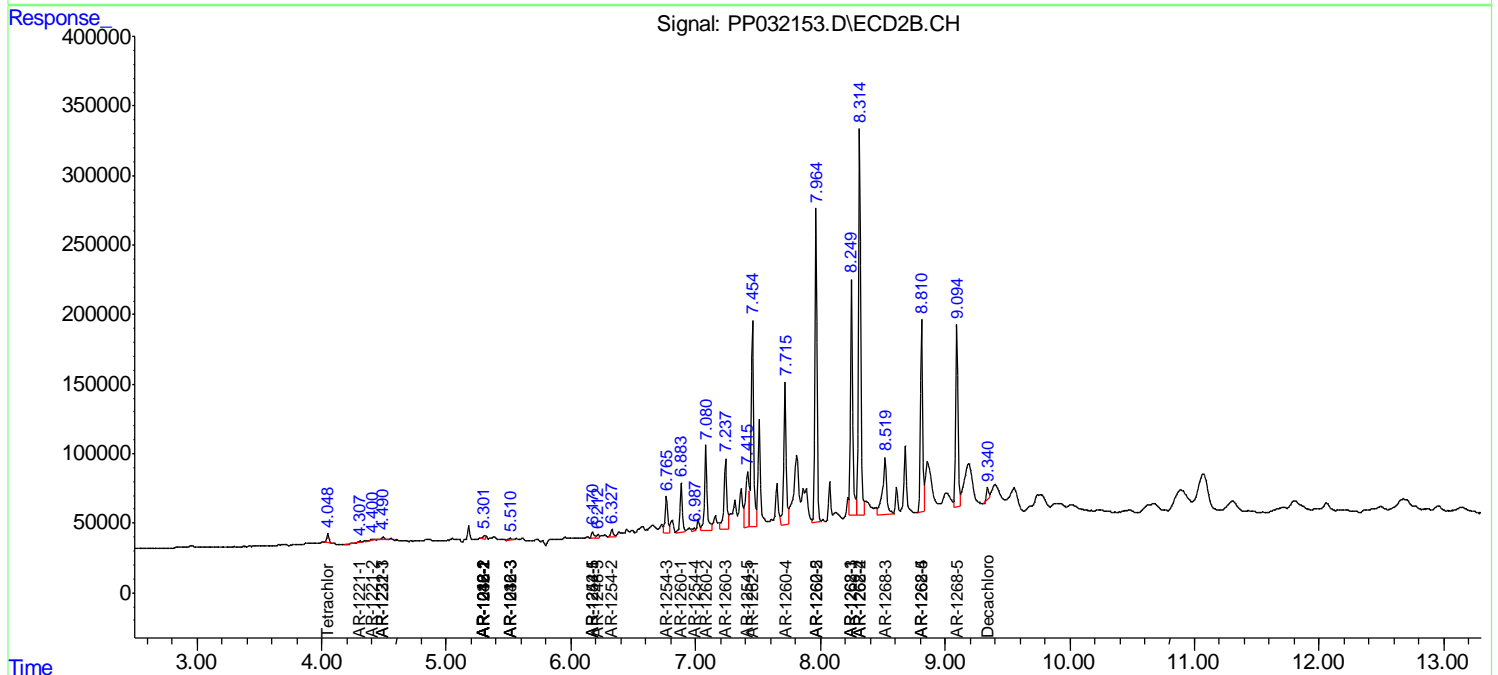
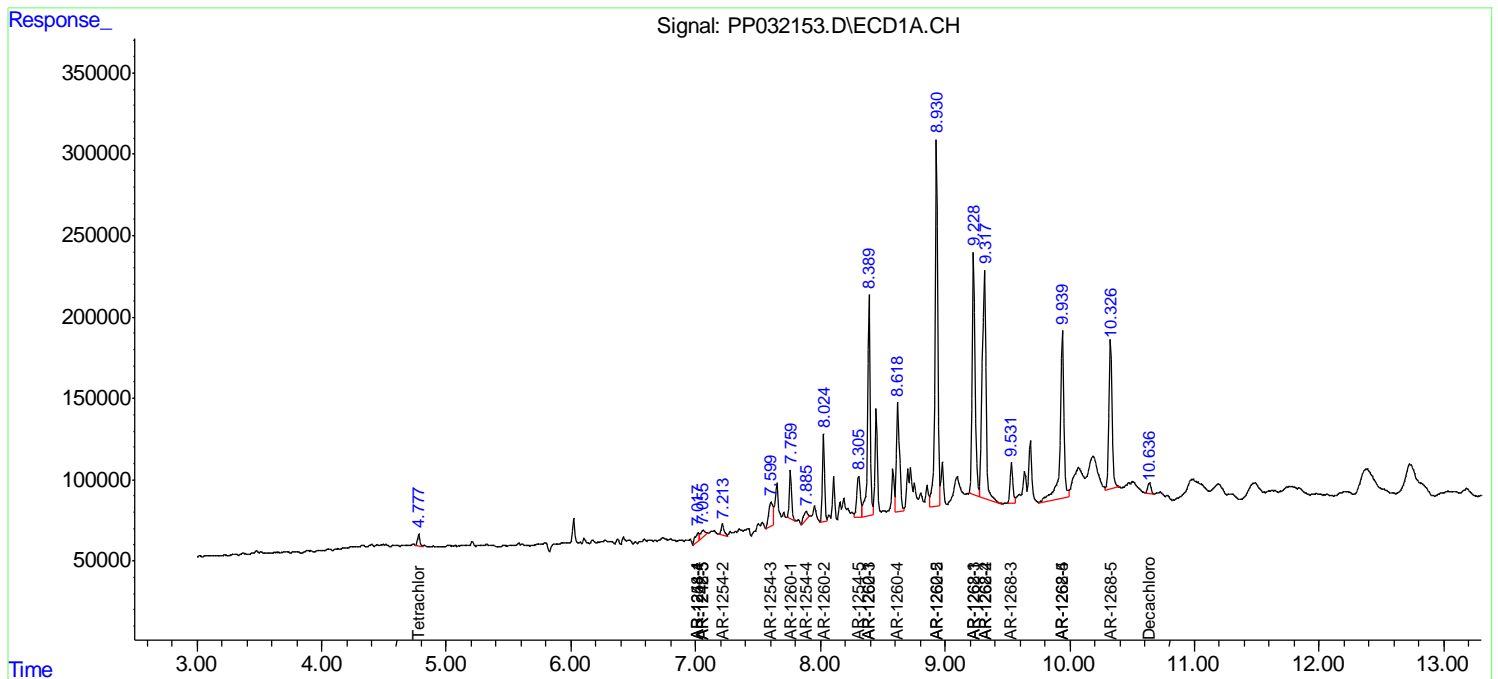
(f)=RT Delta > 1/2 Window (#)=Amounts differ by > 25% (m)=manual int.

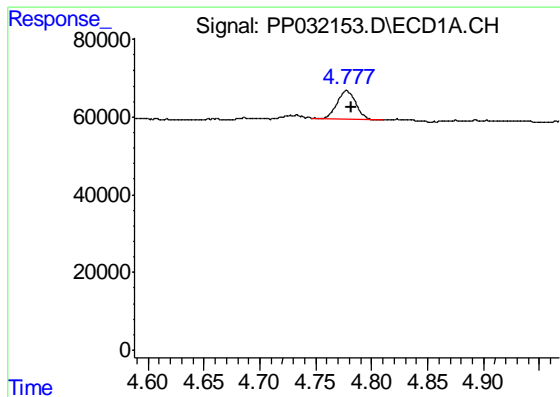
Data Path : Z:\pestpcbsrv\HPCHEM1\ECD_P\Data\PP121520\
 Data File : PP032153.D
 Signal(s) : Signal #1: ECD1A.CH Signal #2: ECD2B.CH
 Acq On : 15 Dec 2020 15:26
 Operator : DD\AJ
 Sample : L5081-16DL 10X
 Misc :
 ALS Vial : 22 Sample Multiplier: 1

Instrument :
 ECD_P
 ClientSampleId :
 WOOSPK-045-0204DL

Integration File signal 1: autoint1.e
 Integration File signal 2: autoint2.e
 Quant Time: Dec 16 04:40:33 2020
 Quant Method : Z:\pestpcbsrv\HPCHEM1\ECD_P\methods\PP121120.M
 Quant Title : GC EXTRACTABLES
 QLast Update : Sat Dec 12 05:15:55 2020
 Response via : Initial Calibration
 Integrator: ChemStation 6890 Scale Mode: Small noise peaks clipped

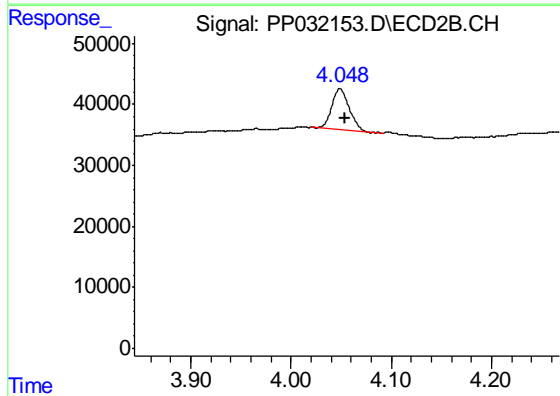
Volume Inj. : 2 µl
 Signal #1 Phase : ZB-MR1 Signal #2 Phase: ZB-MR2
 Signal #1 Info : 30Mx0.32mmx 0.50µ Signal #2 Info : 30M x 0.32mm x 0.25µm



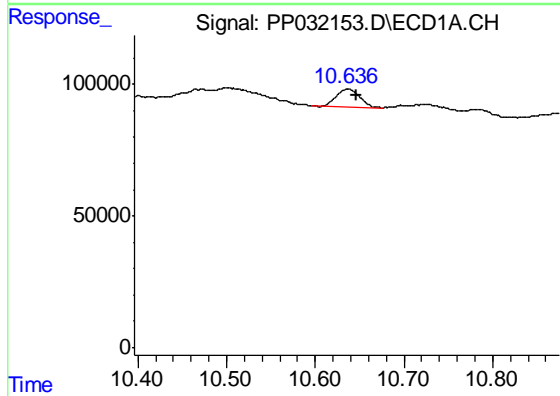


#1 Tetrachloro-m-xylene
 R.T.: 4.777 min
 Delta R.T.: -0.005 min
 Response: 86499
 Conc: 1.68 ng/ml

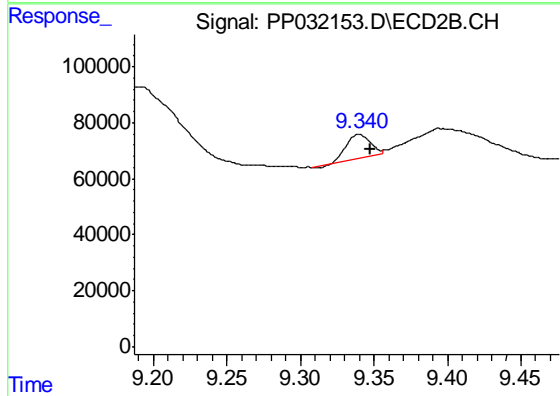
Instrument :
 ECD_P
 ClientSampleId :
 WOOSPK-045-0204DL



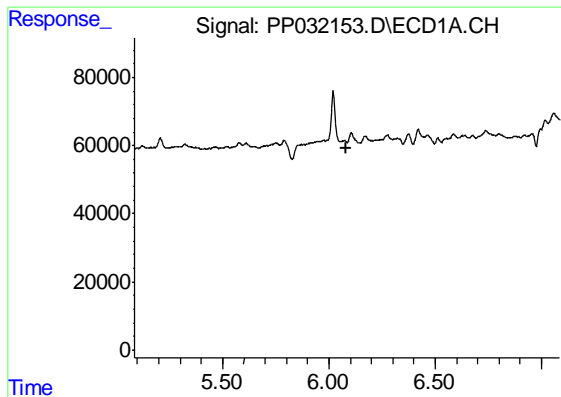
#1 Tetrachloro-m-xylene
 R.T.: 4.049 min
 Delta R.T.: -0.005 min
 Response: 81345
 Conc: 1.72 ng/ml



#2 Decachlorobiphenyl
 R.T.: 10.637 min
 Delta R.T.: -0.010 min
 Response: 117511
 Conc: 3.75 ng/ml



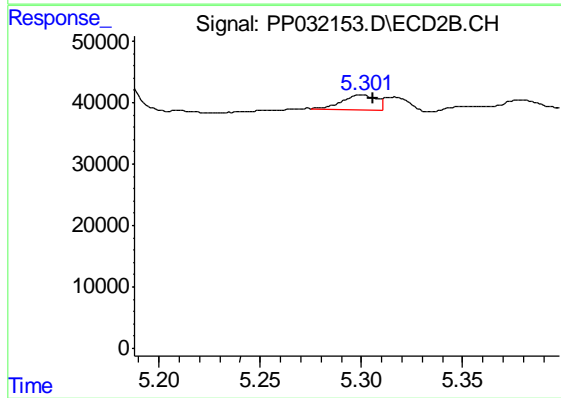
#2 Decachlorobiphenyl
 R.T.: 9.340 min
 Delta R.T.: -0.008 min
 Response: 94642
 Conc: 2.82 ng/ml



#3 AR-1016-1

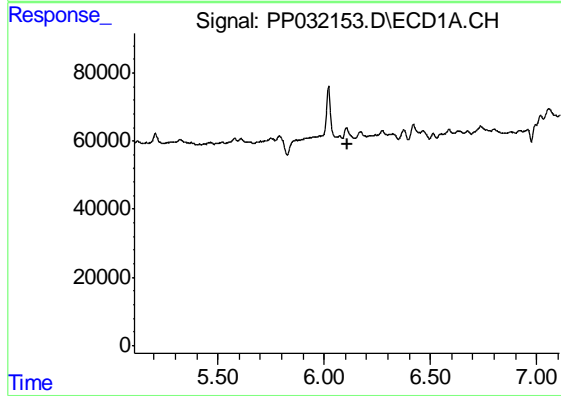
R.T.: 0.000 min
 Exp R.T. : 6.085 min
 Response: 0
 Conc: N.D.

Instrument :
 ECD_P
 ClientSampleId :
 WOOSPK-045-0204DL



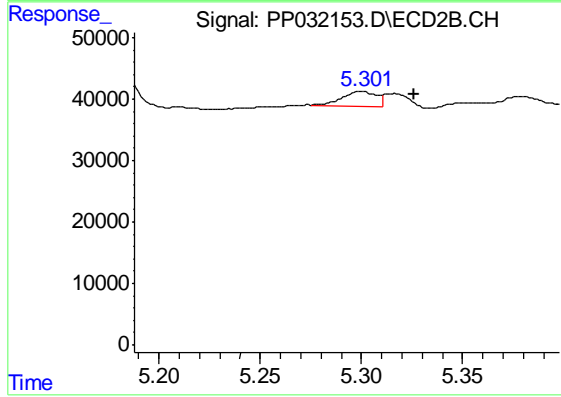
#3 AR-1016-1

R.T.: 5.300 min
 Delta R.T.: -0.006 min
 Response: 28482
 Conc: 21.79 ng/ml



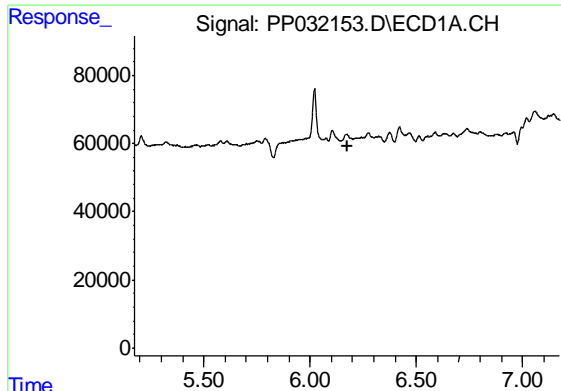
#4 AR-1016-2

R.T.: 0.000 min
 Exp R.T. : 6.108 min
 Response: 0
 Conc: N.D.



#4 AR-1016-2

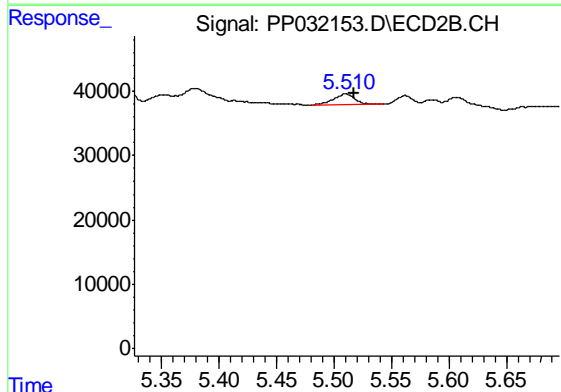
R.T.: 5.300 min
 Delta R.T.: -0.026 min
 Response: 28482
 Conc: 14.39 ng/ml



#5 AR-1016-3

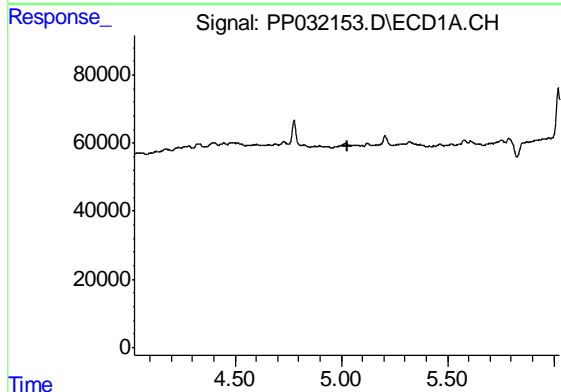
R.T.: 0.000 min
 Exp R.T. : 6.174 min
 Response: 0
 Conc: N.D.

Instrument :
 ECD_P
 ClientSampleId :
 WOOSPK-045-0204DL



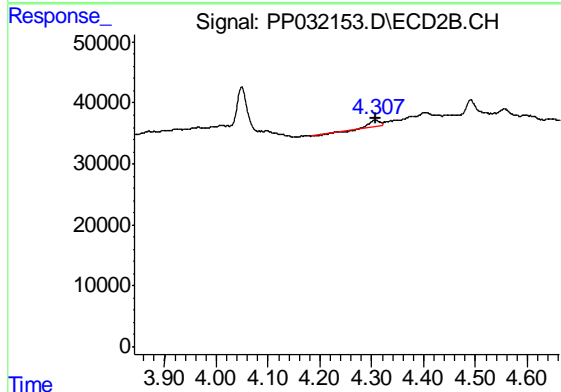
#5 AR-1016-3

R.T.: 5.510 min
 Delta R.T.: -0.008 min
 Response: 22157
 Conc: 20.72 ng/ml



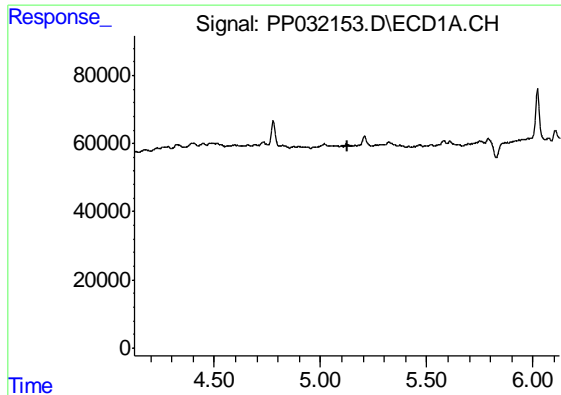
#8 AR-1221-1

R.T.: 0.000 min
 Exp R.T. : 5.027 min
 Response: 0
 Conc: N.D.



#8 AR-1221-1

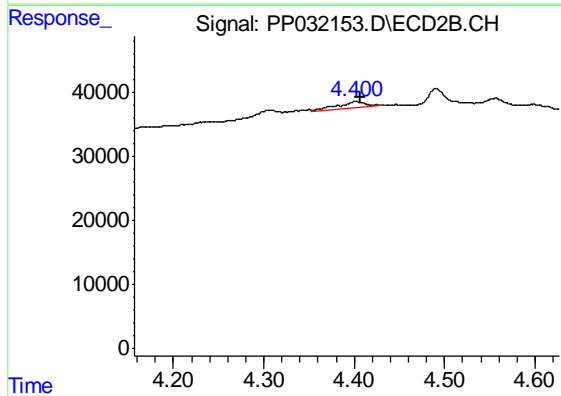
R.T.: 4.308 min
 Delta R.T.: 0.000 min
 Response: 8953
 Conc: 18.71 ng/ml



#9 AR-1221-2

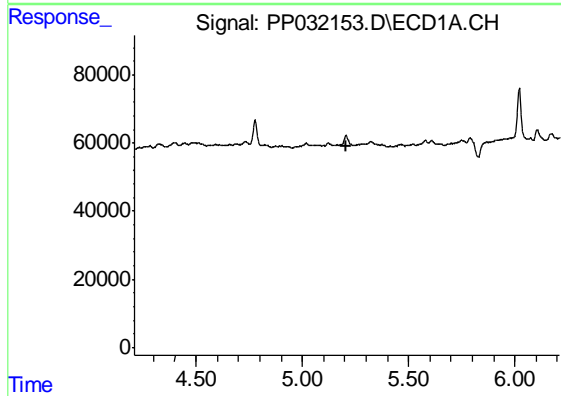
R.T.: 0.000 min
 Exp R.T. : 5.124 min
 Response: 0
 Conc: N.D.

Instrument :
 ECD_P
 ClientSampleId :
 WOOSPK-045-0204DL



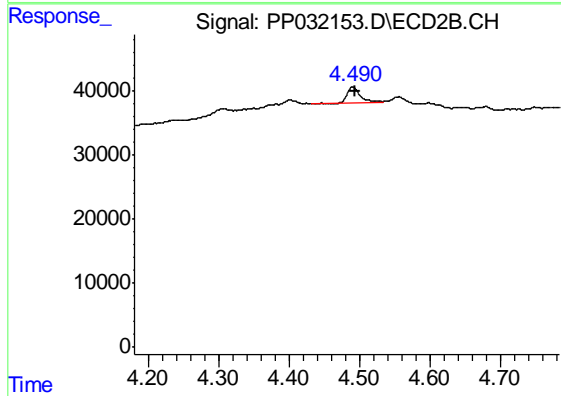
#9 AR-1221-2

R.T.: 4.401 min
 Delta R.T.: -0.006 min
 Response: 23555
 Conc: 65.46 ng/ml



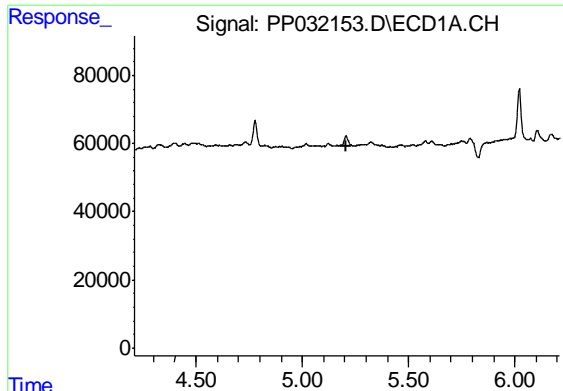
#10 AR-1221-3

R.T.: 0.000 min
 Exp R.T. : 5.210 min
 Response: 0
 Conc: N.D.



#10 AR-1221-3

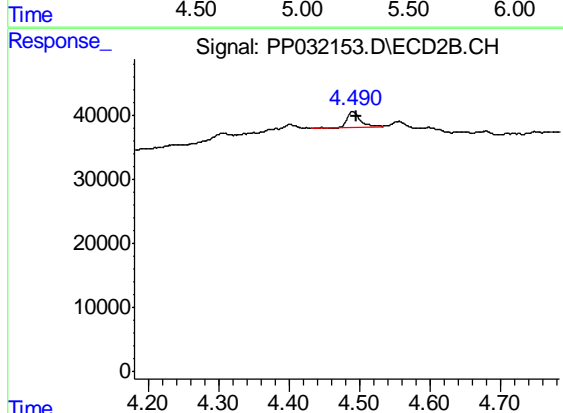
R.T.: 4.490 min
 Delta R.T.: -0.005 min
 Response: 30023
 Conc: 26.84 ng/ml



#11 AR-1232-1

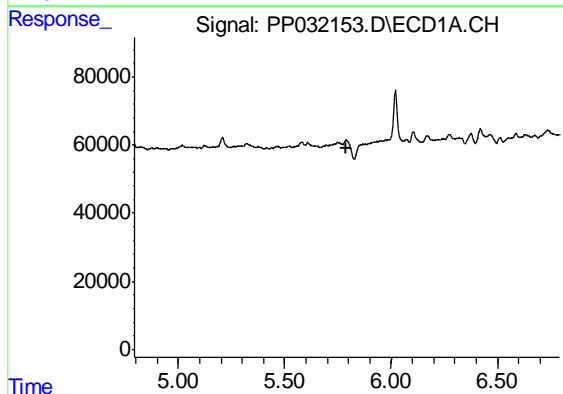
R.T.: 0.000 min
 Exp R.T. : 5.210 min
 Response: 0
 Conc: N.D.

Instrument :
 ECD_P
 ClientSampleId :
 WOOSPK-045-0204DL



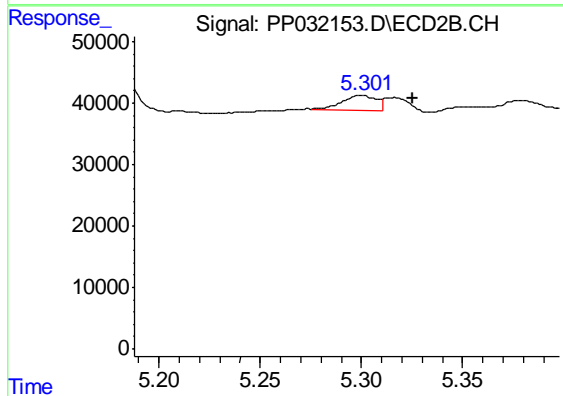
#11 AR-1232-1

R.T.: 4.490 min
 Delta R.T.: -0.005 min
 Response: 30023
 Conc: 32.40 ng/ml



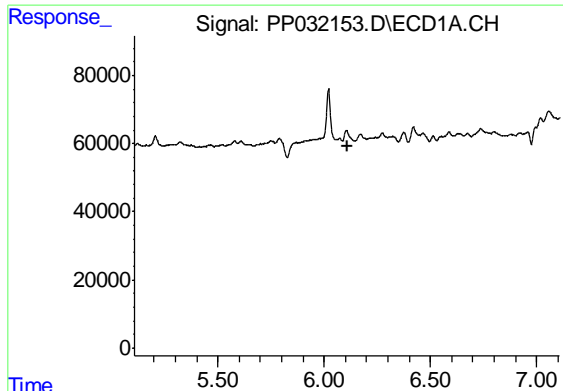
#12 AR-1232-2

R.T.: 0.000 min
 Exp R.T. : 5.792 min
 Response: 0
 Conc: N.D.



#12 AR-1232-2

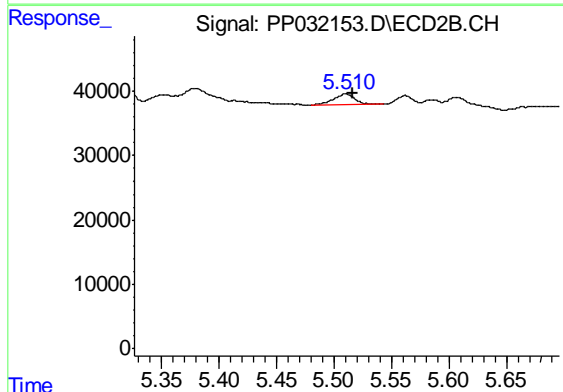
R.T.: 5.300 min
 Delta R.T.: -0.025 min
 Response: 28482
 Conc: 33.19 ng/ml



#13 AR-1232-3

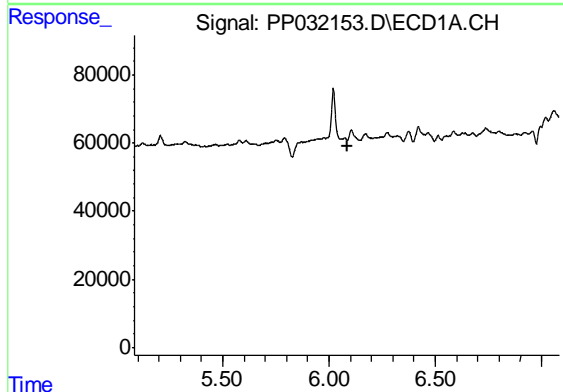
R.T.: 0.000 min
 Exp R.T. : 6.108 min
 Response: 0
 Conc: N.D.

Instrument :
 ECD_P
 ClientSampleId :
 WOOSPK-045-0204DL



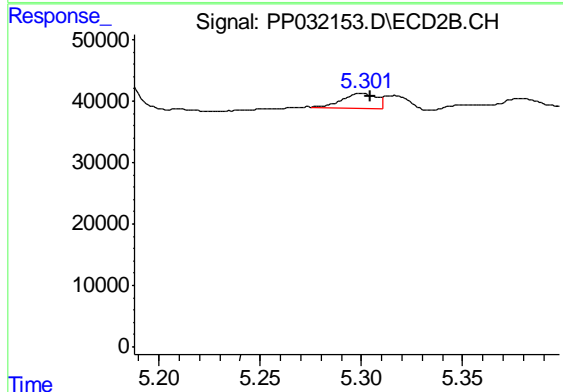
#13 AR-1232-3

R.T.: 5.510 min
 Delta R.T.: -0.007 min
 Response: 22157
 Conc: 48.80 ng/ml



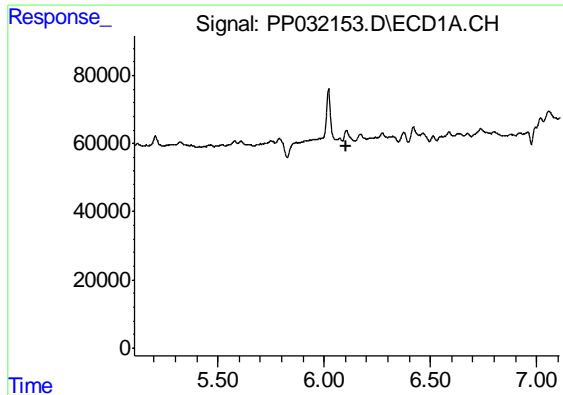
#16 AR-1242-1

R.T.: 0.000 min
 Exp R.T. : 6.084 min
 Response: 0
 Conc: N.D.



#16 AR-1242-1

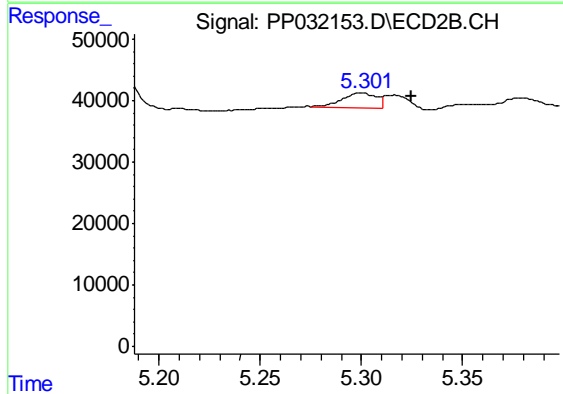
R.T.: 5.300 min
 Delta R.T.: -0.005 min
 Response: 28482
 Conc: 27.50 ng/ml



#17 AR-1242-2

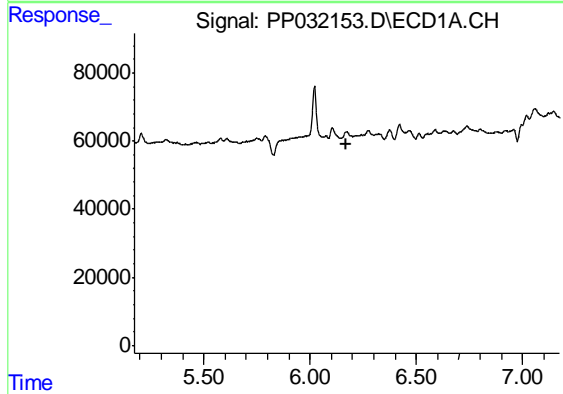
R.T.: 0.000 min
 Exp R.T. : 6.107 min
 Response: 0
 Conc: N.D.

Instrument :
 ECD_P
 ClientSampleId :
 WOOSPK-045-0204DL



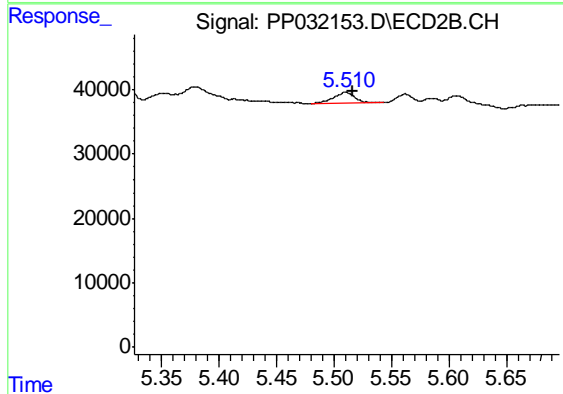
#17 AR-1242-2

R.T.: 5.300 min
 Delta R.T.: -0.025 min
 Response: 28482
 Conc: 18.43 ng/ml



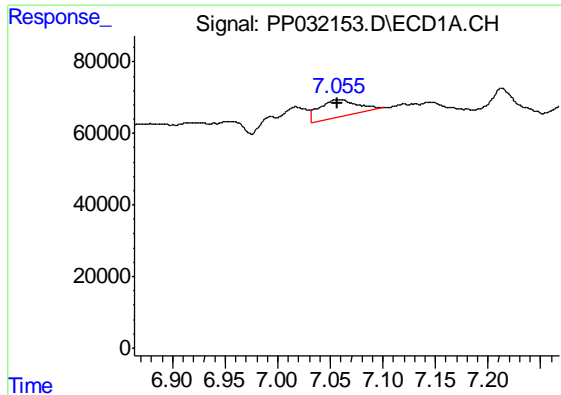
#18 AR-1242-3

R.T.: 0.000 min
 Exp R.T. : 6.173 min
 Response: 0
 Conc: N.D.



#18 AR-1242-3

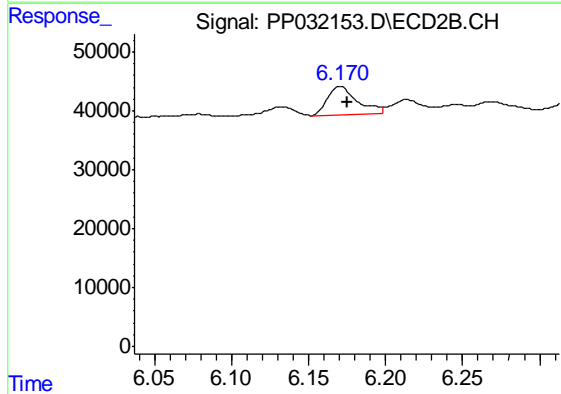
R.T.: 5.510 min
 Delta R.T.: -0.007 min
 Response: 22157
 Conc: 26.32 ng/ml



#20 AR-1242-5

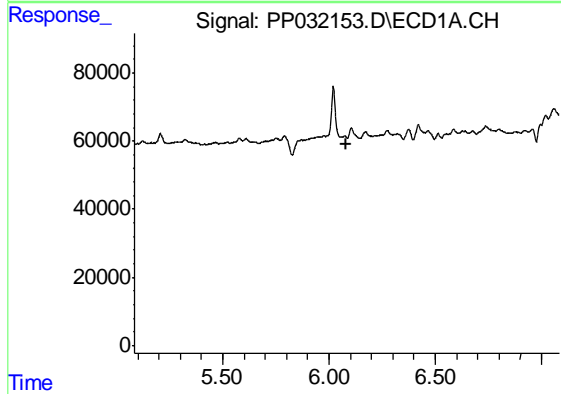
R.T.: 7.056 min
 Delta R.T.: -0.001 min
 Response: 119964
 Conc: 138.31 ng/ml

Instrument :
 ECD_P
 ClientSampleId :
 WOOSPK-045-0204DL



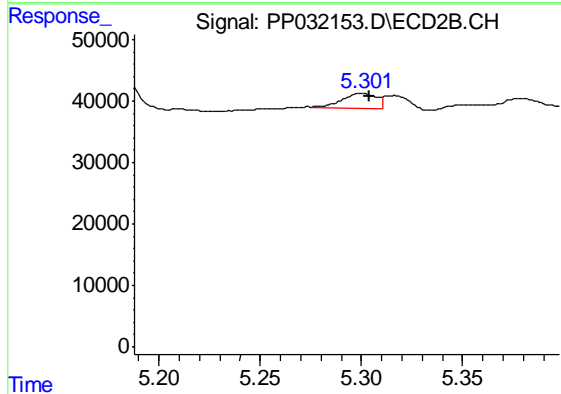
#20 AR-1242-5

R.T.: 6.170 min
 Delta R.T.: -0.005 min
 Response: 63434
 Conc: 71.33 ng/ml



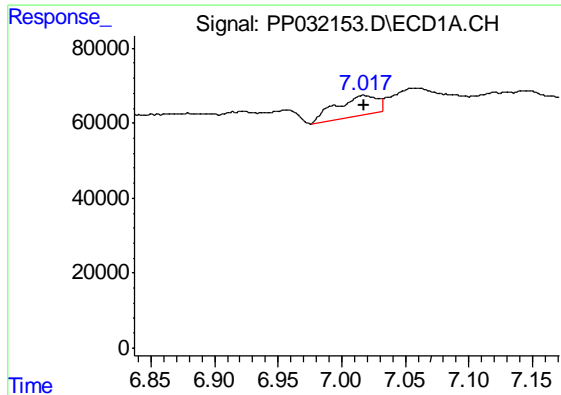
#21 AR-1248-1

R.T.: 0.000 min
 Exp R.T. : 6.084 min
 Response: 0
 Conc: N.D.



#21 AR-1248-1

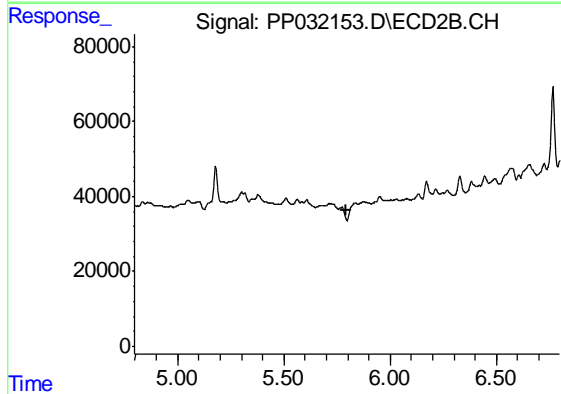
R.T.: 5.300 min
 Delta R.T.: -0.004 min
 Response: 28482
 Conc: 36.40 ng/ml



#24 AR-1248-4

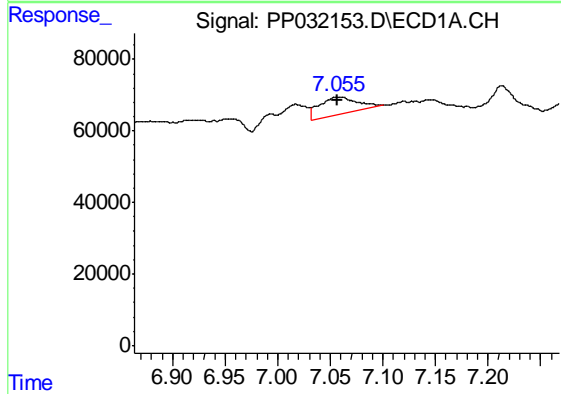
R.T.: 7.017 min
 Delta R.T.: -0.001 min
 Response: 120712
 Conc: 84.38 ng/ml

Instrument :
 ECD_P
 ClientSampleId :
 WOOSPK-045-0204DL



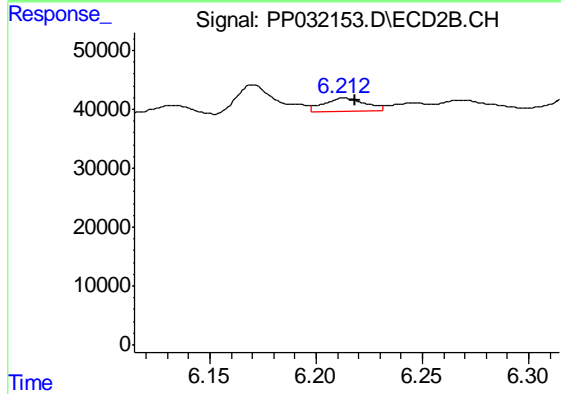
#24 AR-1248-4

R.T.: 0.000 min
 Exp R.T. : 5.796 min
 Response: 0
 Conc: N.D.



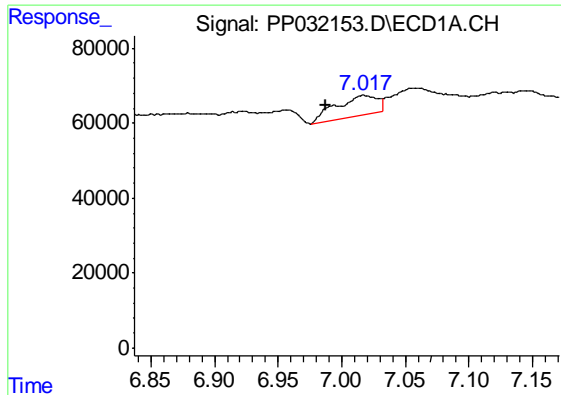
#25 AR-1248-5

R.T.: 7.056 min
 Delta R.T.: -0.001 min
 Response: 119964
 Conc: 80.84 ng/ml



#25 AR-1248-5

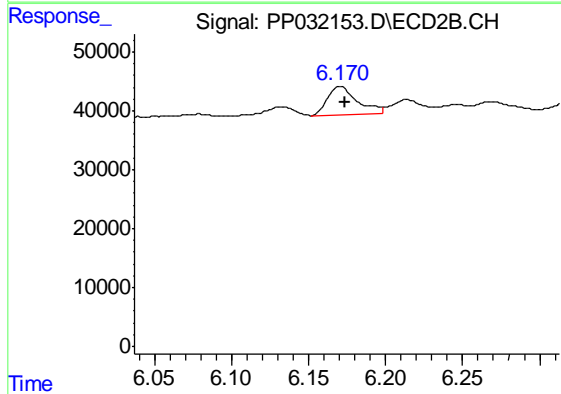
R.T.: 6.213 min
 Delta R.T.: -0.005 min
 Response: 31762
 Conc: 25.32 ng/ml



#26 AR-1254-1

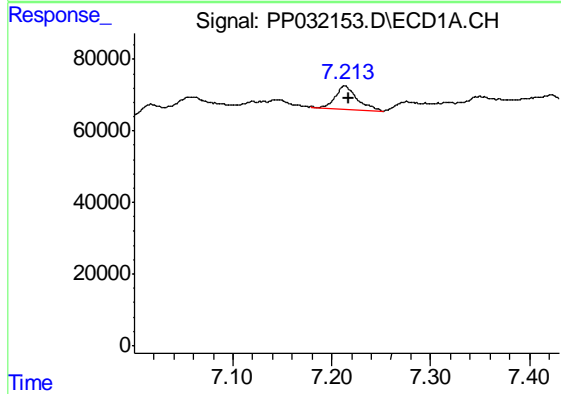
R.T.: 7.017 min
 Delta R.T.: 0.029 min
 Response: 120712
 Conc: 77.72 ng/ml

Instrument :
 ECD_P
 ClientSampleId :
 WOOSPK-045-0204DL



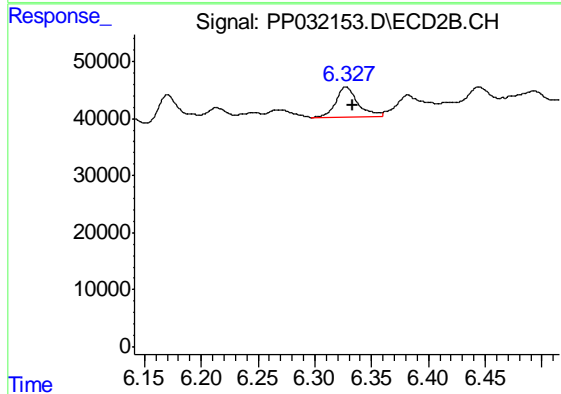
#26 AR-1254-1

R.T.: 6.170 min
 Delta R.T.: -0.004 min
 Response: 63434
 Conc: 30.69 ng/ml



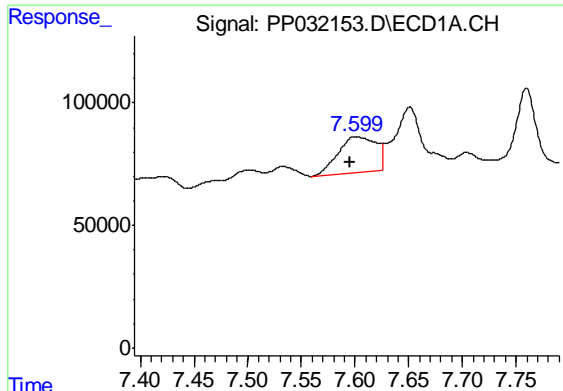
#27 AR-1254-2

R.T.: 7.213 min
 Delta R.T.: -0.004 min
 Response: 99428
 Conc: 43.22 ng/ml



#27 AR-1254-2

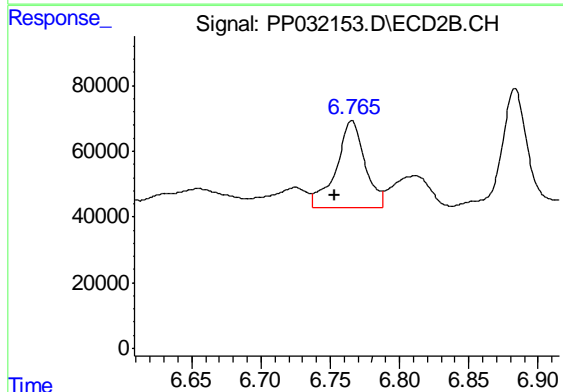
R.T.: 6.328 min
 Delta R.T.: -0.006 min
 Response: 72270
 Conc: 40.31 ng/ml



#28 AR-1254-3

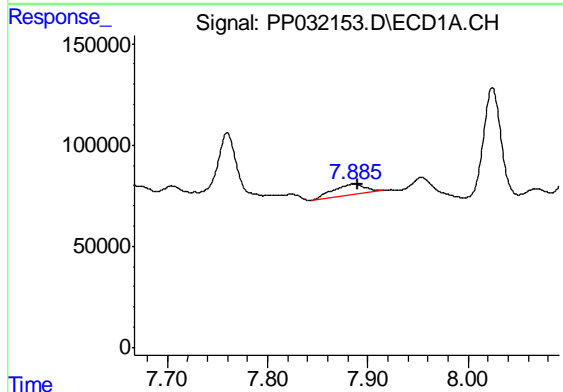
R.T.: 7.600 min
 Delta R.T.: 0.005 min
 Response: 359809
 Conc: 147.77 ng/ml

Instrument :
 ECD_P
 ClientSampleId :
 WOOSPK-045-0204DL



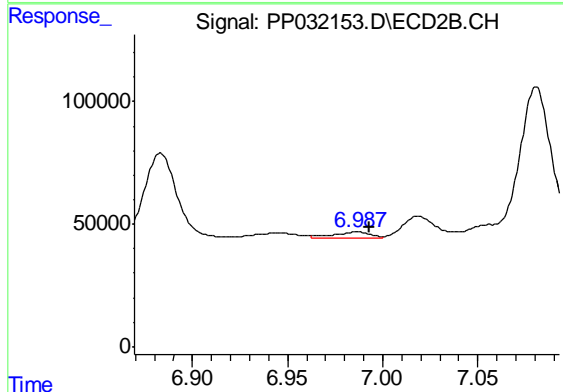
#28 AR-1254-3

R.T.: 6.766 min
 Delta R.T.: 0.012 min
 Response: 382438
 Conc: 133.81 ng/ml



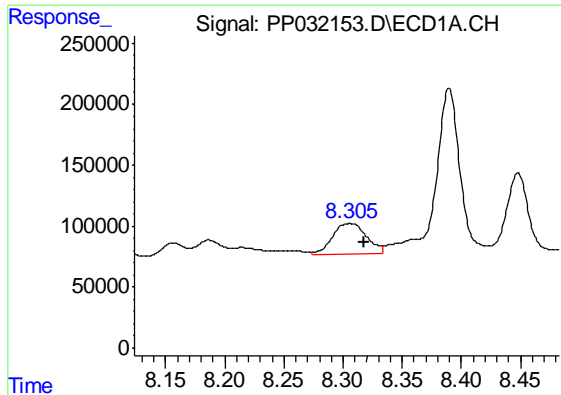
#29 AR-1254-4

R.T.: 7.886 min
 Delta R.T.: -0.004 min
 Response: 118027
 Conc: 76.68 ng/ml



#29 AR-1254-4

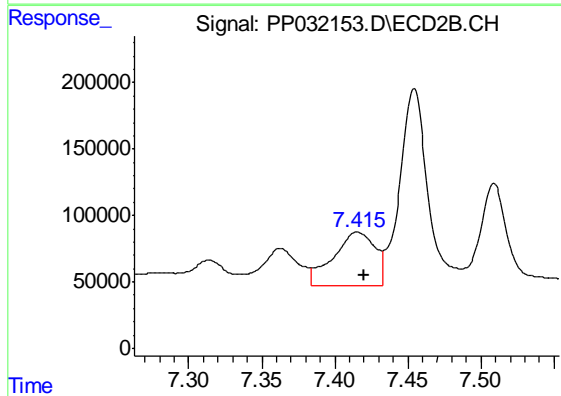
R.T.: 6.987 min
 Delta R.T.: -0.006 min
 Response: 36574
 Conc: 26.47 ng/ml



#30 AR-1254-5

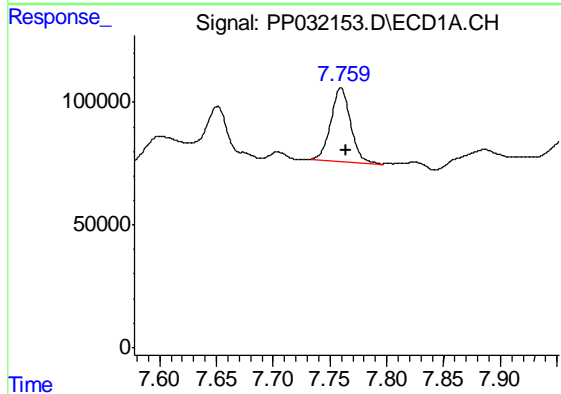
R.T.: 8.306 min
Delta R.T.: -0.012 min
Response: 509997
Conc: 297.57 ng/ml

Instrument :
ECD_P
ClientSampleId :
WOOSPK-045-0204DL



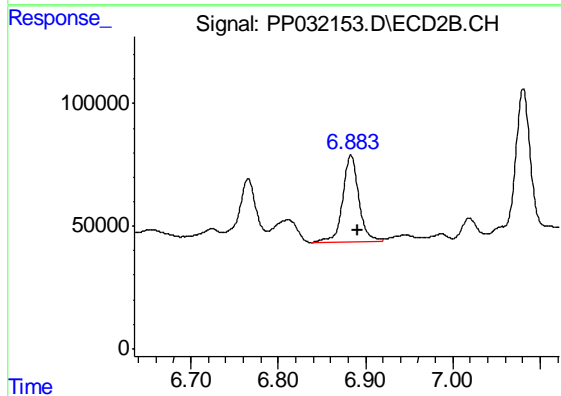
#30 AR-1254-5

R.T.: 7.415 min
Delta R.T.: -0.005 min
Response: 803654
Conc: 337.81 ng/ml



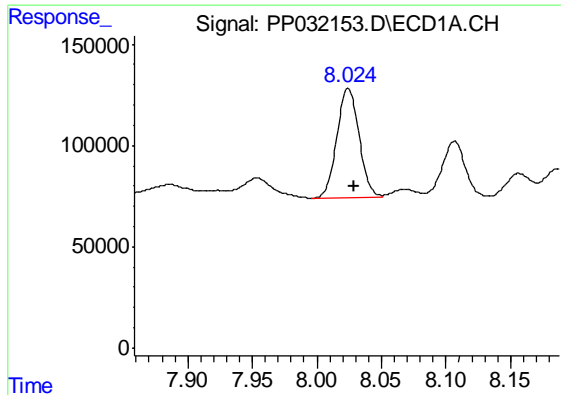
#31 AR-1260-1

R.T.: 7.760 min
Delta R.T.: -0.005 min
Response: 364611
Conc: 210.38 ng/ml



#31 AR-1260-1

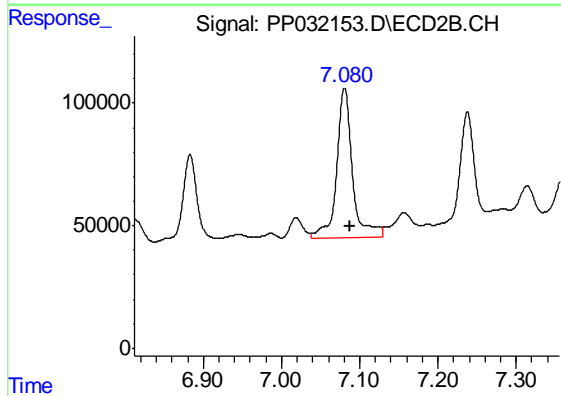
R.T.: 6.883 min
Delta R.T.: -0.007 min
Response: 451920
Conc: 238.37 ng/ml



#32 AR-1260-2

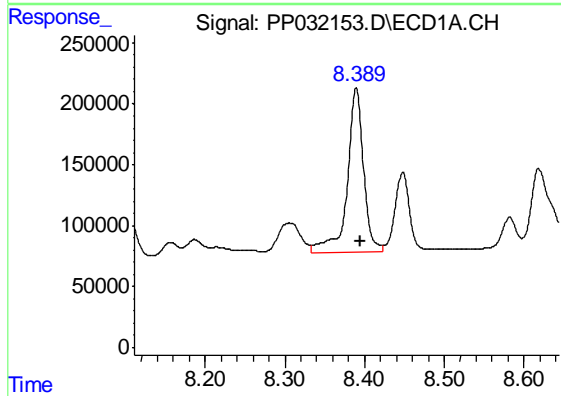
R.T.: 8.024 min
Delta R.T.: -0.005 min
Response: 645973
Conc: 314.40 ng/ml

Instrument :
ECD_P
ClientSampleId :
WOOSPK-045-0204DL



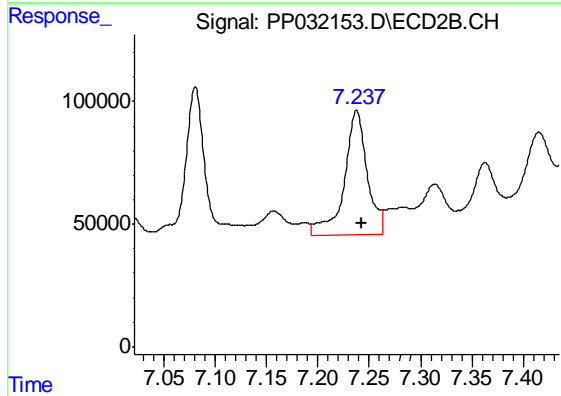
#32 AR-1260-2

R.T.: 7.081 min
Delta R.T.: -0.007 min
Response: 852652
Conc: 391.96 ng/ml



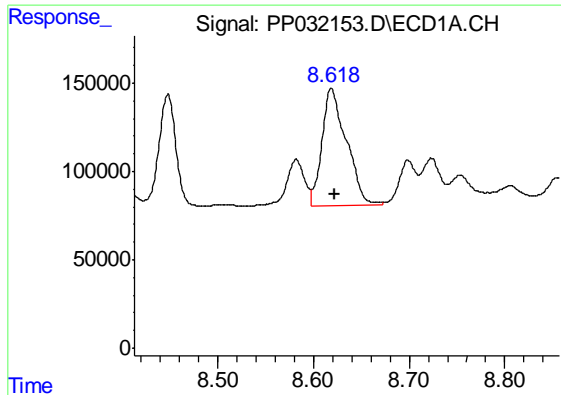
#33 AR-1260-3

R.T.: 8.390 min
Delta R.T.: -0.005 min
Response: 1956738
Conc: 1121.37 ng/ml



#33 AR-1260-3

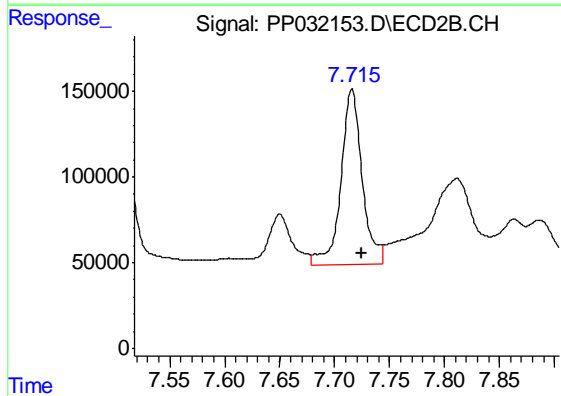
R.T.: 7.238 min
Delta R.T.: -0.005 min
Response: 784332
Conc: 369.15 ng/ml



#34 AR-1260-4

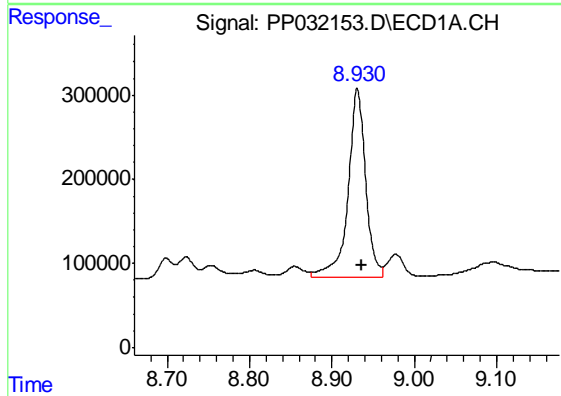
R.T.: 8.618 min
 Delta R.T.: -0.004 min
 Response: 1189475
 Conc: 660.08 ng/ml

Instrument :
 ECD_P
 ClientSampleId :
 WOOSPK-045-0204DL



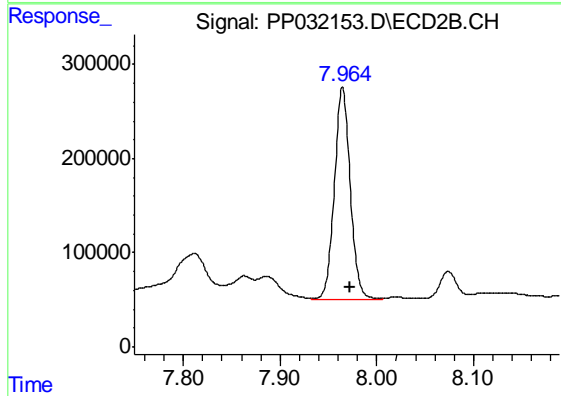
#34 AR-1260-4

R.T.: 7.716 min
 Delta R.T.: -0.009 min
 Response: 1375980
 Conc: 774.50 ng/ml



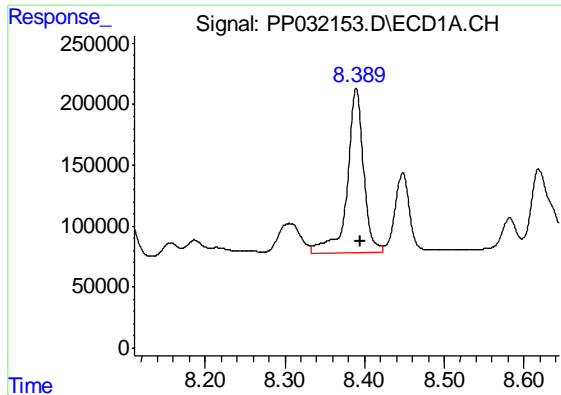
#35 AR-1260-5

R.T.: 8.931 min
 Delta R.T.: -0.006 min
 Response: 3338073
 Conc: 928.56 ng/ml



#35 AR-1260-5

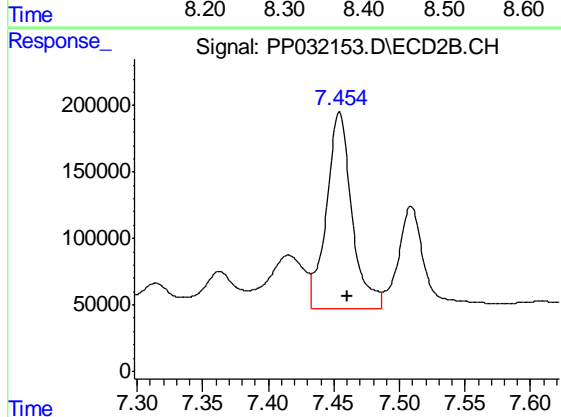
R.T.: 7.965 min
 Delta R.T.: -0.007 min
 Response: 2571911
 Conc: 672.31 ng/ml



#36 AR-1262-1

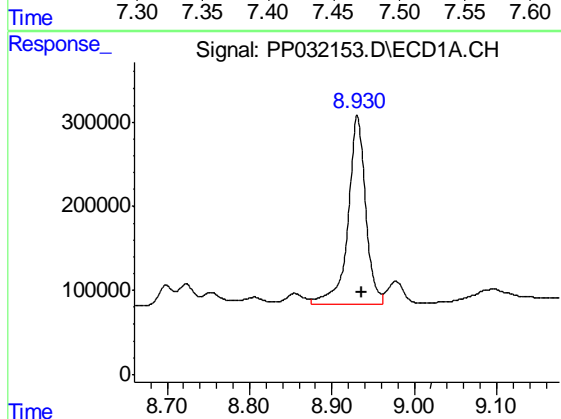
R.T.: 8.390 min
Delta R.T.: -0.004 min
Response: 1956738
Conc: 725.17 ng/ml

Instrument :
ECD_P
ClientSampleId :
WOOSPK-045-0204DL



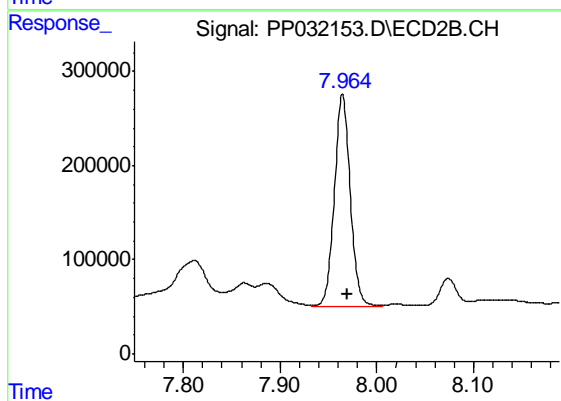
#36 AR-1262-1

R.T.: 7.454 min
Delta R.T.: -0.006 min
Response: 2001525
Conc: 744.76 ng/ml



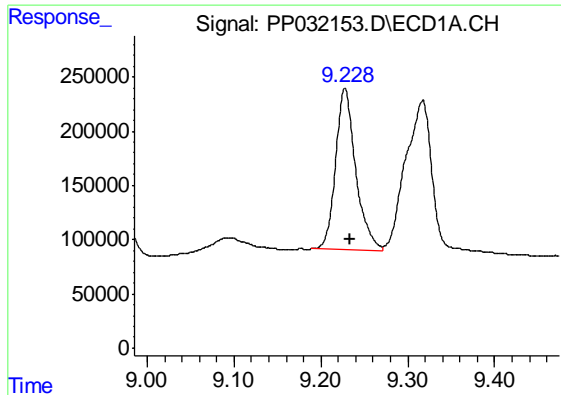
#37 AR-1262-2

R.T.: 8.931 min
Delta R.T.: -0.005 min
Response: 3338073
Conc: 823.16 ng/ml



#37 AR-1262-2

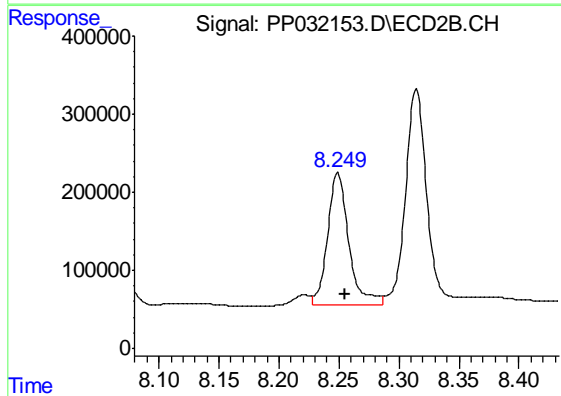
R.T.: 7.965 min
Delta R.T.: -0.005 min
Response: 2571911
Conc: 616.81 ng/ml



#38 AR-1262-3

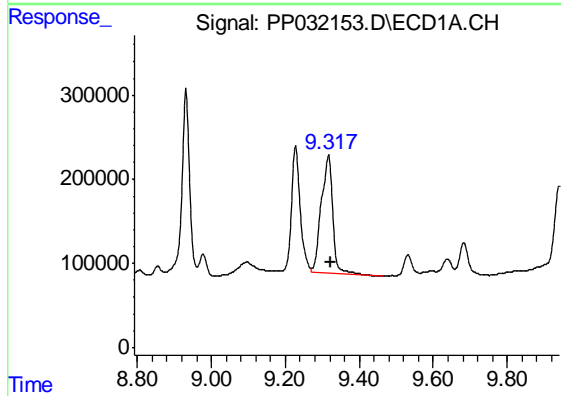
R.T.: 9.228 min
 Delta R.T.: -0.006 min
 Response: 2405040
 Conc: 839.31 ng/ml

Instrument :
 ECD_P
 ClientSampled :
 WOOSPK-045-0204DL



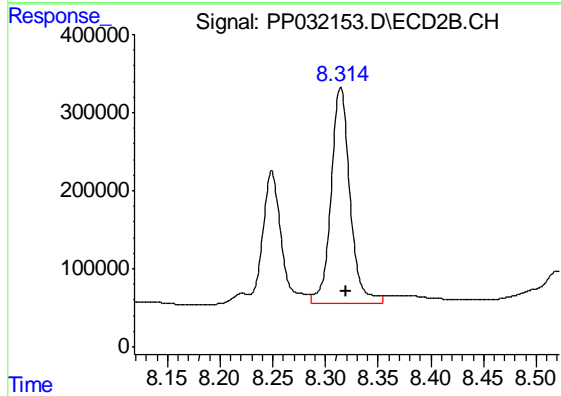
#38 AR-1262-3

R.T.: 8.249 min
 Delta R.T.: -0.006 min
 Response: 2091860
 Conc: 1154.63 ng/ml



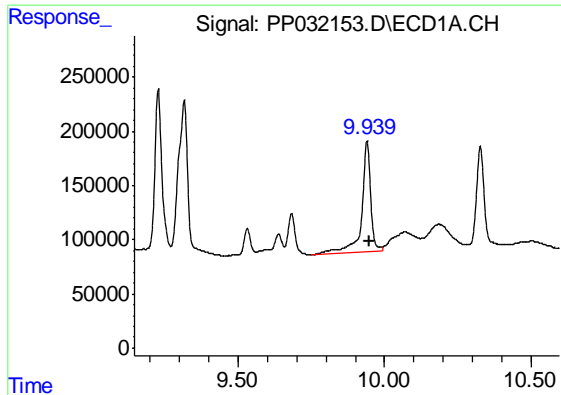
#39 AR-1262-4

R.T.: 9.317 min
 Delta R.T.: -0.005 min
 Response: 3012094
 Conc: 1235.58 ng/ml



#39 AR-1262-4

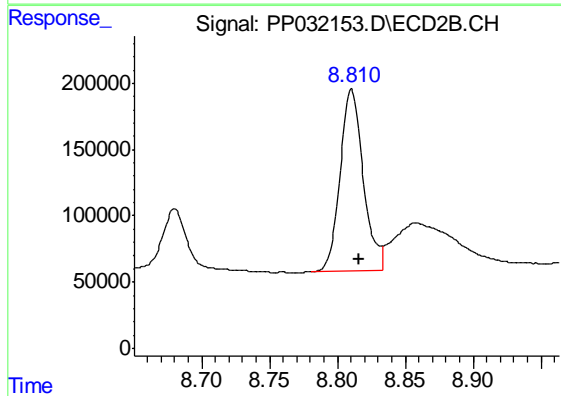
R.T.: 8.314 min
 Delta R.T.: -0.005 min
 Response: 3461623
 Conc: 1028.92 ng/ml



#40 AR-1262-5

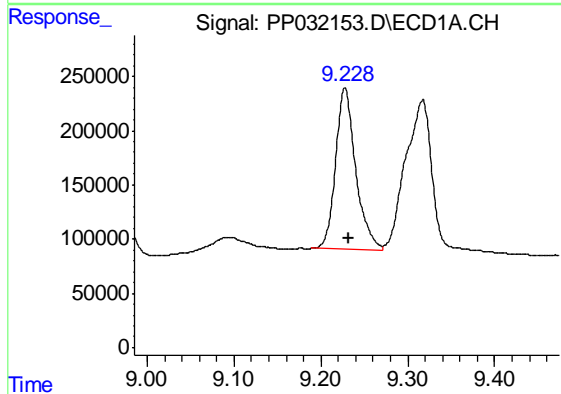
R.T.: 9.940 min
 Delta R.T.: -0.007 min
 Response: 2245465
 Conc: 1656.43 ng/ml

Instrument :
 ECD_P
 ClientSampleId :
 WOOSPK-045-0204DL



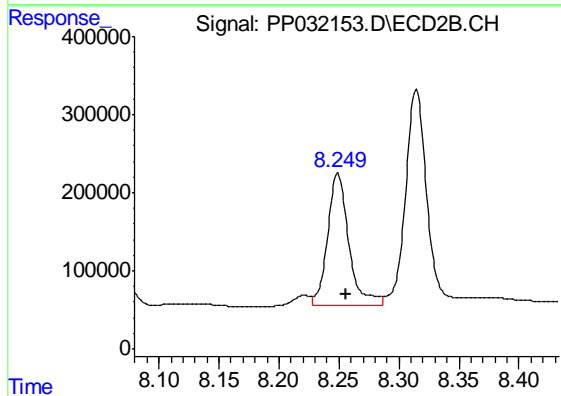
#40 AR-1262-5

R.T.: 8.810 min
 Delta R.T.: -0.006 min
 Response: 1633158
 Conc: 1246.57 ng/ml



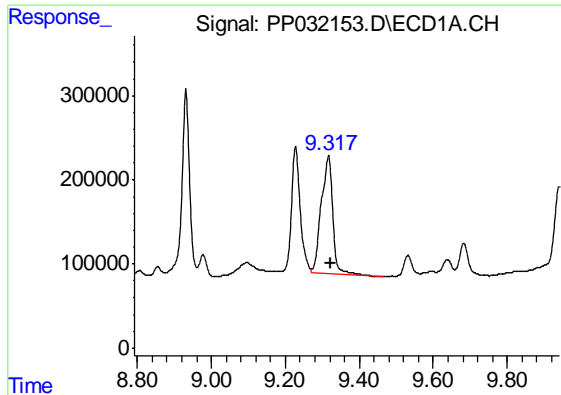
#41 AR-1268-1

R.T.: 9.228 min
 Delta R.T.: -0.005 min
 Response: 2405040
 Conc: 462.84 ng/ml



#41 AR-1268-1

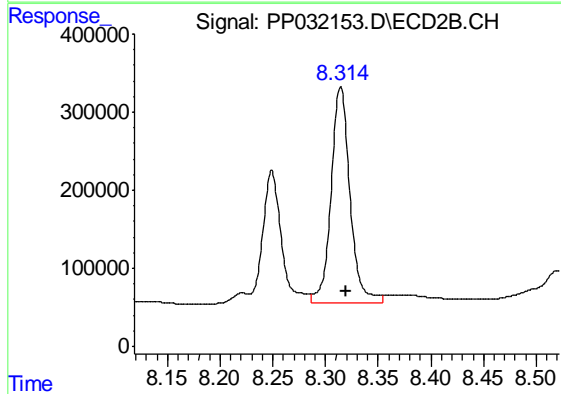
R.T.: 8.249 min
 Delta R.T.: -0.007 min
 Response: 2091860
 Conc: 415.08 ng/ml



#42 AR-1268-2

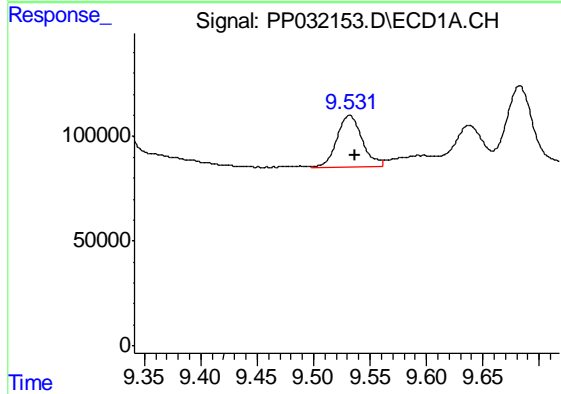
R.T.: 9.317 min
Delta R.T.: -0.006 min
Response: 3012094
Conc: 618.81 ng/ml

Instrument :
ECD_P
ClientSampleId :
WOOSPK-045-0204DL



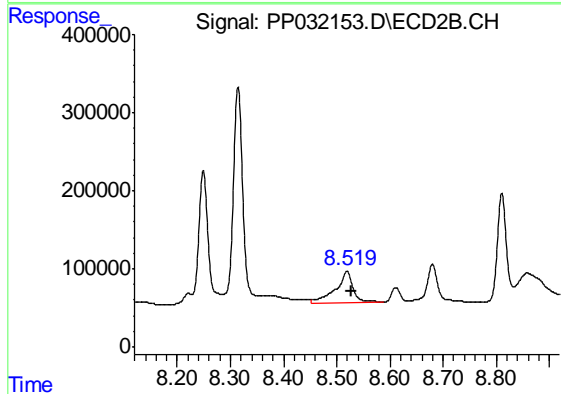
#42 AR-1268-2

R.T.: 8.314 min
Delta R.T.: -0.006 min
Response: 3461623
Conc: 677.04 ng/ml



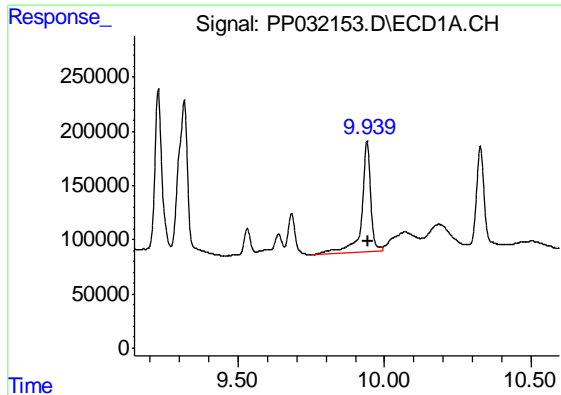
#43 AR-1268-3

R.T.: 9.532 min
Delta R.T.: -0.005 min
Response: 387166
Conc: 89.59 ng/ml



#43 AR-1268-3

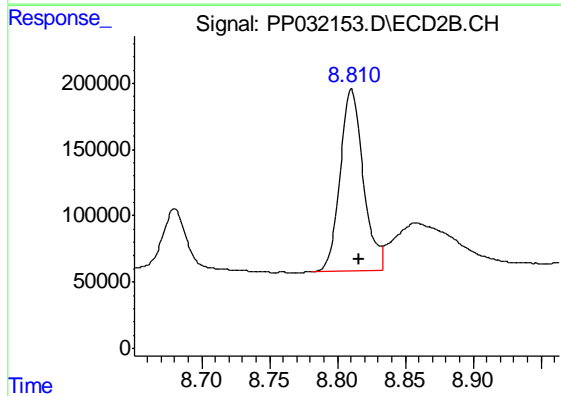
R.T.: 8.519 min
Delta R.T.: -0.008 min
Response: 927079
Conc: 210.27 ng/ml



#44 AR-1268-4

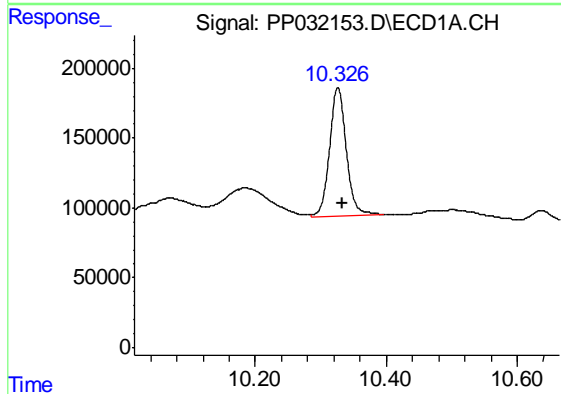
R.T.: 9.940 min
 Delta R.T.: -0.004 min
 Response: 2245465
 Conc: 1616.27 ng/ml

Instrument :
 ECD_P
 ClientSampleId :
 WOOSPK-045-0204DL



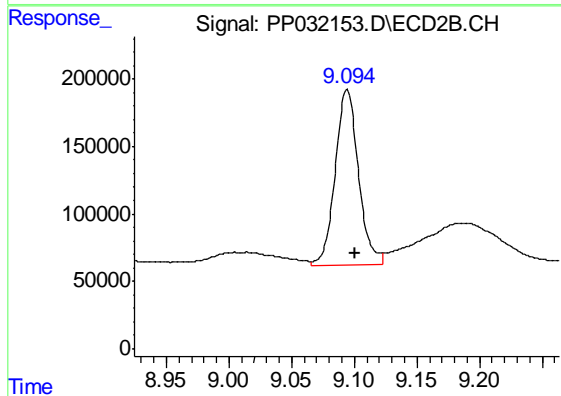
#44 AR-1268-4

R.T.: 8.810 min
 Delta R.T.: -0.006 min
 Response: 1633158
 Conc: 1117.52 ng/ml



#45 AR-1268-5

R.T.: 10.326 min
 Delta R.T.: -0.006 min
 Response: 1624979
 Conc: 134.91 ng/ml



#45 AR-1268-5

R.T.: 9.094 min
 Delta R.T.: -0.007 min
 Response: 1692864
 Conc: 133.87 ng/ml