

Data Path : Z:\pestpcbsrv\HPCHEM1\ECD_P\Data\PP121520\
 Data File : PP032155.D
 Signal(s) : Signal #1: ECD1A.CH Signal #2: ECD2B.CH
 Acq On : 15 Dec 2020 15:59
 Operator : DD\AJ
 Sample : L5081-18DL 50X
 Misc :
 ALS Vial : 24 Sample Multiplier: 1

Instrument :
 ECD_P
ClientSampleId :
 WOOSPK-033-0204DL

Integration File signal 1: autoint1.e
 Integration File signal 2: autoint2.e
 Quant Time: Dec 16 04:42:07 2020
 Quant Method : Z:\pestpcbsrv\HPCHEM1\ECD_P\methods\PP121120.M
 Quant Title : GC EXTRACTABLES
 QLast Update : Sat Dec 12 05:15:55 2020
 Response via : Initial Calibration
 Integrator: ChemStation 6890 Scale Mode: Small noise peaks clipped

Volume Inj. : 2 µl
 Signal #1 Phase : ZB-MR1 Signal #2 Phase: ZB-MR2
 Signal #1 Info : 30Mx0.32mmx 0.50µ Signal #2 Info : 30M x 0.32mm x 0.25µm

Compound	RT#1	RT#2	Resp#1	Resp#2	ng/ml	ng/ml

System Monitoring Compounds						
2) SA Decachlor...	10.638	9.340	56864	41577	1.813	1.240 #
Target Compounds						
20) L4 AR-1242-5	0.000	6.169	0	42711	N.D.	48.026 #
26) L6 AR-1254-1	0.000	6.169	0	42711	N.D.	20.663 #
27) L6 AR-1254-2	7.214	6.328	71427	45907	31.051	25.608
28) L6 AR-1254-3	7.595	6.765	87591	251620	35.973	88.040 #
29) L6 AR-1254-4	7.885	6.986	122228	11494	79.410	8.317 #
30) L6 AR-1254-5	8.305	7.414	349417	419606	203.877	176.378
31) L7 AR-1260-1	7.759	6.883	358940	360471	207.110	190.137
32) L7 AR-1260-2	8.024	7.080	520046	560696	253.114	257.747
33) L7 AR-1260-3	8.389	7.237	1383482	471433	792.845	221.885 #
34) L7 AR-1260-4	8.619	7.715	887026	956482	492.243	538.377
35) L7 AR-1260-5	8.931	7.964	2252506	2060621	626.583	538.656
36) L8 AR-1262-1	8.389	7.454	1383482	1376565	512.721	512.216
37) L8 AR-1262-2	8.931	7.964	2252506	2060621	555.459	494.190
38) L8 AR-1262-3	9.226	8.249	1757348	1499124	613.280	827.462 #
39) L8 AR-1262-4	9.317	8.315	2279817	2622884	935.199	779.613
40) L8 AR-1262-5	9.939	8.810	1526646	1270406	1126.175	969.685
41) L9 AR-1268-1	9.226	8.249	1757348	1499124	338.195	297.466
42) L9 AR-1268-2	9.317	8.315	2279817	2622884	468.373	512.997
43) L9 AR-1268-3	9.531	8.519	220580	476931	51.043	108.172 #
44) L9 AR-1268-4	9.939	8.810	1526646	1270406	1098.867	869.299
45) L9 AR-1268-5	10.325	9.094	1131537	1175697	93.945	92.972

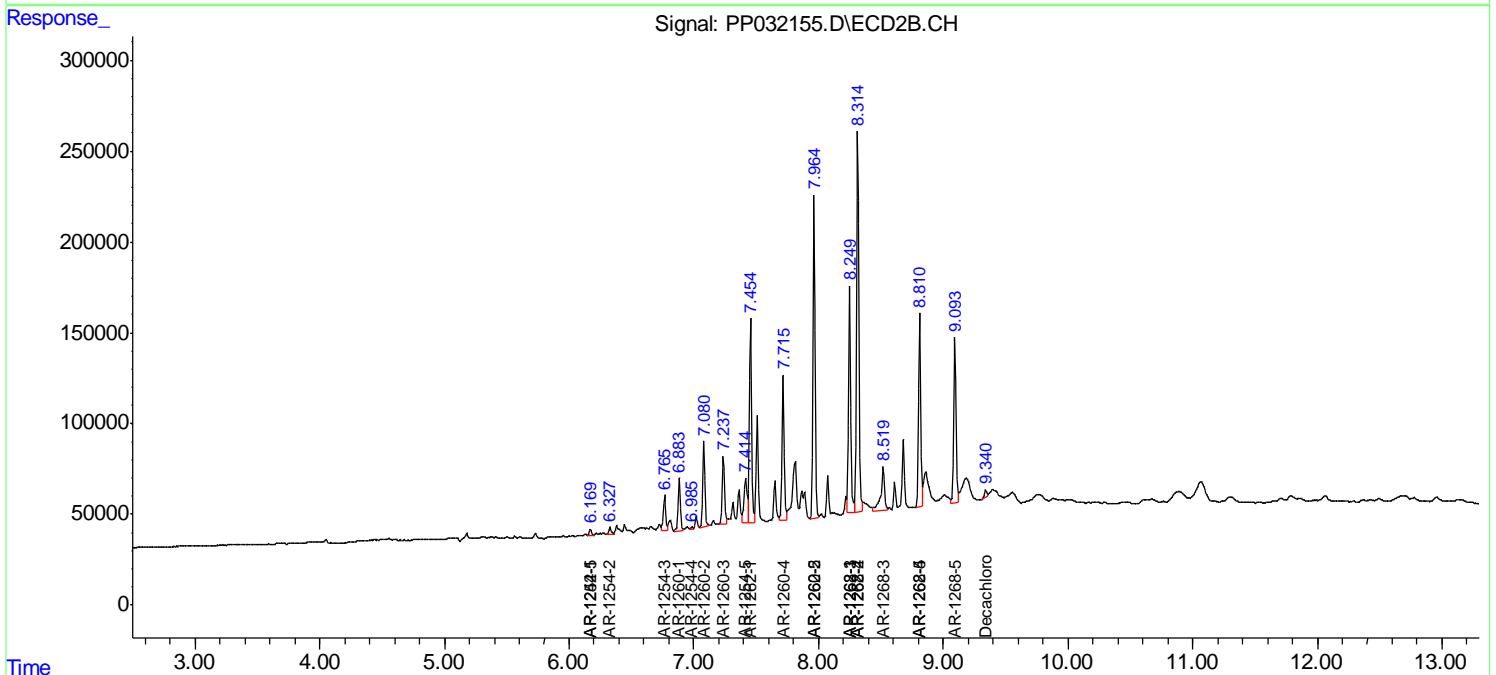
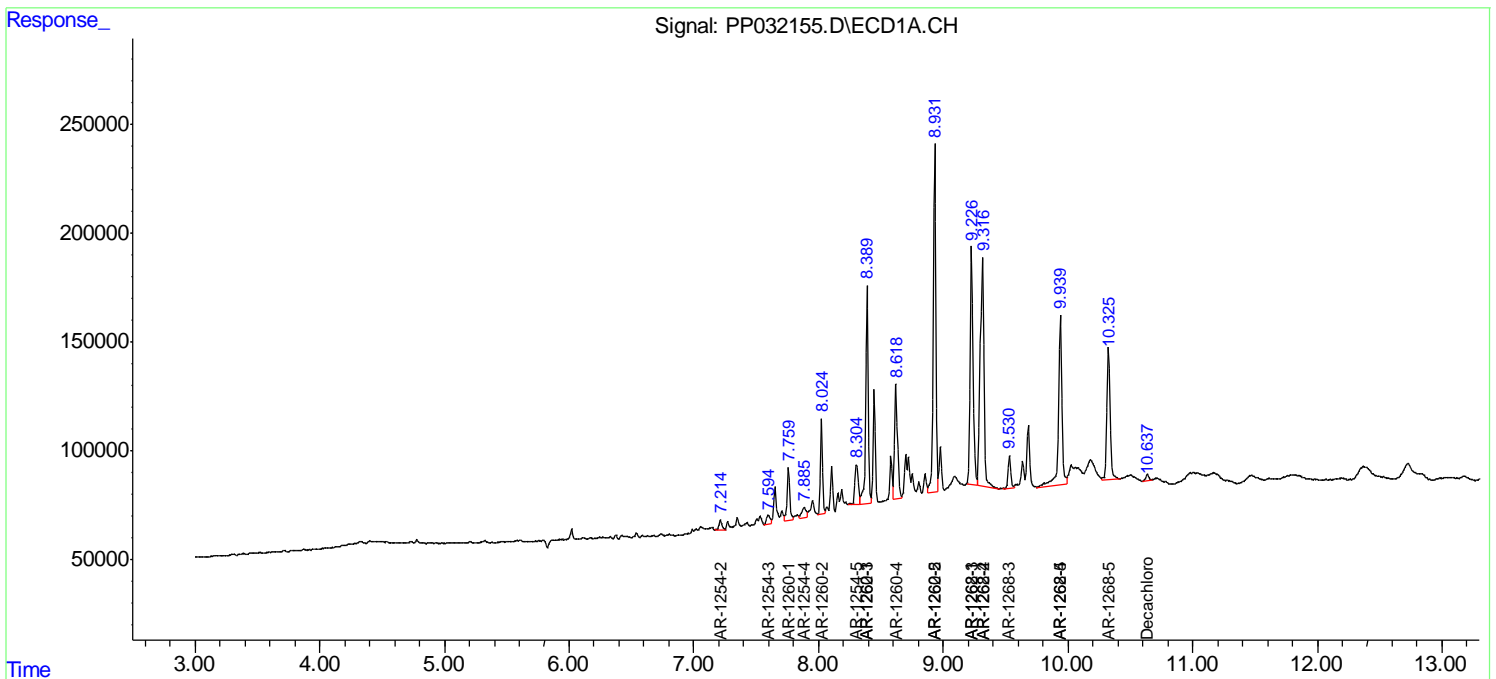
(f)=RT Delta > 1/2 Window (#)=Amounts differ by > 25% (m)=manual int.

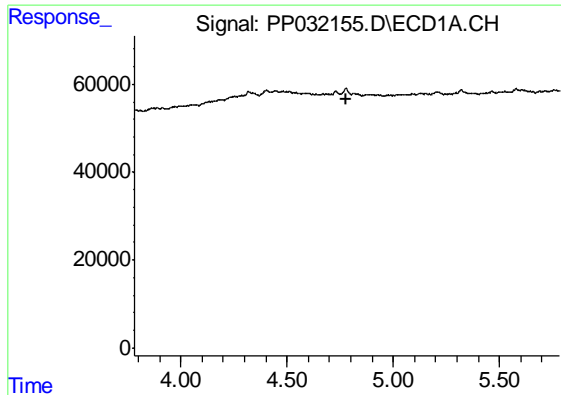
Data Path : Z:\pestpcbsrv\HPCHEM1\ECD_P\Data\PP121520\
 Data File : PP032155.D
 Signal(s) : Signal #1: ECD1A.CH Signal #2: ECD2B.CH
 Acq On : 15 Dec 2020 15:59
 Operator : DD\AJ
 Sample : L5081-18DL 50X
 Misc :
 ALS Vial : 24 Sample Multiplier: 1

Instrument :
 ECD_P
 ClientSampleId :
 WOOSPK-033-0204DL

Integration File signal 1: autoint1.e
 Integration File signal 2: autoint2.e
 Quant Time: Dec 16 04:42:07 2020
 Quant Method : Z:\pestpcbsrv\HPCHEM1\ECD_P\methods\PP121120.M
 Quant Title : GC EXTRACTABLES
 QLast Update : Sat Dec 12 05:15:55 2020
 Response via : Initial Calibration
 Integrator: ChemStation 6890 Scale Mode: Small noise peaks clipped

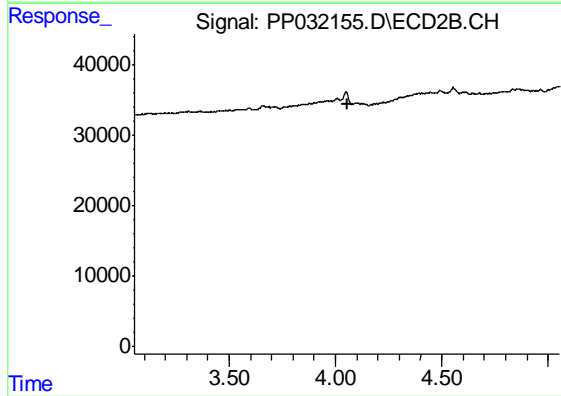
Volume Inj. : 2 µl
 Signal #1 Phase : ZB-MR1 Signal #2 Phase: ZB-MR2
 Signal #1 Info : 30Mx0.32mmx 0.50µ Signal #2 Info : 30M x 0.32mm x 0.25µm



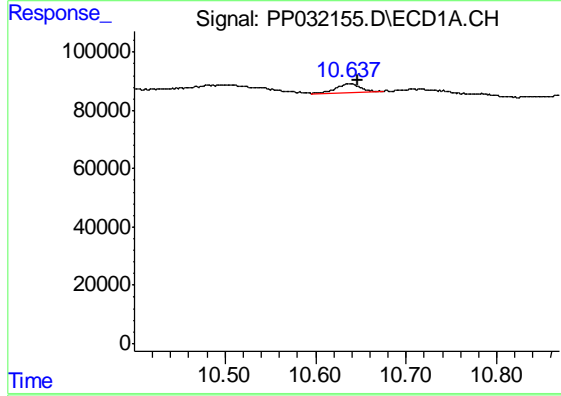


#1 Tetrachloro-m-xylene
 R.T.: 0.000 min
 Exp R.T. : 4.782 min
 Response: 0
 Conc: N.D.

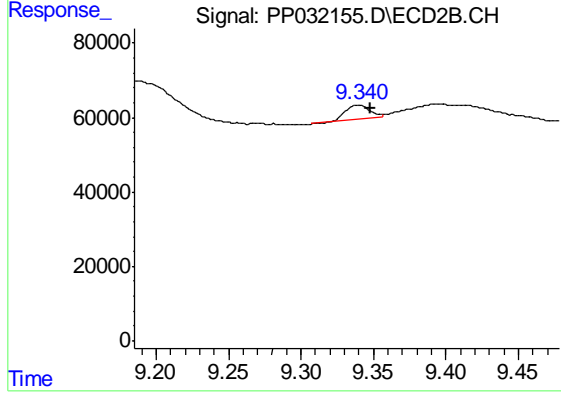
Instrument :
 ECD_P
 ClientSampleId :
 WOOSPK-033-0204DL



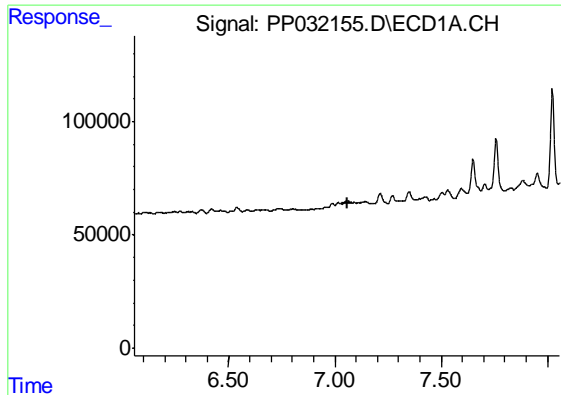
#1 Tetrachloro-m-xylene
 R.T.: 0.000 min
 Exp R.T. : 4.054 min
 Response: 0
 Conc: N.D.



#2 Decachlorobiphenyl
 R.T.: 10.638 min
 Delta R.T.: -0.009 min
 Response: 56864
 Conc: 1.81 ng/ml



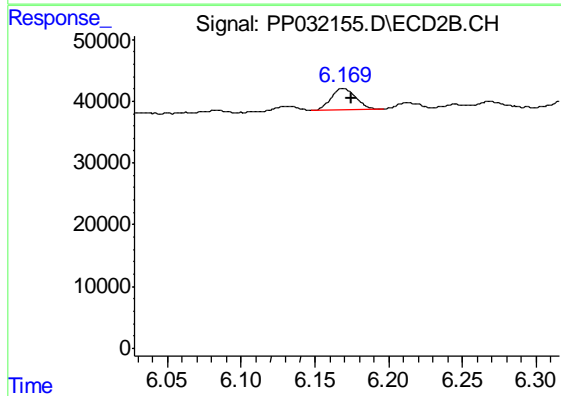
#2 Decachlorobiphenyl
 R.T.: 9.340 min
 Delta R.T.: -0.008 min
 Response: 41577
 Conc: 1.24 ng/ml



#20 AR-1242-5

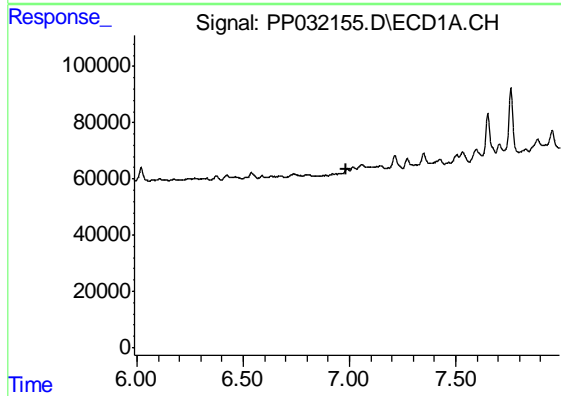
R.T.: 0.000 min
 Exp R.T. : 7.057 min
 Response: 0
 Conc: N.D.

Instrument :
 ECD_P
 ClientSampleId :
 WOOSPK-033-0204DL



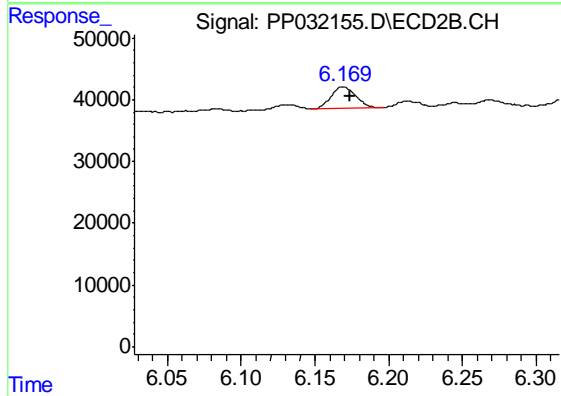
#20 AR-1242-5

R.T.: 6.169 min
 Delta R.T.: -0.006 min
 Response: 42711
 Conc: 48.03 ng/ml



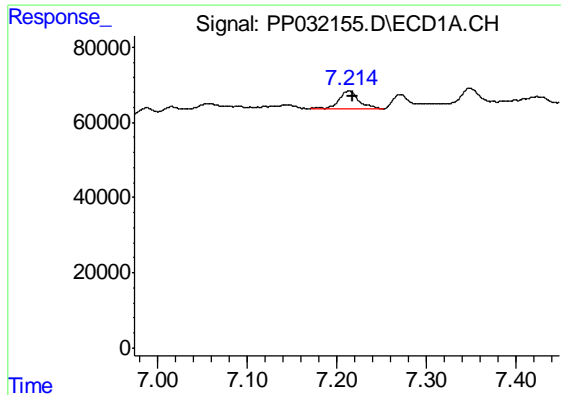
#26 AR-1254-1

R.T.: 0.000 min
 Exp R.T. : 6.988 min
 Response: 0
 Conc: N.D.



#26 AR-1254-1

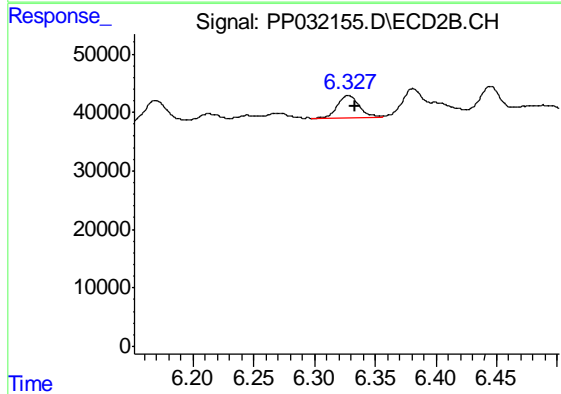
R.T.: 6.169 min
 Delta R.T.: -0.005 min
 Response: 42711
 Conc: 20.66 ng/ml



#27 AR-1254-2

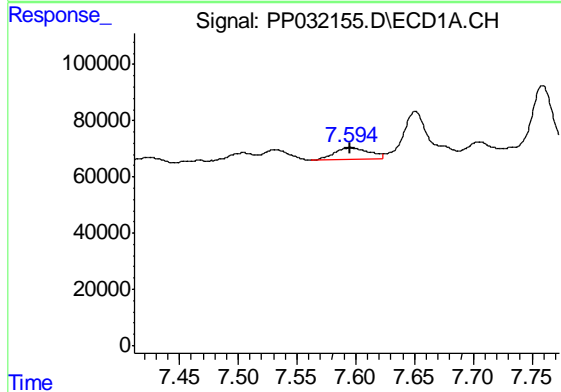
R.T.: 7.214 min
 Delta R.T.: -0.003 min
 Response: 71427
 Conc: 31.05 ng/ml

Instrument :
 ECD_P
 ClientSampleId :
 WOOSPK-033-0204DL



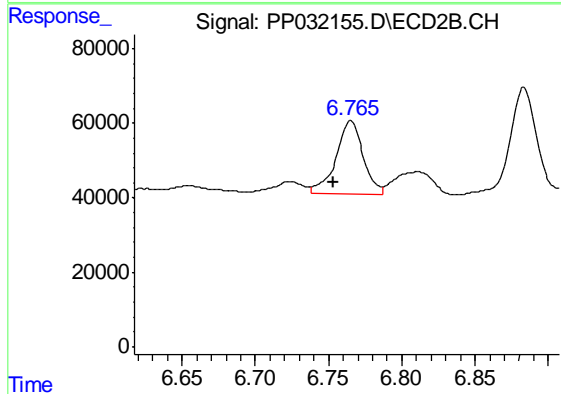
#27 AR-1254-2

R.T.: 6.328 min
 Delta R.T.: -0.005 min
 Response: 45907
 Conc: 25.61 ng/ml



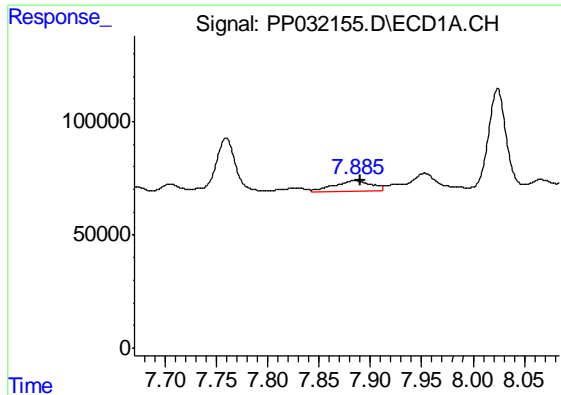
#28 AR-1254-3

R.T.: 7.595 min
 Delta R.T.: 0.000 min
 Response: 87591
 Conc: 35.97 ng/ml



#28 AR-1254-3

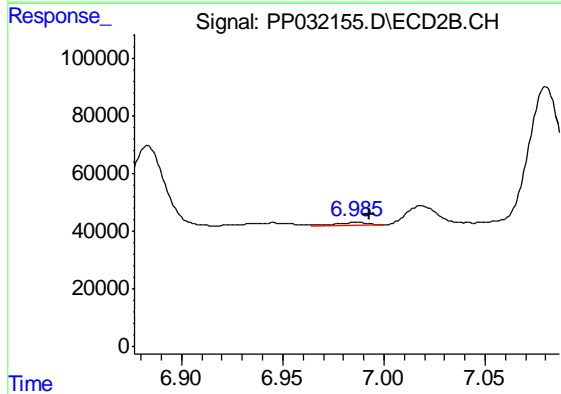
R.T.: 6.765 min
 Delta R.T.: 0.012 min
 Response: 251620
 Conc: 88.04 ng/ml



#29 AR-1254-4

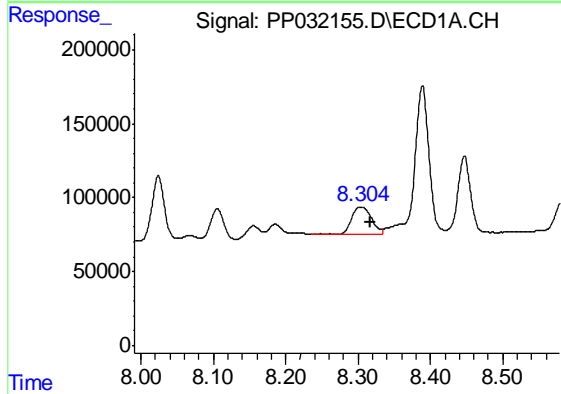
R.T.: 7.885 min
 Delta R.T.: -0.005 min
 Response: 122228
 Conc: 79.41 ng/ml

Instrument :
 ECD_P
 ClientSampleId :
 WOOSPK-033-0204DL



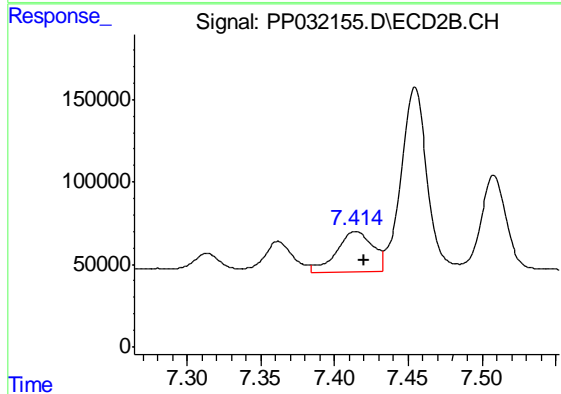
#29 AR-1254-4

R.T.: 6.986 min
 Delta R.T.: -0.007 min
 Response: 11494
 Conc: 8.32 ng/ml



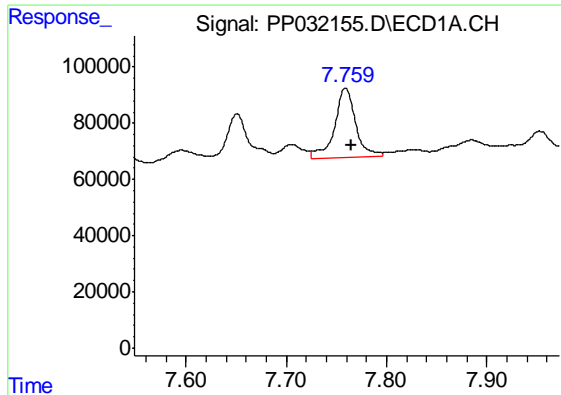
#30 AR-1254-5

R.T.: 8.305 min
 Delta R.T.: -0.013 min
 Response: 349417
 Conc: 203.88 ng/ml



#30 AR-1254-5

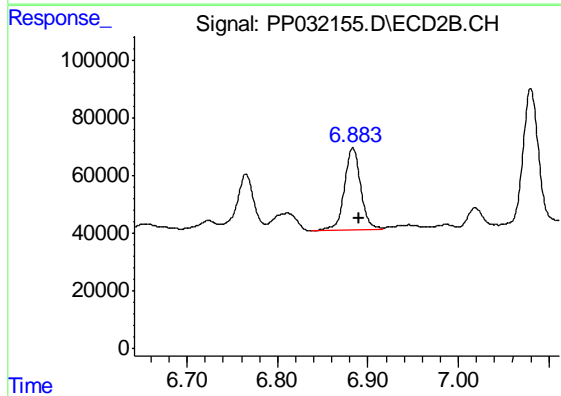
R.T.: 7.414 min
 Delta R.T.: -0.006 min
 Response: 419606
 Conc: 176.38 ng/ml



#31 AR-1260-1

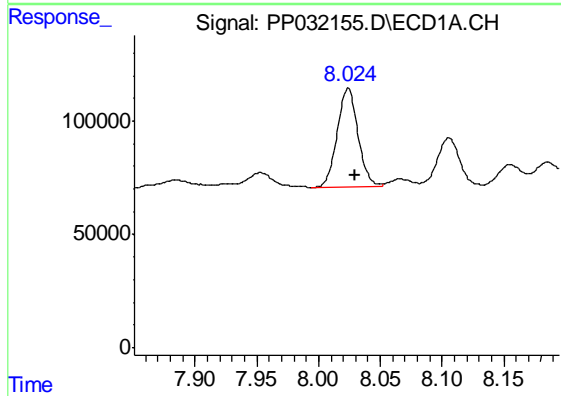
R.T.: 7.759 min
 Delta R.T.: -0.005 min
 Response: 358940
 Conc: 207.11 ng/ml

Instrument :
 ECD_P
 ClientSampleId :
 WOOSPK-033-0204DL



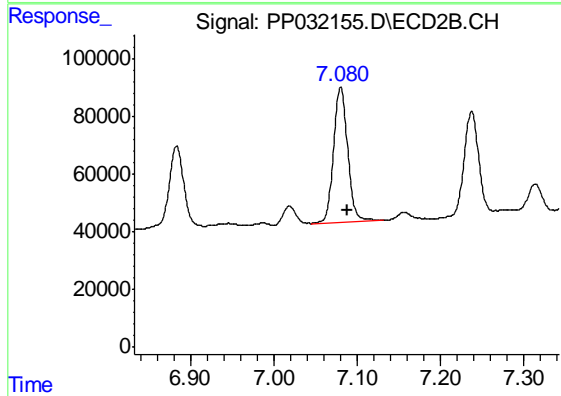
#31 AR-1260-1

R.T.: 6.883 min
 Delta R.T.: -0.007 min
 Response: 360471
 Conc: 190.14 ng/ml



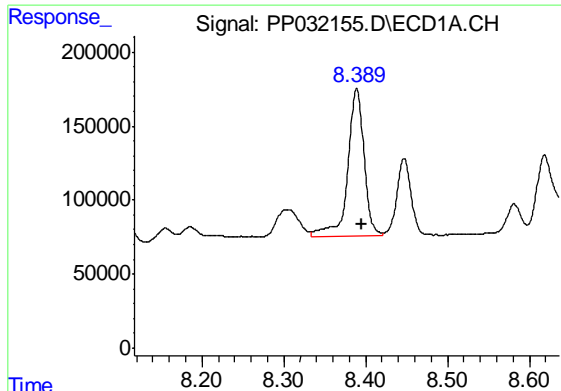
#32 AR-1260-2

R.T.: 8.024 min
 Delta R.T.: -0.005 min
 Response: 520046
 Conc: 253.11 ng/ml



#32 AR-1260-2

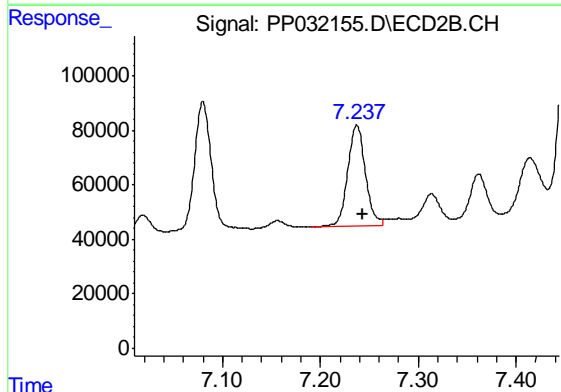
R.T.: 7.080 min
 Delta R.T.: -0.008 min
 Response: 560696
 Conc: 257.75 ng/ml



#33 AR-1260-3

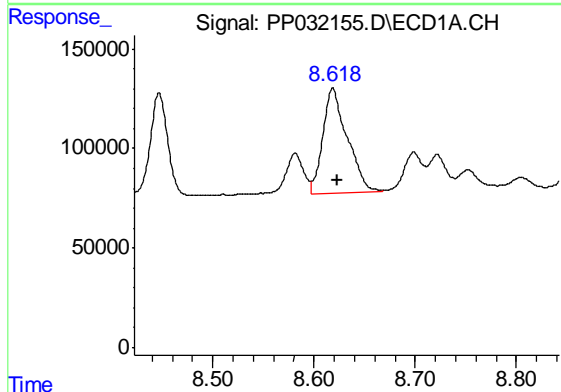
R.T.: 8.389 min
 Delta R.T.: -0.005 min
 Response: 1383482
 Conc: 792.85 ng/ml

Instrument :
 ECD_P
 ClientSampleId :
 WOOSPK-033-0204DL



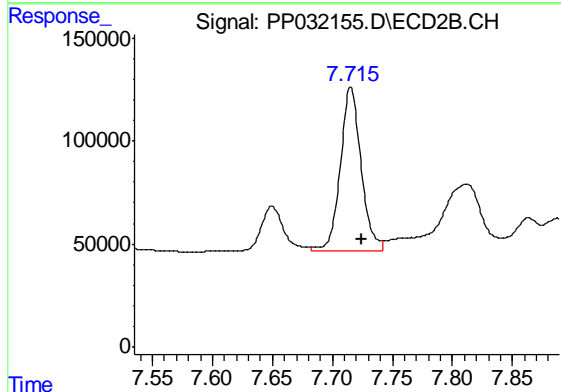
#33 AR-1260-3

R.T.: 7.237 min
 Delta R.T.: -0.006 min
 Response: 471433
 Conc: 221.89 ng/ml



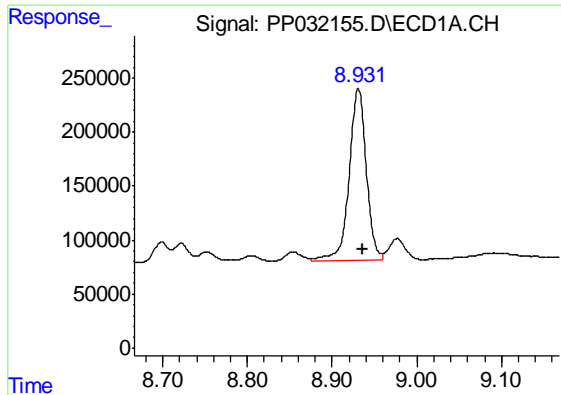
#34 AR-1260-4

R.T.: 8.619 min
 Delta R.T.: -0.004 min
 Response: 887026
 Conc: 492.24 ng/ml



#34 AR-1260-4

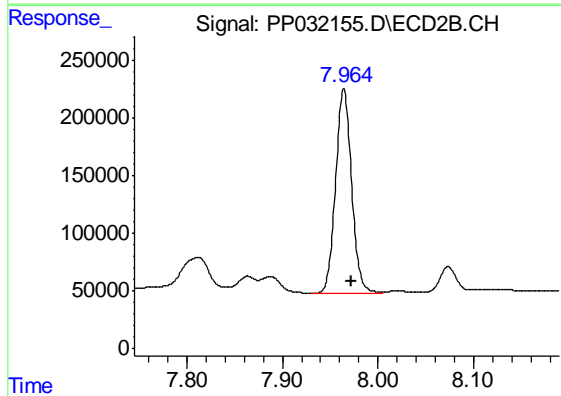
R.T.: 7.715 min
 Delta R.T.: -0.009 min
 Response: 956482
 Conc: 538.38 ng/ml



#35 AR-1260-5

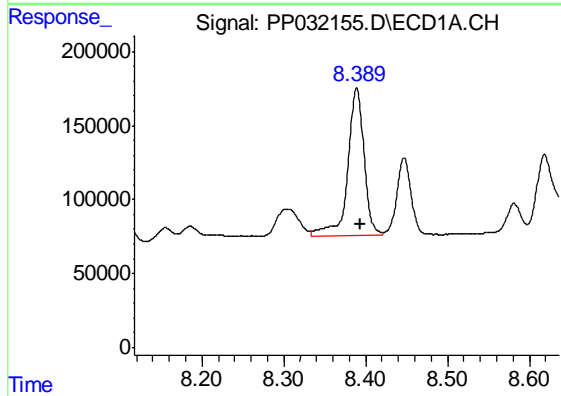
R.T.: 8.931 min
 Delta R.T.: -0.005 min
 Response: 2252506
 Conc: 626.58 ng/ml

Instrument :
 ECD_P
 ClientSampleId :
 WOOSPK-033-0204DL



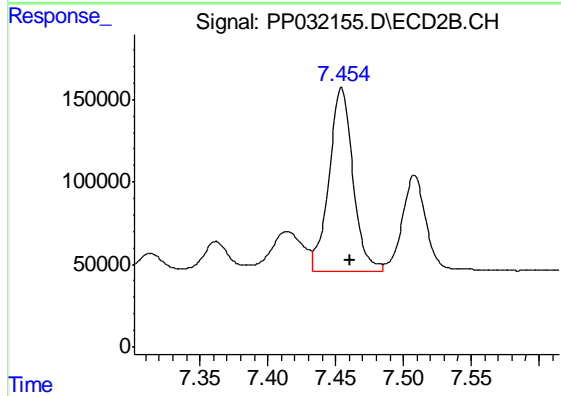
#35 AR-1260-5

R.T.: 7.964 min
 Delta R.T.: -0.008 min
 Response: 2060621
 Conc: 538.66 ng/ml



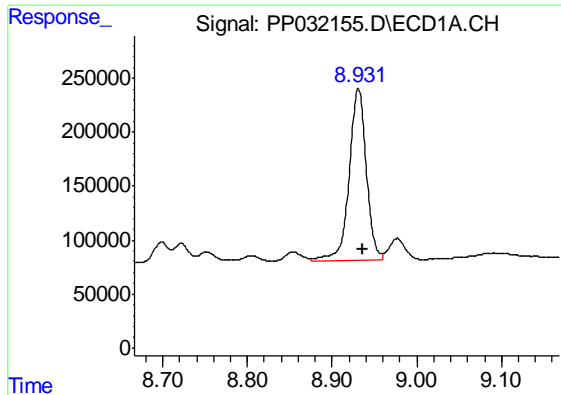
#36 AR-1262-1

R.T.: 8.389 min
 Delta R.T.: -0.005 min
 Response: 1383482
 Conc: 512.72 ng/ml



#36 AR-1262-1

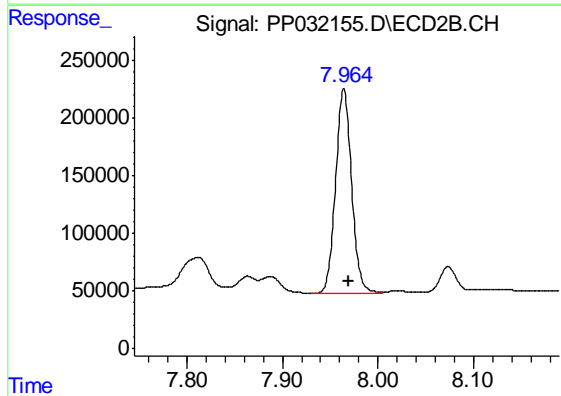
R.T.: 7.454 min
 Delta R.T.: -0.006 min
 Response: 1376565
 Conc: 512.22 ng/ml



#37 AR-1262-2

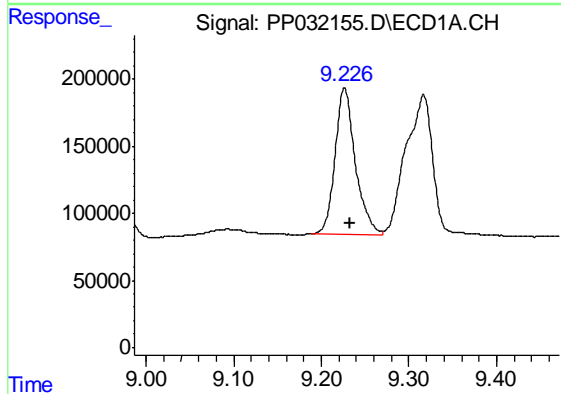
R.T.: 8.931 min
 Delta R.T.: -0.005 min
 Response: 2252506
 Conc: 555.46 ng/ml

Instrument :
 ECD_P
 ClientSampleId :
 WOOSPK-033-0204DL



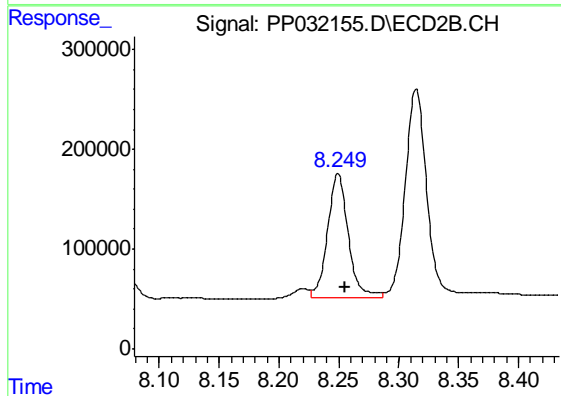
#37 AR-1262-2

R.T.: 7.964 min
 Delta R.T.: -0.006 min
 Response: 2060621
 Conc: 494.19 ng/ml



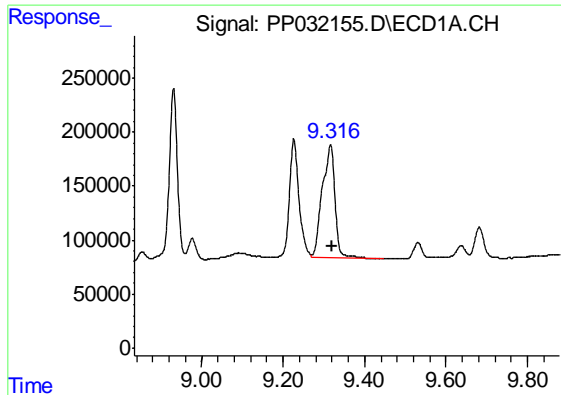
#38 AR-1262-3

R.T.: 9.226 min
 Delta R.T.: -0.007 min
 Response: 1757348
 Conc: 613.28 ng/ml



#38 AR-1262-3

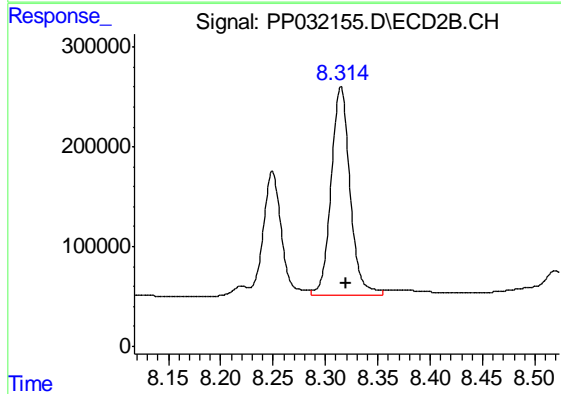
R.T.: 8.249 min
 Delta R.T.: -0.006 min
 Response: 1499124
 Conc: 827.46 ng/ml



#39 AR-1262-4

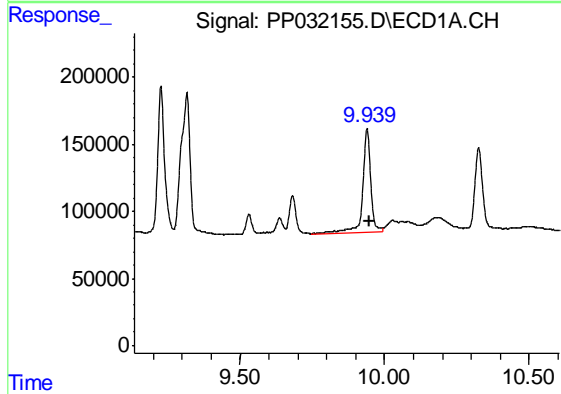
R.T.: 9.317 min
 Delta R.T.: -0.005 min
 Response: 2279817
 Conc: 935.20 ng/ml

Instrument :
 ECD_P
 ClientSampleId :
 WOOSPK-033-0204DL



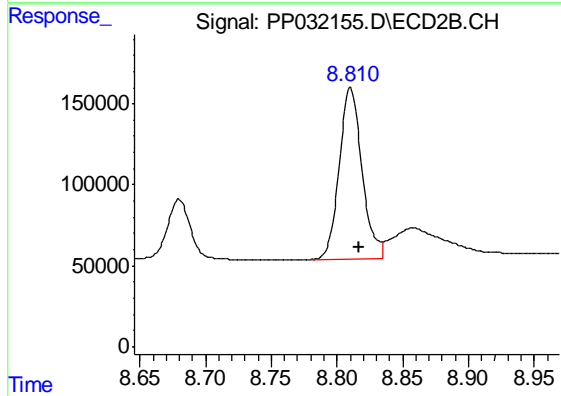
#39 AR-1262-4

R.T.: 8.315 min
 Delta R.T.: -0.005 min
 Response: 2622884
 Conc: 779.61 ng/ml



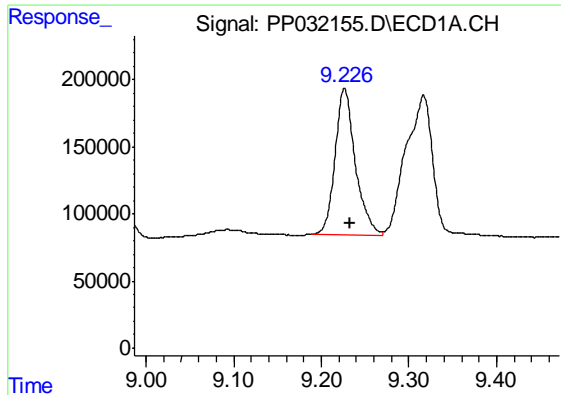
#40 AR-1262-5

R.T.: 9.939 min
 Delta R.T.: -0.007 min
 Response: 1526646
 Conc: 1126.18 ng/ml



#40 AR-1262-5

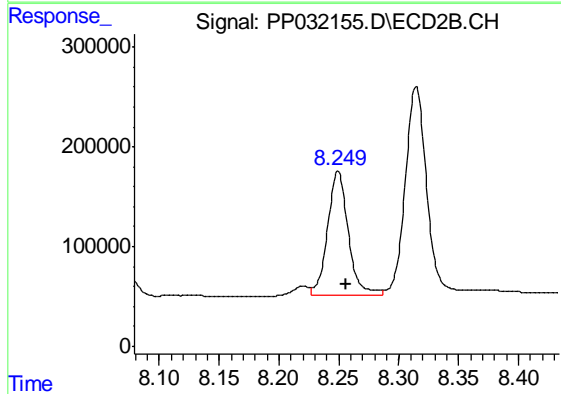
R.T.: 8.810 min
 Delta R.T.: -0.006 min
 Response: 1270406
 Conc: 969.69 ng/ml



#41 AR-1268-1

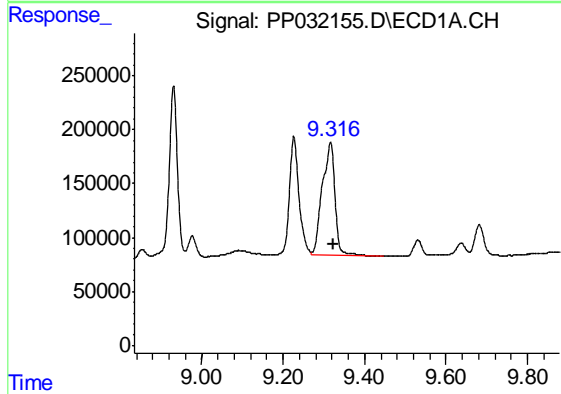
R.T.: 9.226 min
 Delta R.T.: -0.006 min
 Response: 1757348
 Conc: 338.20 ng/ml

Instrument :
 ECD_P
 ClientSampleId :
 WOOSPK-033-0204DL



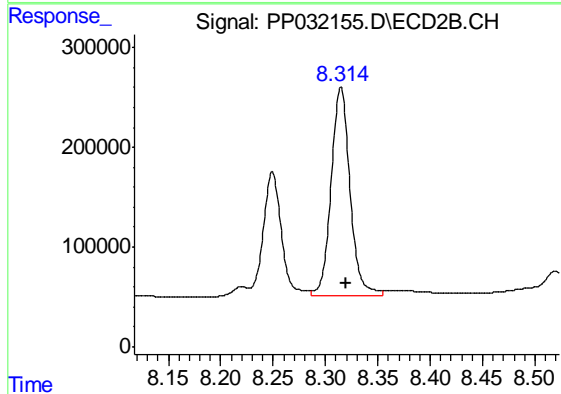
#41 AR-1268-1

R.T.: 8.249 min
 Delta R.T.: -0.006 min
 Response: 1499124
 Conc: 297.47 ng/ml



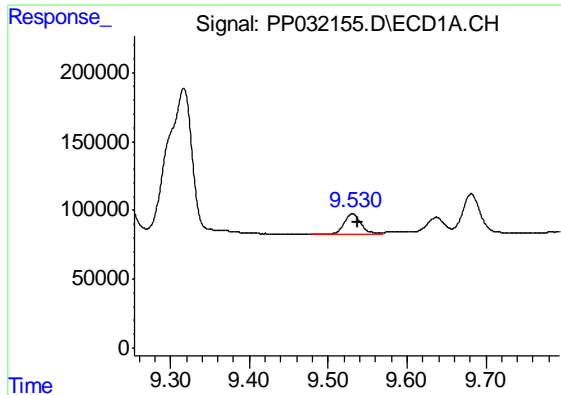
#42 AR-1268-2

R.T.: 9.317 min
 Delta R.T.: -0.006 min
 Response: 2279817
 Conc: 468.37 ng/ml



#42 AR-1268-2

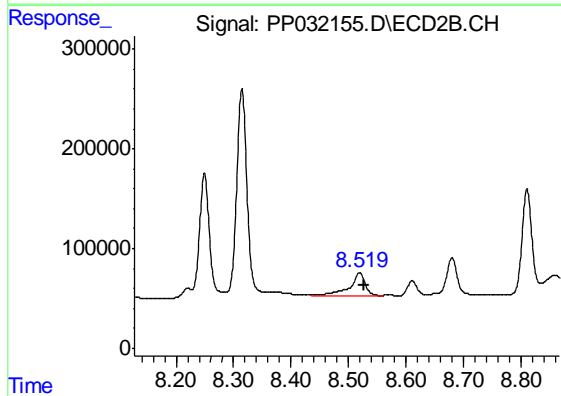
R.T.: 8.315 min
 Delta R.T.: -0.006 min
 Response: 2622884
 Conc: 513.00 ng/ml



#43 AR-1268-3

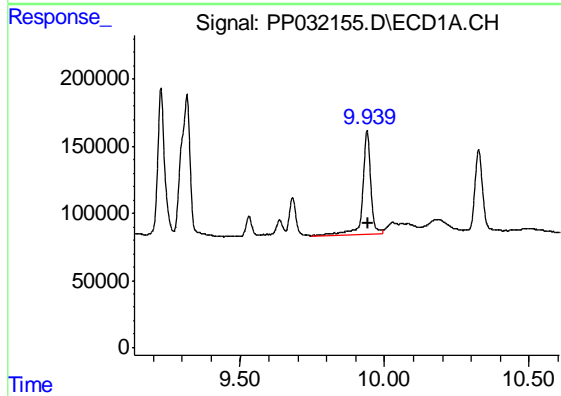
R.T.: 9.531 min
 Delta R.T.: -0.006 min
 Response: 220580
 Conc: 51.04 ng/ml

Instrument :
 ECD_P
 ClientSampleId :
 WOOSPK-033-0204DL



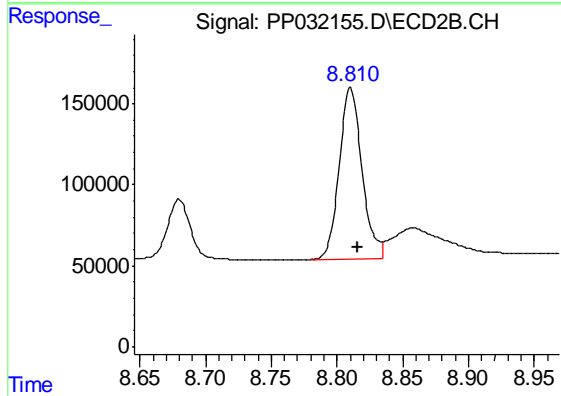
#43 AR-1268-3

R.T.: 8.519 min
 Delta R.T.: -0.008 min
 Response: 476931
 Conc: 108.17 ng/ml



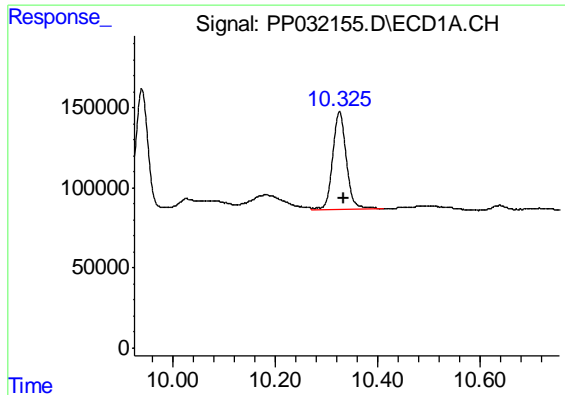
#44 AR-1268-4

R.T.: 9.939 min
 Delta R.T.: -0.005 min
 Response: 1526646
 Conc: 1098.87 ng/ml



#44 AR-1268-4

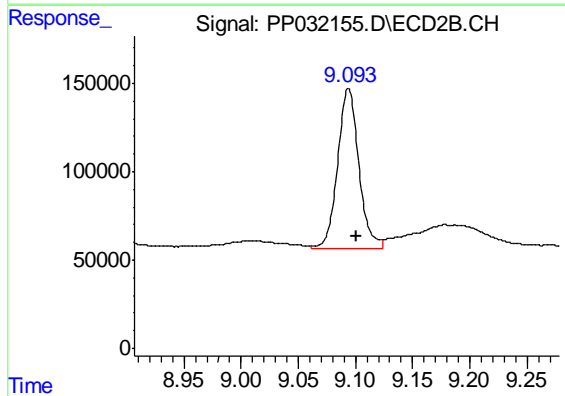
R.T.: 8.810 min
 Delta R.T.: -0.006 min
 Response: 1270406
 Conc: 869.30 ng/ml



#45 AR-1268-5

R.T.: 10.325 min
Delta R.T.: -0.007 min
Response: 1131537
Conc: 93.94 ng/ml

Instrument :
ECD_P
ClientSampleId :
WOOSPK-033-0204DL



#45 AR-1268-5

R.T.: 9.094 min
Delta R.T.: -0.007 min
Response: 1175697
Conc: 92.97 ng/ml