

Data Path : Z:\pestpcbsrv\HPCHEM1\ECD\_P\Data\PP121522\  
 Data File : PP053773.D  
 Signal(s) : Signal #1: ECD1A.ch Signal #2: ECD2B.ch  
 Acq On : 15 Dec 2022 09:37  
 Operator : YP\AJ  
 Sample : AR1242CCC500  
 Misc :  
 ALS Vial : 4 Sample Multiplier: 1

Instrument :  
 ECD\_P  
 ClientSampleId :  
 AR1242CCC500

Integration File signal 1: autoint1.e  
 Integration File signal 2: autoint2.e  
 Quant Time: Dec 15 20:57:48 2022  
 Quant Method : Z:\pestpcbsrv\HPCHEM1\ECD\_P\methods\PP121322.M  
 Quant Title : GC EXTRACTABLES  
 QLast Update : Wed Dec 14 05:38:40 2022  
 Response via : Initial Calibration  
 Integrator: ChemStation

Volume Inj. : 2 µl  
 Signal #1 Phase : ZB-MR1 Signal #2 Phase: ZB-MR2  
 Signal #1 Info : 30Mx0.32mmx 0.50µ Signal #2 Info : 30M x 0.32mm x 0.25µm

Compound	RT#1	RT#2	Resp#1	Resp#2	ng/ml	ng/ml
-----						
System Monitoring Compounds						
1) SA Tetrachlo...	4.339	3.592	116.7E6	88357820	55.575	56.577
2) SA Decachlor...	10.102	8.631	88712375	74570844	52.252	53.389
Target Compounds						
16) L4 AR-1242-1	5.511	4.684	29711776	20359186	567.226	574.899
17) L4 AR-1242-2	5.535	4.703	42314689	27737033	555.373	577.347
18) L4 AR-1242-3	5.597	4.880	27123148	15227798	553.591	584.093
19) L4 AR-1242-4	5.695	4.964	21796367	16064564	567.779	563.103
20) L4 AR-1242-5	6.435	5.489	24397410	18851887	598.179	617.624
-----						

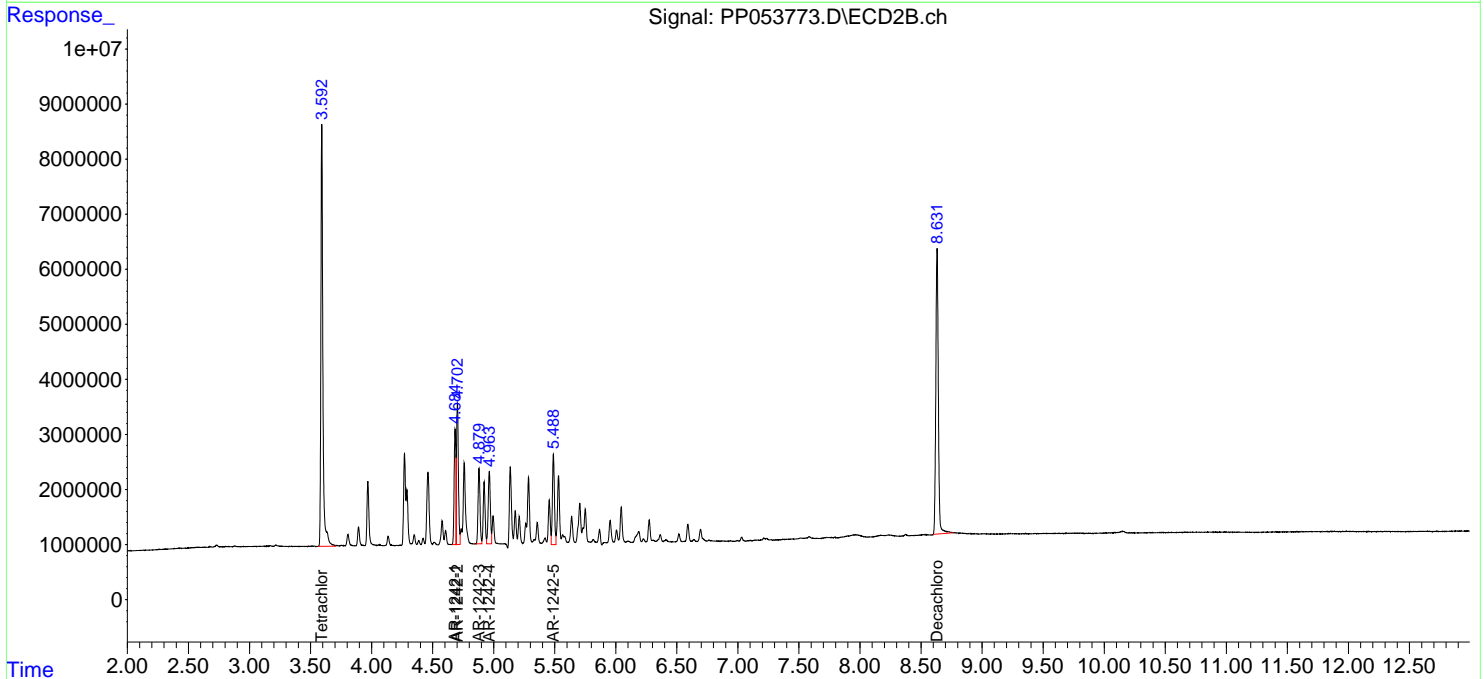
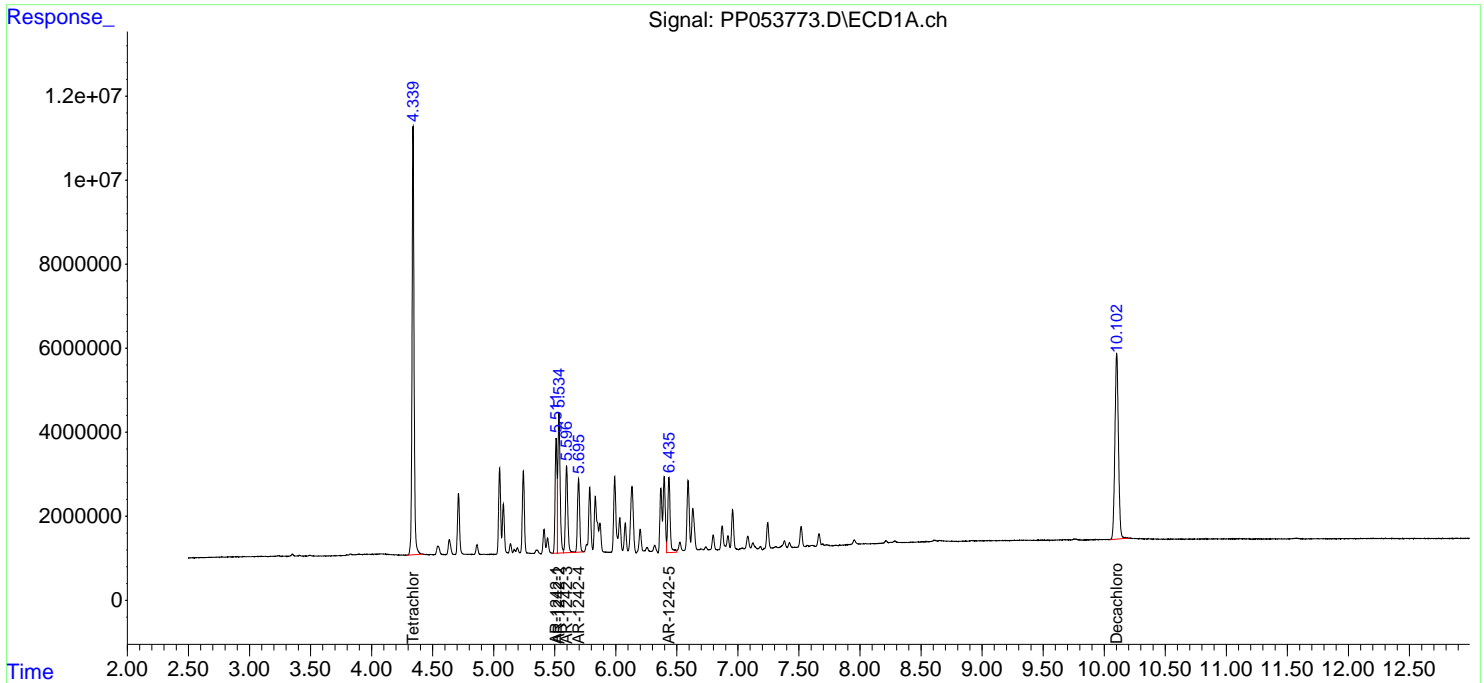
(f)=RT Delta > 1/2 Window (#)=Amounts differ by > 25% (m)=manual int.

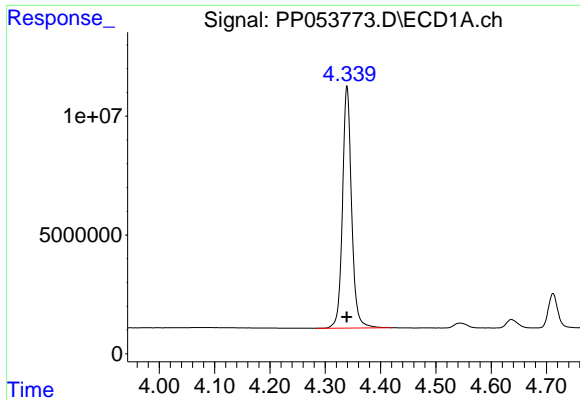
Data Path : Z:\pestpcbsrv\HPCHEM1\ECD\_P\Data\PP121522\  
 Data File : PP053773.D  
 Signal(s) : Signal #1: ECD1A.ch Signal #2: ECD2B.ch  
 Acq On : 15 Dec 2022 09:37  
 Operator : YP\AJ  
 Sample : AR1242CCC500  
 Misc :  
 ALS Vial : 4 Sample Multiplier: 1

Instrument :  
 ECD\_P  
 ClientSampleId :  
 AR1242CCC500

Integration File signal 1: autoint1.e  
 Integration File signal 2: autoint2.e  
 Quant Time: Dec 15 20:57:48 2022  
 Quant Method : Z:\pestpcbsrv\HPCHEM1\ECD\_P\methods\PP121322.M  
 Quant Title : GC EXTRACTABLES  
 QLast Update : Wed Dec 14 05:38:40 2022  
 Response via : Initial Calibration  
 Integrator: ChemStation

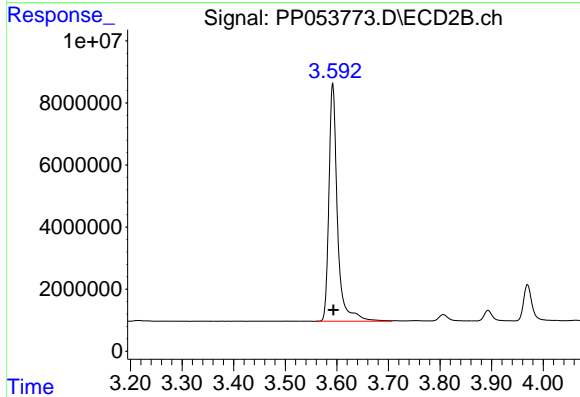
Volume Inj. : 2 µl  
 Signal #1 Phase : ZB-MR1 Signal #2 Phase: ZB-MR2  
 Signal #1 Info : 30Mx0.32mmx 0.50µ Signal #2 Info : 30M x 0.32mm x 0.25µm



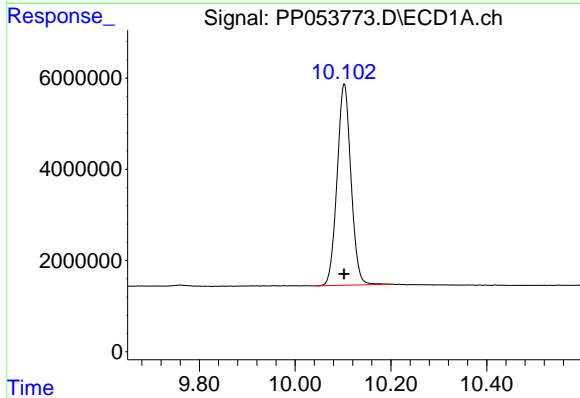


#1 Tetrachloro-m-xylene  
 R.T.: 4.339 min  
 Delta R.T.: 0.000 min  
 Response: 116693796  
 Conc: 55.57 ng/ml

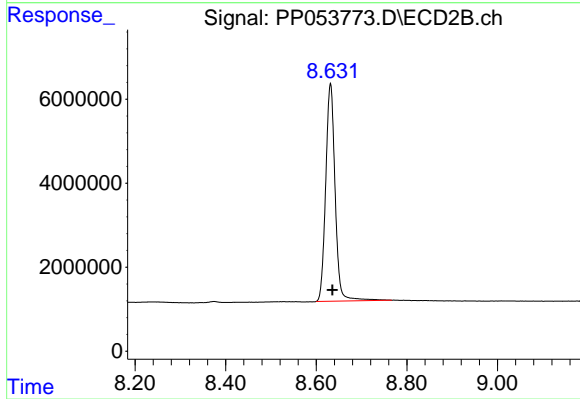
Instrument :  
 ECD\_P  
 ClientSampleId :  
 AR1242CCC500



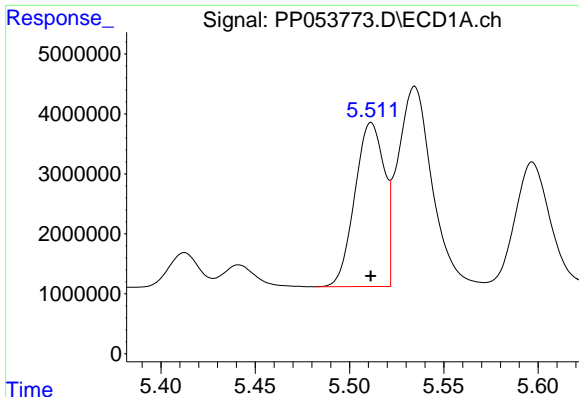
#1 Tetrachloro-m-xylene  
 R.T.: 3.592 min  
 Delta R.T.: -0.002 min  
 Response: 88357820  
 Conc: 56.58 ng/ml



#2 Decachlorobiphenyl  
 R.T.: 10.102 min  
 Delta R.T.: 0.000 min  
 Response: 88712375  
 Conc: 52.25 ng/ml



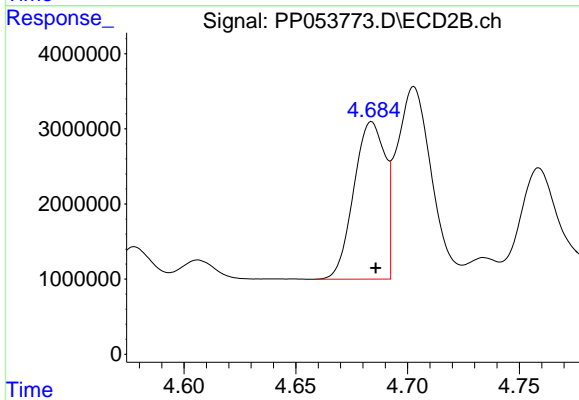
#2 Decachlorobiphenyl  
 R.T.: 8.631 min  
 Delta R.T.: -0.004 min  
 Response: 74570844  
 Conc: 53.39 ng/ml



#16 AR-1242-1

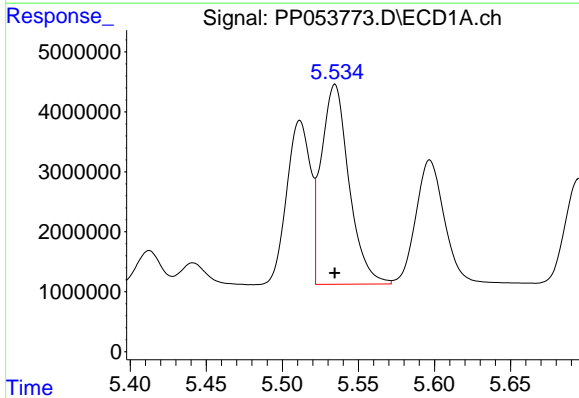
R.T.: 5.511 min  
 Delta R.T.: 0.000 min  
 Response: 29711776  
 Conc: 567.23 ng/ml

Instrument :  
 ECD\_P  
 ClientSampleId :  
 AR1242CCC500



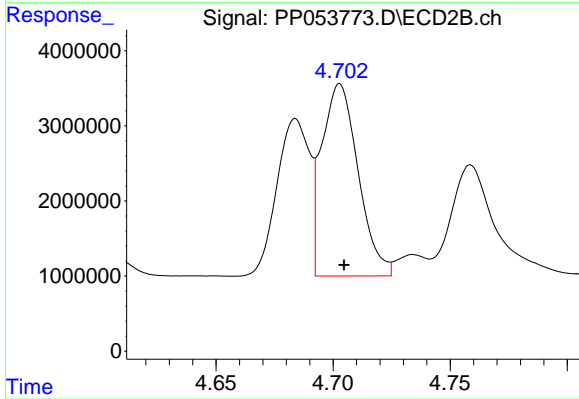
#16 AR-1242-1

R.T.: 4.684 min  
 Delta R.T.: -0.002 min  
 Response: 20359186  
 Conc: 574.90 ng/ml



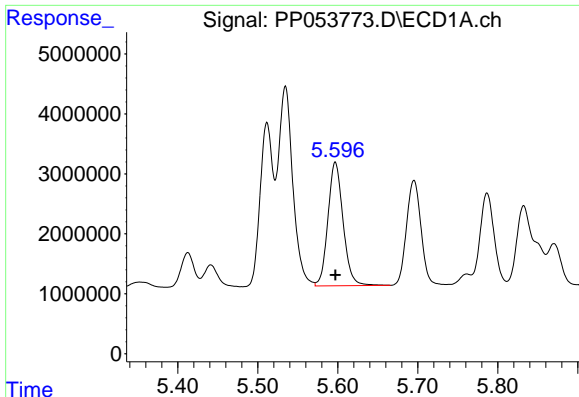
#17 AR-1242-2

R.T.: 5.535 min  
 Delta R.T.: 0.000 min  
 Response: 42314689  
 Conc: 555.37 ng/ml



#17 AR-1242-2

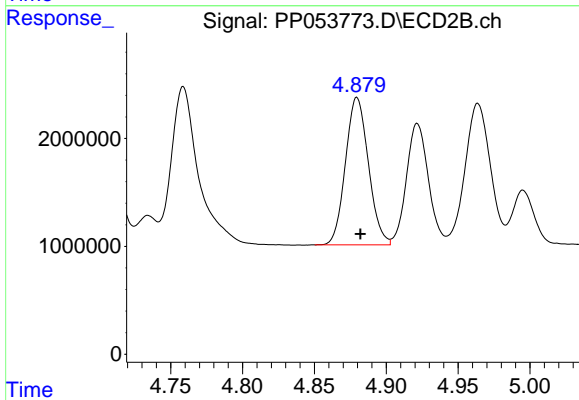
R.T.: 4.703 min  
 Delta R.T.: -0.002 min  
 Response: 27737033  
 Conc: 577.35 ng/ml



#18 AR-1242-3

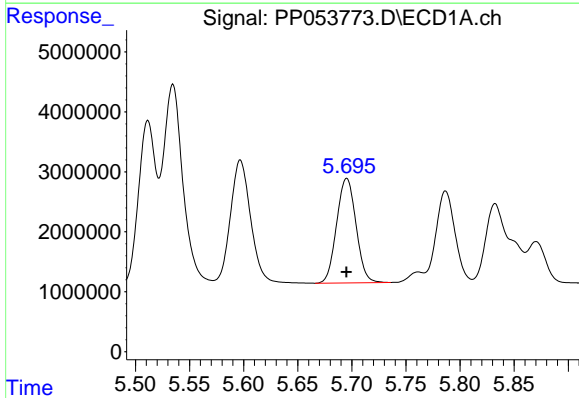
R.T.: 5.597 min  
 Delta R.T.: 0.000 min  
 Response: 27123148  
 Conc: 553.59 ng/ml

Instrument :  
 ECD\_P  
 ClientSampleId :  
 AR1242CCC500



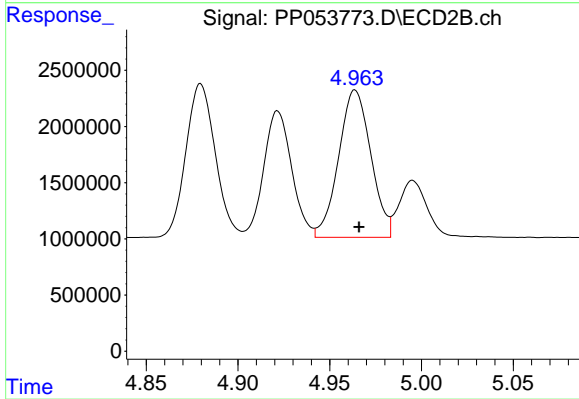
#18 AR-1242-3

R.T.: 4.880 min  
 Delta R.T.: -0.002 min  
 Response: 15227798  
 Conc: 584.09 ng/ml



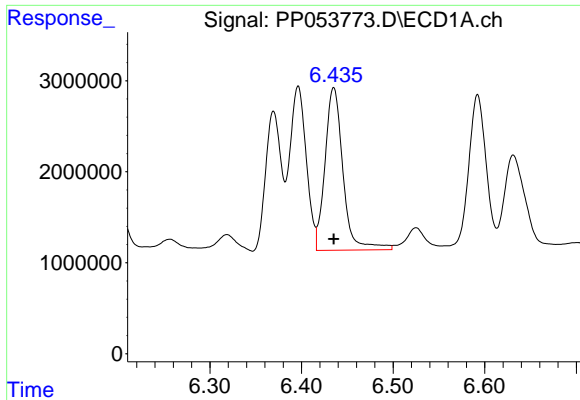
#19 AR-1242-4

R.T.: 5.695 min  
 Delta R.T.: 0.000 min  
 Response: 21796367  
 Conc: 567.78 ng/ml



#19 AR-1242-4

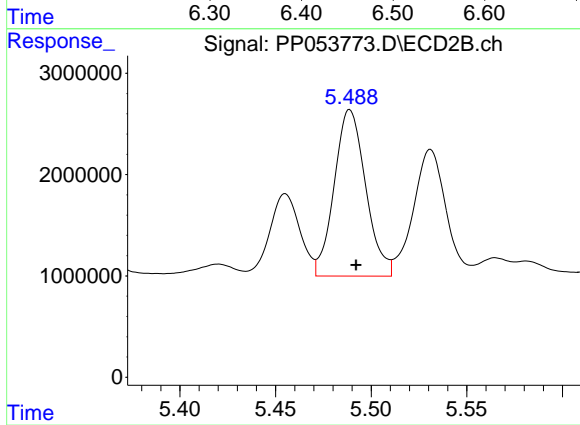
R.T.: 4.964 min  
 Delta R.T.: -0.002 min  
 Response: 16064564  
 Conc: 563.10 ng/ml



#20 AR-1242-5

R.T.: 6.435 min  
Delta R.T.: 0.000 min  
Response: 24397410  
Conc: 598.18 ng/ml

Instrument :  
ECD\_P  
ClientSampleId :  
AR1242CCC500



#20 AR-1242-5

R.T.: 5.489 min  
Delta R.T.: -0.003 min  
Response: 18851887  
Conc: 617.62 ng/ml