

Data Path : Z:\pestpcbsrv\HPCHEM1\ECD\_P\Data\PP121621\  
 Data File : PP041997.D  
 Signal(s) : Signal #1: ECD1A.CH Signal #2: ECD2B.CH  
 Acq On : 15 Dec 2021 21:08  
 Operator : AJ\MA  
 Sample : AR1248ICC250  
 Misc :  
 ALS Vial : 18 Sample Multiplier: 1

Instrument :  
 ECD\_P  
 ClientSampleId :  
 AR1248ICC250

Integration File signal 1: autoint1.e  
 Integration File signal 2: autoint2.e  
 Quant Time: Dec 16 05:24:42 2021  
 Quant Method : Z:\pestpcbsrv\HPCHEM1\ECD\_P\methods\PP121621.M  
 Quant Title : GC EXTRACTABLES  
 QLast Update : Thu Dec 16 05:16:54 2021  
 Response via : Initial Calibration  
 Integrator: ChemStation 6890 Scale Mode: Small noise peaks clipped

Volume Inj. : 2 µl  
 Signal #1 Phase : ZB-MR1 Signal #2 Phase: ZB-MR2  
 Signal #1 Info : 30Mx0.32mmx 0.50µ Signal #2 Info : 30M x 0.32mm x 0.25µm

Compound	RT#1	RT#2	Resp#1	Resp#2	ng/ml	ng/ml
-----						
System Monitoring Compounds						
1) SA Tetrachlo...	4.928	4.069	351008	659568	26.549	25.427
2) SA Decachlor...	10.918	9.428	357215	562671	26.087	26.972
Target Compounds						
21) L5 AR-1248-1	6.235	5.339	57510	142465	262.653	260.785
22) L5 AR-1248-2	6.531	5.605	82400	200184	262.084	266.825
23) L5 AR-1248-3	6.748	5.650	97150	210549	257.731	263.099
24) L5 AR-1248-4	7.173	5.838	104491	254904	255.048	264.932
25) L5 AR-1248-5	7.212	6.262	103952	253458	258.232	266.996
-----						

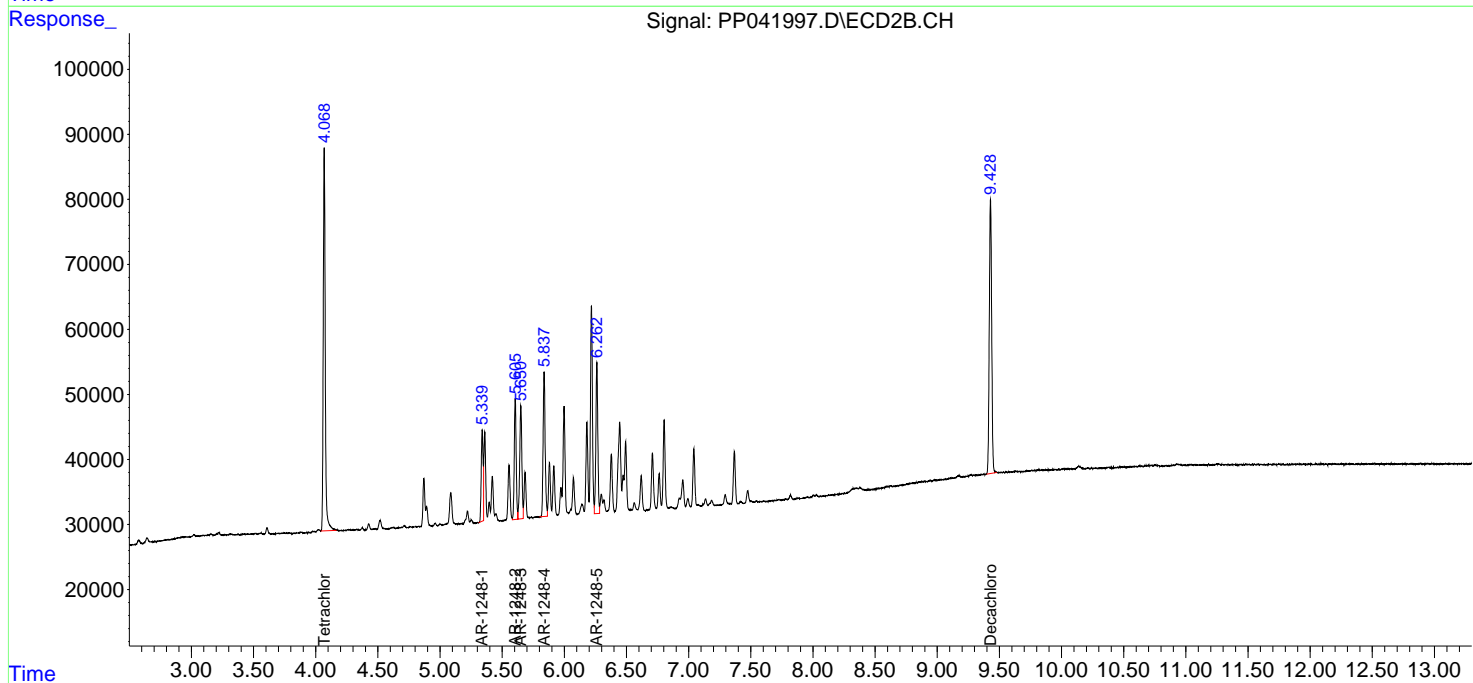
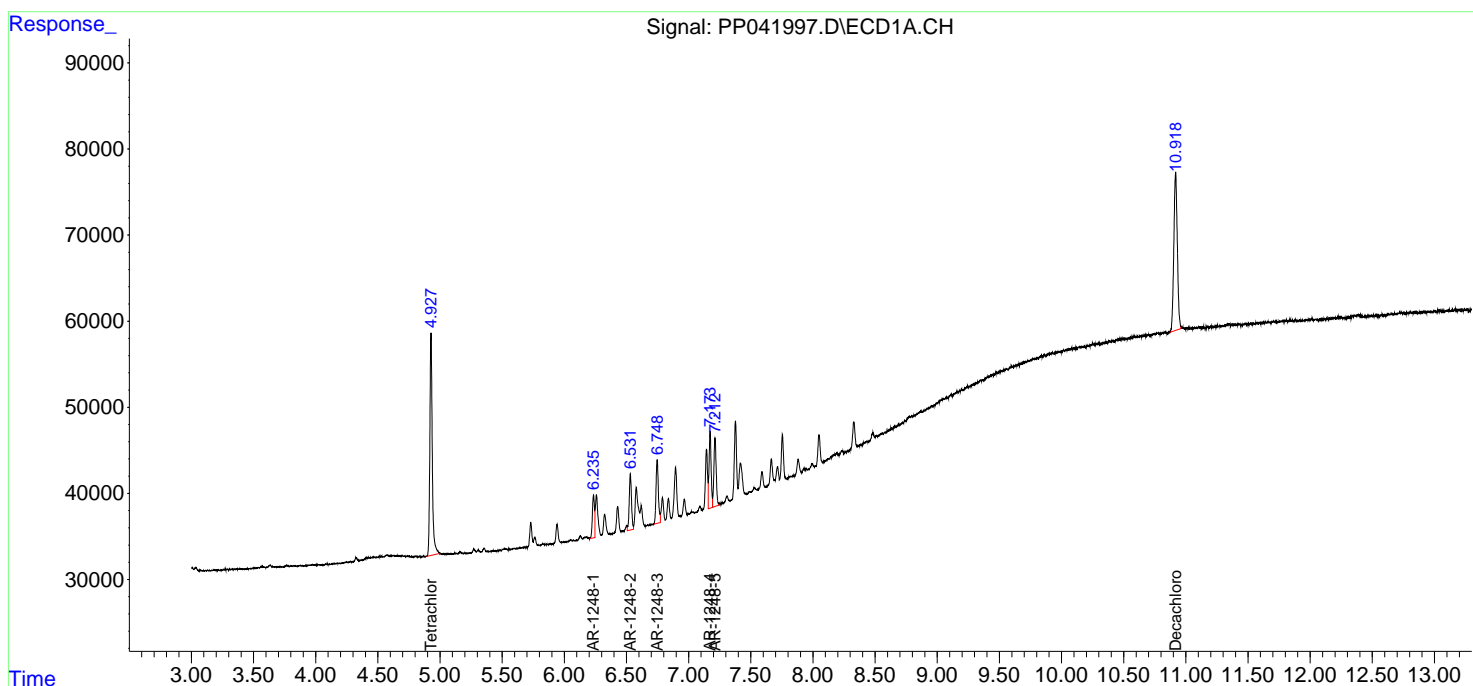
(f)=RT Delta > 1/2 Window (#)=Amounts differ by > 25% (m)=manual int.

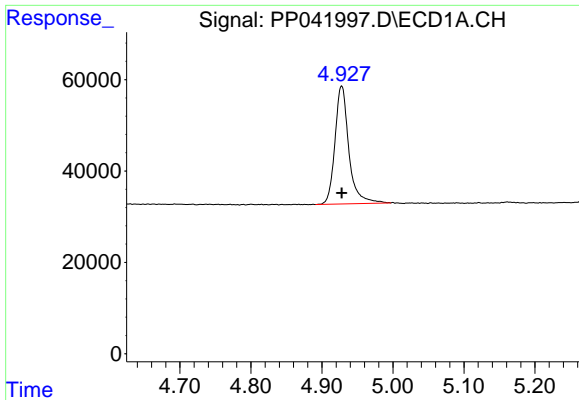
Data Path : Z:\pestpcbsrv\HPCHEM1\ECD\_P\Data\PP121621\  
 Data File : PP041997.D  
 Signal(s) : Signal #1: ECD1A.CH Signal #2: ECD2B.CH  
 Acq On : 15 Dec 2021 21:08  
 Operator : AJ\MA  
 Sample : AR1248ICC250  
 Misc :  
 ALS Vial : 18 Sample Multiplier: 1

Instrument :  
 ECD\_P  
 ClientSampleId :  
 AR1248ICC250

Integration File signal 1: autoint1.e  
 Integration File signal 2: autoint2.e  
 Quant Time: Dec 16 05:24:42 2021  
 Quant Method : Z:\pestpcbsrv\HPCHEM1\ECD\_P\methods\PP121621.M  
 Quant Title : GC EXTRACTABLES  
 QLast Update : Thu Dec 16 05:16:54 2021  
 Response via : Initial Calibration  
 Integrator: ChemStation 6890 Scale Mode: Small noise peaks clipped

Volume Inj. : 2 µl  
 Signal #1 Phase : ZB-MR1 Signal #2 Phase: ZB-MR2  
 Signal #1 Info : 30Mx0.32mmx 0.50µ Signal #2 Info : 30M x 0.32mm x 0.25µm

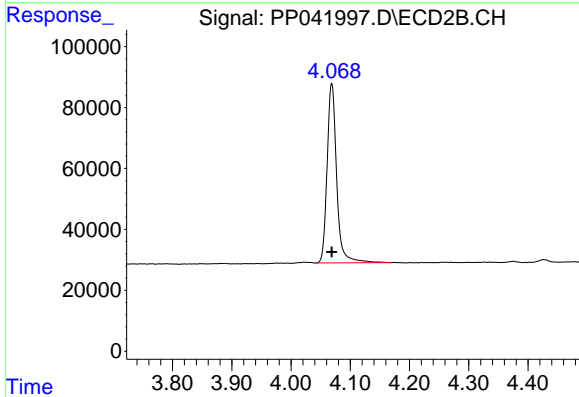




#1 Tetrachloro-m-xylene

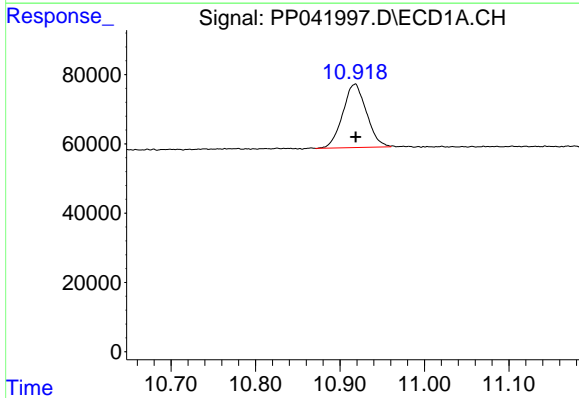
R.T.: 4.928 min  
 Delta R.T.: 0.000 min  
 Response: 351008  
 Conc: 26.55 ng/ml

Instrument :  
 ECD\_P  
 ClientSampleId :  
 AR1248ICC250



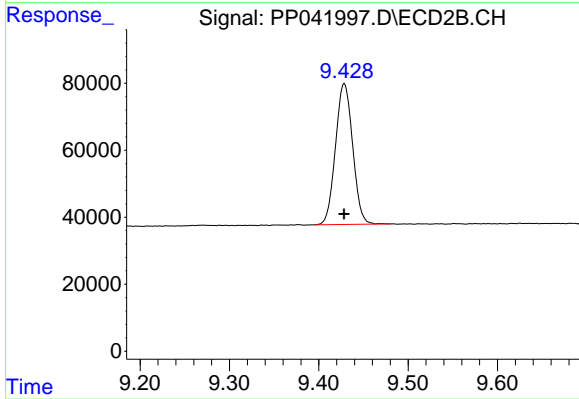
#1 Tetrachloro-m-xylene

R.T.: 4.069 min  
 Delta R.T.: 0.000 min  
 Response: 659568  
 Conc: 25.43 ng/ml



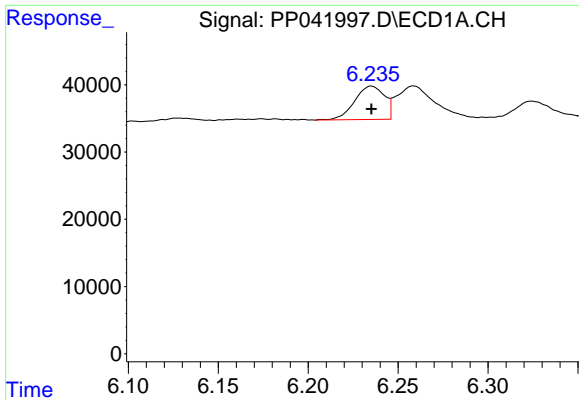
#2 Decachlorobiphenyl

R.T.: 10.918 min  
 Delta R.T.: 0.000 min  
 Response: 357215  
 Conc: 26.09 ng/ml



#2 Decachlorobiphenyl

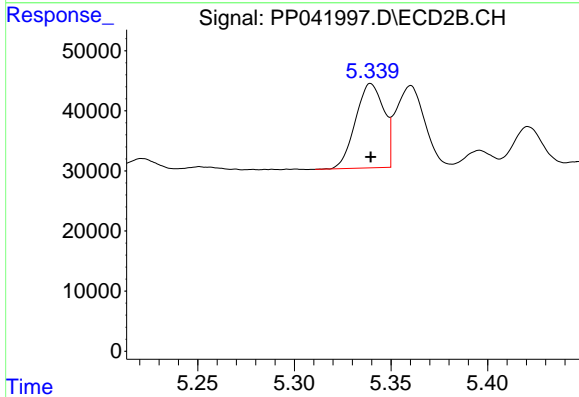
R.T.: 9.428 min  
 Delta R.T.: 0.000 min  
 Response: 562671  
 Conc: 26.97 ng/ml



#21 AR-1248-1

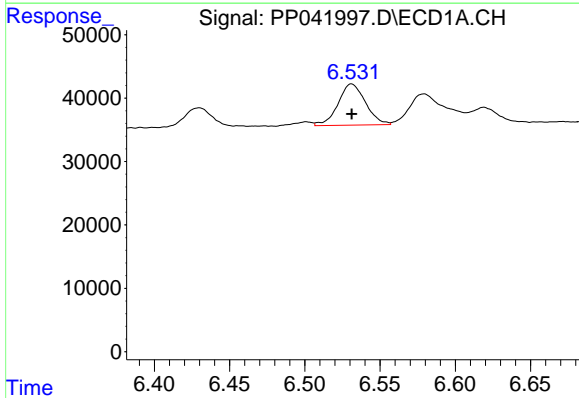
R.T.: 6.235 min  
 Delta R.T.: 0.000 min  
 Response: 57510  
 Conc: 262.65 ng/ml

Instrument :  
 ECD\_P  
 ClientSampleId :  
 AR1248ICC250



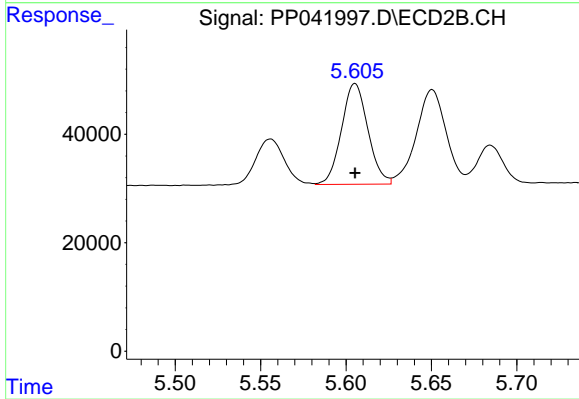
#21 AR-1248-1

R.T.: 5.339 min  
 Delta R.T.: 0.000 min  
 Response: 142465  
 Conc: 260.79 ng/ml



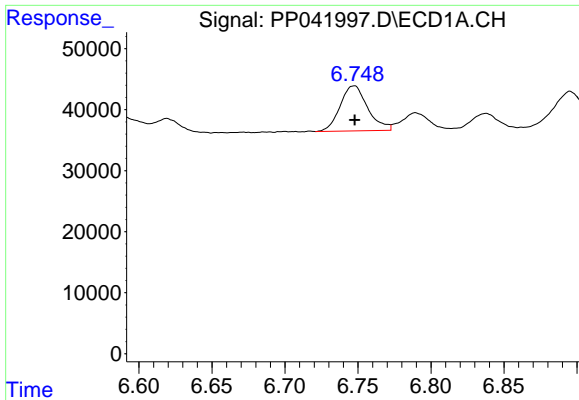
#22 AR-1248-2

R.T.: 6.531 min  
 Delta R.T.: 0.000 min  
 Response: 82400  
 Conc: 262.08 ng/ml



#22 AR-1248-2

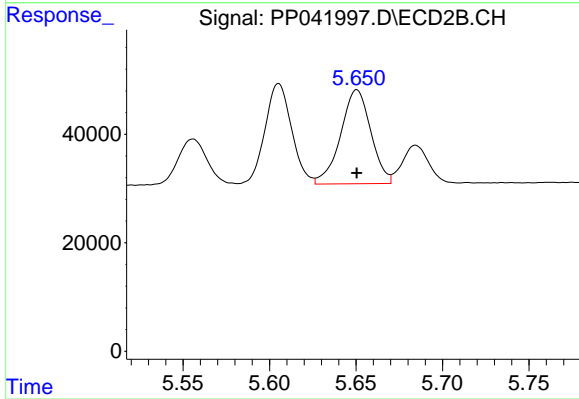
R.T.: 5.605 min  
 Delta R.T.: 0.000 min  
 Response: 200184  
 Conc: 266.83 ng/ml



#23 AR-1248-3

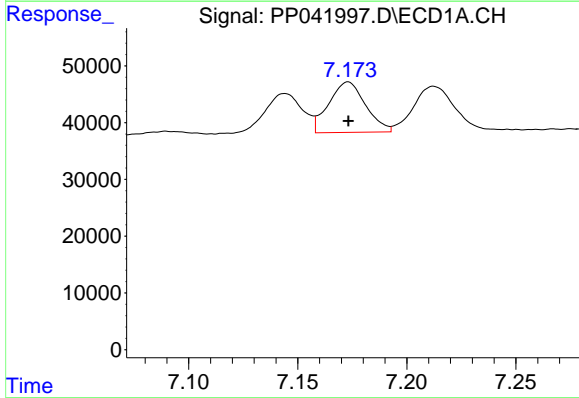
R.T.: 6.748 min  
 Delta R.T.: 0.000 min  
 Response: 97150  
 Conc: 257.73 ng/ml

Instrument :  
 ECD\_P  
 ClientSampleId :  
 AR1248ICC250



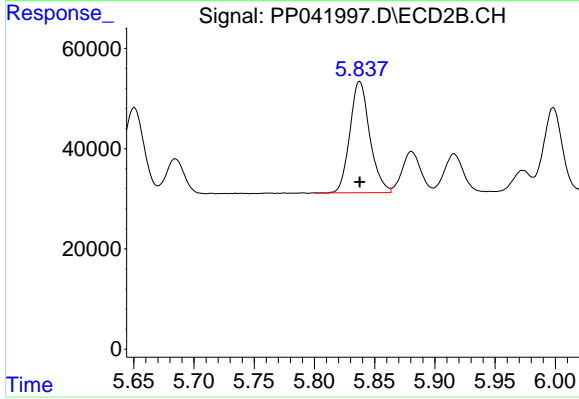
#23 AR-1248-3

R.T.: 5.650 min  
 Delta R.T.: 0.000 min  
 Response: 210549  
 Conc: 263.10 ng/ml



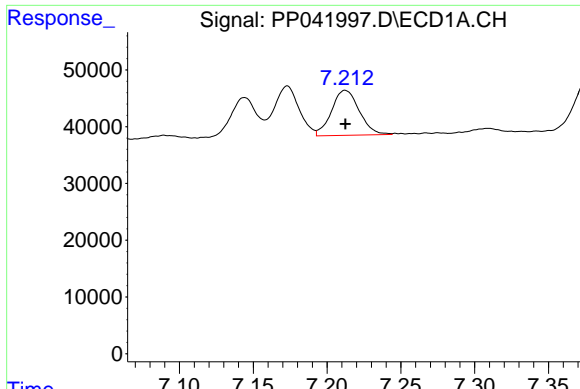
#24 AR-1248-4

R.T.: 7.173 min  
 Delta R.T.: 0.000 min  
 Response: 104491  
 Conc: 255.05 ng/ml



#24 AR-1248-4

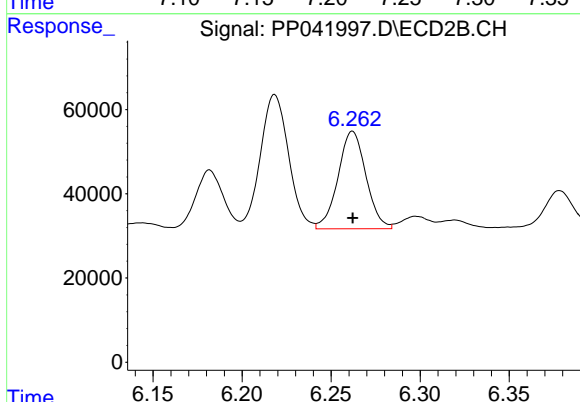
R.T.: 5.838 min  
 Delta R.T.: 0.000 min  
 Response: 254904  
 Conc: 264.93 ng/ml



#25 AR-1248-5

R.T.: 7.212 min  
 Delta R.T.: 0.000 min  
 Response: 103952  
 Conc: 258.23 ng/ml

Instrument :  
 ECD\_P  
 ClientSampleId :  
 AR1248ICC250



#25 AR-1248-5

R.T.: 6.262 min  
 Delta R.T.: 0.000 min  
 Response: 253458  
 Conc: 267.00 ng/ml