

Data Path : Z:\pestpcbsrv\HPCHEM1\ECD_P\Data\PP121718\
 Data File : PP028503.D
 Signal(s) : Signal #1: ECD1A.CH Signal #2: ECD2B.CH
 Acq On : 17 Dec 2018 22:32
 Operator : EI\MA
 Sample : J6403-44
 Misc :
 ALS Vial : 19 Sample Multiplier: 1

Instrument :
 ECD_P
ClientSampleId :
 TP-6-A

Manual Integrations
APPROVED
 Sohil
 12/18/2018 4:48:54 PM

Integration File signal 1: autoint1.e
 Integration File signal 2: autoint2.e
 Quant Time: Dec 18 02:59:59 2018
 Quant Method : Z:\pestpcbsrv\HPCHEM1\ECD_P\methods\PP120718.M
 Quant Title : 8080.M
 QLast Update : Fri Dec 07 14:01:32 2018
 Response via : Initial Calibration
 Integrator: ChemStation 6890 Scale Mode: Large solvent peaks clipped

Volume Inj. : 2 µl
 Signal #1 Phase : ZB-CLPesticides-1 Signal #2 Phase: ZB-CLPesticides-2
 Signal #1 Info : 30M x 0.32mm x0.5 Signal #2 Info : 30M x 0.32mm x 0.25µm

Compound	RT#1	RT#2	Resp#1	Resp#2	ng/ml	ng/ml

System Monitoring Compounds						
4) S 2,4-DCAA	12.094	12.207	133.9E6	188.9E6	512.935m	421.684

Target Compounds

(f)=RT Delta > 1/2 Window (#)=Amounts differ by > 25% (m)=manual int.

Data Path : Z:\pestpcbsrv\HPCHEM1\ECD_P\Data\PP121718\
 Data File : PP028503.D
 Signal(s) : Signal #1: ECD1A.CH Signal #2: ECD2B.CH
 Acq On : 17 Dec 2018 22:32
 Operator : EI\MA
 Sample : J6403-44
 Misc :
 ALS Vial : 19 Sample Multiplier: 1

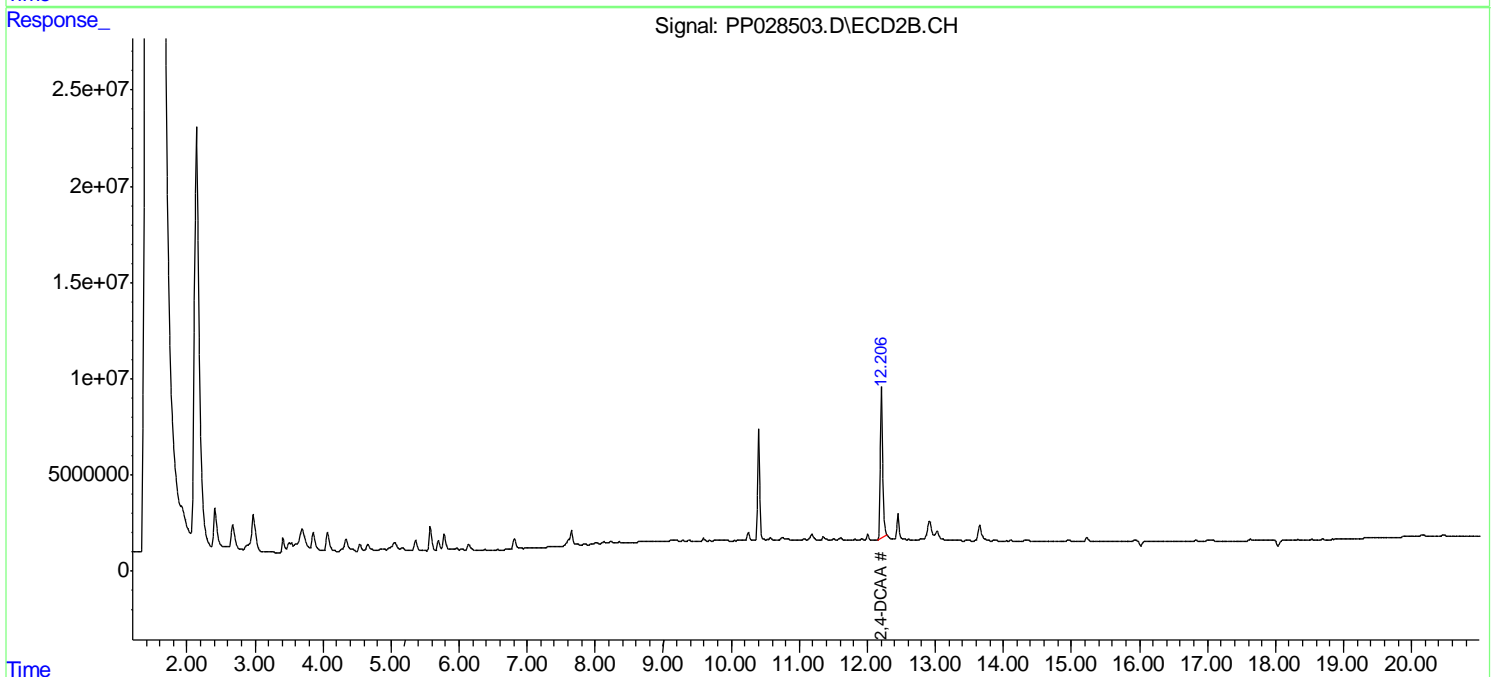
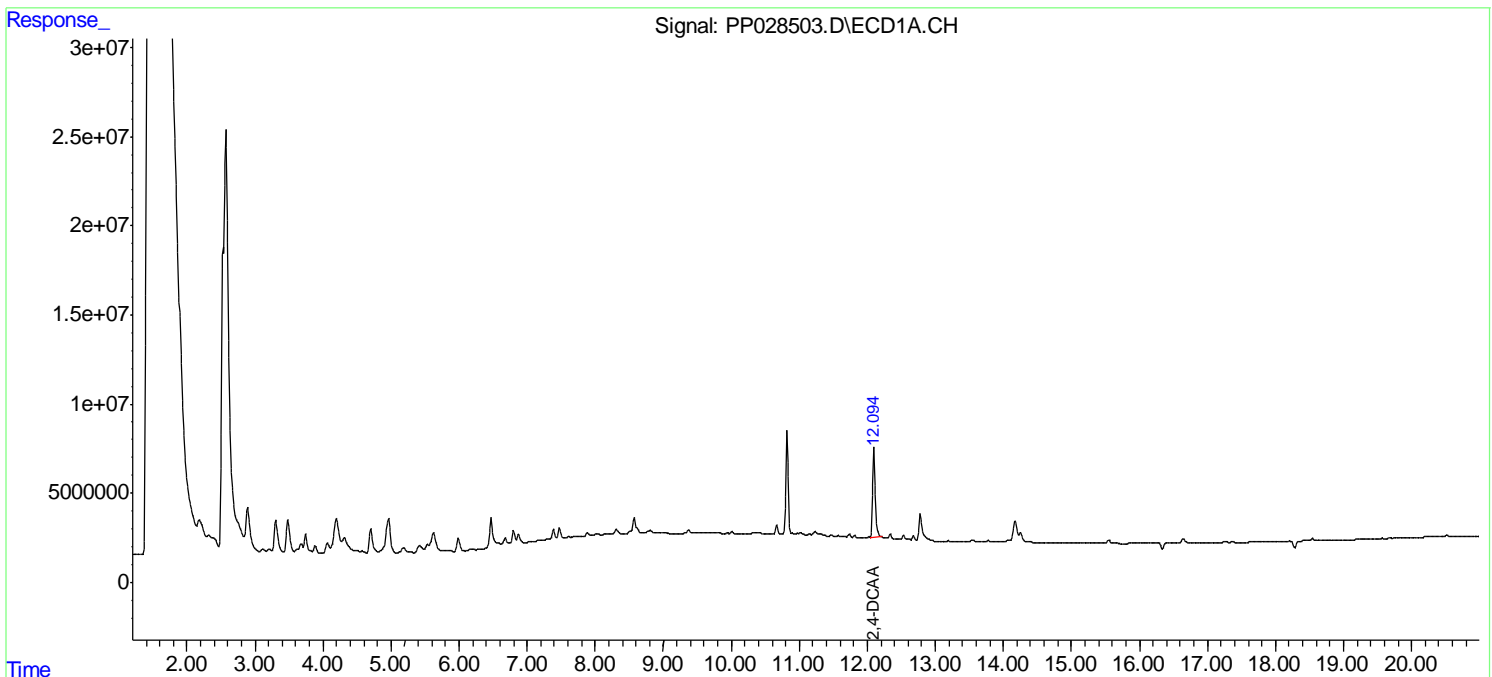
Instrument :
 ECD_P
 ClientSampled :
 TP-6-A

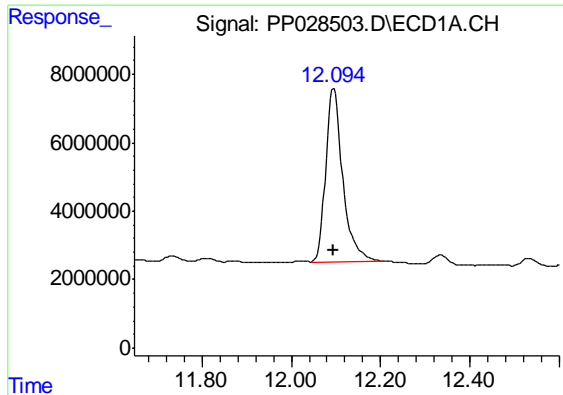
Manual Integrations
 APPROVED

Sohil
 12/18/2018 4:48:54 PM

Integration File signal 1: autoint1.e
 Integration File signal 2: autoint2.e
 Quant Time: Dec 18 02:59:59 2018
 Quant Method : Z:\pestpcbsrv\HPCHEM1\ECD_P\methods\PP120718.M
 Quant Title : 8080.M
 QLast Update : Fri Dec 07 14:01:32 2018
 Response via : Initial Calibration
 Integrator: ChemStation 6890 Scale Mode: Large solvent peaks clipped

Volume Inj. : 2 µl
 Signal #1 Phase : ZB-CLPesticides-1 Signal #2 Phase: ZB-CLPesticides-2
 Signal #1 Info : 30M x 0.32mm x0.5 Signal #2 Info : 30M x 0.32mm x 0.25µm





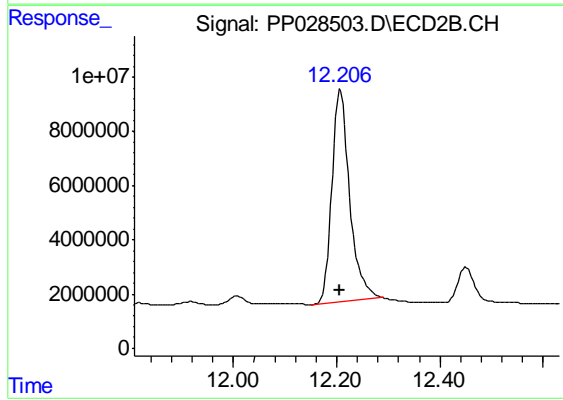
#4 2,4-DCAA

R.T.: 12.094 min
Delta R.T.: 0.000 min
Response: 133905377
Conc: 512.94 ng/ml m

Instrument :
ECD_P
ClientSampled :
TP-6-A

Manual Integrations
APPROVED

Sohil
12/18/2018 4:48:54 PM



#4 2,4-DCAA

R.T.: 12.207 min
Delta R.T.: 0.000 min
Response: 188851457
Conc: 421.68 ng/ml