

Data Path : Z:\pestpcbsrv\HPCHEM1\ECD_P\Data\PP121721\
 Data File : PP042093.D
 Signal(s) : Signal #1: ECD1A.CH Signal #2: ECD2B.CH
 Acq On : 17 Dec 2021 7:46
 Operator : AJ\MA
 Sample : AR1242CCC500
 Misc :
 ALS Vial : 4 Sample Multiplier: 1

Instrument :
 ECD_P
 ClientSampleId :

Integration File signal 1: autoint1.e
 Integration File signal 2: autoint2.e
 Quant Time: Dec 17 08:39:04 2021
 Quant Method : Z:\pestpcbsrv\HPCHEM1\ECD_P\methods\PP121621.M
 Quant Title : GC EXTRACTABLES
 QLast Update : Thu Dec 16 06:21:48 2021
 Response via : Initial Calibration
 Integrator: ChemStation 6890 Scale Mode: Small noise peaks clipped

Volume Inj. : 2 µl
 Signal #1 Phase : ZB-MR1 Signal #2 Phase: ZB-MR2
 Signal #1 Info : 30Mx0.32mmx 0.50µ Signal #2 Info : 30M x 0.32mm x 0.25µm

Compound	RT#1	RT#2	Resp#1	Resp#2	ng/ml	ng/ml
System Monitoring Compounds						
1) SA Tetrachlo...	4.926	4.067	689770	1213665	53.460	49.472
2) SA Decachlor...	10.920	9.424	773987	1028887	58.732	51.173
Target Compounds						
3) L1 AR-1016-1	6.234	5.337	165999	376495	406.018	365.026
4) L1 AR-1016-2	6.257	5.358	242753	506122	402.288	361.682
5) L1 AR-1016-3	6.324	5.552	155314	284771	410.363	366.411
6) L1 AR-1016-4	6.429	5.603	130325	209048	425.803	344.289
7) L1 AR-1016-5	6.745	5.834	127642	264590	432.599	330.937
8) L2 AR-1221-1	5.164	4.328	23978	36402	162.247	132.981
9) L2 AR-1221-2	5.268	4.428	30621	57271	290.767	264.587
10) L2 AR-1221-3	5.352	4.519	104666	212087	323.772	290.357
11) L3 AR-1232-1	5.352	4.519	104666	212087	405.375	348.770
12) L3 AR-1232-2	5.941	5.358	128771	506122	949.061	898.623
13) L3 AR-1232-3	6.257	5.552	242753	284771	1023.455	929.315
14) L3 AR-1232-4	6.429	5.647	130325	267384	1095.697	1017.321
15) L3 AR-1232-5	6.530	5.834	99062	264590	1268.168	940.890 #
16) L4 AR-1242-1	6.234	5.337	165999	376495	555.348	490.628
17) L4 AR-1242-2	6.257	5.358	242753	506122	549.470	494.260
18) L4 AR-1242-3	6.324	5.552	155314	284771	571.526	493.477
19) L4 AR-1242-4	6.429	5.647	130325	267384	569.669	483.853
20) L4 AR-1242-5	7.212	6.215	140769	349887	602.731	499.530
21) L5 AR-1248-1	6.234	5.337	165999	376495	745.214	680.842
22) L5 AR-1248-2	6.530	5.603	99062	209048	313.904	272.383
23) L5 AR-1248-3	6.745	5.647	127642	267384	337.747	329.220
24) L5 AR-1248-4	7.172	5.834	131198	264590	326.965	275.671
25) L5 AR-1248-5	7.212	6.259	140769	310037	351.165	321.859
26) L6 AR-1254-1	7.143	6.215	101727	349887	221.805	242.570
27) L6 AR-1254-2	7.376	6.375	123436	89511	167.129	71.058 #
28) L6 AR-1254-3	7.753	6.800	57913	118671	74.122	60.713
29) L6 AR-1254-4	8.048	7.039	48397	77597	84.562	66.302
30) L6 AR-1254-5	8.479	7.472	15085	31276	23.952	19.874
31) L7 AR-1260-1	7.931	6.950	13256	44941	22.504	35.009 #
32) L7 AR-1260-2	8.192	7.135	19702	21378	28.955	14.074 #
33) L7 AR-1260-3	8.556	7.291	706	20415	1.279	14.669 #
34) L7 AR-1260-4	8.776	0.000	16578	0	26.258	N.D. #
35) L7 AR-1260-5	9.093f	0.000	714	0	0.592	N.D. #
36) L8 AR-1262-1	8.556	7.472	706	31276	0.958	39.213 #
37) L8 AR-1262-2	9.093f	0.000	714	0	0.574	N.D. #
38) L8 AR-1262-3	0.000	8.341f	0	21941	N.D.	20.996 #
41) L9 AR-1268-1	0.000	8.341f	0	21941	N.D.	8.074 #
43) L9 AR-1268-3	9.753	0.000	4500	0	3.472	N.D. #

Data Path : Z:\pestpcbsrv\HPCHEM1\ECD_P\Data\PP121721\
 Data File : PP042093.D
 Signal(s) : Signal #1: ECD1A.CH Signal #2: ECD2B.CH
 Acq On : 17 Dec 2021 7:46
 Operator : AJ\MA
 Sample : AR1242CCC500
 Misc :
 ALS Vial : 4 Sample Multiplier: 1

Instrument :
 ECD_P
 ClientSampleId :

Integration File signal 1: autoint1.e
 Integration File signal 2: autoint2.e
 Quant Time: Dec 17 08:39:04 2021
 Quant Method : Z:\pestpcbsrv\HPCHEM1\ECD_P\methods\PP121621.M
 Quant Title : GC EXTRACTABLES
 QLast Update : Thu Dec 16 06:21:48 2021
 Response via : Initial Calibration
 Integrator: ChemStation 6890 Scale Mode: Small noise peaks clipped

Volume Inj. : 2 µl
 Signal #1 Phase : ZB-MR1 Signal #2 Phase: ZB-MR2
 Signal #1 Info : 30Mx0.32mmx 0.50µ Signal #2 Info : 30M x 0.32mm x 0.25µm

Compound	RT#1	RT#2	Resp#1	Resp#2	ng/ml	ng/ml
----------	------	------	--------	--------	-------	-------

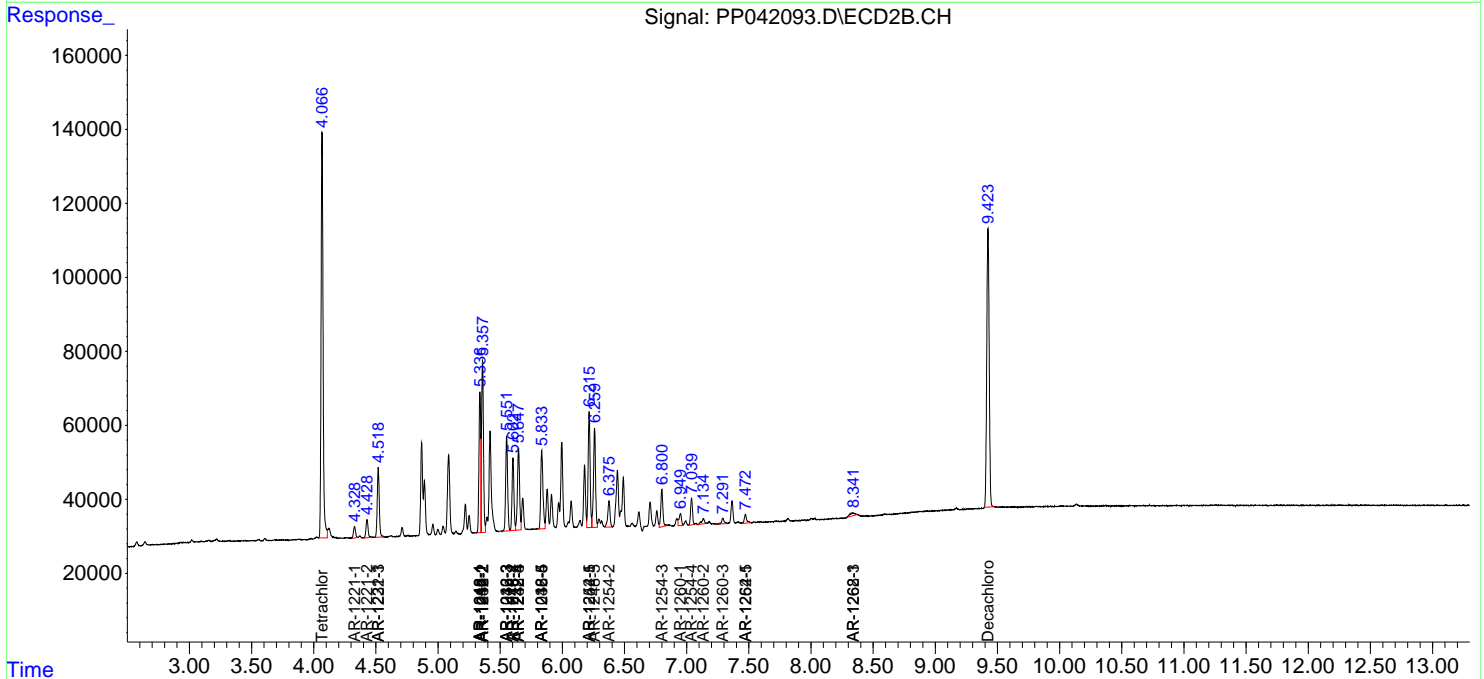
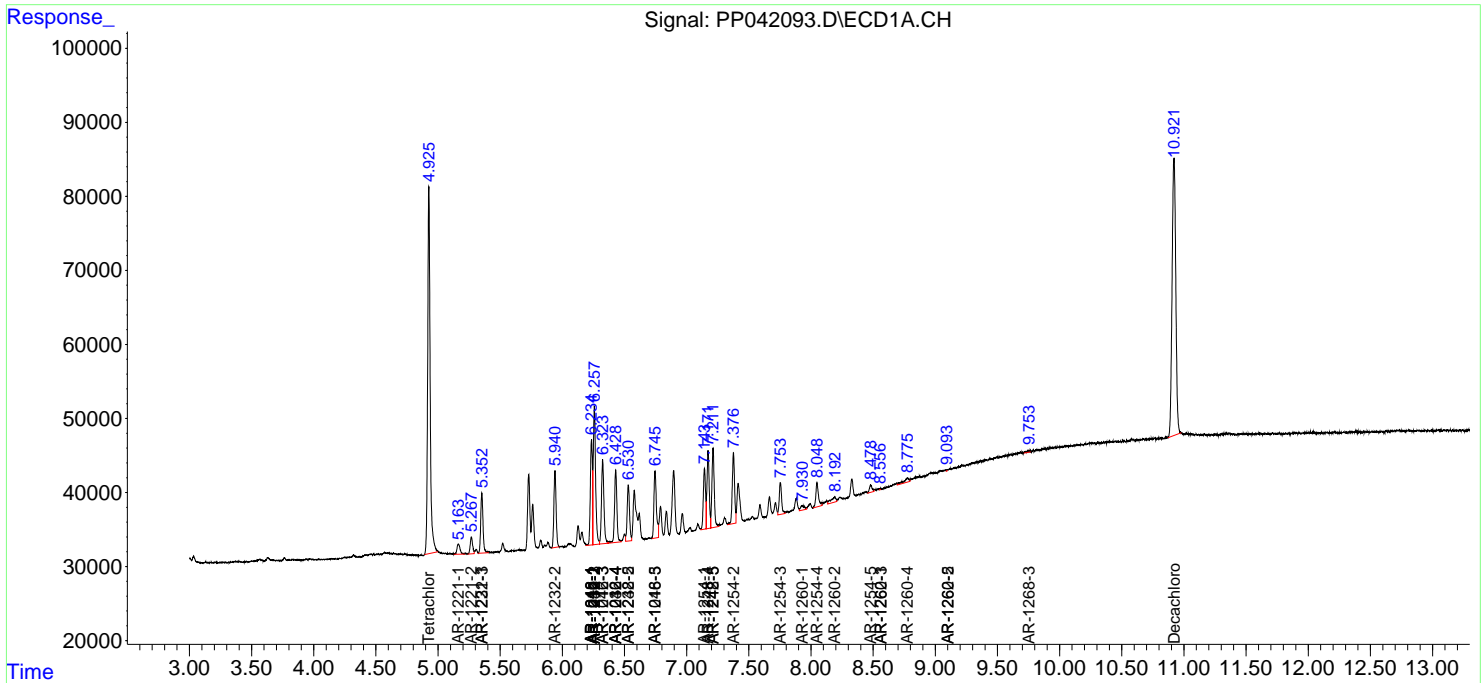
(f)=RT Delta > 1/2 Window (#)=Amounts differ by > 25% (m)=manual int.

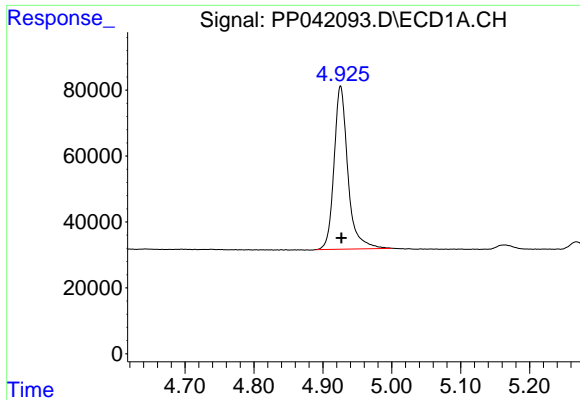
Data Path : Z:\pestpcbsrv\HPCHEM1\ECD_P\Data\PP121721\
 Data File : PP042093.D
 Signal(s) : Signal #1: ECD1A.CH Signal #2: ECD2B.CH
 Acq On : 17 Dec 2021 7:46
 Operator : AJ\MA
 Sample : AR1242CCC500
 Misc :
 ALS Vial : 4 Sample Multiplier: 1

Instrument :
 ECD_P
 ClientSampleId :

Integration File signal 1: autoint1.e
 Integration File signal 2: autoint2.e
 Quant Time: Dec 17 08:39:04 2021
 Quant Method : Z:\pestpcbsrv\HPCHEM1\ECD_P\methods\PP121621.M
 Quant Title : GC EXTRACTABLES
 QLast Update : Thu Dec 16 06:21:48 2021
 Response via : Initial Calibration
 Integrator: ChemStation 6890 Scale Mode: Small noise peaks clipped

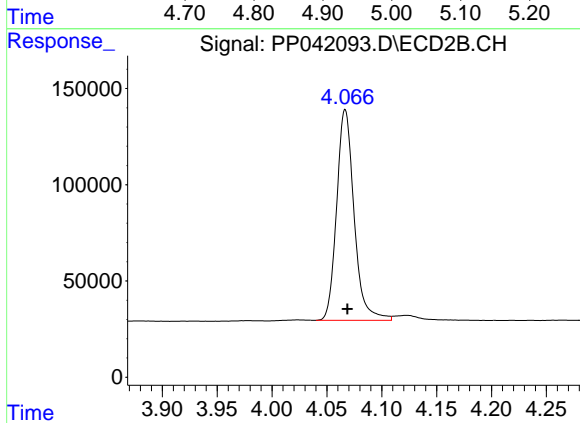
Volume Inj. : 2 µl
 Signal #1 Phase : ZB-MR1 Signal #2 Phase: ZB-MR2
 Signal #1 Info : 30Mx0.32mmx 0.50µ Signal #2 Info : 30M x 0.32mm x 0.25µm



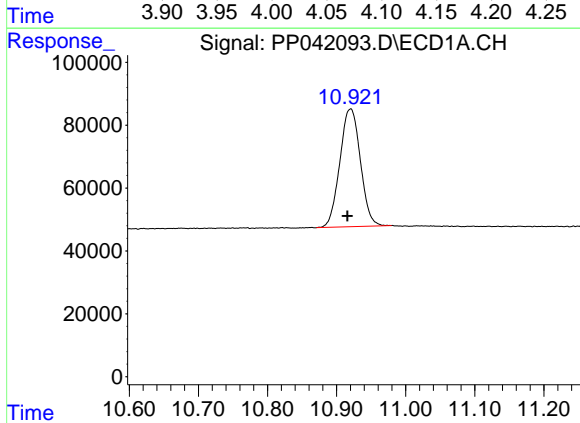


#1 Tetrachloro-m-xylene
 R.T.: 4.926 min
 Delta R.T.: -0.001 min
 Response: 689770
 Conc: 53.46 ng/ml

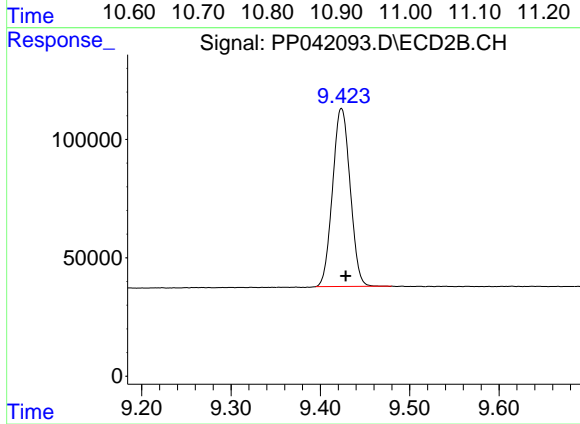
Instrument :
 ECD_P
 ClientSampleId :



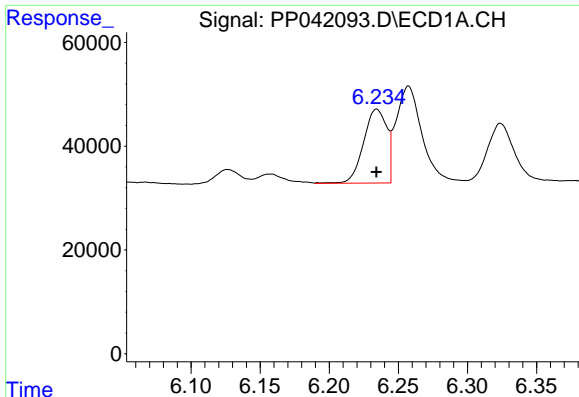
#1 Tetrachloro-m-xylene
 R.T.: 4.067 min
 Delta R.T.: -0.002 min
 Response: 1213665
 Conc: 49.47 ng/ml



#2 Decachlorobiphenyl
 R.T.: 10.920 min
 Delta R.T.: 0.005 min
 Response: 773987
 Conc: 58.73 ng/ml



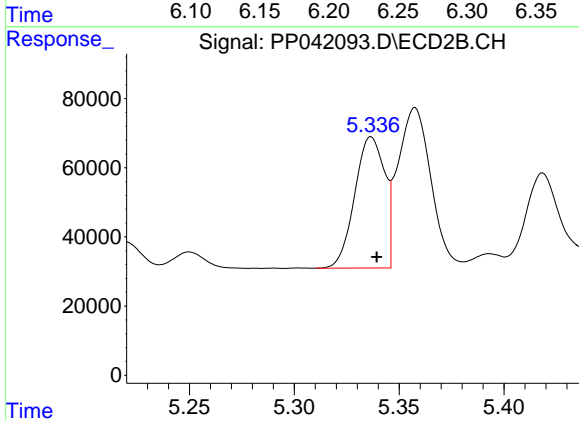
#2 Decachlorobiphenyl
 R.T.: 9.424 min
 Delta R.T.: -0.005 min
 Response: 1028887
 Conc: 51.17 ng/ml



#3 AR-1016-1

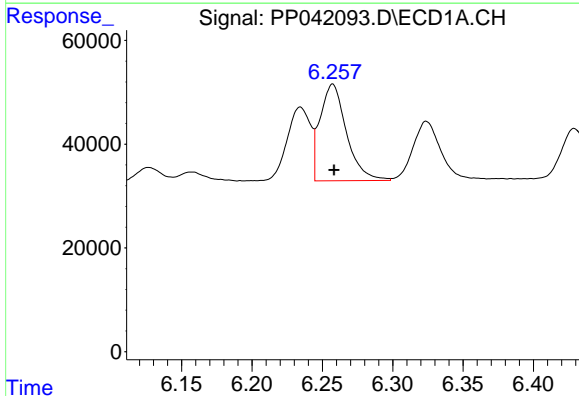
R.T.: 6.234 min
 Delta R.T.: 0.000 min
 Response: 165999
 Conc: 406.02 ng/ml

Instrument :
 ECD_P
 ClientSampleId :



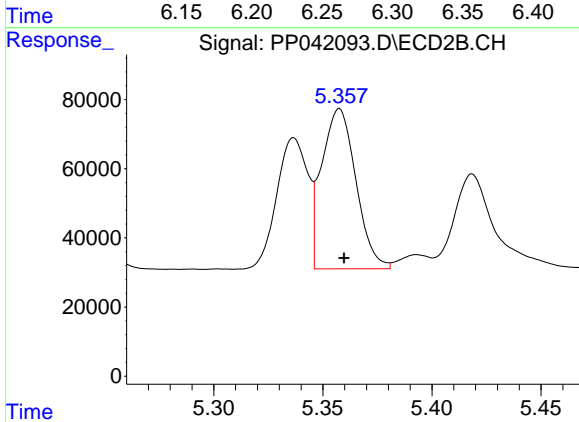
#3 AR-1016-1

R.T.: 5.337 min
 Delta R.T.: -0.003 min
 Response: 376495
 Conc: 365.03 ng/ml



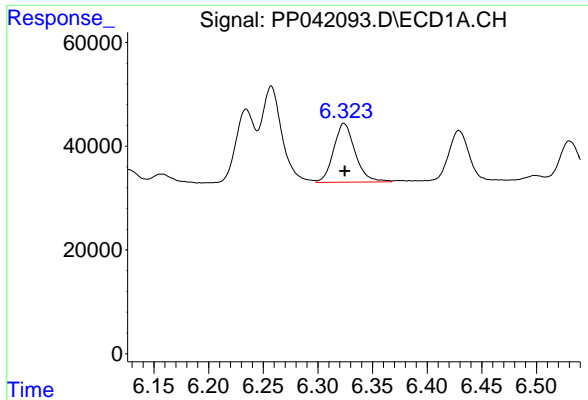
#4 AR-1016-2

R.T.: 6.257 min
 Delta R.T.: 0.000 min
 Response: 242753
 Conc: 402.29 ng/ml



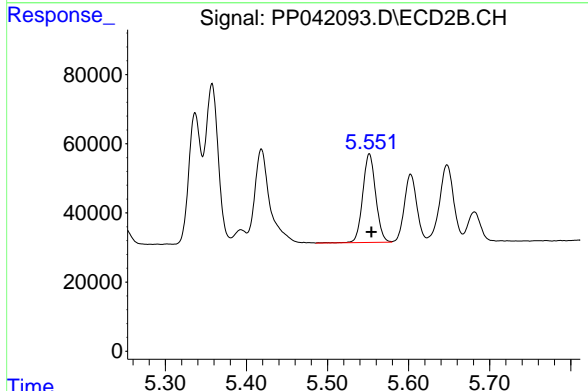
#4 AR-1016-2

R.T.: 5.358 min
 Delta R.T.: -0.002 min
 Response: 506122
 Conc: 361.68 ng/ml

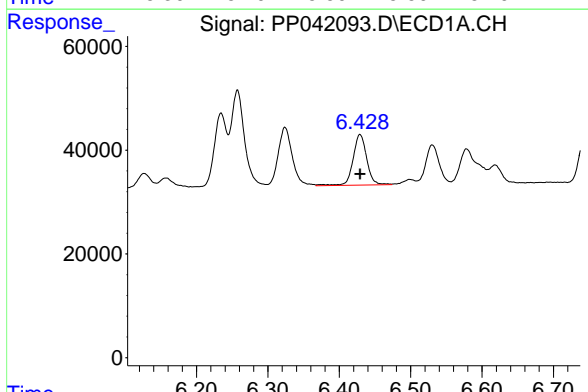


#5 AR-1016-3
 R.T.: 6.324 min
 Delta R.T.: 0.000 min
 Response: 155314
 Conc: 410.36 ng/ml

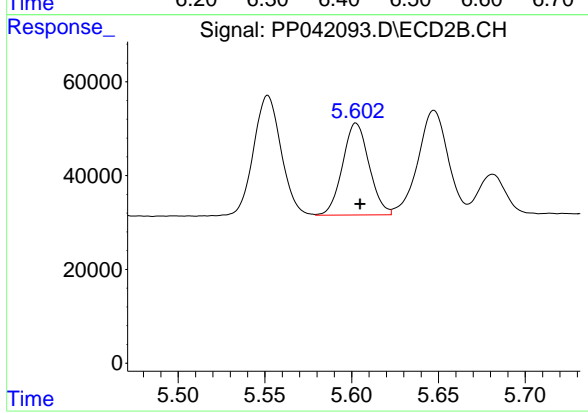
Instrument :
 ECD_P
 ClientSampleId :



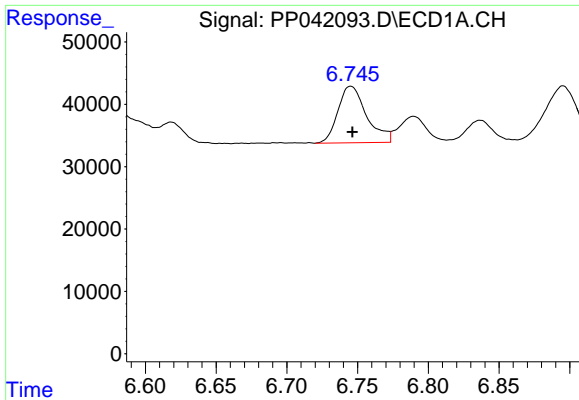
#5 AR-1016-3
 R.T.: 5.552 min
 Delta R.T.: -0.003 min
 Response: 284771
 Conc: 366.41 ng/ml



#6 AR-1016-4
 R.T.: 6.429 min
 Delta R.T.: 0.000 min
 Response: 130325
 Conc: 425.80 ng/ml



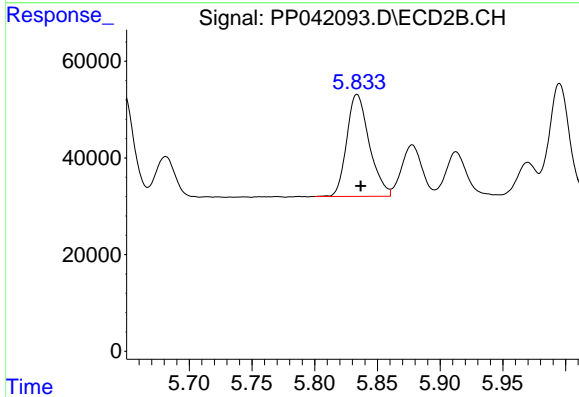
#6 AR-1016-4
 R.T.: 5.603 min
 Delta R.T.: -0.002 min
 Response: 209048
 Conc: 344.29 ng/ml



#7 AR-1016-5

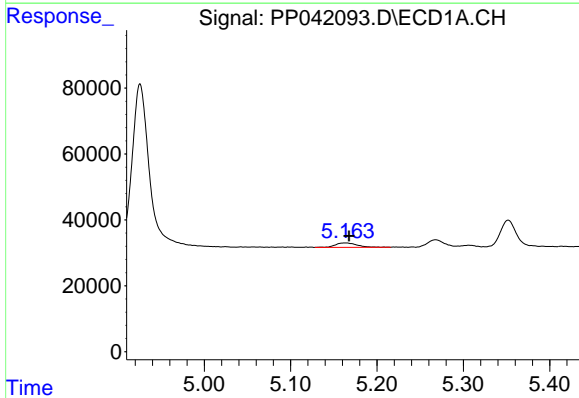
R.T.: 6.745 min
 Delta R.T.: -0.001 min
 Response: 127642
 Conc: 432.60 ng/ml

Instrument :
 ECD_P
 ClientSampleId :



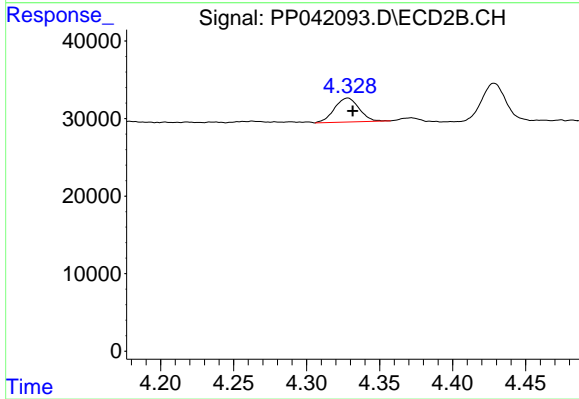
#7 AR-1016-5

R.T.: 5.834 min
 Delta R.T.: -0.003 min
 Response: 264590
 Conc: 330.94 ng/ml



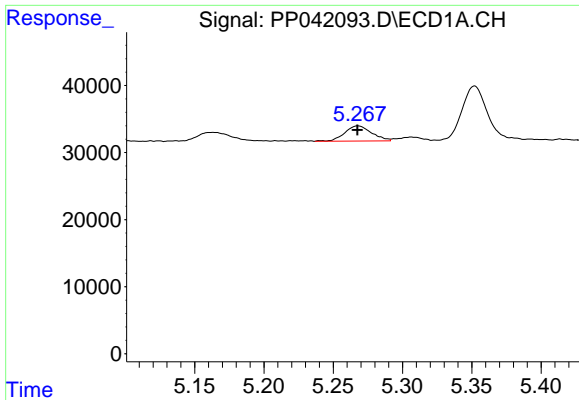
#8 AR-1221-1

R.T.: 5.164 min
 Delta R.T.: -0.004 min
 Response: 23978
 Conc: 162.25 ng/ml



#8 AR-1221-1

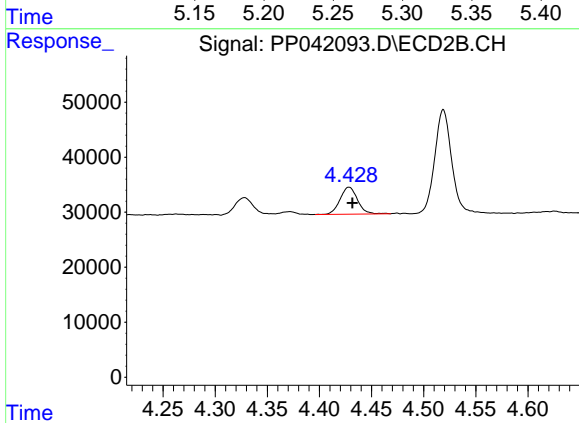
R.T.: 4.328 min
 Delta R.T.: -0.003 min
 Response: 36402
 Conc: 132.98 ng/ml



#9 AR-1221-2

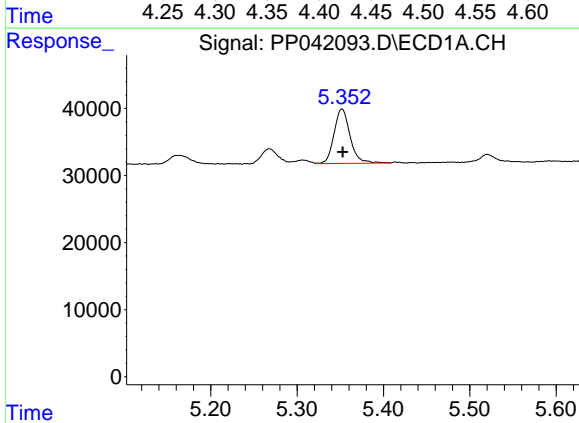
R.T.: 5.268 min
 Delta R.T.: 0.000 min
 Response: 30621
 Conc: 290.77 ng/ml

Instrument :
 ECD_P
 ClientSampleId :



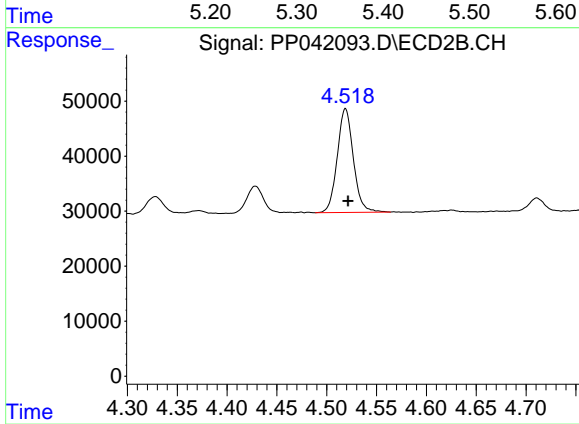
#9 AR-1221-2

R.T.: 4.428 min
 Delta R.T.: -0.003 min
 Response: 57271
 Conc: 264.59 ng/ml



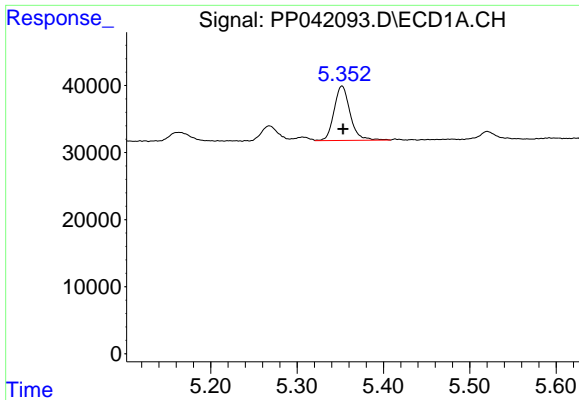
#10 AR-1221-3

R.T.: 5.352 min
 Delta R.T.: 0.000 min
 Response: 104666
 Conc: 323.77 ng/ml



#10 AR-1221-3

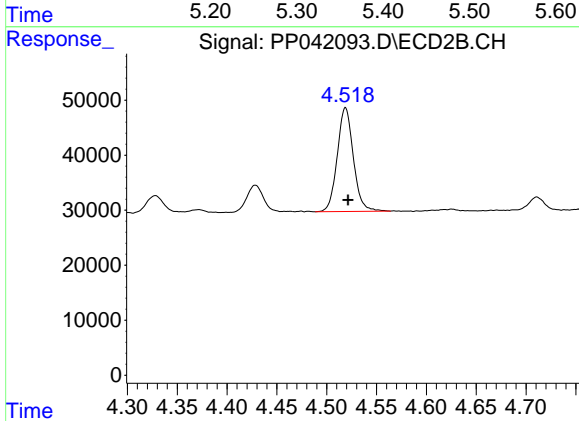
R.T.: 4.519 min
 Delta R.T.: -0.003 min
 Response: 212087
 Conc: 290.36 ng/ml



#11 AR-1232-1

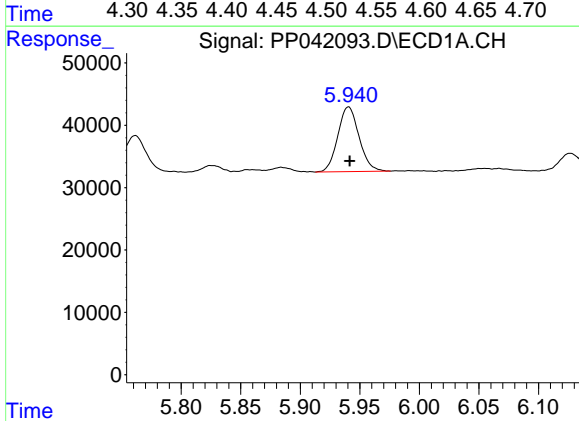
R.T.: 5.352 min
 Delta R.T.: -0.001 min
 Response: 104666
 Conc: 405.37 ng/ml

Instrument :
 ECD_P
 ClientSampleId :



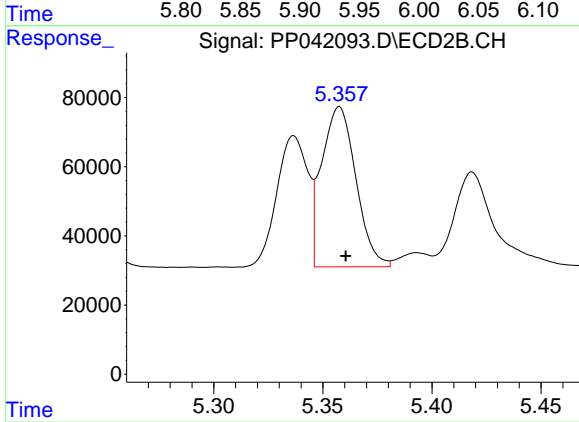
#11 AR-1232-1

R.T.: 4.519 min
 Delta R.T.: -0.003 min
 Response: 212087
 Conc: 348.77 ng/ml



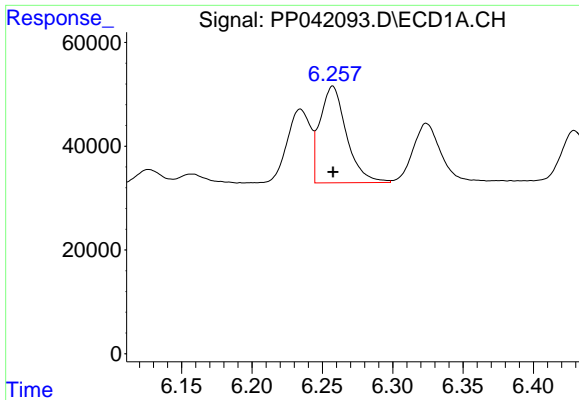
#12 AR-1232-2

R.T.: 5.941 min
 Delta R.T.: -0.001 min
 Response: 128771
 Conc: 949.06 ng/ml



#12 AR-1232-2

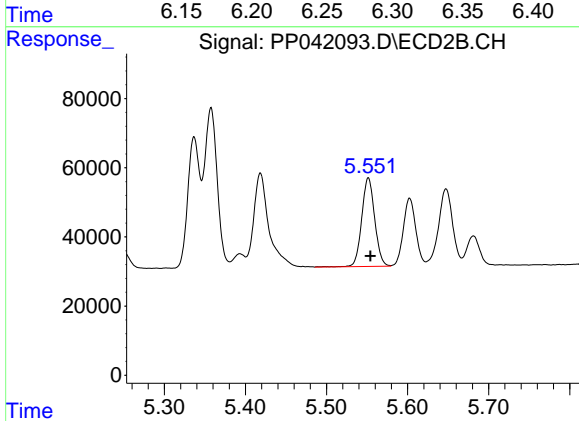
R.T.: 5.358 min
 Delta R.T.: -0.003 min
 Response: 506122
 Conc: 898.62 ng/ml



#13 AR-1232-3

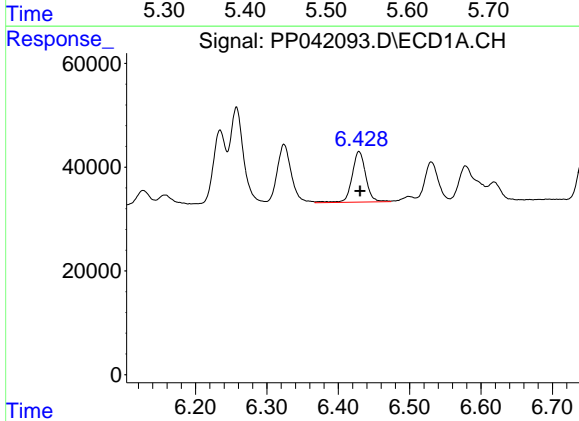
R.T.: 6.257 min
 Delta R.T.: 0.000 min
 Response: 242753
 Conc: 1023.45 ng/ml

Instrument :
 ECD_P
 ClientSampleId :



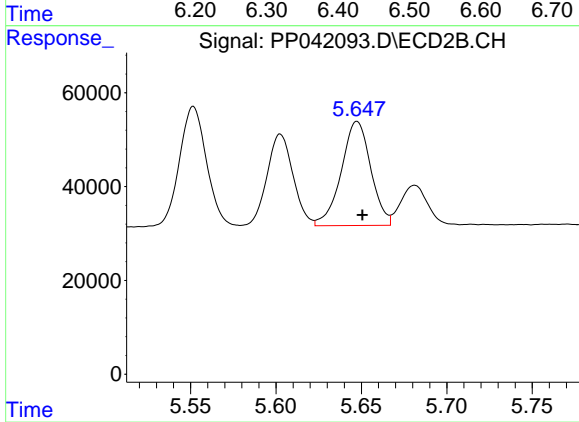
#13 AR-1232-3

R.T.: 5.552 min
 Delta R.T.: -0.003 min
 Response: 284771
 Conc: 929.32 ng/ml



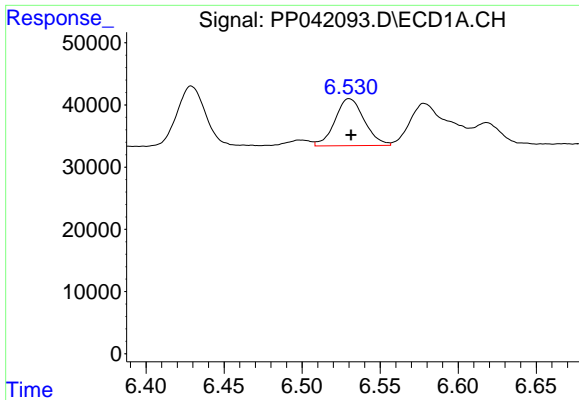
#14 AR-1232-4

R.T.: 6.429 min
 Delta R.T.: -0.001 min
 Response: 130325
 Conc: 1095.70 ng/ml



#14 AR-1232-4

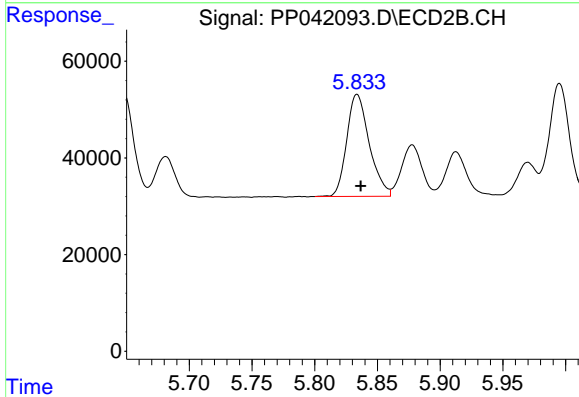
R.T.: 5.647 min
 Delta R.T.: -0.003 min
 Response: 267384
 Conc: 1017.32 ng/ml



#15 AR-1232-5

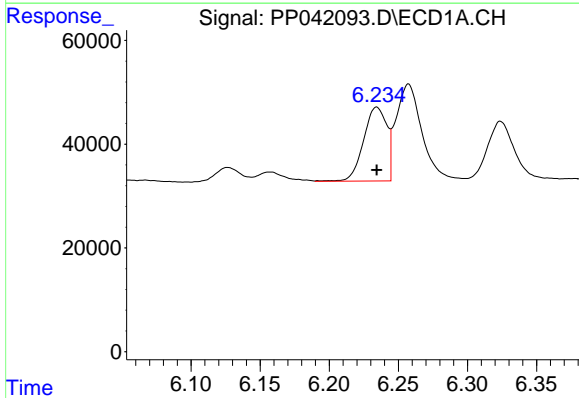
R.T.: 6.530 min
 Delta R.T.: -0.001 min
 Response: 99062
 Conc: 1268.17 ng/ml

Instrument :
 ECD_P
 ClientSampleId :



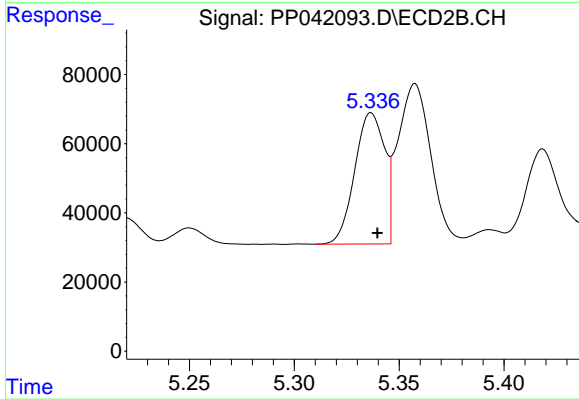
#15 AR-1232-5

R.T.: 5.834 min
 Delta R.T.: -0.003 min
 Response: 264590
 Conc: 940.89 ng/ml



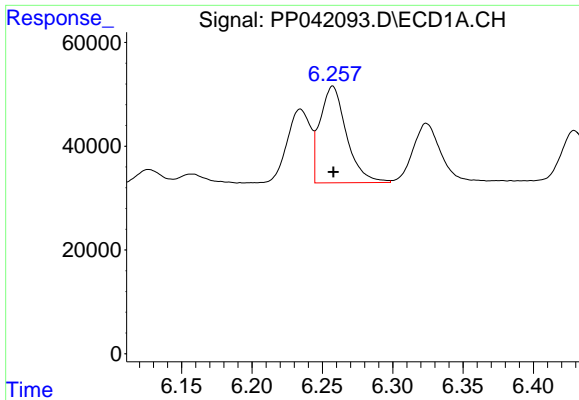
#16 AR-1242-1

R.T.: 6.234 min
 Delta R.T.: 0.000 min
 Response: 165999
 Conc: 555.35 ng/ml



#16 AR-1242-1

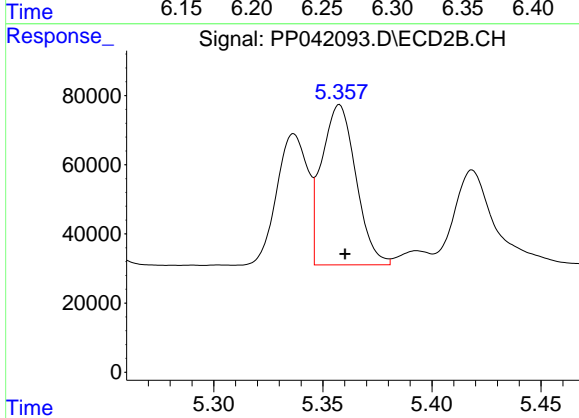
R.T.: 5.337 min
 Delta R.T.: -0.003 min
 Response: 376495
 Conc: 490.63 ng/ml



#17 AR-1242-2

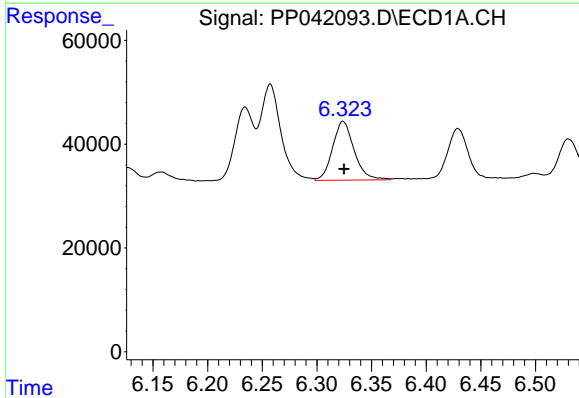
R.T.: 6.257 min
 Delta R.T.: 0.000 min
 Response: 242753
 Conc: 549.47 ng/ml

Instrument :
 ECD_P
 ClientSampleId :



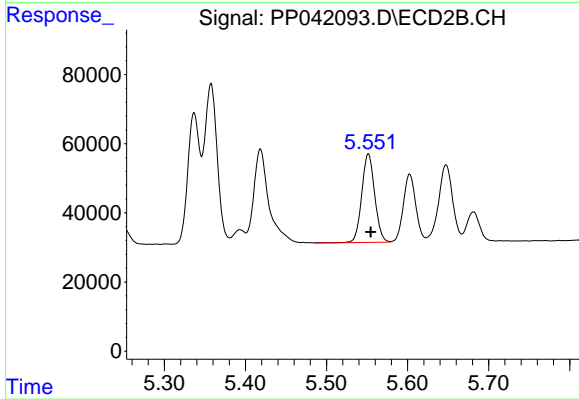
#17 AR-1242-2

R.T.: 5.358 min
 Delta R.T.: -0.003 min
 Response: 506122
 Conc: 494.26 ng/ml



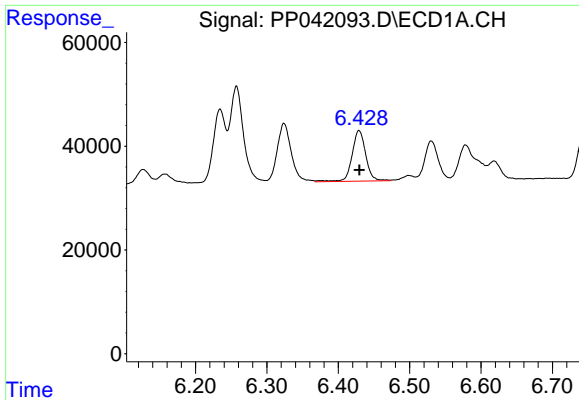
#18 AR-1242-3

R.T.: 6.324 min
 Delta R.T.: 0.000 min
 Response: 155314
 Conc: 571.53 ng/ml



#18 AR-1242-3

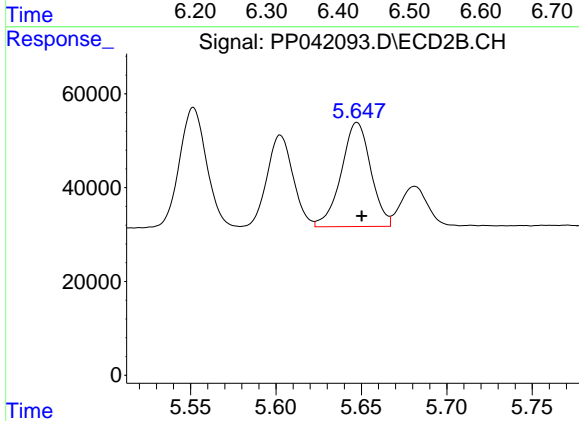
R.T.: 5.552 min
 Delta R.T.: -0.003 min
 Response: 284771
 Conc: 493.48 ng/ml



#19 AR-1242-4

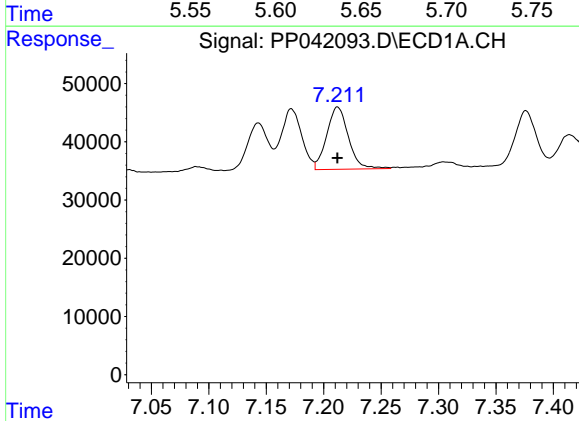
R.T.: 6.429 min
 Delta R.T.: 0.000 min
 Response: 130325
 Conc: 569.67 ng/ml

Instrument :
 ECD_P
 ClientSampleId :



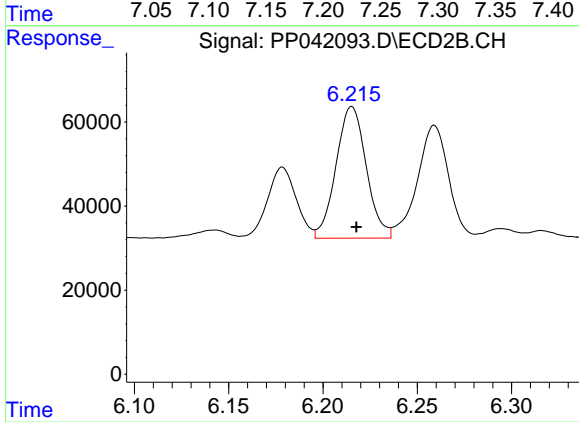
#19 AR-1242-4

R.T.: 5.647 min
 Delta R.T.: -0.003 min
 Response: 267384
 Conc: 483.85 ng/ml



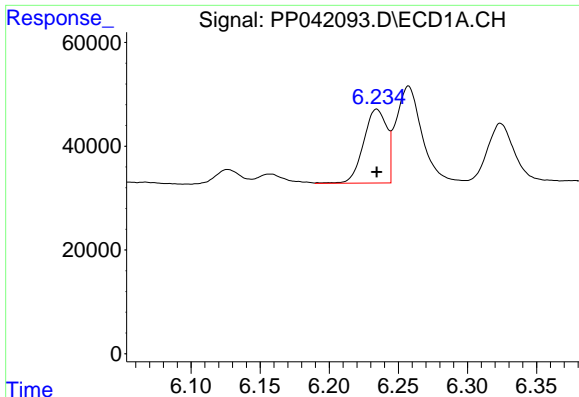
#20 AR-1242-5

R.T.: 7.212 min
 Delta R.T.: 0.000 min
 Response: 140769
 Conc: 602.73 ng/ml



#20 AR-1242-5

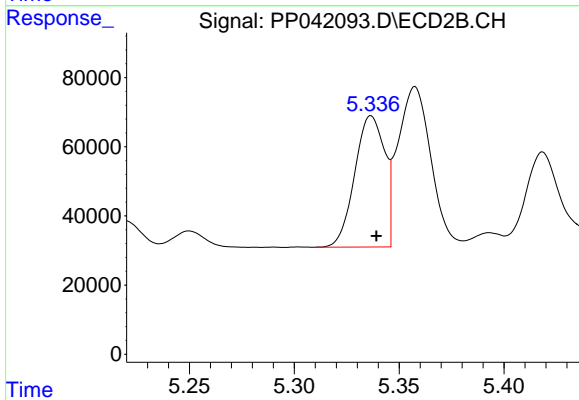
R.T.: 6.215 min
 Delta R.T.: -0.003 min
 Response: 349887
 Conc: 499.53 ng/ml



#21 AR-1248-1

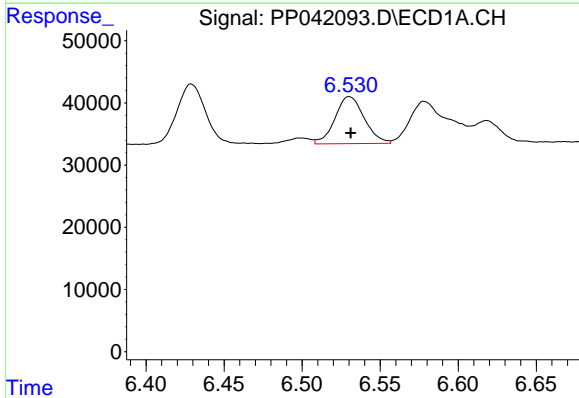
R.T.: 6.234 min
 Delta R.T.: 0.000 min
 Response: 165999
 Conc: 745.21 ng/ml

Instrument :
 ECD_P
 ClientSampleId :



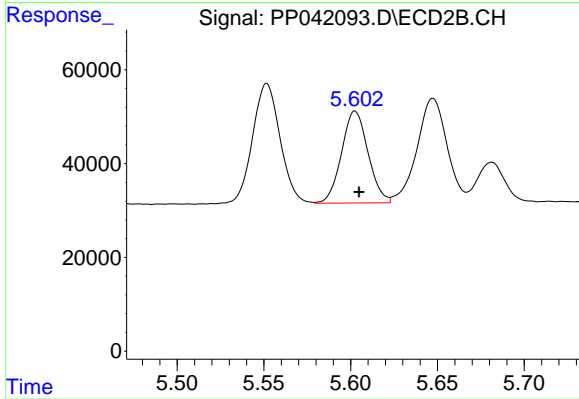
#21 AR-1248-1

R.T.: 5.337 min
 Delta R.T.: -0.003 min
 Response: 376495
 Conc: 680.84 ng/ml



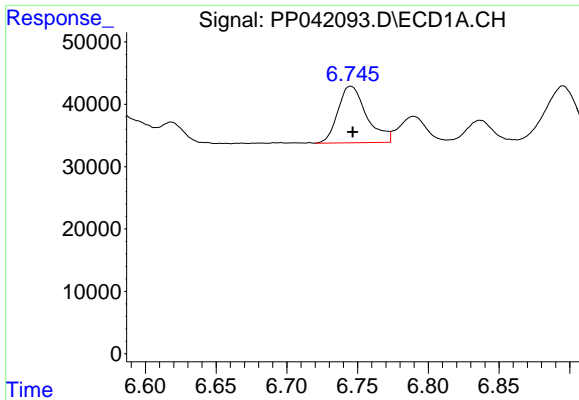
#22 AR-1248-2

R.T.: 6.530 min
 Delta R.T.: -0.001 min
 Response: 99062
 Conc: 313.90 ng/ml



#22 AR-1248-2

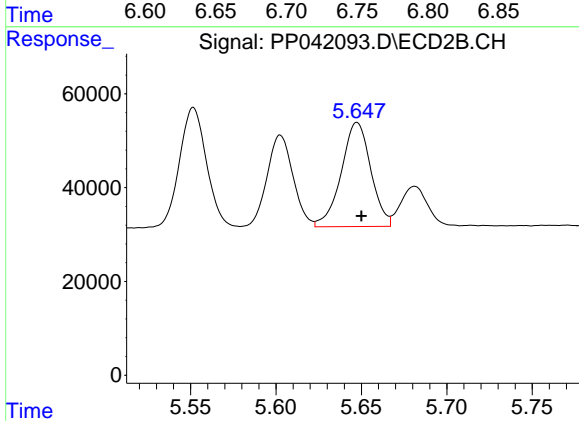
R.T.: 5.603 min
 Delta R.T.: -0.002 min
 Response: 209048
 Conc: 272.38 ng/ml



#23 AR-1248-3

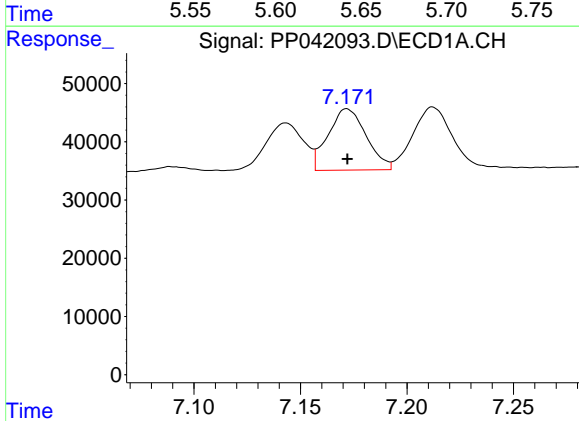
R.T.: 6.745 min
 Delta R.T.: -0.002 min
 Response: 127642
 Conc: 337.75 ng/ml

Instrument :
 ECD_P
 ClientSampleId :



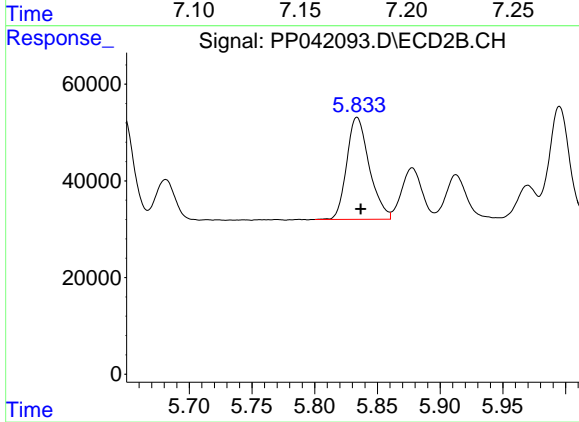
#23 AR-1248-3

R.T.: 5.647 min
 Delta R.T.: -0.003 min
 Response: 267384
 Conc: 329.22 ng/ml



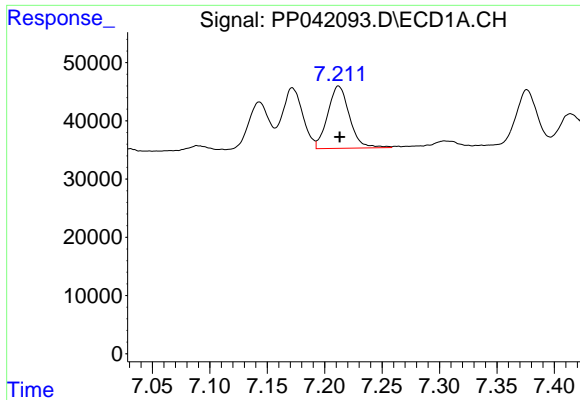
#24 AR-1248-4

R.T.: 7.172 min
 Delta R.T.: 0.000 min
 Response: 131198
 Conc: 326.97 ng/ml



#24 AR-1248-4

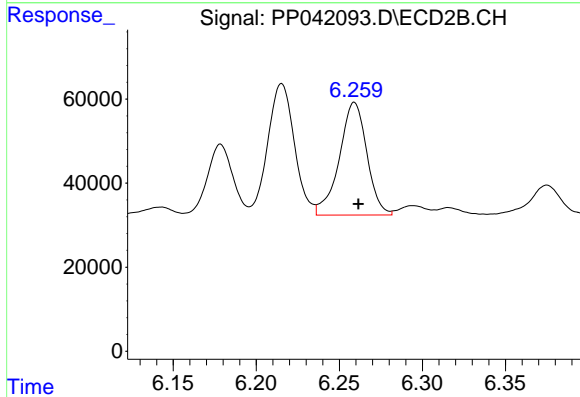
R.T.: 5.834 min
 Delta R.T.: -0.003 min
 Response: 264590
 Conc: 275.67 ng/ml



#25 AR-1248-5

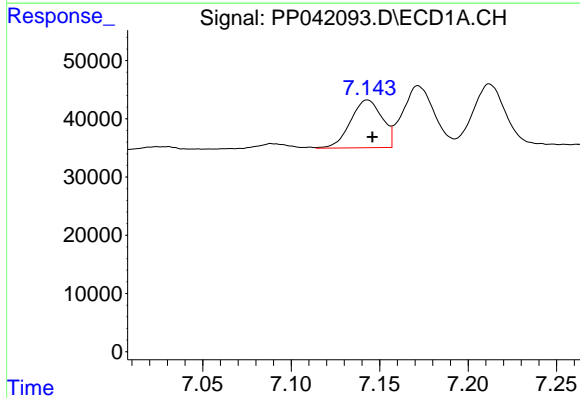
R.T.: 7.212 min
 Delta R.T.: 0.000 min
 Response: 140769
 Conc: 351.17 ng/ml

Instrument :
 ECD_P
 ClientSampleId :



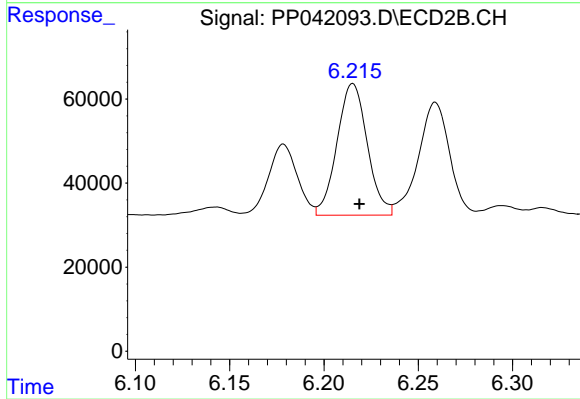
#25 AR-1248-5

R.T.: 6.259 min
 Delta R.T.: -0.002 min
 Response: 310037
 Conc: 321.86 ng/ml



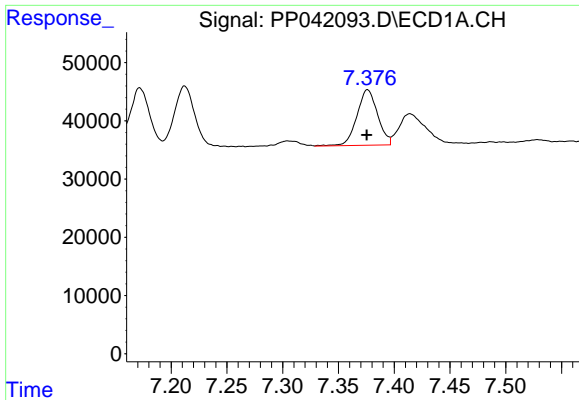
#26 AR-1254-1

R.T.: 7.143 min
 Delta R.T.: -0.003 min
 Response: 101727
 Conc: 221.80 ng/ml



#26 AR-1254-1

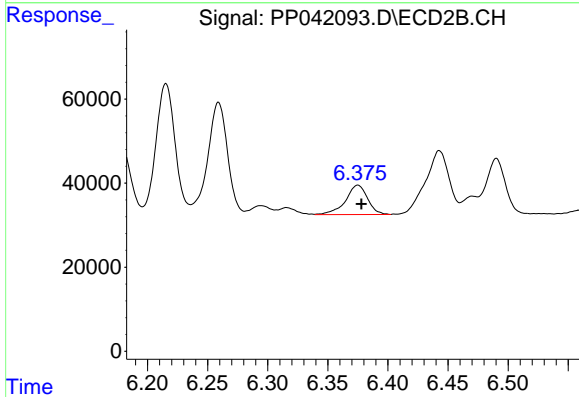
R.T.: 6.215 min
 Delta R.T.: -0.003 min
 Response: 349887
 Conc: 242.57 ng/ml



#27 AR-1254-2

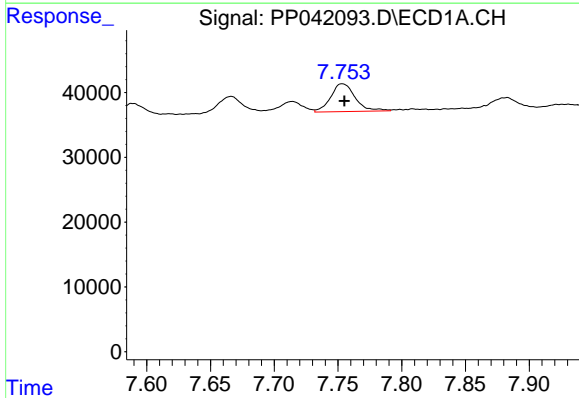
R.T.: 7.376 min
 Delta R.T.: 0.000 min
 Response: 123436
 Conc: 167.13 ng/ml

Instrument :
 ECD_P
 ClientSampleId :



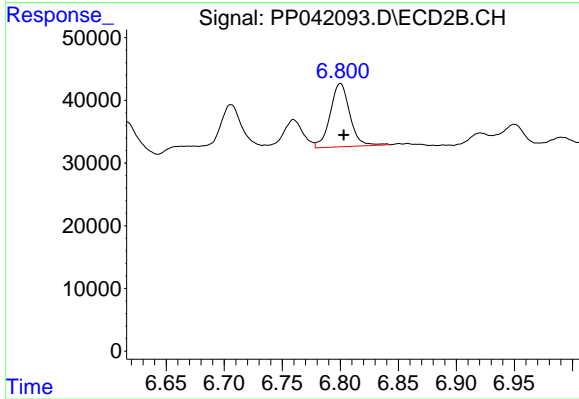
#27 AR-1254-2

R.T.: 6.375 min
 Delta R.T.: -0.003 min
 Response: 89511
 Conc: 71.06 ng/ml



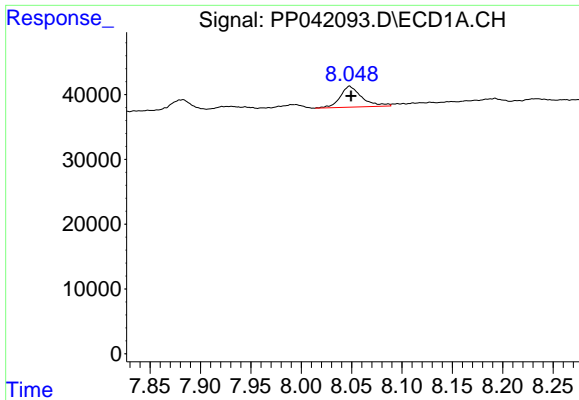
#28 AR-1254-3

R.T.: 7.753 min
 Delta R.T.: -0.002 min
 Response: 57913
 Conc: 74.12 ng/ml



#28 AR-1254-3

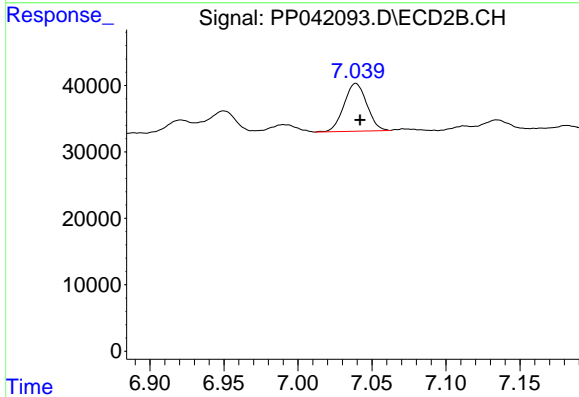
R.T.: 6.800 min
 Delta R.T.: -0.003 min
 Response: 118671
 Conc: 60.71 ng/ml



#29 AR-1254-4

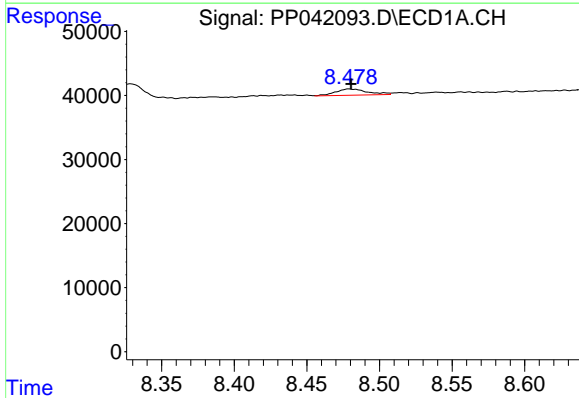
R.T.: 8.048 min
 Delta R.T.: -0.002 min
 Response: 48397
 Conc: 84.56 ng/ml

Instrument :
 ECD_P
 ClientSampleId :



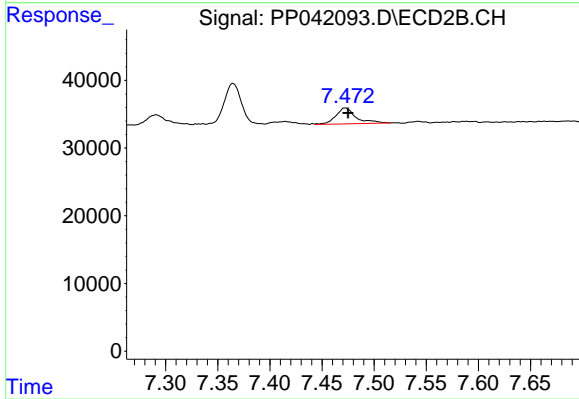
#29 AR-1254-4

R.T.: 7.039 min
 Delta R.T.: -0.003 min
 Response: 77597
 Conc: 66.30 ng/ml



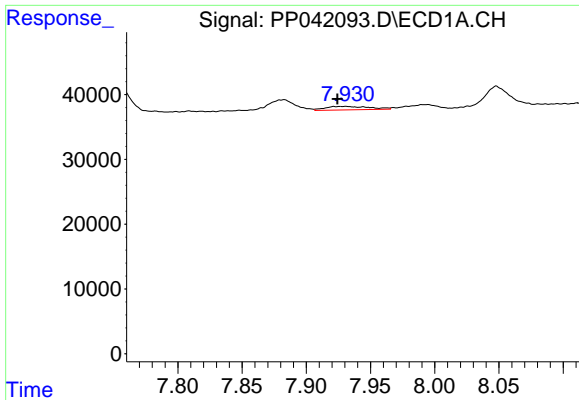
#30 AR-1254-5

R.T.: 8.479 min
 Delta R.T.: -0.001 min
 Response: 15085
 Conc: 23.95 ng/ml



#30 AR-1254-5

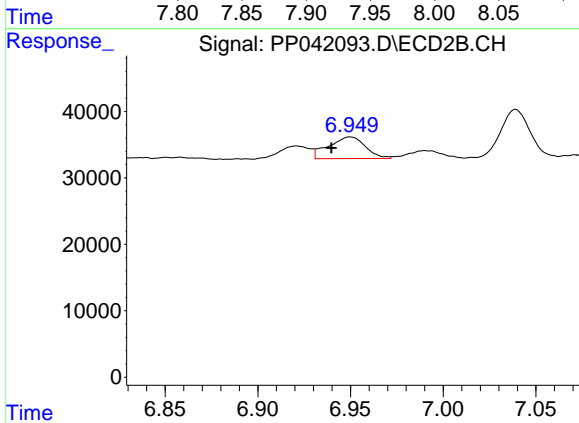
R.T.: 7.472 min
 Delta R.T.: -0.003 min
 Response: 31276
 Conc: 19.87 ng/ml



#31 AR-1260-1

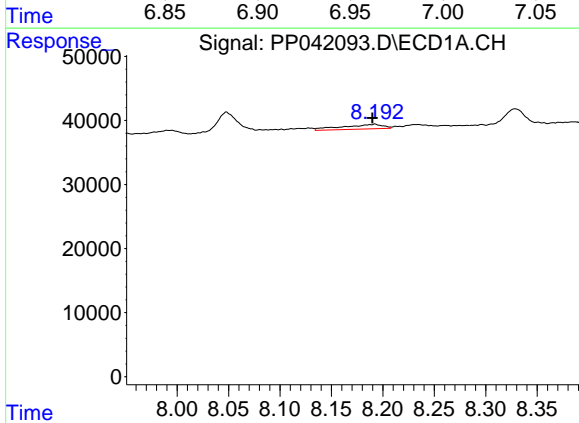
R.T.: 7.931 min
 Delta R.T.: 0.006 min
 Response: 13256
 Conc: 22.50 ng/ml

Instrument :
 ECD_P
 ClientSampleId :



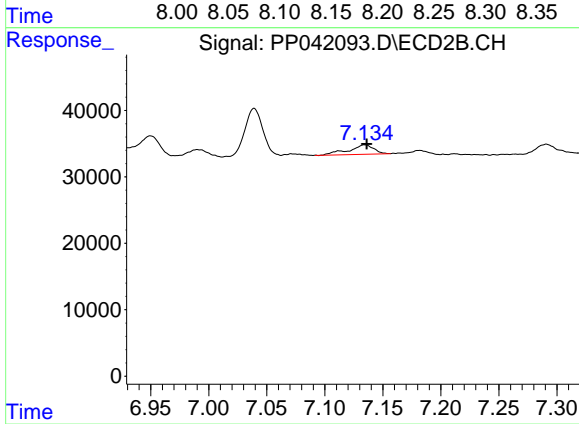
#31 AR-1260-1

R.T.: 6.950 min
 Delta R.T.: 0.010 min
 Response: 44941
 Conc: 35.01 ng/ml



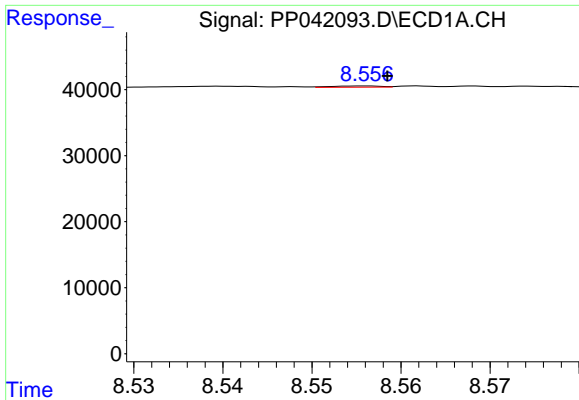
#32 AR-1260-2

R.T.: 8.192 min
 Delta R.T.: 0.002 min
 Response: 19702
 Conc: 28.95 ng/ml



#32 AR-1260-2

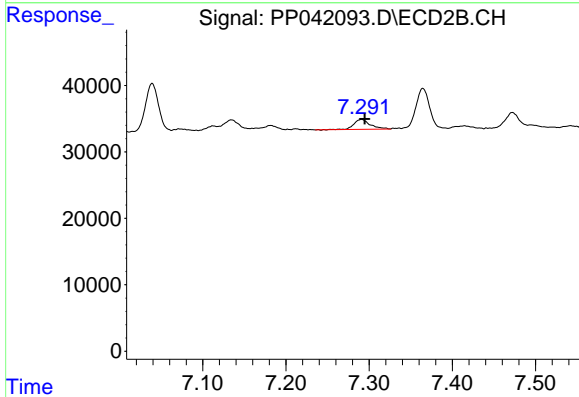
R.T.: 7.135 min
 Delta R.T.: -0.002 min
 Response: 21378
 Conc: 14.07 ng/ml



#33 AR-1260-3

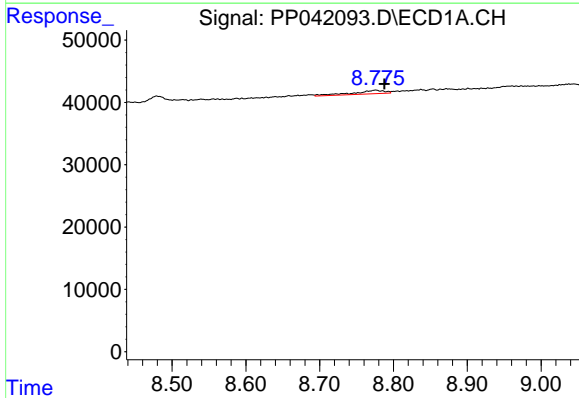
R.T.: 8.556 min
 Delta R.T.: -0.003 min
 Response: 706
 Conc: 1.28 ng/ml

Instrument :
 ECD_P
 ClientSampleId :



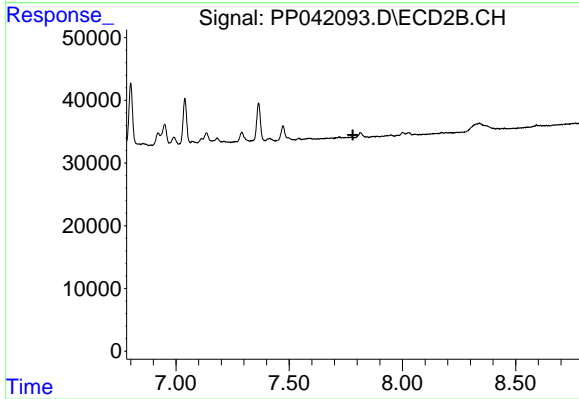
#33 AR-1260-3

R.T.: 7.291 min
 Delta R.T.: -0.004 min
 Response: 20415
 Conc: 14.67 ng/ml



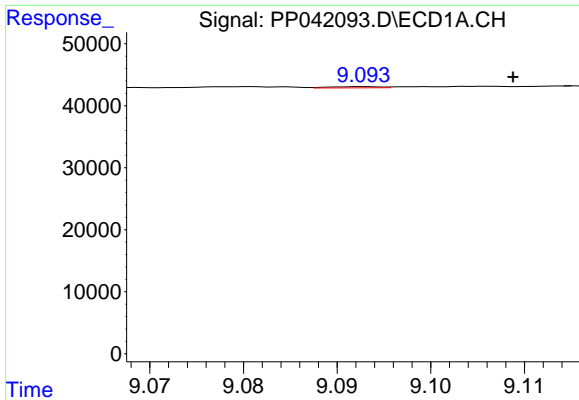
#34 AR-1260-4

R.T.: 8.776 min
 Delta R.T.: -0.011 min
 Response: 16578
 Conc: 26.26 ng/ml



#34 AR-1260-4

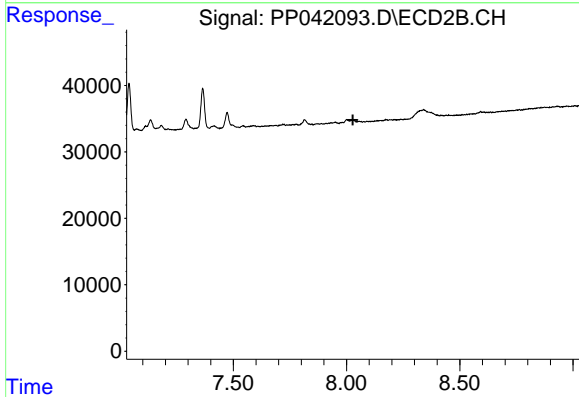
R.T.: 0.000 min
 Exp R.T. : 7.781 min
 Response: 0
 Conc: N.D.



#35 AR-1260-5

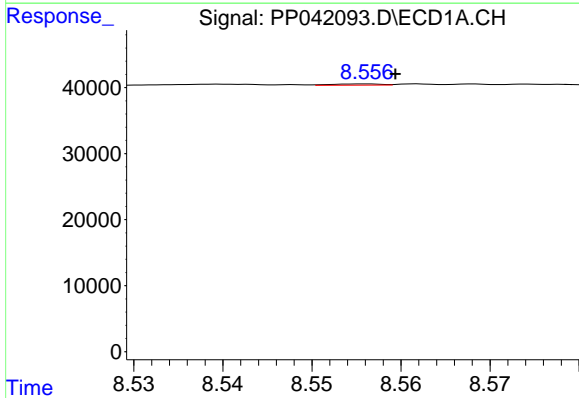
R.T.: 9.093 min
 Delta R.T.: -0.016 min
 Response: 714
 Conc: 0.59 ng/ml

Instrument :
 ECD_P
 ClientSampleId :



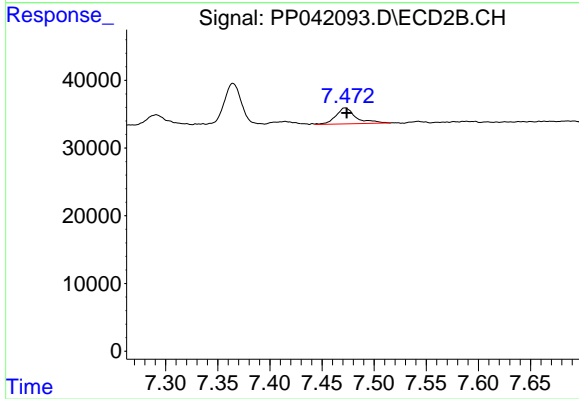
#35 AR-1260-5

R.T.: 0.000 min
 Exp R.T. : 8.028 min
 Response: 0
 Conc: N.D.



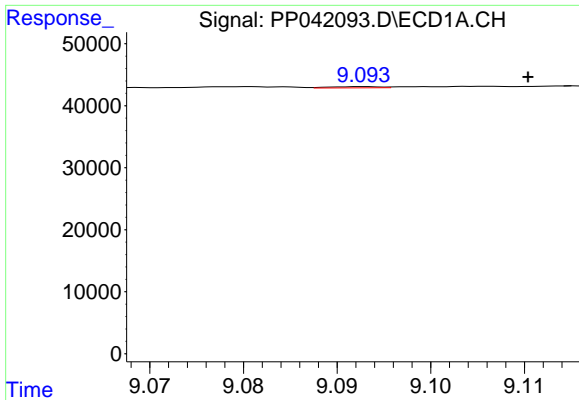
#36 AR-1262-1

R.T.: 8.556 min
 Delta R.T.: -0.004 min
 Response: 706
 Conc: 0.96 ng/ml



#36 AR-1262-1

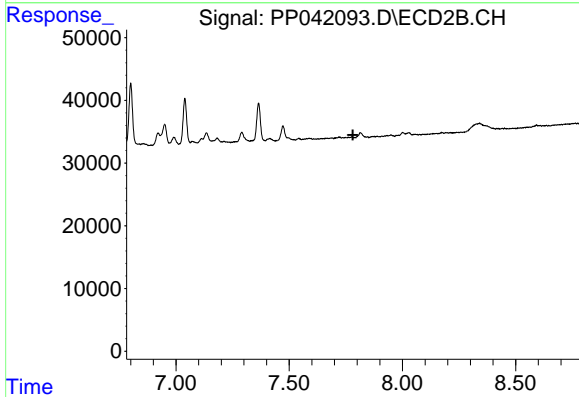
R.T.: 7.472 min
 Delta R.T.: -0.002 min
 Response: 31276
 Conc: 39.21 ng/ml



#37 AR-1262-2

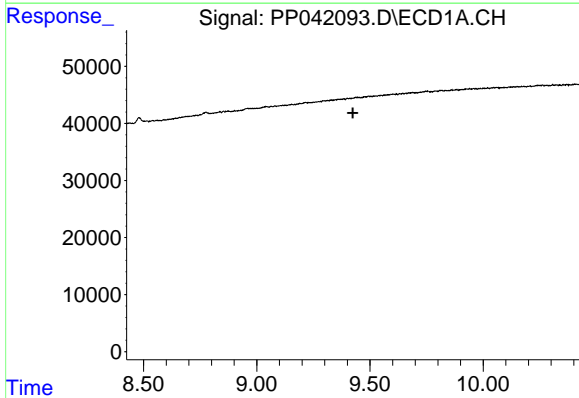
R.T.: 9.093 min
 Delta R.T.: -0.018 min
 Response: 714
 Conc: 0.57 ng/ml

Instrument :
 ECD_P
 ClientSampleId :



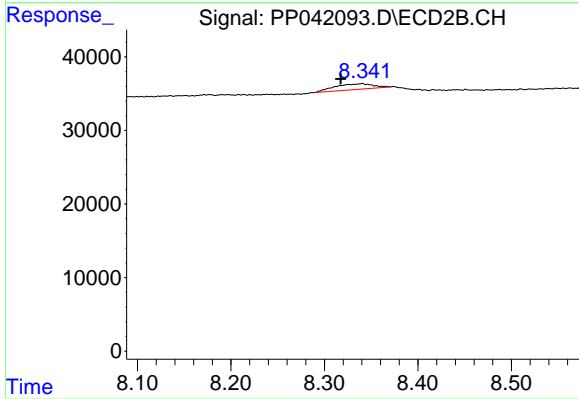
#37 AR-1262-2

R.T.: 0.000 min
 Exp R.T. : 7.781 min
 Response: 0
 Conc: N.D.



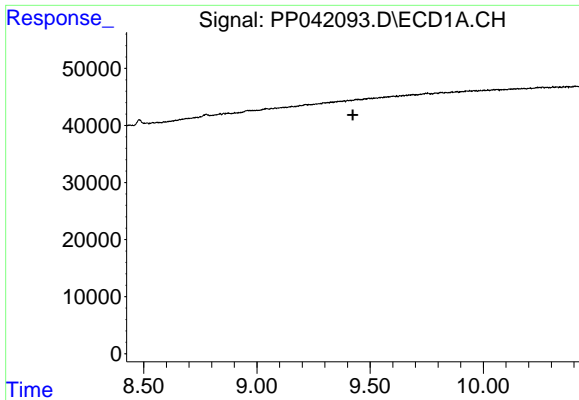
#38 AR-1262-3

R.T.: 0.000 min
 Exp R.T. : 9.424 min
 Response: 0
 Conc: N.D.



#38 AR-1262-3

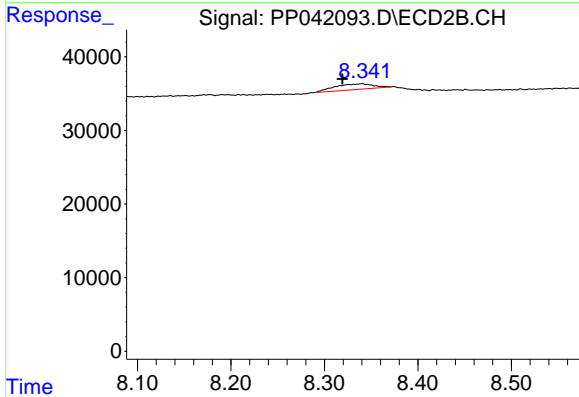
R.T.: 8.341 min
 Delta R.T.: 0.023 min
 Response: 21941
 Conc: 21.00 ng/ml



#41 AR-1268-1

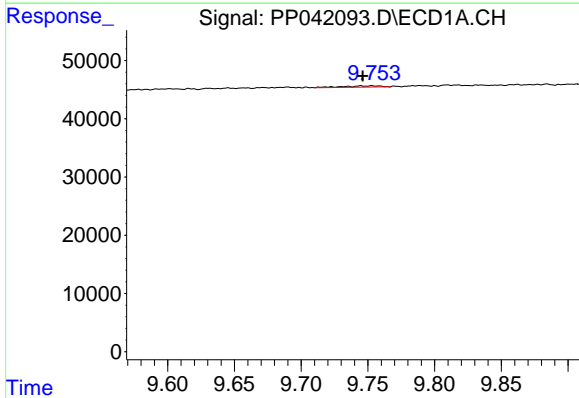
R.T.: 0.000 min
 Exp R.T.: 9.424 min
 Response: 0
 Conc: N.D.

Instrument :
 ECD_P
 ClientSampleId :



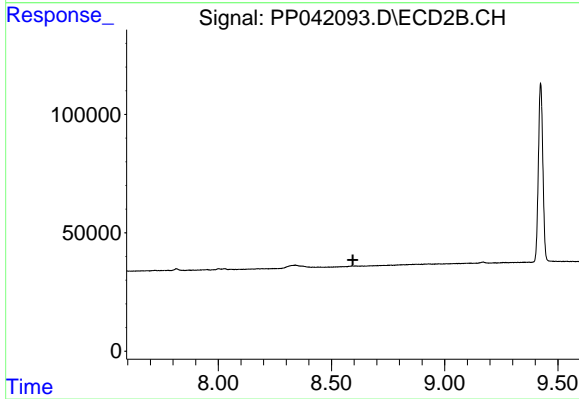
#41 AR-1268-1

R.T.: 8.341 min
 Delta R.T.: 0.022 min
 Response: 21941
 Conc: 8.07 ng/ml



#43 AR-1268-3

R.T.: 9.753 min
 Delta R.T.: 0.007 min
 Response: 4500
 Conc: 3.47 ng/ml



#43 AR-1268-3

R.T.: 0.000 min
 Exp R.T.: 8.595 min
 Response: 0
 Conc: N.D.