

Data Path : Z:\pestpcbsrv\HPCHEM1\ECD\_P\Data\PP121922\  
 Data File : PP053818.D  
 Signal(s) : Signal #1: ECD1A.ch Signal #2: ECD2B.ch  
 Acq On : 19 Dec 2022 09:40  
 Operator : YP\AJ  
 Sample : AR1660CCC500  
 Misc :  
 ALS Vial : 3 Sample Multiplier: 1

Instrument :  
 ECD\_P  
 ClientSampleId :

Integration File signal 1: autoint1.e  
 Integration File signal 2: autoint2.e  
 Quant Time: Dec 19 11:30:37 2022  
 Quant Method : Z:\pestpcbsrv\HPCHEM1\ECD\_P\methods\PP121322.M  
 Quant Title : GC EXTRACTABLES  
 QLast Update : Wed Dec 14 05:38:40 2022  
 Response via : Initial Calibration  
 Integrator: ChemStation

Volume Inj. : 2 µl  
 Signal #1 Phase : ZB-MR1 Signal #2 Phase: ZB-MR2  
 Signal #1 Info : 30Mx0.32mmx 0.50µ Signal #2 Info : 30M x 0.32mm x 0.25µm

Compound	RT#1	RT#2	Resp#1	Resp#2	ng/ml	ng/ml
-----						
System Monitoring Compounds						
1) SA Tetrachlo...	4.339	3.592	105.6E6	71796295	50.300	45.972
2) SA Decachlor...	10.103	8.630	81776280	69219008	48.167	49.557
Target Compounds						
3) L1 AR-1016-1	5.512	4.682	35544038	23589967	524.177	513.646
4) L1 AR-1016-2	5.534	4.702	51006294	32140902	512.057	512.958
5) L1 AR-1016-3	5.597	4.879	32077682	17418948	507.550	513.208
6) L1 AR-1016-4	5.695	4.921	25982537	14704971	524.344	493.479
7) L1 AR-1016-5	5.992	5.135	26798678	18253483	509.134	503.384
8) L2 AR-1221-1	4.544	3.806	3614538	2526506	140.305	130.486
9) L2 AR-1221-2	4.635	3.892	5200183	3667583	267.103	250.906
10) L2 AR-1221-3	4.712	3.969	19376336	14152856	333.409	318.178
11) L3 AR-1232-1	4.712	3.969	19376336	14152856	432.614	411.284
12) L3 AR-1232-2	5.243	4.702	26829627	32140902	1043.000	1076.883
13) L3 AR-1232-3	5.534	4.879	51006294	17418948	1086.699	1099.434
14) L3 AR-1232-4	5.695	4.963	25982537	17911528	1096.584	1159.125
15) L3 AR-1232-5	5.787	5.135	21498402	18253483	1165.692	1108.489
16) L4 AR-1242-1	5.512	4.682	35544038	23589967	678.570	666.129
17) L4 AR-1242-2	5.534	4.702	51006294	32140902	669.449	669.014
18) L4 AR-1242-3	5.597	4.879	32077682	17418948	654.715	668.139
19) L4 AR-1242-4	5.695	4.963	25982537	17911528	676.826	627.843
20) L4 AR-1242-5	6.436	5.489	4060976	14237222	99.568	466.439 #
21) L5 AR-1248-1	5.512	4.682	35544038	23589967	843.360	829.248
22) L5 AR-1248-2	5.787	4.921	21498402	14704971	340.163	355.461
23) L5 AR-1248-3	5.992	4.963	26798678	17911528	382.593	426.490
24) L5 AR-1248-4	6.397	5.135	4230011	18253483	59.978	379.378 #
25) L5 AR-1248-5	6.436	5.530	4060976	2079877	57.630	55.391
26) L6 AR-1254-1	6.370	5.489	20796118	14237222	268.363	217.417
27) L6 AR-1254-2	6.590	5.638	22190233	13489174	190.725	231.297
28) L6 AR-1254-3	6.958	6.059	12009445	23822607	102.533	270.798 #
29) L6 AR-1254-4	7.244	6.273	7837732	2410801	98.864	52.620 #
30) L6 AR-1254-5	7.665	6.693	68037763	47296150	697.645	606.876
31) L7 AR-1260-1	7.123	6.175	48339774	33730754	500.551	517.112
32) L7 AR-1260-2	7.381	6.363	56285757	40707252	509.506	540.565
33) L7 AR-1260-3	7.742	6.518	37598674	38406491	497.274	529.860
34) L7 AR-1260-4	7.968	6.993	46090299	29405904	491.081	541.960
35) L7 AR-1260-5	8.286	7.235	81361860	68876268	513.097	575.960
36) L8 AR-1262-1	7.742	6.786	37598674	16145483	314.091	452.690 #
37) L8 AR-1262-2	8.286	6.993	81361860	29405904	424.302	378.299
38) L8 AR-1262-3	8.609	7.521	54908168	14339107	396.259	227.590 #
39) L8 AR-1262-4	8.685	7.584	13431685	51665025	215.819	451.864 #
40) L8 AR-1262-5	9.345	8.081	21429416	16650495	303.256	334.239
41) L9 AR-1268-1	8.609	7.521	54908168	14339107	224.989	79.256 #

Data Path : Z:\pestpcbsrv\HPCHEM1\ECD\_P\Data\PP121922\  
 Data File : PP053818.D  
 Signal(s) : Signal #1: ECD1A.ch Signal #2: ECD2B.ch  
 Acq On : 19 Dec 2022 09:40  
 Operator : YP\AJ  
 Sample : AR1660CCC500  
 Misc :  
 ALS Vial : 3 Sample Multiplier: 1

Instrument :  
 ECD\_P  
 ClientSampleId :

Integration File signal 1: autoint1.e  
 Integration File signal 2: autoint2.e  
 Quant Time: Dec 19 11:30:37 2022  
 Quant Method : Z:\pestpcbsrv\HPCHEM1\ECD\_P\methods\PP121322.M  
 Quant Title : GC EXTRACTABLES  
 QLast Update : Wed Dec 14 05:38:40 2022  
 Response via : Initial Calibration  
 Integrator: ChemStation

Volume Inj. : 2 µl  
 Signal #1 Phase : ZB-MR1 Signal #2 Phase: ZB-MR2  
 Signal #1 Info : 30Mx0.32mmx 0.50µ Signal #2 Info : 30M x 0.32mm x 0.25µm

	Compound	RT#1	RT#2	Resp#1	Resp#2	ng/ml	ng/ml
42)	L9 AR-1268-2	8.685	7.584	13431685	51665025	59.101	302.760 #
43)	L9 AR-1268-3	8.918	7.795	1727766	1174523	9.016	7.952
44)	L9 AR-1268-4	9.345	8.081	21429416	16650495	278.386	298.765
45)	L9 AR-1268-5	9.764	8.372	7728874	5854720	13.143	12.384

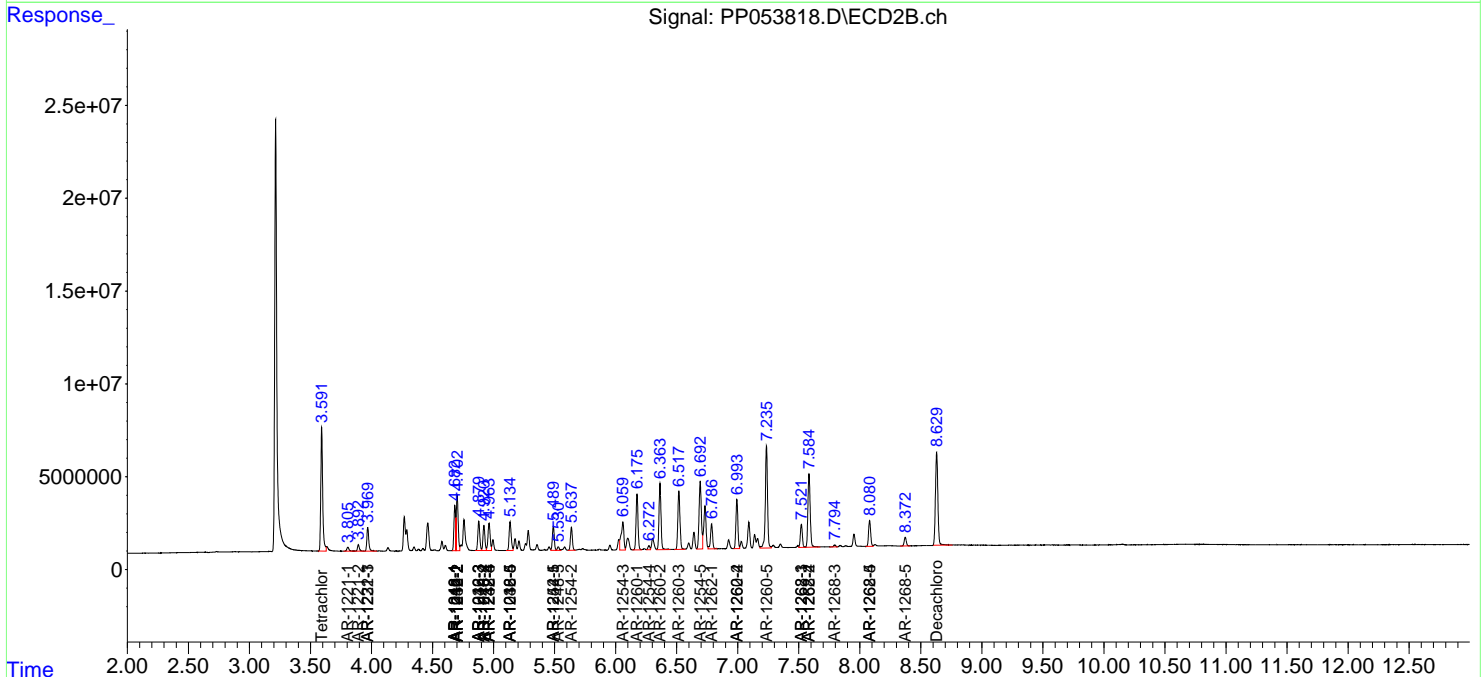
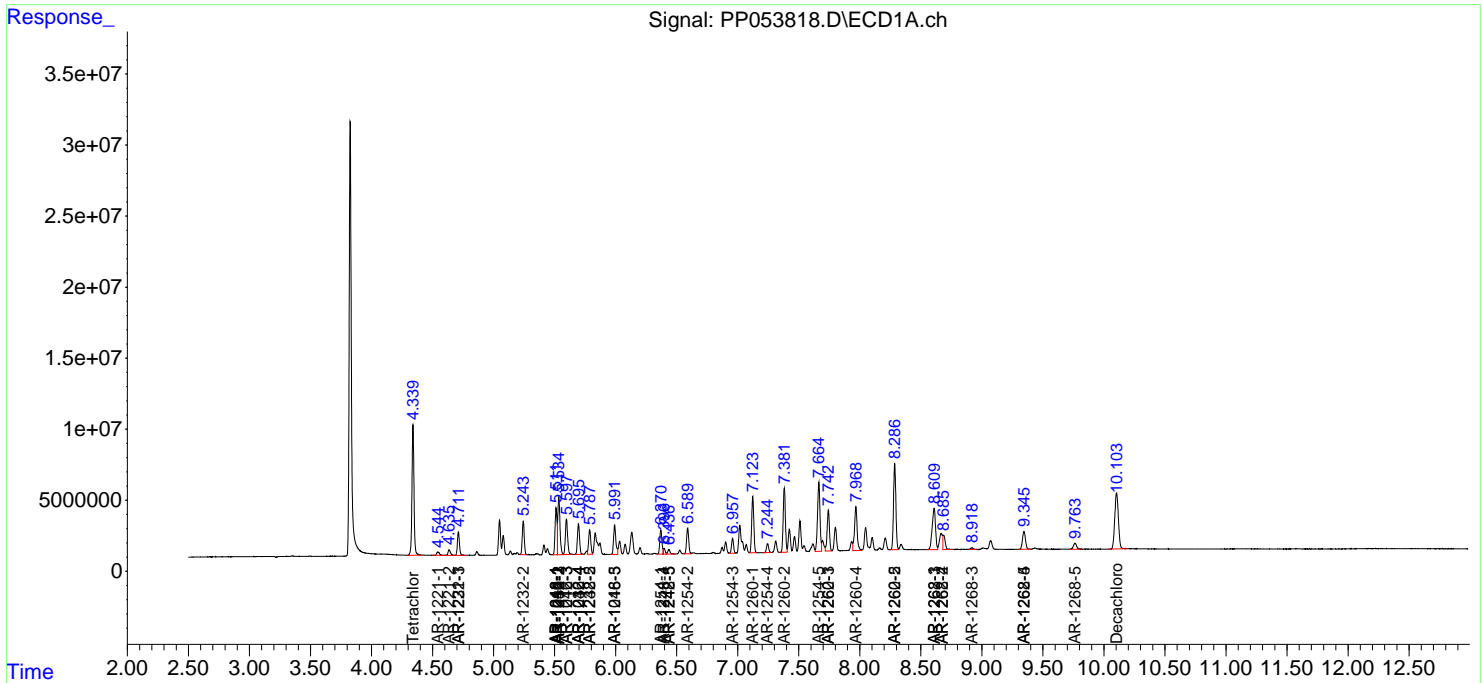
(f)=RT Delta > 1/2 Window (#)=Amounts differ by > 25% (m)=manual int.

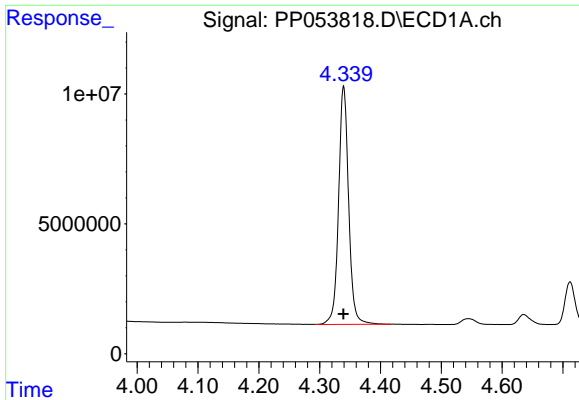
Data Path : Z:\pestpcbsrv\HPCHEM1\ECD\_P\Data\PP121922\  
 Data File : PP053818.D  
 Signal(s) : Signal #1: ECD1A.ch Signal #2: ECD2B.ch  
 Acq On : 19 Dec 2022 09:40  
 Operator : YP\AJ  
 Sample : AR1660CCC500  
 Misc :  
 ALS Vial : 3 Sample Multiplier: 1

Instrument :  
 ECD\_P  
 ClientSampleId :

Integration File signal 1: autoint1.e  
 Integration File signal 2: autoint2.e  
 Quant Time: Dec 19 11:30:37 2022  
 Quant Method : Z:\pestpcbsrv\HPCHEM1\ECD\_P\methods\PP121322.M  
 Quant Title : GC EXTRACTABLES  
 QLast Update : Wed Dec 14 05:38:40 2022  
 Response via : Initial Calibration  
 Integrator: ChemStation

Volume Inj. : 2 µl  
 Signal #1 Phase : ZB-MR1 Signal #2 Phase: ZB-MR2  
 Signal #1 Info : 30Mx0.32mmx 0.50µ Signal #2 Info : 30M x 0.32mm x 0.25µm

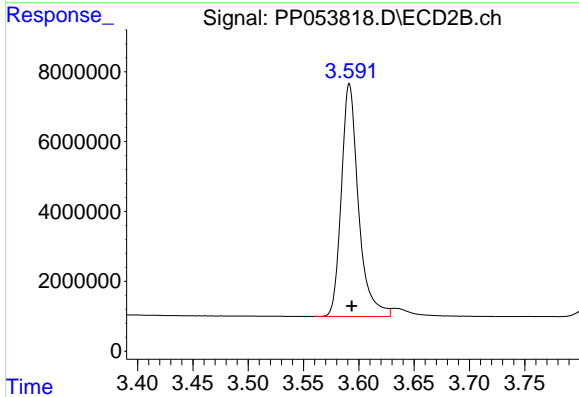




#1 Tetrachloro-m-xylene

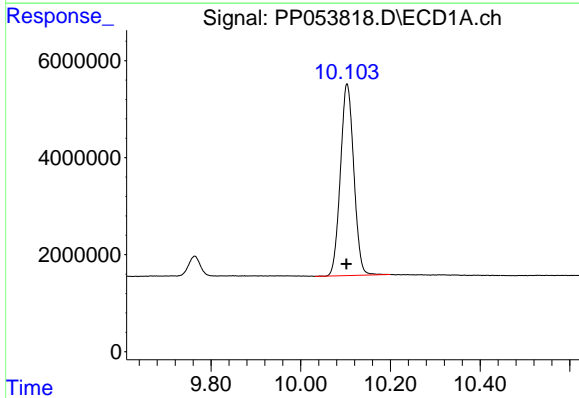
R.T.: 4.339 min  
 Delta R.T.: 0.000 min  
 Response: 105619091  
 Conc: 50.30 ng/ml

Instrument :  
 ECD\_P  
 ClientSampleId :



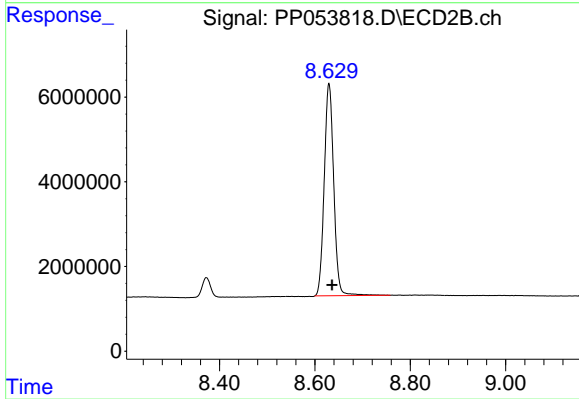
#1 Tetrachloro-m-xylene

R.T.: 3.592 min  
 Delta R.T.: -0.002 min  
 Response: 71796295  
 Conc: 45.97 ng/ml



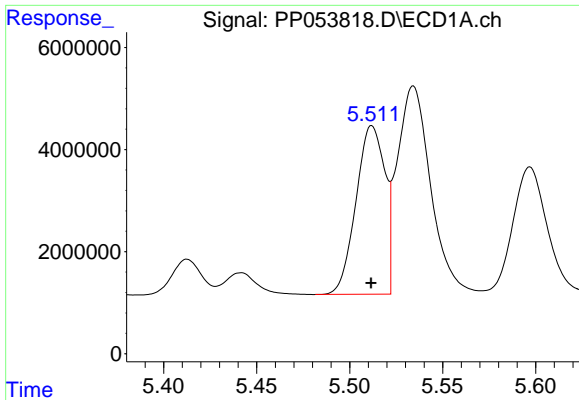
#2 Decachlorobiphenyl

R.T.: 10.103 min  
 Delta R.T.: 0.001 min  
 Response: 81776280  
 Conc: 48.17 ng/ml



#2 Decachlorobiphenyl

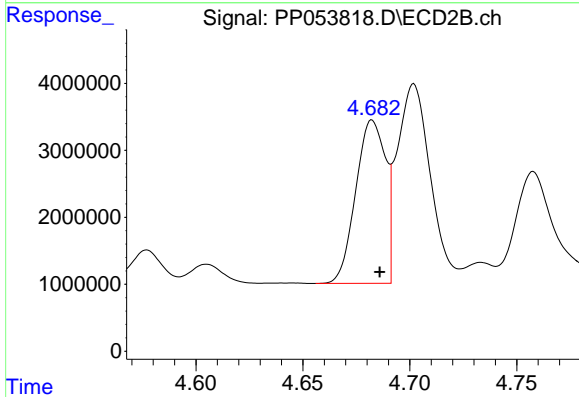
R.T.: 8.630 min  
 Delta R.T.: -0.006 min  
 Response: 69219008  
 Conc: 49.56 ng/ml



#3 AR-1016-1

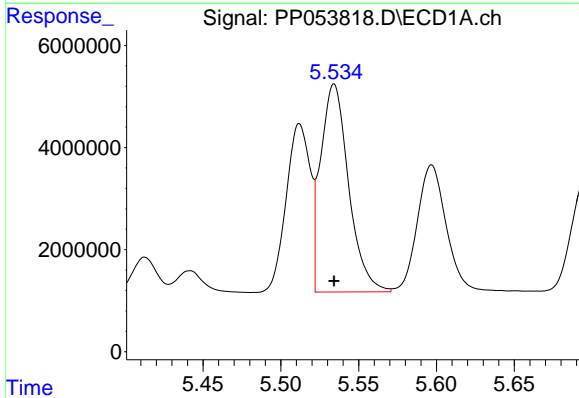
R.T.: 5.512 min  
 Delta R.T.: 0.000 min  
 Response: 35544038  
 Conc: 524.18 ng/ml

Instrument :  
 ECD\_P  
 ClientSampleId :



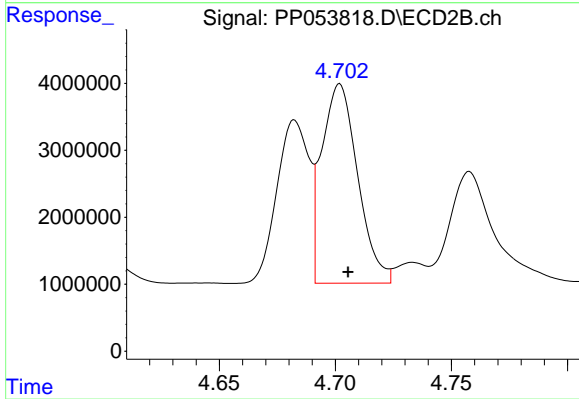
#3 AR-1016-1

R.T.: 4.682 min  
 Delta R.T.: -0.003 min  
 Response: 23589967  
 Conc: 513.65 ng/ml



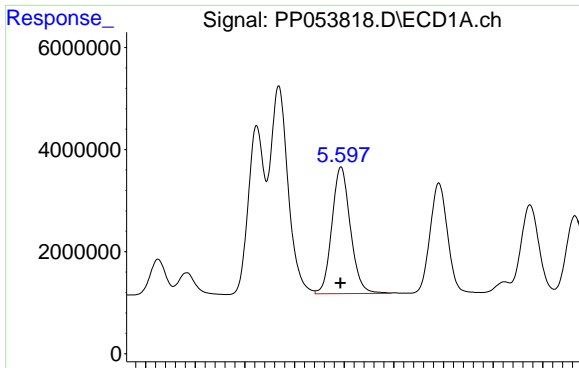
#4 AR-1016-2

R.T.: 5.534 min  
 Delta R.T.: 0.000 min  
 Response: 51006294  
 Conc: 512.06 ng/ml



#4 AR-1016-2

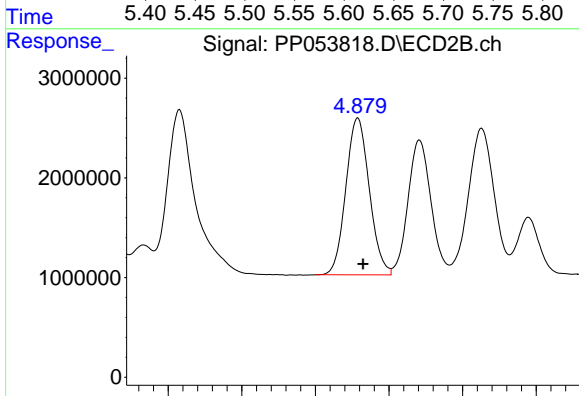
R.T.: 4.702 min  
 Delta R.T.: -0.004 min  
 Response: 32140902  
 Conc: 512.96 ng/ml



#5 AR-1016-3

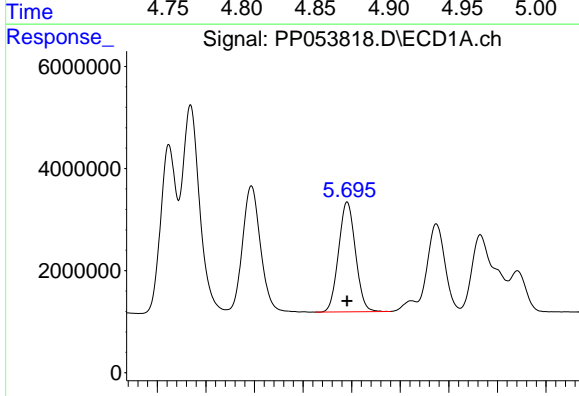
R.T.: 5.597 min  
 Delta R.T.: 0.000 min  
 Response: 32077682  
 Conc: 507.55 ng/ml

Instrument :  
 ECD\_P  
 ClientSampleId :



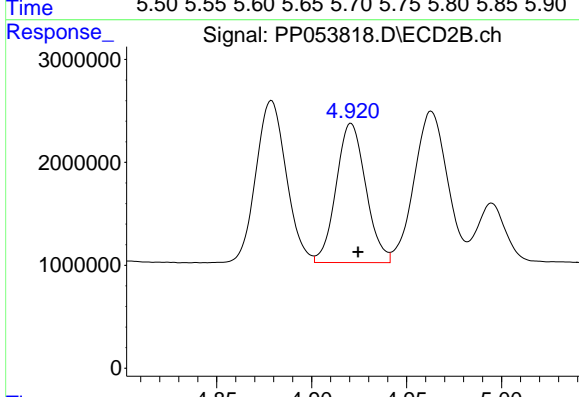
#5 AR-1016-3

R.T.: 4.879 min  
 Delta R.T.: -0.003 min  
 Response: 17418948  
 Conc: 513.21 ng/ml



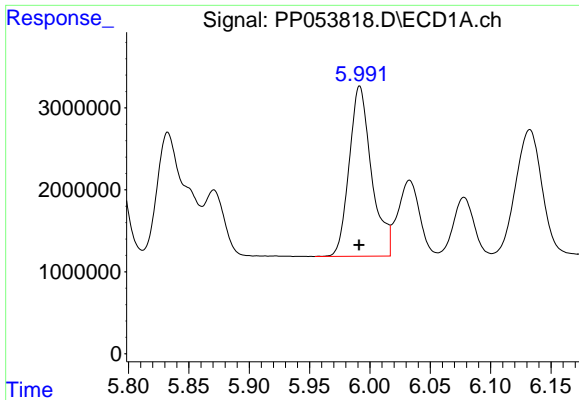
#6 AR-1016-4

R.T.: 5.695 min  
 Delta R.T.: 0.000 min  
 Response: 25982537  
 Conc: 524.34 ng/ml



#6 AR-1016-4

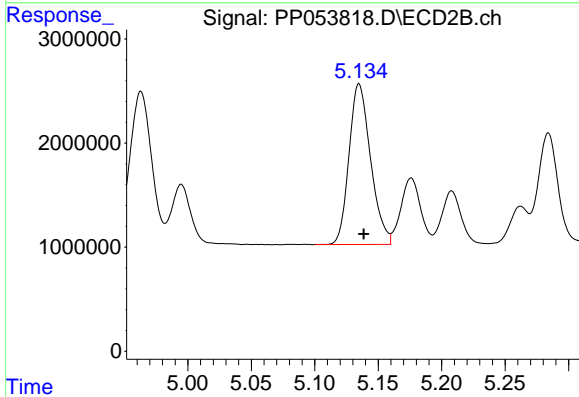
R.T.: 4.921 min  
 Delta R.T.: -0.004 min  
 Response: 14704971  
 Conc: 493.48 ng/ml



#7 AR-1016-5

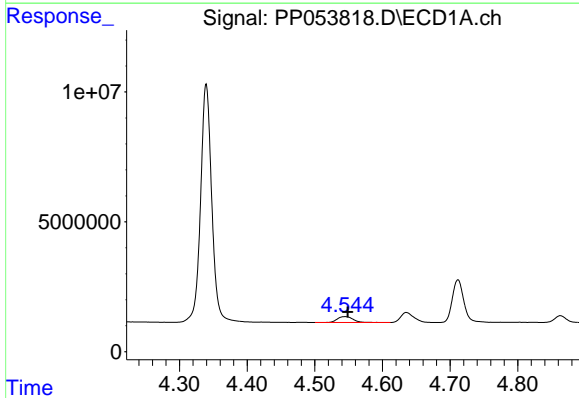
R.T.: 5.992 min  
 Delta R.T.: 0.000 min  
 Response: 26798678  
 Conc: 509.13 ng/ml

Instrument :  
 ECD\_P  
 ClientSampleId :



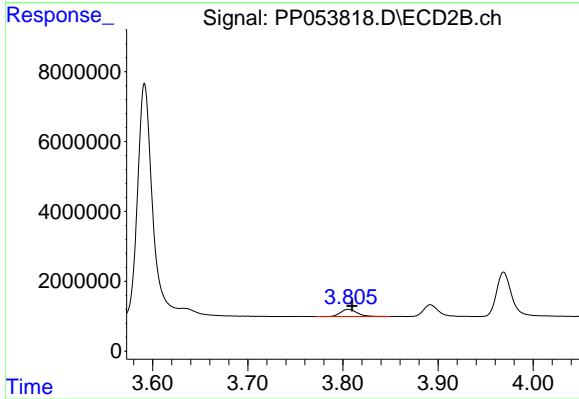
#7 AR-1016-5

R.T.: 5.135 min  
 Delta R.T.: -0.004 min  
 Response: 18253483  
 Conc: 503.38 ng/ml



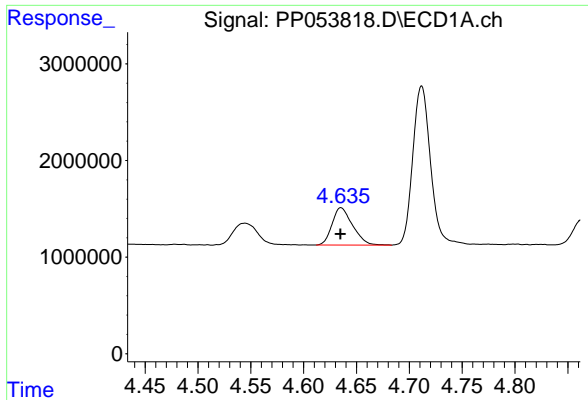
#8 AR-1221-1

R.T.: 4.544 min  
 Delta R.T.: -0.005 min  
 Response: 3614538  
 Conc: 140.31 ng/ml



#8 AR-1221-1

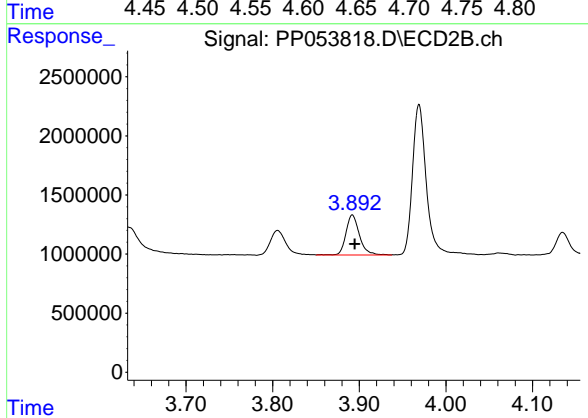
R.T.: 3.806 min  
 Delta R.T.: -0.004 min  
 Response: 2526506  
 Conc: 130.49 ng/ml



#9 AR-1221-2

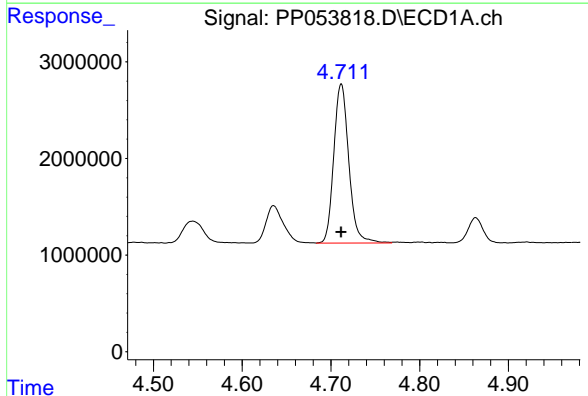
R.T.: 4.635 min  
 Delta R.T.: 0.000 min  
 Response: 5200183  
 Conc: 267.10 ng/ml

Instrument :  
 ECD\_P  
 ClientSampleId :



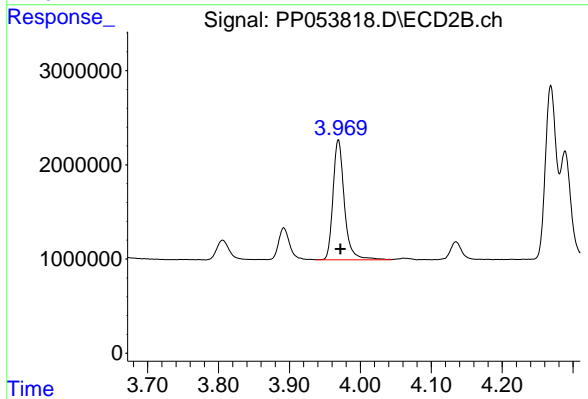
#9 AR-1221-2

R.T.: 3.892 min  
 Delta R.T.: -0.003 min  
 Response: 3667583  
 Conc: 250.91 ng/ml



#10 AR-1221-3

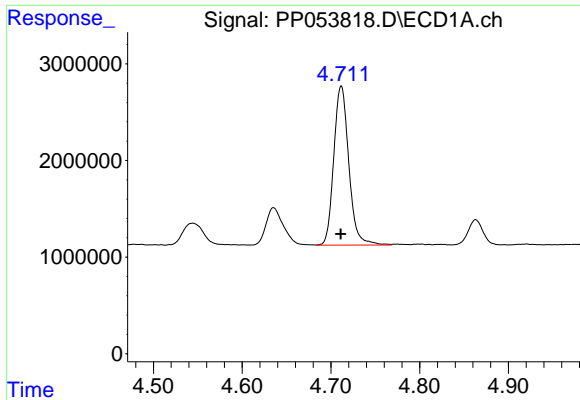
R.T.: 4.712 min  
 Delta R.T.: 0.000 min  
 Response: 19376336  
 Conc: 333.41 ng/ml



#10 AR-1221-3

R.T.: 3.969 min  
 Delta R.T.: -0.003 min  
 Response: 14152856  
 Conc: 318.18 ng/ml

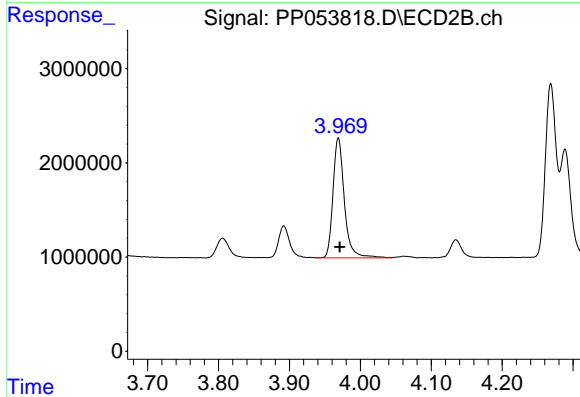




#11 AR-1232-1

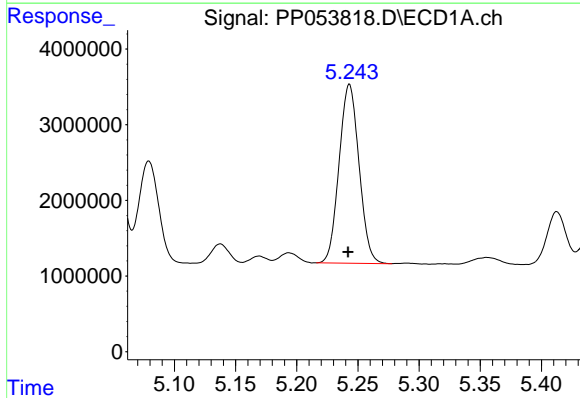
R.T.: 4.712 min  
 Delta R.T.: 0.000 min  
 Response: 19376336  
 Conc: 432.61 ng/ml

Instrument :  
 ECD\_P  
 ClientSampleId :



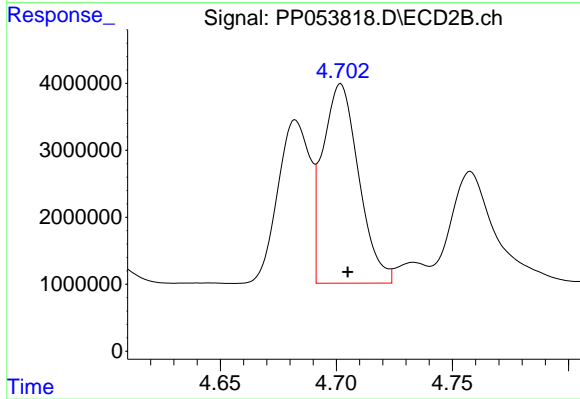
#11 AR-1232-1

R.T.: 3.969 min  
 Delta R.T.: -0.002 min  
 Response: 14152856  
 Conc: 411.28 ng/ml



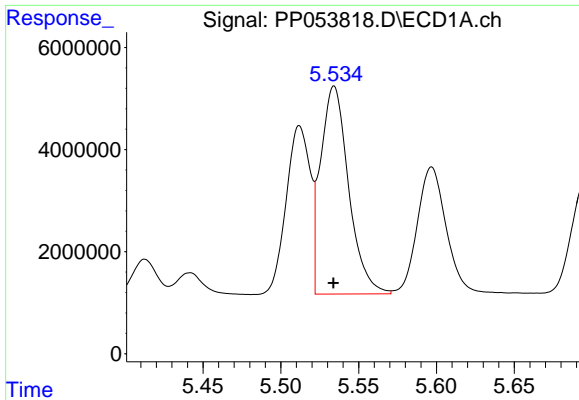
#12 AR-1232-2

R.T.: 5.243 min  
 Delta R.T.: 0.001 min  
 Response: 26829627  
 Conc: 1043.00 ng/ml



#12 AR-1232-2

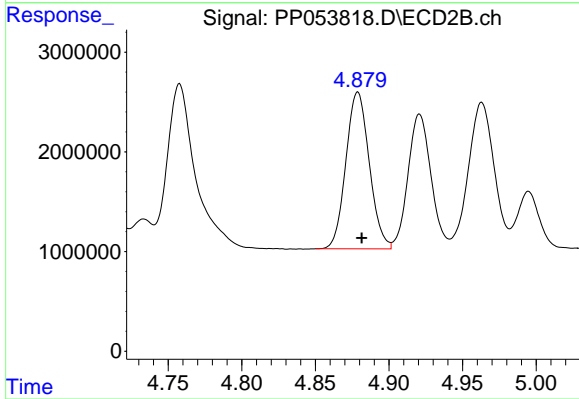
R.T.: 4.702 min  
 Delta R.T.: -0.003 min  
 Response: 32140902  
 Conc: 1076.88 ng/ml



#13 AR-1232-3

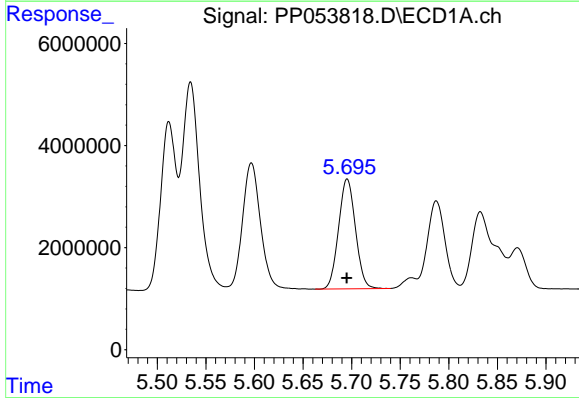
R.T.: 5.534 min  
 Delta R.T.: 0.000 min  
 Response: 51006294  
 Conc: 1086.70 ng/ml

Instrument :  
 ECD\_P  
 ClientSampleId :



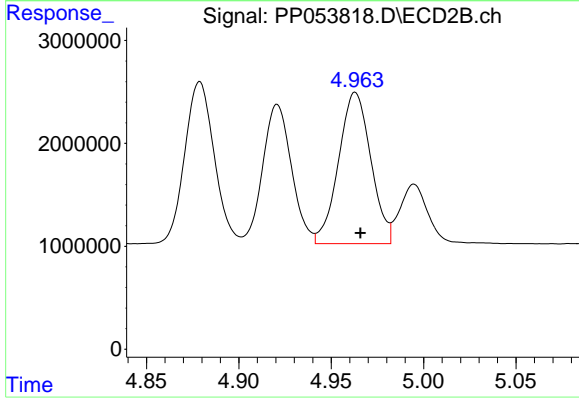
#13 AR-1232-3

R.T.: 4.879 min  
 Delta R.T.: -0.003 min  
 Response: 17418948  
 Conc: 1099.43 ng/ml



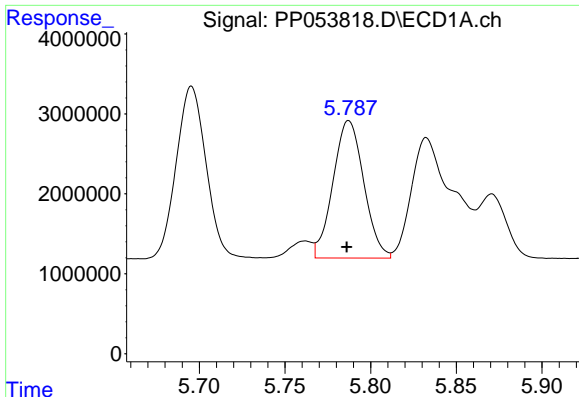
#14 AR-1232-4

R.T.: 5.695 min  
 Delta R.T.: 0.000 min  
 Response: 25982537  
 Conc: 1096.58 ng/ml



#14 AR-1232-4

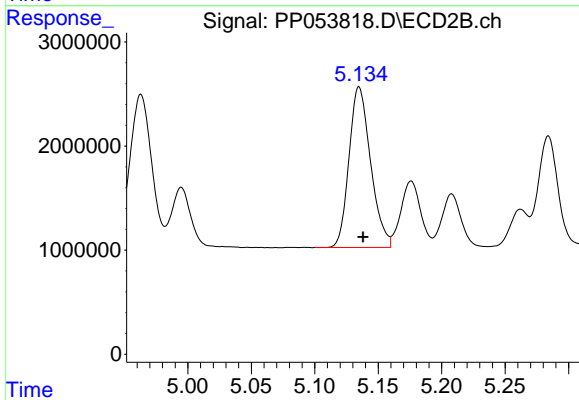
R.T.: 4.963 min  
 Delta R.T.: -0.003 min  
 Response: 17911528  
 Conc: 1159.13 ng/ml



#15 AR-1232-5

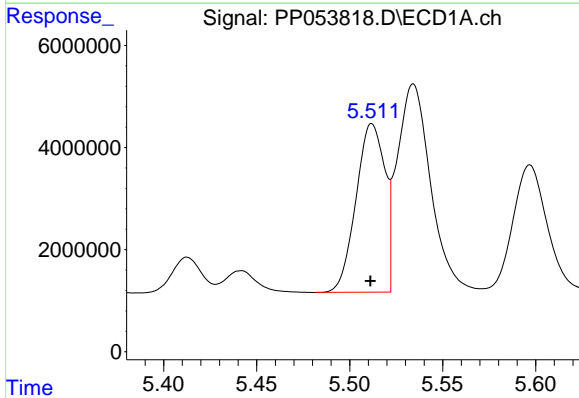
R.T.: 5.787 min  
 Delta R.T.: 0.001 min  
 Response: 21498402  
 Conc: 1165.69 ng/ml

Instrument :  
 ECD\_P  
 ClientSampleId :



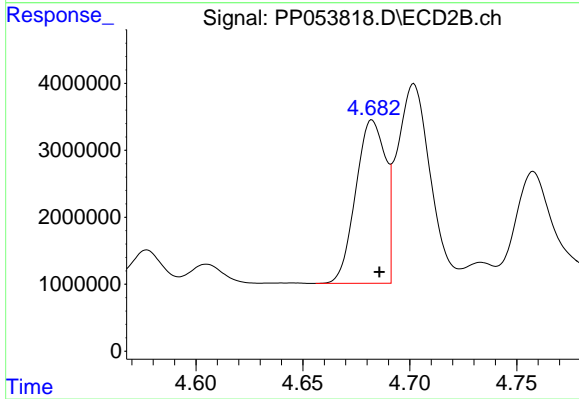
#15 AR-1232-5

R.T.: 5.135 min  
 Delta R.T.: -0.003 min  
 Response: 18253483  
 Conc: 1108.49 ng/ml



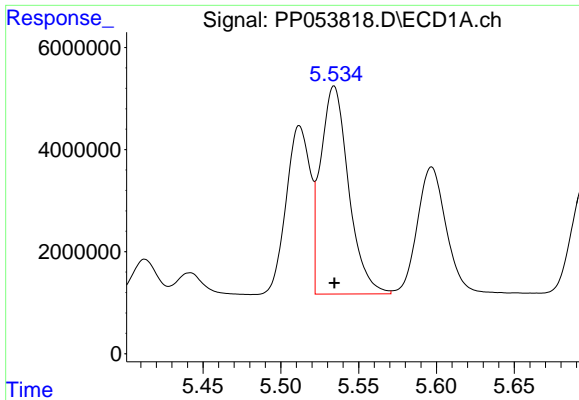
#16 AR-1242-1

R.T.: 5.512 min  
 Delta R.T.: 0.000 min  
 Response: 35544038  
 Conc: 678.57 ng/ml



#16 AR-1242-1

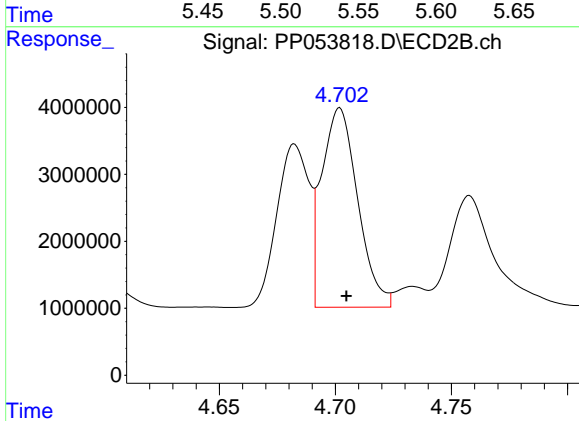
R.T.: 4.682 min  
 Delta R.T.: -0.003 min  
 Response: 23589967  
 Conc: 666.13 ng/ml



#17 AR-1242-2

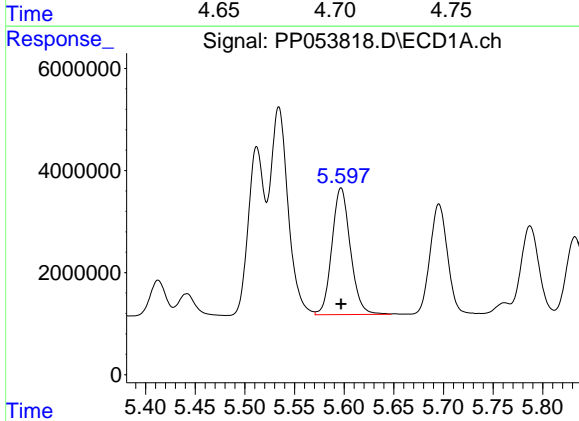
R.T.: 5.534 min  
 Delta R.T.: 0.000 min  
 Response: 51006294  
 Conc: 669.45 ng/ml

Instrument :  
 ECD\_P  
 ClientSampleId :



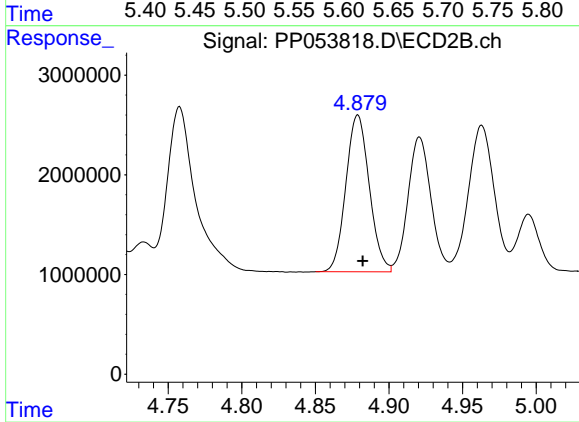
#17 AR-1242-2

R.T.: 4.702 min  
 Delta R.T.: -0.003 min  
 Response: 32140902  
 Conc: 669.01 ng/ml



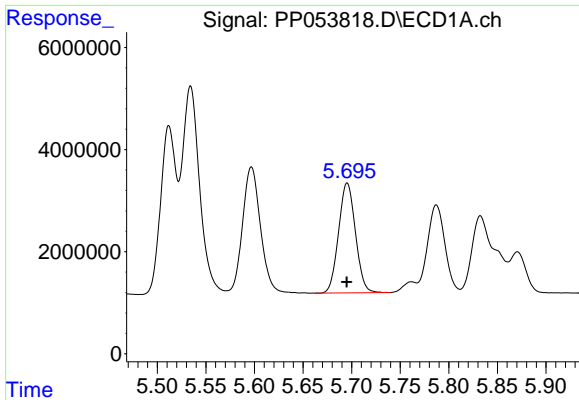
#18 AR-1242-3

R.T.: 5.597 min  
 Delta R.T.: 0.000 min  
 Response: 32077682  
 Conc: 654.71 ng/ml



#18 AR-1242-3

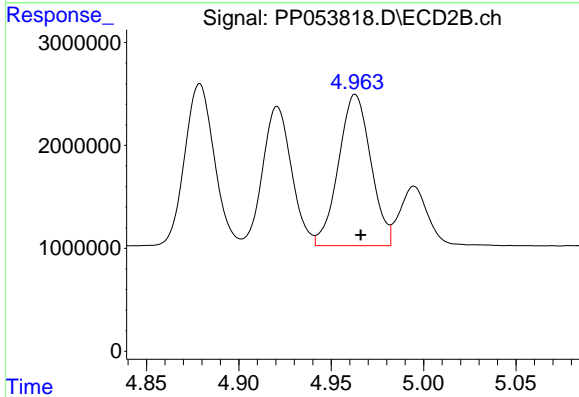
R.T.: 4.879 min  
 Delta R.T.: -0.003 min  
 Response: 17418948  
 Conc: 668.14 ng/ml



#19 AR-1242-4

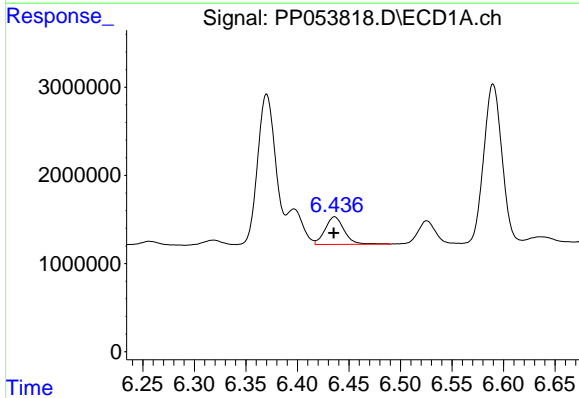
R.T.: 5.695 min  
 Delta R.T.: 0.000 min  
 Response: 25982537  
 Conc: 676.83 ng/ml

Instrument :  
 ECD\_P  
 ClientSampleId :



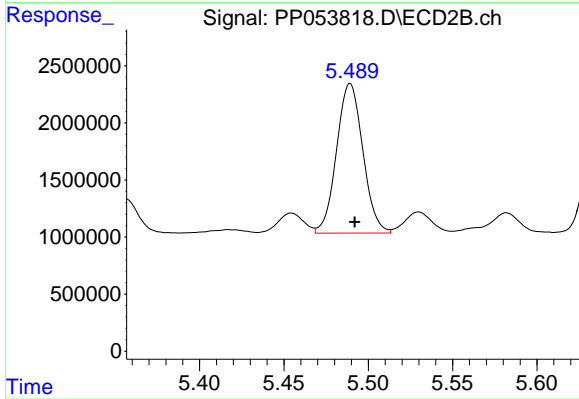
#19 AR-1242-4

R.T.: 4.963 min  
 Delta R.T.: -0.003 min  
 Response: 17911528  
 Conc: 627.84 ng/ml



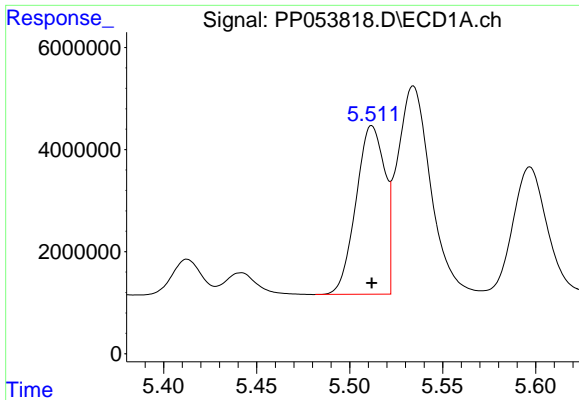
#20 AR-1242-5

R.T.: 6.436 min  
 Delta R.T.: 0.000 min  
 Response: 4060976  
 Conc: 99.57 ng/ml



#20 AR-1242-5

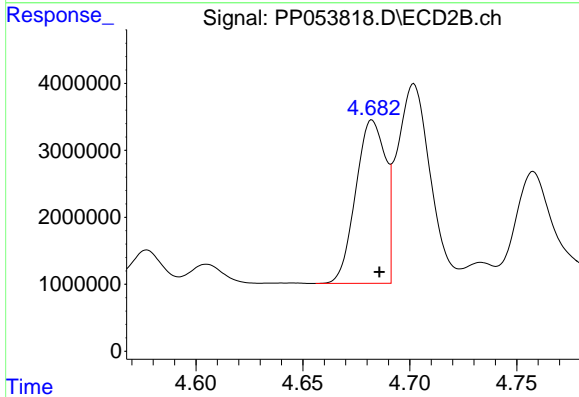
R.T.: 5.489 min  
 Delta R.T.: -0.003 min  
 Response: 14237222  
 Conc: 466.44 ng/ml



#21 AR-1248-1

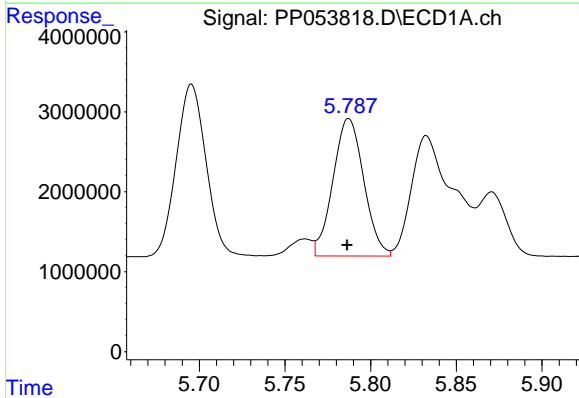
R.T.: 5.512 min  
 Delta R.T.: 0.000 min  
 Response: 35544038  
 Conc: 843.36 ng/ml

Instrument :  
 ECD\_P  
 ClientSampleId :



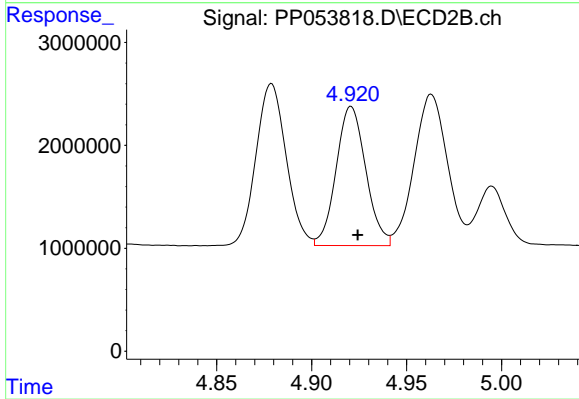
#21 AR-1248-1

R.T.: 4.682 min  
 Delta R.T.: -0.003 min  
 Response: 23589967  
 Conc: 829.25 ng/ml



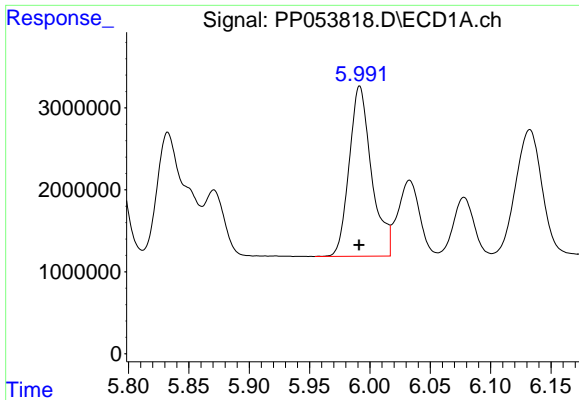
#22 AR-1248-2

R.T.: 5.787 min  
 Delta R.T.: 0.001 min  
 Response: 21498402  
 Conc: 340.16 ng/ml



#22 AR-1248-2

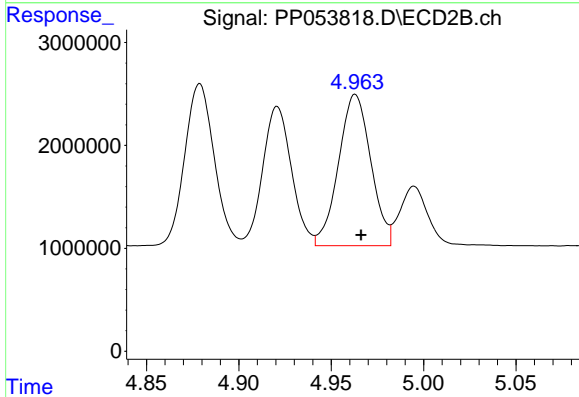
R.T.: 4.921 min  
 Delta R.T.: -0.004 min  
 Response: 14704971  
 Conc: 355.46 ng/ml



#23 AR-1248-3

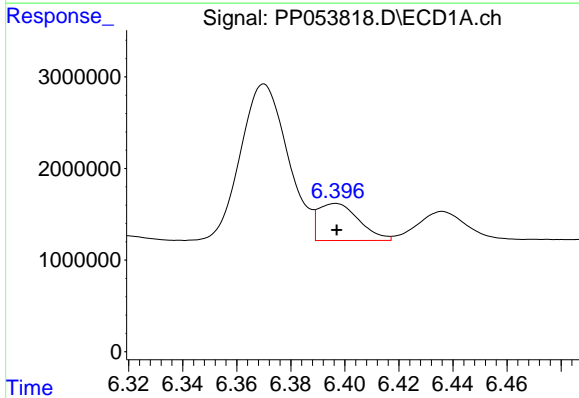
R.T.: 5.992 min  
 Delta R.T.: 0.000 min  
 Response: 26798678  
 Conc: 382.59 ng/ml

Instrument :  
 ECD\_P  
 ClientSampleId :



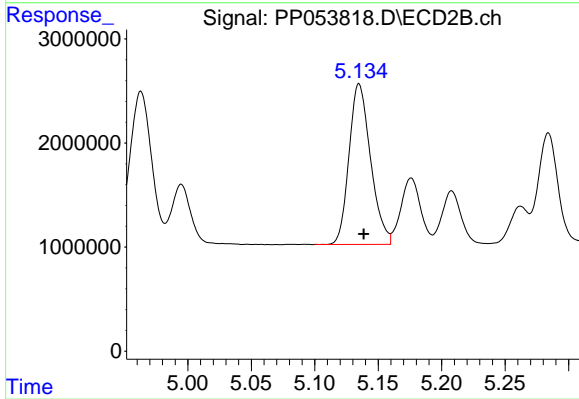
#23 AR-1248-3

R.T.: 4.963 min  
 Delta R.T.: -0.003 min  
 Response: 17911528  
 Conc: 426.49 ng/ml



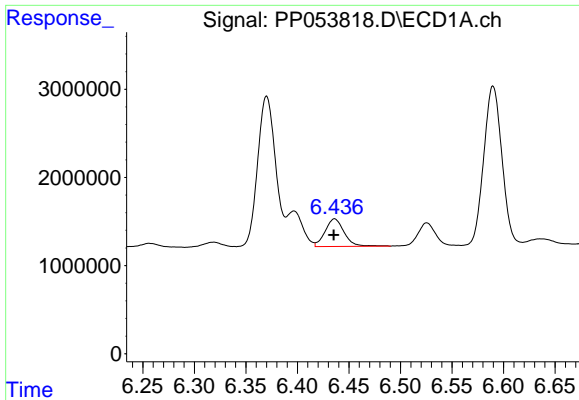
#24 AR-1248-4

R.T.: 6.397 min  
 Delta R.T.: 0.000 min  
 Response: 4230011  
 Conc: 59.98 ng/ml



#24 AR-1248-4

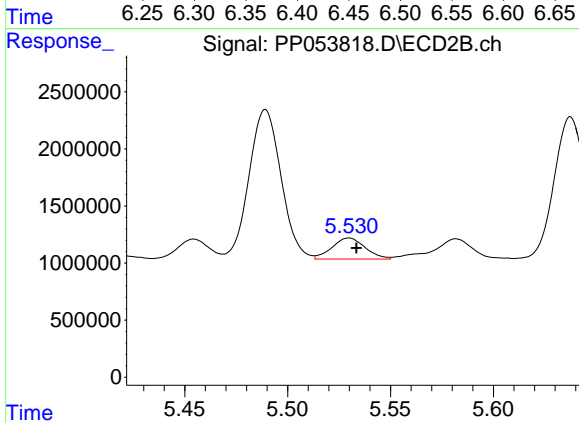
R.T.: 5.135 min  
 Delta R.T.: -0.004 min  
 Response: 18253483  
 Conc: 379.38 ng/ml



#25 AR-1248-5

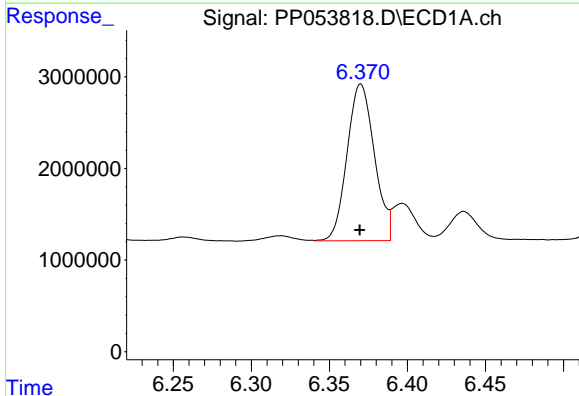
R.T.: 6.436 min  
 Delta R.T.: 0.000 min  
 Response: 4060976  
 Conc: 57.63 ng/ml

Instrument :  
 ECD\_P  
 ClientSampleId :



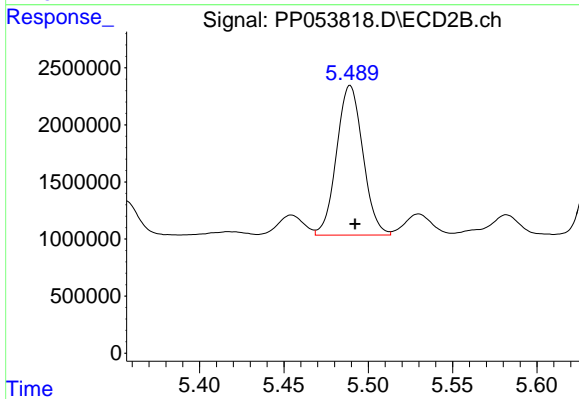
#25 AR-1248-5

R.T.: 5.530 min  
 Delta R.T.: -0.004 min  
 Response: 2079877  
 Conc: 55.39 ng/ml



#26 AR-1254-1

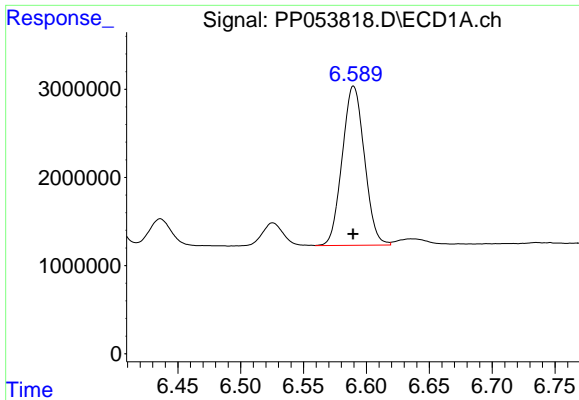
R.T.: 6.370 min  
 Delta R.T.: 0.000 min  
 Response: 20796118  
 Conc: 268.36 ng/ml



#26 AR-1254-1

R.T.: 5.489 min  
 Delta R.T.: -0.003 min  
 Response: 14237222  
 Conc: 217.42 ng/ml

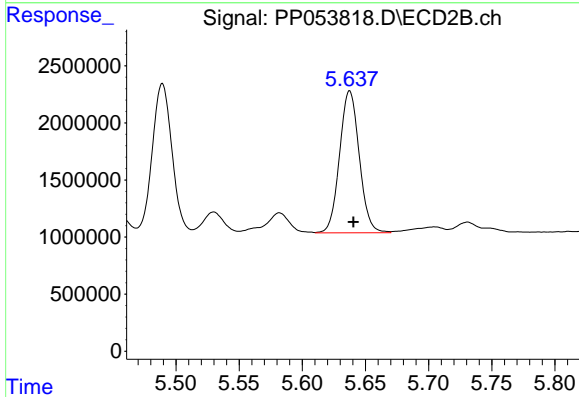




#27 AR-1254-2

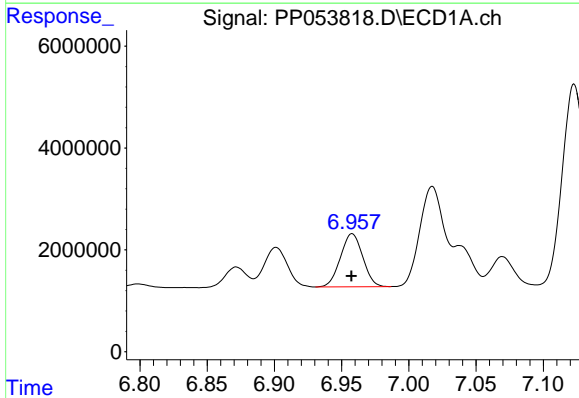
R.T.: 6.590 min  
 Delta R.T.: 0.000 min  
 Response: 22190233  
 Conc: 190.73 ng/ml

Instrument :  
 ECD\_P  
 ClientSampleId :



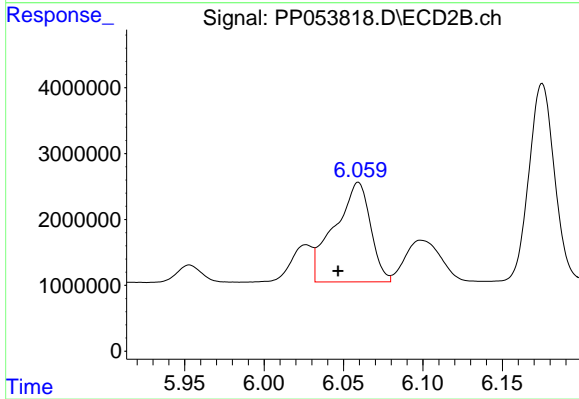
#27 AR-1254-2

R.T.: 5.638 min  
 Delta R.T.: -0.003 min  
 Response: 13489174  
 Conc: 231.30 ng/ml



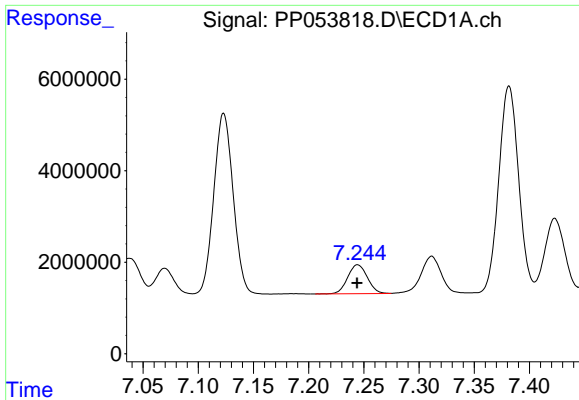
#28 AR-1254-3

R.T.: 6.958 min  
 Delta R.T.: 0.000 min  
 Response: 12009445  
 Conc: 102.53 ng/ml



#28 AR-1254-3

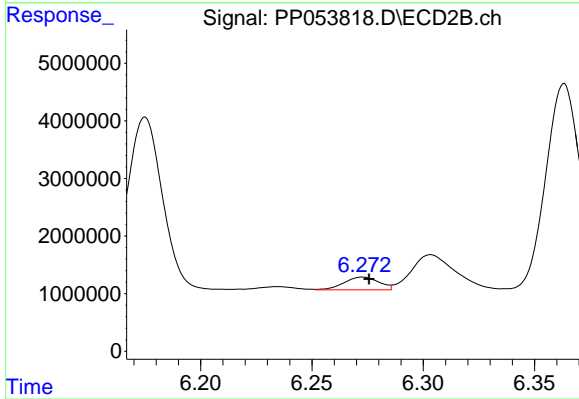
R.T.: 6.059 min  
 Delta R.T.: 0.013 min  
 Response: 23822607  
 Conc: 270.80 ng/ml



#29 AR-1254-4

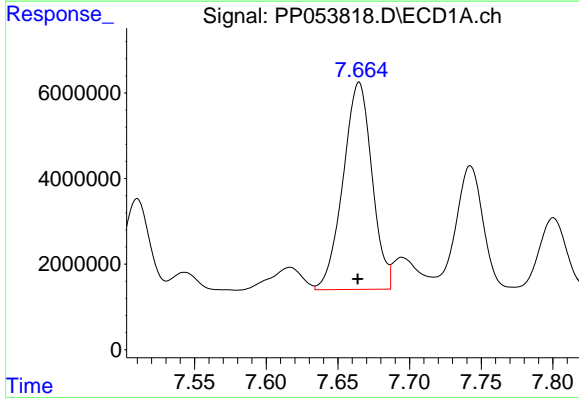
R.T.: 7.244 min  
 Delta R.T.: 0.000 min  
 Response: 7837732  
 Conc: 98.86 ng/ml

Instrument :  
 ECD\_P  
 ClientSampleId :



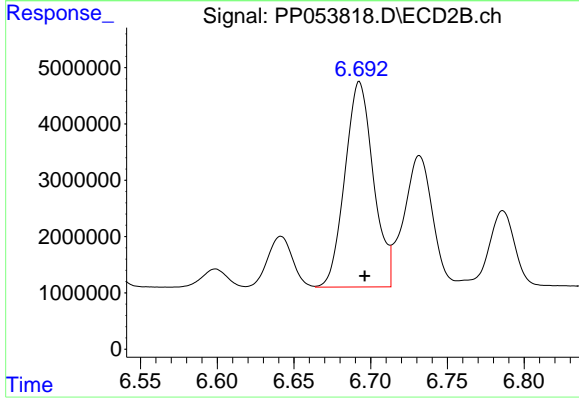
#29 AR-1254-4

R.T.: 6.273 min  
 Delta R.T.: -0.003 min  
 Response: 2410801  
 Conc: 52.62 ng/ml



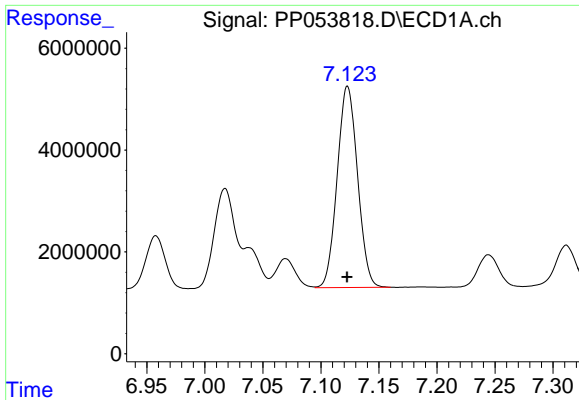
#30 AR-1254-5

R.T.: 7.665 min  
 Delta R.T.: 0.001 min  
 Response: 68037763  
 Conc: 697.64 ng/ml



#30 AR-1254-5

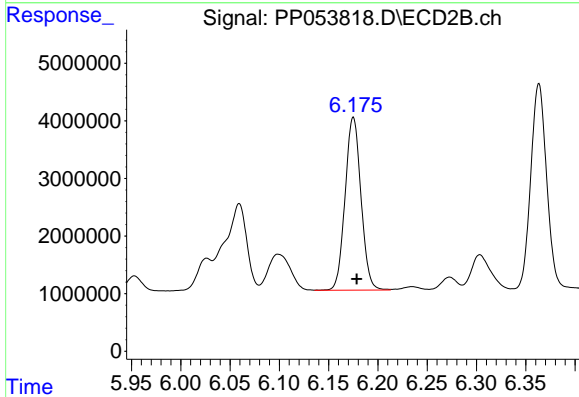
R.T.: 6.693 min  
 Delta R.T.: -0.003 min  
 Response: 47296150  
 Conc: 606.88 ng/ml



#31 AR-1260-1

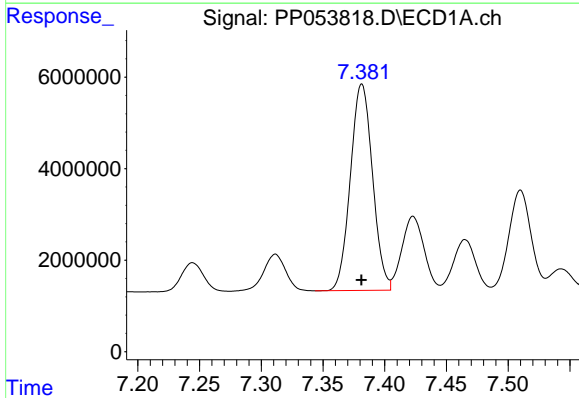
R.T.: 7.123 min  
 Delta R.T.: 0.000 min  
 Response: 48339774  
 Conc: 500.55 ng/ml

Instrument :  
 ECD\_P  
 ClientSampleId :



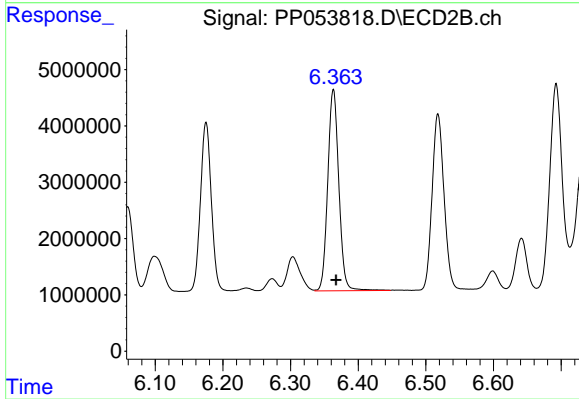
#31 AR-1260-1

R.T.: 6.175 min  
 Delta R.T.: -0.003 min  
 Response: 33730754  
 Conc: 517.11 ng/ml



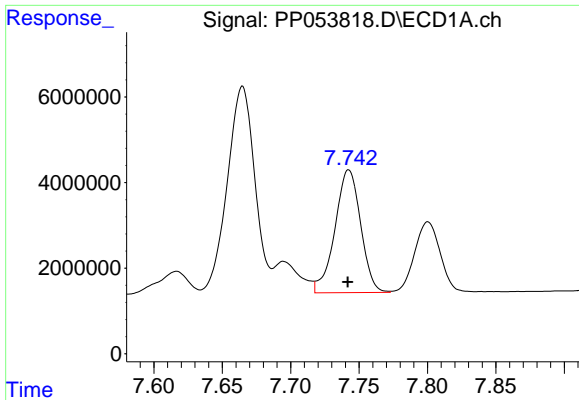
#32 AR-1260-2

R.T.: 7.381 min  
 Delta R.T.: 0.000 min  
 Response: 56285757  
 Conc: 509.51 ng/ml



#32 AR-1260-2

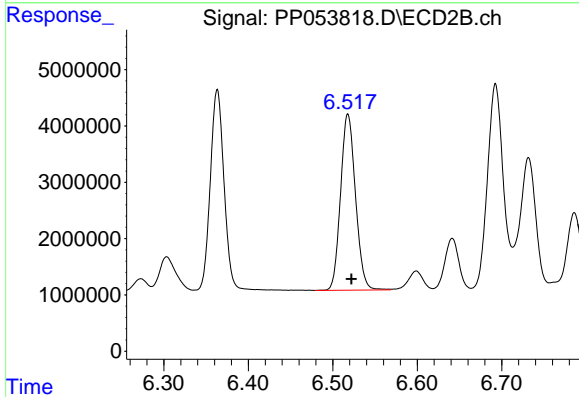
R.T.: 6.363 min  
 Delta R.T.: -0.004 min  
 Response: 40707252  
 Conc: 540.56 ng/ml



#33 AR-1260-3

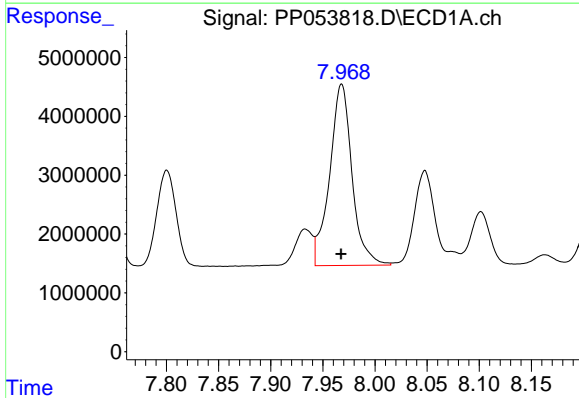
R.T.: 7.742 min  
 Delta R.T.: 0.000 min  
 Response: 37598674  
 Conc: 497.27 ng/ml

Instrument :  
 ECD\_P  
 ClientSampleId :



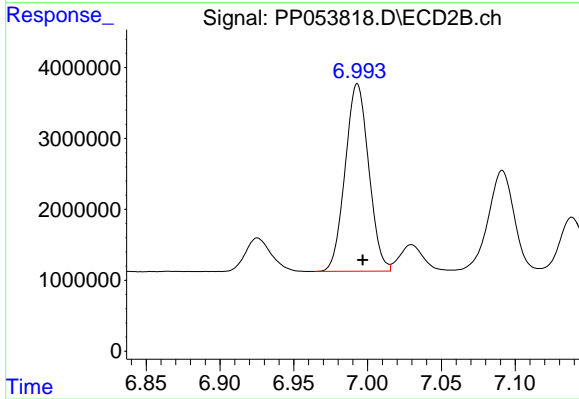
#33 AR-1260-3

R.T.: 6.518 min  
 Delta R.T.: -0.004 min  
 Response: 38406491  
 Conc: 529.86 ng/ml



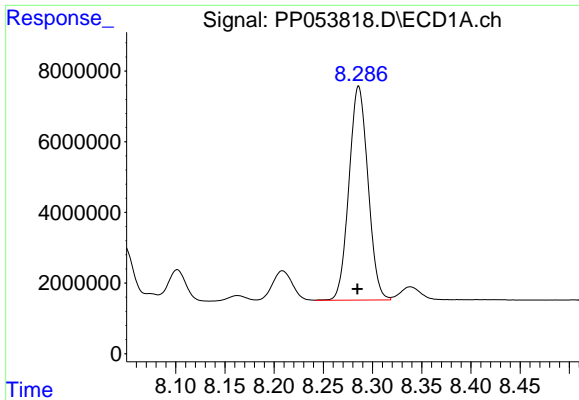
#34 AR-1260-4

R.T.: 7.968 min  
 Delta R.T.: 0.000 min  
 Response: 46090299  
 Conc: 491.08 ng/ml



#34 AR-1260-4

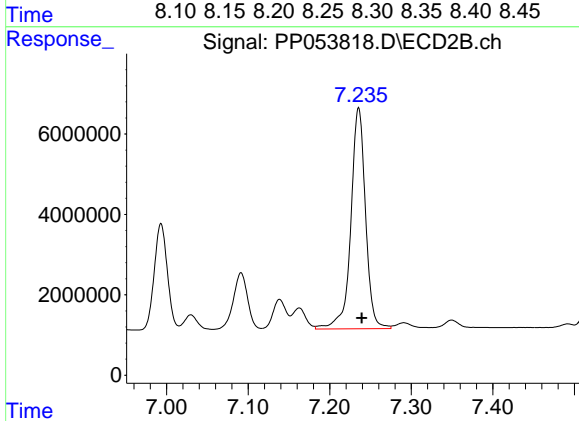
R.T.: 6.993 min  
 Delta R.T.: -0.004 min  
 Response: 29405904  
 Conc: 541.96 ng/ml



#35 AR-1260-5

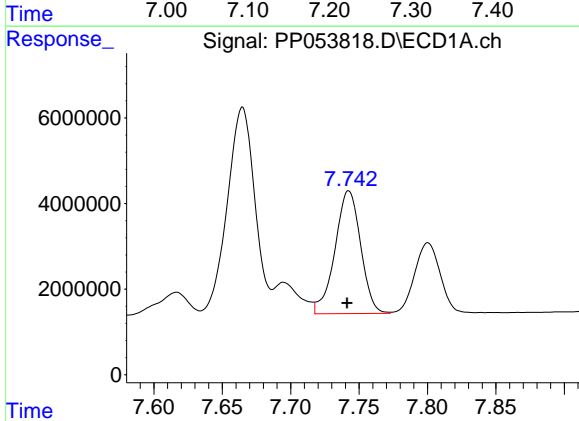
R.T.: 8.286 min  
 Delta R.T.: 0.001 min  
 Response: 81361860  
 Conc: 513.10 ng/ml

Instrument :  
 ECD\_P  
 ClientSampleId :



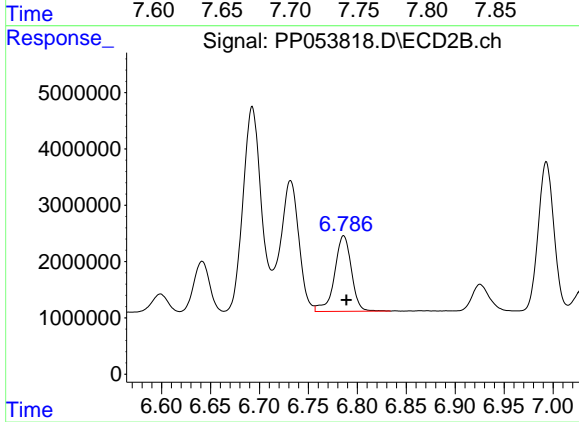
#35 AR-1260-5

R.T.: 7.235 min  
 Delta R.T.: -0.004 min  
 Response: 68876268  
 Conc: 575.96 ng/ml



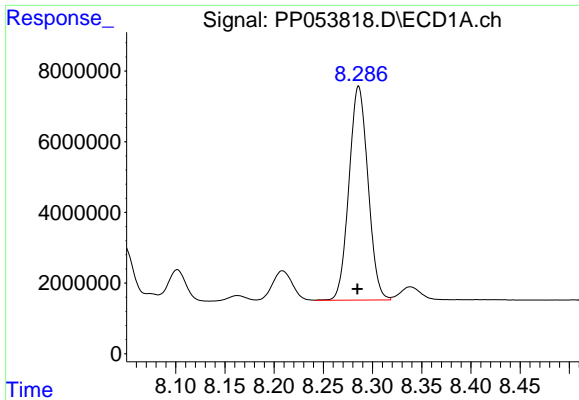
#36 AR-1262-1

R.T.: 7.742 min  
 Delta R.T.: 0.001 min  
 Response: 37598674  
 Conc: 314.09 ng/ml



#36 AR-1262-1

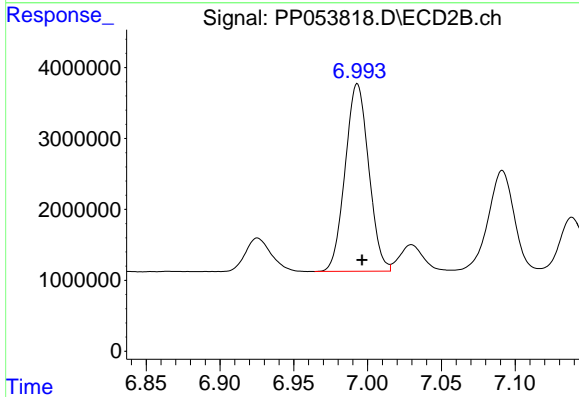
R.T.: 6.786 min  
 Delta R.T.: -0.003 min  
 Response: 16145483  
 Conc: 452.69 ng/ml



#37 AR-1262-2

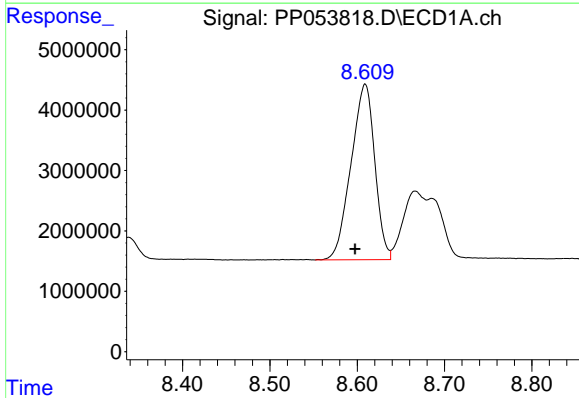
R.T.: 8.286 min  
 Delta R.T.: 0.001 min  
 Response: 81361860  
 Conc: 424.30 ng/ml

Instrument :  
 ECD\_P  
 ClientSampleId :



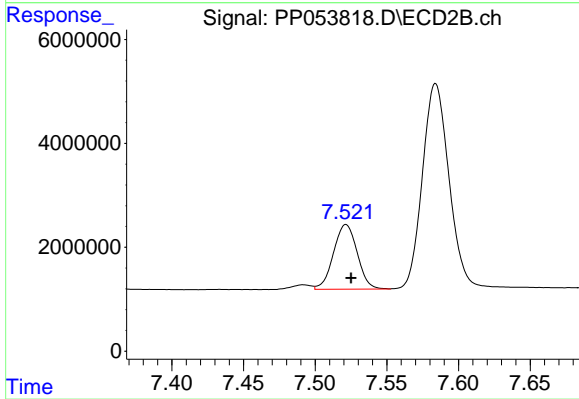
#37 AR-1262-2

R.T.: 6.993 min  
 Delta R.T.: -0.003 min  
 Response: 29405904  
 Conc: 378.30 ng/ml



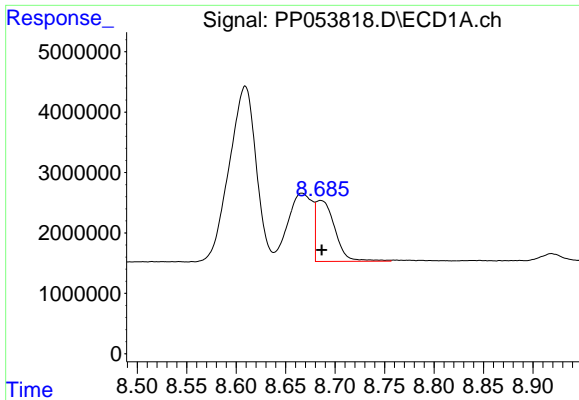
#38 AR-1262-3

R.T.: 8.609 min  
 Delta R.T.: 0.012 min  
 Response: 54908168  
 Conc: 396.26 ng/ml



#38 AR-1262-3

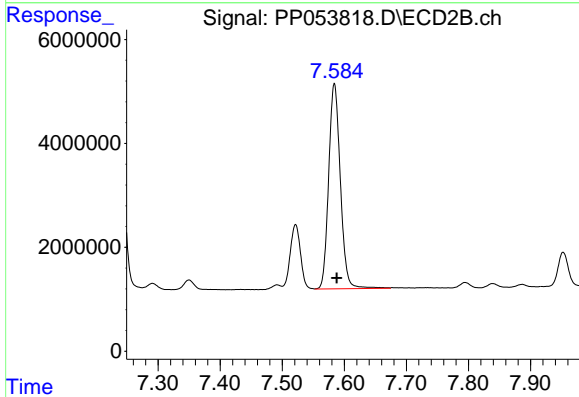
R.T.: 7.521 min  
 Delta R.T.: -0.004 min  
 Response: 14339107  
 Conc: 227.59 ng/ml



#39 AR-1262-4

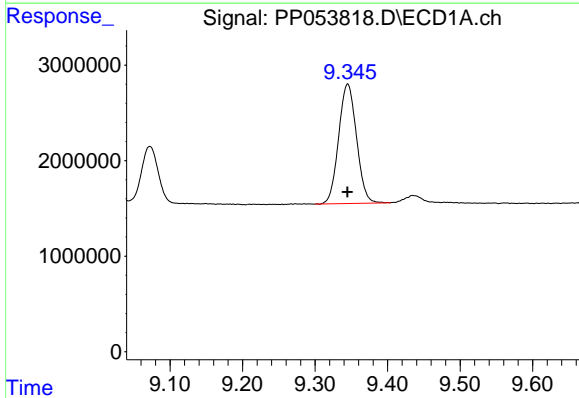
R.T.: 8.685 min  
 Delta R.T.: -0.001 min  
 Response: 13431685  
 Conc: 215.82 ng/ml

Instrument :  
 ECD\_P  
 ClientSampleId :



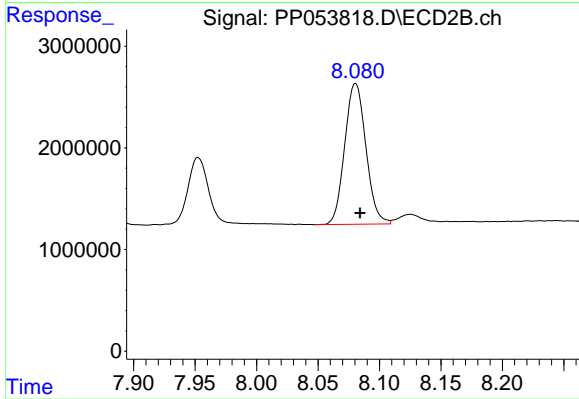
#39 AR-1262-4

R.T.: 7.584 min  
 Delta R.T.: -0.004 min  
 Response: 51665025  
 Conc: 451.86 ng/ml



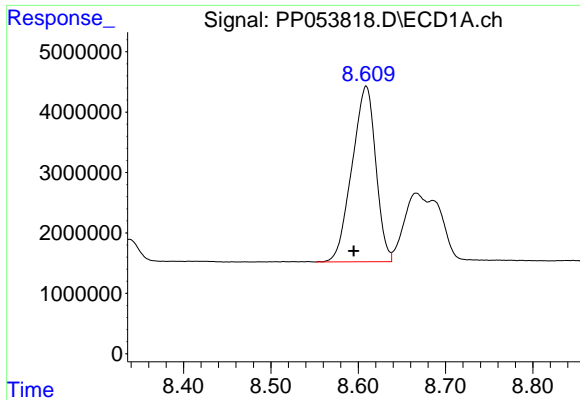
#40 AR-1262-5

R.T.: 9.345 min  
 Delta R.T.: 0.000 min  
 Response: 21429416  
 Conc: 303.26 ng/ml



#40 AR-1262-5

R.T.: 8.081 min  
 Delta R.T.: -0.004 min  
 Response: 16650495  
 Conc: 334.24 ng/ml

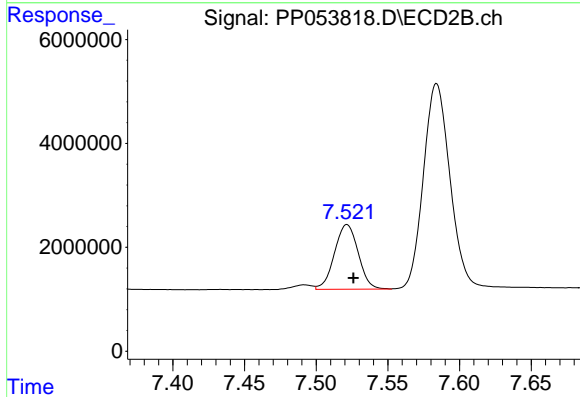


#41 AR-1268-1

R.T.: 8.609 min  
 Delta R.T.: 0.014 min  
 Response: 54908168  
 Conc: 224.99 ng/ml

Instrument :  
 ECD\_P  
 ClientSampleId :

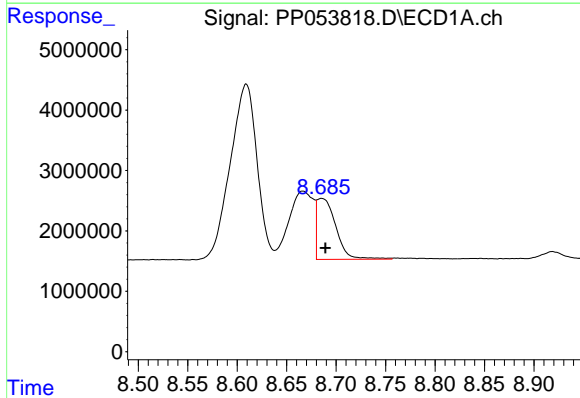
Time



#41 AR-1268-1

R.T.: 7.521 min  
 Delta R.T.: -0.004 min  
 Response: 14339107  
 Conc: 79.26 ng/ml

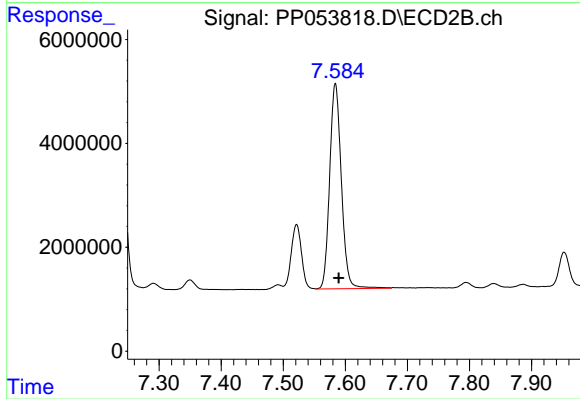
Time



#42 AR-1268-2

R.T.: 8.685 min  
 Delta R.T.: -0.004 min  
 Response: 13431685  
 Conc: 59.10 ng/ml

Time

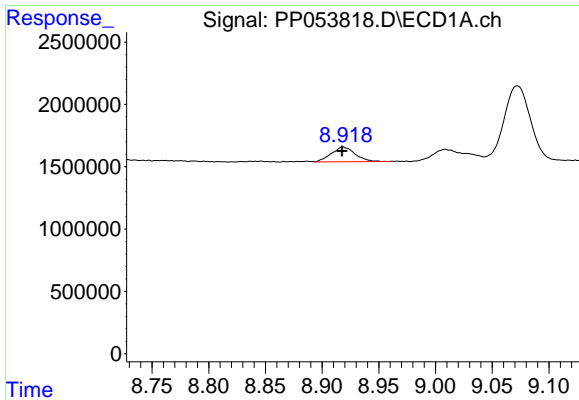


#42 AR-1268-2

R.T.: 7.584 min  
 Delta R.T.: -0.005 min  
 Response: 51665025  
 Conc: 302.76 ng/ml

Time

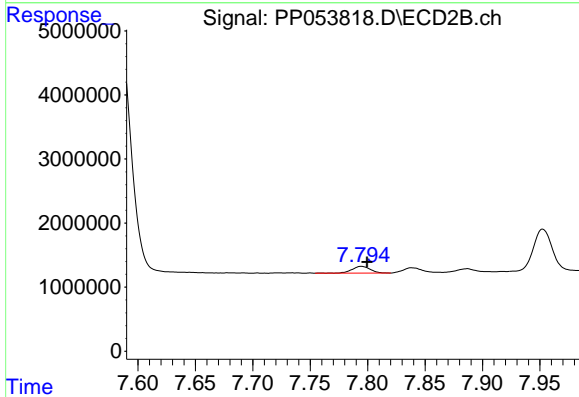




#43 AR-1268-3

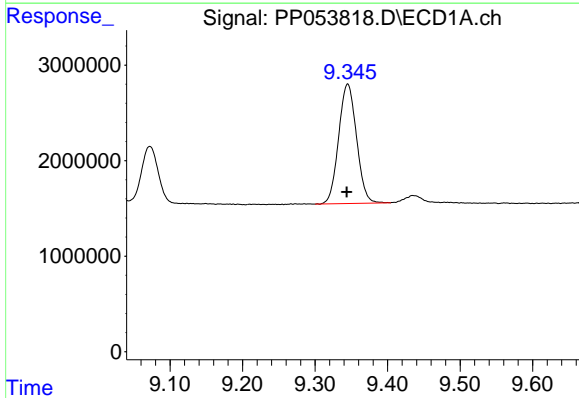
R.T.: 8.918 min  
 Delta R.T.: 0.000 min  
 Response: 1727766  
 Conc: 9.02 ng/ml

Instrument :  
 ECD\_P  
 ClientSampleId :



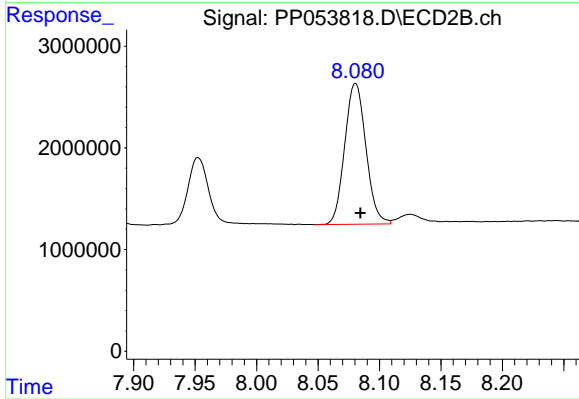
#43 AR-1268-3

R.T.: 7.795 min  
 Delta R.T.: -0.005 min  
 Response: 1174523  
 Conc: 7.95 ng/ml



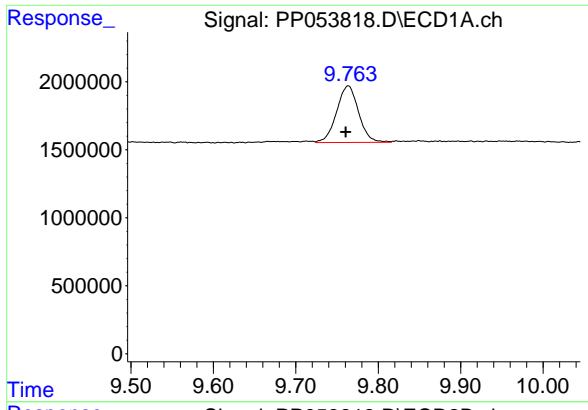
#44 AR-1268-4

R.T.: 9.345 min  
 Delta R.T.: 0.002 min  
 Response: 21429416  
 Conc: 278.39 ng/ml



#44 AR-1268-4

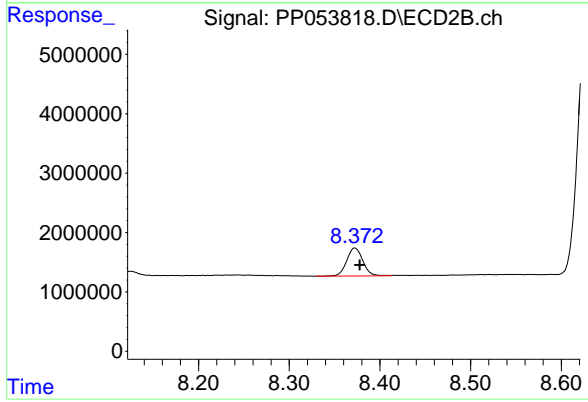
R.T.: 8.081 min  
 Delta R.T.: -0.004 min  
 Response: 16650495  
 Conc: 298.76 ng/ml



#45 AR-1268-5

R.T.: 9.764 min  
Delta R.T.: 0.003 min  
Response: 7728874  
Conc: 13.14 ng/ml

Instrument :  
ECD\_P  
ClientSampleId :



#45 AR-1268-5

R.T.: 8.372 min  
Delta R.T.: -0.006 min  
Response: 5854720  
Conc: 12.38 ng/ml