

Data Path : Z:\pestpcbsrv\HPCHEM1\ECD_P\Data\PP121922\
 Data File : PP053830.D
 Signal(s) : Signal #1: ECD1A.ch Signal #2: ECD2B.ch
 Acq On : 19 Dec 2022 14:51
 Operator : YP\AJ
 Sample : N6091-02
 Misc :
 ALS Vial : 14 Sample Multiplier: 1

Instrument :
 ECD_P
 ClientSampleId :
 BU-03-121522

Integration File signal 1: autoint1.e
 Integration File signal 2: autoint2.e
 Quant Time: Dec 20 03:20:15 2022
 Quant Method : Z:\pestpcbsrv\HPCHEM1\ECD_P\methods\PP121322.M
 Quant Title : GC EXTRACTABLES
 QLast Update : Wed Dec 14 05:38:40 2022
 Response via : Initial Calibration
 Integrator: ChemStation

Volume Inj. : 2 µl
 Signal #1 Phase : ZB-MR1 Signal #2 Phase: ZB-MR2
 Signal #1 Info : 30Mx0.32mmx 0.50µ Signal #2 Info : 30M x 0.32mm x 0.25µm

Compound	RT#1	RT#2	Resp#1	Resp#2	ng/ml	ng/ml

System Monitoring Compounds						
1) SA Tetrachlo...	4.339	3.591	48893100	34819813	23.285	22.296
2) SA Decachlor...	10.102	8.629	37187052	30318447	21.903	21.706
Target Compounds						
3) L1 AR-1016-1	5.512	4.698	313220	177330	4.619	3.861
4) L1 AR-1016-2	5.533	4.698	240512	177330	2.415	2.830
5) L1 AR-1016-3	5.592	4.884	300582	650307	4.756	19.160 #
6) L1 AR-1016-4	5.692	4.932	54835	649424	1.107	21.794 #
7) L1 AR-1016-5	6.003	5.125	2882886	434286	54.770	11.976 #
8) L2 AR-1221-1	4.546	0.000	785999	0	30.510	N.D. #
9) L2 AR-1221-2	4.646	3.891	746352	990516	38.336	67.763 #
10) L2 AR-1221-3	4.710	3.963	51153	361224	0.880	8.121 #
11) L3 AR-1232-1	4.710	3.963	51153	361224	1.142	10.497 #
12) L3 AR-1232-2	5.267f	4.698	440392	177330	17.120	5.941 #
13) L3 AR-1232-3	5.533	4.884	240512	650307	5.124	41.045 #
14) L3 AR-1232-4	5.692	4.991f	54835	2189699	2.314	141.704 #
15) L3 AR-1232-5	5.788	5.125	258900	434286	14.038	26.373 #
16) L4 AR-1242-1	5.512	4.698	313220	177330	5.980	5.007
17) L4 AR-1242-2	5.533	4.698	240512	177330	3.157	3.691
18) L4 AR-1242-3	5.592	4.884	300582	650307	6.135	24.944 #
19) L4 AR-1242-4	5.692	4.991f	54835	2189699	1.428	76.754 #
20) L4 AR-1242-5	6.443	5.491	57837	343921	1.418	11.268 #
21) L5 AR-1248-1	5.512	4.698	313220	177330	7.432	6.234
22) L5 AR-1248-2	5.788	4.932	258900	649424	4.097	15.698 #
23) L5 AR-1248-3	6.003	4.991f	2882886	2189699	41.158	52.139 #
24) L5 AR-1248-4	6.399	5.125	192639	434286	2.731	9.026 #
25) L5 AR-1248-5	6.443	0.000	57837	0	0.821	N.D. #
26) L6 AR-1254-1	6.373	5.491	373280	343921	4.817	5.252
27) L6 AR-1254-2	6.591	5.637	783879	282501	6.737	4.844 #
28) L6 AR-1254-3	6.956	6.044	688038	833393	5.874	9.473 #
29) L6 AR-1254-4	7.242	6.272	633490	347459	7.991	7.584
30) L6 AR-1254-5	7.684f	6.692	1057482	688367	10.843	8.833
31) L7 AR-1260-1	7.124	6.177	514267	624290	5.325	9.571 #
32) L7 AR-1260-2	7.375	6.363	616045	641234	5.577	8.515 #
33) L7 AR-1260-3	7.741	6.517	221034	464653	2.923	6.410 #
34) L7 AR-1260-4	7.952f	6.992	902487	186271	9.616	3.433 #
35) L7 AR-1260-5	8.283	7.234	447209	1371092	2.820	11.465 #
36) L8 AR-1262-1	7.741	6.786	221034	128154	1.846	3.593 #
37) L8 AR-1262-2	8.283	6.992	447209	186271	2.332	2.396
38) L8 AR-1262-3	8.602	7.519	521393	266373	3.763	4.228
39) L8 AR-1262-4	8.688	7.582	670583	451260	10.775	3.947 #
40) L8 AR-1262-5	9.335	8.068f	415753	42363	5.883	0.850 #
41) L9 AR-1268-1	8.602	7.519	521393	266373	2.136	1.472 #

Data Path : Z:\pestpcbsrv\HPCHEM1\ECD_P\Data\PP121922\
 Data File : PP053830.D
 Signal(s) : Signal #1: ECD1A.ch Signal #2: ECD2B.ch
 Acq On : 19 Dec 2022 14:51
 Operator : YP\AJ
 Sample : N6091-02
 Misc :
 ALS Vial : 14 Sample Multiplier: 1

Instrument :
 ECD_P
 ClientSampleId :
 BU-03-121522

Integration File signal 1: autoint1.e
 Integration File signal 2: autoint2.e
 Quant Time: Dec 20 03:20:15 2022
 Quant Method : Z:\pestpcbsrv\HPCHEM1\ECD_P\methods\PP121322.M
 Quant Title : GC EXTRACTABLES
 QLast Update : Wed Dec 14 05:38:40 2022
 Response via : Initial Calibration
 Integrator: ChemStation

Volume Inj. : 2 µl
 Signal #1 Phase : ZB-MR1 Signal #2 Phase: ZB-MR2
 Signal #1 Info : 30Mx0.32mmx 0.50µ Signal #2 Info : 30M x 0.32mm x 0.25µm

	Compound	RT#1	RT#2	Resp#1	Resp#2	ng/ml	ng/ml
42)	L9 AR-1268-2	8.688	7.582	670583	451260	2.951	2.644
43)	L9 AR-1268-3	8.927	7.795	12220	63419	0.064	0.429 #
44)	L9 AR-1268-4	9.335	8.068f	415753	42363	5.401	0.760 #
45)	L9 AR-1268-5	9.768	8.375	899888	107665	1.530	0.228 #

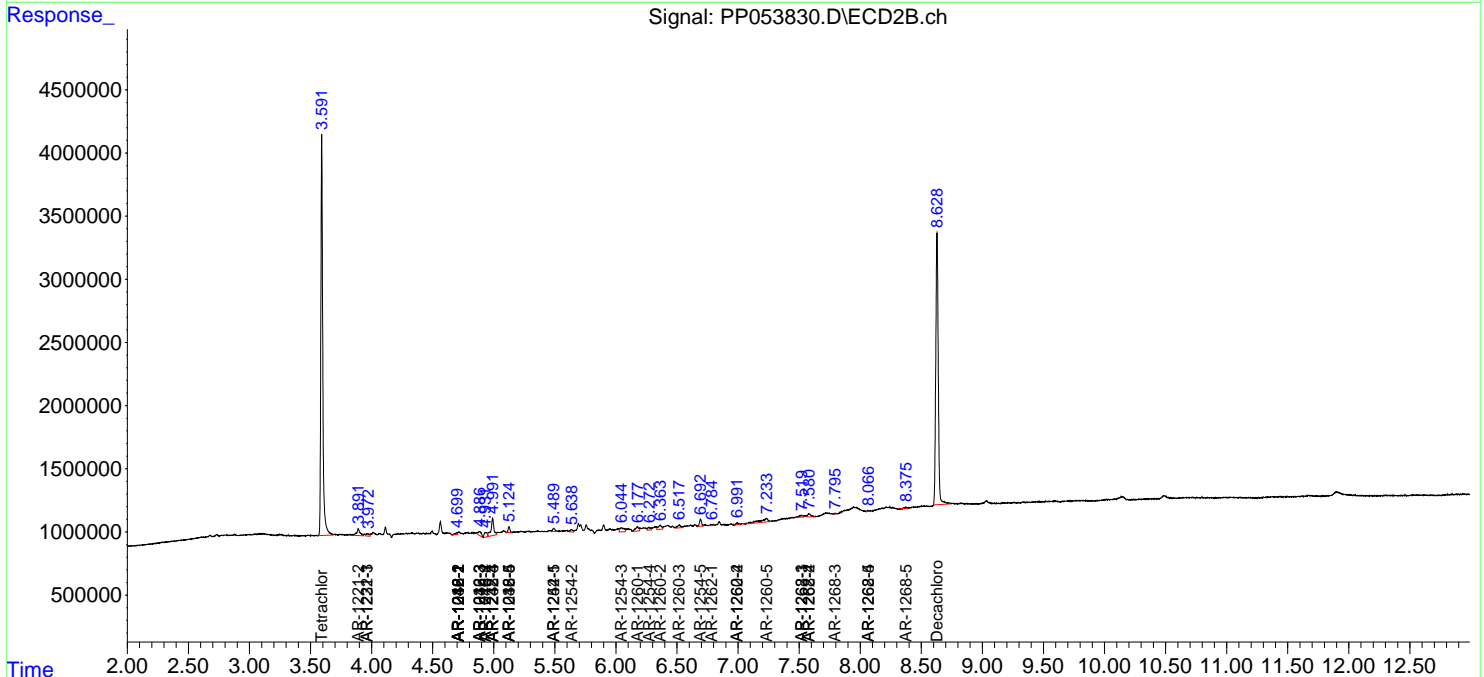
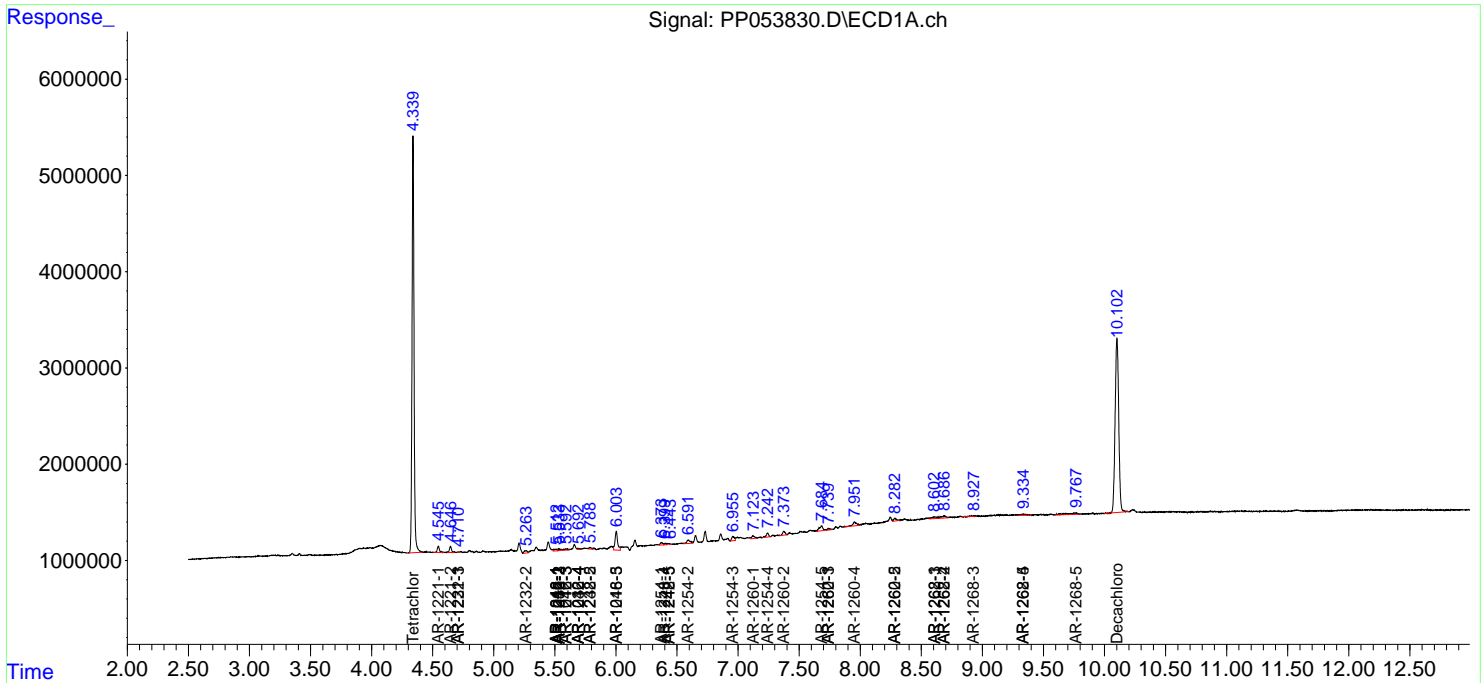
(f)=RT Delta > 1/2 Window (#)=Amounts differ by > 25% (m)=manual int.

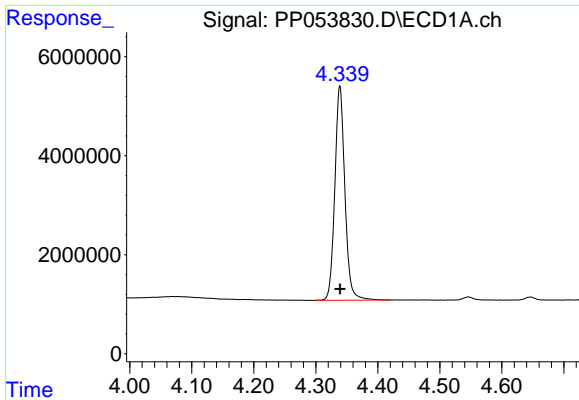
Data Path : Z:\pestpcbsrv\HPCHEM1\ECD_P\Data\PP121922\
 Data File : PP053830.D
 Signal(s) : Signal #1: ECD1A.ch Signal #2: ECD2B.ch
 Acq On : 19 Dec 2022 14:51
 Operator : YP\AJ
 Sample : N6091-02
 Misc :
 ALS Vial : 14 Sample Multiplier: 1

Instrument :
 ECD_P
 ClientSampleId :
 BU-03-121522

Integration File signal 1: autoint1.e
 Integration File signal 2: autoint2.e
 Quant Time: Dec 20 03:20:15 2022
 Quant Method : Z:\pestpcbsrv\HPCHEM1\ECD_P\methods\PP121322.M
 Quant Title : GC EXTRACTABLES
 QLast Update : Wed Dec 14 05:38:40 2022
 Response via : Initial Calibration
 Integrator: ChemStation

Volume Inj. : 2 µl
 Signal #1 Phase : ZB-MR1 Signal #2 Phase: ZB-MR2
 Signal #1 Info : 30Mx0.32mmx 0.50µ Signal #2 Info : 30M x 0.32mm x 0.25µm

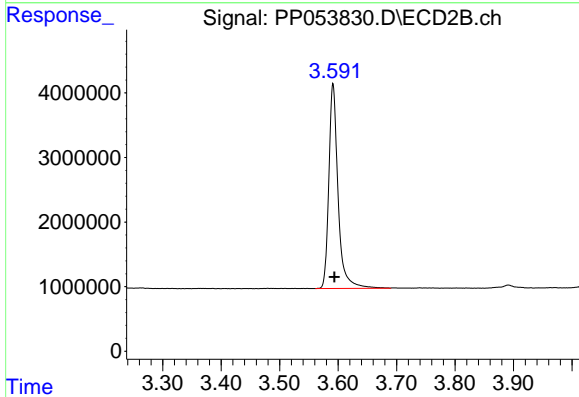




#1 Tetrachloro-m-xylene

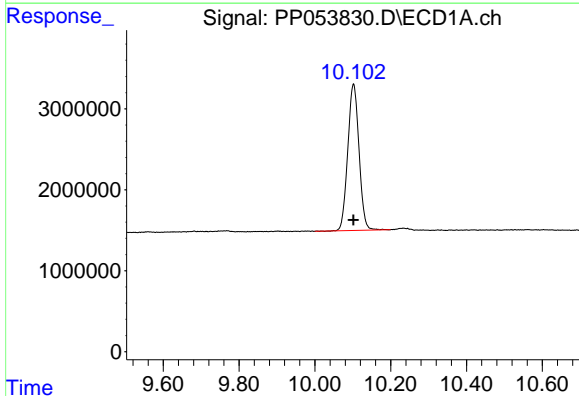
R.T.: 4.339 min
 Delta R.T.: 0.000 min
 Response: 48893100
 Conc: 23.29 ng/ml

Instrument :
 ECD_P
 ClientSampleId :
 BU-03-121522



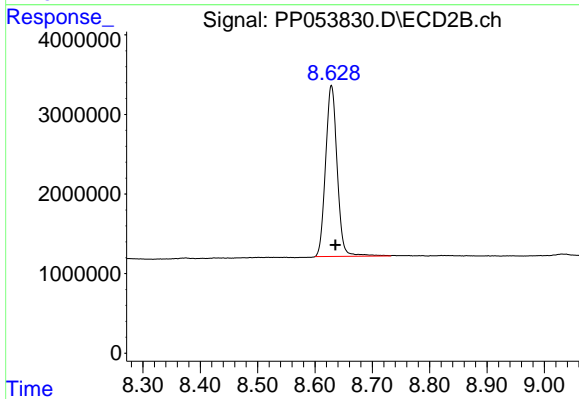
#1 Tetrachloro-m-xylene

R.T.: 3.591 min
 Delta R.T.: -0.002 min
 Response: 34819813
 Conc: 22.30 ng/ml



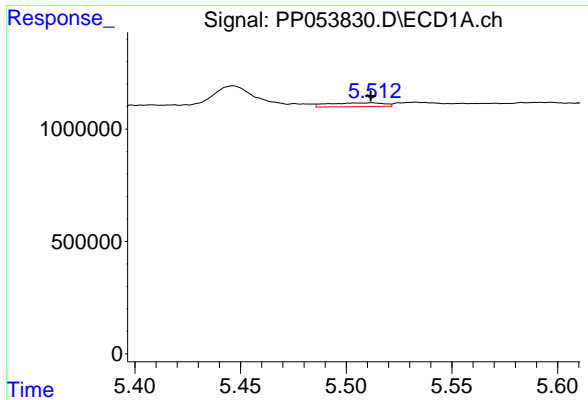
#2 Decachlorobiphenyl

R.T.: 10.102 min
 Delta R.T.: 0.000 min
 Response: 37187052
 Conc: 21.90 ng/ml



#2 Decachlorobiphenyl

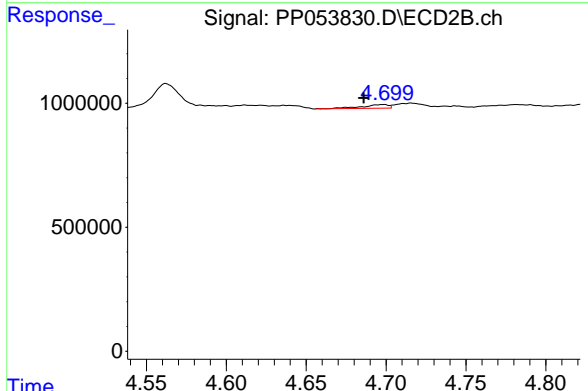
R.T.: 8.629 min
 Delta R.T.: -0.007 min
 Response: 30318447
 Conc: 21.71 ng/ml



#3 AR-1016-1

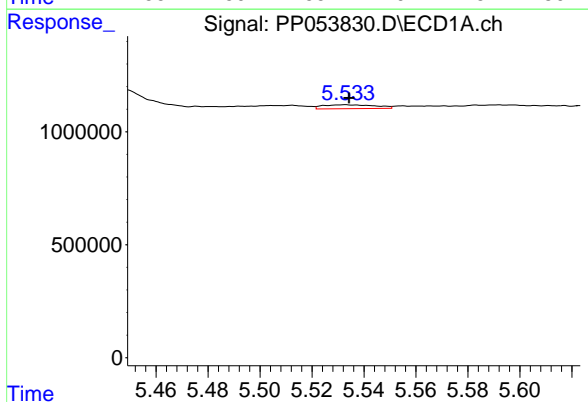
R.T.: 5.512 min
 Delta R.T.: 0.000 min
 Response: 313220
 Conc: 4.62 ng/ml

Instrument :
 ECD_P
 ClientSampleId :
 BU-03-121522



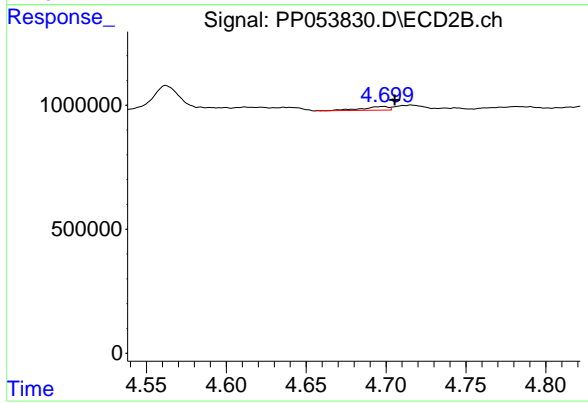
#3 AR-1016-1

R.T.: 4.698 min
 Delta R.T.: 0.012 min
 Response: 177330
 Conc: 3.86 ng/ml



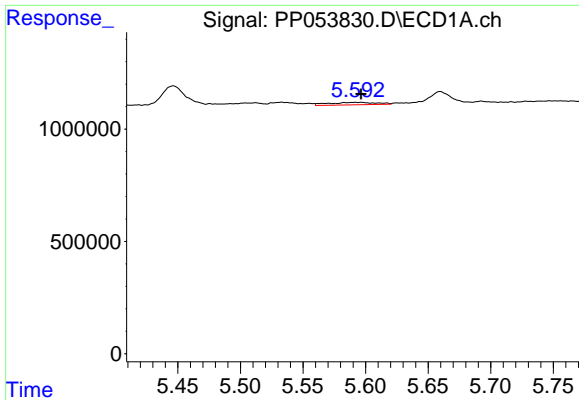
#4 AR-1016-2

R.T.: 5.533 min
 Delta R.T.: -0.002 min
 Response: 240512
 Conc: 2.41 ng/ml



#4 AR-1016-2

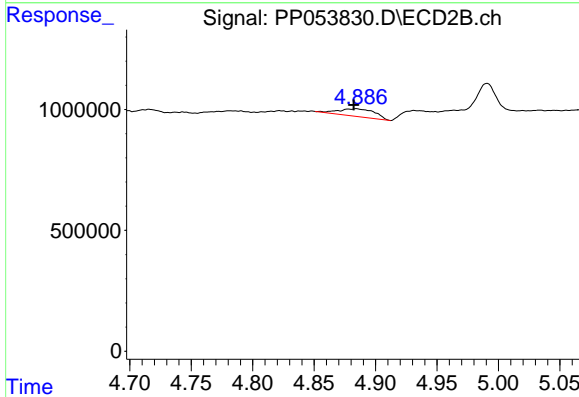
R.T.: 4.698 min
 Delta R.T.: -0.007 min
 Response: 177330
 Conc: 2.83 ng/ml



#5 AR-1016-3

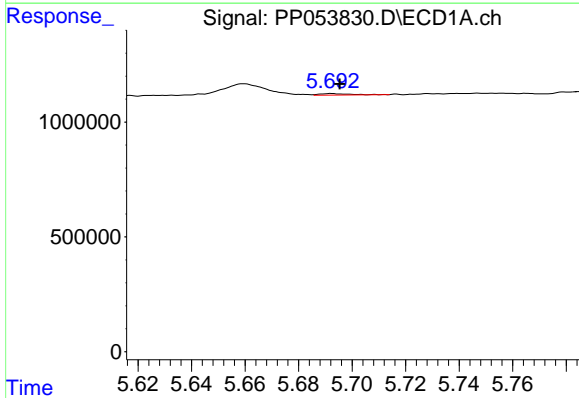
R.T.: 5.592 min
 Delta R.T.: -0.005 min
 Response: 300582
 Conc: 4.76 ng/ml

Instrument :
 ECD_P
 ClientSampleId :
 BU-03-121522



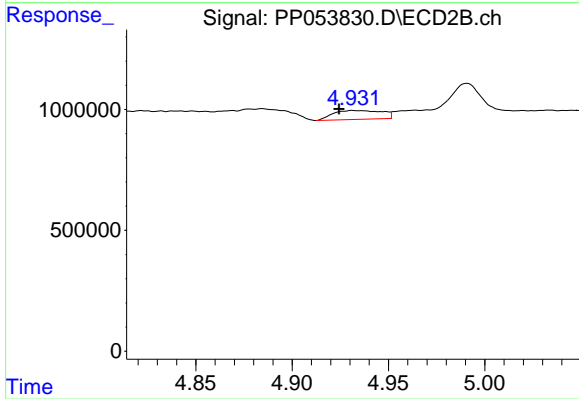
#5 AR-1016-3

R.T.: 4.884 min
 Delta R.T.: 0.002 min
 Response: 650307
 Conc: 19.16 ng/ml



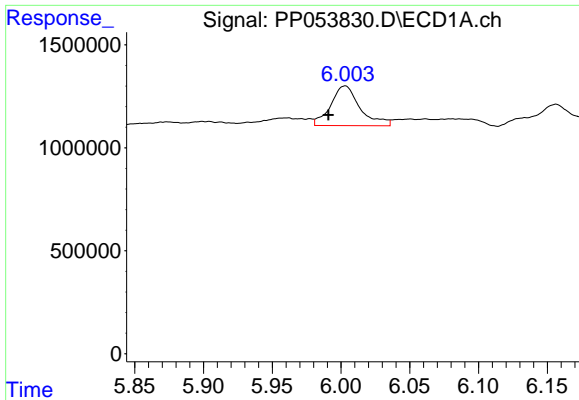
#6 AR-1016-4

R.T.: 5.692 min
 Delta R.T.: -0.003 min
 Response: 54835
 Conc: 1.11 ng/ml



#6 AR-1016-4

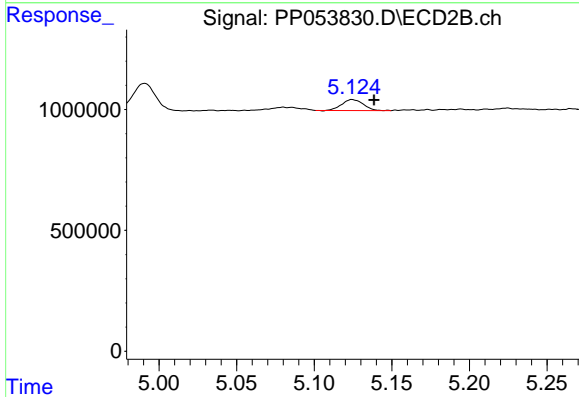
R.T.: 4.932 min
 Delta R.T.: 0.007 min
 Response: 649424
 Conc: 21.79 ng/ml



#7 AR-1016-5

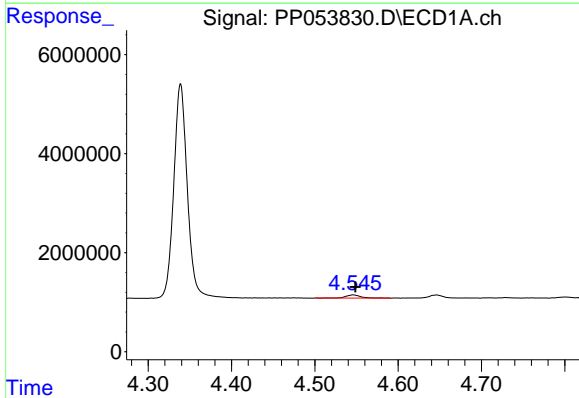
R.T.: 6.003 min
 Delta R.T.: 0.012 min
 Response: 2882886
 Conc: 54.77 ng/ml

Instrument :
 ECD_P
 ClientSampleId :
 BU-03-121522



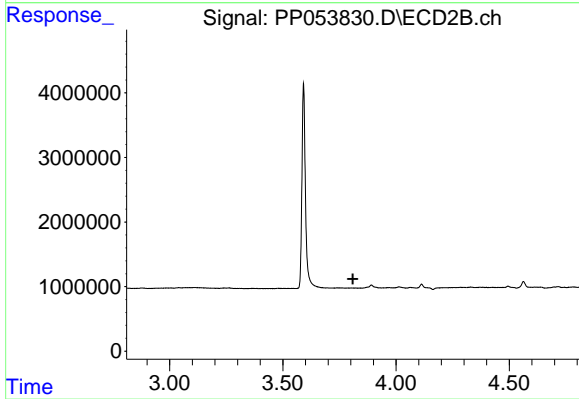
#7 AR-1016-5

R.T.: 5.125 min
 Delta R.T.: -0.014 min
 Response: 434286
 Conc: 11.98 ng/ml



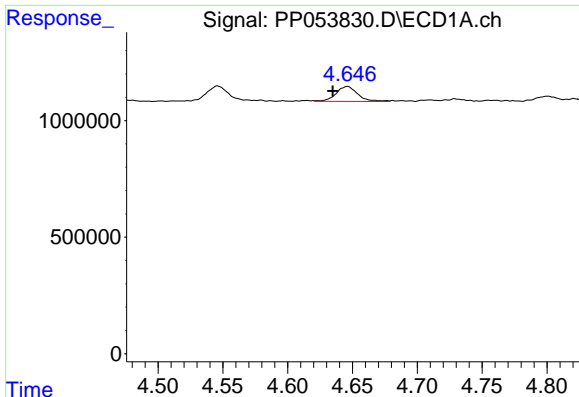
#8 AR-1221-1

R.T.: 4.546 min
 Delta R.T.: -0.003 min
 Response: 785999
 Conc: 30.51 ng/ml



#8 AR-1221-1

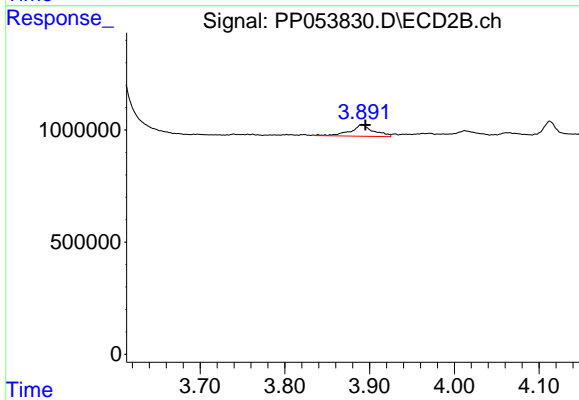
R.T.: 0.000 min
 Exp R.T. : 3.810 min
 Response: 0
 Conc: N.D.



#9 AR-1221-2

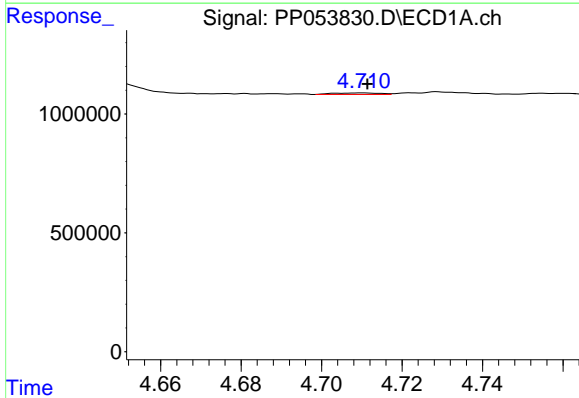
R.T.: 4.646 min
 Delta R.T.: 0.011 min
 Response: 746352
 Conc: 38.34 ng/ml

Instrument :
 ECD_P
 ClientSampleId :
 BU-03-121522



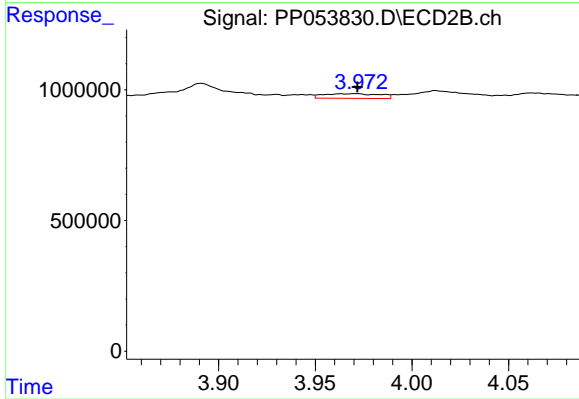
#9 AR-1221-2

R.T.: 3.891 min
 Delta R.T.: -0.004 min
 Response: 990516
 Conc: 67.76 ng/ml



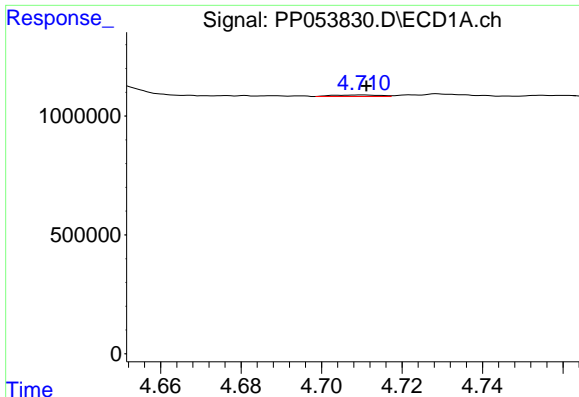
#10 AR-1221-3

R.T.: 4.710 min
 Delta R.T.: -0.001 min
 Response: 51153
 Conc: 0.88 ng/ml



#10 AR-1221-3

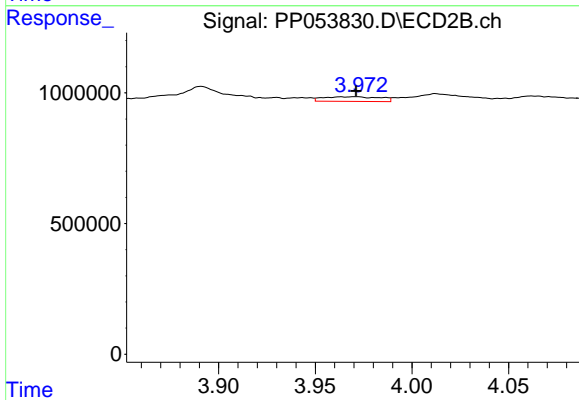
R.T.: 3.963 min
 Delta R.T.: -0.009 min
 Response: 361224
 Conc: 8.12 ng/ml



#11 AR-1232-1

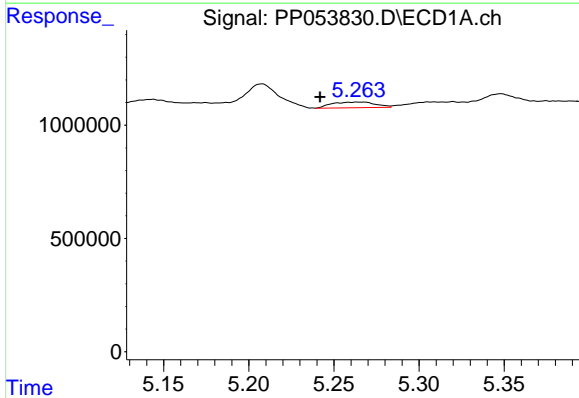
R.T.: 4.710 min
 Delta R.T.: -0.001 min
 Response: 51153
 Conc: 1.14 ng/ml

Instrument :
 ECD_P
 ClientSampleId :
 BU-03-121522



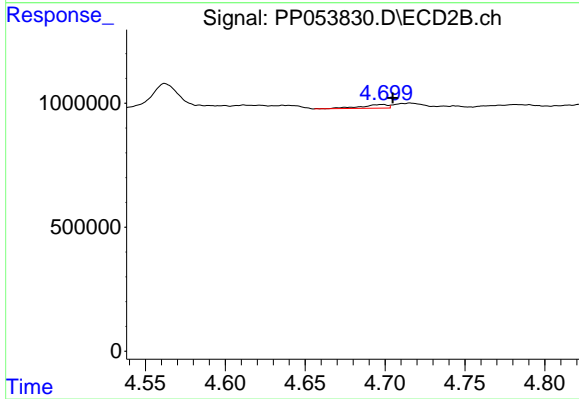
#11 AR-1232-1

R.T.: 3.963 min
 Delta R.T.: -0.008 min
 Response: 361224
 Conc: 10.50 ng/ml



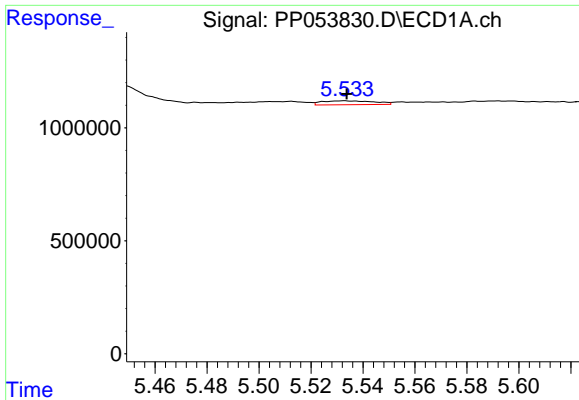
#12 AR-1232-2

R.T.: 5.267 min
 Delta R.T.: 0.025 min
 Response: 440392
 Conc: 17.12 ng/ml



#12 AR-1232-2

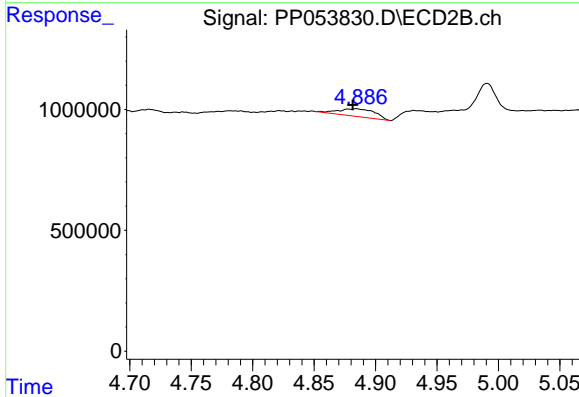
R.T.: 4.698 min
 Delta R.T.: -0.007 min
 Response: 177330
 Conc: 5.94 ng/ml



#13 AR-1232-3

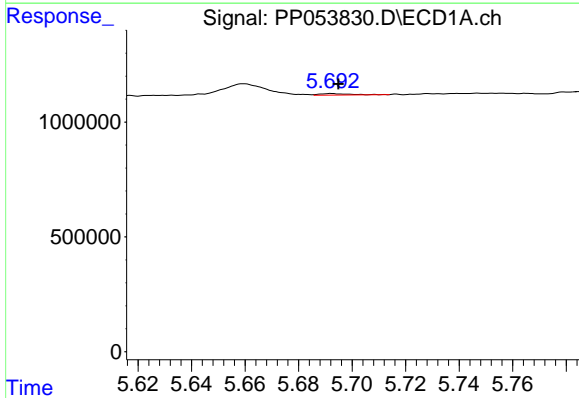
R.T.: 5.533 min
 Delta R.T.: -0.001 min
 Response: 240512
 Conc: 5.12 ng/ml

Instrument :
 ECD_P
 ClientSampleId :
 BU-03-121522



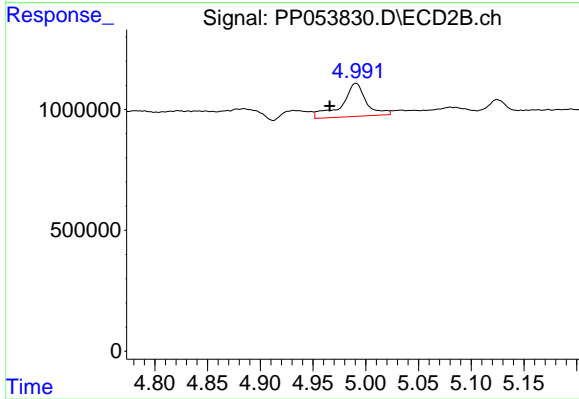
#13 AR-1232-3

R.T.: 4.884 min
 Delta R.T.: 0.003 min
 Response: 650307
 Conc: 41.05 ng/ml



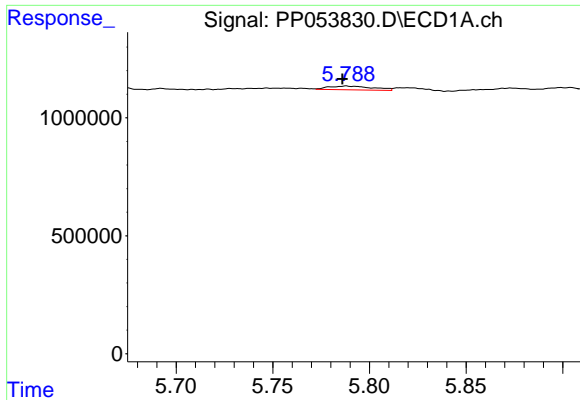
#14 AR-1232-4

R.T.: 5.692 min
 Delta R.T.: -0.003 min
 Response: 54835
 Conc: 2.31 ng/ml



#14 AR-1232-4

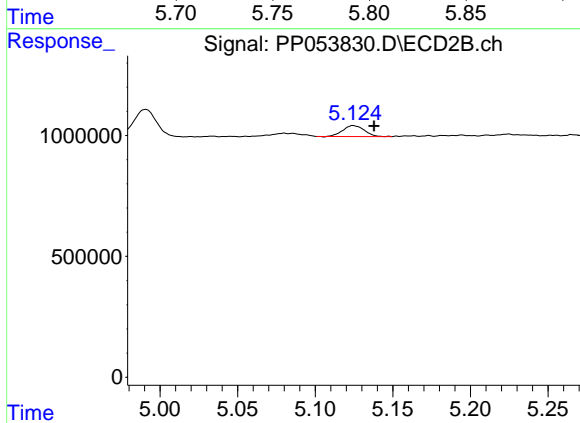
R.T.: 4.991 min
 Delta R.T.: 0.025 min
 Response: 2189699
 Conc: 141.70 ng/ml



#15 AR-1232-5

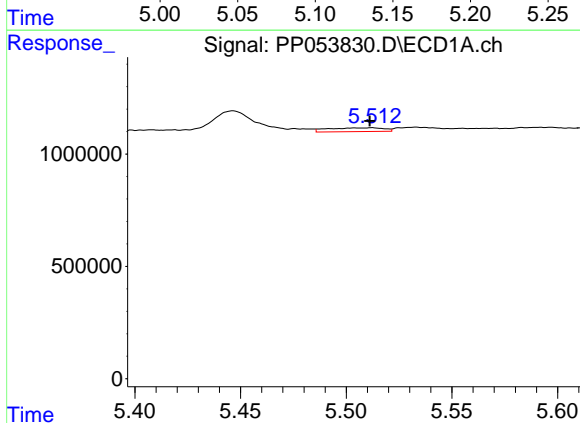
R.T.: 5.788 min
 Delta R.T.: 0.002 min
 Response: 258900
 Conc: 14.04 ng/ml

Instrument :
 ECD_P
 ClientSampleId :
 BU-03-121522



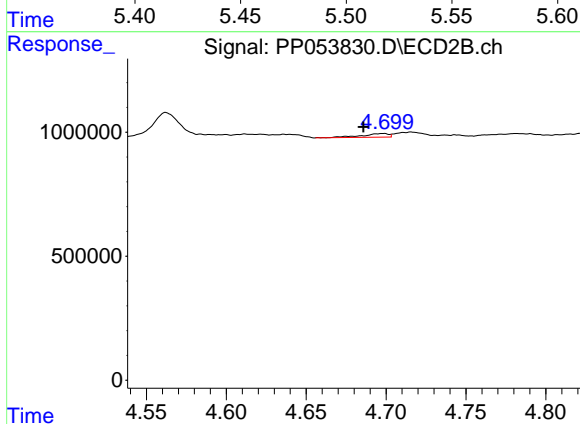
#15 AR-1232-5

R.T.: 5.125 min
 Delta R.T.: -0.013 min
 Response: 434286
 Conc: 26.37 ng/ml



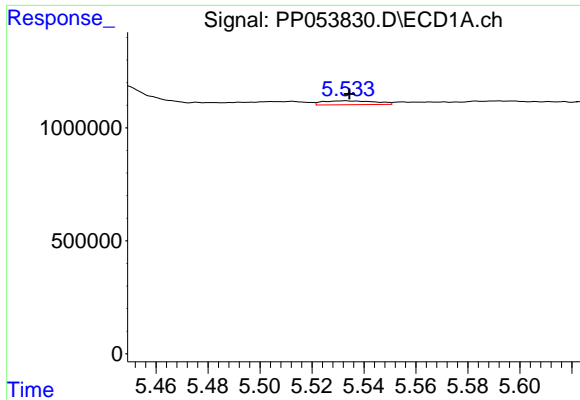
#16 AR-1242-1

R.T.: 5.512 min
 Delta R.T.: 0.000 min
 Response: 313220
 Conc: 5.98 ng/ml



#16 AR-1242-1

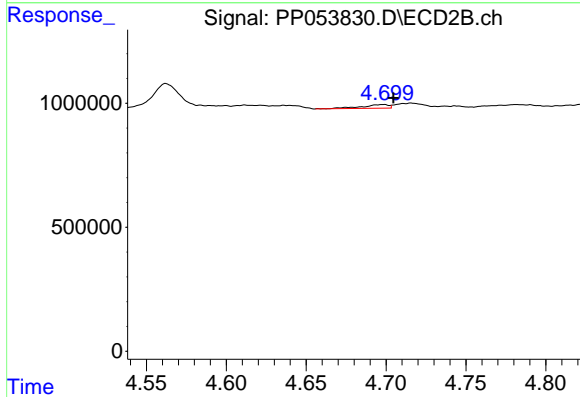
R.T.: 4.698 min
 Delta R.T.: 0.013 min
 Response: 177330
 Conc: 5.01 ng/ml



#17 AR-1242-2

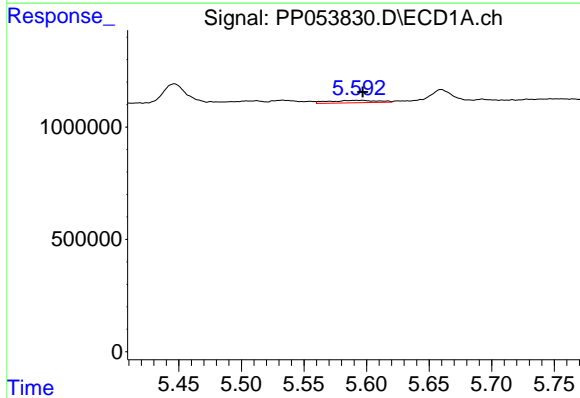
R.T.: 5.533 min
 Delta R.T.: -0.002 min
 Response: 240512
 Conc: 3.16 ng/ml

Instrument :
 ECD_P
 ClientSampleId :
 BU-03-121522



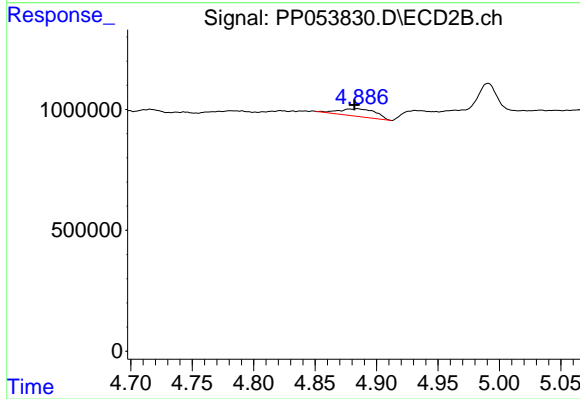
#17 AR-1242-2

R.T.: 4.698 min
 Delta R.T.: -0.006 min
 Response: 177330
 Conc: 3.69 ng/ml



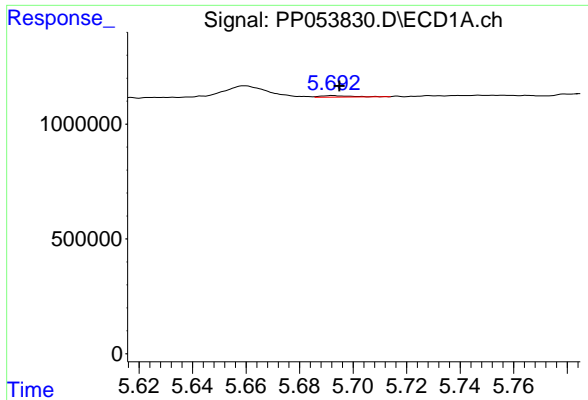
#18 AR-1242-3

R.T.: 5.592 min
 Delta R.T.: -0.005 min
 Response: 300582
 Conc: 6.13 ng/ml



#18 AR-1242-3

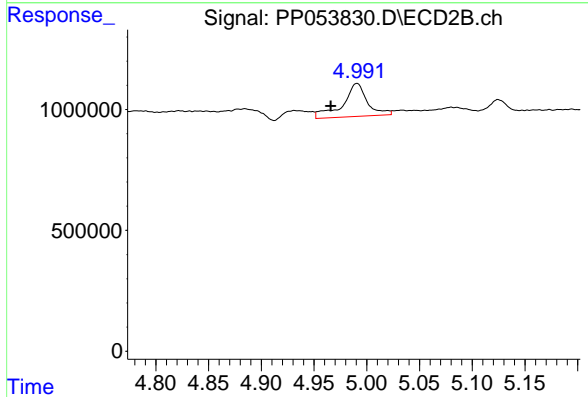
R.T.: 4.884 min
 Delta R.T.: 0.002 min
 Response: 650307
 Conc: 24.94 ng/ml



#19 AR-1242-4

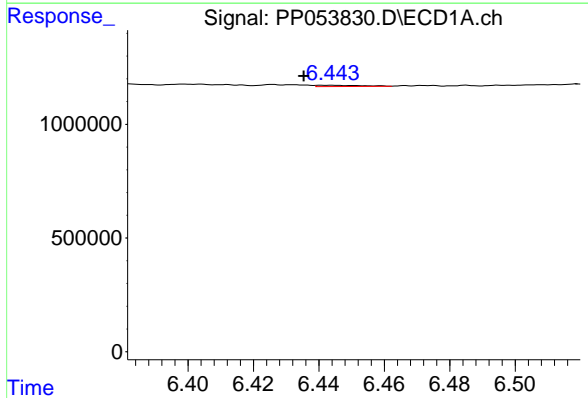
R.T.: 5.692 min
 Delta R.T.: -0.003 min
 Response: 54835
 Conc: 1.43 ng/ml

Instrument :
 ECD_P
 ClientSampleId :
 BU-03-121522



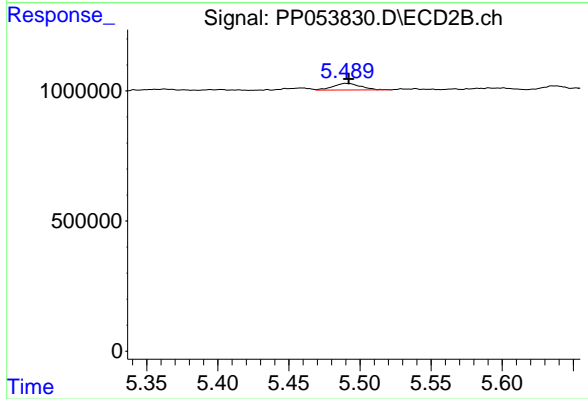
#19 AR-1242-4

R.T.: 4.991 min
 Delta R.T.: 0.025 min
 Response: 2189699
 Conc: 76.75 ng/ml



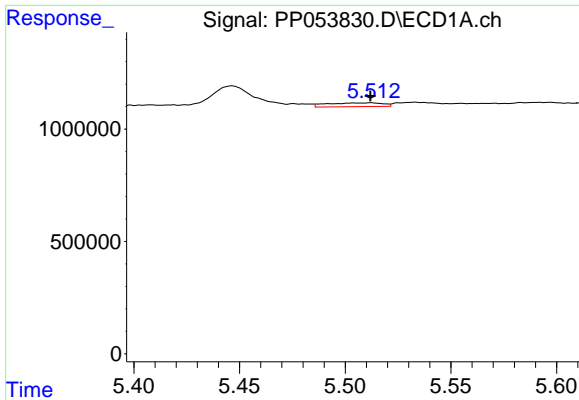
#20 AR-1242-5

R.T.: 6.443 min
 Delta R.T.: 0.008 min
 Response: 57837
 Conc: 1.42 ng/ml



#20 AR-1242-5

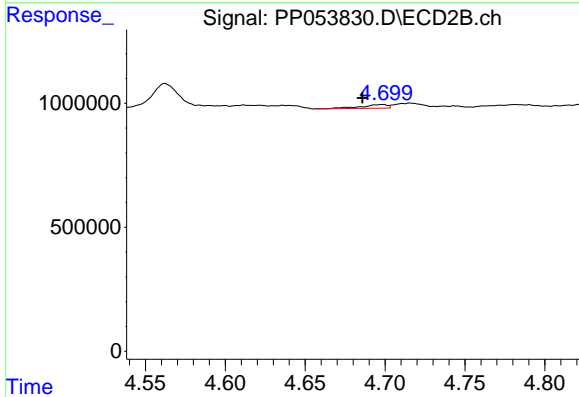
R.T.: 5.491 min
 Delta R.T.: -0.001 min
 Response: 343921
 Conc: 11.27 ng/ml



#21 AR-1248-1

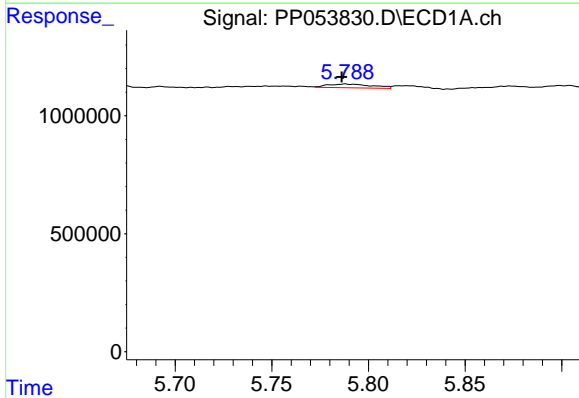
R.T.: 5.512 min
 Delta R.T.: 0.000 min
 Response: 313220
 Conc: 7.43 ng/ml

Instrument :
 ECD_P
 ClientSampleId :
 BU-03-121522



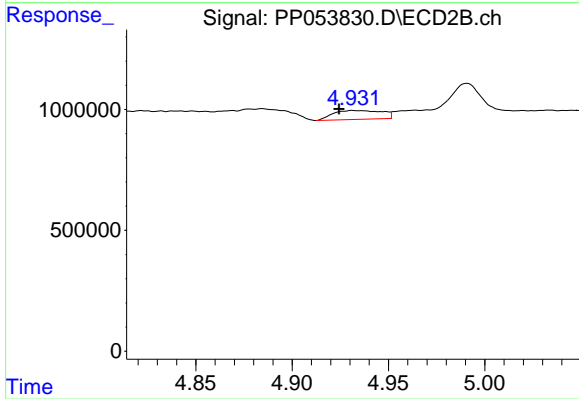
#21 AR-1248-1

R.T.: 4.698 min
 Delta R.T.: 0.012 min
 Response: 177330
 Conc: 6.23 ng/ml



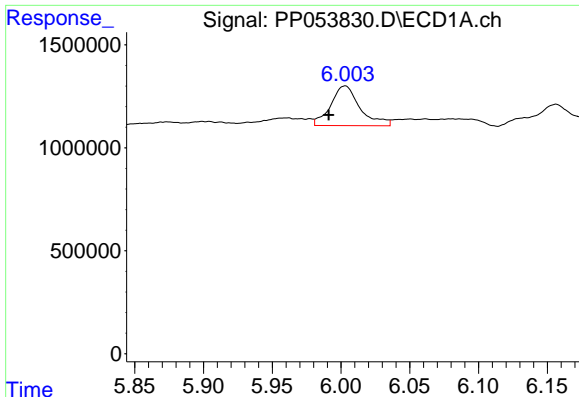
#22 AR-1248-2

R.T.: 5.788 min
 Delta R.T.: 0.002 min
 Response: 258900
 Conc: 4.10 ng/ml



#22 AR-1248-2

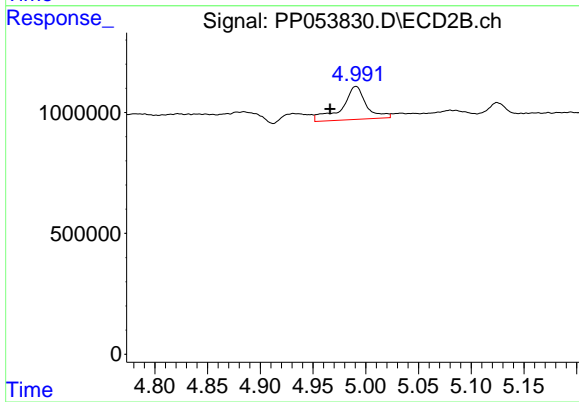
R.T.: 4.932 min
 Delta R.T.: 0.007 min
 Response: 649424
 Conc: 15.70 ng/ml



#23 AR-1248-3

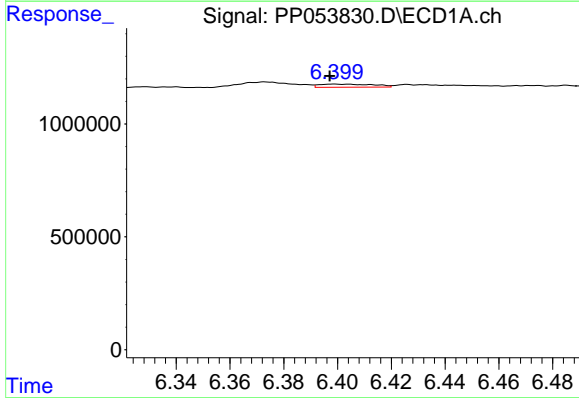
R.T.: 6.003 min
 Delta R.T.: 0.012 min
 Response: 2882886
 Conc: 41.16 ng/ml

Instrument :
 ECD_P
 ClientSampleId :
 BU-03-121522



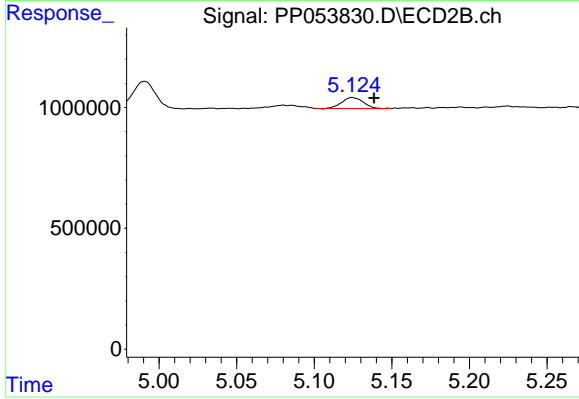
#23 AR-1248-3

R.T.: 4.991 min
 Delta R.T.: 0.025 min
 Response: 2189699
 Conc: 52.14 ng/ml



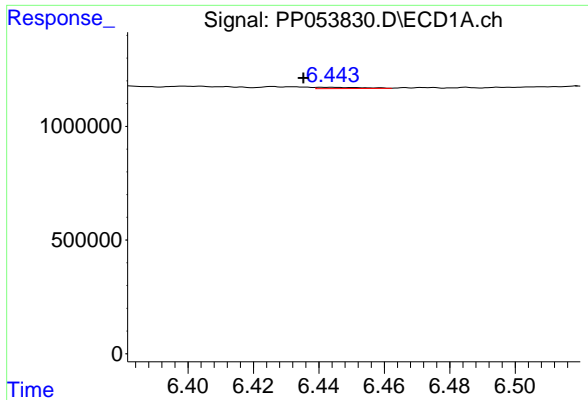
#24 AR-1248-4

R.T.: 6.399 min
 Delta R.T.: 0.002 min
 Response: 192639
 Conc: 2.73 ng/ml



#24 AR-1248-4

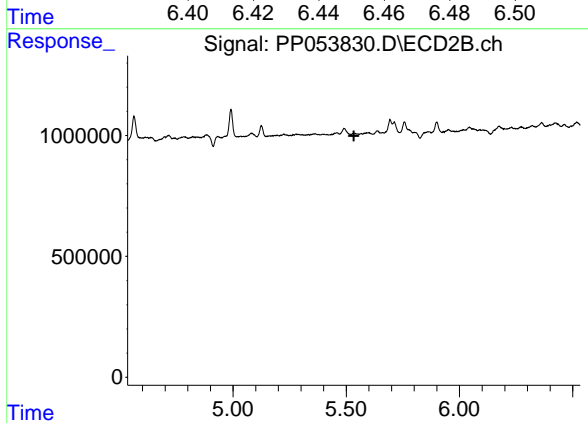
R.T.: 5.125 min
 Delta R.T.: -0.014 min
 Response: 434286
 Conc: 9.03 ng/ml



#25 AR-1248-5

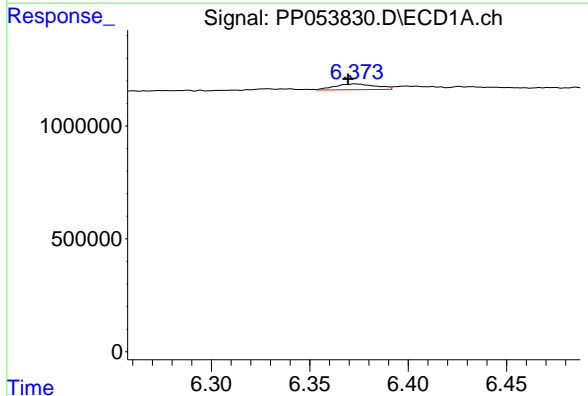
R.T.: 6.443 min
 Delta R.T.: 0.008 min
 Response: 57837
 Conc: 0.82 ng/ml

Instrument :
 ECD_P
 ClientSampleId :
 BU-03-121522



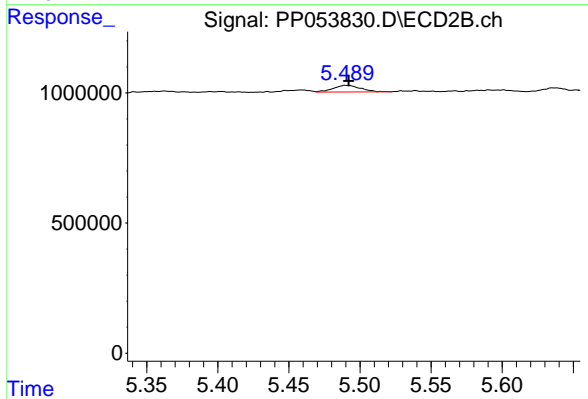
#25 AR-1248-5

R.T.: 0.000 min
 Exp R.T. : 5.533 min
 Response: 0
 Conc: N.D.



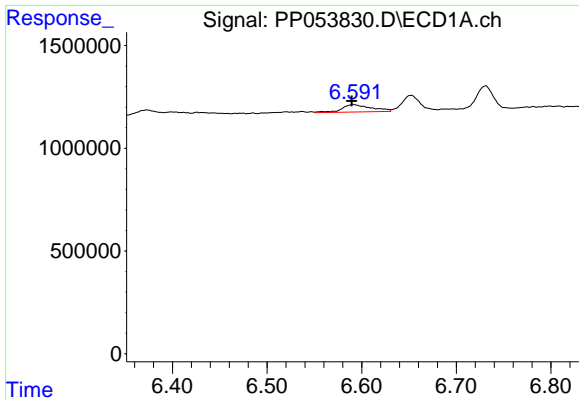
#26 AR-1254-1

R.T.: 6.373 min
 Delta R.T.: 0.004 min
 Response: 373280
 Conc: 4.82 ng/ml



#26 AR-1254-1

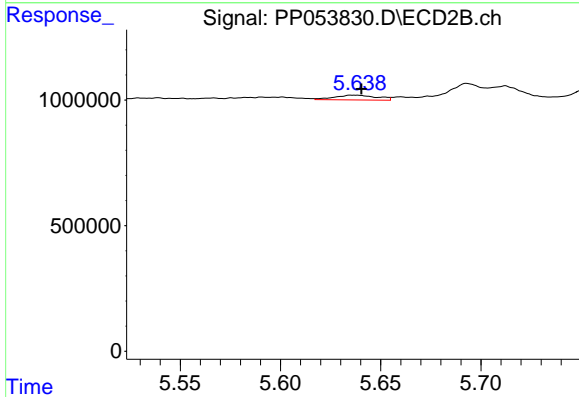
R.T.: 5.491 min
 Delta R.T.: -0.002 min
 Response: 343921
 Conc: 5.25 ng/ml



#27 AR-1254-2

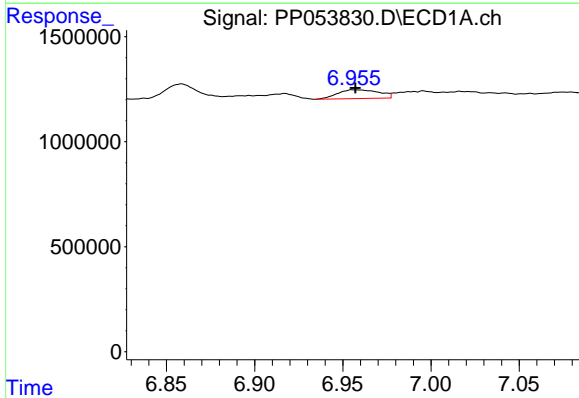
R.T.: 6.591 min
 Delta R.T.: 0.002 min
 Response: 783879
 Conc: 6.74 ng/ml

Instrument :
 ECD_P
 ClientSampleId :
 BU-03-121522



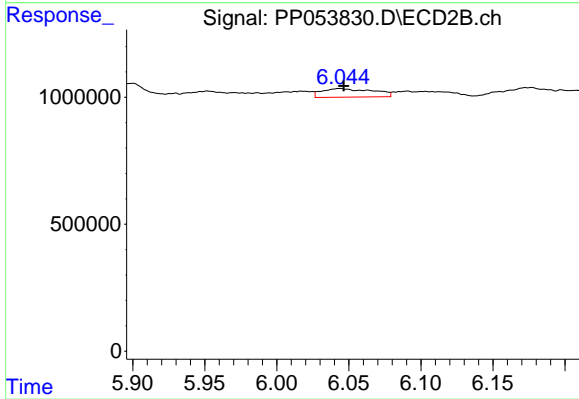
#27 AR-1254-2

R.T.: 5.637 min
 Delta R.T.: -0.004 min
 Response: 282501
 Conc: 4.84 ng/ml



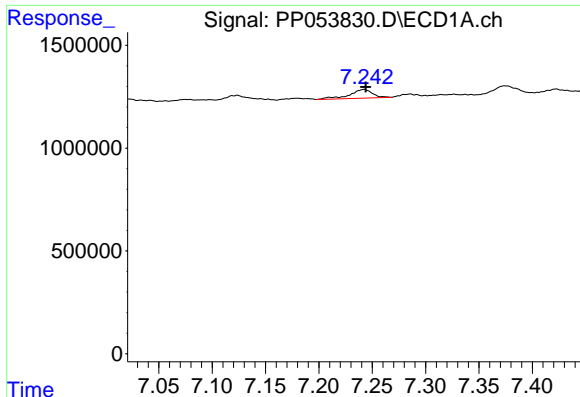
#28 AR-1254-3

R.T.: 6.956 min
 Delta R.T.: 0.000 min
 Response: 688038
 Conc: 5.87 ng/ml



#28 AR-1254-3

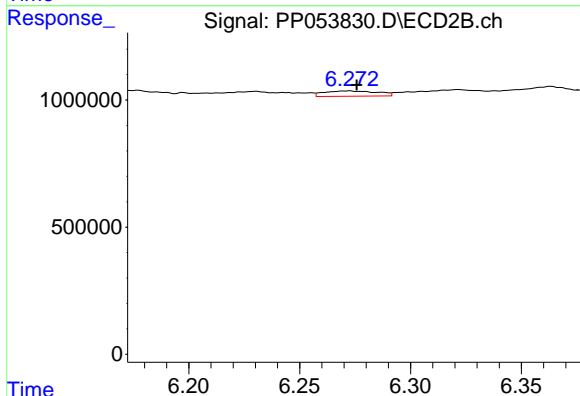
R.T.: 6.044 min
 Delta R.T.: -0.003 min
 Response: 833393
 Conc: 9.47 ng/ml



#29 AR-1254-4

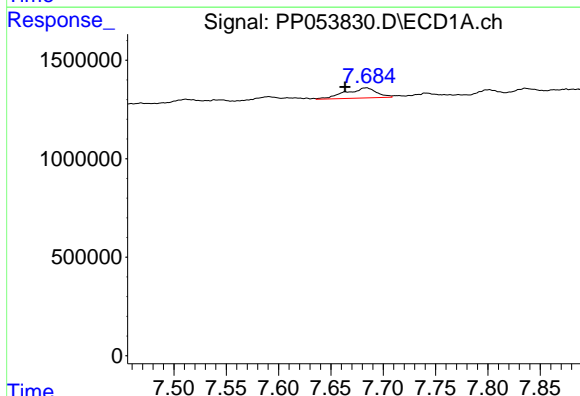
R.T.: 7.242 min
 Delta R.T.: -0.002 min
 Response: 633490
 Conc: 7.99 ng/ml

Instrument :
 ECD_P
 ClientSampleId :
 BU-03-121522



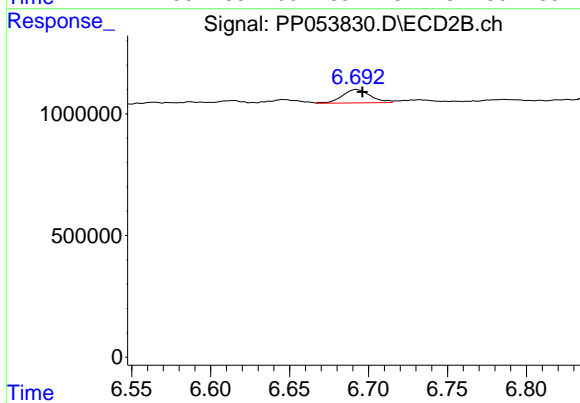
#29 AR-1254-4

R.T.: 6.272 min
 Delta R.T.: -0.004 min
 Response: 347459
 Conc: 7.58 ng/ml



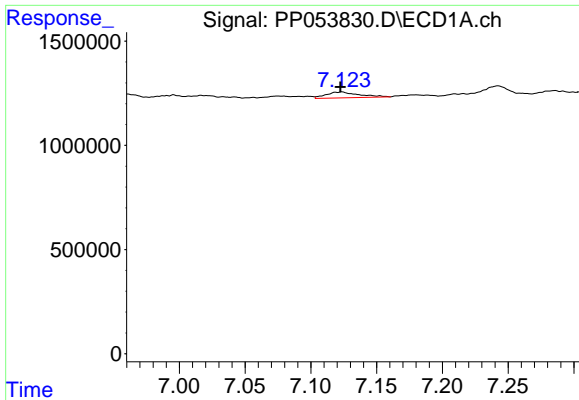
#30 AR-1254-5

R.T.: 7.684 min
 Delta R.T.: 0.020 min
 Response: 1057482
 Conc: 10.84 ng/ml



#30 AR-1254-5

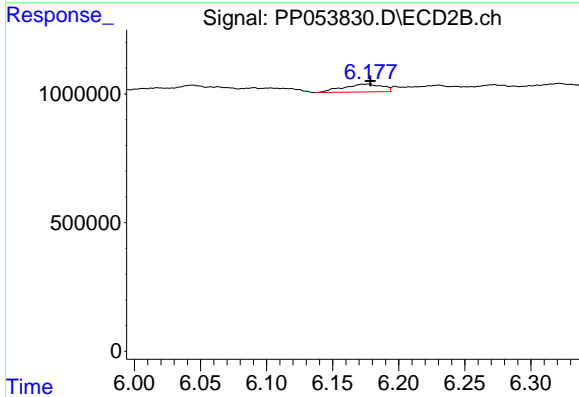
R.T.: 6.692 min
 Delta R.T.: -0.004 min
 Response: 688367
 Conc: 8.83 ng/ml



#31 AR-1260-1

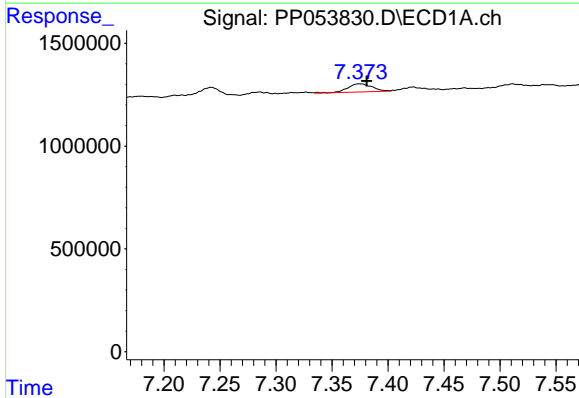
R.T.: 7.124 min
 Delta R.T.: 0.001 min
 Response: 514267
 Conc: 5.33 ng/ml

Instrument :
 ECD_P
 ClientSampleId :
 BU-03-121522



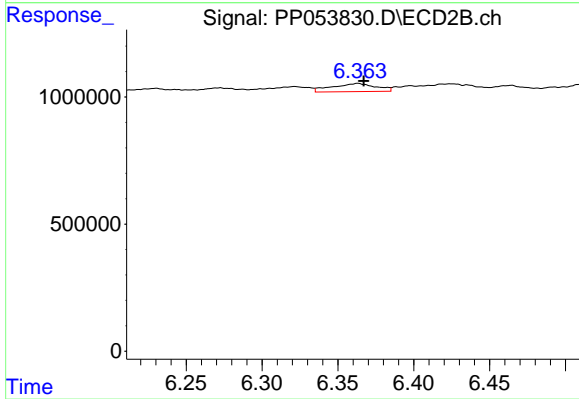
#31 AR-1260-1

R.T.: 6.177 min
 Delta R.T.: -0.002 min
 Response: 624290
 Conc: 9.57 ng/ml



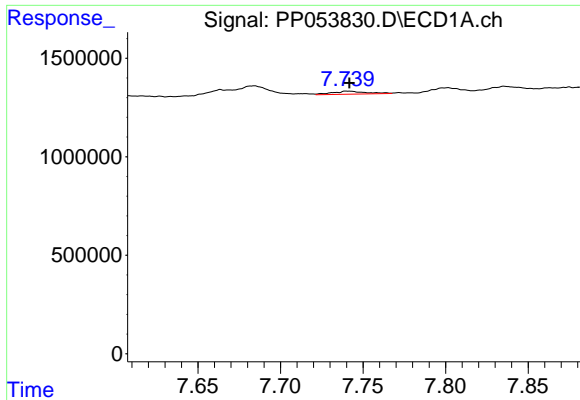
#32 AR-1260-2

R.T.: 7.375 min
 Delta R.T.: -0.006 min
 Response: 616045
 Conc: 5.58 ng/ml



#32 AR-1260-2

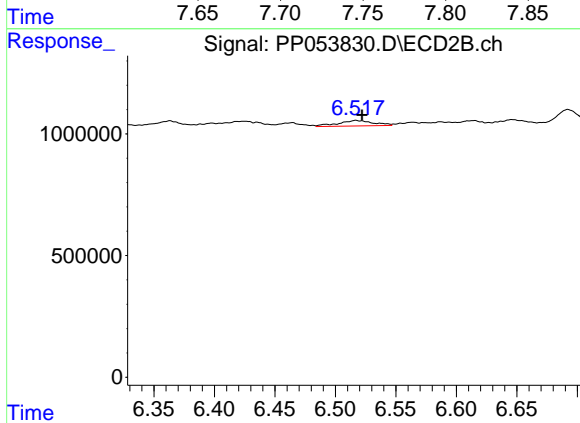
R.T.: 6.363 min
 Delta R.T.: -0.004 min
 Response: 641234
 Conc: 8.52 ng/ml



#33 AR-1260-3

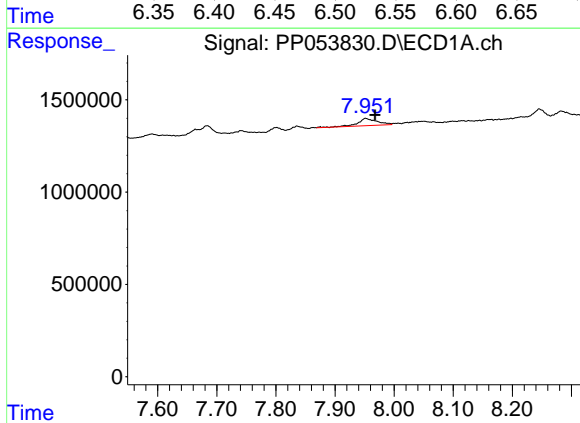
R.T.: 7.741 min
 Delta R.T.: 0.000 min
 Response: 221034
 Conc: 2.92 ng/ml

Instrument :
 ECD_P
 ClientSampleId :
 BU-03-121522



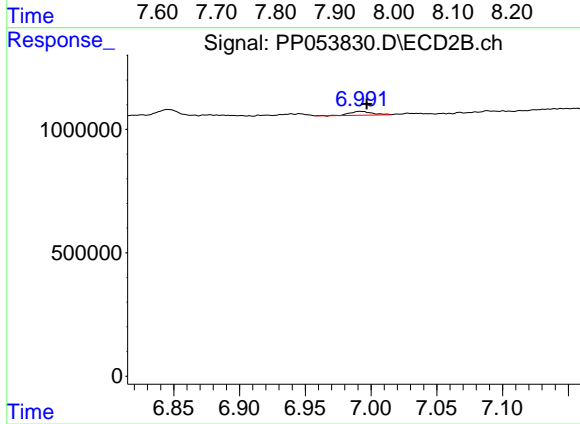
#33 AR-1260-3

R.T.: 6.517 min
 Delta R.T.: -0.005 min
 Response: 464653
 Conc: 6.41 ng/ml



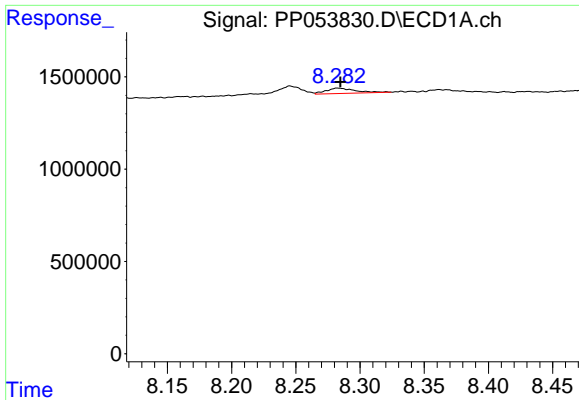
#34 AR-1260-4

R.T.: 7.952 min
 Delta R.T.: -0.015 min
 Response: 902487
 Conc: 9.62 ng/ml



#34 AR-1260-4

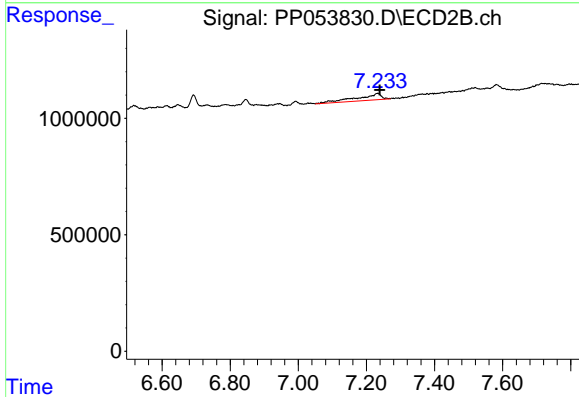
R.T.: 6.992 min
 Delta R.T.: -0.005 min
 Response: 186271
 Conc: 3.43 ng/ml



#35 AR-1260-5

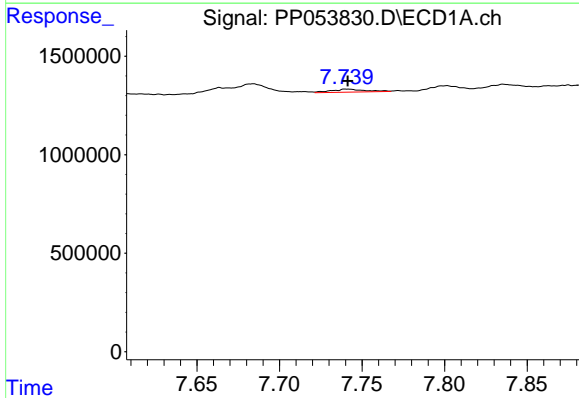
R.T.: 8.283 min
 Delta R.T.: -0.001 min
 Response: 447209
 Conc: 2.82 ng/ml

Instrument :
 ECD_P
 ClientSampleId :
 BU-03-121522



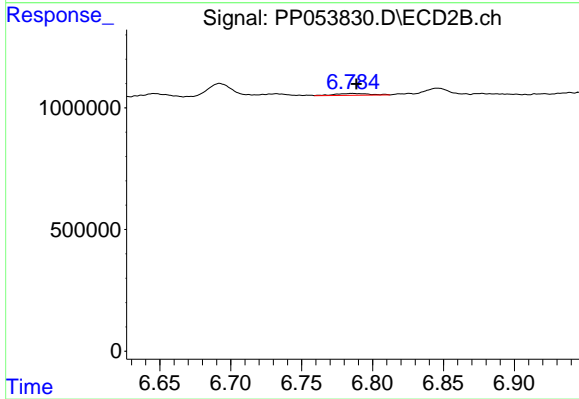
#35 AR-1260-5

R.T.: 7.234 min
 Delta R.T.: -0.005 min
 Response: 1371092
 Conc: 11.47 ng/ml



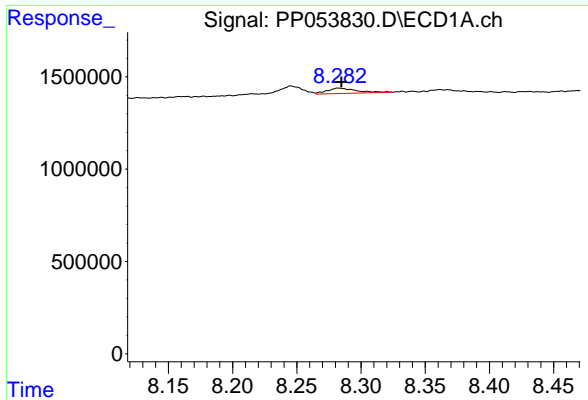
#36 AR-1262-1

R.T.: 7.741 min
 Delta R.T.: 0.000 min
 Response: 221034
 Conc: 1.85 ng/ml



#36 AR-1262-1

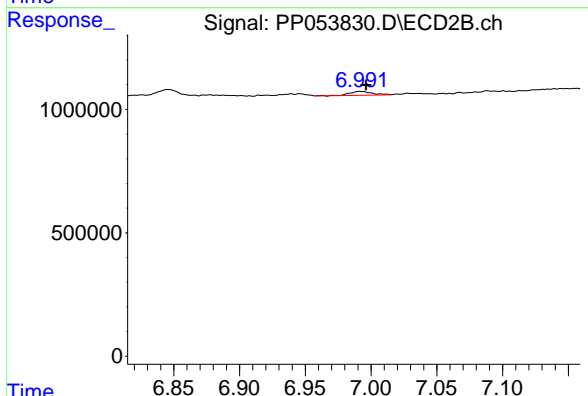
R.T.: 6.786 min
 Delta R.T.: -0.003 min
 Response: 128154
 Conc: 3.59 ng/ml



#37 AR-1262-2

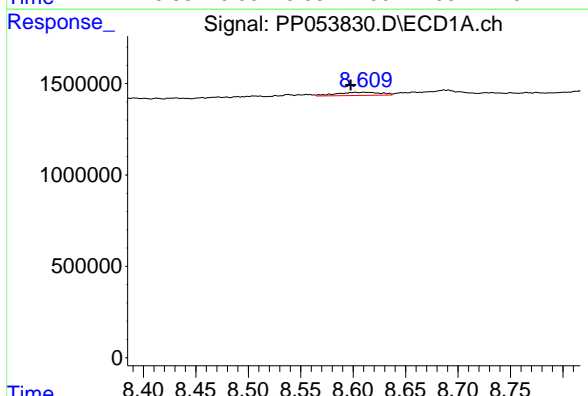
R.T.: 8.283 min
 Delta R.T.: -0.001 min
 Response: 447209
 Conc: 2.33 ng/ml

Instrument :
 ECD_P
 ClientSampleId :
 BU-03-121522



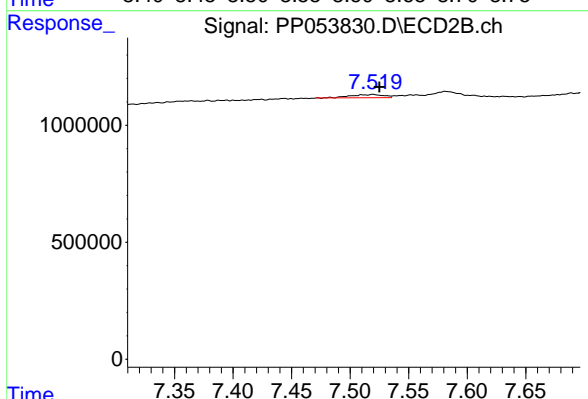
#37 AR-1262-2

R.T.: 6.992 min
 Delta R.T.: -0.004 min
 Response: 186271
 Conc: 2.40 ng/ml



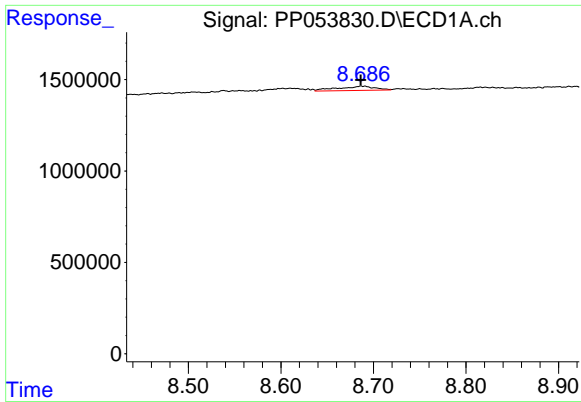
#38 AR-1262-3

R.T.: 8.602 min
 Delta R.T.: 0.005 min
 Response: 521393
 Conc: 3.76 ng/ml



#38 AR-1262-3

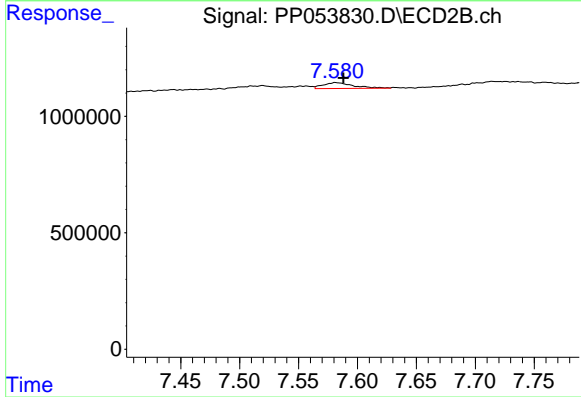
R.T.: 7.519 min
 Delta R.T.: -0.006 min
 Response: 266373
 Conc: 4.23 ng/ml



#39 AR-1262-4

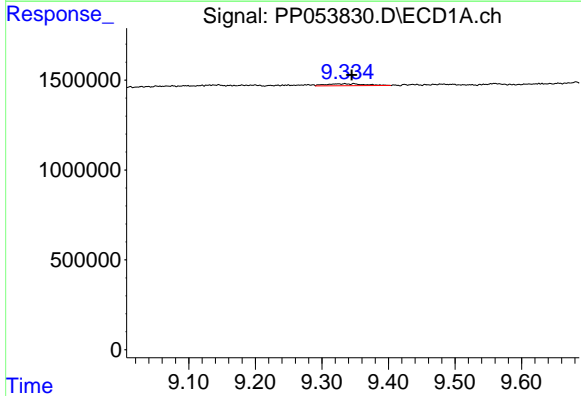
R.T.: 8.688 min
 Delta R.T.: 0.001 min
 Response: 670583
 Conc: 10.77 ng/ml

Instrument :
 ECD_P
 ClientSampleId :
 BU-03-121522



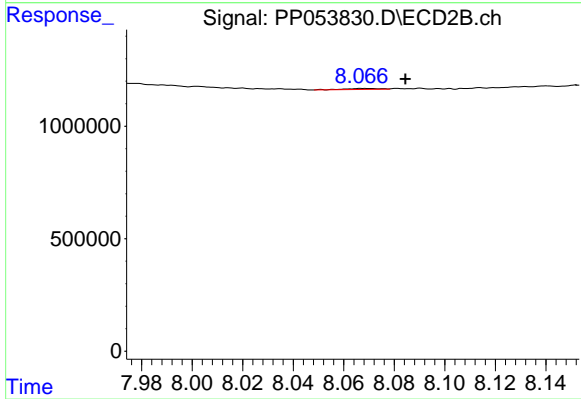
#39 AR-1262-4

R.T.: 7.582 min
 Delta R.T.: -0.007 min
 Response: 451260
 Conc: 3.95 ng/ml



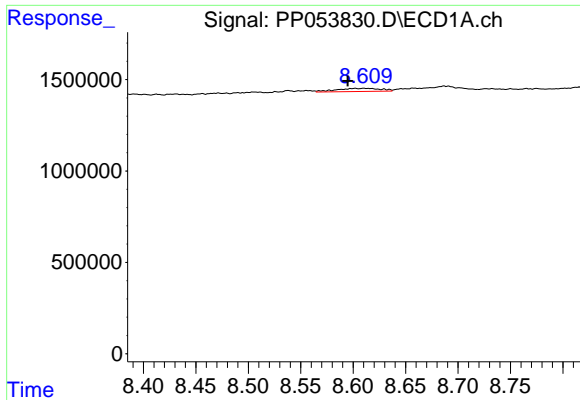
#40 AR-1262-5

R.T.: 9.335 min
 Delta R.T.: -0.010 min
 Response: 415753
 Conc: 5.88 ng/ml



#40 AR-1262-5

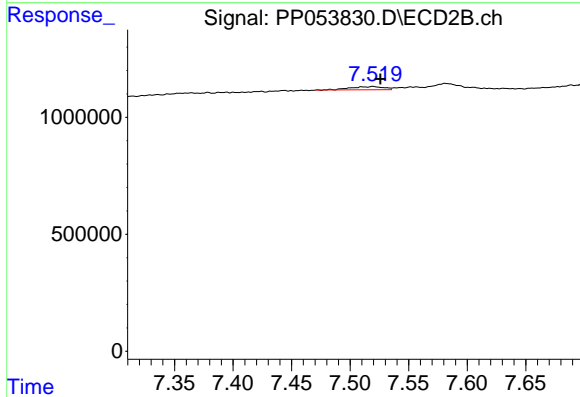
R.T.: 8.068 min
 Delta R.T.: -0.016 min
 Response: 42363
 Conc: 0.85 ng/ml



#41 AR-1268-1

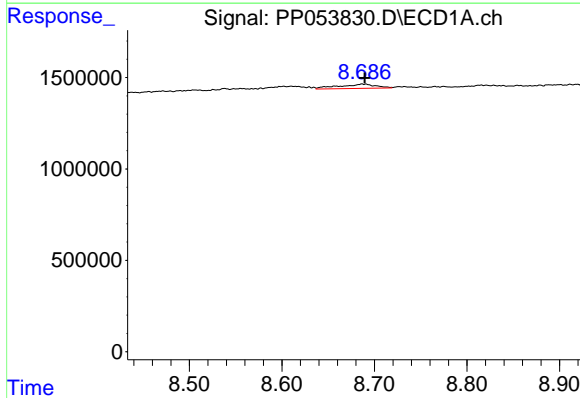
R.T.: 8.602 min
 Delta R.T.: 0.007 min
 Response: 521393
 Conc: 2.14 ng/ml

Instrument :
 ECD_P
 ClientSampleId :
 BU-03-121522



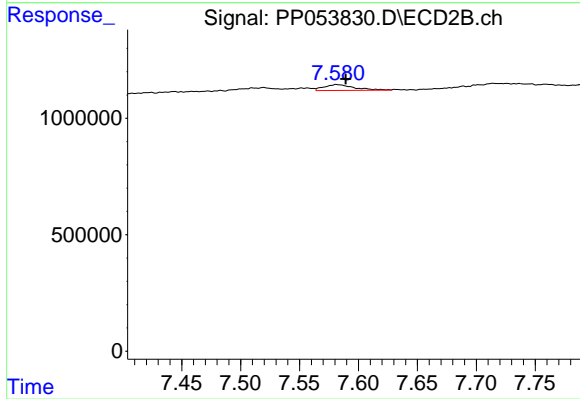
#41 AR-1268-1

R.T.: 7.519 min
 Delta R.T.: -0.006 min
 Response: 266373
 Conc: 1.47 ng/ml



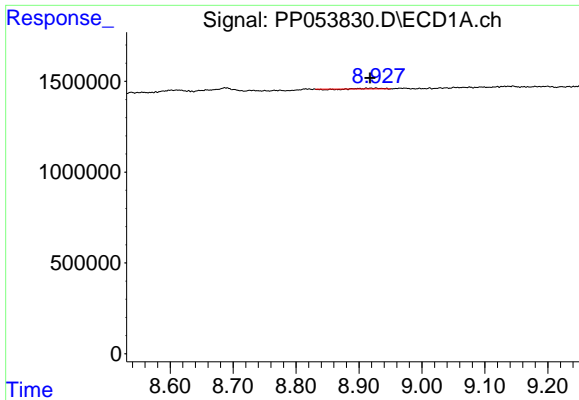
#42 AR-1268-2

R.T.: 8.688 min
 Delta R.T.: -0.002 min
 Response: 670583
 Conc: 2.95 ng/ml



#42 AR-1268-2

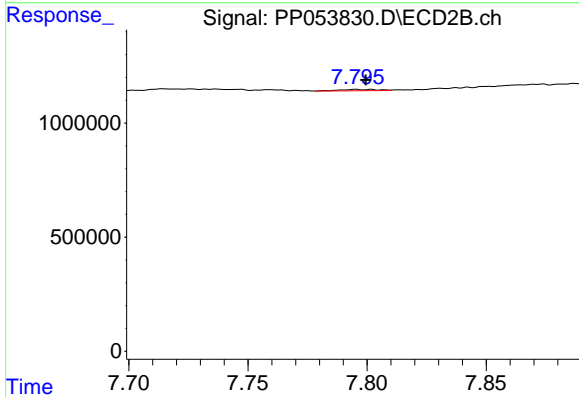
R.T.: 7.582 min
 Delta R.T.: -0.008 min
 Response: 451260
 Conc: 2.64 ng/ml



#43 AR-1268-3

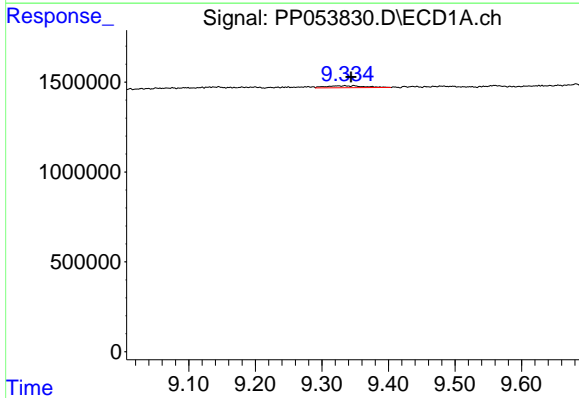
R.T.: 8.927 min
 Delta R.T.: 0.010 min
 Response: 12220
 Conc: 0.06 ng/ml

Instrument :
 ECD_P
 ClientSampleId :
 BU-03-121522



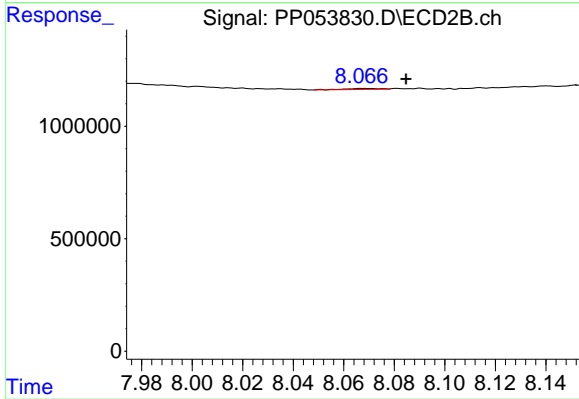
#43 AR-1268-3

R.T.: 7.795 min
 Delta R.T.: -0.004 min
 Response: 63419
 Conc: 0.43 ng/ml



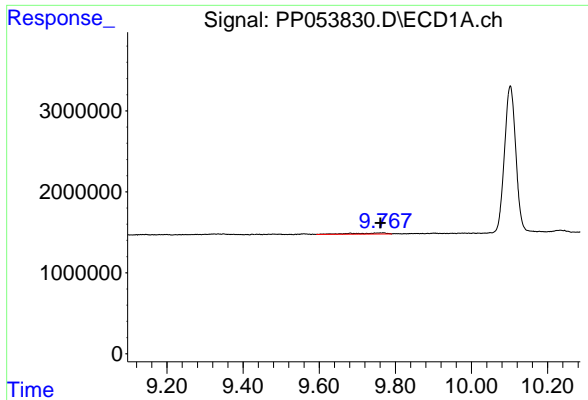
#44 AR-1268-4

R.T.: 9.335 min
 Delta R.T.: -0.009 min
 Response: 415753
 Conc: 5.40 ng/ml



#44 AR-1268-4

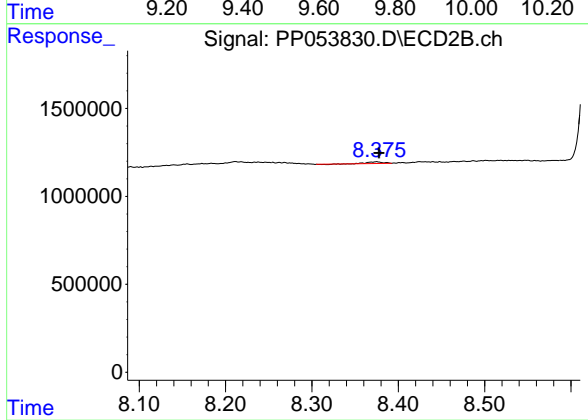
R.T.: 8.068 min
 Delta R.T.: -0.017 min
 Response: 42363
 Conc: 0.76 ng/ml



#45 AR-1268-5

R.T.: 9.768 min
Delta R.T.: 0.008 min
Response: 899888
Conc: 1.53 ng/ml

Instrument :
ECD_P
ClientSampleId :
BU-03-121522



#45 AR-1268-5

R.T.: 8.375 min
Delta R.T.: -0.003 min
Response: 107665
Conc: 0.23 ng/ml