

Data Path : Z:\pestpcbsrv\HPCHEM1\ECD\_P\Data\PP121922\  
 Data File : PP053843.D  
 Signal(s) : Signal #1: ECD1A.ch Signal #2: ECD2B.ch  
 Acq On : 19 Dec 2022 18:51  
 Operator : YP\AJ  
 Sample : PB149734BL  
 Misc :  
 ALS Vial : 22 Sample Multiplier: 1

Instrument :  
 ECD\_P  
 ClientSampleId :

Integration File signal 1: autoint1.e  
 Integration File signal 2: autoint2.e  
 Quant Time: Dec 20 03:26:21 2022  
 Quant Method : Z:\pestpcbsrv\HPCHEM1\ECD\_P\methods\PP121322.M  
 Quant Title : GC EXTRACTABLES  
 QLast Update : Wed Dec 14 05:38:40 2022  
 Response via : Initial Calibration  
 Integrator: ChemStation

Volume Inj. : 2 µl  
 Signal #1 Phase : ZB-MR1 Signal #2 Phase: ZB-MR2  
 Signal #1 Info : 30Mx0.32mmx 0.50µ Signal #2 Info : 30M x 0.32mm x 0.25µm

Compound	RT#1	RT#2	Resp#1	Resp#2	ng/ml	ng/ml
System Monitoring Compounds						
1) SA Tetrachlo...	4.339	3.591	43150432	29763648	20.550	19.058
2) SA Decachlor...	10.100	8.626	36790416	29660784	21.670	21.236

Compound	RT#1	RT#2	Resp#1	Resp#2	ng/ml	ng/ml
Target Compounds						
3) L1 AR-1016-1	5.507	4.696	48783	153628	0.719	3.345 #
4) L1 AR-1016-2	5.537	4.696	94373	153628	0.947	2.452 #
5) L1 AR-1016-3	5.585	0.000	359102	0	5.682	N.D. #
6) L1 AR-1016-4	5.697	4.934	48249	68783	0.974	2.308 #
7) L1 AR-1016-5	5.987	0.000	101071	0	1.920	N.D. #
8) L2 AR-1221-1	4.545	0.000	560612	0	21.761	N.D. #
9) L2 AR-1221-2	4.646	3.891	772297	543838	39.668	37.205
10) L2 AR-1221-3	4.711	0.000	198461	0	3.415	N.D. #
11) L3 AR-1232-1	4.711	0.000	198461	0	4.431	N.D. #
12) L3 AR-1232-2	5.242	4.696	31205	153628	1.213	5.147 #
13) L3 AR-1232-3	5.537	0.000	94373	0	2.011	N.D. #
14) L3 AR-1232-4	5.697	0.000	48249	0	2.036	N.D. #
15) L3 AR-1232-5	5.782	0.000	174157	0	9.443	N.D. #
16) L4 AR-1242-1	5.507	4.696	48783	153628	0.931	4.338 #
17) L4 AR-1242-2	5.537	4.696	94373	153628	1.239	3.198 #
18) L4 AR-1242-3	5.585	0.000	359102	0	7.329	N.D. #
19) L4 AR-1242-4	5.697	0.000	48249	0	1.257	N.D. #
20) L4 AR-1242-5	6.428	5.519f	73449	64452	1.801	2.112
21) L5 AR-1248-1	5.507	4.696	48783	153628	1.157	5.400 #
22) L5 AR-1248-2	5.782	4.934	174157	68783	2.756	1.663 #
23) L5 AR-1248-3	5.987	0.000	101071	0	1.443	N.D. #
24) L5 AR-1248-4	6.394	0.000	49419	0	0.701	N.D. #
25) L5 AR-1248-5	6.428	5.531	73449	38355	1.042	1.021
26) L6 AR-1254-1	6.385f	5.519f	168827	64452	2.179	0.984 #
27) L6 AR-1254-2	6.590	5.638	59817	94147	0.514	1.614 #
28) L6 AR-1254-3	6.956	6.027f	2348433	91315	20.050	1.038 #
29) L6 AR-1254-4	7.249	6.293f	145256	104222	1.832	2.275
30) L6 AR-1254-5	7.664	6.711f	95295	129767	0.977	1.665 #
31) L7 AR-1260-1	7.138f	6.171	125035	39124	1.295	0.600 #
32) L7 AR-1260-2	7.386	6.384f	1599375	74433	14.478	0.988 #
33) L7 AR-1260-3	0.000	6.529	0	71297	N.D.	0.984 #
34) L7 AR-1260-4	7.987f	0.000	652132	0	6.948	N.D. #
35) L7 AR-1260-5	8.304f	7.223f	392228	71720	2.474	0.600 #
37) L8 AR-1262-2	8.304f	0.000	392228	0	2.045	N.D. #
38) L8 AR-1262-3	8.581f	7.512	120993	119824	0.873	1.902 #
39) L8 AR-1262-4	8.686	0.000	445223	0	7.154	N.D. #
40) L8 AR-1262-5	9.349	0.000	77571	0	1.098	N.D. #
41) L9 AR-1268-1	8.581	7.512	120993	119824	0.496	0.662 #
42) L9 AR-1268-2	8.686	0.000	445223	0	1.959	N.D. #

Data Path : Z:\pestpcbsrv\HPCHEM1\ECD\_P\Data\PP121922\  
 Data File : PP053843.D  
 Signal(s) : Signal #1: ECD1A.ch Signal #2: ECD2B.ch  
 Acq On : 19 Dec 2022 18:51  
 Operator : YP\AJ  
 Sample : PB149734BL  
 Misc :  
 ALS Vial : 22 Sample Multiplier: 1

Instrument :  
 ECD\_P  
 ClientSampleId :

Integration File signal 1: autoint1.e  
 Integration File signal 2: autoint2.e  
 Quant Time: Dec 20 03:26:21 2022  
 Quant Method : Z:\pestpcbsrv\HPCHEM1\ECD\_P\methods\PP121322.M  
 Quant Title : GC EXTRACTABLES  
 QLast Update : Wed Dec 14 05:38:40 2022  
 Response via : Initial Calibration  
 Integrator: ChemStation

Volume Inj. : 2 µl  
 Signal #1 Phase : ZB-MR1 Signal #2 Phase: ZB-MR2  
 Signal #1 Info : 30Mx0.32mmx 0.50µ Signal #2 Info : 30M x 0.32mm x 0.25µm

	Compound	RT#1	RT#2	Resp#1	Resp#2	ng/ml	ng/ml
43)	L9 AR-1268-3	8.915	0.000	45649	0	0.238	N.D. #
44)	L9 AR-1268-4	9.349	0.000	77571	0	1.008	N.D. #
45)	L9 AR-1268-5	9.759	8.371	268551	21848	0.457	0.046 #

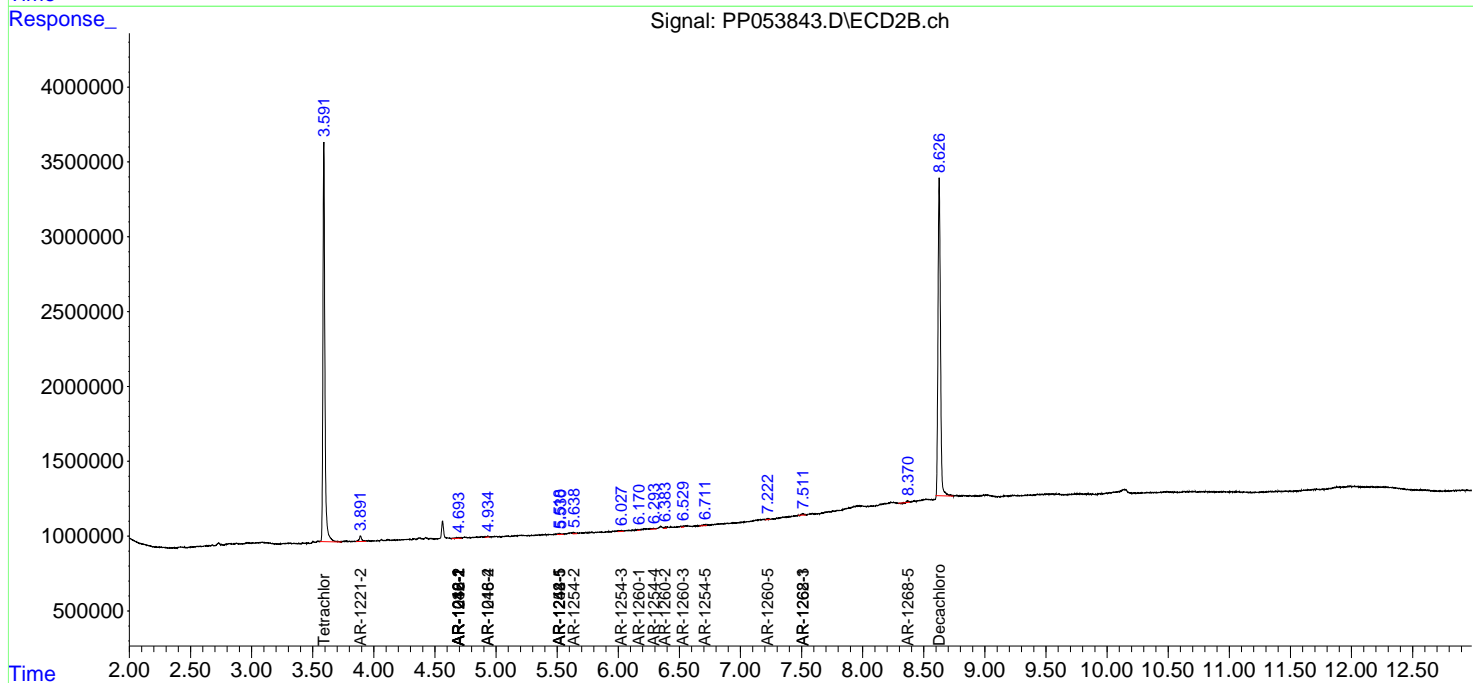
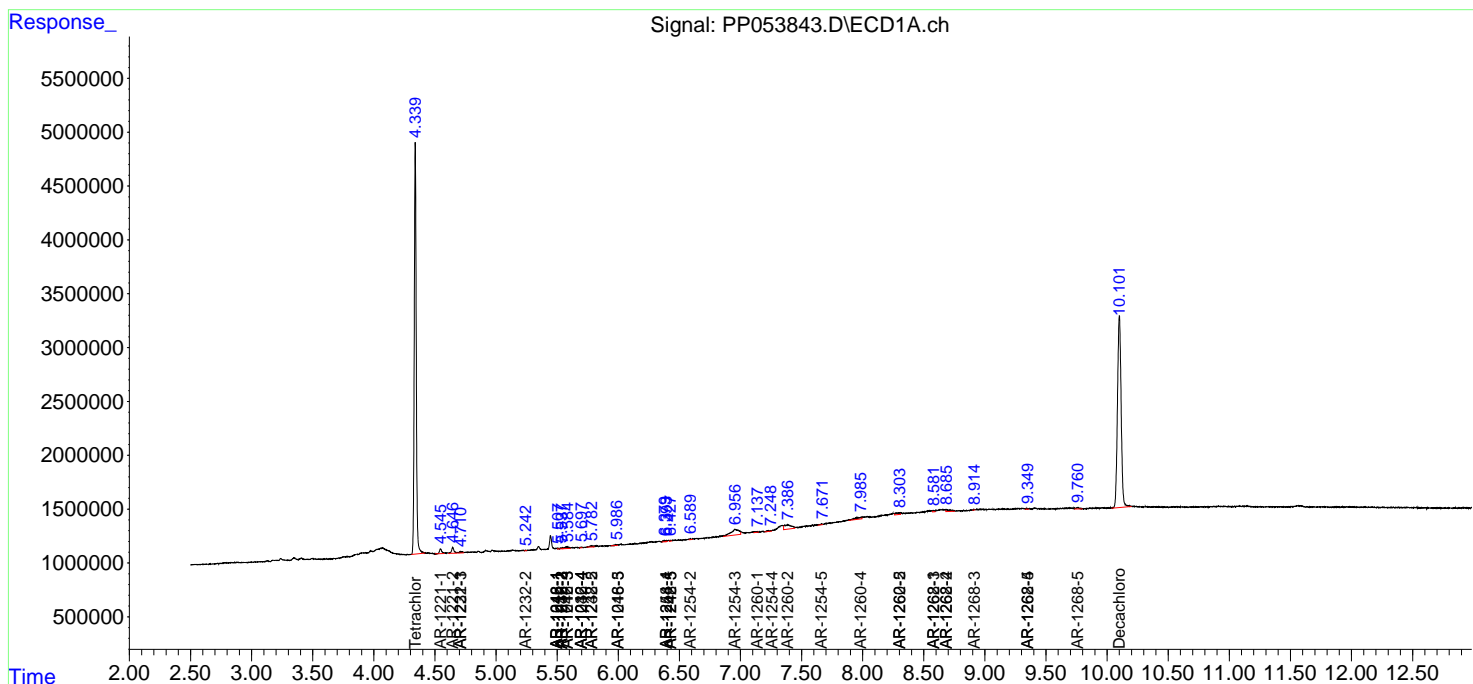
(f)=RT Delta > 1/2 Window (#)=Amounts differ by > 25% (m)=manual int.

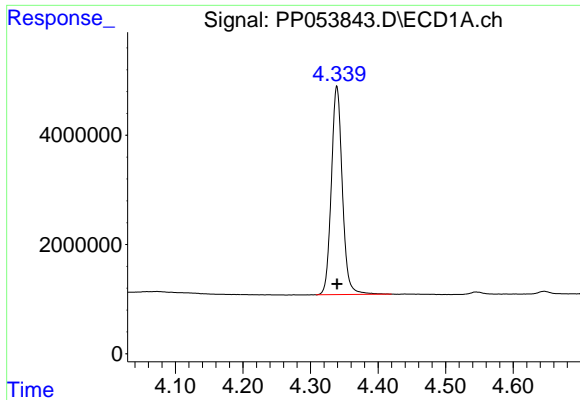
Data Path : Z:\pestpcbsrv\HPCHEM1\ECD\_P\Data\PP121922\  
 Data File : PP053843.D  
 Signal(s) : Signal #1: ECD1A.ch Signal #2: ECD2B.ch  
 Acq On : 19 Dec 2022 18:51  
 Operator : YP\AJ  
 Sample : PB149734BL  
 Misc :  
 ALS Vial : 22 Sample Multiplier: 1

Instrument :  
 ECD\_P  
 ClientSampleId :

Integration File signal 1: autoint1.e  
 Integration File signal 2: autoint2.e  
 Quant Time: Dec 20 03:26:21 2022  
 Quant Method : Z:\pestpcbsrv\HPCHEM1\ECD\_P\methods\PP121322.M  
 Quant Title : GC EXTRACTABLES  
 QLast Update : Wed Dec 14 05:38:40 2022  
 Response via : Initial Calibration  
 Integrator: ChemStation

Volume Inj. : 2 µl  
 Signal #1 Phase : ZB-MR1 Signal #2 Phase: ZB-MR2  
 Signal #1 Info : 30Mx0.32mmx 0.50µ Signal #2 Info : 30M x 0.32mm x 0.25µm

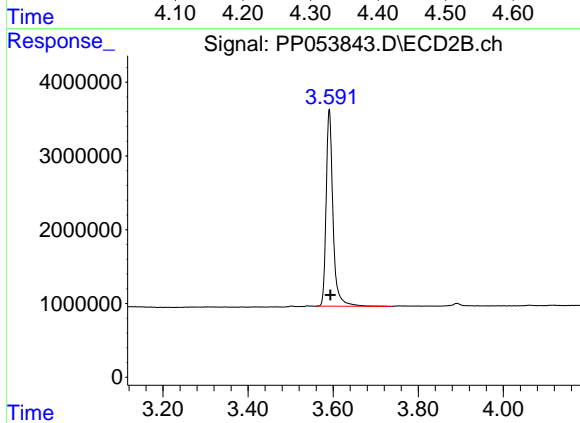




#1 Tetrachloro-m-xylene

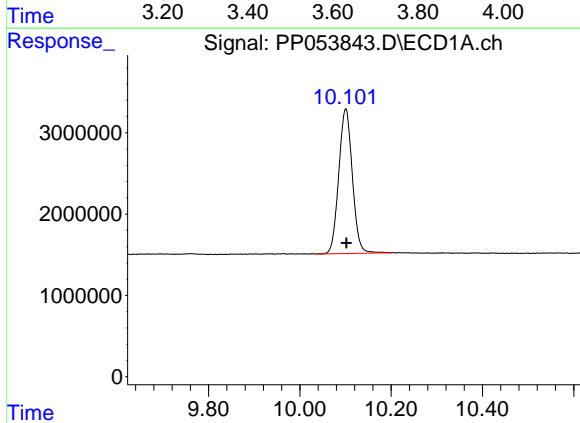
R.T.: 4.339 min  
 Delta R.T.: 0.000 min  
 Response: 43150432  
 Conc: 20.55 ng/ml

Instrument :  
 ECD\_P  
 ClientSampleId :



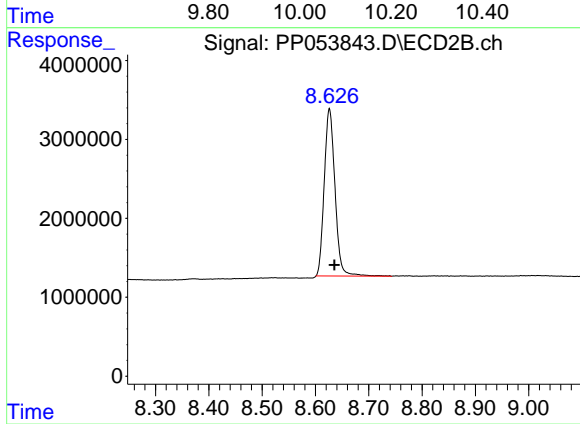
#1 Tetrachloro-m-xylene

R.T.: 3.591 min  
 Delta R.T.: -0.003 min  
 Response: 29763648  
 Conc: 19.06 ng/ml



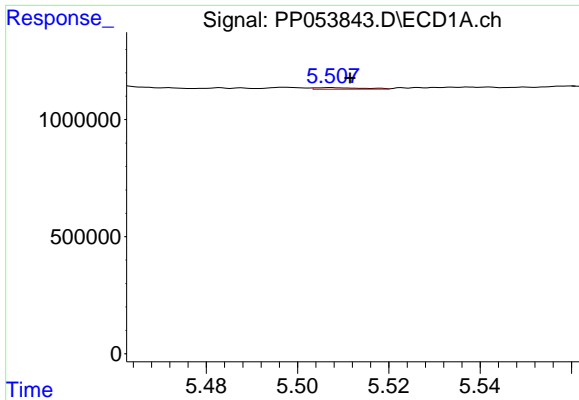
#2 Decachlorobiphenyl

R.T.: 10.100 min  
 Delta R.T.: -0.002 min  
 Response: 36790416  
 Conc: 21.67 ng/ml



#2 Decachlorobiphenyl

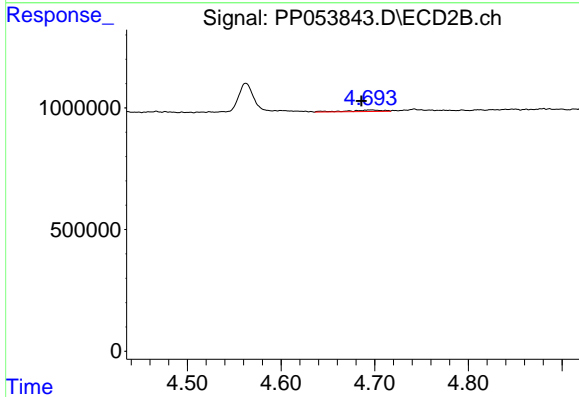
R.T.: 8.626 min  
 Delta R.T.: -0.009 min  
 Response: 29660784  
 Conc: 21.24 ng/ml



#3 AR-1016-1

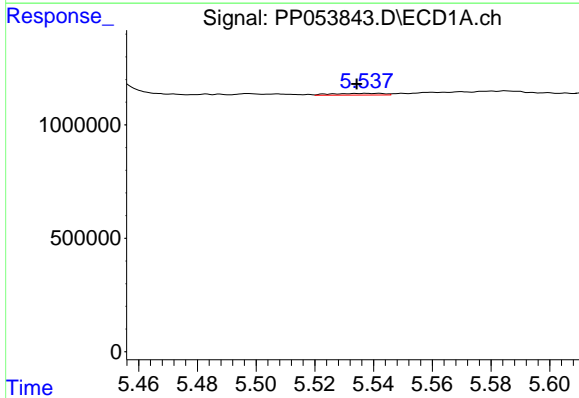
R.T.: 5.507 min  
 Delta R.T.: -0.004 min  
 Response: 48783  
 Conc: 0.72 ng/ml

Instrument :  
 ECD\_P  
 ClientSampleId :



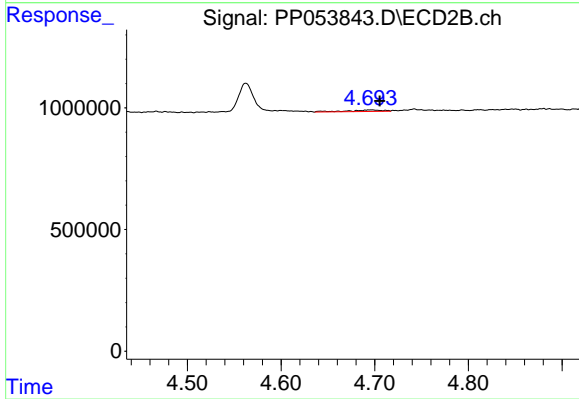
#3 AR-1016-1

R.T.: 4.696 min  
 Delta R.T.: 0.010 min  
 Response: 153628  
 Conc: 3.35 ng/ml



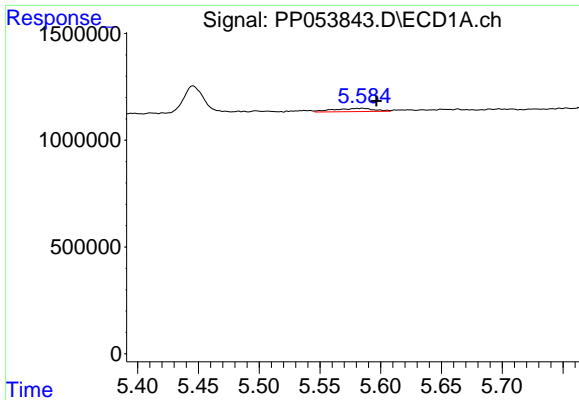
#4 AR-1016-2

R.T.: 5.537 min  
 Delta R.T.: 0.003 min  
 Response: 94373  
 Conc: 0.95 ng/ml



#4 AR-1016-2

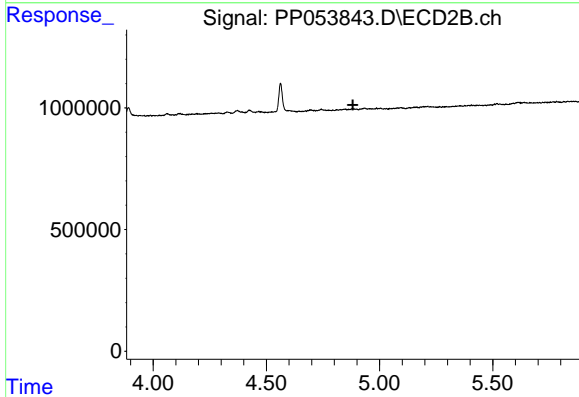
R.T.: 4.696 min  
 Delta R.T.: -0.009 min  
 Response: 153628  
 Conc: 2.45 ng/ml



#5 AR-1016-3

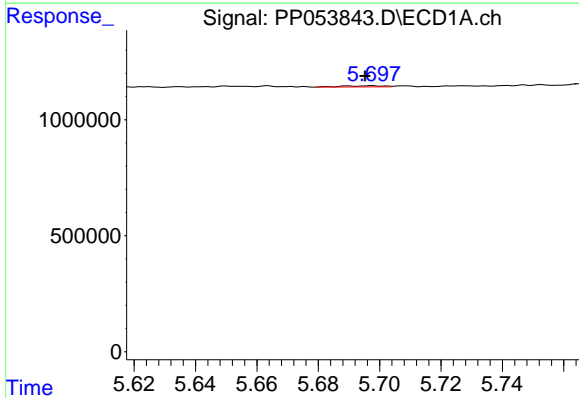
R.T.: 5.585 min  
 Delta R.T.: -0.011 min  
 Response: 359102  
 Conc: 5.68 ng/ml

Instrument :  
 ECD\_P  
 ClientSampleId :



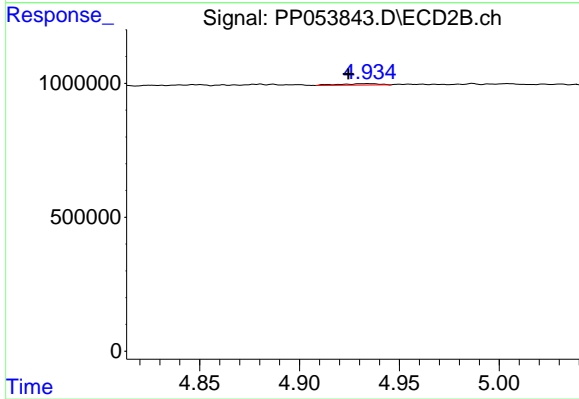
#5 AR-1016-3

R.T.: 0.000 min  
 Exp R.T. : 4.882 min  
 Response: 0  
 Conc: N.D.



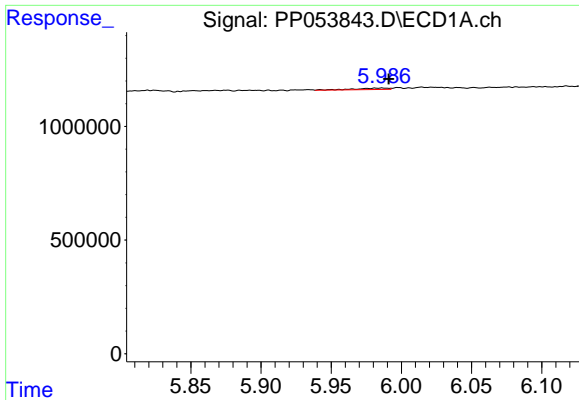
#6 AR-1016-4

R.T.: 5.697 min  
 Delta R.T.: 0.002 min  
 Response: 48249  
 Conc: 0.97 ng/ml



#6 AR-1016-4

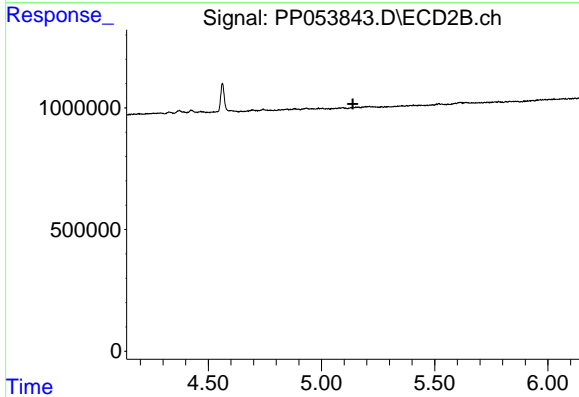
R.T.: 4.934 min  
 Delta R.T.: 0.010 min  
 Response: 68783  
 Conc: 2.31 ng/ml



#7 AR-1016-5

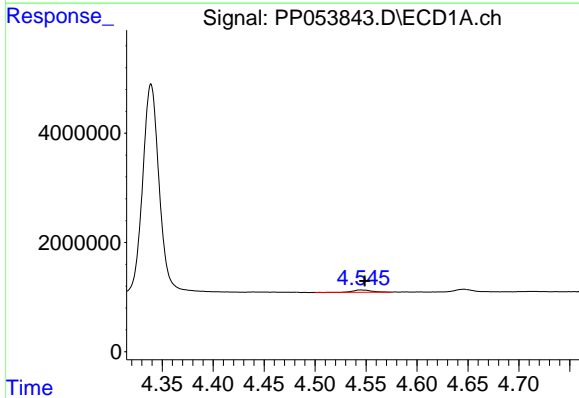
R.T.: 5.987 min  
 Delta R.T.: -0.004 min  
 Response: 101071  
 Conc: 1.92 ng/ml

Instrument :  
 ECD\_P  
 ClientSampleId :



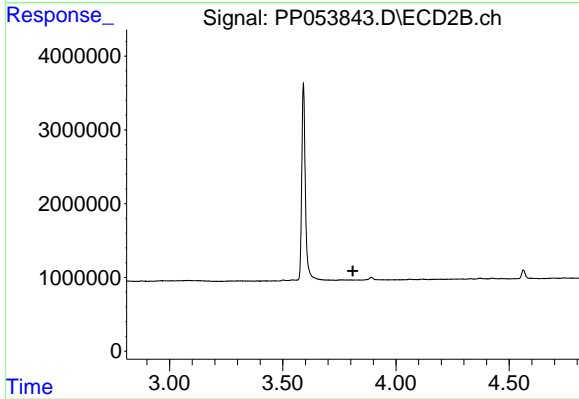
#7 AR-1016-5

R.T.: 0.000 min  
 Exp R.T. : 5.139 min  
 Response: 0  
 Conc: N.D.



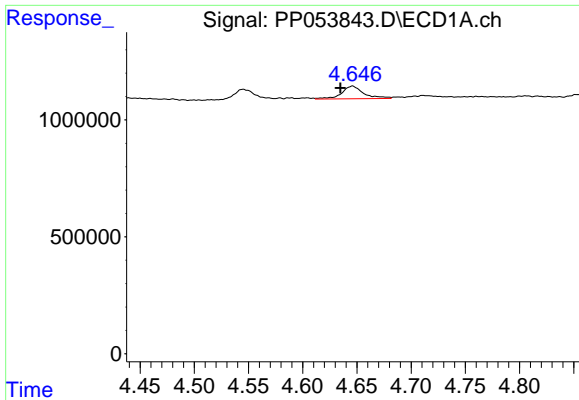
#8 AR-1221-1

R.T.: 4.545 min  
 Delta R.T.: -0.004 min  
 Response: 560612  
 Conc: 21.76 ng/ml



#8 AR-1221-1

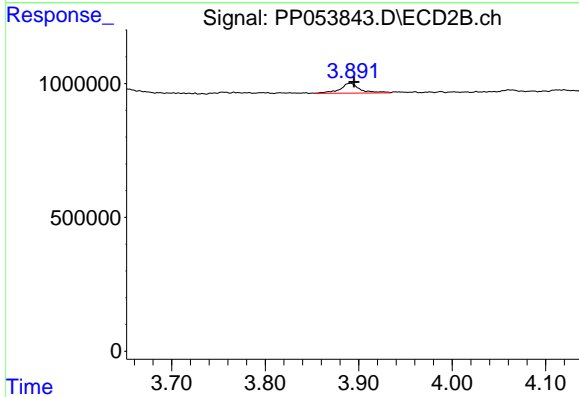
R.T.: 0.000 min  
 Exp R.T. : 3.810 min  
 Response: 0  
 Conc: N.D.



#9 AR-1221-2

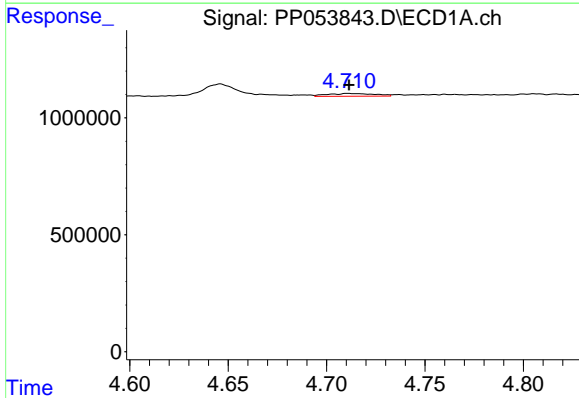
R.T.: 4.646 min  
 Delta R.T.: 0.011 min  
 Response: 772297  
 Conc: 39.67 ng/ml

Instrument :  
 ECD\_P  
 ClientSampleId :



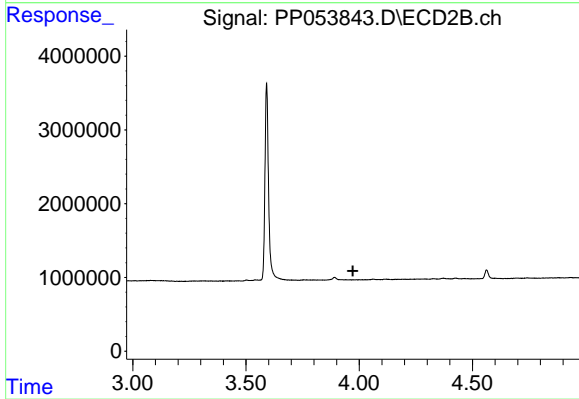
#9 AR-1221-2

R.T.: 3.891 min  
 Delta R.T.: -0.004 min  
 Response: 543838  
 Conc: 37.20 ng/ml



#10 AR-1221-3

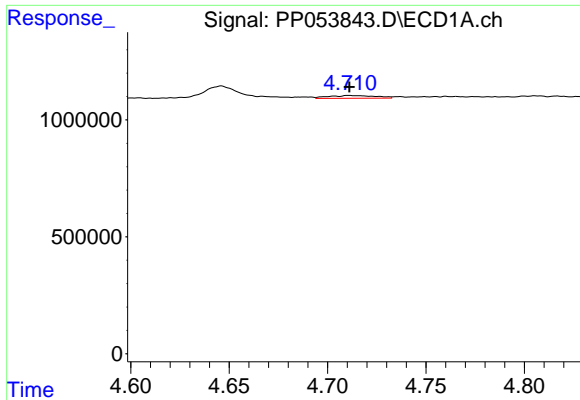
R.T.: 4.711 min  
 Delta R.T.: 0.000 min  
 Response: 198461  
 Conc: 3.41 ng/ml



#10 AR-1221-3

R.T.: 0.000 min  
 Exp R.T. : 3.972 min  
 Response: 0  
 Conc: N.D.

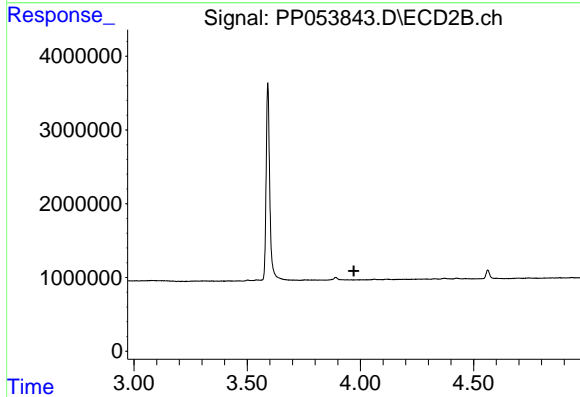




#11 AR-1232-1

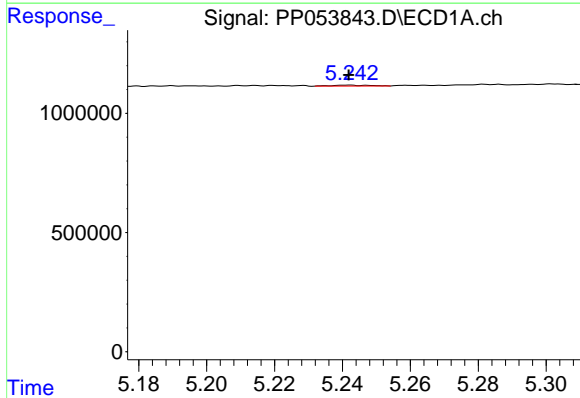
R.T.: 4.711 min  
 Delta R.T.: 0.000 min  
 Response: 198461  
 Conc: 4.43 ng/ml

Instrument :  
 ECD\_P  
 ClientSampleId :



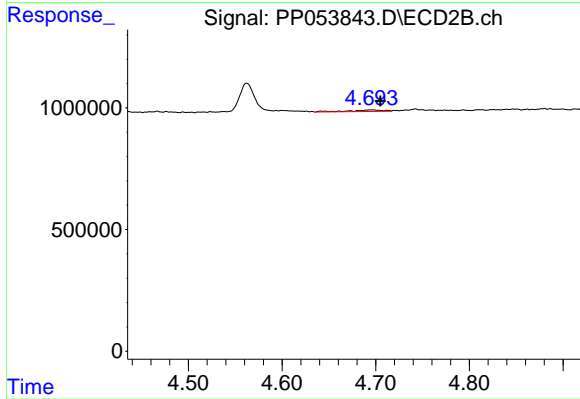
#11 AR-1232-1

R.T.: 0.000 min  
 Exp R.T. : 3.971 min  
 Response: 0  
 Conc: N.D.



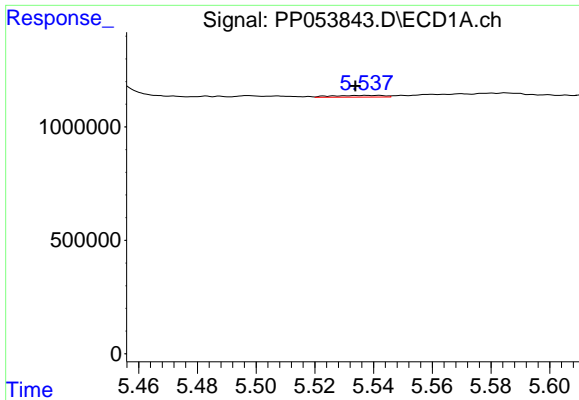
#12 AR-1232-2

R.T.: 5.242 min  
 Delta R.T.: 0.000 min  
 Response: 31205  
 Conc: 1.21 ng/ml



#12 AR-1232-2

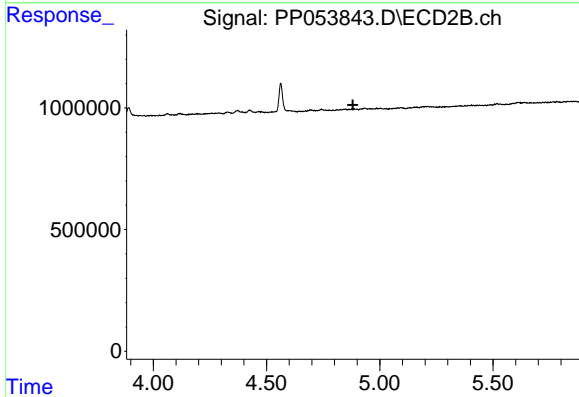
R.T.: 4.696 min  
 Delta R.T.: -0.009 min  
 Response: 153628  
 Conc: 5.15 ng/ml



#13 AR-1232-3

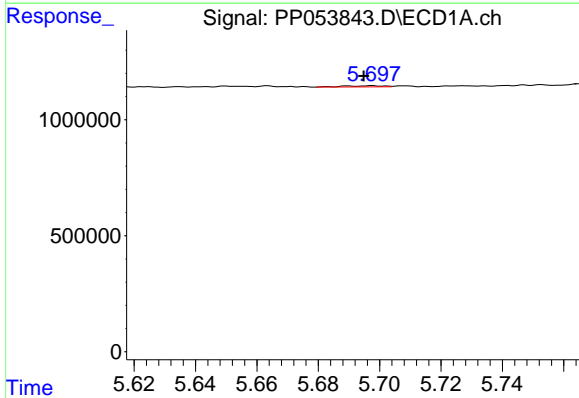
R.T.: 5.537 min  
 Delta R.T.: 0.004 min  
 Response: 94373  
 Conc: 2.01 ng/ml

Instrument :  
 ECD\_P  
 ClientSampleId :



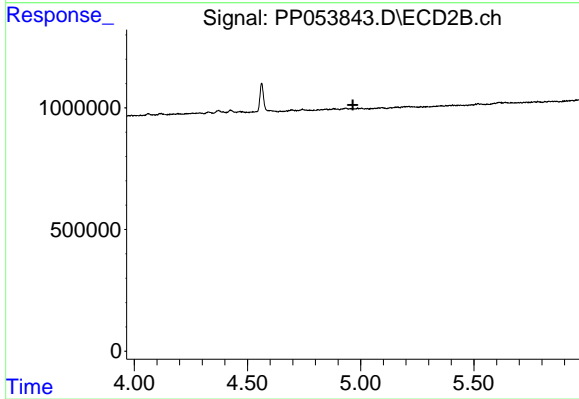
#13 AR-1232-3

R.T.: 0.000 min  
 Exp R.T. : 4.882 min  
 Response: 0  
 Conc: N.D.



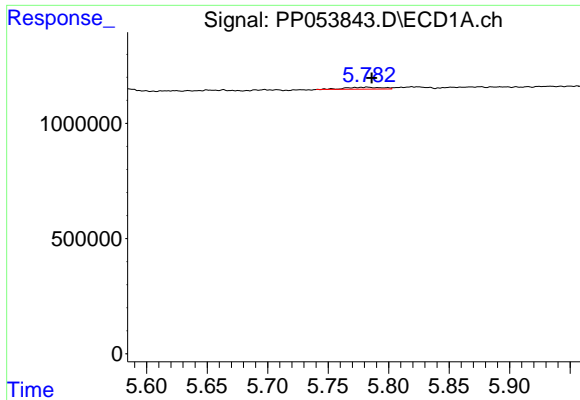
#14 AR-1232-4

R.T.: 5.697 min  
 Delta R.T.: 0.003 min  
 Response: 48249  
 Conc: 2.04 ng/ml



#14 AR-1232-4

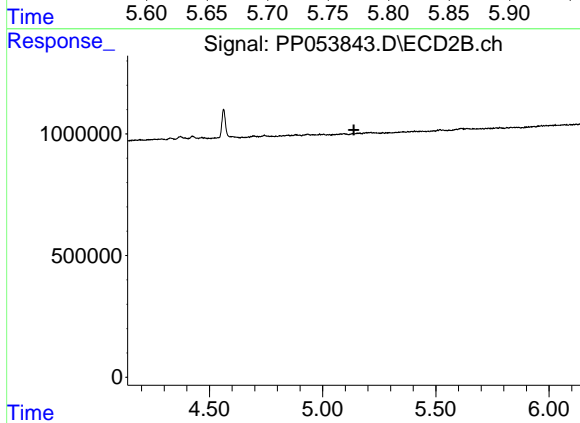
R.T.: 0.000 min  
 Exp R.T. : 4.966 min  
 Response: 0  
 Conc: N.D.



#15 AR-1232-5

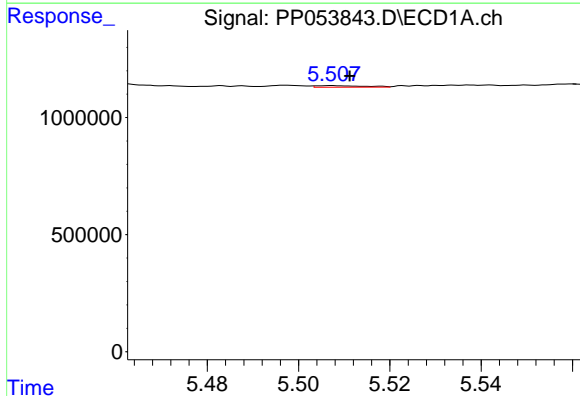
R.T.: 5.782 min  
 Delta R.T.: -0.004 min  
 Response: 174157  
 Conc: 9.44 ng/ml

Instrument :  
 ECD\_P  
 ClientSampleId :



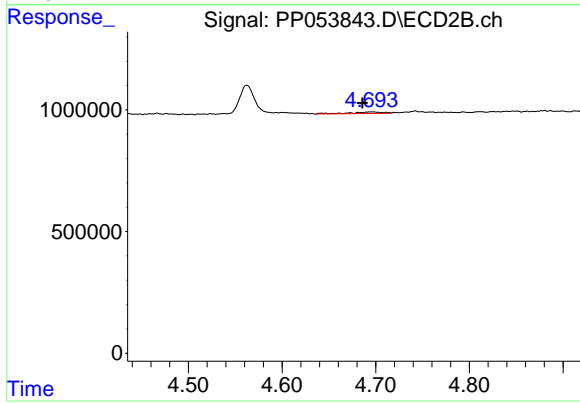
#15 AR-1232-5

R.T.: 0.000 min  
 Exp R.T. : 5.138 min  
 Response: 0  
 Conc: N.D.



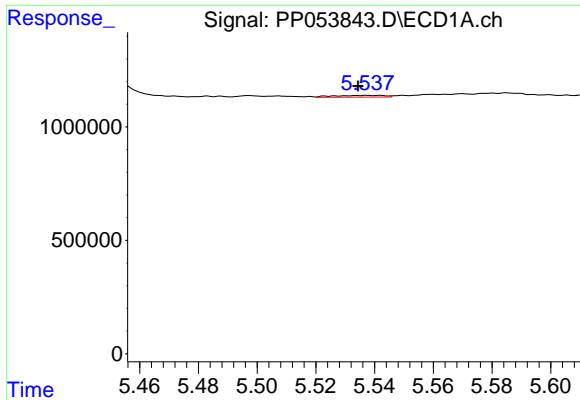
#16 AR-1242-1

R.T.: 5.507 min  
 Delta R.T.: -0.004 min  
 Response: 48783  
 Conc: 0.93 ng/ml



#16 AR-1242-1

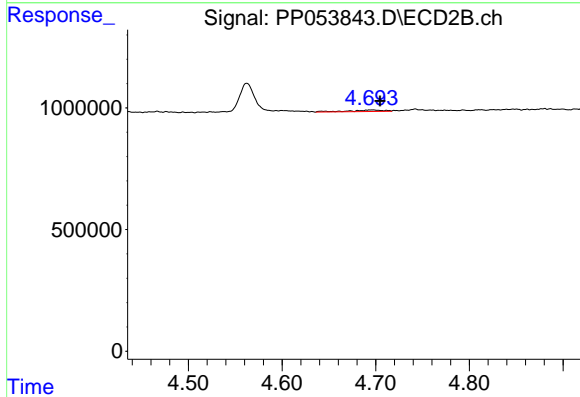
R.T.: 4.696 min  
 Delta R.T.: 0.010 min  
 Response: 153628  
 Conc: 4.34 ng/ml



#17 AR-1242-2

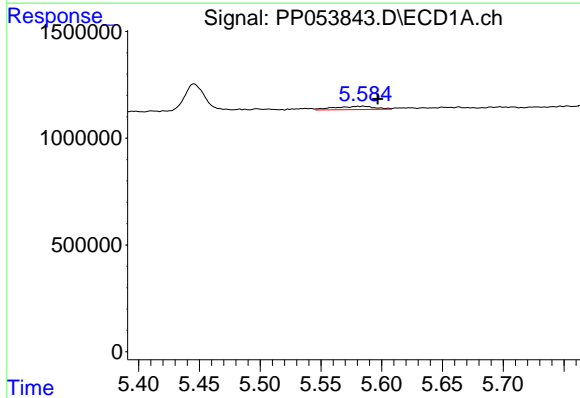
R.T.: 5.537 min  
 Delta R.T.: 0.003 min  
 Response: 94373  
 Conc: 1.24 ng/ml

Instrument :  
 ECD\_P  
 ClientSampleId :



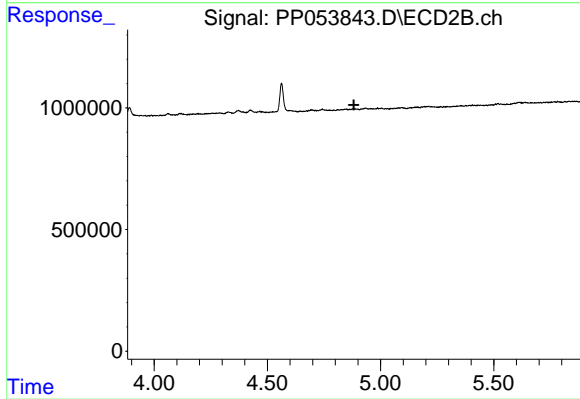
#17 AR-1242-2

R.T.: 4.696 min  
 Delta R.T.: -0.009 min  
 Response: 153628  
 Conc: 3.20 ng/ml



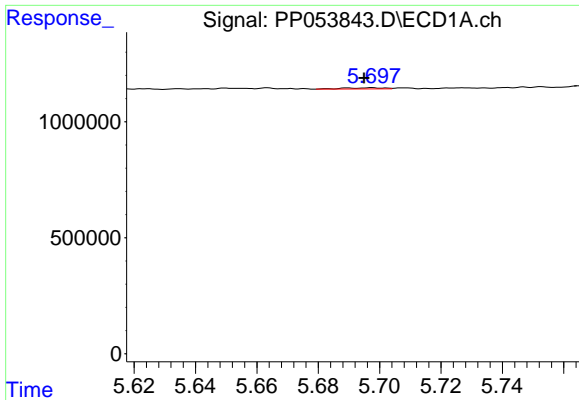
#18 AR-1242-3

R.T.: 5.585 min  
 Delta R.T.: -0.012 min  
 Response: 359102  
 Conc: 7.33 ng/ml



#18 AR-1242-3

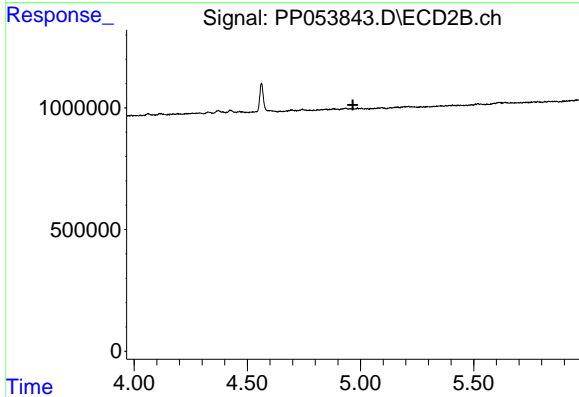
R.T.: 0.000 min  
 Exp R.T.: 4.882 min  
 Response: 0  
 Conc: N.D.



#19 AR-1242-4

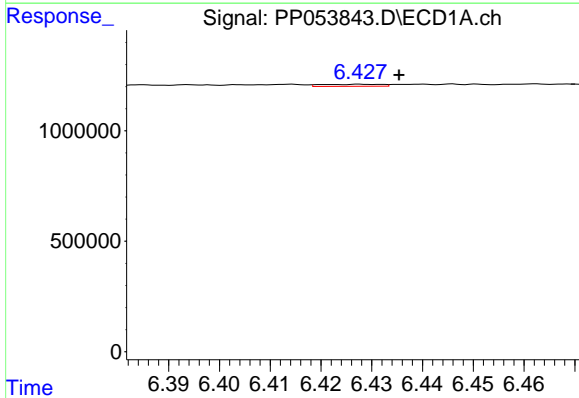
R.T.: 5.697 min  
 Delta R.T.: 0.002 min  
 Response: 48249  
 Conc: 1.26 ng/ml

Instrument :  
 ECD\_P  
 ClientSampleId :



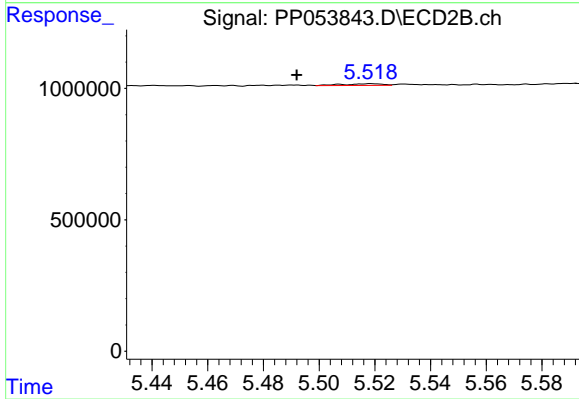
#19 AR-1242-4

R.T.: 0.000 min  
 Exp R.T. : 4.966 min  
 Response: 0  
 Conc: N.D.



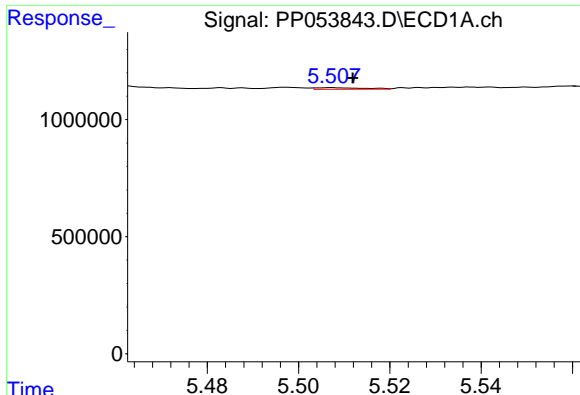
#20 AR-1242-5

R.T.: 6.428 min  
 Delta R.T.: -0.007 min  
 Response: 73449  
 Conc: 1.80 ng/ml



#20 AR-1242-5

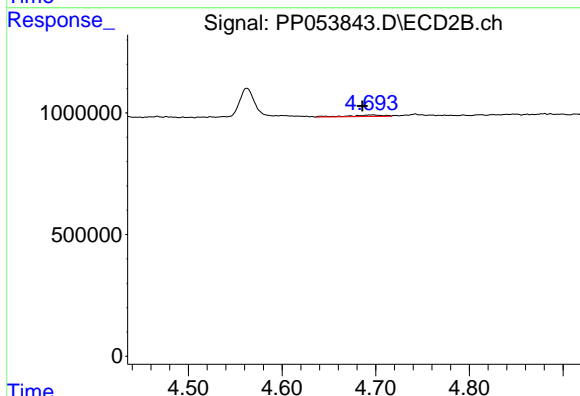
R.T.: 5.519 min  
 Delta R.T.: 0.027 min  
 Response: 64452  
 Conc: 2.11 ng/ml



#21 AR-1248-1

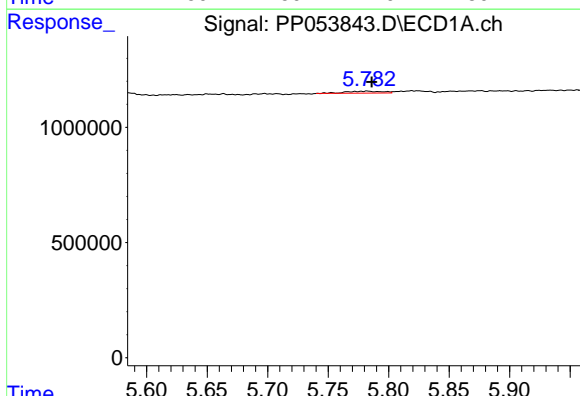
R.T.: 5.507 min  
 Delta R.T.: -0.005 min  
 Response: 48783  
 Conc: 1.16 ng/ml

Instrument :  
 ECD\_P  
 ClientSampleId :



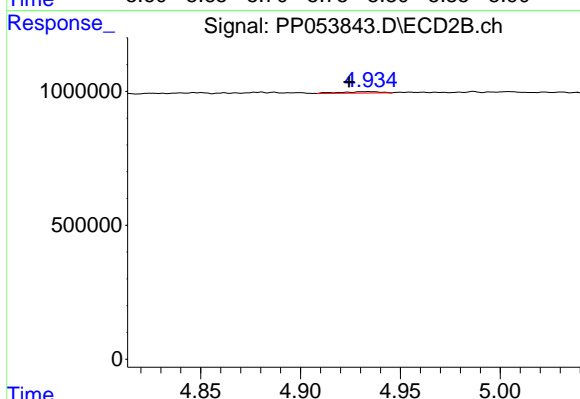
#21 AR-1248-1

R.T.: 4.696 min  
 Delta R.T.: 0.010 min  
 Response: 153628  
 Conc: 5.40 ng/ml



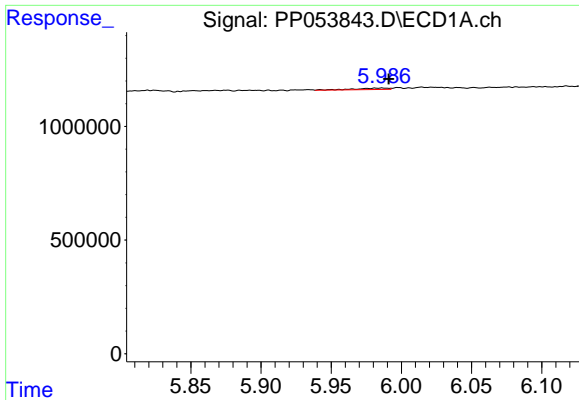
#22 AR-1248-2

R.T.: 5.782 min  
 Delta R.T.: -0.004 min  
 Response: 174157  
 Conc: 2.76 ng/ml



#22 AR-1248-2

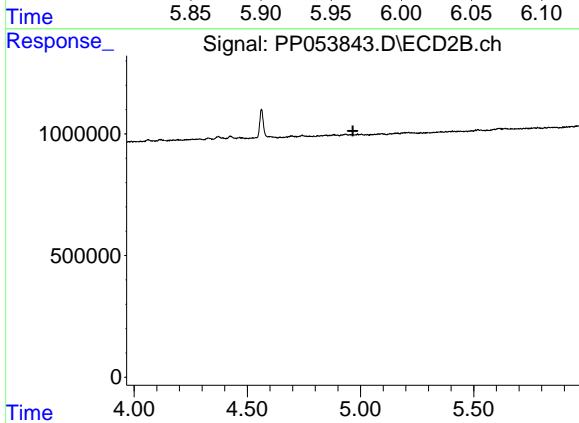
R.T.: 4.934 min  
 Delta R.T.: 0.010 min  
 Response: 68783  
 Conc: 1.66 ng/ml



#23 AR-1248-3

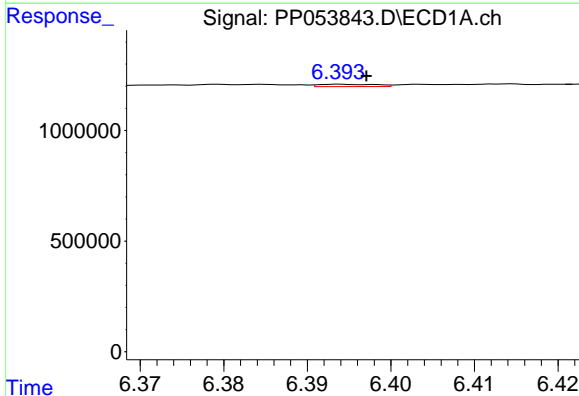
R.T.: 5.987 min  
 Delta R.T.: -0.004 min  
 Response: 101071  
 Conc: 1.44 ng/ml

Instrument :  
 ECD\_P  
 ClientSampleId :



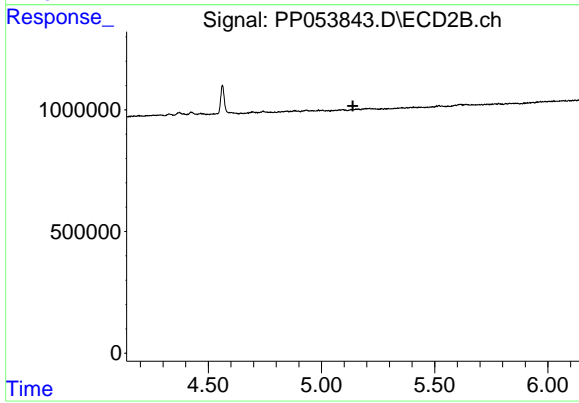
#23 AR-1248-3

R.T.: 0.000 min  
 Exp R.T. : 4.966 min  
 Response: 0  
 Conc: N.D.



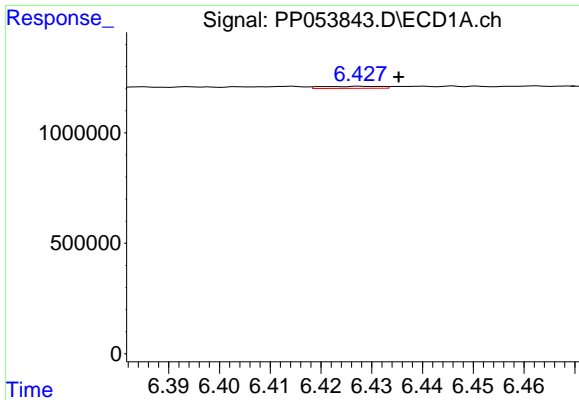
#24 AR-1248-4

R.T.: 6.394 min  
 Delta R.T.: -0.003 min  
 Response: 49419  
 Conc: 0.70 ng/ml



#24 AR-1248-4

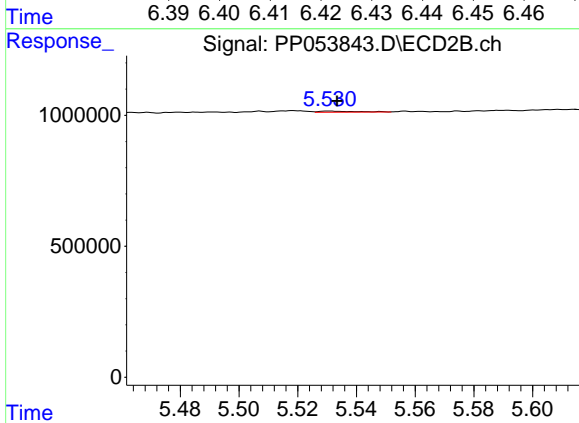
R.T.: 0.000 min  
 Exp R.T. : 5.138 min  
 Response: 0  
 Conc: N.D.



#25 AR-1248-5

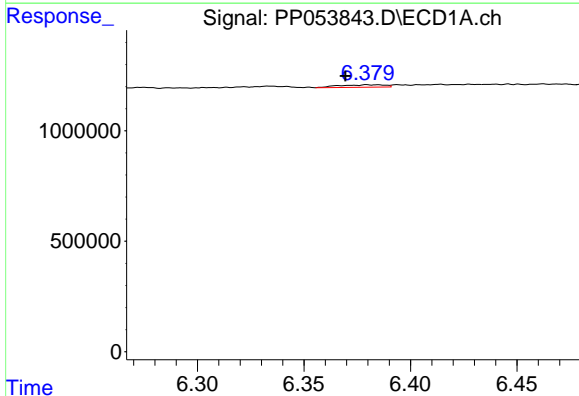
R.T.: 6.428 min  
 Delta R.T.: -0.007 min  
 Response: 73449  
 Conc: 1.04 ng/ml

Instrument :  
 ECD\_P  
 ClientSampleId :



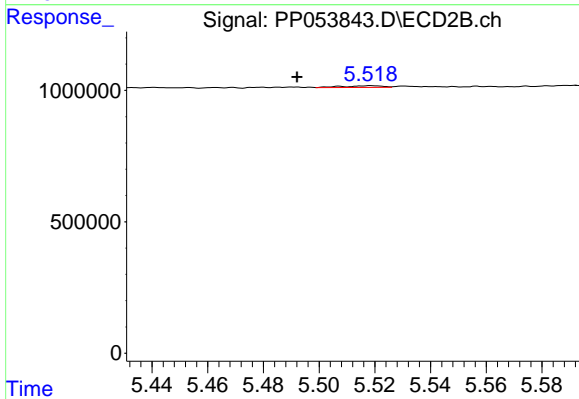
#25 AR-1248-5

R.T.: 5.531 min  
 Delta R.T.: -0.003 min  
 Response: 38355  
 Conc: 1.02 ng/ml



#26 AR-1254-1

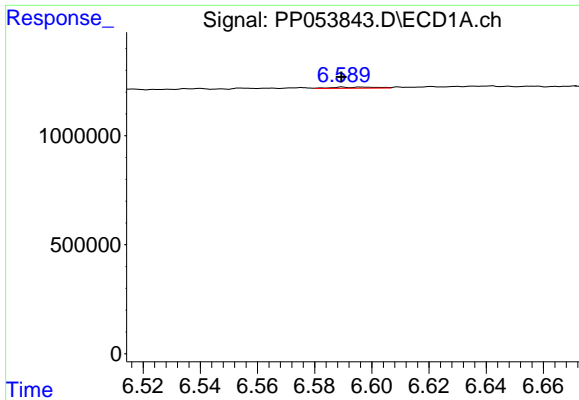
R.T.: 6.385 min  
 Delta R.T.: 0.015 min  
 Response: 168827  
 Conc: 2.18 ng/ml



#26 AR-1254-1

R.T.: 5.519 min  
 Delta R.T.: 0.027 min  
 Response: 64452  
 Conc: 0.98 ng/ml

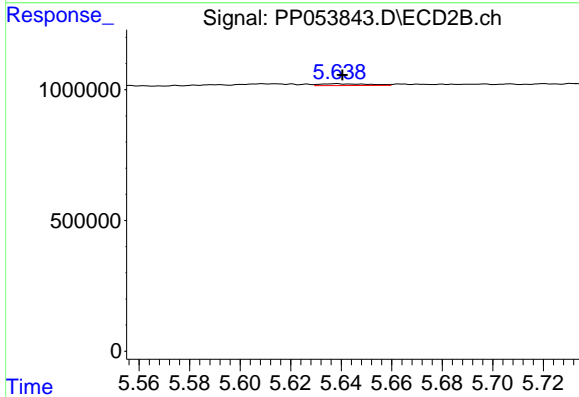




#27 AR-1254-2

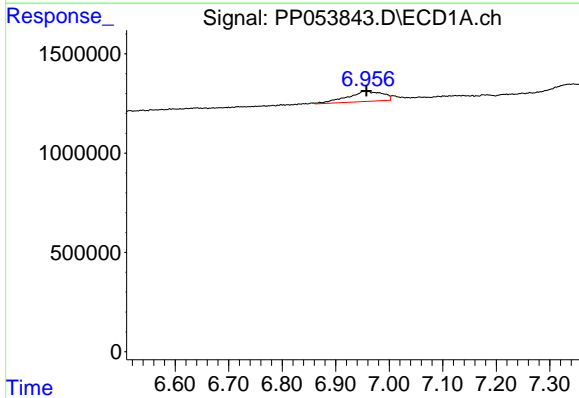
R.T.: 6.590 min  
 Delta R.T.: 0.000 min  
 Response: 59817  
 Conc: 0.51 ng/ml

Instrument :  
 ECD\_P  
 ClientSampleId :



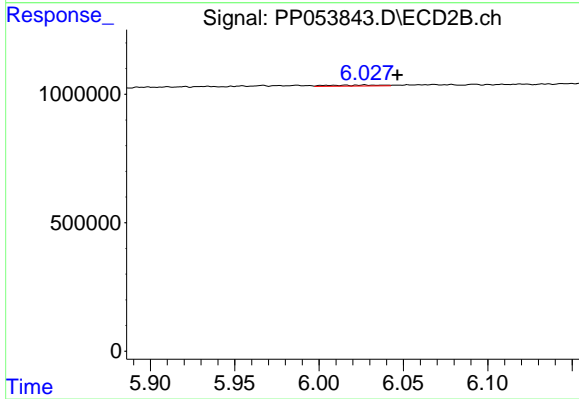
#27 AR-1254-2

R.T.: 5.638 min  
 Delta R.T.: -0.002 min  
 Response: 94147  
 Conc: 1.61 ng/ml



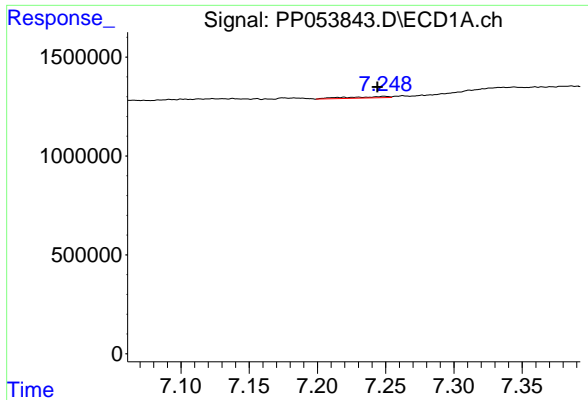
#28 AR-1254-3

R.T.: 6.956 min  
 Delta R.T.: -0.001 min  
 Response: 2348433  
 Conc: 20.05 ng/ml



#28 AR-1254-3

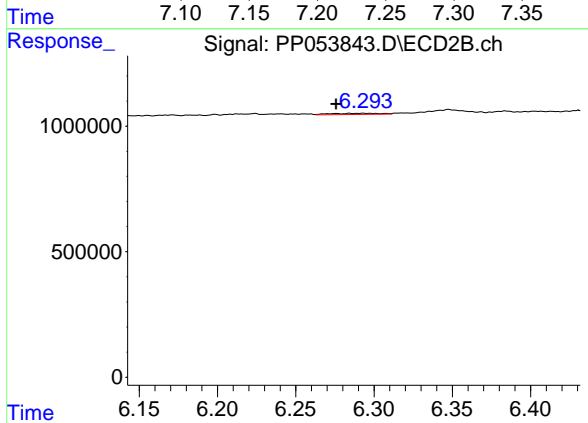
R.T.: 6.027 min  
 Delta R.T.: -0.019 min  
 Response: 91315  
 Conc: 1.04 ng/ml



#29 AR-1254-4

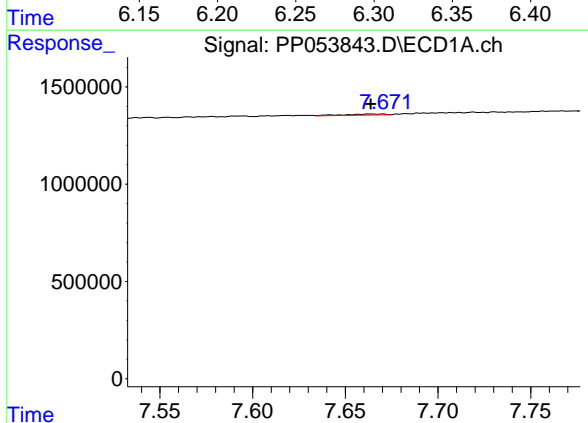
R.T.: 7.249 min  
 Delta R.T.: 0.005 min  
 Response: 145256  
 Conc: 1.83 ng/ml

Instrument :  
 ECD\_P  
 ClientSampleId :



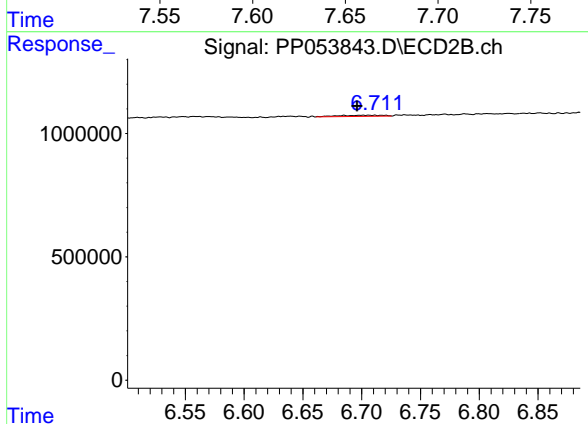
#29 AR-1254-4

R.T.: 6.293 min  
 Delta R.T.: 0.018 min  
 Response: 104222  
 Conc: 2.27 ng/ml



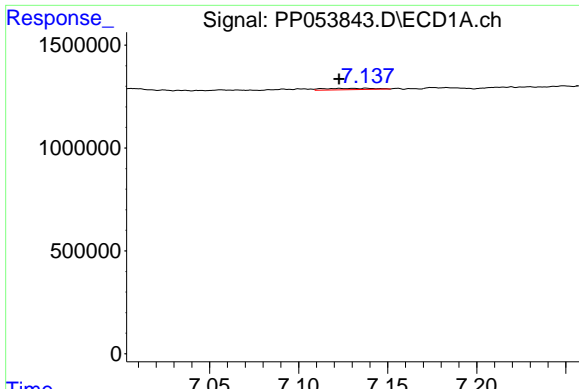
#30 AR-1254-5

R.T.: 7.664 min  
 Delta R.T.: 0.000 min  
 Response: 95295  
 Conc: 0.98 ng/ml



#30 AR-1254-5

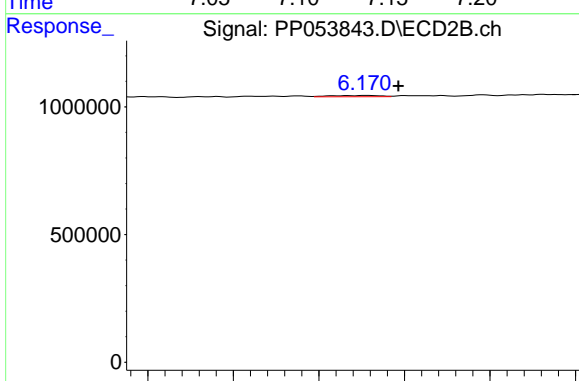
R.T.: 6.711 min  
 Delta R.T.: 0.015 min  
 Response: 129767  
 Conc: 1.67 ng/ml



#31 AR-1260-1

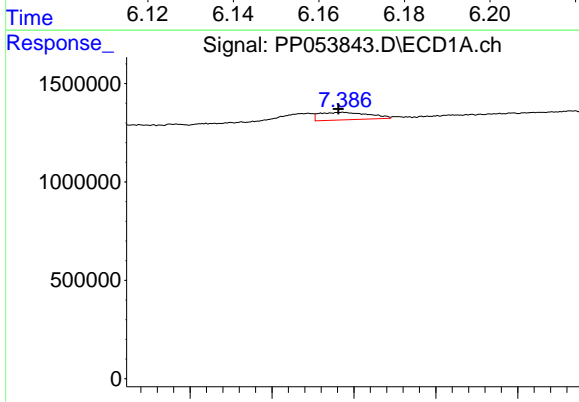
R.T.: 7.138 min  
 Delta R.T.: 0.016 min  
 Response: 125035  
 Conc: 1.29 ng/ml

Instrument :  
 ECD\_P  
 ClientSampleId :



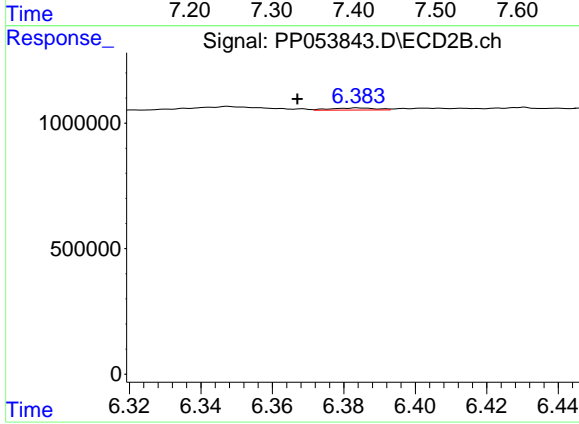
#31 AR-1260-1

R.T.: 6.171 min  
 Delta R.T.: -0.007 min  
 Response: 39124  
 Conc: 0.60 ng/ml



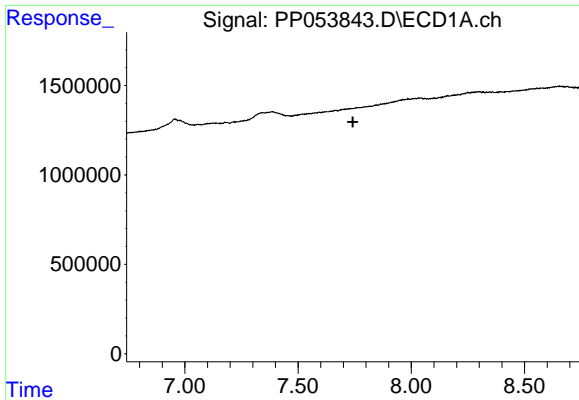
#32 AR-1260-2

R.T.: 7.386 min  
 Delta R.T.: 0.005 min  
 Response: 1599375  
 Conc: 14.48 ng/ml



#32 AR-1260-2

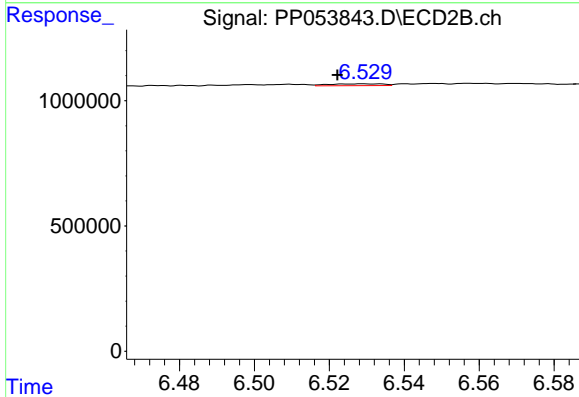
R.T.: 6.384 min  
 Delta R.T.: 0.017 min  
 Response: 74433  
 Conc: 0.99 ng/ml



#33 AR-1260-3

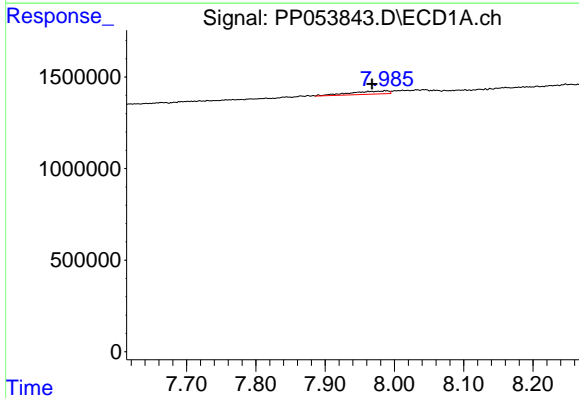
R.T.: 0.000 min  
 Exp R.T. : 7.742 min  
 Response: 0  
 Conc: N.D.

Instrument :  
 ECD\_P  
 ClientSampleId :



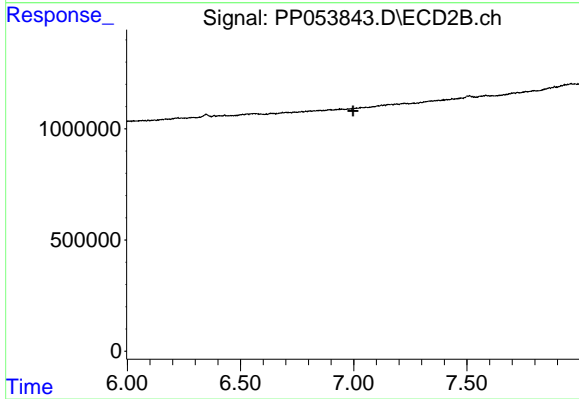
#33 AR-1260-3

R.T.: 6.529 min  
 Delta R.T.: 0.007 min  
 Response: 71297  
 Conc: 0.98 ng/ml



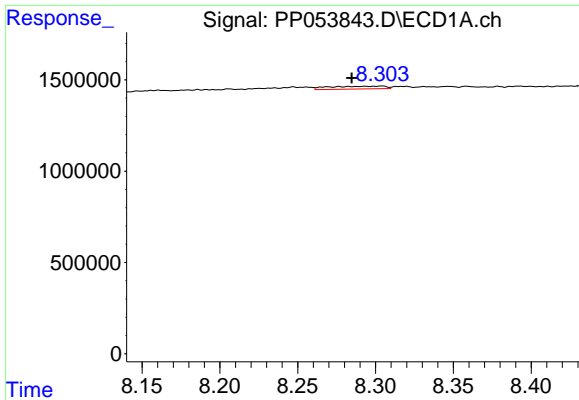
#34 AR-1260-4

R.T.: 7.987 min  
 Delta R.T.: 0.019 min  
 Response: 652132  
 Conc: 6.95 ng/ml



#34 AR-1260-4

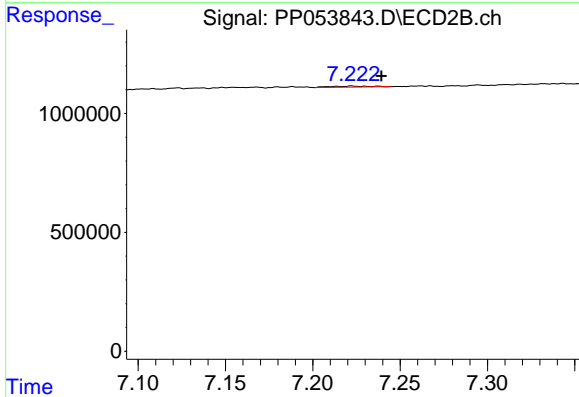
R.T.: 0.000 min  
 Exp R.T. : 6.997 min  
 Response: 0  
 Conc: N.D.



#35 AR-1260-5

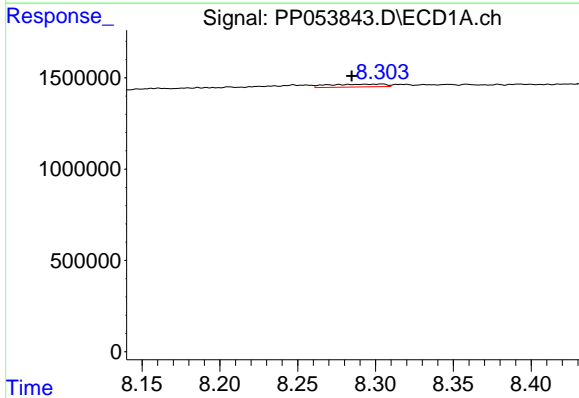
R.T.: 8.304 min  
 Delta R.T.: 0.019 min  
 Response: 392228  
 Conc: 2.47 ng/ml

Instrument :  
 ECD\_P  
 ClientSampleId :



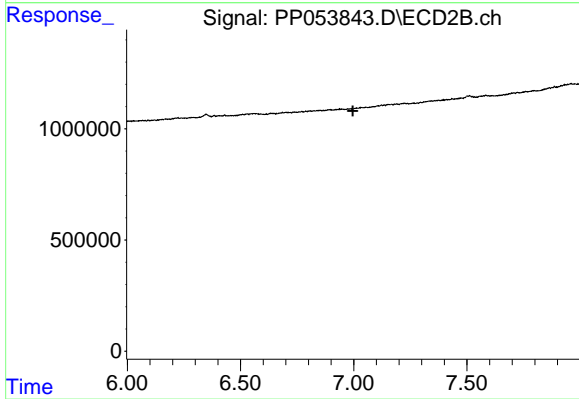
#35 AR-1260-5

R.T.: 7.223 min  
 Delta R.T.: -0.016 min  
 Response: 71720  
 Conc: 0.60 ng/ml



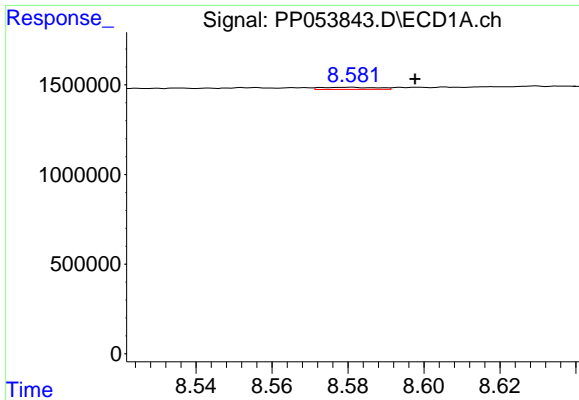
#37 AR-1262-2

R.T.: 8.304 min  
 Delta R.T.: 0.019 min  
 Response: 392228  
 Conc: 2.05 ng/ml



#37 AR-1262-2

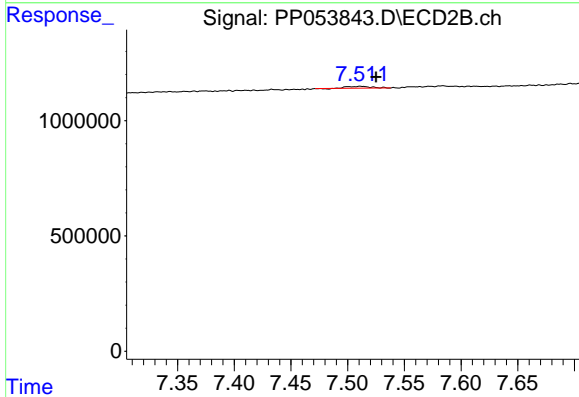
R.T.: 0.000 min  
 Exp R.T. : 6.996 min  
 Response: 0  
 Conc: N.D.



#38 AR-1262-3

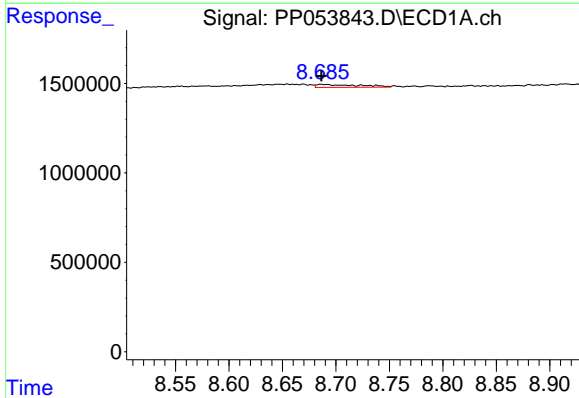
R.T.: 8.581 min  
 Delta R.T.: -0.017 min  
 Response: 120993  
 Conc: 0.87 ng/ml

Instrument :  
 ECD\_P  
 ClientSampleId :



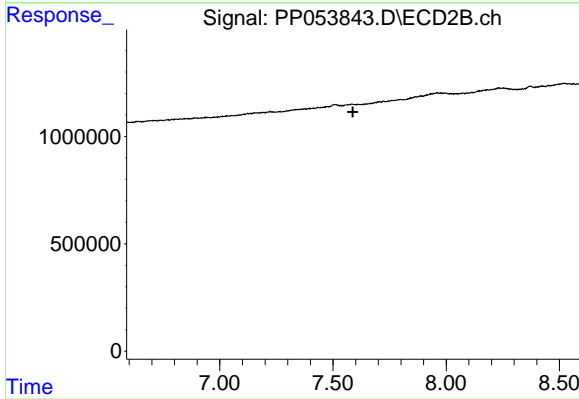
#38 AR-1262-3

R.T.: 7.512 min  
 Delta R.T.: -0.013 min  
 Response: 119824  
 Conc: 1.90 ng/ml



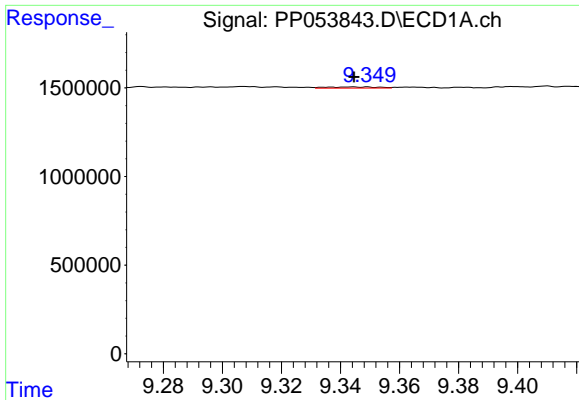
#39 AR-1262-4

R.T.: 8.686 min  
 Delta R.T.: 0.000 min  
 Response: 445223  
 Conc: 7.15 ng/ml



#39 AR-1262-4

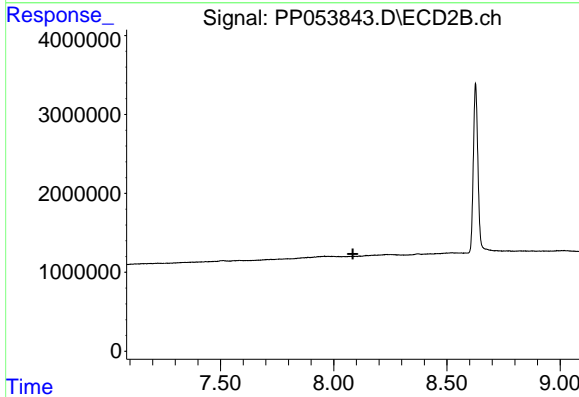
R.T.: 0.000 min  
 Exp R.T. : 7.588 min  
 Response: 0  
 Conc: N.D.



#40 AR-1262-5

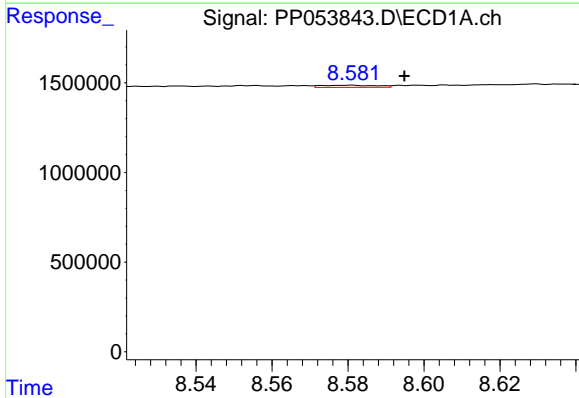
R.T.: 9.349 min  
 Delta R.T.: 0.004 min  
 Response: 77571  
 Conc: 1.10 ng/ml

Instrument :  
 ECD\_P  
 ClientSampleId :



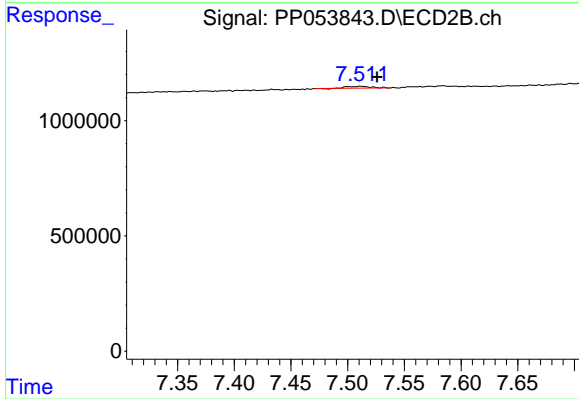
#40 AR-1262-5

R.T.: 0.000 min  
 Exp R.T. : 8.084 min  
 Response: 0  
 Conc: N.D.



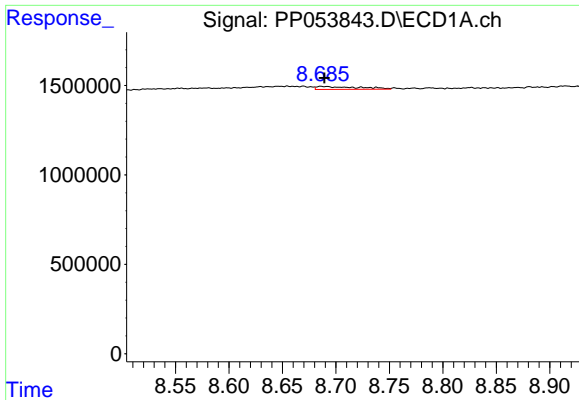
#41 AR-1268-1

R.T.: 8.581 min  
 Delta R.T.: -0.014 min  
 Response: 120993  
 Conc: 0.50 ng/ml



#41 AR-1268-1

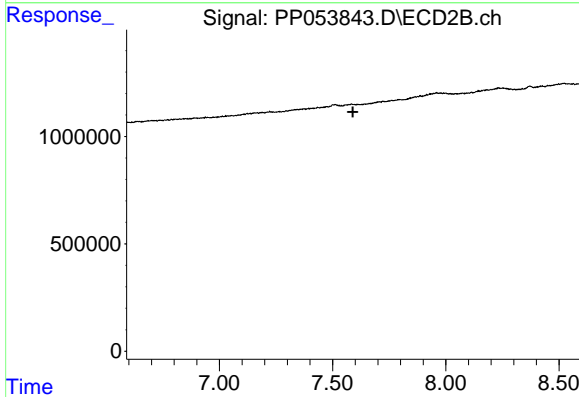
R.T.: 7.512 min  
 Delta R.T.: -0.014 min  
 Response: 119824  
 Conc: 0.66 ng/ml



#42 AR-1268-2

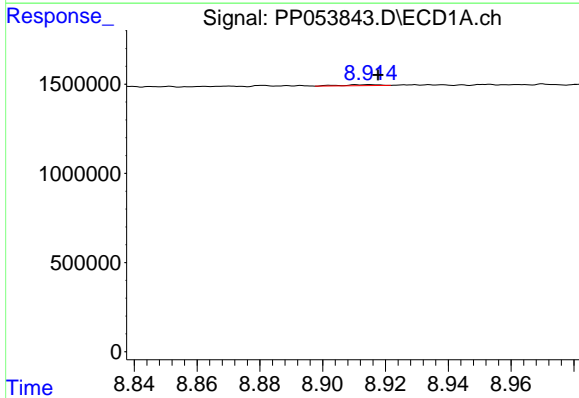
R.T.: 8.686 min  
 Delta R.T.: -0.003 min  
 Response: 445223  
 Conc: 1.96 ng/ml

Instrument :  
 ECD\_P  
 ClientSampleId :



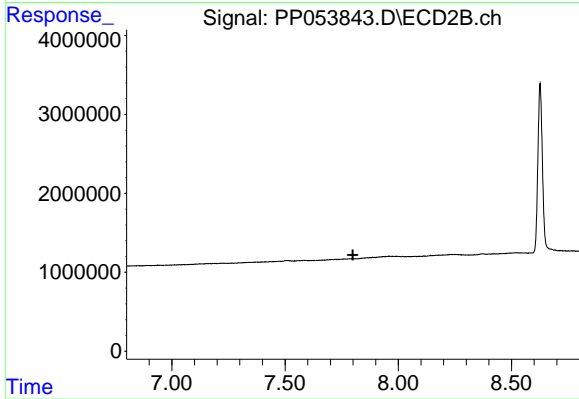
#42 AR-1268-2

R.T.: 0.000 min  
 Exp R.T. : 7.589 min  
 Response: 0  
 Conc: N.D.



#43 AR-1268-3

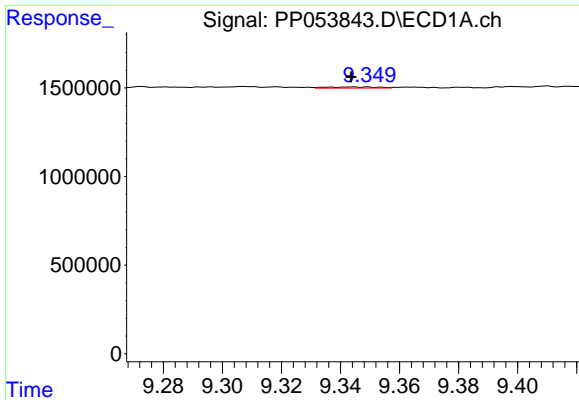
R.T.: 8.915 min  
 Delta R.T.: -0.002 min  
 Response: 45649  
 Conc: 0.24 ng/ml



#43 AR-1268-3

R.T.: 0.000 min  
 Exp R.T. : 7.799 min  
 Response: 0  
 Conc: N.D.

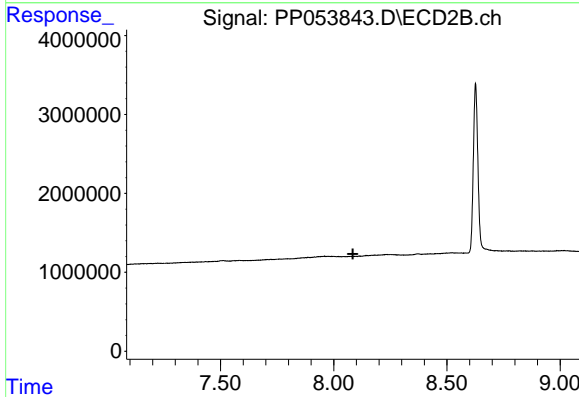




#44 AR-1268-4

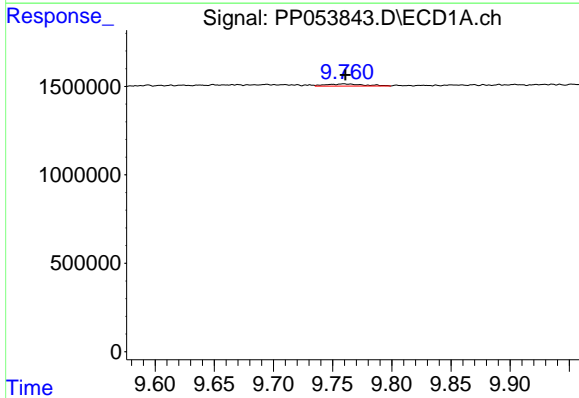
R.T.: 9.349 min  
 Delta R.T.: 0.006 min  
 Response: 77571  
 Conc: 1.01 ng/ml

Instrument :  
 ECD\_P  
 ClientSampleId :



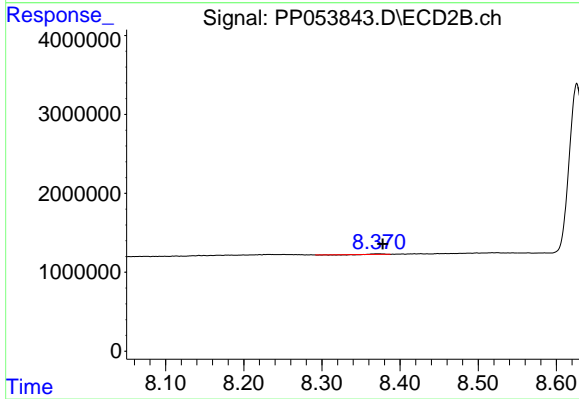
#44 AR-1268-4

R.T.: 0.000 min  
 Exp R.T. : 8.085 min  
 Response: 0  
 Conc: N.D.



#45 AR-1268-5

R.T.: 9.759 min  
 Delta R.T.: -0.001 min  
 Response: 268551  
 Conc: 0.46 ng/ml



#45 AR-1268-5

R.T.: 8.371 min  
 Delta R.T.: -0.007 min  
 Response: 21848  
 Conc: 0.05 ng/ml