

Data Path : Z:\pestpcbsrv\HPCHEM1\ECD_P\Data\PP121922\
 Data File : PP053847.D
 Signal(s) : Signal #1: ECD1A.ch Signal #2: ECD2B.ch
 Acq On : 19 Dec 2022 19:57
 Operator : YP\AJ
 Sample : N6090-01
 Misc :
 ALS Vial : 26 Sample Multiplier: 1

Instrument :
 ECD_P
 ClientSampleId :

Integration File signal 1: autoint1.e
 Integration File signal 2: autoint2.e
 Quant Time: Dec 20 03:28:14 2022
 Quant Method : Z:\pestpcbsrv\HPCHEM1\ECD_P\methods\PP121322.M
 Quant Title : GC EXTRACTABLES
 QLast Update : Wed Dec 14 05:38:40 2022
 Response via : Initial Calibration
 Integrator: ChemStation

Volume Inj. : 2 µl
 Signal #1 Phase : ZB-MR1 Signal #2 Phase: ZB-MR2
 Signal #1 Info : 30Mx0.32mmx 0.50µ Signal #2 Info : 30M x 0.32mm x 0.25µm

Compound	RT#1	RT#2	Resp#1	Resp#2	ng/ml	ng/ml
System Monitoring Compounds						
1) SA Tetrachlo...	4.339	3.591	19787664	13220826	9.424	8.465
2) SA Decachlor...	10.100	8.626	14054618	11156568	8.278	7.988
Target Compounds						
3) L1 AR-1016-1	5.534f	4.679	367594	967279	5.421	21.061 #
4) L1 AR-1016-2	5.534	4.703	367594	1091742	3.690	17.424 #
5) L1 AR-1016-3	5.602	4.875	1106661	460684	17.510	13.573
6) L1 AR-1016-4	5.697	4.923	297737	406103	6.009	13.628 #
7) L1 AR-1016-5	5.988	5.135	646409	85937	12.281	2.370 #
8) L2 AR-1221-1	4.549	3.803	991284	462340	38.479	23.878 #
9) L2 AR-1221-2	4.636	3.890	776811	430604	39.900	29.458 #
10) L2 AR-1221-3	4.711	3.975	1029325	7821742	17.712	175.845 #
11) L3 AR-1232-1	4.711	3.975	1029325	7821742	22.982	227.301 #
12) L3 AR-1232-2	5.243	4.703	570901	1091742	22.194	36.579 #
13) L3 AR-1232-3	5.534	4.875	367594	460684	7.832	29.077 #
14) L3 AR-1232-4	5.697	4.981f	297737	1576616	12.566	102.029 #
15) L3 AR-1232-5	5.788	5.135	1179949	85937	63.980	5.219 #
16) L4 AR-1242-1	5.534f	4.679	367594	967279	7.018	27.314 #
17) L4 AR-1242-2	5.534	4.703	367594	1091742	4.825	22.725 #
18) L4 AR-1242-3	5.602	4.875	1106661	460684	22.587	17.670
19) L4 AR-1242-4	5.697	4.981	297737	1576616	7.756	55.264 #
20) L4 AR-1242-5	6.424	5.491	288047	538753	7.062	17.651 #
21) L5 AR-1248-1	5.534f	4.679	367594	967279	8.722	34.002 #
22) L5 AR-1248-2	5.788	4.923	1179949	406103	18.670	9.817 #
23) L5 AR-1248-3	5.988	4.981	646409	1576616	9.229	37.541 #
24) L5 AR-1248-4	6.386	5.135	951729	85937	13.495	1.786 #
25) L5 AR-1248-5	6.424	5.532	288047	184181	4.088	4.905
26) L6 AR-1254-1	6.386f	5.491	951729	538753	12.282	8.227 #
27) L6 AR-1254-2	6.600	5.643	721150	492258	6.198	8.441 #
28) L6 AR-1254-3	6.954	6.060	570660	2889606	4.872	32.847 #
29) L6 AR-1254-4	7.263f	0.000	238578	0	3.009	N.D. #
30) L6 AR-1254-5	7.678	6.711	814687	951189	8.354	12.205 #
31) L7 AR-1260-1	7.115	6.175	1577808	306557	16.338	4.700 #
32) L7 AR-1260-2	7.368	6.365	482716	272342	4.370	3.617
33) L7 AR-1260-3	7.731	6.517	1447652	342991	19.146	4.732 #
34) L7 AR-1260-4	7.977	0.000	1115776	0	11.888	N.D. #
35) L7 AR-1260-5	8.282	7.250	400407	469855	2.525	3.929 #
36) L8 AR-1262-1	7.731	6.776	1447652	124058	12.093	3.478 #
37) L8 AR-1262-2	8.282	0.000	400407	0	2.088	N.D. #
39) L8 AR-1262-4	8.688	7.588	280349	824861	4.505	7.214 #
40) L8 AR-1262-5	9.360f	8.077	138106	223244	1.954	4.481 #
41) L9 AR-1268-1	8.589	7.527	227951	-161019	0.934	N.D. #
42) L9 AR-1268-2	8.688	7.588	280349	824861	1.234	4.834 #

Data Path : Z:\pestpcbsrv\HPCHEM1\ECD_P\Data\PP121922\
 Data File : PP053847.D
 Signal(s) : Signal #1: ECD1A.ch Signal #2: ECD2B.ch
 Acq On : 19 Dec 2022 19:57
 Operator : YP\AJ
 Sample : N6090-01
 Misc :
 ALS Vial : 26 Sample Multiplier: 1

Instrument :
 ECD_P
 ClientSampleId :

Integration File signal 1: autoint1.e
 Integration File signal 2: autoint2.e
 Quant Time: Dec 20 03:28:14 2022
 Quant Method : Z:\pestpcbsrv\HPCHEM1\ECD_P\methods\PP121322.M
 Quant Title : GC EXTRACTABLES
 QLast Update : Wed Dec 14 05:38:40 2022
 Response via : Initial Calibration
 Integrator: ChemStation

Volume Inj. : 2 µl
 Signal #1 Phase : ZB-MR1 Signal #2 Phase: ZB-MR2
 Signal #1 Info : 30Mx0.32mmx 0.50µ Signal #2 Info : 30M x 0.32mm x 0.25µm

	Compound	RT#1	RT#2	Resp#1	Resp#2	ng/ml	ng/ml
43)	L9 AR-1268-3	8.922	7.807	271592	362286	1.417	2.453 #
44)	L9 AR-1268-4	9.360f	8.077	138106	223244	1.794	4.006 #
45)	L9 AR-1268-5	9.763	8.364	101833	442081	0.173	0.935 #

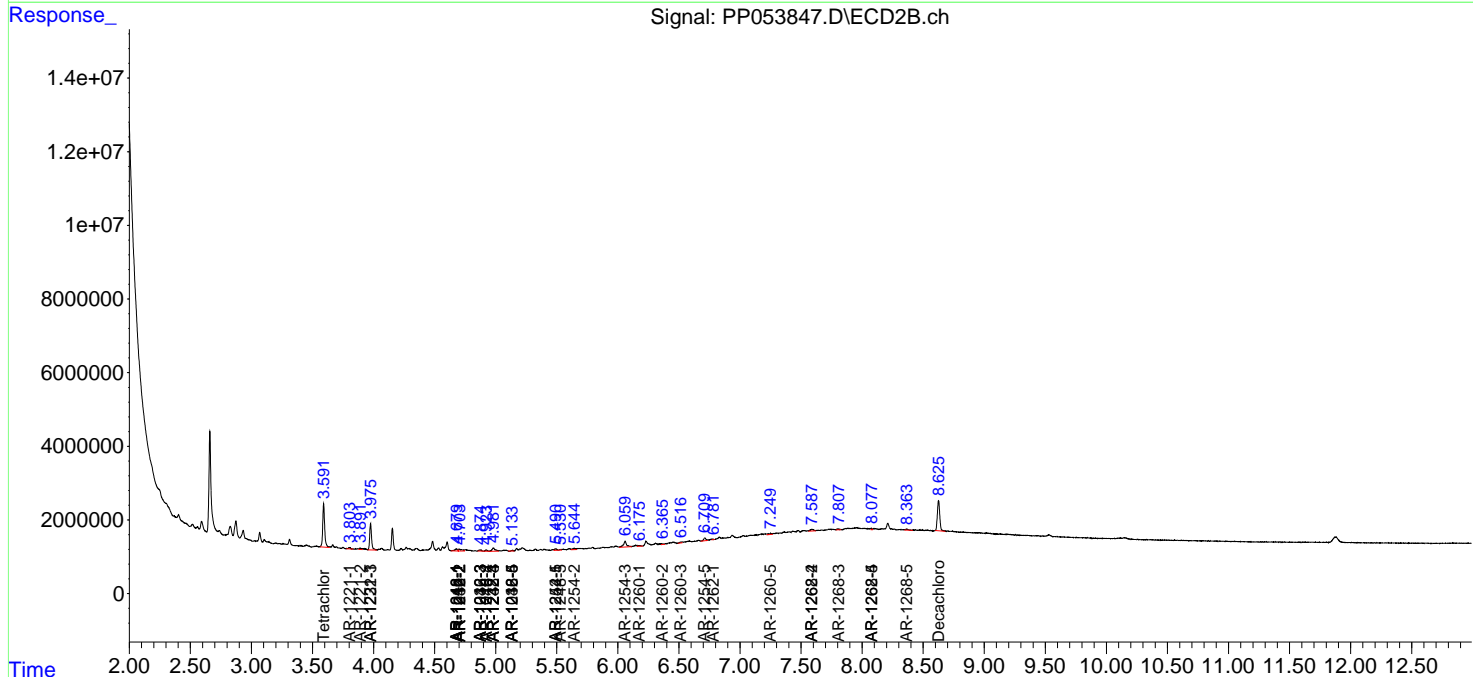
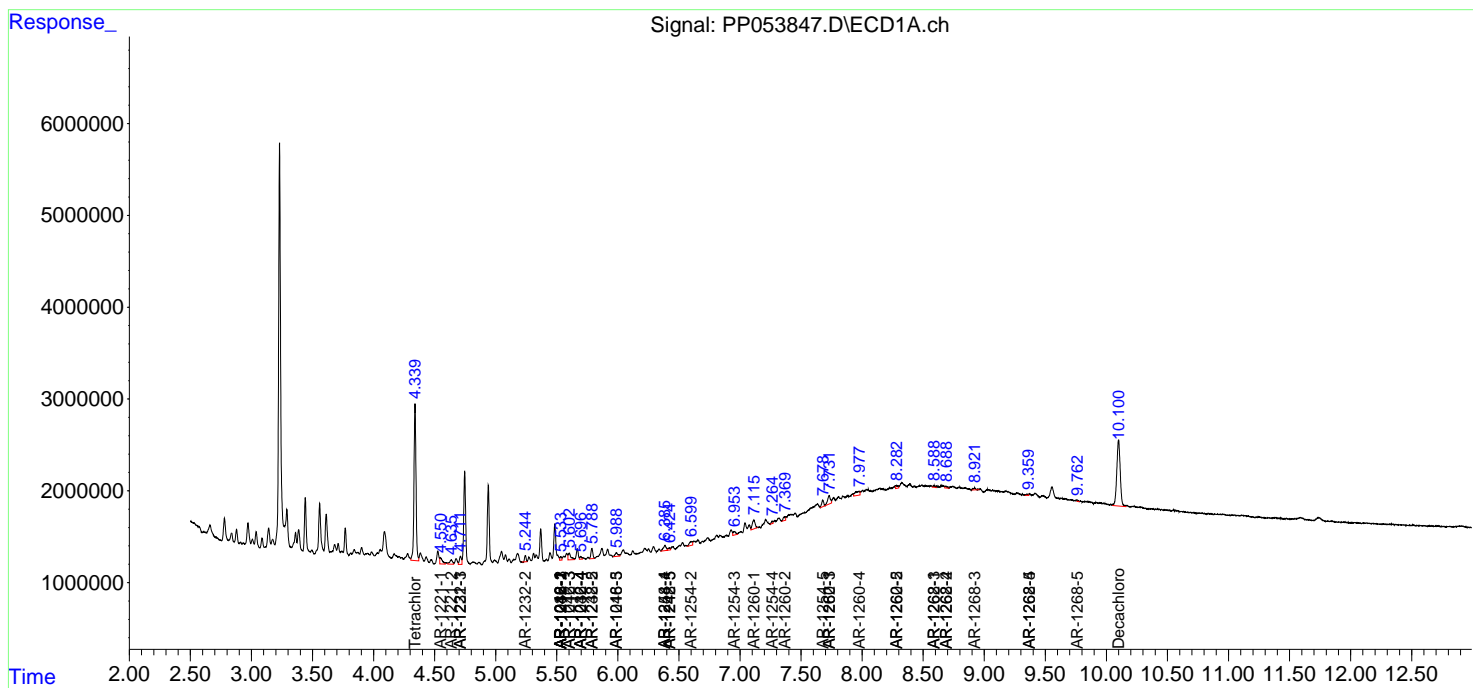
(f)=RT Delta > 1/2 Window (#)=Amounts differ by > 25% (m)=manual int.

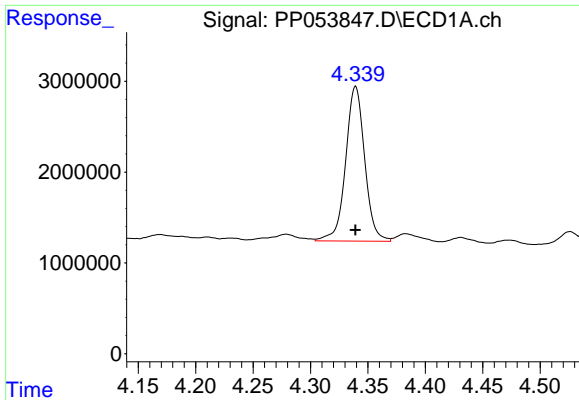
Data Path : Z:\pestpcbsrv\HPCHEM1\ECD_P\Data\PP121922\
 Data File : PP053847.D
 Signal(s) : Signal #1: ECD1A.ch Signal #2: ECD2B.ch
 Acq On : 19 Dec 2022 19:57
 Operator : YP\AJ
 Sample : N6090-01
 Misc :
 ALS Vial : 26 Sample Multiplier: 1

Instrument :
 ECD_P
 ClientSampleId :

Integration File signal 1: autoint1.e
 Integration File signal 2: autoint2.e
 Quant Time: Dec 20 03:28:14 2022
 Quant Method : Z:\pestpcbsrv\HPCHEM1\ECD_P\methods\PP121322.M
 Quant Title : GC EXTRACTABLES
 QLast Update : Wed Dec 14 05:38:40 2022
 Response via : Initial Calibration
 Integrator: ChemStation

Volume Inj. : 2 µl
 Signal #1 Phase : ZB-MR1 Signal #2 Phase: ZB-MR2
 Signal #1 Info : 30Mx0.32mmx 0.50µ Signal #2 Info : 30M x 0.32mm x 0.25µm

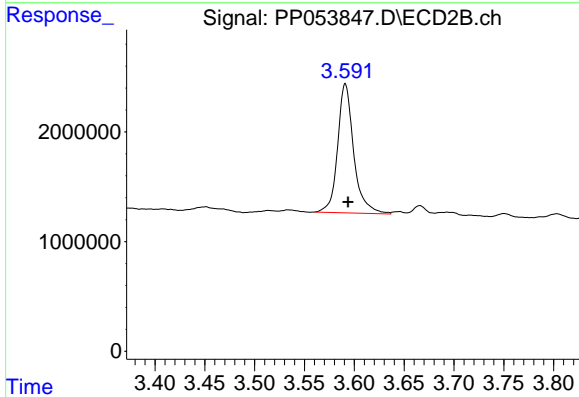




#1 Tetrachloro-m-xylene

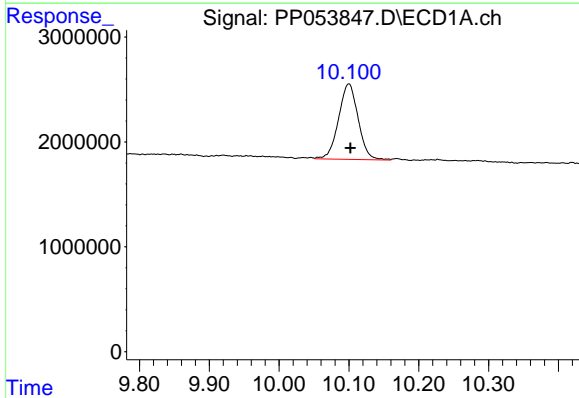
R.T.: 4.339 min
 Delta R.T.: 0.000 min
 Response: 19787664
 Conc: 9.42 ng/ml

Instrument :
 ECD_P
 ClientSampleId :



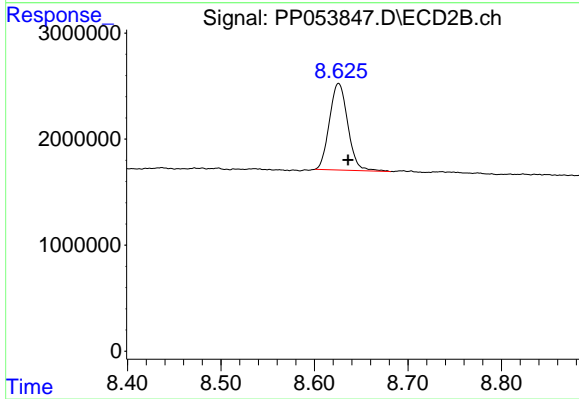
#1 Tetrachloro-m-xylene

R.T.: 3.591 min
 Delta R.T.: -0.003 min
 Response: 13220826
 Conc: 8.47 ng/ml



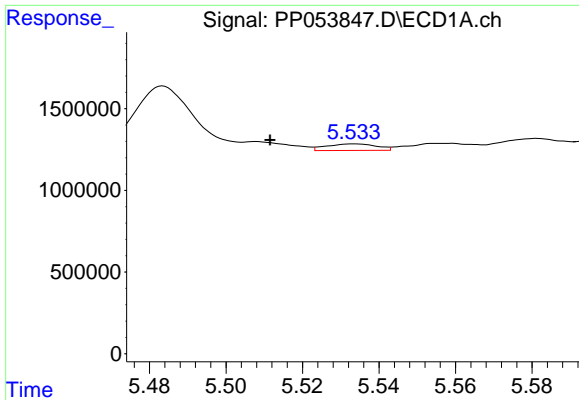
#2 Decachlorobiphenyl

R.T.: 10.100 min
 Delta R.T.: -0.002 min
 Response: 14054618
 Conc: 8.28 ng/ml



#2 Decachlorobiphenyl

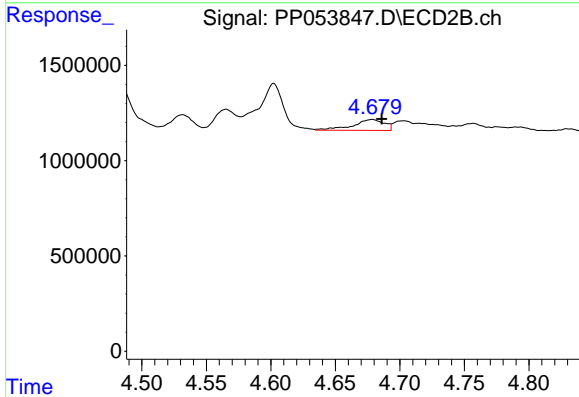
R.T.: 8.626 min
 Delta R.T.: -0.010 min
 Response: 11156568
 Conc: 7.99 ng/ml



#3 AR-1016-1

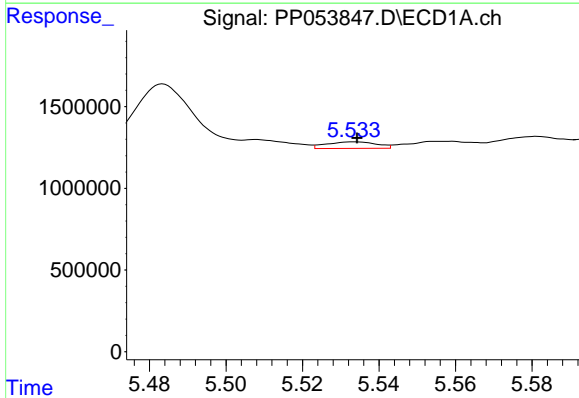
R.T.: 5.534 min
 Delta R.T.: 0.022 min
 Response: 367594
 Conc: 5.42 ng/ml

Instrument :
 ECD_P
 ClientSampleId :



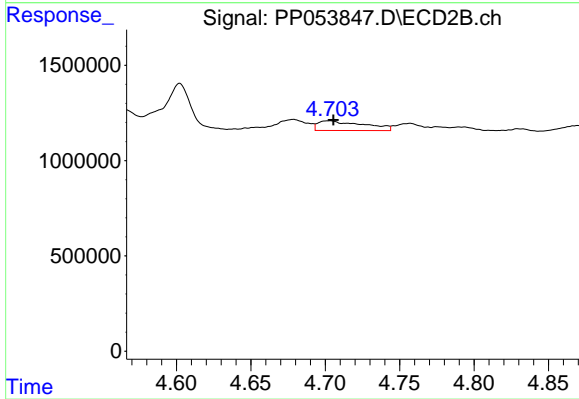
#3 AR-1016-1

R.T.: 4.679 min
 Delta R.T.: -0.007 min
 Response: 967279
 Conc: 21.06 ng/ml



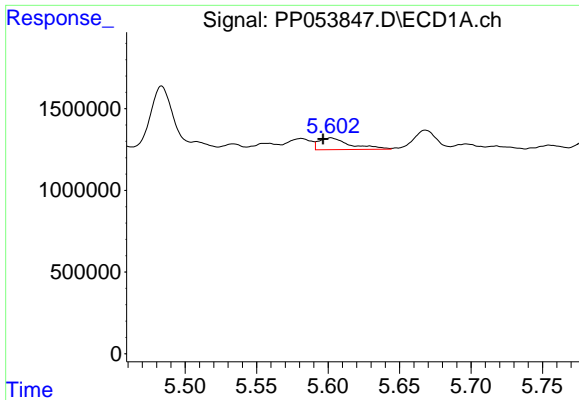
#4 AR-1016-2

R.T.: 5.534 min
 Delta R.T.: 0.000 min
 Response: 367594
 Conc: 3.69 ng/ml



#4 AR-1016-2

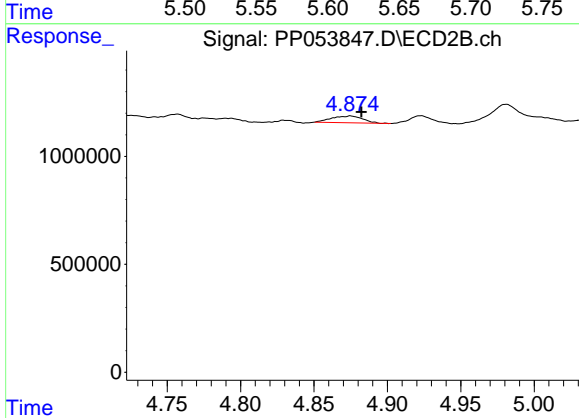
R.T.: 4.703 min
 Delta R.T.: -0.002 min
 Response: 1091742
 Conc: 17.42 ng/ml



#5 AR-1016-3

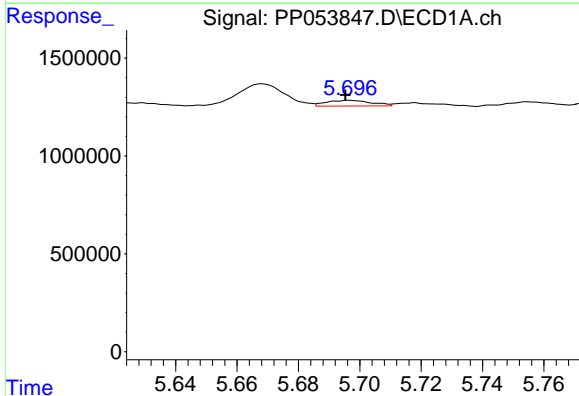
R.T.: 5.602 min
 Delta R.T.: 0.006 min
 Response: 1106661
 Conc: 17.51 ng/ml

Instrument :
 ECD_P
 ClientSampleId :



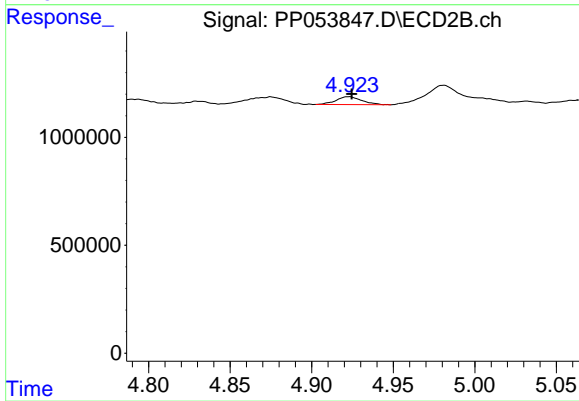
#5 AR-1016-3

R.T.: 4.875 min
 Delta R.T.: -0.007 min
 Response: 460684
 Conc: 13.57 ng/ml



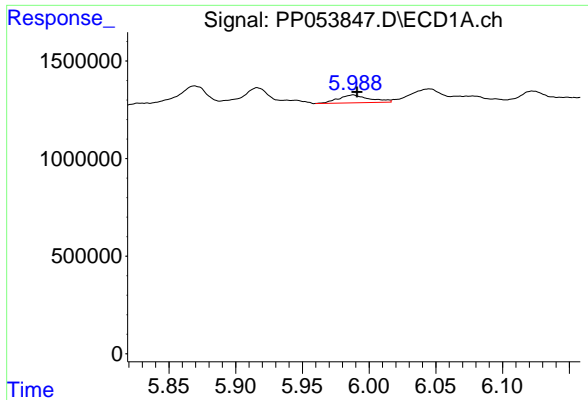
#6 AR-1016-4

R.T.: 5.697 min
 Delta R.T.: 0.001 min
 Response: 297737
 Conc: 6.01 ng/ml



#6 AR-1016-4

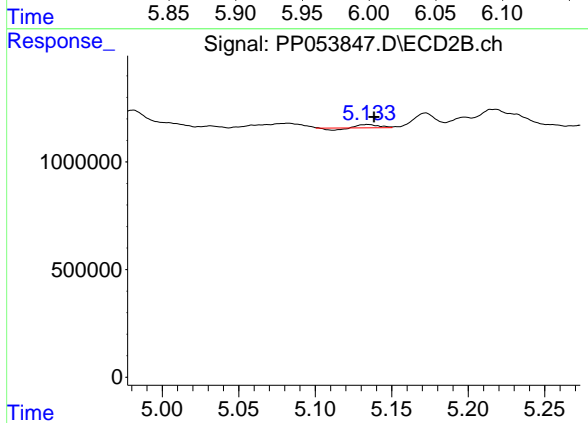
R.T.: 4.923 min
 Delta R.T.: -0.002 min
 Response: 406103
 Conc: 13.63 ng/ml



#7 AR-1016-5

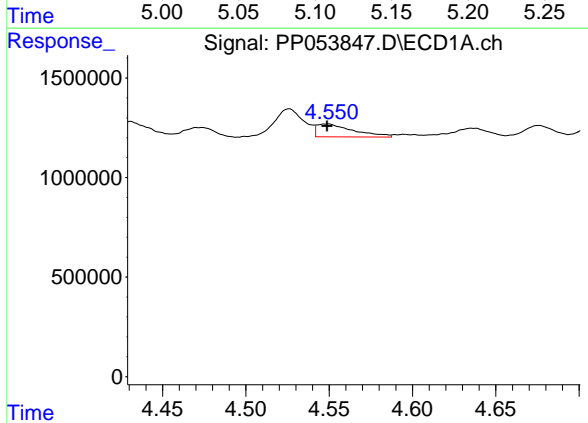
R.T.: 5.988 min
 Delta R.T.: -0.003 min
 Response: 646409
 Conc: 12.28 ng/ml

Instrument :
 ECD_P
 ClientSampleId :



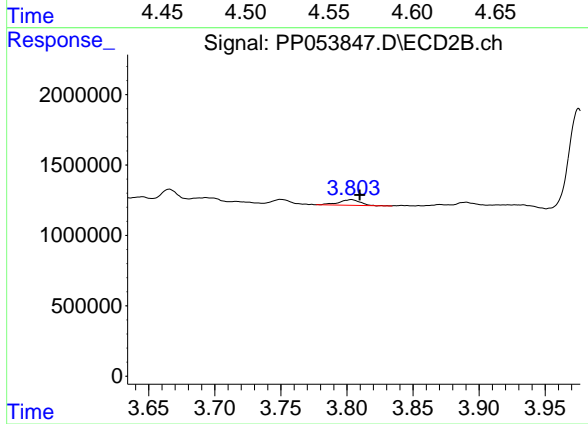
#7 AR-1016-5

R.T.: 5.135 min
 Delta R.T.: -0.004 min
 Response: 85937
 Conc: 2.37 ng/ml



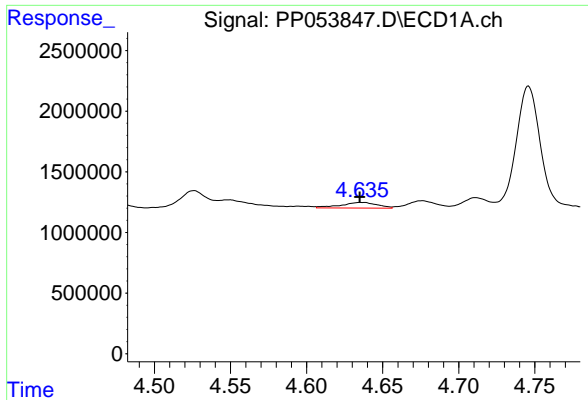
#8 AR-1221-1

R.T.: 4.549 min
 Delta R.T.: 0.000 min
 Response: 991284
 Conc: 38.48 ng/ml



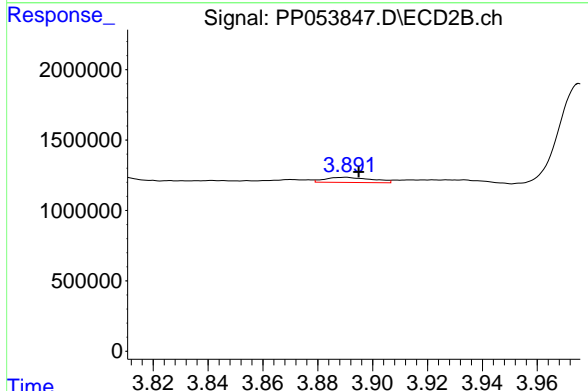
#8 AR-1221-1

R.T.: 3.803 min
 Delta R.T.: -0.006 min
 Response: 462340
 Conc: 23.88 ng/ml

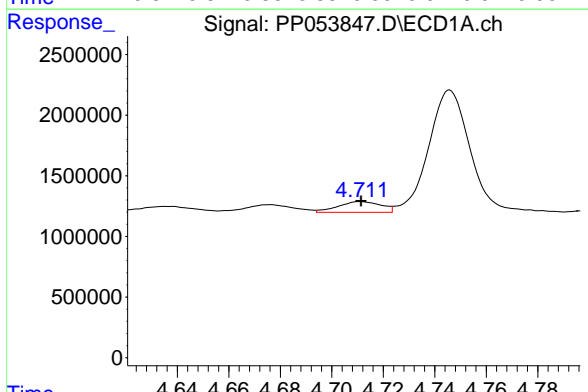


#9 AR-1221-2
 R.T.: 4.636 min
 Delta R.T.: 0.001 min
 Response: 776811
 Conc: 39.90 ng/ml

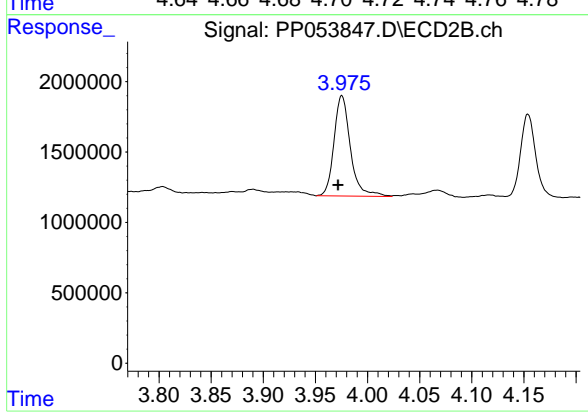
Instrument :
 ECD_P
 ClientSampleId :



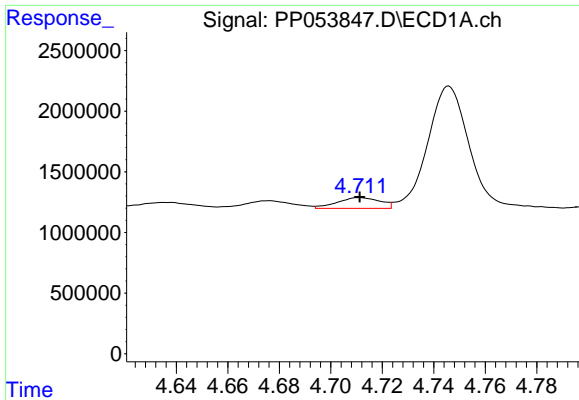
#9 AR-1221-2
 R.T.: 3.890 min
 Delta R.T.: -0.005 min
 Response: 430604
 Conc: 29.46 ng/ml



#10 AR-1221-3
 R.T.: 4.711 min
 Delta R.T.: 0.000 min
 Response: 1029325
 Conc: 17.71 ng/ml



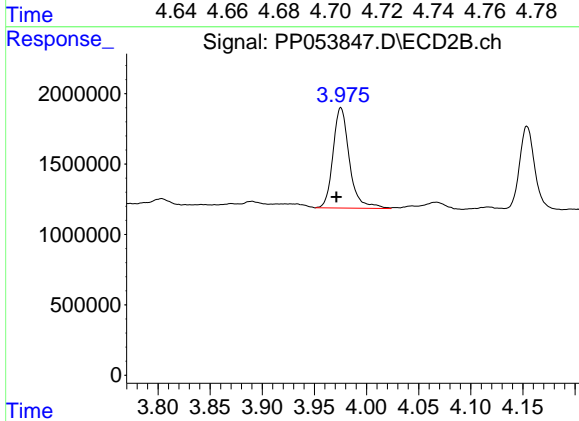
#10 AR-1221-3
 R.T.: 3.975 min
 Delta R.T.: 0.004 min
 Response: 7821742
 Conc: 175.84 ng/ml



#11 AR-1232-1

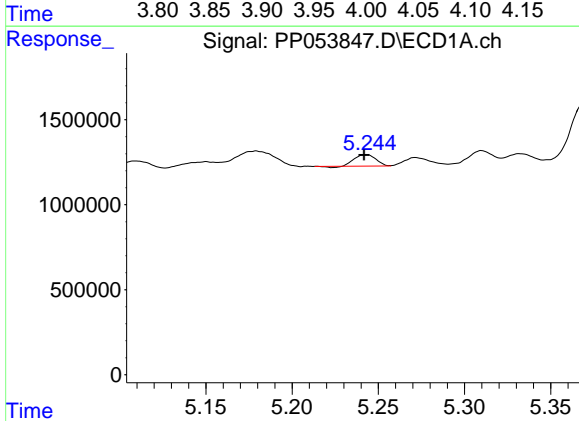
R.T.: 4.711 min
 Delta R.T.: 0.000 min
 Response: 1029325
 Conc: 22.98 ng/ml

Instrument :
 ECD_P
 ClientSampleId :



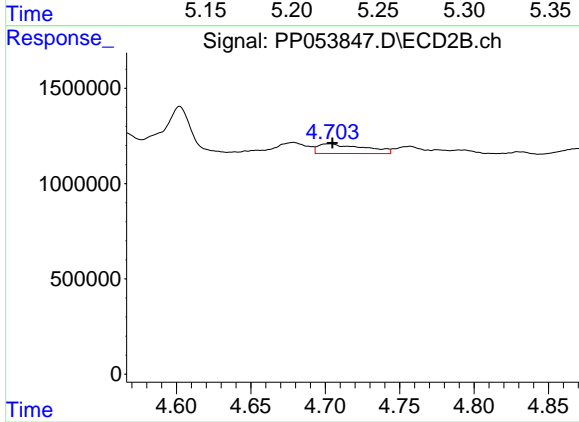
#11 AR-1232-1

R.T.: 3.975 min
 Delta R.T.: 0.004 min
 Response: 7821742
 Conc: 227.30 ng/ml



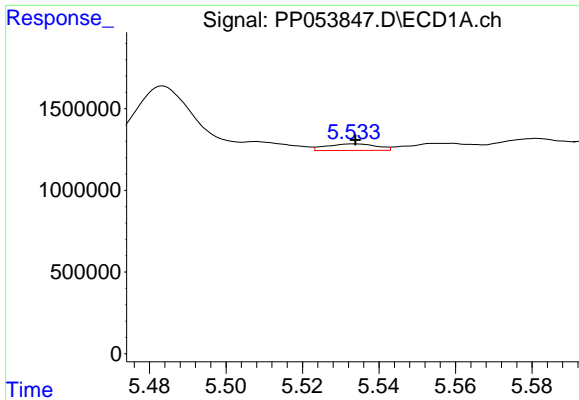
#12 AR-1232-2

R.T.: 5.243 min
 Delta R.T.: 0.000 min
 Response: 570901
 Conc: 22.19 ng/ml



#12 AR-1232-2

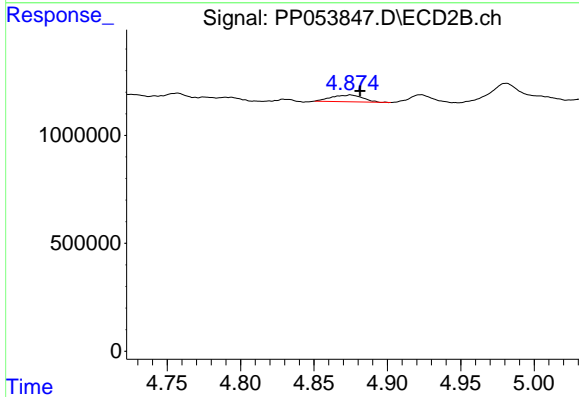
R.T.: 4.703 min
 Delta R.T.: -0.002 min
 Response: 1091742
 Conc: 36.58 ng/ml



#13 AR-1232-3

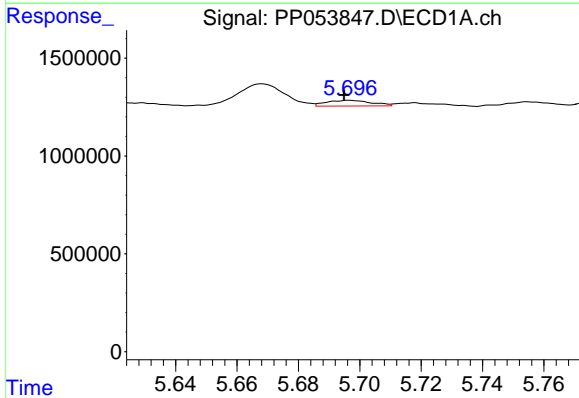
R.T.: 5.534 min
 Delta R.T.: 0.000 min
 Response: 367594
 Conc: 7.83 ng/ml

Instrument :
 ECD_P
 ClientSampleId :



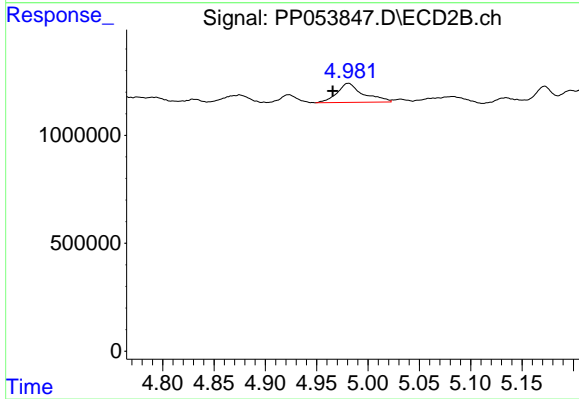
#13 AR-1232-3

R.T.: 4.875 min
 Delta R.T.: -0.007 min
 Response: 460684
 Conc: 29.08 ng/ml



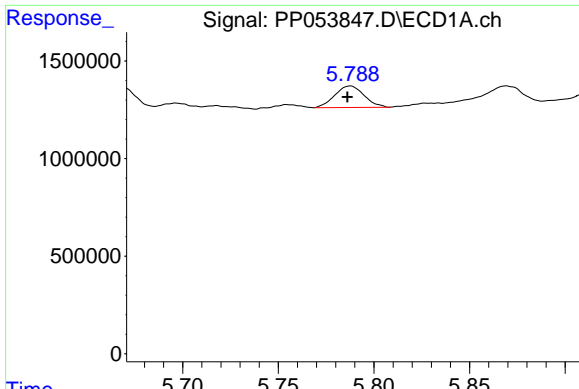
#14 AR-1232-4

R.T.: 5.697 min
 Delta R.T.: 0.002 min
 Response: 297737
 Conc: 12.57 ng/ml



#14 AR-1232-4

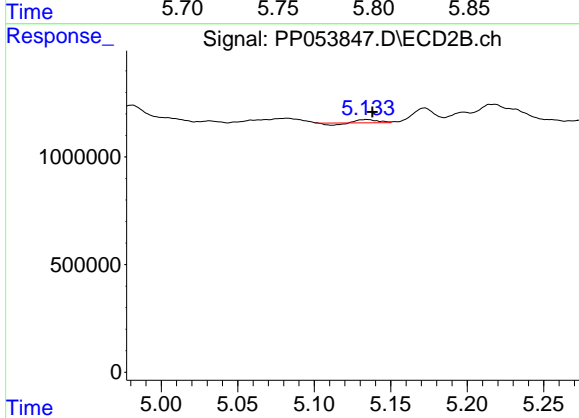
R.T.: 4.981 min
 Delta R.T.: 0.015 min
 Response: 1576616
 Conc: 102.03 ng/ml



#15 AR-1232-5

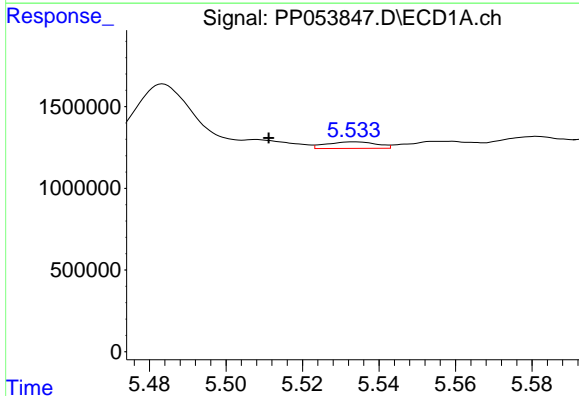
R.T.: 5.788 min
 Delta R.T.: 0.002 min
 Response: 1179949
 Conc: 63.98 ng/ml

Instrument :
 ECD_P
 ClientSampleId :



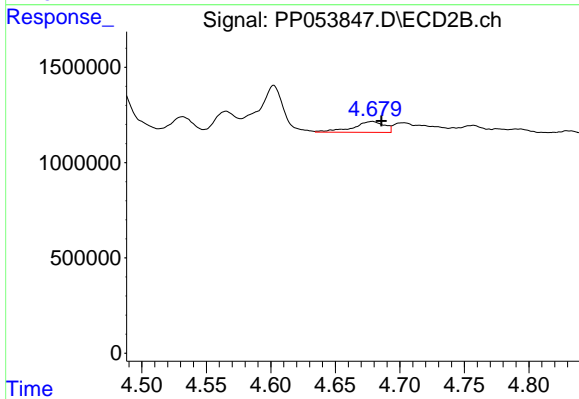
#15 AR-1232-5

R.T.: 5.135 min
 Delta R.T.: -0.003 min
 Response: 85937
 Conc: 5.22 ng/ml



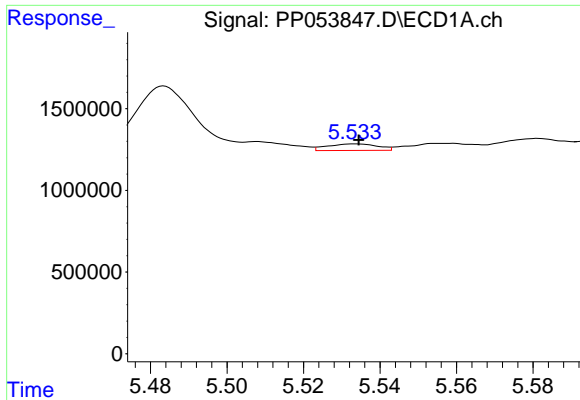
#16 AR-1242-1

R.T.: 5.534 min
 Delta R.T.: 0.022 min
 Response: 367594
 Conc: 7.02 ng/ml



#16 AR-1242-1

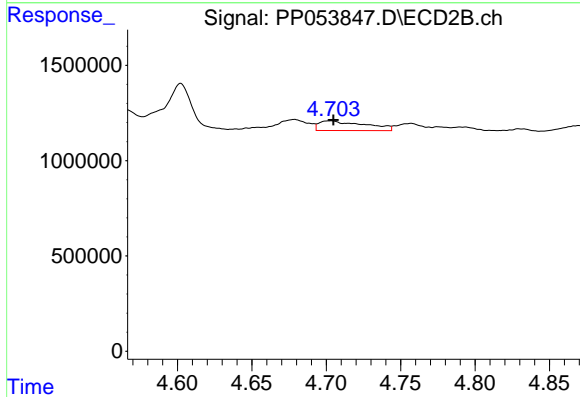
R.T.: 4.679 min
 Delta R.T.: -0.007 min
 Response: 967279
 Conc: 27.31 ng/ml



#17 AR-1242-2

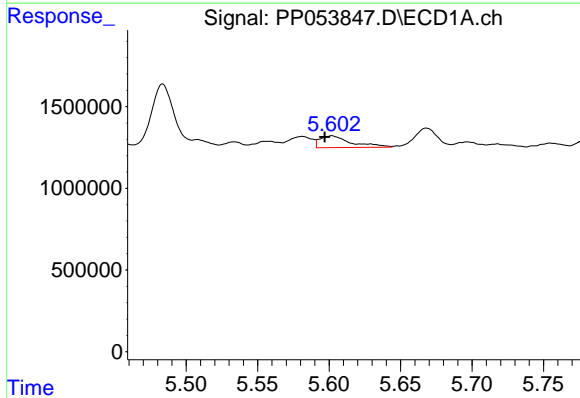
R.T.: 5.534 min
 Delta R.T.: 0.000 min
 Response: 367594
 Conc: 4.82 ng/ml

Instrument :
 ECD_P
 ClientSampleId :



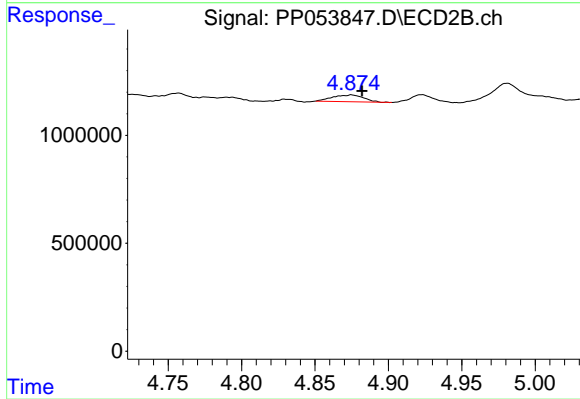
#17 AR-1242-2

R.T.: 4.703 min
 Delta R.T.: -0.002 min
 Response: 1091742
 Conc: 22.72 ng/ml



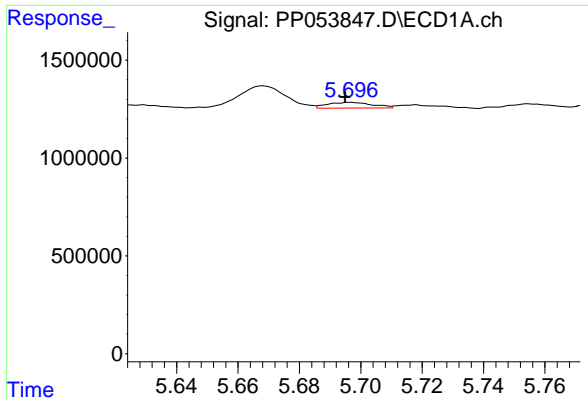
#18 AR-1242-3

R.T.: 5.602 min
 Delta R.T.: 0.005 min
 Response: 1106661
 Conc: 22.59 ng/ml



#18 AR-1242-3

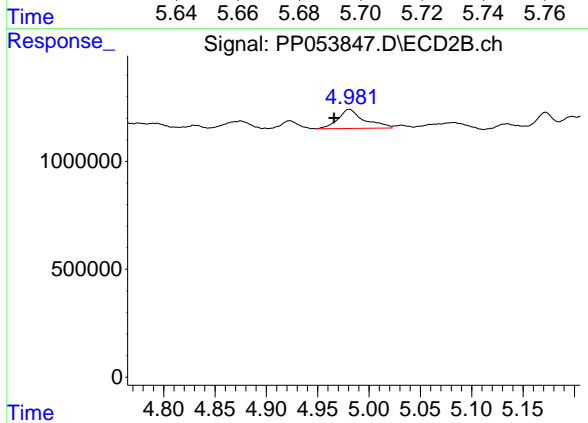
R.T.: 4.875 min
 Delta R.T.: -0.007 min
 Response: 460684
 Conc: 17.67 ng/ml



#19 AR-1242-4

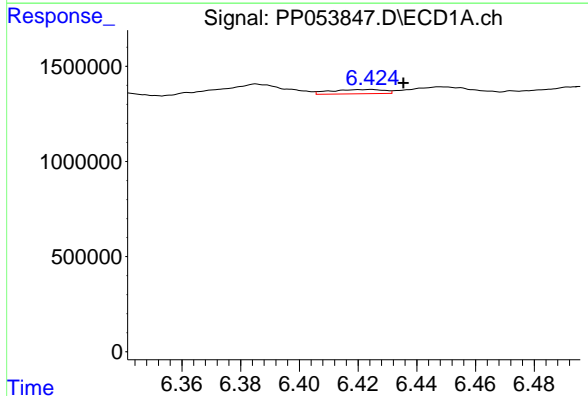
R.T.: 5.697 min
 Delta R.T.: 0.002 min
 Response: 297737
 Conc: 7.76 ng/ml

Instrument :
 ECD_P
 ClientSampleId :



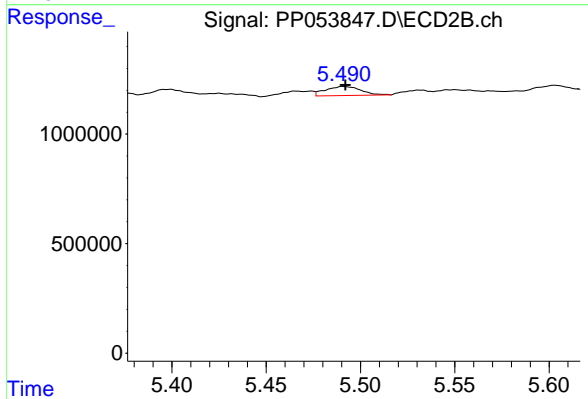
#19 AR-1242-4

R.T.: 4.981 min
 Delta R.T.: 0.015 min
 Response: 1576616
 Conc: 55.26 ng/ml



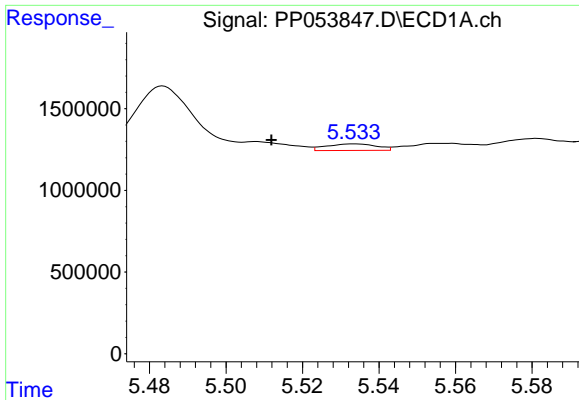
#20 AR-1242-5

R.T.: 6.424 min
 Delta R.T.: -0.011 min
 Response: 288047
 Conc: 7.06 ng/ml



#20 AR-1242-5

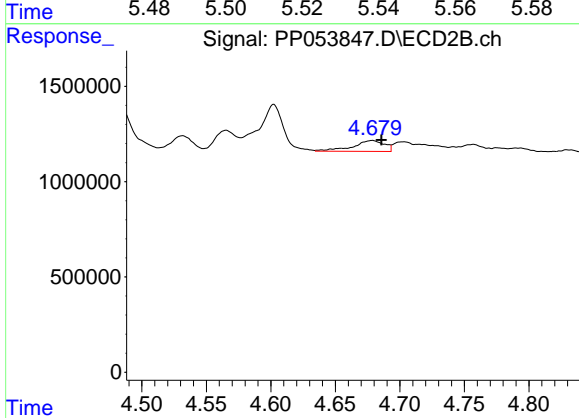
R.T.: 5.491 min
 Delta R.T.: 0.000 min
 Response: 538753
 Conc: 17.65 ng/ml



#21 AR-1248-1

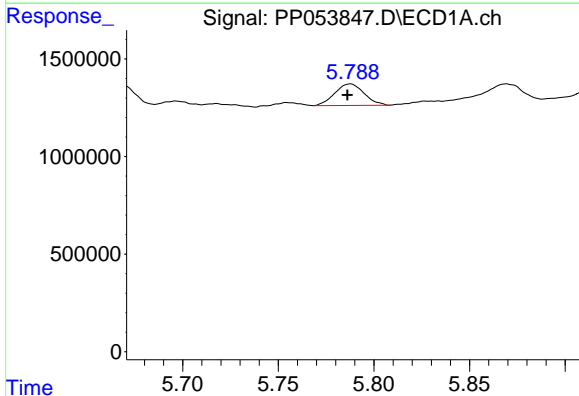
R.T.: 5.534 min
 Delta R.T.: 0.022 min
 Response: 367594
 Conc: 8.72 ng/ml

Instrument :
 ECD_P
 ClientSampleId :



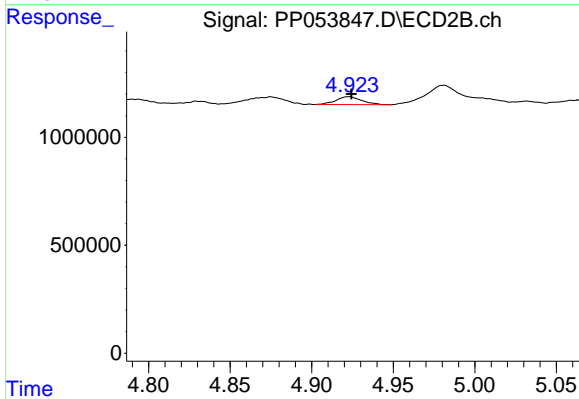
#21 AR-1248-1

R.T.: 4.679 min
 Delta R.T.: -0.007 min
 Response: 967279
 Conc: 34.00 ng/ml



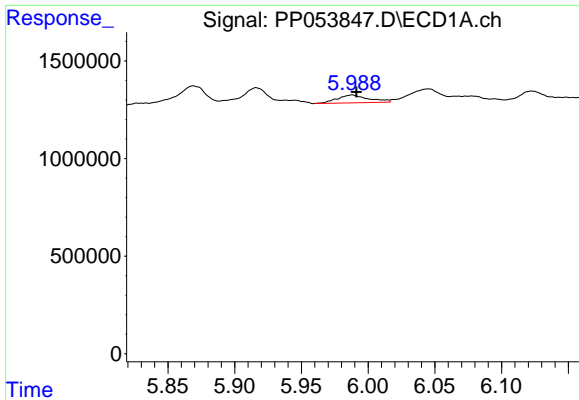
#22 AR-1248-2

R.T.: 5.788 min
 Delta R.T.: 0.002 min
 Response: 1179949
 Conc: 18.67 ng/ml



#22 AR-1248-2

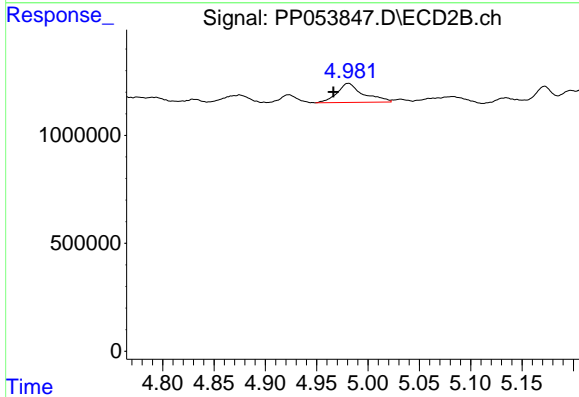
R.T.: 4.923 min
 Delta R.T.: -0.002 min
 Response: 406103
 Conc: 9.82 ng/ml



#23 AR-1248-3

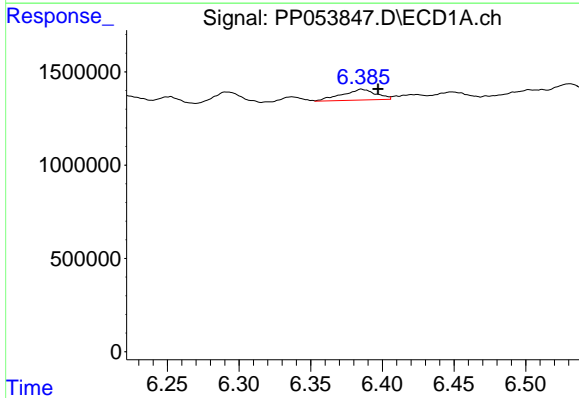
R.T.: 5.988 min
 Delta R.T.: -0.003 min
 Response: 646409
 Conc: 9.23 ng/ml

Instrument :
 ECD_P
 ClientSampleId :



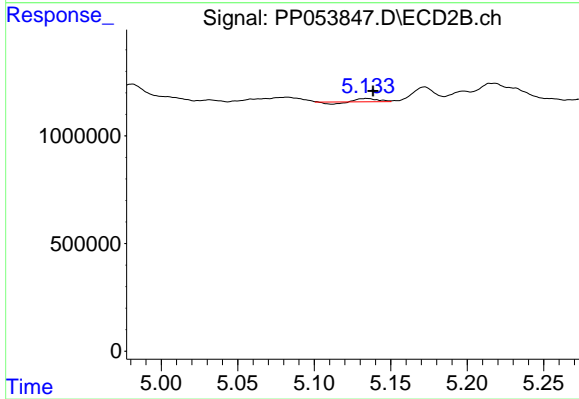
#23 AR-1248-3

R.T.: 4.981 min
 Delta R.T.: 0.015 min
 Response: 1576616
 Conc: 37.54 ng/ml



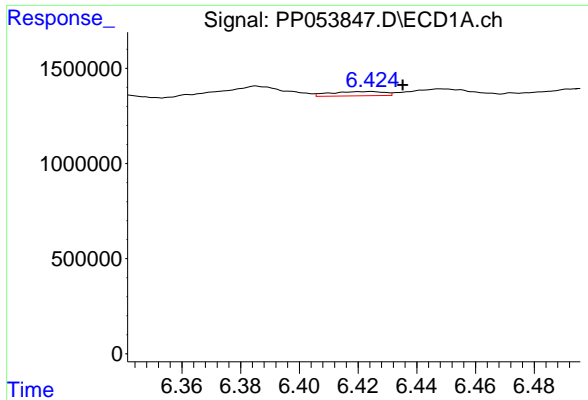
#24 AR-1248-4

R.T.: 6.386 min
 Delta R.T.: -0.012 min
 Response: 951729
 Conc: 13.49 ng/ml



#24 AR-1248-4

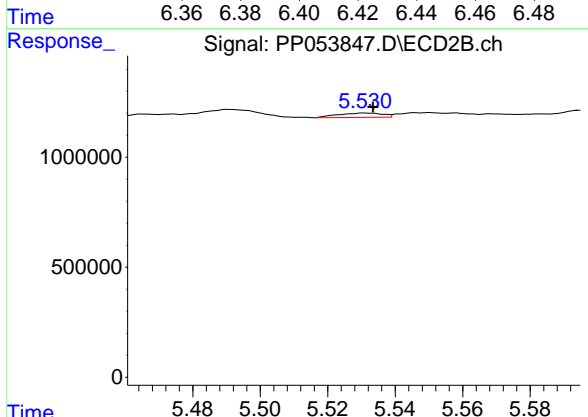
R.T.: 5.135 min
 Delta R.T.: -0.004 min
 Response: 85937
 Conc: 1.79 ng/ml



#25 AR-1248-5

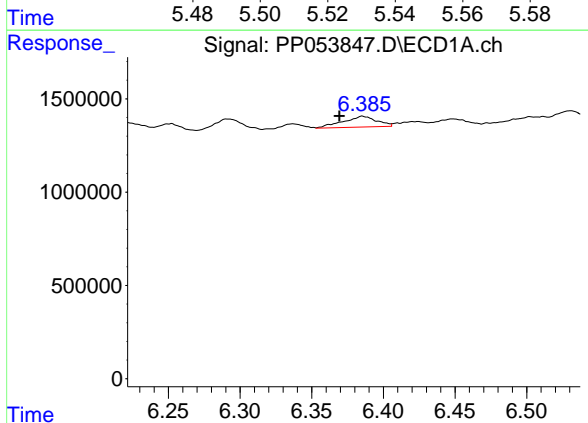
R.T.: 6.424 min
 Delta R.T.: -0.011 min
 Response: 288047
 Conc: 4.09 ng/ml

Instrument :
 ECD_P
 ClientSampleId :



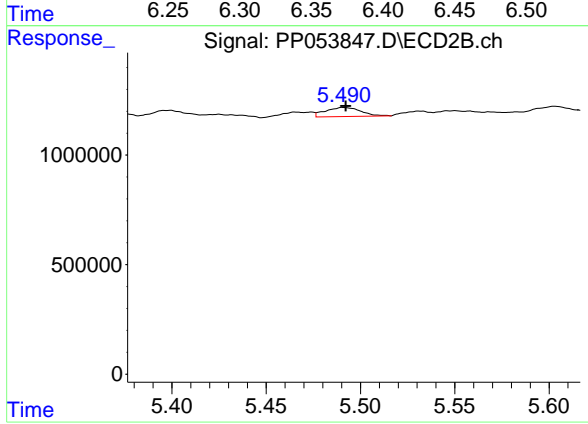
#25 AR-1248-5

R.T.: 5.532 min
 Delta R.T.: -0.002 min
 Response: 184181
 Conc: 4.91 ng/ml



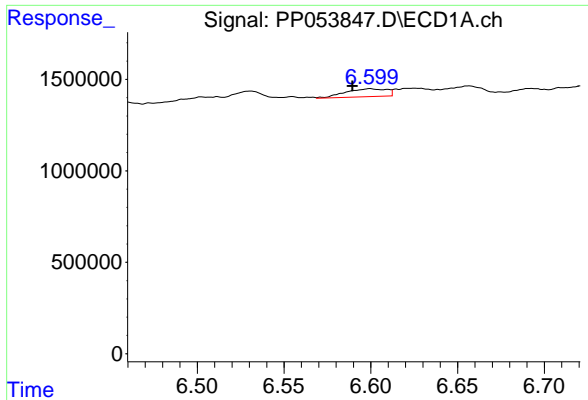
#26 AR-1254-1

R.T.: 6.386 min
 Delta R.T.: 0.016 min
 Response: 951729
 Conc: 12.28 ng/ml



#26 AR-1254-1

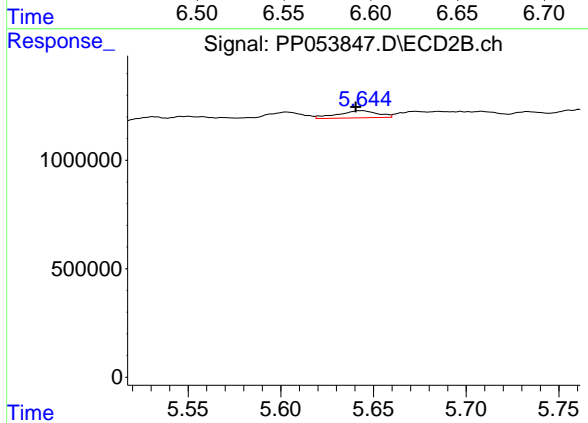
R.T.: 5.491 min
 Delta R.T.: 0.000 min
 Response: 538753
 Conc: 8.23 ng/ml



#27 AR-1254-2

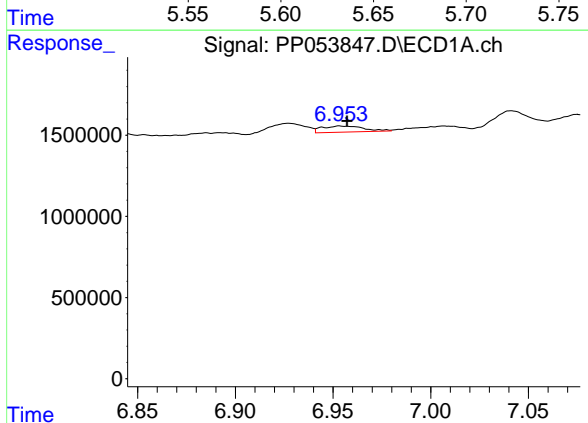
R.T.: 6.600 min
 Delta R.T.: 0.010 min
 Response: 721150
 Conc: 6.20 ng/ml

Instrument :
 ECD_P
 ClientSampleId :



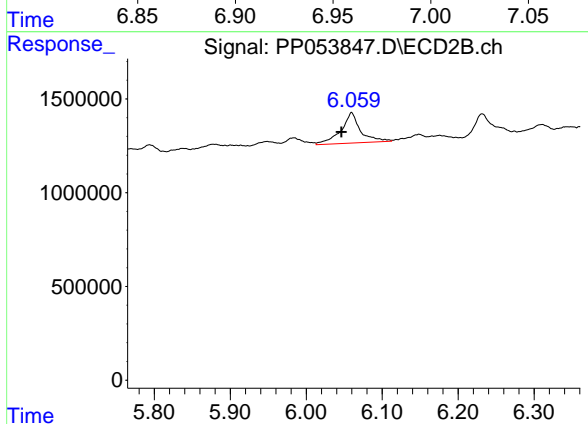
#27 AR-1254-2

R.T.: 5.643 min
 Delta R.T.: 0.003 min
 Response: 492258
 Conc: 8.44 ng/ml



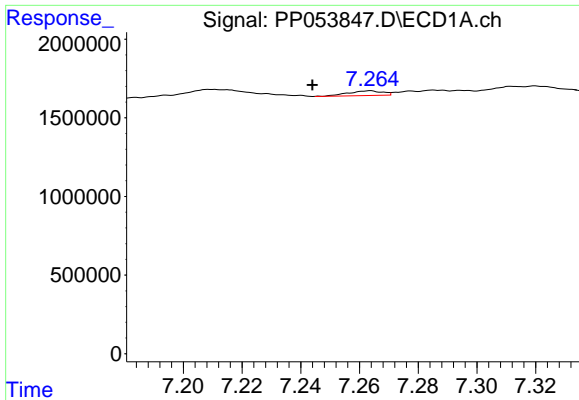
#28 AR-1254-3

R.T.: 6.954 min
 Delta R.T.: -0.004 min
 Response: 570660
 Conc: 4.87 ng/ml



#28 AR-1254-3

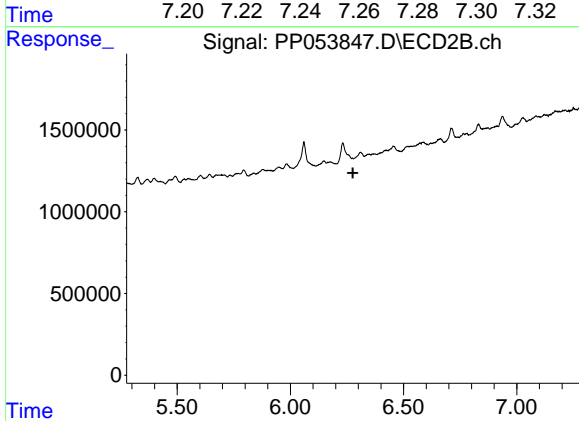
R.T.: 6.060 min
 Delta R.T.: 0.013 min
 Response: 2889606
 Conc: 32.85 ng/ml



#29 AR-1254-4

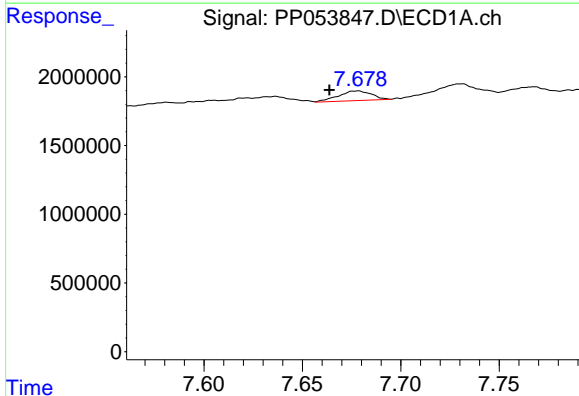
R.T.: 7.263 min
 Delta R.T.: 0.019 min
 Response: 238578
 Conc: 3.01 ng/ml

Instrument :
 ECD_P
 ClientSampleId :



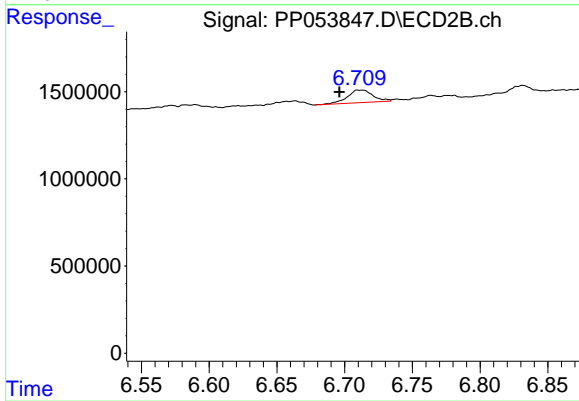
#29 AR-1254-4

R.T.: 0.000 min
 Exp R.T. : 6.276 min
 Response: 0
 Conc: N.D.



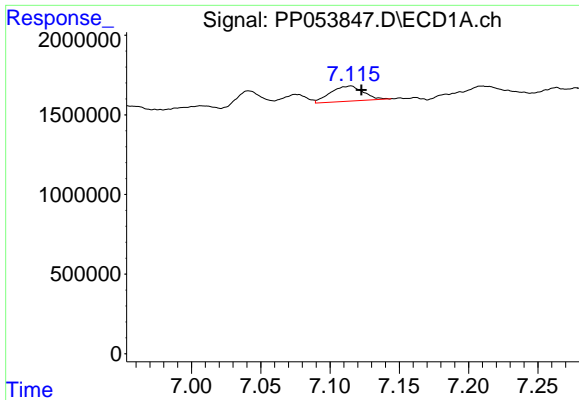
#30 AR-1254-5

R.T.: 7.678 min
 Delta R.T.: 0.014 min
 Response: 814687
 Conc: 8.35 ng/ml



#30 AR-1254-5

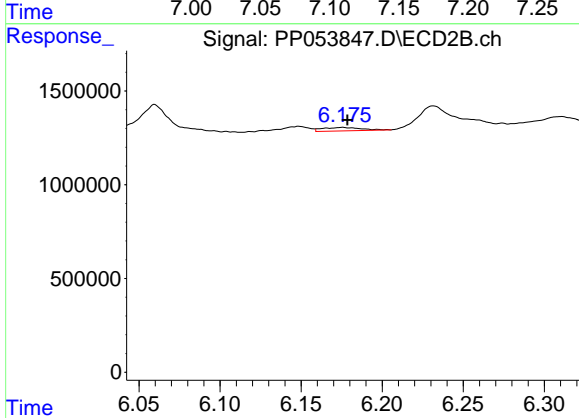
R.T.: 6.711 min
 Delta R.T.: 0.015 min
 Response: 951189
 Conc: 12.21 ng/ml



#31 AR-1260-1

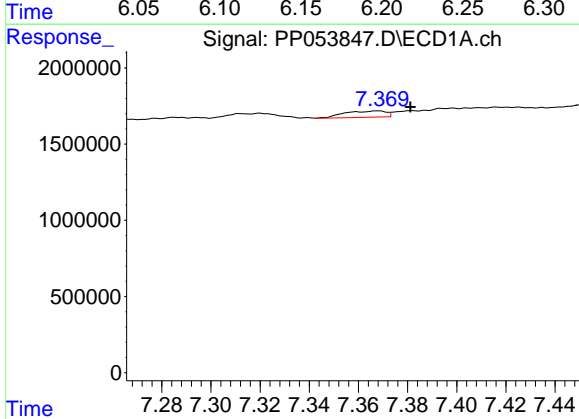
R.T.: 7.115 min
 Delta R.T.: -0.008 min
 Response: 1577808
 Conc: 16.34 ng/ml

Instrument :
 ECD_P
 ClientSampleId :



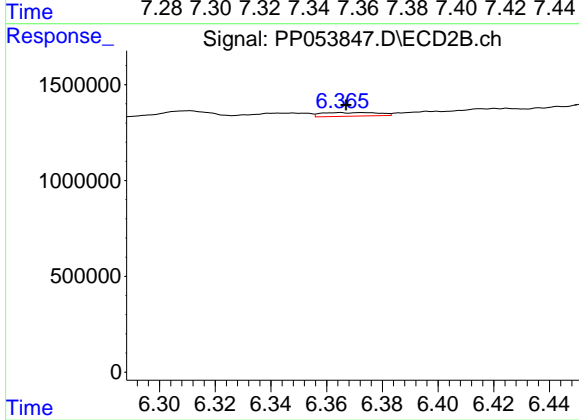
#31 AR-1260-1

R.T.: 6.175 min
 Delta R.T.: -0.003 min
 Response: 306557
 Conc: 4.70 ng/ml



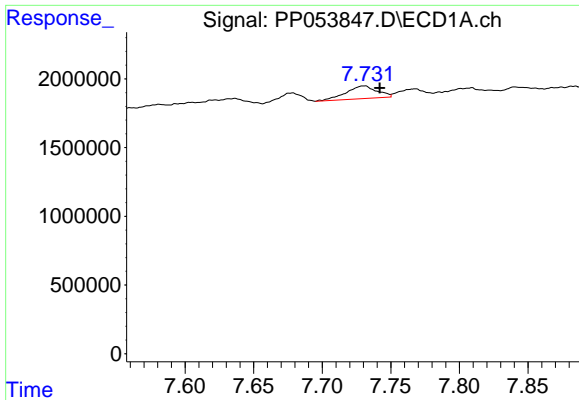
#32 AR-1260-2

R.T.: 7.368 min
 Delta R.T.: -0.013 min
 Response: 482716
 Conc: 4.37 ng/ml



#32 AR-1260-2

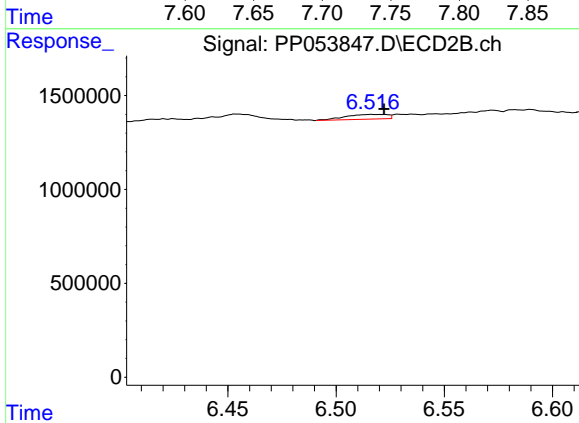
R.T.: 6.365 min
 Delta R.T.: -0.002 min
 Response: 272342
 Conc: 3.62 ng/ml



#33 AR-1260-3

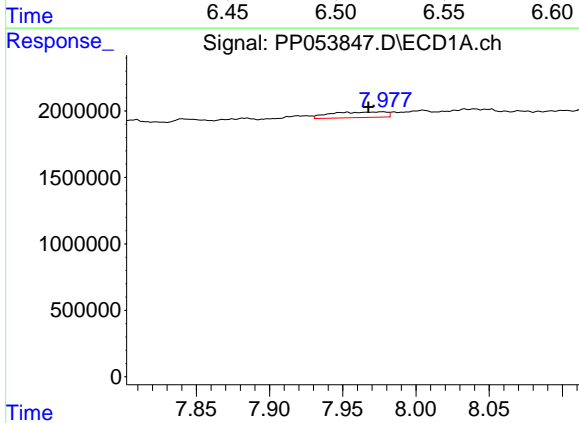
R.T.: 7.731 min
 Delta R.T.: -0.011 min
 Response: 1447652
 Conc: 19.15 ng/ml

Instrument :
 ECD_P
 ClientSampleId :



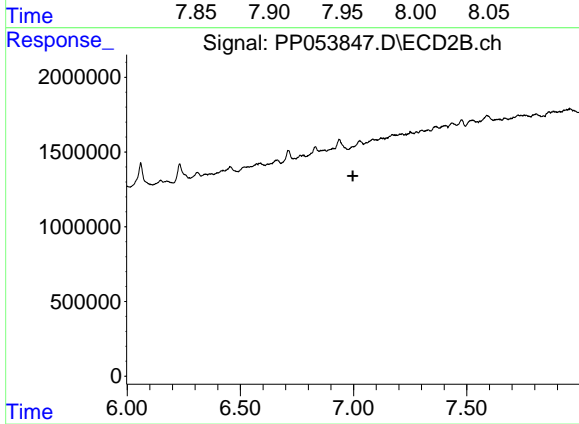
#33 AR-1260-3

R.T.: 6.517 min
 Delta R.T.: -0.005 min
 Response: 342991
 Conc: 4.73 ng/ml



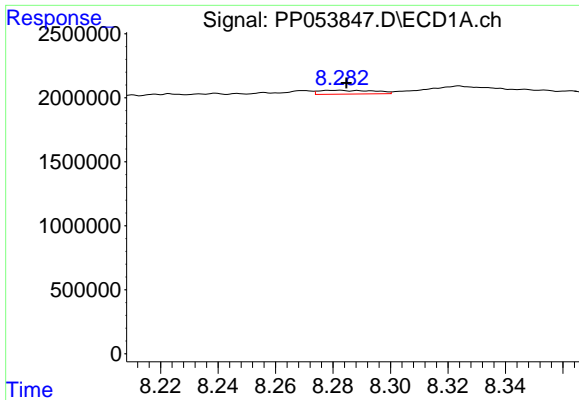
#34 AR-1260-4

R.T.: 7.977 min
 Delta R.T.: 0.010 min
 Response: 1115776
 Conc: 11.89 ng/ml



#34 AR-1260-4

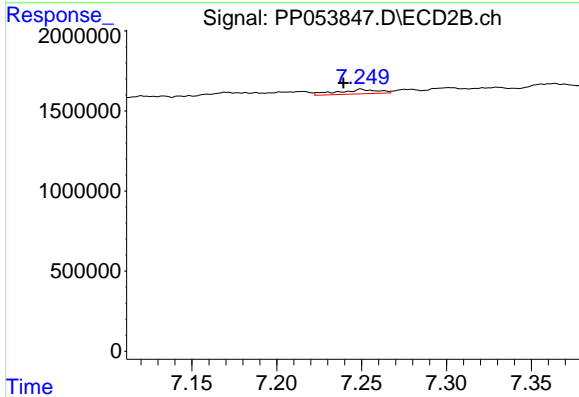
R.T.: 0.000 min
 Exp R.T. : 6.997 min
 Response: 0
 Conc: N.D.



#35 AR-1260-5

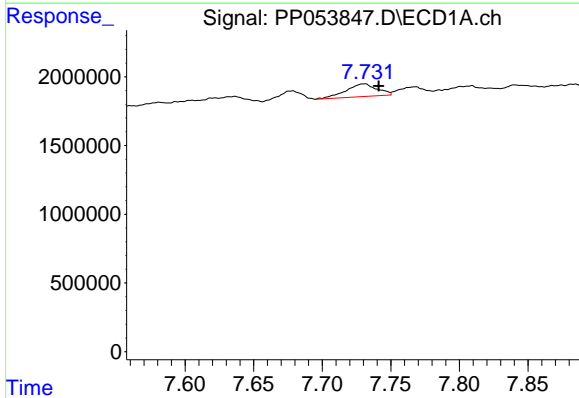
R.T.: 8.282 min
 Delta R.T.: -0.003 min
 Response: 400407
 Conc: 2.53 ng/ml

Instrument :
 ECD_P
 ClientSampleId :



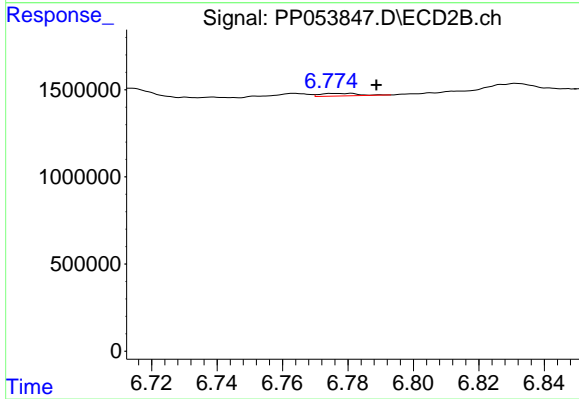
#35 AR-1260-5

R.T.: 7.250 min
 Delta R.T.: 0.011 min
 Response: 469855
 Conc: 3.93 ng/ml



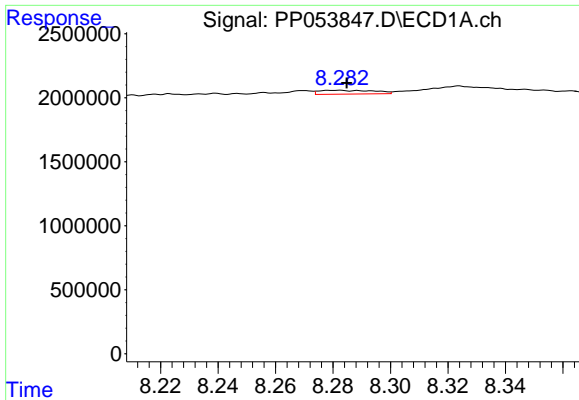
#36 AR-1262-1

R.T.: 7.731 min
 Delta R.T.: -0.011 min
 Response: 1447652
 Conc: 12.09 ng/ml



#36 AR-1262-1

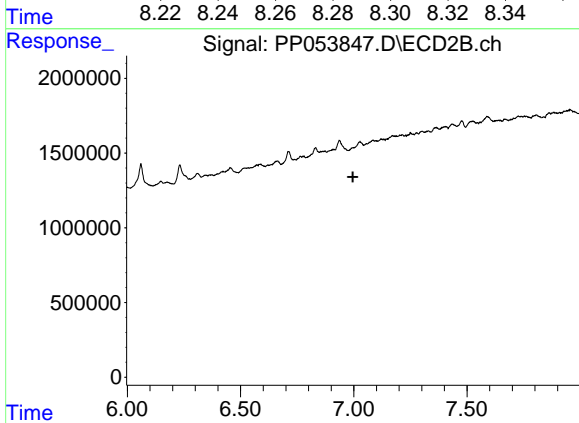
R.T.: 6.776 min
 Delta R.T.: -0.013 min
 Response: 124058
 Conc: 3.48 ng/ml



#37 AR-1262-2

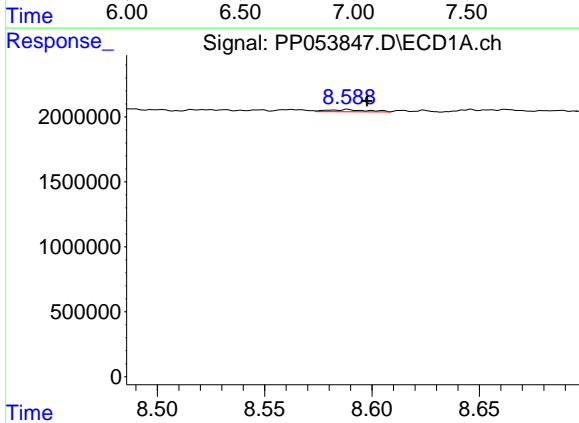
R.T.: 8.282 min
 Delta R.T.: -0.003 min
 Response: 400407
 Conc: 2.09 ng/ml

Instrument :
 ECD_P
 ClientSampleId :



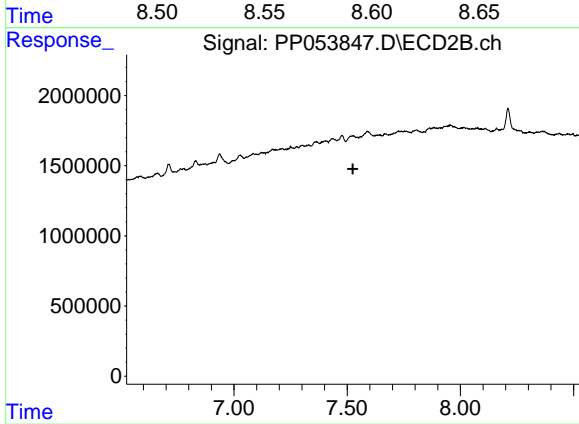
#37 AR-1262-2

R.T.: 0.000 min
 Exp R.T. : 6.996 min
 Response: 0
 Conc: N.D.



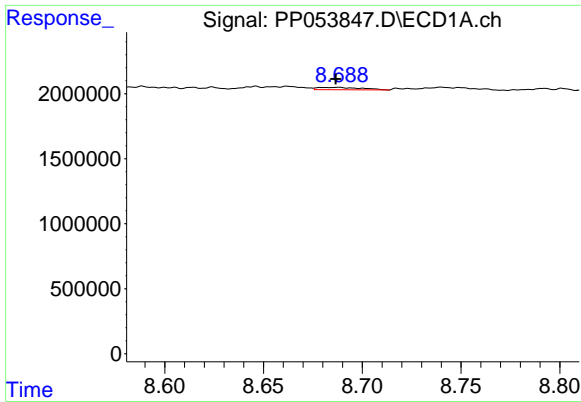
#38 AR-1262-3

R.T.: 8.589 min
 Delta R.T.: -0.009 min
 Response: 227951
 Conc: 1.65 ng/ml



#38 AR-1262-3

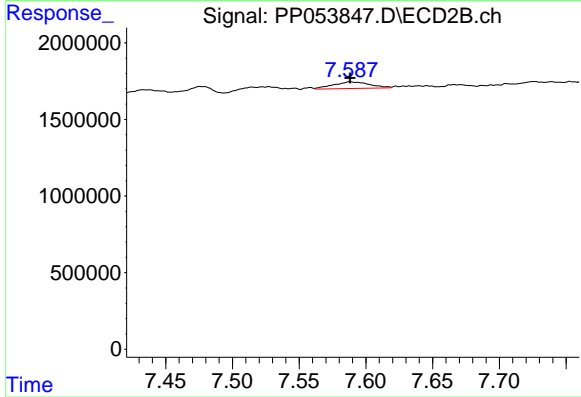
R.T.: 7.527 min
 Delta R.T.: 0.002 min
 Response: -161019
 Conc: N.D.



#39 AR-1262-4

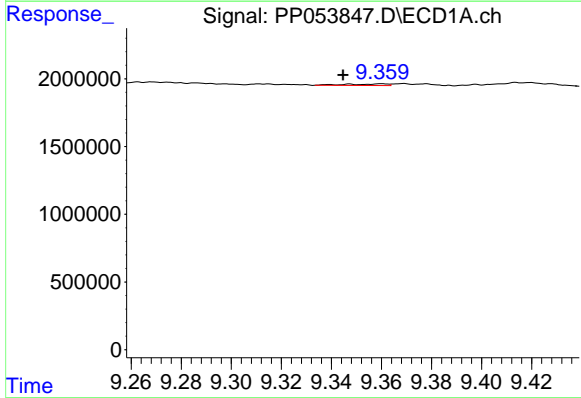
R.T.: 8.688 min
 Delta R.T.: 0.002 min
 Response: 280349
 Conc: 4.50 ng/ml

Instrument :
 ECD_P
 ClientSampleId :



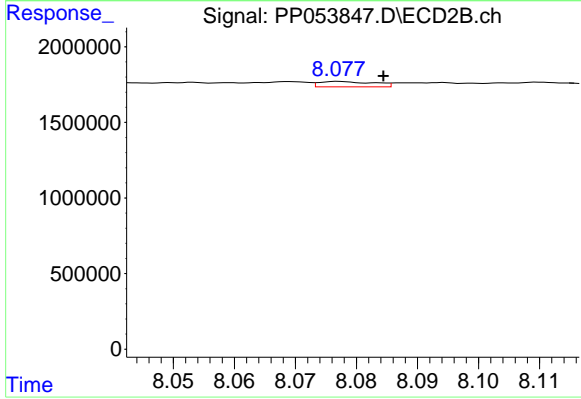
#39 AR-1262-4

R.T.: 7.588 min
 Delta R.T.: 0.000 min
 Response: 824861
 Conc: 7.21 ng/ml



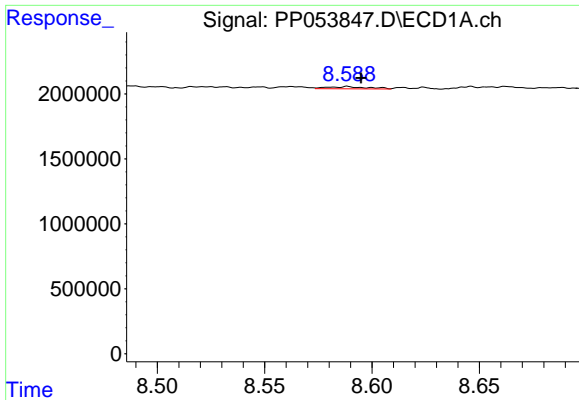
#40 AR-1262-5

R.T.: 9.360 min
 Delta R.T.: 0.015 min
 Response: 138106
 Conc: 1.95 ng/ml



#40 AR-1262-5

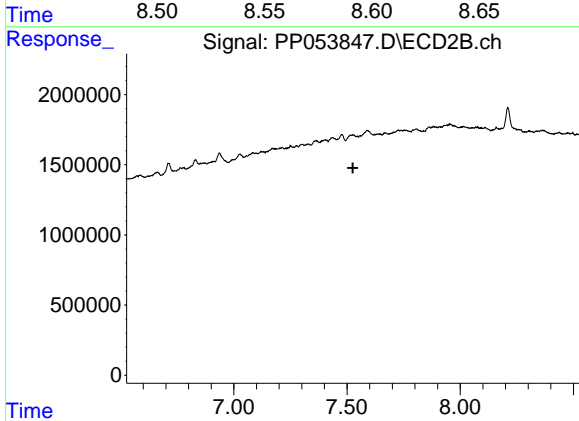
R.T.: 8.077 min
 Delta R.T.: -0.007 min
 Response: 223244
 Conc: 4.48 ng/ml



#41 AR-1268-1

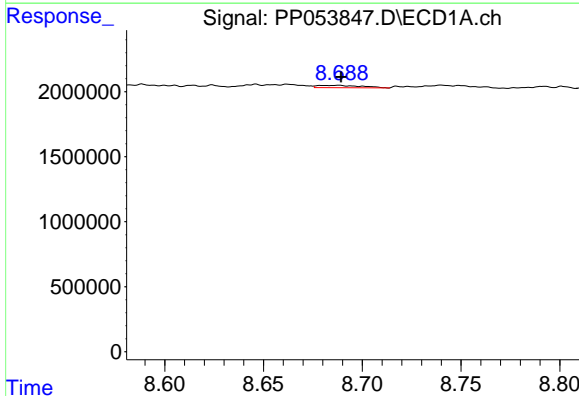
R.T.: 8.589 min
 Delta R.T.: -0.006 min
 Response: 227951
 Conc: 0.93 ng/ml

Instrument :
 ECD_P
 ClientSampleId :



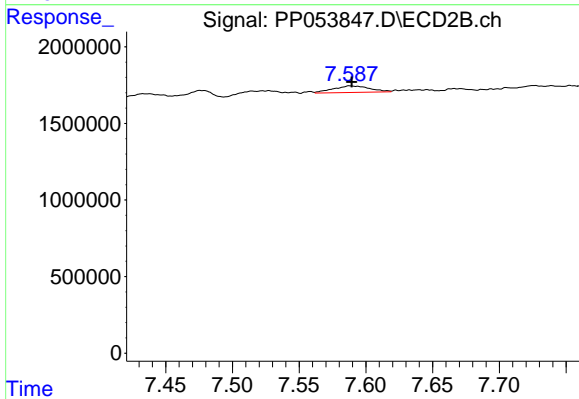
#41 AR-1268-1

R.T.: 7.527 min
 Delta R.T.: 0.001 min
 Response: -161019
 Conc: N.D.



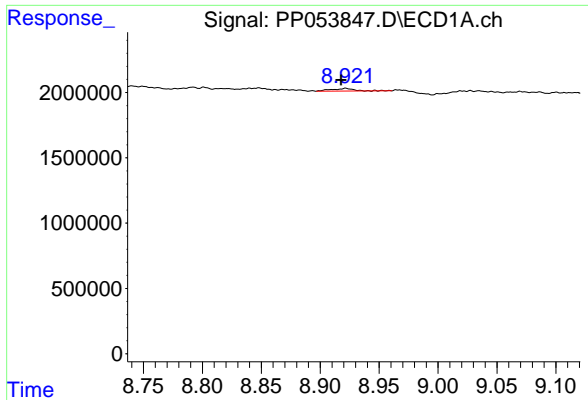
#42 AR-1268-2

R.T.: 8.688 min
 Delta R.T.: -0.001 min
 Response: 280349
 Conc: 1.23 ng/ml



#42 AR-1268-2

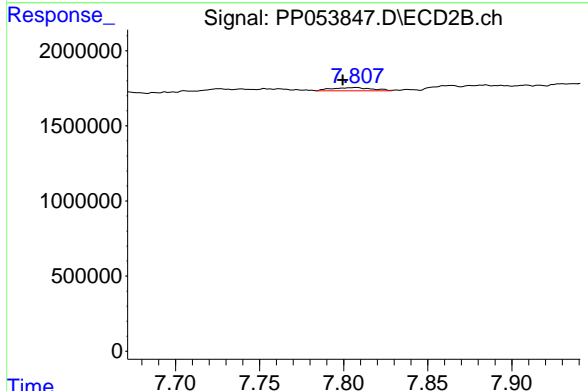
R.T.: 7.588 min
 Delta R.T.: 0.000 min
 Response: 824861
 Conc: 4.83 ng/ml



#43 AR-1268-3

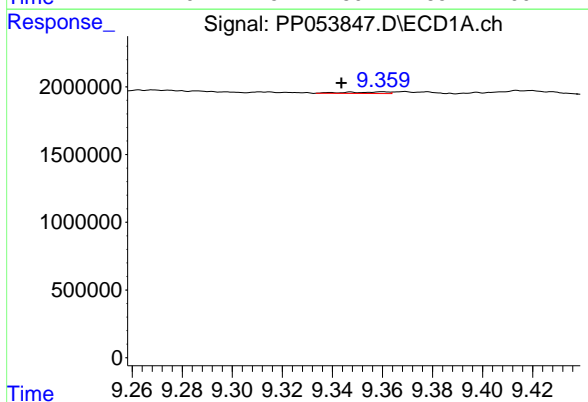
R.T.: 8.922 min
 Delta R.T.: 0.004 min
 Response: 271592
 Conc: 1.42 ng/ml

Instrument :
 ECD_P
 ClientSampleId :



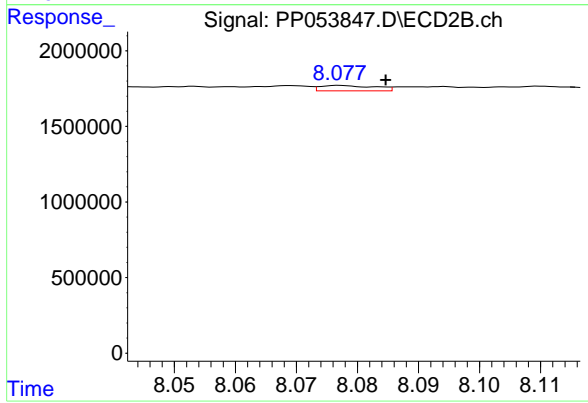
#43 AR-1268-3

R.T.: 7.807 min
 Delta R.T.: 0.008 min
 Response: 362286
 Conc: 2.45 ng/ml



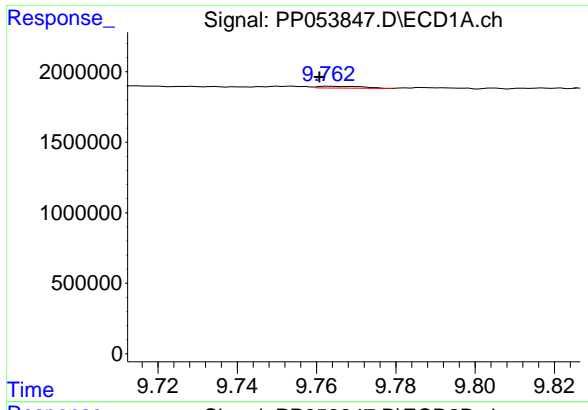
#44 AR-1268-4

R.T.: 9.360 min
 Delta R.T.: 0.017 min
 Response: 138106
 Conc: 1.79 ng/ml



#44 AR-1268-4

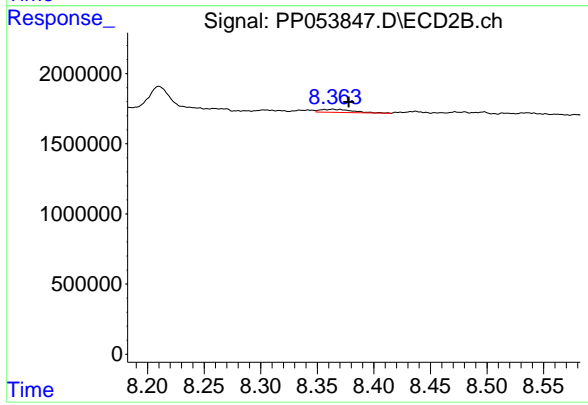
R.T.: 8.077 min
 Delta R.T.: -0.007 min
 Response: 223244
 Conc: 4.01 ng/ml



#45 AR-1268-5

R.T.: 9.763 min
Delta R.T.: 0.003 min
Response: 101833
Conc: 0.17 ng/ml

Instrument :
ECD_P
ClientSampleId :



#45 AR-1268-5

R.T.: 8.364 min
Delta R.T.: -0.014 min
Response: 442081
Conc: 0.94 ng/ml