

Data Path : Z:\pestpcbsrv\HPCHEM1\ECD\_P\Data\PP121922\  
 Data File : PP053825.D  
 Signal(s) : Signal #1: ECD1A.ch Signal #2: ECD2B.ch  
 Acq On : 19 Dec 2022 13:29  
 Operator : YP\AJ  
 Sample : PB149726BL  
 Misc :  
 ALS Vial : 9 Sample Multiplier: 1

**Instrument :**  
 ECD\_P  
**ClientSampleId :**  
 PB149726BL

Integration File signal 1: autoint1.e  
 Integration File signal 2: autoint2.e  
 Quant Time: Dec 20 03:17:18 2022  
 Quant Method : Z:\pestpcbsrv\HPCHEM1\ECD\_P\methods\PP121322.M  
 Quant Title : GC EXTRACTABLES  
 QLast Update : Wed Dec 14 05:38:40 2022  
 Response via : Initial Calibration  
 Integrator: ChemStation

Volume Inj. : 2 µl  
 Signal #1 Phase : ZB-MR1 Signal #2 Phase: ZB-MR2  
 Signal #1 Info : 30Mx0.32mmx 0.50µ Signal #2 Info : 30M x 0.32mm x 0.25µm

Compound	RT#1	RT#2	Resp#1	Resp#2	ng/ml	ng/ml
-----						
System Monitoring Compounds						
1) SA Tetrachlo...	4.341	3.592	44387315	30495444	21.139	19.527
2) SA Decachlor...	10.104	8.630	37916259	31614584	22.333	22.634

Target Compounds

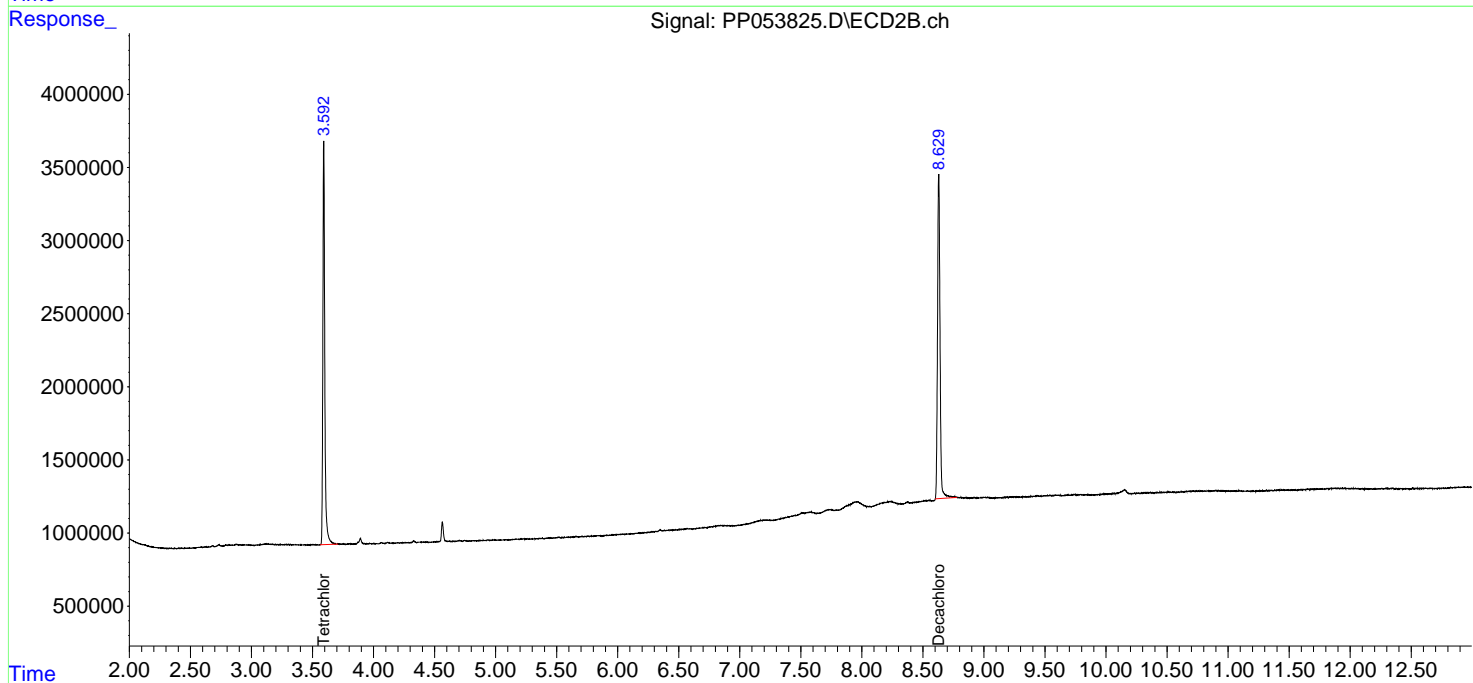
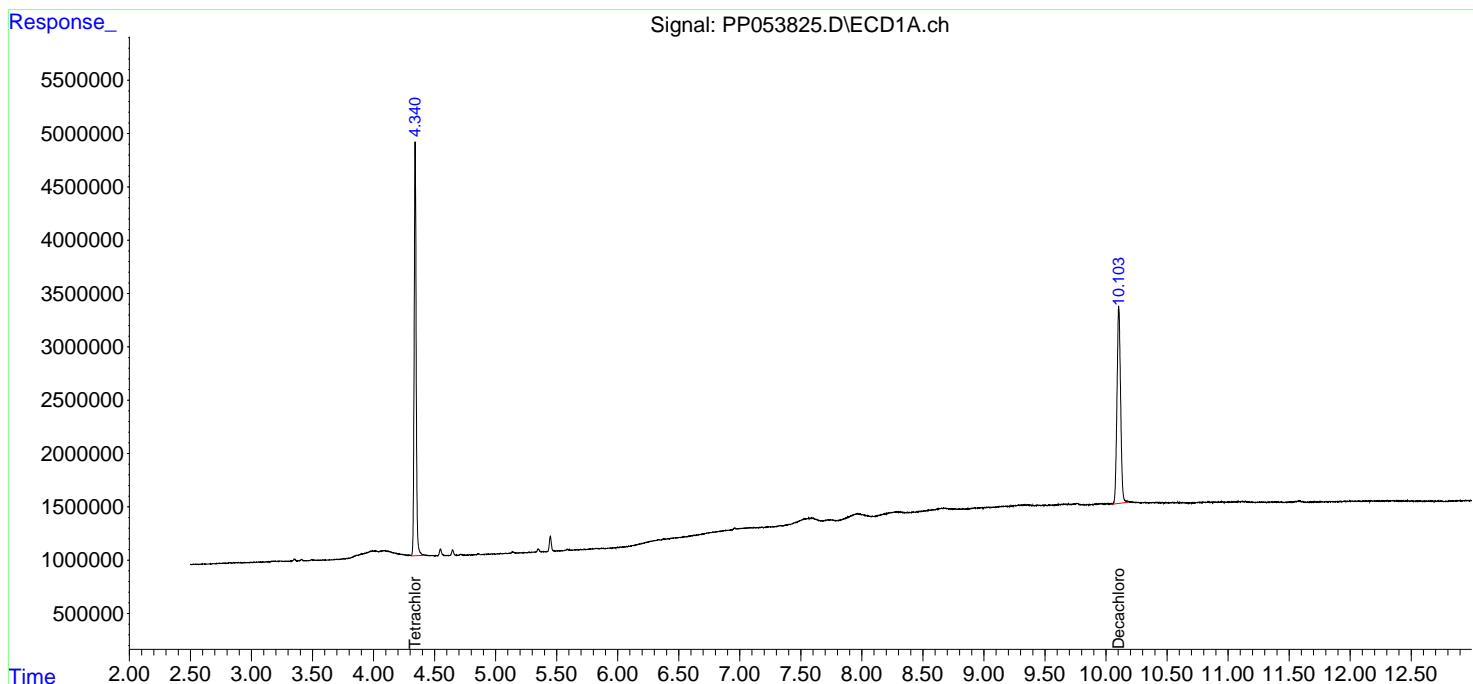
(f)=RT Delta > 1/2 Window (#)=Amounts differ by > 25% (m)=manual int.

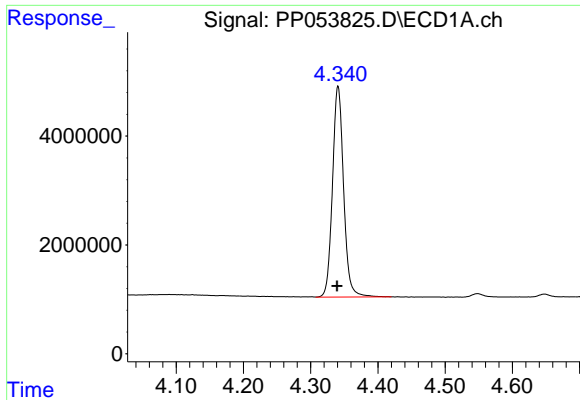
Data Path : Z:\pestpcbsrv\HPCHEM1\ECD\_P\Data\PP121922\  
 Data File : PP053825.D  
 Signal(s) : Signal #1: ECD1A.ch Signal #2: ECD2B.ch  
 Acq On : 19 Dec 2022 13:29  
 Operator : YP\AJ  
 Sample : PB149726BL  
 Misc :  
 ALS Vial : 9 Sample Multiplier: 1

Instrument :  
 ECD\_P  
 ClientSampleId :  
 PB149726BL

Integration File signal 1: autoint1.e  
 Integration File signal 2: autoint2.e  
 Quant Time: Dec 20 03:17:18 2022  
 Quant Method : Z:\pestpcbsrv\HPCHEM1\ECD\_P\methods\PP121322.M  
 Quant Title : GC EXTRACTABLES  
 QLast Update : Wed Dec 14 05:38:40 2022  
 Response via : Initial Calibration  
 Integrator: ChemStation

Volume Inj. : 2 µl  
 Signal #1 Phase : ZB-MR1 Signal #2 Phase: ZB-MR2  
 Signal #1 Info : 30Mx0.32mmx 0.50µ Signal #2 Info : 30M x 0.32mm x 0.25µm

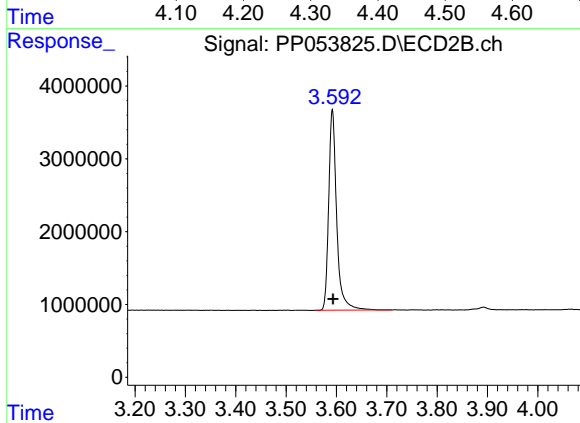




#1 Tetrachloro-m-xylene

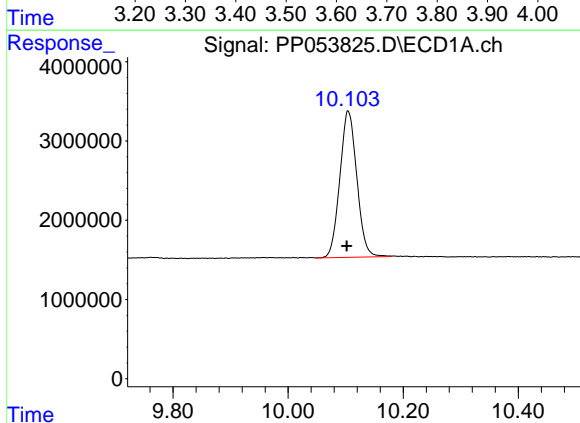
R.T.: 4.341 min  
 Delta R.T.: 0.002 min  
 Response: 44387315  
 Conc: 21.14 ng/ml

Instrument :  
 ECD\_P  
 ClientSampleId :  
 PB149726BL



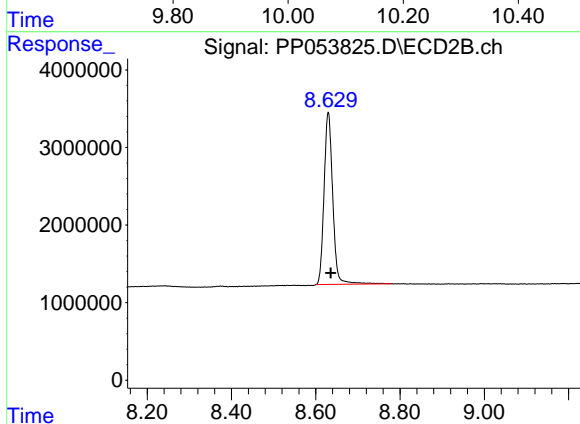
#1 Tetrachloro-m-xylene

R.T.: 3.592 min  
 Delta R.T.: -0.002 min  
 Response: 30495444  
 Conc: 19.53 ng/ml



#2 Decachlorobiphenyl

R.T.: 10.104 min  
 Delta R.T.: 0.002 min  
 Response: 37916259  
 Conc: 22.33 ng/ml



#2 Decachlorobiphenyl

R.T.: 8.630 min  
 Delta R.T.: -0.006 min  
 Response: 31614584  
 Conc: 22.63 ng/ml