

Data Path : Z:\pestpcbsrv\HPCHEM1\ECD_P\Data\PP121922\
 Data File : PP053832.D
 Signal(s) : Signal #1: ECD1A.ch Signal #2: ECD2B.ch
 Acq On : 19 Dec 2022 15:40
 Operator : YP\AJ
 Sample : N6098-01
 Misc :
 ALS Vial : 16 Sample Multiplier: 1

Instrument :
 ECD_P
ClientSampleId :
 FVSUB-TP3-COMP-04

Integration File signal 1: autoint1.e
 Integration File signal 2: autoint2.e
 Quant Time: Dec 20 03:21:13 2022
 Quant Method : Z:\pestpcbsrv\HPCHEM1\ECD_P\methods\PP121322.M
 Quant Title : GC EXTRACTABLES
 QLast Update : Wed Dec 14 05:38:40 2022
 Response via : Initial Calibration
 Integrator: ChemStation

Volume Inj. : 2 µl
 Signal #1 Phase : ZB-MR1 Signal #2 Phase: ZB-MR2
 Signal #1 Info : 30Mx0.32mmx 0.50µ Signal #2 Info : 30M x 0.32mm x 0.25µm

Compound	RT#1	RT#2	Resp#1	Resp#2	ng/ml	ng/ml

System Monitoring Compounds						
1) SA Tetrachlo...	4.340	3.592	48158648	34376389	22.935	22.012
2) SA Decachlor...	10.103	8.629	33516616	27543174	19.741	19.719

Target Compounds

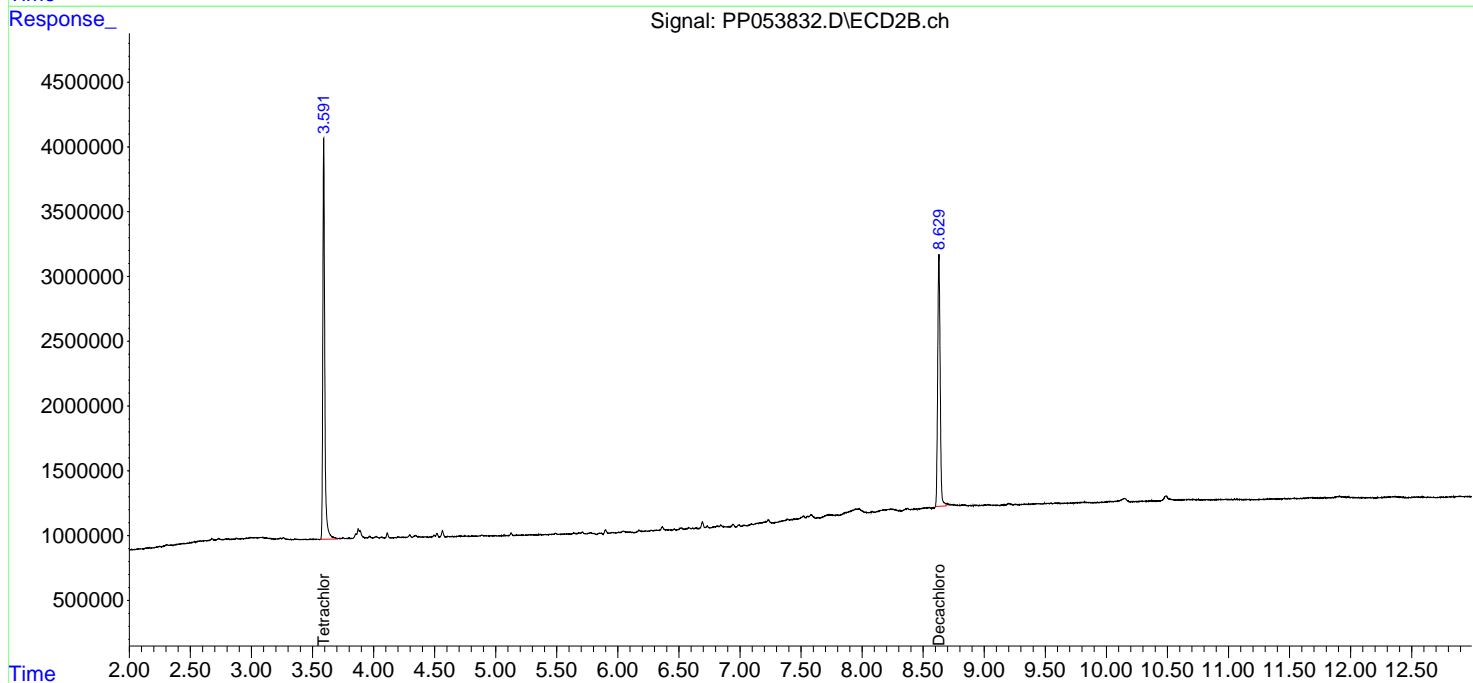
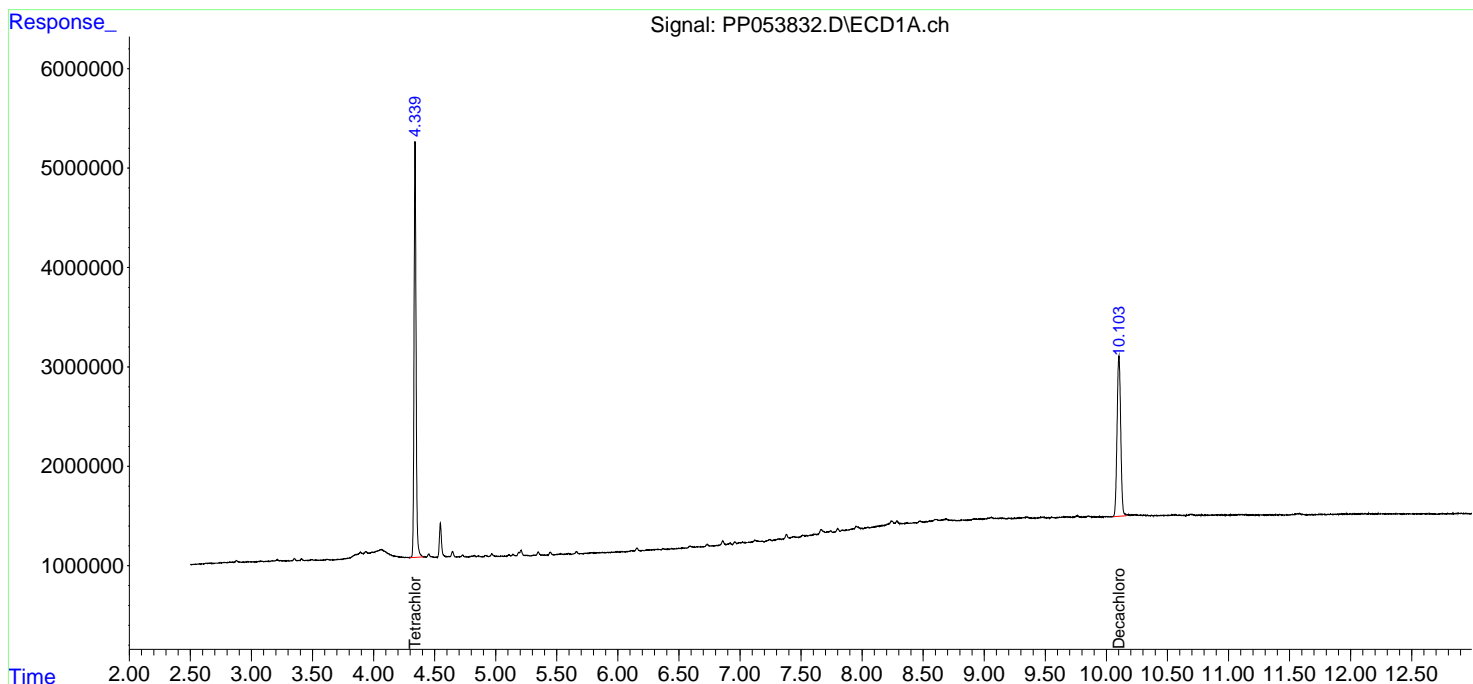
 (f)=RT Delta > 1/2 Window (#)=Amounts differ by > 25% (m)=manual int.

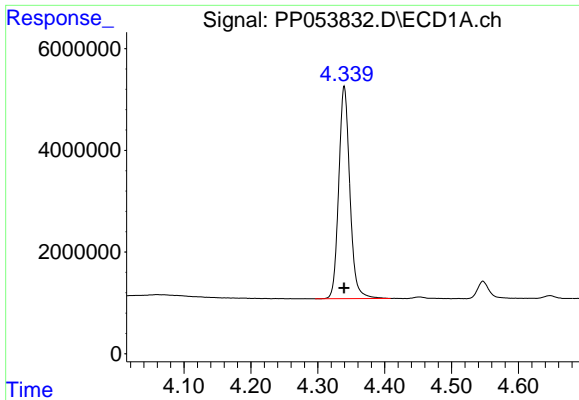
Data Path : Z:\pestpcbsrv\HPCHEM1\ECD_P\Data\PP121922\
 Data File : PP053832.D
 Signal(s) : Signal #1: ECD1A.ch Signal #2: ECD2B.ch
 Acq On : 19 Dec 2022 15:40
 Operator : YP\AJ
 Sample : N6098-01
 Misc :
 ALS Vial : 16 Sample Multiplier: 1

Instrument :
 ECD_P
 ClientSampleId :
 FVSUB-TP3-COMP-04

Integration File signal 1: autoint1.e
 Integration File signal 2: autoint2.e
 Quant Time: Dec 20 03:21:13 2022
 Quant Method : Z:\pestpcbsrv\HPCHEM1\ECD_P\methods\PP121322.M
 Quant Title : GC EXTRACTABLES
 QLast Update : Wed Dec 14 05:38:40 2022
 Response via : Initial Calibration
 Integrator: ChemStation

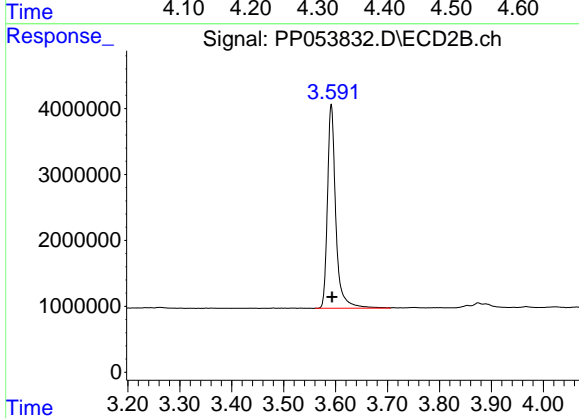
Volume Inj. : 2 µl
 Signal #1 Phase : ZB-MR1 Signal #2 Phase: ZB-MR2
 Signal #1 Info : 30Mx0.32mmx 0.50µ Signal #2 Info : 30M x 0.32mm x 0.25µm



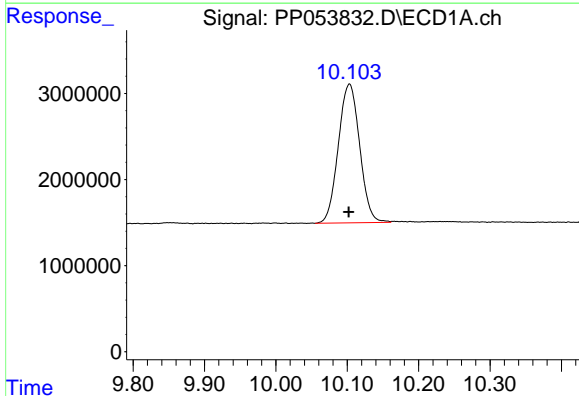


#1 Tetrachloro-m-xylene
R.T.: 4.340 min
Delta R.T.: 0.000 min
Response: 48158648
Conc: 22.94 ng/ml

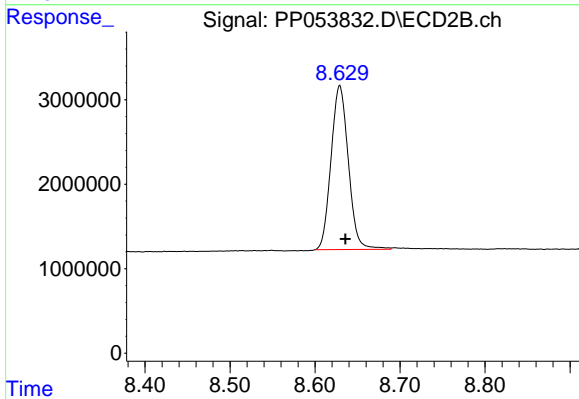
Instrument :
ECD_P
ClientSampleId :
FVSUB-TP3-COMP-04



#1 Tetrachloro-m-xylene
R.T.: 3.592 min
Delta R.T.: -0.002 min
Response: 34376389
Conc: 22.01 ng/ml



#2 Decachlorobiphenyl
R.T.: 10.103 min
Delta R.T.: 0.001 min
Response: 33516616
Conc: 19.74 ng/ml



#2 Decachlorobiphenyl
R.T.: 8.629 min
Delta R.T.: -0.007 min
Response: 27543174
Conc: 19.72 ng/ml