

Data Path : Z:\pestpcbsrv\HPCHEM1\ECD_P\Data\PP121923\
 Data File : PP062507.D
 Signal(s) : Signal #1: ECD1A.ch Signal #2: ECD2B.ch
 Acq On : 19 Dec 2023 10:25
 Operator : YP\AJ
 Sample : 05887-01
 Misc :
 ALS Vial : 9 Sample Multiplier: 1

Instrument :
 ECD_P
ClientSampleId :
 WC-121423

Manual Integrations
APPROVED

Reviewed By :Yogesh Patel 12/20/2023
 Supervised By :Ankita Jodhani 12/20/2023

Integration File signal 1: autoint1.e
 Integration File signal 2: autoint2.e
 Quant Time: Dec 19 12:16:20 2023
 Quant Method : Z:\pestpcbsrv\HPCHEM1\ECD_P\methods\PP121823.M
 Quant Title : GC EXTRACTABLES
 QLast Update : Tue Dec 19 06:30:31 2023
 Response via : Initial Calibration
 Integrator: ChemStation

Volume Inj. : 2 µl
 Signal #1 Phase : ZB-MR1 Signal #2 Phase: ZB-MR2
 Signal #1 Info : 30Mx0.32mmx 0.50µ Signal #2 Info : 30M x 0.32mm x 0.25µm

Compound	RT#1	RT#2	Resp#1	Resp#2	ng/ml	ng/ml

System Monitoring Compounds						
1) SA Tetrachlo...	4.401	3.687	35021102	54518296	17.206	15.898
2) SA Decachlor...	10.148	8.792	27244654	39888583	21.892m	17.810

Target Compounds

(f)=RT Delta > 1/2 Window (#)=Amounts differ by > 25% (m)=manual int.

Data Path : Z:\pestpcbsrv\HPCHEM1\ECD_P\Data\PP121923\
 Data File : PP062507.D
 Signal(s) : Signal #1: ECD1A.ch Signal #2: ECD2B.ch
 Acq On : 19 Dec 2023 10:25
 Operator : YP\AJ
 Sample : 05887-01
 Misc :
 ALS Vial : 9 Sample Multiplier: 1

Instrument :

ECD_P

ClientSampleID :

WC-121423

Manual Integrations

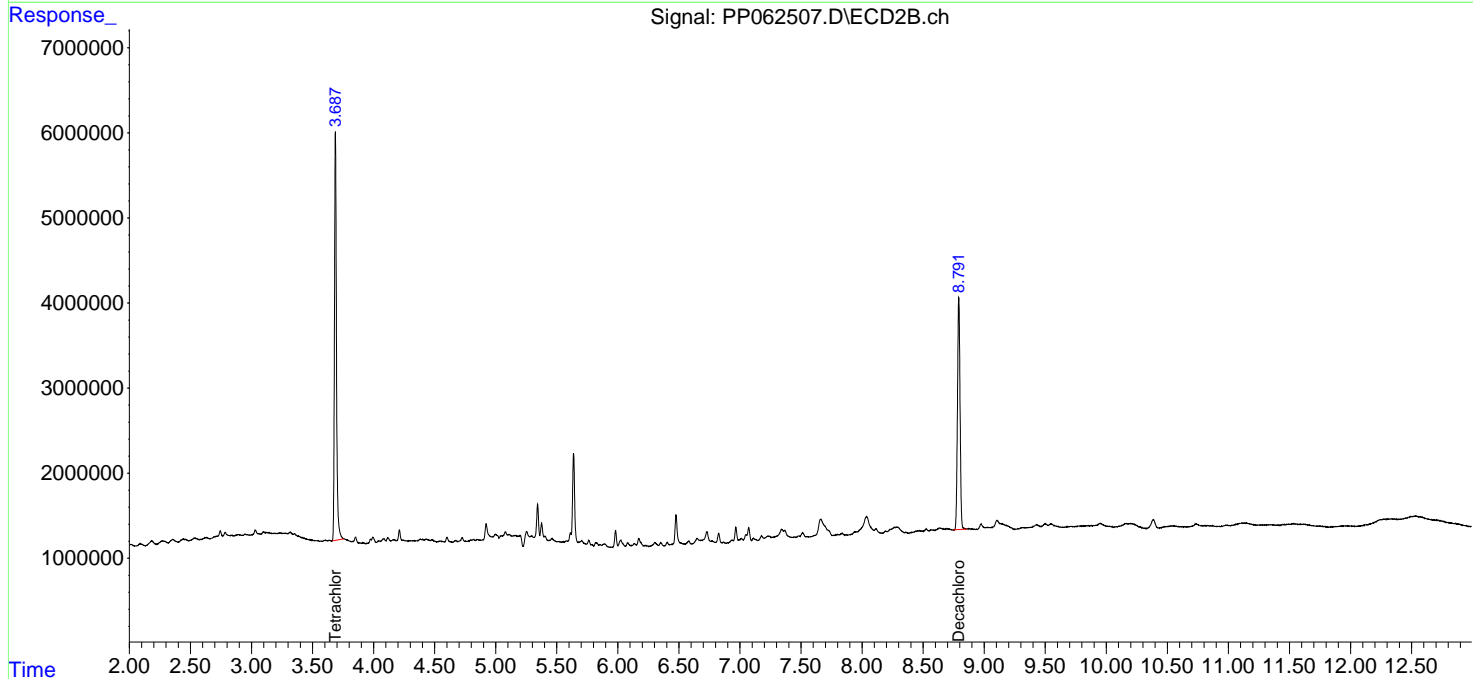
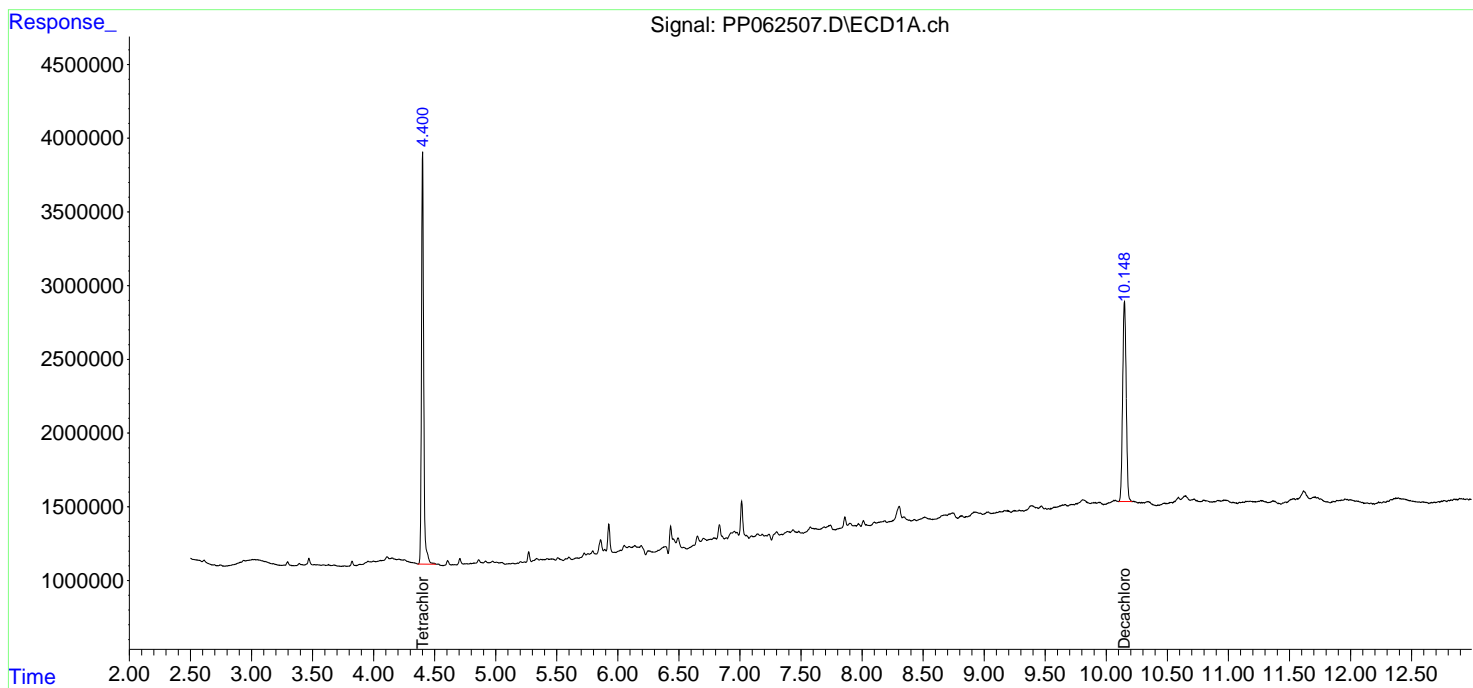
APPROVED

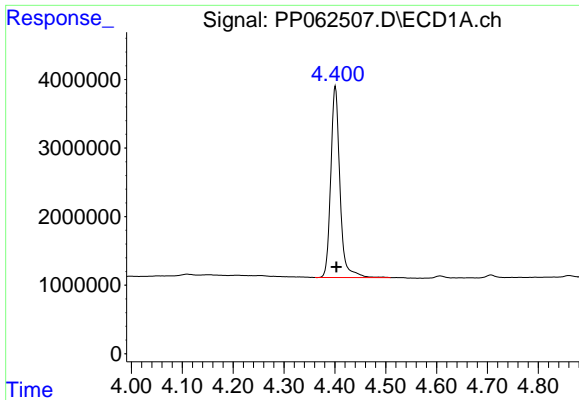
Reviewed By :Yogesh Patel 12/20/2023

Supervised By :Ankita Jodhani 12/20/2023

Integration File signal 1: autoint1.e
 Integration File signal 2: autoint2.e
 Quant Time: Dec 19 12:16:20 2023
 Quant Method : Z:\pestpcbsrv\HPCHEM1\ECD_P\methods\PP121823.M
 Quant Title : GC EXTRACTABLES
 QLast Update : Tue Dec 19 06:30:31 2023
 Response via : Initial Calibration
 Integrator: ChemStation

Volume Inj. : 2 µl
 Signal #1 Phase : ZB-MR1 Signal #2 Phase: ZB-MR2
 Signal #1 Info : 30Mx0.32mmx 0.50µ Signal #2 Info : 30M x 0.32mm x 0.25µm





#1 Tetrachloro-m-xylene

R.T.: 4.401 min
 Delta R.T.: -0.002 min
 Response: 35021102
 Conc: 17.21 ng/ml

Instrument :

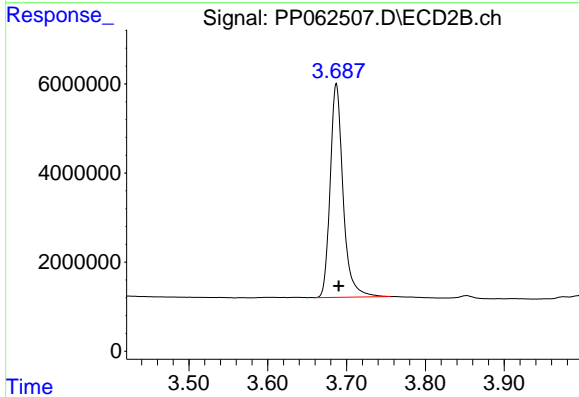
ECD_P

ClientSampleId :

WC-121423

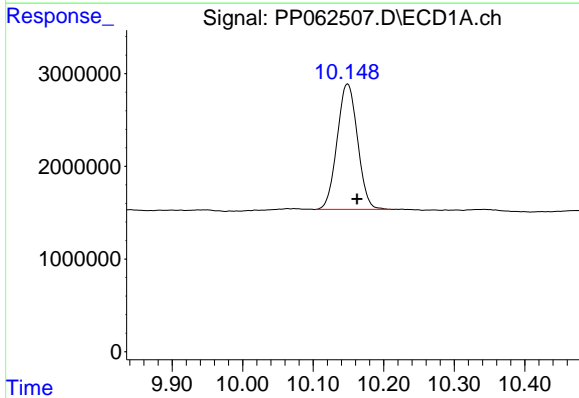
Manual Integrations
 APPROVED

Reviewed By :Yogesh Patel 12/20/2023
 Supervised By :Ankita Jodhani 12/20/2023



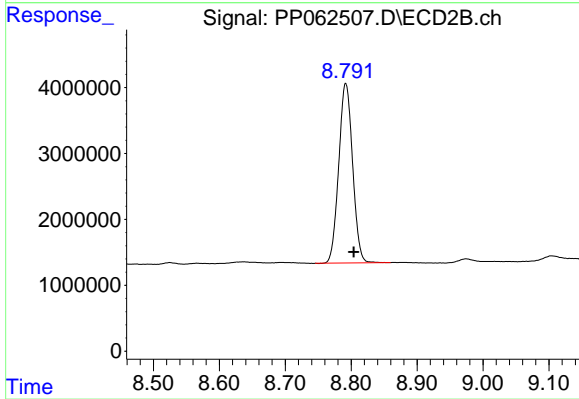
#1 Tetrachloro-m-xylene

R.T.: 3.687 min
 Delta R.T.: -0.003 min
 Response: 54518296
 Conc: 15.90 ng/ml



#2 Decachlorobiphenyl

R.T.: 10.148 min
 Delta R.T.: -0.014 min
 Response: 27244654
 Conc: 21.89 ng/ml m



#2 Decachlorobiphenyl

R.T.: 8.792 min
 Delta R.T.: -0.012 min
 Response: 39888583
 Conc: 17.81 ng/ml