

Data Path : Z:\pestpcbsrv\HPCHEM1\ECD\_P\Data\PP122118\  
 Data File : PP028561.D  
 Signal(s) : Signal #1: ECD1A.CH Signal #2: ECD2B.CH  
 Acq On : 22 Dec 2018 00:03  
 Operator : EI\MA  
 Sample : J6500-01  
 Misc :  
 ALS Vial : 21 Sample Multiplier: 1

Instrument :  
 ECD\_P  
 ClientSampleId :

Integration File signal 1: autoint1.e  
 Integration File signal 2: autoint2.e  
 Quant Time: Dec 22 04:44:48 2018  
 Quant Method : Z:\pestpcbsrv\HPCHEM1\ECD\_P\methods\PP120718.M  
 Quant Title : 8080.M  
 QLast Update : Fri Dec 07 14:01:32 2018  
 Response via : Initial Calibration  
 Integrator: ChemStation 6890 Scale Mode: Large solvent peaks clipped

Volume Inj. : 2 µl  
 Signal #1 Phase : ZB-CLPesticides-1 Signal #2 Phase: ZB-CLPesticides-2  
 Signal #1 Info : 30M x 0.32mm x0.5 Signal #2 Info : 30M x 0.32mm x 0.25µm

Compound	RT#1	RT#2	Resp#1	Resp#2	ng/ml	ng/ml
-----						
System Monitoring Compounds						
4) S 2,4-DCAA	12.096	12.208	150.3E6	223.2E6	575.648	498.328
Target Compounds						
1) T Dalapon	3.300	2.972	66804928	82871811	114.301	149.955 #
8) T DICHLORPROP	0.000	13.654	0	6042921	N.D.	13.960 #
-----						

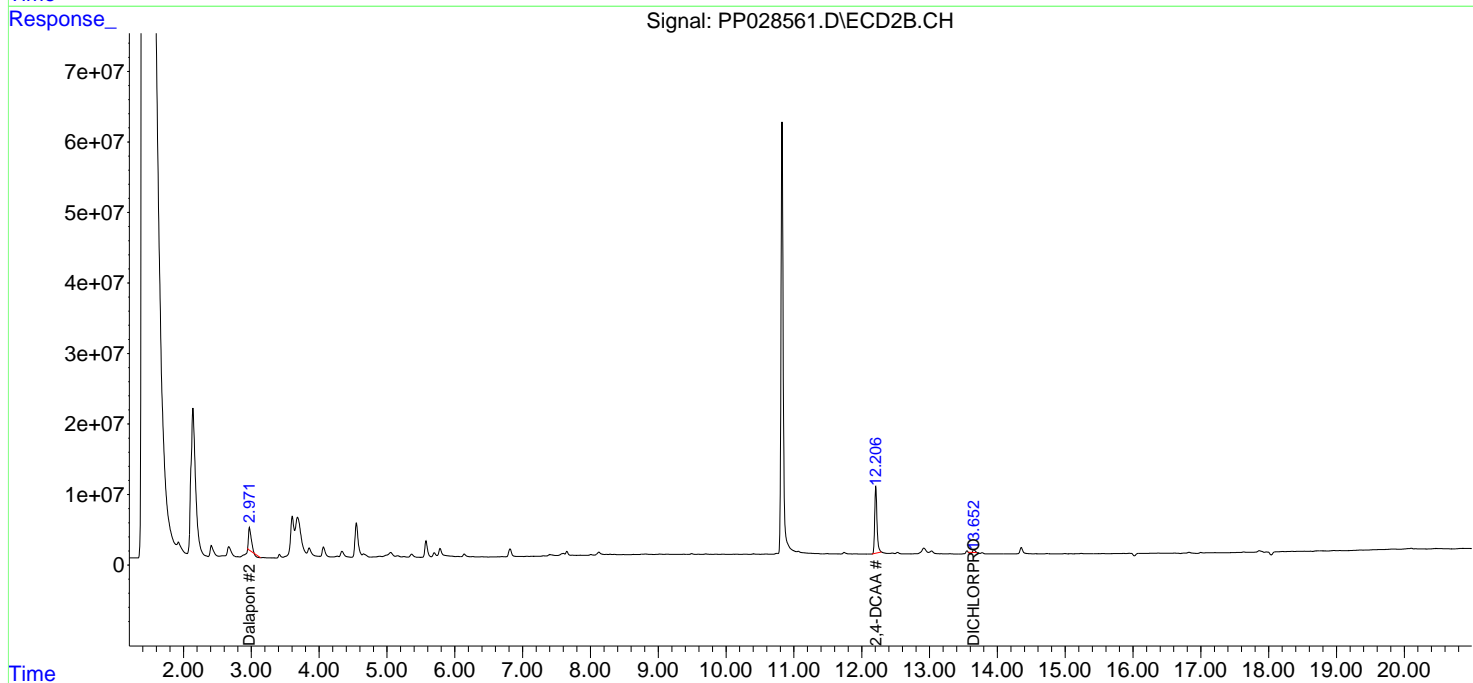
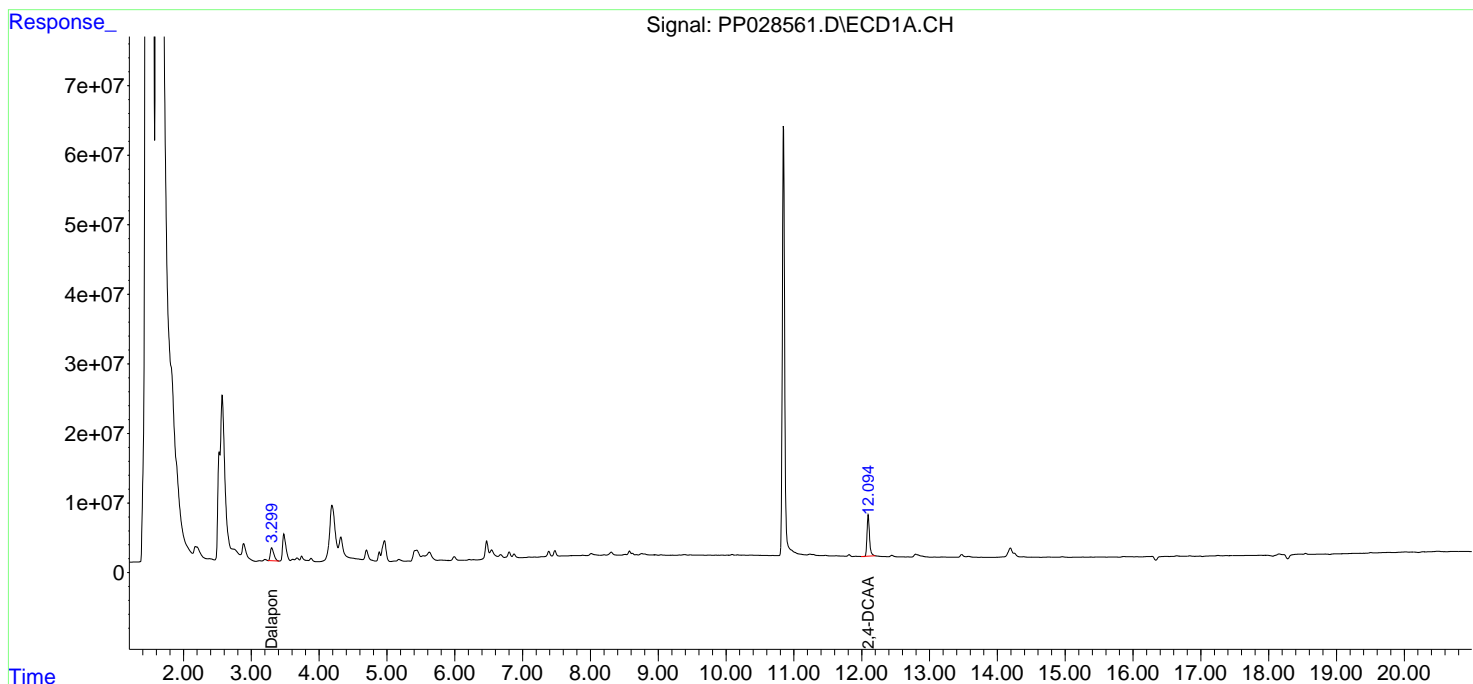
(f)=RT Delta > 1/2 Window (#)=Amounts differ by > 25% (m)=manual int.

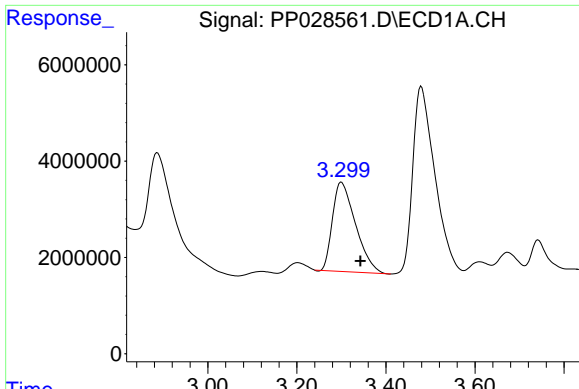
Data Path : Z:\pestpcbsrv\HPCHEM1\ECD\_P\Data\PP122118\  
 Data File : PP028561.D  
 Signal(s) : Signal #1: ECD1A.CH Signal #2: ECD2B.CH  
 Acq On : 22 Dec 2018 00:03  
 Operator : EI\MA  
 Sample : J6500-01  
 Misc :  
 ALS Vial : 21 Sample Multiplier: 1

Instrument :  
 ECD\_P  
 ClientSampled :

Integration File signal 1: autoint1.e  
 Integration File signal 2: autoint2.e  
 Quant Time: Dec 22 04:44:48 2018  
 Quant Method : Z:\pestpcbsrv\HPCHEM1\ECD\_P\methods\PP120718.M  
 Quant Title : 8080.M  
 QLast Update : Fri Dec 07 14:01:32 2018  
 Response via : Initial Calibration  
 Integrator: ChemStation 6890 Scale Mode: Large solvent peaks clipped

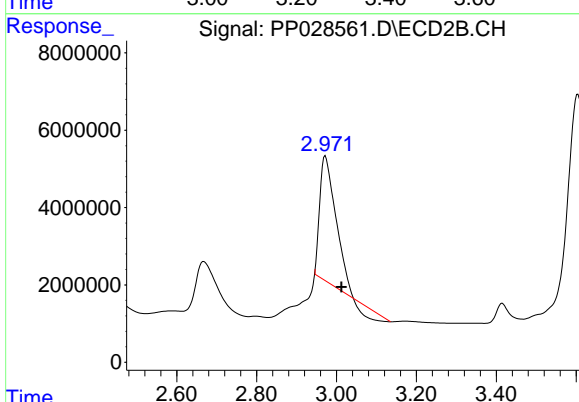
Volume Inj. : 2 µl  
 Signal #1 Phase : ZB-CLPesticides-1 Signal #2 Phase: ZB-CLPesticides-2  
 Signal #1 Info : 30M x 0.32mm x0.5 Signal #2 Info : 30M x 0.32mm x 0.25µm



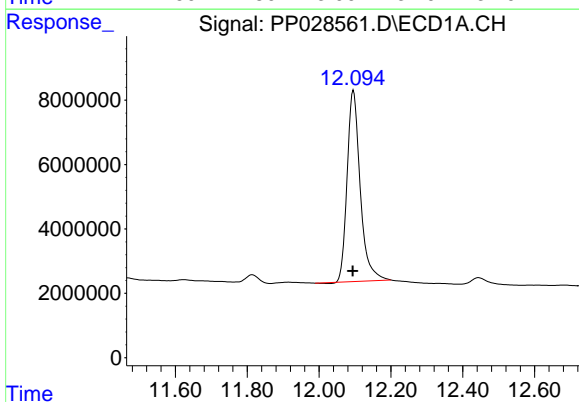


#1 Dalapon  
 R.T.: 3.300 min  
 Delta R.T.: -0.043 min  
 Response: 66804928  
 Conc: 114.30 ng/ml

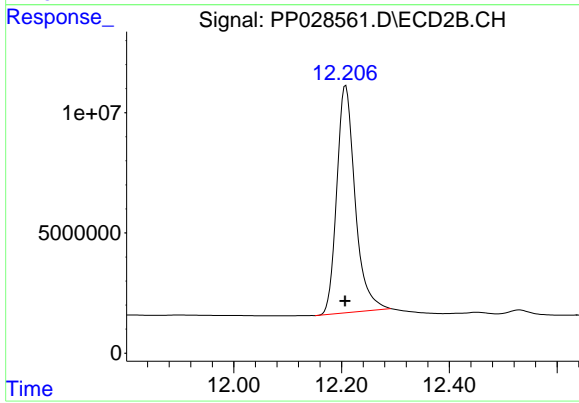
Instrument :  
 ECD\_P  
 ClientSampled :



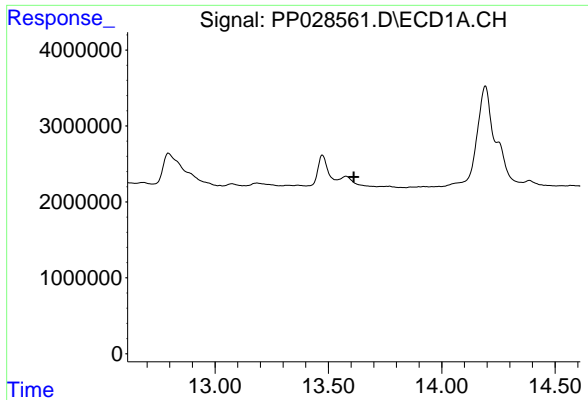
#1 Dalapon  
 R.T.: 2.972 min  
 Delta R.T.: -0.040 min  
 Response: 82871811  
 Conc: 149.96 ng/ml



#4 2,4-DCAA  
 R.T.: 12.096 min  
 Delta R.T.: 0.002 min  
 Response: 150276977  
 Conc: 575.65 ng/ml

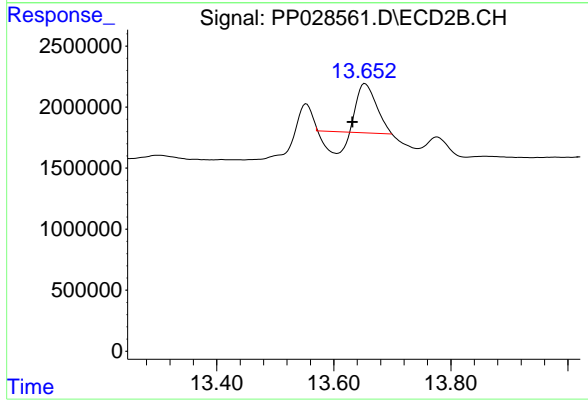


#4 2,4-DCAA  
 R.T.: 12.208 min  
 Delta R.T.: 0.001 min  
 Response: 223176379  
 Conc: 498.33 ng/ml



#8 DICHLORPROP  
R.T.: 0.000 min  
Exp R.T.: 13.613 min  
Response: 0  
Conc: N.D.

Instrument :  
ECD\_P  
ClientSampleId :



#8 DICHLORPROP  
R.T.: 13.654 min  
Delta R.T.: 0.022 min  
Response: 6042921  
Conc: 13.96 ng/ml