

Data Path : Z:\pestpcbsrv\HPCHEM1\ECD_P\Data\PP122118\
 Data File : PP028562.D
 Signal(s) : Signal #1: ECD1A.CH Signal #2: ECD2B.CH
 Acq On : 22 Dec 2018 00:28
 Operator : EI\MA
 Sample : J6191-04
 Misc :
 ALS Vial : 22 Sample Multiplier: 1

Instrument :
 ECD_P
 ClientSampleId :

Integration File signal 1: autoint1.e
 Integration File signal 2: autoint2.e
 Quant Time: Dec 22 04:45:01 2018
 Quant Method : Z:\pestpcbsrv\HPCHEM1\ECD_P\methods\PP120718.M
 Quant Title : 8080.M
 QLast Update : Fri Dec 07 14:01:32 2018
 Response via : Initial Calibration
 Integrator: ChemStation 6890 Scale Mode: Large solvent peaks clipped

Volume Inj. : 2 µl
 Signal #1 Phase : ZB-CLPesticides-1 Signal #2 Phase: ZB-CLPesticides-2
 Signal #1 Info : 30M x 0.32mm x0.5 Signal #2 Info : 30M x 0.32mm x 0.25µm

Compound	RT#1	RT#2	Resp#1	Resp#2	ng/ml	ng/ml

System Monitoring Compounds						
4) S 2,4-DCAA	12.097	12.209	101.7E6	148.6E6	389.443	331.746
Target Compounds						
1) T Dalapon	3.301	2.973	64339510	69993827	110.083	126.653
8) T DICHLORPROP	0.000	13.650	0	24847300	N.D.	57.401 #

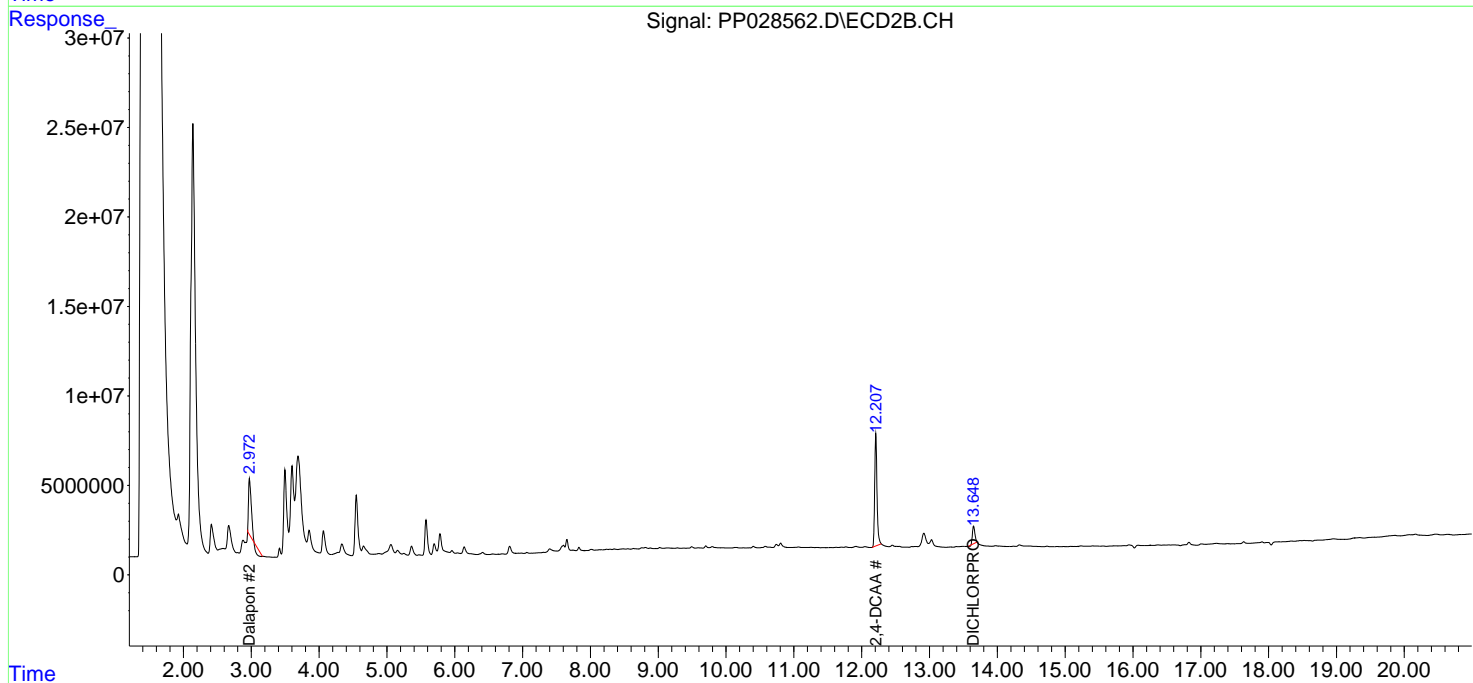
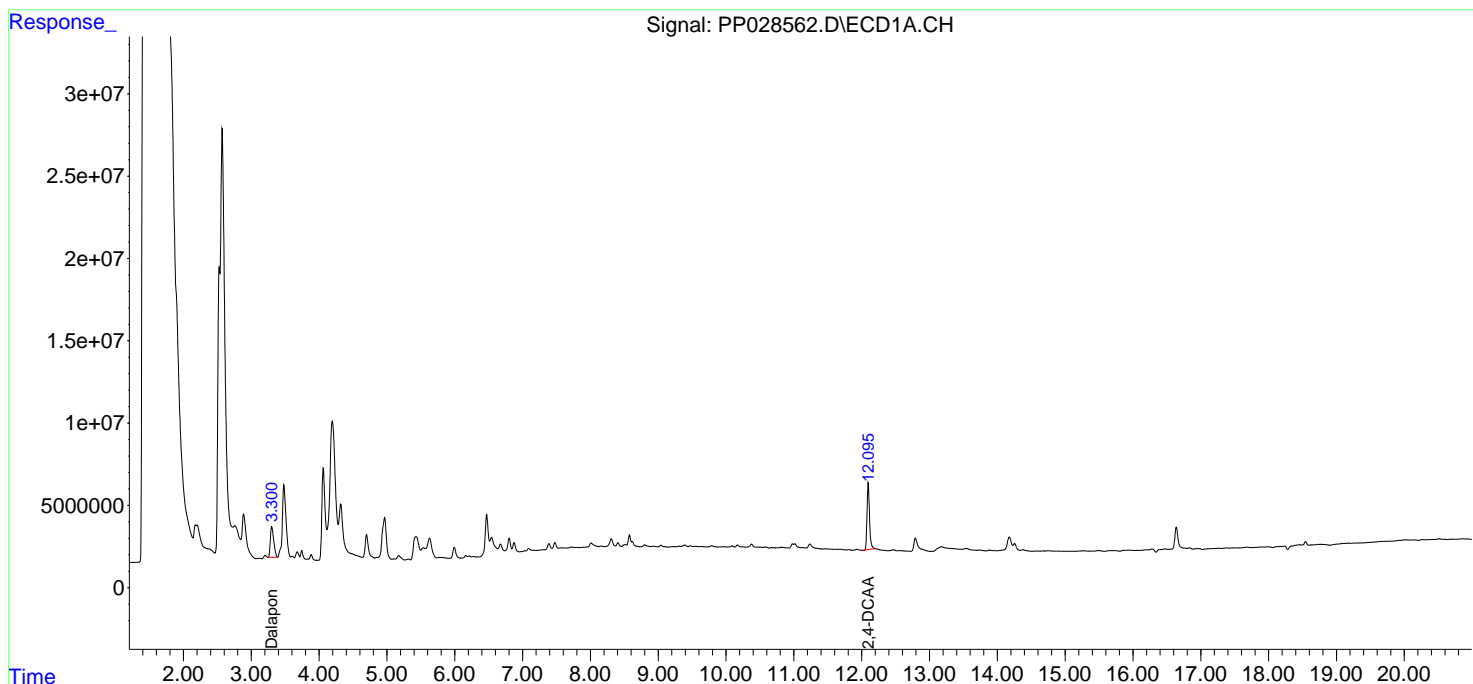
(f)=RT Delta > 1/2 Window (#)=Amounts differ by > 25% (m)=manual int.

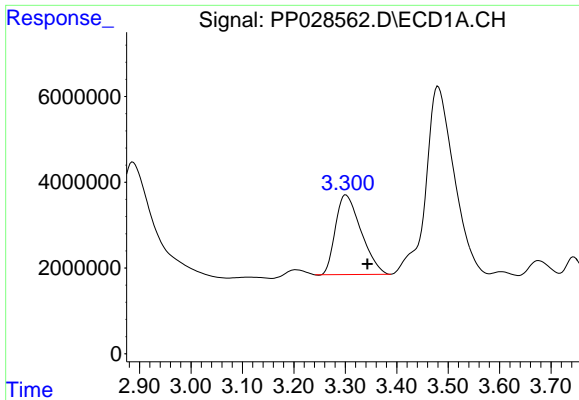
Data Path : Z:\pestpcbsrv\HPCHEM1\ECD_P\Data\PP122118\
 Data File : PP028562.D
 Signal(s) : Signal #1: ECD1A.CH Signal #2: ECD2B.CH
 Acq On : 22 Dec 2018 00:28
 Operator : EI\MA
 Sample : J6191-04
 Misc :
 ALS Vial : 22 Sample Multiplier: 1

Instrument :
 ECD_P
 ClientSampled :

Integration File signal 1: autoint1.e
 Integration File signal 2: autoint2.e
 Quant Time: Dec 22 04:45:01 2018
 Quant Method : Z:\pestpcbsrv\HPCHEM1\ECD_P\methods\PP120718.M
 Quant Title : 8080.M
 QLast Update : Fri Dec 07 14:01:32 2018
 Response via : Initial Calibration
 Integrator: ChemStation 6890 Scale Mode: Large solvent peaks clipped

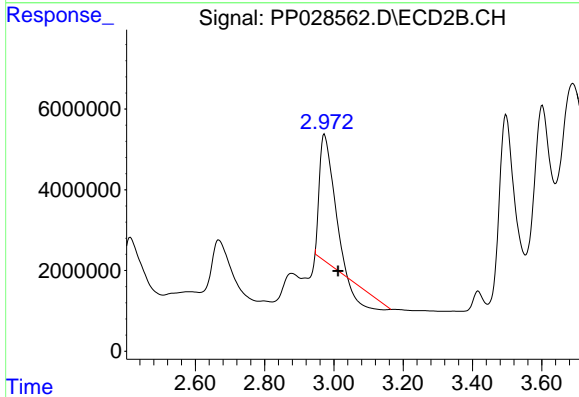
Volume Inj. : 2 µl
 Signal #1 Phase : ZB-CLPesticides-1 Signal #2 Phase: ZB-CLPesticides-2
 Signal #1 Info : 30M x 0.32mm x0.5 Signal #2 Info : 30M x 0.32mm x 0.25µm



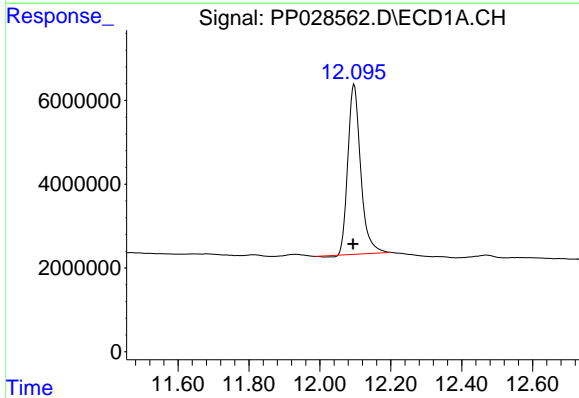


#1 Dalapon
 R.T.: 3.301 min
 Delta R.T.: -0.042 min
 Response: 64339510
 Conc: 110.08 ng/ml

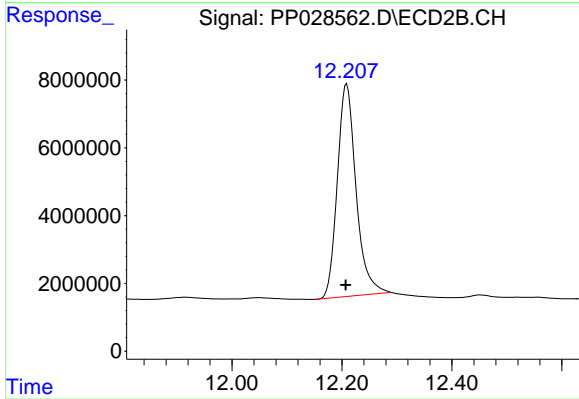
Instrument :
 ECD_P
 ClientSampleId :



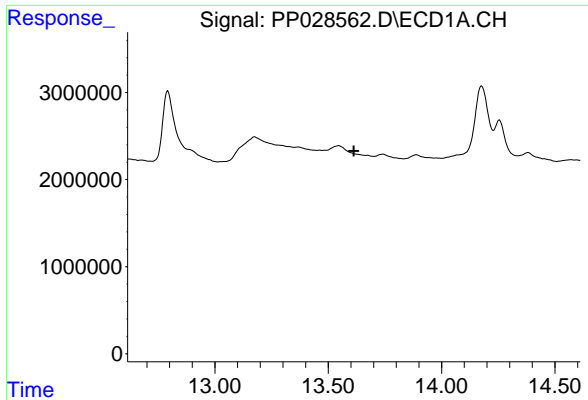
#1 Dalapon
 R.T.: 2.973 min
 Delta R.T.: -0.039 min
 Response: 69993827
 Conc: 126.65 ng/ml



#4 2,4-DCAA
 R.T.: 12.097 min
 Delta R.T.: 0.003 min
 Response: 101666853
 Conc: 389.44 ng/ml



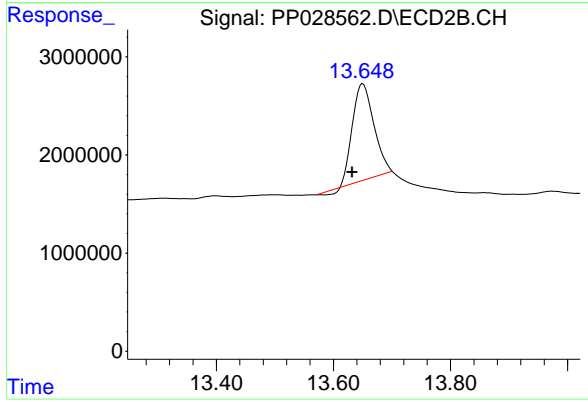
#4 2,4-DCAA
 R.T.: 12.209 min
 Delta R.T.: 0.002 min
 Response: 148572590
 Conc: 331.75 ng/ml



#8 DICHLORPROP

R.T.: 0.000 min
Exp R.T. : 13.613 min
Response: 0
Conc: N.D.

Instrument :
ECD_P
ClientSampleId :



#8 DICHLORPROP

R.T.: 13.650 min
Delta R.T.: 0.019 min
Response: 24847300
Conc: 57.40 ng/ml