

Data Path : Z:\pestpcbsrv\HPCHEM1\ECD_P\Data\PP122123\
 Data File : PP062578.D
 Signal(s) : Signal #1: ECD1A.ch Signal #2: ECD2B.ch
 Acq On : 22 Dec 2023 01:57
 Operator : YP\AJ
 Sample : AR1248ICV500
 Misc :
 ALS Vial : 33 Sample Multiplier: 1

Instrument :
 ECD_P
 ClientSampleId :
 ICVPP122123AR1248

Integration File signal 1: autoint1.e
 Integration File signal 2: autoint2.e
 Quant Time: Dec 22 03:31:47 2023
 Quant Method : Z:\pestpcbsrv\HPCHEM1\ECD_P\methods\PP122123.M
 Quant Title : GC EXTRACTABLES
 QLast Update : Fri Dec 22 03:29:15 2023
 Response via : Initial Calibration
 Integrator: ChemStation

Volume Inj. : 2 µl
 Signal #1 Phase : ZB-MR1 Signal #2 Phase: ZB-MR2
 Signal #1 Info : 30Mx0.32mmx 0.50µ Signal #2 Info : 30M x 0.32mm x 0.25µm

Compound	RT#1	RT#2	Resp#1	Resp#2	ng/ml	ng/ml
System Monitoring Compounds						
1) SA Tetrachlo...	4.395	3.681	115.2E6	156.0E6	52.975	52.283
2) SA Decachlor...	10.141	8.781	75343452	129.9E6	52.249	51.035
Target Compounds						
3) L1 AR-1016-1	5.567	4.788	22347898	29292741	327.912	311.959
4) L1 AR-1016-2	5.590	4.808	27864284	29491261	274.583	220.198
5) L1 AR-1016-3	5.652	4.989	13969009	21400661	221.676	292.976 #
6) L1 AR-1016-4	5.749	5.030	15370617	43790157	299.856	718.843 #
7) L1 AR-1016-5	6.045	5.247	38255411	54258490	722.114	674.386
8) L2 AR-1221-1	4.604	3.900	707411	408099	25.954	11.246 #
9) L2 AR-1221-2	4.701	3.988	2451719	2911030	120.614	105.387
10) L2 AR-1221-3	4.767	4.065	2386062	2680617	40.487	33.589
11) L3 AR-1232-1	4.767	4.065	2386062	2680617	49.323	41.444
12) L3 AR-1232-2	5.298	4.808	11271026	29491261	425.067	468.198
13) L3 AR-1232-3	5.590	4.989	27864284	21400661	591.907	628.226
14) L3 AR-1232-4	5.749	5.073	15370617	46381416	638.551	1421.491 #
15) L3 AR-1232-5	5.841	5.247	35081779	54258490	1754.868	1534.437
16) L4 AR-1242-1	5.567	4.788	22347898	29292741	398.736	381.208
17) L4 AR-1242-2	5.590	4.808	27864284	29491261	337.536	273.744
18) L4 AR-1242-3	5.652	4.989	13969009	21400661	272.935	363.257 #
19) L4 AR-1242-4	5.749	5.073	15370617	46381416	367.026	753.129 #
20) L4 AR-1242-5	6.489	5.605	39836049	73034428	928.687	1011.061
21) L5 AR-1248-1	5.567	4.788	22347898	29292741	517.869	504.889
22) L5 AR-1248-2	5.841	5.030	35081779	43790157	516.907	502.600
23) L5 AR-1248-3	6.045	5.073	38255411	46381416	519.066	508.024
24) L5 AR-1248-4	6.450	5.247	40178081	54258490	527.482	505.408
25) L5 AR-1248-5	6.489	5.647	39836049	50808561	525.422	511.899
26) L6 AR-1254-1	6.423	5.605	31406141	73034428	380.576	460.050
27) L6 AR-1254-2	6.646	5.754	41001975	23726700	319.831	170.123 #
28) L6 AR-1254-3	7.010	6.164	22637470	35122973	175.330	158.932
29) L6 AR-1254-4	7.298	6.395	14424913	23820027	160.084	184.218
30) L6 AR-1254-5	7.717	6.819	3727960	7911867	38.053	41.234
31) L7 AR-1260-1	7.176	6.311	2482676	18562157	25.077	116.122 #
32) L7 AR-1260-2	7.434	6.486	2059149	3199993	18.149	17.478
33) L7 AR-1260-3	7.776f	6.641	1211055	4593200	14.134	25.538 #
34) L7 AR-1260-4	8.006	7.121	1861340	531787	19.221	3.614 #
35) L7 AR-1260-5	8.335	7.362	1019716	1085880	5.721	3.371 #
36) L8 AR-1262-1	0.000	6.889f	0	1135375	N.D.	12.779 #
37) L8 AR-1262-2	8.335	7.121	1019716	531787	5.028	2.846 #
38) L8 AR-1262-3	8.661	7.647	422385	631784	3.140	5.792 #
39) L8 AR-1262-4	8.714f	7.714	136684	1109136	1.343	4.324 #
40) L8 AR-1262-5	9.386	8.218	92187	223432	1.425	1.961 #
41) L9 AR-1268-1	8.661	7.647	422385	631784	1.870	1.639

Data Path : Z:\pestpcbsrv\HPCHEM1\ECD_P\Data\PP122123\
 Data File : PP062578.D
 Signal(s) : Signal #1: ECD1A.ch Signal #2: ECD2B.ch
 Acq On : 22 Dec 2023 01:57
 Operator : YP\AJ
 Sample : AR1248ICV500
 Misc :
 ALS Vial : 33 Sample Multiplier: 1

Instrument :
 ECD_P
 ClientSampleId :
 ICVPP122123AR1248

Integration File signal 1: autoint1.e
 Integration File signal 2: autoint2.e
 Quant Time: Dec 22 03:31:47 2023
 Quant Method : Z:\pestpcbsrv\HPCHEM1\ECD_P\methods\PP122123.M
 Quant Title : GC EXTRACTABLES
 QLast Update : Fri Dec 22 03:29:15 2023
 Response via : Initial Calibration
 Integrator: ChemStation

Volume Inj. : 2 µl
 Signal #1 Phase : ZB-MR1 Signal #2 Phase: ZB-MR2
 Signal #1 Info : 30Mx0.32mmx 0.50µ Signal #2 Info : 30M x 0.32mm x 0.25µm

	Compound	RT#1	RT#2	Resp#1	Resp#2	ng/ml	ng/ml
42)	L9 AR-1268-2	8.714f	7.714	136684	1109136	0.677	3.134 #
43)	L9 AR-1268-3	0.000	7.926	0	757752	N.D.	2.418 #
44)	L9 AR-1268-4	9.386	8.218	92187	223432	1.362	1.789 #
45)	L9 AR-1268-5	0.000	8.516	0	964920	N.D.	1.100 #

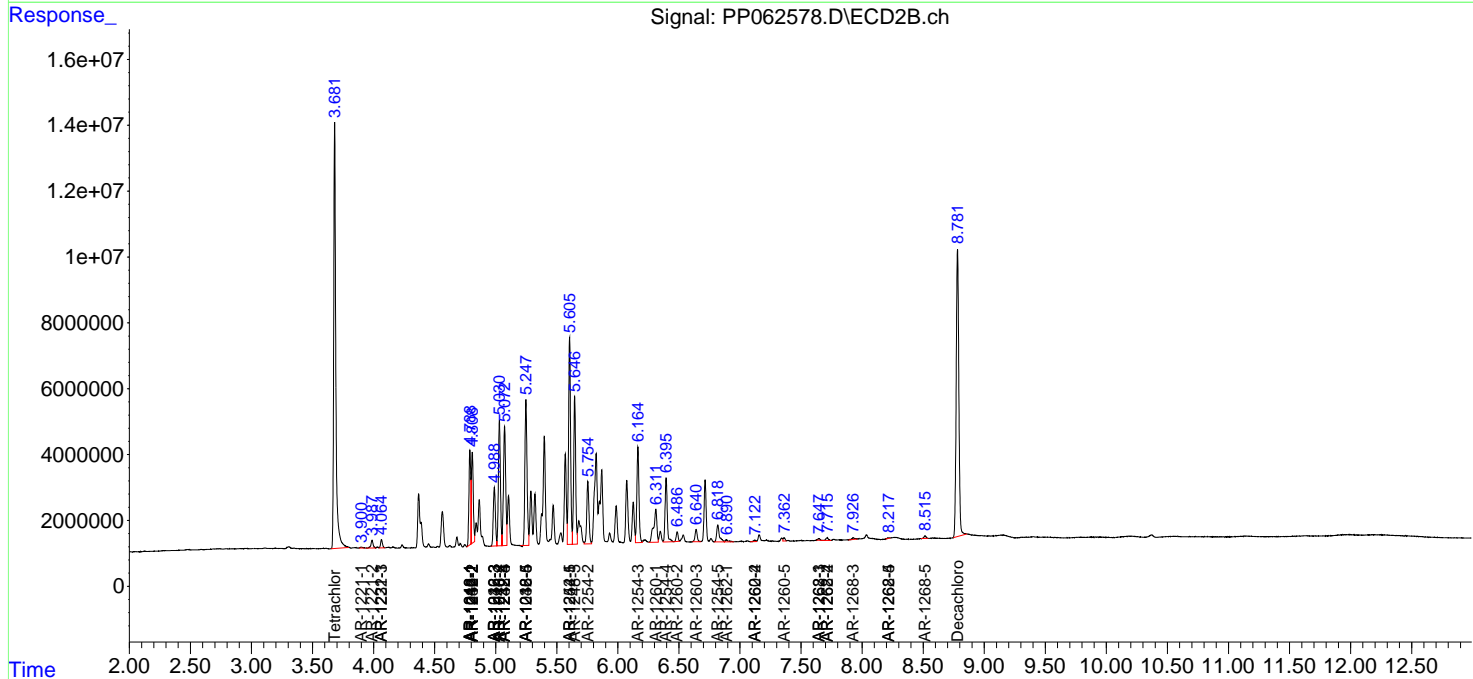
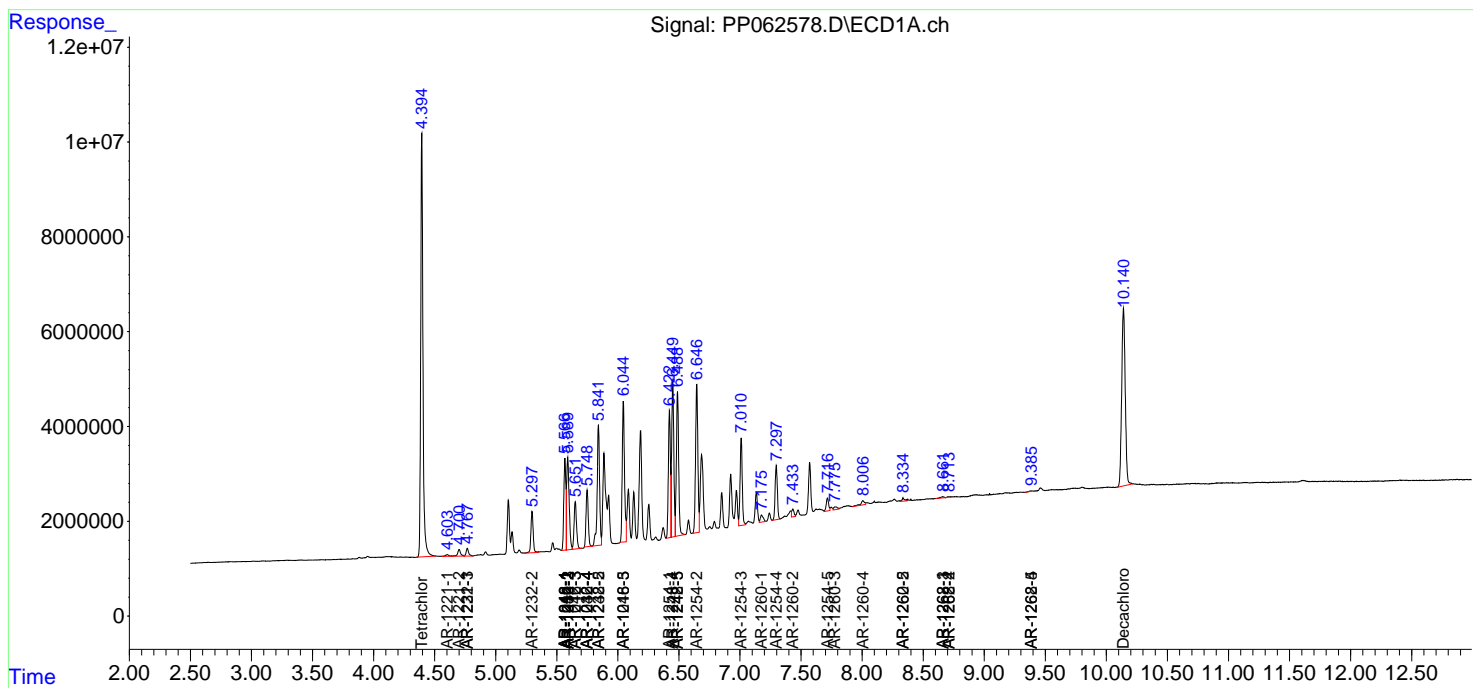
(f)=RT Delta > 1/2 Window (#)=Amounts differ by > 25% (m)=manual int.

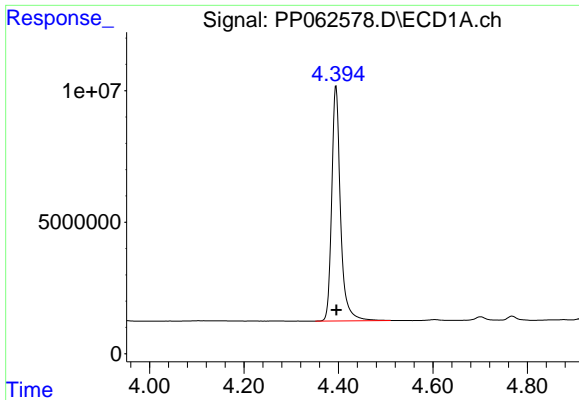
Data Path : Z:\pestpcbsrv\HPCHEM1\ECD_P\Data\PP122123\
 Data File : PP062578.D
 Signal(s) : Signal #1: ECD1A.ch Signal #2: ECD2B.ch
 Acq On : 22 Dec 2023 01:57
 Operator : YP\AJ
 Sample : AR1248ICV500
 Misc :
 ALS Vial : 33 Sample Multiplier: 1

Instrument :
 ECD_P
 ClientSampleId :
 ICVPP122123AR1248

Integration File signal 1: autoint1.e
 Integration File signal 2: autoint2.e
 Quant Time: Dec 22 03:31:47 2023
 Quant Method : Z:\pestpcbsrv\HPCHEM1\ECD_P\methods\PP122123.M
 Quant Title : GC EXTRACTABLES
 QLast Update : Fri Dec 22 03:29:15 2023
 Response via : Initial Calibration
 Integrator: ChemStation

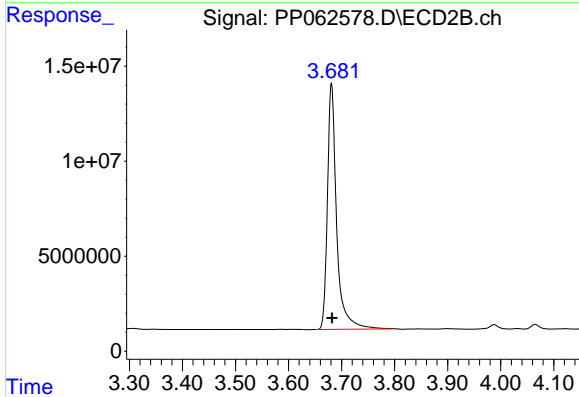
Volume Inj. : 2 µl
 Signal #1 Phase : ZB-MR1 Signal #2 Phase: ZB-MR2
 Signal #1 Info : 30Mx0.32mmx 0.50µ Signal #2 Info : 30M x 0.32mm x 0.25µm



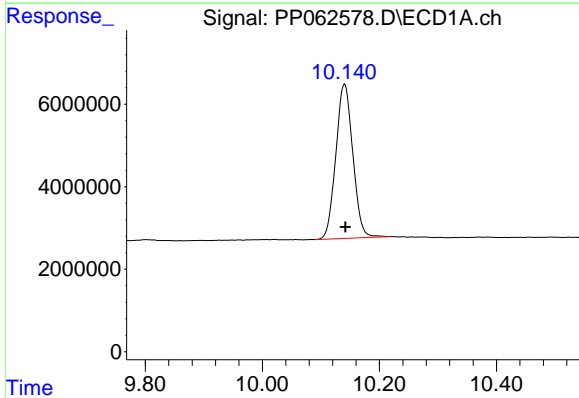


#1 Tetrachloro-m-xylene
R.T.: 4.395 min
Delta R.T.: -0.001 min
Response: 115172702
Conc: 52.98 ng/ml

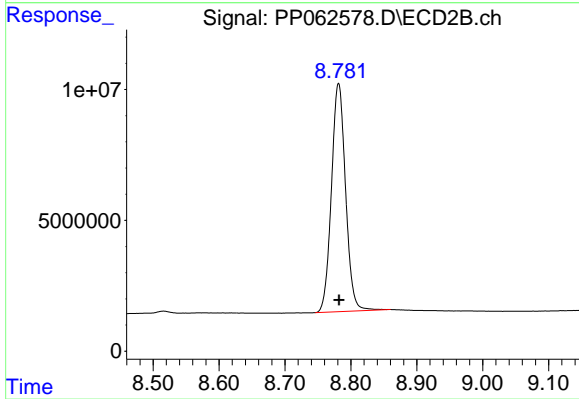
Instrument :
ECD_P
ClientSampleId :
ICVPP122123AR1248



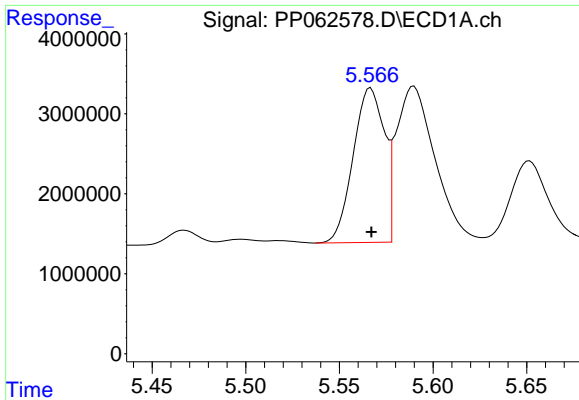
#1 Tetrachloro-m-xylene
R.T.: 3.681 min
Delta R.T.: 0.000 min
Response: 156022447
Conc: 52.28 ng/ml



#2 Decachlorobiphenyl
R.T.: 10.141 min
Delta R.T.: -0.001 min
Response: 75343452
Conc: 52.25 ng/ml



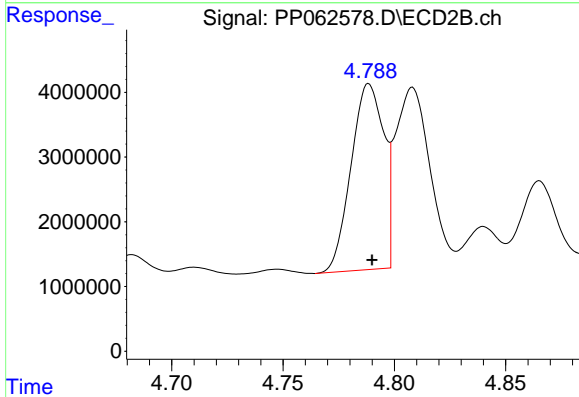
#2 Decachlorobiphenyl
R.T.: 8.781 min
Delta R.T.: 0.000 min
Response: 129919726
Conc: 51.03 ng/ml



#3 AR-1016-1

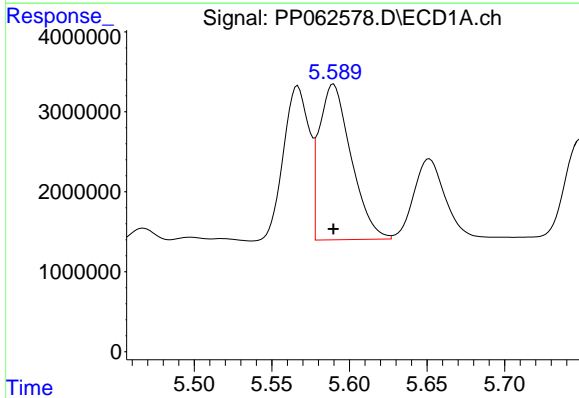
R.T.: 5.567 min
 Delta R.T.: 0.000 min
 Response: 22347898
 Conc: 327.91 ng/ml

Instrument :
 ECD_P
 ClientSampleId :
 ICVPP122123AR1248



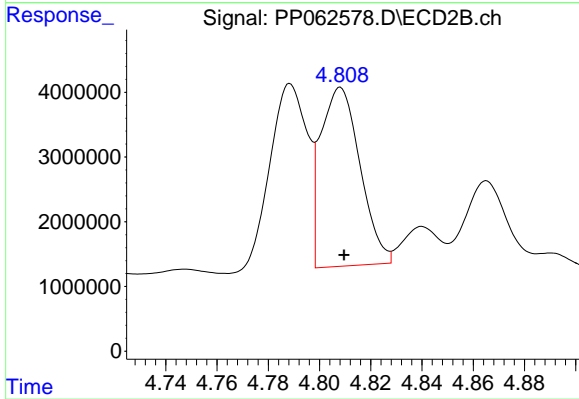
#3 AR-1016-1

R.T.: 4.788 min
 Delta R.T.: -0.001 min
 Response: 29292741
 Conc: 311.96 ng/ml



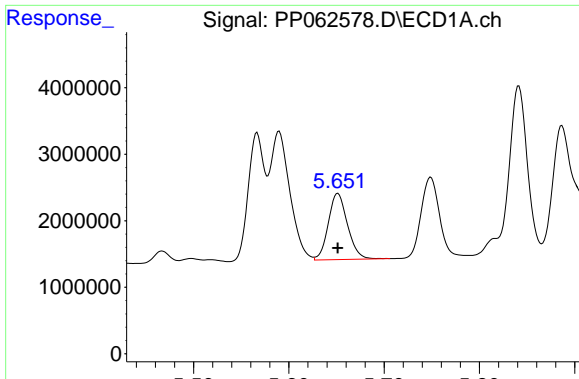
#4 AR-1016-2

R.T.: 5.590 min
 Delta R.T.: 0.000 min
 Response: 27864284
 Conc: 274.58 ng/ml



#4 AR-1016-2

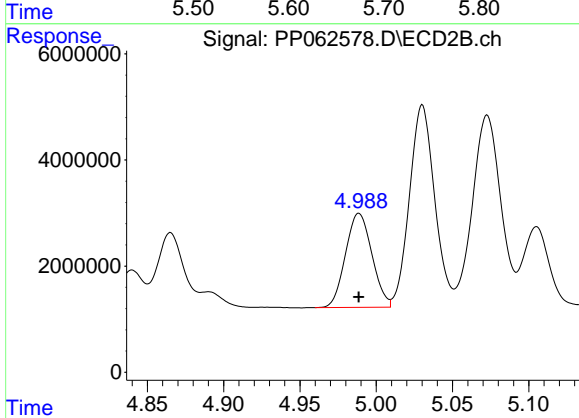
R.T.: 4.808 min
 Delta R.T.: -0.001 min
 Response: 29491261
 Conc: 220.20 ng/ml



#5 AR-1016-3

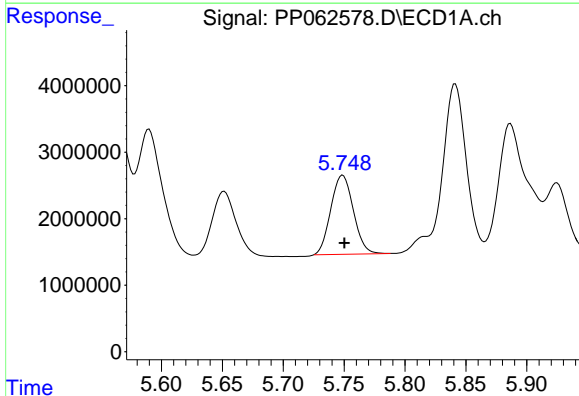
R.T.: 5.652 min
 Delta R.T.: 0.000 min
 Response: 13969009
 Conc: 221.68 ng/ml

Instrument :
 ECD_P
 ClientSampleId :
 ICVPP122123AR1248



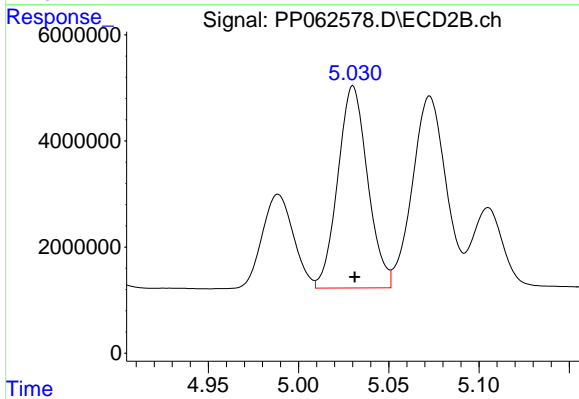
#5 AR-1016-3

R.T.: 4.989 min
 Delta R.T.: 0.000 min
 Response: 21400661
 Conc: 292.98 ng/ml



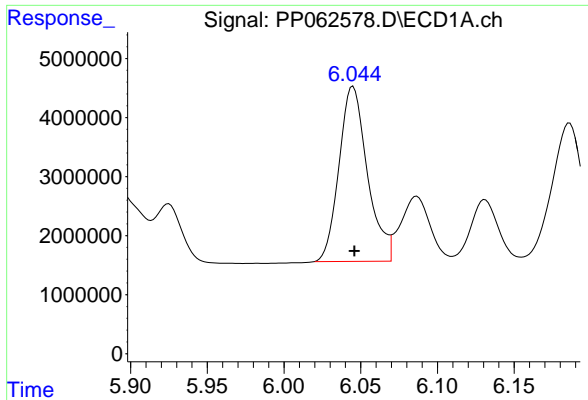
#6 AR-1016-4

R.T.: 5.749 min
 Delta R.T.: -0.001 min
 Response: 15370617
 Conc: 299.86 ng/ml



#6 AR-1016-4

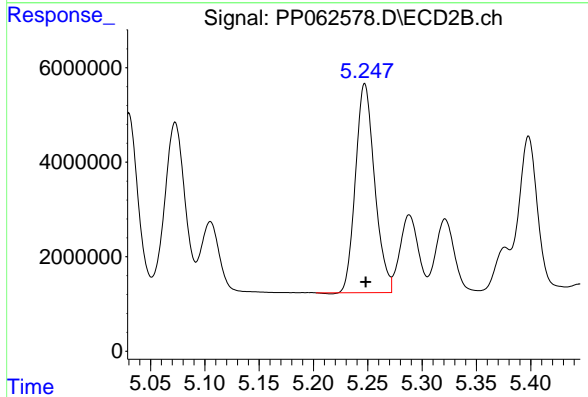
R.T.: 5.030 min
 Delta R.T.: 0.000 min
 Response: 43790157
 Conc: 718.84 ng/ml



#7 AR-1016-5

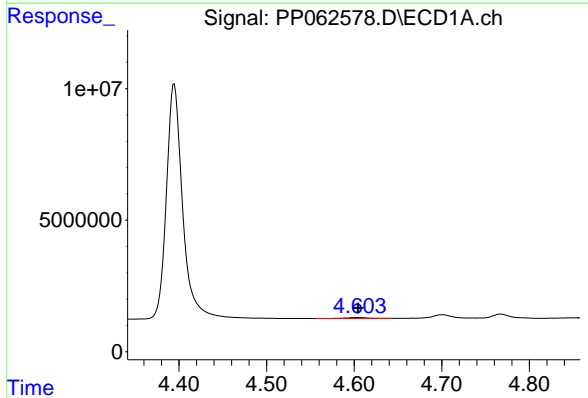
R.T.: 6.045 min
 Delta R.T.: 0.000 min
 Response: 38255411
 Conc: 722.11 ng/ml

Instrument :
 ECD_P
 ClientSampleId :
 ICVPP122123AR1248



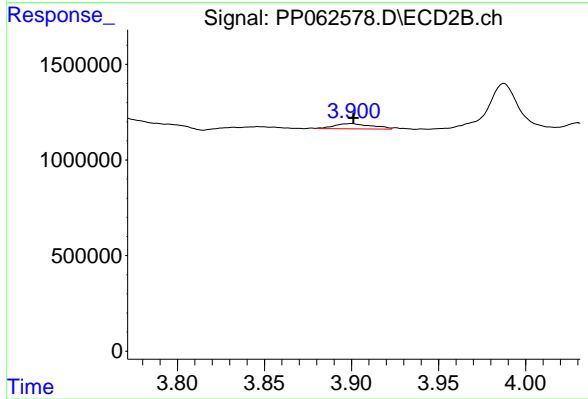
#7 AR-1016-5

R.T.: 5.247 min
 Delta R.T.: 0.000 min
 Response: 54258490
 Conc: 674.39 ng/ml



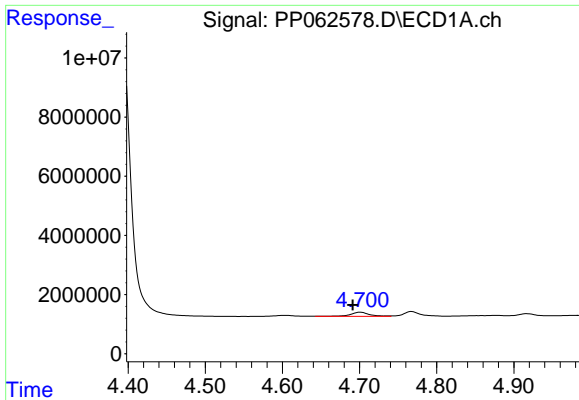
#8 AR-1221-1

R.T.: 4.604 min
 Delta R.T.: 0.000 min
 Response: 707411
 Conc: 25.95 ng/ml



#8 AR-1221-1

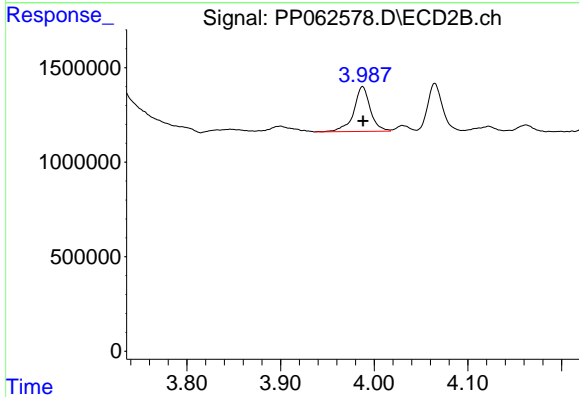
R.T.: 3.900 min
 Delta R.T.: -0.001 min
 Response: 408099
 Conc: 11.25 ng/ml



#9 AR-1221-2

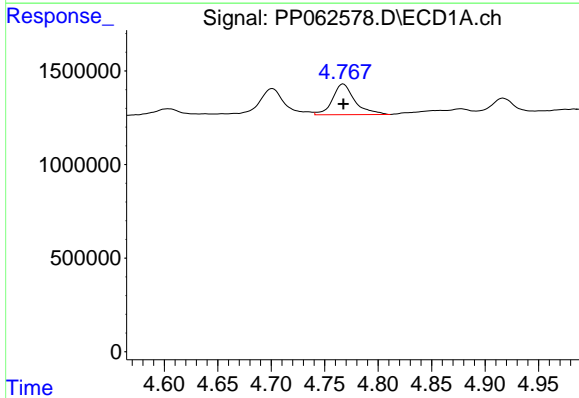
R.T.: 4.701 min
 Delta R.T.: 0.010 min
 Response: 2451719
 Conc: 120.61 ng/ml

Instrument :
 ECD_P
 ClientSampleId :
 ICVPP122123AR1248



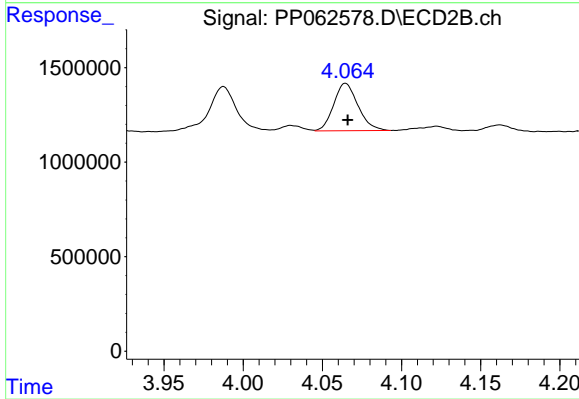
#9 AR-1221-2

R.T.: 3.988 min
 Delta R.T.: 0.000 min
 Response: 2911030
 Conc: 105.39 ng/ml



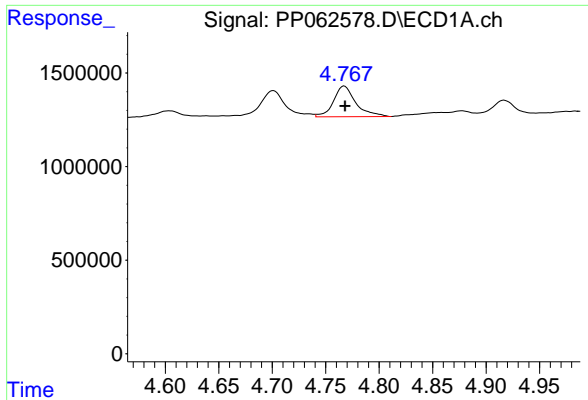
#10 AR-1221-3

R.T.: 4.767 min
 Delta R.T.: 0.000 min
 Response: 2386062
 Conc: 40.49 ng/ml



#10 AR-1221-3

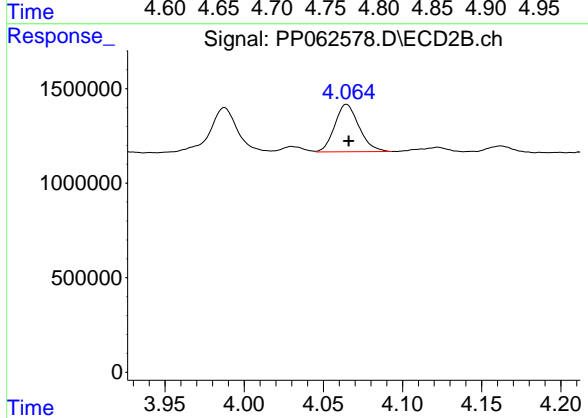
R.T.: 4.065 min
 Delta R.T.: -0.001 min
 Response: 2680617
 Conc: 33.59 ng/ml



#11 AR-1232-1

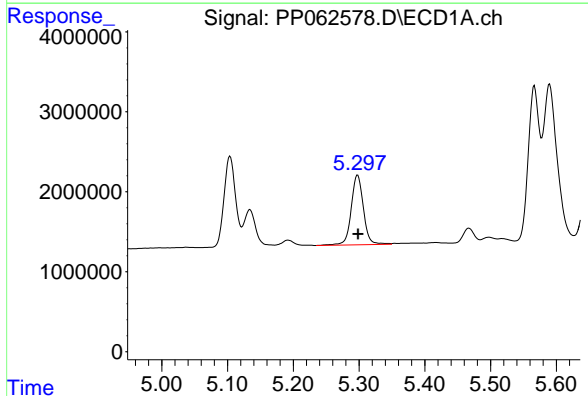
R.T.: 4.767 min
 Delta R.T.: 0.000 min
 Response: 2386062
 Conc: 49.32 ng/ml

Instrument :
 ECD_P
 ClientSampleId :
 ICVPP122123AR1248



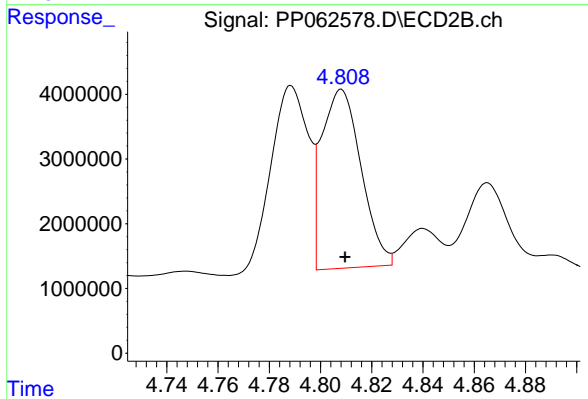
#11 AR-1232-1

R.T.: 4.065 min
 Delta R.T.: -0.001 min
 Response: 2680617
 Conc: 41.44 ng/ml



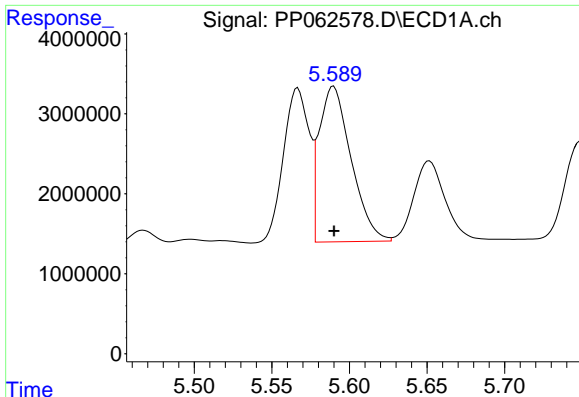
#12 AR-1232-2

R.T.: 5.298 min
 Delta R.T.: 0.000 min
 Response: 11271026
 Conc: 425.07 ng/ml



#12 AR-1232-2

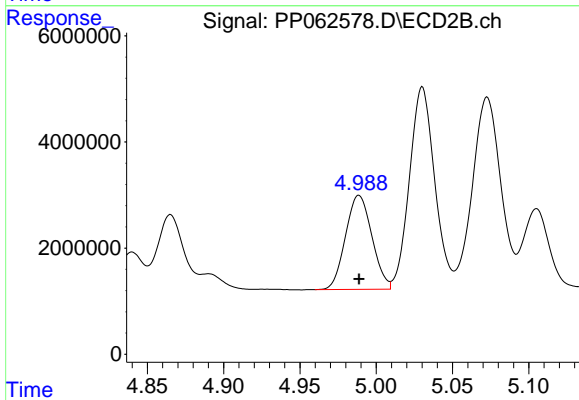
R.T.: 4.808 min
 Delta R.T.: -0.001 min
 Response: 29491261
 Conc: 468.20 ng/ml



#13 AR-1232-3

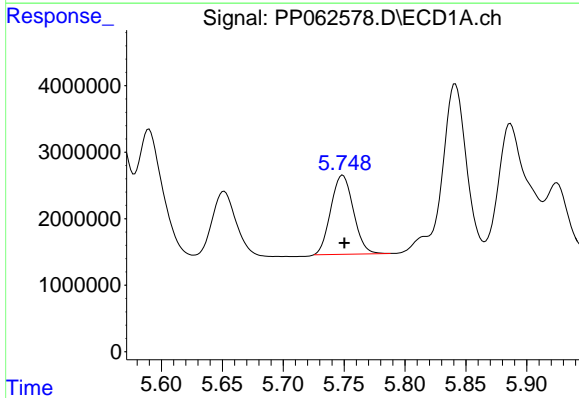
R.T.: 5.590 min
 Delta R.T.: 0.000 min
 Response: 27864284
 Conc: 591.91 ng/ml

Instrument :
 ECD_P
 ClientSampleId :
 ICVPP122123AR1248



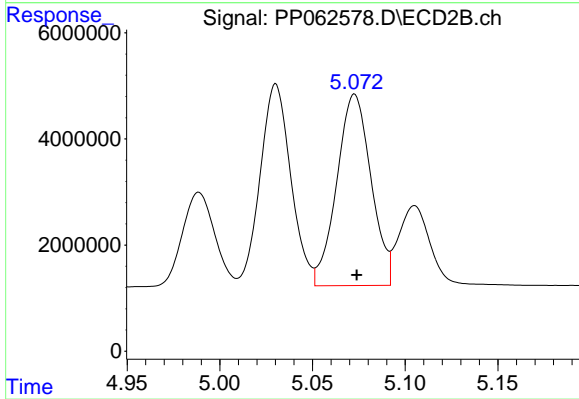
#13 AR-1232-3

R.T.: 4.989 min
 Delta R.T.: 0.000 min
 Response: 21400661
 Conc: 628.23 ng/ml



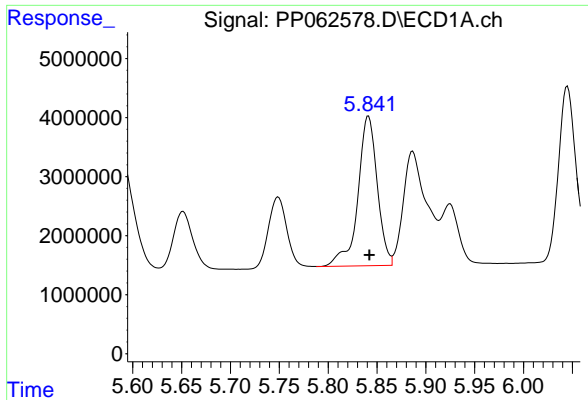
#14 AR-1232-4

R.T.: 5.749 min
 Delta R.T.: -0.001 min
 Response: 15370617
 Conc: 638.55 ng/ml



#14 AR-1232-4

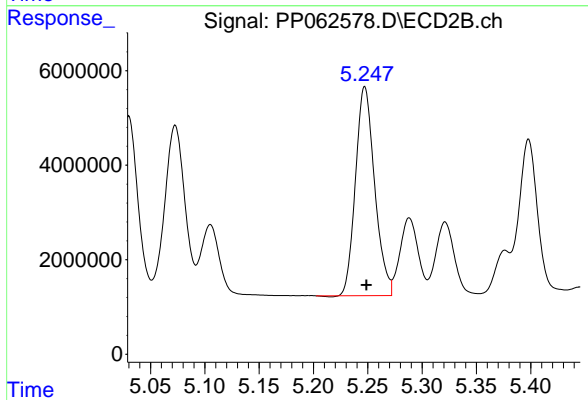
R.T.: 5.073 min
 Delta R.T.: -0.001 min
 Response: 46381416
 Conc: 1421.49 ng/ml



#15 AR-1232-5

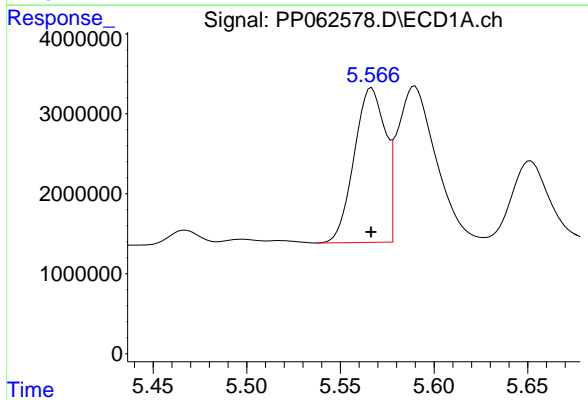
R.T.: 5.841 min
 Delta R.T.: 0.000 min
 Response: 35081779
 Conc: 1754.87 ng/ml

Instrument :
 ECD_P
 ClientSampleId :
 ICVPP122123AR1248



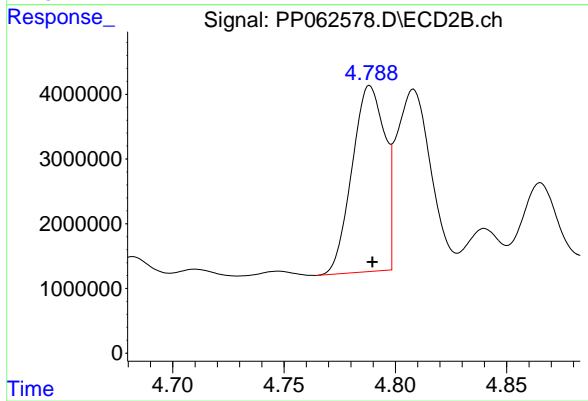
#15 AR-1232-5

R.T.: 5.247 min
 Delta R.T.: -0.002 min
 Response: 54258490
 Conc: 1534.44 ng/ml



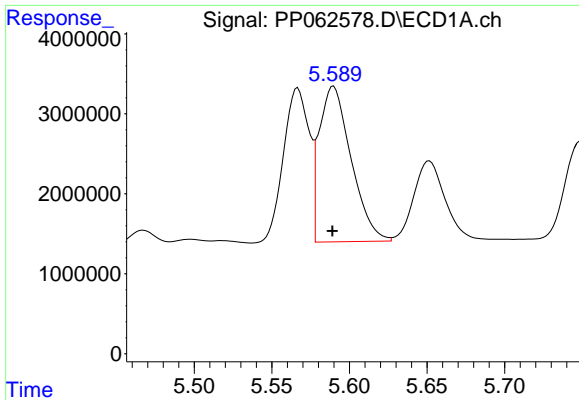
#16 AR-1242-1

R.T.: 5.567 min
 Delta R.T.: 0.000 min
 Response: 22347898
 Conc: 398.74 ng/ml



#16 AR-1242-1

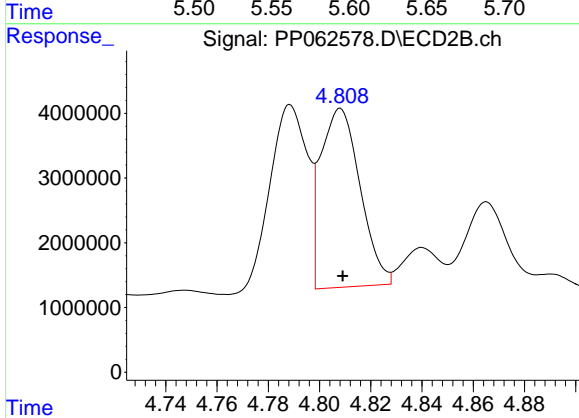
R.T.: 4.788 min
 Delta R.T.: -0.001 min
 Response: 29292741
 Conc: 381.21 ng/ml



#17 AR-1242-2

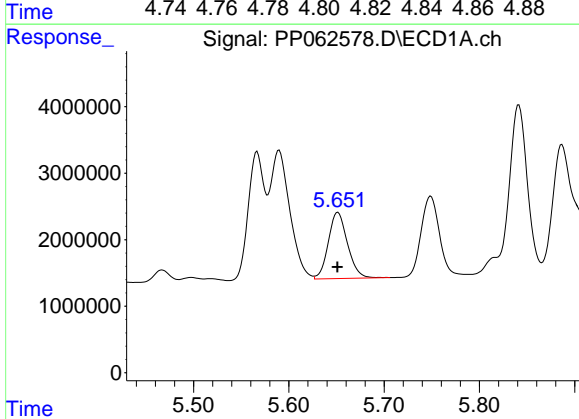
R.T.: 5.590 min
 Delta R.T.: 0.000 min
 Response: 27864284
 Conc: 337.54 ng/ml

Instrument :
 ECD_P
 ClientSampleId :
 ICVPP122123AR1248



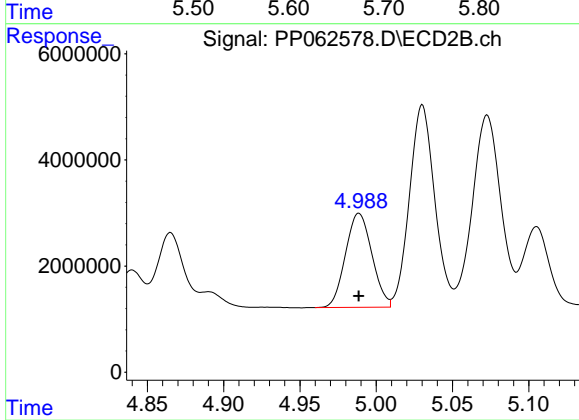
#17 AR-1242-2

R.T.: 4.808 min
 Delta R.T.: 0.000 min
 Response: 29491261
 Conc: 273.74 ng/ml



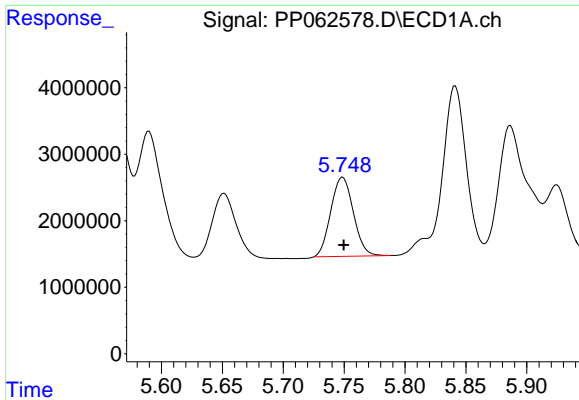
#18 AR-1242-3

R.T.: 5.652 min
 Delta R.T.: 0.000 min
 Response: 13969009
 Conc: 272.93 ng/ml



#18 AR-1242-3

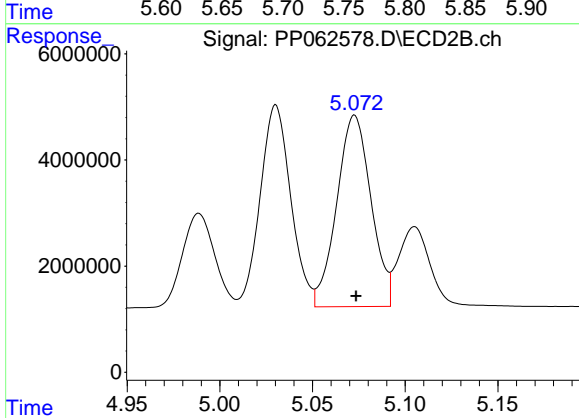
R.T.: 4.989 min
 Delta R.T.: 0.000 min
 Response: 21400661
 Conc: 363.26 ng/ml



#19 AR-1242-4

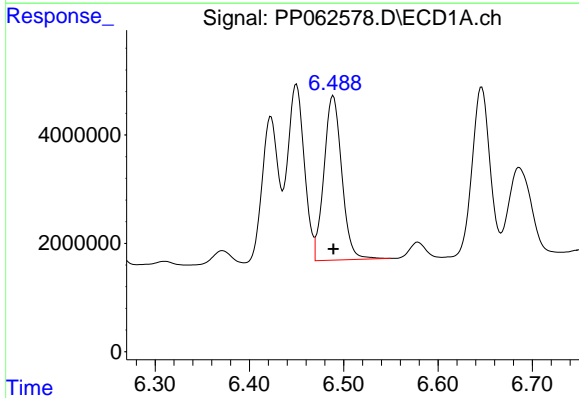
R.T.: 5.749 min
 Delta R.T.: 0.000 min
 Response: 15370617
 Conc: 367.03 ng/ml

Instrument :
 ECD_P
 ClientSampleId :
 ICVPP122123AR1248



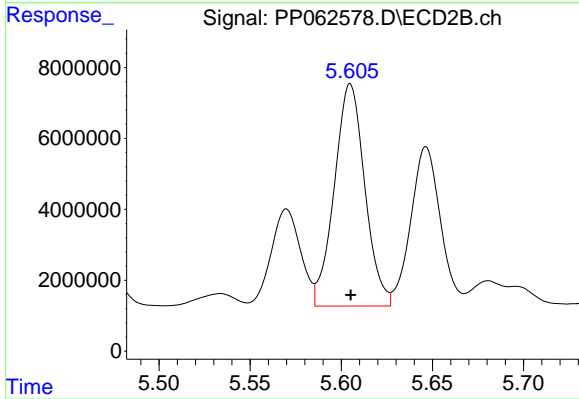
#19 AR-1242-4

R.T.: 5.073 min
 Delta R.T.: 0.000 min
 Response: 46381416
 Conc: 753.13 ng/ml



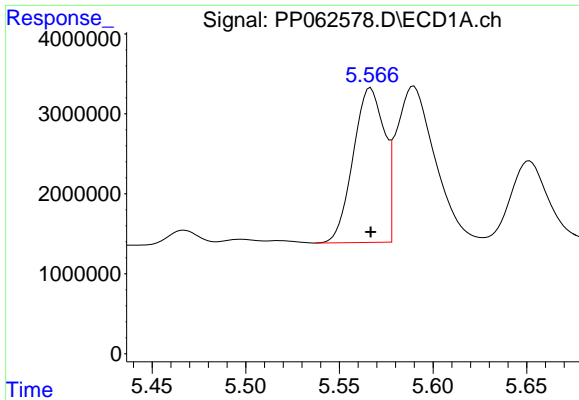
#20 AR-1242-5

R.T.: 6.489 min
 Delta R.T.: 0.000 min
 Response: 39836049
 Conc: 928.69 ng/ml



#20 AR-1242-5

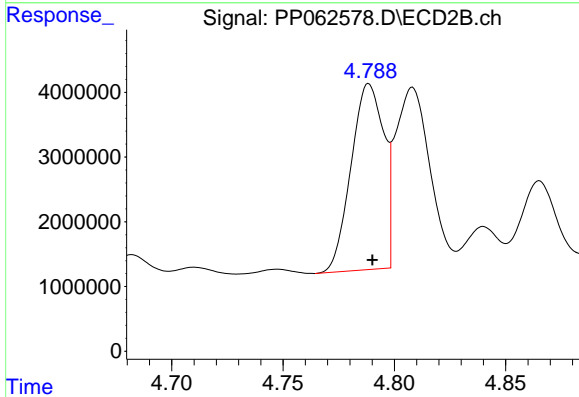
R.T.: 5.605 min
 Delta R.T.: 0.000 min
 Response: 73034428
 Conc: 1011.06 ng/ml



#21 AR-1248-1

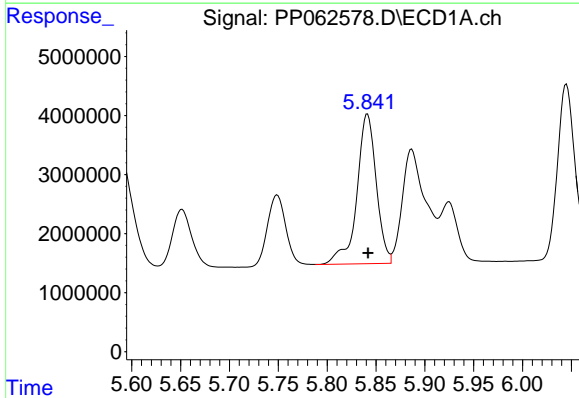
R.T.: 5.567 min
 Delta R.T.: 0.000 min
 Response: 22347898
 Conc: 517.87 ng/ml

Instrument :
 ECD_P
 ClientSampleId :
 ICVPP122123AR1248



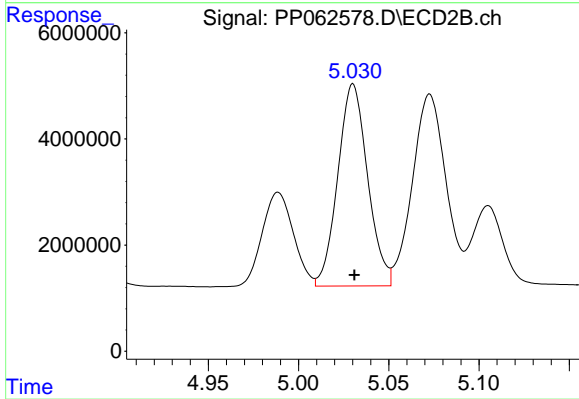
#21 AR-1248-1

R.T.: 4.788 min
 Delta R.T.: -0.002 min
 Response: 29292741
 Conc: 504.89 ng/ml



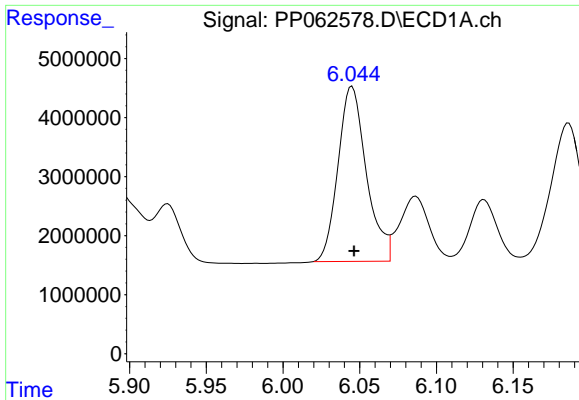
#22 AR-1248-2

R.T.: 5.841 min
 Delta R.T.: 0.000 min
 Response: 35081779
 Conc: 516.91 ng/ml



#22 AR-1248-2

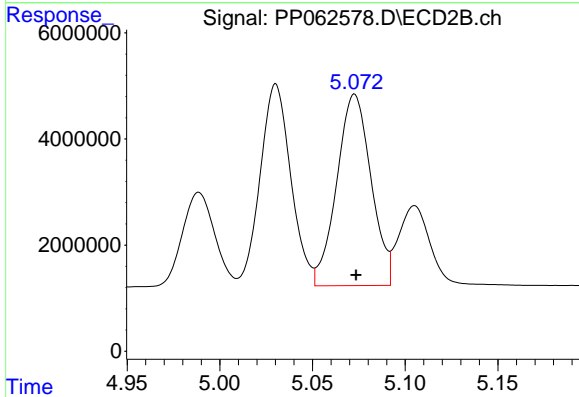
R.T.: 5.030 min
 Delta R.T.: 0.000 min
 Response: 43790157
 Conc: 502.60 ng/ml



#23 AR-1248-3

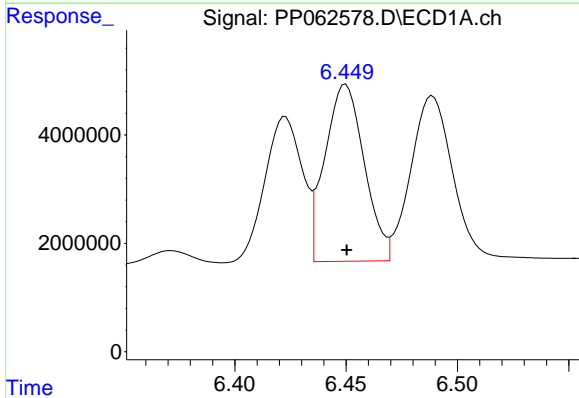
R.T.: 6.045 min
 Delta R.T.: -0.001 min
 Response: 38255411
 Conc: 519.07 ng/ml

Instrument :
 ECD_P
 ClientSampleId :
 ICVPP122123AR1248



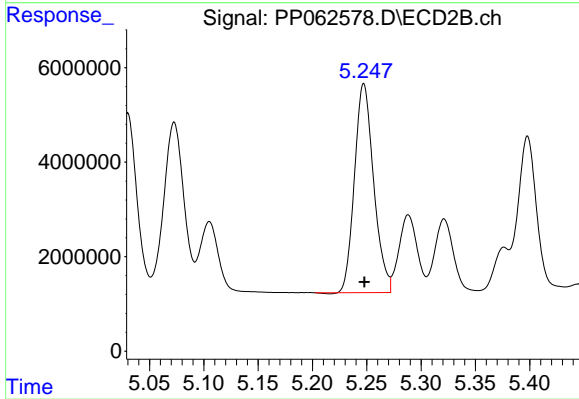
#23 AR-1248-3

R.T.: 5.073 min
 Delta R.T.: 0.000 min
 Response: 46381416
 Conc: 508.02 ng/ml



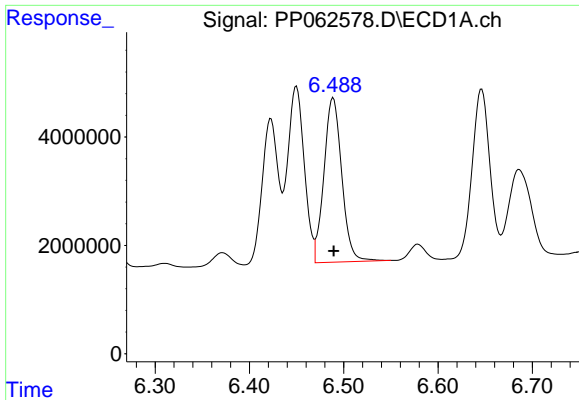
#24 AR-1248-4

R.T.: 6.450 min
 Delta R.T.: 0.000 min
 Response: 40178081
 Conc: 527.48 ng/ml



#24 AR-1248-4

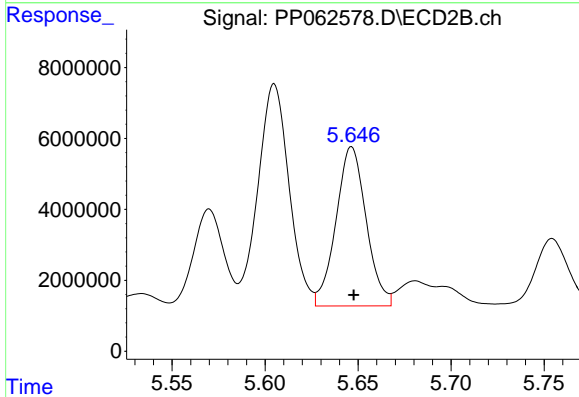
R.T.: 5.247 min
 Delta R.T.: 0.000 min
 Response: 54258490
 Conc: 505.41 ng/ml



#25 AR-1248-5

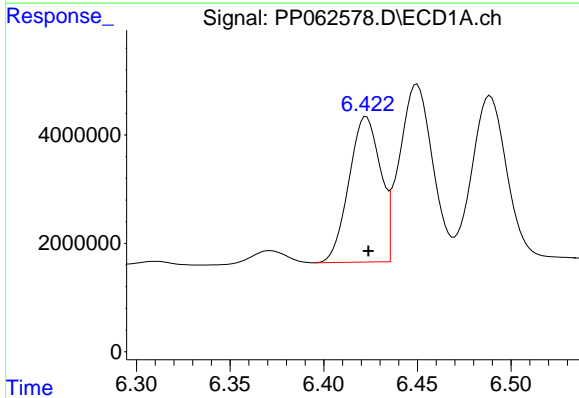
R.T.: 6.489 min
 Delta R.T.: 0.000 min
 Response: 39836049
 Conc: 525.42 ng/ml

Instrument :
 ECD_P
 ClientSampleId :
 ICVPP122123AR1248



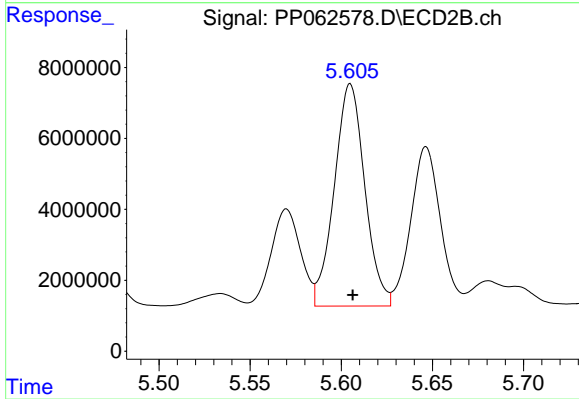
#25 AR-1248-5

R.T.: 5.647 min
 Delta R.T.: -0.001 min
 Response: 50808561
 Conc: 511.90 ng/ml



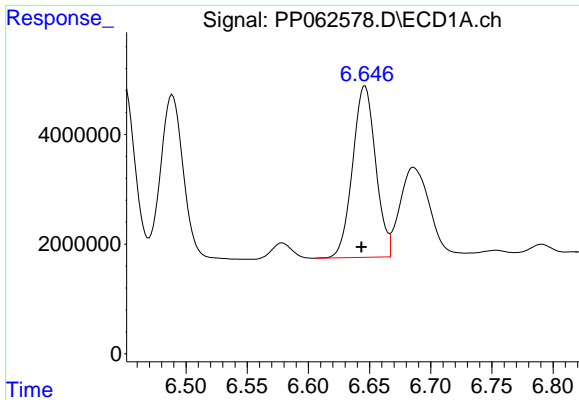
#26 AR-1254-1

R.T.: 6.423 min
 Delta R.T.: -0.001 min
 Response: 31406141
 Conc: 380.58 ng/ml



#26 AR-1254-1

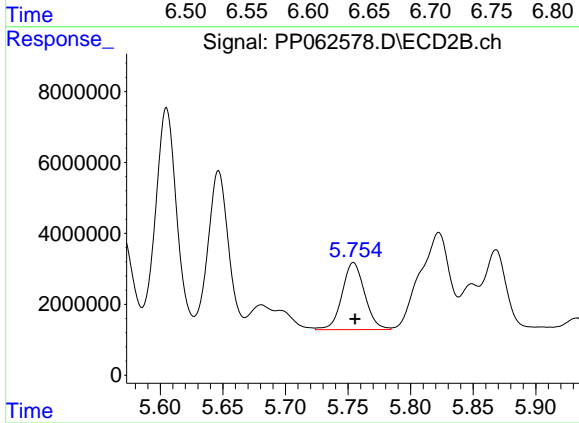
R.T.: 5.605 min
 Delta R.T.: -0.001 min
 Response: 73034428
 Conc: 460.05 ng/ml



#27 AR-1254-2

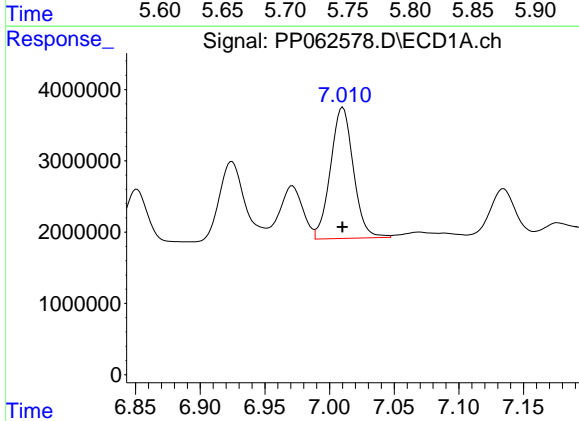
R.T.: 6.646 min
 Delta R.T.: 0.003 min
 Response: 41001975
 Conc: 319.83 ng/ml

Instrument :
 ECD_P
 ClientSampleId :
 ICVPP122123AR1248



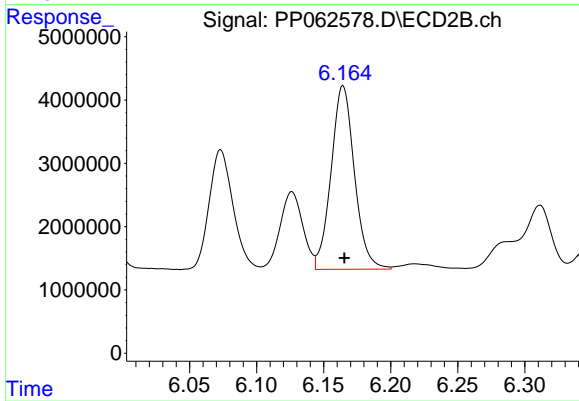
#27 AR-1254-2

R.T.: 5.754 min
 Delta R.T.: -0.001 min
 Response: 23726700
 Conc: 170.12 ng/ml



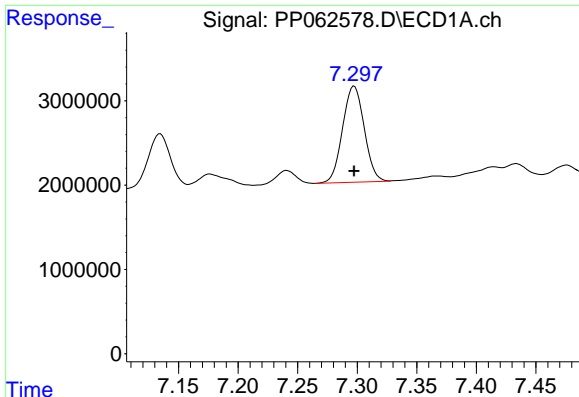
#28 AR-1254-3

R.T.: 7.010 min
 Delta R.T.: 0.000 min
 Response: 22637470
 Conc: 175.33 ng/ml



#28 AR-1254-3

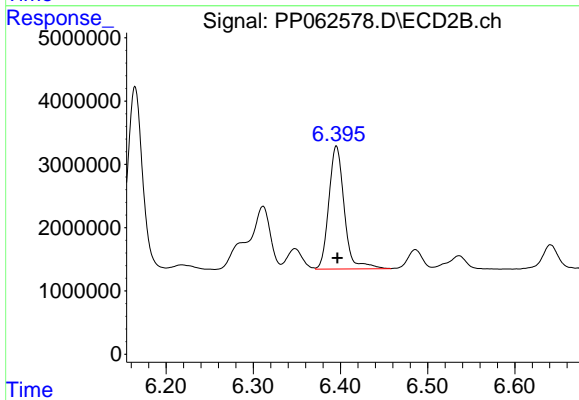
R.T.: 6.164 min
 Delta R.T.: -0.001 min
 Response: 35122973
 Conc: 158.93 ng/ml



#29 AR-1254-4

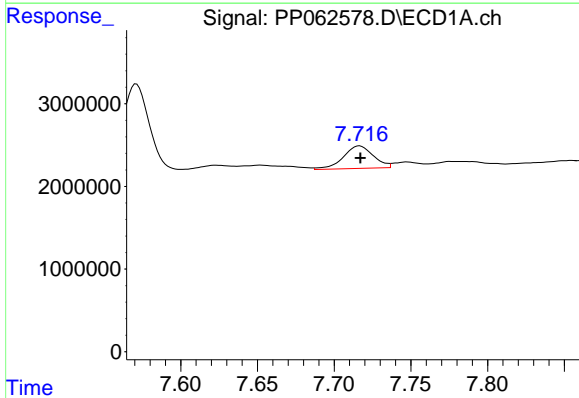
R.T.: 7.298 min
 Delta R.T.: 0.000 min
 Response: 14424913
 Conc: 160.08 ng/ml

Instrument :
 ECD_P
 ClientSampleId :
 ICVPP122123AR1248



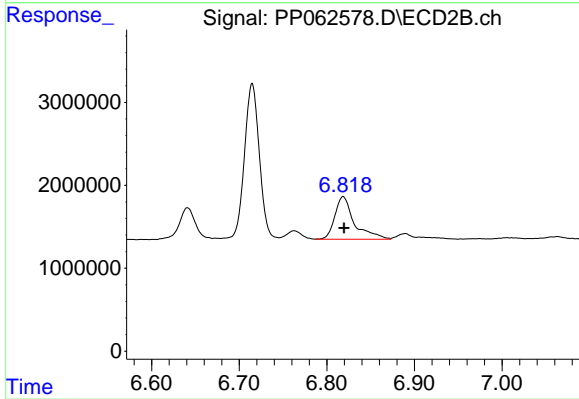
#29 AR-1254-4

R.T.: 6.395 min
 Delta R.T.: -0.001 min
 Response: 23820027
 Conc: 184.22 ng/ml



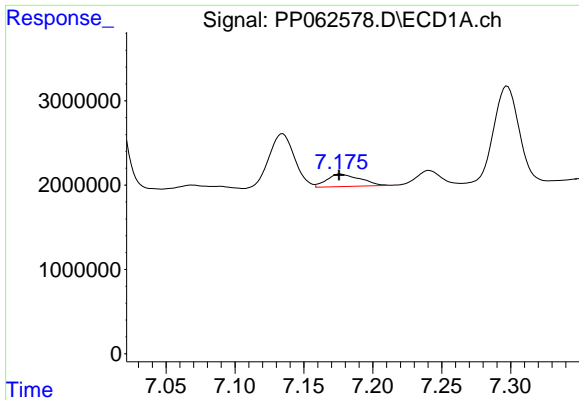
#30 AR-1254-5

R.T.: 7.717 min
 Delta R.T.: 0.000 min
 Response: 3727960
 Conc: 38.05 ng/ml



#30 AR-1254-5

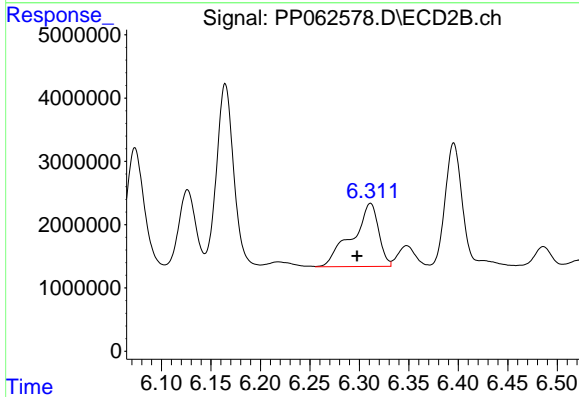
R.T.: 6.819 min
 Delta R.T.: -0.001 min
 Response: 7911867
 Conc: 41.23 ng/ml



#31 AR-1260-1

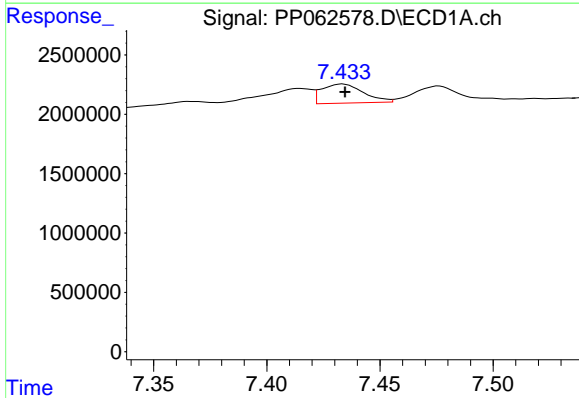
R.T.: 7.176 min
 Delta R.T.: 0.000 min
 Response: 2482676
 Conc: 25.08 ng/ml

Instrument :
 ECD_P
 ClientSampleId :
 ICVPP122123AR1248



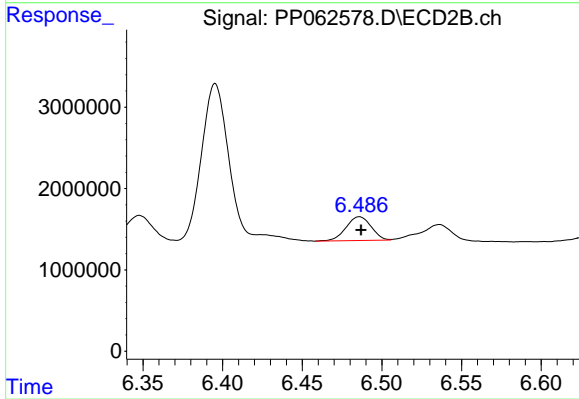
#31 AR-1260-1

R.T.: 6.311 min
 Delta R.T.: 0.014 min
 Response: 18562157
 Conc: 116.12 ng/ml



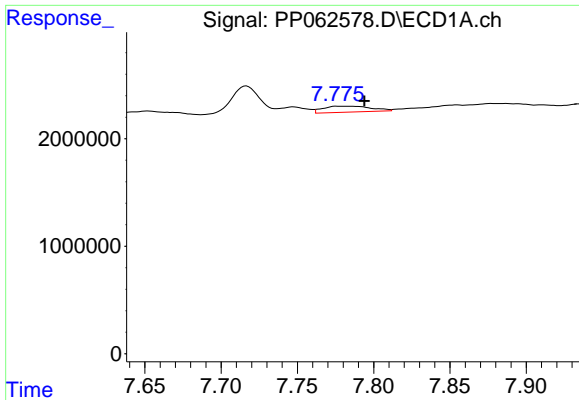
#32 AR-1260-2

R.T.: 7.434 min
 Delta R.T.: 0.000 min
 Response: 2059149
 Conc: 18.15 ng/ml



#32 AR-1260-2

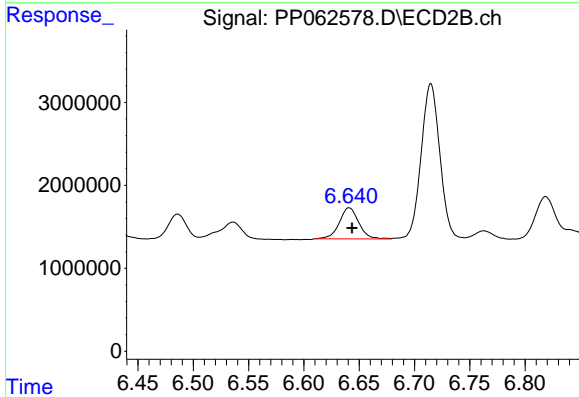
R.T.: 6.486 min
 Delta R.T.: -0.001 min
 Response: 3199993
 Conc: 17.48 ng/ml



#33 AR-1260-3

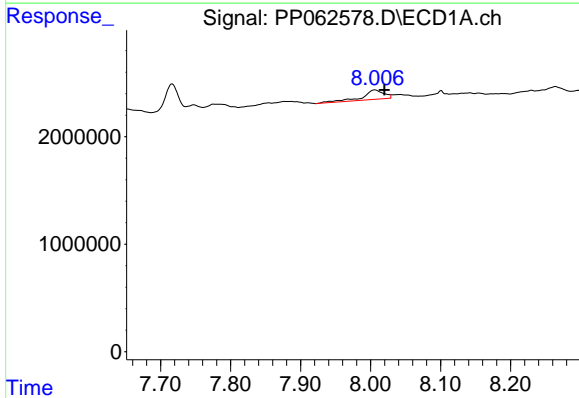
R.T.: 7.776 min
 Delta R.T.: -0.018 min
 Response: 1211055
 Conc: 14.13 ng/ml

Instrument :
 ECD_P
 ClientSampleId :
 ICVPP122123AR1248



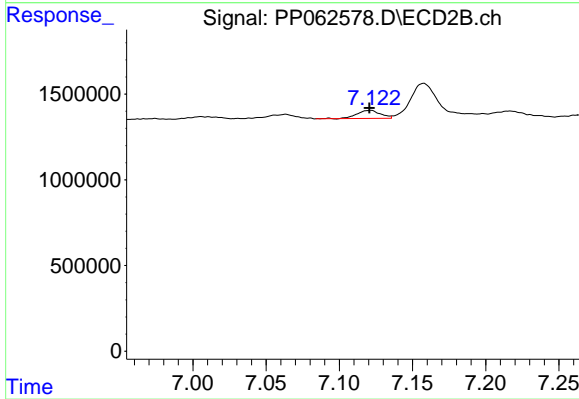
#33 AR-1260-3

R.T.: 6.641 min
 Delta R.T.: -0.002 min
 Response: 4593200
 Conc: 25.54 ng/ml



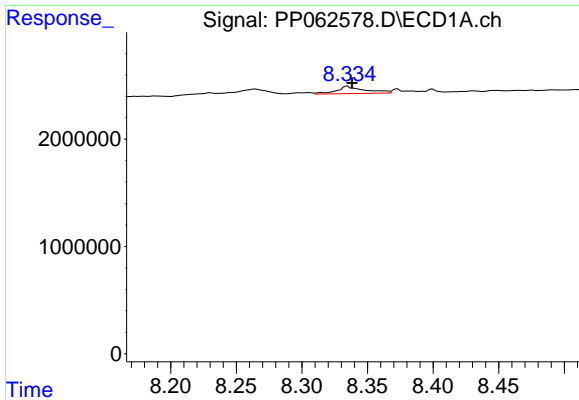
#34 AR-1260-4

R.T.: 8.006 min
 Delta R.T.: -0.013 min
 Response: 1861340
 Conc: 19.22 ng/ml



#34 AR-1260-4

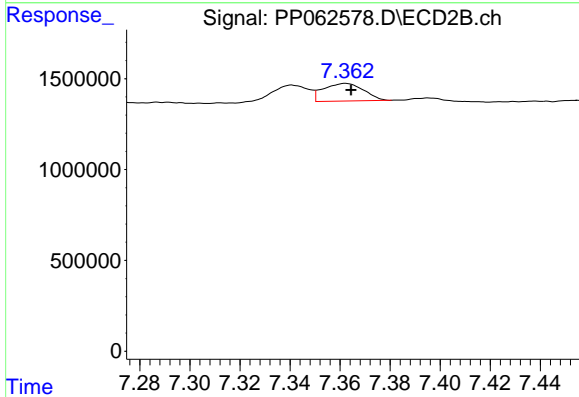
R.T.: 7.121 min
 Delta R.T.: 0.000 min
 Response: 531787
 Conc: 3.61 ng/ml



#35 AR-1260-5

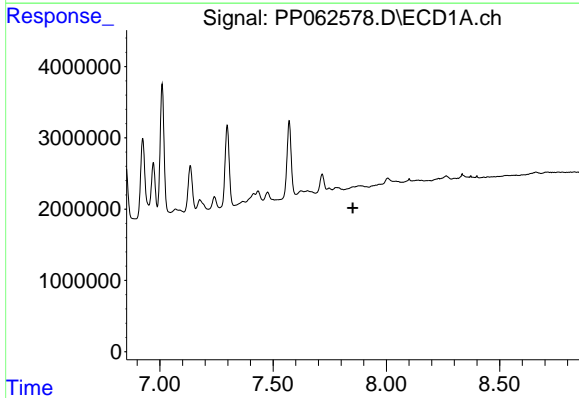
R.T.: 8.335 min
 Delta R.T.: -0.004 min
 Response: 1019716
 Conc: 5.72 ng/ml

Instrument :
 ECD_P
 ClientSampleId :
 ICVPP122123AR1248



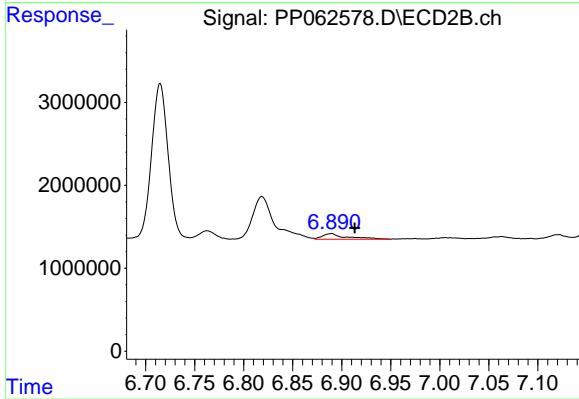
#35 AR-1260-5

R.T.: 7.362 min
 Delta R.T.: -0.002 min
 Response: 1085880
 Conc: 3.37 ng/ml



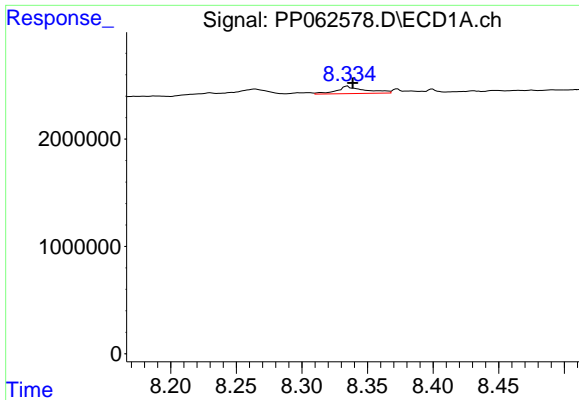
#36 AR-1262-1

R.T.: 0.000 min
 Exp R.T. : 7.852 min
 Response: 0
 Conc: N.D.



#36 AR-1262-1

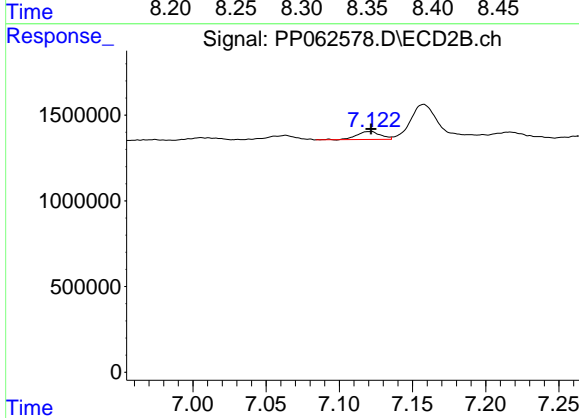
R.T.: 6.889 min
 Delta R.T.: -0.024 min
 Response: 1135375
 Conc: 12.78 ng/ml



#37 AR-1262-2

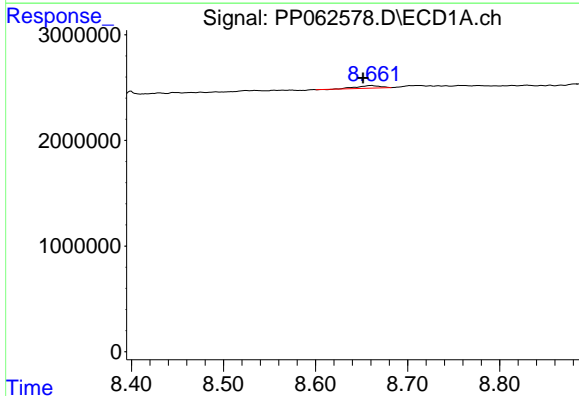
R.T.: 8.335 min
 Delta R.T.: -0.004 min
 Response: 1019716
 Conc: 5.03 ng/ml

Instrument :
 ECD_P
 ClientSampleId :
 ICVPP122123AR1248



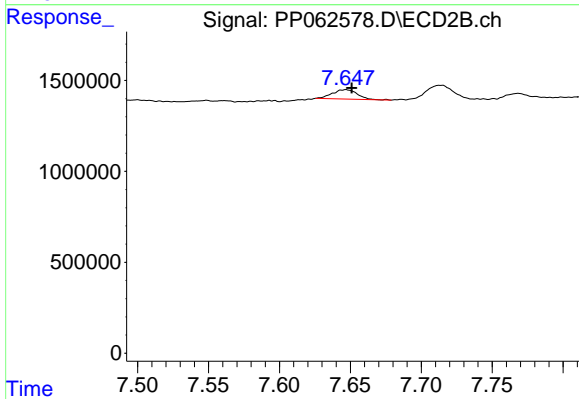
#37 AR-1262-2

R.T.: 7.121 min
 Delta R.T.: 0.000 min
 Response: 531787
 Conc: 2.85 ng/ml



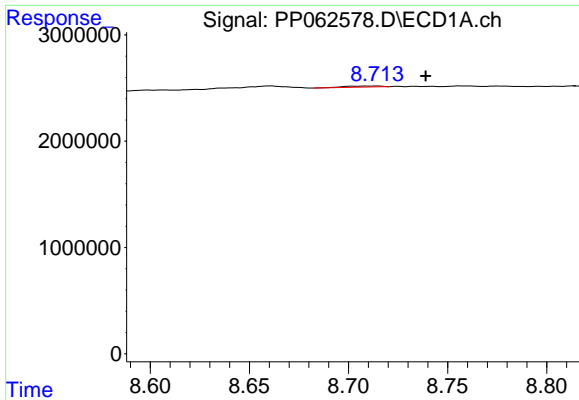
#38 AR-1262-3

R.T.: 8.661 min
 Delta R.T.: 0.009 min
 Response: 422385
 Conc: 3.14 ng/ml



#38 AR-1262-3

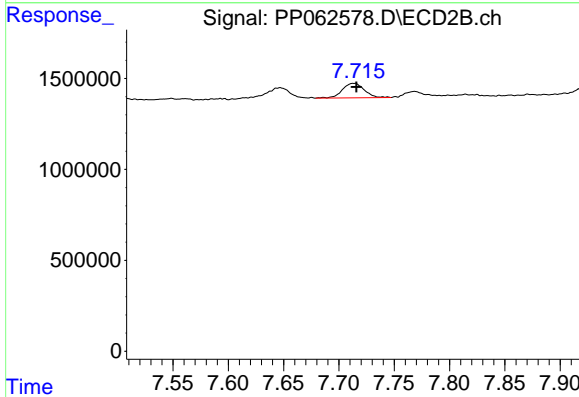
R.T.: 7.647 min
 Delta R.T.: -0.004 min
 Response: 631784
 Conc: 5.79 ng/ml



#39 AR-1262-4

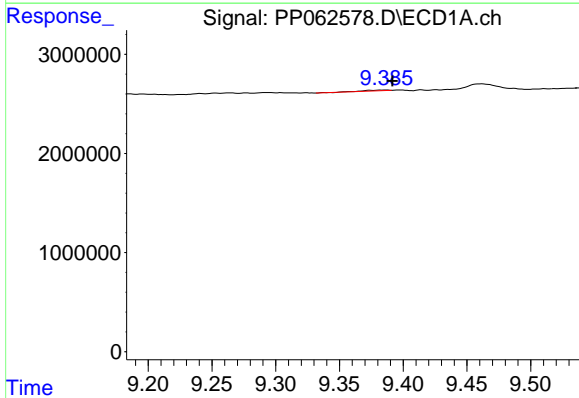
R.T.: 8.714 min
 Delta R.T.: -0.025 min
 Response: 136684
 Conc: 1.34 ng/ml

Instrument : ECD_P
 ClientSampleId : ICVPP122123AR1248



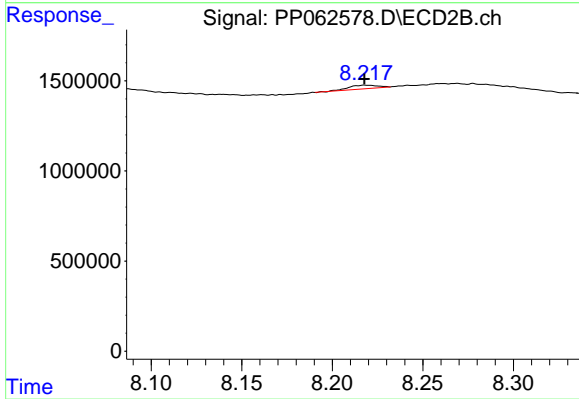
#39 AR-1262-4

R.T.: 7.714 min
 Delta R.T.: -0.002 min
 Response: 1109136
 Conc: 4.32 ng/ml



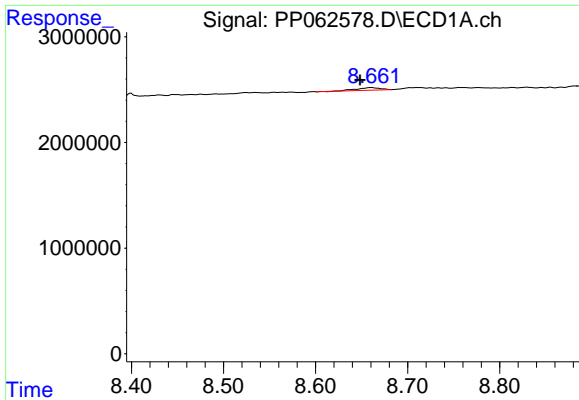
#40 AR-1262-5

R.T.: 9.386 min
 Delta R.T.: -0.005 min
 Response: 92187
 Conc: 1.42 ng/ml



#40 AR-1262-5

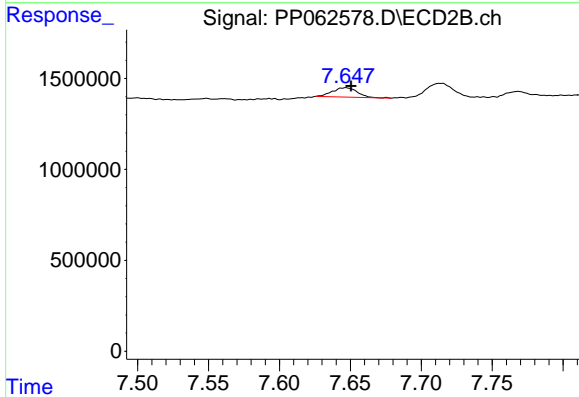
R.T.: 8.218 min
 Delta R.T.: 0.000 min
 Response: 223432
 Conc: 1.96 ng/ml



#41 AR-1268-1

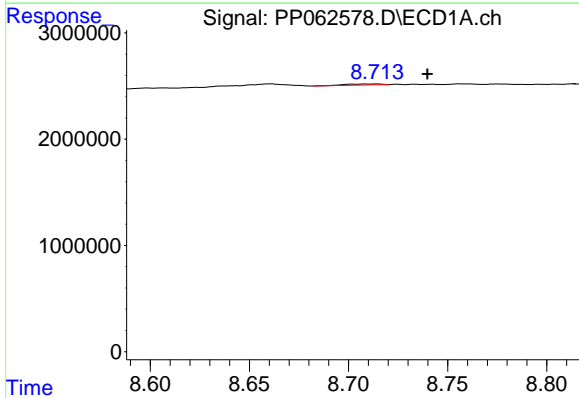
R.T.: 8.661 min
 Delta R.T.: 0.013 min
 Response: 422385
 Conc: 1.87 ng/ml

Instrument : ECD_P
 ClientSampleId : ICVPP122123AR1248



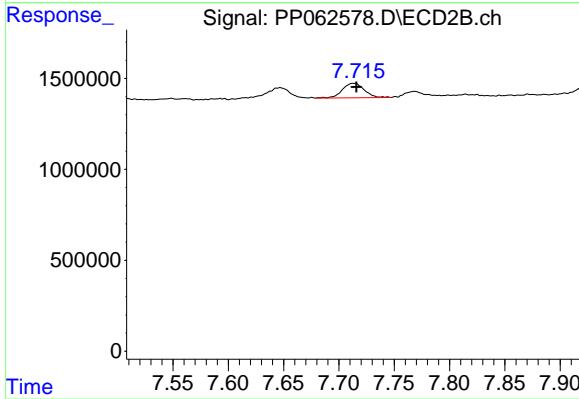
#41 AR-1268-1

R.T.: 7.647 min
 Delta R.T.: -0.004 min
 Response: 631784
 Conc: 1.64 ng/ml



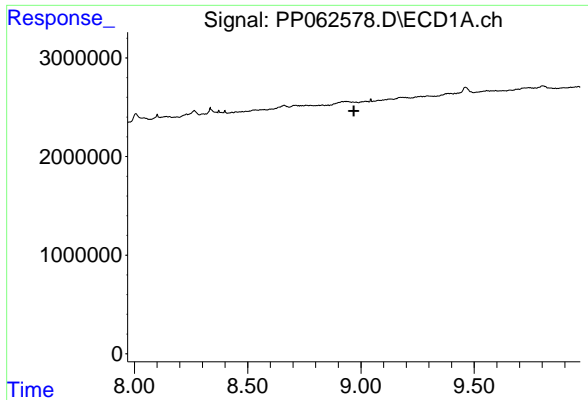
#42 AR-1268-2

R.T.: 8.714 min
 Delta R.T.: -0.026 min
 Response: 136684
 Conc: 0.68 ng/ml



#42 AR-1268-2

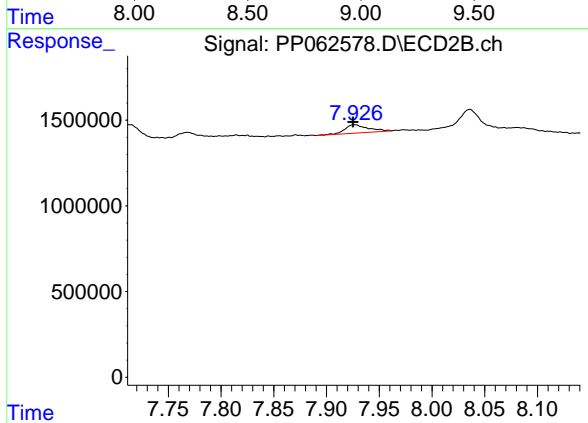
R.T.: 7.714 min
 Delta R.T.: -0.002 min
 Response: 1109136
 Conc: 3.13 ng/ml



#43 AR-1268-3

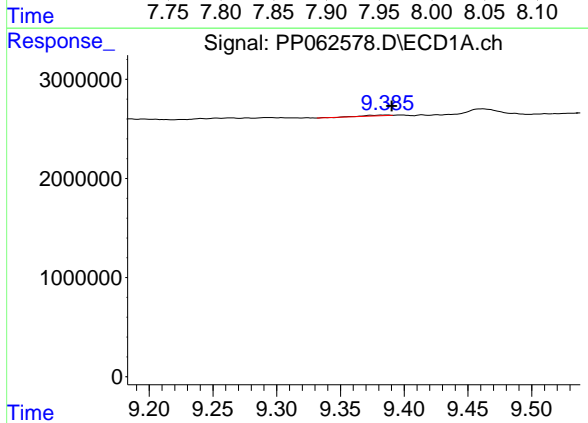
R.T.: 0.000 min
 Exp R.T.: 8.968 min
 Response: 0
 Conc: N.D.

Instrument : ECD_P
 ClientSampleId : ICVPP122123AR1248



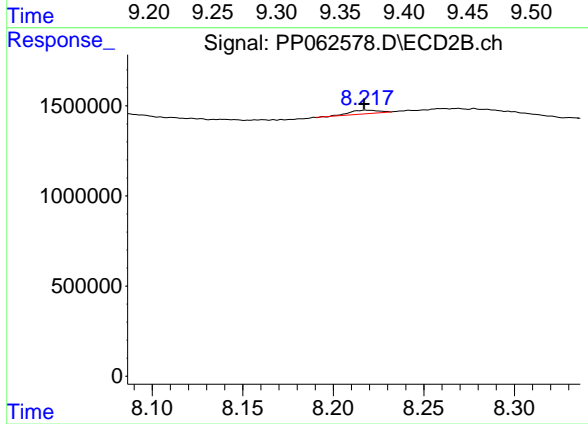
#43 AR-1268-3

R.T.: 7.926 min
 Delta R.T.: 0.002 min
 Response: 757752
 Conc: 2.42 ng/ml



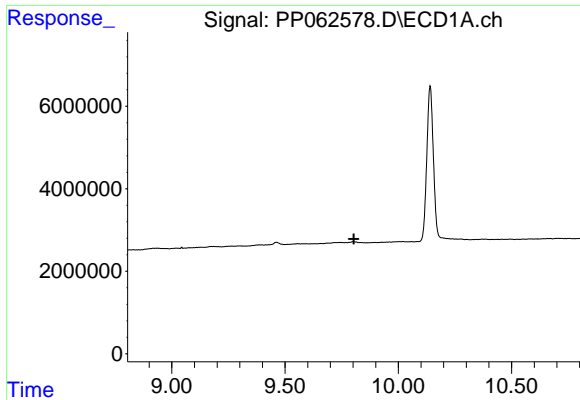
#44 AR-1268-4

R.T.: 9.386 min
 Delta R.T.: -0.004 min
 Response: 92187
 Conc: 1.36 ng/ml



#44 AR-1268-4

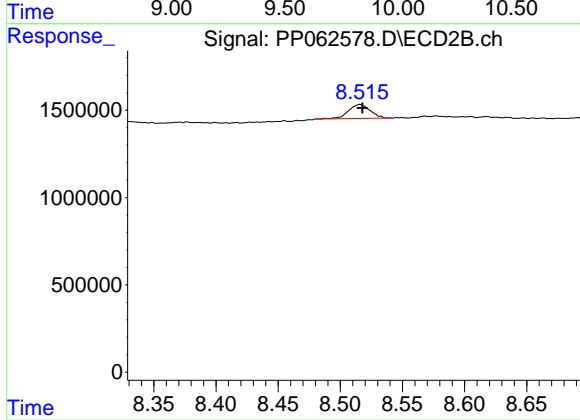
R.T.: 8.218 min
 Delta R.T.: 0.001 min
 Response: 223432
 Conc: 1.79 ng/ml



#45 AR-1268-5

R.T.: 0.000 min
 Exp R.T.: 9.804 min
 Response: 0
 Conc: N.D.

Instrument :
 ECD_P
 ClientSampleId :
 ICVPP122123AR1248



#45 AR-1268-5

R.T.: 8.516 min
 Delta R.T.: -0.002 min
 Response: 964920
 Conc: 1.10 ng/ml