

Data Path : Z:\pestpcbsrv\HPCHEM1\ECD\_P\Data\PP122222\  
 Data File : PP053942.D  
 Signal(s) : Signal #1: ECD1A.ch Signal #2: ECD2B.ch  
 Acq On : 22 Dec 2022 09:40  
 Operator : YP\AJ  
 Sample : AR1242CCC500  
 Misc :  
 ALS Vial : 4 Sample Multiplier: 1

Instrument :  
 ECD\_P  
 ClientSampleId :

Integration File signal 1: autoint1.e  
 Integration File signal 2: autoint2.e  
 Quant Time: Dec 22 13:52:41 2022  
 Quant Method : Z:\pestpcbsrv\HPCHEM1\ECD\_P\methods\PP121322.M  
 Quant Title : GC EXTRACTABLES  
 QLast Update : Wed Dec 14 05:38:40 2022  
 Response via : Initial Calibration  
 Integrator: ChemStation

Volume Inj. : 2 µl  
 Signal #1 Phase : ZB-MR1 Signal #2 Phase: ZB-MR2  
 Signal #1 Info : 30Mx0.32mmx 0.50µ Signal #2 Info : 30M x 0.32mm x 0.25µm

Compound	RT#1	RT#2	Resp#1	Resp#2	ng/ml	ng/ml
System Monitoring Compounds						
1) SA Tetrachlo...	4.337	3.588	110.0E6	79191450	52.392	50.707
2) SA Decachlor...	10.097	8.621	84485899	72404997	49.763	51.838
Target Compounds						
3) L1 AR-1016-1	5.509	4.678	28578760	18833147	421.458	410.071
4) L1 AR-1016-2	5.532	4.697	40173583	25552165	403.306	407.804
5) L1 AR-1016-3	5.594	4.874	25833246	13914013	408.747	409.943
6) L1 AR-1016-4	5.692	4.916	20837973	11998839	420.523	402.665
7) L1 AR-1016-5	5.989	5.130	22560800	15916869	428.621	438.946
8) L2 AR-1221-1	4.543	3.802	3305182	2423450	128.297	125.163
9) L2 AR-1221-2	4.634	3.889	4750573	3557606	244.009	243.382
10) L2 AR-1221-3	4.709	3.965	16450581	12234070	283.066	275.040
11) L3 AR-1232-1	4.709	3.965	16450581	12234070	367.291	355.524
12) L3 AR-1232-2	5.240	4.697	21424896	25552165	832.892	856.127
13) L3 AR-1232-3	5.532	4.874	40173583	13914013	855.906	878.213
14) L3 AR-1232-4	5.692	4.959	20837973	14872181	879.459	962.437
15) L3 AR-1232-5	5.784	5.130	17853716	15916869	968.069	966.592
16) L4 AR-1242-1	5.509	4.678	28578760	18833147	545.596	531.807
17) L4 AR-1242-2	5.532	4.697	40173583	25552165	527.271	531.869
18) L4 AR-1242-3	5.594	4.874	25833246	13914013	527.264	533.700
19) L4 AR-1242-4	5.692	4.959	20837973	14872181	542.814	521.307
20) L4 AR-1242-5	6.433	5.483	21897640	17605828	536.889	576.801
21) L5 AR-1248-1	5.509	4.678	28578760	18833147	678.093	662.033
22) L5 AR-1248-2	5.784	4.916	17853716	11998839	282.494	290.046
23) L5 AR-1248-3	5.989	4.959	22560800	14872181	322.091	354.120
24) L5 AR-1248-4	6.394	5.130	21023066	15916869	298.087	330.814
25) L5 AR-1248-5	6.433	5.525	21897640	13399450	310.754	356.855
26) L6 AR-1254-1	6.366	5.483	16775990	17605828	216.485	268.860
27) L6 AR-1254-2	6.590	5.632	20769077	5817035	178.510	99.744 #
28) L6 AR-1254-3	6.955	6.037	10302083	7269707	87.956	82.637
29) L6 AR-1254-4	7.242	6.267	7196149	4541678	90.771	99.131
30) L6 AR-1254-5	7.662	6.687	3795221	3034599	38.915	38.938
31) L7 AR-1260-1	7.121	6.182	2012821	4168616	20.842	63.907 #
32) L7 AR-1260-2	7.378	6.357	2753949	1523764	24.929	20.235
33) L7 AR-1260-3	7.723f	6.510	584042	1530854	7.724	21.120 #
34) L7 AR-1260-4	7.951f	6.985	2097034	152592	22.343	2.812 #
35) L7 AR-1260-5	8.284	7.226	782918	393473	4.937	3.290 #
36) L8 AR-1262-1	7.723f	6.778	584042	95996	4.879	2.692 #
37) L8 AR-1262-2	8.284	6.985	782918	152592	4.083	1.963 #
38) L8 AR-1262-3	8.607	0.000	719395	0	5.192	N.D. #
39) L8 AR-1262-4	8.675	7.575	379817	385135	6.103	3.368 #
40) L8 AR-1262-5	9.335	8.099	131874	34752	1.866	0.698 #
41) L9 AR-1268-1	8.607	0.000	719395	0	2.948	N.D. #

Data Path : Z:\pestpcbsrv\HPCHEM1\ECD\_P\Data\PP122222\  
 Data File : PP053942.D  
 Signal(s) : Signal #1: ECD1A.ch Signal #2: ECD2B.ch  
 Acq On : 22 Dec 2022 09:40  
 Operator : YP\AJ  
 Sample : AR1242CCC500  
 Misc :  
 ALS Vial : 4 Sample Multiplier: 1

Instrument :  
 ECD\_P  
 ClientSampleId :

Integration File signal 1: autoint1.e  
 Integration File signal 2: autoint2.e  
 Quant Time: Dec 22 13:52:41 2022  
 Quant Method : Z:\pestpcbsrv\HPCHEM1\ECD\_P\methods\PP121322.M  
 Quant Title : GC EXTRACTABLES  
 QLast Update : Wed Dec 14 05:38:40 2022  
 Response via : Initial Calibration  
 Integrator: ChemStation

Volume Inj. : 2 µl  
 Signal #1 Phase : ZB-MR1 Signal #2 Phase: ZB-MR2  
 Signal #1 Info : 30Mx0.32mmx 0.50µ Signal #2 Info : 30M x 0.32mm x 0.25µm

	Compound	RT#1	RT#2	Resp#1	Resp#2	ng/ml	ng/ml
42)	L9 AR-1268-2	8.675	7.575	379817	385135	1.671	2.257 #
43)	L9 AR-1268-3	8.919	7.784f	203701	127526	1.063	0.863
44)	L9 AR-1268-4	9.335	8.099	131874	34752	1.713	0.624 #
45)	L9 AR-1268-5	9.755	8.363	609823	361510	1.037	0.765 #

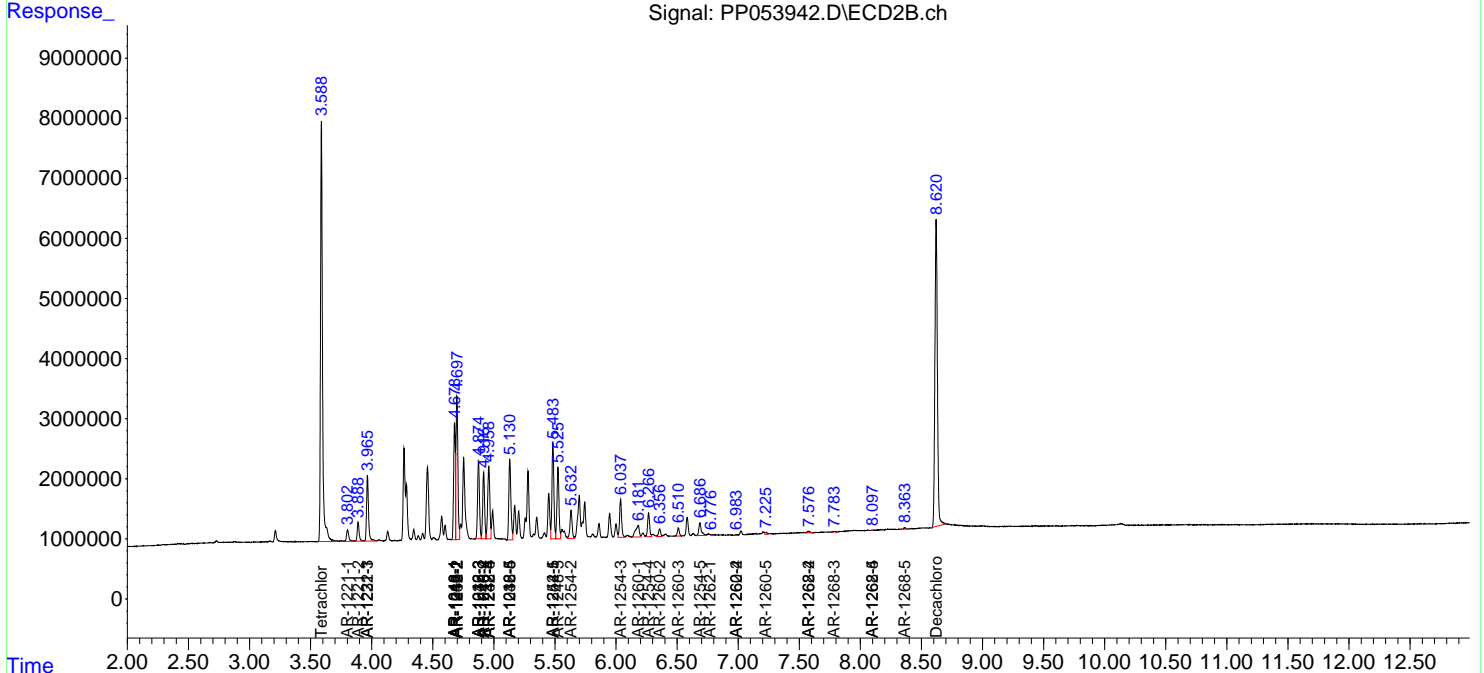
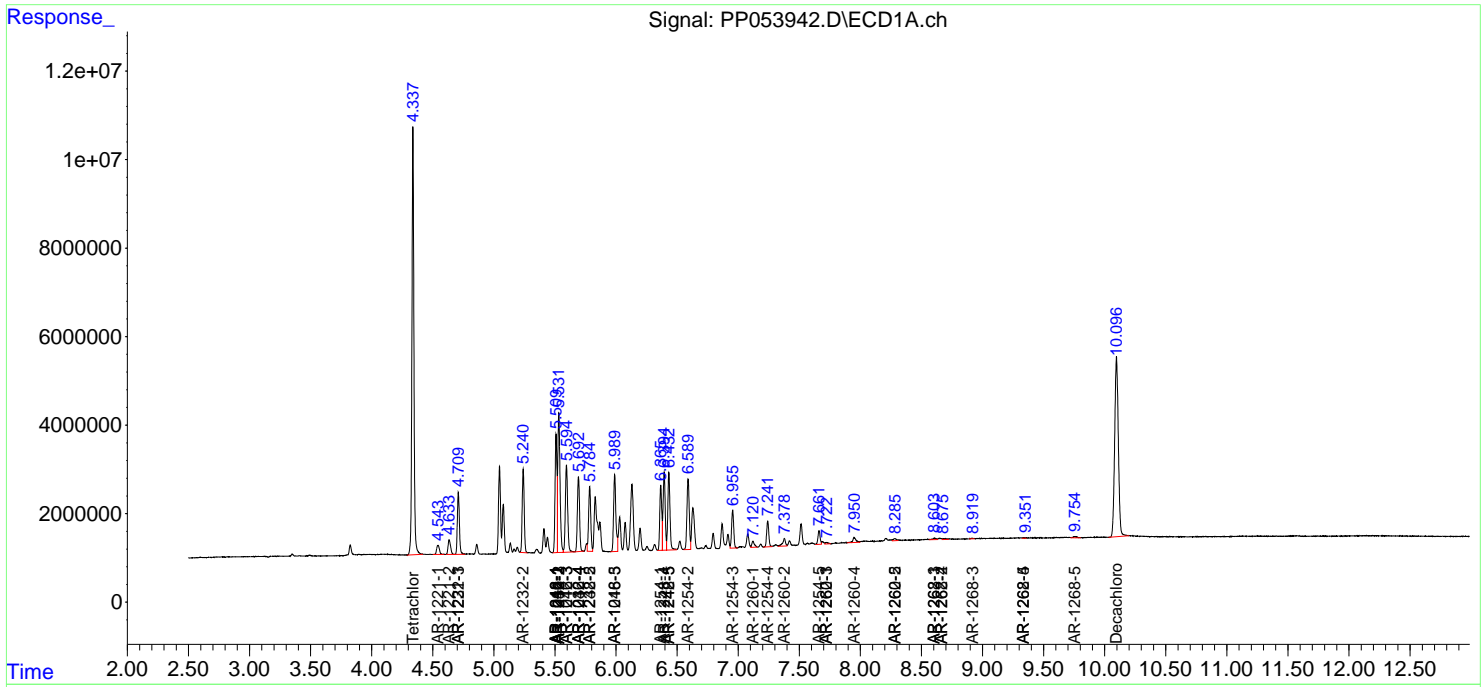
(f)=RT Delta > 1/2 Window (#)=Amounts differ by > 25% (m)=manual int.

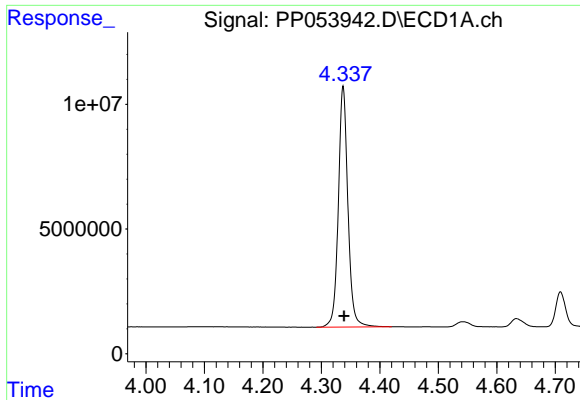
Data Path : Z:\pestpcbsrv\HPCHEM1\ECD\_P\Data\PP122222\  
 Data File : PP053942.D  
 Signal(s) : Signal #1: ECD1A.ch Signal #2: ECD2B.ch  
 Acq On : 22 Dec 2022 09:40  
 Operator : YP\AJ  
 Sample : AR1242CCC500  
 Misc :  
 ALS Vial : 4 Sample Multiplier: 1

Instrument :  
 ECD\_P  
 ClientSampleId :

Integration File signal 1: autoint1.e  
 Integration File signal 2: autoint2.e  
 Quant Time: Dec 22 13:52:41 2022  
 Quant Method : Z:\pestpcbsrv\HPCHEM1\ECD\_P\methods\PP121322.M  
 Quant Title : GC EXTRACTABLES  
 QLast Update : Wed Dec 14 05:38:40 2022  
 Response via : Initial Calibration  
 Integrator: ChemStation

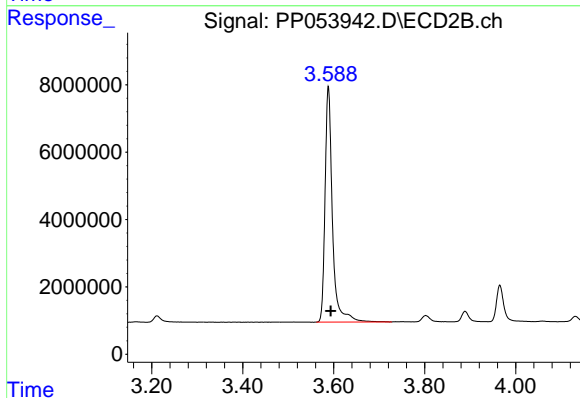
Volume Inj. : 2 µl  
 Signal #1 Phase : ZB-MR1 Signal #2 Phase: ZB-MR2  
 Signal #1 Info : 30Mx0.32mmx 0.50µ Signal #2 Info : 30M x 0.32mm x 0.25µm



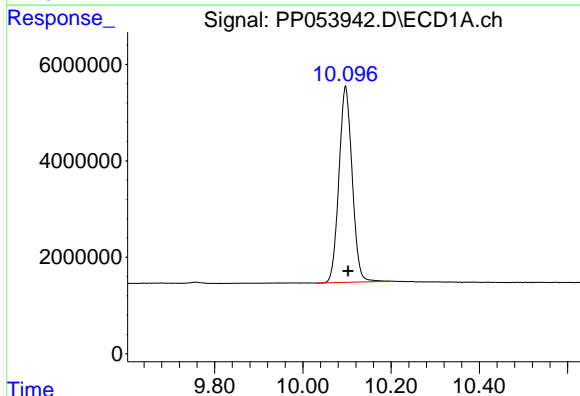


#1 Tetrachloro-m-xylene  
 R.T.: 4.337 min  
 Delta R.T.: -0.002 min  
 Response: 110011625  
 Conc: 52.39 ng/ml

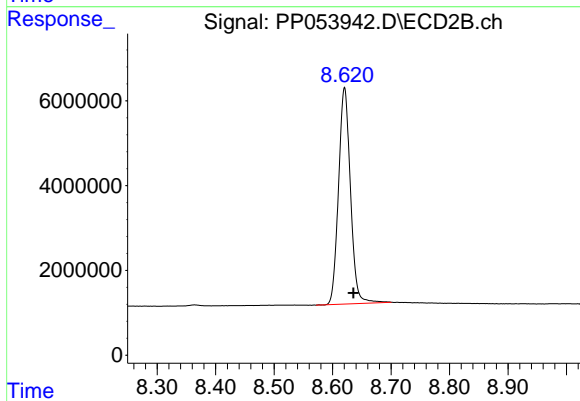
Instrument :  
 ECD\_P  
 ClientSampleId :



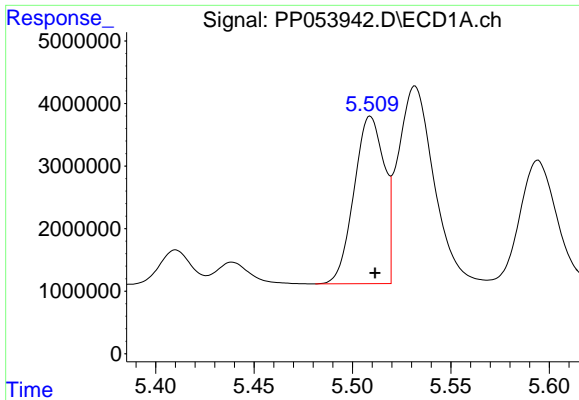
#1 Tetrachloro-m-xylene  
 R.T.: 3.588 min  
 Delta R.T.: -0.005 min  
 Response: 79191450  
 Conc: 50.71 ng/ml



#2 Decachlorobiphenyl  
 R.T.: 10.097 min  
 Delta R.T.: -0.005 min  
 Response: 84485899  
 Conc: 49.76 ng/ml



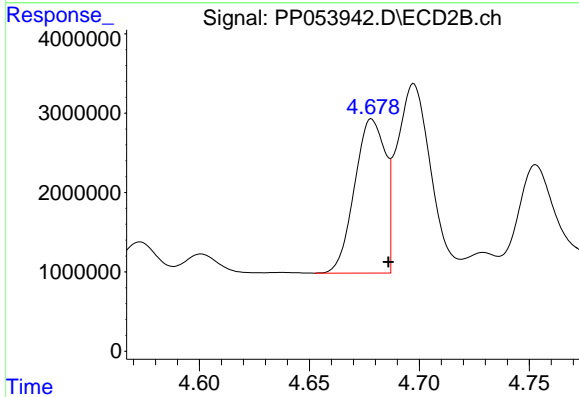
#2 Decachlorobiphenyl  
 R.T.: 8.621 min  
 Delta R.T.: -0.015 min  
 Response: 72404997  
 Conc: 51.84 ng/ml



#3 AR-1016-1

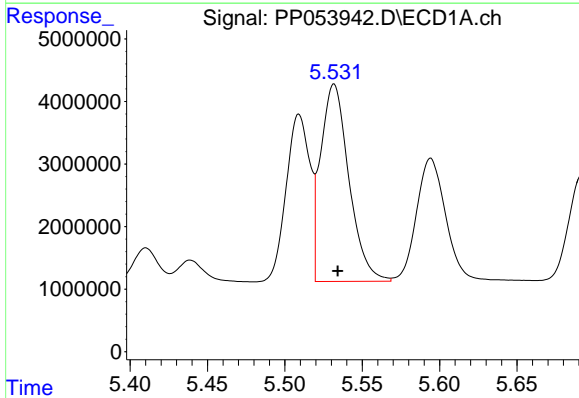
R.T.: 5.509 min  
 Delta R.T.: -0.002 min  
 Response: 28578760  
 Conc: 421.46 ng/ml

Instrument :  
 ECD\_P  
 ClientSampleId :



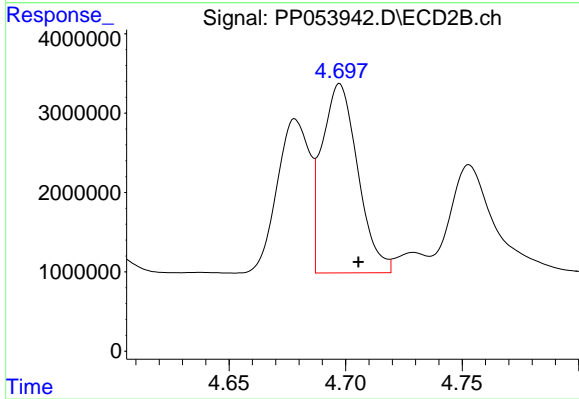
#3 AR-1016-1

R.T.: 4.678 min  
 Delta R.T.: -0.008 min  
 Response: 18833147  
 Conc: 410.07 ng/ml



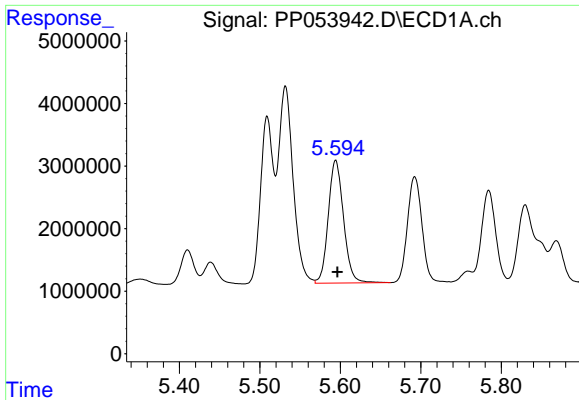
#4 AR-1016-2

R.T.: 5.532 min  
 Delta R.T.: -0.002 min  
 Response: 40173583  
 Conc: 403.31 ng/ml



#4 AR-1016-2

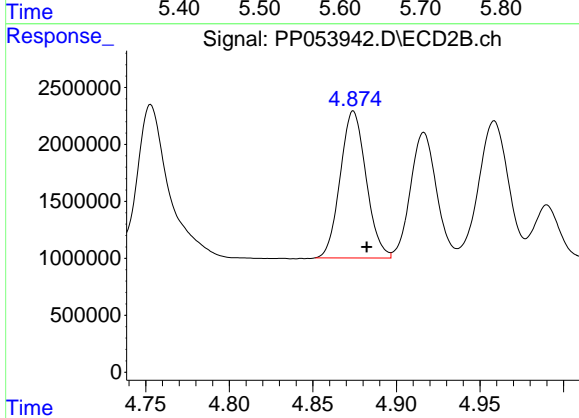
R.T.: 4.697 min  
 Delta R.T.: -0.008 min  
 Response: 25552165  
 Conc: 407.80 ng/ml



#5 AR-1016-3

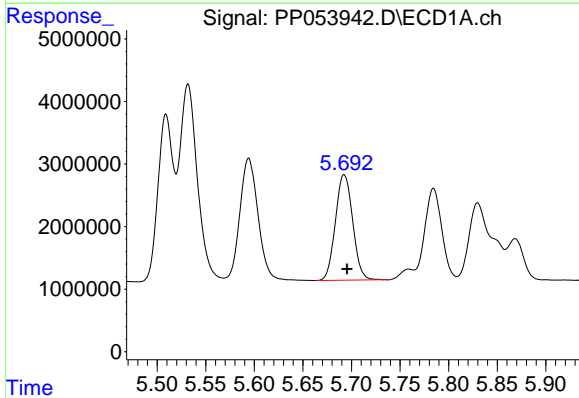
R.T.: 5.594 min  
 Delta R.T.: -0.002 min  
 Response: 25833246  
 Conc: 408.75 ng/ml

Instrument :  
 ECD\_P  
 ClientSampleId :



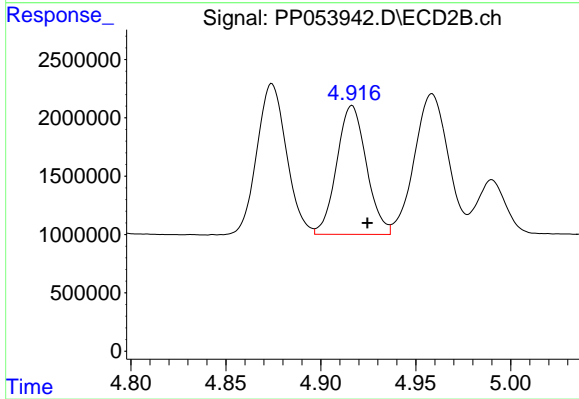
#5 AR-1016-3

R.T.: 4.874 min  
 Delta R.T.: -0.008 min  
 Response: 13914013  
 Conc: 409.94 ng/ml



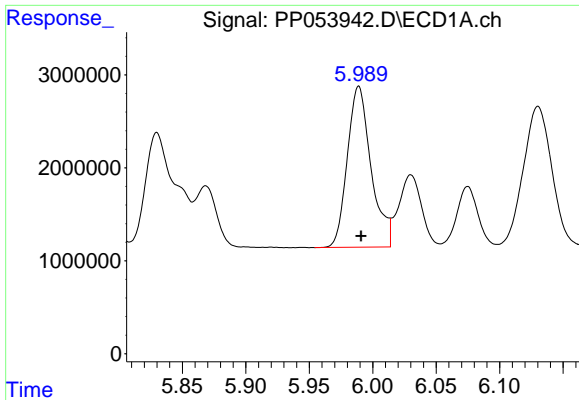
#6 AR-1016-4

R.T.: 5.692 min  
 Delta R.T.: -0.003 min  
 Response: 20837973  
 Conc: 420.52 ng/ml



#6 AR-1016-4

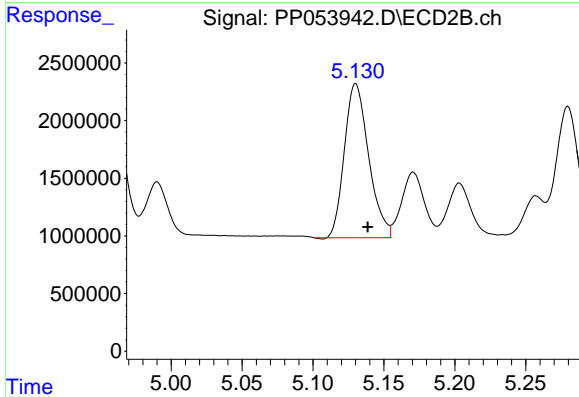
R.T.: 4.916 min  
 Delta R.T.: -0.008 min  
 Response: 11998839  
 Conc: 402.66 ng/ml



#7 AR-1016-5

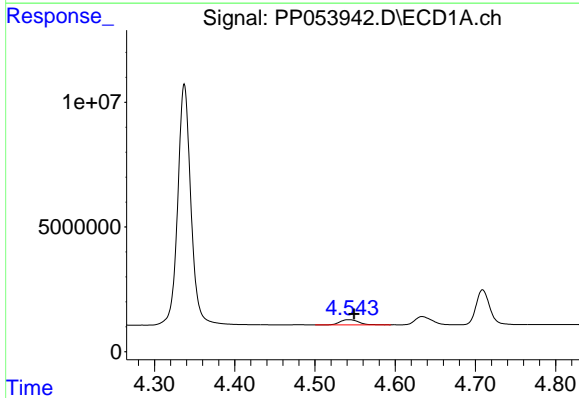
R.T.: 5.989 min  
 Delta R.T.: -0.002 min  
 Response: 22560800  
 Conc: 428.62 ng/ml

Instrument :  
 ECD\_P  
 ClientSampleId :



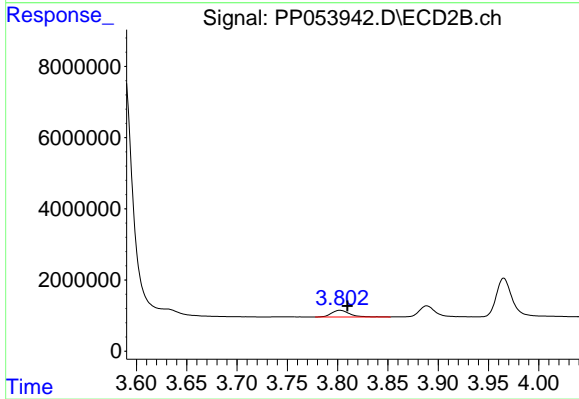
#7 AR-1016-5

R.T.: 5.130 min  
 Delta R.T.: -0.008 min  
 Response: 15916869  
 Conc: 438.95 ng/ml



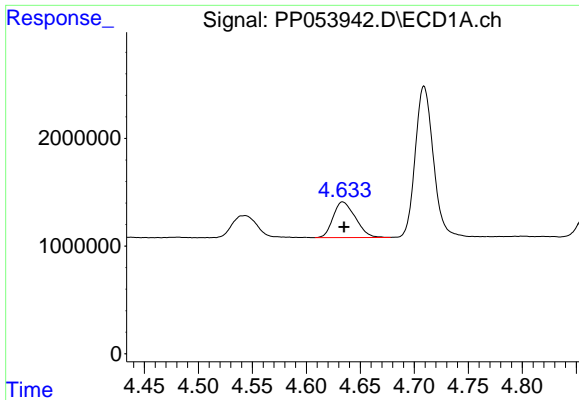
#8 AR-1221-1

R.T.: 4.543 min  
 Delta R.T.: -0.006 min  
 Response: 3305182  
 Conc: 128.30 ng/ml



#8 AR-1221-1

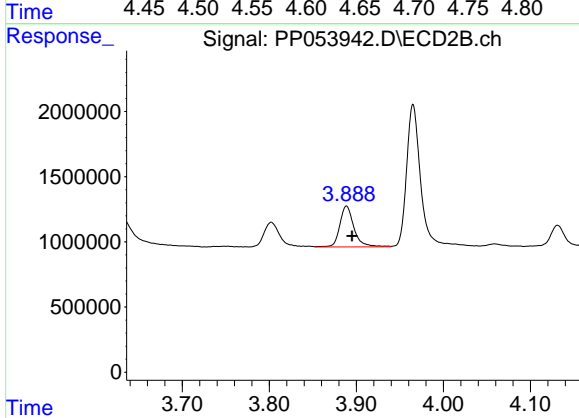
R.T.: 3.802 min  
 Delta R.T.: -0.007 min  
 Response: 2423450  
 Conc: 125.16 ng/ml



#9 AR-1221-2

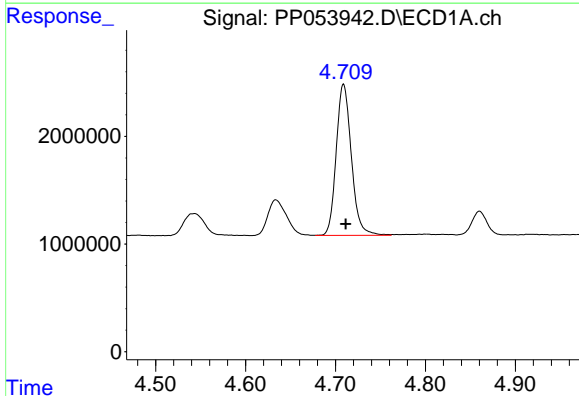
R.T.: 4.634 min  
 Delta R.T.: -0.001 min  
 Response: 4750573  
 Conc: 244.01 ng/ml

Instrument :  
 ECD\_P  
 ClientSampleId :



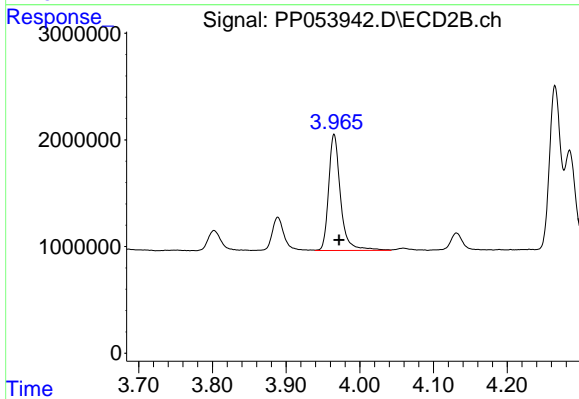
#9 AR-1221-2

R.T.: 3.889 min  
 Delta R.T.: -0.006 min  
 Response: 3557606  
 Conc: 243.38 ng/ml



#10 AR-1221-3

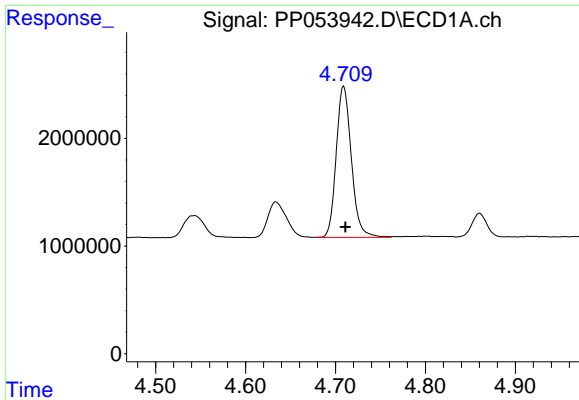
R.T.: 4.709 min  
 Delta R.T.: -0.002 min  
 Response: 16450581  
 Conc: 283.07 ng/ml



#10 AR-1221-3

R.T.: 3.965 min  
 Delta R.T.: -0.007 min  
 Response: 12234070  
 Conc: 275.04 ng/ml

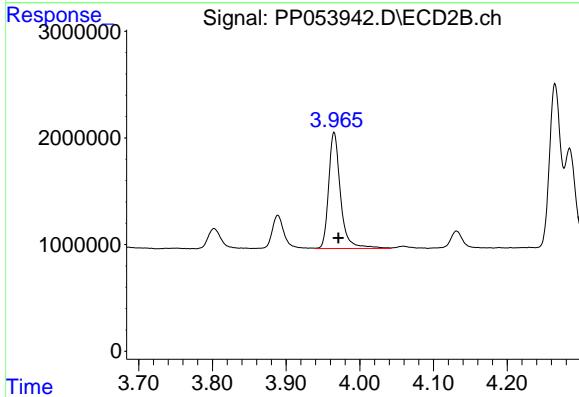




#11 AR-1232-1

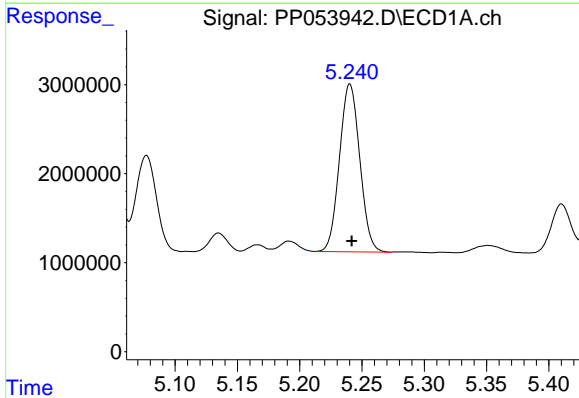
R.T.: 4.709 min  
 Delta R.T.: -0.002 min  
 Response: 16450581  
 Conc: 367.29 ng/ml

Instrument :  
 ECD\_P  
 ClientSampleId :



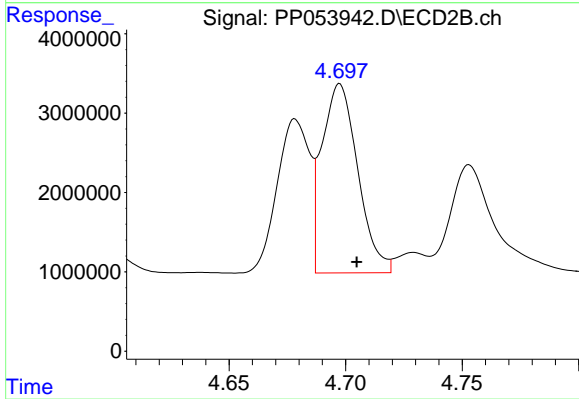
#11 AR-1232-1

R.T.: 3.965 min  
 Delta R.T.: -0.006 min  
 Response: 12234070  
 Conc: 355.52 ng/ml



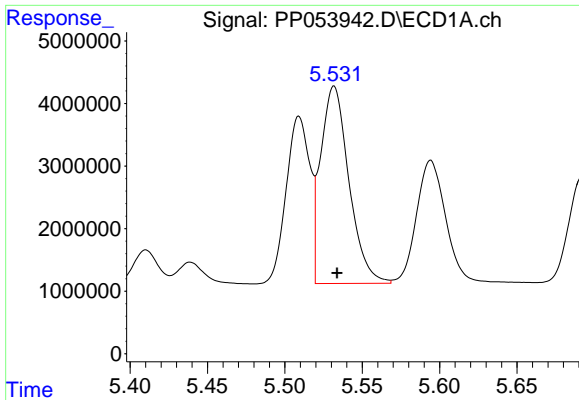
#12 AR-1232-2

R.T.: 5.240 min  
 Delta R.T.: -0.002 min  
 Response: 21424896  
 Conc: 832.89 ng/ml



#12 AR-1232-2

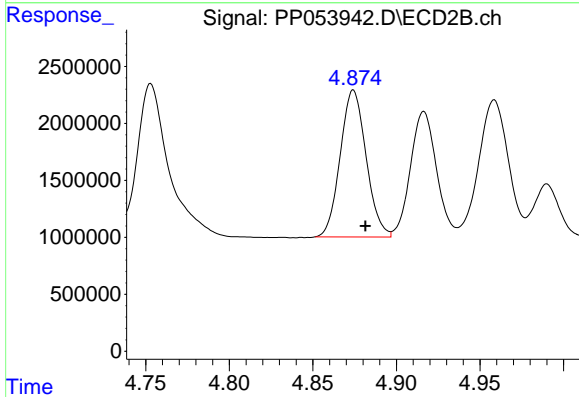
R.T.: 4.697 min  
 Delta R.T.: -0.007 min  
 Response: 25552165  
 Conc: 856.13 ng/ml



#13 AR-1232-3

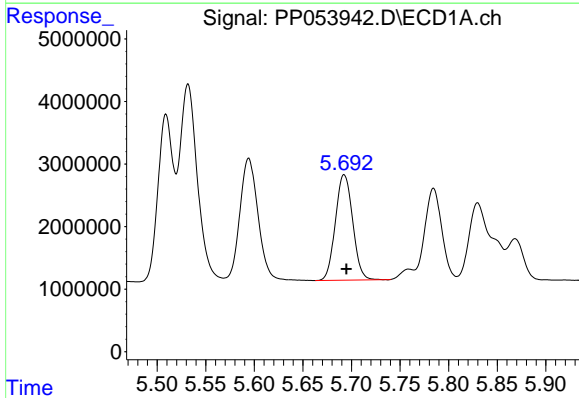
R.T.: 5.532 min  
 Delta R.T.: -0.002 min  
 Response: 40173583  
 Conc: 855.91 ng/ml

Instrument :  
 ECD\_P  
 ClientSampleId :



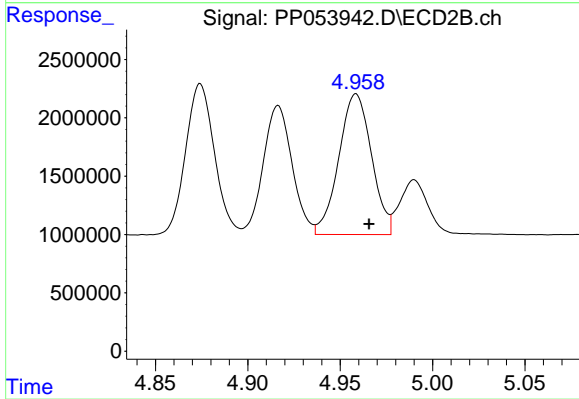
#13 AR-1232-3

R.T.: 4.874 min  
 Delta R.T.: -0.007 min  
 Response: 13914013  
 Conc: 878.21 ng/ml



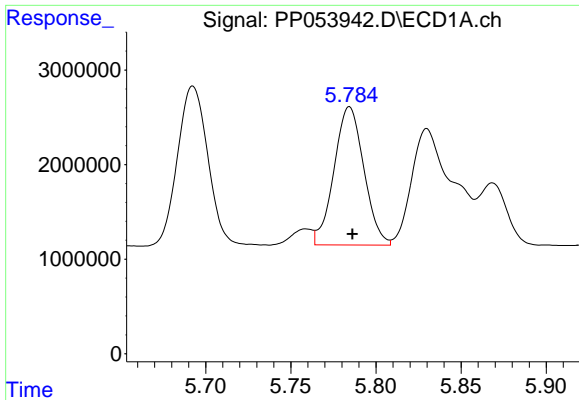
#14 AR-1232-4

R.T.: 5.692 min  
 Delta R.T.: -0.002 min  
 Response: 20837973  
 Conc: 879.46 ng/ml



#14 AR-1232-4

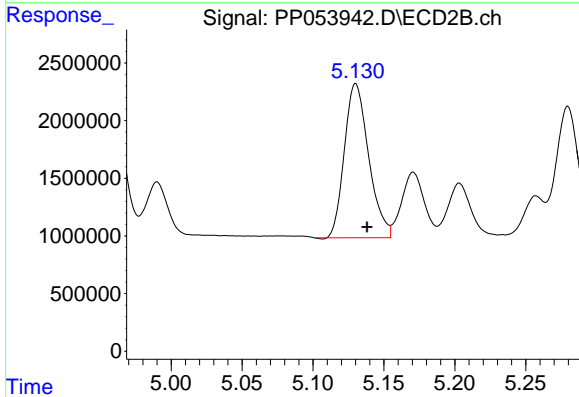
R.T.: 4.959 min  
 Delta R.T.: -0.007 min  
 Response: 14872181  
 Conc: 962.44 ng/ml



#15 AR-1232-5

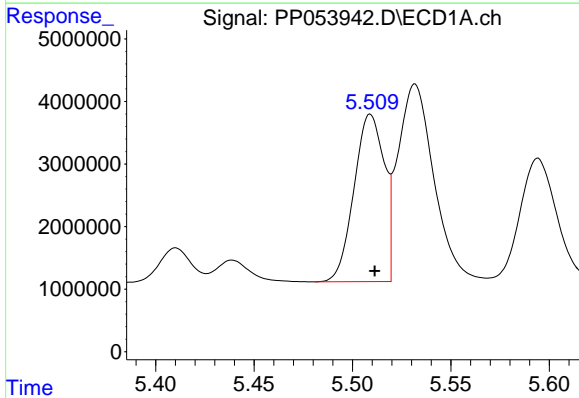
R.T.: 5.784 min  
 Delta R.T.: -0.002 min  
 Response: 17853716  
 Conc: 968.07 ng/ml

Instrument :  
 ECD\_P  
 ClientSampleId :



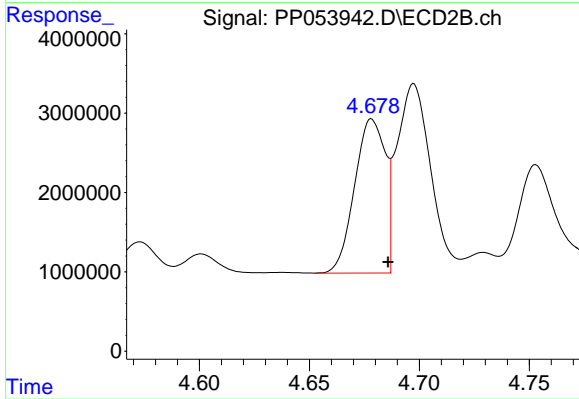
#15 AR-1232-5

R.T.: 5.130 min  
 Delta R.T.: -0.008 min  
 Response: 15916869  
 Conc: 966.59 ng/ml



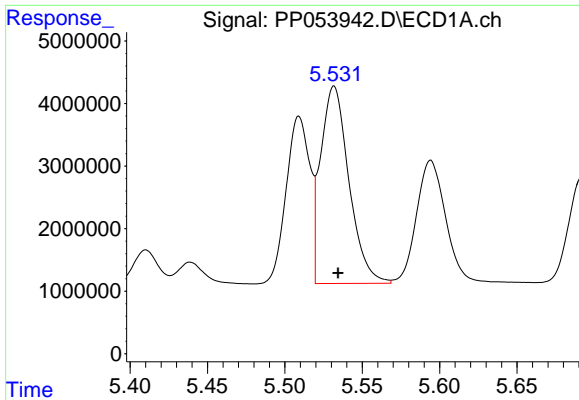
#16 AR-1242-1

R.T.: 5.509 min  
 Delta R.T.: -0.002 min  
 Response: 28578760  
 Conc: 545.60 ng/ml



#16 AR-1242-1

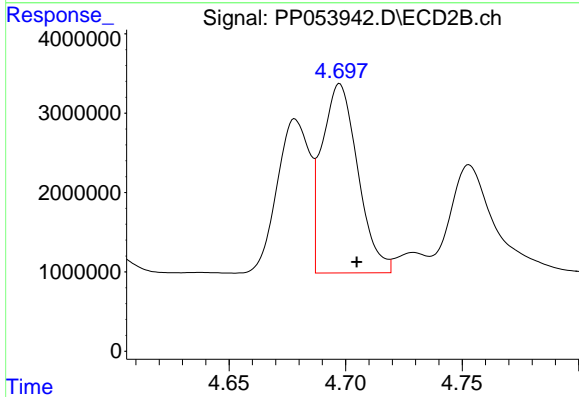
R.T.: 4.678 min  
 Delta R.T.: -0.007 min  
 Response: 18833147  
 Conc: 531.81 ng/ml



#17 AR-1242-2

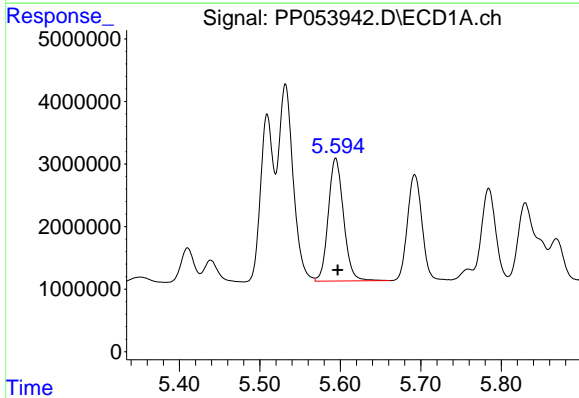
R.T.: 5.532 min  
 Delta R.T.: -0.003 min  
 Response: 40173583  
 Conc: 527.27 ng/ml

Instrument :  
 ECD\_P  
 ClientSampleId :



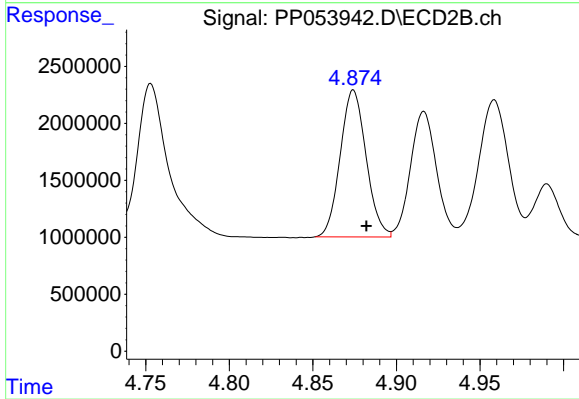
#17 AR-1242-2

R.T.: 4.697 min  
 Delta R.T.: -0.007 min  
 Response: 25552165  
 Conc: 531.87 ng/ml



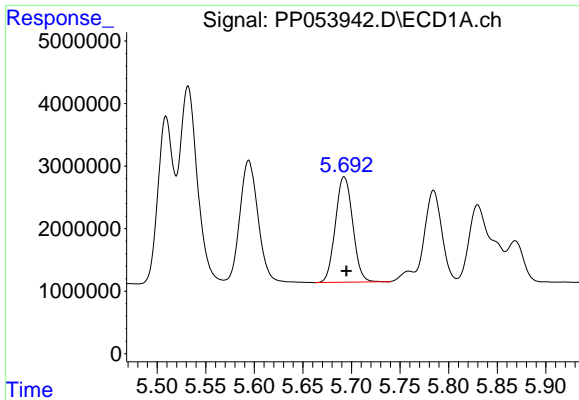
#18 AR-1242-3

R.T.: 5.594 min  
 Delta R.T.: -0.003 min  
 Response: 25833246  
 Conc: 527.26 ng/ml



#18 AR-1242-3

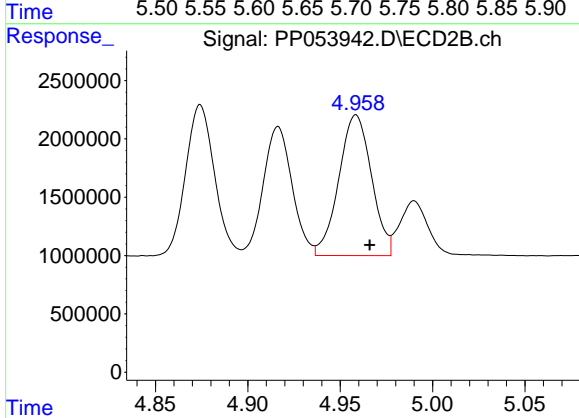
R.T.: 4.874 min  
 Delta R.T.: -0.008 min  
 Response: 13914013  
 Conc: 533.70 ng/ml



#19 AR-1242-4

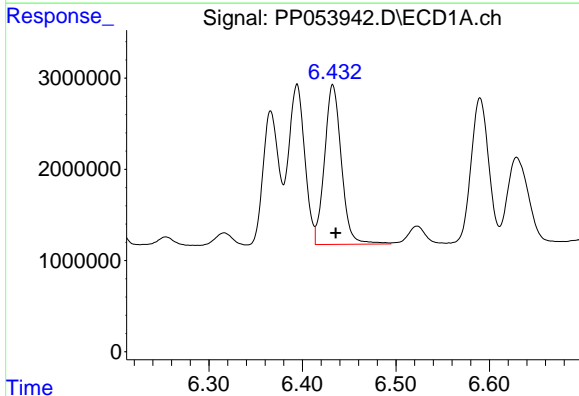
R.T.: 5.692 min  
 Delta R.T.: -0.002 min  
 Response: 20837973  
 Conc: 542.81 ng/ml

Instrument :  
 ECD\_P  
 ClientSampleId :



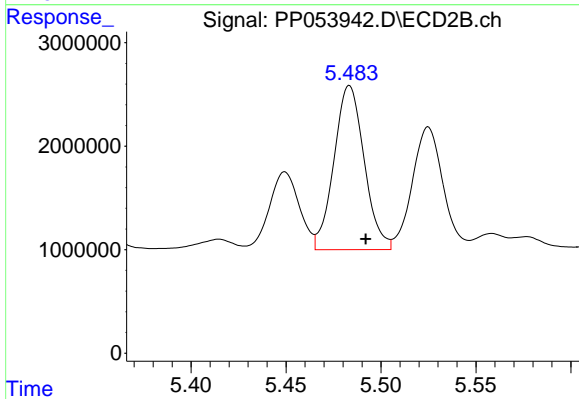
#19 AR-1242-4

R.T.: 4.959 min  
 Delta R.T.: -0.007 min  
 Response: 14872181  
 Conc: 521.31 ng/ml



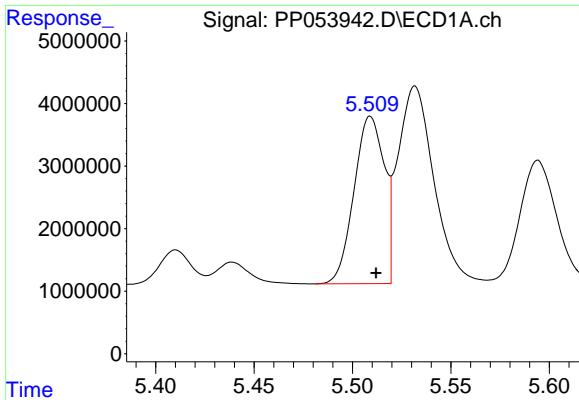
#20 AR-1242-5

R.T.: 6.433 min  
 Delta R.T.: -0.003 min  
 Response: 21897640  
 Conc: 536.89 ng/ml



#20 AR-1242-5

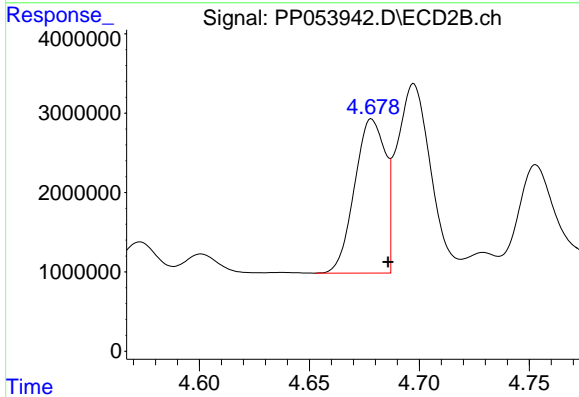
R.T.: 5.483 min  
 Delta R.T.: -0.009 min  
 Response: 17605828  
 Conc: 576.80 ng/ml



#21 AR-1248-1

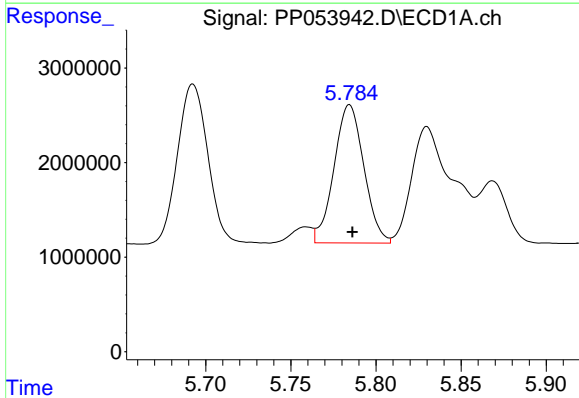
R.T.: 5.509 min  
 Delta R.T.: -0.003 min  
 Response: 28578760  
 Conc: 678.09 ng/ml

Instrument :  
 ECD\_P  
 ClientSampleId :



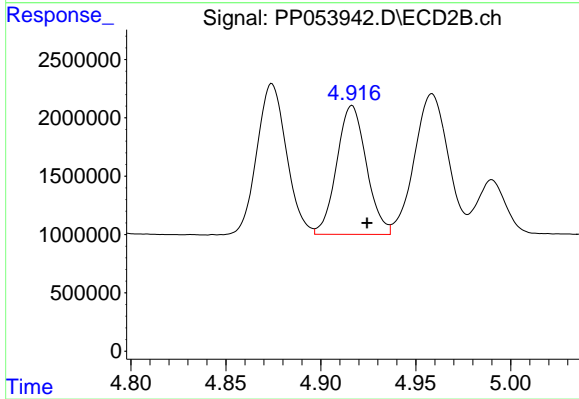
#21 AR-1248-1

R.T.: 4.678 min  
 Delta R.T.: -0.007 min  
 Response: 18833147  
 Conc: 662.03 ng/ml



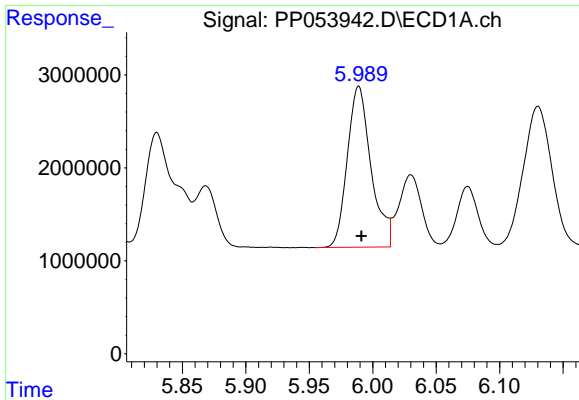
#22 AR-1248-2

R.T.: 5.784 min  
 Delta R.T.: -0.002 min  
 Response: 17853716  
 Conc: 282.49 ng/ml



#22 AR-1248-2

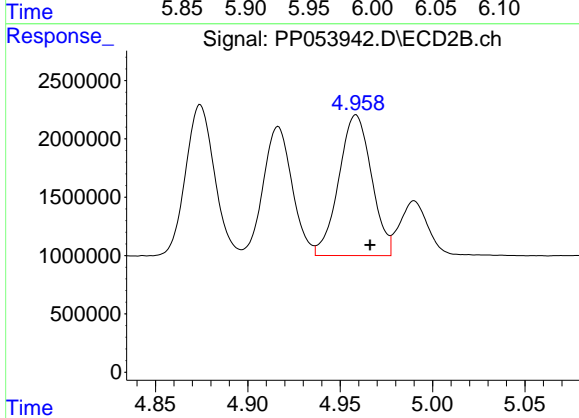
R.T.: 4.916 min  
 Delta R.T.: -0.008 min  
 Response: 11998839  
 Conc: 290.05 ng/ml



#23 AR-1248-3

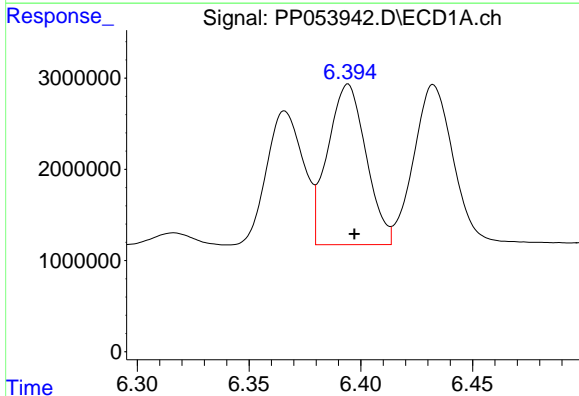
R.T.: 5.989 min  
 Delta R.T.: -0.002 min  
 Response: 22560800  
 Conc: 322.09 ng/ml

Instrument :  
 ECD\_P  
 ClientSampleId :



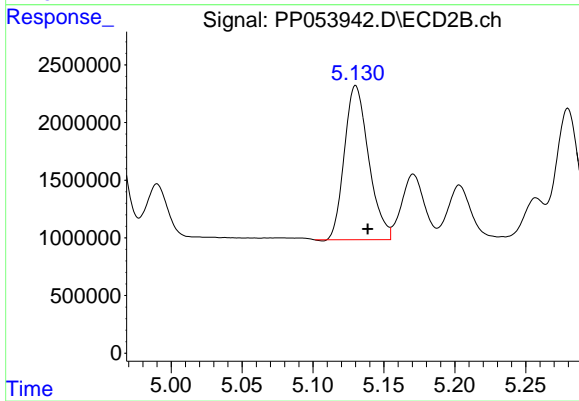
#23 AR-1248-3

R.T.: 4.959 min  
 Delta R.T.: -0.008 min  
 Response: 14872181  
 Conc: 354.12 ng/ml



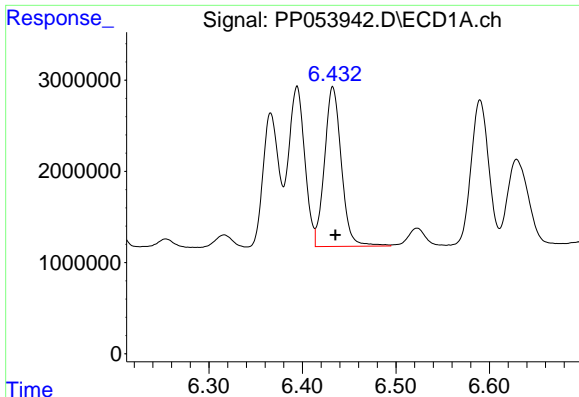
#24 AR-1248-4

R.T.: 6.394 min  
 Delta R.T.: -0.003 min  
 Response: 21023066  
 Conc: 298.09 ng/ml



#24 AR-1248-4

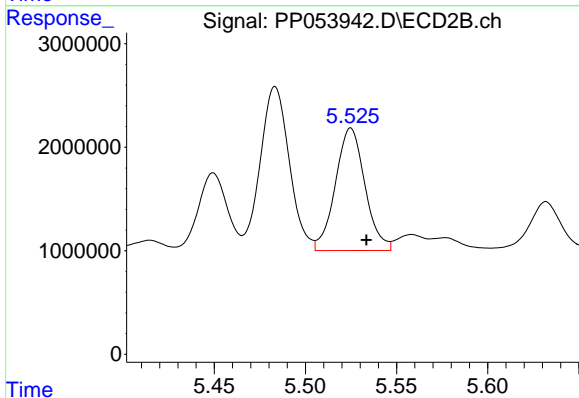
R.T.: 5.130 min  
 Delta R.T.: -0.008 min  
 Response: 15916869  
 Conc: 330.81 ng/ml



#25 AR-1248-5

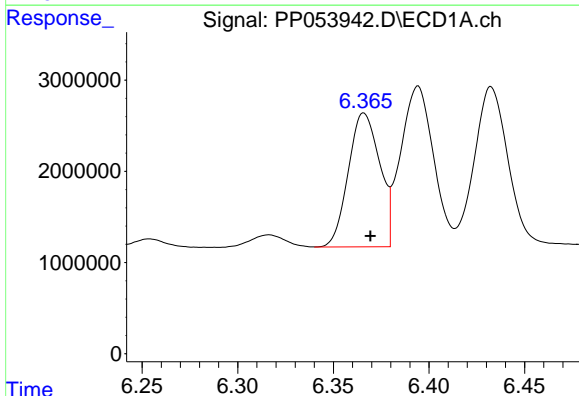
R.T.: 6.433 min  
 Delta R.T.: -0.003 min  
 Response: 21897640  
 Conc: 310.75 ng/ml

Instrument :  
 ECD\_P  
 ClientSampleId :



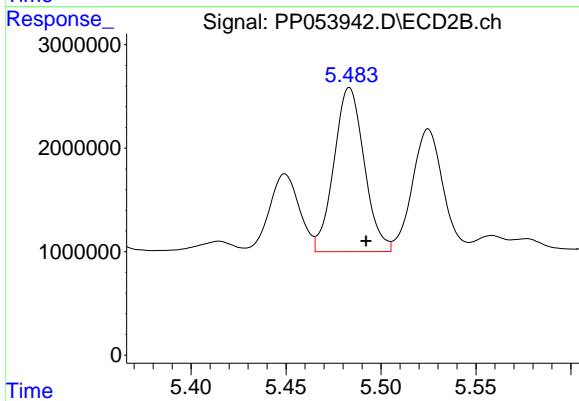
#25 AR-1248-5

R.T.: 5.525 min  
 Delta R.T.: -0.008 min  
 Response: 13399450  
 Conc: 356.85 ng/ml



#26 AR-1254-1

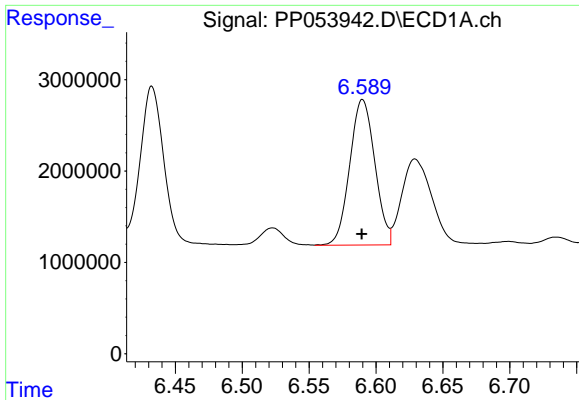
R.T.: 6.366 min  
 Delta R.T.: -0.003 min  
 Response: 16775990  
 Conc: 216.49 ng/ml



#26 AR-1254-1

R.T.: 5.483 min  
 Delta R.T.: -0.009 min  
 Response: 17605828  
 Conc: 268.86 ng/ml

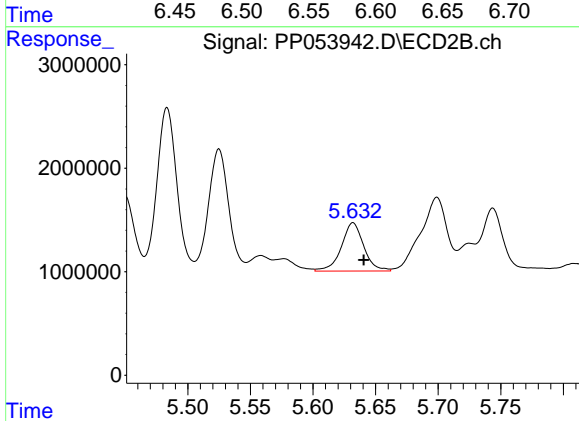




#27 AR-1254-2

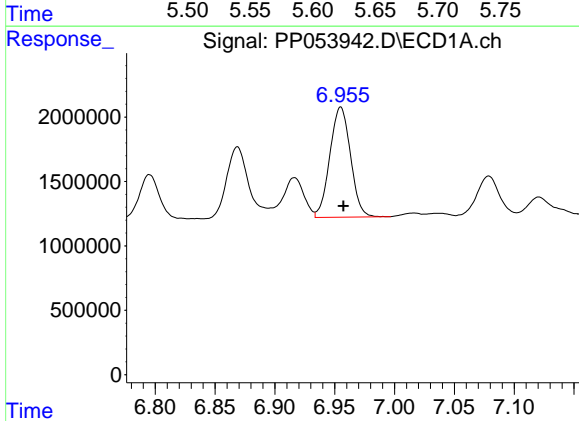
R.T.: 6.590 min  
 Delta R.T.: 0.000 min  
 Response: 20769077  
 Conc: 178.51 ng/ml

Instrument :  
 ECD\_P  
 ClientSampleId :



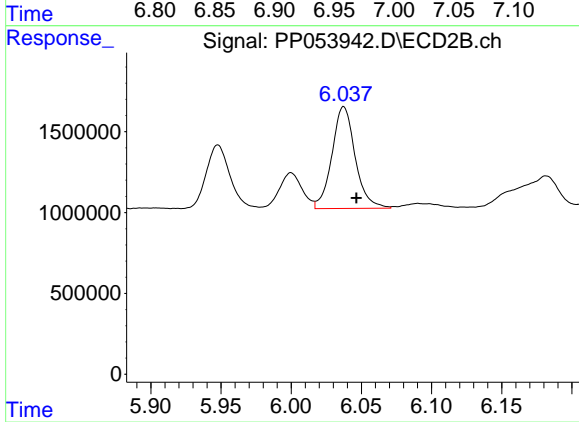
#27 AR-1254-2

R.T.: 5.632 min  
 Delta R.T.: -0.008 min  
 Response: 5817035  
 Conc: 99.74 ng/ml



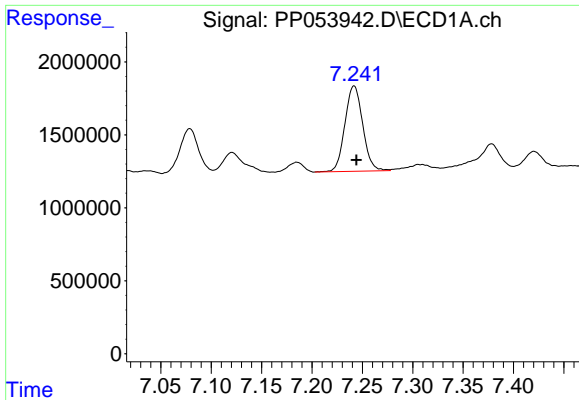
#28 AR-1254-3

R.T.: 6.955 min  
 Delta R.T.: -0.002 min  
 Response: 10302083  
 Conc: 87.96 ng/ml



#28 AR-1254-3

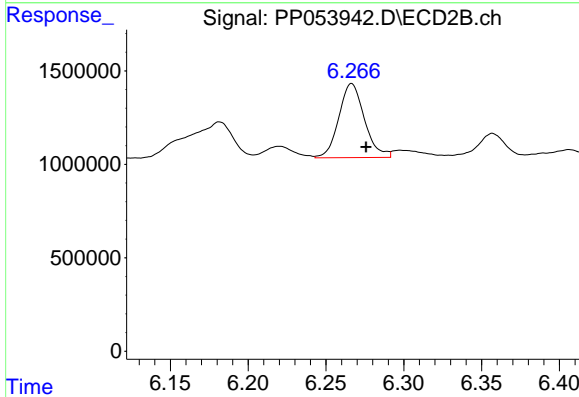
R.T.: 6.037 min  
 Delta R.T.: -0.009 min  
 Response: 7269707  
 Conc: 82.64 ng/ml



#29 AR-1254-4

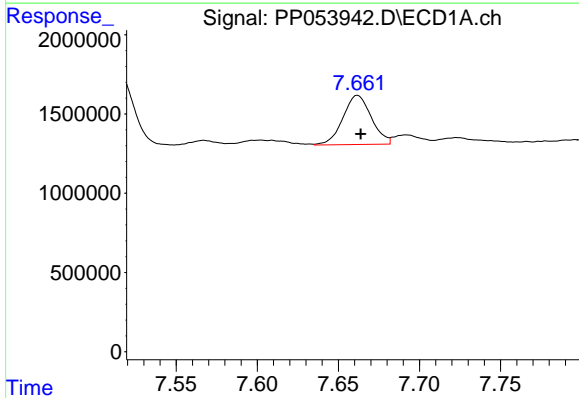
R.T.: 7.242 min  
 Delta R.T.: -0.002 min  
 Response: 7196149  
 Conc: 90.77 ng/ml

Instrument :  
 ECD\_P  
 ClientSampleId :



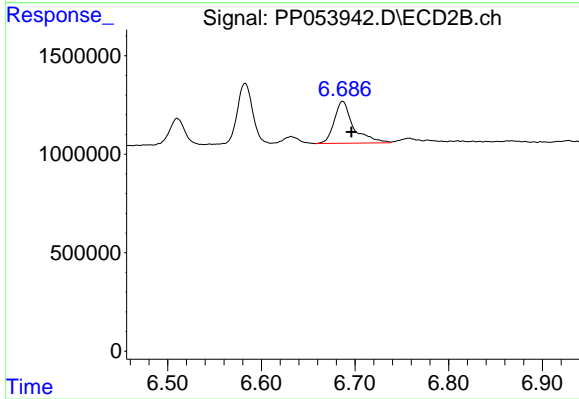
#29 AR-1254-4

R.T.: 6.267 min  
 Delta R.T.: -0.009 min  
 Response: 4541678  
 Conc: 99.13 ng/ml



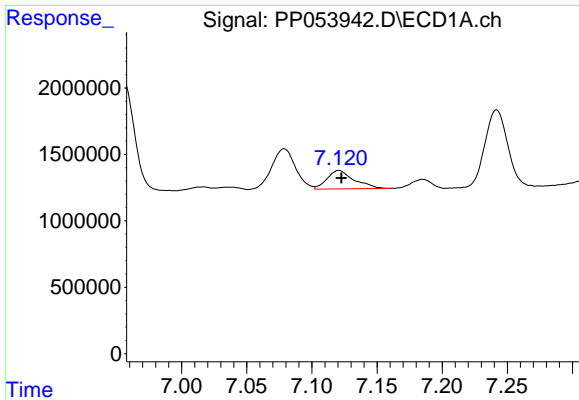
#30 AR-1254-5

R.T.: 7.662 min  
 Delta R.T.: -0.002 min  
 Response: 3795221  
 Conc: 38.92 ng/ml



#30 AR-1254-5

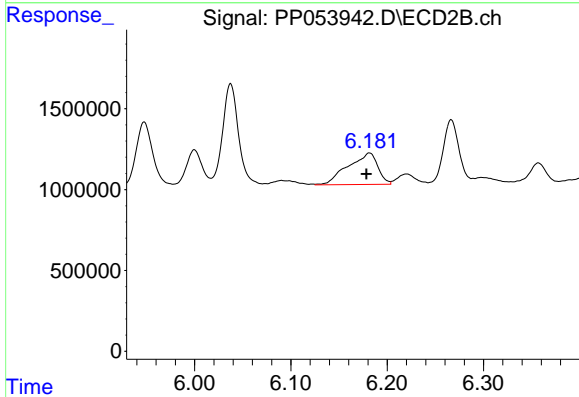
R.T.: 6.687 min  
 Delta R.T.: -0.009 min  
 Response: 3034599  
 Conc: 38.94 ng/ml



#31 AR-1260-1

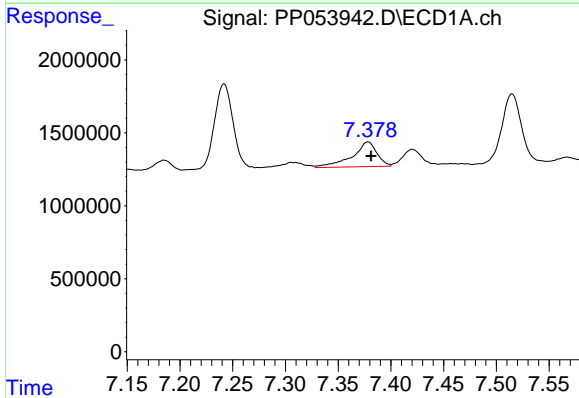
R.T.: 7.121 min  
 Delta R.T.: -0.002 min  
 Response: 2012821  
 Conc: 20.84 ng/ml

Instrument :  
 ECD\_P  
 ClientSampleId :



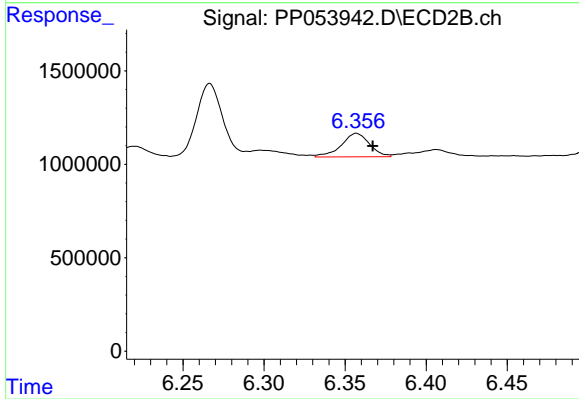
#31 AR-1260-1

R.T.: 6.182 min  
 Delta R.T.: 0.003 min  
 Response: 4168616  
 Conc: 63.91 ng/ml



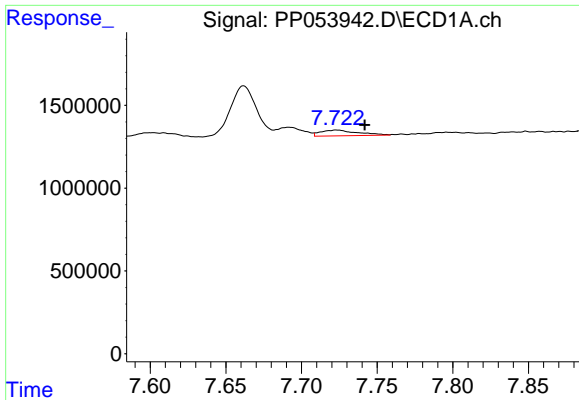
#32 AR-1260-2

R.T.: 7.378 min  
 Delta R.T.: -0.003 min  
 Response: 2753949  
 Conc: 24.93 ng/ml



#32 AR-1260-2

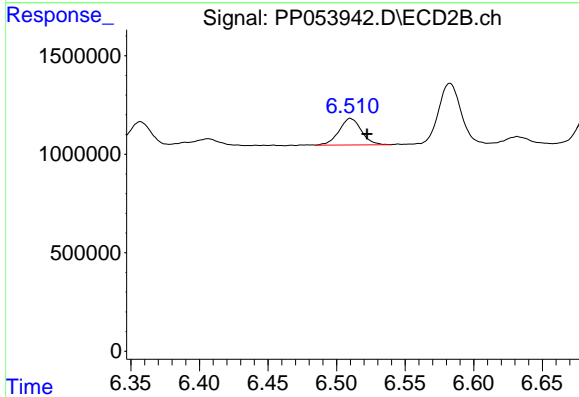
R.T.: 6.357 min  
 Delta R.T.: -0.010 min  
 Response: 1523764  
 Conc: 20.23 ng/ml



#33 AR-1260-3

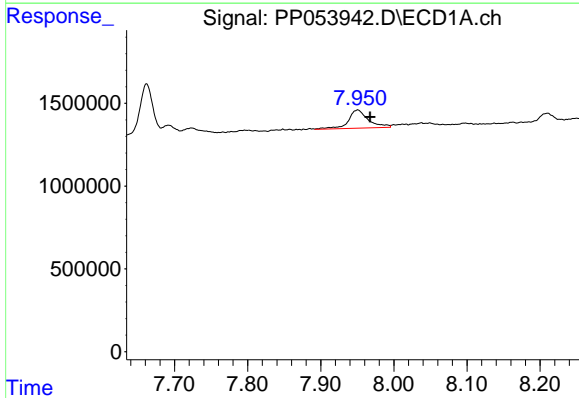
R.T.: 7.723 min  
 Delta R.T.: -0.018 min  
 Response: 584042  
 Conc: 7.72 ng/ml

Instrument :  
 ECD\_P  
 ClientSampleId :



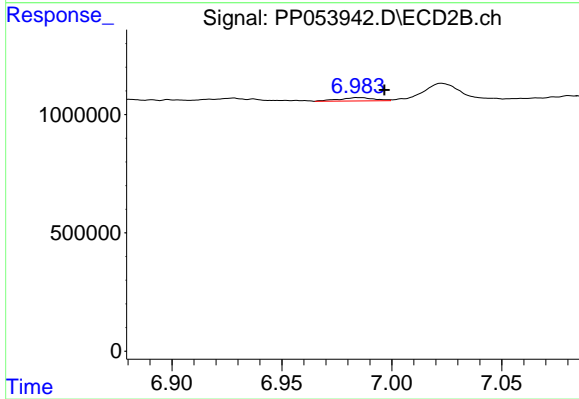
#33 AR-1260-3

R.T.: 6.510 min  
 Delta R.T.: -0.012 min  
 Response: 1530854  
 Conc: 21.12 ng/ml



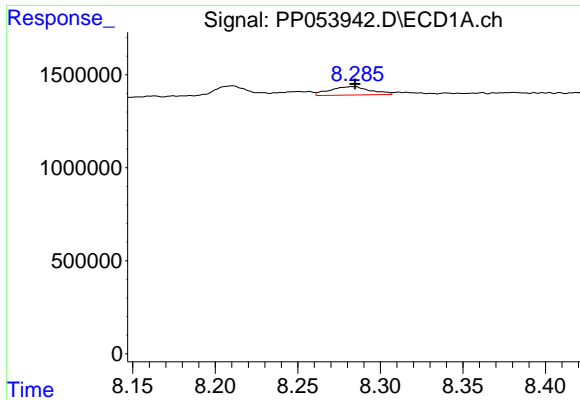
#34 AR-1260-4

R.T.: 7.951 min  
 Delta R.T.: -0.017 min  
 Response: 2097034  
 Conc: 22.34 ng/ml



#34 AR-1260-4

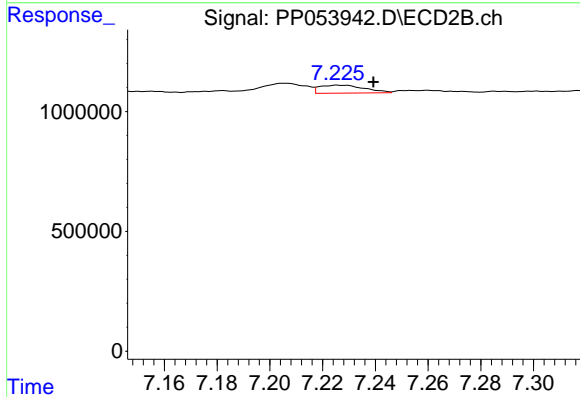
R.T.: 6.985 min  
 Delta R.T.: -0.012 min  
 Response: 152592  
 Conc: 2.81 ng/ml



#35 AR-1260-5

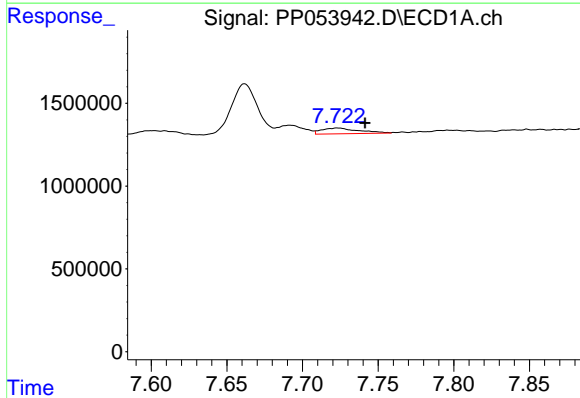
R.T.: 8.284 min  
 Delta R.T.: 0.000 min  
 Response: 782918  
 Conc: 4.94 ng/ml

Instrument :  
 ECD\_P  
 ClientSampleId :



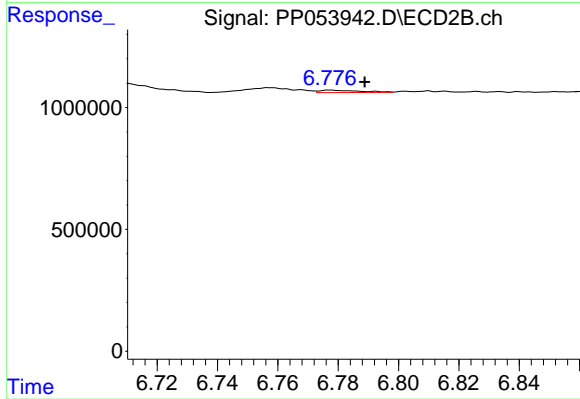
#35 AR-1260-5

R.T.: 7.226 min  
 Delta R.T.: -0.013 min  
 Response: 393473  
 Conc: 3.29 ng/ml



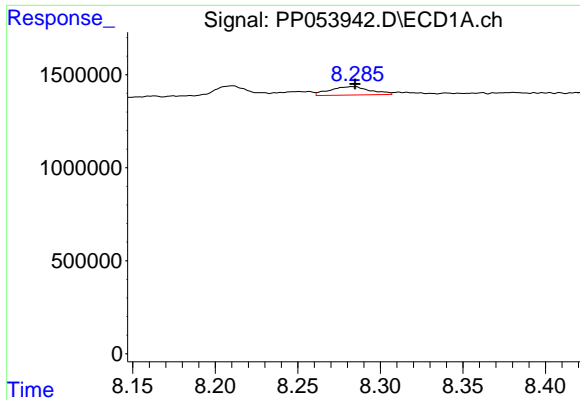
#36 AR-1262-1

R.T.: 7.723 min  
 Delta R.T.: -0.018 min  
 Response: 584042  
 Conc: 4.88 ng/ml



#36 AR-1262-1

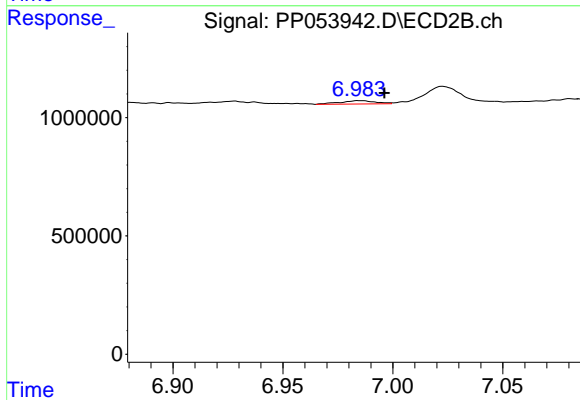
R.T.: 6.778 min  
 Delta R.T.: -0.011 min  
 Response: 95996  
 Conc: 2.69 ng/ml



#37 AR-1262-2

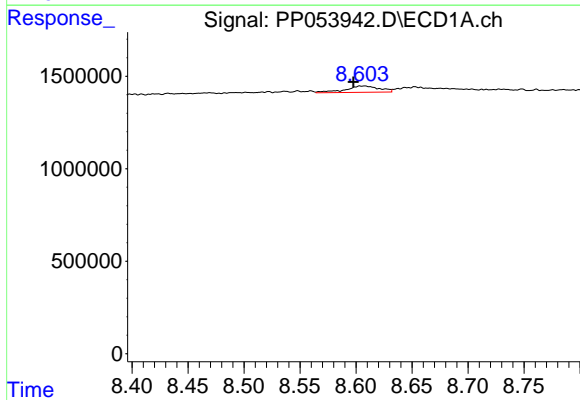
R.T.: 8.284 min  
 Delta R.T.: 0.000 min  
 Response: 782918  
 Conc: 4.08 ng/ml

Instrument :  
 ECD\_P  
 ClientSampleId :



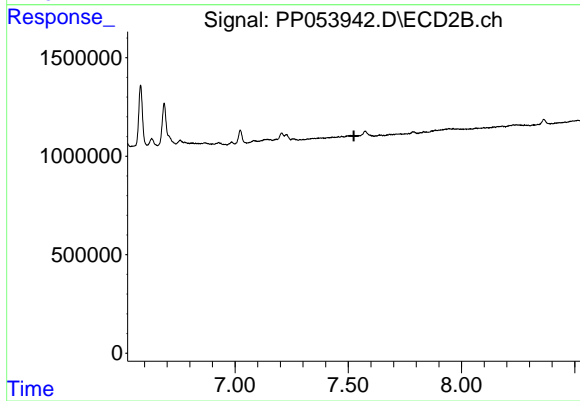
#37 AR-1262-2

R.T.: 6.985 min  
 Delta R.T.: -0.011 min  
 Response: 152592  
 Conc: 1.96 ng/ml



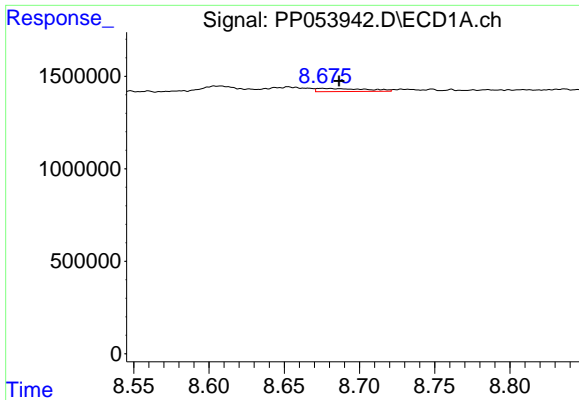
#38 AR-1262-3

R.T.: 8.607 min  
 Delta R.T.: 0.010 min  
 Response: 719395  
 Conc: 5.19 ng/ml



#38 AR-1262-3

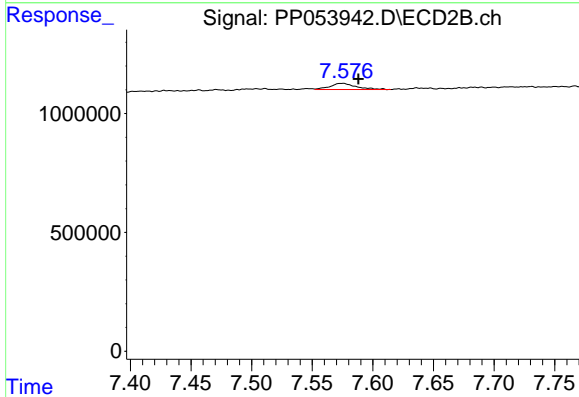
R.T.: 0.000 min  
 Exp R.T.: 7.525 min  
 Response: 0  
 Conc: N.D.



#39 AR-1262-4

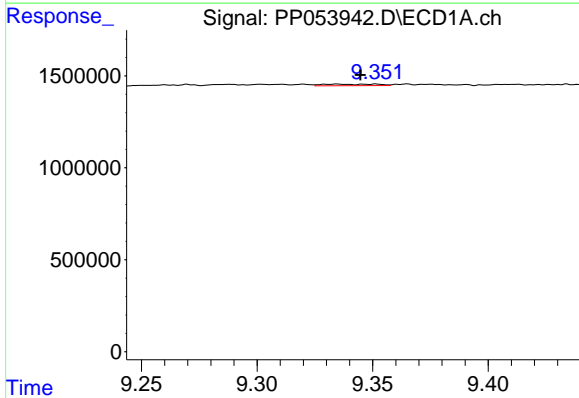
R.T.: 8.675 min  
 Delta R.T.: -0.011 min  
 Response: 379817  
 Conc: 6.10 ng/ml

Instrument :  
 ECD\_P  
 ClientSampleId :



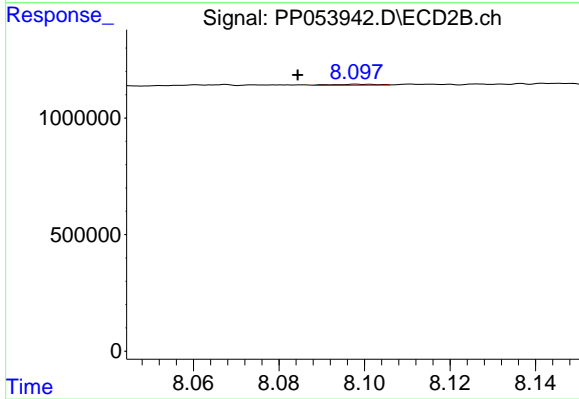
#39 AR-1262-4

R.T.: 7.575 min  
 Delta R.T.: -0.013 min  
 Response: 385135  
 Conc: 3.37 ng/ml



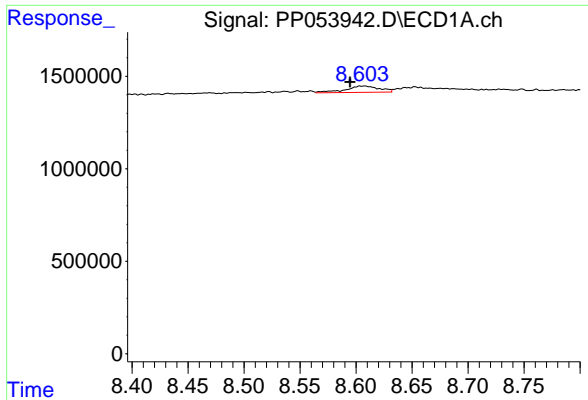
#40 AR-1262-5

R.T.: 9.335 min  
 Delta R.T.: -0.010 min  
 Response: 131874  
 Conc: 1.87 ng/ml



#40 AR-1262-5

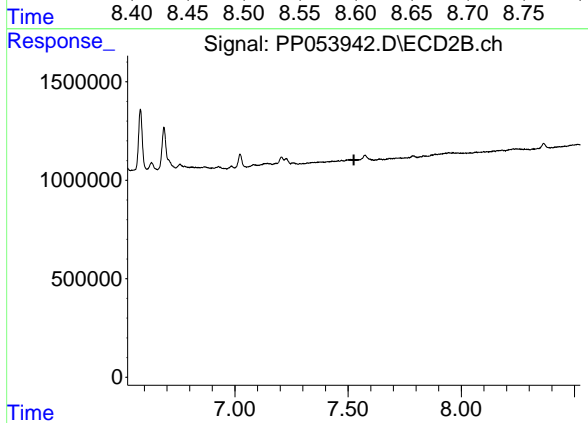
R.T.: 8.099 min  
 Delta R.T.: 0.014 min  
 Response: 34752  
 Conc: 0.70 ng/ml



#41 AR-1268-1

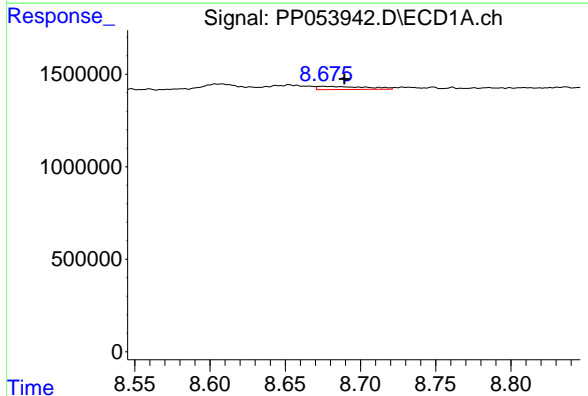
R.T.: 8.607 min  
 Delta R.T.: 0.013 min  
 Response: 719395  
 Conc: 2.95 ng/ml

Instrument :  
 ECD\_P  
 ClientSampleId :



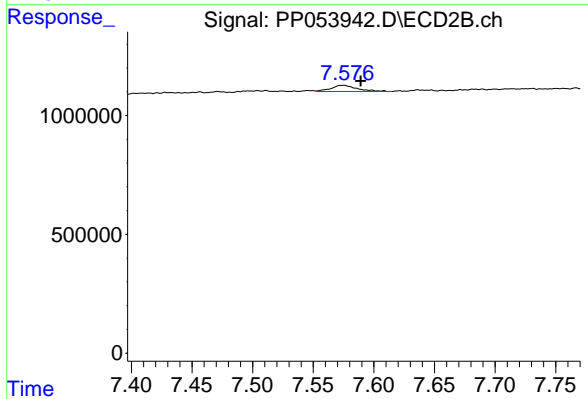
#41 AR-1268-1

R.T.: 0.000 min  
 Exp R.T. : 7.526 min  
 Response: 0  
 Conc: N.D.



#42 AR-1268-2

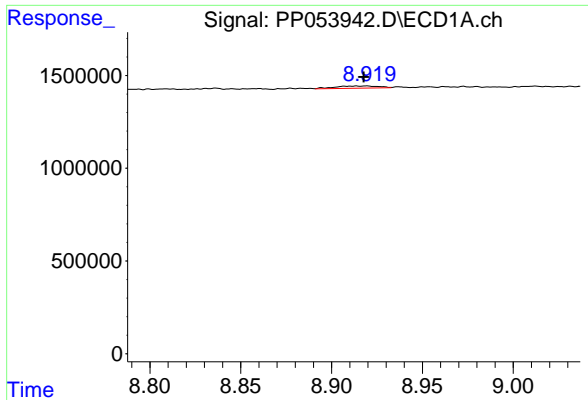
R.T.: 8.675 min  
 Delta R.T.: -0.014 min  
 Response: 379817  
 Conc: 1.67 ng/ml



#42 AR-1268-2

R.T.: 7.575 min  
 Delta R.T.: -0.014 min  
 Response: 385135  
 Conc: 2.26 ng/ml

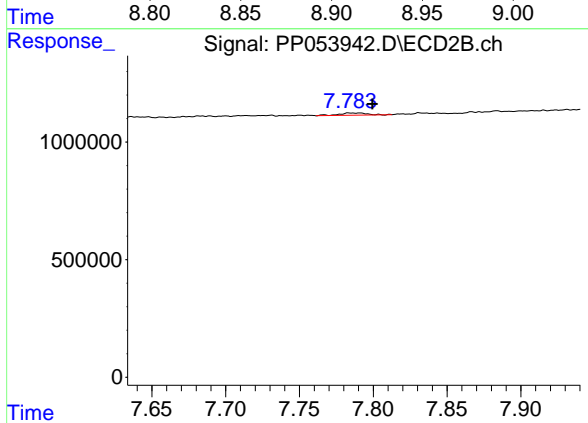




#43 AR-1268-3

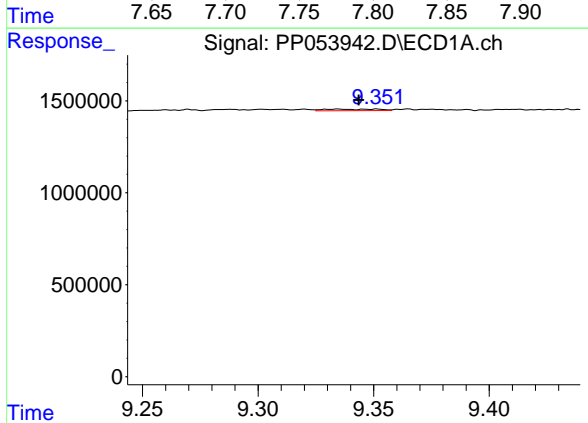
R.T.: 8.919 min  
 Delta R.T.: 0.002 min  
 Response: 203701  
 Conc: 1.06 ng/ml

Instrument :  
 ECD\_P  
 ClientSampleId :



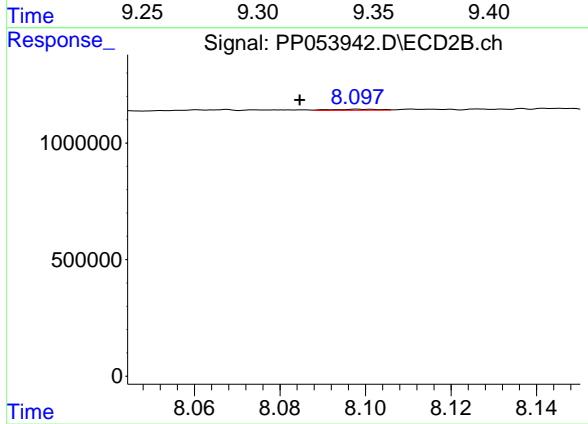
#43 AR-1268-3

R.T.: 7.784 min  
 Delta R.T.: -0.015 min  
 Response: 127526  
 Conc: 0.86 ng/ml



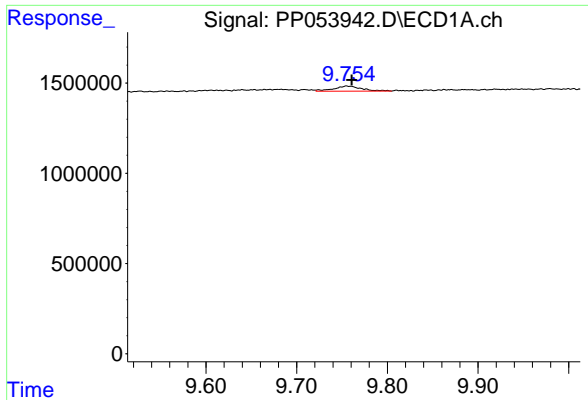
#44 AR-1268-4

R.T.: 9.335 min  
 Delta R.T.: -0.009 min  
 Response: 131874  
 Conc: 1.71 ng/ml



#44 AR-1268-4

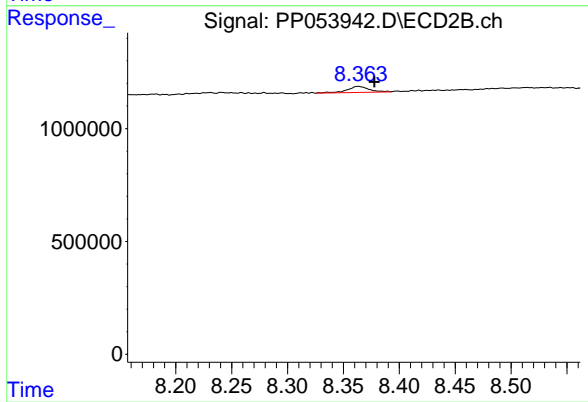
R.T.: 8.099 min  
 Delta R.T.: 0.014 min  
 Response: 34752  
 Conc: 0.62 ng/ml



#45 AR-1268-5

R.T.: 9.755 min  
 Delta R.T.: -0.006 min  
 Response: 609823  
 Conc: 1.04 ng/ml

Instrument :  
 ECD\_P  
 ClientSampleId :



#45 AR-1268-5

R.T.: 8.363 min  
 Delta R.T.: -0.015 min  
 Response: 361510  
 Conc: 0.76 ng/ml