

Data Path : Z:\pestpcbsrv\HPCHEM1\ECD_P\Data\PP122222\
 Data File : PP053944.D
 Signal(s) : Signal #1: ECD1A.ch Signal #2: ECD2B.ch
 Acq On : 22 Dec 2022 10:13
 Operator : YP\AJ
 Sample : AR1254CCC500
 Misc :
 ALS Vial : 6 Sample Multiplier: 1

Instrument :
 ECD_P
 ClientSampleId :

Integration File signal 1: autoint1.e
 Integration File signal 2: autoint2.e
 Quant Time: Dec 22 13:54:24 2022
 Quant Method : Z:\pestpcbsrv\HPCHEM1\ECD_P\methods\PP121322.M
 Quant Title : GC EXTRACTABLES
 QLast Update : Wed Dec 14 05:38:40 2022
 Response via : Initial Calibration
 Integrator: ChemStation

Volume Inj. : 2 µl
 Signal #1 Phase : ZB-MR2 Signal #2 Phase: ZB-MR2
 Signal #1 Info : 30Mx0.32mmx 0.50µ Signal #2 Info : 30M x 0.32mm x 0.25µm

Compound	RT#1	RT#2	Resp#1	Resp#2	ng/ml	ng/ml

System Monitoring Compounds						
1) SA Tetrachlo...	4.337	3.589	108.3E6	77975459	51.573	49.929
2) SA Decachlor...	10.098	8.621	83972110	71477048	49.460	51.174
Target Compounds						
3) L1 AR-1016-1	5.509	4.679	917365	565555	13.529	12.314
4) L1 AR-1016-2	5.536	4.697	1166553	432114	11.711	6.896 #
5) L1 AR-1016-3	5.595	4.876	465285	307961	7.362	9.073
6) L1 AR-1016-4	5.691	4.916	501996	15039859	10.131	504.717 #
7) L1 AR-1016-5	5.988	5.130	13239733	8646760	251.535	238.455
8) L2 AR-1221-1	4.543	3.800	174231	243220	6.763	12.562 #
9) L2 AR-1221-2	4.644	3.889	1634454	1261372	83.952	86.293
10) L2 AR-1221-3	4.708	3.967	343859	258299	5.917	5.807
11) L3 AR-1232-1	4.708	3.967	343859	258299	7.677	7.506
12) L3 AR-1232-2	5.240	4.697	391854	432114	15.233	14.478
13) L3 AR-1232-3	5.536	4.876	1166553	307961	24.854	19.438
14) L3 AR-1232-4	5.691	4.958	501996	4571818	21.187	295.860 #
15) L3 AR-1232-5	5.784	5.130	22215587	8646760	1204.579	525.096 #
16) L4 AR-1242-1	5.509	4.679	917365	565555	17.513	15.970
17) L4 AR-1242-2	5.536	4.697	1166553	432114	15.311	8.994 #
18) L4 AR-1242-3	5.595	4.876	465285	307961	9.497	11.812
19) L4 AR-1242-4	5.691	4.958	501996	4571818	13.077	160.254 #
20) L4 AR-1242-5	6.436	5.485	12525303	35449908	307.097	1161.407 #
21) L5 AR-1248-1	5.509	4.679	917365	565555	21.766	19.881
22) L5 AR-1248-2	5.784	4.916	22215587	15039859	351.511	363.556
23) L5 AR-1248-3	5.988	4.958	13239733	4571818	189.018	108.859 #
24) L5 AR-1248-4	6.394	5.130	17998526	8646760	255.202	179.713 #
25) L5 AR-1248-5	6.436	5.525	12525303	3932749	177.749	104.737 #
26) L6 AR-1254-1	6.368	5.485	38051341	35449908	491.033	541.358
27) L6 AR-1254-2	6.587	5.633	58832727	31991489	505.667	548.554
28) L6 AR-1254-3	6.954	6.038	60181880	49609950	513.815	563.929
29) L6 AR-1254-4	7.242	6.268	43569080	27584969	549.572	602.094
30) L6 AR-1254-5	7.663	6.688	50440369	45348875	517.205	581.890
31) L7 AR-1260-1	7.120	6.170	26721756	25588836	276.700	392.292 #
32) L7 AR-1260-2	7.378	6.358	30210496	20907605	273.469	277.639
33) L7 AR-1260-3	7.723f	6.511	8009195	21181984	105.928	292.229 #
34) L7 AR-1260-4	7.951f	6.987	21114623	2348157	224.971	43.277 #
35) L7 AR-1260-5	8.282	7.228	8005748	5682130	50.487	47.515
36) L8 AR-1262-1	7.723f	6.779	8009195	1852076	66.907	51.929
37) L8 AR-1262-2	8.282	6.987	8005748	2348157	41.750	30.208 #
38) L8 AR-1262-3	8.607	7.514	6825489	158231	49.258	2.511 #
39) L8 AR-1262-4	0.000	7.576	0	5539746	N.D.	48.451 #
40) L8 AR-1262-5	9.337	8.074	401590	218084	5.683	4.378
41) L9 AR-1268-1	8.607	7.514	6825489	158231	27.968	0.875 #

Data Path : Z:\pestpcbsrv\HPCHEM1\ECD_P\Data\PP122222\
 Data File : PP053944.D
 Signal(s) : Signal #1: ECD1A.ch Signal #2: ECD2B.ch
 Acq On : 22 Dec 2022 10:13
 Operator : YP\AJ
 Sample : AR1254CCC500
 Misc :
 ALS Vial : 6 Sample Multiplier: 1

Instrument :
 ECD_P
 ClientSampleId :

Integration File signal 1: autoint1.e
 Integration File signal 2: autoint2.e
 Quant Time: Dec 22 13:54:24 2022
 Quant Method : Z:\pestpcbsrv\HPCHEM1\ECD_P\methods\PP121322.M
 Quant Title : GC EXTRACTABLES
 QLast Update : Wed Dec 14 05:38:40 2022
 Response via : Initial Calibration
 Integrator: ChemStation

Volume Inj. : 2 µl
 Signal #1 Phase : ZB-MR1 Signal #2 Phase: ZB-MR2
 Signal #1 Info : 30Mx0.32mmx 0.50µ Signal #2 Info : 30M x 0.32mm x 0.25µm

	Compound	RT#1	RT#2	Resp#1	Resp#2	ng/ml	ng/ml
42)	L9 AR-1268-2	0.000	7.576	0	5539746	N.D.	32.463 #
43)	L9 AR-1268-3	8.914	7.788	271775	84247	1.418	0.570 #
44)	L9 AR-1268-4	9.337	8.074	401590	218084	5.217	3.913
45)	L9 AR-1268-5	9.759	8.365	536040	386831	0.912	0.818

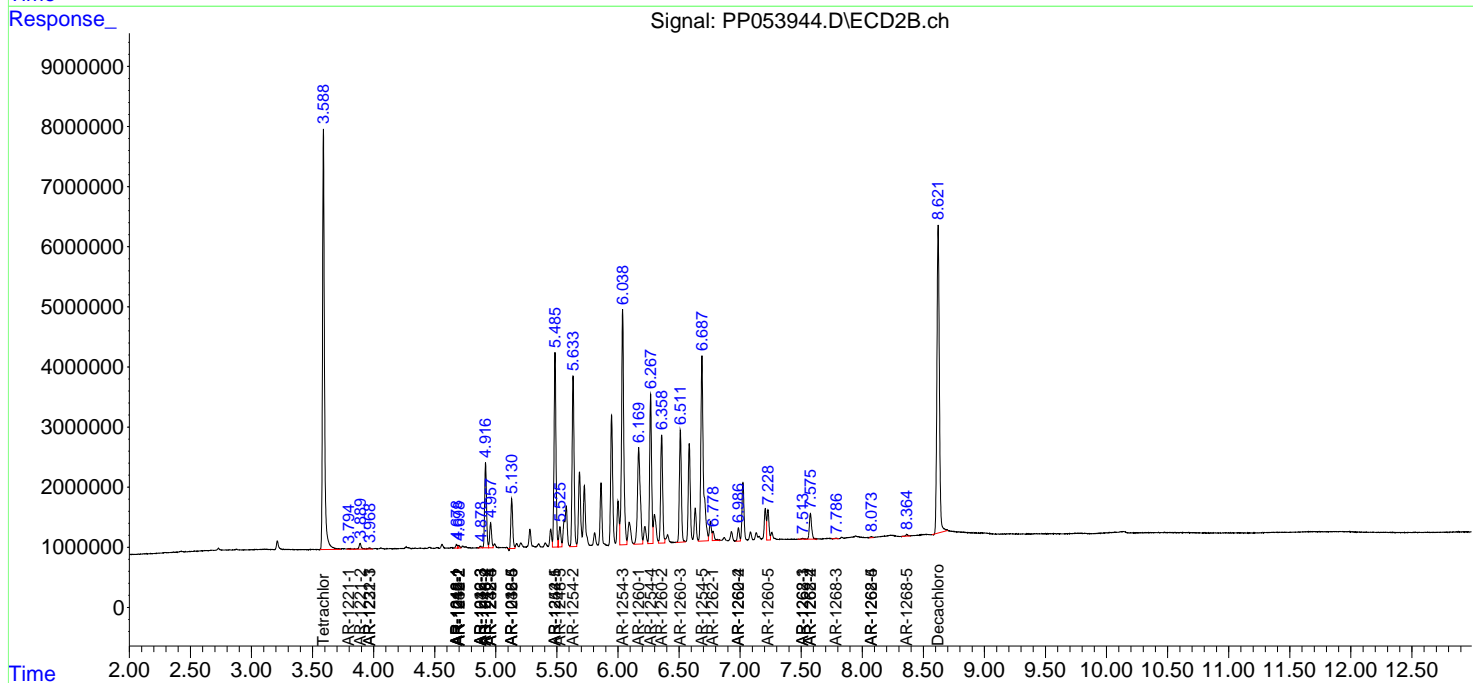
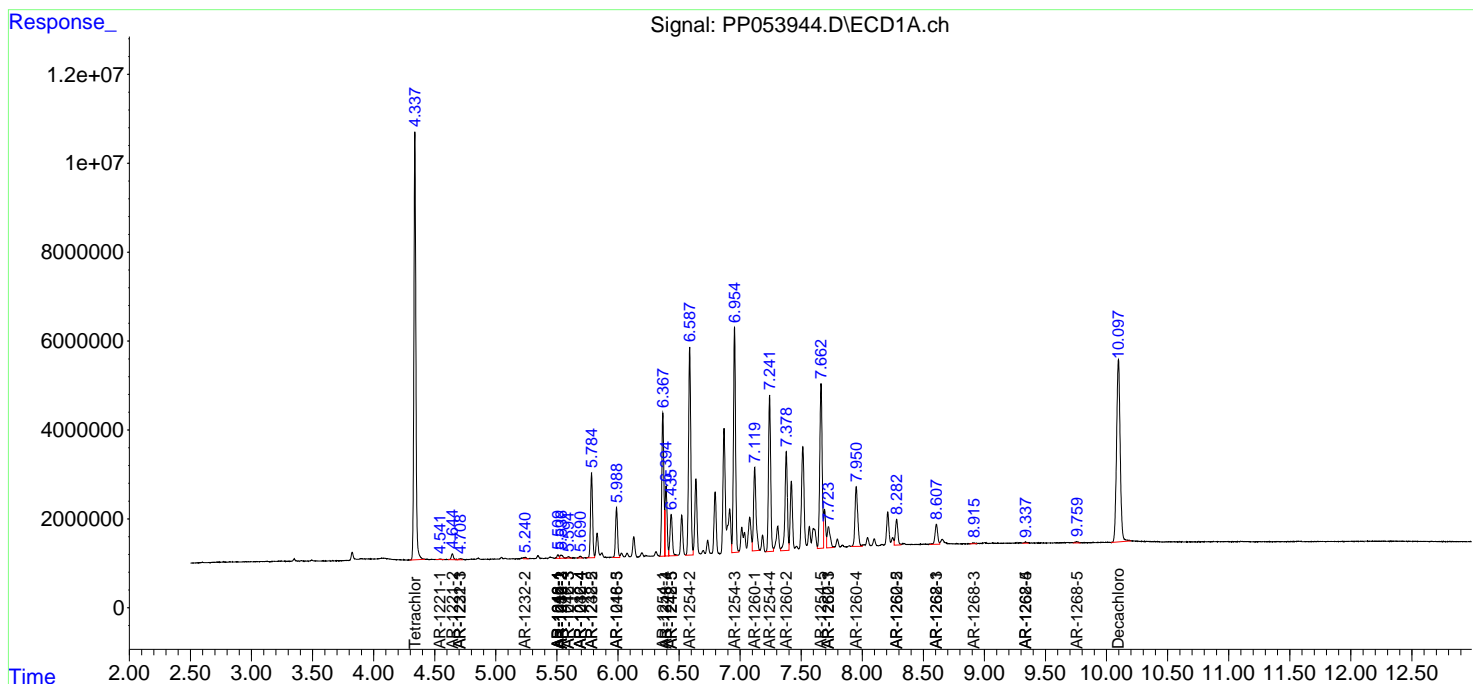
(f)=RT Delta > 1/2 Window (#)=Amounts differ by > 25% (m)=manual int.

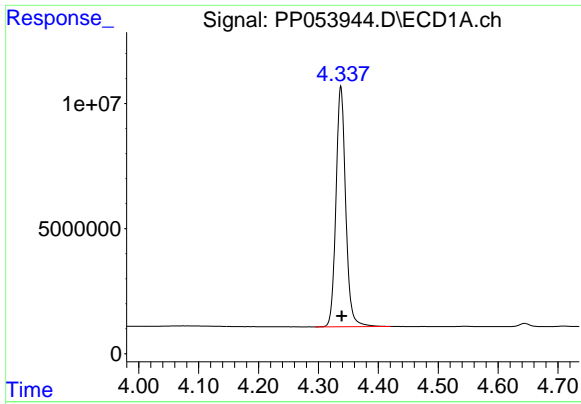
Data Path : Z:\pestpcbsrv\HPCHEM1\ECD_P\Data\PP122222\
 Data File : PP053944.D
 Signal(s) : Signal #1: ECD1A.ch Signal #2: ECD2B.ch
 Acq On : 22 Dec 2022 10:13
 Operator : YP\AJ
 Sample : AR1254CCC500
 Misc :
 ALS Vial : 6 Sample Multiplier: 1

Instrument :
 ECD_P
 ClientSampleId :

Integration File signal 1: autoint1.e
 Integration File signal 2: autoint2.e
 Quant Time: Dec 22 13:54:24 2022
 Quant Method : Z:\pestpcbsrv\HPCHEM1\ECD_P\methods\PP121322.M
 Quant Title : GC EXTRACTABLES
 QLast Update : Wed Dec 14 05:38:40 2022
 Response via : Initial Calibration
 Integrator: ChemStation

Volume Inj. : 2 µl
 Signal #1 Phase : ZB-MR1 Signal #2 Phase: ZB-MR2
 Signal #1 Info : 30Mx0.32mmx 0.50µ Signal #2 Info : 30M x 0.32mm x 0.25µm

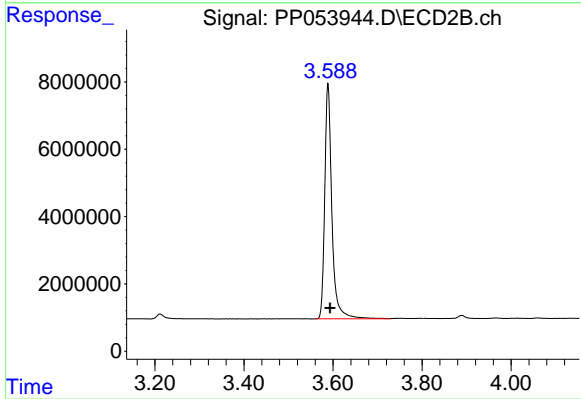




#1 Tetrachloro-m-xylene

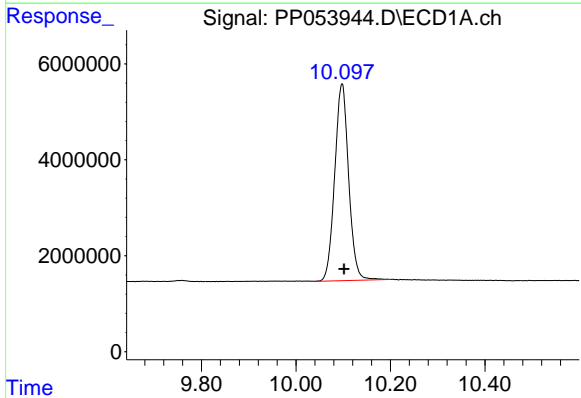
R.T.: 4.337 min
 Delta R.T.: -0.002 min
 Response: 108290189
 Conc: 51.57 ng/ml

Instrument :
 ECD_P
 ClientSampleId :



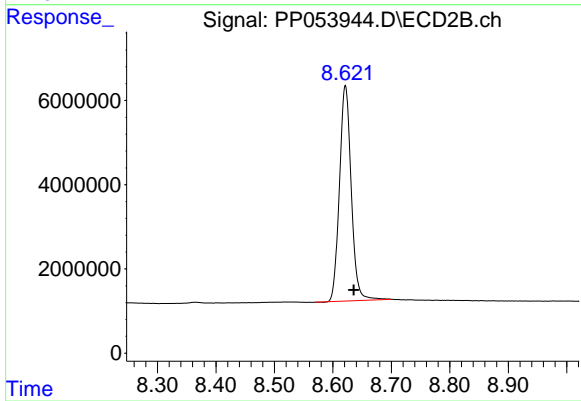
#1 Tetrachloro-m-xylene

R.T.: 3.589 min
 Delta R.T.: -0.005 min
 Response: 77975459
 Conc: 49.93 ng/ml



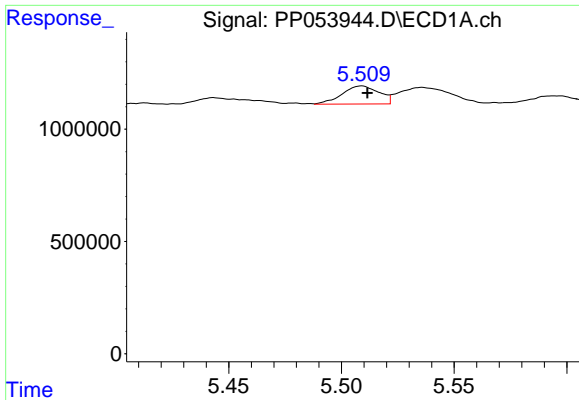
#2 Decachlorobiphenyl

R.T.: 10.098 min
 Delta R.T.: -0.004 min
 Response: 83972110
 Conc: 49.46 ng/ml



#2 Decachlorobiphenyl

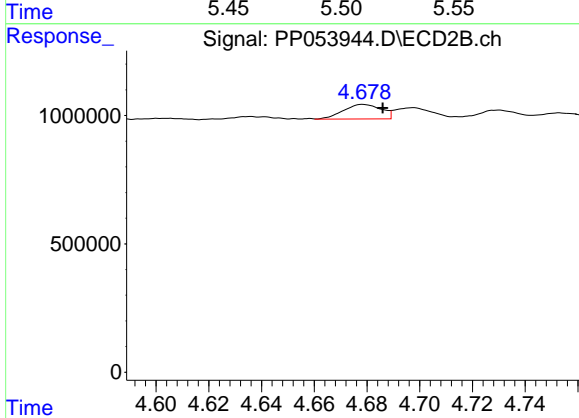
R.T.: 8.621 min
 Delta R.T.: -0.014 min
 Response: 71477048
 Conc: 51.17 ng/ml



#3 AR-1016-1

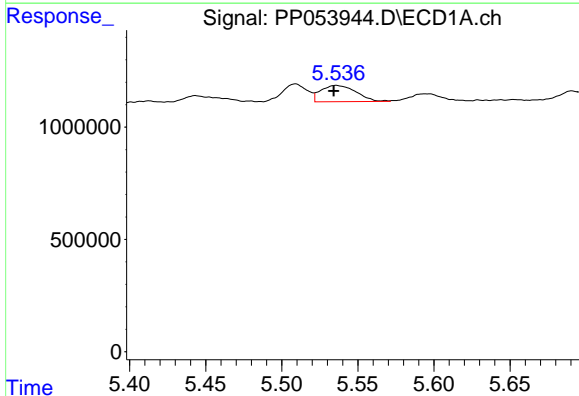
R.T.: 5.509 min
 Delta R.T.: -0.003 min
 Response: 917365
 Conc: 13.53 ng/ml

Instrument :
 ECD_P
 ClientSampleId :



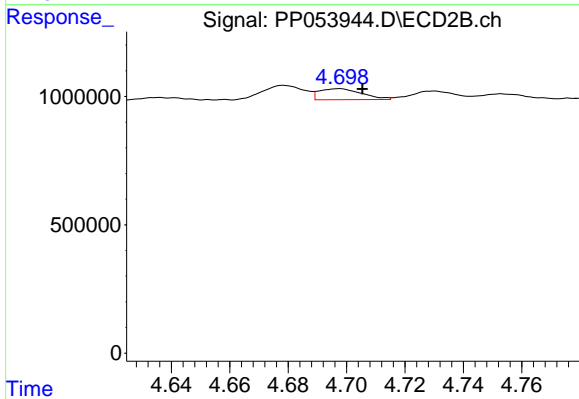
#3 AR-1016-1

R.T.: 4.679 min
 Delta R.T.: -0.007 min
 Response: 565555
 Conc: 12.31 ng/ml



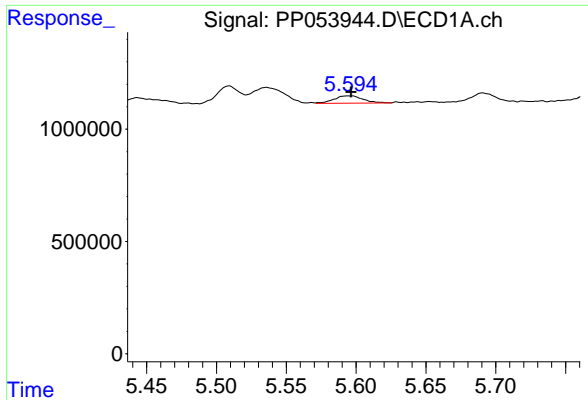
#4 AR-1016-2

R.T.: 5.536 min
 Delta R.T.: 0.001 min
 Response: 1166553
 Conc: 11.71 ng/ml



#4 AR-1016-2

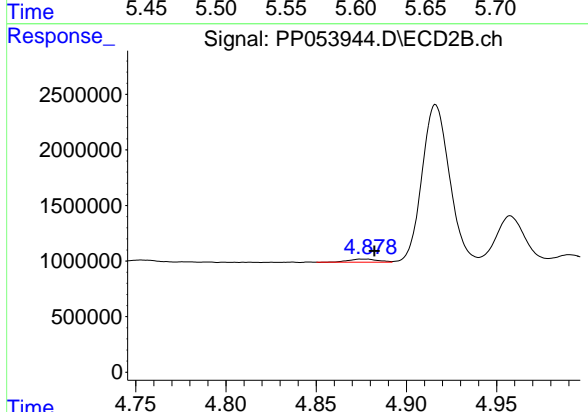
R.T.: 4.697 min
 Delta R.T.: -0.008 min
 Response: 432114
 Conc: 6.90 ng/ml



#5 AR-1016-3

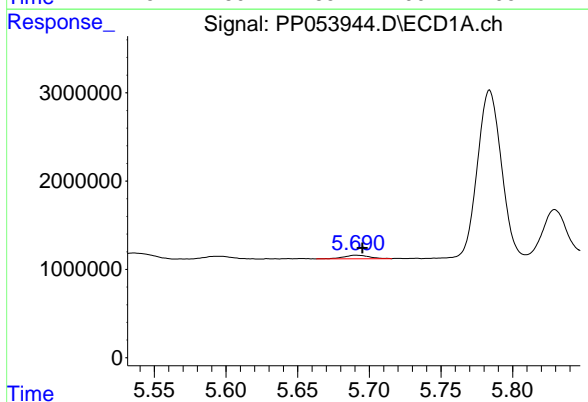
R.T.: 5.595 min
 Delta R.T.: -0.001 min
 Response: 465285
 Conc: 7.36 ng/ml

Instrument :
 ECD_P
 ClientSampleId :



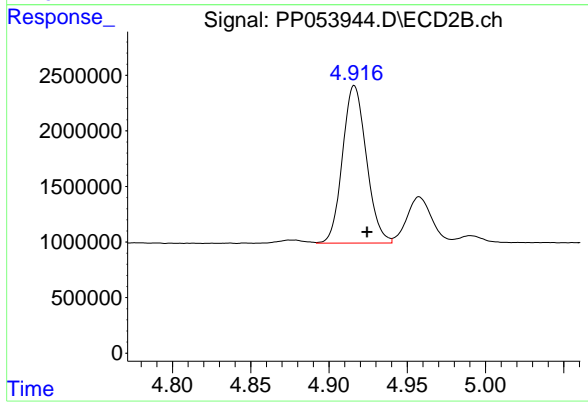
#5 AR-1016-3

R.T.: 4.876 min
 Delta R.T.: -0.006 min
 Response: 307961
 Conc: 9.07 ng/ml



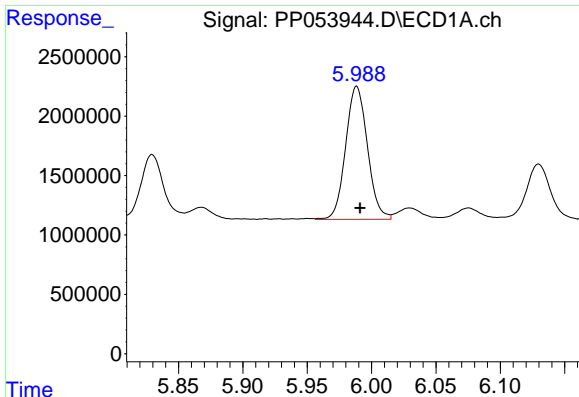
#6 AR-1016-4

R.T.: 5.691 min
 Delta R.T.: -0.005 min
 Response: 501996
 Conc: 10.13 ng/ml



#6 AR-1016-4

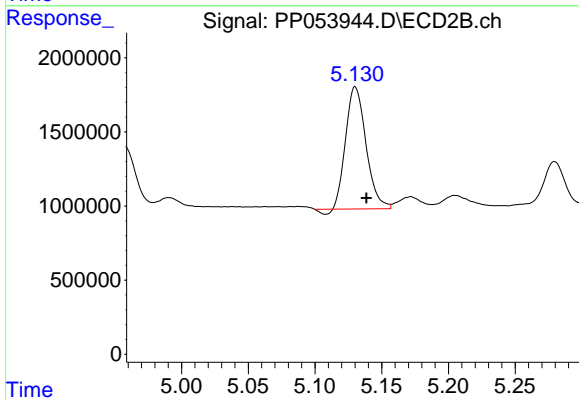
R.T.: 4.916 min
 Delta R.T.: -0.008 min
 Response: 15039859
 Conc: 504.72 ng/ml



#7 AR-1016-5

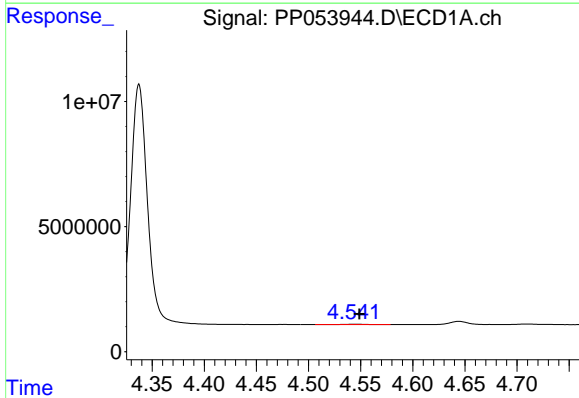
R.T.: 5.988 min
 Delta R.T.: -0.003 min
 Response: 13239733
 Conc: 251.53 ng/ml

Instrument :
 ECD_P
 ClientSampleId :



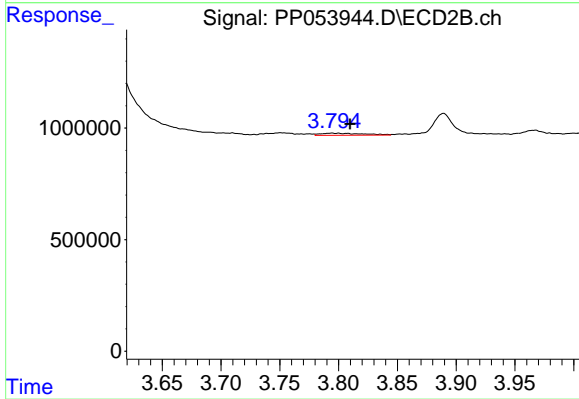
#7 AR-1016-5

R.T.: 5.130 min
 Delta R.T.: -0.008 min
 Response: 8646760
 Conc: 238.46 ng/ml



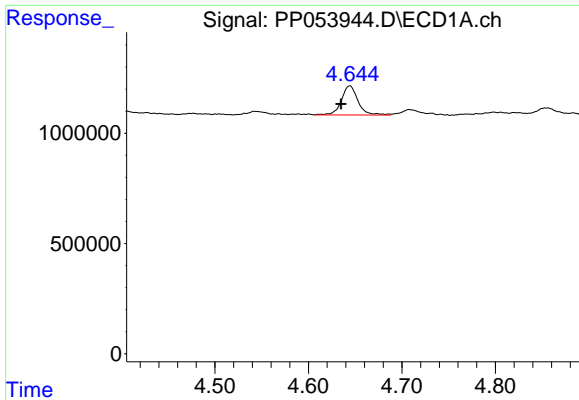
#8 AR-1221-1

R.T.: 4.543 min
 Delta R.T.: -0.006 min
 Response: 174231
 Conc: 6.76 ng/ml



#8 AR-1221-1

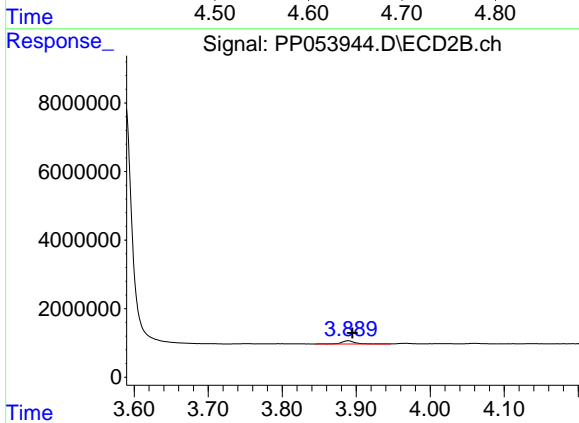
R.T.: 3.800 min
 Delta R.T.: -0.010 min
 Response: 243220
 Conc: 12.56 ng/ml



#9 AR-1221-2

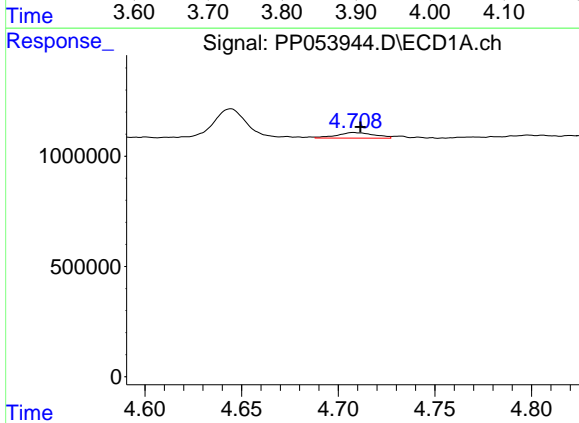
R.T.: 4.644 min
 Delta R.T.: 0.009 min
 Response: 1634454
 Conc: 83.95 ng/ml

Instrument :
 ECD_P
 ClientSampleId :



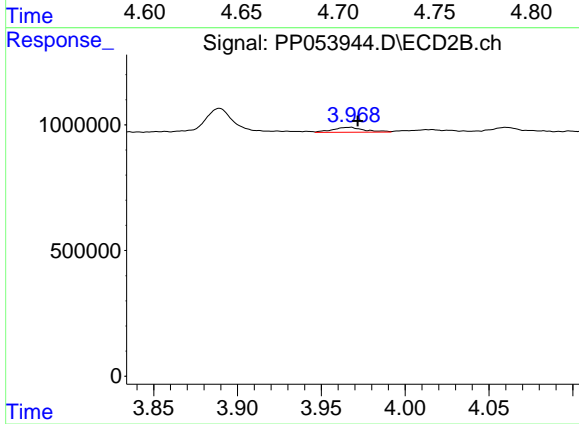
#9 AR-1221-2

R.T.: 3.889 min
 Delta R.T.: -0.006 min
 Response: 1261372
 Conc: 86.29 ng/ml



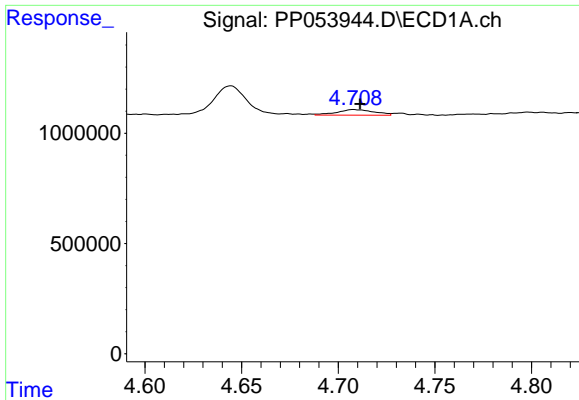
#10 AR-1221-3

R.T.: 4.708 min
 Delta R.T.: -0.003 min
 Response: 343859
 Conc: 5.92 ng/ml



#10 AR-1221-3

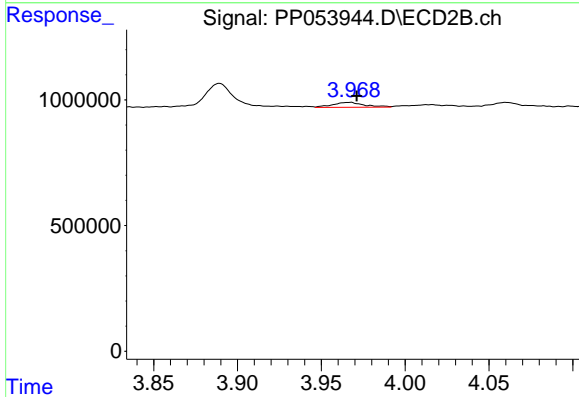
R.T.: 3.967 min
 Delta R.T.: -0.005 min
 Response: 258299
 Conc: 5.81 ng/ml



#11 AR-1232-1

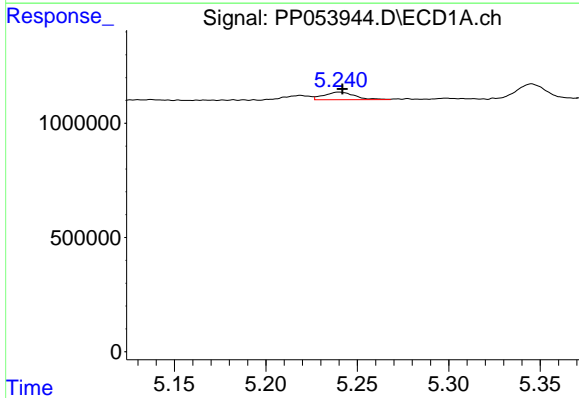
R.T.: 4.708 min
 Delta R.T.: -0.003 min
 Response: 343859
 Conc: 7.68 ng/ml

Instrument :
 ECD_P
 ClientSampleId :



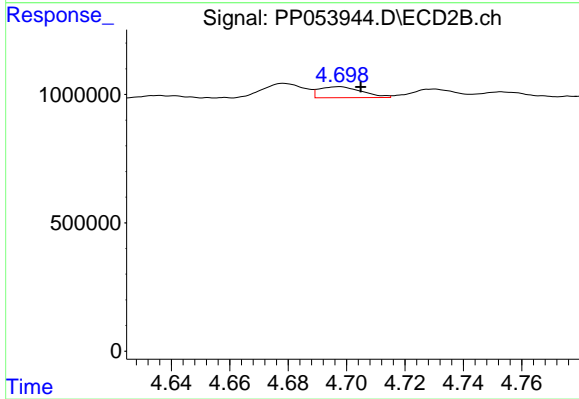
#11 AR-1232-1

R.T.: 3.967 min
 Delta R.T.: -0.004 min
 Response: 258299
 Conc: 7.51 ng/ml



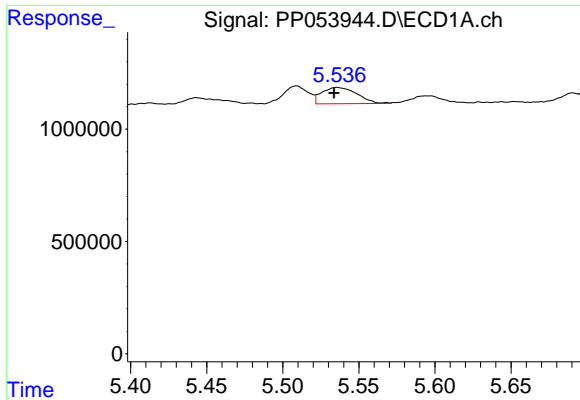
#12 AR-1232-2

R.T.: 5.240 min
 Delta R.T.: -0.002 min
 Response: 391854
 Conc: 15.23 ng/ml



#12 AR-1232-2

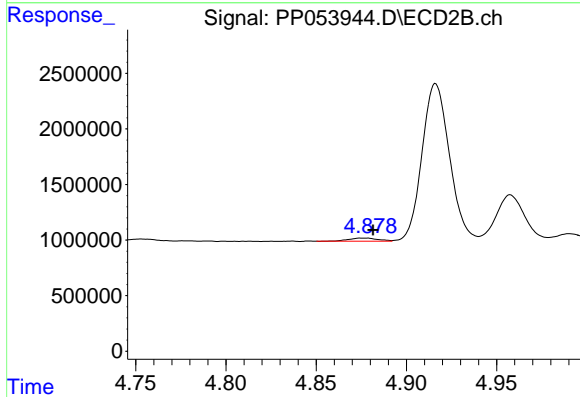
R.T.: 4.697 min
 Delta R.T.: -0.007 min
 Response: 432114
 Conc: 14.48 ng/ml



#13 AR-1232-3

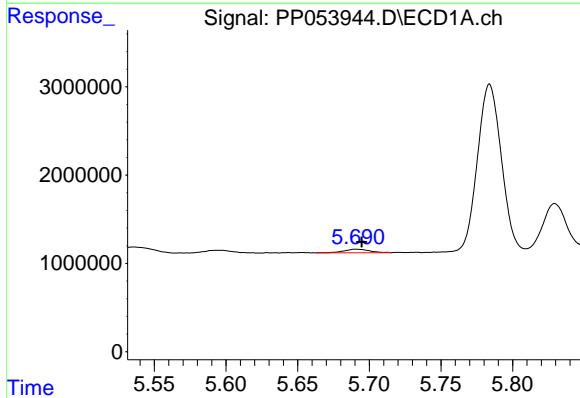
R.T.: 5.536 min
 Delta R.T.: 0.002 min
 Response: 1166553
 Conc: 24.85 ng/ml

Instrument :
 ECD_P
 ClientSampleId :



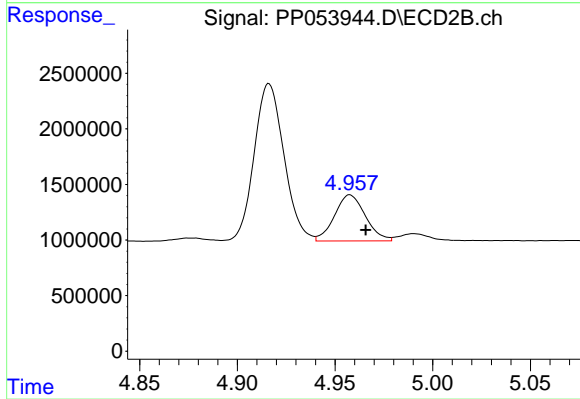
#13 AR-1232-3

R.T.: 4.876 min
 Delta R.T.: -0.006 min
 Response: 307961
 Conc: 19.44 ng/ml



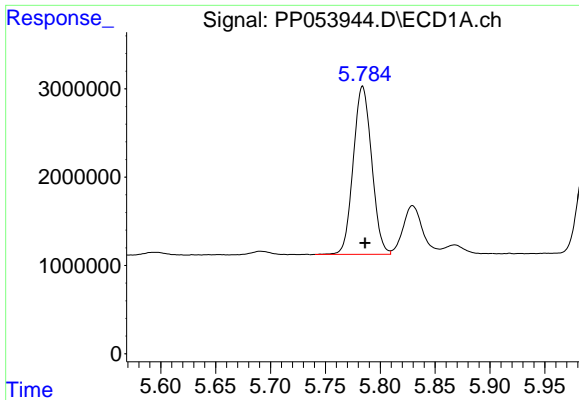
#14 AR-1232-4

R.T.: 5.691 min
 Delta R.T.: -0.004 min
 Response: 501996
 Conc: 21.19 ng/ml



#14 AR-1232-4

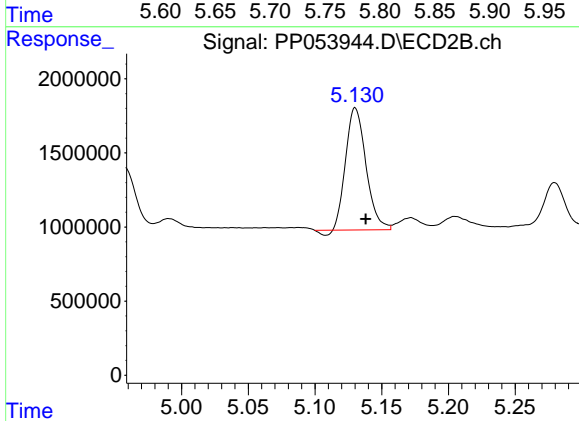
R.T.: 4.958 min
 Delta R.T.: -0.008 min
 Response: 4571818
 Conc: 295.86 ng/ml



#15 AR-1232-5

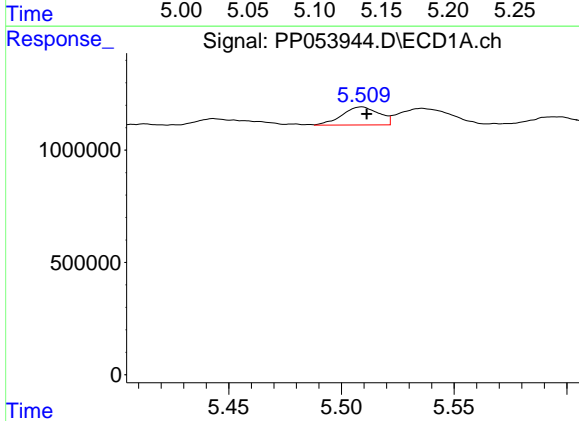
R.T.: 5.784 min
 Delta R.T.: -0.002 min
 Response: 22215587
 Conc: 1204.58 ng/ml

Instrument :
 ECD_P
 ClientSampleId :



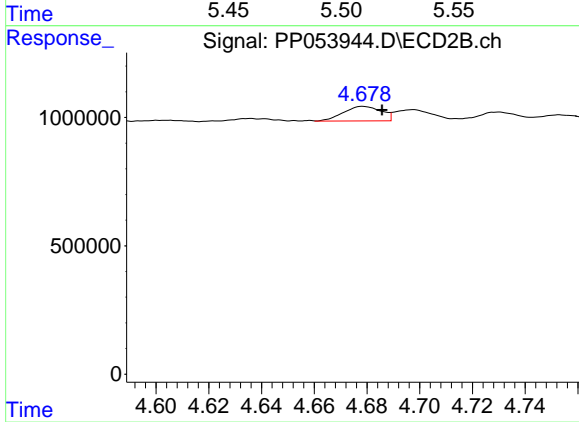
#15 AR-1232-5

R.T.: 5.130 min
 Delta R.T.: -0.008 min
 Response: 8646760
 Conc: 525.10 ng/ml



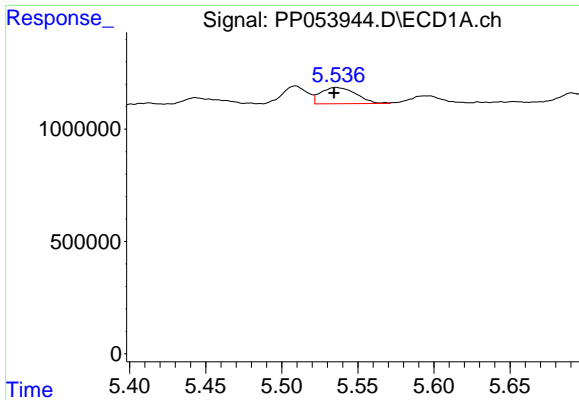
#16 AR-1242-1

R.T.: 5.509 min
 Delta R.T.: -0.002 min
 Response: 917365
 Conc: 17.51 ng/ml



#16 AR-1242-1

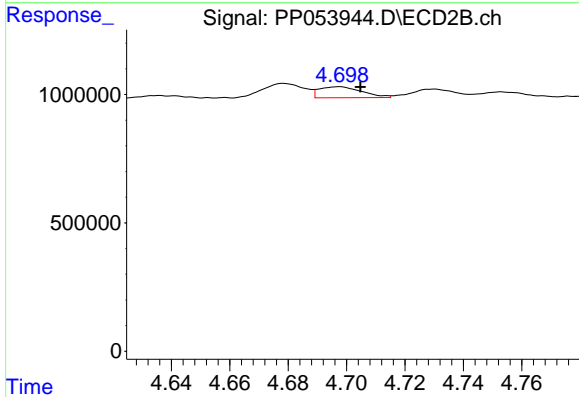
R.T.: 4.679 min
 Delta R.T.: -0.007 min
 Response: 565555
 Conc: 15.97 ng/ml



#17 AR-1242-2

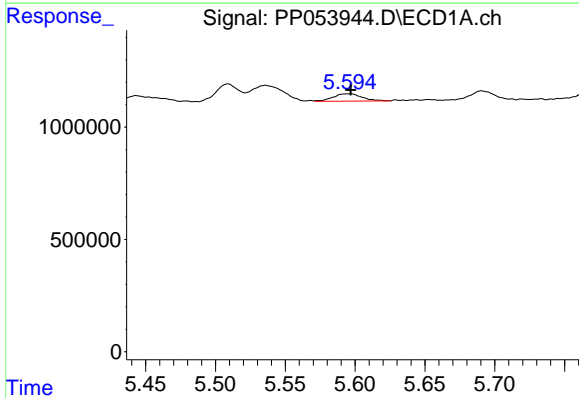
R.T.: 5.536 min
 Delta R.T.: 0.001 min
 Response: 1166553
 Conc: 15.31 ng/ml

Instrument :
 ECD_P
 ClientSampleId :



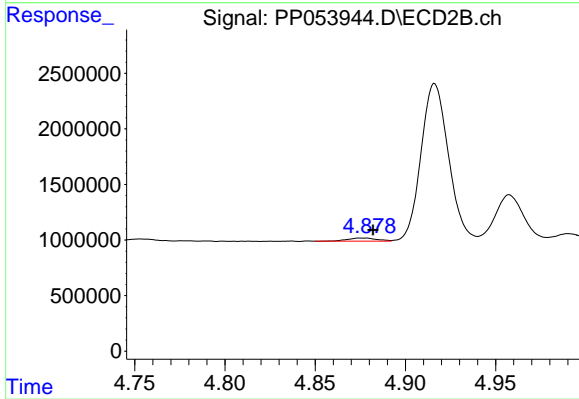
#17 AR-1242-2

R.T.: 4.697 min
 Delta R.T.: -0.007 min
 Response: 432114
 Conc: 8.99 ng/ml



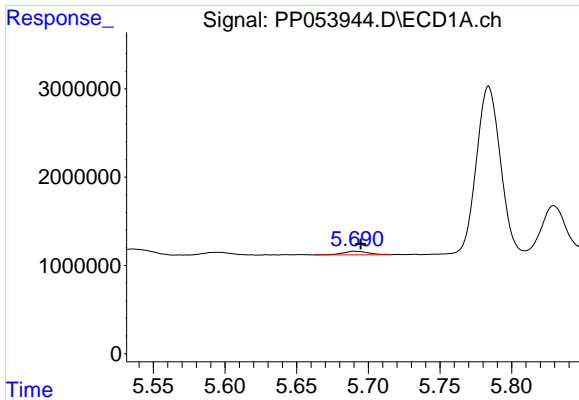
#18 AR-1242-3

R.T.: 5.595 min
 Delta R.T.: -0.002 min
 Response: 465285
 Conc: 9.50 ng/ml



#18 AR-1242-3

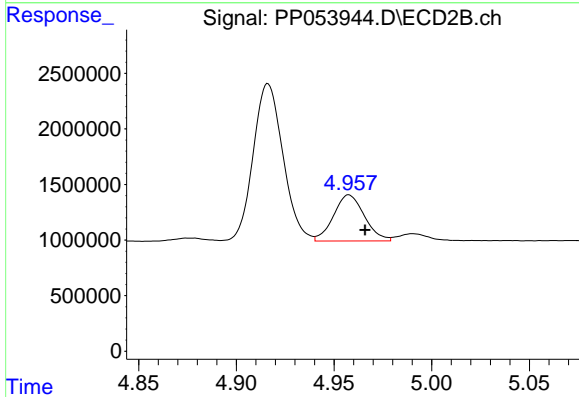
R.T.: 4.876 min
 Delta R.T.: -0.006 min
 Response: 307961
 Conc: 11.81 ng/ml



#19 AR-1242-4

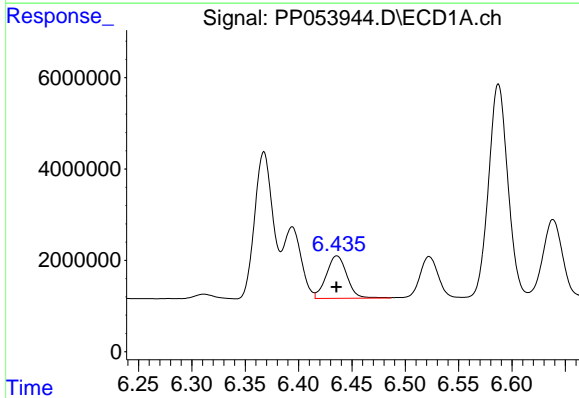
R.T.: 5.691 min
 Delta R.T.: -0.004 min
 Response: 501996
 Conc: 13.08 ng/ml

Instrument :
 ECD_P
 ClientSampleId :



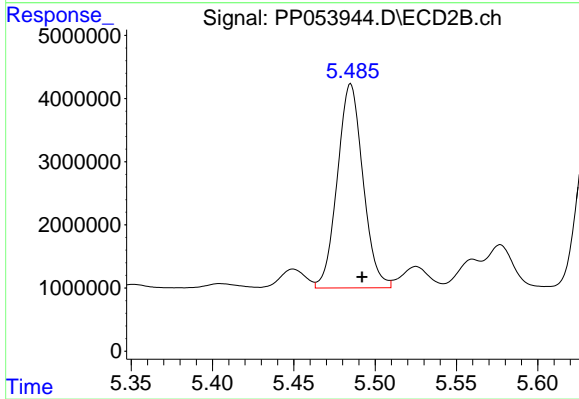
#19 AR-1242-4

R.T.: 4.958 min
 Delta R.T.: -0.008 min
 Response: 4571818
 Conc: 160.25 ng/ml



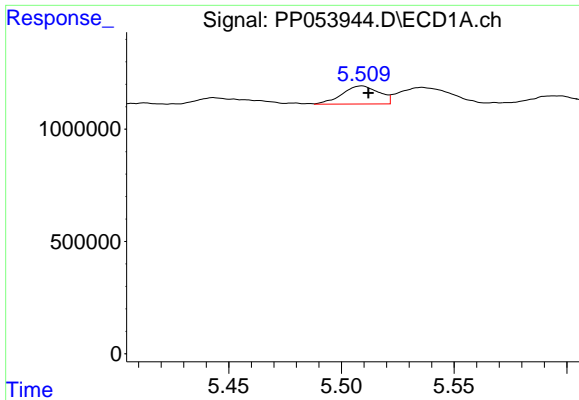
#20 AR-1242-5

R.T.: 6.436 min
 Delta R.T.: 0.000 min
 Response: 12525303
 Conc: 307.10 ng/ml



#20 AR-1242-5

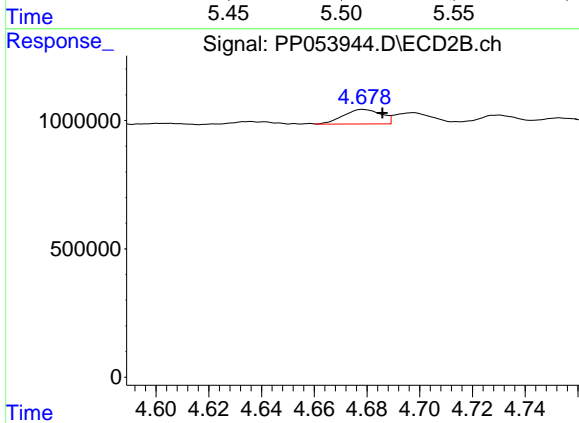
R.T.: 5.485 min
 Delta R.T.: -0.007 min
 Response: 35449908
 Conc: 1161.41 ng/ml



#21 AR-1248-1

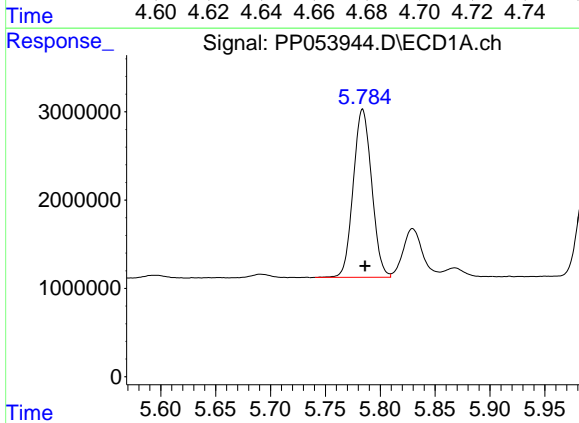
R.T.: 5.509 min
 Delta R.T.: -0.003 min
 Response: 917365
 Conc: 21.77 ng/ml

Instrument :
 ECD_P
 ClientSampleId :



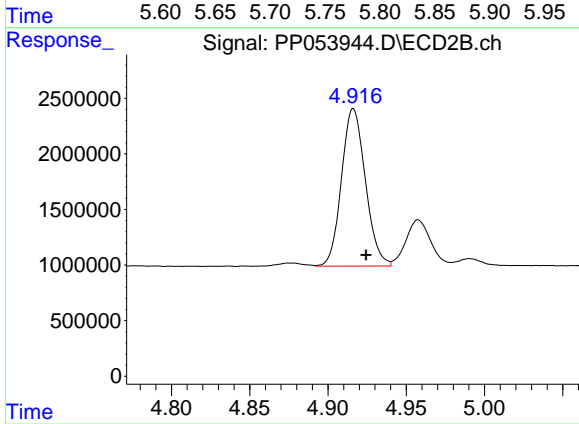
#21 AR-1248-1

R.T.: 4.679 min
 Delta R.T.: -0.007 min
 Response: 565555
 Conc: 19.88 ng/ml



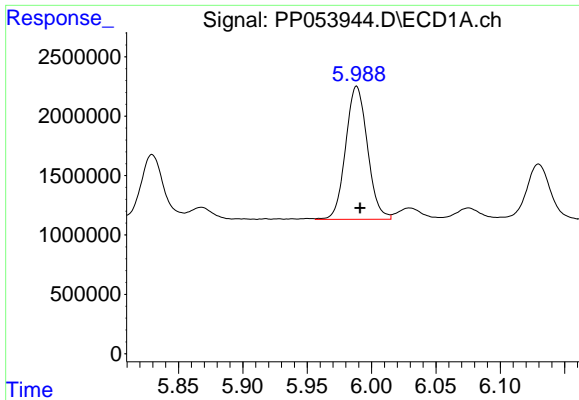
#22 AR-1248-2

R.T.: 5.784 min
 Delta R.T.: -0.002 min
 Response: 22215587
 Conc: 351.51 ng/ml



#22 AR-1248-2

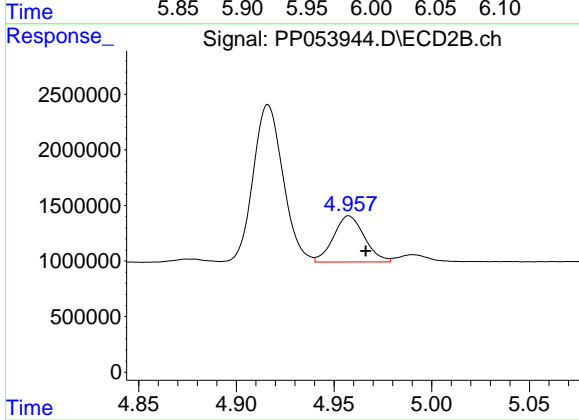
R.T.: 4.916 min
 Delta R.T.: -0.008 min
 Response: 15039859
 Conc: 363.56 ng/ml



#23 AR-1248-3

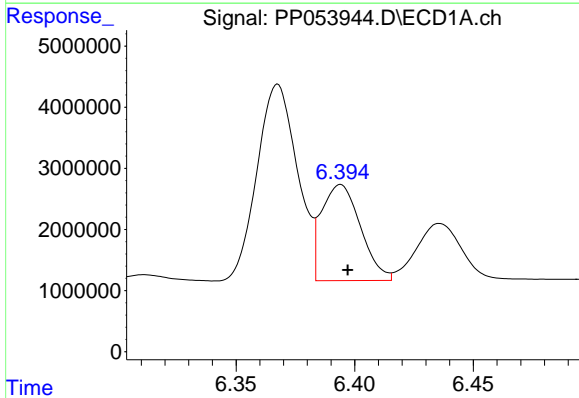
R.T.: 5.988 min
 Delta R.T.: -0.003 min
 Response: 13239733
 Conc: 189.02 ng/ml

Instrument :
 ECD_P
 ClientSampleId :



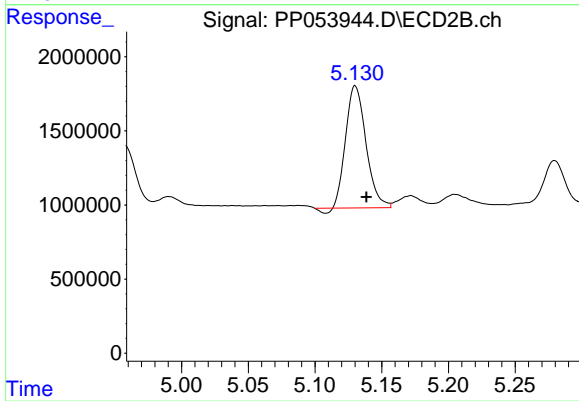
#23 AR-1248-3

R.T.: 4.958 min
 Delta R.T.: -0.008 min
 Response: 4571818
 Conc: 108.86 ng/ml



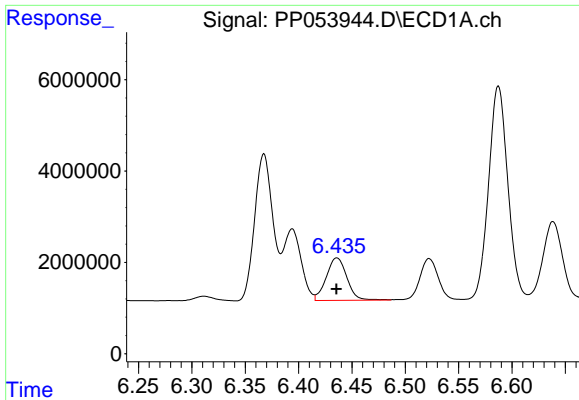
#24 AR-1248-4

R.T.: 6.394 min
 Delta R.T.: -0.003 min
 Response: 17998526
 Conc: 255.20 ng/ml



#24 AR-1248-4

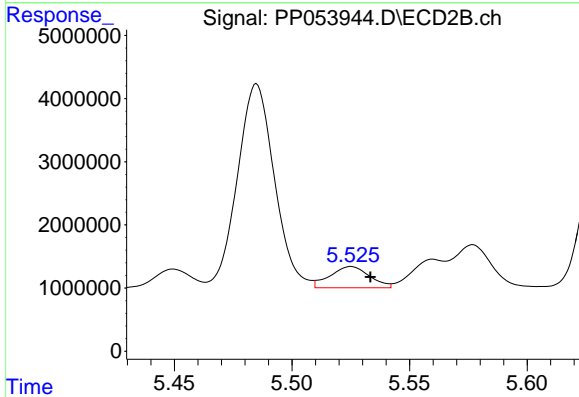
R.T.: 5.130 min
 Delta R.T.: -0.008 min
 Response: 8646760
 Conc: 179.71 ng/ml



#25 AR-1248-5

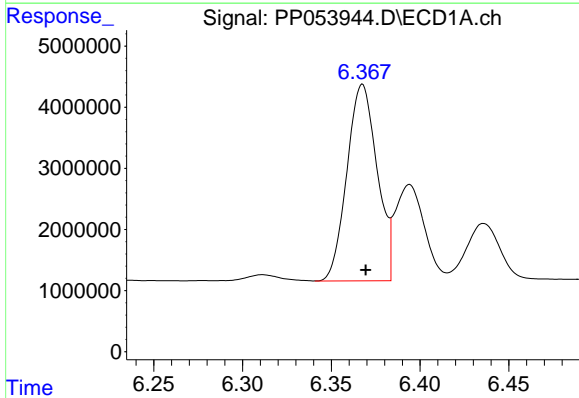
R.T.: 6.436 min
 Delta R.T.: 0.000 min
 Response: 12525303
 Conc: 177.75 ng/ml

Instrument :
 ECD_P
 ClientSampleId :



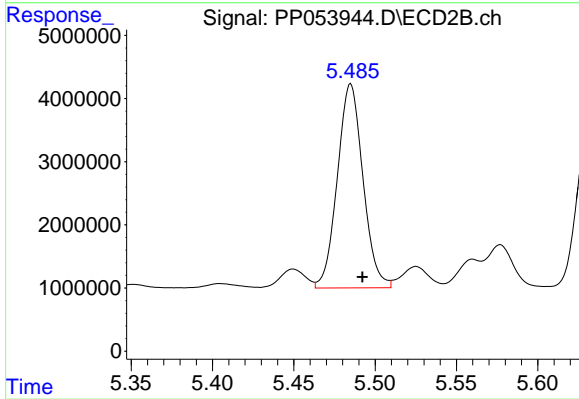
#25 AR-1248-5

R.T.: 5.525 min
 Delta R.T.: -0.008 min
 Response: 3932749
 Conc: 104.74 ng/ml



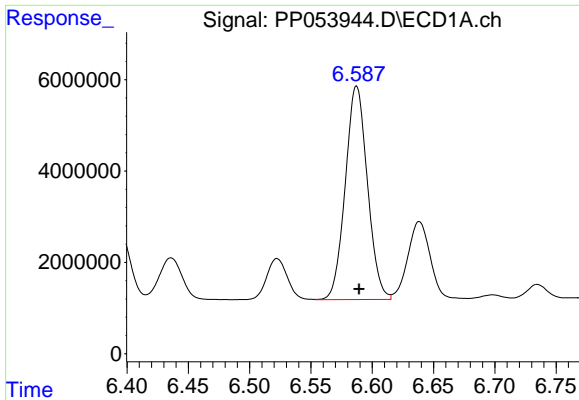
#26 AR-1254-1

R.T.: 6.368 min
 Delta R.T.: -0.002 min
 Response: 38051341
 Conc: 491.03 ng/ml



#26 AR-1254-1

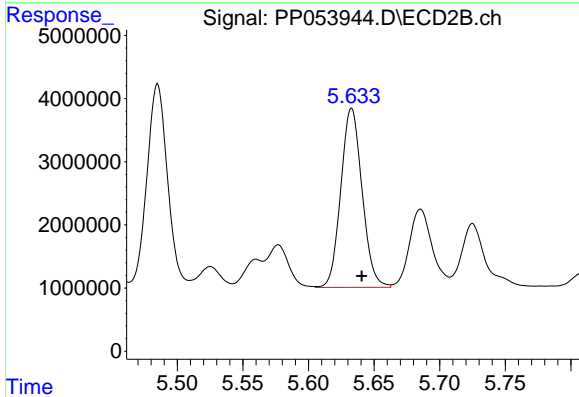
R.T.: 5.485 min
 Delta R.T.: -0.007 min
 Response: 35449908
 Conc: 541.36 ng/ml



#27 AR-1254-2

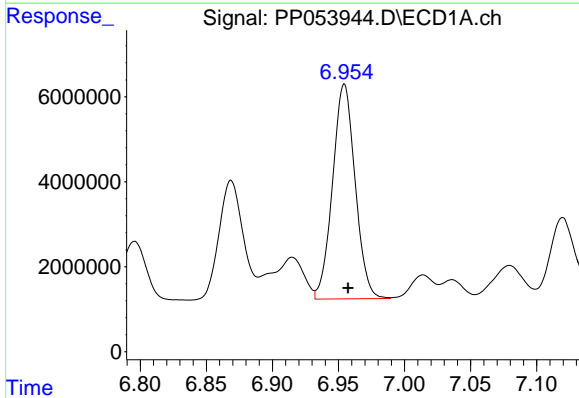
R.T.: 6.587 min
 Delta R.T.: -0.002 min
 Response: 58832727
 Conc: 505.67 ng/ml

Instrument :
 ECD_P
 ClientSampleId :



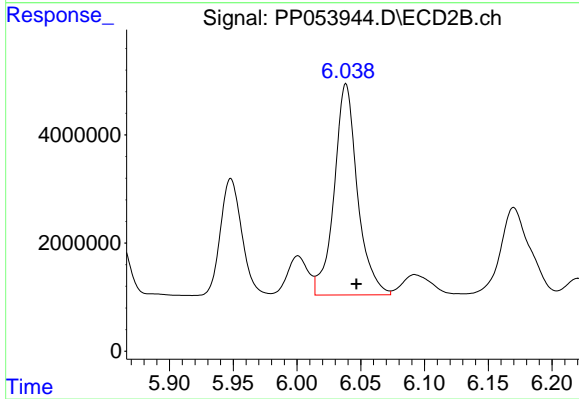
#27 AR-1254-2

R.T.: 5.633 min
 Delta R.T.: -0.008 min
 Response: 31991489
 Conc: 548.55 ng/ml



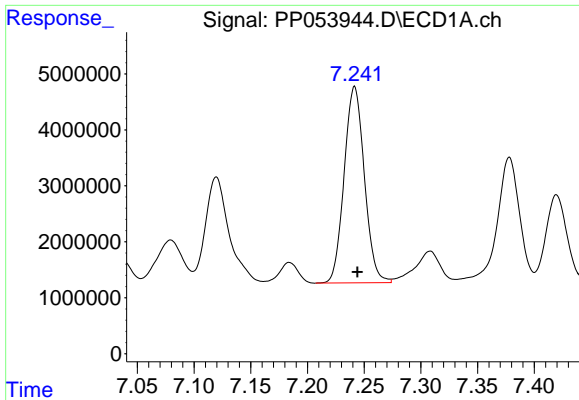
#28 AR-1254-3

R.T.: 6.954 min
 Delta R.T.: -0.003 min
 Response: 60181880
 Conc: 513.82 ng/ml



#28 AR-1254-3

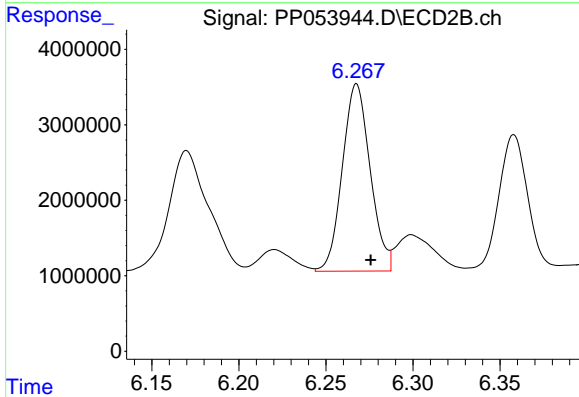
R.T.: 6.038 min
 Delta R.T.: -0.008 min
 Response: 49609950
 Conc: 563.93 ng/ml



#29 AR-1254-4

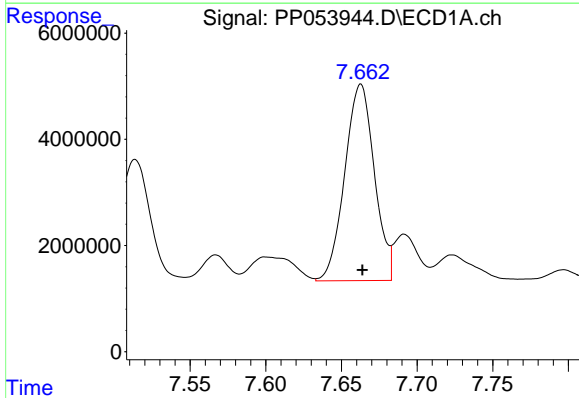
R.T.: 7.242 min
 Delta R.T.: -0.002 min
 Response: 43569080
 Conc: 549.57 ng/ml

Instrument :
 ECD_P
 ClientSampleId :



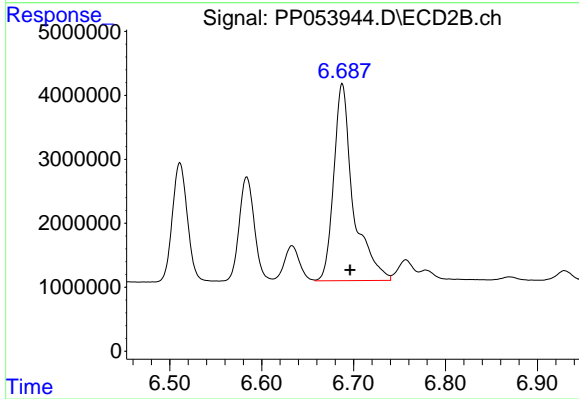
#29 AR-1254-4

R.T.: 6.268 min
 Delta R.T.: -0.008 min
 Response: 27584969
 Conc: 602.09 ng/ml



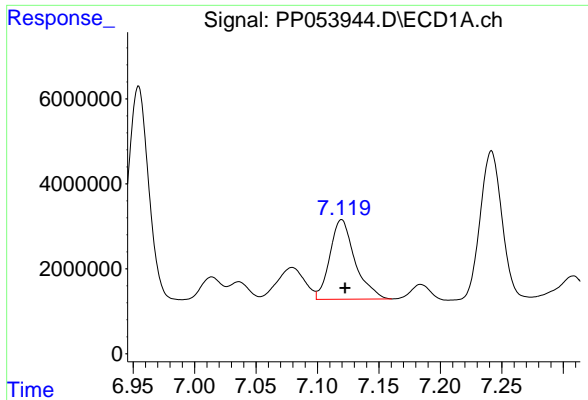
#30 AR-1254-5

R.T.: 7.663 min
 Delta R.T.: 0.000 min
 Response: 50440369
 Conc: 517.20 ng/ml



#30 AR-1254-5

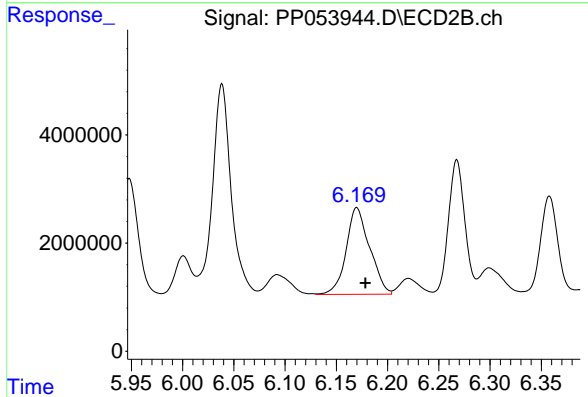
R.T.: 6.688 min
 Delta R.T.: -0.008 min
 Response: 45348875
 Conc: 581.89 ng/ml



#31 AR-1260-1

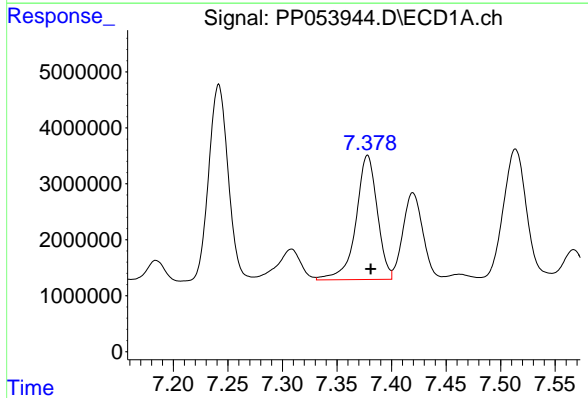
R.T.: 7.120 min
 Delta R.T.: -0.003 min
 Response: 26721756
 Conc: 276.70 ng/ml

Instrument :
 ECD_P
 ClientSampleId :



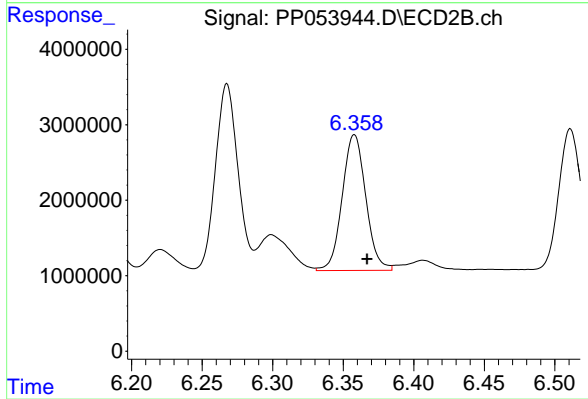
#31 AR-1260-1

R.T.: 6.170 min
 Delta R.T.: -0.009 min
 Response: 25588836
 Conc: 392.29 ng/ml



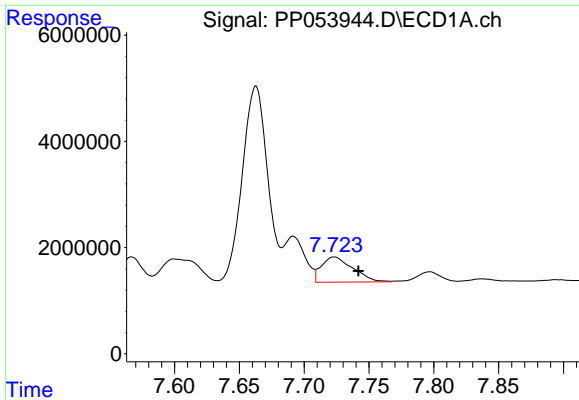
#32 AR-1260-2

R.T.: 7.378 min
 Delta R.T.: -0.003 min
 Response: 30210496
 Conc: 273.47 ng/ml



#32 AR-1260-2

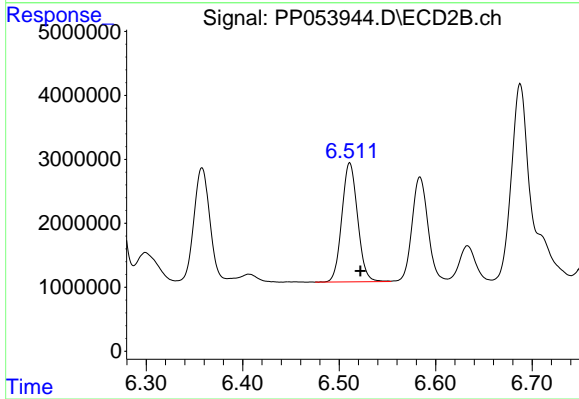
R.T.: 6.358 min
 Delta R.T.: -0.009 min
 Response: 20907605
 Conc: 277.64 ng/ml



#33 AR-1260-3

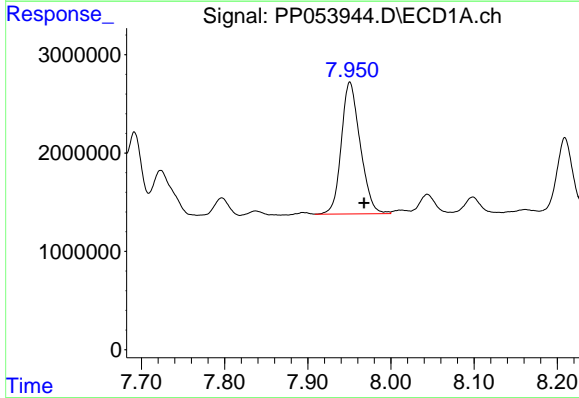
R.T.: 7.723 min
 Delta R.T.: -0.019 min
 Response: 8009195
 Conc: 105.93 ng/ml

Instrument :
 ECD_P
 ClientSampleId :



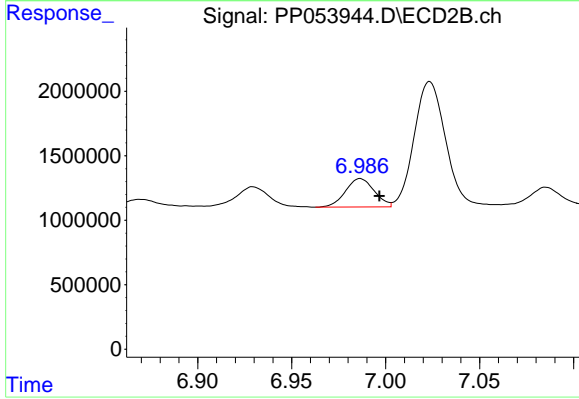
#33 AR-1260-3

R.T.: 6.511 min
 Delta R.T.: -0.011 min
 Response: 21181984
 Conc: 292.23 ng/ml



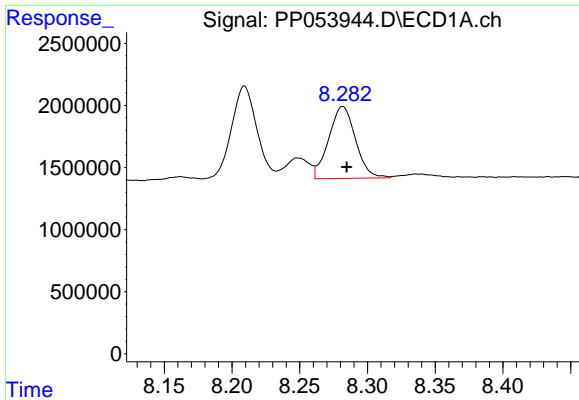
#34 AR-1260-4

R.T.: 7.951 min
 Delta R.T.: -0.017 min
 Response: 21114623
 Conc: 224.97 ng/ml



#34 AR-1260-4

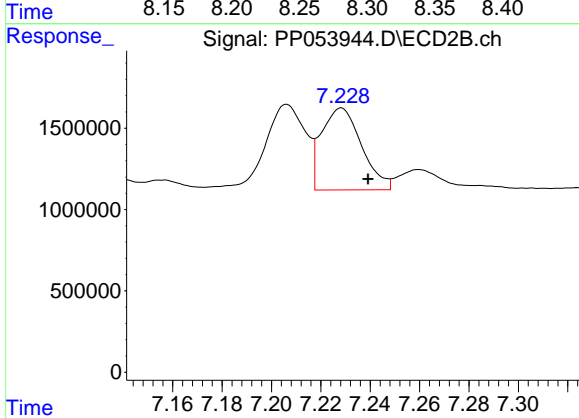
R.T.: 6.987 min
 Delta R.T.: -0.010 min
 Response: 2348157
 Conc: 43.28 ng/ml



#35 AR-1260-5

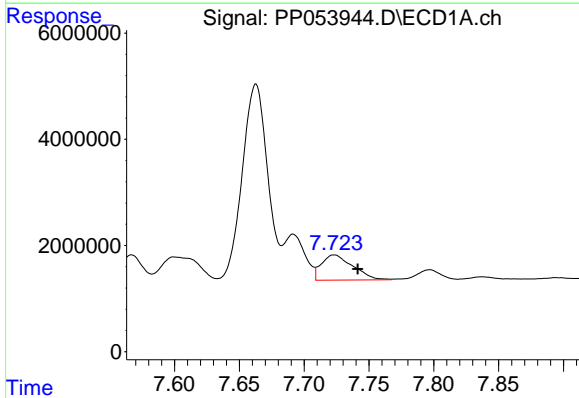
R.T.: 8.282 min
 Delta R.T.: -0.003 min
 Response: 8005748
 Conc: 50.49 ng/ml

Instrument :
 ECD_P
 ClientSampleId :



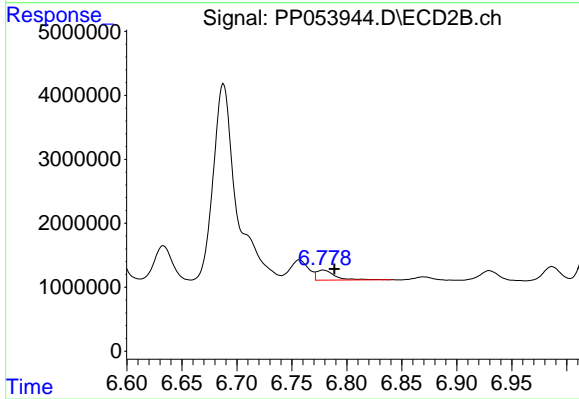
#35 AR-1260-5

R.T.: 7.228 min
 Delta R.T.: -0.011 min
 Response: 5682130
 Conc: 47.52 ng/ml



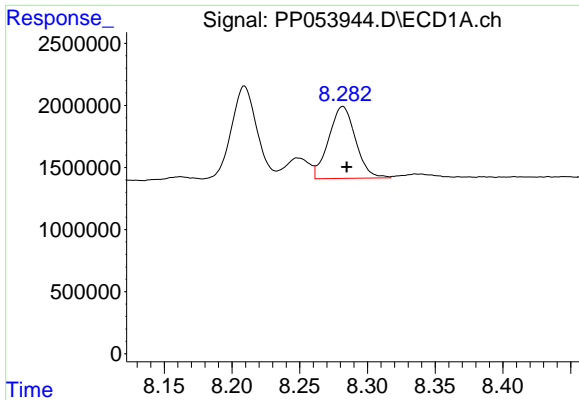
#36 AR-1262-1

R.T.: 7.723 min
 Delta R.T.: -0.018 min
 Response: 8009195
 Conc: 66.91 ng/ml



#36 AR-1262-1

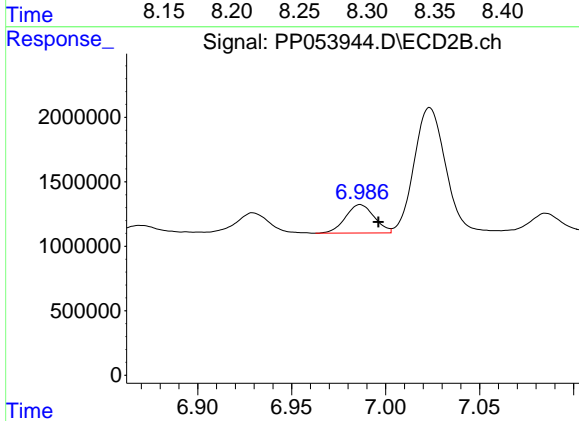
R.T.: 6.779 min
 Delta R.T.: -0.010 min
 Response: 1852076
 Conc: 51.93 ng/ml



#37 AR-1262-2

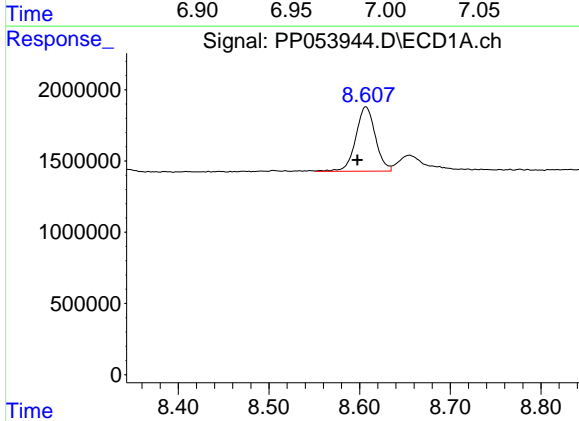
R.T.: 8.282 min
 Delta R.T.: -0.003 min
 Response: 8005748
 Conc: 41.75 ng/ml

Instrument :
 ECD_P
 ClientSampleId :



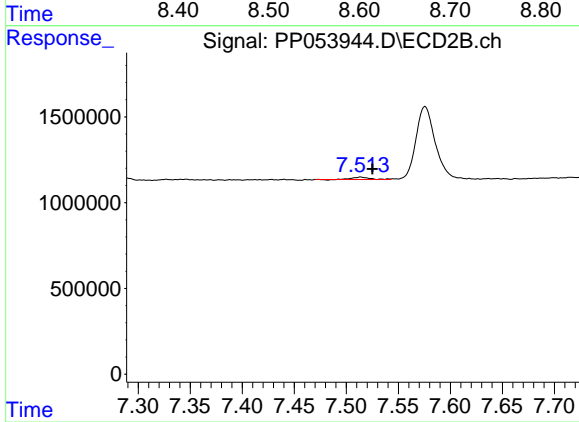
#37 AR-1262-2

R.T.: 6.987 min
 Delta R.T.: -0.010 min
 Response: 2348157
 Conc: 30.21 ng/ml



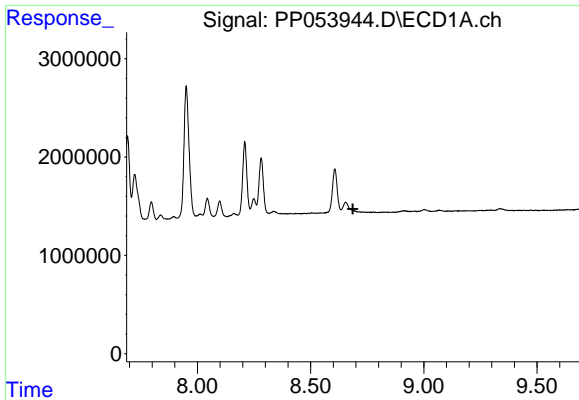
#38 AR-1262-3

R.T.: 8.607 min
 Delta R.T.: 0.009 min
 Response: 6825489
 Conc: 49.26 ng/ml



#38 AR-1262-3

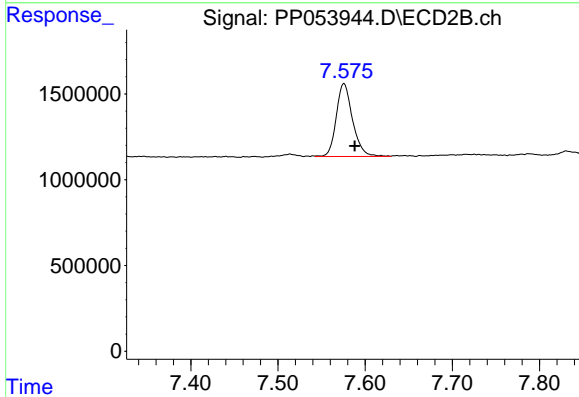
R.T.: 7.514 min
 Delta R.T.: -0.011 min
 Response: 158231
 Conc: 2.51 ng/ml



#39 AR-1262-4

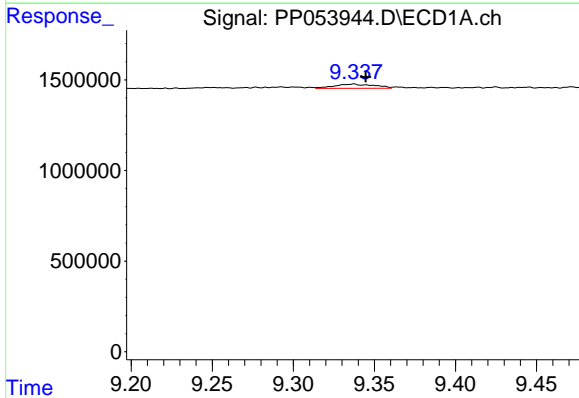
R.T.: 0.000 min
 Exp R.T.: 8.686 min
 Response: 0
 Conc: N.D.

Instrument :
 ECD_P
 ClientSampleId :



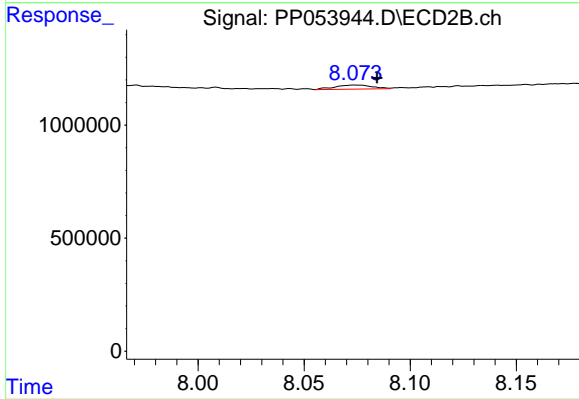
#39 AR-1262-4

R.T.: 7.576 min
 Delta R.T.: -0.012 min
 Response: 5539746
 Conc: 48.45 ng/ml



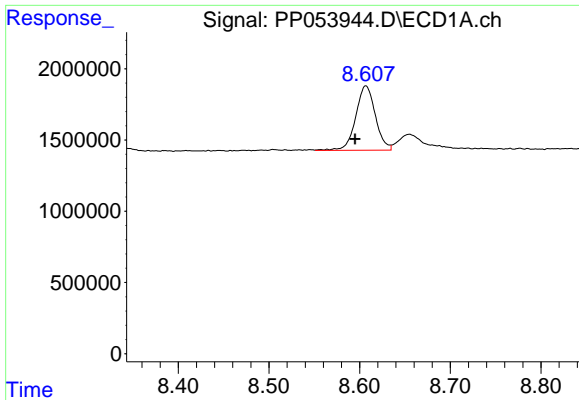
#40 AR-1262-5

R.T.: 9.337 min
 Delta R.T.: -0.007 min
 Response: 401590
 Conc: 5.68 ng/ml



#40 AR-1262-5

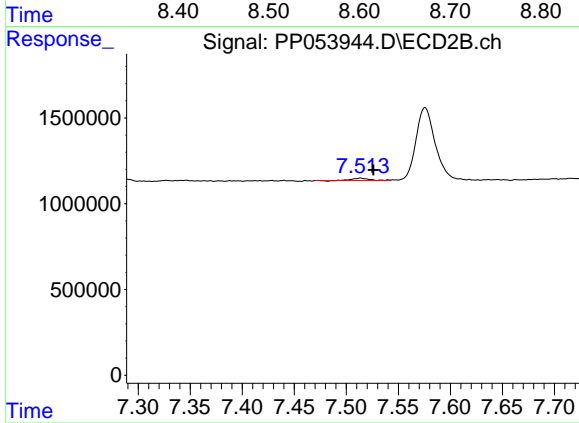
R.T.: 8.074 min
 Delta R.T.: -0.010 min
 Response: 218084
 Conc: 4.38 ng/ml



#41 AR-1268-1

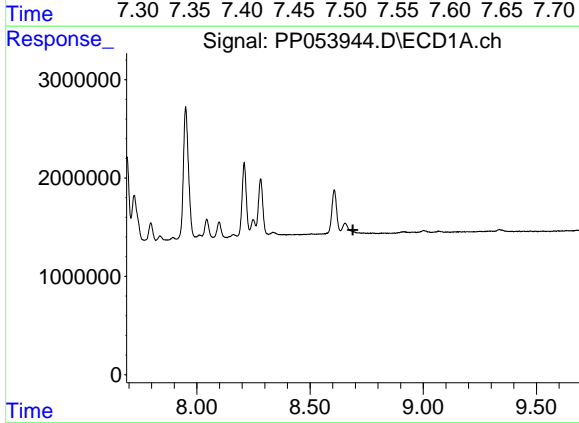
R.T.: 8.607 min
 Delta R.T.: 0.012 min
 Response: 6825489
 Conc: 27.97 ng/ml

Instrument :
 ECD_P
 ClientSampleId :



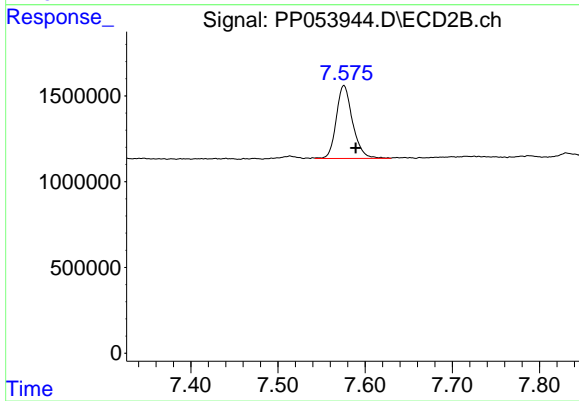
#41 AR-1268-1

R.T.: 7.514 min
 Delta R.T.: -0.012 min
 Response: 158231
 Conc: 0.87 ng/ml



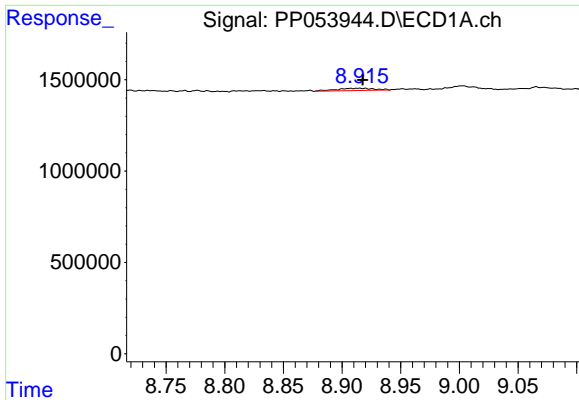
#42 AR-1268-2

R.T.: 0.000 min
 Exp R.T. : 8.689 min
 Response: 0
 Conc: N.D.



#42 AR-1268-2

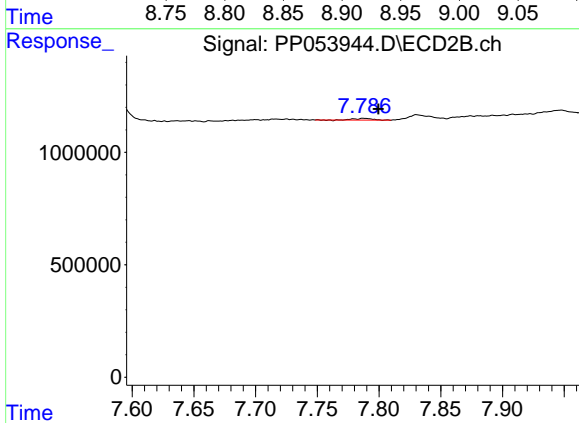
R.T.: 7.576 min
 Delta R.T.: -0.014 min
 Response: 5539746
 Conc: 32.46 ng/ml



#43 AR-1268-3

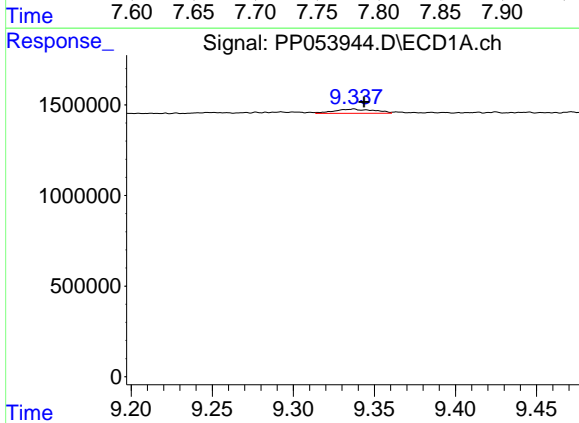
R.T.: 8.914 min
 Delta R.T.: -0.003 min
 Response: 271775
 Conc: 1.42 ng/ml

Instrument :
 ECD_P
 ClientSampleId :



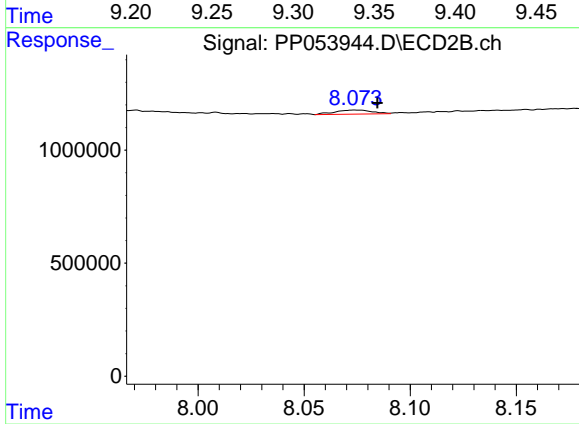
#43 AR-1268-3

R.T.: 7.788 min
 Delta R.T.: -0.012 min
 Response: 84247
 Conc: 0.57 ng/ml



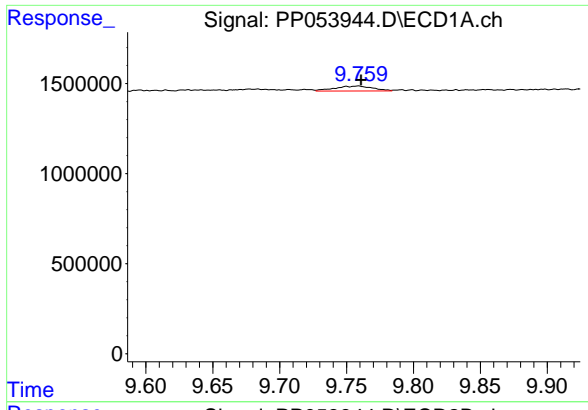
#44 AR-1268-4

R.T.: 9.337 min
 Delta R.T.: -0.006 min
 Response: 401590
 Conc: 5.22 ng/ml



#44 AR-1268-4

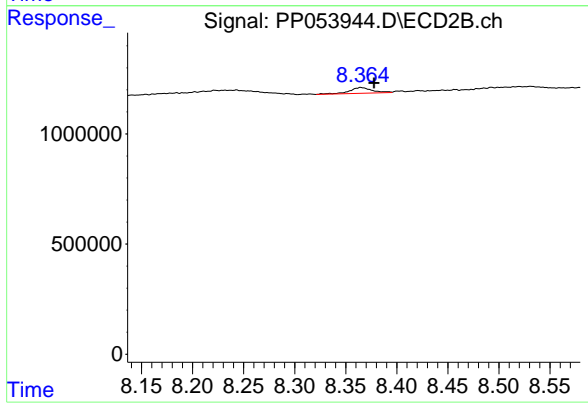
R.T.: 8.074 min
 Delta R.T.: -0.011 min
 Response: 218084
 Conc: 3.91 ng/ml



#45 AR-1268-5

R.T.: 9.759 min
 Delta R.T.: -0.002 min
 Response: 536040
 Conc: 0.91 ng/ml

Instrument :
 ECD_P
 ClientSampleId :



#45 AR-1268-5

R.T.: 8.365 min
 Delta R.T.: -0.013 min
 Response: 386831
 Conc: 0.82 ng/ml