

Data Path : Z:\pestpcbsrv\HPCHEM1\ECD_P\Data\PP122222\
 Data File : PP053950.D
 Signal(s) : Signal #1: ECD1A.ch Signal #2: ECD2B.ch
 Acq On : 22 Dec 2022 14:15
 Operator : YP\AJ
 Sample : N6163-01MSD
 Misc :
 ALS Vial : 11 Sample Multiplier: 1

Instrument :
 ECD_P
 ClientSampleId :

Integration File signal 1: autoint1.e
 Integration File signal 2: autoint2.e
 Quant Time: Dec 22 14:31:07 2022
 Quant Method : Z:\pestpcbsrv\HPCHEM1\ECD_P\methods\PP121322.M
 Quant Title : GC EXTRACTABLES
 QLast Update : Wed Dec 14 05:38:40 2022
 Response via : Initial Calibration
 Integrator: ChemStation

Volume Inj. : 2 µl
 Signal #1 Phase : ZB-MR1 Signal #2 Phase: ZB-MR2
 Signal #1 Info : 30Mx0.32mmx 0.50µ Signal #2 Info : 30M x 0.32mm x 0.25µm

Compound	RT#1	RT#2	Resp#1	Resp#2	ng/ml	ng/ml
System Monitoring Compounds						
1) SA Tetrachlo...	4.339	3.589	47871952	32077088	22.799	20.539
2) SA Decachlor...	10.100	8.623	36332170	28945129	21.400	20.723
Target Compounds						
3) L1 AR-1016-1	5.510	4.680	31182736	19729994	459.860	429.599
4) L1 AR-1016-2	5.534	4.699	44126686	28380898	442.992	452.950
5) L1 AR-1016-3	5.596	4.876	27598706	16028084	436.681	472.229
6) L1 AR-1016-4	5.694	4.918	22277497	12554456	449.574	421.311
7) L1 AR-1016-5	5.991	5.131	23561921	16956088	447.641	467.605
8) L2 AR-1221-1	4.546	3.803	12641845	3848760	490.717	198.776 #
9) L2 AR-1221-2	4.634	3.890	4447293	8311433	228.431	568.599 #
10) L2 AR-1221-3	4.711	3.966	17540826	14673811	301.826	329.890
11) L3 AR-1232-1	4.711	3.966	17540826	14673811	391.633	426.423
12) L3 AR-1232-2	5.243	4.699	19244161	28380898	748.116	950.903 #
13) L3 AR-1232-3	5.534	4.876	44126686	16028084	940.128	1011.647
14) L3 AR-1232-4	5.694	4.960	22277497	16556131	940.214	1071.412
15) L3 AR-1232-5	5.786	5.131	19663949	16956088	1066.224	1029.701
16) L4 AR-1242-1	5.510	4.680	31182736	19729994	595.308	557.132
17) L4 AR-1242-2	5.534	4.699	44126686	28380898	579.155	590.749
18) L4 AR-1242-3	5.596	4.876	27598706	16028084	563.298	614.790
19) L4 AR-1242-4	5.694	4.960	22277497	16556131	580.312	580.333
20) L4 AR-1242-5	6.435	5.486	3841147	15154695	94.178	496.497 #
21) L5 AR-1248-1	5.510	4.680	31182736	19729994	739.879	693.560
22) L5 AR-1248-2	5.786	4.918	19663949	12554456	311.137	303.477
23) L5 AR-1248-3	5.991	4.960	23561921	16556131	336.383	394.217
24) L5 AR-1248-4	6.396	5.131	4335928	16956088	61.479	352.413 #
25) L5 AR-1248-5	6.435	5.526	3841147	2429637	54.511	64.706
26) L6 AR-1254-1	6.369	5.486	19567074	15154695	252.503	231.428
27) L6 AR-1254-2	6.590	5.634	22864781	15751941	196.523	270.097 #
28) L6 AR-1254-3	6.959	6.057	20836194	29338823	177.893	333.502 #
29) L6 AR-1254-4	7.243	6.269	10766553	5264547	135.807	114.909
30) L6 AR-1254-5	7.663	6.689	87383270	55823915	896.009	716.299
31) L7 AR-1260-1	7.122	6.171	42239454	32544288	437.383	498.923
32) L7 AR-1260-2	7.378	6.359	68084175	38260562	616.306	508.074
33) L7 AR-1260-3	7.741	6.513	32021523	35120185	423.512	484.522
34) L7 AR-1260-4	7.966	6.988	41537444	24743159	442.571	456.024
35) L7 AR-1260-5	8.284	7.231	69762513	58217357	439.947	486.828
36) L8 AR-1262-1	7.741	6.781	32021523	14192219	267.501	397.924 #
37) L8 AR-1262-2	8.284	6.988	69762513	24743159	363.811	318.314
38) L8 AR-1262-3	8.607	7.516	47822424	11478122	345.123	182.180 #
39) L8 AR-1262-4	8.685	7.579	12021048	42241239	193.153	369.444 #
40) L8 AR-1262-5	9.343	8.075	18482354	13503547	261.551	271.068
41) L9 AR-1268-1	8.607	7.516	47822424	11478122	195.955	63.442 #

Data Path : Z:\pestpcbsrv\HPCHEM1\ECD_P\Data\PP122222\
 Data File : PP053950.D
 Signal(s) : Signal #1: ECD1A.ch Signal #2: ECD2B.ch
 Acq On : 22 Dec 2022 14:15
 Operator : YP\AJ
 Sample : N6163-01MSD
 Misc :
 ALS Vial : 11 Sample Multiplier: 1

Instrument :
 ECD_P
 ClientSampleId :

Integration File signal 1: autoint1.e
 Integration File signal 2: autoint2.e
 Quant Time: Dec 22 14:31:07 2022
 Quant Method : Z:\pestpcbsrv\HPCHEM1\ECD_P\methods\PP121322.M
 Quant Title : GC EXTRACTABLES
 QLast Update : Wed Dec 14 05:38:40 2022
 Response via : Initial Calibration
 Integrator: ChemStation

Volume Inj. : 2 µl
 Signal #1 Phase : ZB-MR1 Signal #2 Phase: ZB-MR2
 Signal #1 Info : 30Mx0.32mmx 0.50µ Signal #2 Info : 30M x 0.32mm x 0.25µm

	Compound	RT#1	RT#2	Resp#1	Resp#2	ng/ml	ng/ml
42)	L9 AR-1268-2	8.685	7.579	12021048	42241239	52.894	247.536 #
43)	L9 AR-1268-3	8.917	7.790	1449304	992736	7.563	6.721
44)	L9 AR-1268-4	9.343	8.075	18482354	13503547	240.101	242.298
45)	L9 AR-1268-5	9.759	8.366	6752385	4654828	11.483	9.846

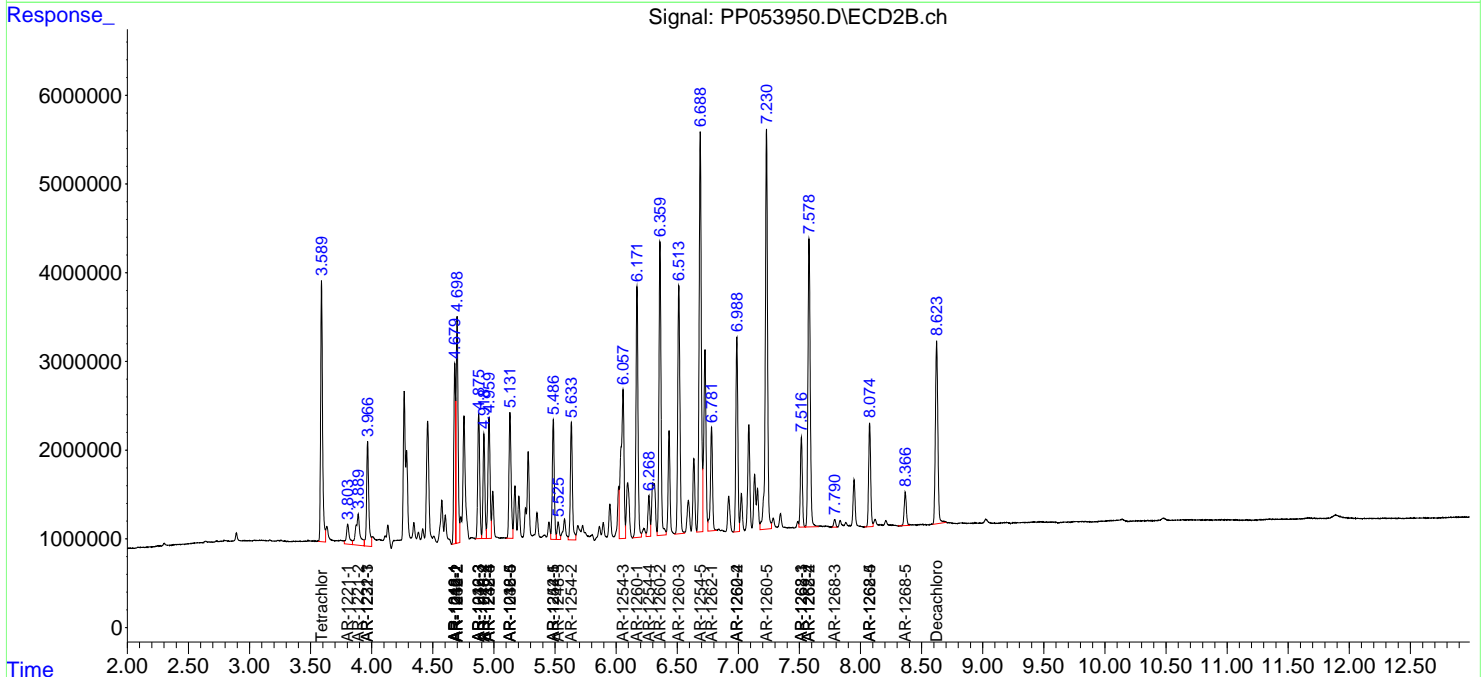
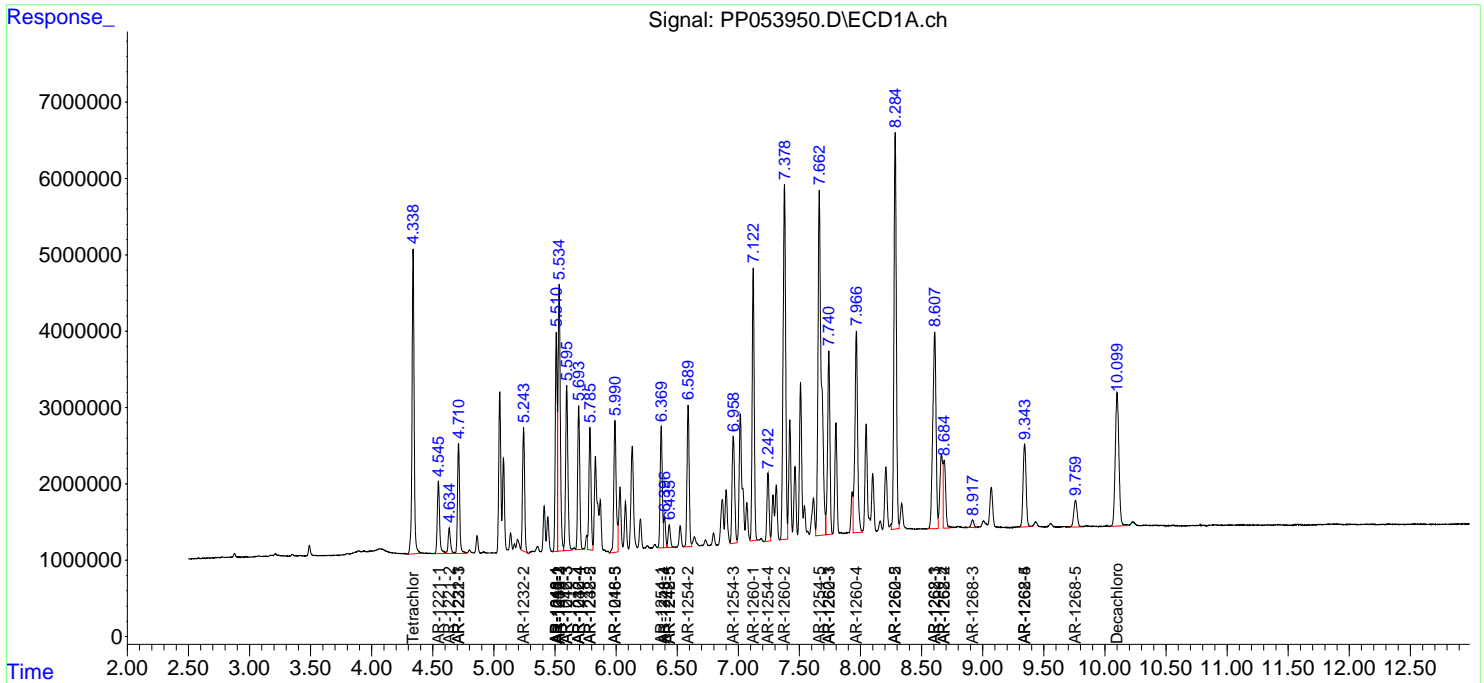
(f)=RT Delta > 1/2 Window (#)=Amounts differ by > 25% (m)=manual int.

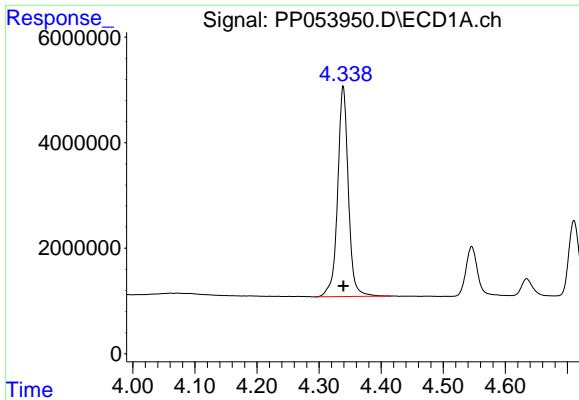
Data Path : Z:\pestpcbsrv\HPCHEM1\ECD_P\Data\PP122222\
 Data File : PP053950.D
 Signal(s) : Signal #1: ECD1A.ch Signal #2: ECD2B.ch
 Acq On : 22 Dec 2022 14:15
 Operator : YP\AJ
 Sample : N6163-01MSD
 Misc :
 ALS Vial : 11 Sample Multiplier: 1

Instrument :
 ECD_P
 ClientSampleId :

Integration File signal 1: autoint1.e
 Integration File signal 2: autoint2.e
 Quant Time: Dec 22 14:31:07 2022
 Quant Method : Z:\pestpcbsrv\HPCHEM1\ECD_P\methods\PP121322.M
 Quant Title : GC EXTRACTABLES
 QLast Update : Wed Dec 14 05:38:40 2022
 Response via : Initial Calibration
 Integrator: ChemStation

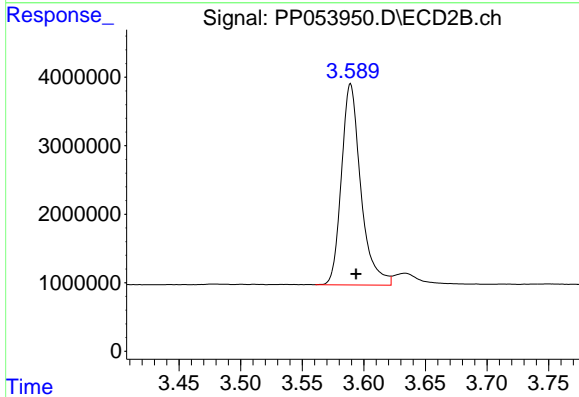
Volume Inj. : 2 µl
 Signal #1 Phase : ZB-MR1 Signal #2 Phase: ZB-MR2
 Signal #1 Info : 30Mx0.32mmx 0.50µ Signal #2 Info : 30M x 0.32mm x 0.25µm



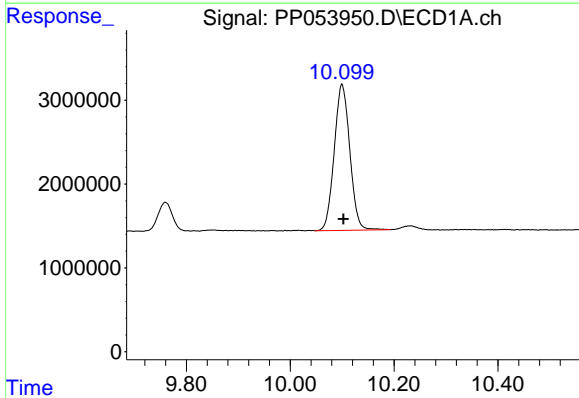


#1 Tetrachloro-m-xylene
R.T.: 4.339 min
Delta R.T.: 0.000 min
Response: 47871952
Conc: 22.80 ng/ml

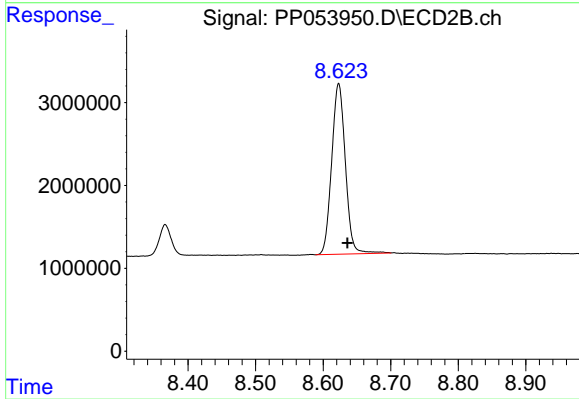
Instrument :
ECD_P
ClientSampleId :



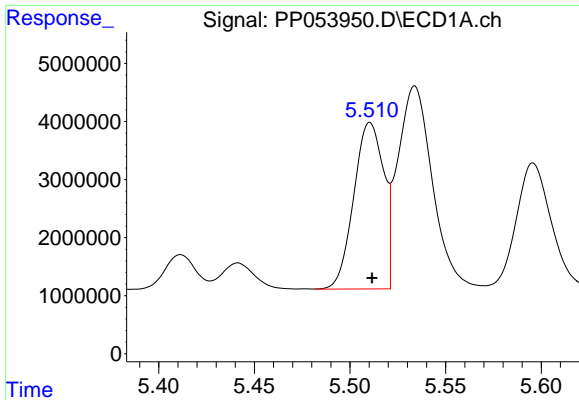
#1 Tetrachloro-m-xylene
R.T.: 3.589 min
Delta R.T.: -0.004 min
Response: 32077088
Conc: 20.54 ng/ml



#2 Decachlorobiphenyl
R.T.: 10.100 min
Delta R.T.: -0.003 min
Response: 36332170
Conc: 21.40 ng/ml



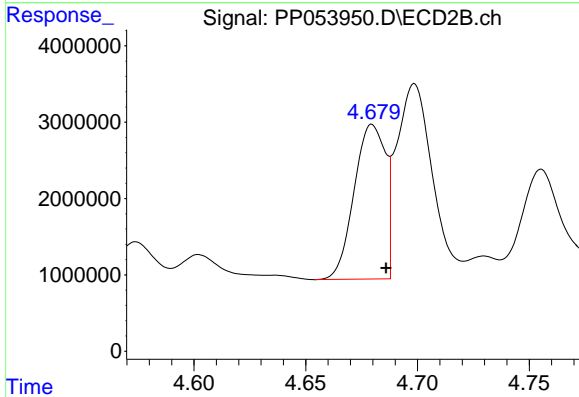
#2 Decachlorobiphenyl
R.T.: 8.623 min
Delta R.T.: -0.013 min
Response: 28945129
Conc: 20.72 ng/ml



#3 AR-1016-1

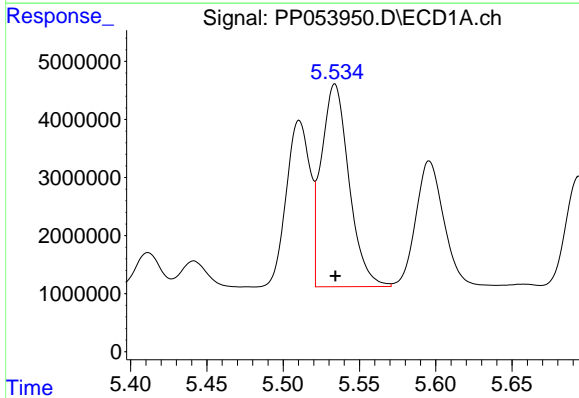
R.T.: 5.510 min
 Delta R.T.: -0.001 min
 Response: 31182736
 Conc: 459.86 ng/ml

Instrument :
 ECD_P
 ClientSampleId :



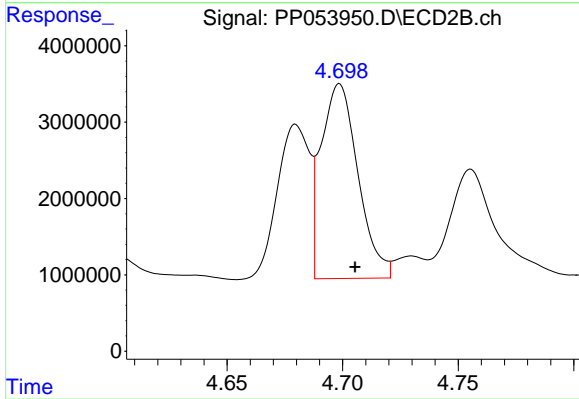
#3 AR-1016-1

R.T.: 4.680 min
 Delta R.T.: -0.006 min
 Response: 19729994
 Conc: 429.60 ng/ml



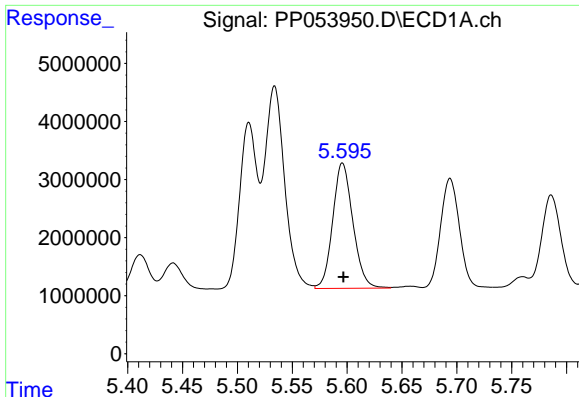
#4 AR-1016-2

R.T.: 5.534 min
 Delta R.T.: 0.000 min
 Response: 44126686
 Conc: 442.99 ng/ml



#4 AR-1016-2

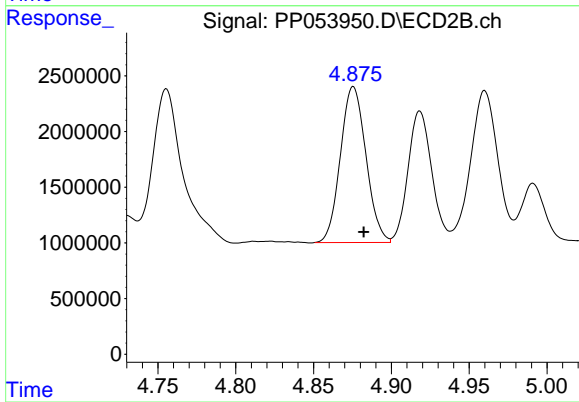
R.T.: 4.699 min
 Delta R.T.: -0.007 min
 Response: 28380898
 Conc: 452.95 ng/ml



#5 AR-1016-3

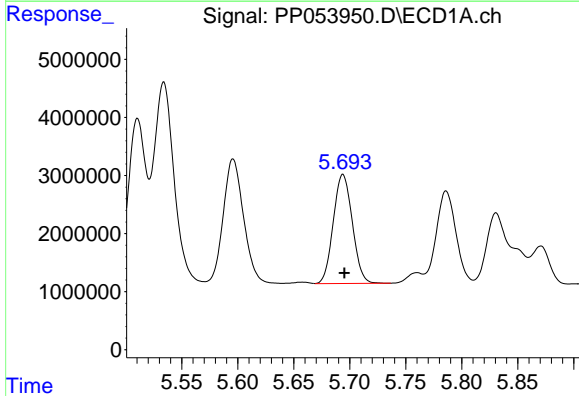
R.T.: 5.596 min
 Delta R.T.: 0.000 min
 Response: 27598706
 Conc: 436.68 ng/ml

Instrument :
 ECD_P
 ClientSampleId :



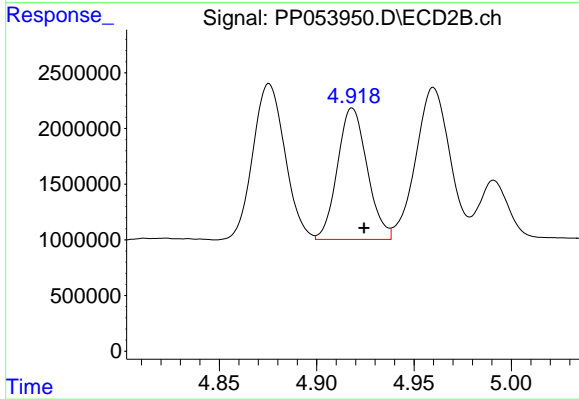
#5 AR-1016-3

R.T.: 4.876 min
 Delta R.T.: -0.007 min
 Response: 16028084
 Conc: 472.23 ng/ml



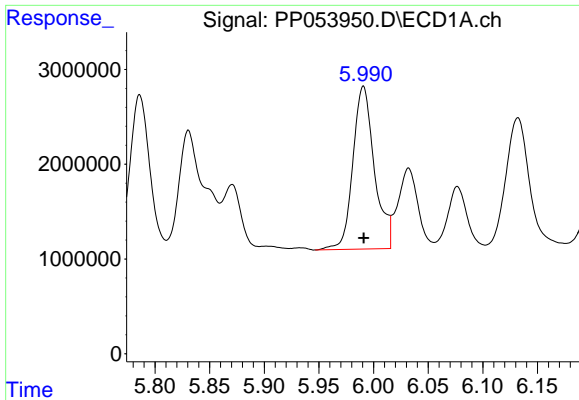
#6 AR-1016-4

R.T.: 5.694 min
 Delta R.T.: -0.001 min
 Response: 22277497
 Conc: 449.57 ng/ml



#6 AR-1016-4

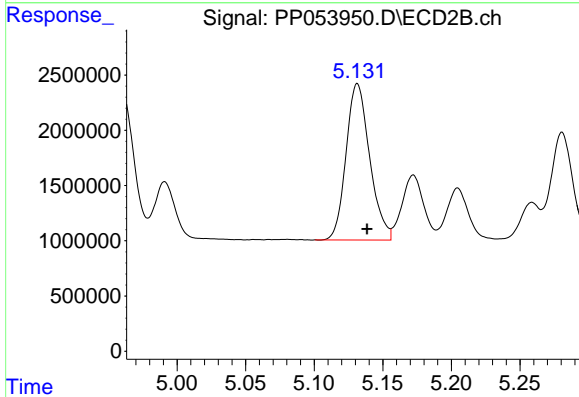
R.T.: 4.918 min
 Delta R.T.: -0.006 min
 Response: 12554456
 Conc: 421.31 ng/ml



#7 AR-1016-5

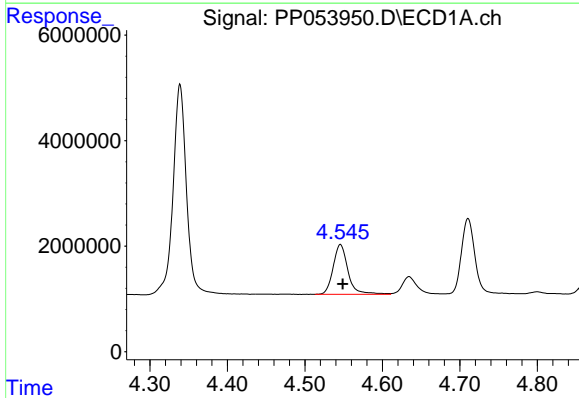
R.T.: 5.991 min
 Delta R.T.: 0.000 min
 Response: 23561921
 Conc: 447.64 ng/ml

Instrument :
 ECD_P
 ClientSampleId :



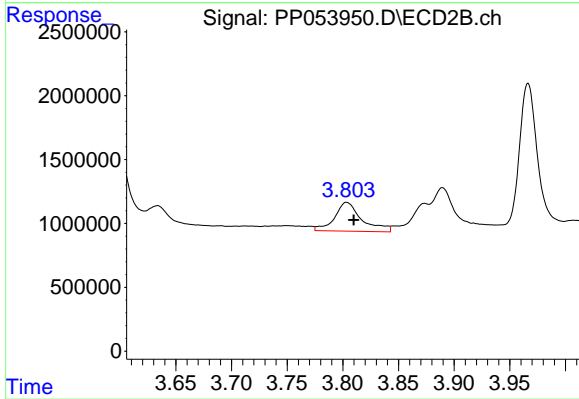
#7 AR-1016-5

R.T.: 5.131 min
 Delta R.T.: -0.007 min
 Response: 16956088
 Conc: 467.61 ng/ml



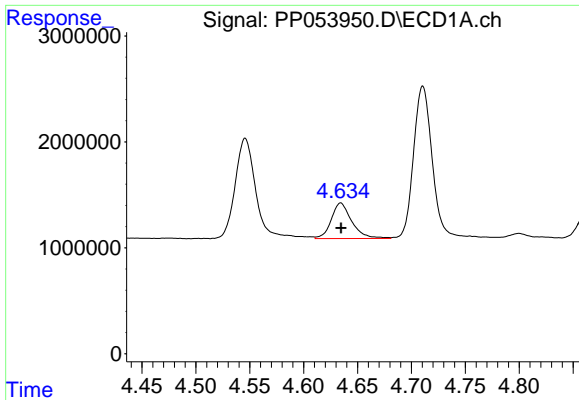
#8 AR-1221-1

R.T.: 4.546 min
 Delta R.T.: -0.003 min
 Response: 12641845
 Conc: 490.72 ng/ml



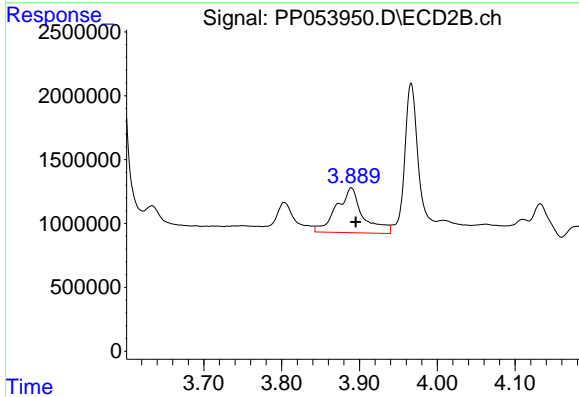
#8 AR-1221-1

R.T.: 3.803 min
 Delta R.T.: -0.006 min
 Response: 3848760
 Conc: 198.78 ng/ml

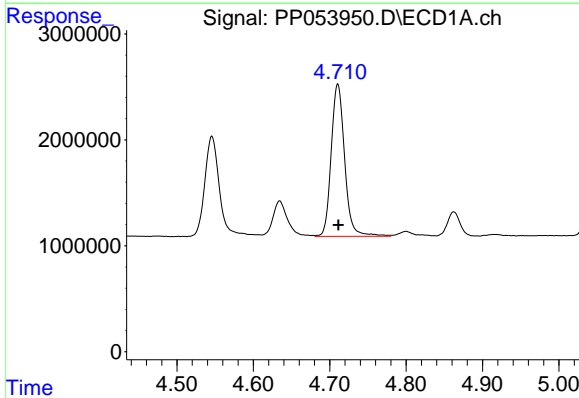


#9 AR-1221-2
 R.T.: 4.634 min
 Delta R.T.: 0.000 min
 Response: 4447293
 Conc: 228.43 ng/ml

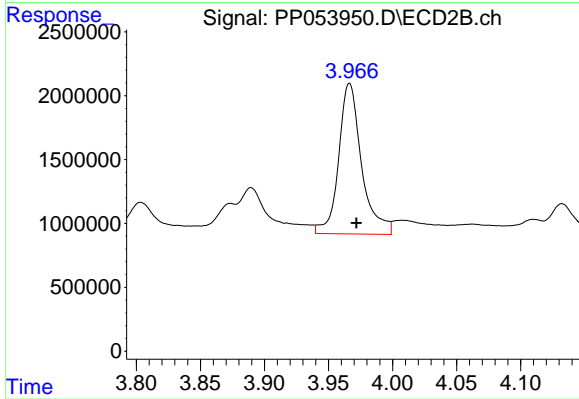
Instrument :
 ECD_P
 ClientSampleId :



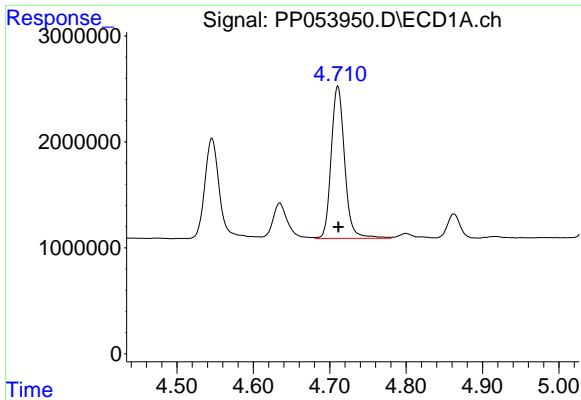
#9 AR-1221-2
 R.T.: 3.890 min
 Delta R.T.: -0.005 min
 Response: 8311433
 Conc: 568.60 ng/ml



#10 AR-1221-3
 R.T.: 4.711 min
 Delta R.T.: 0.000 min
 Response: 17540826
 Conc: 301.83 ng/ml



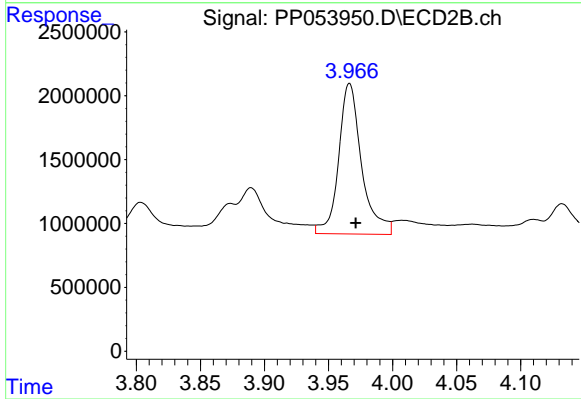
#10 AR-1221-3
 R.T.: 3.966 min
 Delta R.T.: -0.005 min
 Response: 14673811
 Conc: 329.89 ng/ml



#11 AR-1232-1

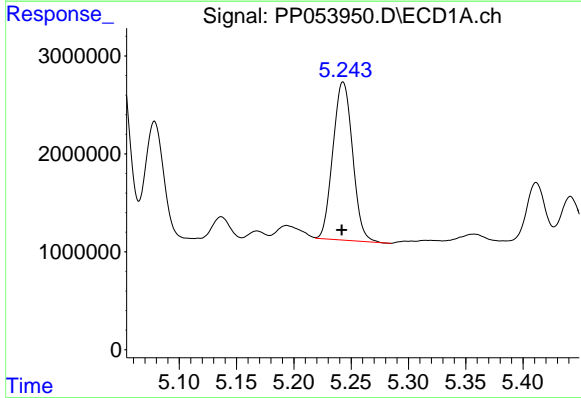
R.T.: 4.711 min
 Delta R.T.: 0.000 min
 Response: 17540826
 Conc: 391.63 ng/ml

Instrument :
 ECD_P
 ClientSampleId :



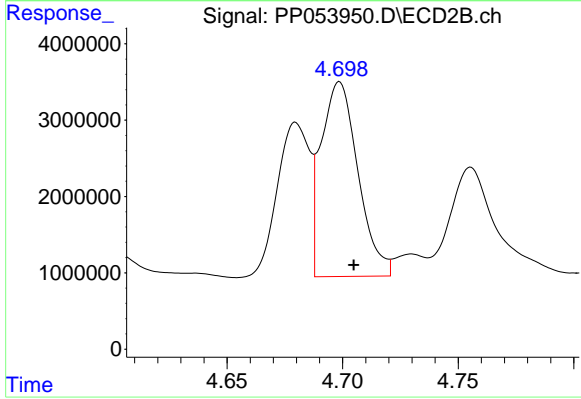
#11 AR-1232-1

R.T.: 3.966 min
 Delta R.T.: -0.005 min
 Response: 14673811
 Conc: 426.42 ng/ml



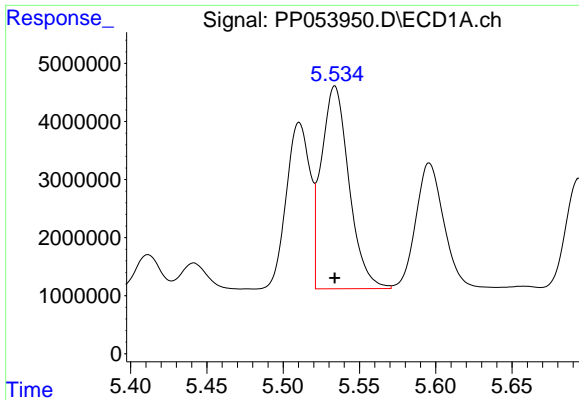
#12 AR-1232-2

R.T.: 5.243 min
 Delta R.T.: 0.001 min
 Response: 19244161
 Conc: 748.12 ng/ml



#12 AR-1232-2

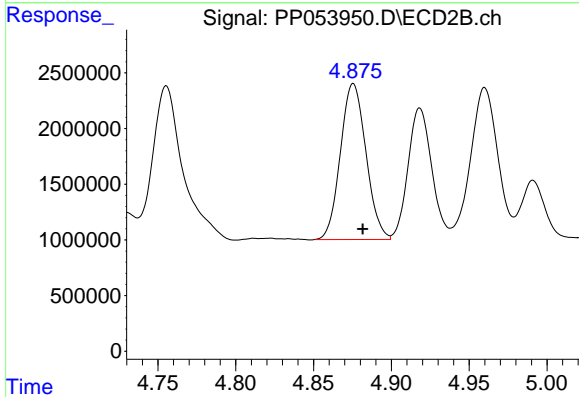
R.T.: 4.699 min
 Delta R.T.: -0.006 min
 Response: 28380898
 Conc: 950.90 ng/ml



#13 AR-1232-3

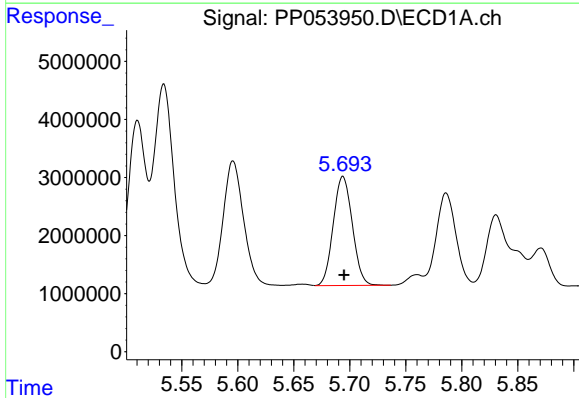
R.T.: 5.534 min
 Delta R.T.: 0.000 min
 Response: 44126686
 Conc: 940.13 ng/ml

Instrument :
 ECD_P
 ClientSampleId :



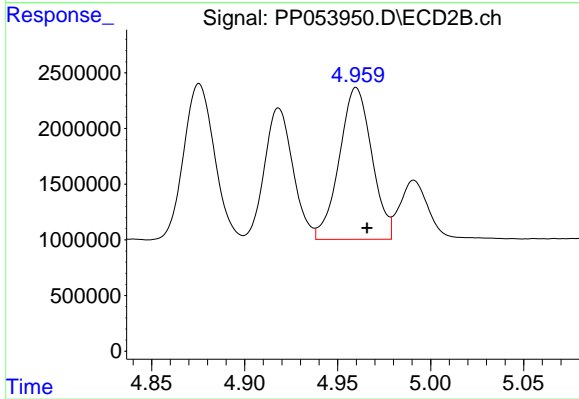
#13 AR-1232-3

R.T.: 4.876 min
 Delta R.T.: -0.006 min
 Response: 16028084
 Conc: 1011.65 ng/ml



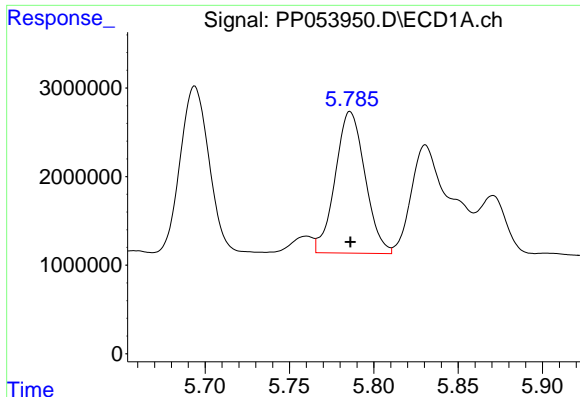
#14 AR-1232-4

R.T.: 5.694 min
 Delta R.T.: 0.000 min
 Response: 22277497
 Conc: 940.21 ng/ml



#14 AR-1232-4

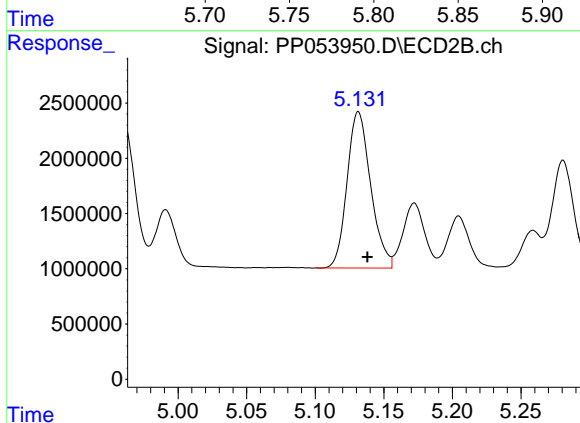
R.T.: 4.960 min
 Delta R.T.: -0.006 min
 Response: 16556131
 Conc: 1071.41 ng/ml



#15 AR-1232-5

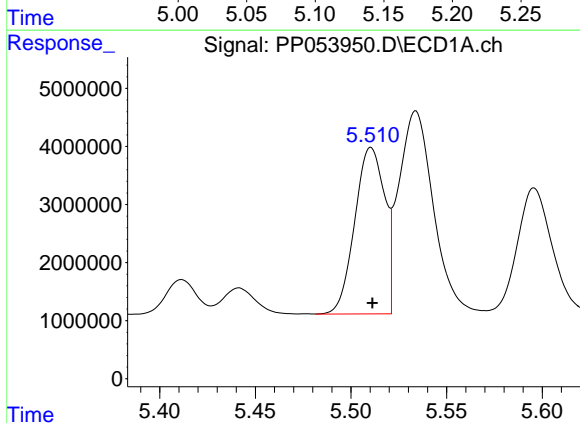
R.T.: 5.786 min
 Delta R.T.: 0.000 min
 Response: 19663949
 Conc: 1066.22 ng/ml

Instrument :
 ECD_P
 ClientSampleId :



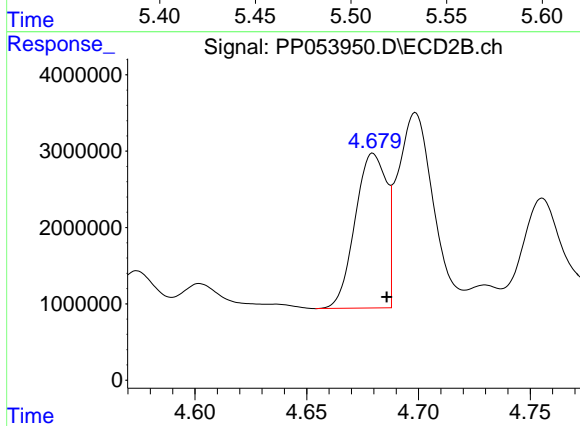
#15 AR-1232-5

R.T.: 5.131 min
 Delta R.T.: -0.007 min
 Response: 16956088
 Conc: 1029.70 ng/ml



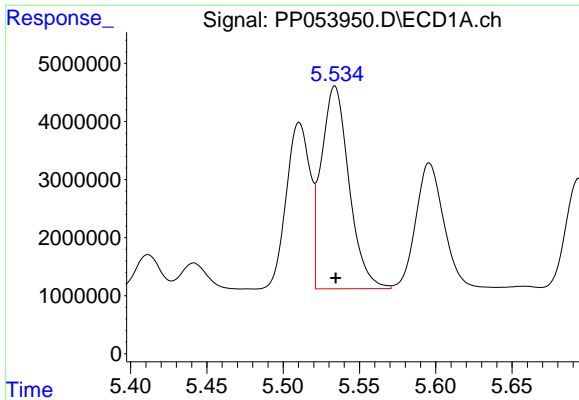
#16 AR-1242-1

R.T.: 5.510 min
 Delta R.T.: 0.000 min
 Response: 31182736
 Conc: 595.31 ng/ml



#16 AR-1242-1

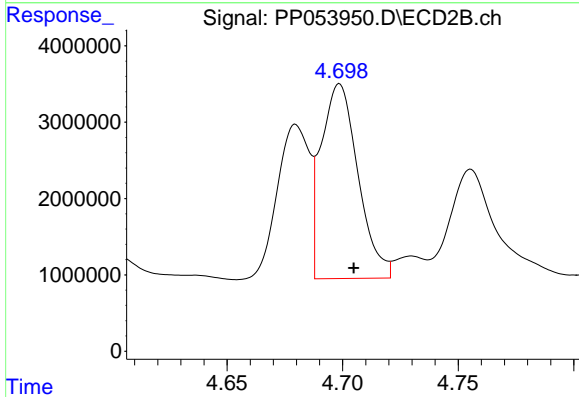
R.T.: 4.680 min
 Delta R.T.: -0.006 min
 Response: 19729994
 Conc: 557.13 ng/ml



#17 AR-1242-2

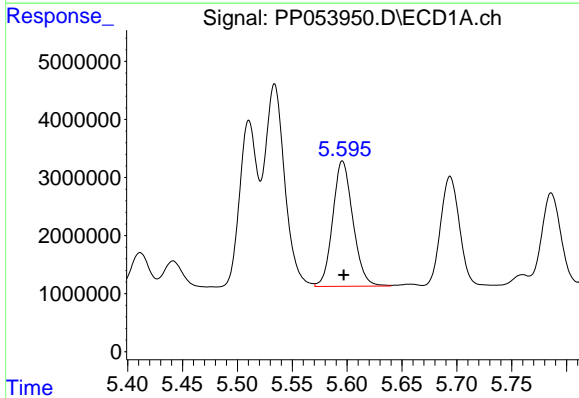
R.T.: 5.534 min
 Delta R.T.: 0.000 min
 Response: 44126686
 Conc: 579.16 ng/ml

Instrument :
 ECD_P
 ClientSampleId :



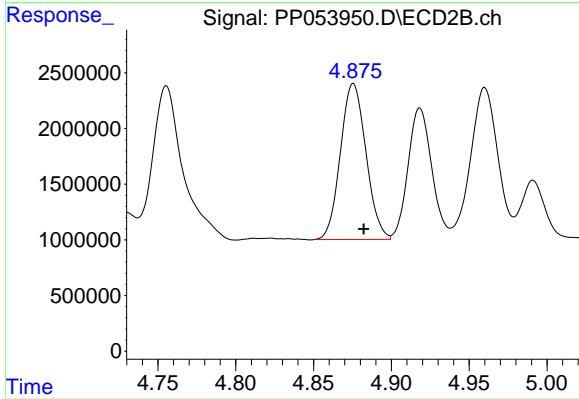
#17 AR-1242-2

R.T.: 4.699 min
 Delta R.T.: -0.006 min
 Response: 28380898
 Conc: 590.75 ng/ml



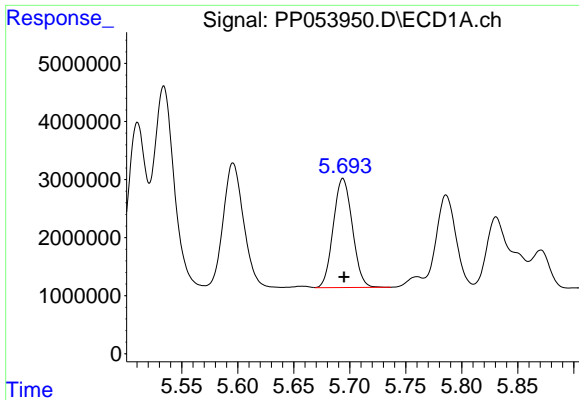
#18 AR-1242-3

R.T.: 5.596 min
 Delta R.T.: -0.001 min
 Response: 27598706
 Conc: 563.30 ng/ml



#18 AR-1242-3

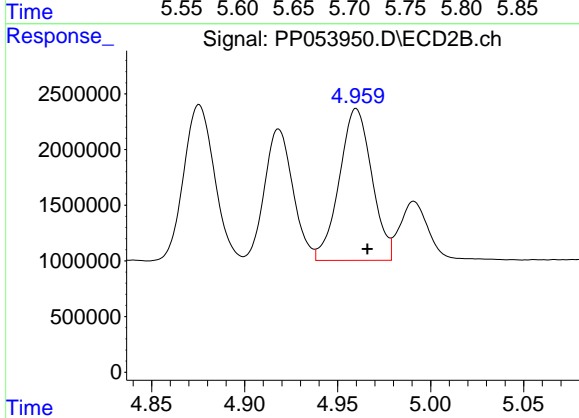
R.T.: 4.876 min
 Delta R.T.: -0.007 min
 Response: 16028084
 Conc: 614.79 ng/ml



#19 AR-1242-4

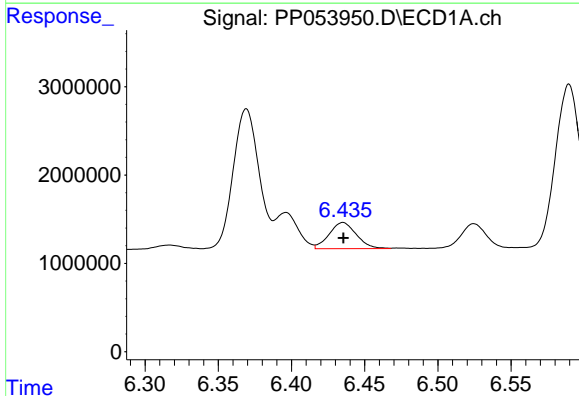
R.T.: 5.694 min
Delta R.T.: -0.001 min
Response: 22277497
Conc: 580.31 ng/ml

Instrument :
ECD_P
ClientSampleId :



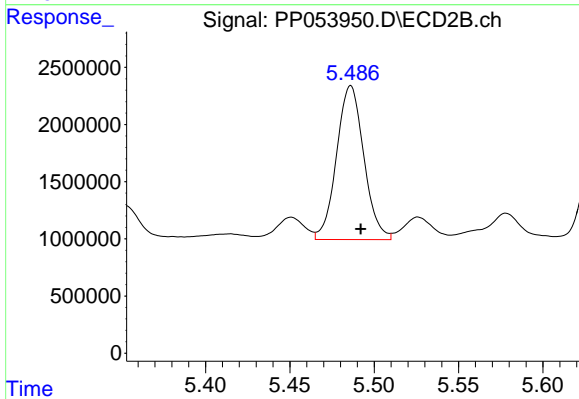
#19 AR-1242-4

R.T.: 4.960 min
Delta R.T.: -0.006 min
Response: 16556131
Conc: 580.33 ng/ml



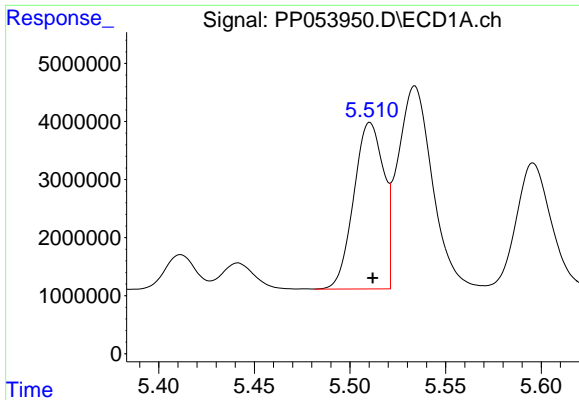
#20 AR-1242-5

R.T.: 6.435 min
Delta R.T.: 0.000 min
Response: 3841147
Conc: 94.18 ng/ml



#20 AR-1242-5

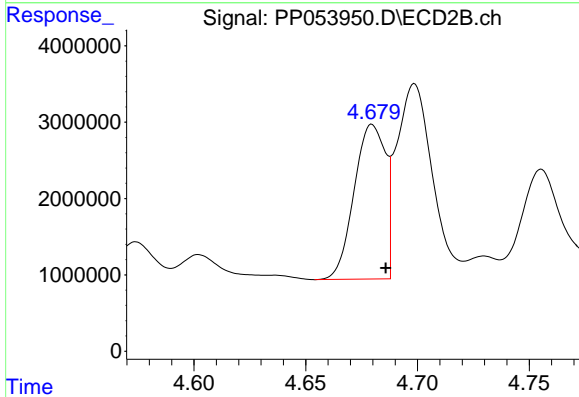
R.T.: 5.486 min
Delta R.T.: -0.006 min
Response: 15154695
Conc: 496.50 ng/ml



#21 AR-1248-1

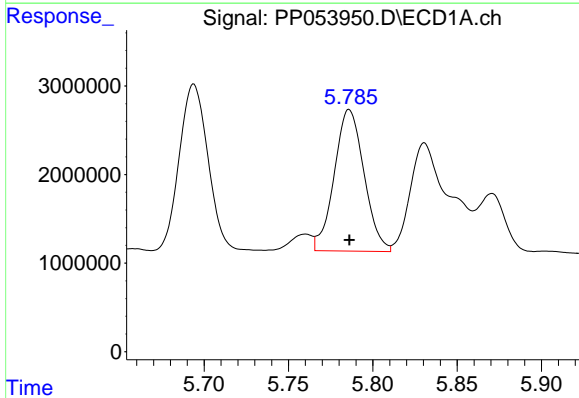
R.T.: 5.510 min
 Delta R.T.: -0.001 min
 Response: 31182736
 Conc: 739.88 ng/ml

Instrument :
 ECD_P
 ClientSampleId :



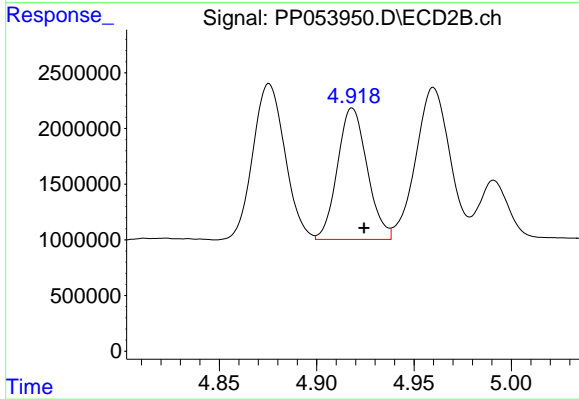
#21 AR-1248-1

R.T.: 4.680 min
 Delta R.T.: -0.006 min
 Response: 19729994
 Conc: 693.56 ng/ml



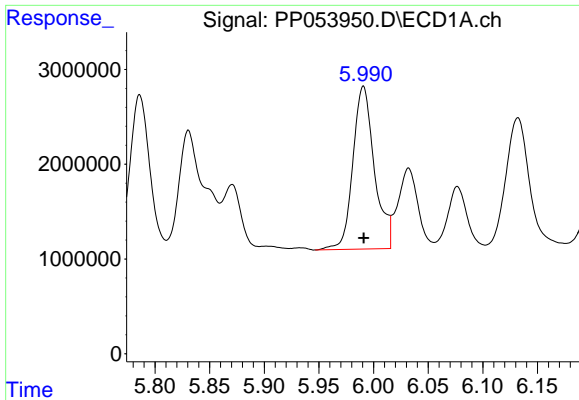
#22 AR-1248-2

R.T.: 5.786 min
 Delta R.T.: 0.000 min
 Response: 19663949
 Conc: 311.14 ng/ml



#22 AR-1248-2

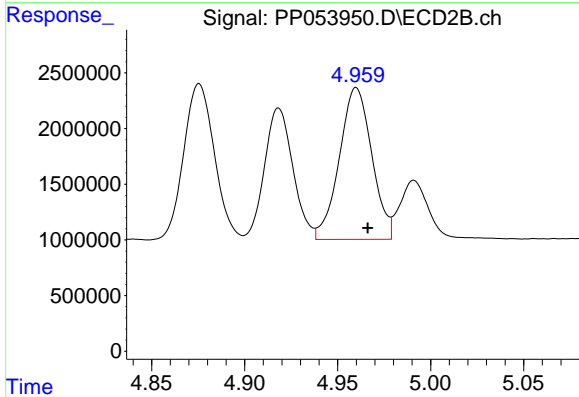
R.T.: 4.918 min
 Delta R.T.: -0.006 min
 Response: 12554456
 Conc: 303.48 ng/ml



#23 AR-1248-3

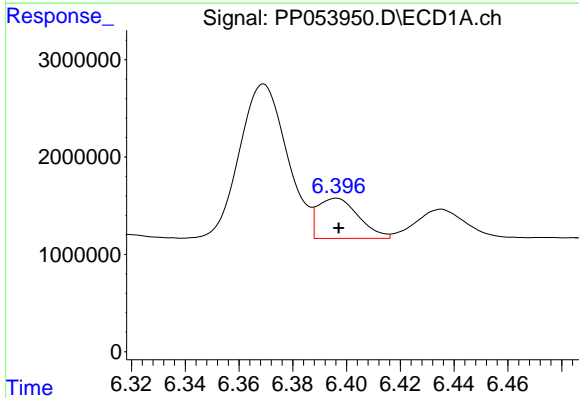
R.T.: 5.991 min
 Delta R.T.: 0.000 min
 Response: 23561921
 Conc: 336.38 ng/ml

Instrument :
 ECD_P
 ClientSampleId :



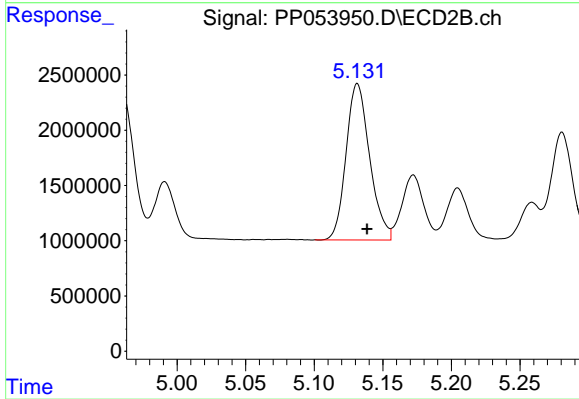
#23 AR-1248-3

R.T.: 4.960 min
 Delta R.T.: -0.006 min
 Response: 16556131
 Conc: 394.22 ng/ml



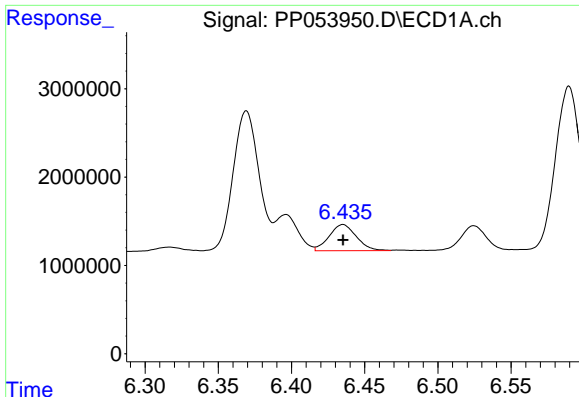
#24 AR-1248-4

R.T.: 6.396 min
 Delta R.T.: 0.000 min
 Response: 4335928
 Conc: 61.48 ng/ml



#24 AR-1248-4

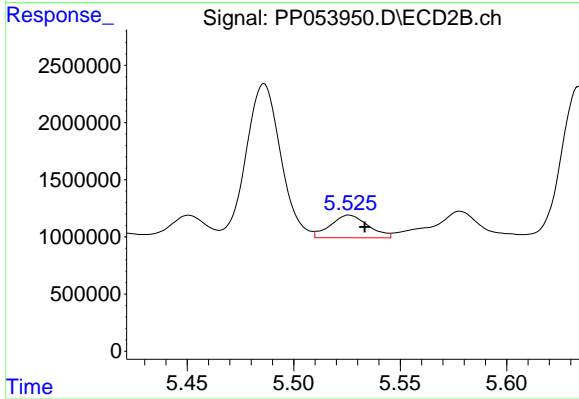
R.T.: 5.131 min
 Delta R.T.: -0.007 min
 Response: 16956088
 Conc: 352.41 ng/ml



#25 AR-1248-5

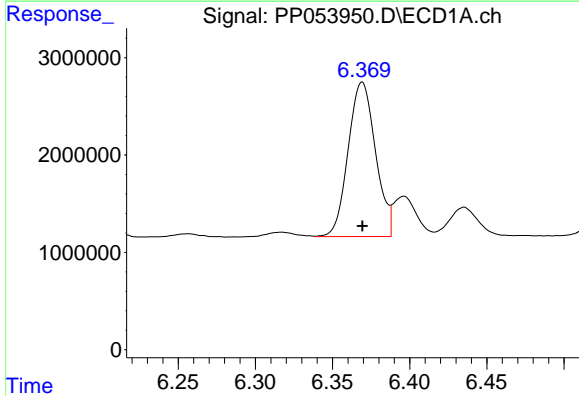
R.T.: 6.435 min
 Delta R.T.: 0.000 min
 Response: 3841147
 Conc: 54.51 ng/ml

Instrument :
 ECD_P
 ClientSampleId :



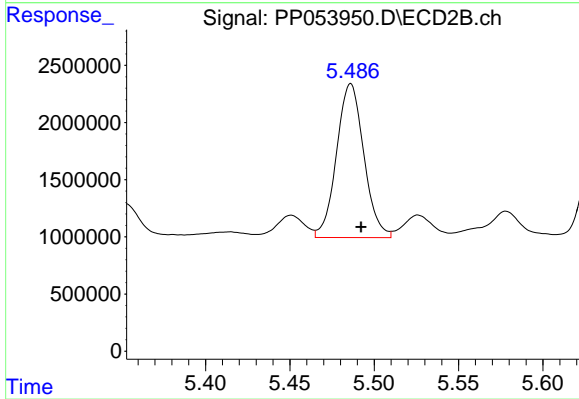
#25 AR-1248-5

R.T.: 5.526 min
 Delta R.T.: -0.007 min
 Response: 2429637
 Conc: 64.71 ng/ml



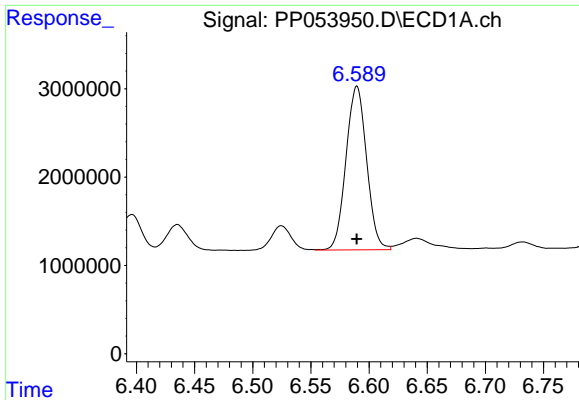
#26 AR-1254-1

R.T.: 6.369 min
 Delta R.T.: 0.000 min
 Response: 19567074
 Conc: 252.50 ng/ml



#26 AR-1254-1

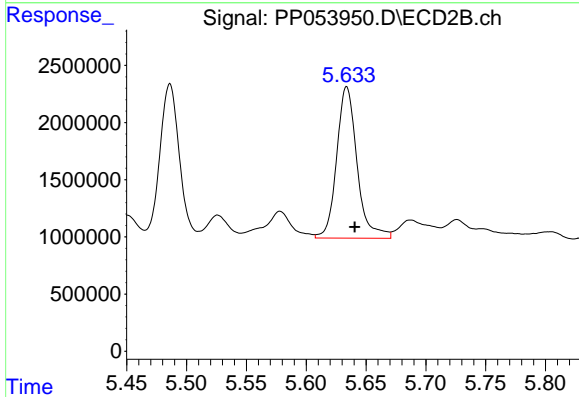
R.T.: 5.486 min
 Delta R.T.: -0.006 min
 Response: 15154695
 Conc: 231.43 ng/ml



#27 AR-1254-2

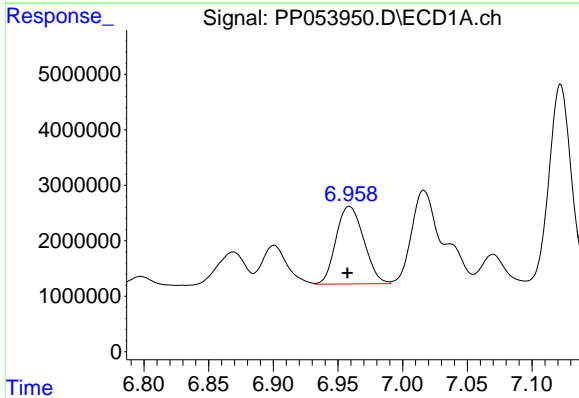
R.T.: 6.590 min
 Delta R.T.: 0.000 min
 Response: 22864781
 Conc: 196.52 ng/ml

Instrument :
 ECD_P
 ClientSampleId :



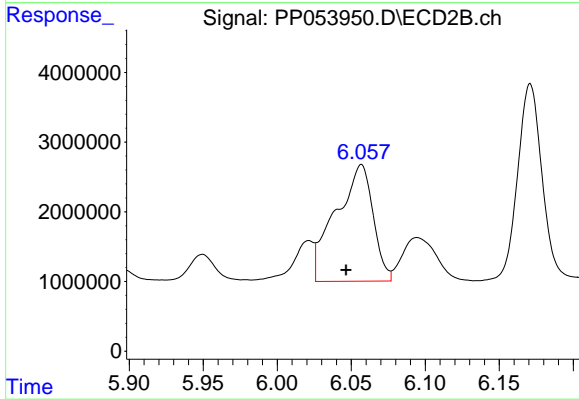
#27 AR-1254-2

R.T.: 5.634 min
 Delta R.T.: -0.007 min
 Response: 15751941
 Conc: 270.10 ng/ml



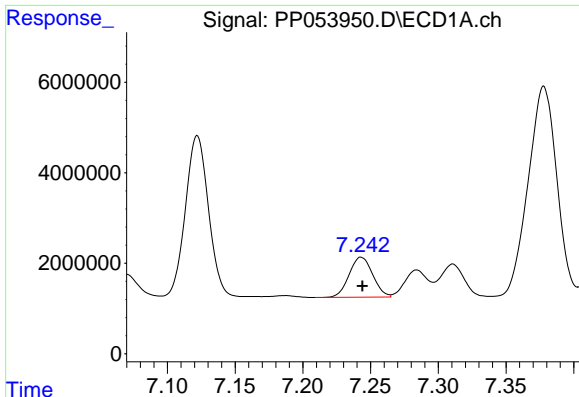
#28 AR-1254-3

R.T.: 6.959 min
 Delta R.T.: 0.002 min
 Response: 20836194
 Conc: 177.89 ng/ml



#28 AR-1254-3

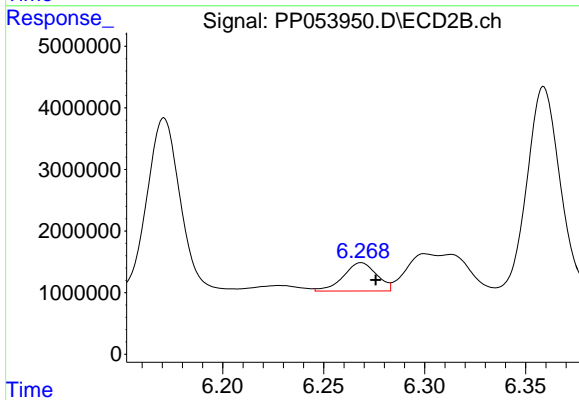
R.T.: 6.057 min
 Delta R.T.: 0.010 min
 Response: 29338823
 Conc: 333.50 ng/ml



#29 AR-1254-4

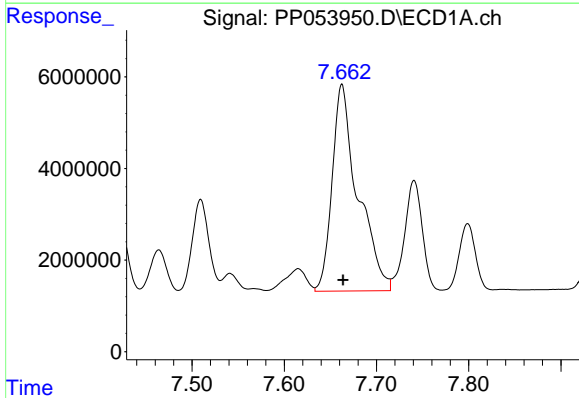
R.T.: 7.243 min
 Delta R.T.: 0.000 min
 Response: 10766553
 Conc: 135.81 ng/ml

Instrument :
 ECD_P
 ClientSampleId :



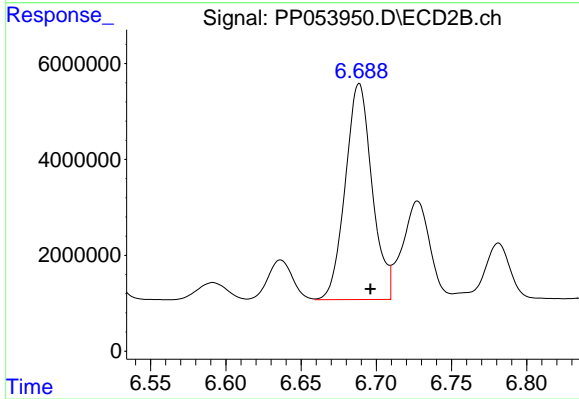
#29 AR-1254-4

R.T.: 6.269 min
 Delta R.T.: -0.007 min
 Response: 5264547
 Conc: 114.91 ng/ml



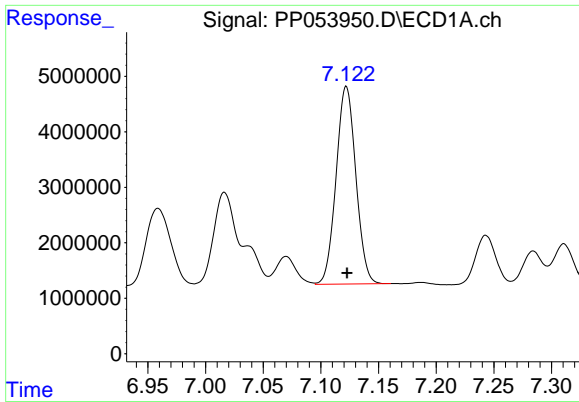
#30 AR-1254-5

R.T.: 7.663 min
 Delta R.T.: -0.001 min
 Response: 87383270
 Conc: 896.01 ng/ml



#30 AR-1254-5

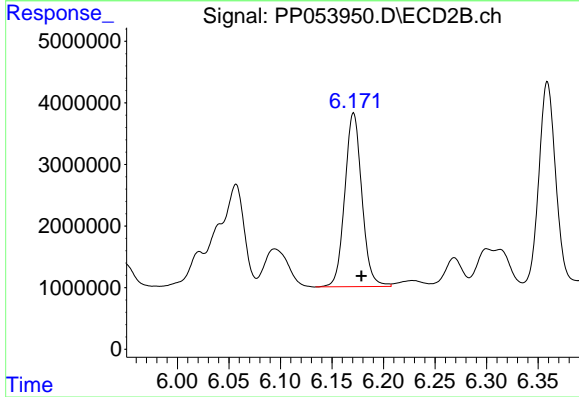
R.T.: 6.689 min
 Delta R.T.: -0.007 min
 Response: 55823915
 Conc: 716.30 ng/ml



#31 AR-1260-1

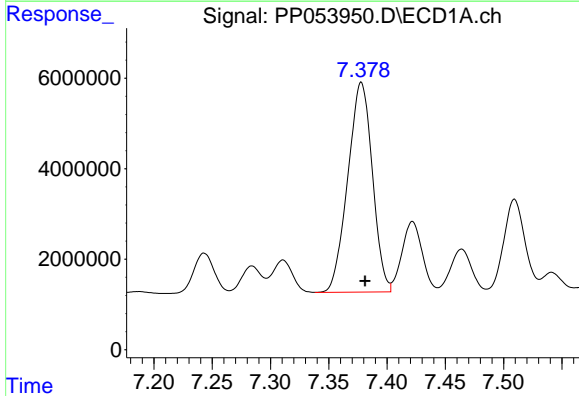
R.T.: 7.122 min
 Delta R.T.: 0.000 min
 Response: 42239454
 Conc: 437.38 ng/ml

Instrument :
 ECD_P
 ClientSampleId :



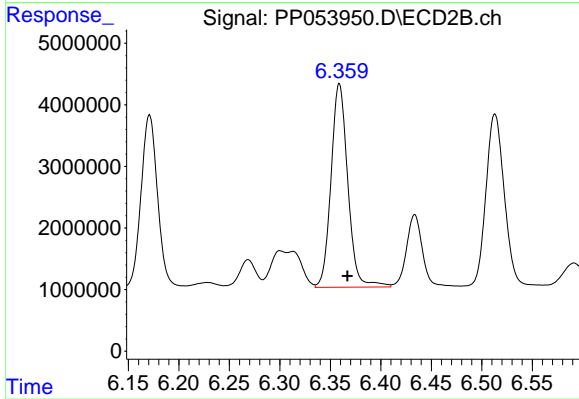
#31 AR-1260-1

R.T.: 6.171 min
 Delta R.T.: -0.008 min
 Response: 32544288
 Conc: 498.92 ng/ml



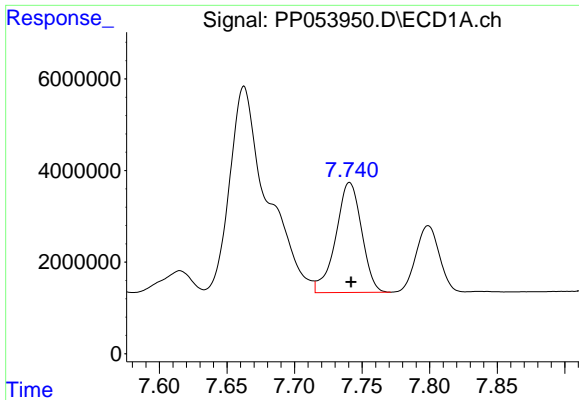
#32 AR-1260-2

R.T.: 7.378 min
 Delta R.T.: -0.003 min
 Response: 68084175
 Conc: 616.31 ng/ml



#32 AR-1260-2

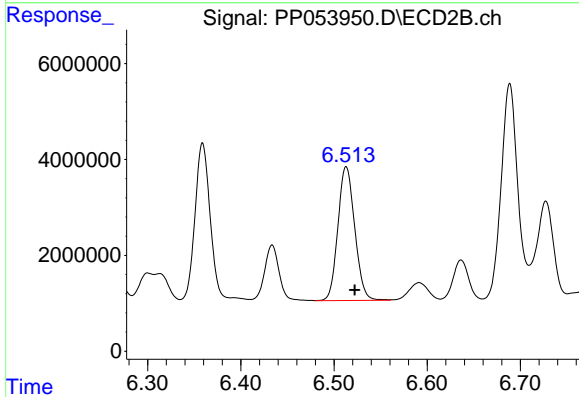
R.T.: 6.359 min
 Delta R.T.: -0.008 min
 Response: 38260562
 Conc: 508.07 ng/ml



#33 AR-1260-3

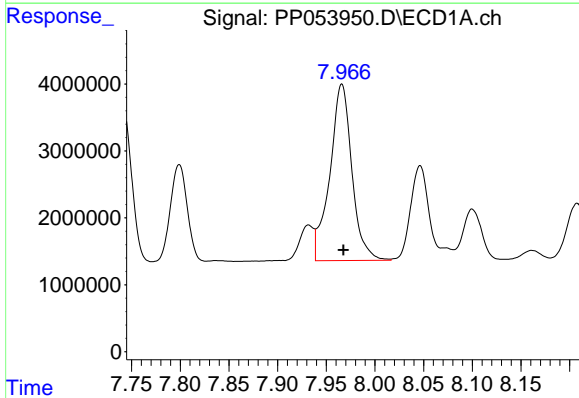
R.T.: 7.741 min
 Delta R.T.: 0.000 min
 Response: 32021523
 Conc: 423.51 ng/ml

Instrument :
 ECD_P
 ClientSampleId :



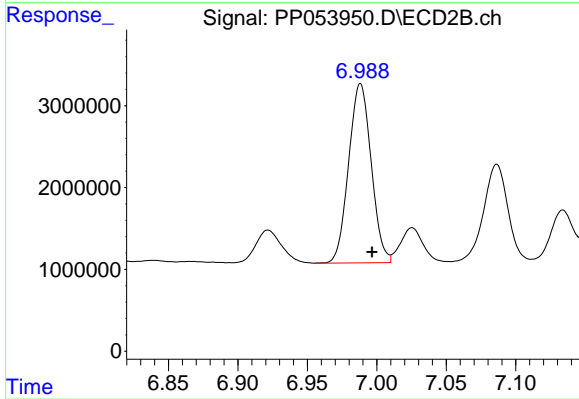
#33 AR-1260-3

R.T.: 6.513 min
 Delta R.T.: -0.009 min
 Response: 35120185
 Conc: 484.52 ng/ml



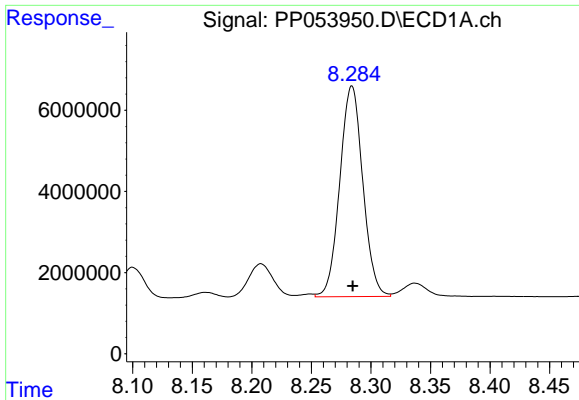
#34 AR-1260-4

R.T.: 7.966 min
 Delta R.T.: -0.002 min
 Response: 41537444
 Conc: 442.57 ng/ml



#34 AR-1260-4

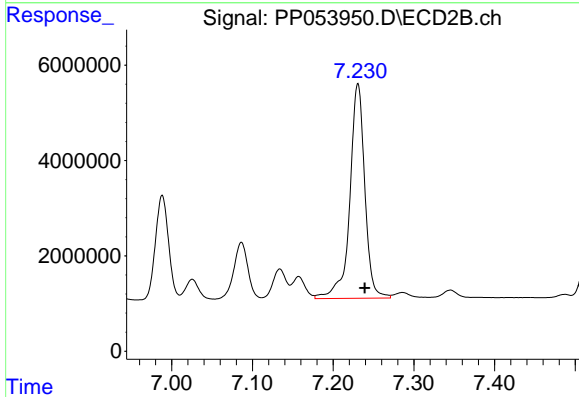
R.T.: 6.988 min
 Delta R.T.: -0.008 min
 Response: 24743159
 Conc: 456.02 ng/ml



#35 AR-1260-5

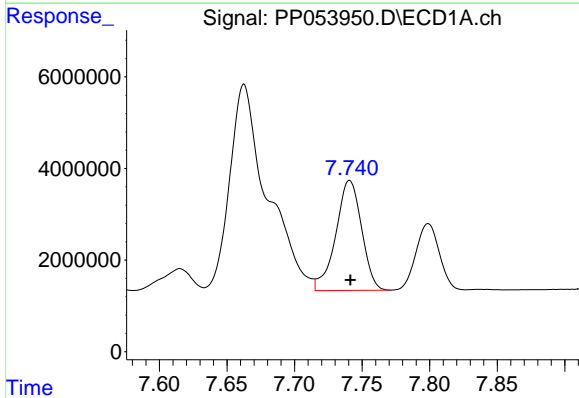
R.T.: 8.284 min
 Delta R.T.: 0.000 min
 Response: 69762513
 Conc: 439.95 ng/ml

Instrument :
 ECD_P
 ClientSampleId :



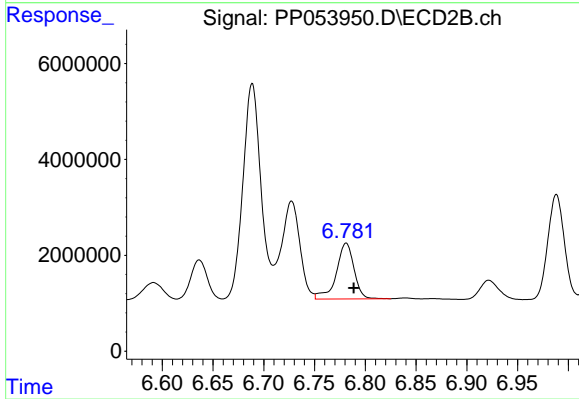
#35 AR-1260-5

R.T.: 7.231 min
 Delta R.T.: -0.008 min
 Response: 58217357
 Conc: 486.83 ng/ml



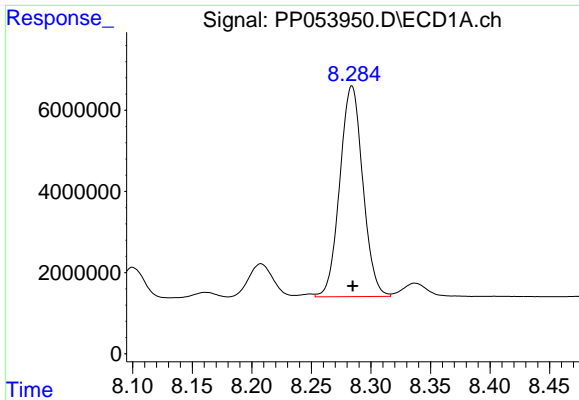
#36 AR-1262-1

R.T.: 7.741 min
 Delta R.T.: 0.000 min
 Response: 32021523
 Conc: 267.50 ng/ml



#36 AR-1262-1

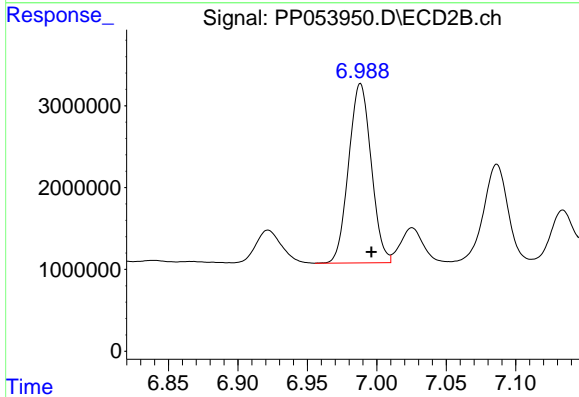
R.T.: 6.781 min
 Delta R.T.: -0.008 min
 Response: 14192219
 Conc: 397.92 ng/ml



#37 AR-1262-2

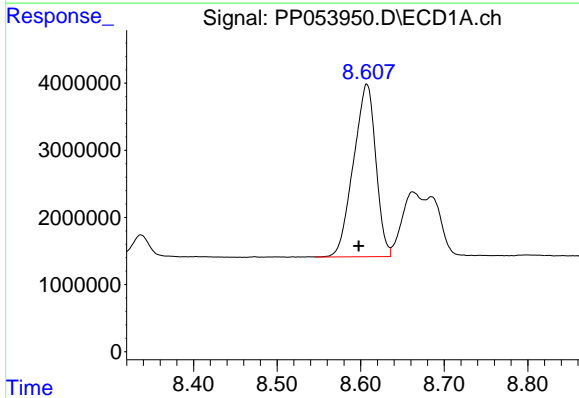
R.T.: 8.284 min
 Delta R.T.: 0.000 min
 Response: 69762513
 Conc: 363.81 ng/ml

Instrument :
 ECD_P
 ClientSampleId :



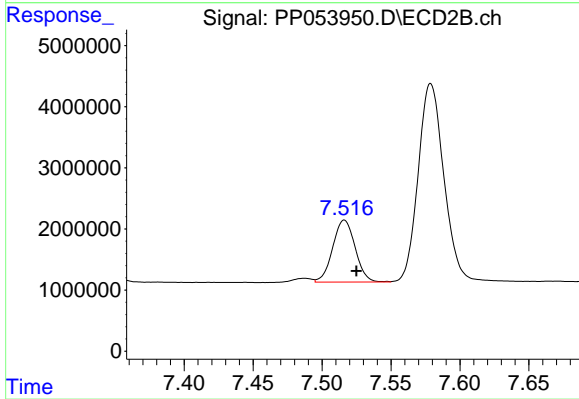
#37 AR-1262-2

R.T.: 6.988 min
 Delta R.T.: -0.008 min
 Response: 24743159
 Conc: 318.31 ng/ml



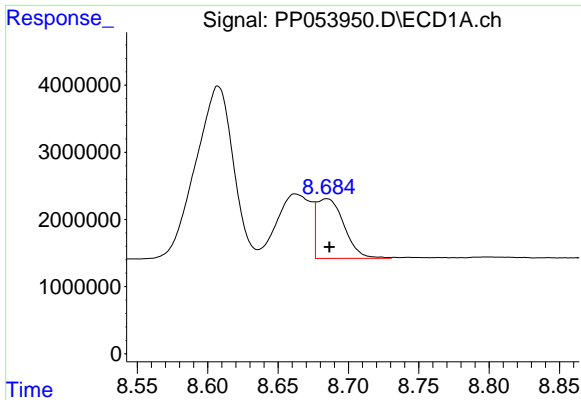
#38 AR-1262-3

R.T.: 8.607 min
 Delta R.T.: 0.010 min
 Response: 47822424
 Conc: 345.12 ng/ml



#38 AR-1262-3

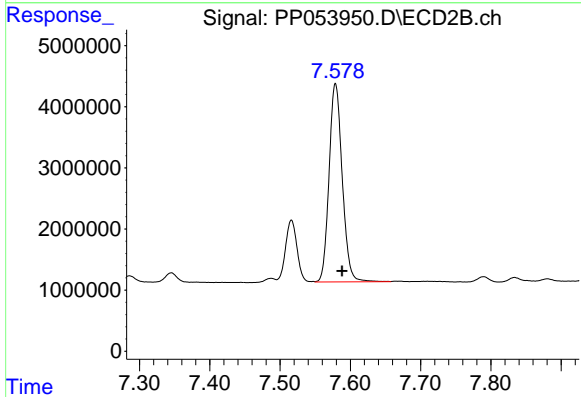
R.T.: 7.516 min
 Delta R.T.: -0.009 min
 Response: 11478122
 Conc: 182.18 ng/ml



#39 AR-1262-4

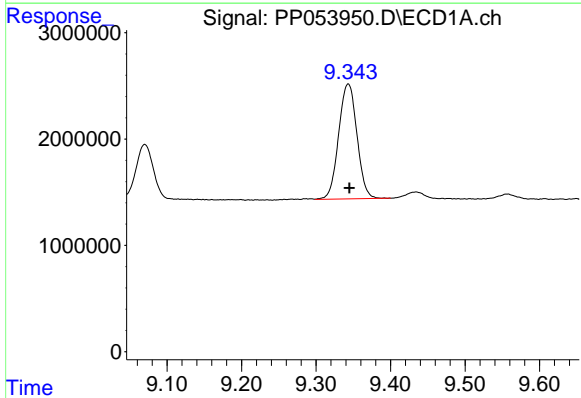
R.T.: 8.685 min
 Delta R.T.: -0.002 min
 Response: 12021048
 Conc: 193.15 ng/ml

Instrument :
 ECD_P
 ClientSampleId :



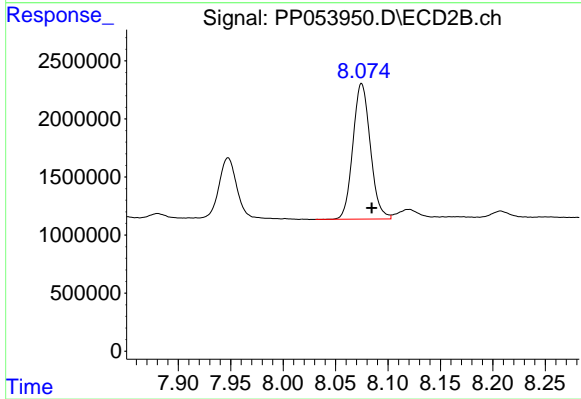
#39 AR-1262-4

R.T.: 7.579 min
 Delta R.T.: -0.009 min
 Response: 42241239
 Conc: 369.44 ng/ml



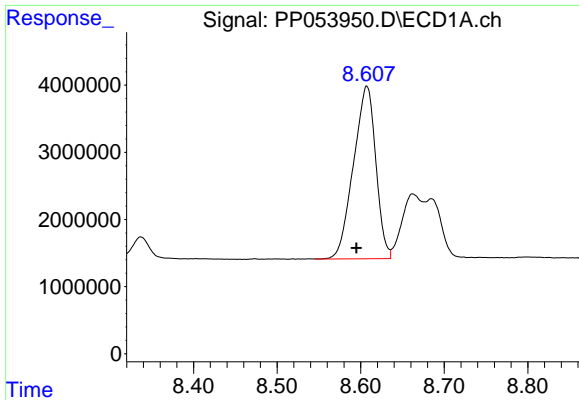
#40 AR-1262-5

R.T.: 9.343 min
 Delta R.T.: -0.001 min
 Response: 18482354
 Conc: 261.55 ng/ml



#40 AR-1262-5

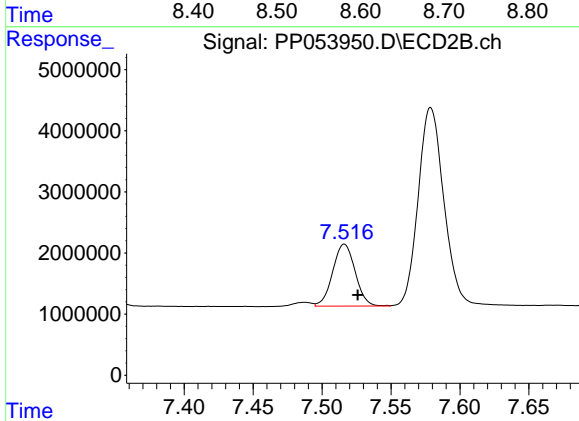
R.T.: 8.075 min
 Delta R.T.: -0.010 min
 Response: 13503547
 Conc: 271.07 ng/ml



#41 AR-1268-1

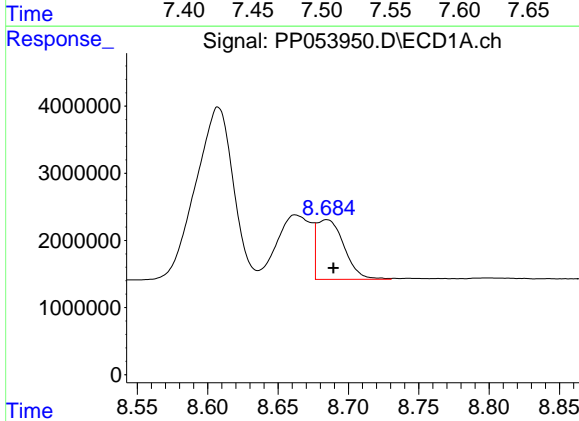
R.T.: 8.607 min
 Delta R.T.: 0.013 min
 Response: 47822424
 Conc: 195.95 ng/ml

Instrument :
 ECD_P
 ClientSampleId :



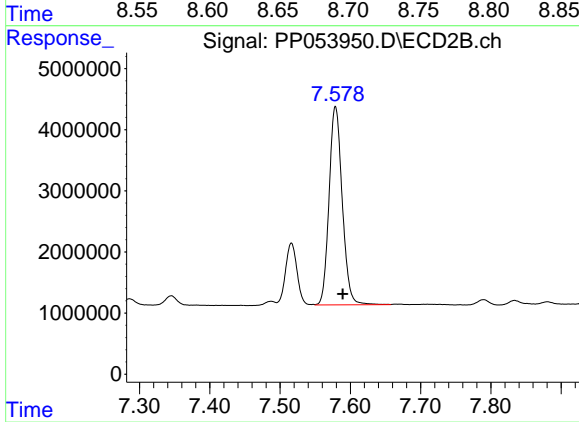
#41 AR-1268-1

R.T.: 7.516 min
 Delta R.T.: -0.010 min
 Response: 11478122
 Conc: 63.44 ng/ml



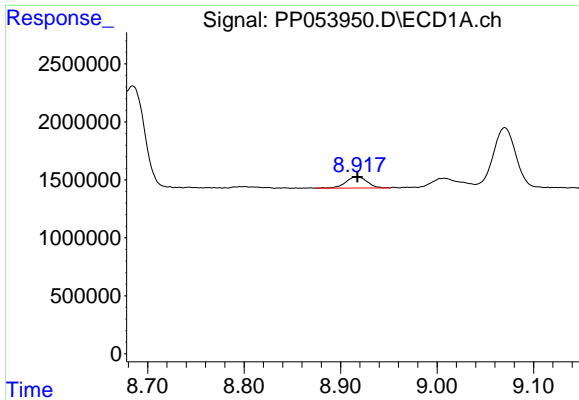
#42 AR-1268-2

R.T.: 8.685 min
 Delta R.T.: -0.005 min
 Response: 12021048
 Conc: 52.89 ng/ml



#42 AR-1268-2

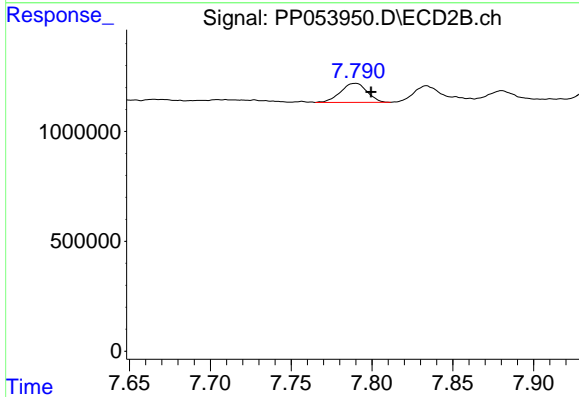
R.T.: 7.579 min
 Delta R.T.: -0.010 min
 Response: 42241239
 Conc: 247.54 ng/ml



#43 AR-1268-3

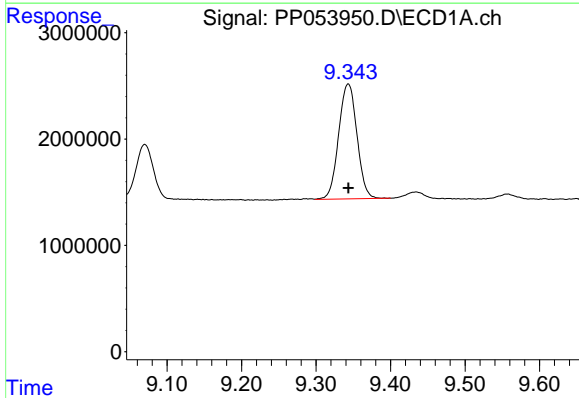
R.T.: 8.917 min
 Delta R.T.: 0.000 min
 Response: 1449304
 Conc: 7.56 ng/ml

Instrument :
 ECD_P
 ClientSampleId :



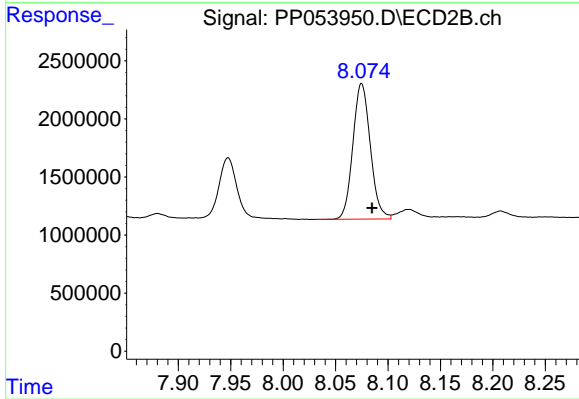
#43 AR-1268-3

R.T.: 7.790 min
 Delta R.T.: -0.010 min
 Response: 992736
 Conc: 6.72 ng/ml



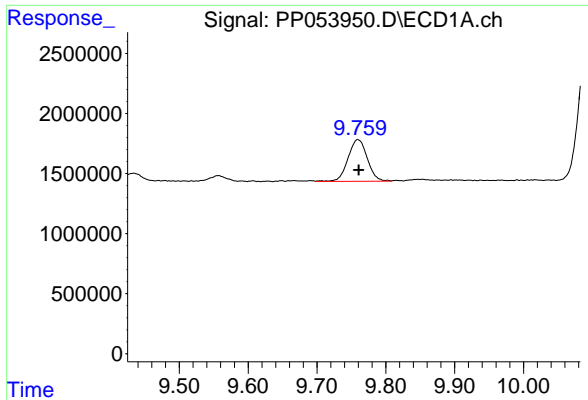
#44 AR-1268-4

R.T.: 9.343 min
 Delta R.T.: 0.000 min
 Response: 18482354
 Conc: 240.10 ng/ml



#44 AR-1268-4

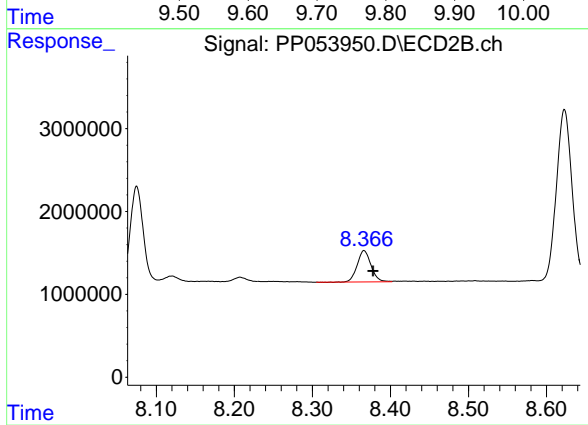
R.T.: 8.075 min
 Delta R.T.: -0.010 min
 Response: 13503547
 Conc: 242.30 ng/ml



#45 AR-1268-5

R.T.: 9.759 min
Delta R.T.: -0.001 min
Response: 6752385
Conc: 11.48 ng/ml

Instrument :
ECD_P
ClientSampleId :



#45 AR-1268-5

R.T.: 8.366 min
Delta R.T.: -0.012 min
Response: 4654828
Conc: 9.85 ng/ml