

Data Path : Z:\pestpcbsrv\HPCHEM1\ECD\_P\Data\PP122222\  
 Data File : PP053951.D  
 Signal(s) : Signal #1: ECD1A.ch Signal #2: ECD2B.ch  
 Acq On : 22 Dec 2022 14:31  
 Operator : YP\AJ  
 Sample : N6147-01  
 Misc :  
 ALS Vial : 12 Sample Multiplier: 1

Instrument :  
 ECD\_P  
 ClientSampleId :

Integration File signal 1: autoint1.e  
 Integration File signal 2: autoint2.e  
 Quant Time: Dec 22 14:47:51 2022  
 Quant Method : Z:\pestpcbsrv\HPCHEM1\ECD\_P\methods\PP121322.M  
 Quant Title : GC EXTRACTABLES  
 QLast Update : Wed Dec 14 05:38:40 2022  
 Response via : Initial Calibration  
 Integrator: ChemStation

Volume Inj. : 2 µl  
 Signal #1 Phase : ZB-MR1 Signal #2 Phase: ZB-MR2  
 Signal #1 Info : 30Mx0.32mmx 0.50µ Signal #2 Info : 30M x 0.32mm x 0.25µm

Compound	RT#1	RT#2	Resp#1	Resp#2	ng/ml	ng/ml
System Monitoring Compounds						
1) SA Tetrachlo...	4.341	3.594	11329909	7113532	5.396	4.555
2) SA Decachlor...	10.099	8.622	7277933	5658825	4.287	4.051
Target Compounds						
3) L1 AR-1016-1	0.000	4.702f	0	140535	N.D.	3.060 #
4) L1 AR-1016-2	5.542	4.702	353388	140535	3.548	2.243 #
5) L1 AR-1016-3	0.000	4.897	0	419111	N.D.	12.348 #
6) L1 AR-1016-4	5.706	4.927	708235	661805	14.293	22.209 #
7) L1 AR-1016-5	6.015f	5.153	556445	635927	10.572	17.537 #
8) L2 AR-1221-1	4.548	3.802	9092752	96732	352.952	4.996 #
9) L2 AR-1221-2	4.629	3.877f	477011	2751685	24.501	188.247 #
10) L2 AR-1221-3	4.712	3.970	168045	193906	2.892	4.359 #
11) L3 AR-1232-1	4.712	3.970	168045	193906	3.752	5.635 #
12) L3 AR-1232-2	5.257f	4.702	1141952	140535	44.393	4.709 #
13) L3 AR-1232-3	5.542	4.897f	353388	419111	7.529	26.453 #
14) L3 AR-1232-4	5.706	4.964	708235	837821	29.891	54.219 #
15) L3 AR-1232-5	5.794	5.153	528846	635927	28.675	38.618 #
16) L4 AR-1242-1	0.000	4.702f	0	140535	N.D.	3.968 #
17) L4 AR-1242-2	5.542	4.702	353388	140535	4.638	2.925 #
18) L4 AR-1242-3	0.000	4.897f	0	419111	N.D.	16.076 #
19) L4 AR-1242-4	5.706	4.964	708235	837821	18.449	29.368 #
20) L4 AR-1242-5	6.430	5.501	600911	989392	14.733	32.414 #
21) L5 AR-1248-1	0.000	4.702f	0	140535	N.D.	4.940 #
22) L5 AR-1248-2	5.794	4.927	528846	661805	8.368	15.998 #
23) L5 AR-1248-3	6.015f	4.964	556445	837821	7.944	19.949 #
24) L5 AR-1248-4	6.392	5.153	2282908	635927	32.370	13.217 #
25) L5 AR-1248-5	6.430	5.532	600911	651990	8.528	17.364 #
26) L6 AR-1254-1	6.392f	5.501	2282908	989392	29.460	15.109 #
27) L6 AR-1254-2	6.584	5.625	632635	461076	5.437	7.906 #
28) L6 AR-1254-3	6.970	6.062f	835980	617299	7.137	7.017 #
29) L6 AR-1254-4	7.244	6.260f	3652334	766996	46.070	16.741 #
30) L6 AR-1254-5	7.672	6.724f	1424904	581307	14.611	7.459 #
31) L7 AR-1260-1	7.132	6.177	198769	840872	2.058	12.891 #
32) L7 AR-1260-2	7.388	6.362	525536	1041064	4.757	13.825 #
33) L7 AR-1260-3	7.728	6.516	1881741	1709567	24.888	23.585 #
34) L7 AR-1260-4	7.953	6.990	807215	242062	8.601	4.461 #
35) L7 AR-1260-5	8.290	7.251	399963	231553	2.522	1.936 #
36) L8 AR-1262-1	7.728	6.791	1881741	86739	15.720	2.432 #
37) L8 AR-1262-2	8.290	6.990	399963	242062	2.086	3.114 #
38) L8 AR-1262-3	8.597	7.552f	586048	125277	4.229	1.988 #
39) L8 AR-1262-4	8.677	7.576	490281	569040	7.878	4.977 #
40) L8 AR-1262-5	9.331	8.106f	158533	561675	2.243	11.275 #
41) L9 AR-1268-1	8.597	7.552f	586048	125277	2.401	0.692 #

Data Path : Z:\pestpcbsrv\HPCHEM1\ECD\_P\Data\PP122222\  
 Data File : PP053951.D  
 Signal(s) : Signal #1: ECD1A.ch Signal #2: ECD2B.ch  
 Acq On : 22 Dec 2022 14:31  
 Operator : YP\AJ  
 Sample : N6147-01  
 Misc :  
 ALS Vial : 12 Sample Multiplier: 1

Instrument :  
 ECD\_P  
 ClientSampleId :

Integration File signal 1: autoint1.e  
 Integration File signal 2: autoint2.e  
 Quant Time: Dec 22 14:47:51 2022  
 Quant Method : Z:\pestpcbsrv\HPCHEM1\ECD\_P\methods\PP121322.M  
 Quant Title : GC EXTRACTABLES  
 QLast Update : Wed Dec 14 05:38:40 2022  
 Response via : Initial Calibration  
 Integrator: ChemStation

Volume Inj. : 2 µl  
 Signal #1 Phase : ZB-MR1 Signal #2 Phase: ZB-MR2  
 Signal #1 Info : 30Mx0.32mmx 0.50µ Signal #2 Info : 30M x 0.32mm x 0.25µm

	Compound	RT#1	RT#2	Resp#1	Resp#2	ng/ml	ng/ml
42)	L9 AR-1268-2	8.677	7.576	490281	569040	2.157	3.335 #
43)	L9 AR-1268-3	8.928	7.803	55472	298801	0.289	2.023 #
44)	L9 AR-1268-4	9.331	8.106f	158533	561675	2.059	10.078 #
45)	L9 AR-1268-5	9.745f	8.370	166276	587560	0.283	1.243 #

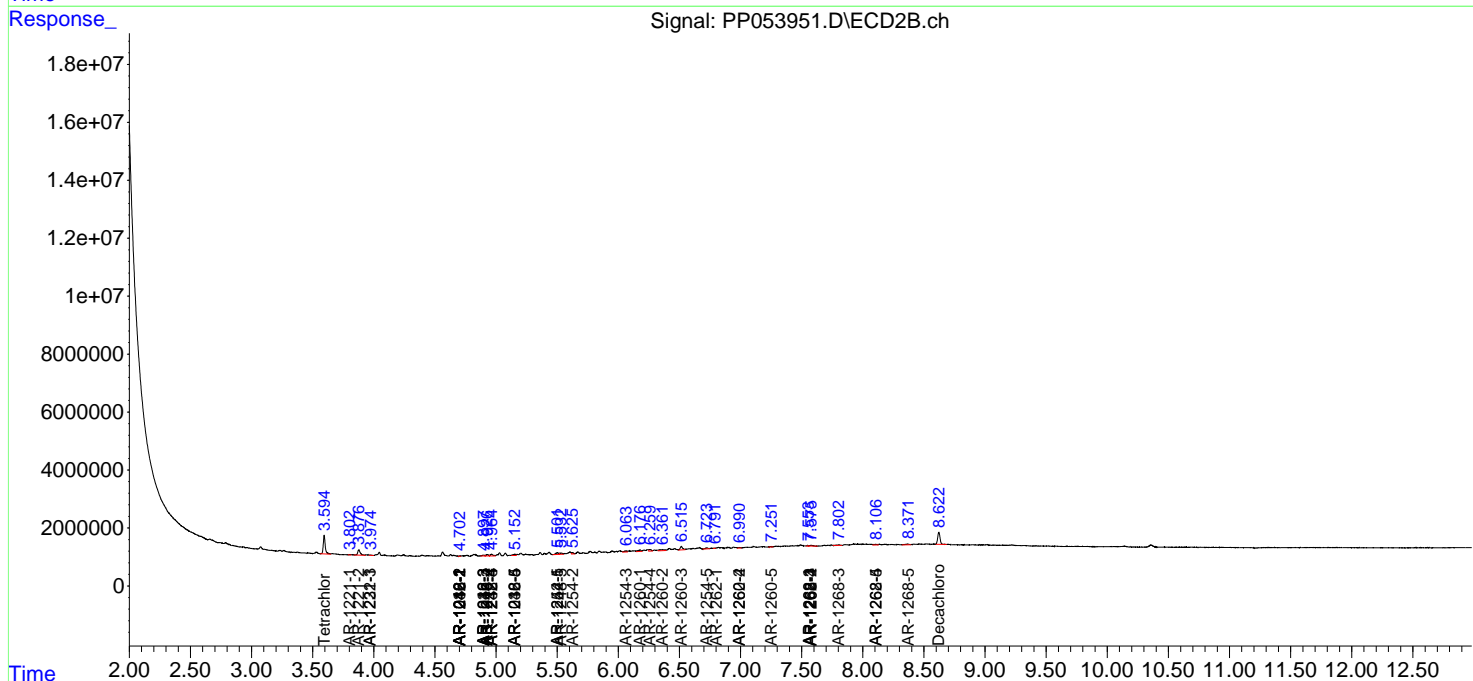
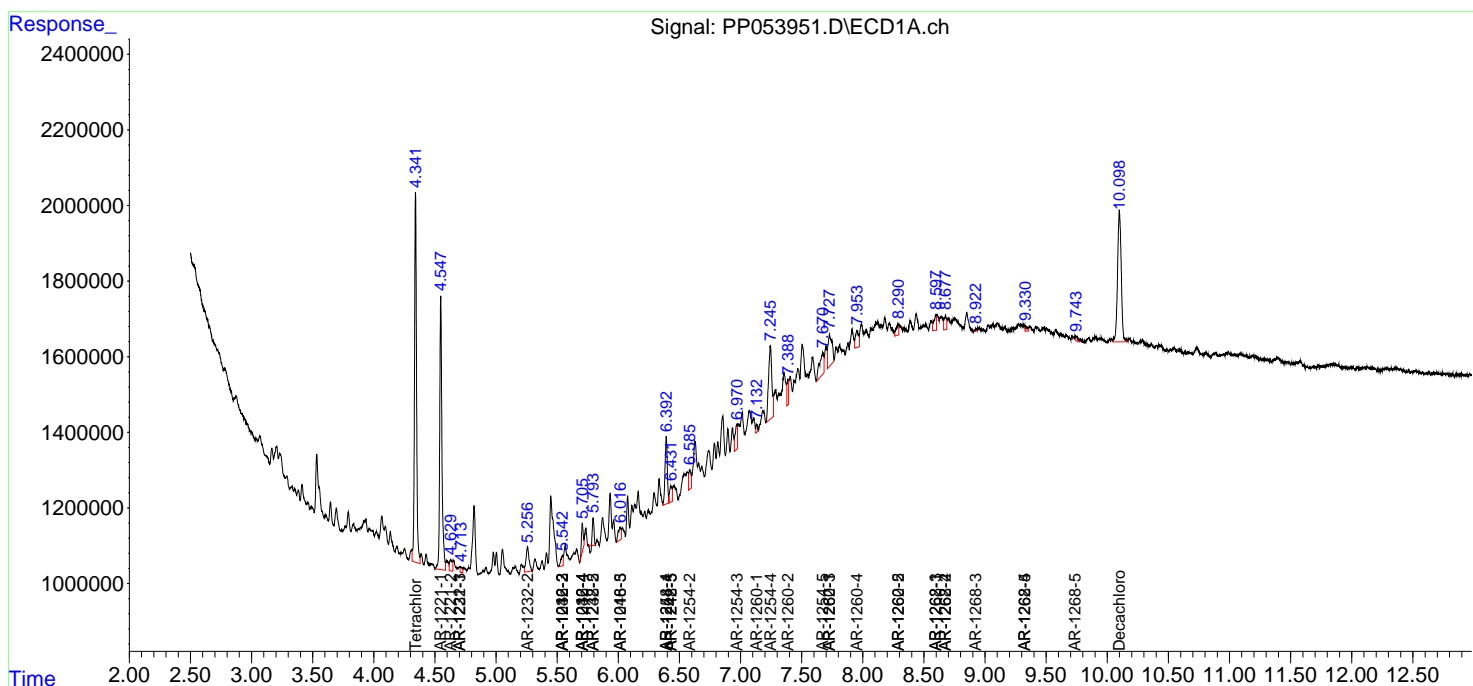
(f)=RT Delta > 1/2 Window (#)=Amounts differ by > 25% (m)=manual int.

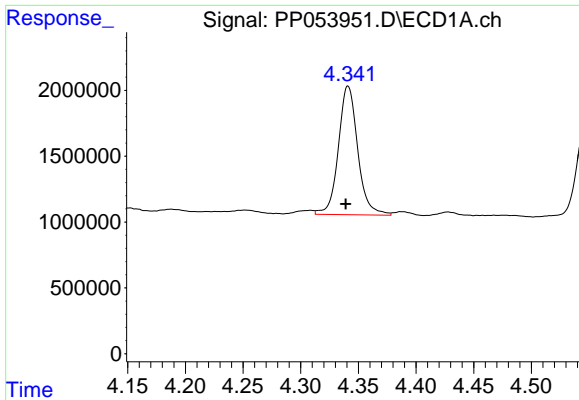
Data Path : Z:\pestpcbsrv\HPCHEM1\ECD\_P\Data\PP122222\  
 Data File : PP053951.D  
 Signal(s) : Signal #1: ECD1A.ch Signal #2: ECD2B.ch  
 Acq On : 22 Dec 2022 14:31  
 Operator : YP\AJ  
 Sample : N6147-01  
 Misc :  
 ALS Vial : 12 Sample Multiplier: 1

Instrument :  
 ECD\_P  
 ClientSampleId :

Integration File signal 1: autoint1.e  
 Integration File signal 2: autoint2.e  
 Quant Time: Dec 22 14:47:51 2022  
 Quant Method : Z:\pestpcbsrv\HPCHEM1\ECD\_P\methods\PP121322.M  
 Quant Title : GC EXTRACTABLES  
 QLast Update : Wed Dec 14 05:38:40 2022  
 Response via : Initial Calibration  
 Integrator: ChemStation

Volume Inj. : 2 µl  
 Signal #1 Phase : ZB-MR1 Signal #2 Phase: ZB-MR2  
 Signal #1 Info : 30Mx0.32mmx 0.50µ Signal #2 Info : 30M x 0.32mm x 0.25µm

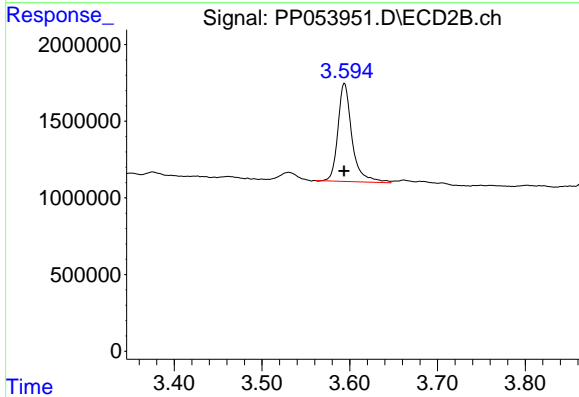




#1 Tetrachloro-m-xylene

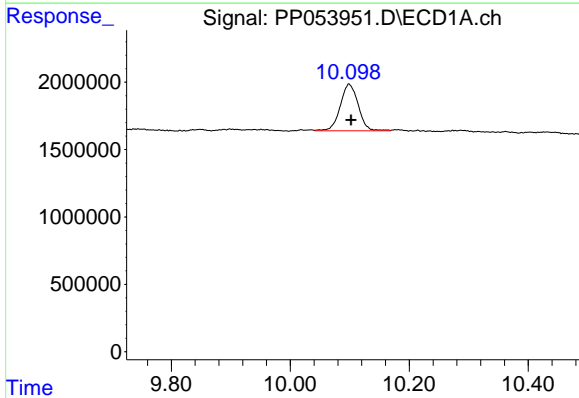
R.T.: 4.341 min  
 Delta R.T.: 0.002 min  
 Response: 11329909  
 Conc: 5.40 ng/ml

Instrument :  
 ECD\_P  
 ClientSampleId :



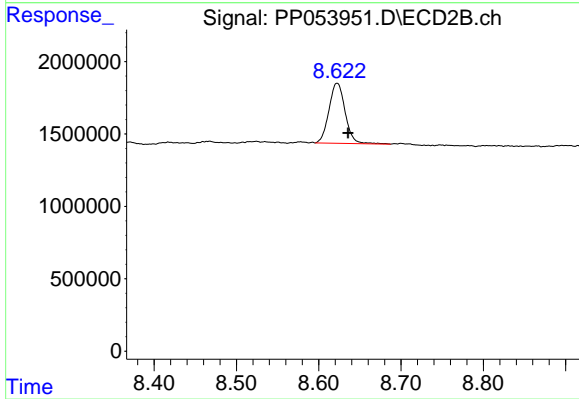
#1 Tetrachloro-m-xylene

R.T.: 3.594 min  
 Delta R.T.: 0.000 min  
 Response: 7113532  
 Conc: 4.55 ng/ml



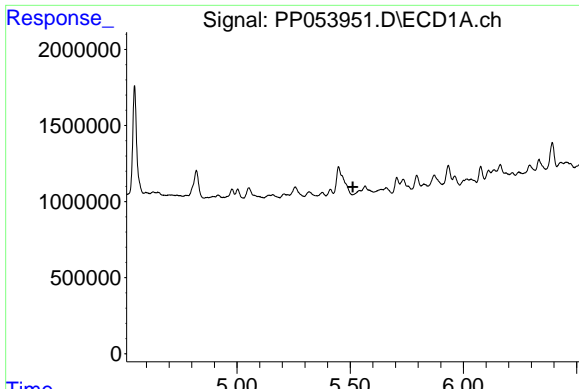
#2 Decachlorobiphenyl

R.T.: 10.099 min  
 Delta R.T.: -0.003 min  
 Response: 7277933  
 Conc: 4.29 ng/ml



#2 Decachlorobiphenyl

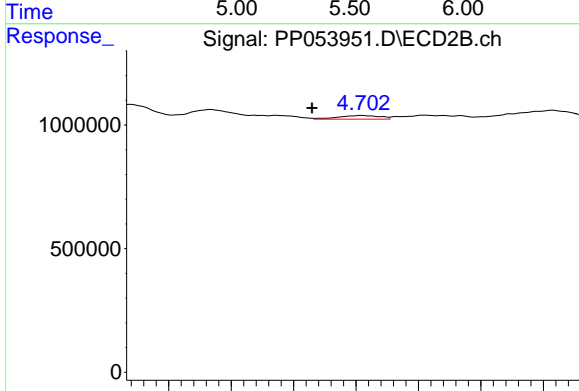
R.T.: 8.622 min  
 Delta R.T.: -0.013 min  
 Response: 5658825  
 Conc: 4.05 ng/ml



#3 AR-1016-1

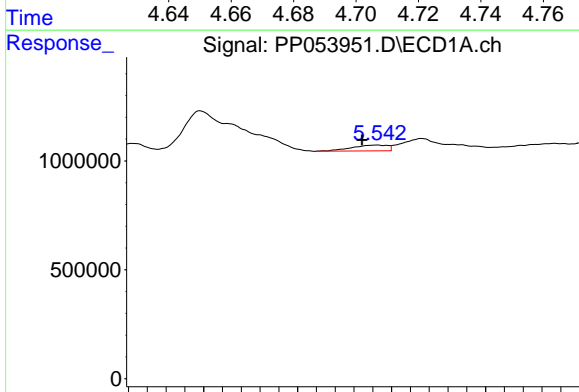
R.T.: 0.000 min  
 Exp R.T.: 5.512 min  
 Response: 0  
 Conc: N.D.

Instrument :  
 ECD\_P  
 ClientSampleId :



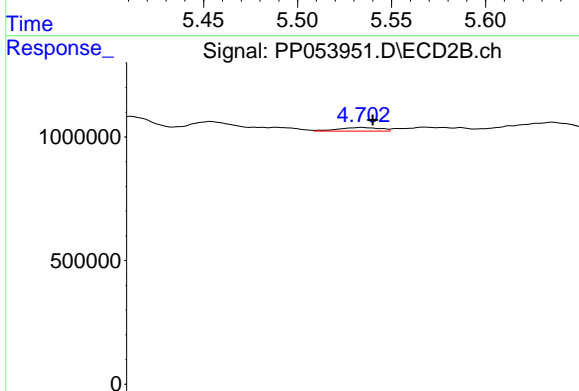
#3 AR-1016-1

R.T.: 4.702 min  
 Delta R.T.: 0.016 min  
 Response: 140535  
 Conc: 3.06 ng/ml



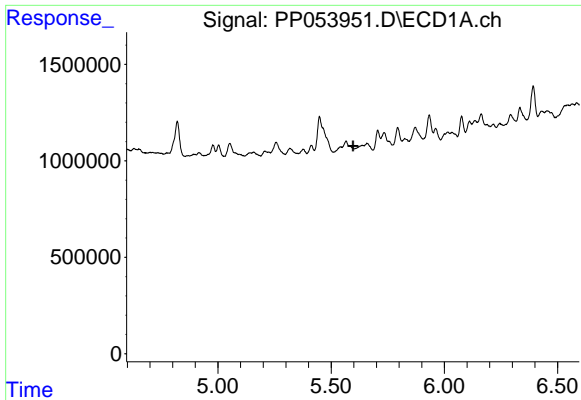
#4 AR-1016-2

R.T.: 5.542 min  
 Delta R.T.: 0.008 min  
 Response: 353388  
 Conc: 3.55 ng/ml



#4 AR-1016-2

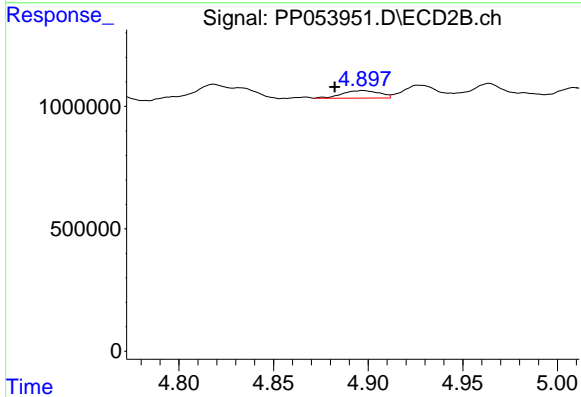
R.T.: 4.702 min  
 Delta R.T.: -0.004 min  
 Response: 140535  
 Conc: 2.24 ng/ml



#5 AR-1016-3

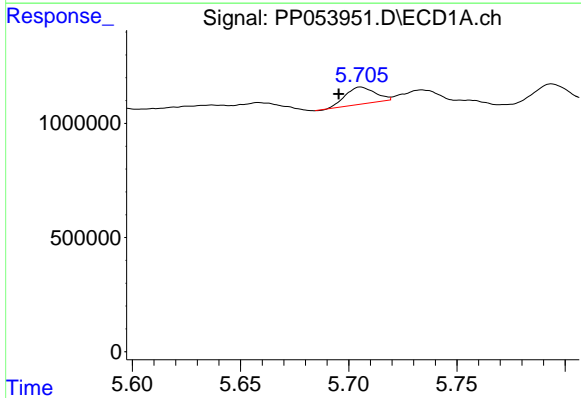
R.T.: 0.000 min  
 Exp R.T.: 5.596 min  
 Response: 0  
 Conc: N.D.

Instrument :  
 ECD\_P  
 ClientSampleId :



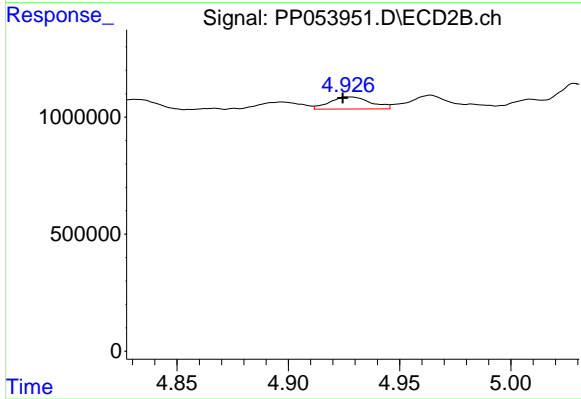
#5 AR-1016-3

R.T.: 4.897 min  
 Delta R.T.: 0.015 min  
 Response: 419111  
 Conc: 12.35 ng/ml



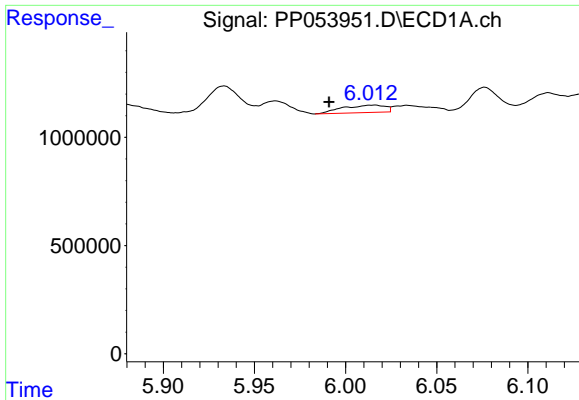
#6 AR-1016-4

R.T.: 5.706 min  
 Delta R.T.: 0.010 min  
 Response: 708235  
 Conc: 14.29 ng/ml



#6 AR-1016-4

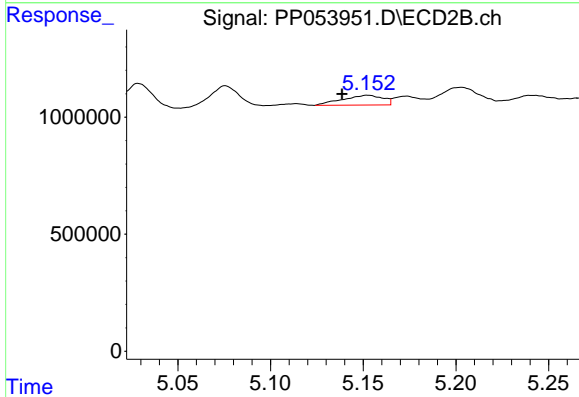
R.T.: 4.927 min  
 Delta R.T.: 0.002 min  
 Response: 661805  
 Conc: 22.21 ng/ml



#7 AR-1016-5

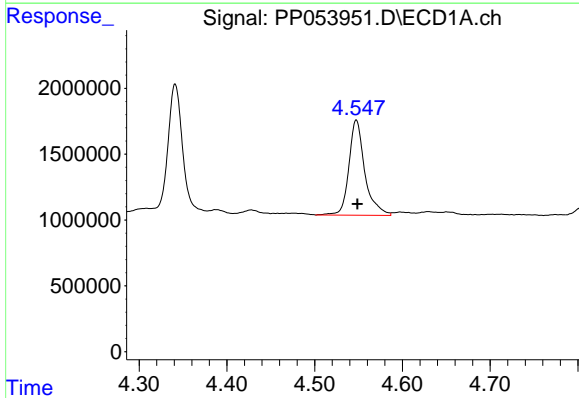
R.T.: 6.015 min  
 Delta R.T.: 0.025 min  
 Response: 556445  
 Conc: 10.57 ng/ml

Instrument :  
 ECD\_P  
 ClientSampleId :



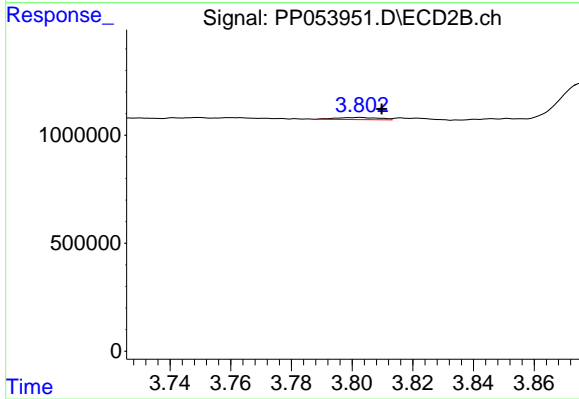
#7 AR-1016-5

R.T.: 5.153 min  
 Delta R.T.: 0.014 min  
 Response: 635927  
 Conc: 17.54 ng/ml



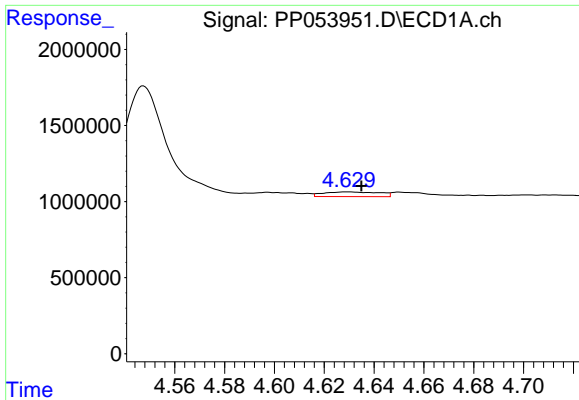
#8 AR-1221-1

R.T.: 4.548 min  
 Delta R.T.: -0.001 min  
 Response: 9092752  
 Conc: 352.95 ng/ml



#8 AR-1221-1

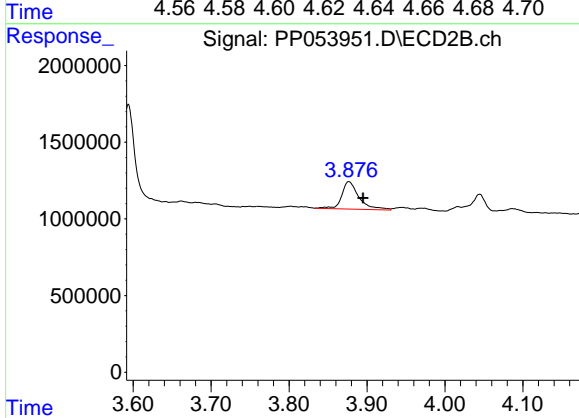
R.T.: 3.802 min  
 Delta R.T.: -0.008 min  
 Response: 96732  
 Conc: 5.00 ng/ml



#9 AR-1221-2

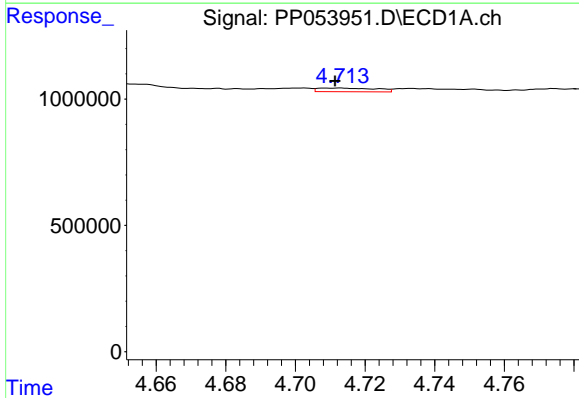
R.T.: 4.629 min  
 Delta R.T.: -0.006 min  
 Response: 477011  
 Conc: 24.50 ng/ml

Instrument :  
 ECD\_P  
 ClientSampleId :



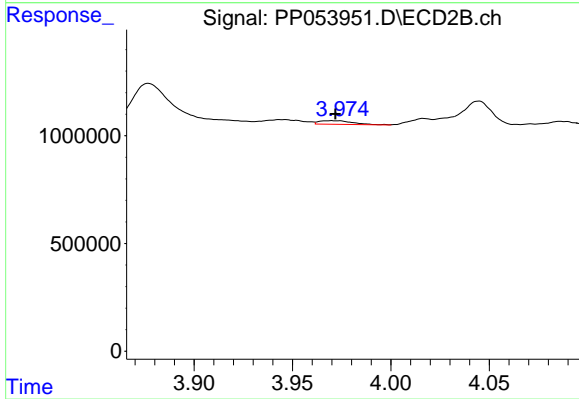
#9 AR-1221-2

R.T.: 3.877 min  
 Delta R.T.: -0.018 min  
 Response: 2751685  
 Conc: 188.25 ng/ml



#10 AR-1221-3

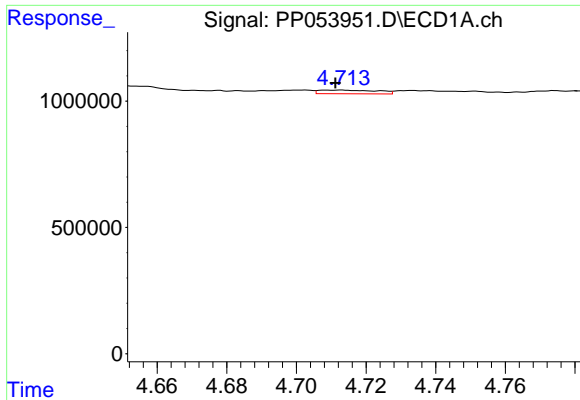
R.T.: 4.712 min  
 Delta R.T.: 0.000 min  
 Response: 168045  
 Conc: 2.89 ng/ml



#10 AR-1221-3

R.T.: 3.970 min  
 Delta R.T.: -0.002 min  
 Response: 193906  
 Conc: 4.36 ng/ml

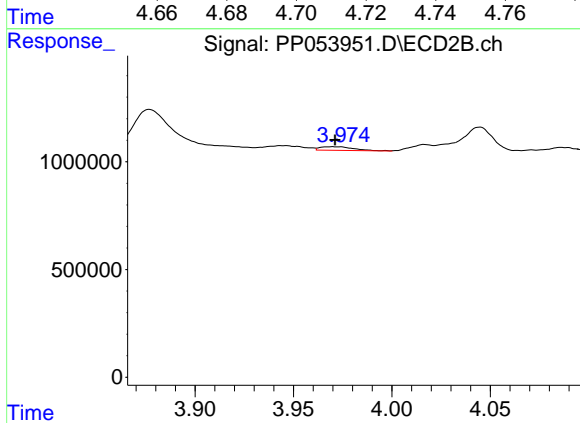




#11 AR-1232-1

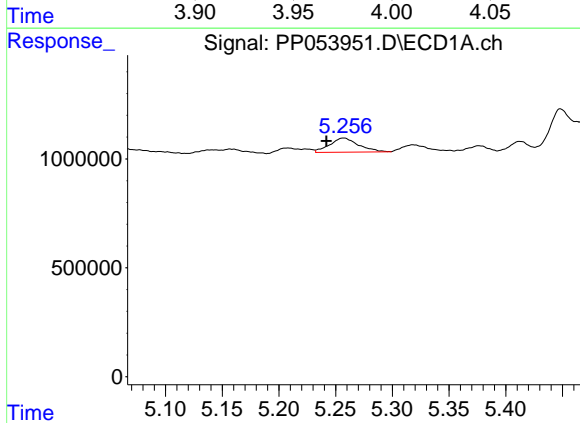
R.T.: 4.712 min  
 Delta R.T.: 0.000 min  
 Response: 168045  
 Conc: 3.75 ng/ml

Instrument :  
 ECD\_P  
 ClientSampleId :



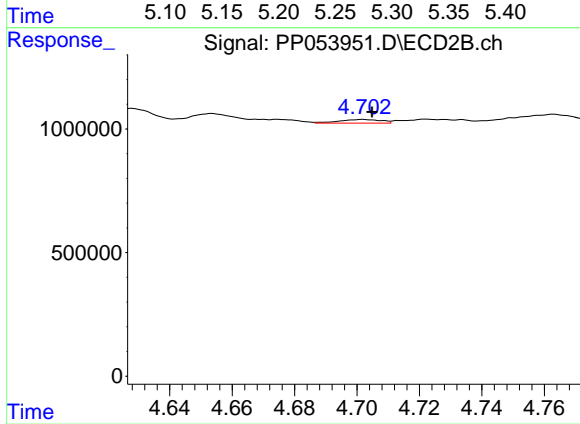
#11 AR-1232-1

R.T.: 3.970 min  
 Delta R.T.: 0.000 min  
 Response: 193906  
 Conc: 5.63 ng/ml



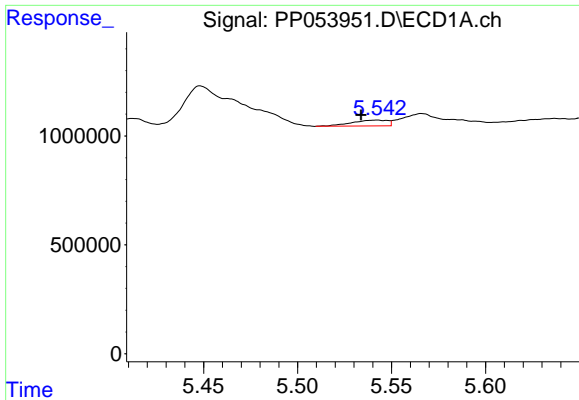
#12 AR-1232-2

R.T.: 5.257 min  
 Delta R.T.: 0.015 min  
 Response: 1141952  
 Conc: 44.39 ng/ml



#12 AR-1232-2

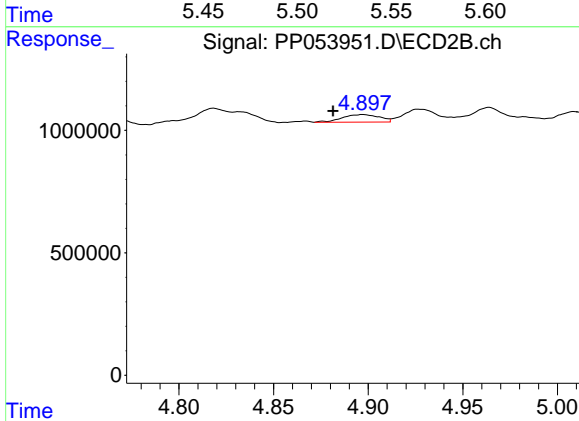
R.T.: 4.702 min  
 Delta R.T.: -0.003 min  
 Response: 140535  
 Conc: 4.71 ng/ml



#13 AR-1232-3

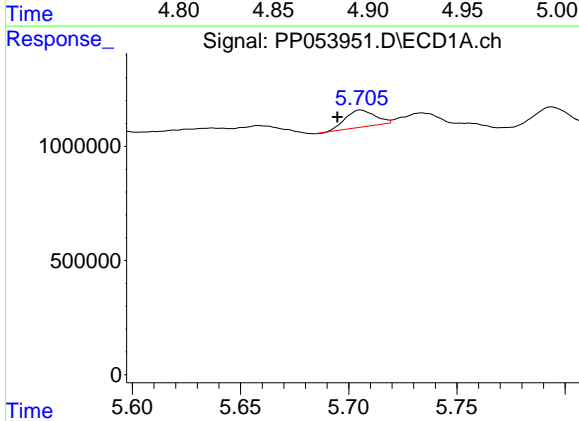
R.T.: 5.542 min  
 Delta R.T.: 0.008 min  
 Response: 353388  
 Conc: 7.53 ng/ml

Instrument :  
 ECD\_P  
 ClientSampleId :



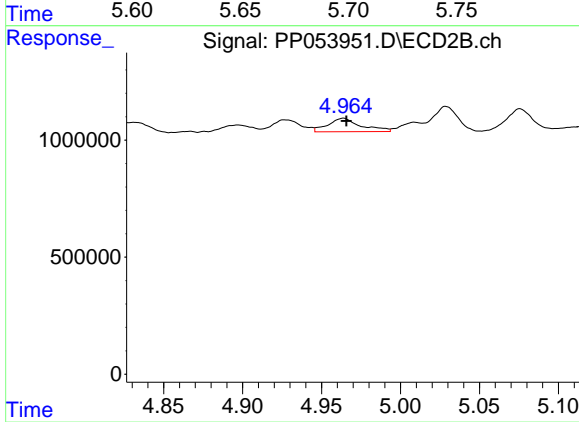
#13 AR-1232-3

R.T.: 4.897 min  
 Delta R.T.: 0.016 min  
 Response: 419111  
 Conc: 26.45 ng/ml



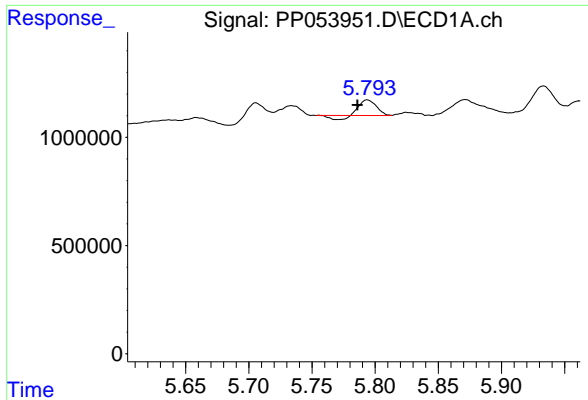
#14 AR-1232-4

R.T.: 5.706 min  
 Delta R.T.: 0.011 min  
 Response: 708235  
 Conc: 29.89 ng/ml



#14 AR-1232-4

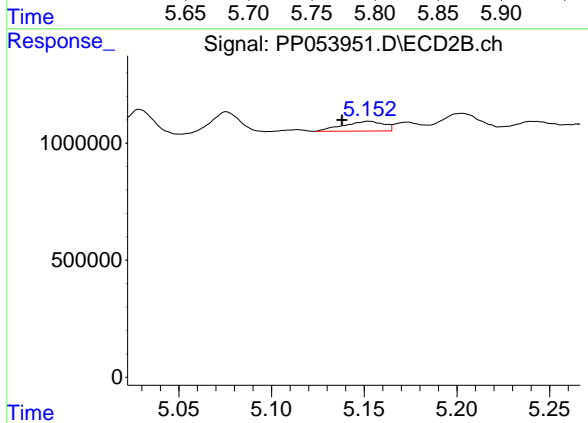
R.T.: 4.964 min  
 Delta R.T.: -0.002 min  
 Response: 837821  
 Conc: 54.22 ng/ml



#15 AR-1232-5

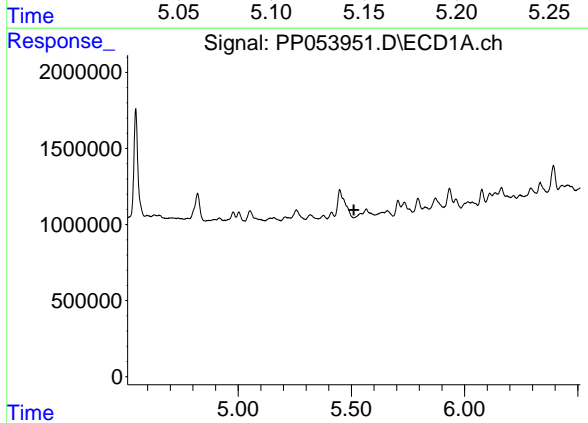
R.T.: 5.794 min  
 Delta R.T.: 0.008 min  
 Response: 528846  
 Conc: 28.68 ng/ml

Instrument :  
 ECD\_P  
 ClientSampleId :



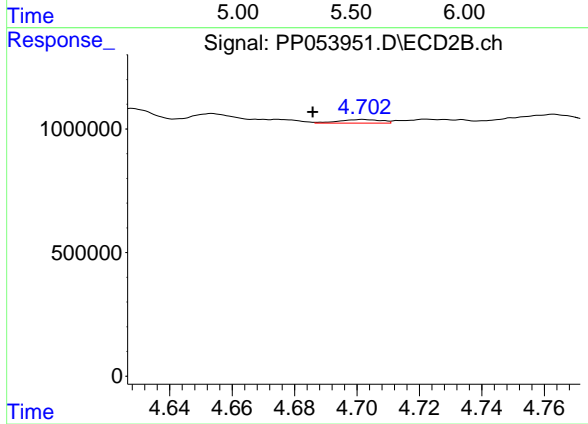
#15 AR-1232-5

R.T.: 5.153 min  
 Delta R.T.: 0.015 min  
 Response: 635927  
 Conc: 38.62 ng/ml



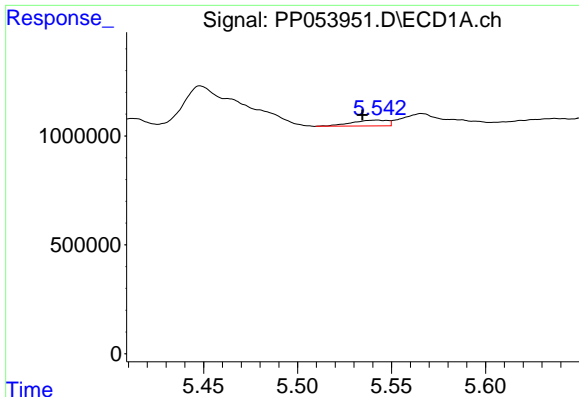
#16 AR-1242-1

R.T.: 0.000 min  
 Exp R.T. : 5.511 min  
 Response: 0  
 Conc: N.D.



#16 AR-1242-1

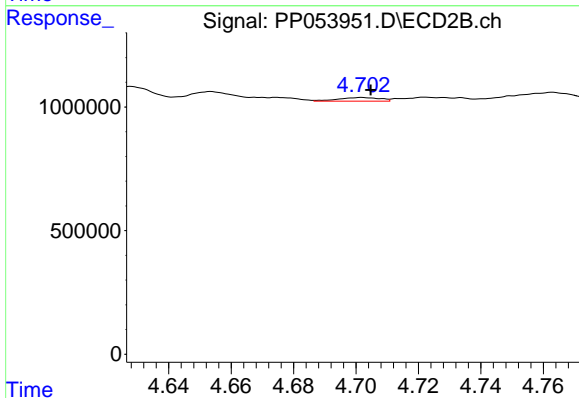
R.T.: 4.702 min  
 Delta R.T.: 0.016 min  
 Response: 140535  
 Conc: 3.97 ng/ml



#17 AR-1242-2

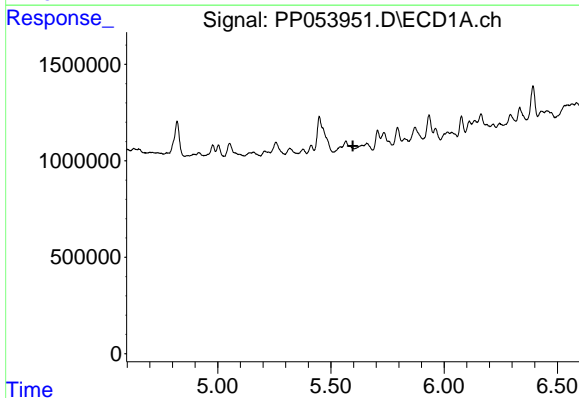
R.T.: 5.542 min  
 Delta R.T.: 0.008 min  
 Response: 353388  
 Conc: 4.64 ng/ml

Instrument :  
 ECD\_P  
 ClientSampleId :



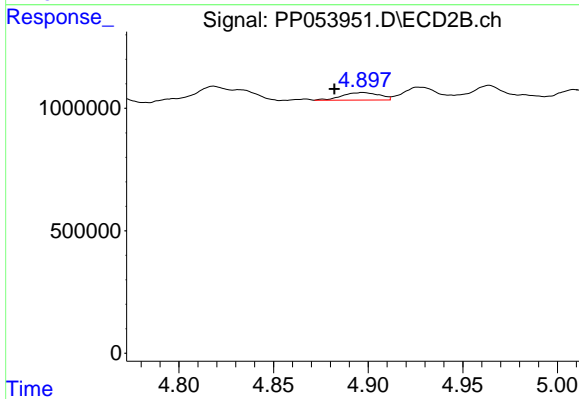
#17 AR-1242-2

R.T.: 4.702 min  
 Delta R.T.: -0.003 min  
 Response: 140535  
 Conc: 2.93 ng/ml



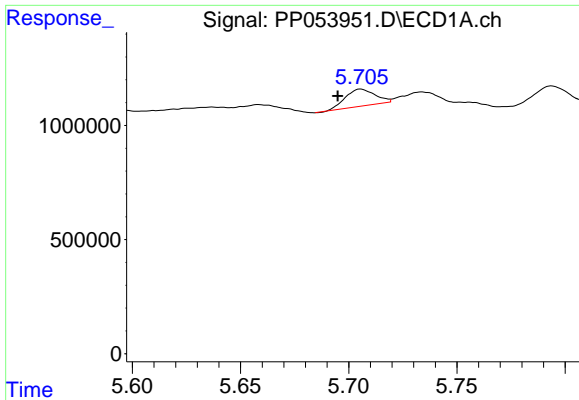
#18 AR-1242-3

R.T.: 0.000 min  
 Exp R.T. : 5.597 min  
 Response: 0  
 Conc: N.D.



#18 AR-1242-3

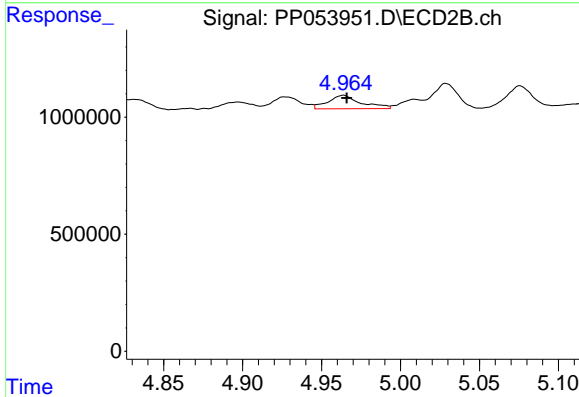
R.T.: 4.897 min  
 Delta R.T.: 0.015 min  
 Response: 419111  
 Conc: 16.08 ng/ml



#19 AR-1242-4

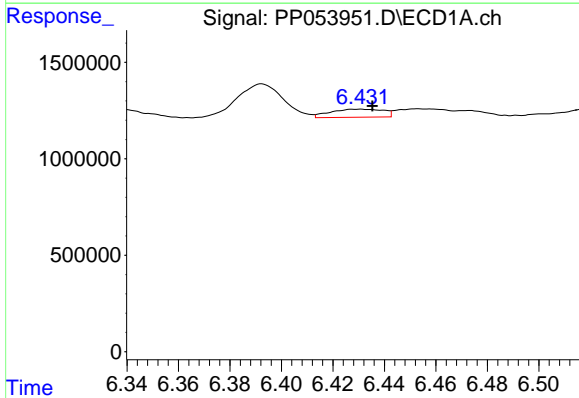
R.T.: 5.706 min  
 Delta R.T.: 0.011 min  
 Response: 708235  
 Conc: 18.45 ng/ml

Instrument :  
 ECD\_P  
 ClientSampleId :



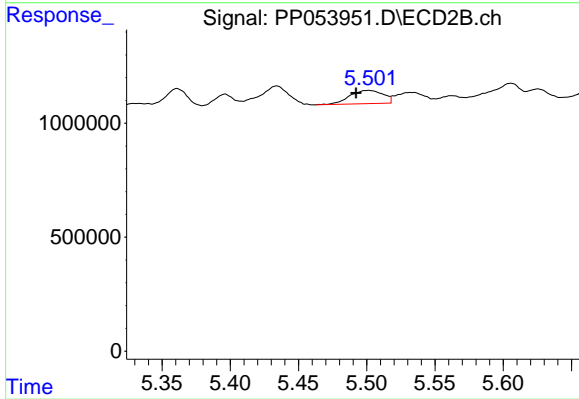
#19 AR-1242-4

R.T.: 4.964 min  
 Delta R.T.: -0.002 min  
 Response: 837821  
 Conc: 29.37 ng/ml



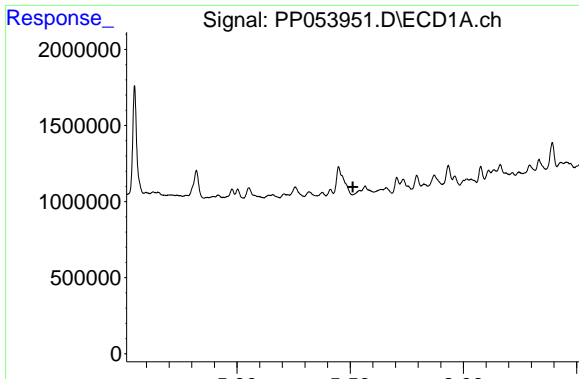
#20 AR-1242-5

R.T.: 6.430 min  
 Delta R.T.: -0.005 min  
 Response: 600911  
 Conc: 14.73 ng/ml



#20 AR-1242-5

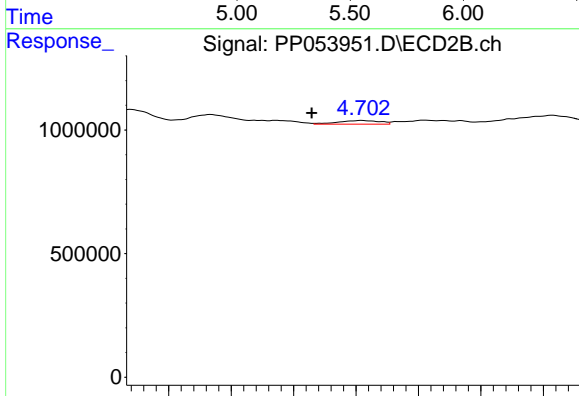
R.T.: 5.501 min  
 Delta R.T.: 0.009 min  
 Response: 989392  
 Conc: 32.41 ng/ml



#21 AR-1248-1

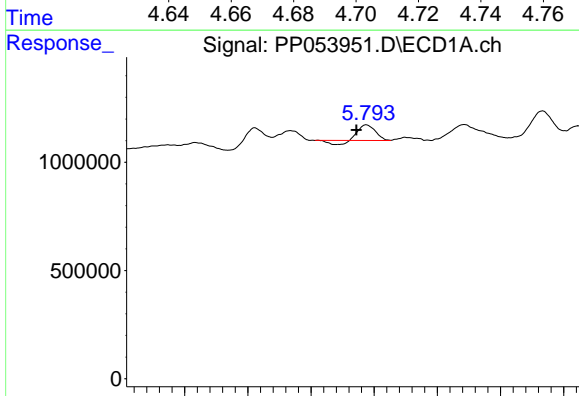
R.T.: 0.000 min  
 Exp R.T.: 5.512 min  
 Response: 0  
 Conc: N.D.

Instrument :  
 ECD\_P  
 ClientSampleId :



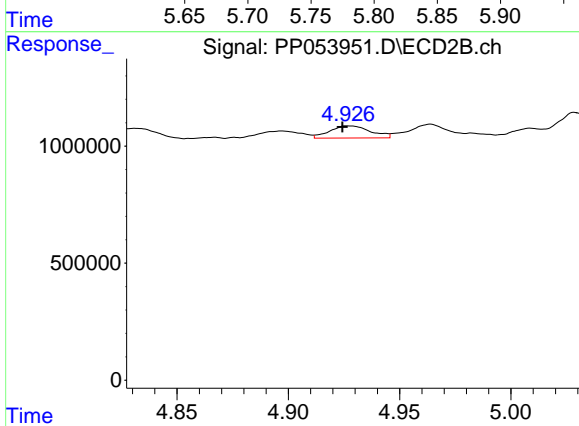
#21 AR-1248-1

R.T.: 4.702 min  
 Delta R.T.: 0.016 min  
 Response: 140535  
 Conc: 4.94 ng/ml



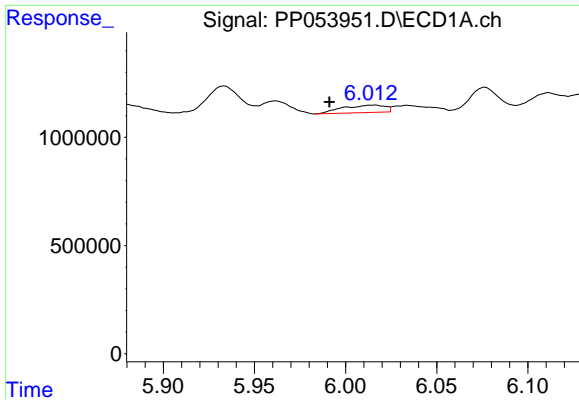
#22 AR-1248-2

R.T.: 5.794 min  
 Delta R.T.: 0.008 min  
 Response: 528846  
 Conc: 8.37 ng/ml



#22 AR-1248-2

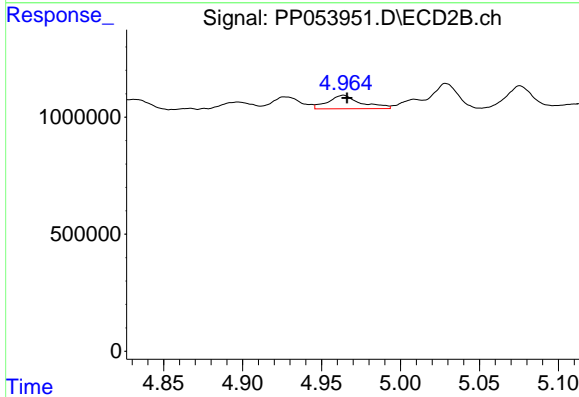
R.T.: 4.927 min  
 Delta R.T.: 0.003 min  
 Response: 661805  
 Conc: 16.00 ng/ml



#23 AR-1248-3

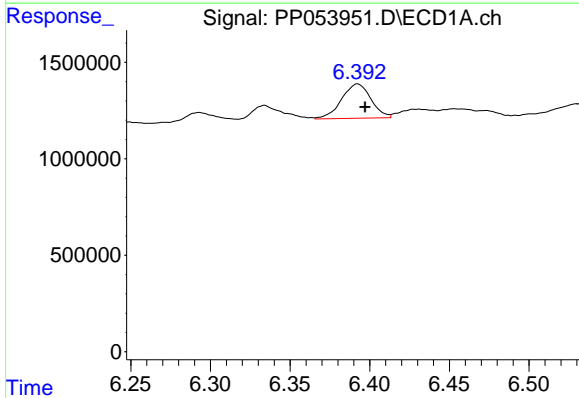
R.T.: 6.015 min  
 Delta R.T.: 0.024 min  
 Response: 556445  
 Conc: 7.94 ng/ml

Instrument :  
 ECD\_P  
 ClientSampleId :



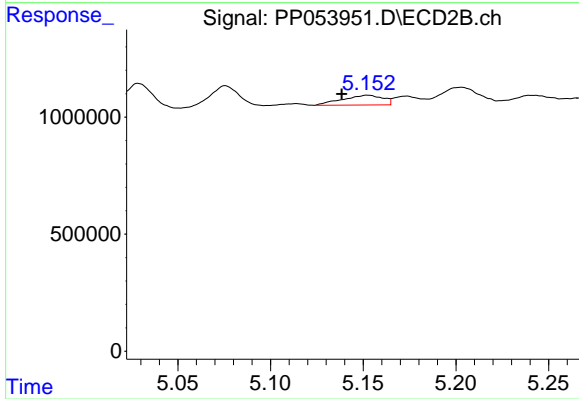
#23 AR-1248-3

R.T.: 4.964 min  
 Delta R.T.: -0.002 min  
 Response: 837821  
 Conc: 19.95 ng/ml



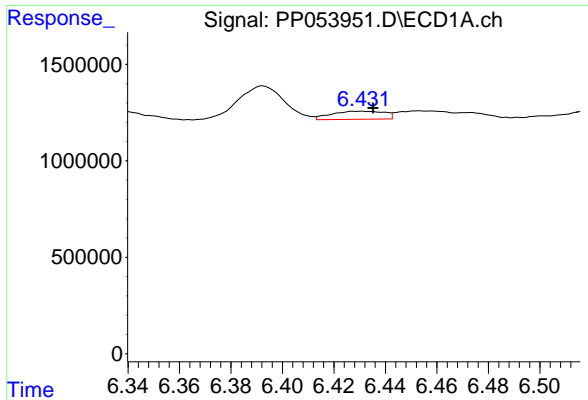
#24 AR-1248-4

R.T.: 6.392 min  
 Delta R.T.: -0.005 min  
 Response: 2282908  
 Conc: 32.37 ng/ml



#24 AR-1248-4

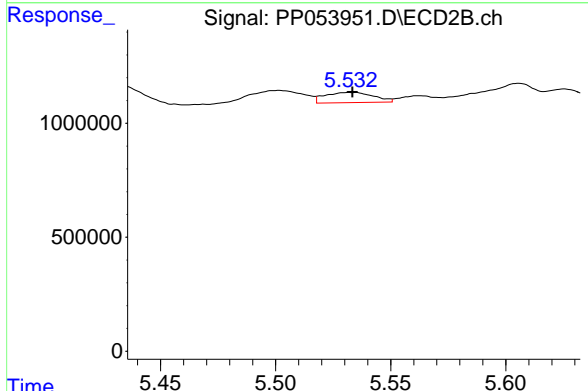
R.T.: 5.153 min  
 Delta R.T.: 0.014 min  
 Response: 635927  
 Conc: 13.22 ng/ml



#25 AR-1248-5

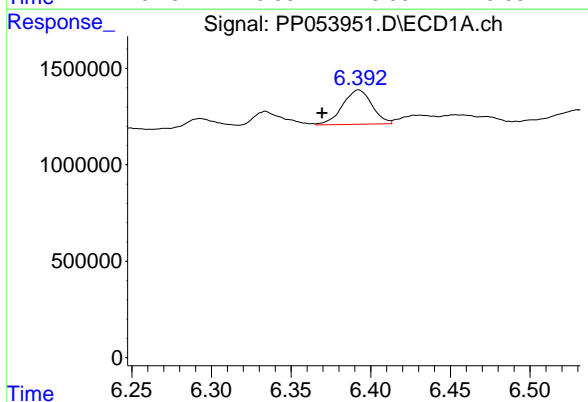
R.T.: 6.430 min  
 Delta R.T.: -0.005 min  
 Response: 600911  
 Conc: 8.53 ng/ml

Instrument :  
 ECD\_P  
 ClientSampleId :



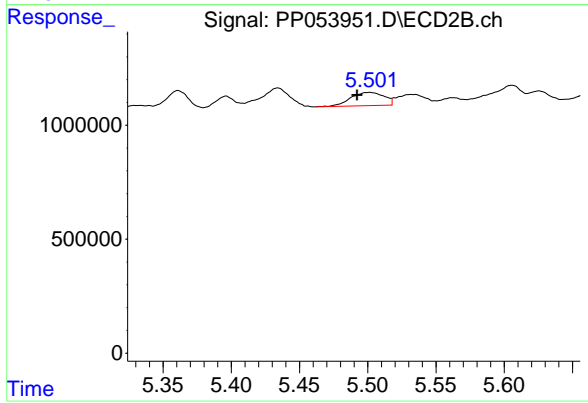
#25 AR-1248-5

R.T.: 5.532 min  
 Delta R.T.: 0.000 min  
 Response: 651990  
 Conc: 17.36 ng/ml



#26 AR-1254-1

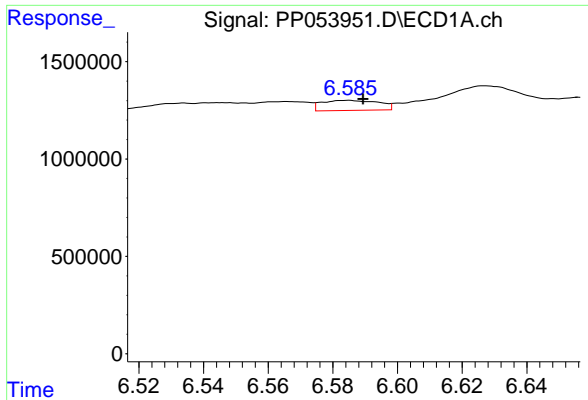
R.T.: 6.392 min  
 Delta R.T.: 0.023 min  
 Response: 2282908  
 Conc: 29.46 ng/ml



#26 AR-1254-1

R.T.: 5.501 min  
 Delta R.T.: 0.009 min  
 Response: 989392  
 Conc: 15.11 ng/ml

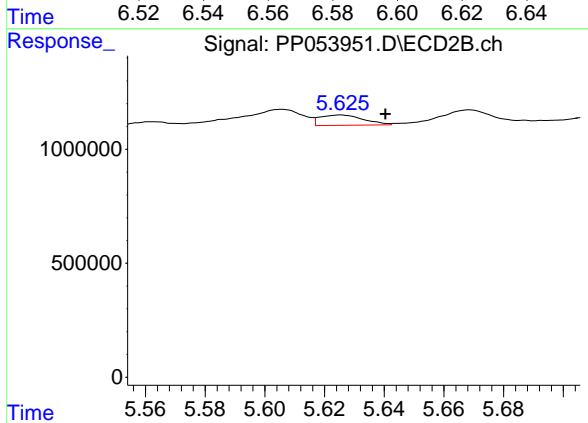




#27 AR-1254-2

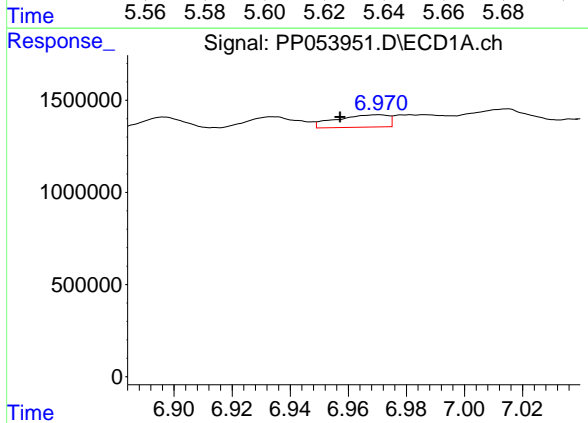
R.T.: 6.584 min  
 Delta R.T.: -0.005 min  
 Response: 632635  
 Conc: 5.44 ng/ml

Instrument :  
 ECD\_P  
 ClientSampleId :



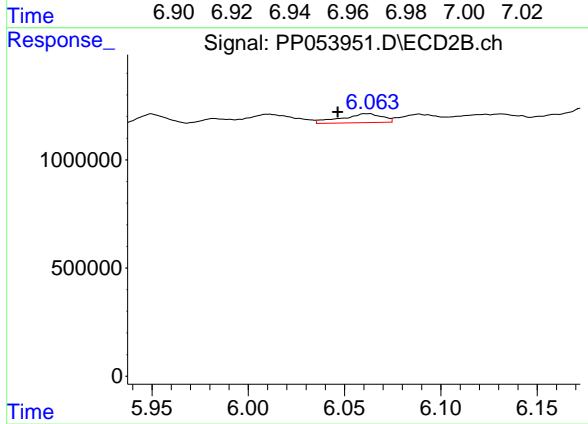
#27 AR-1254-2

R.T.: 5.625 min  
 Delta R.T.: -0.015 min  
 Response: 461076  
 Conc: 7.91 ng/ml



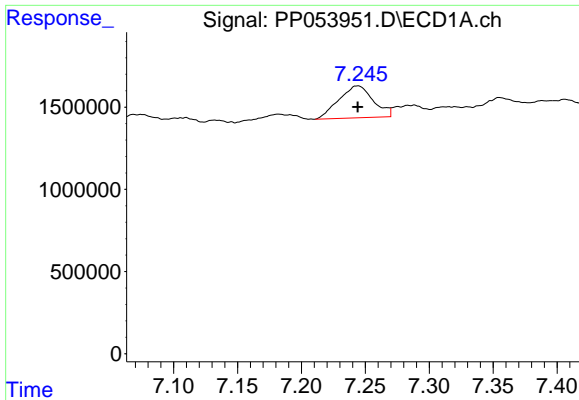
#28 AR-1254-3

R.T.: 6.970 min  
 Delta R.T.: 0.013 min  
 Response: 835980  
 Conc: 7.14 ng/ml



#28 AR-1254-3

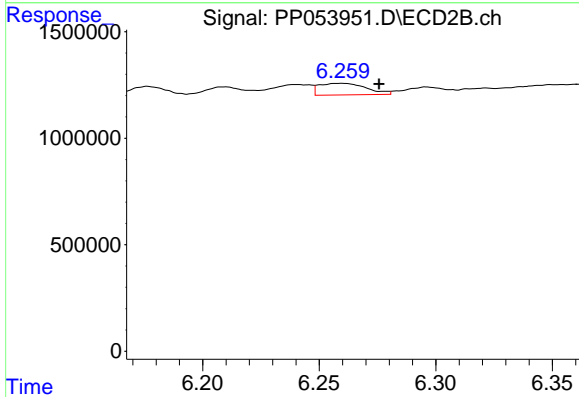
R.T.: 6.062 min  
 Delta R.T.: 0.015 min  
 Response: 617299  
 Conc: 7.02 ng/ml



#29 AR-1254-4

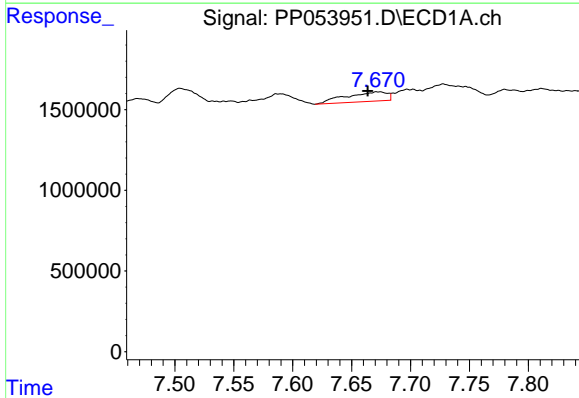
R.T.: 7.244 min  
 Delta R.T.: 0.000 min  
 Response: 3652334  
 Conc: 46.07 ng/ml

Instrument :  
 ECD\_P  
 ClientSampleId :



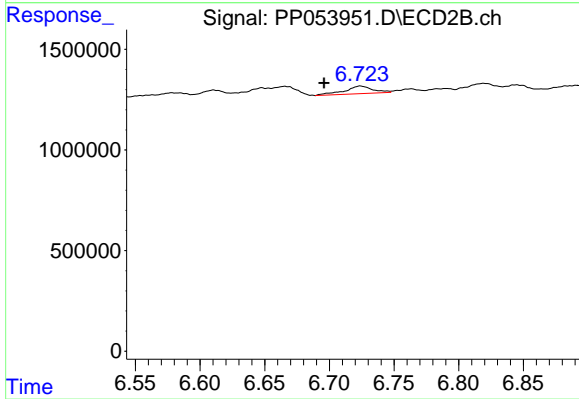
#29 AR-1254-4

R.T.: 6.260 min  
 Delta R.T.: -0.016 min  
 Response: 766996  
 Conc: 16.74 ng/ml



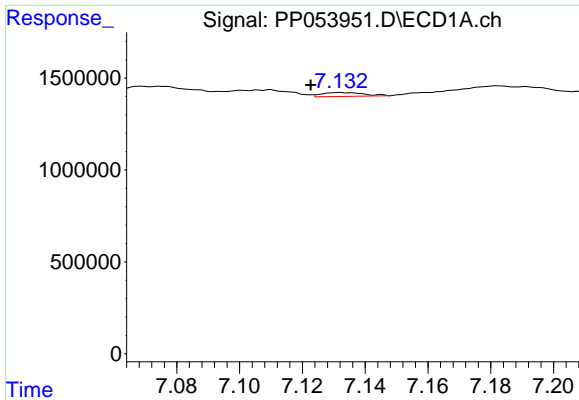
#30 AR-1254-5

R.T.: 7.672 min  
 Delta R.T.: 0.009 min  
 Response: 1424904  
 Conc: 14.61 ng/ml



#30 AR-1254-5

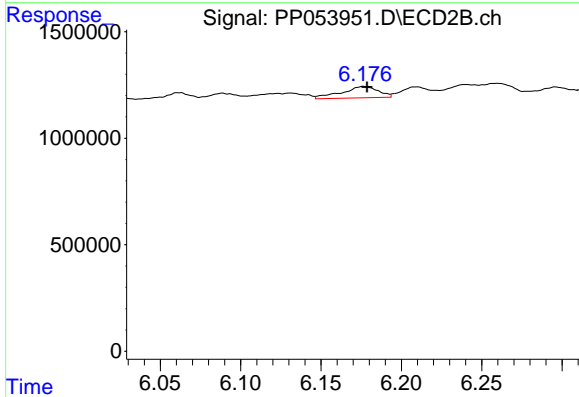
R.T.: 6.724 min  
 Delta R.T.: 0.028 min  
 Response: 581307  
 Conc: 7.46 ng/ml



#31 AR-1260-1

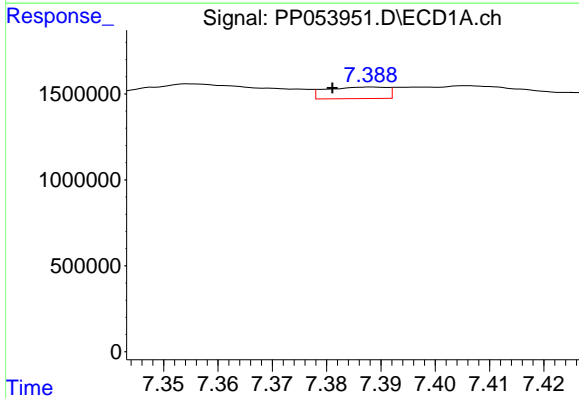
R.T.: 7.132 min  
 Delta R.T.: 0.009 min  
 Response: 198769  
 Conc: 2.06 ng/ml

Instrument :  
 ECD\_P  
 ClientSampleId :



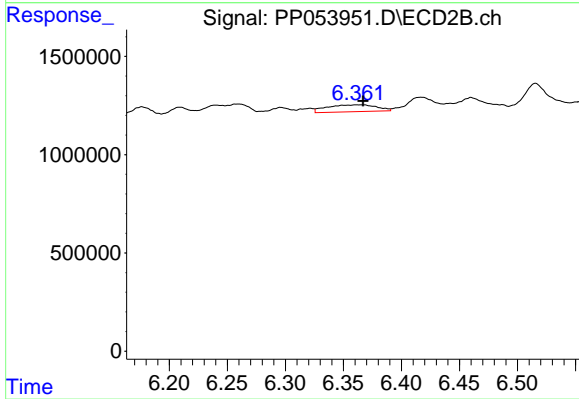
#31 AR-1260-1

R.T.: 6.177 min  
 Delta R.T.: -0.002 min  
 Response: 840872  
 Conc: 12.89 ng/ml



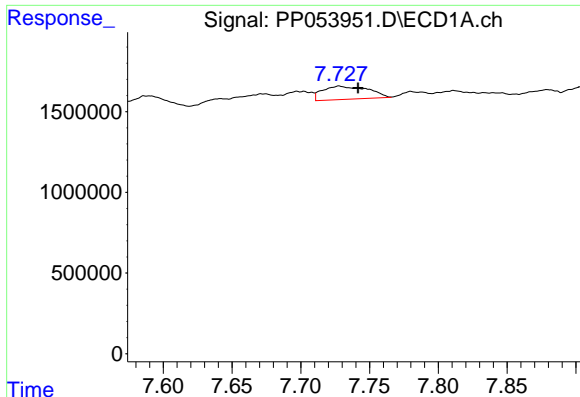
#32 AR-1260-2

R.T.: 7.388 min  
 Delta R.T.: 0.007 min  
 Response: 525536  
 Conc: 4.76 ng/ml



#32 AR-1260-2

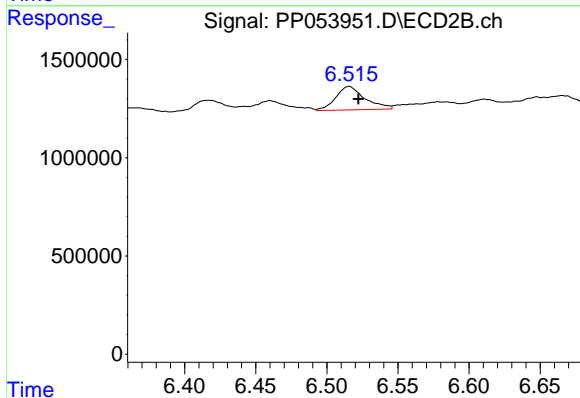
R.T.: 6.362 min  
 Delta R.T.: -0.005 min  
 Response: 1041064  
 Conc: 13.82 ng/ml



#33 AR-1260-3

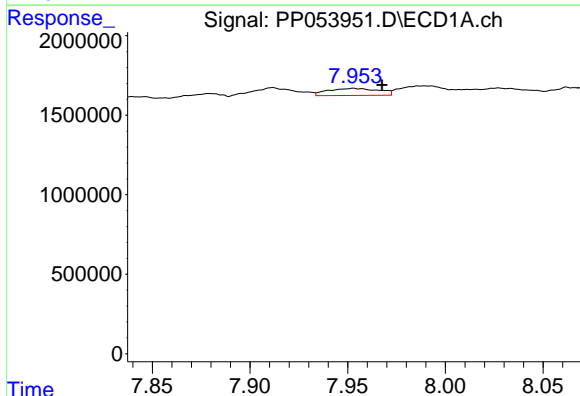
R.T.: 7.728 min  
 Delta R.T.: -0.014 min  
 Response: 1881741  
 Conc: 24.89 ng/ml

Instrument :  
 ECD\_P  
 ClientSampleId :



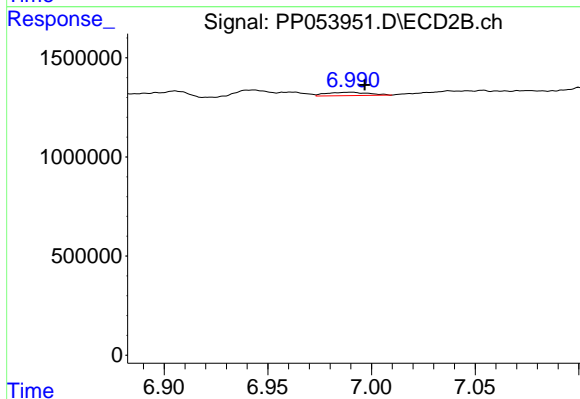
#33 AR-1260-3

R.T.: 6.516 min  
 Delta R.T.: -0.007 min  
 Response: 1709567  
 Conc: 23.59 ng/ml



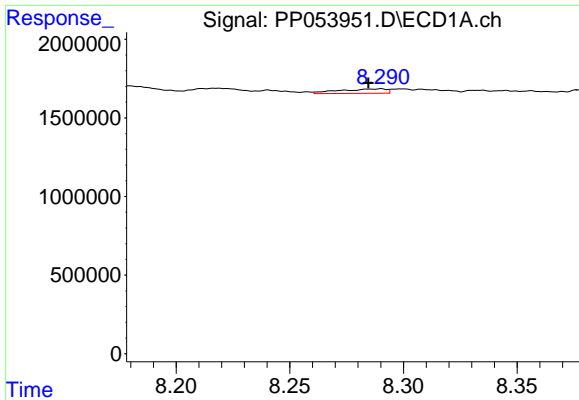
#34 AR-1260-4

R.T.: 7.953 min  
 Delta R.T.: -0.015 min  
 Response: 807215  
 Conc: 8.60 ng/ml



#34 AR-1260-4

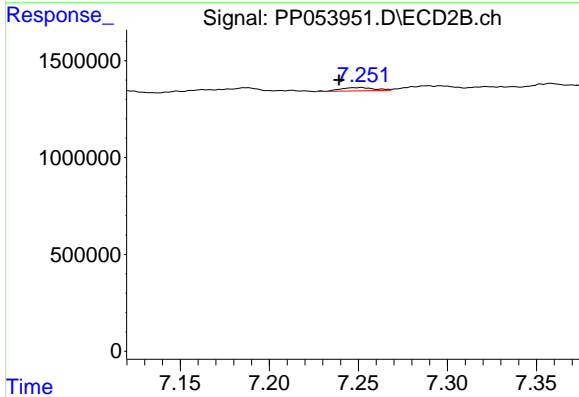
R.T.: 6.990 min  
 Delta R.T.: -0.007 min  
 Response: 242062  
 Conc: 4.46 ng/ml



#35 AR-1260-5

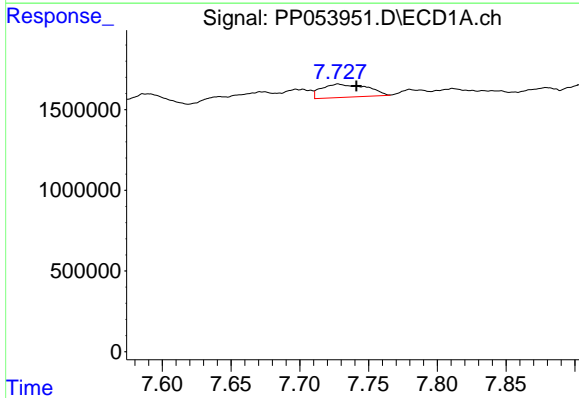
R.T.: 8.290 min  
 Delta R.T.: 0.005 min  
 Response: 399963  
 Conc: 2.52 ng/ml

Instrument :  
 ECD\_P  
 ClientSampleId :



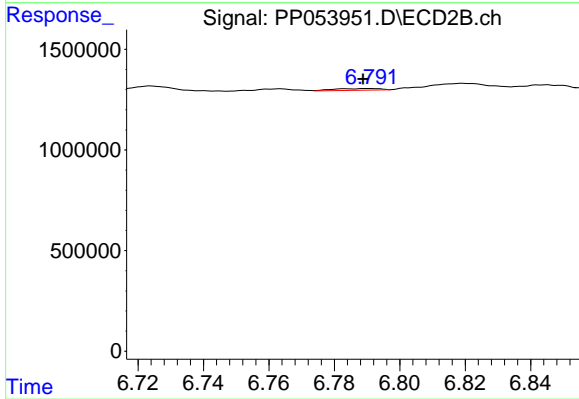
#35 AR-1260-5

R.T.: 7.251 min  
 Delta R.T.: 0.012 min  
 Response: 231553  
 Conc: 1.94 ng/ml



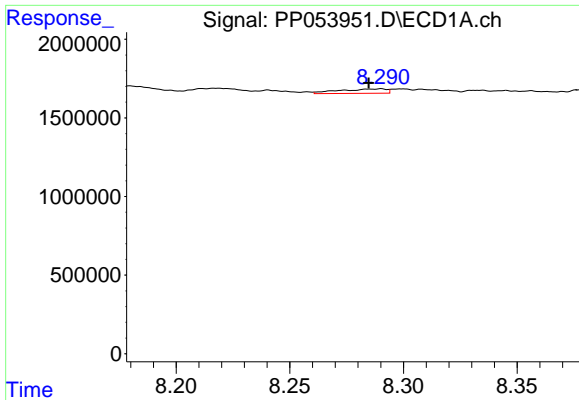
#36 AR-1262-1

R.T.: 7.728 min  
 Delta R.T.: -0.013 min  
 Response: 1881741  
 Conc: 15.72 ng/ml



#36 AR-1262-1

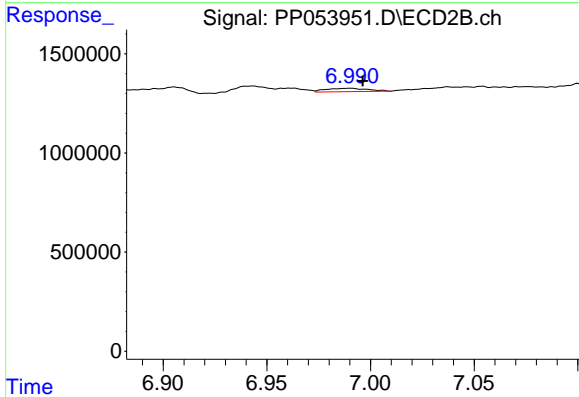
R.T.: 6.791 min  
 Delta R.T.: 0.002 min  
 Response: 86739  
 Conc: 2.43 ng/ml



#37 AR-1262-2

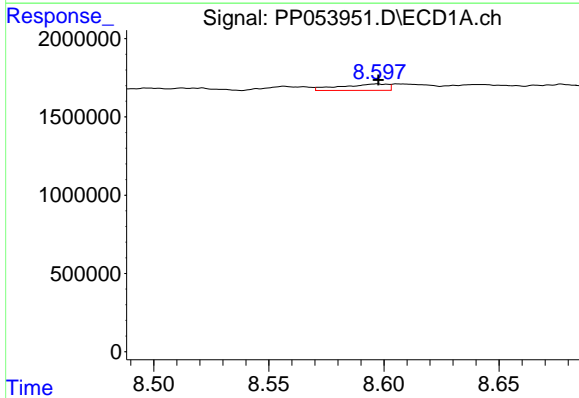
R.T.: 8.290 min  
 Delta R.T.: 0.005 min  
 Response: 399963  
 Conc: 2.09 ng/ml

Instrument :  
 ECD\_P  
 ClientSampleId :



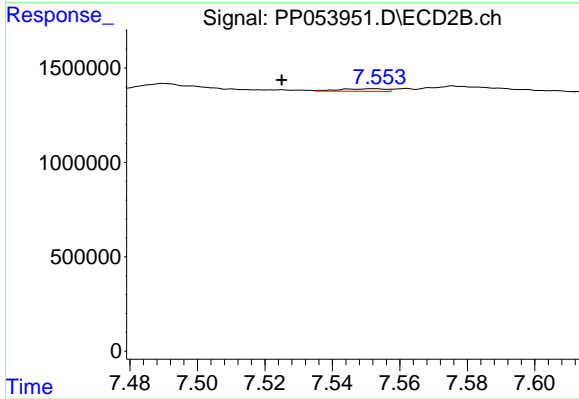
#37 AR-1262-2

R.T.: 6.990 min  
 Delta R.T.: -0.006 min  
 Response: 242062  
 Conc: 3.11 ng/ml



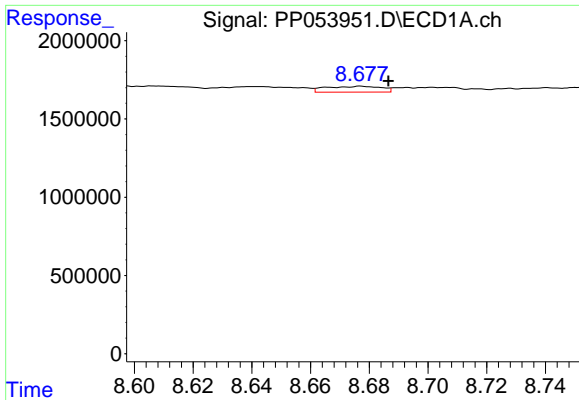
#38 AR-1262-3

R.T.: 8.597 min  
 Delta R.T.: 0.000 min  
 Response: 586048  
 Conc: 4.23 ng/ml



#38 AR-1262-3

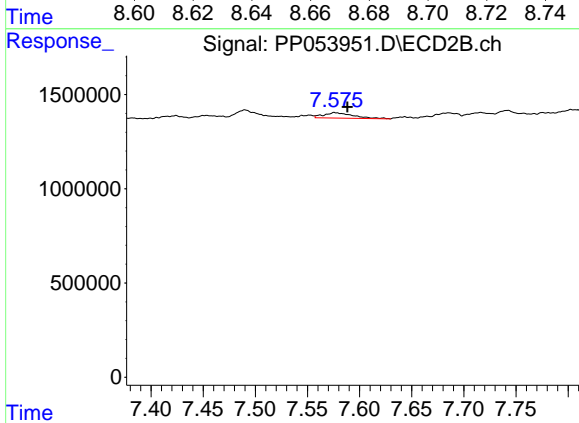
R.T.: 7.552 min  
 Delta R.T.: 0.027 min  
 Response: 125277  
 Conc: 1.99 ng/ml



#39 AR-1262-4

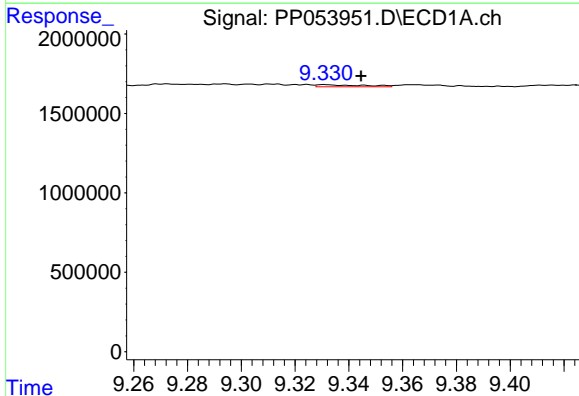
R.T.: 8.677 min  
 Delta R.T.: -0.009 min  
 Response: 490281  
 Conc: 7.88 ng/ml

Instrument :  
 ECD\_P  
 ClientSampleId :



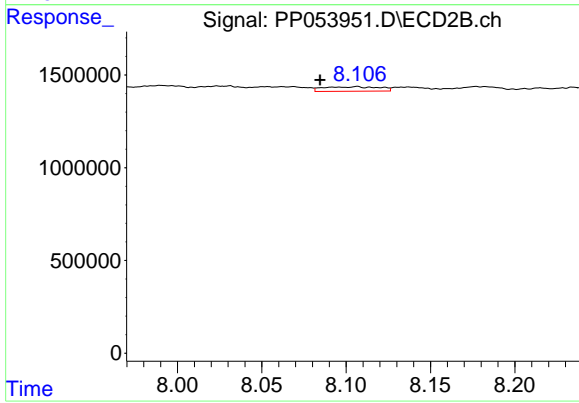
#39 AR-1262-4

R.T.: 7.576 min  
 Delta R.T.: -0.012 min  
 Response: 569040  
 Conc: 4.98 ng/ml



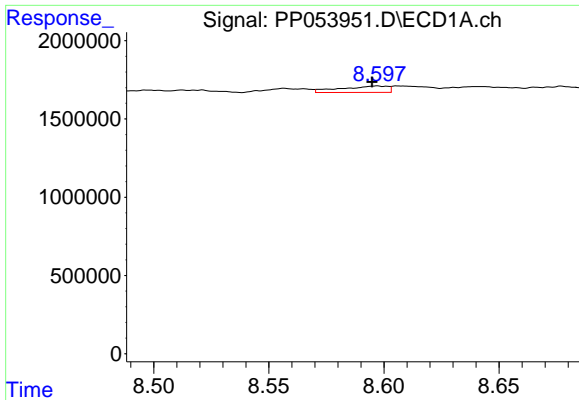
#40 AR-1262-5

R.T.: 9.331 min  
 Delta R.T.: -0.014 min  
 Response: 158533  
 Conc: 2.24 ng/ml



#40 AR-1262-5

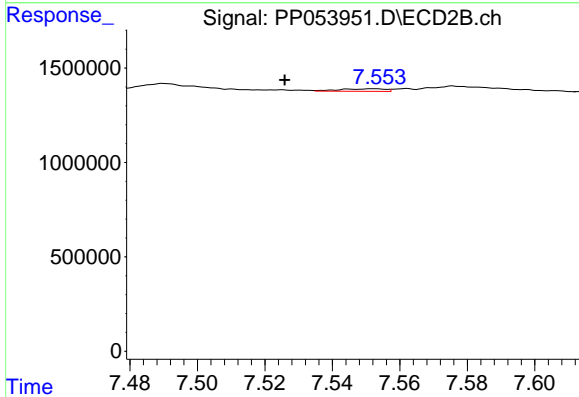
R.T.: 8.106 min  
 Delta R.T.: 0.022 min  
 Response: 561675  
 Conc: 11.27 ng/ml



#41 AR-1268-1

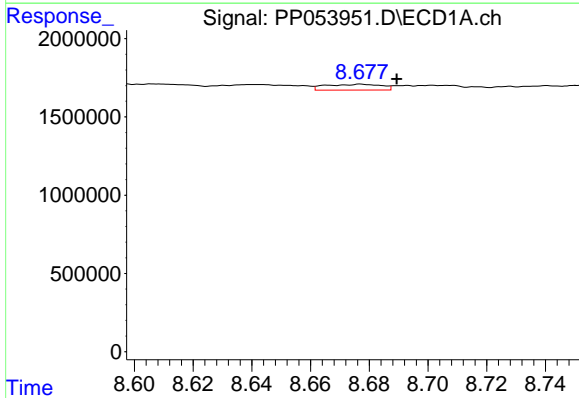
R.T.: 8.597 min  
 Delta R.T.: 0.002 min  
 Response: 586048  
 Conc: 2.40 ng/ml

Instrument :  
 ECD\_P  
 ClientSampleId :



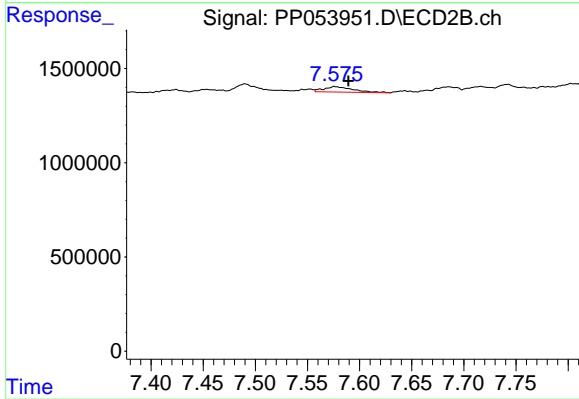
#41 AR-1268-1

R.T.: 7.552 min  
 Delta R.T.: 0.026 min  
 Response: 125277  
 Conc: 0.69 ng/ml



#42 AR-1268-2

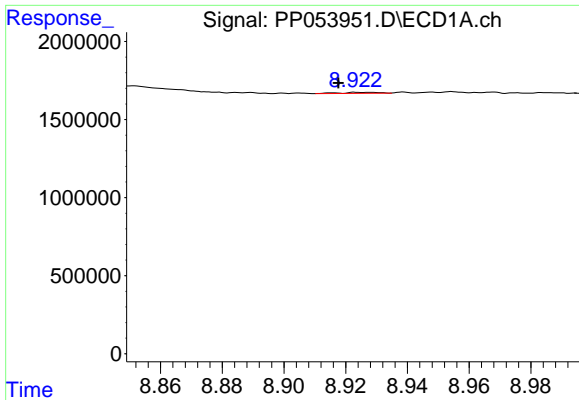
R.T.: 8.677 min  
 Delta R.T.: -0.012 min  
 Response: 490281  
 Conc: 2.16 ng/ml



#42 AR-1268-2

R.T.: 7.576 min  
 Delta R.T.: -0.013 min  
 Response: 569040  
 Conc: 3.33 ng/ml

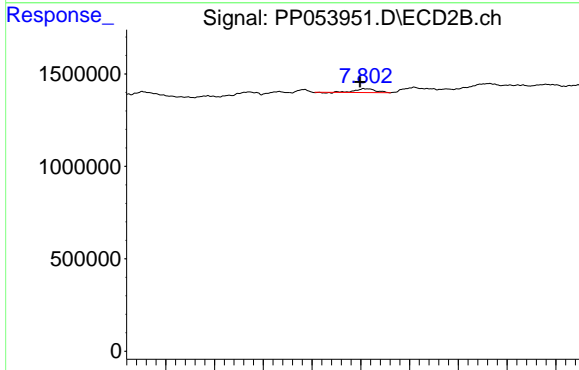




#43 AR-1268-3

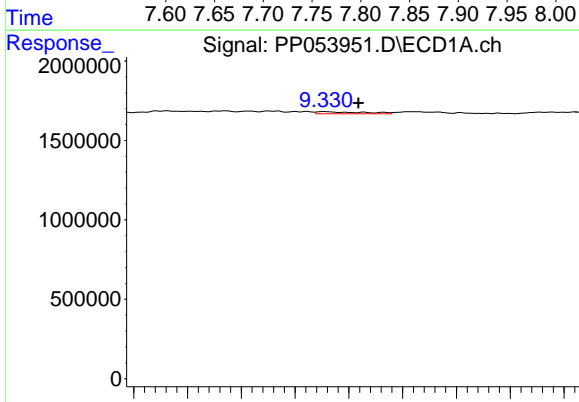
R.T.: 8.928 min  
 Delta R.T.: 0.010 min  
 Response: 55472  
 Conc: 0.29 ng/ml

Instrument :  
 ECD\_P  
 ClientSampleId :



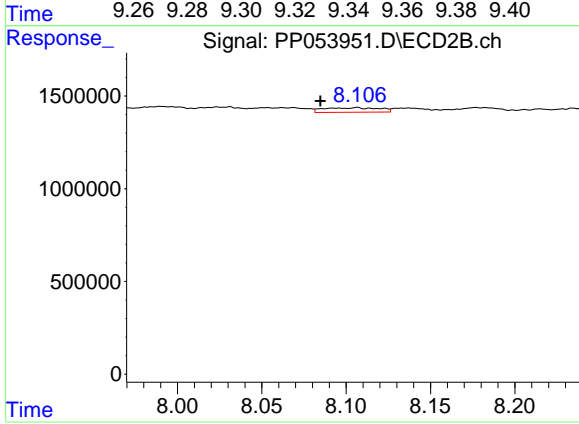
#43 AR-1268-3

R.T.: 7.803 min  
 Delta R.T.: 0.004 min  
 Response: 298801  
 Conc: 2.02 ng/ml



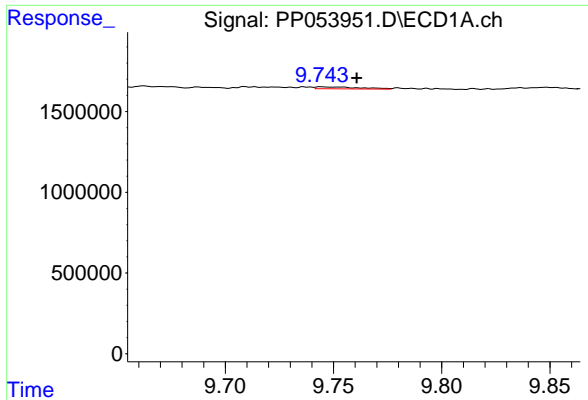
#44 AR-1268-4

R.T.: 9.331 min  
 Delta R.T.: -0.012 min  
 Response: 158533  
 Conc: 2.06 ng/ml



#44 AR-1268-4

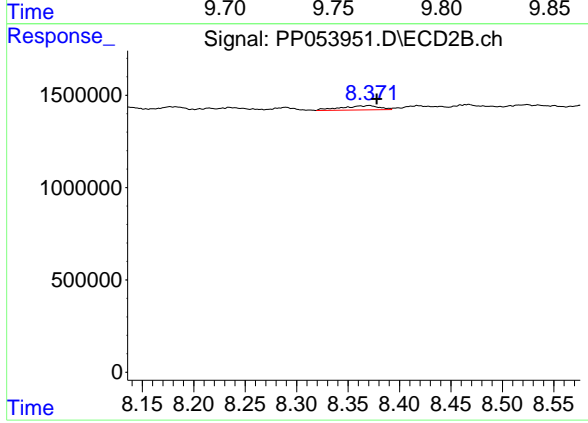
R.T.: 8.106 min  
 Delta R.T.: 0.022 min  
 Response: 561675  
 Conc: 10.08 ng/ml



#45 AR-1268-5

R.T.: 9.745 min  
 Delta R.T.: -0.016 min  
 Response: 166276  
 Conc: 0.28 ng/ml

Instrument :  
 ECD\_P  
 ClientSampleId :



#45 AR-1268-5

R.T.: 8.370 min  
 Delta R.T.: -0.007 min  
 Response: 587560  
 Conc: 1.24 ng/ml