

Data Path : Z:\pestpcbsrv\HPCHEM1\ECD\_P\Data\PP122222\  
 Data File : PP053959.D  
 Signal(s) : Signal #1: ECD1A.ch Signal #2: ECD2B.ch  
 Acq On : 22 Dec 2022 17:01  
 Operator : YP\AJ  
 Sample : I.BLK  
 Misc :  
 ALS Vial : 2 Sample Multiplier: 1

Instrument :  
 ECD\_P  
 ClientSampleId :

Integration File signal 1: autoint1.e  
 Integration File signal 2: autoint2.e  
 Quant Time: Dec 22 17:33:49 2022  
 Quant Method : Z:\pestpcbsrv\HPCHEM1\ECD\_P\methods\PP121322.M  
 Quant Title : GC EXTRACTABLES  
 QLast Update : Wed Dec 14 05:38:40 2022  
 Response via : Initial Calibration  
 Integrator: ChemStation

Volume Inj. : 2 µl  
 Signal #1 Phase : ZB-MR1 Signal #2 Phase: ZB-MR2  
 Signal #1 Info : 30Mx0.32mmx 0.50µ Signal #2 Info : 30M x 0.32mm x 0.25µm

Compound	RT#1	RT#2	Resp#1	Resp#2	ng/ml	ng/ml
System Monitoring Compounds						
1) SA Tetrachlo...	4.338	3.589	49477736	35270580	23.563	22.584
2) SA Decachlor...	10.099	8.621	40690691	34066061	23.967	24.389
Target Compounds						
3) L1 AR-1016-1	5.515	4.693	60522	398691	0.893	8.681 #
4) L1 AR-1016-2	5.534	4.693	58123	398691	0.584	6.363 #
5) L1 AR-1016-3	5.583	0.000	560708	0	8.872	N.D. #
6) L1 AR-1016-4	0.000	4.931	0	144133	N.D.	4.837 #
8) L2 AR-1221-1	4.549	3.793f	107335	122553	4.166	6.329 #
9) L2 AR-1221-2	4.645	3.889	789956	568516	40.575	38.893
10) L2 AR-1221-3	4.712	3.959	173623	147158	2.988	3.308
11) L3 AR-1232-1	4.712	3.959	173623	147158	3.876	4.276
12) L3 AR-1232-2	5.243	4.693	30750	398691	1.195	13.358 #
13) L3 AR-1232-3	5.534	0.000	58123	0	1.238	N.D. #
15) L3 AR-1232-5	5.783	5.141	80605	-43495	4.371	N.D. #
16) L4 AR-1242-1	5.515	4.693	60522	398691	1.155	11.258 #
17) L4 AR-1242-2	5.534	4.693	58123	398691	0.763	8.299 #
18) L4 AR-1242-3	5.583	0.000	560708	0	11.444	N.D. #
20) L4 AR-1242-5	6.431	5.511f	343772	1095750	8.429	35.899 #
21) L5 AR-1248-1	5.515	4.693	60522	398691	1.436	14.015 #
22) L5 AR-1248-2	5.783	4.931	80605	144133	1.275	3.484 #
23) L5 AR-1248-3	5.967f	0.000	51607	0	0.737	N.D. #
24) L5 AR-1248-4	6.397	5.141	362035	-43495	5.133	N.D. #
25) L5 AR-1248-5	6.431	5.511f	343772	1095750	4.879	29.182 #
26) L6 AR-1254-1	6.370	5.511f	715384	1095750	9.232	16.733 #
27) L6 AR-1254-2	6.586	5.650	268339	1268625	2.306	21.753 #
28) L6 AR-1254-3	6.956	6.045	421696	1458981	3.600	16.585 #
29) L6 AR-1254-4	7.248	6.273	134626	692341	1.698	15.112 #
30) L6 AR-1254-5	7.667	6.687	267428	141855	2.742	1.820 #
31) L7 AR-1260-1	7.121	6.177	141751	1168959	1.468	17.921 #
32) L7 AR-1260-2	7.391	6.353	711548	518700	6.441	6.888
33) L7 AR-1260-3	7.743	6.503f	119059	411203	1.575	5.673 #
34) L7 AR-1260-4	7.967	0.000	301244	0	3.210	N.D. #
35) L7 AR-1260-5	8.280	7.228	410623	235373	2.590	1.968
36) L8 AR-1262-1	7.743	6.812f	119059	312880	0.995	8.773 #
37) L8 AR-1262-2	8.280	0.000	410623	0	2.141	N.D. #
38) L8 AR-1262-3	8.602	7.514	96930	121997	0.700	1.936 #
39) L8 AR-1262-4	8.683	7.575	115508	151233	1.856	1.323 #
40) L8 AR-1262-5	9.352	0.000	78652	0	1.113	N.D. #
41) L9 AR-1268-1	8.602	7.514	96930	121997	0.397	0.674 #
42) L9 AR-1268-2	8.683	7.575	115508	151233	0.508	0.886 #
43) L9 AR-1268-3	8.914	0.000	75901	0	0.396	N.D. #
44) L9 AR-1268-4	9.352	0.000	78652	0	1.022	N.D. #

Data Path : Z:\pestpcbsrv\HPCHEM1\ECD\_P\Data\PP122222\  
 Data File : PP053959.D  
 Signal(s) : Signal #1: ECD1A.ch Signal #2: ECD2B.ch  
 Acq On : 22 Dec 2022 17:01  
 Operator : YP\AJ  
 Sample : I.BLK  
 Misc :  
 ALS Vial : 2 Sample Multiplier: 1

Instrument :  
 ECD\_P  
 ClientSampleId :

Integration File signal 1: autoint1.e  
 Integration File signal 2: autoint2.e  
 Quant Time: Dec 22 17:33:49 2022  
 Quant Method : Z:\pestpcbsrv\HPCHEM1\ECD\_P\methods\PP121322.M  
 Quant Title : GC EXTRACTABLES  
 QLast Update : Wed Dec 14 05:38:40 2022  
 Response via : Initial Calibration  
 Integrator: ChemStation

Volume Inj. : 2 µl  
 Signal #1 Phase : ZB-MR1 Signal #2 Phase: ZB-MR2  
 Signal #1 Info : 30Mx0.32mmx 0.50µ Signal #2 Info : 30M x 0.32mm x 0.25µm

Compound	RT#1	RT#2	Resp#1	Resp#2	ng/ml	ng/ml
45) L9 AR-1268-5	9.754	8.367	368679	136368	0.627	0.288 #

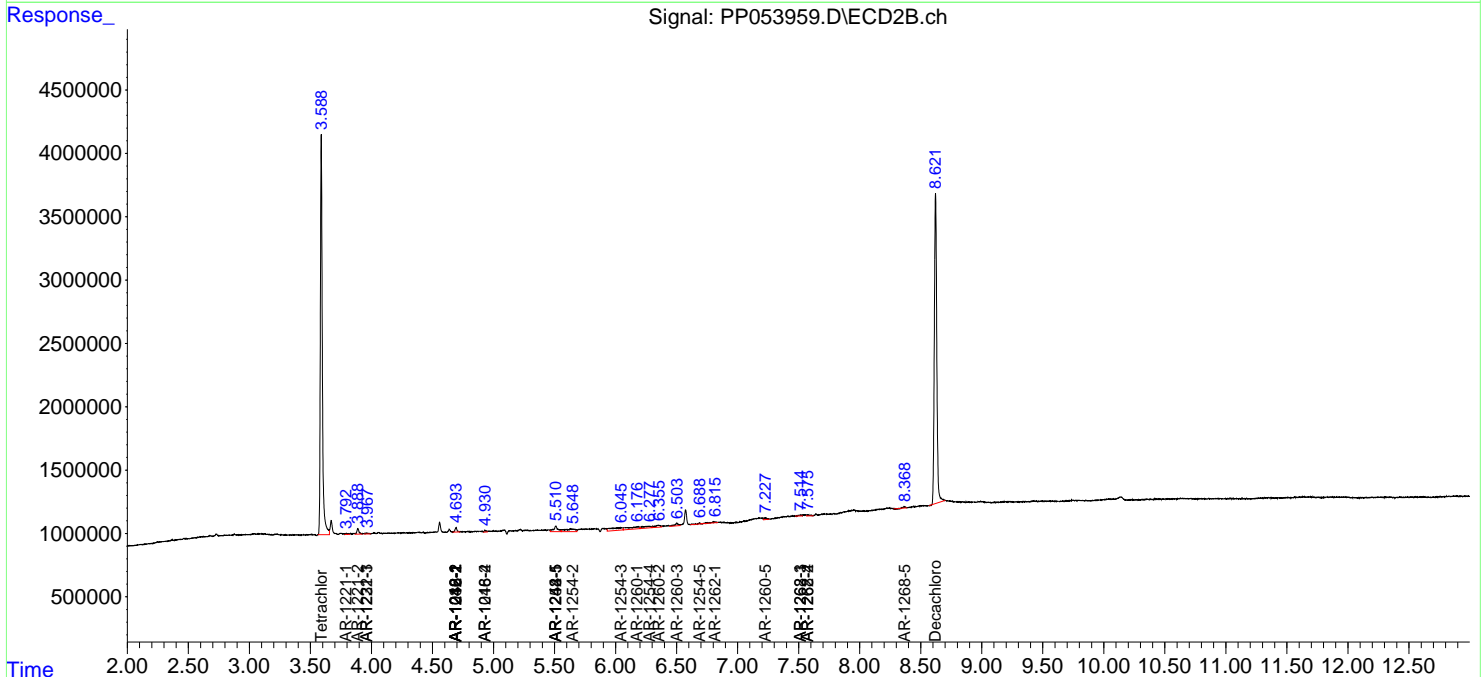
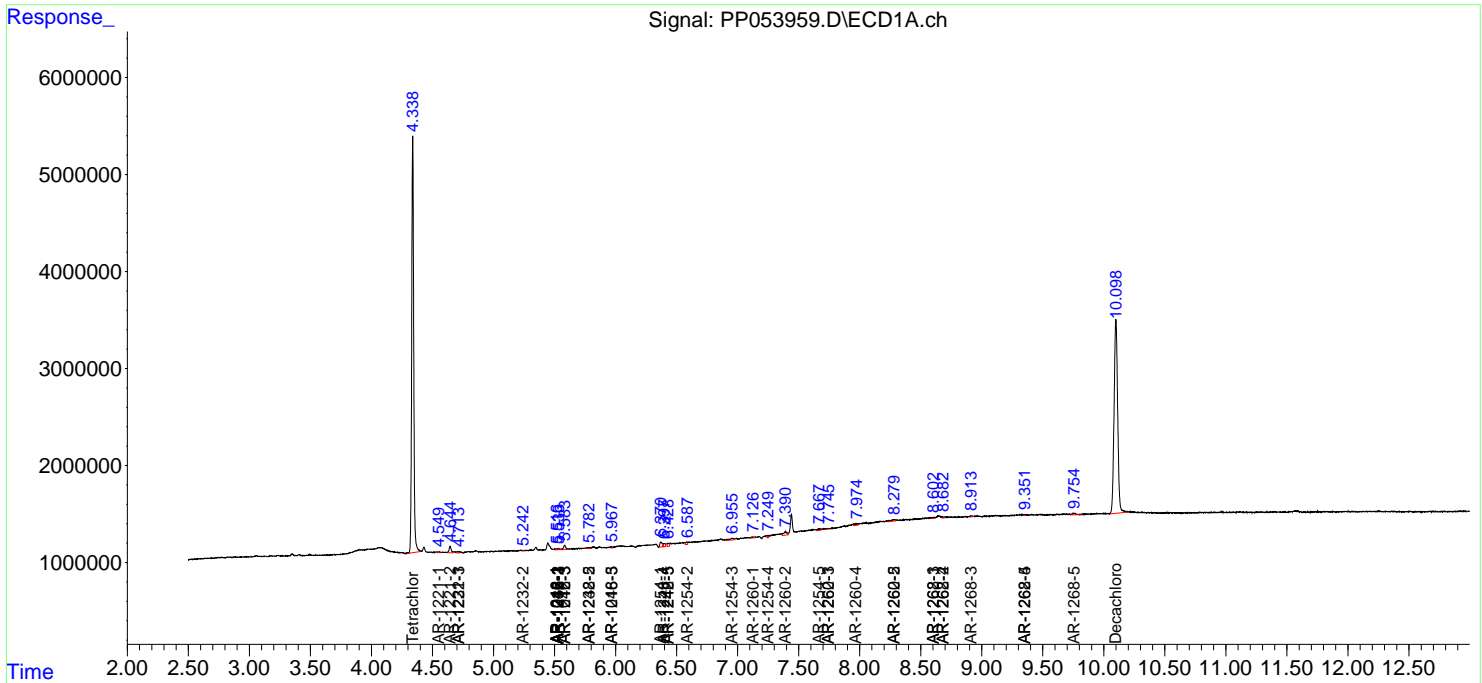
(f)=RT Delta > 1/2 Window (#)=Amounts differ by > 25% (m)=manual int.

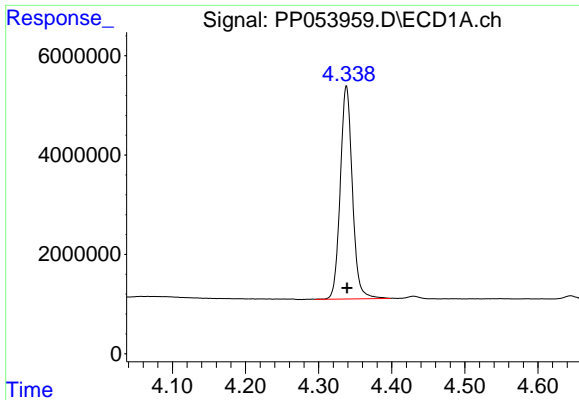
Data Path : Z:\pestpcbsrv\HPCHEM1\ECD\_P\Data\PP122222\  
 Data File : PP053959.D  
 Signal(s) : Signal #1: ECD1A.ch Signal #2: ECD2B.ch  
 Acq On : 22 Dec 2022 17:01  
 Operator : YP\AJ  
 Sample : I.BLK  
 Misc :  
 ALS Vial : 2 Sample Multiplier: 1

Instrument :  
 ECD\_P  
 ClientSampleId :

Integration File signal 1: autoint1.e  
 Integration File signal 2: autoint2.e  
 Quant Time: Dec 22 17:33:49 2022  
 Quant Method : Z:\pestpcbsrv\HPCHEM1\ECD\_P\methods\PP121322.M  
 Quant Title : GC EXTRACTABLES  
 QLast Update : Wed Dec 14 05:38:40 2022  
 Response via : Initial Calibration  
 Integrator: ChemStation

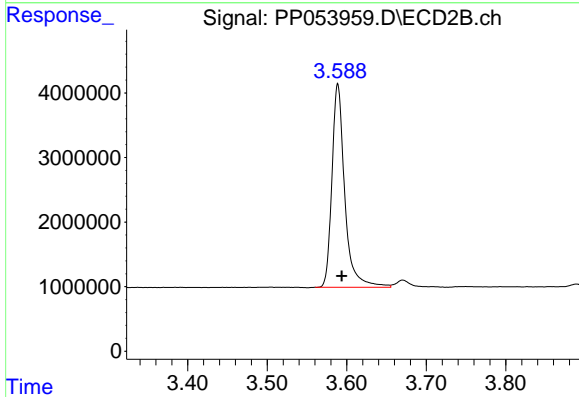
Volume Inj. : 2 µl  
 Signal #1 Phase : ZB-MR1 Signal #2 Phase: ZB-MR2  
 Signal #1 Info : 30Mx0.32mmx 0.50µ Signal #2 Info : 30M x 0.32mm x 0.25µm



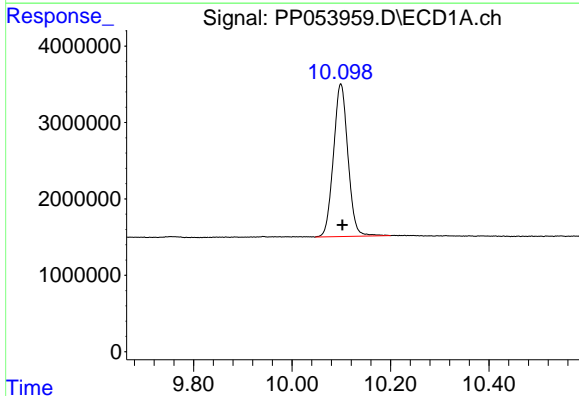


#1 Tetrachloro-m-xylene  
 R.T.: 4.338 min  
 Delta R.T.: 0.000 min  
 Response: 49477736  
 Conc: 23.56 ng/ml

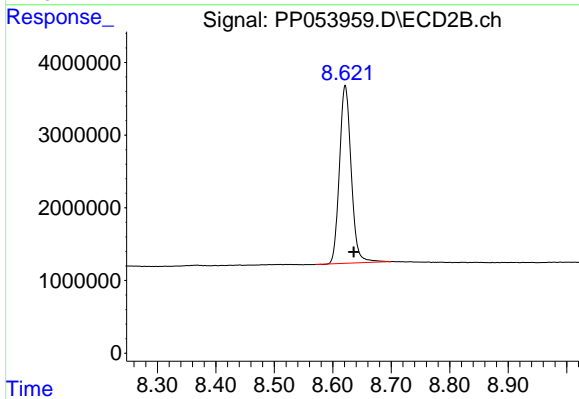
Instrument :  
 ECD\_P  
 ClientSampleId :



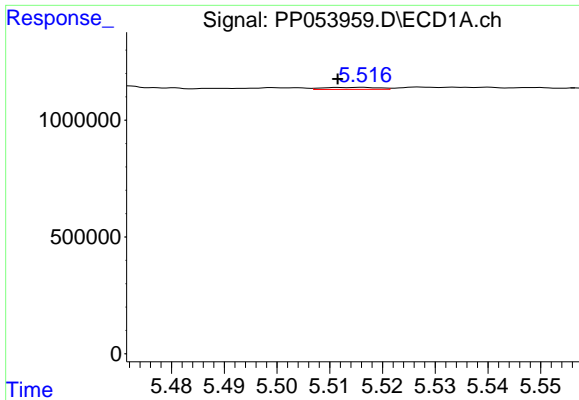
#1 Tetrachloro-m-xylene  
 R.T.: 3.589 min  
 Delta R.T.: -0.005 min  
 Response: 35270580  
 Conc: 22.58 ng/ml



#2 Decachlorobiphenyl  
 R.T.: 10.099 min  
 Delta R.T.: -0.003 min  
 Response: 40690691  
 Conc: 23.97 ng/ml



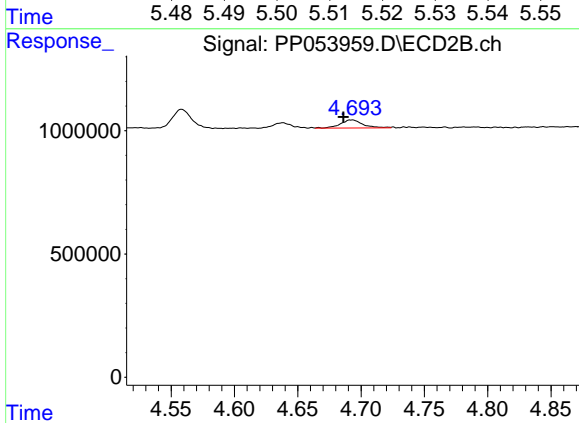
#2 Decachlorobiphenyl  
 R.T.: 8.621 min  
 Delta R.T.: -0.014 min  
 Response: 34066061  
 Conc: 24.39 ng/ml



#3 AR-1016-1

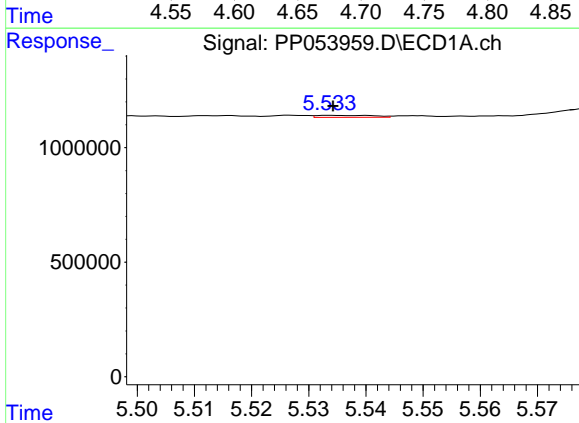
R.T.: 5.515 min  
 Delta R.T.: 0.004 min  
 Response: 60522  
 Conc: 0.89 ng/ml

Instrument :  
 ECD\_P  
 ClientSampleId :



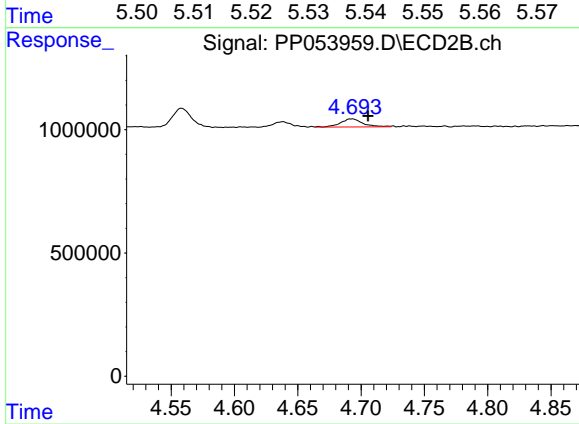
#3 AR-1016-1

R.T.: 4.693 min  
 Delta R.T.: 0.007 min  
 Response: 398691  
 Conc: 8.68 ng/ml



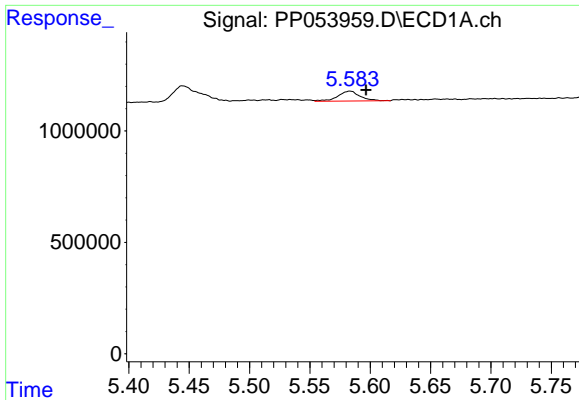
#4 AR-1016-2

R.T.: 5.534 min  
 Delta R.T.: 0.000 min  
 Response: 58123  
 Conc: 0.58 ng/ml



#4 AR-1016-2

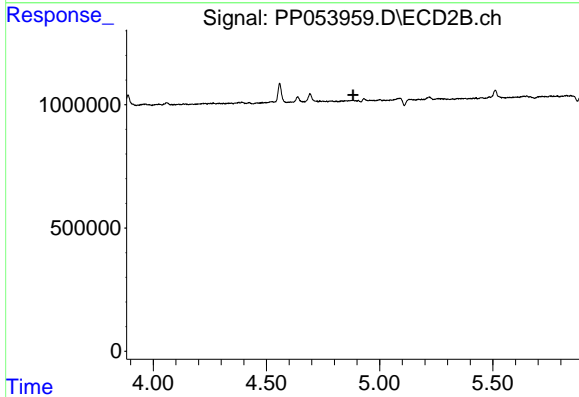
R.T.: 4.693 min  
 Delta R.T.: -0.013 min  
 Response: 398691  
 Conc: 6.36 ng/ml



#5 AR-1016-3

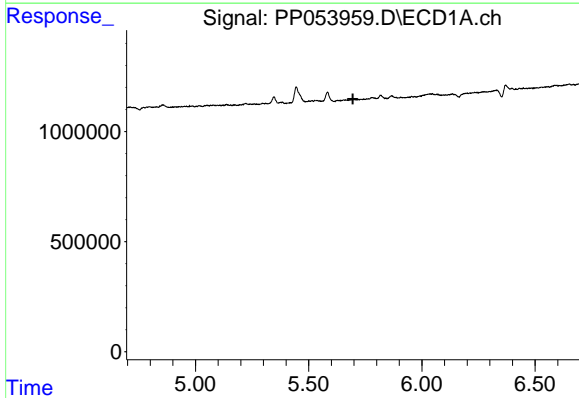
R.T.: 5.583 min  
 Delta R.T.: -0.013 min  
 Response: 560708  
 Conc: 8.87 ng/ml

Instrument :  
 ECD\_P  
 ClientSampleId :



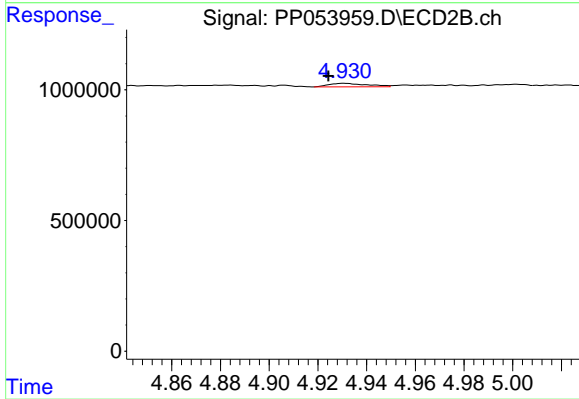
#5 AR-1016-3

R.T.: 0.000 min  
 Exp R.T. : 4.882 min  
 Response: 0  
 Conc: N.D.



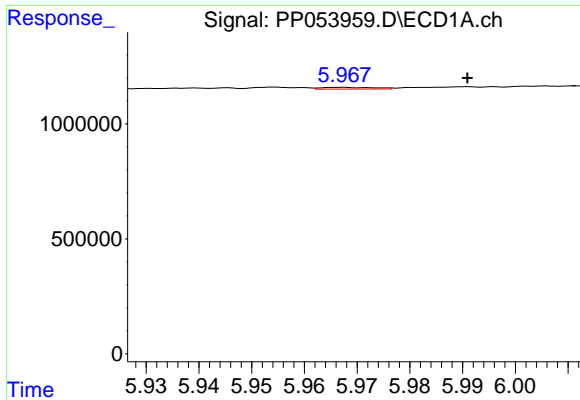
#6 AR-1016-4

R.T.: 0.000 min  
 Exp R.T. : 5.695 min  
 Response: 0  
 Conc: N.D.



#6 AR-1016-4

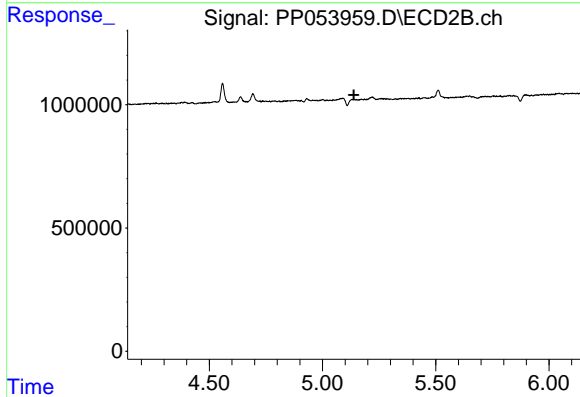
R.T.: 4.931 min  
 Delta R.T.: 0.006 min  
 Response: 144133  
 Conc: 4.84 ng/ml



#7 AR-1016-5

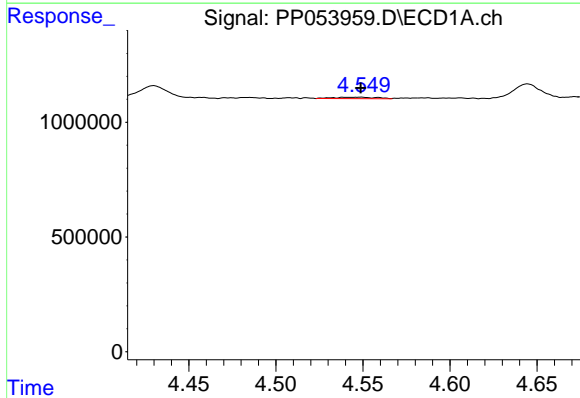
R.T.: 5.967 min  
 Delta R.T.: -0.024 min  
 Response: 51607  
 Conc: 0.98 ng/ml

Instrument :  
 ECD\_P  
 ClientSampleId :



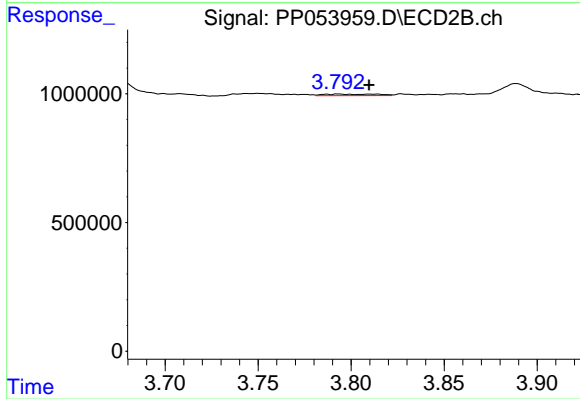
#7 AR-1016-5

R.T.: 5.141 min  
 Delta R.T.: 0.002 min  
 Response: -43495  
 Conc: N.D.



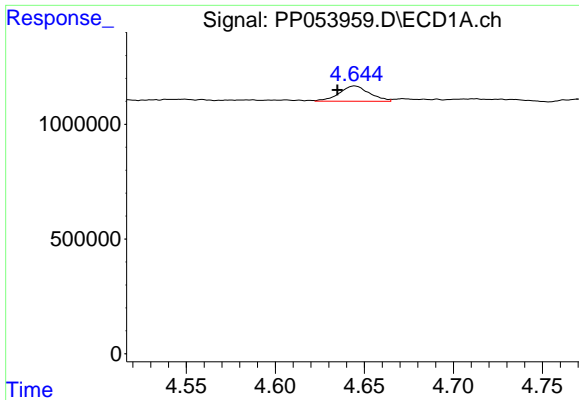
#8 AR-1221-1

R.T.: 4.549 min  
 Delta R.T.: 0.000 min  
 Response: 107335  
 Conc: 4.17 ng/ml



#8 AR-1221-1

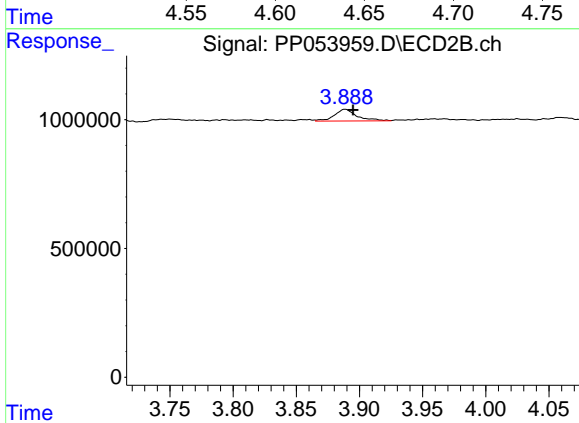
R.T.: 3.793 min  
 Delta R.T.: -0.017 min  
 Response: 122553  
 Conc: 6.33 ng/ml



#9 AR-1221-2

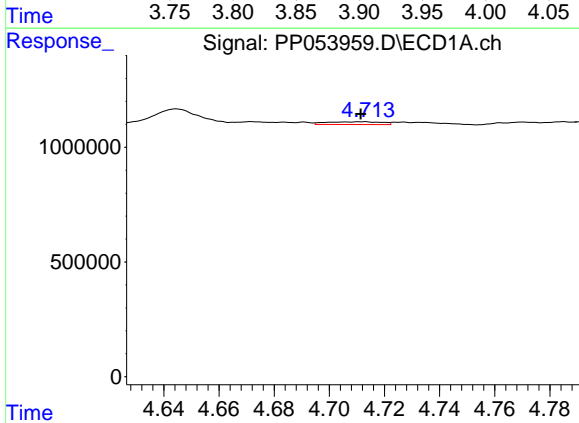
R.T.: 4.645 min  
 Delta R.T.: 0.010 min  
 Response: 789956  
 Conc: 40.58 ng/ml

Instrument :  
 ECD\_P  
 ClientSampleId :



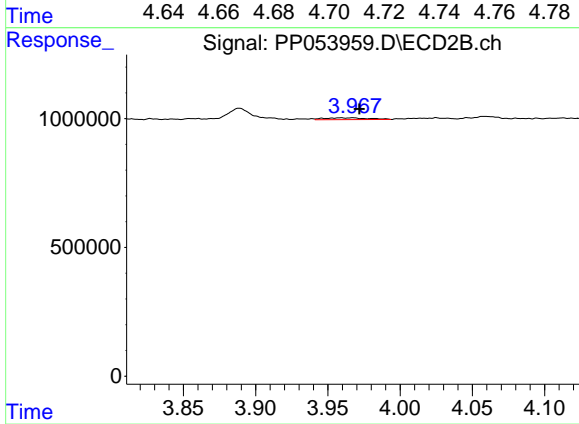
#9 AR-1221-2

R.T.: 3.889 min  
 Delta R.T.: -0.006 min  
 Response: 568516  
 Conc: 38.89 ng/ml



#10 AR-1221-3

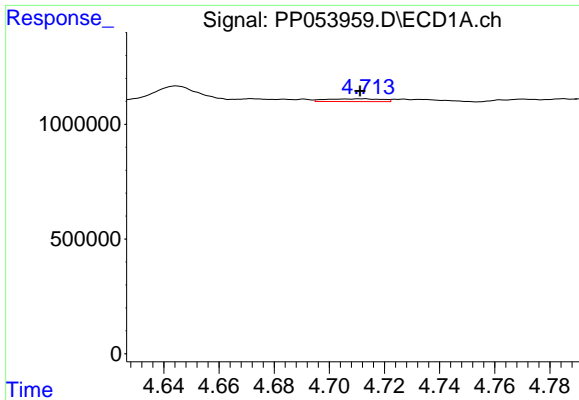
R.T.: 4.712 min  
 Delta R.T.: 0.000 min  
 Response: 173623  
 Conc: 2.99 ng/ml



#10 AR-1221-3

R.T.: 3.959 min  
 Delta R.T.: -0.013 min  
 Response: 147158  
 Conc: 3.31 ng/ml

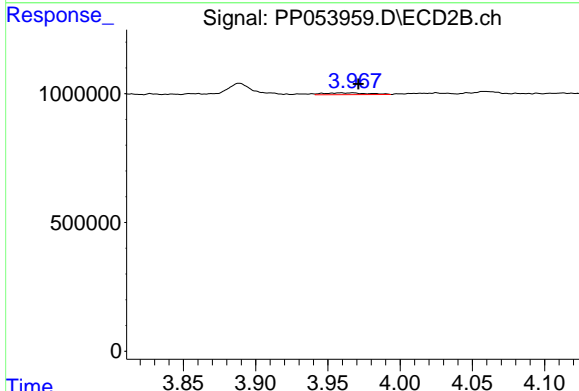




#11 AR-1232-1

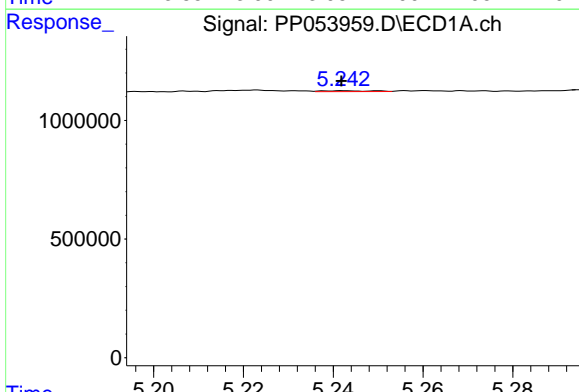
R.T.: 4.712 min  
 Delta R.T.: 0.000 min  
 Response: 173623  
 Conc: 3.88 ng/ml

Instrument :  
 ECD\_P  
 ClientSampleId :



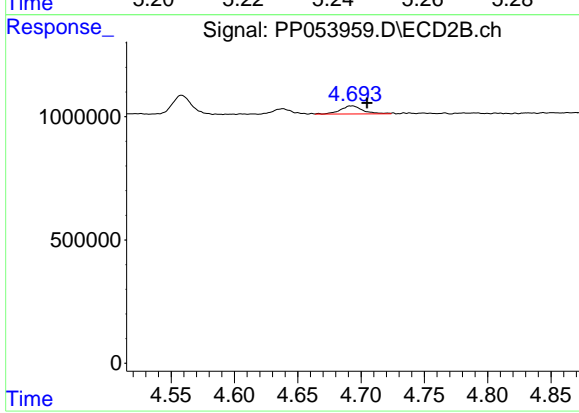
#11 AR-1232-1

R.T.: 3.959 min  
 Delta R.T.: -0.012 min  
 Response: 147158  
 Conc: 4.28 ng/ml



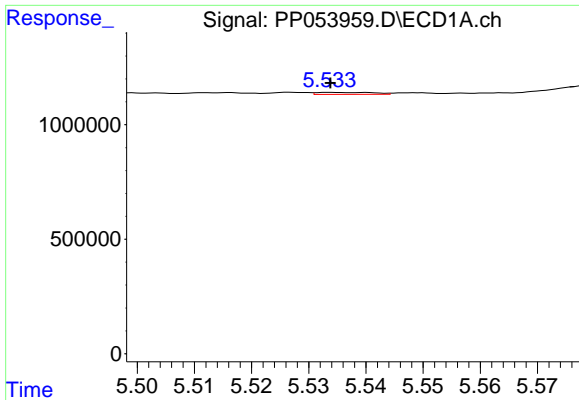
#12 AR-1232-2

R.T.: 5.243 min  
 Delta R.T.: 0.000 min  
 Response: 30750  
 Conc: 1.20 ng/ml



#12 AR-1232-2

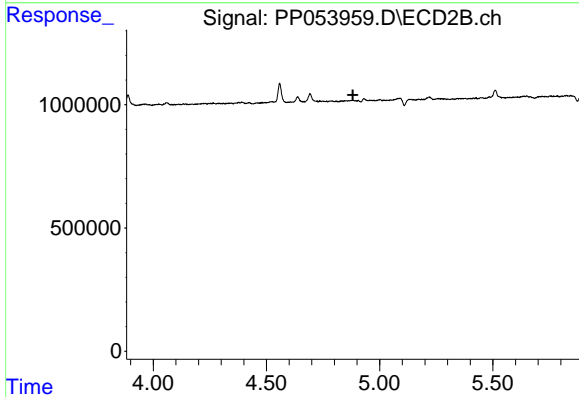
R.T.: 4.693 min  
 Delta R.T.: -0.012 min  
 Response: 398691  
 Conc: 13.36 ng/ml



#13 AR-1232-3

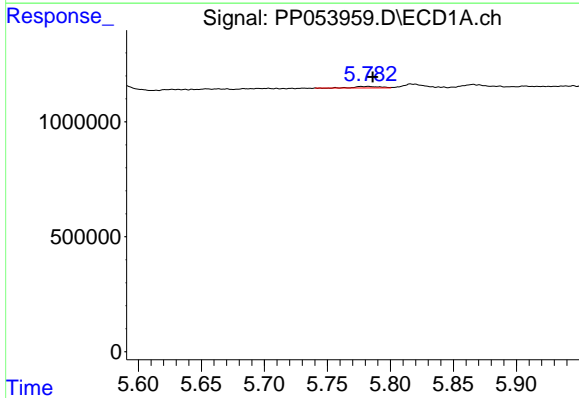
R.T.: 5.534 min  
 Delta R.T.: 0.000 min  
 Response: 58123  
 Conc: 1.24 ng/ml

Instrument :  
 ECD\_P  
 ClientSampleId :



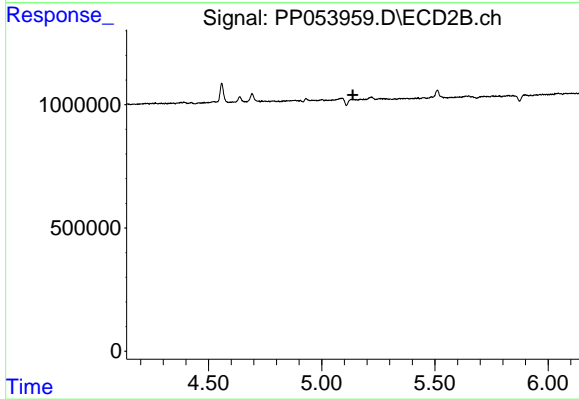
#13 AR-1232-3

R.T.: 0.000 min  
 Exp R.T. : 4.882 min  
 Response: 0  
 Conc: N.D.



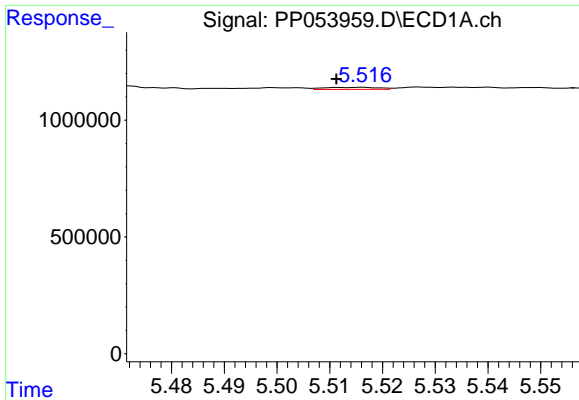
#15 AR-1232-5

R.T.: 5.783 min  
 Delta R.T.: -0.004 min  
 Response: 80605  
 Conc: 4.37 ng/ml



#15 AR-1232-5

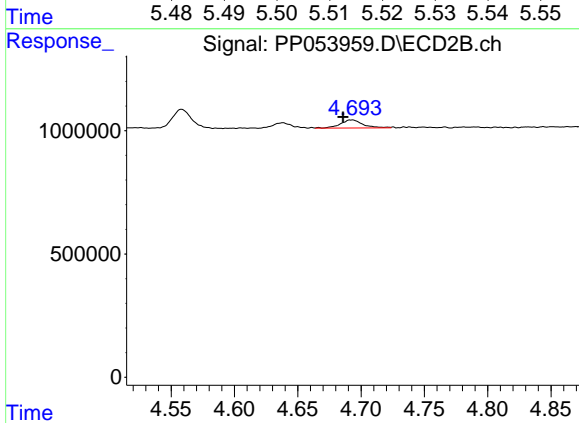
R.T.: 5.141 min  
 Delta R.T.: 0.003 min  
 Response: -43495  
 Conc: N.D.



#16 AR-1242-1

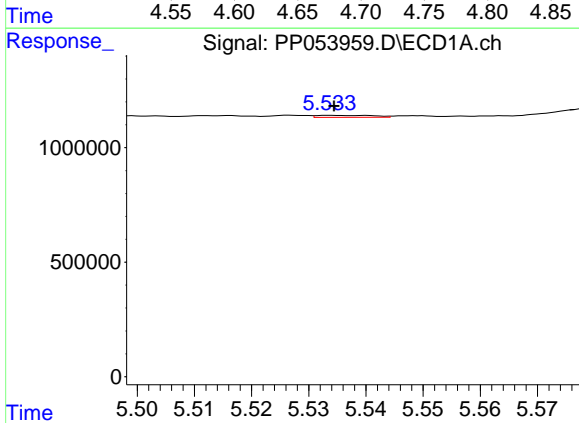
R.T.: 5.515 min  
 Delta R.T.: 0.004 min  
 Response: 60522  
 Conc: 1.16 ng/ml

Instrument :  
 ECD\_P  
 ClientSampleId :



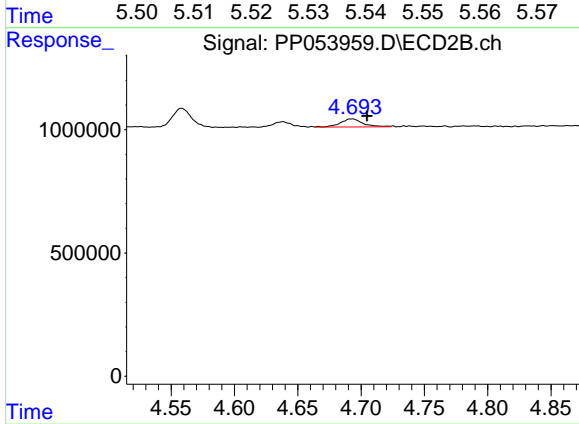
#16 AR-1242-1

R.T.: 4.693 min  
 Delta R.T.: 0.007 min  
 Response: 398691  
 Conc: 11.26 ng/ml



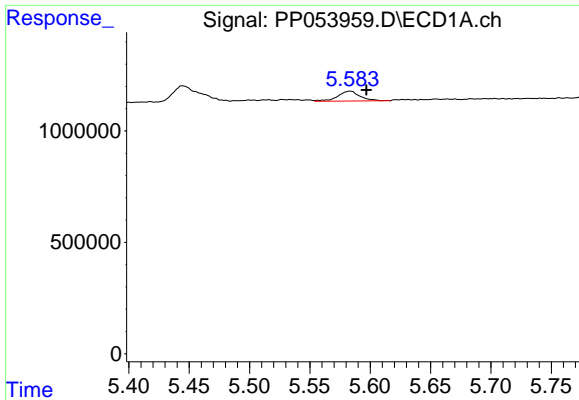
#17 AR-1242-2

R.T.: 5.534 min  
 Delta R.T.: 0.000 min  
 Response: 58123  
 Conc: 0.76 ng/ml



#17 AR-1242-2

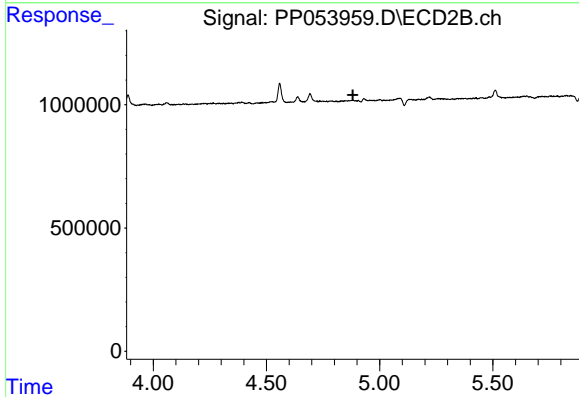
R.T.: 4.693 min  
 Delta R.T.: -0.012 min  
 Response: 398691  
 Conc: 8.30 ng/ml



#18 AR-1242-3

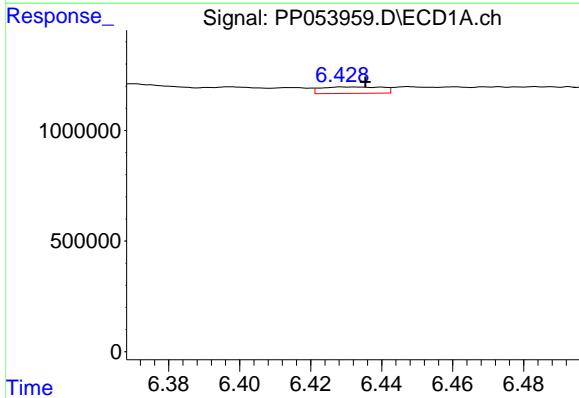
R.T.: 5.583 min  
 Delta R.T.: -0.014 min  
 Response: 560708  
 Conc: 11.44 ng/ml

Instrument :  
 ECD\_P  
 ClientSampleId :



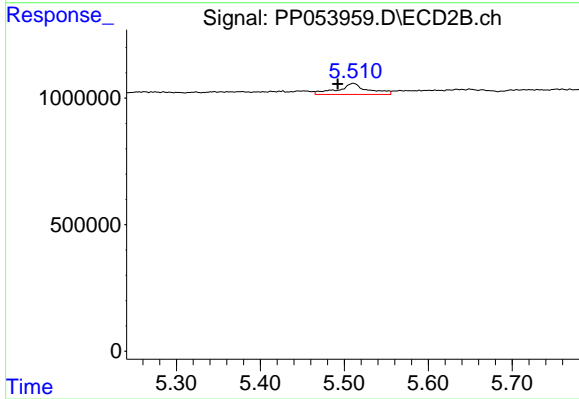
#18 AR-1242-3

R.T.: 0.000 min  
 Exp R.T. : 4.882 min  
 Response: 0  
 Conc: N.D.



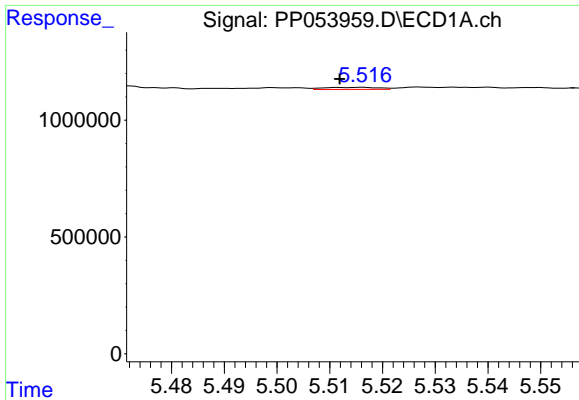
#20 AR-1242-5

R.T.: 6.431 min  
 Delta R.T.: -0.005 min  
 Response: 343772  
 Conc: 8.43 ng/ml



#20 AR-1242-5

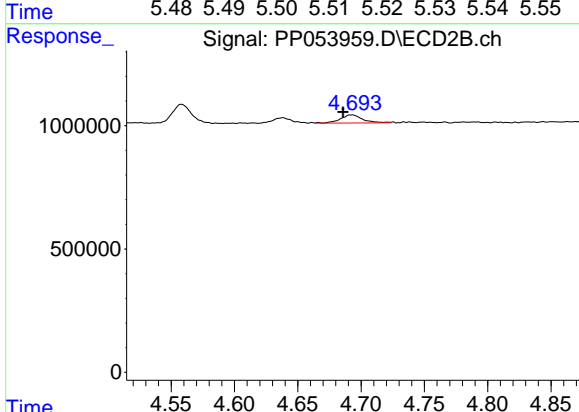
R.T.: 5.511 min  
 Delta R.T.: 0.019 min  
 Response: 1095750  
 Conc: 35.90 ng/ml



#21 AR-1248-1

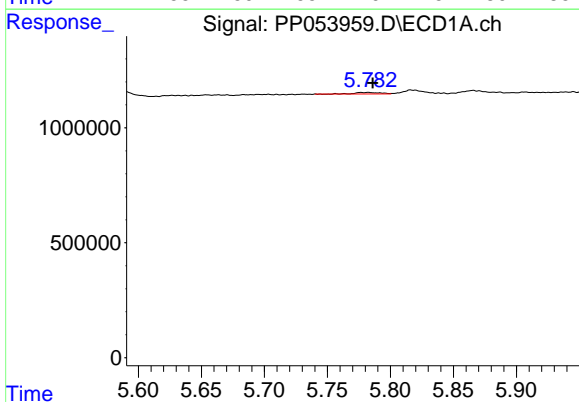
R.T.: 5.515 min  
 Delta R.T.: 0.004 min  
 Response: 60522  
 Conc: 1.44 ng/ml

Instrument :  
 ECD\_P  
 ClientSampleId :



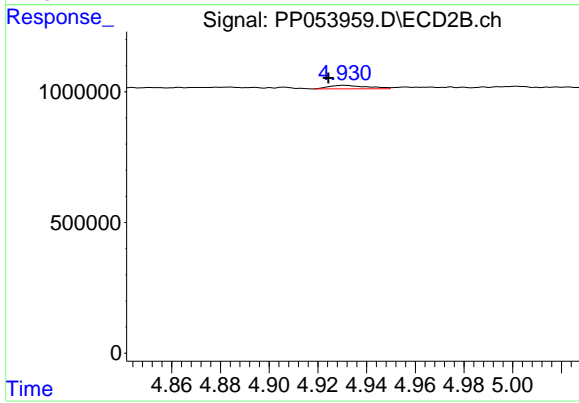
#21 AR-1248-1

R.T.: 4.693 min  
 Delta R.T.: 0.007 min  
 Response: 398691  
 Conc: 14.02 ng/ml



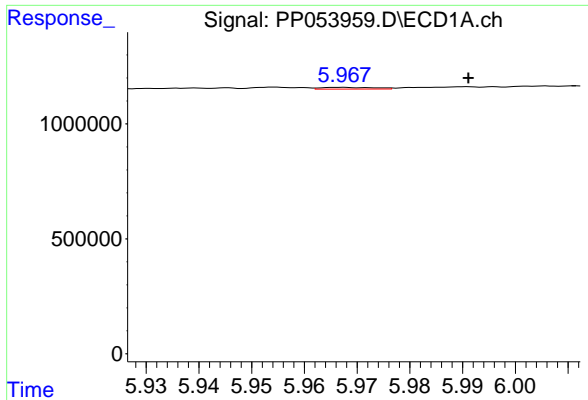
#22 AR-1248-2

R.T.: 5.783 min  
 Delta R.T.: -0.004 min  
 Response: 80605  
 Conc: 1.28 ng/ml



#22 AR-1248-2

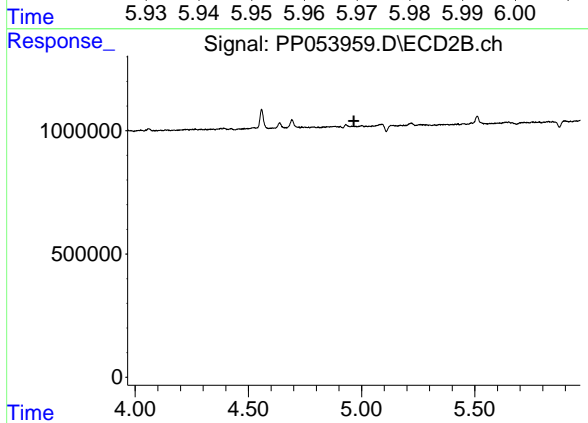
R.T.: 4.931 min  
 Delta R.T.: 0.006 min  
 Response: 144133  
 Conc: 3.48 ng/ml



#23 AR-1248-3

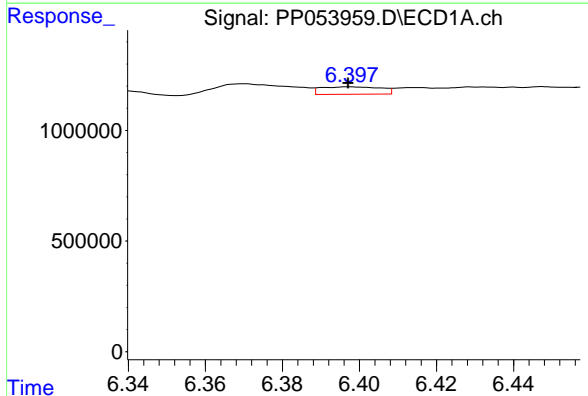
R.T.: 5.967 min  
 Delta R.T.: -0.024 min  
 Response: 51607  
 Conc: 0.74 ng/ml

Instrument :  
 ECD\_P  
 ClientSampleId :



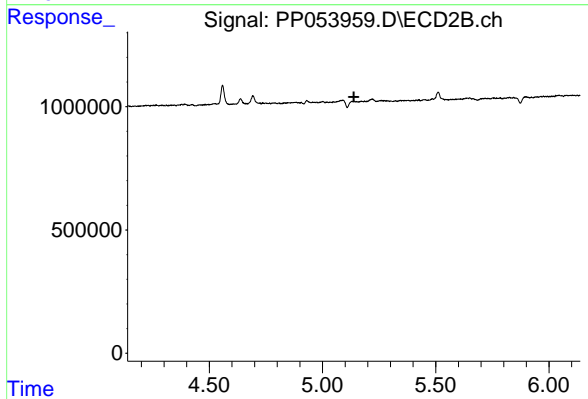
#23 AR-1248-3

R.T.: 0.000 min  
 Exp R.T. : 4.966 min  
 Response: 0  
 Conc: N.D.



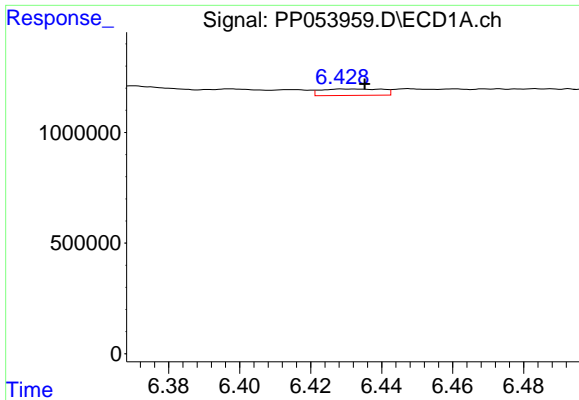
#24 AR-1248-4

R.T.: 6.397 min  
 Delta R.T.: 0.000 min  
 Response: 362035  
 Conc: 5.13 ng/ml



#24 AR-1248-4

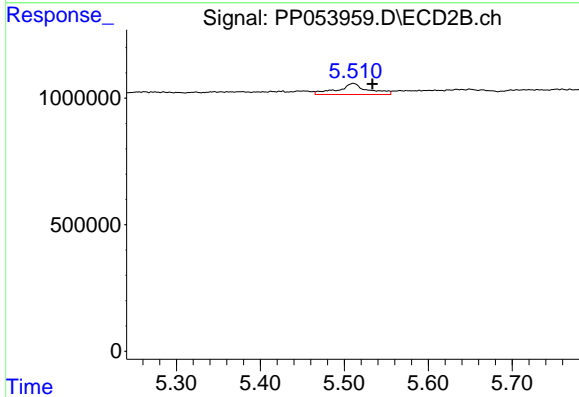
R.T.: 5.141 min  
 Delta R.T.: 0.002 min  
 Response: -43495  
 Conc: N.D.



#25 AR-1248-5

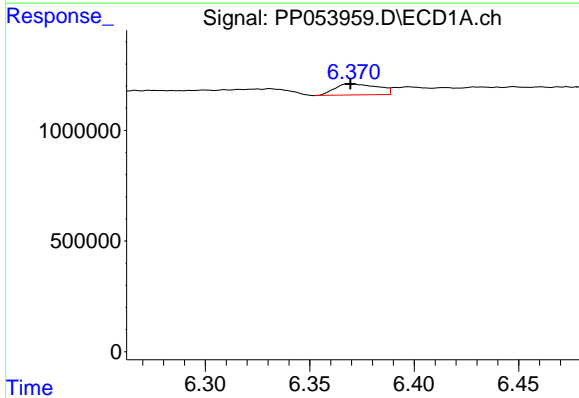
R.T.: 6.431 min  
 Delta R.T.: -0.005 min  
 Response: 343772  
 Conc: 4.88 ng/ml

Instrument :  
 ECD\_P  
 ClientSampleId :



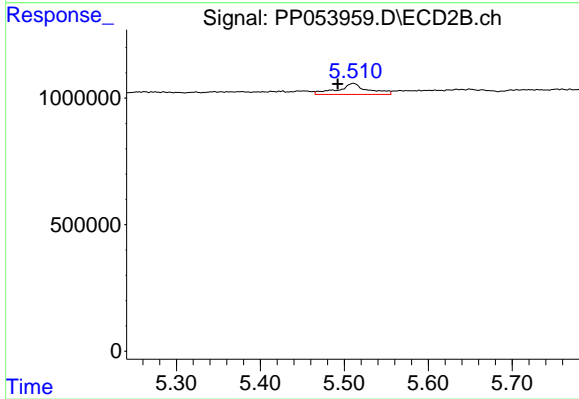
#25 AR-1248-5

R.T.: 5.511 min  
 Delta R.T.: -0.023 min  
 Response: 1095750  
 Conc: 29.18 ng/ml



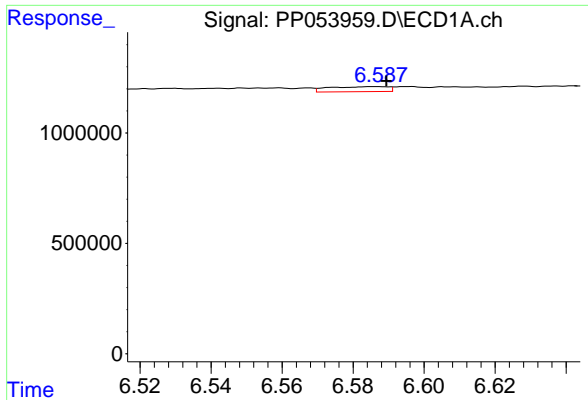
#26 AR-1254-1

R.T.: 6.370 min  
 Delta R.T.: 0.000 min  
 Response: 715384  
 Conc: 9.23 ng/ml



#26 AR-1254-1

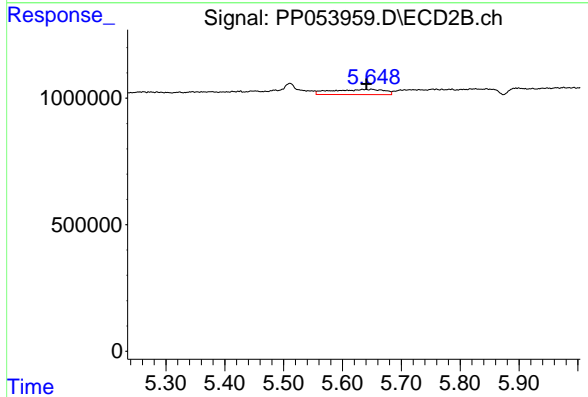
R.T.: 5.511 min  
 Delta R.T.: 0.018 min  
 Response: 1095750  
 Conc: 16.73 ng/ml



#27 AR-1254-2

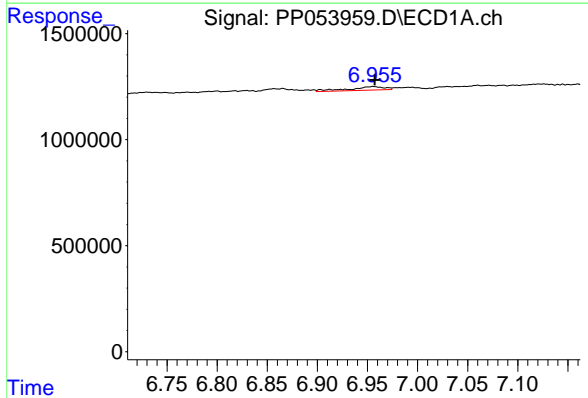
R.T.: 6.586 min  
 Delta R.T.: -0.003 min  
 Response: 268339  
 Conc: 2.31 ng/ml

Instrument :  
 ECD\_P  
 ClientSampleId :



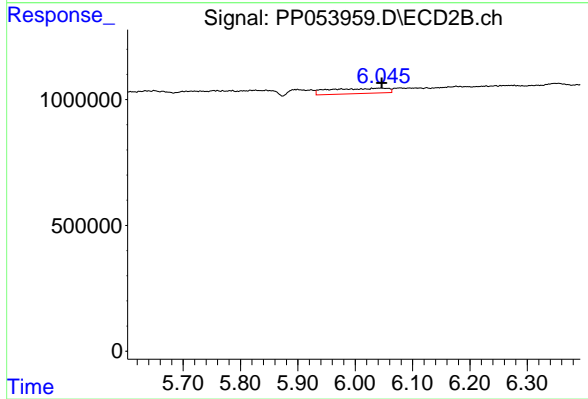
#27 AR-1254-2

R.T.: 5.650 min  
 Delta R.T.: 0.009 min  
 Response: 1268625  
 Conc: 21.75 ng/ml



#28 AR-1254-3

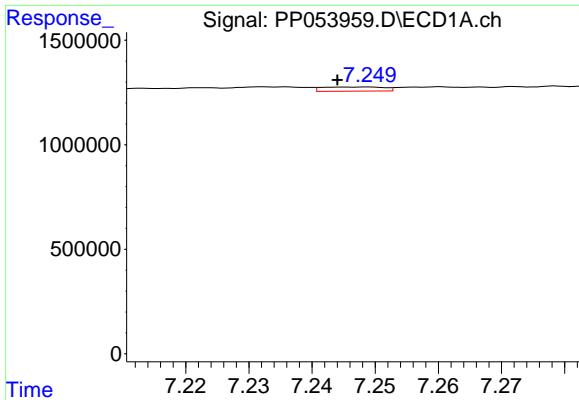
R.T.: 6.956 min  
 Delta R.T.: -0.001 min  
 Response: 421696  
 Conc: 3.60 ng/ml



#28 AR-1254-3

R.T.: 6.045 min  
 Delta R.T.: -0.002 min  
 Response: 1458981  
 Conc: 16.58 ng/ml

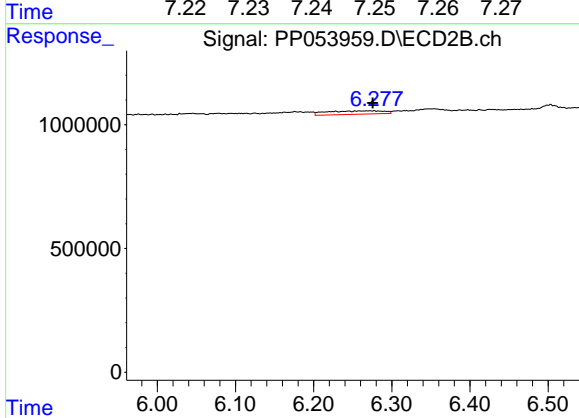




#29 AR-1254-4

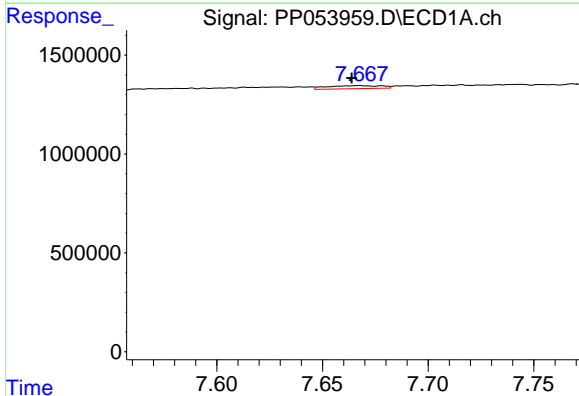
R.T.: 7.248 min  
 Delta R.T.: 0.004 min  
 Response: 134626  
 Conc: 1.70 ng/ml

Instrument :  
 ECD\_P  
 ClientSampleId :



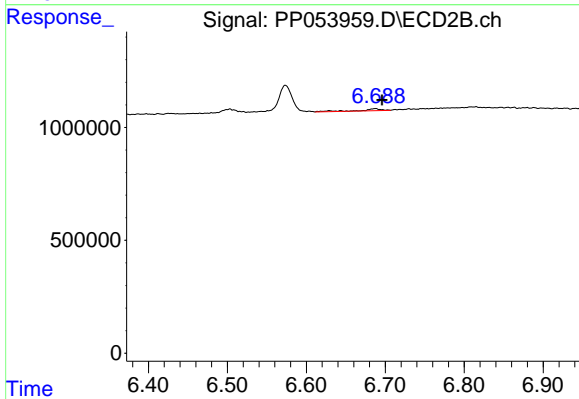
#29 AR-1254-4

R.T.: 6.273 min  
 Delta R.T.: -0.003 min  
 Response: 692341  
 Conc: 15.11 ng/ml



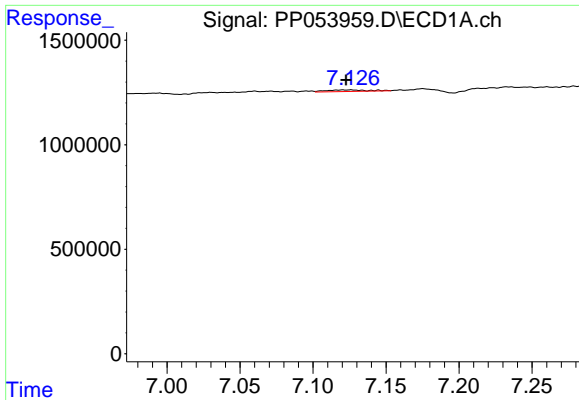
#30 AR-1254-5

R.T.: 7.667 min  
 Delta R.T.: 0.004 min  
 Response: 267428  
 Conc: 2.74 ng/ml



#30 AR-1254-5

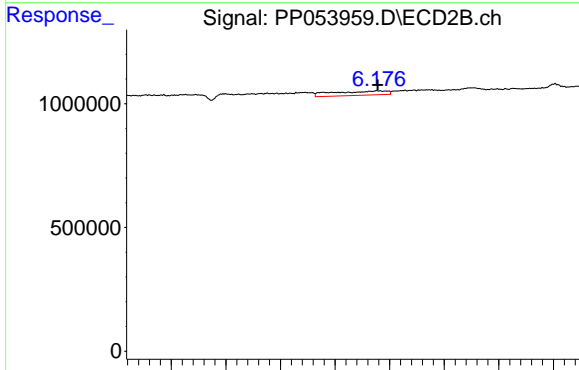
R.T.: 6.687 min  
 Delta R.T.: -0.009 min  
 Response: 141855  
 Conc: 1.82 ng/ml



#31 AR-1260-1

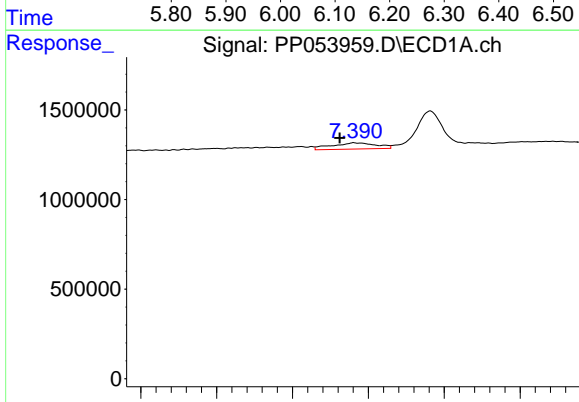
R.T.: 7.121 min  
 Delta R.T.: -0.002 min  
 Response: 141751  
 Conc: 1.47 ng/ml

Instrument :  
 ECD\_P  
 ClientSampleId :



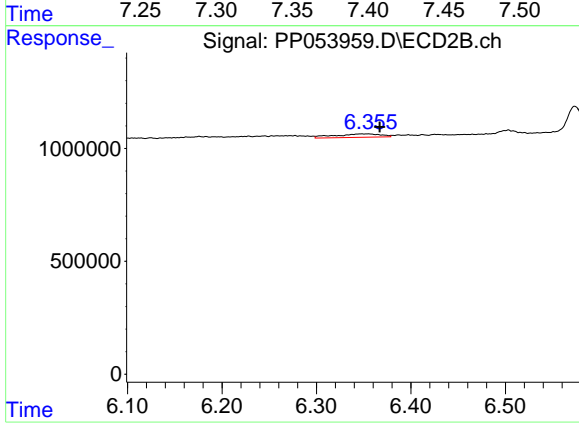
#31 AR-1260-1

R.T.: 6.177 min  
 Delta R.T.: -0.001 min  
 Response: 1168959  
 Conc: 17.92 ng/ml



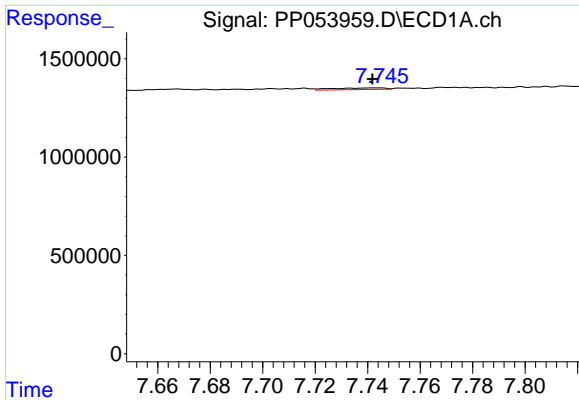
#32 AR-1260-2

R.T.: 7.391 min  
 Delta R.T.: 0.010 min  
 Response: 711548  
 Conc: 6.44 ng/ml



#32 AR-1260-2

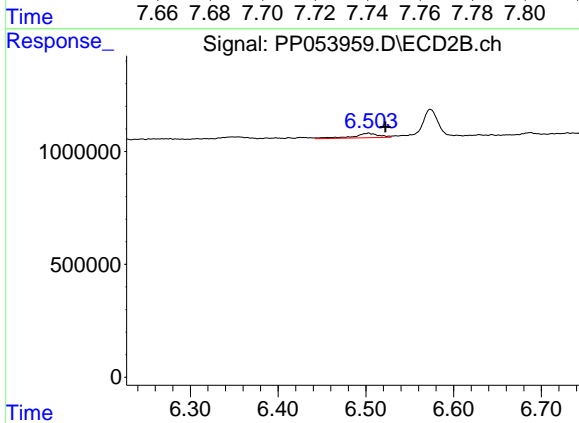
R.T.: 6.353 min  
 Delta R.T.: -0.014 min  
 Response: 518700  
 Conc: 6.89 ng/ml



#33 AR-1260-3

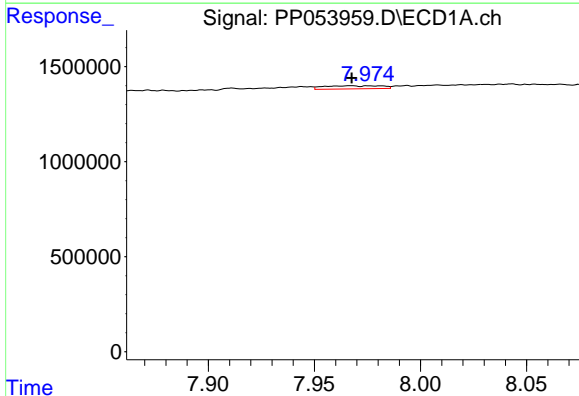
R.T.: 7.743 min  
 Delta R.T.: 0.002 min  
 Response: 119059  
 Conc: 1.57 ng/ml

Instrument :  
 ECD\_P  
 ClientSampleId :



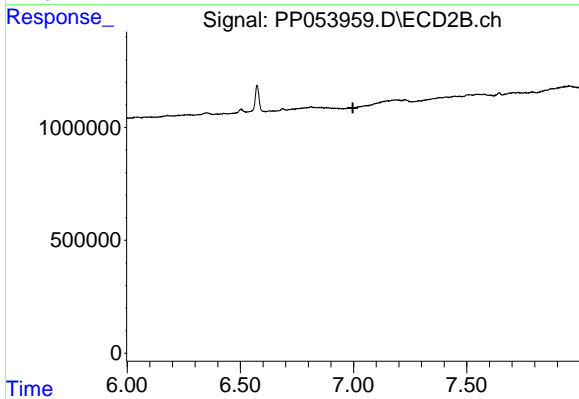
#33 AR-1260-3

R.T.: 6.503 min  
 Delta R.T.: -0.019 min  
 Response: 411203  
 Conc: 5.67 ng/ml



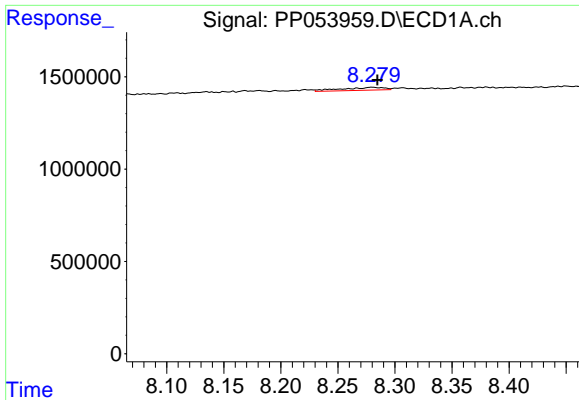
#34 AR-1260-4

R.T.: 7.967 min  
 Delta R.T.: 0.000 min  
 Response: 301244  
 Conc: 3.21 ng/ml



#34 AR-1260-4

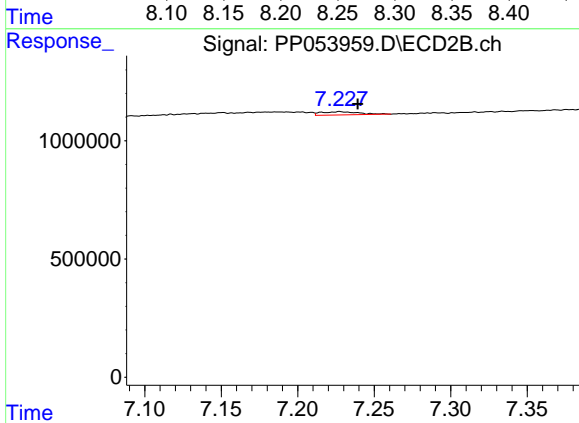
R.T.: 0.000 min  
 Exp R.T. : 6.997 min  
 Response: 0  
 Conc: N.D.



#35 AR-1260-5

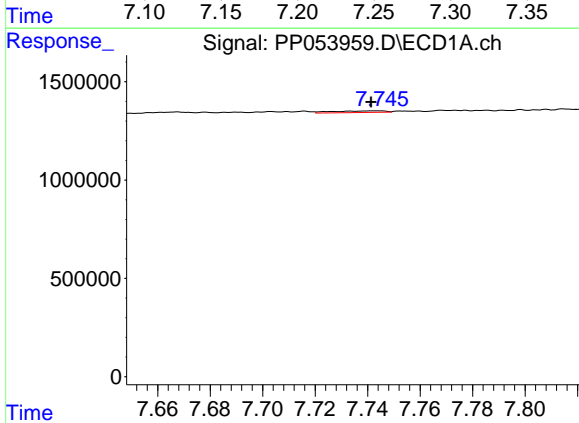
R.T.: 8.280 min  
 Delta R.T.: -0.005 min  
 Response: 410623  
 Conc: 2.59 ng/ml

Instrument :  
 ECD\_P  
 ClientSampleId :



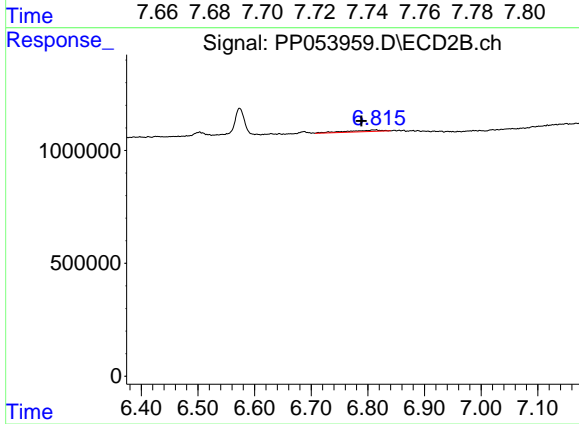
#35 AR-1260-5

R.T.: 7.228 min  
 Delta R.T.: -0.012 min  
 Response: 235373  
 Conc: 1.97 ng/ml



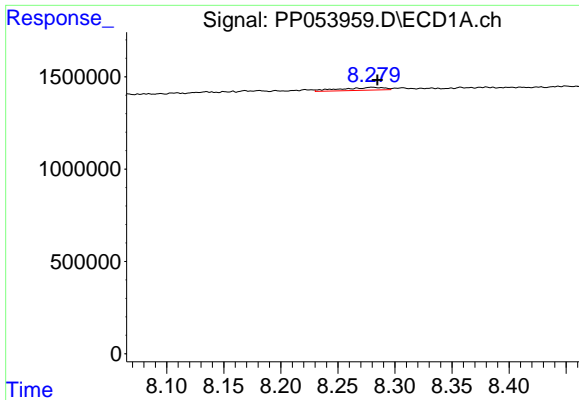
#36 AR-1262-1

R.T.: 7.743 min  
 Delta R.T.: 0.002 min  
 Response: 119059  
 Conc: 0.99 ng/ml



#36 AR-1262-1

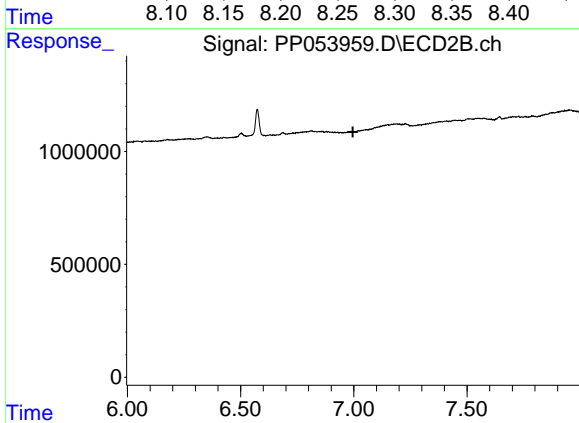
R.T.: 6.812 min  
 Delta R.T.: 0.023 min  
 Response: 312880  
 Conc: 8.77 ng/ml



#37 AR-1262-2

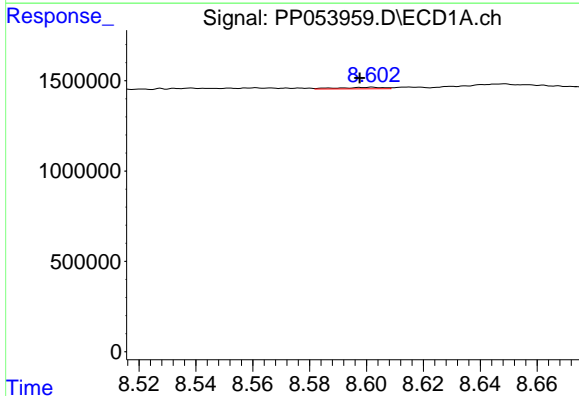
R.T.: 8.280 min  
 Delta R.T.: -0.005 min  
 Response: 410623  
 Conc: 2.14 ng/ml

Instrument :  
 ECD\_P  
 ClientSampleId :



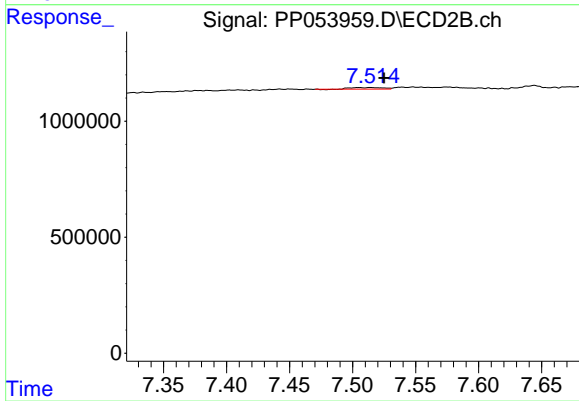
#37 AR-1262-2

R.T.: 0.000 min  
 Exp R.T. : 6.996 min  
 Response: 0  
 Conc: N.D.



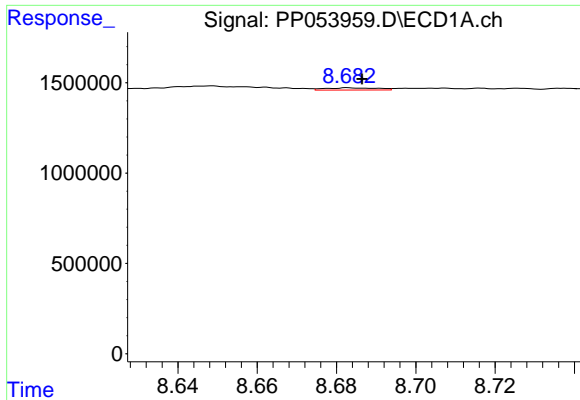
#38 AR-1262-3

R.T.: 8.602 min  
 Delta R.T.: 0.004 min  
 Response: 96930  
 Conc: 0.70 ng/ml



#38 AR-1262-3

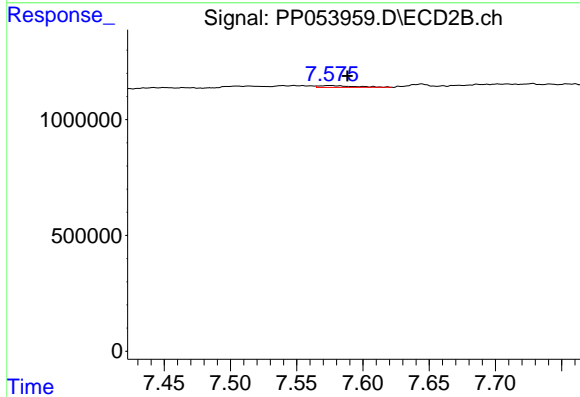
R.T.: 7.514 min  
 Delta R.T.: -0.011 min  
 Response: 121997  
 Conc: 1.94 ng/ml



#39 AR-1262-4

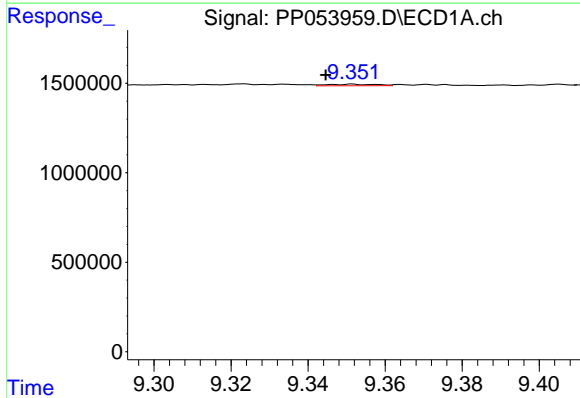
R.T.: 8.683 min  
 Delta R.T.: -0.003 min  
 Response: 115508  
 Conc: 1.86 ng/ml

Instrument :  
 ECD\_P  
 ClientSampleId :



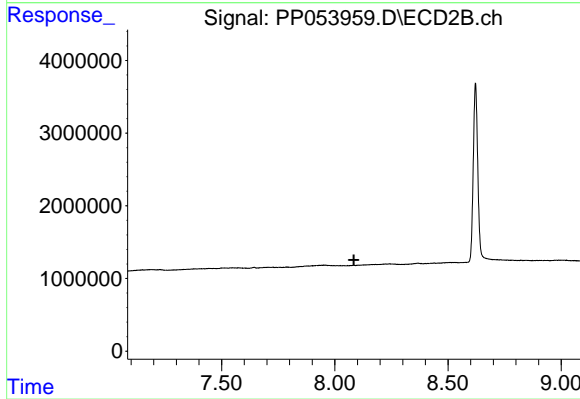
#39 AR-1262-4

R.T.: 7.575 min  
 Delta R.T.: -0.013 min  
 Response: 151233  
 Conc: 1.32 ng/ml



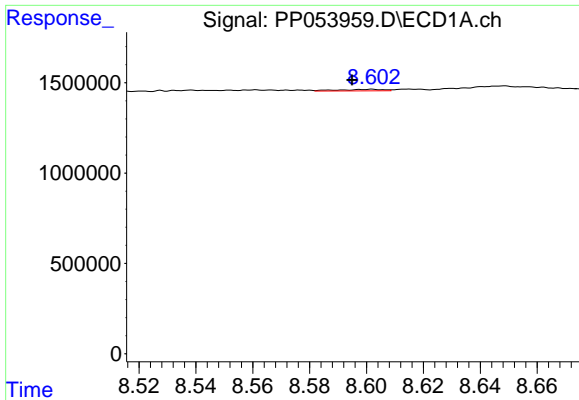
#40 AR-1262-5

R.T.: 9.352 min  
 Delta R.T.: 0.007 min  
 Response: 78652  
 Conc: 1.11 ng/ml



#40 AR-1262-5

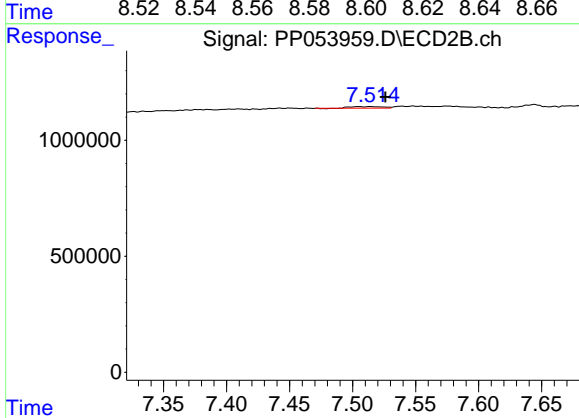
R.T.: 0.000 min  
 Exp R.T. : 8.084 min  
 Response: 0  
 Conc: N.D.



#41 AR-1268-1

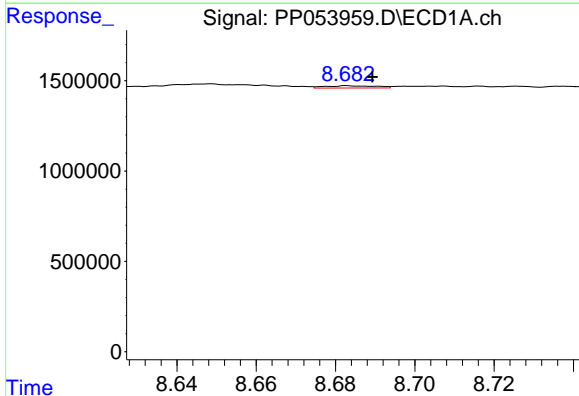
R.T.: 8.602 min  
 Delta R.T.: 0.007 min  
 Response: 96930  
 Conc: 0.40 ng/ml

Instrument :  
 ECD\_P  
 ClientSampleId :



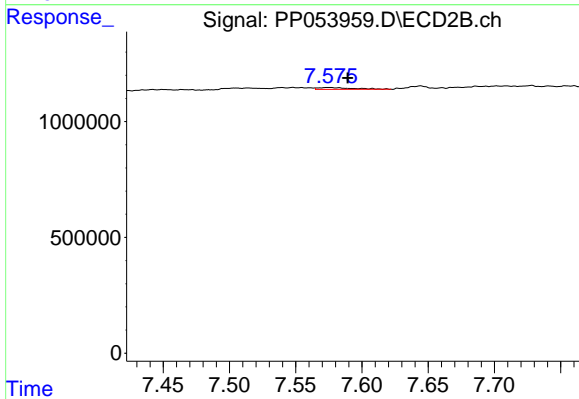
#41 AR-1268-1

R.T.: 7.514 min  
 Delta R.T.: -0.012 min  
 Response: 121997  
 Conc: 0.67 ng/ml



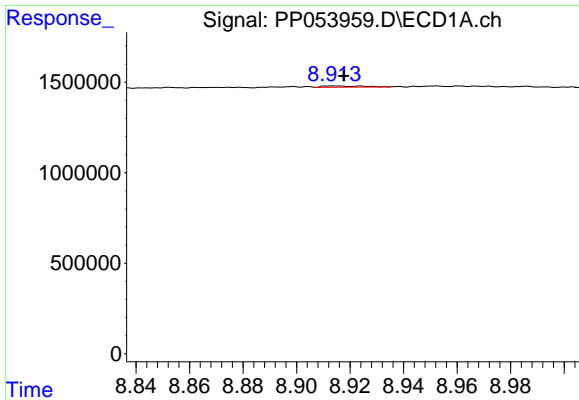
#42 AR-1268-2

R.T.: 8.683 min  
 Delta R.T.: -0.006 min  
 Response: 115508  
 Conc: 0.51 ng/ml



#42 AR-1268-2

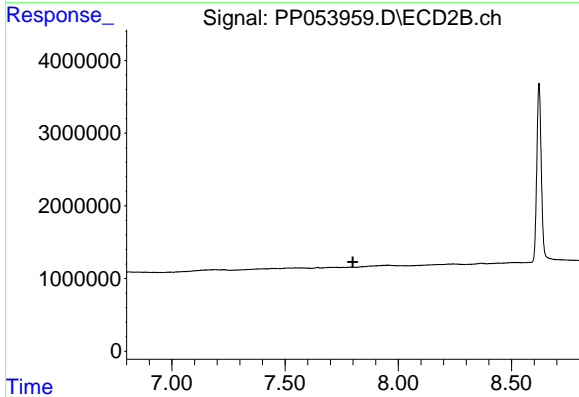
R.T.: 7.575 min  
 Delta R.T.: -0.014 min  
 Response: 151233  
 Conc: 0.89 ng/ml



#43 AR-1268-3

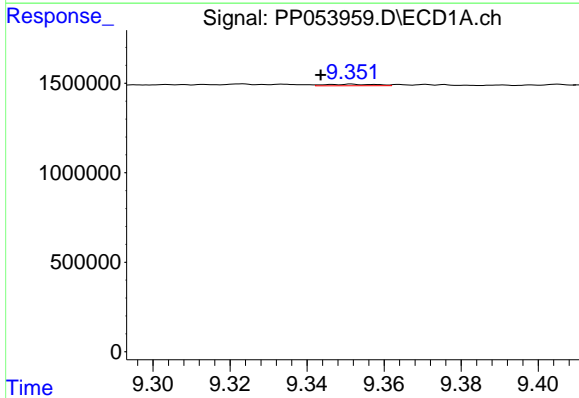
R.T.: 8.914 min  
 Delta R.T.: -0.004 min  
 Response: 75901  
 Conc: 0.40 ng/ml

Instrument :  
 ECD\_P  
 ClientSampleId :



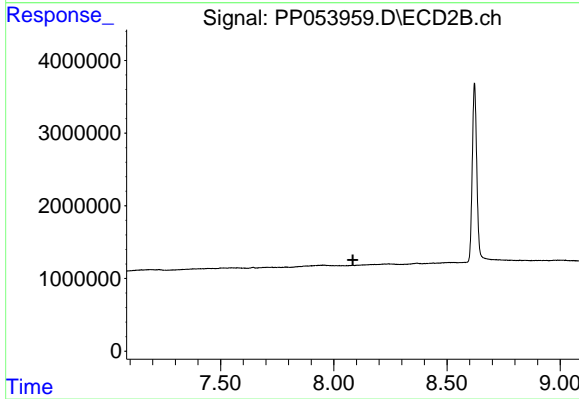
#43 AR-1268-3

R.T.: 0.000 min  
 Exp R.T. : 7.799 min  
 Response: 0  
 Conc: N.D.



#44 AR-1268-4

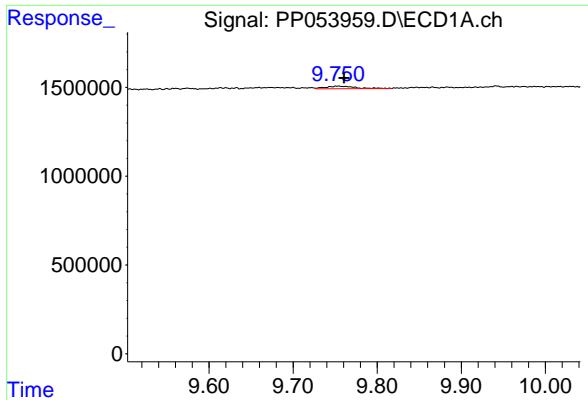
R.T.: 9.352 min  
 Delta R.T.: 0.008 min  
 Response: 78652  
 Conc: 1.02 ng/ml



#44 AR-1268-4

R.T.: 0.000 min  
 Exp R.T. : 8.085 min  
 Response: 0  
 Conc: N.D.

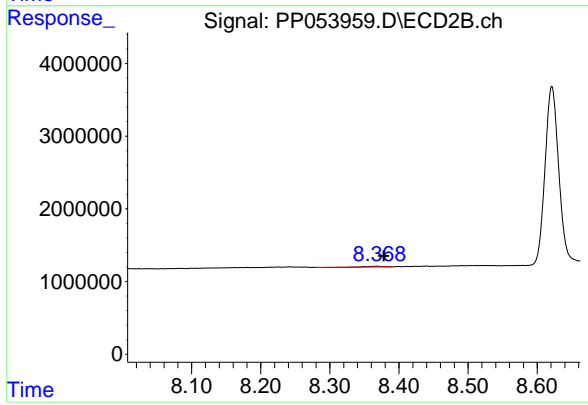




#45 AR-1268-5

R.T.: 9.754 min  
Delta R.T.: -0.007 min  
Response: 368679  
Conc: 0.63 ng/ml

Instrument :  
ECD\_P  
ClientSampleId :



#45 AR-1268-5

R.T.: 8.367 min  
Delta R.T.: -0.011 min  
Response: 136368  
Conc: 0.29 ng/ml