

Data Path : Z:\pestpcbsrv\HPCHEM1\ECD\_P\Data\PP122222\  
 Data File : PP053960.D  
 Signal(s) : Signal #1: ECD1A.ch Signal #2: ECD2B.ch  
 Acq On : 22 Dec 2022 17:17  
 Operator : YP\AJ  
 Sample : N6178-01  
 Misc :  
 ALS Vial : 16 Sample Multiplier: 1

Instrument :  
 ECD\_P  
 ClientSampleId :

Integration File signal 1: autoint1.e  
 Integration File signal 2: autoint2.e  
 Quant Time: Dec 22 20:37:42 2022  
 Quant Method : Z:\pestpcbsrv\HPCHEM1\ECD\_P\methods\PP121322.M  
 Quant Title : GC EXTRACTABLES  
 QLast Update : Wed Dec 14 05:38:40 2022  
 Response via : Initial Calibration  
 Integrator: ChemStation

Volume Inj. : 2 µl  
 Signal #1 Phase : ZB-MR2 Signal #2 Phase: ZB-MR2  
 Signal #1 Info : 30Mx0.32mmx 0.50µ Signal #2 Info : 30M x 0.32mm x 0.25µm

Compound	RT#1	RT#2	Resp#1	Resp#2	ng/ml	ng/ml
-----						
System Monitoring Compounds						
1) SA Tetrachlo...	4.338	3.589	53581952	34879600	25.518	22.334
2) SA Decachlor...	10.099	8.622	33960649	28980371	20.003	20.748
Target Compounds						
8) L2 AR-1221-1	4.545	3.813	1059293	7668089	41.118	396.032 #
9) L2 AR-1221-2	4.642	3.882	-8180373	16049327	N.D.	1097.962 #
10) L2 AR-1221-3	0.000	3.952f	0	25893964	N.D.	582.136 #
11) L3 AR-1232-1	0.000	3.952f	0	25893964	N.D.	752.482 #
26) L6 AR-1254-1	6.369	0.000	103561	0	1.336	N.D. #
27) L6 AR-1254-2	6.585	0.000	101965	0	0.876	N.D. #
28) L6 AR-1254-3	6.958	0.000	106267	0	0.907	N.D. #
29) L6 AR-1254-4	7.242	0.000	654958	0	8.262	N.D. #
30) L6 AR-1254-5	7.685f	6.686	677606	304341	6.948	3.905 #
31) L7 AR-1260-1	7.126	0.000	19077	0	0.198	N.D. #
32) L7 AR-1260-2	7.378	0.000	753192	0	6.818	N.D. #
33) L7 AR-1260-3	7.743	0.000	34248	0	0.453	N.D. #
34) L7 AR-1260-4	7.975	6.988	104327	80740	1.112	1.488 #
35) L7 AR-1260-5	8.283	7.229	279549	145367	1.763	1.216 #
36) L8 AR-1262-1	7.743	6.810f	34248	104349	0.286	2.926 #
37) L8 AR-1262-2	8.283	6.988	279549	80740	1.458	1.039 #
38) L8 AR-1262-3	8.600	7.503f	15078	86824	0.109	1.378 #
39) L8 AR-1262-4	8.688	0.000	536654	0	8.623	N.D. #
40) L8 AR-1262-5	9.321f	8.085	230916	54814	3.268	1.100 #
41) L9 AR-1268-1	8.600	7.503f	15078	86824	0.062	0.480 #
42) L9 AR-1268-2	8.688	0.000	536654	0	2.361	N.D. #
43) L9 AR-1268-3	8.921	0.000	96661	0	0.504	N.D. #
44) L9 AR-1268-4	9.321f	8.085	230916	54814	3.000	0.984 #
45) L9 AR-1268-5	9.759	8.393	184240	54689	0.313	0.116 #

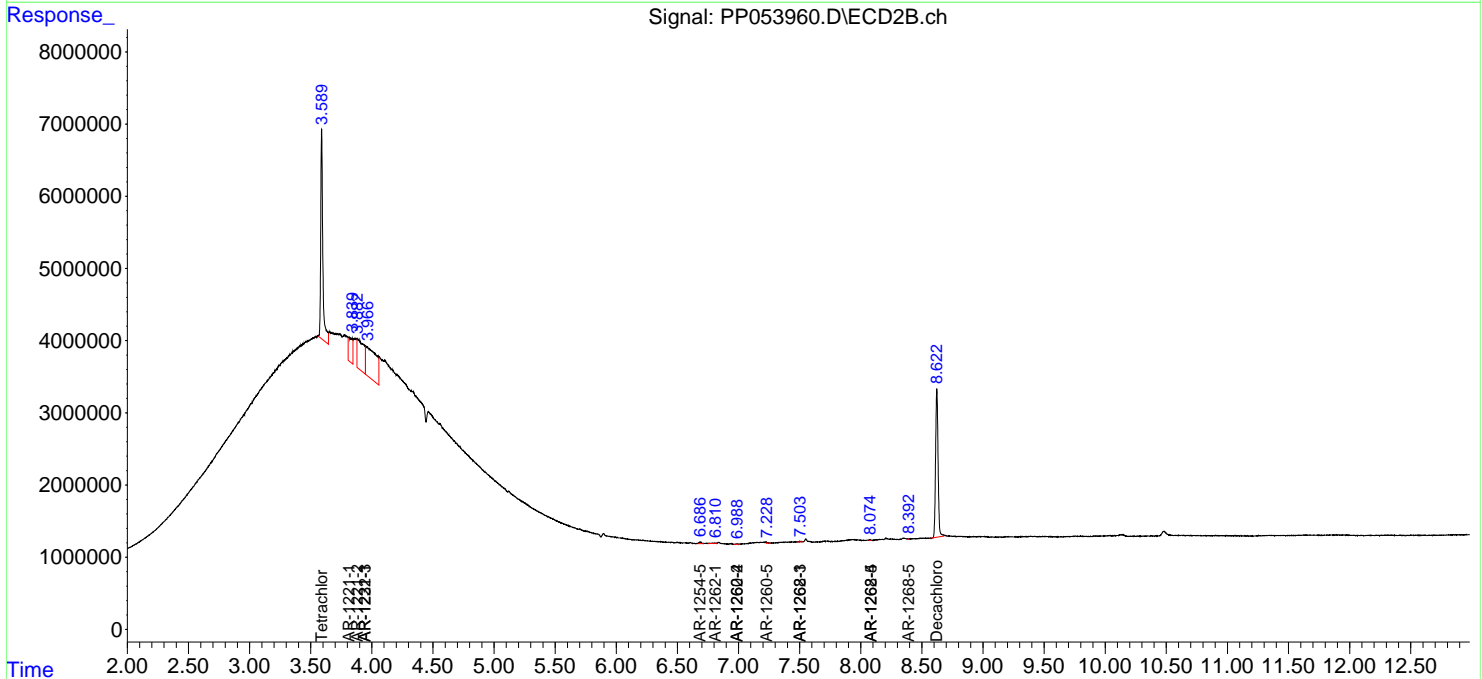
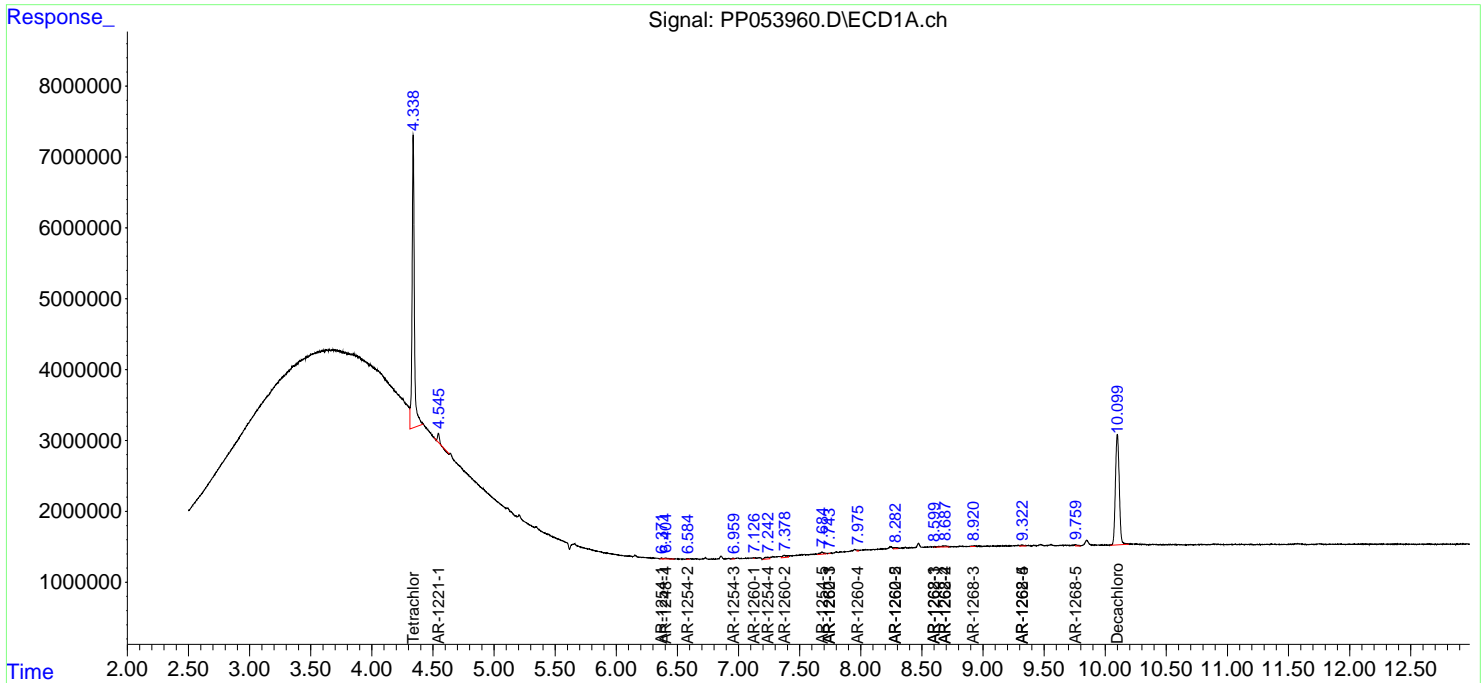
(f)=RT Delta > 1/2 Window (#)=Amounts differ by > 25% (m)=manual int.

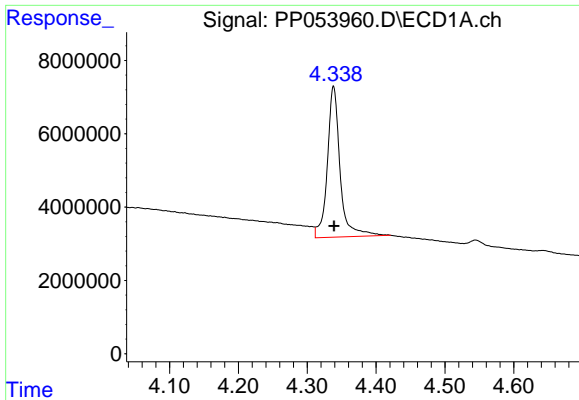
Data Path : Z:\pestpcbsrv\HPCHEM1\ECD\_P\Data\PP122222\  
 Data File : PP053960.D  
 Signal(s) : Signal #1: ECD1A.ch Signal #2: ECD2B.ch  
 Acq On : 22 Dec 2022 17:17  
 Operator : YP\AJ  
 Sample : N6178-01  
 Misc :  
 ALS Vial : 16 Sample Multiplier: 1

Instrument :  
 ECD\_P  
 ClientSampleId :

Integration File signal 1: autoint1.e  
 Integration File signal 2: autoint2.e  
 Quant Time: Dec 22 20:37:42 2022  
 Quant Method : Z:\pestpcbsrv\HPCHEM1\ECD\_P\methods\PP121322.M  
 Quant Title : GC EXTRACTABLES  
 QLast Update : Wed Dec 14 05:38:40 2022  
 Response via : Initial Calibration  
 Integrator: ChemStation

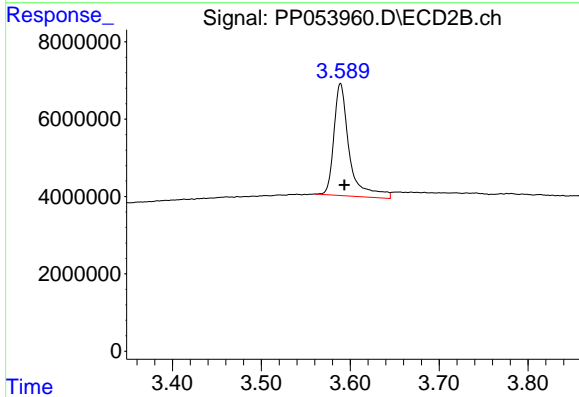
Volume Inj. : 2 µl  
 Signal #1 Phase : ZB-MR1 Signal #2 Phase: ZB-MR2  
 Signal #1 Info : 30Mx0.32mmx 0.50µ Signal #2 Info : 30M x 0.32mm x 0.25µm



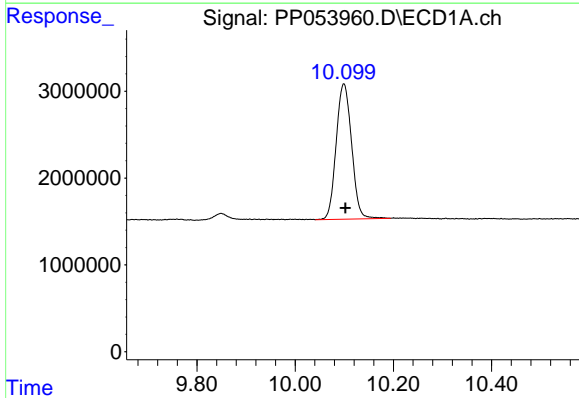


#1 Tetrachloro-m-xylene  
 R.T.: 4.338 min  
 Delta R.T.: 0.000 min  
 Response: 53581952  
 Conc: 25.52 ng/ml

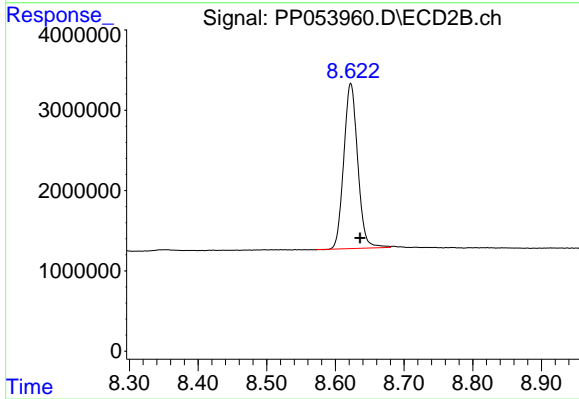
Instrument :  
 ECD\_P  
 ClientSampleId :



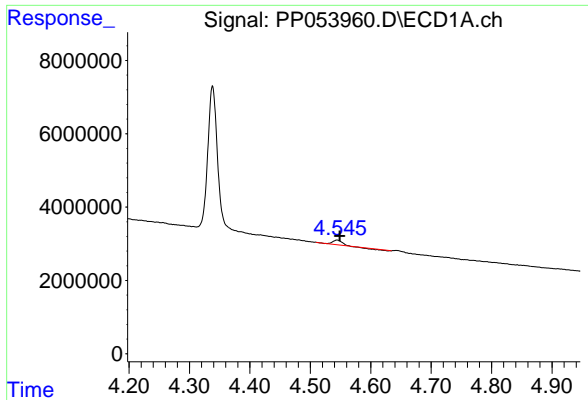
#1 Tetrachloro-m-xylene  
 R.T.: 3.589 min  
 Delta R.T.: -0.005 min  
 Response: 34879600  
 Conc: 22.33 ng/ml



#2 Decachlorobiphenyl  
 R.T.: 10.099 min  
 Delta R.T.: -0.003 min  
 Response: 33960649  
 Conc: 20.00 ng/ml



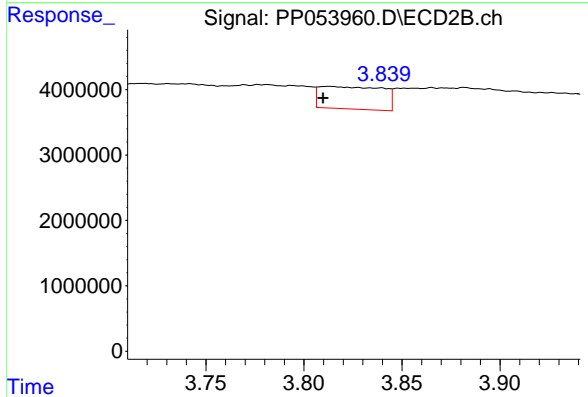
#2 Decachlorobiphenyl  
 R.T.: 8.622 min  
 Delta R.T.: -0.013 min  
 Response: 28980371  
 Conc: 20.75 ng/ml



#8 AR-1221-1

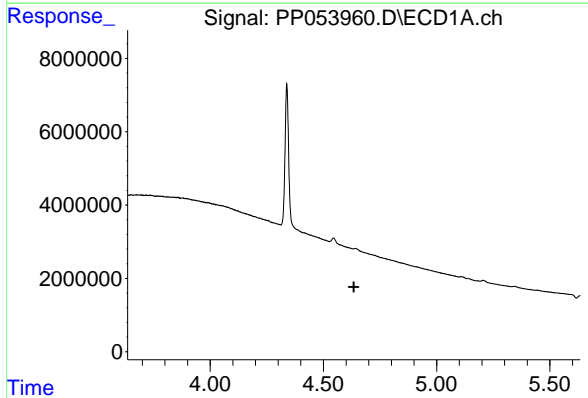
R.T.: 4.545 min  
 Delta R.T.: -0.004 min  
 Response: 1059293  
 Conc: 41.12 ng/ml

Instrument :  
 ECD\_P  
 ClientSampleId :



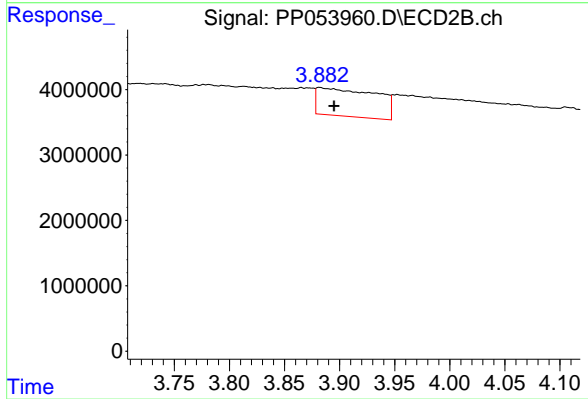
#8 AR-1221-1

R.T.: 3.813 min  
 Delta R.T.: 0.003 min  
 Response: 7668089  
 Conc: 396.03 ng/ml



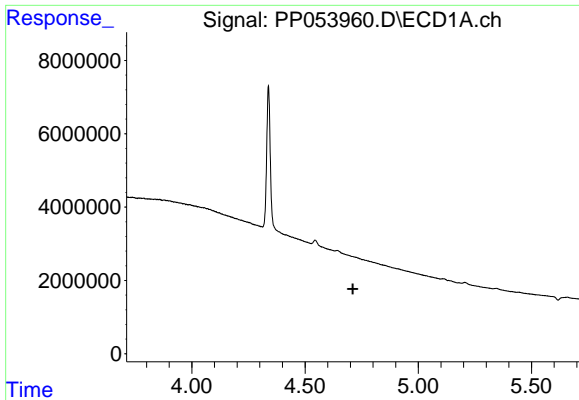
#9 AR-1221-2

R.T.: 4.642 min  
 Delta R.T.: 0.007 min  
 Response: -8180373  
 Conc: N.D.



#9 AR-1221-2

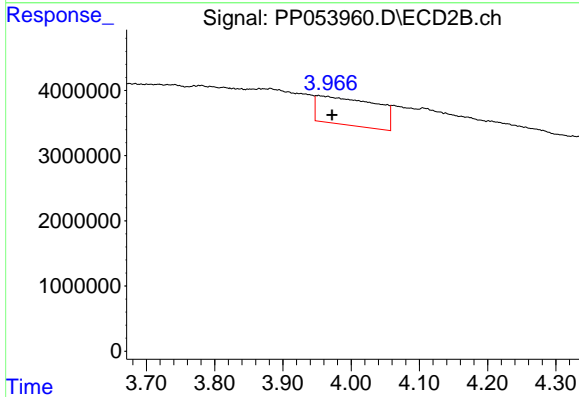
R.T.: 3.882 min  
 Delta R.T.: -0.013 min  
 Response: 16049327  
 Conc: 1097.96 ng/ml



#10 AR-1221-3

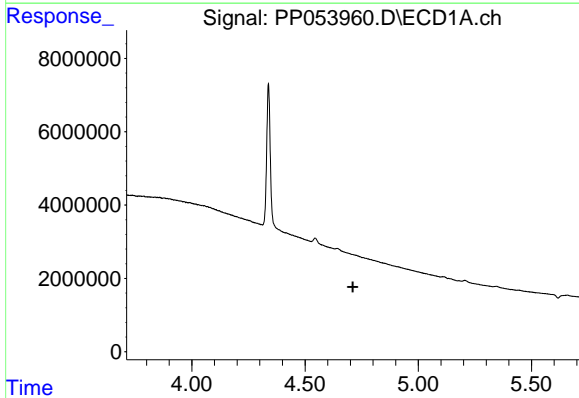
R.T.: 0.000 min  
 Exp R.T. : 4.711 min  
 Response: 0  
 Conc: N.D.

Instrument :  
 ECD\_P  
 ClientSampleId :



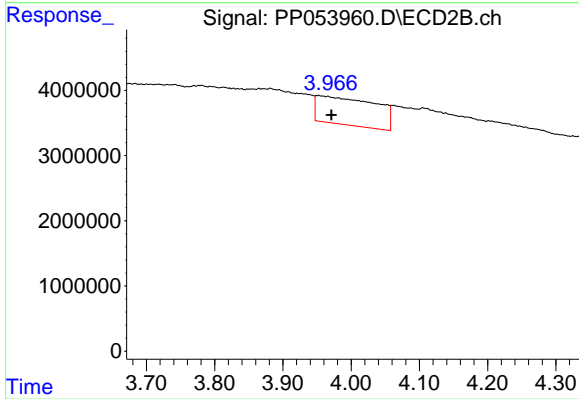
#10 AR-1221-3

R.T.: 3.952 min  
 Delta R.T.: -0.020 min  
 Response: 25893964  
 Conc: 582.14 ng/ml



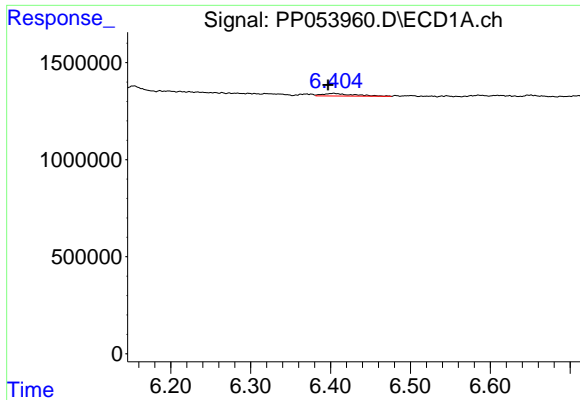
#11 AR-1232-1

R.T.: 0.000 min  
 Exp R.T. : 4.711 min  
 Response: 0  
 Conc: N.D.



#11 AR-1232-1

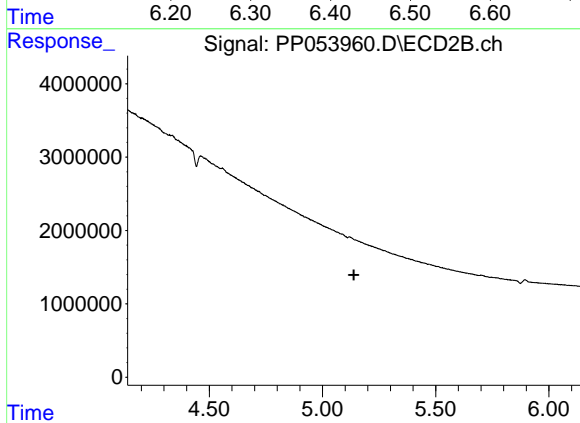
R.T.: 3.952 min  
 Delta R.T.: -0.019 min  
 Response: 25893964  
 Conc: 752.48 ng/ml



#24 AR-1248-4

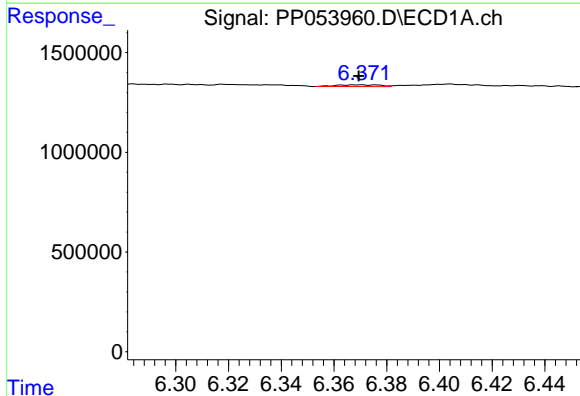
R.T.: 6.404 min  
 Delta R.T.: 0.007 min  
 Response: 354939  
 Conc: 5.03 ng/ml

Instrument :  
 ECD\_P  
 ClientSampleId :



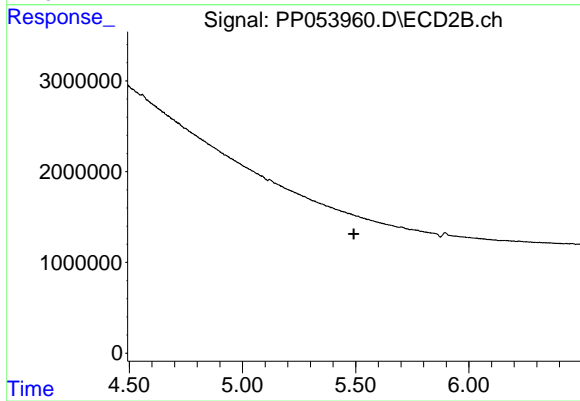
#24 AR-1248-4

R.T.: 5.119 min  
 Delta R.T.: -0.020 min  
 Response: -1629150  
 Conc: N.D.



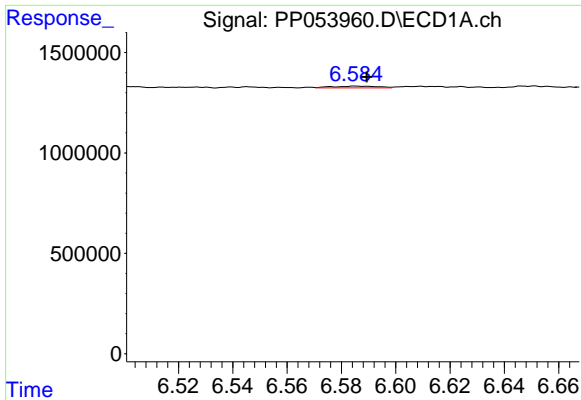
#26 AR-1254-1

R.T.: 6.369 min  
 Delta R.T.: 0.000 min  
 Response: 103561  
 Conc: 1.34 ng/ml



#26 AR-1254-1

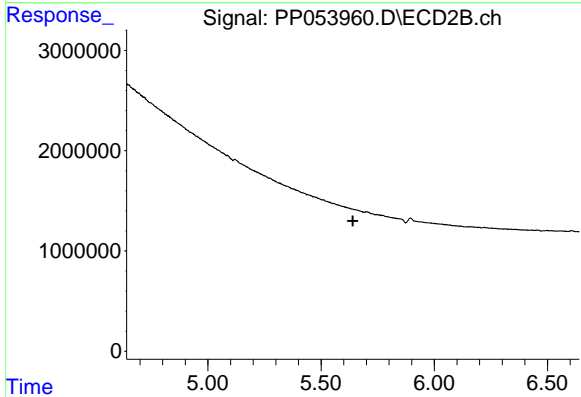
R.T.: 0.000 min  
 Exp R.T. : 5.492 min  
 Response: 0  
 Conc: N.D.



#27 AR-1254-2

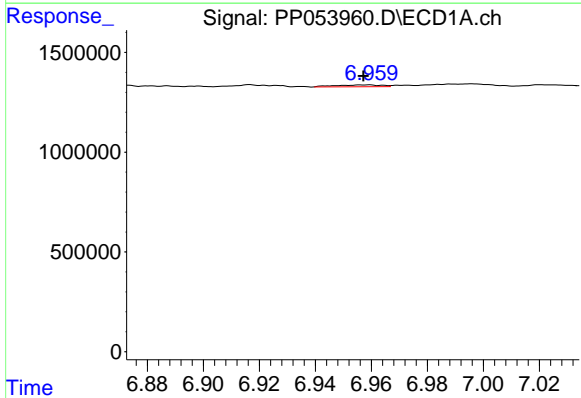
R.T.: 6.585 min  
 Delta R.T.: -0.004 min  
 Response: 101965  
 Conc: 0.88 ng/ml

Instrument :  
 ECD\_P  
 ClientSampleId :



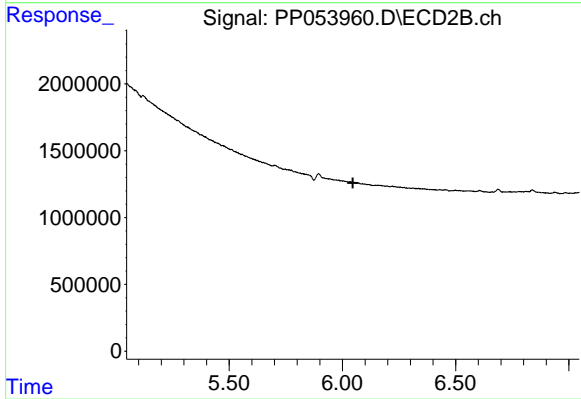
#27 AR-1254-2

R.T.: 0.000 min  
 Exp R.T. : 5.640 min  
 Response: 0  
 Conc: N.D.



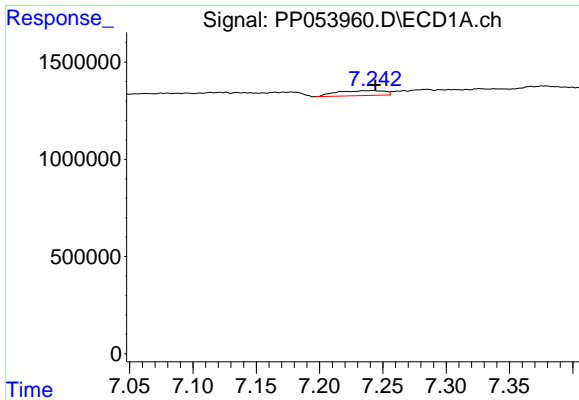
#28 AR-1254-3

R.T.: 6.958 min  
 Delta R.T.: 0.000 min  
 Response: 106267  
 Conc: 0.91 ng/ml



#28 AR-1254-3

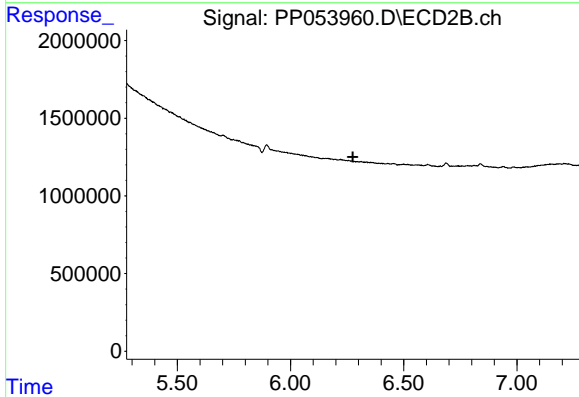
R.T.: 0.000 min  
 Exp R.T. : 6.047 min  
 Response: 0  
 Conc: N.D.



#29 AR-1254-4

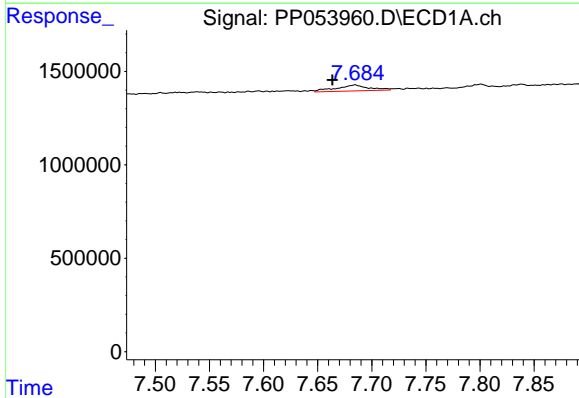
R.T.: 7.242 min  
 Delta R.T.: -0.002 min  
 Response: 654958  
 Conc: 8.26 ng/ml

Instrument :  
 ECD\_P  
 ClientSampleId :



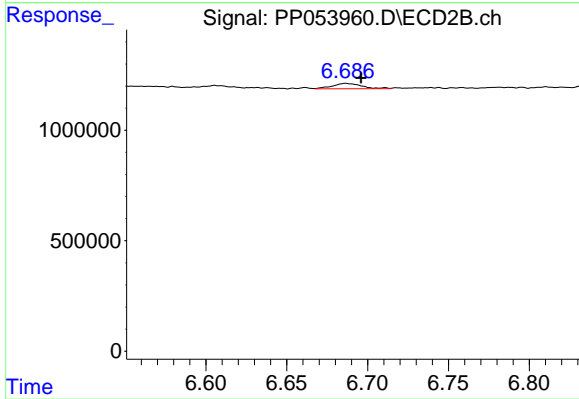
#29 AR-1254-4

R.T.: 0.000 min  
 Exp R.T. : 6.276 min  
 Response: 0  
 Conc: N.D.



#30 AR-1254-5

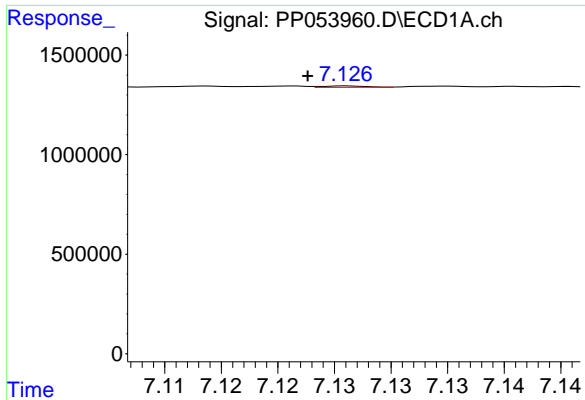
R.T.: 7.685 min  
 Delta R.T.: 0.021 min  
 Response: 677606  
 Conc: 6.95 ng/ml



#30 AR-1254-5

R.T.: 6.686 min  
 Delta R.T.: -0.010 min  
 Response: 304341  
 Conc: 3.91 ng/ml

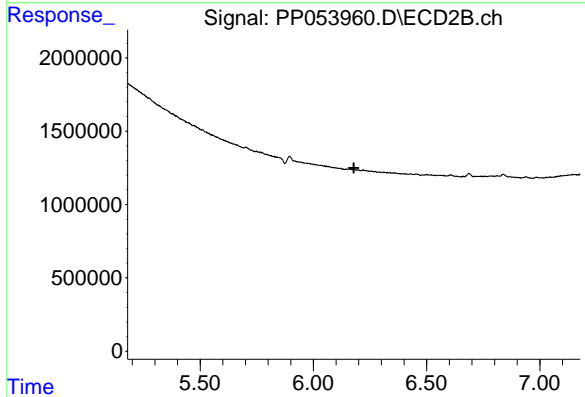




#31 AR-1260-1

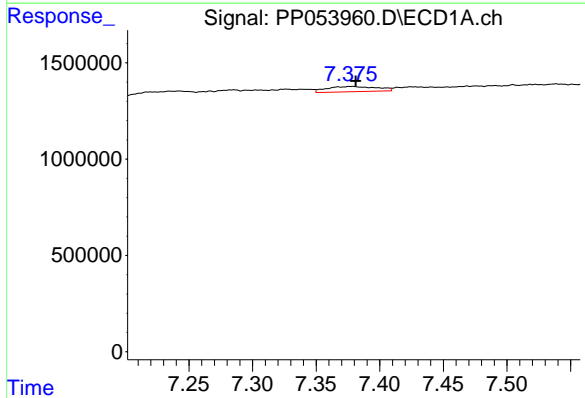
R.T.: 7.126 min  
 Delta R.T.: 0.003 min  
 Response: 19077  
 Conc: 0.20 ng/ml

Instrument :  
 ECD\_P  
 ClientSampleId :



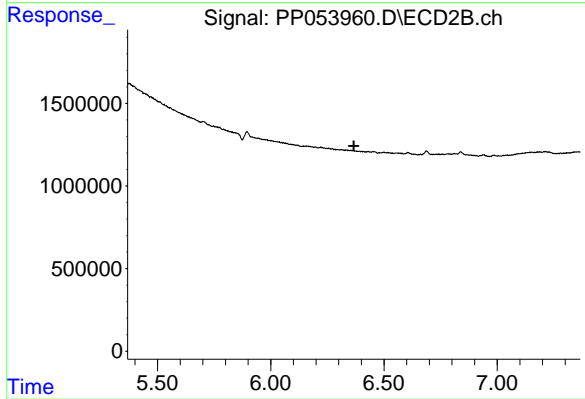
#31 AR-1260-1

R.T.: 0.000 min  
 Exp R.T. : 6.179 min  
 Response: 0  
 Conc: N.D.



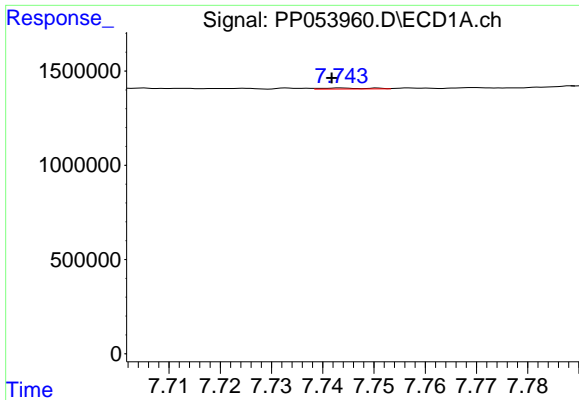
#32 AR-1260-2

R.T.: 7.378 min  
 Delta R.T.: -0.003 min  
 Response: 753192  
 Conc: 6.82 ng/ml



#32 AR-1260-2

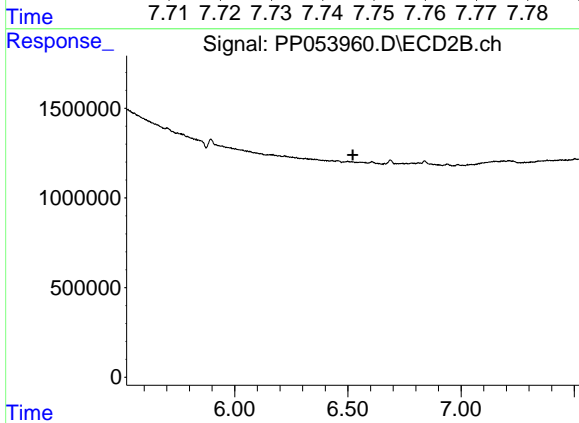
R.T.: 0.000 min  
 Exp R.T. : 6.367 min  
 Response: 0  
 Conc: N.D.



#33 AR-1260-3

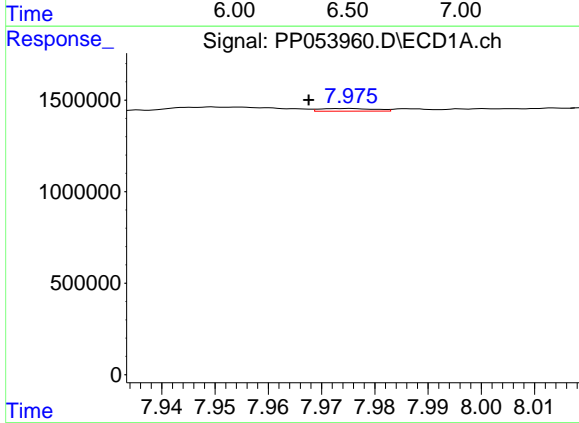
R.T.: 7.743 min  
 Delta R.T.: 0.002 min  
 Response: 34248  
 Conc: 0.45 ng/ml

Instrument :  
 ECD\_P  
 ClientSampleId :



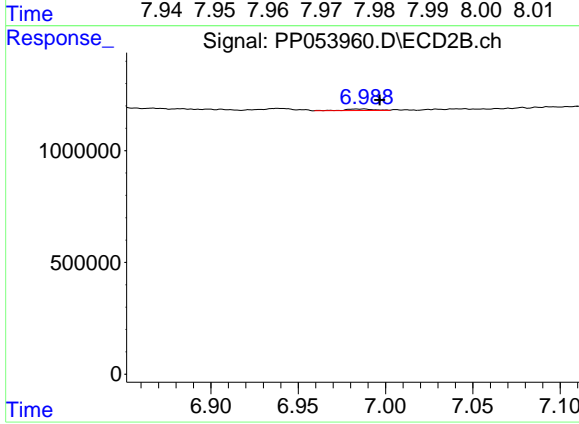
#33 AR-1260-3

R.T.: 0.000 min  
 Exp R.T. : 6.522 min  
 Response: 0  
 Conc: N.D.



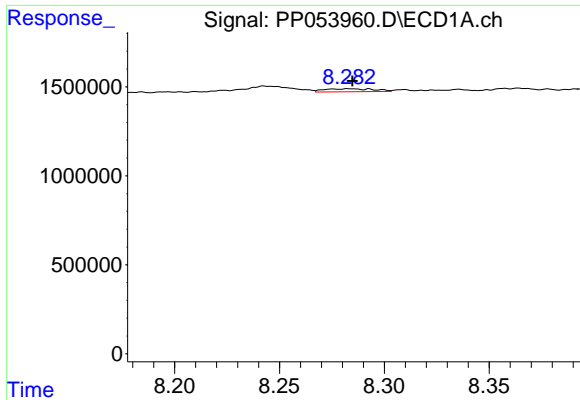
#34 AR-1260-4

R.T.: 7.975 min  
 Delta R.T.: 0.007 min  
 Response: 104327  
 Conc: 1.11 ng/ml



#34 AR-1260-4

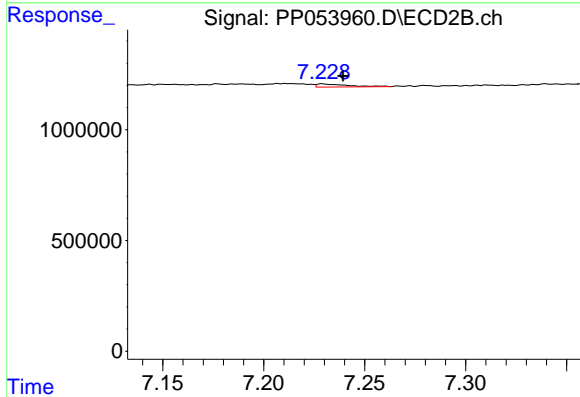
R.T.: 6.988 min  
 Delta R.T.: -0.009 min  
 Response: 80740  
 Conc: 1.49 ng/ml



#35 AR-1260-5

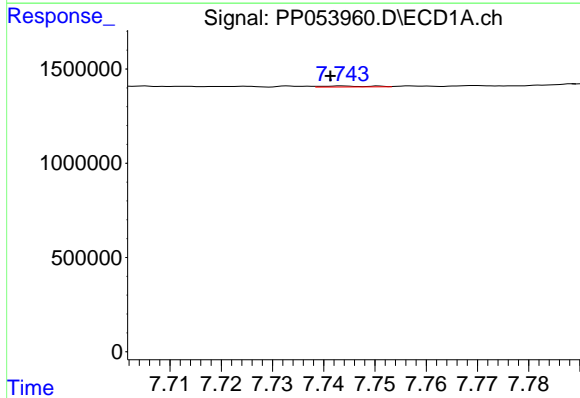
R.T.: 8.283 min  
 Delta R.T.: -0.001 min  
 Response: 279549  
 Conc: 1.76 ng/ml

Instrument :  
 ECD\_P  
 ClientSampleId :



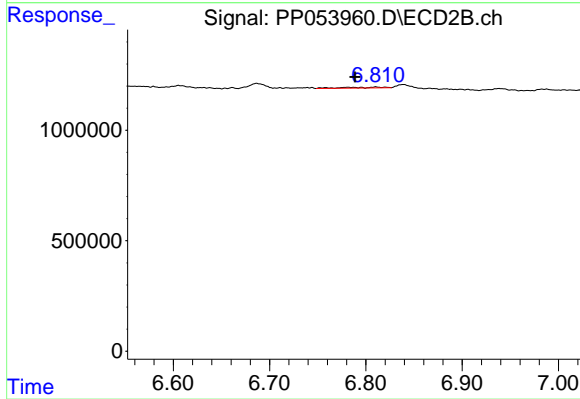
#35 AR-1260-5

R.T.: 7.229 min  
 Delta R.T.: -0.010 min  
 Response: 145367  
 Conc: 1.22 ng/ml



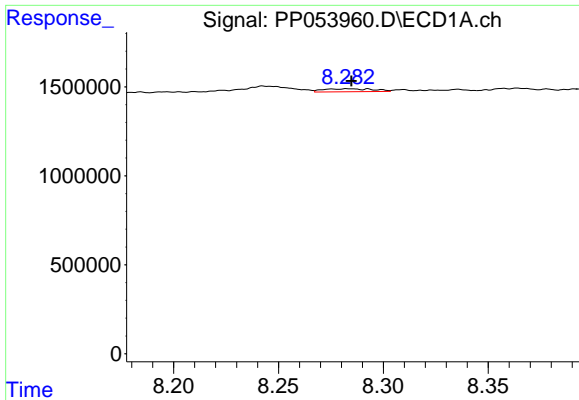
#36 AR-1262-1

R.T.: 7.743 min  
 Delta R.T.: 0.002 min  
 Response: 34248  
 Conc: 0.29 ng/ml



#36 AR-1262-1

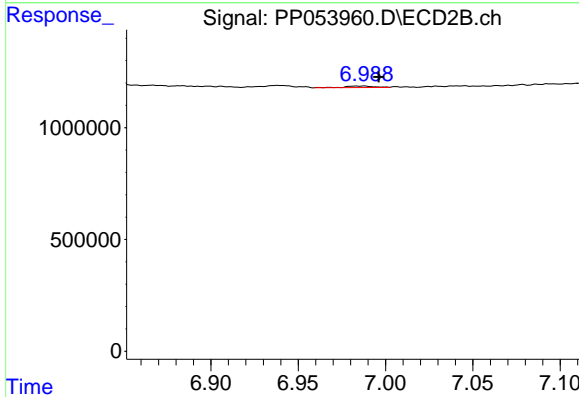
R.T.: 6.810 min  
 Delta R.T.: 0.022 min  
 Response: 104349  
 Conc: 2.93 ng/ml



#37 AR-1262-2

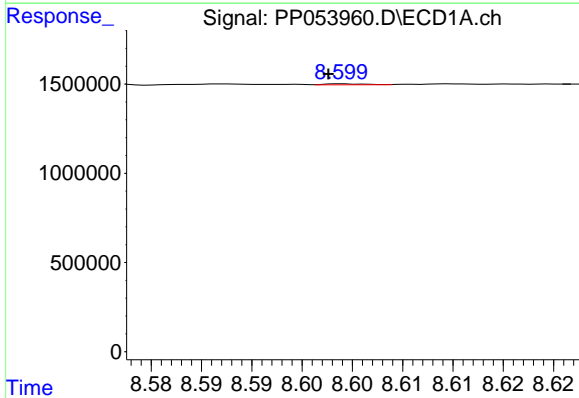
R.T.: 8.283 min  
 Delta R.T.: -0.001 min  
 Response: 279549  
 Conc: 1.46 ng/ml

Instrument :  
 ECD\_P  
 ClientSampleId :



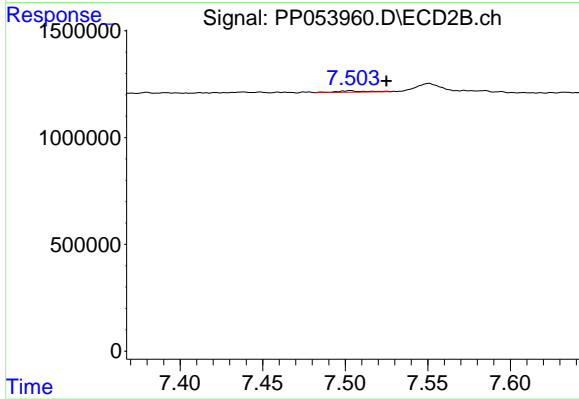
#37 AR-1262-2

R.T.: 6.988 min  
 Delta R.T.: -0.009 min  
 Response: 80740  
 Conc: 1.04 ng/ml



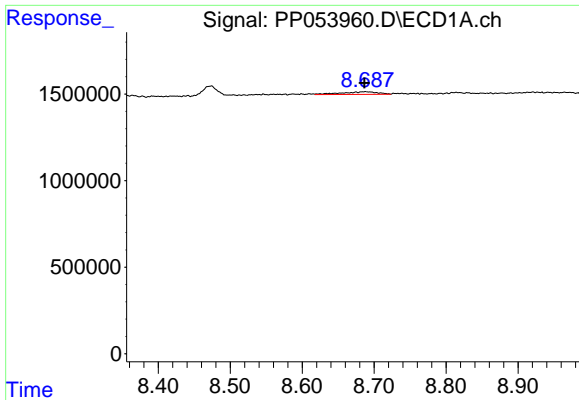
#38 AR-1262-3

R.T.: 8.600 min  
 Delta R.T.: 0.002 min  
 Response: 15078  
 Conc: 0.11 ng/ml



#38 AR-1262-3

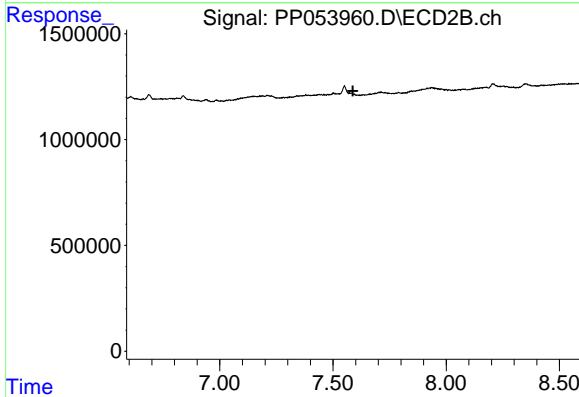
R.T.: 7.503 min  
 Delta R.T.: -0.022 min  
 Response: 86824  
 Conc: 1.38 ng/ml



#39 AR-1262-4

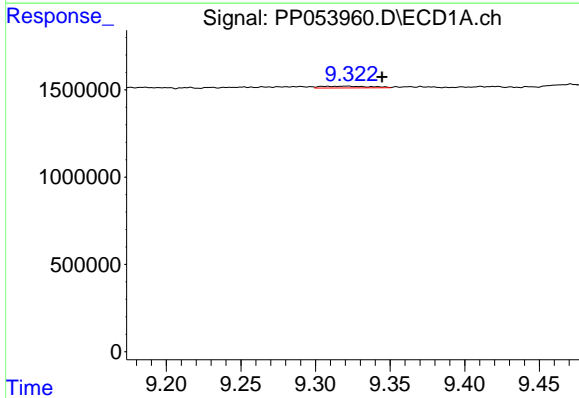
R.T.: 8.688 min  
 Delta R.T.: 0.001 min  
 Response: 536654  
 Conc: 8.62 ng/ml

Instrument :  
 ECD\_P  
 ClientSampleId :



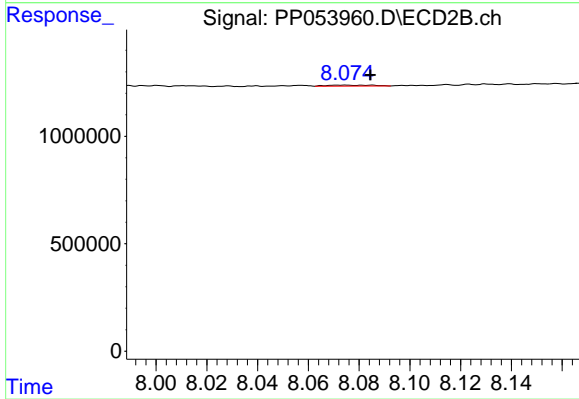
#39 AR-1262-4

R.T.: 0.000 min  
 Exp R.T. : 7.588 min  
 Response: 0  
 Conc: N.D.



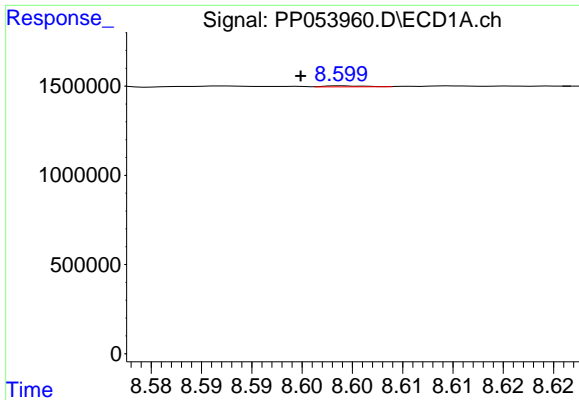
#40 AR-1262-5

R.T.: 9.321 min  
 Delta R.T.: -0.023 min  
 Response: 230916  
 Conc: 3.27 ng/ml



#40 AR-1262-5

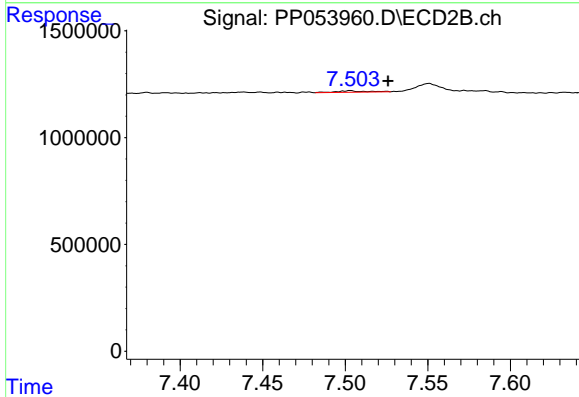
R.T.: 8.085 min  
 Delta R.T.: 0.000 min  
 Response: 54814  
 Conc: 1.10 ng/ml



#41 AR-1268-1

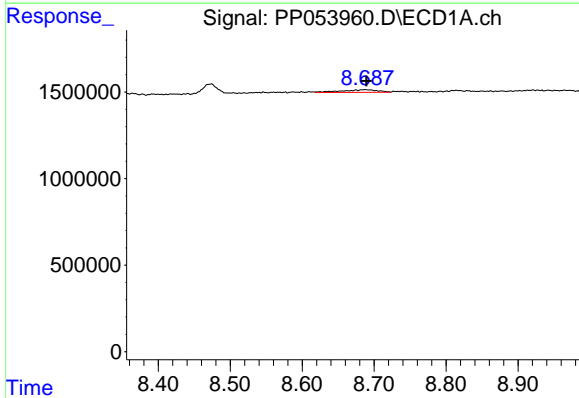
R.T.: 8.600 min  
 Delta R.T.: 0.005 min  
 Response: 15078  
 Conc: 0.06 ng/ml

Instrument :  
 ECD\_P  
 ClientSampleId :



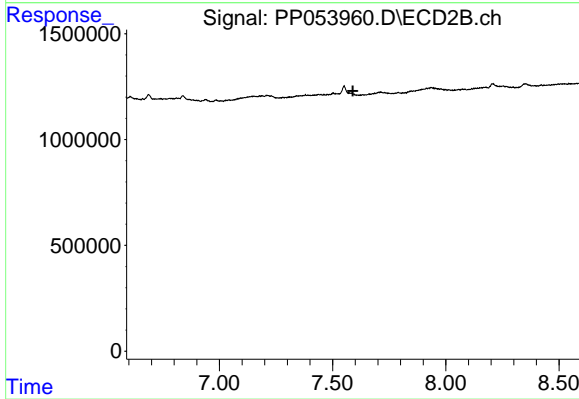
#41 AR-1268-1

R.T.: 7.503 min  
 Delta R.T.: -0.023 min  
 Response: 86824  
 Conc: 0.48 ng/ml



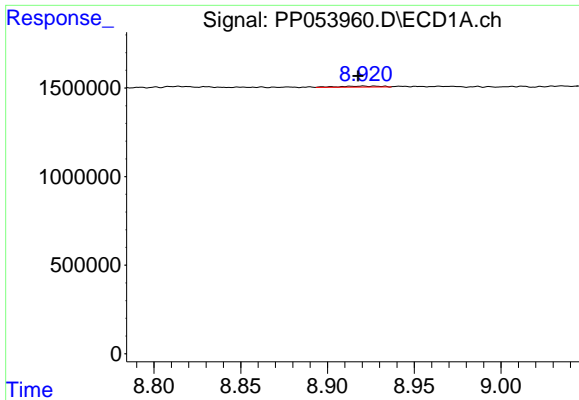
#42 AR-1268-2

R.T.: 8.688 min  
 Delta R.T.: -0.001 min  
 Response: 536654  
 Conc: 2.36 ng/ml



#42 AR-1268-2

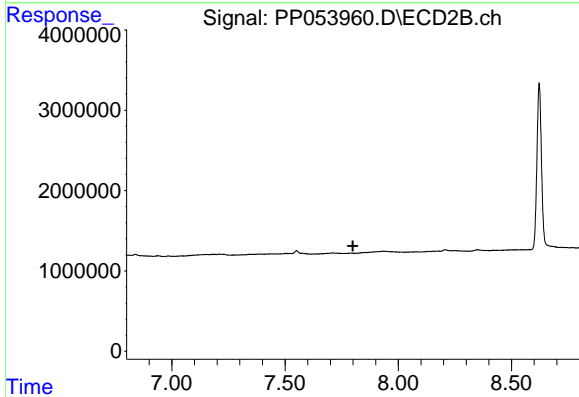
R.T.: 0.000 min  
 Exp R.T. : 7.589 min  
 Response: 0  
 Conc: N.D.



#43 AR-1268-3

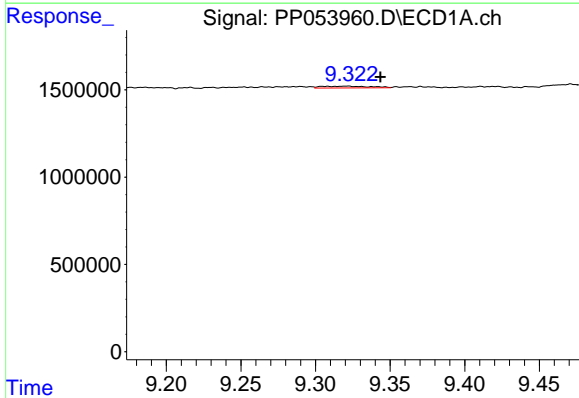
R.T.: 8.921 min  
 Delta R.T.: 0.003 min  
 Response: 96661  
 Conc: 0.50 ng/ml

Instrument :  
 ECD\_P  
 ClientSampleId :



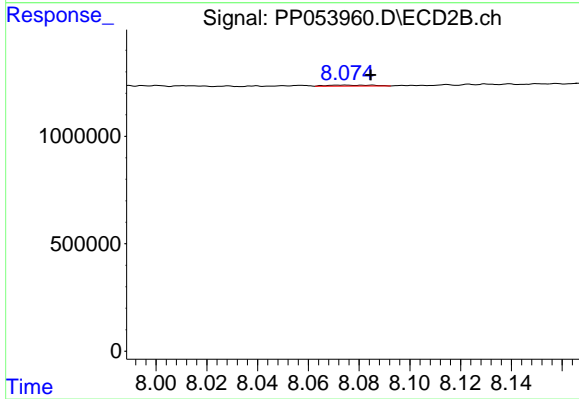
#43 AR-1268-3

R.T.: 0.000 min  
 Exp R.T. : 7.799 min  
 Response: 0  
 Conc: N.D.



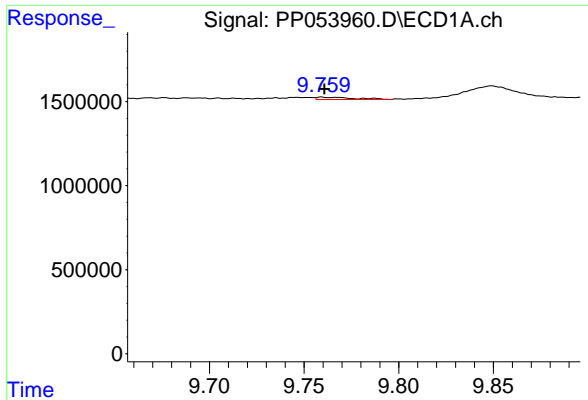
#44 AR-1268-4

R.T.: 9.321 min  
 Delta R.T.: -0.022 min  
 Response: 230916  
 Conc: 3.00 ng/ml



#44 AR-1268-4

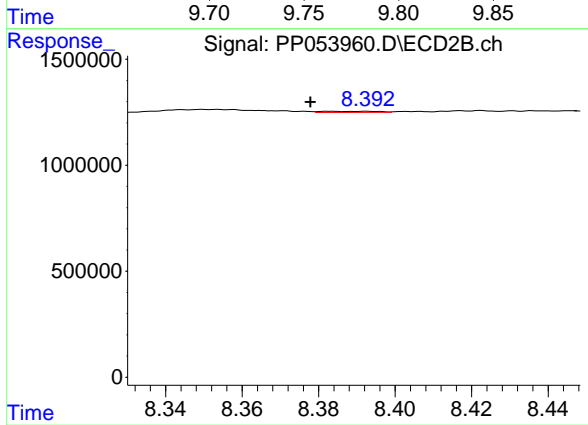
R.T.: 8.085 min  
 Delta R.T.: 0.000 min  
 Response: 54814  
 Conc: 0.98 ng/ml



#45 AR-1268-5

R.T.: 9.759 min  
Delta R.T.: -0.001 min  
Response: 184240  
Conc: 0.31 ng/ml

Instrument :  
ECD\_P  
ClientSampleId :



#45 AR-1268-5

R.T.: 8.393 min  
Delta R.T.: 0.015 min  
Response: 54689  
Conc: 0.12 ng/ml