

Data Path : Z:\pestpcbsrv\HPCHEM1\ECD_P\Data\PP122222\
 Data File : PP053982.D
 Signal(s) : Signal #1: ECD1A.ch Signal #2: ECD2B.ch
 Acq On : 23 Dec 2022 02:32
 Operator : YP\AJ
 Sample : N6161-10
 Misc :
 ALS Vial : 33 Sample Multiplier: 1

Instrument :
 ECD_P
 ClientSampleId :

Integration File signal 1: autoint1.e
 Integration File signal 2: autoint2.e
 Quant Time: Dec 23 10:13:07 2022
 Quant Method : Z:\pestpcbsrv\HPCHEM1\ECD_P\methods\PP121322.M
 Quant Title : GC EXTRACTABLES
 QLast Update : Wed Dec 14 05:38:40 2022
 Response via : Initial Calibration
 Integrator: ChemStation

Volume Inj. : 2 µl
 Signal #1 Phase : ZB-MR1 Signal #2 Phase: ZB-MR2
 Signal #1 Info : 30Mx0.32mmx 0.50µ Signal #2 Info : 30M x 0.32mm x 0.25µm

Compound	RT#1	RT#2	Resp#1	Resp#2	ng/ml	ng/ml
System Monitoring Compounds						
1) SA Tetrachlo...	4.340	3.591	31584971	20766501	15.042	13.297
2) SA Decachlor...	10.108	8.627	8954763	7253630	5.274	5.193
Target Compounds						
3) L1 AR-1016-1	5.525	4.701	7313947	2508870	107.861	54.628 #
4) L1 AR-1016-2	5.525	4.701	7313947	2508870	73.425	40.041 #
5) L1 AR-1016-3	5.610	4.872	5341878	2039849	84.522	60.099 #
6) L1 AR-1016-4	5.687	4.936	5572199	1470364	112.450	49.343 #
7) L1 AR-1016-5	6.007f	5.129	2133530	194839	40.534	5.373 #
8) L2 AR-1221-1	4.547	3.809	12973951	927405	503.609	47.897 #
9) L2 AR-1221-2	4.629	3.915f	5430277	1153809	278.922	78.934 #
10) L2 AR-1221-3	4.699	3.969	5719229	4005145	98.411	90.042
11) L3 AR-1232-1	4.699	3.969	5719229	4005145	127.693	116.390
12) L3 AR-1232-2	5.254	4.701	3913617	2508870	152.142	84.060 #
13) L3 AR-1232-3	5.525	4.872	7313947	2039849	155.825	128.749
14) L3 AR-1232-4	5.687	4.975	5572199	1003145	235.173	64.917 #
16) L4 AR-1242-1	5.525	4.701f	7313947	2508870	139.630	70.845 #
17) L4 AR-1242-2	5.525	4.701	7313947	2508870	95.994	52.222 #
18) L4 AR-1242-3	5.610	4.872	5341878	2039849	109.029	78.243 #
19) L4 AR-1242-4	5.687	4.975	5572199	1003145	145.152	35.163 #
20) L4 AR-1242-5	6.410f	5.474f	4118694	1372578	100.983	44.968 #
21) L5 AR-1248-1	5.525	4.701f	7313947	2508870	173.539	88.193 #
22) L5 AR-1248-2	5.787	4.936	-1182801	1470364	N.D.	35.543 #
23) L5 AR-1248-3	6.007f	4.975	2133530	1003145	30.460	23.886
24) L5 AR-1248-4	6.410	5.129	4118694	194839	58.399	4.050 #
25) L5 AR-1248-5	6.410f	5.520	4118694	968265	58.449	25.787 #
26) L6 AR-1254-1	6.343f	5.474f	2152539	1372578	27.777	20.961
27) L6 AR-1254-2	6.582	5.643	1808889	1466528	15.547	25.146 #
28) L6 AR-1254-3	6.964	6.049	1269088	1127016	10.835	12.811
29) L6 AR-1254-4	0.000	6.270	0	2052663	N.D.	44.803 #
30) L6 AR-1254-5	7.689f	6.703	1798164	755237	18.438	9.691 #
31) L7 AR-1260-1	7.116	6.164	1376816	1834052	14.257	28.117 #
32) L7 AR-1260-2	7.398f	6.380	62752614	342628	568.045	4.550 #
33) L7 AR-1260-3	7.749	6.504f	2073485	52432113	27.424	723.359 #
34) L7 AR-1260-4	7.981	0.000	4584580	0	48.848	N.D. #
35) L7 AR-1260-5	8.265f	7.245	758872	1733865	4.786	14.499 #
36) L8 AR-1262-1	7.749	6.814f	2073485	13910560	17.321	390.027 #
37) L8 AR-1262-2	8.265f	0.000	758872	0	3.958	N.D. #
38) L8 AR-1262-3	0.000	7.553f	0	691076	N.D.	10.969 #
39) L8 AR-1262-4	8.682	7.591	897596	271341	14.422	2.373 #
40) L8 AR-1262-5	9.361f	8.088	871368	350934	12.331	7.045 #
41) L9 AR-1268-1	0.000	7.553f	0	691076	N.D.	3.820 #
42) L9 AR-1268-2	8.682	7.591	897596	271341	3.949	1.590 #

Data Path : Z:\pestpcbsrv\HPCHEM1\ECD_P\Data\PP122222\
 Data File : PP053982.D
 Signal(s) : Signal #1: ECD1A.ch Signal #2: ECD2B.ch
 Acq On : 23 Dec 2022 02:32
 Operator : YP\AJ
 Sample : N6161-10
 Misc :
 ALS Vial : 33 Sample Multiplier: 1

Instrument :
 ECD_P
 ClientSampleId :

Integration File signal 1: autoint1.e
 Integration File signal 2: autoint2.e
 Quant Time: Dec 23 10:13:07 2022
 Quant Method : Z:\pestpcbsrv\HPCHEM1\ECD_P\methods\PP121322.M
 Quant Title : GC EXTRACTABLES
 QLast Update : Wed Dec 14 05:38:40 2022
 Response via : Initial Calibration
 Integrator: ChemStation

Volume Inj. : 2 µl
 Signal #1 Phase : ZB-MR1 Signal #2 Phase: ZB-MR2
 Signal #1 Info : 30Mx0.32mmx 0.50µ Signal #2 Info : 30M x 0.32mm x 0.25µm

	Compound	RT#1	RT#2	Resp#1	Resp#2	ng/ml	ng/ml
43)	L9 AR-1268-3	8.925	7.811	699300	1460283	3.649	9.887 #
44)	L9 AR-1268-4	9.361f	8.088	871368	350934	11.320	6.297 #
45)	L9 AR-1268-5	9.751	8.384	206852	79249	0.352	0.168 #

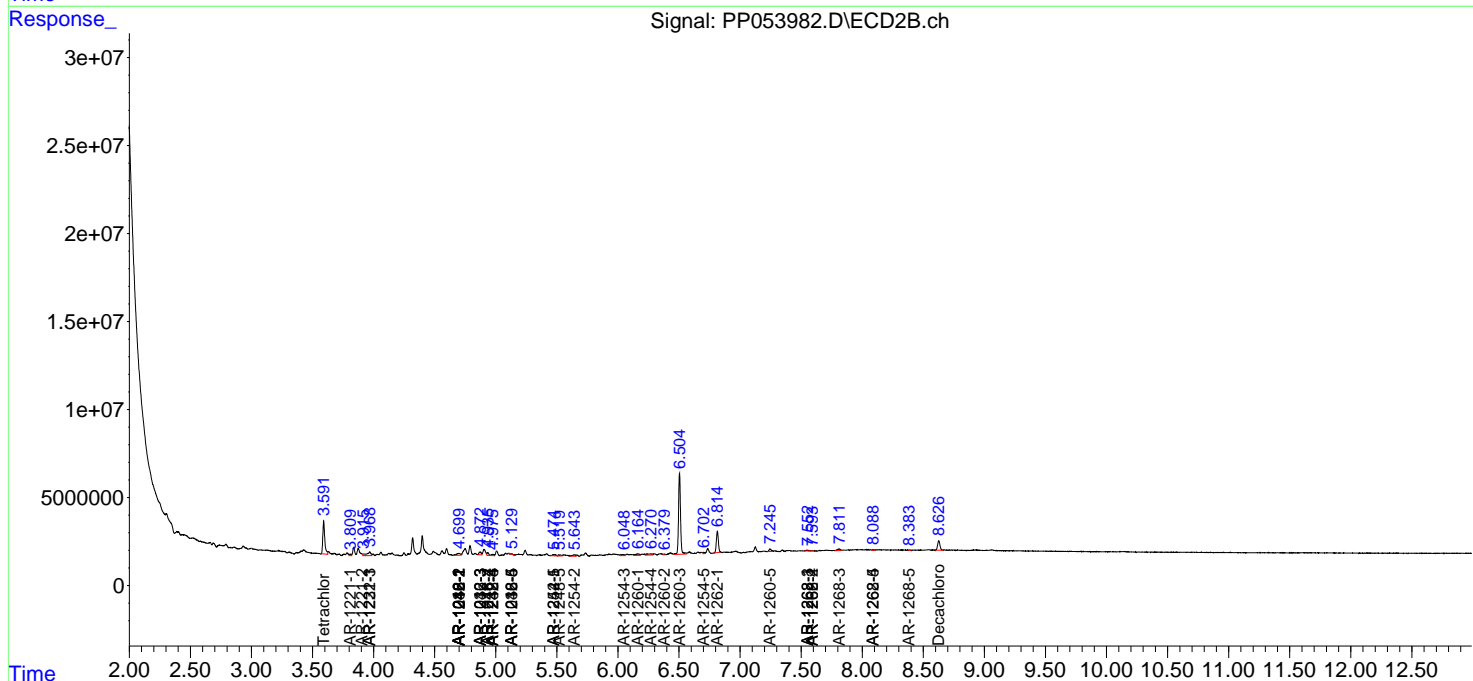
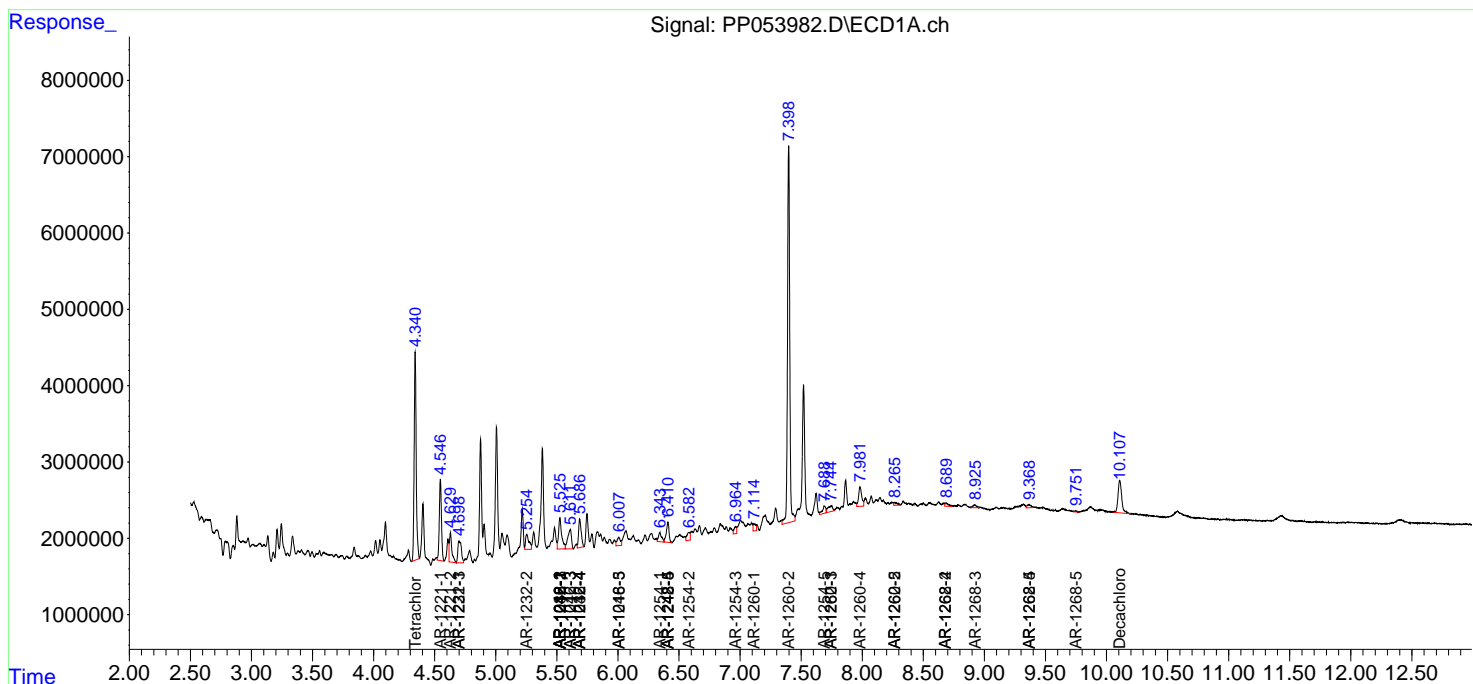
(f)=RT Delta > 1/2 Window (#)=Amounts differ by > 25% (m)=manual int.

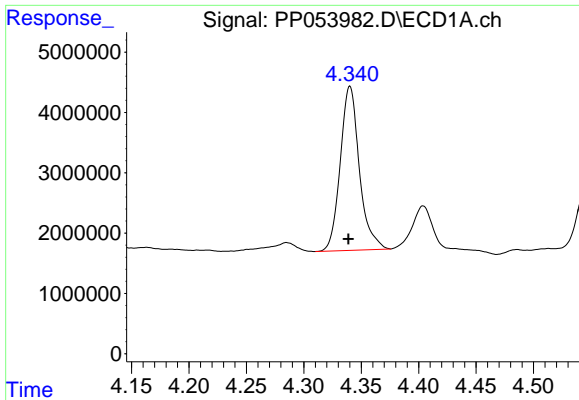
Data Path : Z:\pestpcbsrv\HPCHEM1\ECD_P\Data\PP122222\
 Data File : PP053982.D
 Signal(s) : Signal #1: ECD1A.ch Signal #2: ECD2B.ch
 Acq On : 23 Dec 2022 02:32
 Operator : YP\AJ
 Sample : N6161-10
 Misc :
 ALS Vial : 33 Sample Multiplier: 1

Instrument :
 ECD_P
 ClientSampleId :

Integration File signal 1: autoint1.e
 Integration File signal 2: autoint2.e
 Quant Time: Dec 23 10:13:07 2022
 Quant Method : Z:\pestpcbsrv\HPCHEM1\ECD_P\methods\PP121322.M
 Quant Title : GC EXTRACTABLES
 QLast Update : Wed Dec 14 05:38:40 2022
 Response via : Initial Calibration
 Integrator: ChemStation

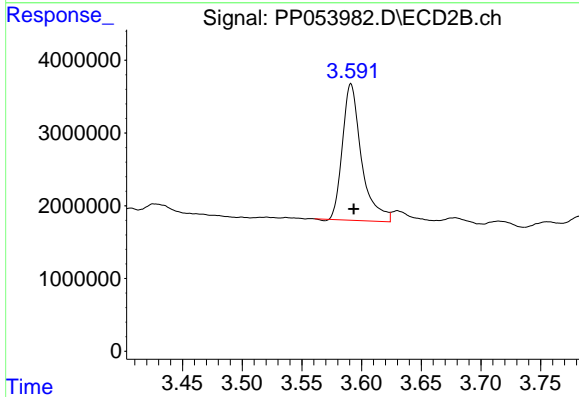
Volume Inj. : 2 µl
 Signal #1 Phase : ZB-MR1 Signal #2 Phase: ZB-MR2
 Signal #1 Info : 30Mx0.32mmx 0.50µ Signal #2 Info : 30M x 0.32mm x 0.25µm



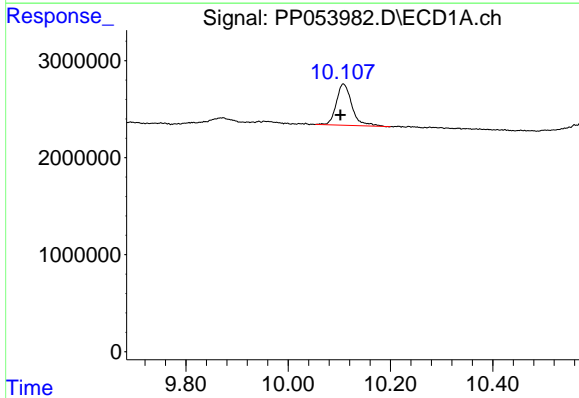


#1 Tetrachloro-m-xylene
 R.T.: 4.340 min
 Delta R.T.: 0.001 min
 Response: 31584971
 Conc: 15.04 ng/ml

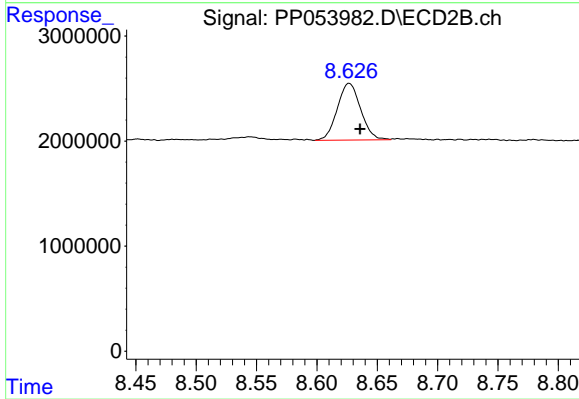
Instrument :
 ECD_P
 ClientSampleId :



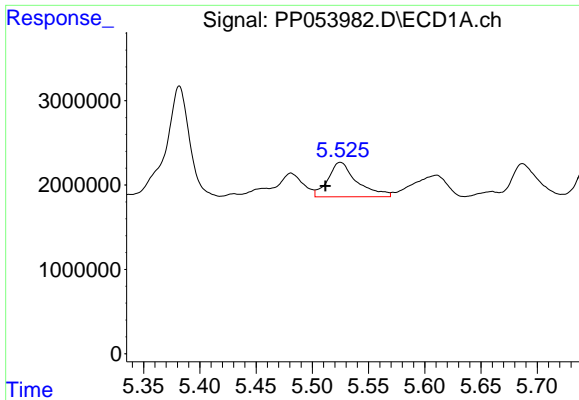
#1 Tetrachloro-m-xylene
 R.T.: 3.591 min
 Delta R.T.: -0.002 min
 Response: 20766501
 Conc: 13.30 ng/ml



#2 Decachlorobiphenyl
 R.T.: 10.108 min
 Delta R.T.: 0.006 min
 Response: 8954763
 Conc: 5.27 ng/ml



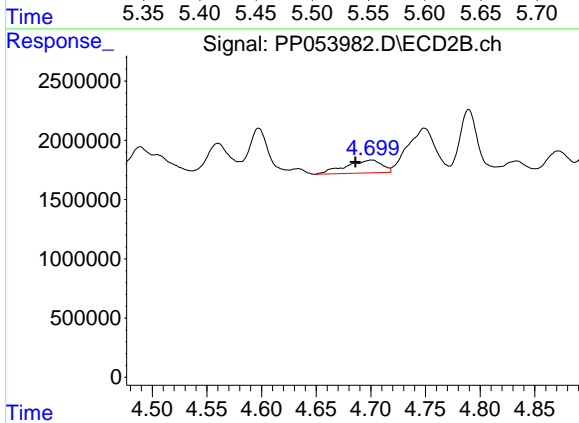
#2 Decachlorobiphenyl
 R.T.: 8.627 min
 Delta R.T.: -0.009 min
 Response: 7253630
 Conc: 5.19 ng/ml



#3 AR-1016-1

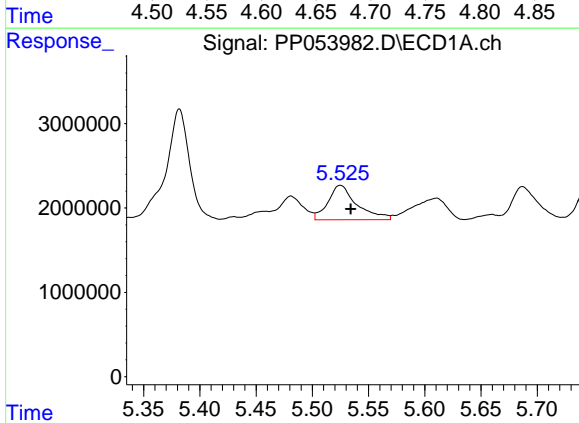
R.T.: 5.525 min
 Delta R.T.: 0.013 min
 Response: 7313947
 Conc: 107.86 ng/ml

Instrument :
 ECD_P
 ClientSampleId :



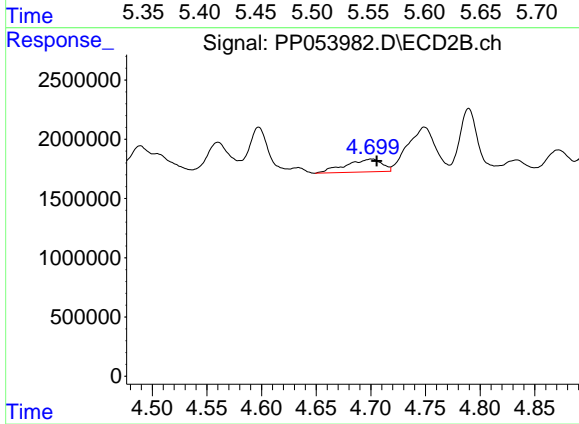
#3 AR-1016-1

R.T.: 4.701 min
 Delta R.T.: 0.015 min
 Response: 2508870
 Conc: 54.63 ng/ml



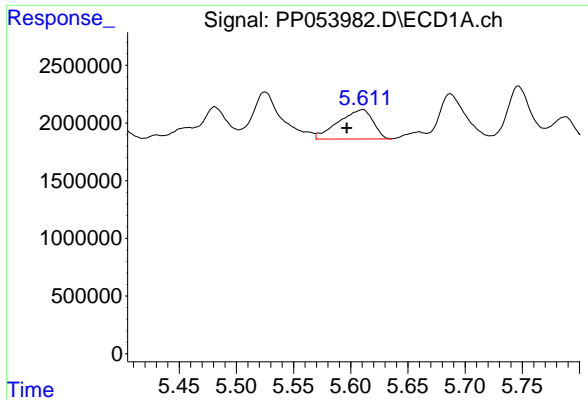
#4 AR-1016-2

R.T.: 5.525 min
 Delta R.T.: -0.009 min
 Response: 7313947
 Conc: 73.43 ng/ml



#4 AR-1016-2

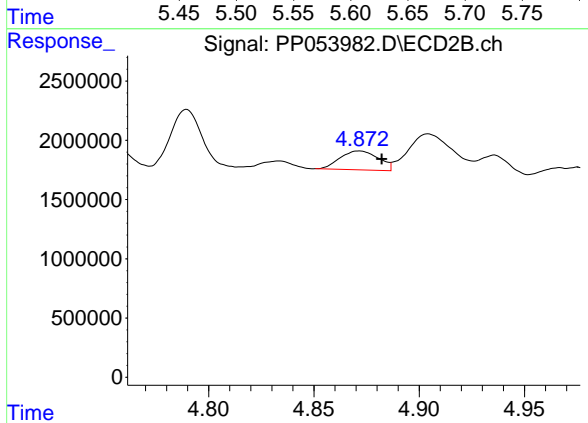
R.T.: 4.701 min
 Delta R.T.: -0.004 min
 Response: 2508870
 Conc: 40.04 ng/ml



#5 AR-1016-3

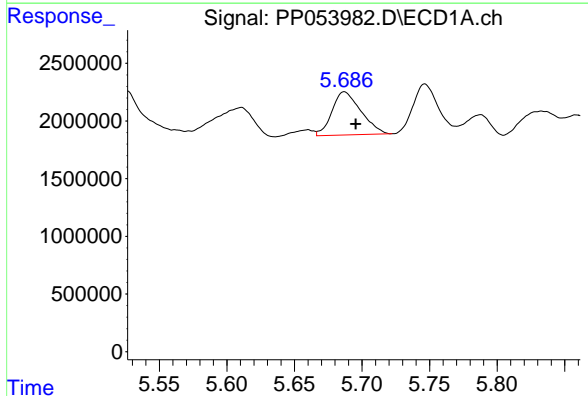
R.T.: 5.610 min
 Delta R.T.: 0.014 min
 Response: 5341878
 Conc: 84.52 ng/ml

Instrument :
 ECD_P
 ClientSampleId :



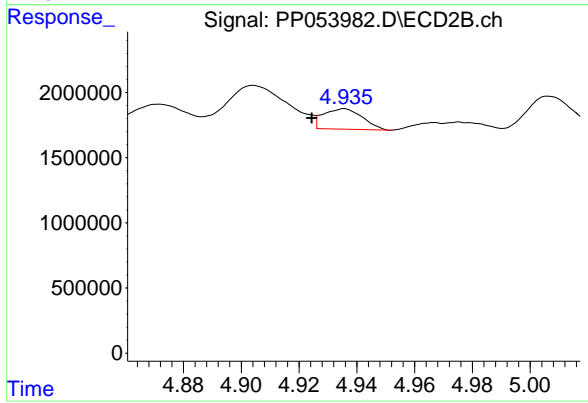
#5 AR-1016-3

R.T.: 4.872 min
 Delta R.T.: -0.011 min
 Response: 2039849
 Conc: 60.10 ng/ml



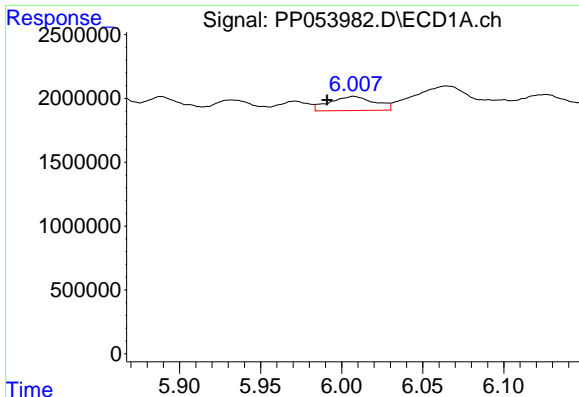
#6 AR-1016-4

R.T.: 5.687 min
 Delta R.T.: -0.008 min
 Response: 5572199
 Conc: 112.45 ng/ml



#6 AR-1016-4

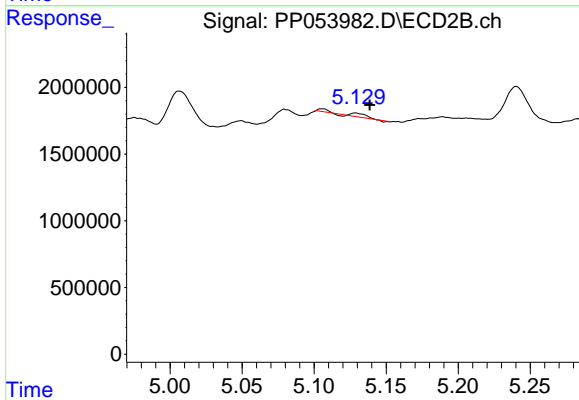
R.T.: 4.936 min
 Delta R.T.: 0.011 min
 Response: 1470364
 Conc: 49.34 ng/ml



#7 AR-1016-5

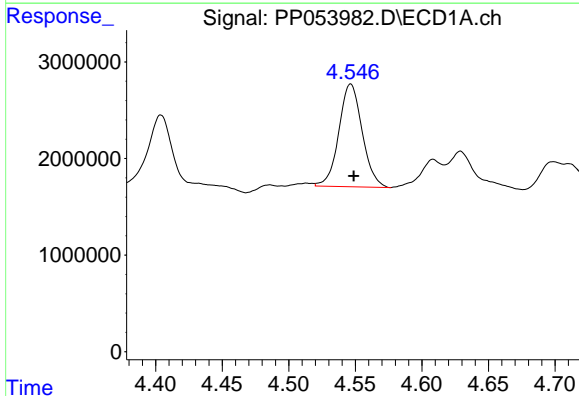
R.T.: 6.007 min
 Delta R.T.: 0.016 min
 Response: 2133530
 Conc: 40.53 ng/ml

Instrument :
 ECD_P
 ClientSampleId :



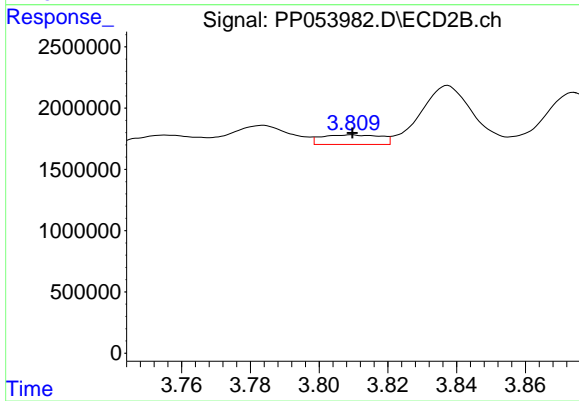
#7 AR-1016-5

R.T.: 5.129 min
 Delta R.T.: -0.010 min
 Response: 194839
 Conc: 5.37 ng/ml



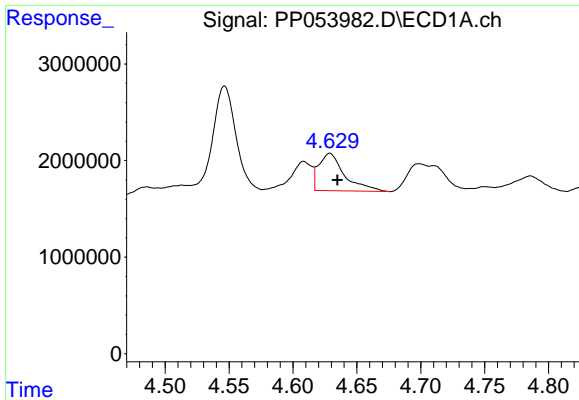
#8 AR-1221-1

R.T.: 4.547 min
 Delta R.T.: -0.002 min
 Response: 12973951
 Conc: 503.61 ng/ml



#8 AR-1221-1

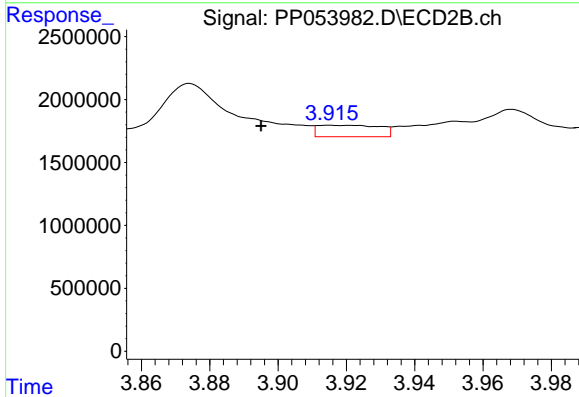
R.T.: 3.809 min
 Delta R.T.: 0.000 min
 Response: 927405
 Conc: 47.90 ng/ml



#9 AR-1221-2

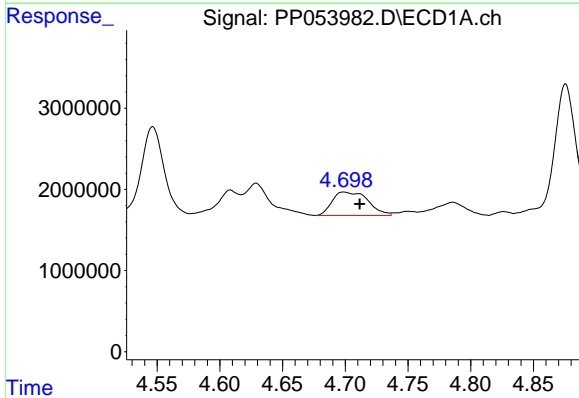
R.T.: 4.629 min
 Delta R.T.: -0.006 min
 Response: 5430277
 Conc: 278.92 ng/ml

Instrument :
 ECD_P
 ClientSampleId :



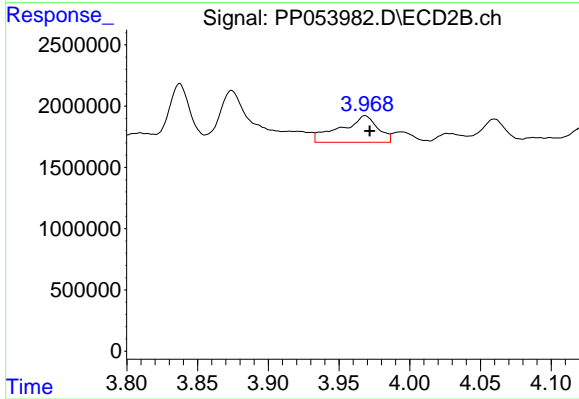
#9 AR-1221-2

R.T.: 3.915 min
 Delta R.T.: 0.020 min
 Response: 1153809
 Conc: 78.93 ng/ml



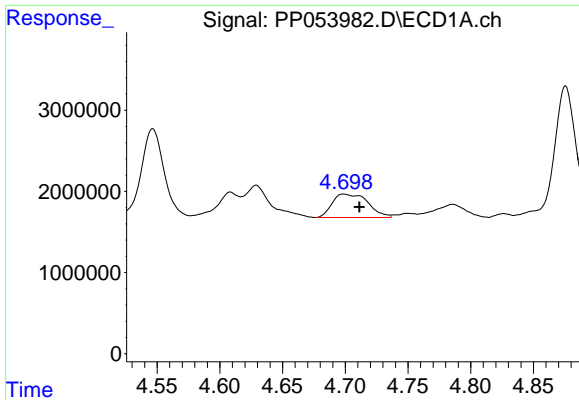
#10 AR-1221-3

R.T.: 4.699 min
 Delta R.T.: -0.013 min
 Response: 5719229
 Conc: 98.41 ng/ml



#10 AR-1221-3

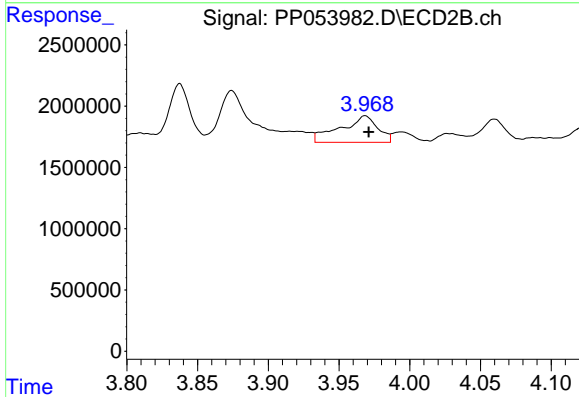
R.T.: 3.969 min
 Delta R.T.: -0.003 min
 Response: 4005145
 Conc: 90.04 ng/ml



#11 AR-1232-1

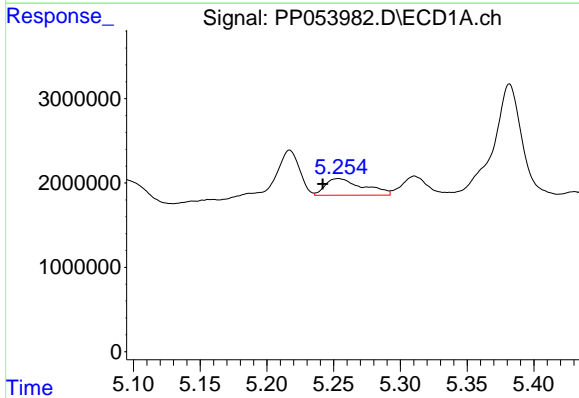
R.T.: 4.699 min
 Delta R.T.: -0.012 min
 Response: 5719229
 Conc: 127.69 ng/ml

Instrument :
 ECD_P
 ClientSampleId :



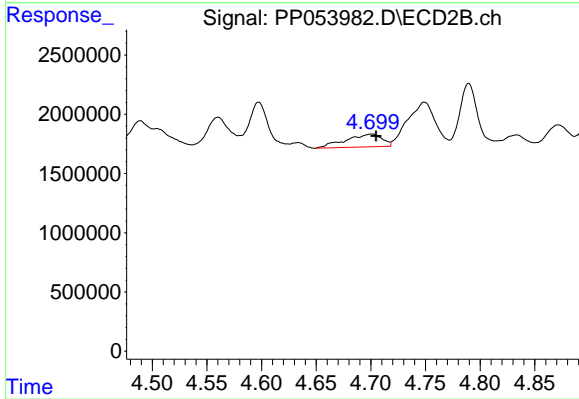
#11 AR-1232-1

R.T.: 3.969 min
 Delta R.T.: -0.003 min
 Response: 4005145
 Conc: 116.39 ng/ml



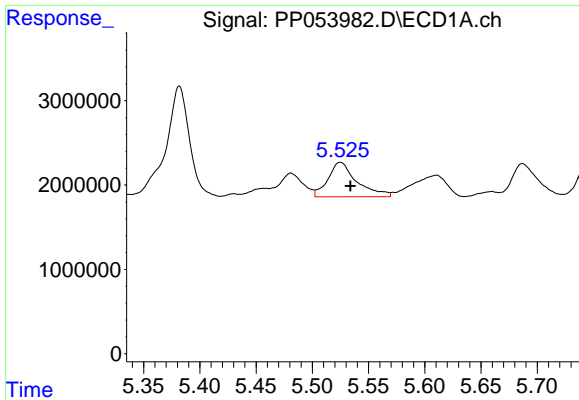
#12 AR-1232-2

R.T.: 5.254 min
 Delta R.T.: 0.012 min
 Response: 3913617
 Conc: 152.14 ng/ml



#12 AR-1232-2

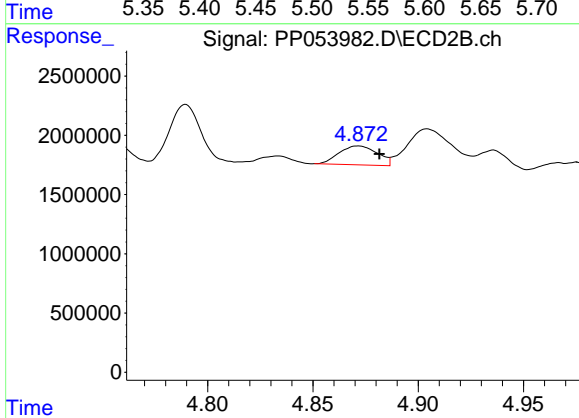
R.T.: 4.701 min
 Delta R.T.: -0.004 min
 Response: 2508870
 Conc: 84.06 ng/ml



#13 AR-1232-3

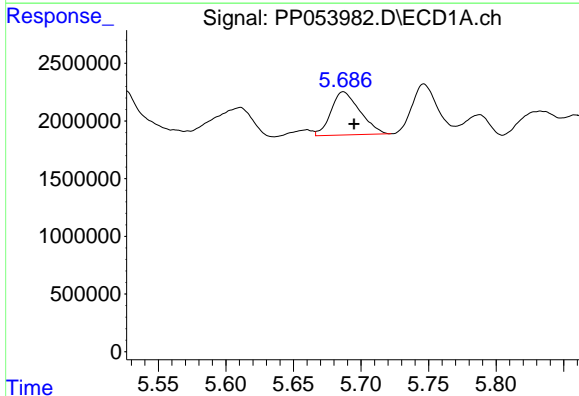
R.T.: 5.525 min
 Delta R.T.: -0.009 min
 Response: 7313947
 Conc: 155.83 ng/ml

Instrument :
 ECD_P
 ClientSampleId :



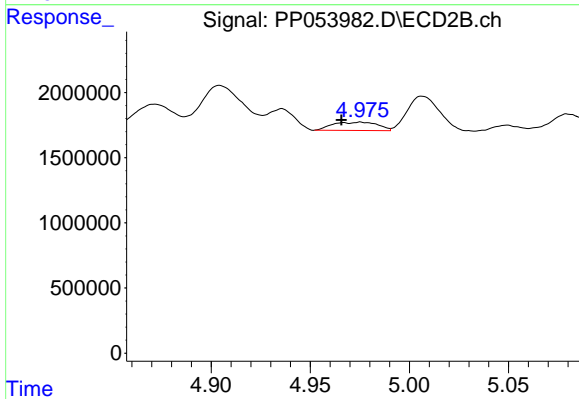
#13 AR-1232-3

R.T.: 4.872 min
 Delta R.T.: -0.010 min
 Response: 2039849
 Conc: 128.75 ng/ml



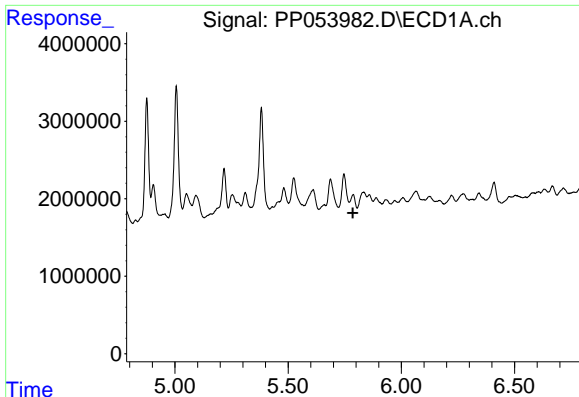
#14 AR-1232-4

R.T.: 5.687 min
 Delta R.T.: -0.008 min
 Response: 5572199
 Conc: 235.17 ng/ml



#14 AR-1232-4

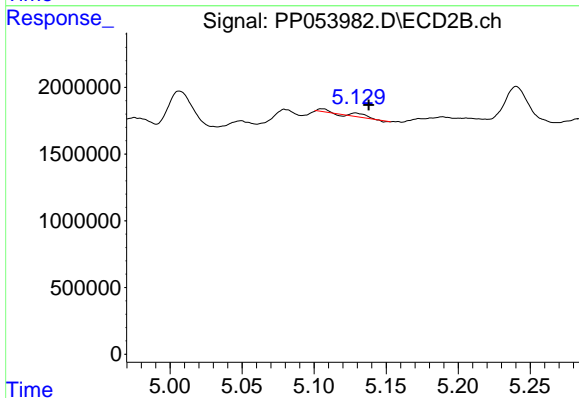
R.T.: 4.975 min
 Delta R.T.: 0.010 min
 Response: 1003145
 Conc: 64.92 ng/ml



#15 AR-1232-5

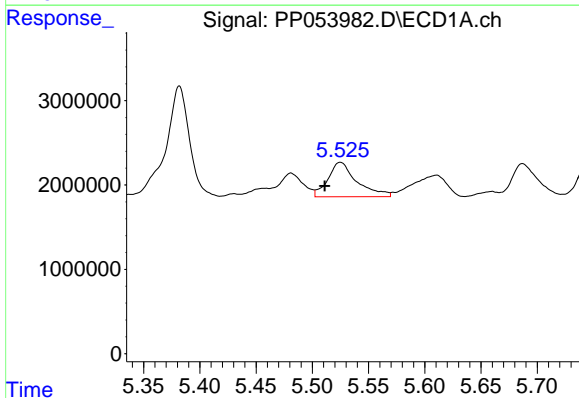
R.T.: 5.787 min
 Delta R.T.: 0.001 min
 Response: -1182801
 Conc: N.D.

Instrument :
 ECD_P
 ClientSampleId :



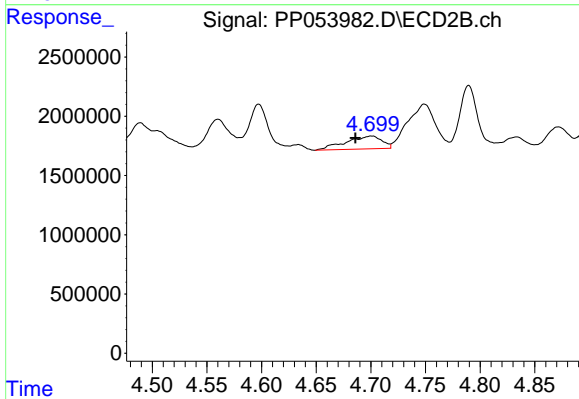
#15 AR-1232-5

R.T.: 5.129 min
 Delta R.T.: -0.009 min
 Response: 194839
 Conc: 11.83 ng/ml



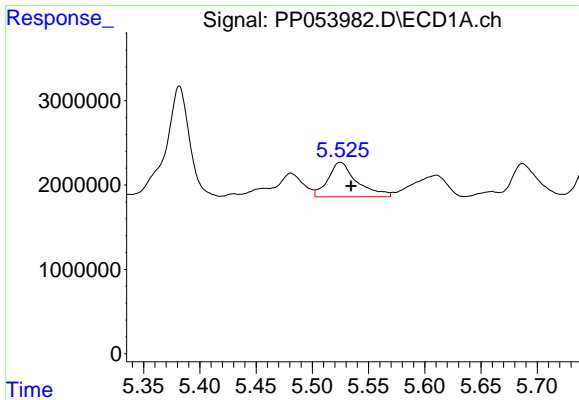
#16 AR-1242-1

R.T.: 5.525 min
 Delta R.T.: 0.014 min
 Response: 7313947
 Conc: 139.63 ng/ml



#16 AR-1242-1

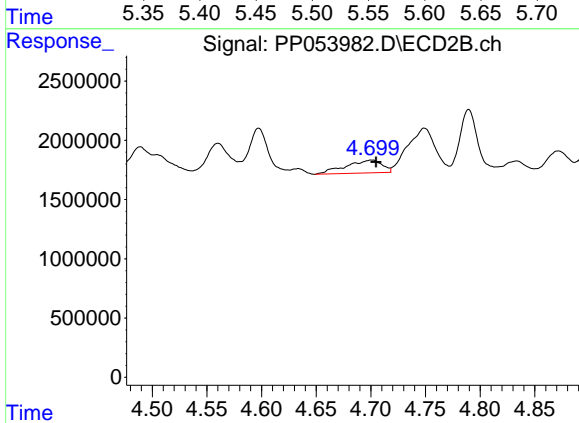
R.T.: 4.701 min
 Delta R.T.: 0.015 min
 Response: 2508870
 Conc: 70.84 ng/ml



#17 AR-1242-2

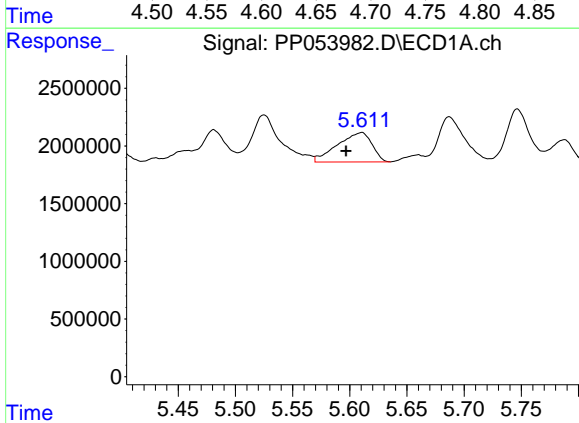
R.T.: 5.525 min
 Delta R.T.: -0.009 min
 Response: 7313947
 Conc: 95.99 ng/ml

Instrument :
 ECD_P
 ClientSampleId :



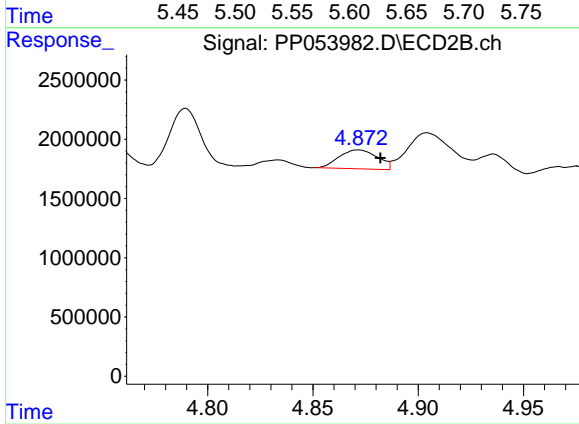
#17 AR-1242-2

R.T.: 4.701 min
 Delta R.T.: -0.004 min
 Response: 2508870
 Conc: 52.22 ng/ml



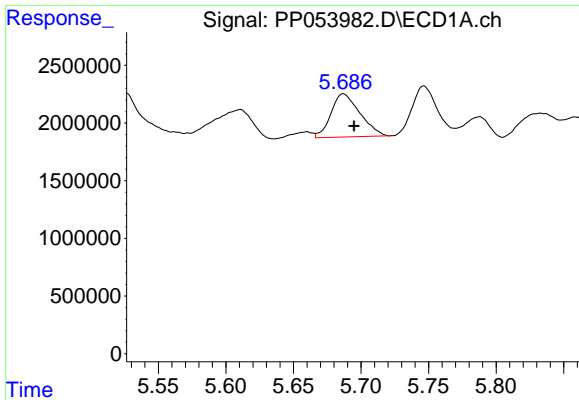
#18 AR-1242-3

R.T.: 5.610 min
 Delta R.T.: 0.014 min
 Response: 5341878
 Conc: 109.03 ng/ml



#18 AR-1242-3

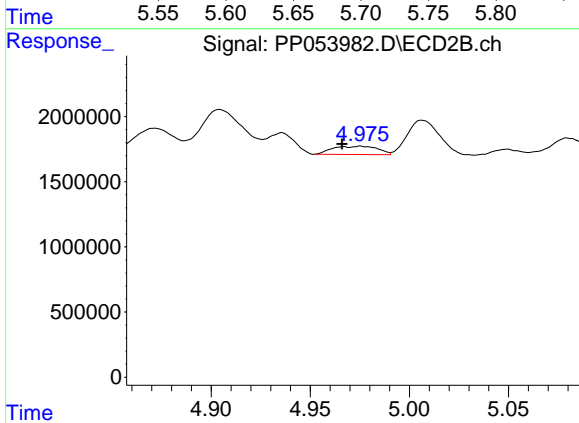
R.T.: 4.872 min
 Delta R.T.: -0.011 min
 Response: 2039849
 Conc: 78.24 ng/ml



#19 AR-1242-4

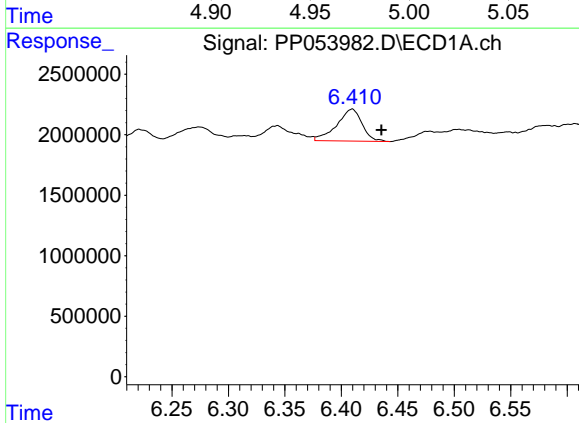
R.T.: 5.687 min
 Delta R.T.: -0.008 min
 Response: 5572199
 Conc: 145.15 ng/ml

Instrument :
 ECD_P
 ClientSampleId :



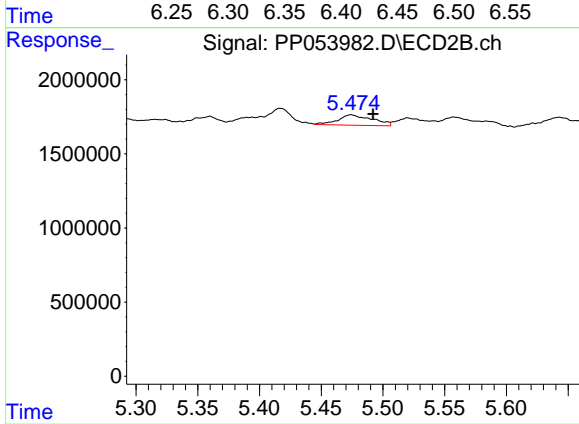
#19 AR-1242-4

R.T.: 4.975 min
 Delta R.T.: 0.009 min
 Response: 1003145
 Conc: 35.16 ng/ml



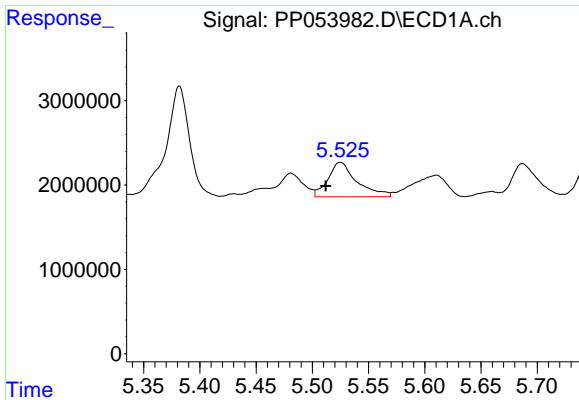
#20 AR-1242-5

R.T.: 6.410 min
 Delta R.T.: -0.026 min
 Response: 4118694
 Conc: 100.98 ng/ml



#20 AR-1242-5

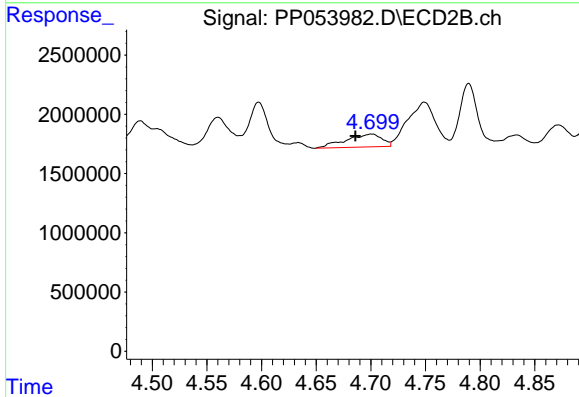
R.T.: 5.474 min
 Delta R.T.: -0.018 min
 Response: 1372578
 Conc: 44.97 ng/ml



#21 AR-1248-1

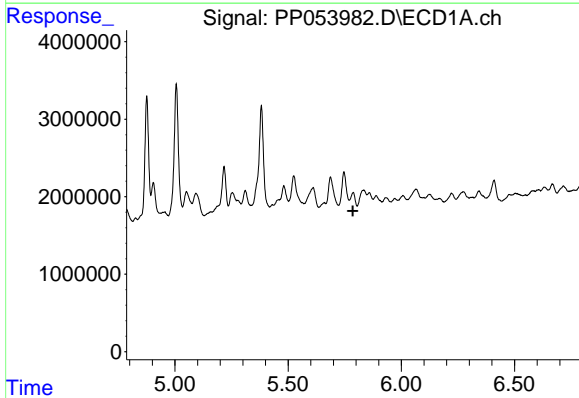
R.T.: 5.525 min
 Delta R.T.: 0.013 min
 Response: 7313947
 Conc: 173.54 ng/ml

Instrument :
 ECD_P
 ClientSampleId :



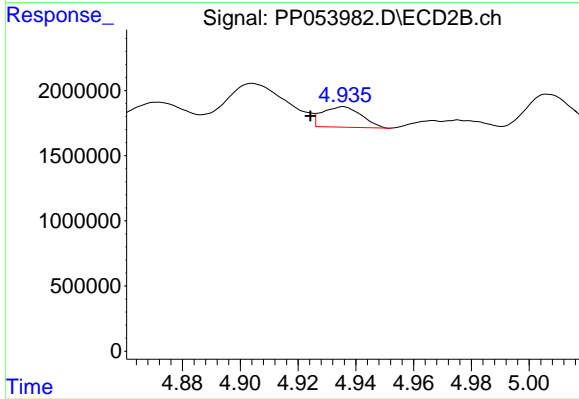
#21 AR-1248-1

R.T.: 4.701 min
 Delta R.T.: 0.015 min
 Response: 2508870
 Conc: 88.19 ng/ml



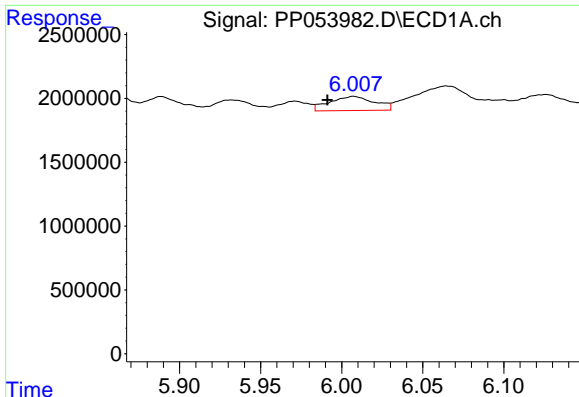
#22 AR-1248-2

R.T.: 5.787 min
 Delta R.T.: 0.001 min
 Response: -1182801
 Conc: N.D.



#22 AR-1248-2

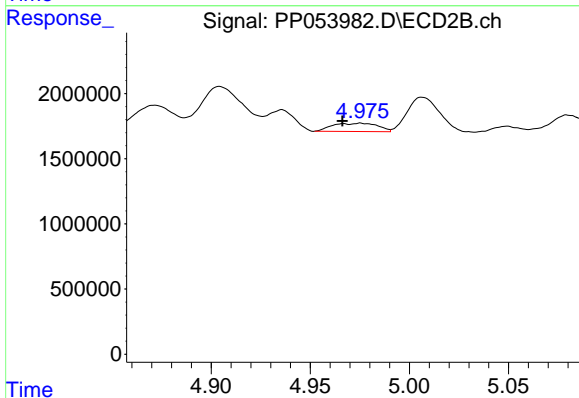
R.T.: 4.936 min
 Delta R.T.: 0.011 min
 Response: 1470364
 Conc: 35.54 ng/ml



#23 AR-1248-3

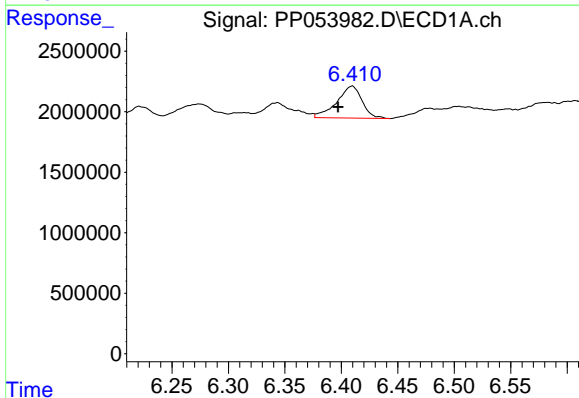
R.T.: 6.007 min
 Delta R.T.: 0.016 min
 Response: 2133530
 Conc: 30.46 ng/ml

Instrument :
 ECD_P
 ClientSampleId :



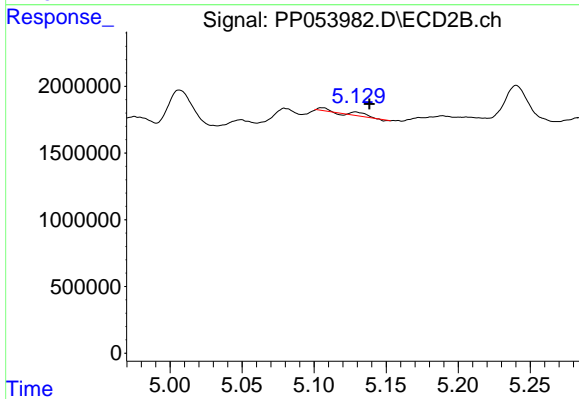
#23 AR-1248-3

R.T.: 4.975 min
 Delta R.T.: 0.009 min
 Response: 1003145
 Conc: 23.89 ng/ml



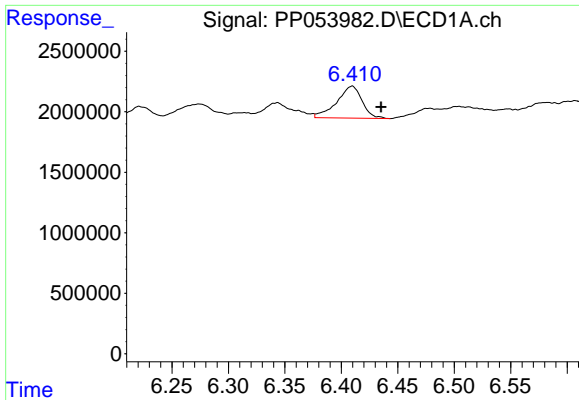
#24 AR-1248-4

R.T.: 6.410 min
 Delta R.T.: 0.012 min
 Response: 4118694
 Conc: 58.40 ng/ml



#24 AR-1248-4

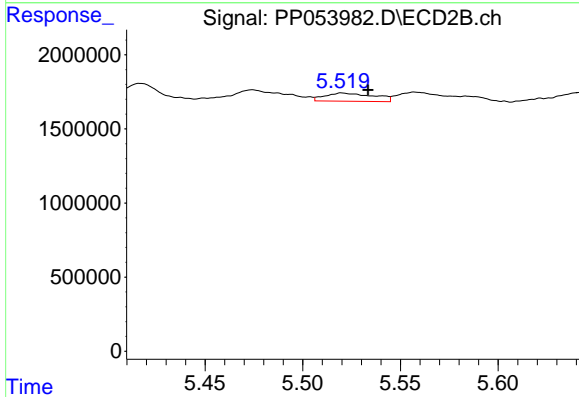
R.T.: 5.129 min
 Delta R.T.: -0.010 min
 Response: 194839
 Conc: 4.05 ng/ml



#25 AR-1248-5

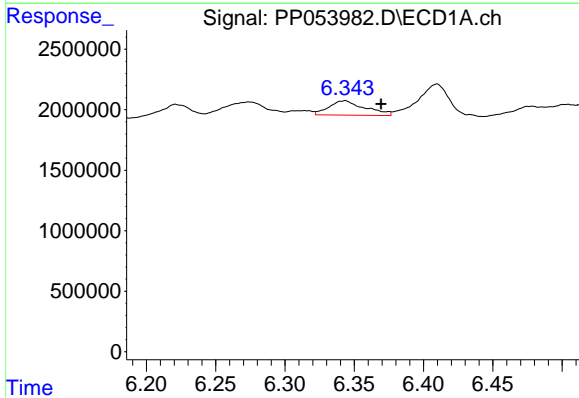
R.T.: 6.410 min
 Delta R.T.: -0.026 min
 Response: 4118694
 Conc: 58.45 ng/ml

Instrument :
 ECD_P
 ClientSampleId :



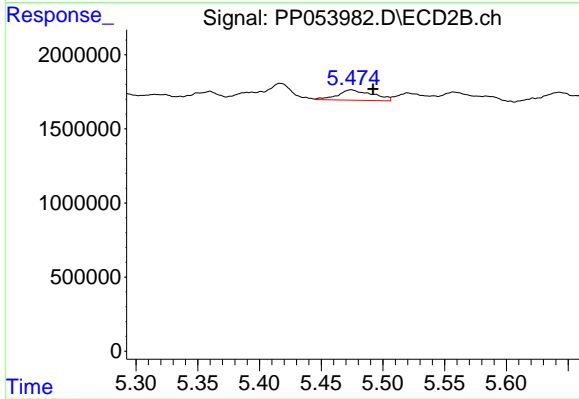
#25 AR-1248-5

R.T.: 5.520 min
 Delta R.T.: -0.013 min
 Response: 968265
 Conc: 25.79 ng/ml



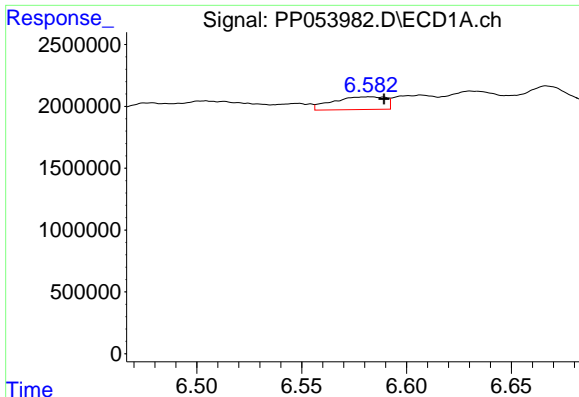
#26 AR-1254-1

R.T.: 6.343 min
 Delta R.T.: -0.026 min
 Response: 2152539
 Conc: 27.78 ng/ml



#26 AR-1254-1

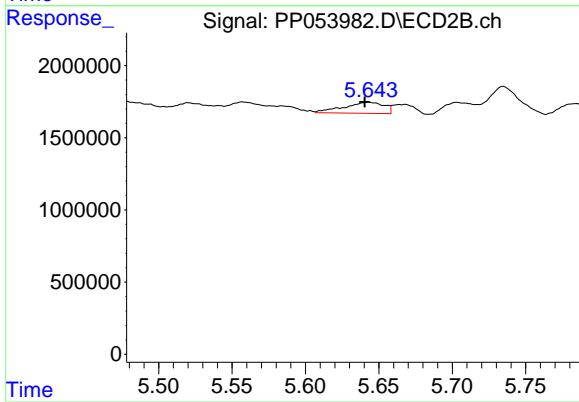
R.T.: 5.474 min
 Delta R.T.: -0.018 min
 Response: 1372578
 Conc: 20.96 ng/ml



#27 AR-1254-2

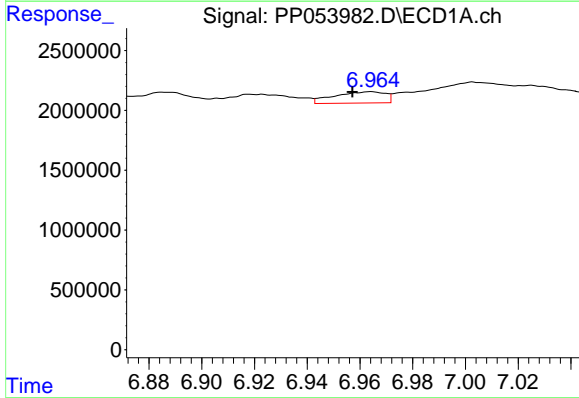
R.T.: 6.582 min
 Delta R.T.: -0.007 min
 Response: 1808889
 Conc: 15.55 ng/ml

Instrument :
 ECD_P
 ClientSampleId :



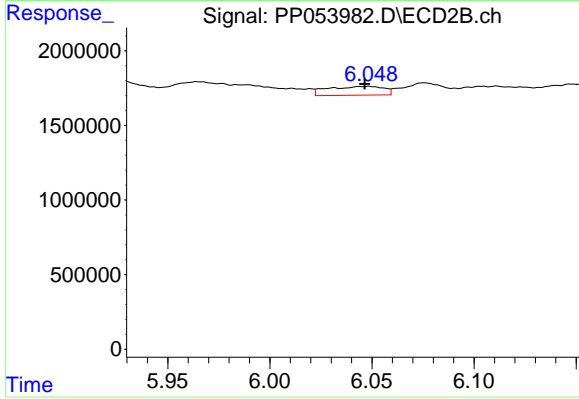
#27 AR-1254-2

R.T.: 5.643 min
 Delta R.T.: 0.002 min
 Response: 1466528
 Conc: 25.15 ng/ml



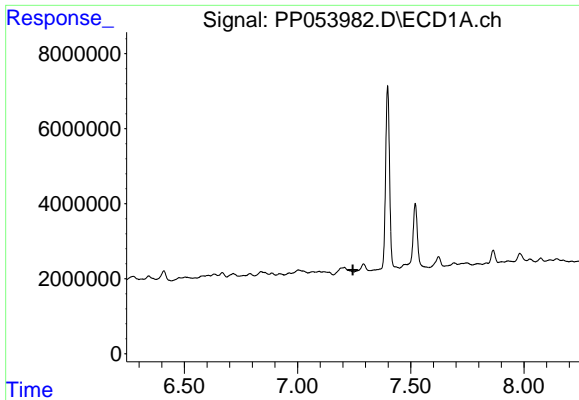
#28 AR-1254-3

R.T.: 6.964 min
 Delta R.T.: 0.007 min
 Response: 1269088
 Conc: 10.84 ng/ml



#28 AR-1254-3

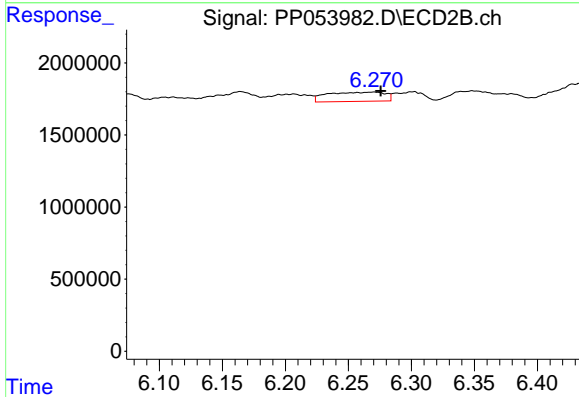
R.T.: 6.049 min
 Delta R.T.: 0.002 min
 Response: 1127016
 Conc: 12.81 ng/ml



#29 AR-1254-4

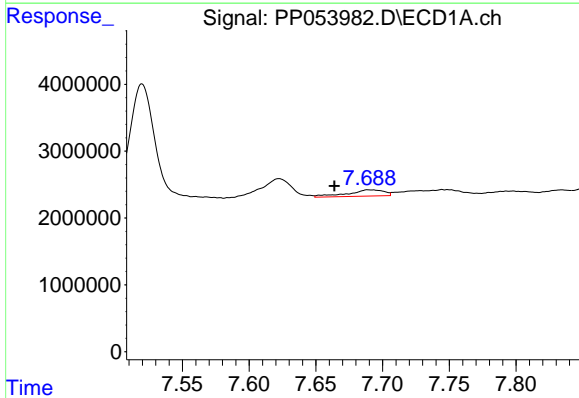
R.T.: 0.000 min
 Exp R.T.: 7.244 min
 Response: 0
 Conc: N.D.

Instrument :
 ECD_P
 ClientSampleId :



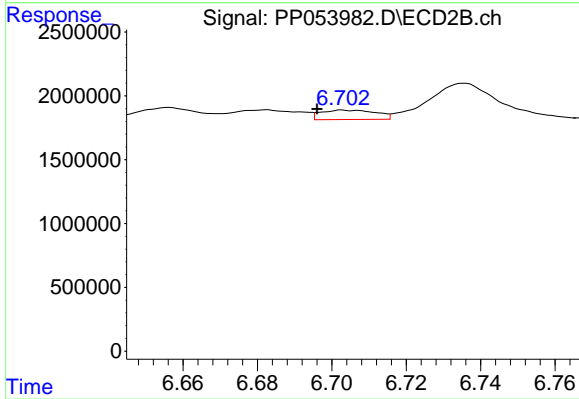
#29 AR-1254-4

R.T.: 6.270 min
 Delta R.T.: -0.005 min
 Response: 2052663
 Conc: 44.80 ng/ml



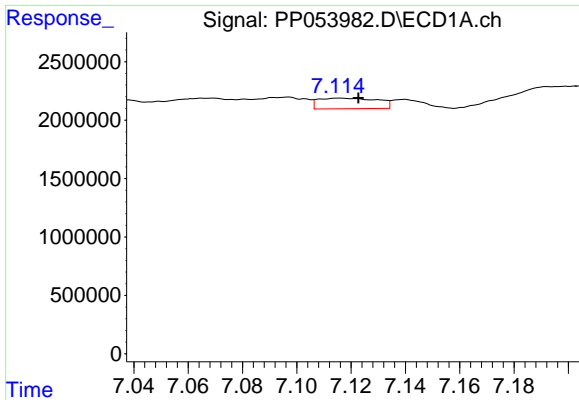
#30 AR-1254-5

R.T.: 7.689 min
 Delta R.T.: 0.026 min
 Response: 1798164
 Conc: 18.44 ng/ml



#30 AR-1254-5

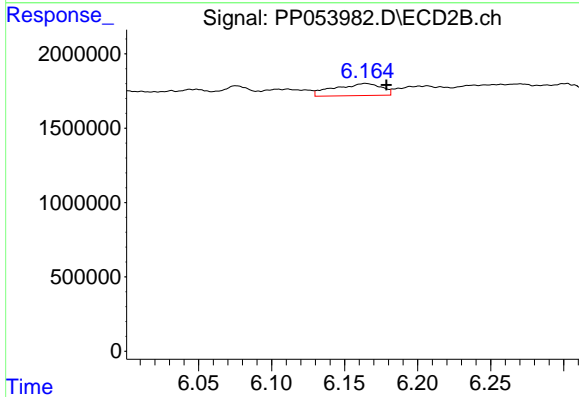
R.T.: 6.703 min
 Delta R.T.: 0.007 min
 Response: 755237
 Conc: 9.69 ng/ml



#31 AR-1260-1

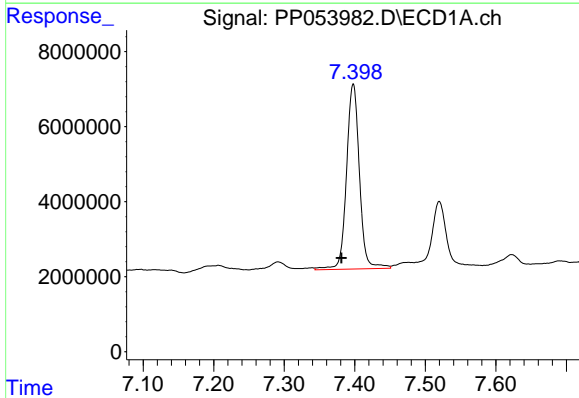
R.T.: 7.116 min
 Delta R.T.: -0.007 min
 Response: 1376816
 Conc: 14.26 ng/ml

Instrument :
 ECD_P
 ClientSampleId :



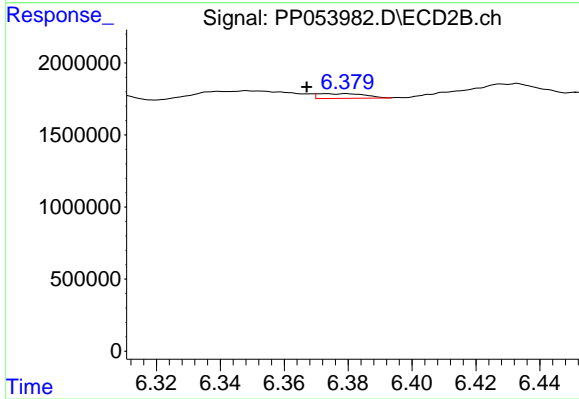
#31 AR-1260-1

R.T.: 6.164 min
 Delta R.T.: -0.014 min
 Response: 1834052
 Conc: 28.12 ng/ml



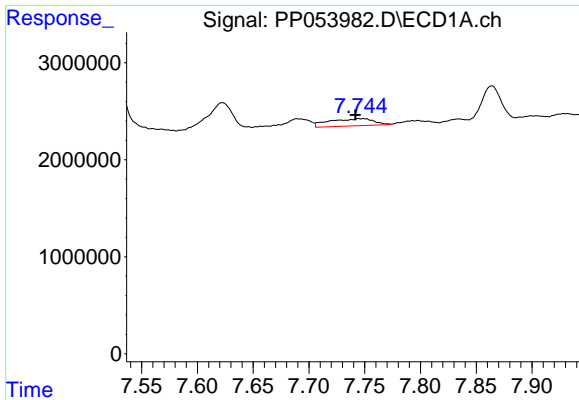
#32 AR-1260-2

R.T.: 7.398 min
 Delta R.T.: 0.017 min
 Response: 62752614
 Conc: 568.04 ng/ml



#32 AR-1260-2

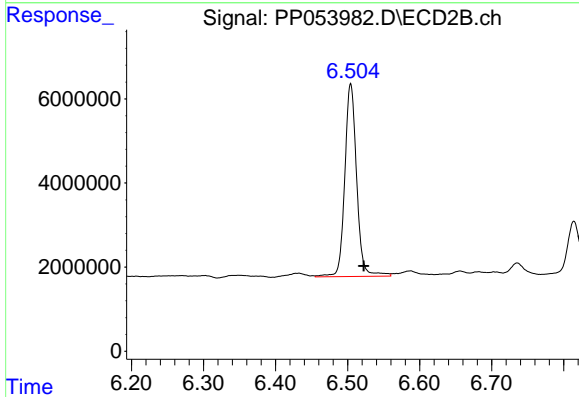
R.T.: 6.380 min
 Delta R.T.: 0.012 min
 Response: 342628
 Conc: 4.55 ng/ml



#33 AR-1260-3

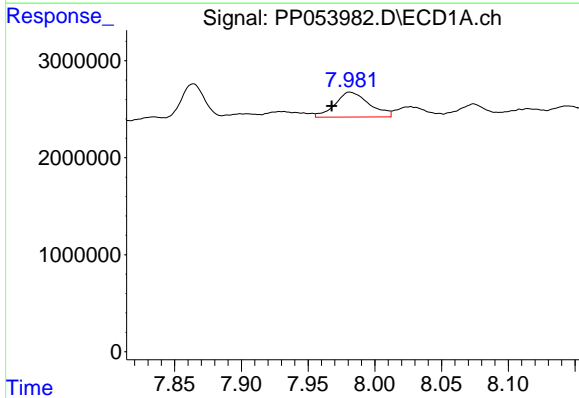
R.T.: 7.749 min
 Delta R.T.: 0.007 min
 Response: 2073485
 Conc: 27.42 ng/ml

Instrument :
 ECD_P
 ClientSampleId :



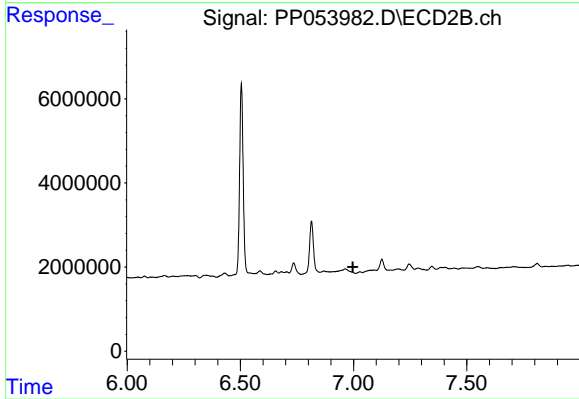
#33 AR-1260-3

R.T.: 6.504 min
 Delta R.T.: -0.018 min
 Response: 52432113
 Conc: 723.36 ng/ml



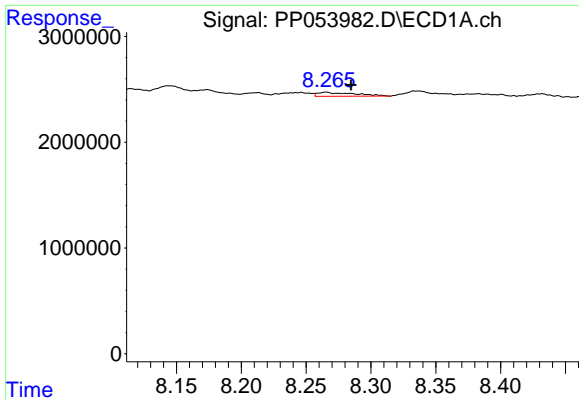
#34 AR-1260-4

R.T.: 7.981 min
 Delta R.T.: 0.014 min
 Response: 4584580
 Conc: 48.85 ng/ml



#34 AR-1260-4

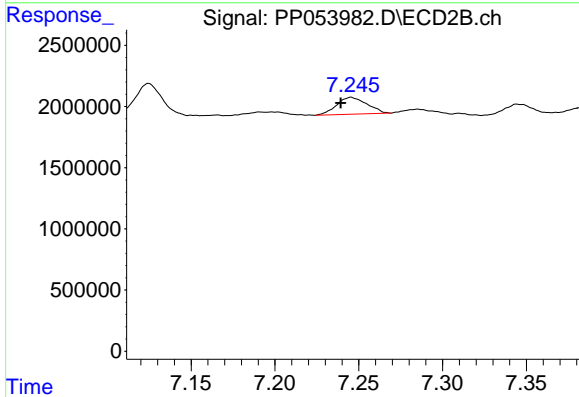
R.T.: 0.000 min
 Exp R.T. : 6.997 min
 Response: 0
 Conc: N.D.



#35 AR-1260-5

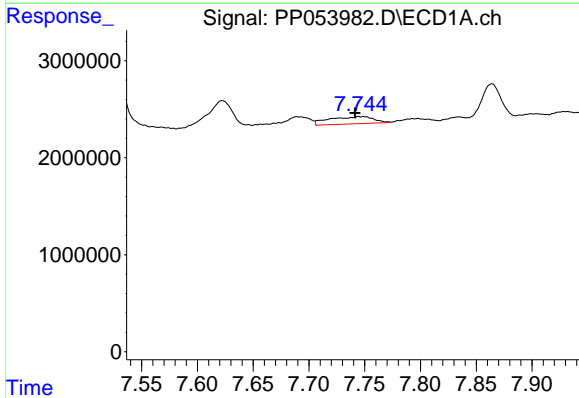
R.T.: 8.265 min
 Delta R.T.: -0.019 min
 Response: 758872
 Conc: 4.79 ng/ml

Instrument :
 ECD_P
 ClientSampleId :



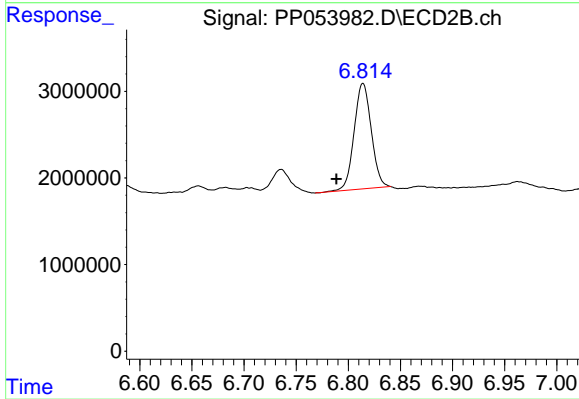
#35 AR-1260-5

R.T.: 7.245 min
 Delta R.T.: 0.006 min
 Response: 1733865
 Conc: 14.50 ng/ml



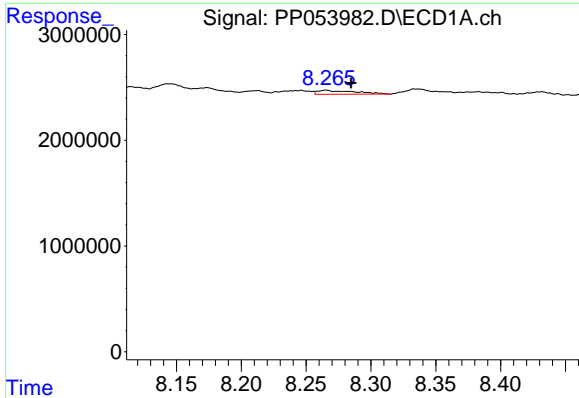
#36 AR-1262-1

R.T.: 7.749 min
 Delta R.T.: 0.007 min
 Response: 2073485
 Conc: 17.32 ng/ml



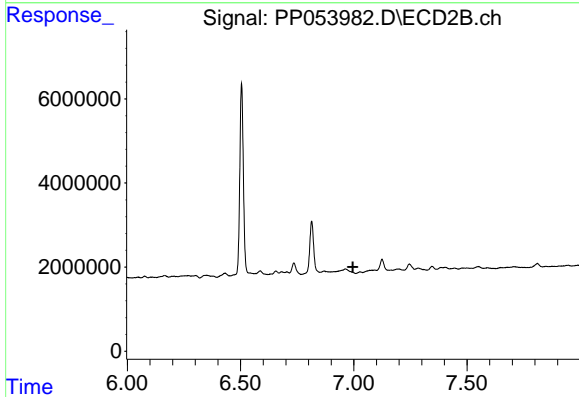
#36 AR-1262-1

R.T.: 6.814 min
 Delta R.T.: 0.025 min
 Response: 13910560
 Conc: 390.03 ng/ml

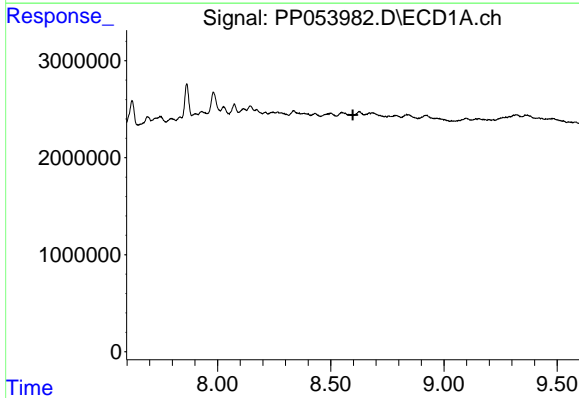


#37 AR-1262-2
 R.T.: 8.265 min
 Delta R.T.: -0.019 min
 Response: 758872
 Conc: 3.96 ng/ml

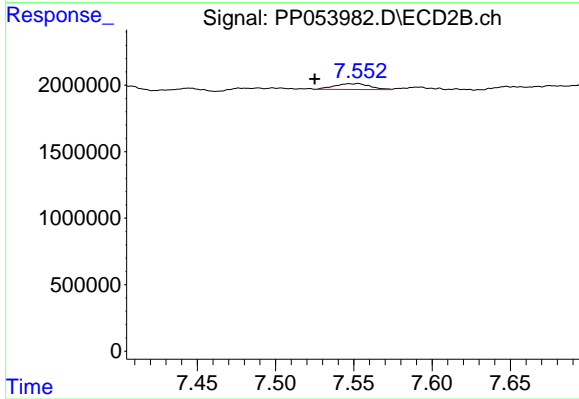
Instrument :
 ECD_P
 ClientSampleId :



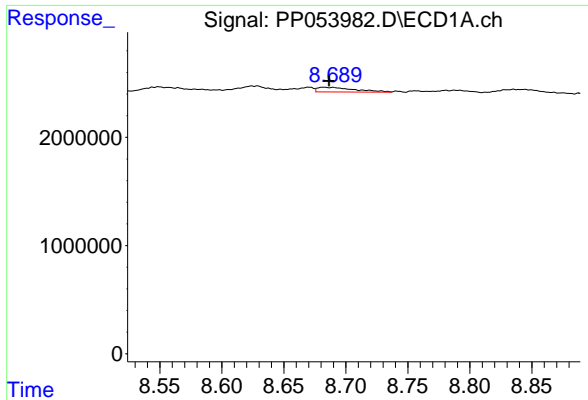
#37 AR-1262-2
 R.T.: 0.000 min
 Exp R.T. : 6.996 min
 Response: 0
 Conc: N.D.



#38 AR-1262-3
 R.T.: 0.000 min
 Exp R.T. : 8.598 min
 Response: 0
 Conc: N.D.



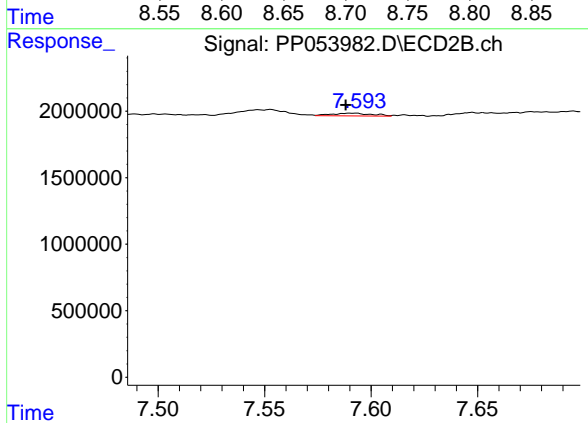
#38 AR-1262-3
 R.T.: 7.553 min
 Delta R.T.: 0.028 min
 Response: 691076
 Conc: 10.97 ng/ml



#39 AR-1262-4

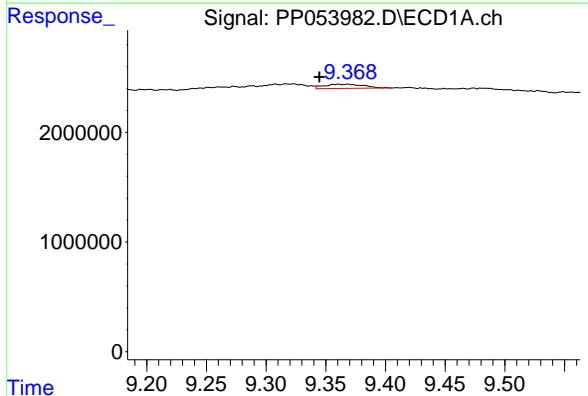
R.T.: 8.682 min
 Delta R.T.: -0.004 min
 Response: 897596
 Conc: 14.42 ng/ml

Instrument :
 ECD_P
 ClientSampleId :



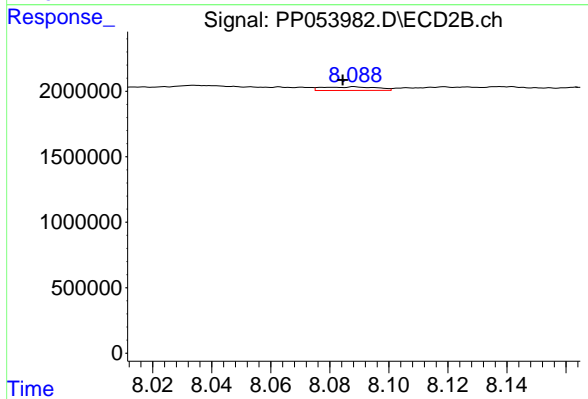
#39 AR-1262-4

R.T.: 7.591 min
 Delta R.T.: 0.003 min
 Response: 271341
 Conc: 2.37 ng/ml



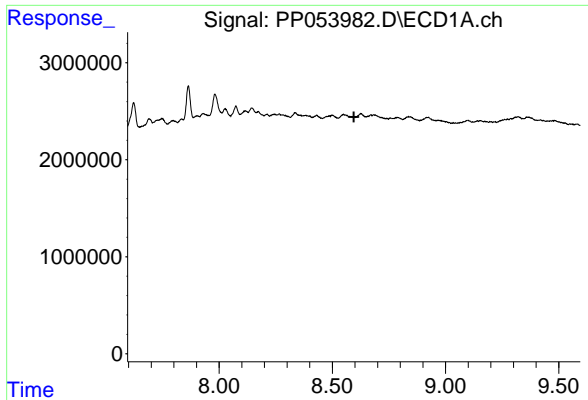
#40 AR-1262-5

R.T.: 9.361 min
 Delta R.T.: 0.016 min
 Response: 871368
 Conc: 12.33 ng/ml



#40 AR-1262-5

R.T.: 8.088 min
 Delta R.T.: 0.004 min
 Response: 350934
 Conc: 7.04 ng/ml

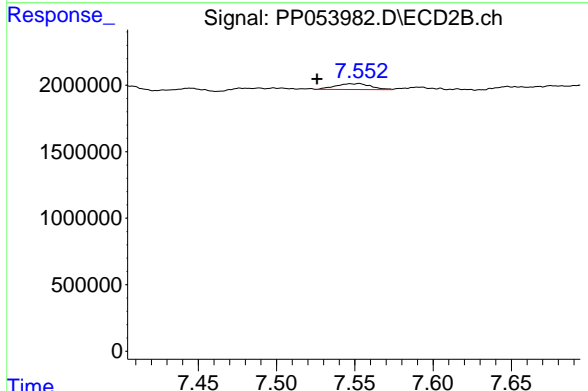


#41 AR-1268-1

R.T.: 0.000 min
 Exp R.T.: 8.595 min
 Response: 0
 Conc: N.D.

Instrument :
 ECD_P
 ClientSampleId :

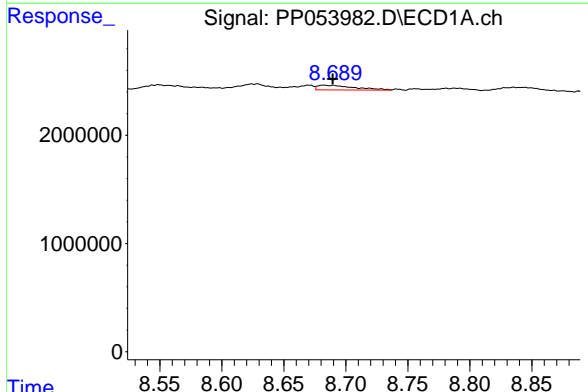
Time



#41 AR-1268-1

R.T.: 7.553 min
 Delta R.T.: 0.027 min
 Response: 691076
 Conc: 3.82 ng/ml

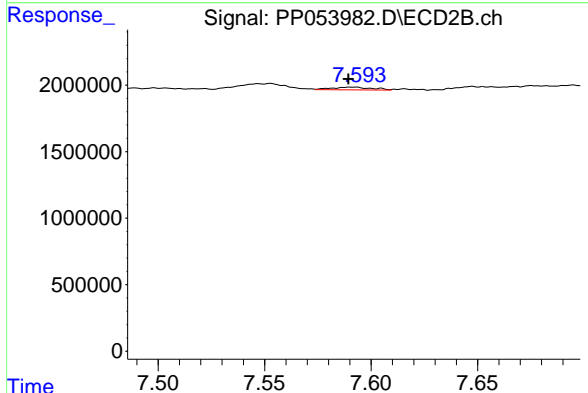
Time



#42 AR-1268-2

R.T.: 8.682 min
 Delta R.T.: -0.007 min
 Response: 897596
 Conc: 3.95 ng/ml

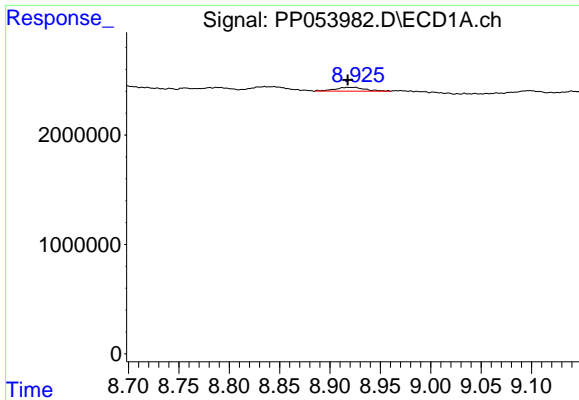
Time



#42 AR-1268-2

R.T.: 7.591 min
 Delta R.T.: 0.002 min
 Response: 271341
 Conc: 1.59 ng/ml

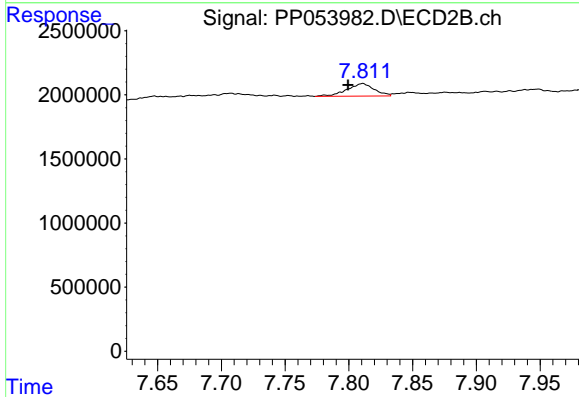
Time



#43 AR-1268-3

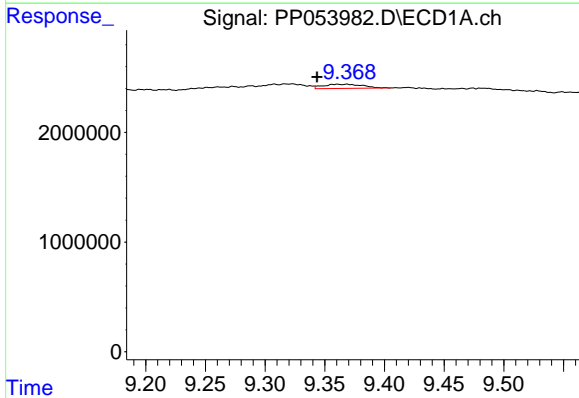
R.T.: 8.925 min
 Delta R.T.: 0.007 min
 Response: 699300
 Conc: 3.65 ng/ml

Instrument :
 ECD_P
 ClientSampleId :



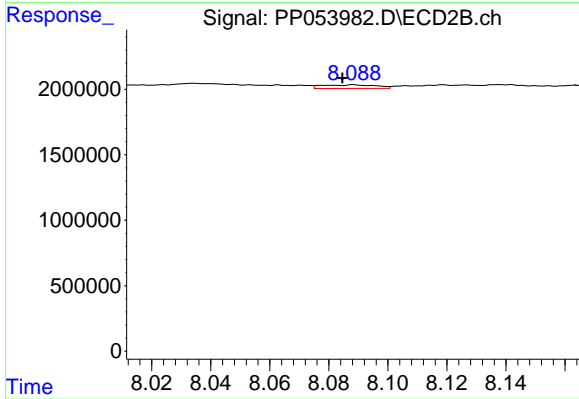
#43 AR-1268-3

R.T.: 7.811 min
 Delta R.T.: 0.011 min
 Response: 1460283
 Conc: 9.89 ng/ml



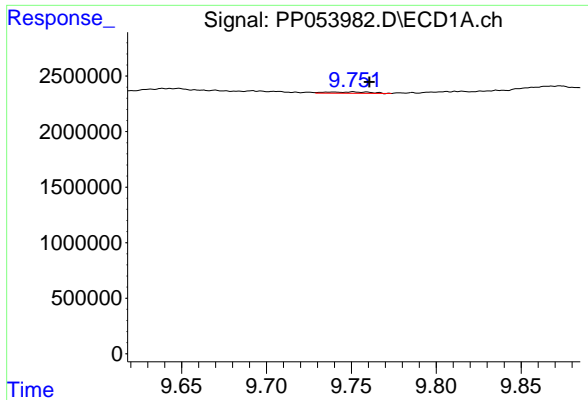
#44 AR-1268-4

R.T.: 9.361 min
 Delta R.T.: 0.017 min
 Response: 871368
 Conc: 11.32 ng/ml



#44 AR-1268-4

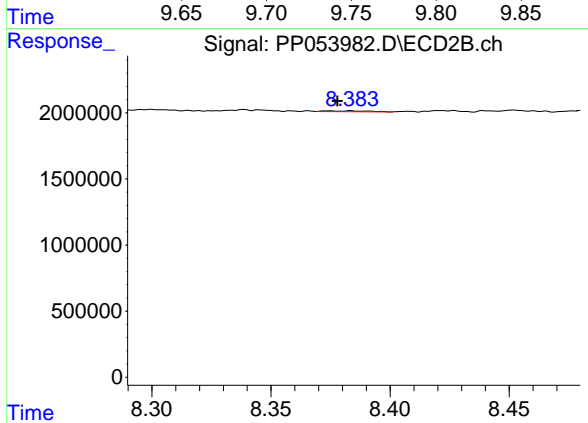
R.T.: 8.088 min
 Delta R.T.: 0.004 min
 Response: 350934
 Conc: 6.30 ng/ml



#45 AR-1268-5

R.T.: 9.751 min
 Delta R.T.: -0.010 min
 Response: 206852
 Conc: 0.35 ng/ml

Instrument :
 ECD_P
 ClientSampleId :



#45 AR-1268-5

R.T.: 8.384 min
 Delta R.T.: 0.006 min
 Response: 79249
 Conc: 0.17 ng/ml