

Data Path : Z:\pestpcbsrv\HPCHEM1\ECD_P\Data\PP122222\
 Data File : PP053947.D
 Signal(s) : Signal #1: ECD1A.ch Signal #2: ECD2B.ch
 Acq On : 22 Dec 2022 13:25
 Operator : YP\AJ
 Sample : PB149842BS
 Misc :
 ALS Vial : 8 Sample Multiplier: 1

Instrument :
 ECD_P
 ClientSampleId :
 PB149842BS

Integration File signal 1: autoint1.e
 Integration File signal 2: autoint2.e
 Quant Time: Dec 22 13:56:34 2022
 Quant Method : Z:\pestpcbsrv\HPCHEM1\ECD_P\methods\PP121322.M
 Quant Title : GC EXTRACTABLES
 QLast Update : Wed Dec 14 05:38:40 2022
 Response via : Initial Calibration
 Integrator: ChemStation

Volume Inj. : 2 µl
 Signal #1 Phase : ZB-MR1 Signal #2 Phase: ZB-MR2
 Signal #1 Info : 30Mx0.32mmx 0.50µ Signal #2 Info : 30M x 0.32mm x 0.25µm

Compound	RT#1	RT#2	Resp#1	Resp#2	ng/ml	ng/ml

System Monitoring Compounds						
1) SA Tetrachlo...	4.338	3.605	41766984	26456394	19.891	16.940
2) SA Decachlor...	10.100	8.637	35957295	29786991	21.179	21.326
Target Compounds						
3) L1 AR-1016-1	5.510	4.695	27549070	17356564	406.273	377.920
4) L1 AR-1016-2	5.534	4.714	39208285	23561410	393.616	376.032
5) L1 AR-1016-3	5.595	4.891	24926841	12746549	394.406	375.547
6) L1 AR-1016-4	5.694	4.933	20101248	11054809	405.656	370.985
7) L1 AR-1016-5	5.990	5.147	21112286	13559341	401.101	373.932
31) L7 AR-1260-1	7.122	6.186	38006382	26149981	393.551	400.895
32) L7 AR-1260-2	7.380	6.375	43638739	31148128	395.023	413.626
33) L7 AR-1260-3	7.740	6.528	29167007	29157524	385.758	402.260
34) L7 AR-1260-4	7.967	7.003	36250643	22087342	386.242	407.077
35) L7 AR-1260-5	8.284	7.245	61433612	49711658	387.422	415.701

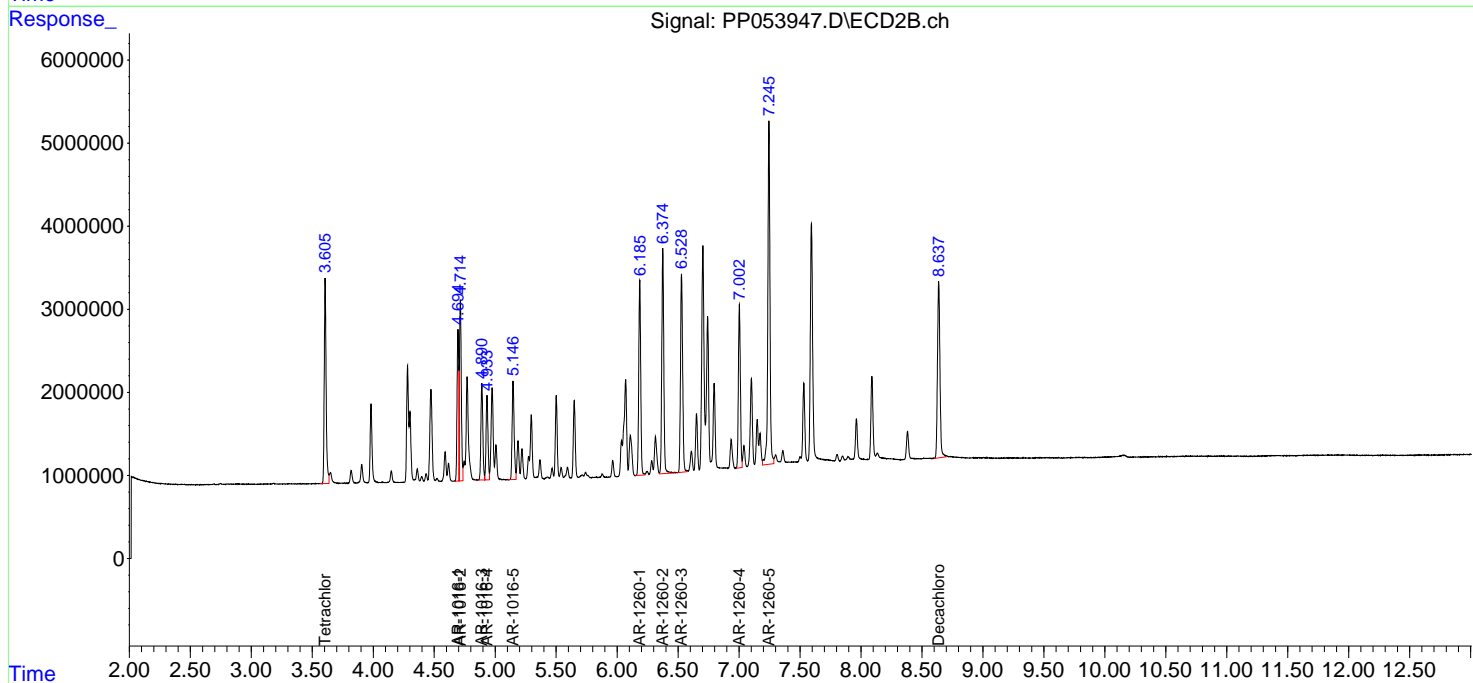
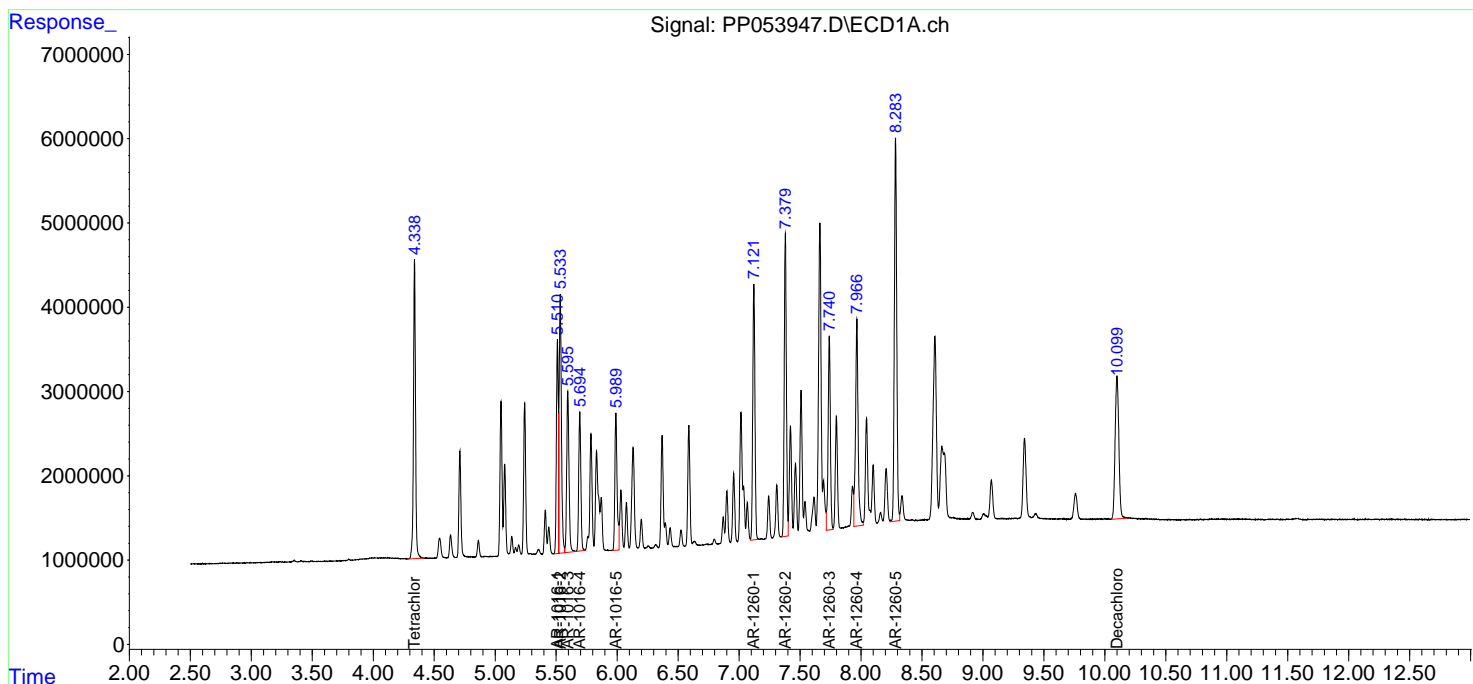
(f)=RT Delta > 1/2 Window (#)=Amounts differ by > 25% (m)=manual int.

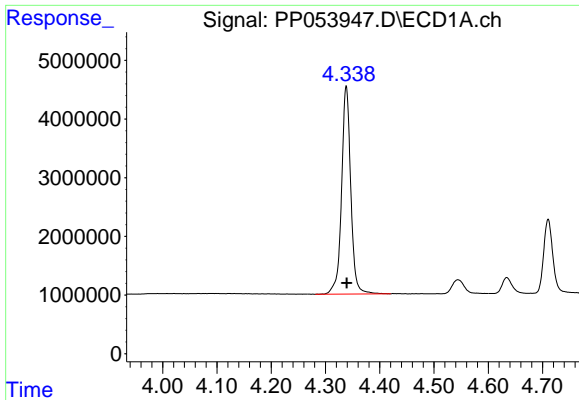
Data Path : Z:\pestpcbsrv\HPCHEM1\ECD_P\Data\PP122222\
 Data File : PP053947.D
 Signal(s) : Signal #1: ECD1A.ch Signal #2: ECD2B.ch
 Acq On : 22 Dec 2022 13:25
 Operator : YP\AJ
 Sample : PB149842BS
 Misc :
 ALS Vial : 8 Sample Multiplier: 1

Instrument :
 ECD_P
 ClientSampleId :
 PB149842BS

Integration File signal 1: autoint1.e
 Integration File signal 2: autoint2.e
 Quant Time: Dec 22 13:56:34 2022
 Quant Method : Z:\pestpcbsrv\HPCHEM1\ECD_P\methods\PP121322.M
 Quant Title : GC EXTRACTABLES
 QLast Update : Wed Dec 14 05:38:40 2022
 Response via : Initial Calibration
 Integrator: ChemStation

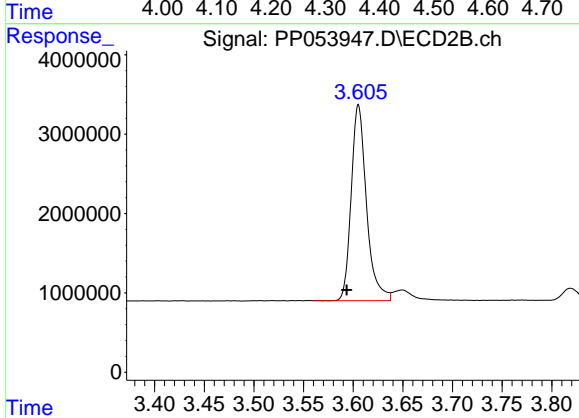
Volume Inj. : 2 µl
 Signal #1 Phase : ZB-MR1 Signal #2 Phase: ZB-MR2
 Signal #1 Info : 30Mx0.32mmx 0.50µ Signal #2 Info : 30M x 0.32mm x 0.25µm



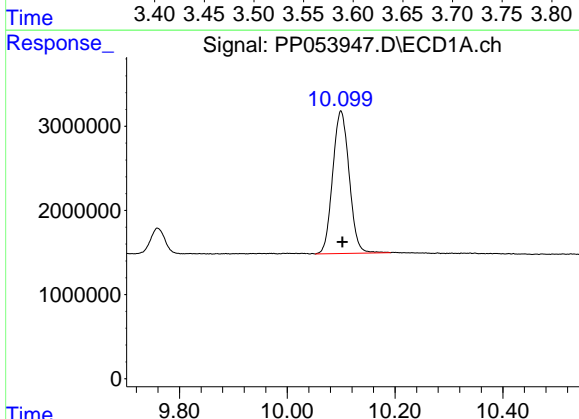


#1 Tetrachloro-m-xylene
 R.T.: 4.338 min
 Delta R.T.: 0.000 min
 Response: 41766984
 Conc: 19.89 ng/ml

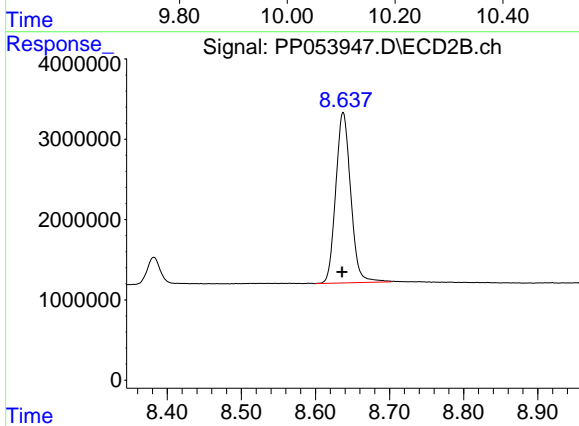
Instrument :
 ECD_P
 ClientSampleId :
 PB149842BS



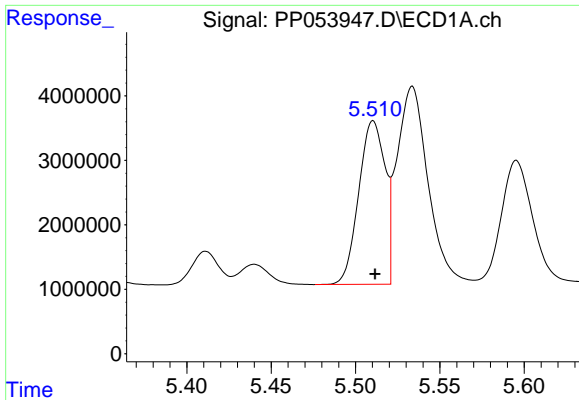
#1 Tetrachloro-m-xylene
 R.T.: 3.605 min
 Delta R.T.: 0.012 min
 Response: 26456394
 Conc: 16.94 ng/ml



#2 Decachlorobiphenyl
 R.T.: 10.100 min
 Delta R.T.: -0.003 min
 Response: 35957295
 Conc: 21.18 ng/ml



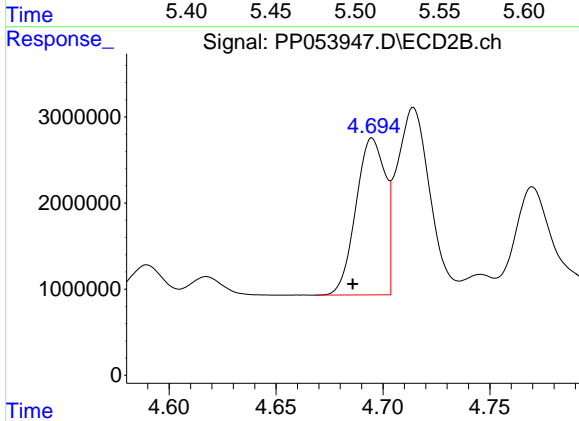
#2 Decachlorobiphenyl
 R.T.: 8.637 min
 Delta R.T.: 0.002 min
 Response: 29786991
 Conc: 21.33 ng/ml



#3 AR-1016-1

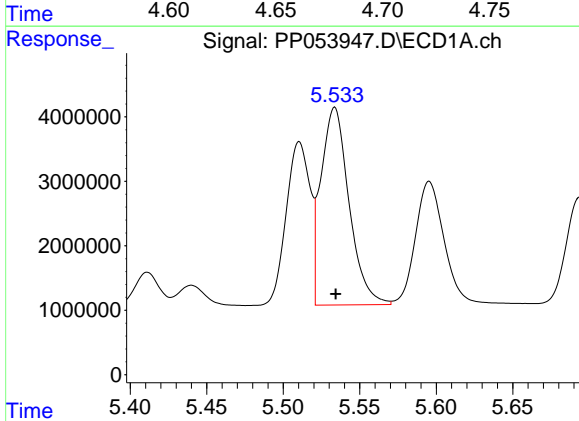
R.T.: 5.510 min
Delta R.T.: -0.001 min
Response: 27549070
Conc: 406.27 ng/ml

Instrument :
ECD_P
ClientSampleId :
PB149842BS



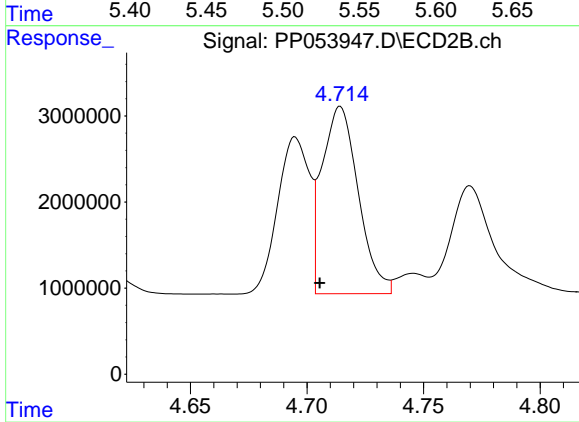
#3 AR-1016-1

R.T.: 4.695 min
Delta R.T.: 0.009 min
Response: 17356564
Conc: 377.92 ng/ml



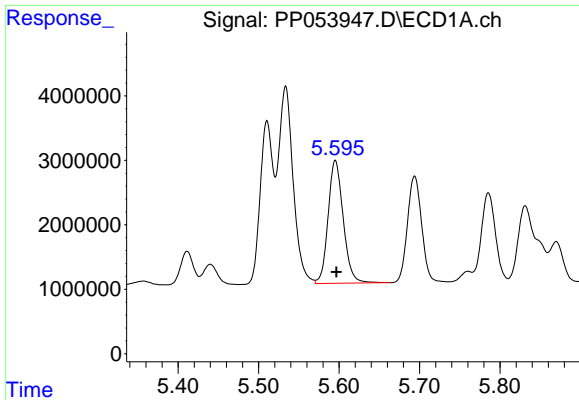
#4 AR-1016-2

R.T.: 5.534 min
Delta R.T.: 0.000 min
Response: 39208285
Conc: 393.62 ng/ml



#4 AR-1016-2

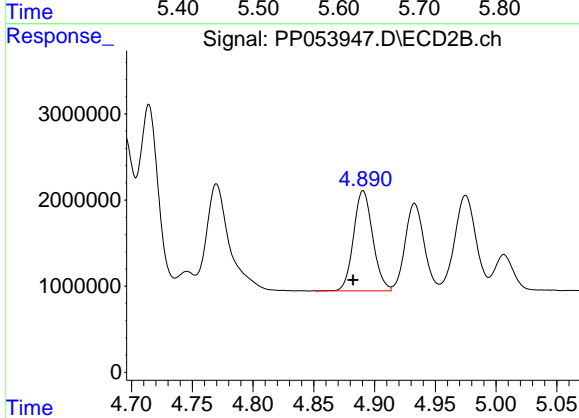
R.T.: 4.714 min
Delta R.T.: 0.009 min
Response: 23561410
Conc: 376.03 ng/ml



#5 AR-1016-3

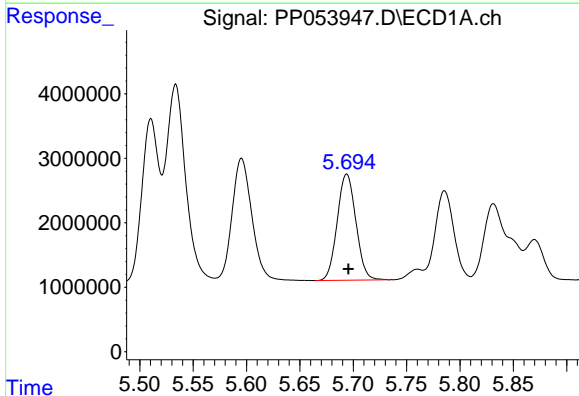
R.T.: 5.595 min
 Delta R.T.: -0.001 min
 Response: 24926841
 Conc: 394.41 ng/ml

Instrument :
 ECD_P
 ClientSampleId :
 PB149842BS



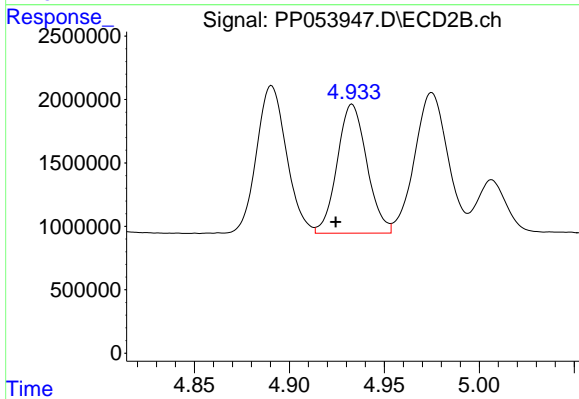
#5 AR-1016-3

R.T.: 4.891 min
 Delta R.T.: 0.008 min
 Response: 12746549
 Conc: 375.55 ng/ml



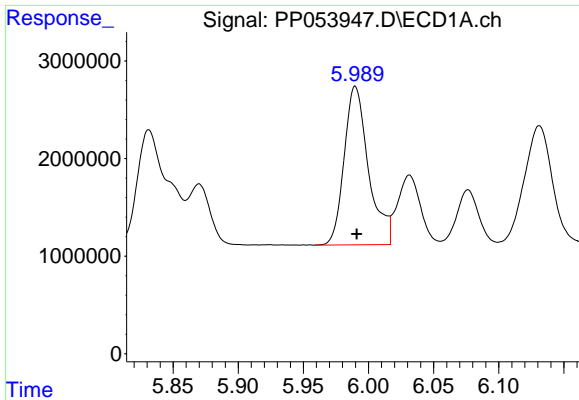
#6 AR-1016-4

R.T.: 5.694 min
 Delta R.T.: -0.001 min
 Response: 20101248
 Conc: 405.66 ng/ml



#6 AR-1016-4

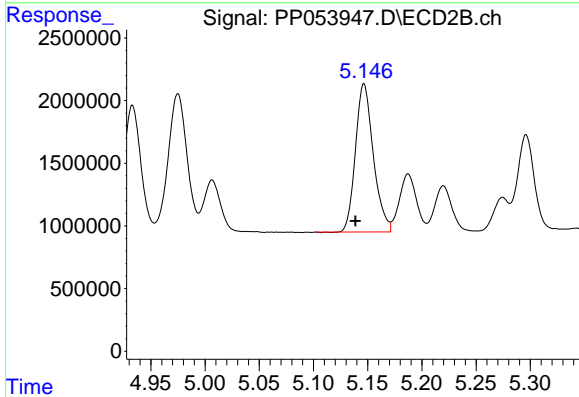
R.T.: 4.933 min
 Delta R.T.: 0.009 min
 Response: 11054809
 Conc: 370.98 ng/ml



#7 AR-1016-5

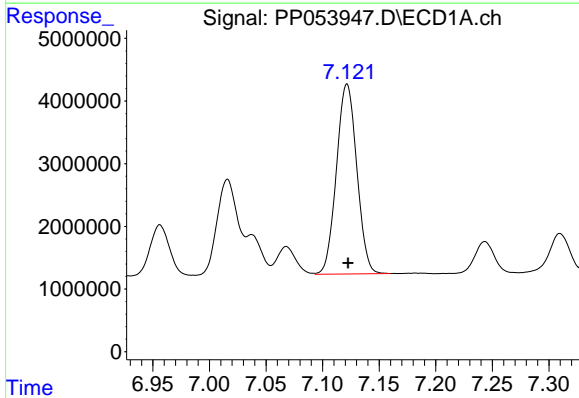
R.T.: 5.990 min
 Delta R.T.: -0.001 min
 Response: 21112286
 Conc: 401.10 ng/ml

Instrument :
 ECD_P
 ClientSampleId :
 PB149842BS



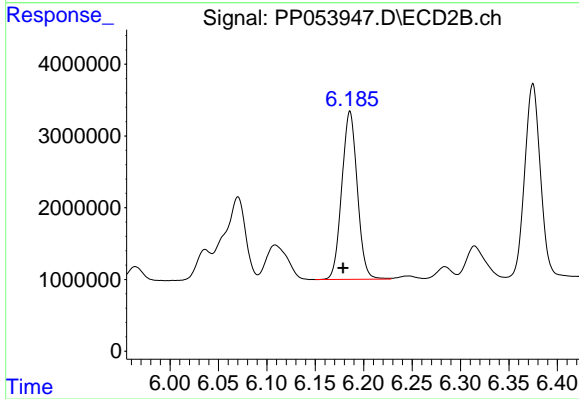
#7 AR-1016-5

R.T.: 5.147 min
 Delta R.T.: 0.008 min
 Response: 13559341
 Conc: 373.93 ng/ml



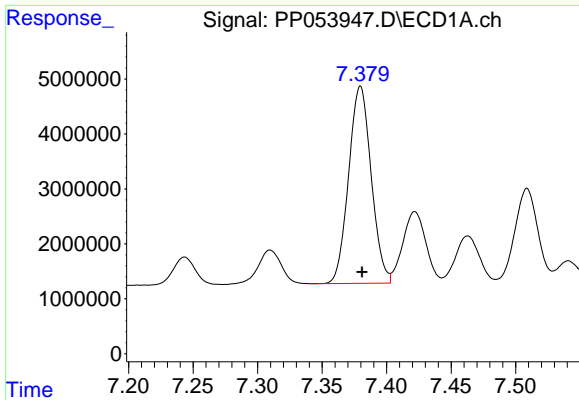
#31 AR-1260-1

R.T.: 7.122 min
 Delta R.T.: -0.001 min
 Response: 38006382
 Conc: 393.55 ng/ml



#31 AR-1260-1

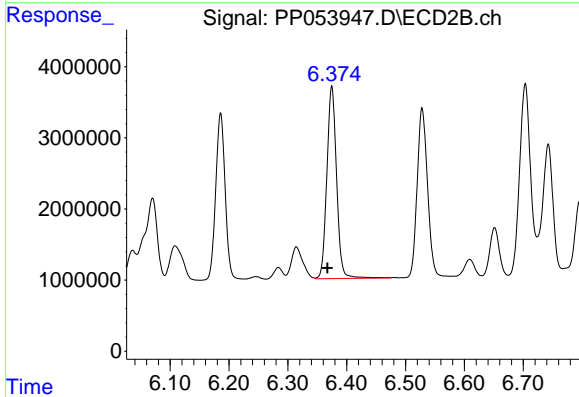
R.T.: 6.186 min
 Delta R.T.: 0.007 min
 Response: 26149981
 Conc: 400.89 ng/ml



#32 AR-1260-2

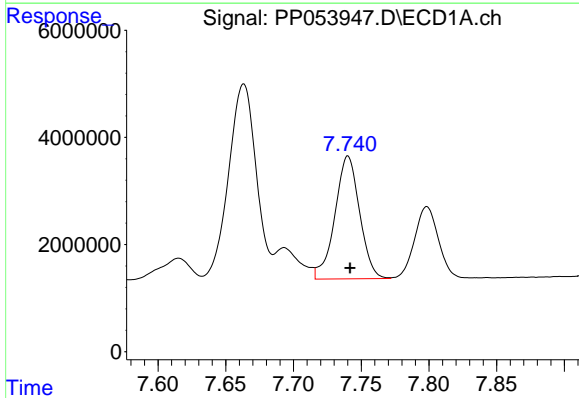
R.T.: 7.380 min
 Delta R.T.: -0.001 min
 Response: 43638739
 Conc: 395.02 ng/ml

Instrument :
 ECD_P
 ClientSampleId :
 PB149842BS



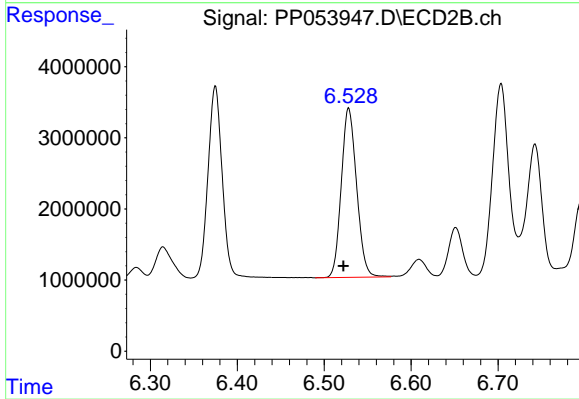
#32 AR-1260-2

R.T.: 6.375 min
 Delta R.T.: 0.008 min
 Response: 31148128
 Conc: 413.63 ng/ml



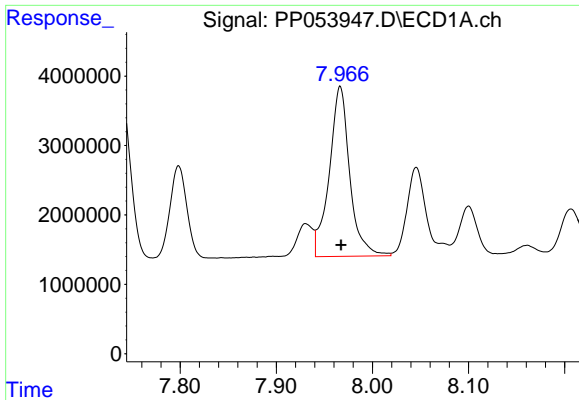
#33 AR-1260-3

R.T.: 7.740 min
 Delta R.T.: -0.002 min
 Response: 29167007
 Conc: 385.76 ng/ml



#33 AR-1260-3

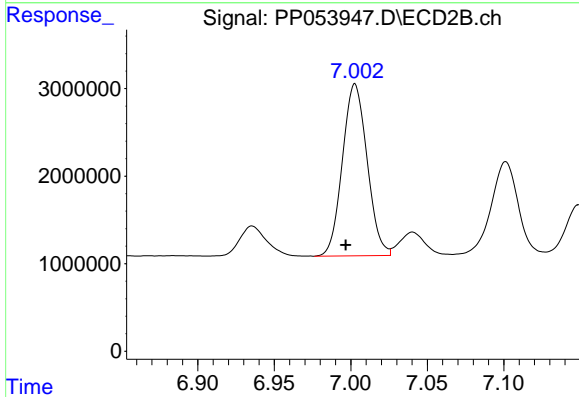
R.T.: 6.528 min
 Delta R.T.: 0.006 min
 Response: 29157524
 Conc: 402.26 ng/ml



#34 AR-1260-4

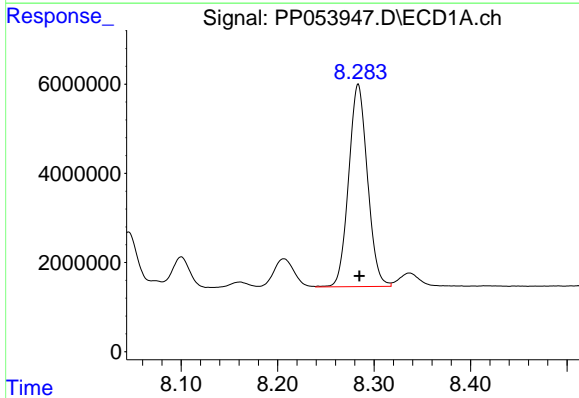
R.T.: 7.967 min
 Delta R.T.: -0.001 min
 Response: 36250643
 Conc: 386.24 ng/ml

Instrument :
 ECD_P
 ClientSampleId :
 PB149842BS



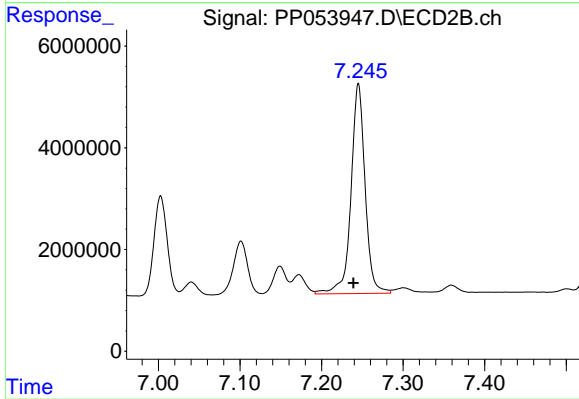
#34 AR-1260-4

R.T.: 7.003 min
 Delta R.T.: 0.006 min
 Response: 22087342
 Conc: 407.08 ng/ml



#35 AR-1260-5

R.T.: 8.284 min
 Delta R.T.: -0.001 min
 Response: 61433612
 Conc: 387.42 ng/ml



#35 AR-1260-5

R.T.: 7.245 min
 Delta R.T.: 0.006 min
 Response: 49711658
 Conc: 415.70 ng/ml