

Data Path : Z:\pestpcbsrv\HPCHEM1\ECD_P\Data\PP122222\
 Data File : PP053968.D
 Signal(s) : Signal #1: ECD1A.ch Signal #2: ECD2B.ch
 Acq On : 22 Dec 2022 19:29
 Operator : YP\AJ
 Sample : N6152-01
 Misc :
 ALS Vial : 24 Sample Multiplier: 1

Instrument :
 ECD_P
ClientSampleId :
 GROUND-WATER

Integration File signal 1: autoint1.e
 Integration File signal 2: autoint2.e
 Quant Time: Dec 22 20:57:58 2022
 Quant Method : Z:\pestpcbsrv\HPCHEM1\ECD_P\methods\PP121322.M
 Quant Title : GC EXTRACTABLES
 QLast Update : Wed Dec 14 05:38:40 2022
 Response via : Initial Calibration
 Integrator: ChemStation

Volume Inj. : 2 µl
 Signal #1 Phase : ZB-MR1 Signal #2 Phase: ZB-MR2
 Signal #1 Info : 30Mx0.32mmx 0.50µ Signal #2 Info : 30M x 0.32mm x 0.25µm

Compound	RT#1	RT#2	Resp#1	Resp#2	ng/ml	ng/ml

System Monitoring Compounds						
1) SA Tetrachlo...	4.340	3.591	45045232	29361264	21.453	18.800
2) SA Decachlor...	10.102	8.623	23581153	19750651	13.889	14.140

Target Compounds

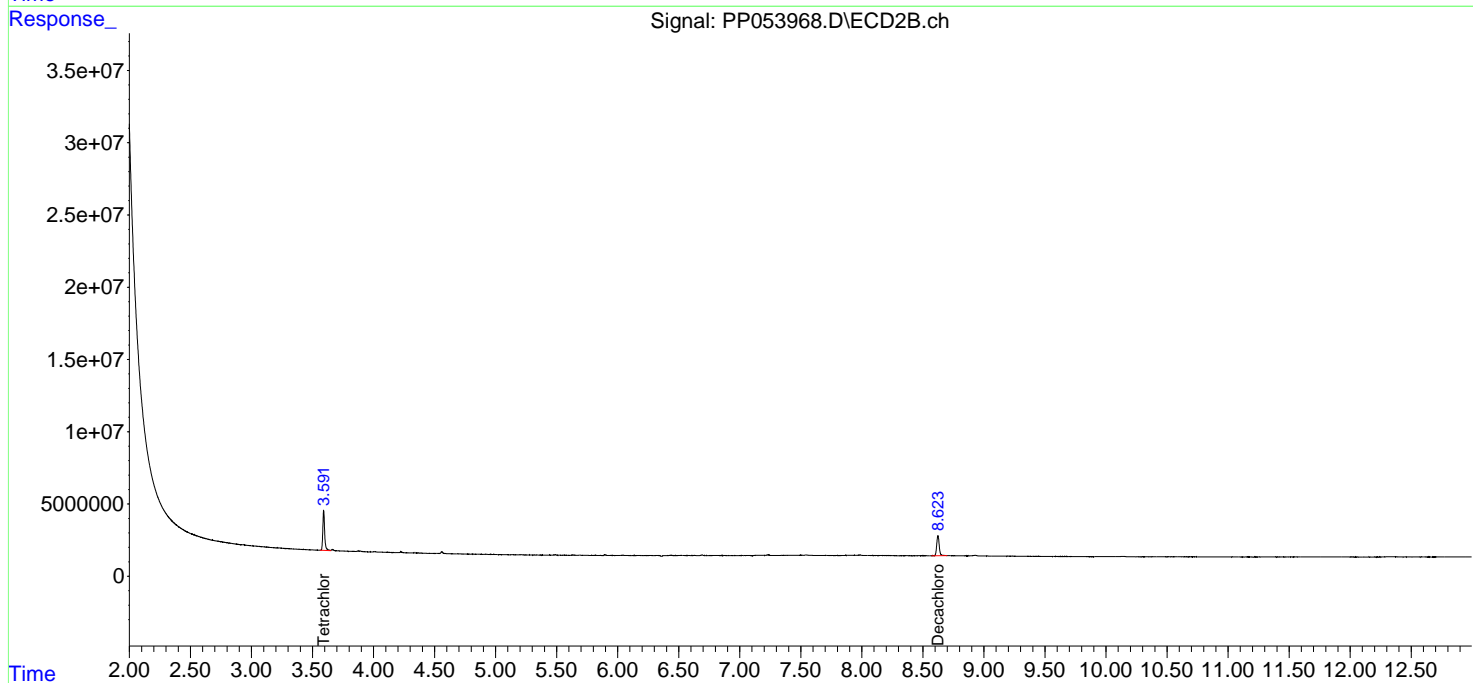
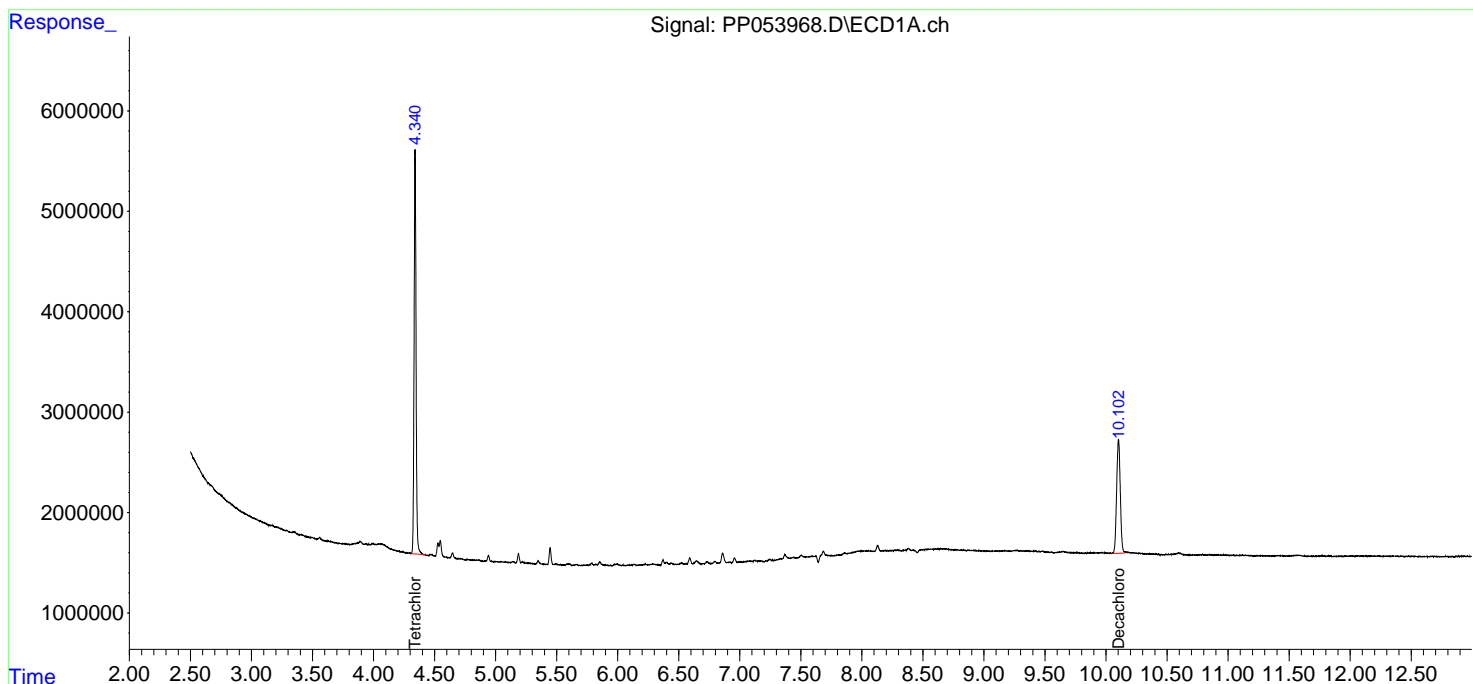
 (f)=RT Delta > 1/2 Window (#)=Amounts differ by > 25% (m)=manual int.

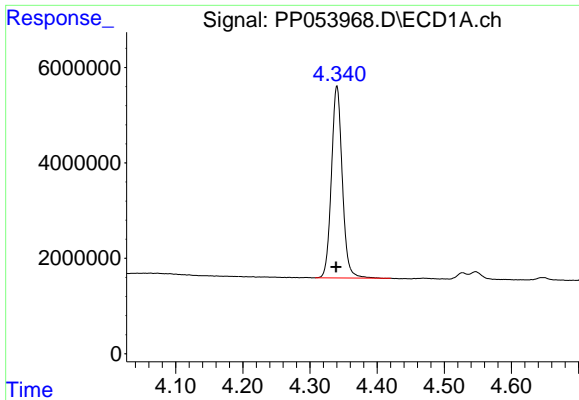
Data Path : Z:\pestpcbsrv\HPCHEM1\ECD_P\Data\PP122222\
 Data File : PP053968.D
 Signal(s) : Signal #1: ECD1A.ch Signal #2: ECD2B.ch
 Acq On : 22 Dec 2022 19:29
 Operator : YP\AJ
 Sample : N6152-01
 Misc :
 ALS Vial : 24 Sample Multiplier: 1

Instrument :
 ECD_P
 ClientSampleId :
 GROUND-WATER

Integration File signal 1: autoint1.e
 Integration File signal 2: autoint2.e
 Quant Time: Dec 22 20:57:58 2022
 Quant Method : Z:\pestpcbsrv\HPCHEM1\ECD_P\methods\PP121322.M
 Quant Title : GC EXTRACTABLES
 QLast Update : Wed Dec 14 05:38:40 2022
 Response via : Initial Calibration
 Integrator: ChemStation

Volume Inj. : 2 µl
 Signal #1 Phase : ZB-MR1 Signal #2 Phase: ZB-MR2
 Signal #1 Info : 30Mx0.32mmx 0.50µm Signal #2 Info : 30M x 0.32mm x 0.25µm

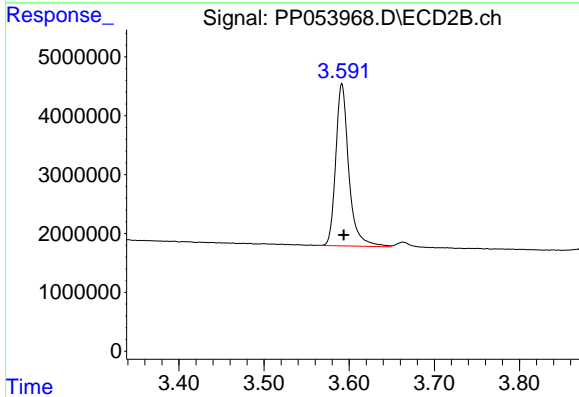




#1 Tetrachloro-m-xylene

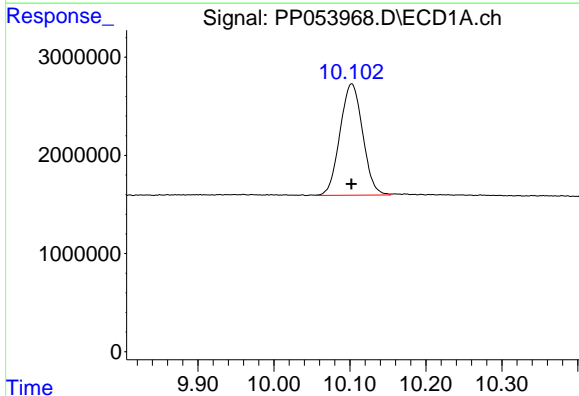
R.T.: 4.340 min
 Delta R.T.: 0.001 min
 Response: 45045232
 Conc: 21.45 ng/ml

Instrument :
 ECD_P
 ClientSampleId :
 GROUND-WATER



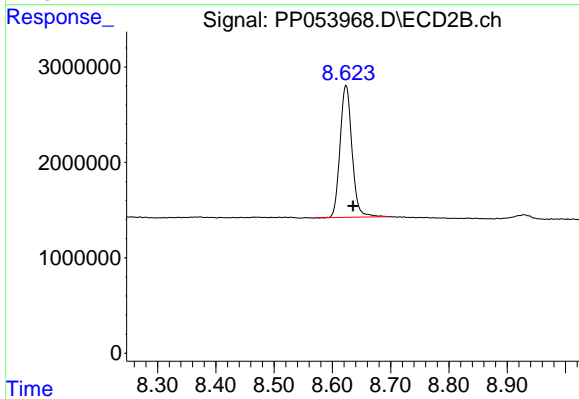
#1 Tetrachloro-m-xylene

R.T.: 3.591 min
 Delta R.T.: -0.002 min
 Response: 29361264
 Conc: 18.80 ng/ml



#2 Decachlorobiphenyl

R.T.: 10.102 min
 Delta R.T.: 0.000 min
 Response: 23581153
 Conc: 13.89 ng/ml



#2 Decachlorobiphenyl

R.T.: 8.623 min
 Delta R.T.: -0.012 min
 Response: 19750651
 Conc: 14.14 ng/ml