

Data Path : Z:\pestpcbsrv\HPCHEM1\ECD_P\Data\PP122320\
 Data File : PP032375.D
 Signal(s) : Signal #1: ECD1A.CH Signal #2: ECD2B.CH
 Acq On : 23 Dec 2020 16:37
 Operator : DD\AJ
 Sample : AR1248ICC250
 Misc :
 ALS Vial : 18 Sample Multiplier: 1

Instrument :
 ECD_P
 ClientSampleId :
 AR1248ICC250

Integration File signal 1: autoint1.e
 Integration File signal 2: autoint2.e
 Quant Time: Dec 24 03:48:29 2020
 Quant Method : Z:\pestpcbsrv\HPCHEM1\ECD_P\methods\PP122320.M
 Quant Title : GC EXTRACTABLES
 QLast Update : Thu Dec 24 03:40:23 2020
 Response via : Initial Calibration
 Integrator: ChemStation 6890 Scale Mode: Small noise peaks clipped

Volume Inj. : 2 µl
 Signal #1 Phase : ZB-MR1 Signal #2 Phase: ZB-MR2
 Signal #1 Info : 30Mx0.32mmx 0.50µ Signal #2 Info : 30M x 0.32mm x 0.25µm

| Compound | RT#1 | RT#2 | Resp#1 | Resp#2 | ng/ml | ng/ml |
|-----------------------------|--------|-------|---------|---------|---------|---------|
| ----- | | | | | | |
| System Monitoring Compounds | | | | | | |
| 1) SA Tetrachlo... | 4.771 | 4.042 | 1205998 | 1152655 | 25.189 | 25.119 |
| 2) SA Decachlor... | 10.624 | 9.327 | 819927 | 865822 | 25.313 | 25.163 |
| Target Compounds | | | | | | |
| 21) L5 AR-1248-1 | 6.074 | 5.291 | 187413 | 185542 | 256.010 | 252.890 |
| 22) L5 AR-1248-2 | 6.366 | 5.554 | 261482 | 274443 | 258.531 | 259.171 |
| 23) L5 AR-1248-3 | 6.581 | 5.598 | 321879 | 293328 | 255.498 | 260.671 |
| 24) L5 AR-1248-4 | 7.007 | 5.782 | 320359 | 349510 | 251.665 | 260.221 |
| 25) L5 AR-1248-5 | 7.046 | 6.204 | 335722 | 293055 | 247.559 | 249.089 |
| ----- | | | | | | |

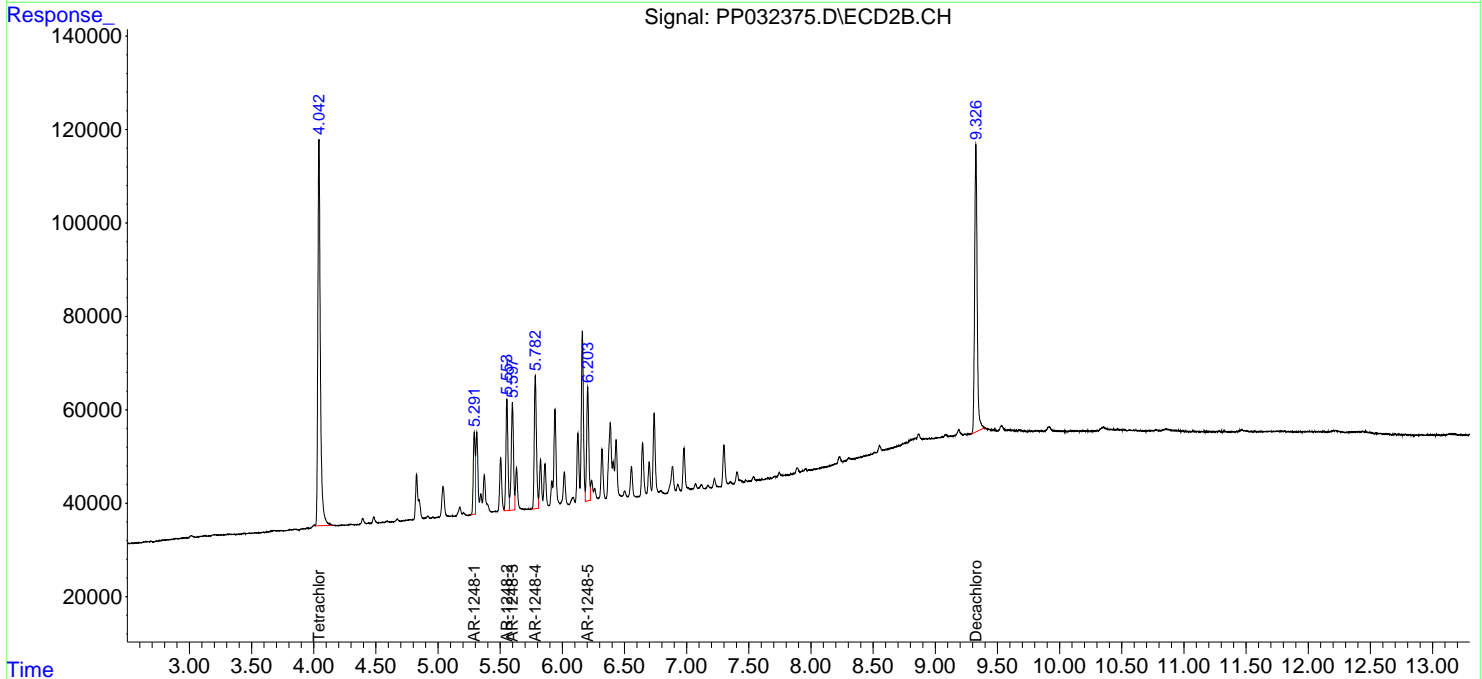
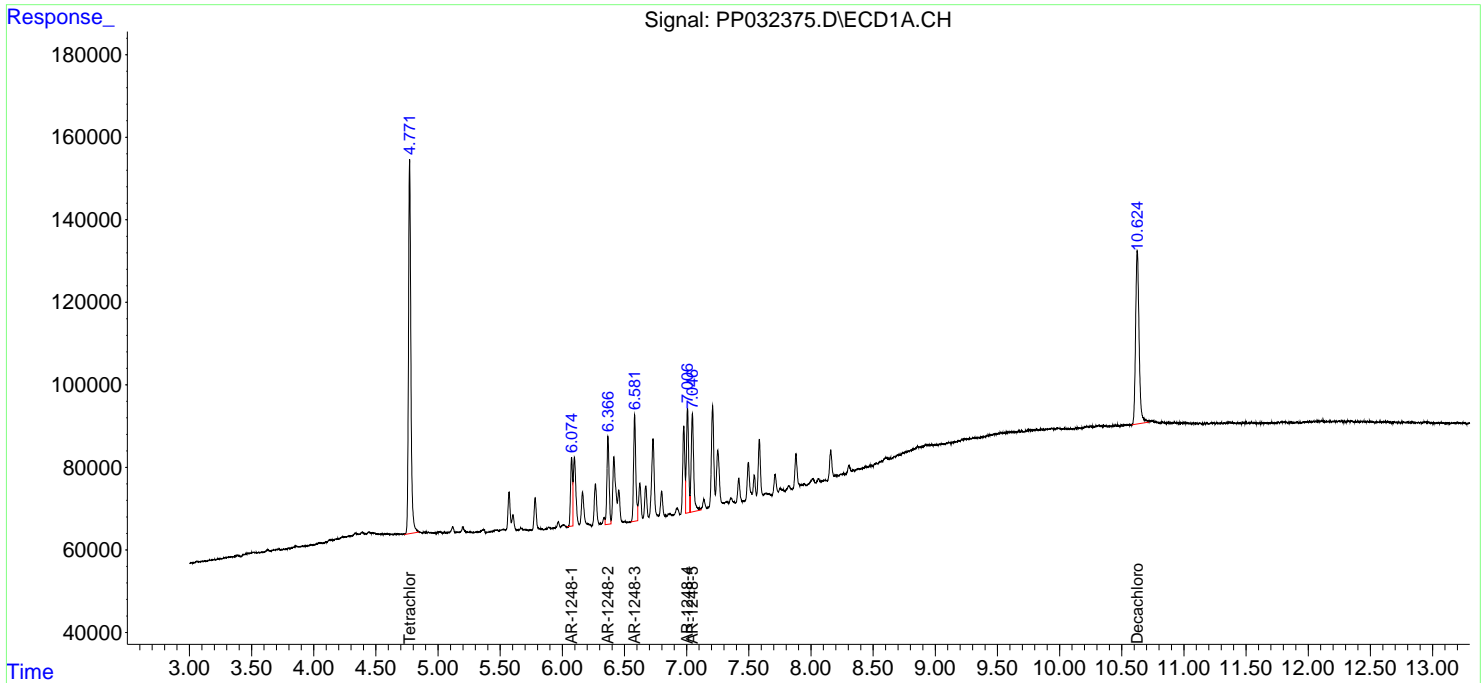
(f)=RT Delta > 1/2 Window (#)=Amounts differ by > 25% (m)=manual int.

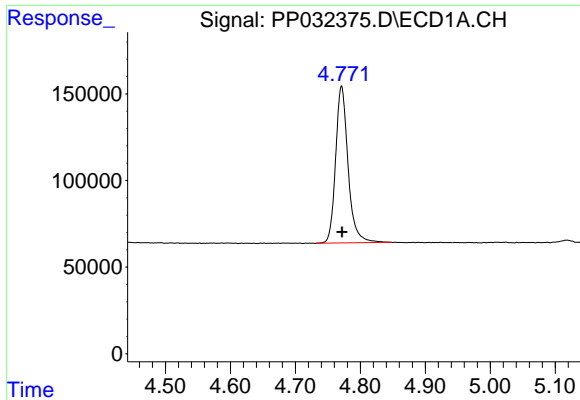
Data Path : Z:\pestpcbsrv\HPCHEM1\ECD_P\Data\PP122320\
 Data File : PP032375.D
 Signal(s) : Signal #1: ECD1A.CH Signal #2: ECD2B.CH
 Acq On : 23 Dec 2020 16:37
 Operator : DD\AJ
 Sample : AR1248ICC250
 Misc :
 ALS Vial : 18 Sample Multiplier: 1

Instrument :
 ECD_P
 ClientSampleID :
 AR1248ICC250

Integration File signal 1: autoint1.e
 Integration File signal 2: autoint2.e
 Quant Time: Dec 24 03:48:29 2020
 Quant Method : Z:\pestpcbsrv\HPCHEM1\ECD_P\methods\PP122320.M
 Quant Title : GC EXTRACTABLES
 QLast Update : Thu Dec 24 03:40:23 2020
 Response via : Initial Calibration
 Integrator: ChemStation 6890 Scale Mode: Small noise peaks clipped

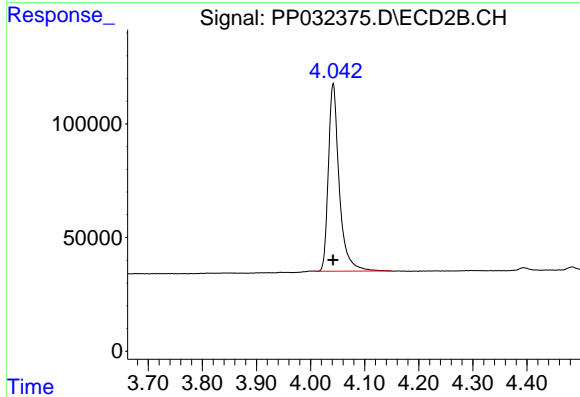
Volume Inj. : 2 µl
 Signal #1 Phase : ZB-MR1 Signal #2 Phase: ZB-MR2
 Signal #1 Info : 30Mx0.32mmx 0.50µ Signal #2 Info : 30M x 0.32mm x 0.25µm



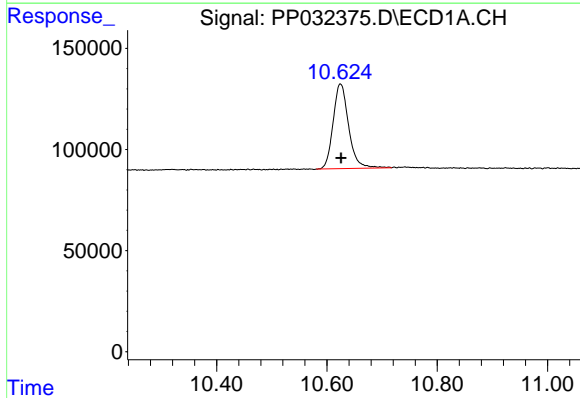


#1 Tetrachloro-m-xylene
 R.T.: 4.771 min
 Delta R.T.: 0.000 min
 Response: 1205998
 Conc: 25.19 ng/ml

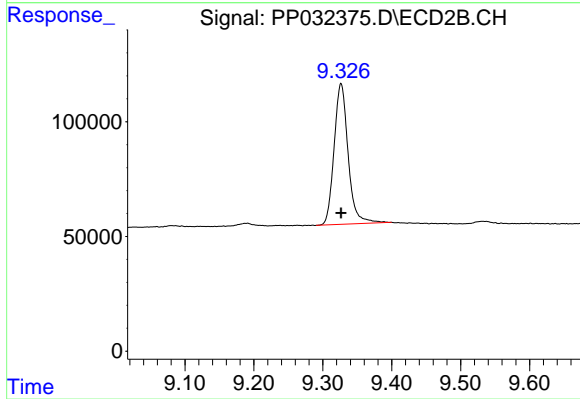
Instrument :
 ECD_P
 ClientSampleId :
 AR1248ICC250



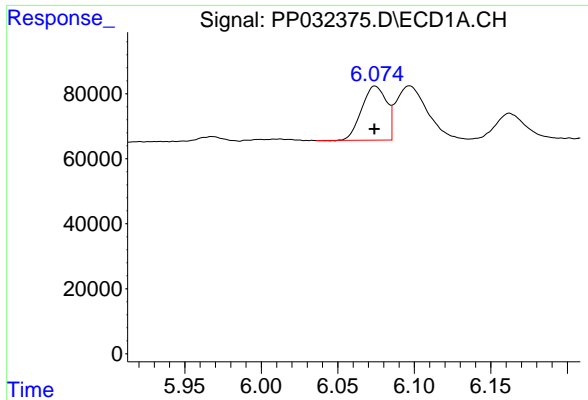
#1 Tetrachloro-m-xylene
 R.T.: 4.042 min
 Delta R.T.: 0.000 min
 Response: 1152655
 Conc: 25.12 ng/ml



#2 Decachlorobiphenyl
 R.T.: 10.624 min
 Delta R.T.: -0.001 min
 Response: 819927
 Conc: 25.31 ng/ml

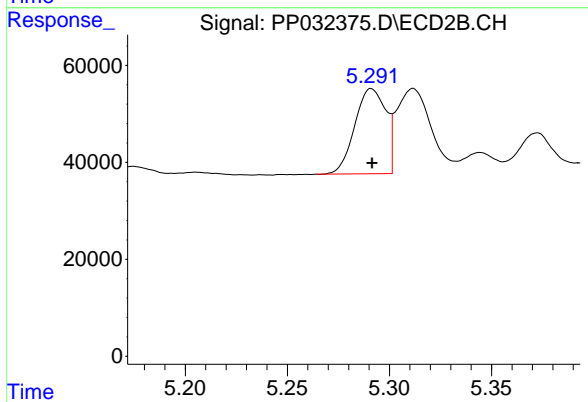


#2 Decachlorobiphenyl
 R.T.: 9.327 min
 Delta R.T.: 0.000 min
 Response: 865822
 Conc: 25.16 ng/ml

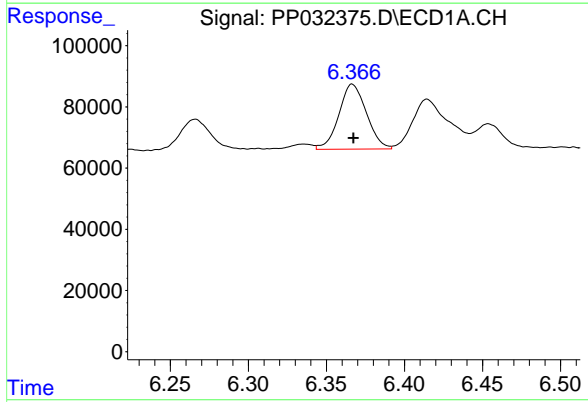


#21 AR-1248-1
 R.T.: 6.074 min
 Delta R.T.: 0.000 min
 Response: 187413
 Conc: 256.01 ng/ml

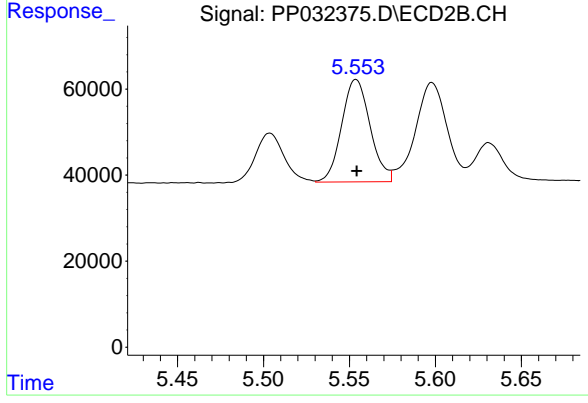
Instrument :
 ECD_P
ClientSampleId :
 AR1248ICC250



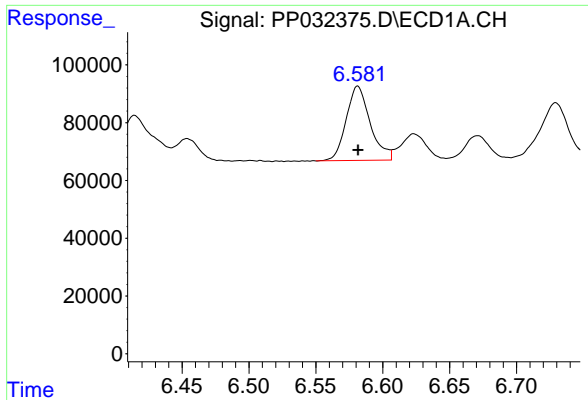
#21 AR-1248-1
 R.T.: 5.291 min
 Delta R.T.: 0.000 min
 Response: 185542
 Conc: 252.89 ng/ml



#22 AR-1248-2
 R.T.: 6.366 min
 Delta R.T.: 0.000 min
 Response: 261482
 Conc: 258.53 ng/ml



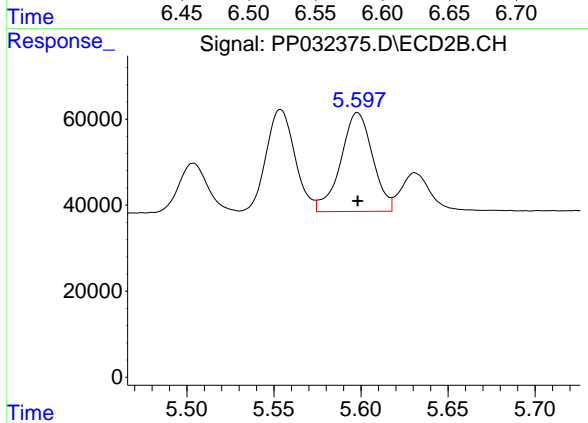
#22 AR-1248-2
 R.T.: 5.554 min
 Delta R.T.: 0.000 min
 Response: 274443
 Conc: 259.17 ng/ml



#23 AR-1248-3

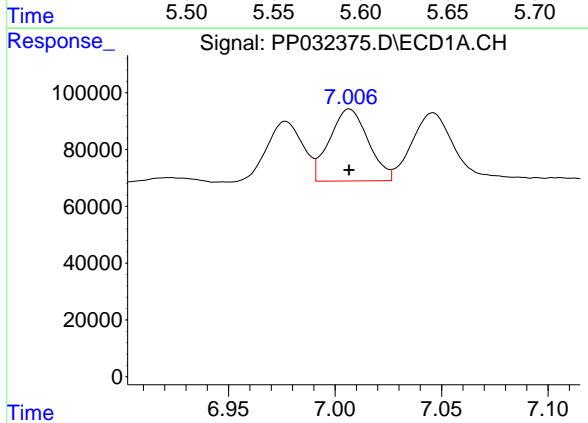
R.T.: 6.581 min
 Delta R.T.: 0.000 min
 Response: 321879
 Conc: 255.50 ng/ml

Instrument :
 ECD_P
ClientSampleId :
 AR1248ICC250



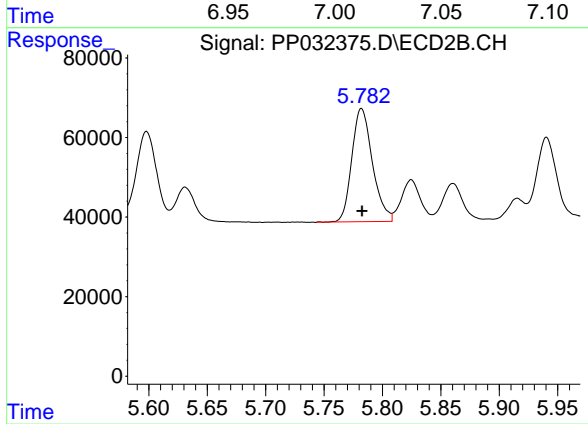
#23 AR-1248-3

R.T.: 5.598 min
 Delta R.T.: 0.000 min
 Response: 293328
 Conc: 260.67 ng/ml



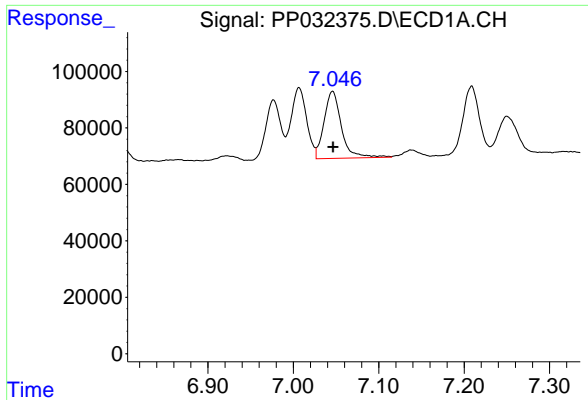
#24 AR-1248-4

R.T.: 7.007 min
 Delta R.T.: 0.000 min
 Response: 320359
 Conc: 251.67 ng/ml



#24 AR-1248-4

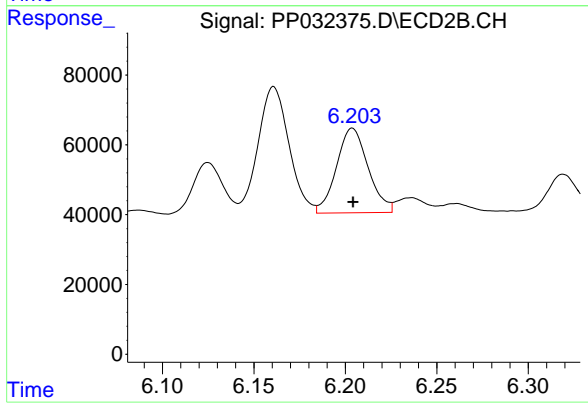
R.T.: 5.782 min
 Delta R.T.: 0.000 min
 Response: 349510
 Conc: 260.22 ng/ml



#25 AR-1248-5

R.T.: 7.046 min
Delta R.T.: 0.000 min
Response: 335722
Conc: 247.56 ng/ml

Instrument :
ECD_P
ClientSampleId :
AR1248ICC250



#25 AR-1248-5

R.T.: 6.204 min
Delta R.T.: 0.000 min
Response: 293055
Conc: 249.09 ng/ml