

Data Path : Z:\pestpcbsrv\HPCHEM1\ECD_P\Data\PP122421\
 Data File : PP042203.D
 Signal(s) : Signal #1: ECD1A.CH Signal #2: ECD2B.CH
 Acq On : 24 Dec 2021 18:13
 Operator : AJ\MA
 Sample : M5224-06
 Misc :
 ALS Vial : 16 Sample Multiplier: 1

Instrument :
 ECD_P
 ClientSampleId :
 SB-COMP

Integration File signal 1: autoint1.e
 Integration File signal 2: autoint2.e
 Quant Time: Dec 25 04:22:37 2021
 Quant Method : Z:\pestpcbsrv\HPCHEM1\ECD_P\methods\PP122321.M
 Quant Title : GC EXTRACTABLES
 QLast Update : Fri Dec 24 23:47:53 2021
 Response via : Initial Calibration
 Integrator: ChemStation 6890 Scale Mode: Small noise peaks clipped

Volume Inj. : 2 µl
 Signal #1 Phase : ZB-MR1 Signal #2 Phase: ZB-MR2
 Signal #1 Info : 30Mx0.32mmx 0.50µ Signal #2 Info : 30M x 0.32mm x 0.25µm

Compound	RT#1	RT#2	Resp#1	Resp#2	ng/ml	ng/ml
System Monitoring Compounds						
1) SA Tetrachlo...	4.923	4.060	243297	601358	18.530	26.330 #
2) SA Decachlor...	10.916	9.413	228991	271890	18.800	16.813
Target Compounds						
3) L1 AR-1016-1	6.259f	5.355f	3339	7902	7.512	8.621
4) L1 AR-1016-2	6.259	5.355	3339	7902	5.048	6.272
6) L1 AR-1016-4	6.403f	5.596	12277	28373	37.685	52.248 #
7) L1 AR-1016-5	6.743	5.828	8054	13838	23.466	21.224
8) L2 AR-1221-1	5.155	0.000	60156	0	379.633	N.D. #
9) L2 AR-1221-2	0.000	4.396f	0	87268	N.D.	411.110 #
10) L2 AR-1221-3	5.364	0.000	40827	0	116.711	N.D. #
11) L3 AR-1232-1	5.364	0.000	40827	0	141.342	N.D. #
12) L3 AR-1232-2	0.000	5.355	0	7902	N.D.	14.851 #
13) L3 AR-1232-3	6.259	0.000	3339	0	12.763	N.D. #
14) L3 AR-1232-4	6.403f	5.642	12277	8623	93.667	35.749 #
15) L3 AR-1232-5	6.529	5.828	16097	13838	155.990	56.992 #
16) L4 AR-1242-1	6.259f	5.355f	3339	7902	10.241	11.606
17) L4 AR-1242-2	6.259	5.355	3339	7902	6.996	8.485
19) L4 AR-1242-4	6.403f	5.642	12277	8623	50.108	17.042 #
20) L4 AR-1242-5	7.175f	6.209	65051	114051	250.110	192.394
21) L5 AR-1248-1	6.259f	5.355f	3339	7902	13.338	15.211
22) L5 AR-1248-2	6.529	5.596	16097	28373	45.576	40.290
23) L5 AR-1248-3	6.743	5.642	8054	8623	19.150	11.620 #
24) L5 AR-1248-4	7.175	5.828	65051	13838	143.471	16.437 #
25) L5 AR-1248-5	0.000	6.242	0	32945	N.D.	39.773 #
26) L6 AR-1254-1	7.141	6.209	75040	114051	150.523	91.184 #
27) L6 AR-1254-2	7.374	6.368	112387	153841	146.597	141.367
28) L6 AR-1254-3	7.753	6.794	66129	128870	85.706	77.570
29) L6 AR-1254-4	8.048	7.032	49099	73957	88.245	75.812
30) L6 AR-1254-5	8.478	7.464	432169	537840	690.149	419.722 #
31) L7 AR-1260-1	7.924	6.930	157776	353216	266.231	332.362
32) L7 AR-1260-2	8.187	7.126	381736	429929	494.404	348.266 #
33) L7 AR-1260-3	8.558	7.284	167816	248995	324.402	185.818 #
34) L7 AR-1260-4	8.786	7.770	206905	208008	357.336	232.942 #
35) L7 AR-1260-5	9.108	8.017	266211	483893	227.514	251.435
36) L8 AR-1262-1	8.558	7.464	167816	537840	218.683	808.351 #
37) L8 AR-1262-2	9.108	7.770	266211	208008	217.200	191.779
38) L8 AR-1262-3	9.434	8.306	191989	78470	390.585	102.999 #
39) L8 AR-1262-4	9.511	8.369	58850	355891	159.680	233.635 #
40) L8 AR-1262-5	10.167	8.870	67179	100142	146.672	140.056
41) L9 AR-1268-1	9.434	8.306	191989	78470	126.629	34.677 #
42) L9 AR-1268-2	9.511	8.369	58850	355891	41.472	163.013 #
43) L9 AR-1268-3	9.745	0.000	7030	0	5.462	N.D. #

Data Path : Z:\pestpcbsrv\HPCHEM1\ECD_P\Data\PP122421\
 Data File : PP042203.D
 Signal(s) : Signal #1: ECD1A.CH Signal #2: ECD2B.CH
 Acq On : 24 Dec 2021 18:13
 Operator : AJ\MA
 Sample : M5224-06
 Misc :
 ALS Vial : 16 Sample Multiplier: 1

Instrument :
 ECD_P
 ClientSampleId :
 SB-COMP

Integration File signal 1: autoint1.e
 Integration File signal 2: autoint2.e
 Quant Time: Dec 25 04:22:37 2021
 Quant Method : Z:\pestpcbsrv\HPCHEM1\ECD_P\methods\PP122321.M
 Quant Title : GC EXTRACTABLES
 QLast Update : Fri Dec 24 23:47:53 2021
 Response via : Initial Calibration
 Integrator: ChemStation 6890 Scale Mode: Small noise peaks clipped

Volume Inj. : 2 µl
 Signal #1 Phase : ZB-MR1 Signal #2 Phase: ZB-MR2
 Signal #1 Info : 30Mx0.32mmx 0.50µ Signal #2 Info : 30M x 0.32mm x 0.25µm

	Compound	RT#1	RT#2	Resp#1	Resp#2	ng/ml	ng/ml
44)	L9 AR-1268-4	10.167	8.870	67179	100142	129.638	126.651
45)	L9 AR-1268-5	10.581	9.159	24703	33989	6.370	5.955

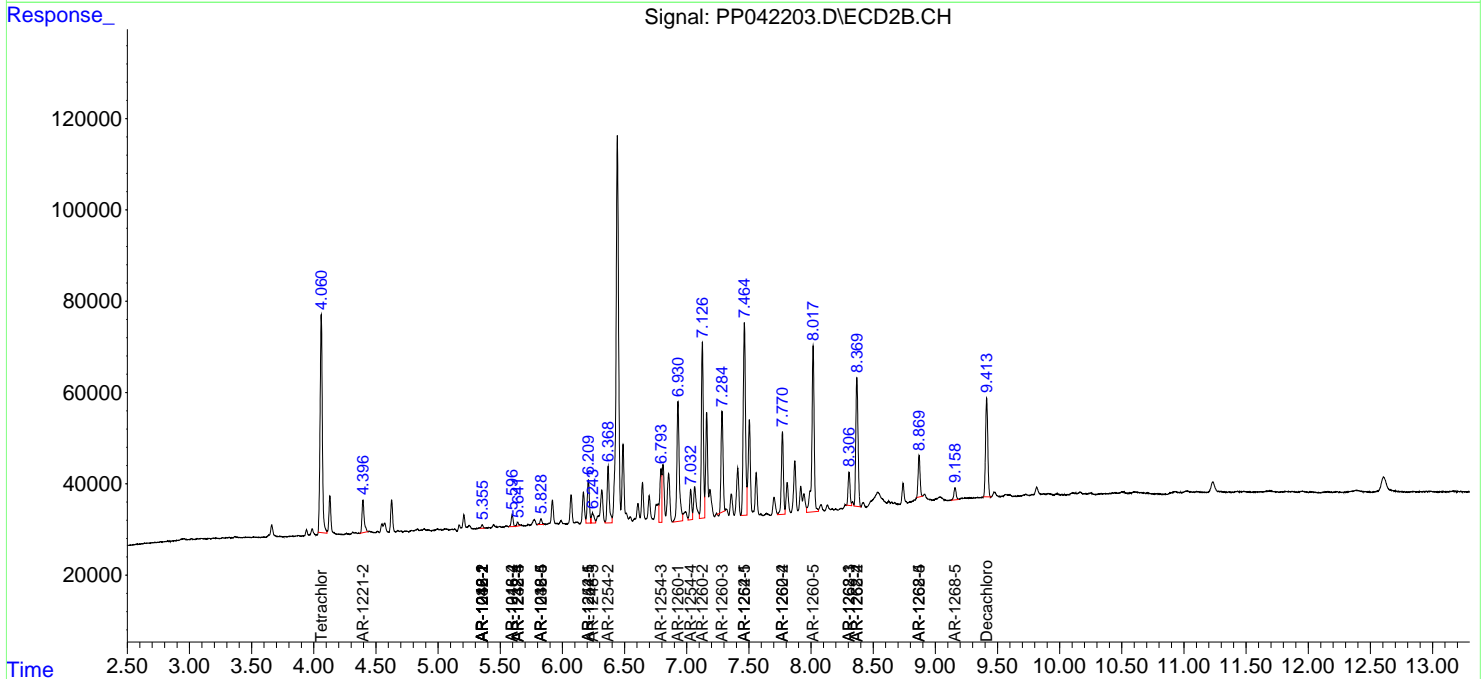
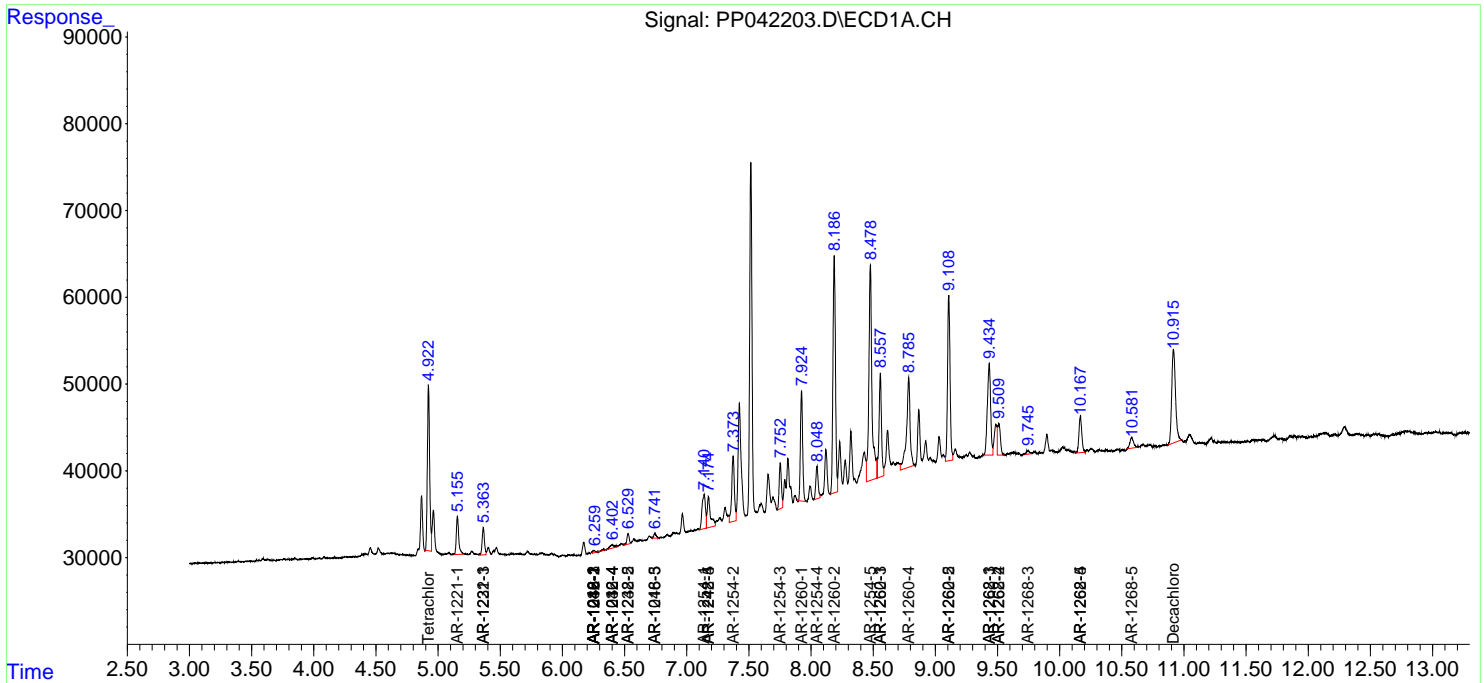
(f)=RT Delta > 1/2 Window (#)=Amounts differ by > 25% (m)=manual int.

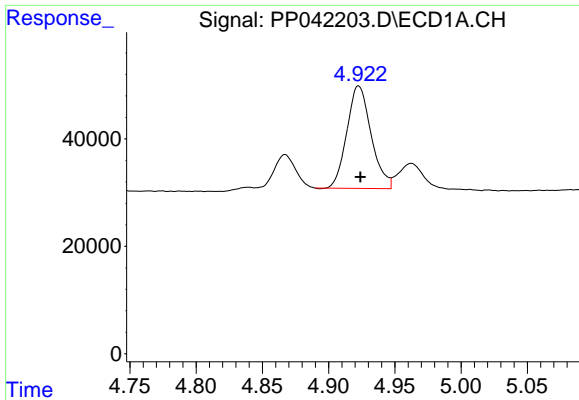
Data Path : Z:\pestpcbsrv\HPCHEM1\ECD_P\Data\PP122421\
 Data File : PP042203.D
 Signal(s) : Signal #1: ECD1A.CH Signal #2: ECD2B.CH
 Acq On : 24 Dec 2021 18:13
 Operator : AJ\MA
 Sample : M5224-06
 Misc :
 ALS Vial : 16 Sample Multiplier: 1

Instrument :
 ECD_P
 ClientSampleId :
 SB-COMP

Integration File signal 1: autoint1.e
 Integration File signal 2: autoint2.e
 Quant Time: Dec 25 04:22:37 2021
 Quant Method : Z:\pestpcbsrv\HPCHEM1\ECD_P\methods\PP122321.M
 Quant Title : GC EXTRACTABLES
 QLast Update : Fri Dec 24 23:47:53 2021
 Response via : Initial Calibration
 Integrator: ChemStation 6890 Scale Mode: Small noise peaks clipped

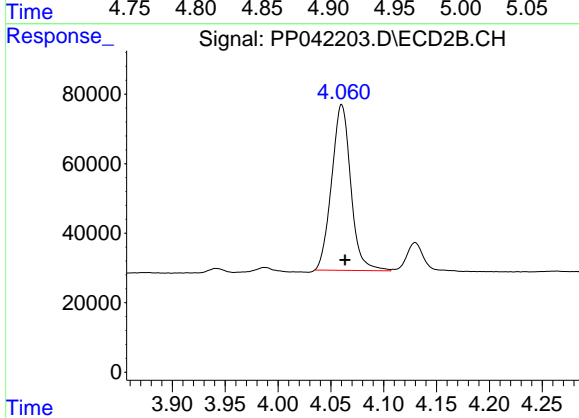
Volume Inj. : 2 µl
 Signal #1 Phase : ZB-MR1 Signal #2 Phase: ZB-MR2
 Signal #1 Info : 30Mx0.32mmx 0.50µ Signal #2 Info : 30M x 0.32mm x 0.25µm



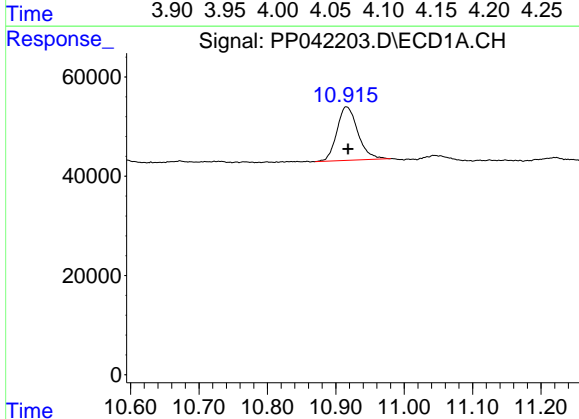


#1 Tetrachloro-m-xylene
 R.T.: 4.923 min
 Delta R.T.: -0.001 min
 Response: 243297
 Conc: 18.53 ng/ml

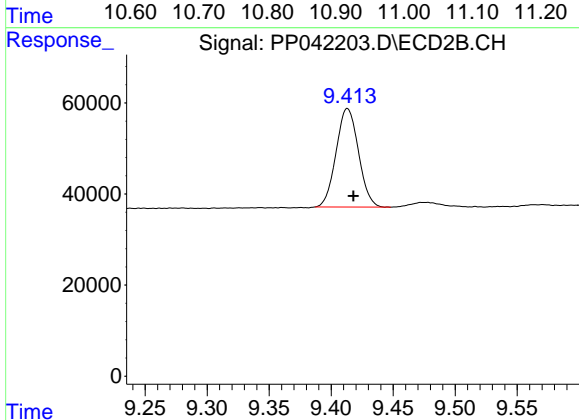
Instrument :
 ECD_P
 ClientSampleId :
 SB-COMP



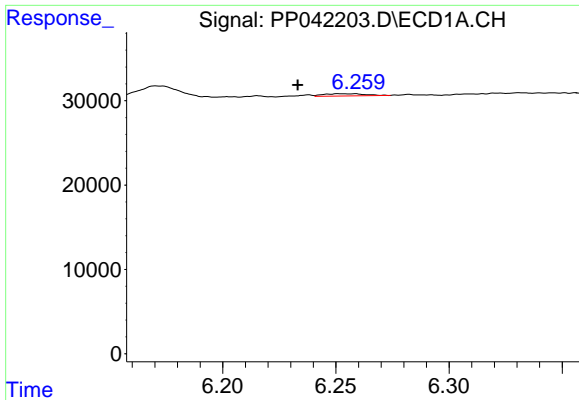
#1 Tetrachloro-m-xylene
 R.T.: 4.060 min
 Delta R.T.: -0.003 min
 Response: 601358
 Conc: 26.33 ng/ml



#2 Decachlorobiphenyl
 R.T.: 10.916 min
 Delta R.T.: -0.003 min
 Response: 228991
 Conc: 18.80 ng/ml



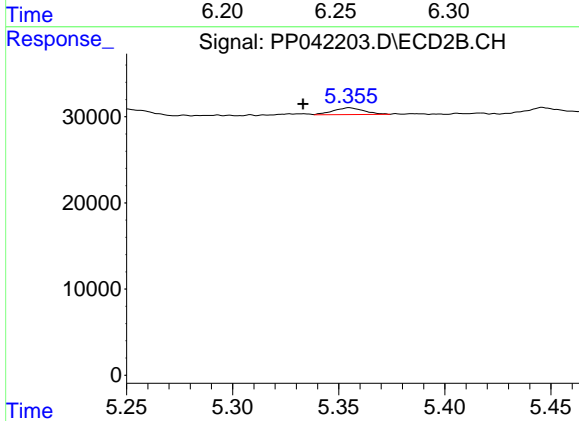
#2 Decachlorobiphenyl
 R.T.: 9.413 min
 Delta R.T.: -0.005 min
 Response: 271890
 Conc: 16.81 ng/ml



#3 AR-1016-1

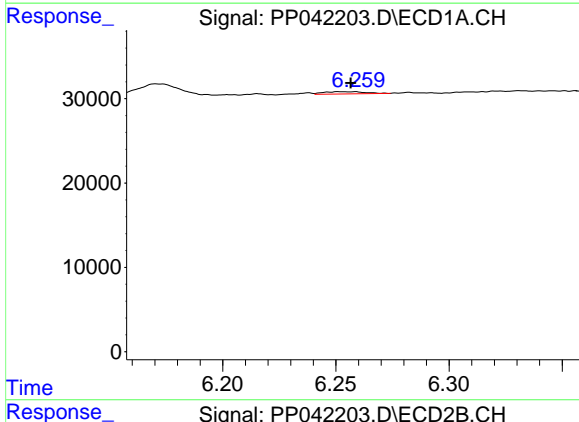
R.T.: 6.259 min
 Delta R.T.: 0.026 min
 Response: 3339
 Conc: 7.51 ng/ml

Instrument :
 ECD_P
 ClientSampleId :
 SB-COMP



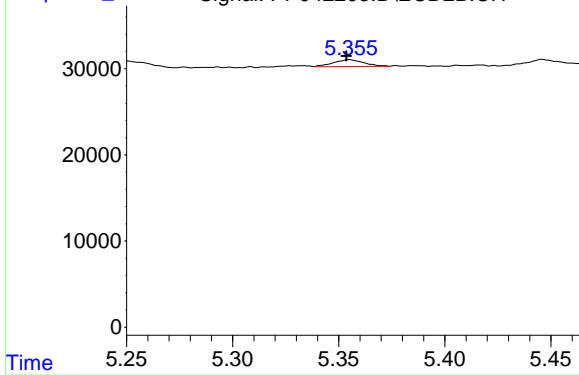
#3 AR-1016-1

R.T.: 5.355 min
 Delta R.T.: 0.022 min
 Response: 7902
 Conc: 8.62 ng/ml



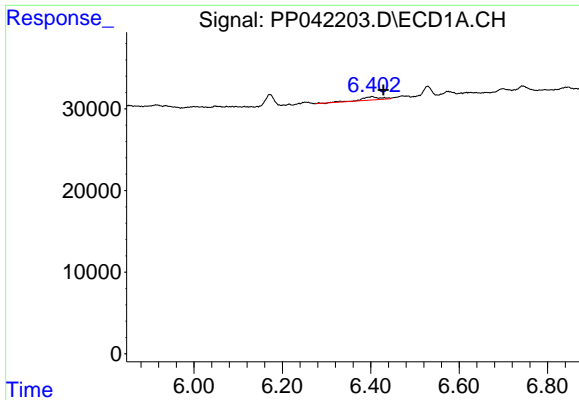
#4 AR-1016-2

R.T.: 6.259 min
 Delta R.T.: 0.002 min
 Response: 3339
 Conc: 5.05 ng/ml



#4 AR-1016-2

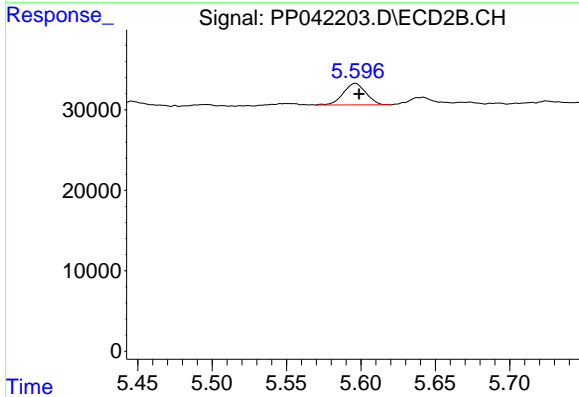
R.T.: 5.355 min
 Delta R.T.: 0.001 min
 Response: 7902
 Conc: 6.27 ng/ml



#6 AR-1016-4

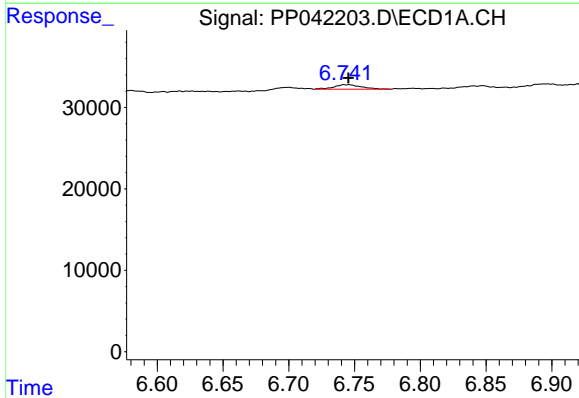
R.T.: 6.403 min
 Delta R.T.: -0.025 min
 Response: 12277
 Conc: 37.68 ng/ml

Instrument :
 ECD_P
 ClientSampleId :
 SB-COMP



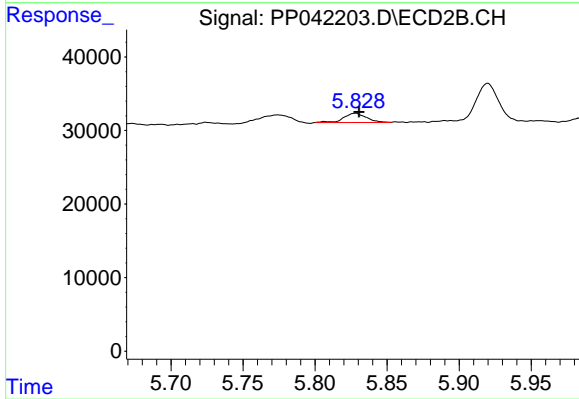
#6 AR-1016-4

R.T.: 5.596 min
 Delta R.T.: -0.002 min
 Response: 28373
 Conc: 52.25 ng/ml



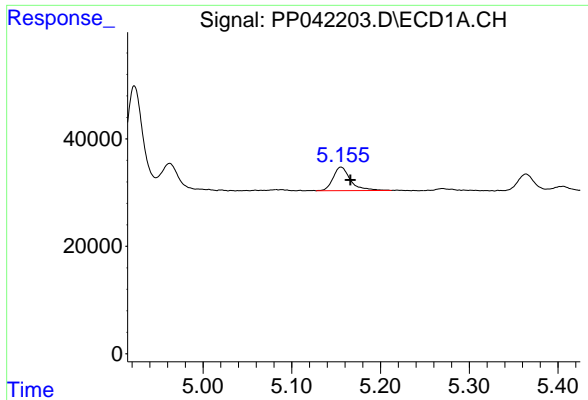
#7 AR-1016-5

R.T.: 6.743 min
 Delta R.T.: -0.002 min
 Response: 8054
 Conc: 23.47 ng/ml



#7 AR-1016-5

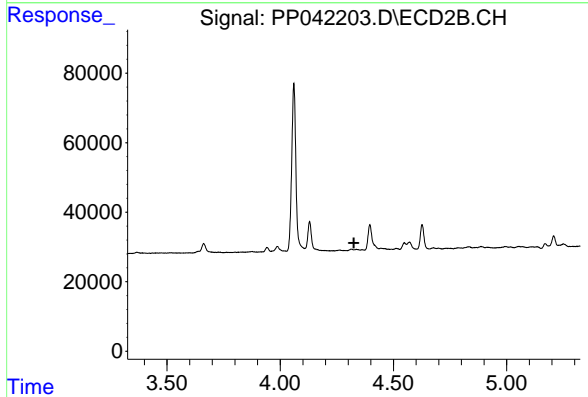
R.T.: 5.828 min
 Delta R.T.: -0.002 min
 Response: 13838
 Conc: 21.22 ng/ml



#8 AR-1221-1

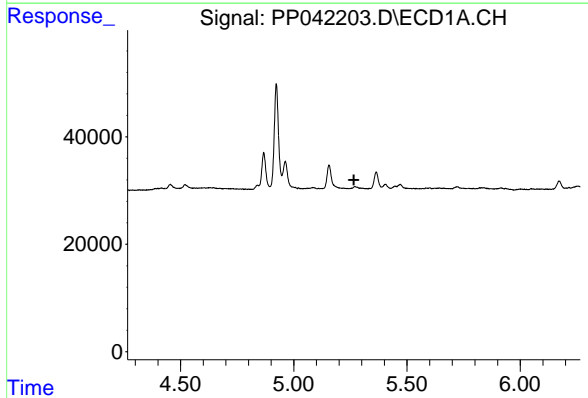
R.T.: 5.155 min
 Delta R.T.: -0.011 min
 Response: 60156
 Conc: 379.63 ng/ml

Instrument :
 ECD_P
 ClientSampleId :
 SB-COMP



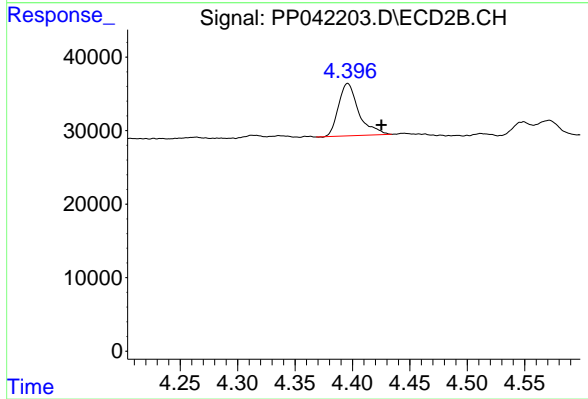
#8 AR-1221-1

R.T.: 0.000 min
 Exp R.T. : 4.325 min
 Response: 0
 Conc: N.D.



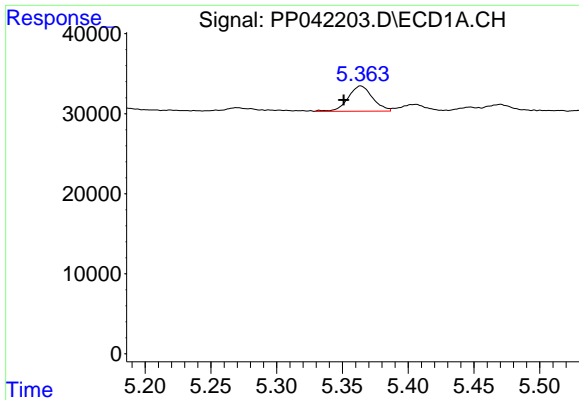
#9 AR-1221-2

R.T.: 0.000 min
 Exp R.T. : 5.266 min
 Response: 0
 Conc: N.D.



#9 AR-1221-2

R.T.: 4.396 min
 Delta R.T.: -0.029 min
 Response: 87268
 Conc: 411.11 ng/ml

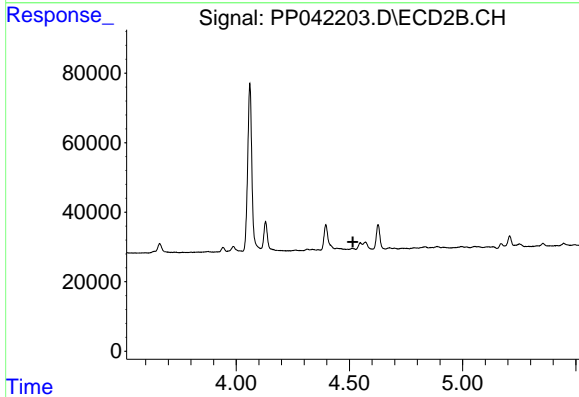


#10 AR-1221-3

R.T.: 5.364 min
 Delta R.T.: 0.013 min
 Response: 40827
 Conc: 116.71 ng/ml

Instrument :
 ECD_P
 ClientSampleId :
 SB-COMP

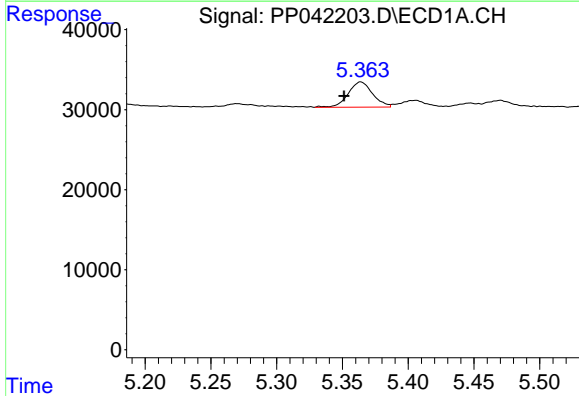
Time



#10 AR-1221-3

R.T.: 0.000 min
 Exp R.T. : 4.515 min
 Response: 0
 Conc: N.D.

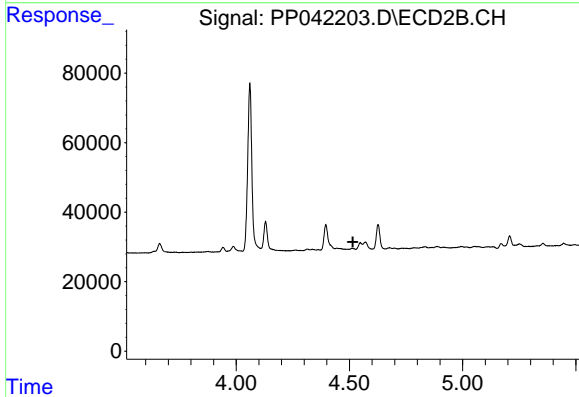
Time



#11 AR-1232-1

R.T.: 5.364 min
 Delta R.T.: 0.013 min
 Response: 40827
 Conc: 141.34 ng/ml

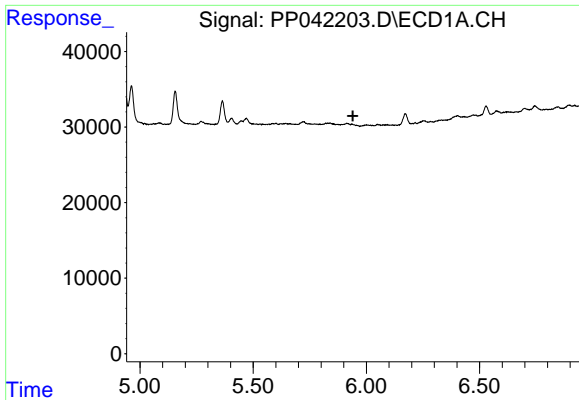
Time



#11 AR-1232-1

R.T.: 0.000 min
 Exp R.T. : 4.515 min
 Response: 0
 Conc: N.D.

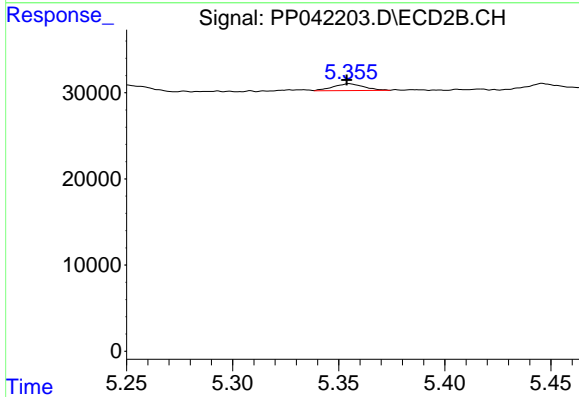
Time



#12 AR-1232-2

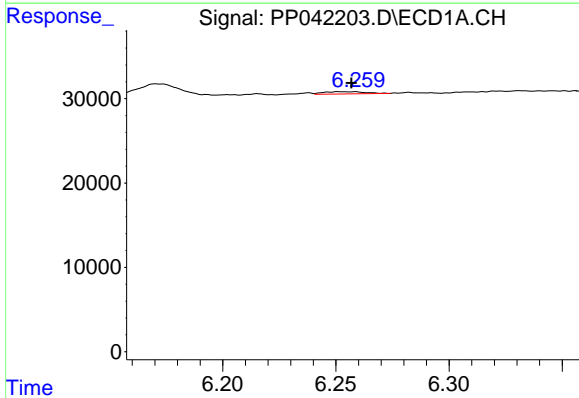
R.T.: 0.000 min
 Exp R.T.: 5.940 min
 Response: 0
 Conc: N.D.

Instrument :
 ECD_P
 ClientSampleId :
 SB-COMP



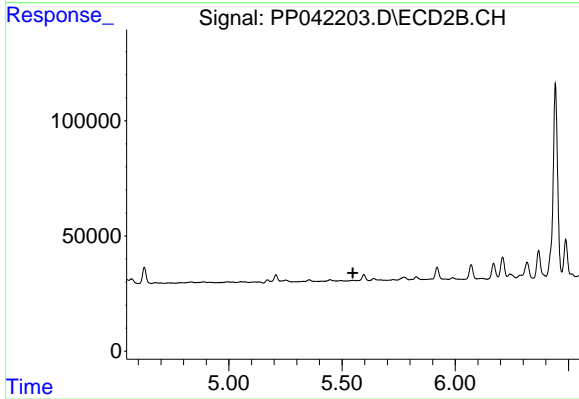
#12 AR-1232-2

R.T.: 5.355 min
 Delta R.T.: 0.001 min
 Response: 7902
 Conc: 14.85 ng/ml



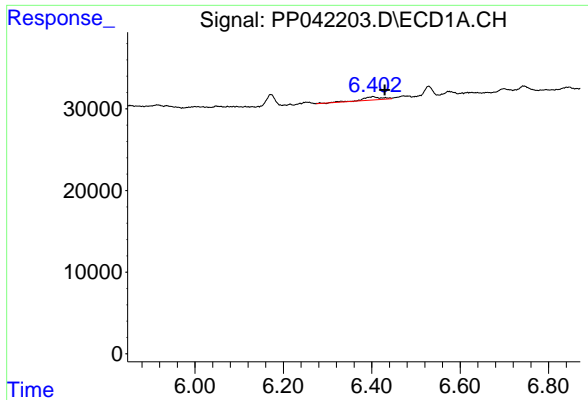
#13 AR-1232-3

R.T.: 6.259 min
 Delta R.T.: 0.002 min
 Response: 3339
 Conc: 12.76 ng/ml



#13 AR-1232-3

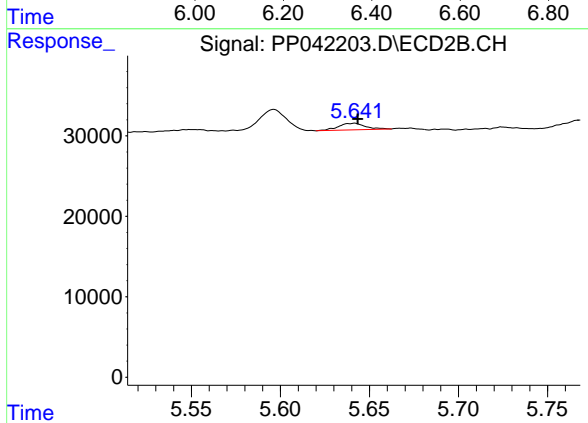
R.T.: 0.000 min
 Exp R.T.: 5.548 min
 Response: 0
 Conc: N.D.



#14 AR-1232-4

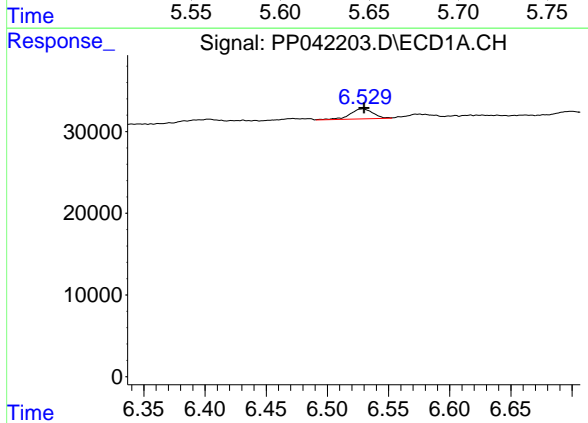
R.T.: 6.403 min
 Delta R.T.: -0.026 min
 Response: 12277
 Conc: 93.67 ng/ml

Instrument :
 ECD_P
 ClientSampleId :
 SB-COMP



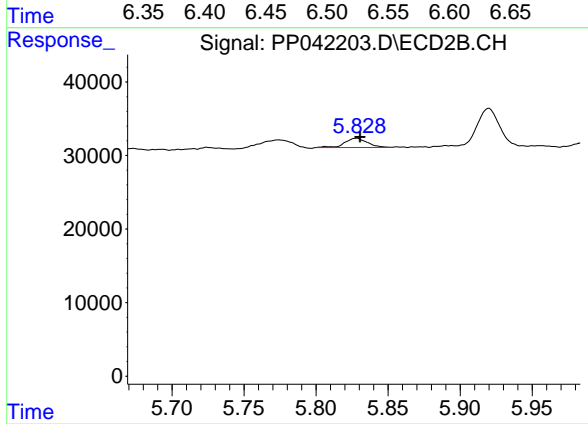
#14 AR-1232-4

R.T.: 5.642 min
 Delta R.T.: -0.002 min
 Response: 8623
 Conc: 35.75 ng/ml



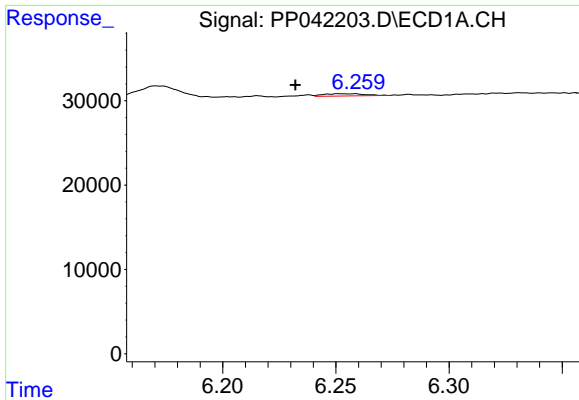
#15 AR-1232-5

R.T.: 6.529 min
 Delta R.T.: -0.001 min
 Response: 16097
 Conc: 155.99 ng/ml



#15 AR-1232-5

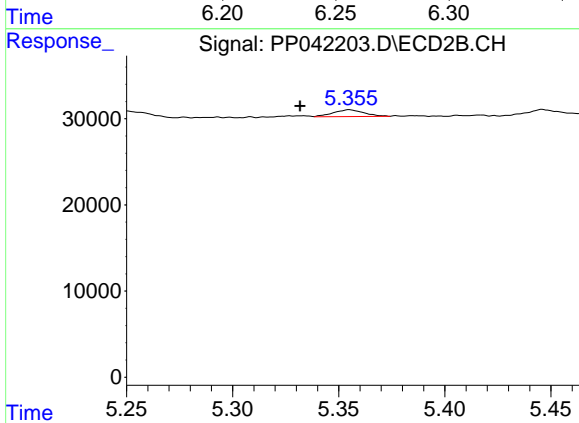
R.T.: 5.828 min
 Delta R.T.: -0.002 min
 Response: 13838
 Conc: 56.99 ng/ml



#16 AR-1242-1

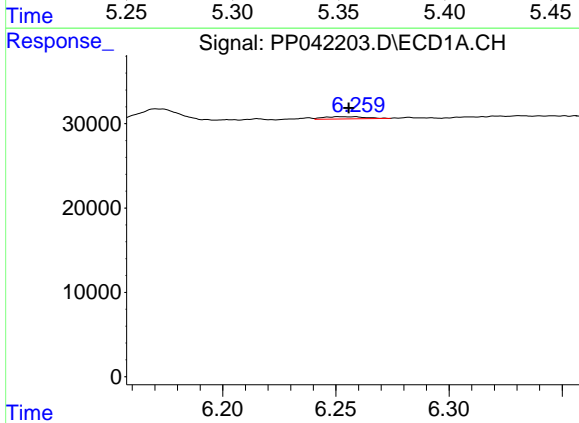
R.T.: 6.259 min
 Delta R.T.: 0.027 min
 Response: 3339
 Conc: 10.24 ng/ml

Instrument :
 ECD_P
 ClientSampleId :
 SB-COMP



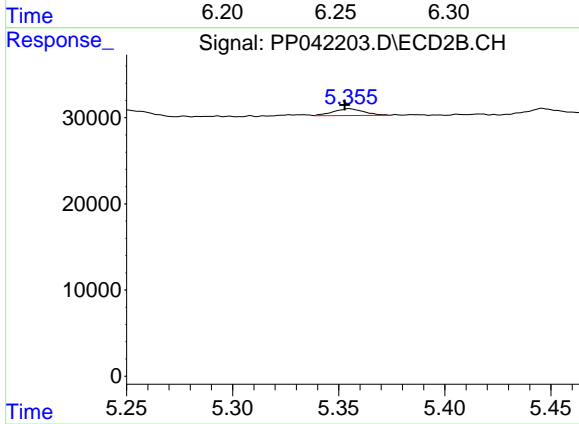
#16 AR-1242-1

R.T.: 5.355 min
 Delta R.T.: 0.023 min
 Response: 7902
 Conc: 11.61 ng/ml



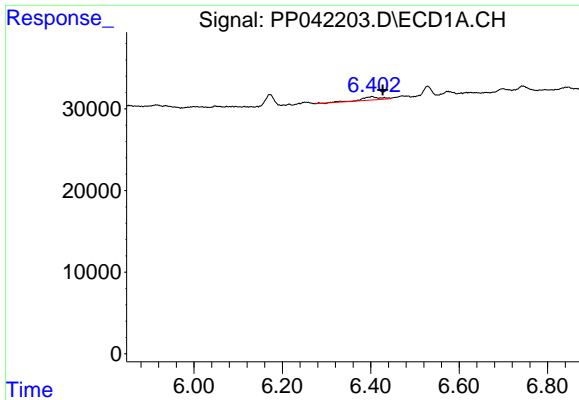
#17 AR-1242-2

R.T.: 6.259 min
 Delta R.T.: 0.003 min
 Response: 3339
 Conc: 7.00 ng/ml



#17 AR-1242-2

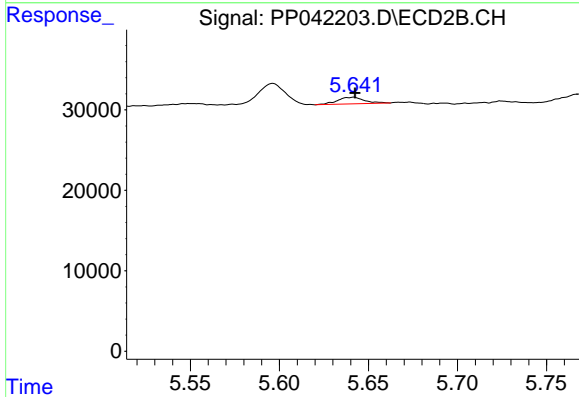
R.T.: 5.355 min
 Delta R.T.: 0.002 min
 Response: 7902
 Conc: 8.48 ng/ml



#19 AR-1242-4

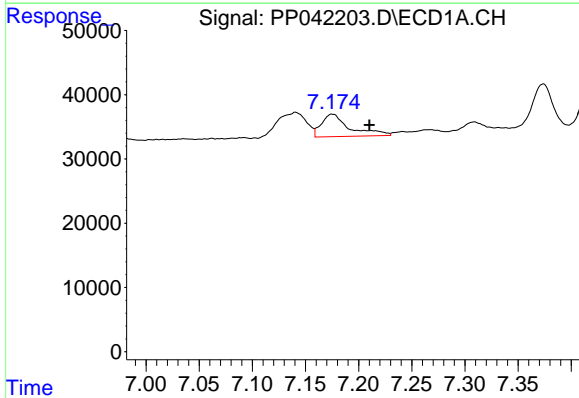
R.T.: 6.403 min
 Delta R.T.: -0.024 min
 Response: 12277
 Conc: 50.11 ng/ml

Instrument :
 ECD_P
 ClientSampleId :
 SB-COMP



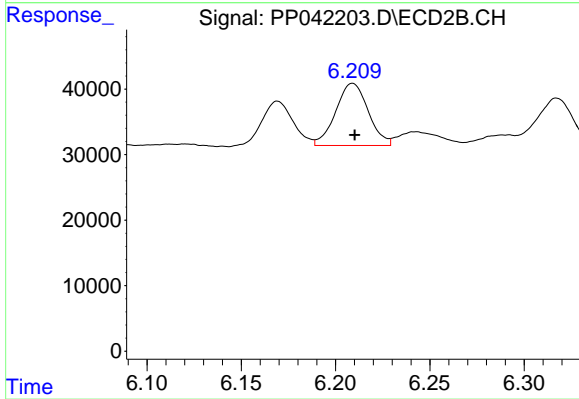
#19 AR-1242-4

R.T.: 5.642 min
 Delta R.T.: 0.000 min
 Response: 8623
 Conc: 17.04 ng/ml



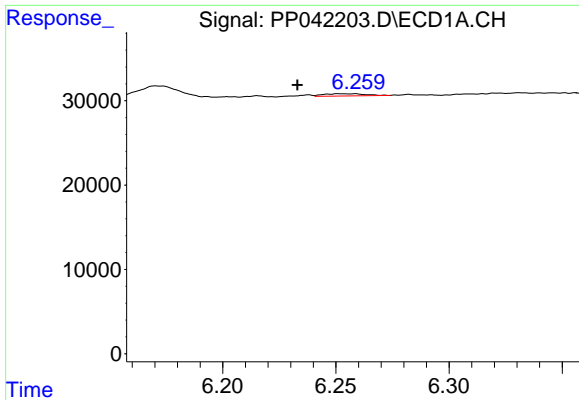
#20 AR-1242-5

R.T.: 7.175 min
 Delta R.T.: -0.035 min
 Response: 65051
 Conc: 250.11 ng/ml



#20 AR-1242-5

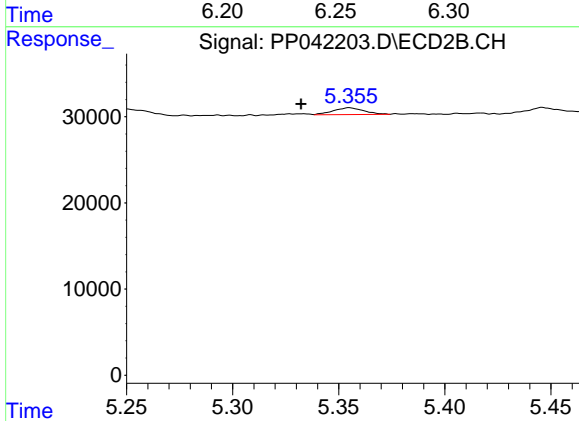
R.T.: 6.209 min
 Delta R.T.: -0.001 min
 Response: 114051
 Conc: 192.39 ng/ml



#21 AR-1248-1

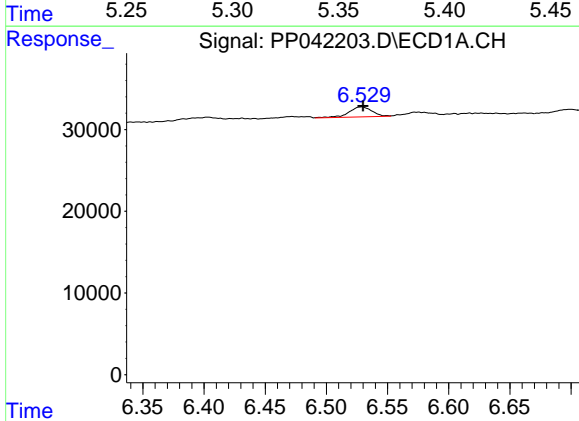
R.T.: 6.259 min
 Delta R.T.: 0.026 min
 Response: 3339
 Conc: 13.34 ng/ml

Instrument :
 ECD_P
 ClientSampleId :
 SB-COMP



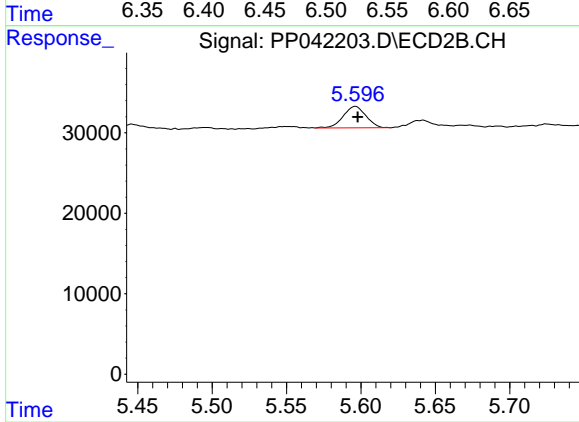
#21 AR-1248-1

R.T.: 5.355 min
 Delta R.T.: 0.023 min
 Response: 7902
 Conc: 15.21 ng/ml



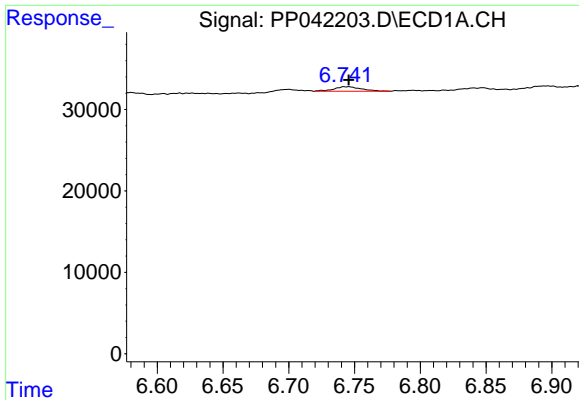
#22 AR-1248-2

R.T.: 6.529 min
 Delta R.T.: -0.001 min
 Response: 16097
 Conc: 45.58 ng/ml



#22 AR-1248-2

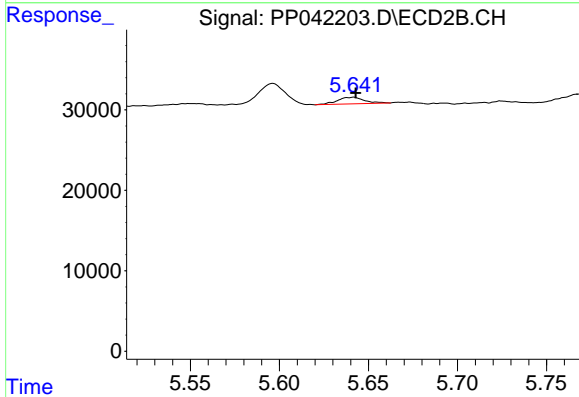
R.T.: 5.596 min
 Delta R.T.: -0.002 min
 Response: 28373
 Conc: 40.29 ng/ml



#23 AR-1248-3

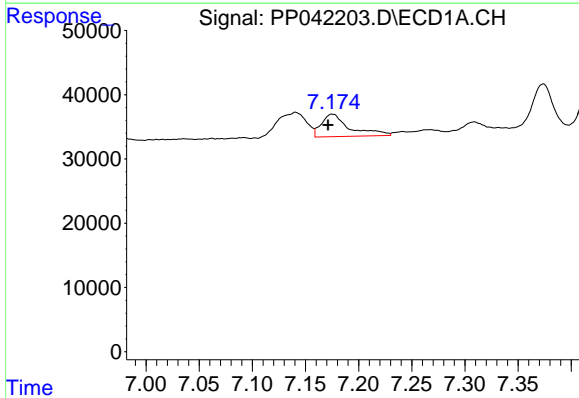
R.T.: 6.743 min
 Delta R.T.: -0.003 min
 Response: 8054
 Conc: 19.15 ng/ml

Instrument :
 ECD_P
 ClientSampleId :
 SB-COMP



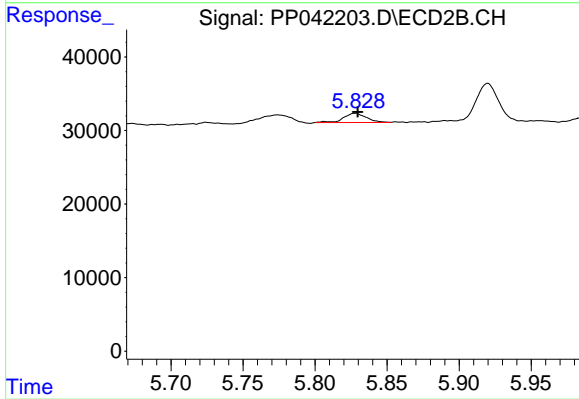
#23 AR-1248-3

R.T.: 5.642 min
 Delta R.T.: 0.000 min
 Response: 8623
 Conc: 11.62 ng/ml



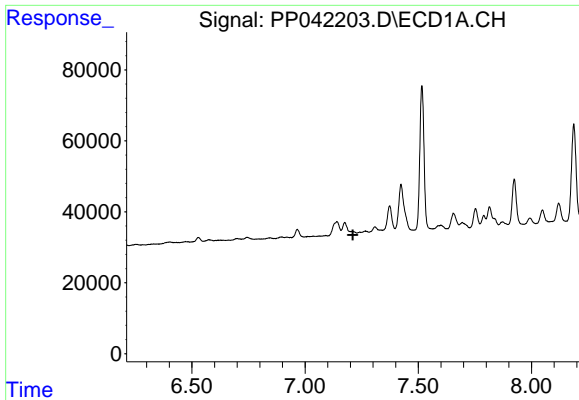
#24 AR-1248-4

R.T.: 7.175 min
 Delta R.T.: 0.004 min
 Response: 65051
 Conc: 143.47 ng/ml



#24 AR-1248-4

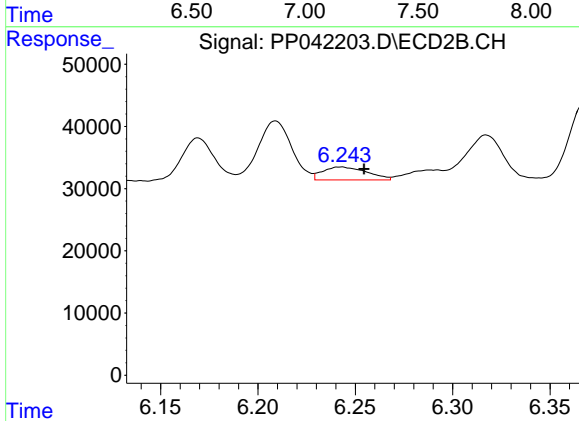
R.T.: 5.828 min
 Delta R.T.: -0.001 min
 Response: 13838
 Conc: 16.44 ng/ml



#25 AR-1248-5

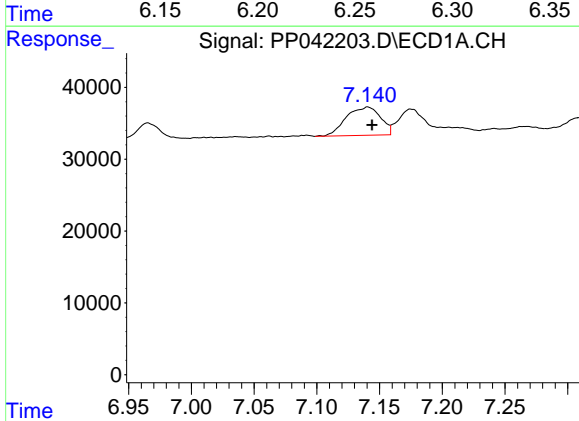
R.T.: 0.000 min
 Exp R.T.: 7.211 min
 Response: 0
 Conc: N.D.

Instrument :
 ECD_P
 ClientSampleId :
 SB-COMP



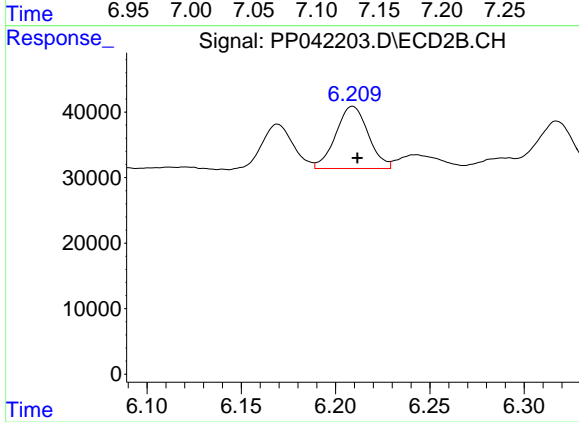
#25 AR-1248-5

R.T.: 6.242 min
 Delta R.T.: -0.012 min
 Response: 32945
 Conc: 39.77 ng/ml



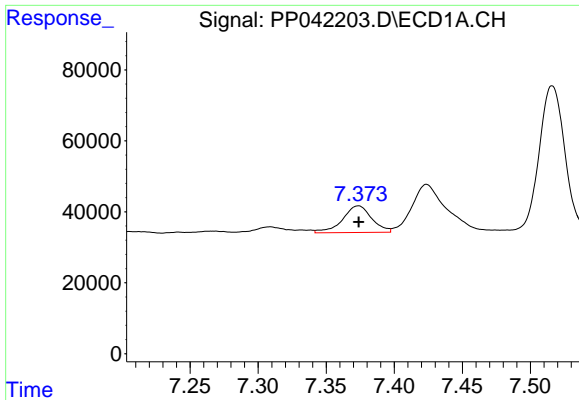
#26 AR-1254-1

R.T.: 7.141 min
 Delta R.T.: -0.003 min
 Response: 75040
 Conc: 150.52 ng/ml



#26 AR-1254-1

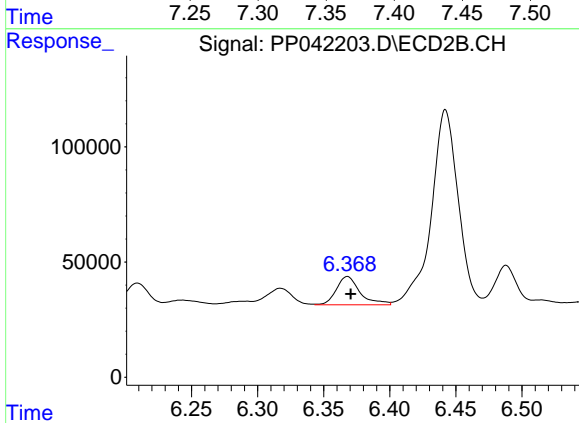
R.T.: 6.209 min
 Delta R.T.: -0.002 min
 Response: 114051
 Conc: 91.18 ng/ml



#27 AR-1254-2

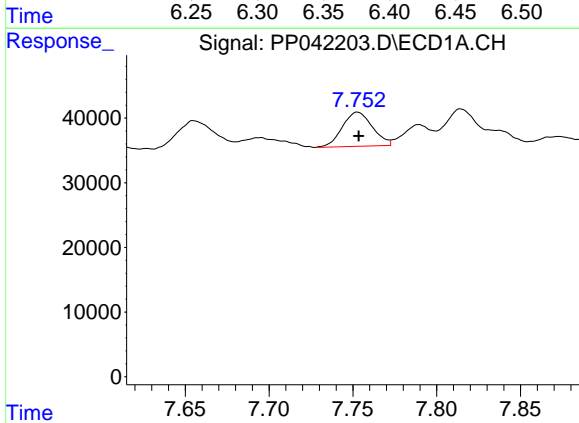
R.T.: 7.374 min
 Delta R.T.: 0.000 min
 Response: 112387
 Conc: 146.60 ng/ml

Instrument :
 ECD_P
 ClientSampleId :
 SB-COMP



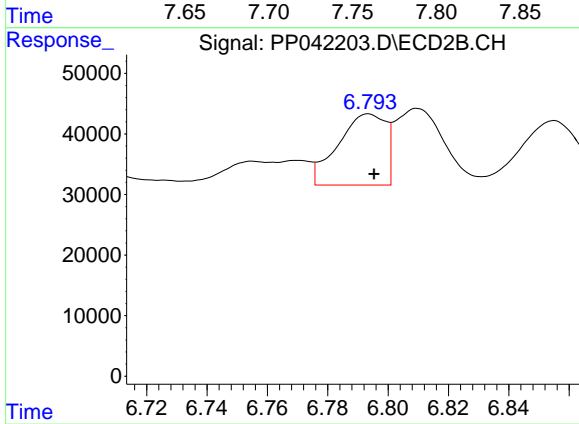
#27 AR-1254-2

R.T.: 6.368 min
 Delta R.T.: -0.002 min
 Response: 153841
 Conc: 141.37 ng/ml



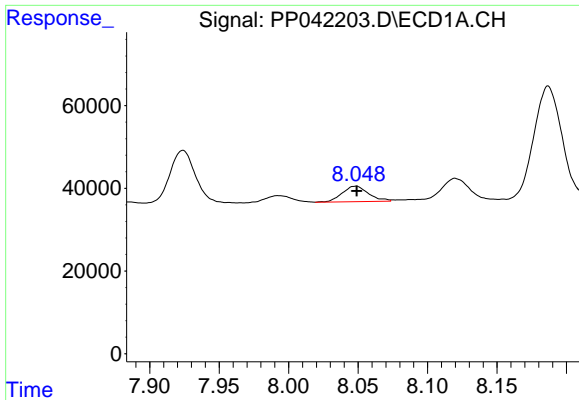
#28 AR-1254-3

R.T.: 7.753 min
 Delta R.T.: 0.000 min
 Response: 66129
 Conc: 85.71 ng/ml



#28 AR-1254-3

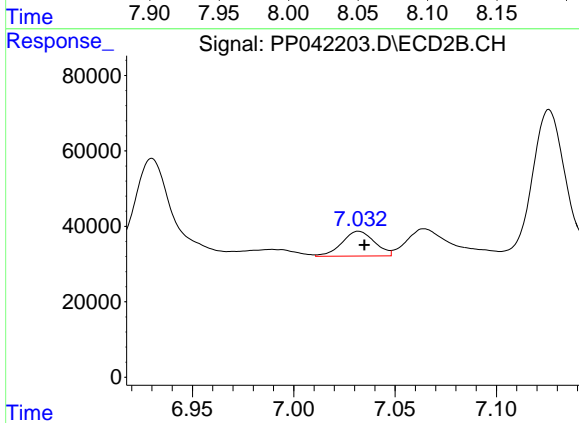
R.T.: 6.794 min
 Delta R.T.: -0.002 min
 Response: 128870
 Conc: 77.57 ng/ml



#29 AR-1254-4

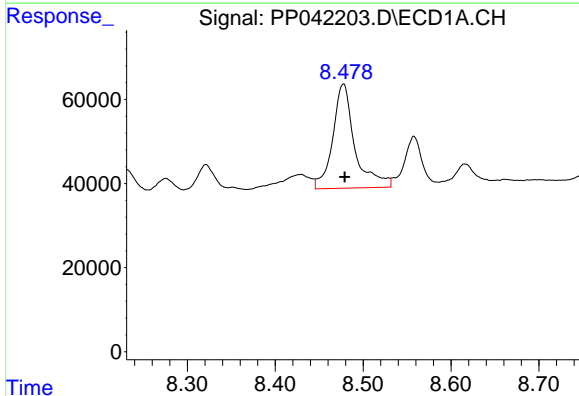
R.T.: 8.048 min
 Delta R.T.: 0.000 min
 Response: 49099
 Conc: 88.25 ng/ml

Instrument :
 ECD_P
 ClientSampleId :
 SB-COMP



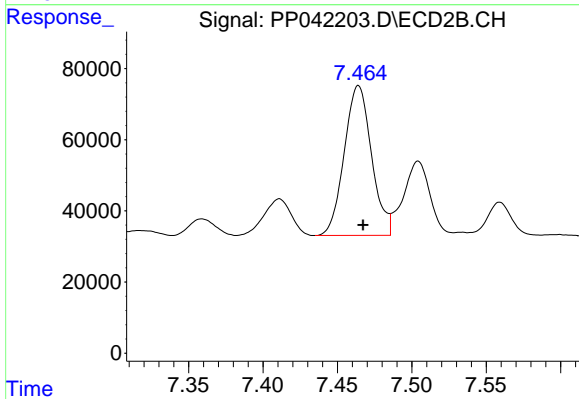
#29 AR-1254-4

R.T.: 7.032 min
 Delta R.T.: -0.003 min
 Response: 73957
 Conc: 75.81 ng/ml



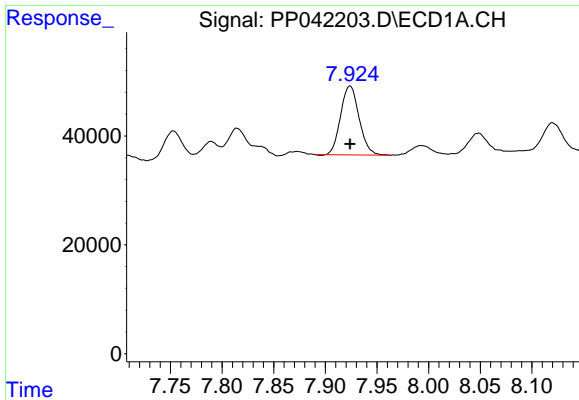
#30 AR-1254-5

R.T.: 8.478 min
 Delta R.T.: -0.002 min
 Response: 432169
 Conc: 690.15 ng/ml



#30 AR-1254-5

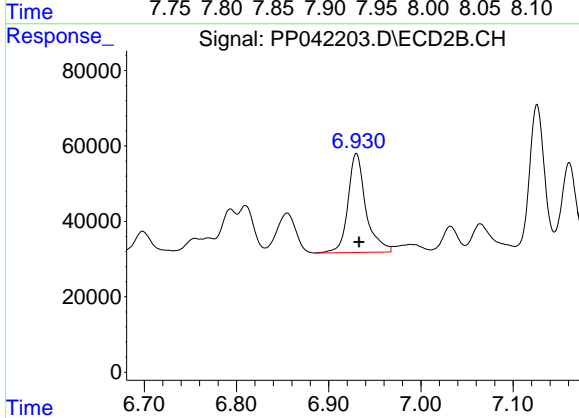
R.T.: 7.464 min
 Delta R.T.: -0.003 min
 Response: 537840
 Conc: 419.72 ng/ml



#31 AR-1260-1

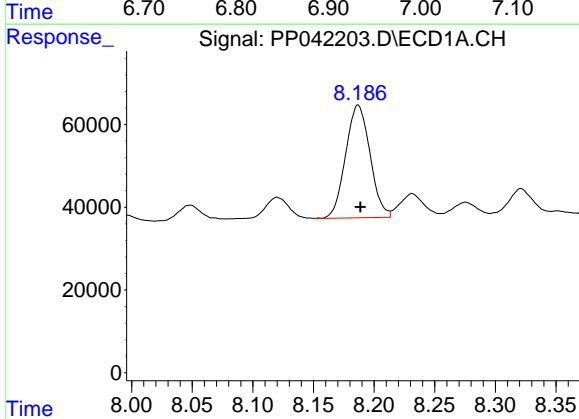
R.T.: 7.924 min
 Delta R.T.: 0.000 min
 Response: 157776
 Conc: 266.23 ng/ml

Instrument :
 ECD_P
 ClientSampleId :
 SB-COMP



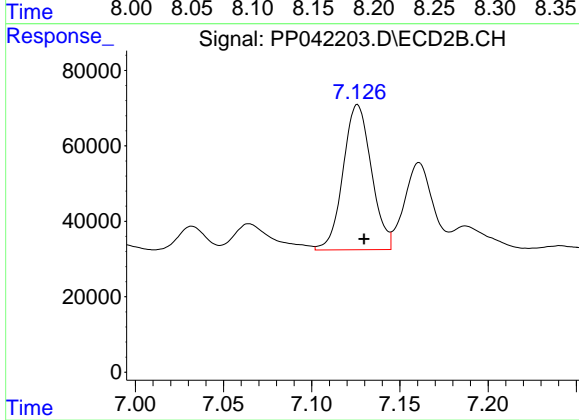
#31 AR-1260-1

R.T.: 6.930 min
 Delta R.T.: -0.003 min
 Response: 353216
 Conc: 332.36 ng/ml



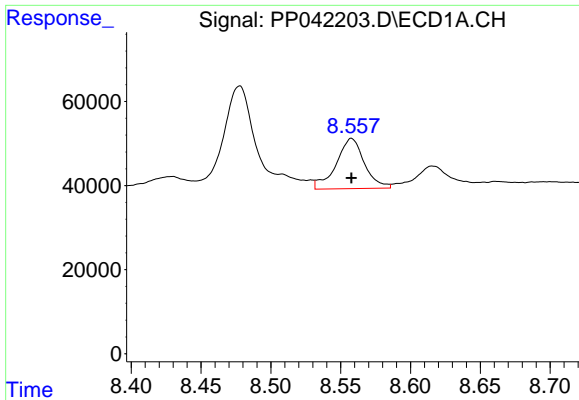
#32 AR-1260-2

R.T.: 8.187 min
 Delta R.T.: -0.002 min
 Response: 381736
 Conc: 494.40 ng/ml



#32 AR-1260-2

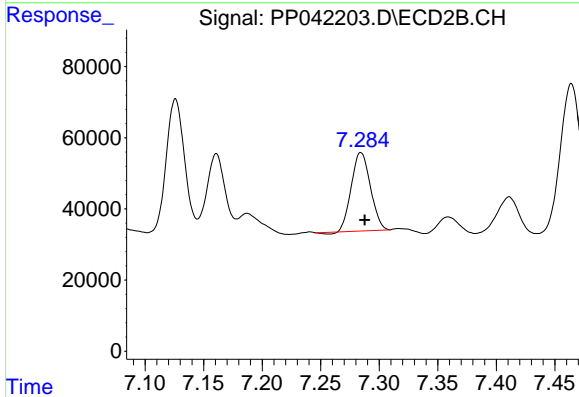
R.T.: 7.126 min
 Delta R.T.: -0.004 min
 Response: 429929
 Conc: 348.27 ng/ml



#33 AR-1260-3

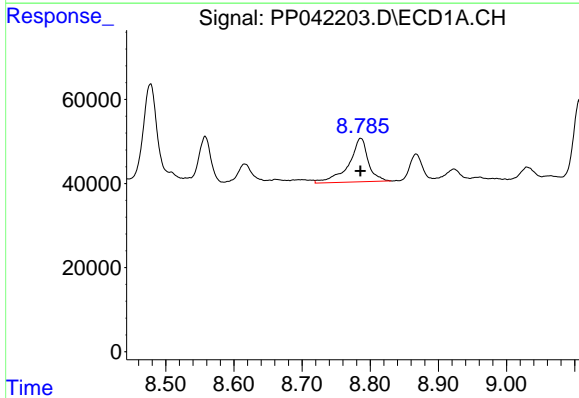
R.T.: 8.558 min
 Delta R.T.: 0.000 min
 Response: 167816
 Conc: 324.40 ng/ml

Instrument :
 ECD_P
 ClientSampleId :
 SB-COMP



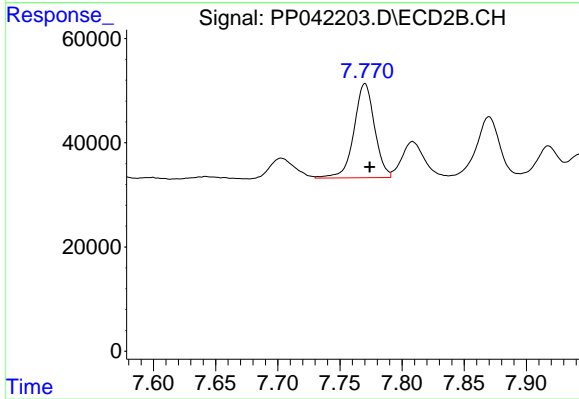
#33 AR-1260-3

R.T.: 7.284 min
 Delta R.T.: -0.003 min
 Response: 248995
 Conc: 185.82 ng/ml



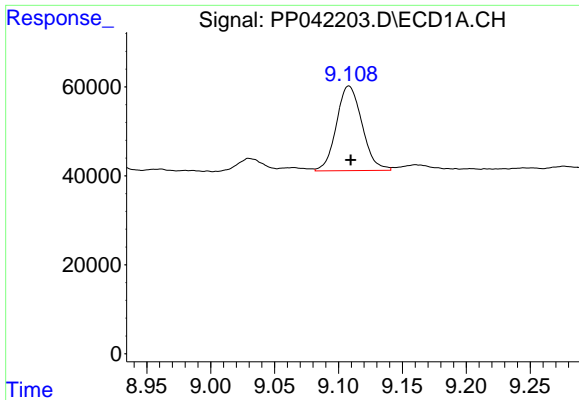
#34 AR-1260-4

R.T.: 8.786 min
 Delta R.T.: 0.000 min
 Response: 206905
 Conc: 357.34 ng/ml



#34 AR-1260-4

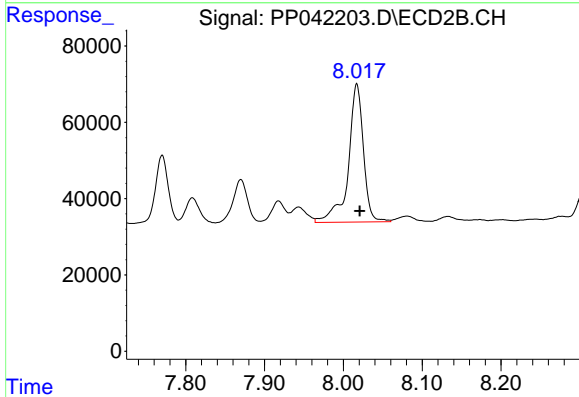
R.T.: 7.770 min
 Delta R.T.: -0.004 min
 Response: 208008
 Conc: 232.94 ng/ml



#35 AR-1260-5

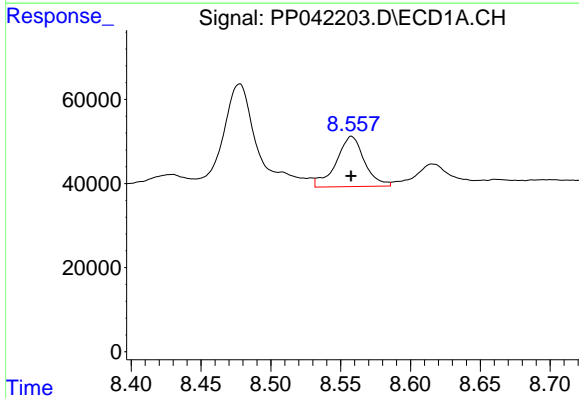
R.T.: 9.108 min
 Delta R.T.: -0.001 min
 Response: 266211
 Conc: 227.51 ng/ml

Instrument :
 ECD_P
 ClientSampleId :
 SB-COMP



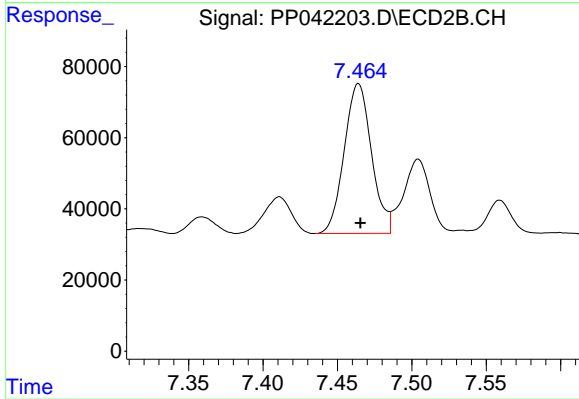
#35 AR-1260-5

R.T.: 8.017 min
 Delta R.T.: -0.004 min
 Response: 483893
 Conc: 251.43 ng/ml



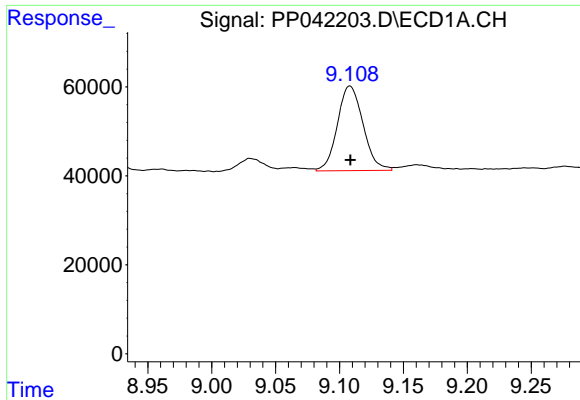
#36 AR-1262-1

R.T.: 8.558 min
 Delta R.T.: 0.000 min
 Response: 167816
 Conc: 218.68 ng/ml



#36 AR-1262-1

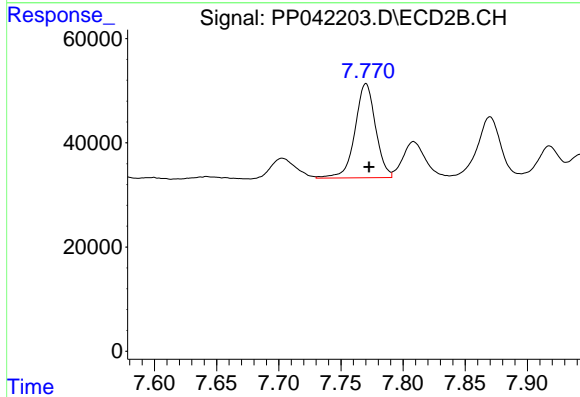
R.T.: 7.464 min
 Delta R.T.: -0.001 min
 Response: 537840
 Conc: 808.35 ng/ml



#37 AR-1262-2

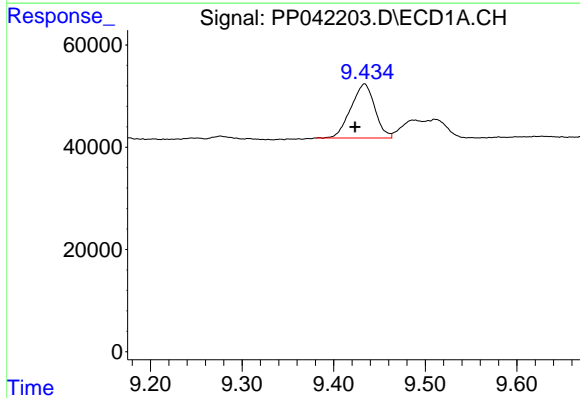
R.T.: 9.108 min
 Delta R.T.: 0.000 min
 Response: 266211
 Conc: 217.20 ng/ml

Instrument :
 ECD_P
 ClientSampleId :
 SB-COMP



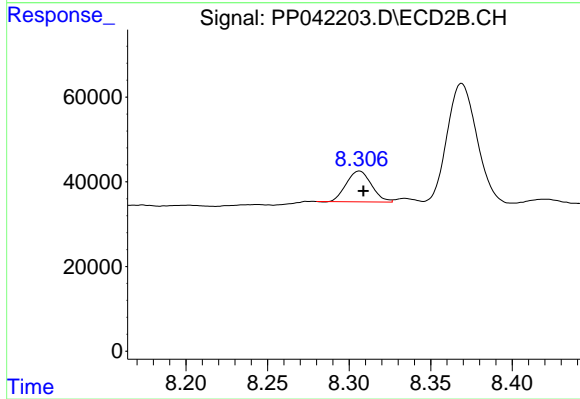
#37 AR-1262-2

R.T.: 7.770 min
 Delta R.T.: -0.003 min
 Response: 208008
 Conc: 191.78 ng/ml



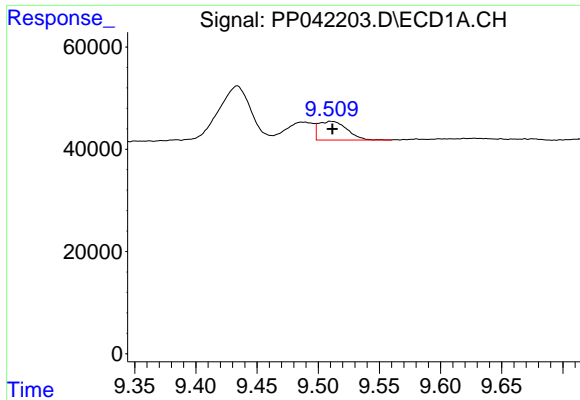
#38 AR-1262-3

R.T.: 9.434 min
 Delta R.T.: 0.010 min
 Response: 191989
 Conc: 390.58 ng/ml



#38 AR-1262-3

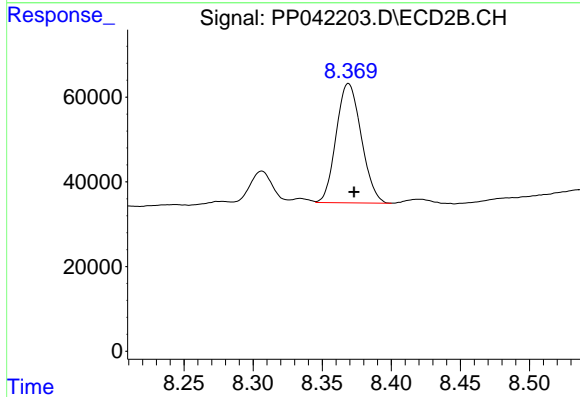
R.T.: 8.306 min
 Delta R.T.: -0.002 min
 Response: 78470
 Conc: 103.00 ng/ml



#39 AR-1262-4

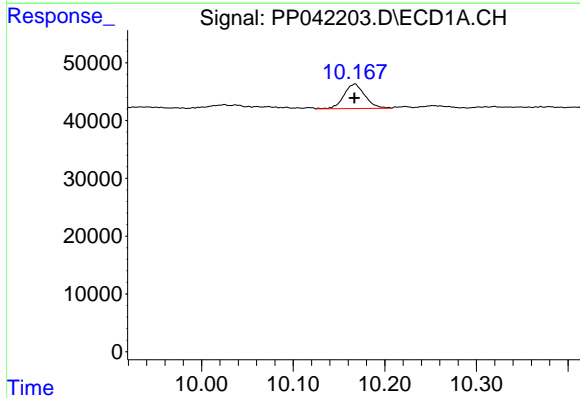
R.T.: 9.511 min
 Delta R.T.: 0.000 min
 Response: 58850
 Conc: 159.68 ng/ml

Instrument :
 ECD_P
 ClientSampleId :
 SB-COMP



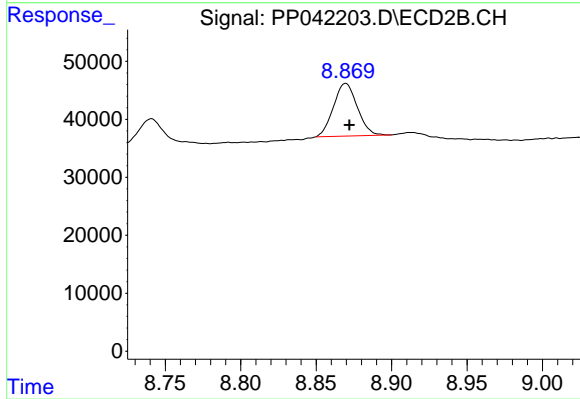
#39 AR-1262-4

R.T.: 8.369 min
 Delta R.T.: -0.004 min
 Response: 355891
 Conc: 233.64 ng/ml



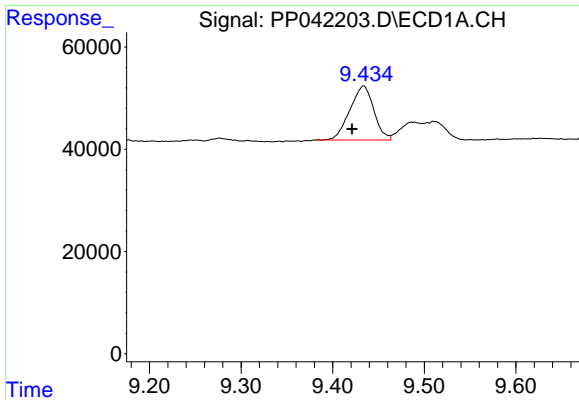
#40 AR-1262-5

R.T.: 10.167 min
 Delta R.T.: 0.000 min
 Response: 67179
 Conc: 146.67 ng/ml



#40 AR-1262-5

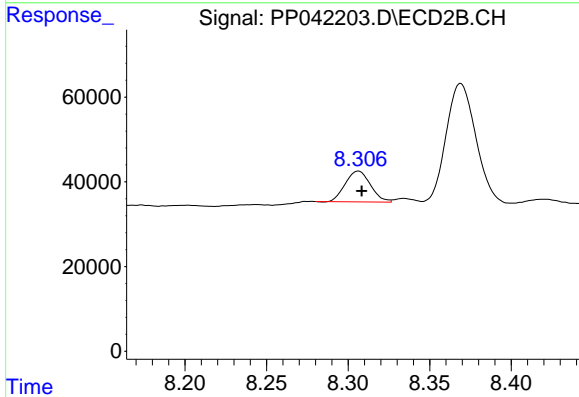
R.T.: 8.870 min
 Delta R.T.: -0.002 min
 Response: 100142
 Conc: 140.06 ng/ml



#41 AR-1268-1

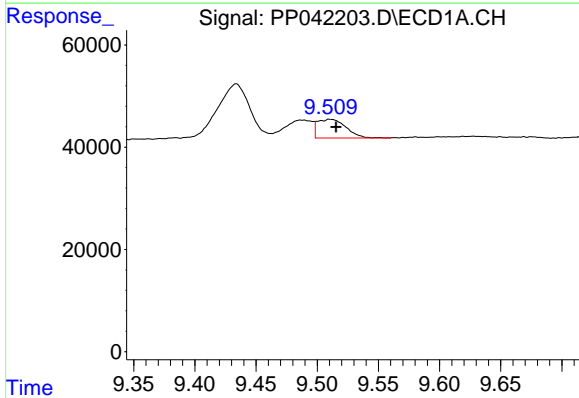
R.T.: 9.434 min
 Delta R.T.: 0.013 min
 Response: 191989
 Conc: 126.63 ng/ml

Instrument :
 ECD_P
 ClientSampleId :
 SB-COMP



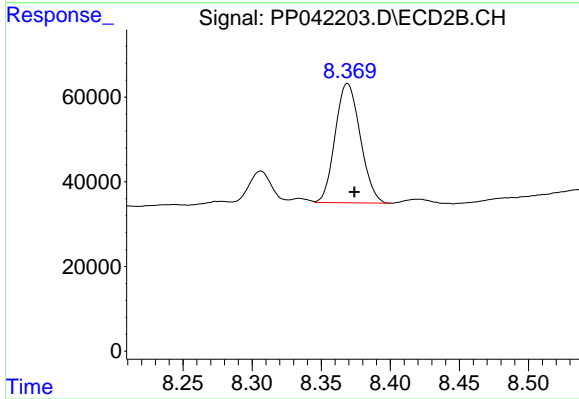
#41 AR-1268-1

R.T.: 8.306 min
 Delta R.T.: -0.002 min
 Response: 78470
 Conc: 34.68 ng/ml



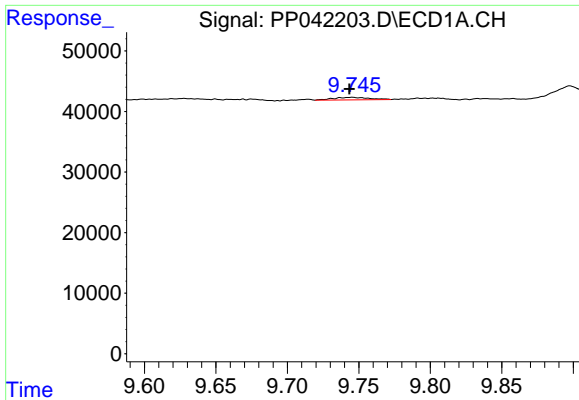
#42 AR-1268-2

R.T.: 9.511 min
 Delta R.T.: -0.005 min
 Response: 58850
 Conc: 41.47 ng/ml



#42 AR-1268-2

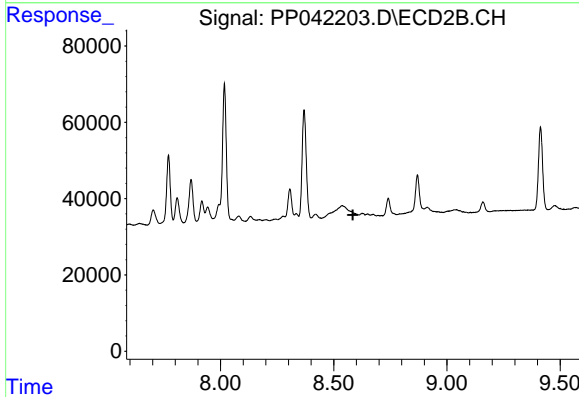
R.T.: 8.369 min
 Delta R.T.: -0.005 min
 Response: 355891
 Conc: 163.01 ng/ml



#43 AR-1268-3

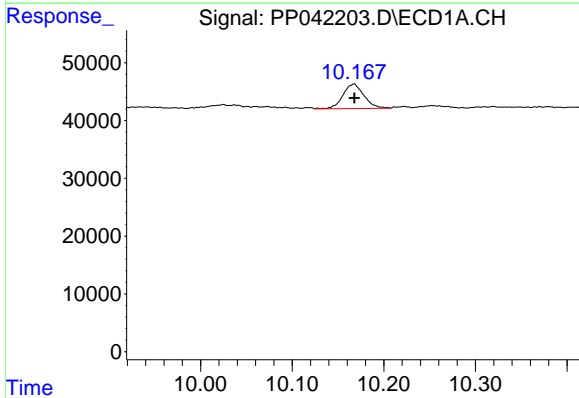
R.T.: 9.745 min
 Delta R.T.: 0.002 min
 Response: 7030
 Conc: 5.46 ng/ml

Instrument :
 ECD_P
 ClientSampleId :
 SB-COMP



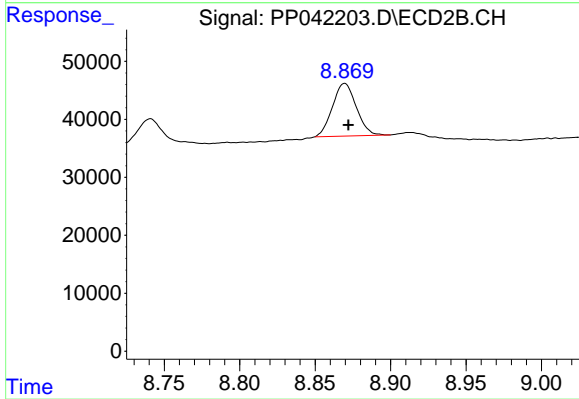
#43 AR-1268-3

R.T.: 0.000 min
 Exp R.T. : 8.584 min
 Response: 0
 Conc: N.D.



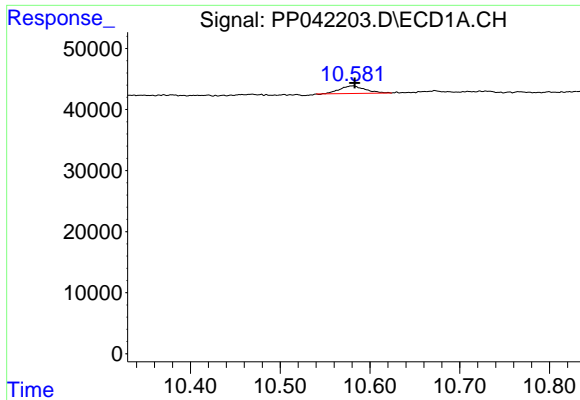
#44 AR-1268-4

R.T.: 10.167 min
 Delta R.T.: 0.000 min
 Response: 67179
 Conc: 129.64 ng/ml



#44 AR-1268-4

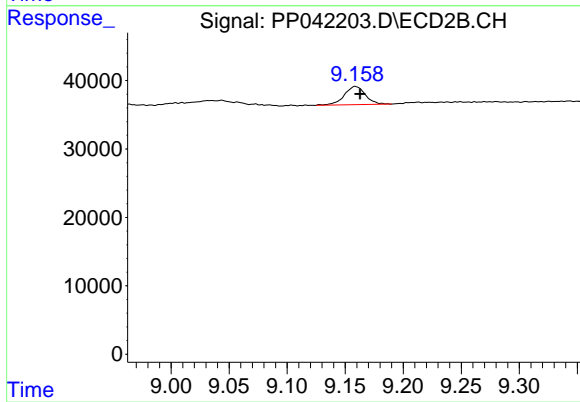
R.T.: 8.870 min
 Delta R.T.: -0.002 min
 Response: 100142
 Conc: 126.65 ng/ml



#45 AR-1268-5

R.T.: 10.581 min
Delta R.T.: -0.002 min
Response: 24703
Conc: 6.37 ng/ml

Instrument :
ECD_P
ClientSampleId :
SB-COMP



#45 AR-1268-5

R.T.: 9.159 min
Delta R.T.: -0.004 min
Response: 33989
Conc: 5.96 ng/ml