

Data Path : Z:\pestpcbsrv\HPCHEM1\ECD_P\Data\PP122421\
 Data File : PP042208.D
 Signal(s) : Signal #1: ECD1A.CH Signal #2: ECD2B.CH
 Acq On : 24 Dec 2021 21:10
 Operator : AJ\MA
 Sample : I.BLK
 Misc :
 ALS Vial : 2 Sample Multiplier: 1

Instrument :
 ECD_P
 ClientSampleId :
 I.BLK

Integration File signal 1: autoint1.e
 Integration File signal 2: autoint2.e
 Quant Time: Dec 25 04:25:24 2021
 Quant Method : Z:\pestpcbsrv\HPCHEM1\ECD_P\methods\PP122321.M
 Quant Title : GC EXTRACTABLES
 QLast Update : Fri Dec 24 23:47:53 2021
 Response via : Initial Calibration
 Integrator: ChemStation 6890 Scale Mode: Small noise peaks clipped

Volume Inj. : 2 µl
 Signal #1 Phase : ZB-MR1 Signal #2 Phase: ZB-MR2
 Signal #1 Info : 30Mx0.32mmx 0.50µ Signal #2 Info : 30M x 0.32mm x 0.25µm

Compound	RT#1	RT#2	Resp#1	Resp#2	ng/ml	ng/ml

System Monitoring Compounds						
1) SA Tetrachlo...	4.922	4.061	277705	502367	21.151	21.996
2) SA Decachlor...	10.918	9.413	328718	403594	26.988	24.957
Target Compounds						
8) L2 AR-1221-1	5.157	0.000	7353	0	46.402	N.D. #
10) L2 AR-1221-3	0.000	4.502	0	20354	N.D.	29.264 #
11) L3 AR-1232-1	0.000	4.502	0	20354	N.D.	34.813 #
20) L4 AR-1242-5	0.000	6.235f	0	41481	N.D.	69.975 #
24) L5 AR-1248-4	7.143f	5.845	8887	-6325	19.599	N.D. #
25) L5 AR-1248-5	0.000	6.235f	0	41481	N.D.	50.079 #
26) L6 AR-1254-1	7.143	6.235f	8887	41481	17.826	33.164 #
28) L6 AR-1254-3	7.752	0.000	4444	0	5.760	N.D. #
29) L6 AR-1254-4	8.034f	0.000	485	0	0.872	N.D. #
38) L8 AR-1262-3	0.000	8.334f	0	37249	N.D.	48.892 #
41) L9 AR-1268-1	0.000	8.334f	0	37249	N.D.	16.461 #

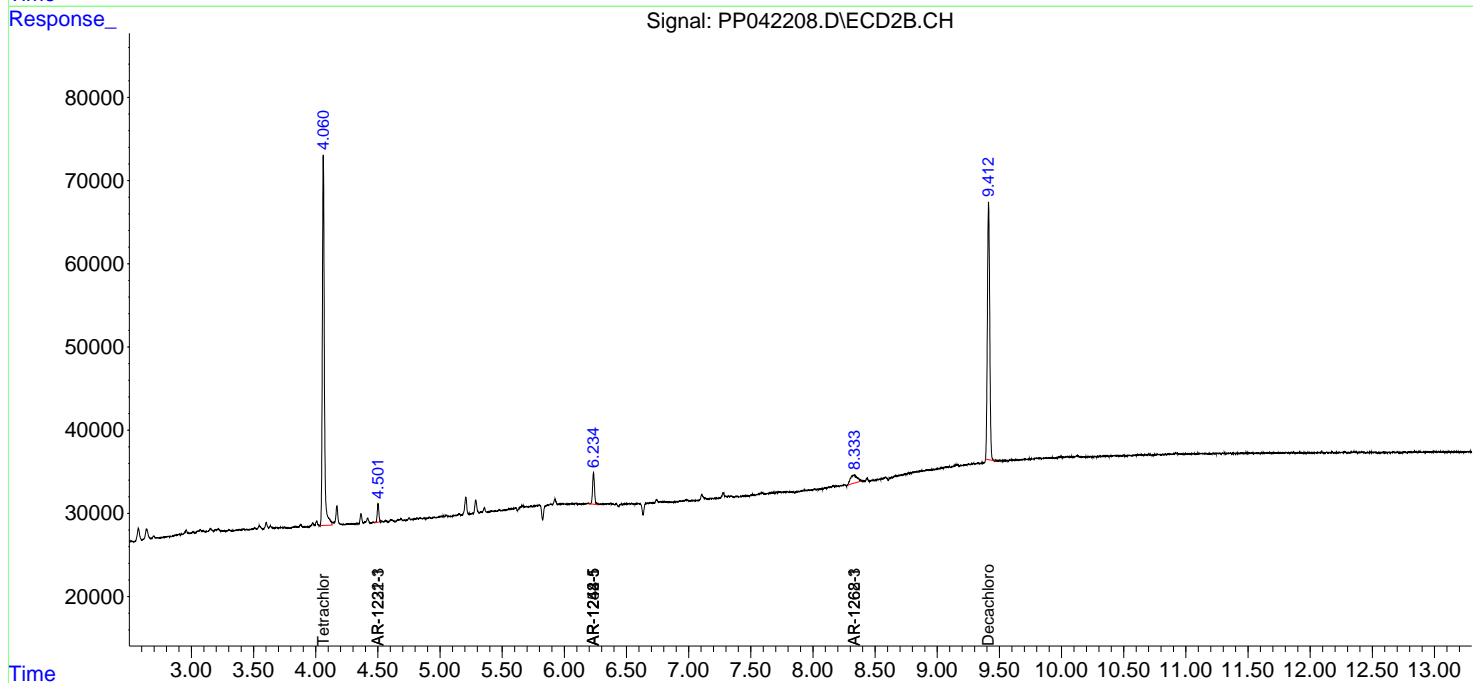
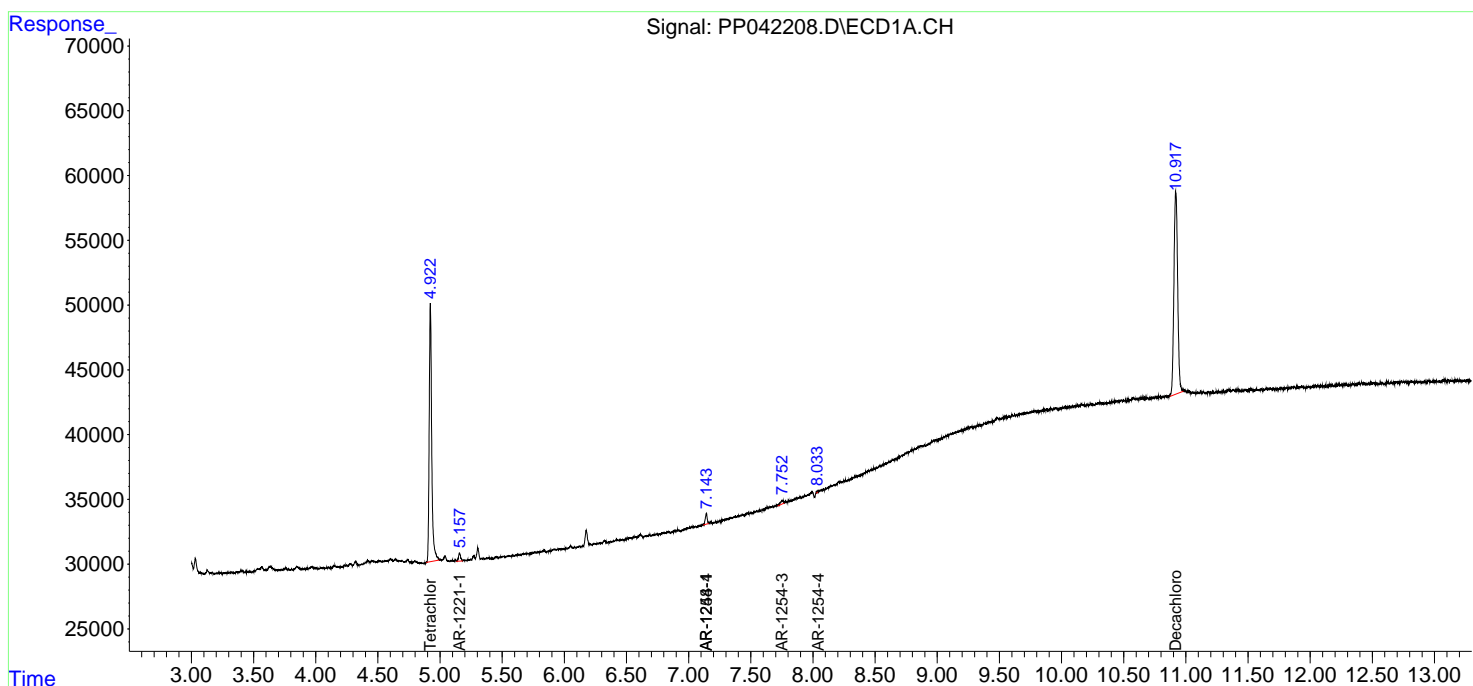
(f)=RT Delta > 1/2 Window (#)=Amounts differ by > 25% (m)=manual int.

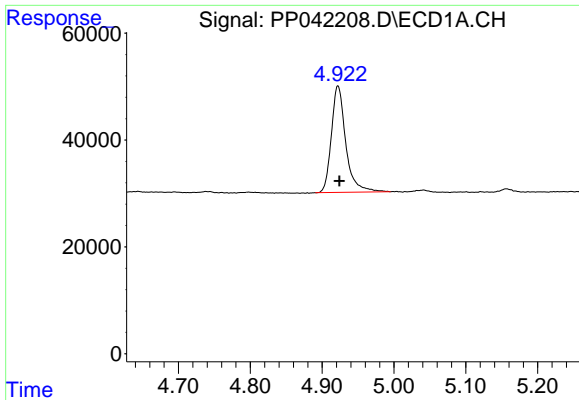
Data Path : Z:\pestpcbsrv\HPCHEM1\ECD_P\Data\PP122421\
 Data File : PP042208.D
 Signal(s) : Signal #1: ECD1A.CH Signal #2: ECD2B.CH
 Acq On : 24 Dec 2021 21:10
 Operator : AJ\MA
 Sample : I.BLK
 Misc :
 ALS Vial : 2 Sample Multiplier: 1

Instrument :
 ECD_P
 ClientSampleId :
 I.BLK

Integration File signal 1: autoint1.e
 Integration File signal 2: autoint2.e
 Quant Time: Dec 25 04:25:24 2021
 Quant Method : Z:\pestpcbsrv\HPCHEM1\ECD_P\methods\PP122321.M
 Quant Title : GC EXTRACTABLES
 QLast Update : Fri Dec 24 23:47:53 2021
 Response via : Initial Calibration
 Integrator: ChemStation 6890 Scale Mode: Small noise peaks clipped

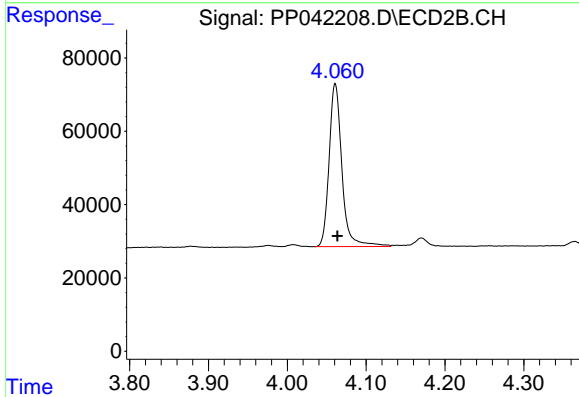
Volume Inj. : 2 µl
 Signal #1 Phase : ZB-MR1 Signal #2 Phase: ZB-MR2
 Signal #1 Info : 30Mx0.32mmx 0.50µ Signal #2 Info : 30M x 0.32mm x 0.25µm



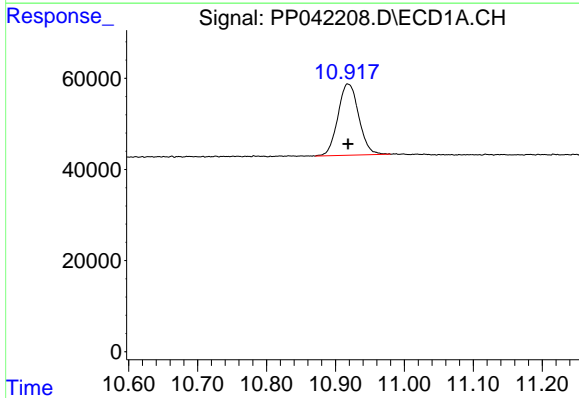


#1 Tetrachloro-m-xylene
 R.T.: 4.922 min
 Delta R.T.: -0.002 min
 Response: 277705
 Conc: 21.15 ng/ml

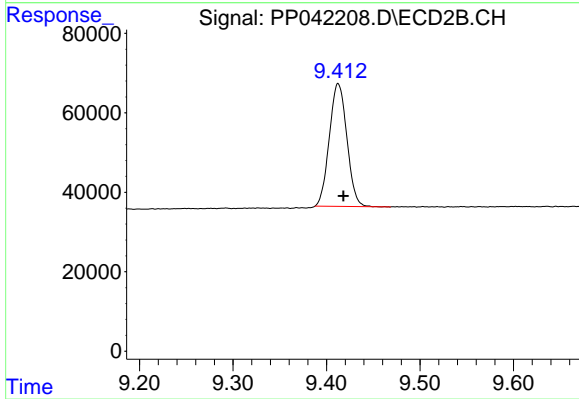
Instrument :
 ECD_P
 ClientSampleId :
 I.BLK



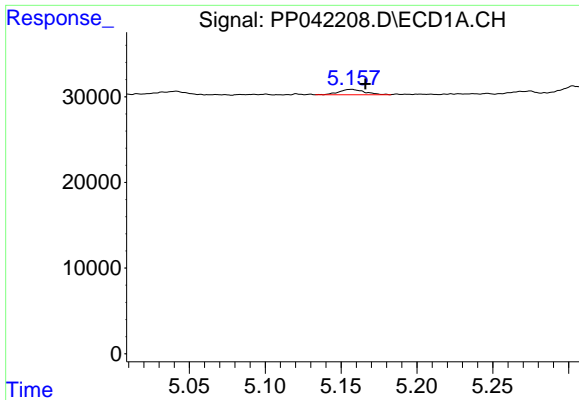
#1 Tetrachloro-m-xylene
 R.T.: 4.061 min
 Delta R.T.: -0.003 min
 Response: 502367
 Conc: 22.00 ng/ml



#2 Decachlorobiphenyl
 R.T.: 10.918 min
 Delta R.T.: 0.000 min
 Response: 328718
 Conc: 26.99 ng/ml



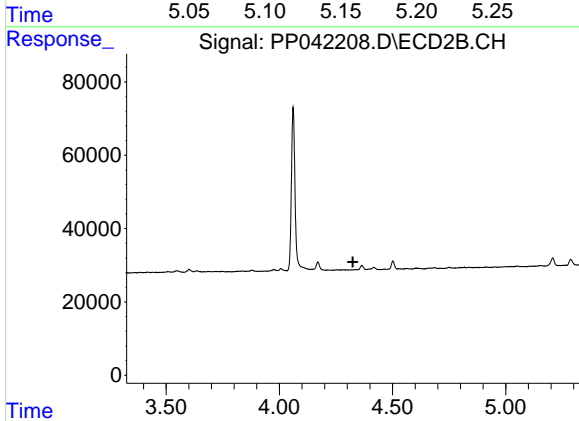
#2 Decachlorobiphenyl
 R.T.: 9.413 min
 Delta R.T.: -0.005 min
 Response: 403594
 Conc: 24.96 ng/ml



#8 AR-1221-1

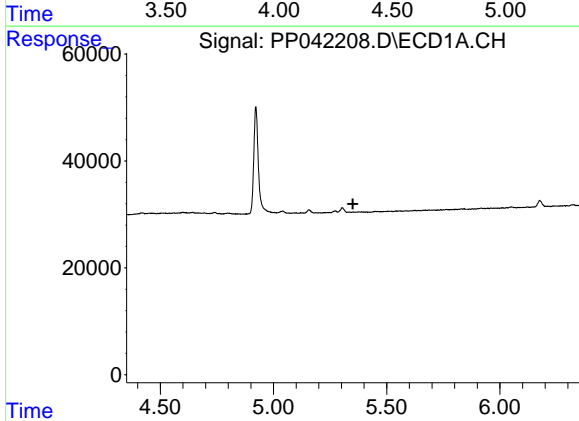
R.T.: 5.157 min
 Delta R.T.: -0.009 min
 Response: 7353
 Conc: 46.40 ng/ml

Instrument :
 ECD_P
 ClientSampleId :
 I.BLK



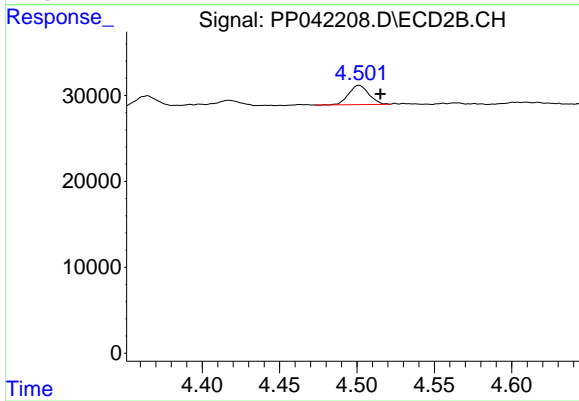
#8 AR-1221-1

R.T.: 0.000 min
 Exp R.T. : 4.325 min
 Response: 0
 Conc: N.D.



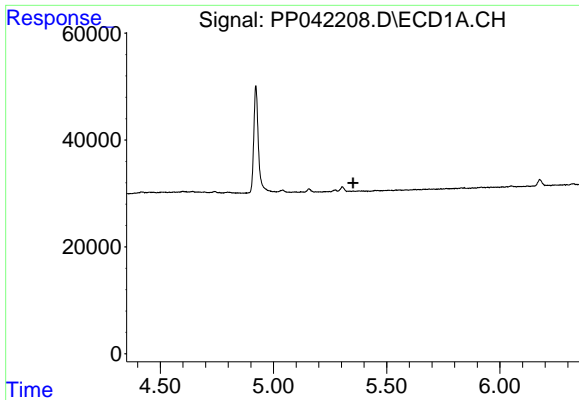
#10 AR-1221-3

R.T.: 0.000 min
 Exp R.T. : 5.351 min
 Response: 0
 Conc: N.D.



#10 AR-1221-3

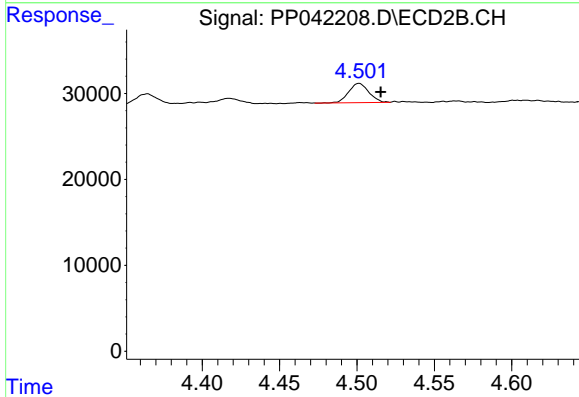
R.T.: 4.502 min
 Delta R.T.: -0.014 min
 Response: 20354
 Conc: 29.26 ng/ml



#11 AR-1232-1

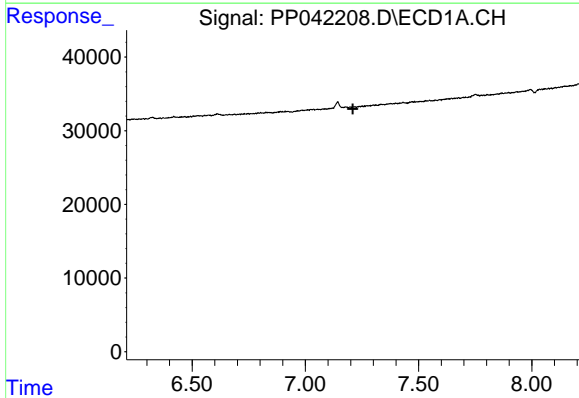
R.T.: 0.000 min
 Exp R.T.: 5.351 min
 Response: 0
 Conc: N.D.

Instrument :
 ECD_P
 ClientSampleId :
 I.BLK



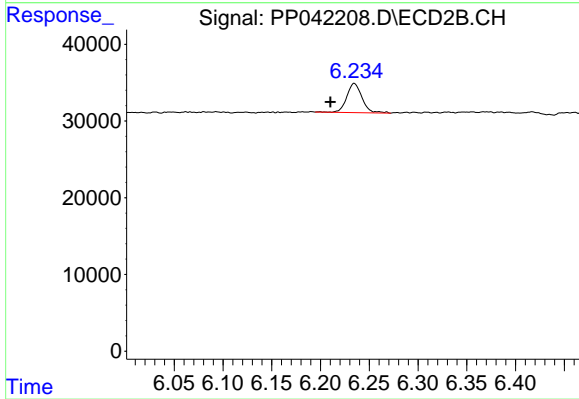
#11 AR-1232-1

R.T.: 4.502 min
 Delta R.T.: -0.014 min
 Response: 20354
 Conc: 34.81 ng/ml



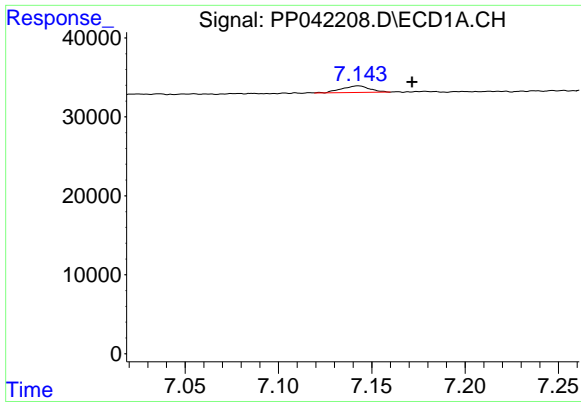
#20 AR-1242-5

R.T.: 0.000 min
 Exp R.T.: 7.210 min
 Response: 0
 Conc: N.D.



#20 AR-1242-5

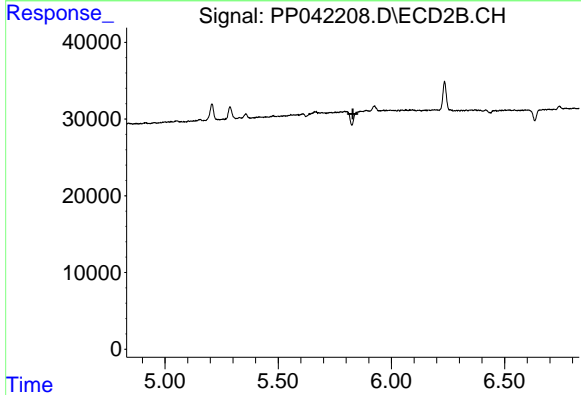
R.T.: 6.235 min
 Delta R.T.: 0.024 min
 Response: 41481
 Conc: 69.98 ng/ml



#24 AR-1248-4

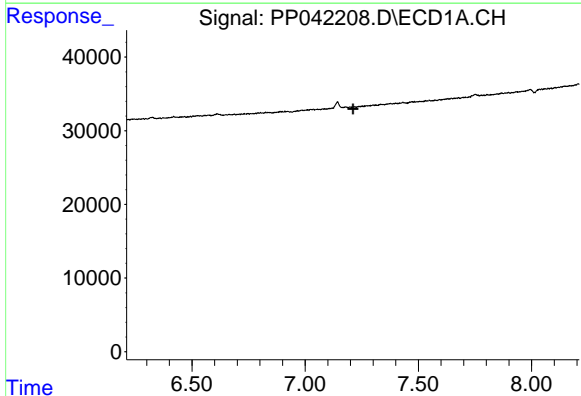
R.T.: 7.143 min
 Delta R.T.: -0.029 min
 Response: 8887
 Conc: 19.60 ng/ml

Instrument :
 ECD_P
 ClientSampleId :
 I.BLK



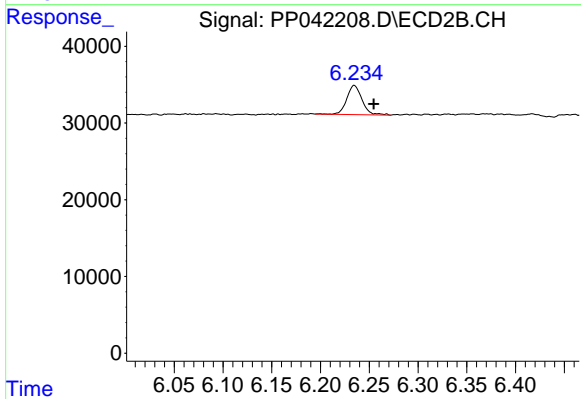
#24 AR-1248-4

R.T.: 5.845 min
 Delta R.T.: 0.015 min
 Response: -6325
 Conc: N.D.



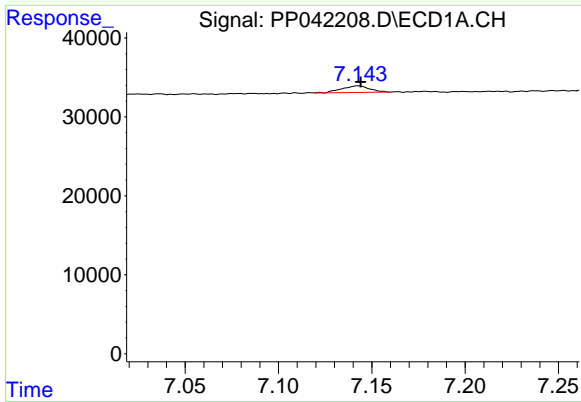
#25 AR-1248-5

R.T.: 0.000 min
 Exp R.T. : 7.211 min
 Response: 0
 Conc: N.D.



#25 AR-1248-5

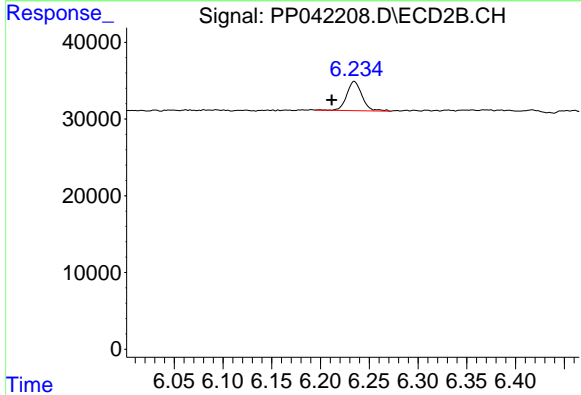
R.T.: 6.235 min
 Delta R.T.: -0.020 min
 Response: 41481
 Conc: 50.08 ng/ml



#26 AR-1254-1

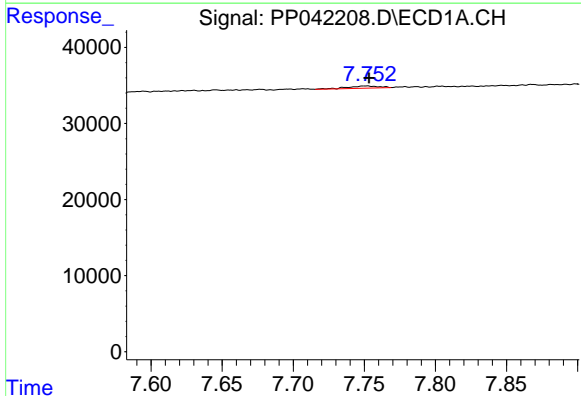
R.T.: 7.143 min
 Delta R.T.: -0.001 min
 Response: 8887
 Conc: 17.83 ng/ml

Instrument :
 ECD_P
 ClientSampleId :
 I.BLK



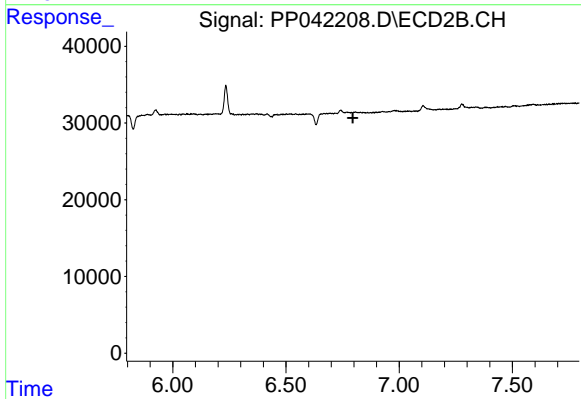
#26 AR-1254-1

R.T.: 6.235 min
 Delta R.T.: 0.023 min
 Response: 41481
 Conc: 33.16 ng/ml



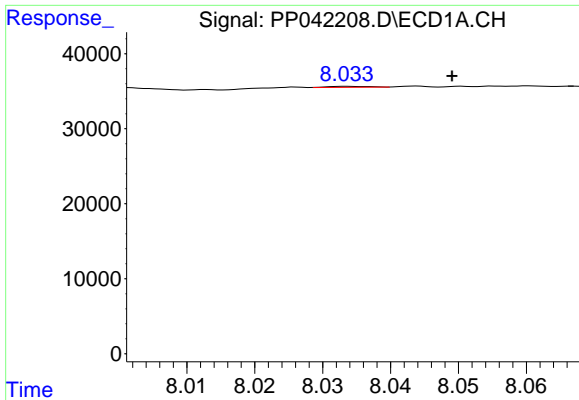
#28 AR-1254-3

R.T.: 7.752 min
 Delta R.T.: -0.001 min
 Response: 4444
 Conc: 5.76 ng/ml



#28 AR-1254-3

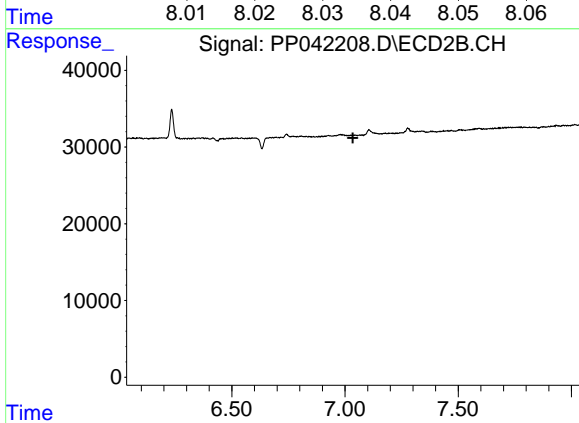
R.T.: 0.000 min
 Exp R.T.: 6.795 min
 Response: 0
 Conc: N.D.



#29 AR-1254-4

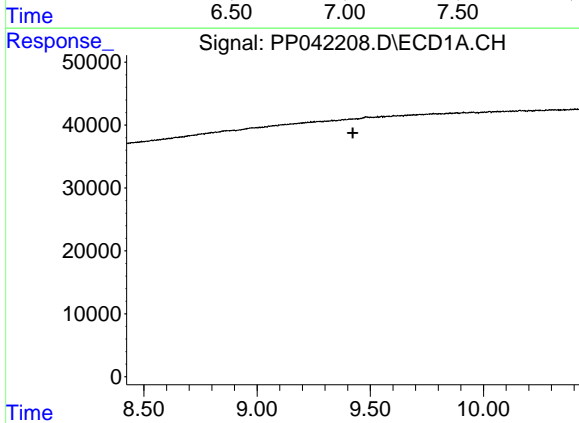
R.T.: 8.034 min
 Delta R.T.: -0.015 min
 Response: 485
 Conc: 0.87 ng/ml

Instrument :
 ECD_P
 ClientSampleId :
 I.BLK



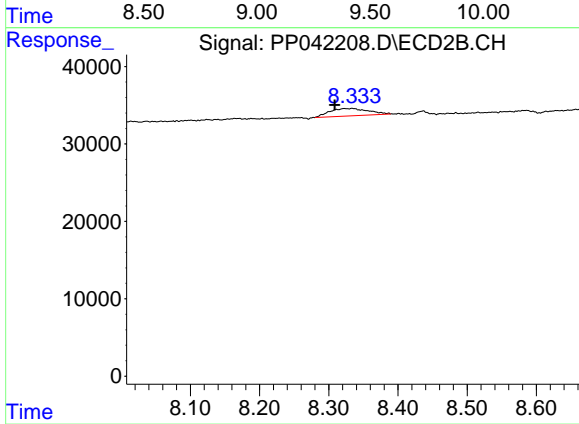
#29 AR-1254-4

R.T.: 0.000 min
 Exp R.T. : 7.035 min
 Response: 0
 Conc: N.D.



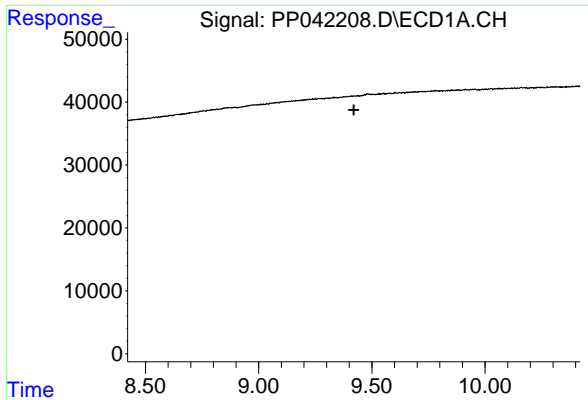
#38 AR-1262-3

R.T.: 0.000 min
 Exp R.T. : 9.423 min
 Response: 0
 Conc: N.D.



#38 AR-1262-3

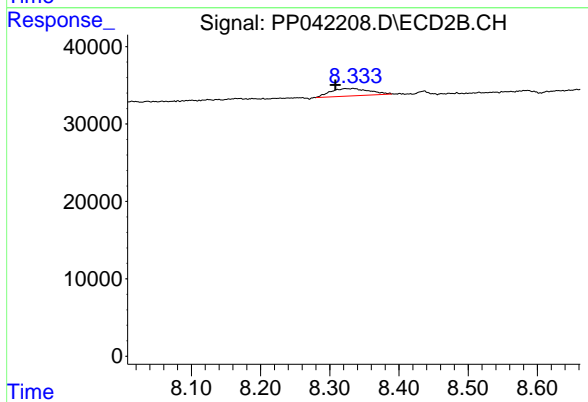
R.T.: 8.334 min
 Delta R.T.: 0.025 min
 Response: 37249
 Conc: 48.89 ng/ml



#41 AR-1268-1

R.T.: 0.000 min
 Exp R.T.: 9.421 min
 Response: 0
 Conc: N.D.

Instrument :
 ECD_P
 ClientSampleId :
 I.BLK



#41 AR-1268-1

R.T.: 8.334 min
 Delta R.T.: 0.025 min
 Response: 37249
 Conc: 16.46 ng/ml