

Data Path : Z:\pestpcbsrv\HPCHEM1\ECD_P\Data\PP122618\
 Data File : PP028582.D
 Signal(s) : Signal #1: ECD1A.CH Signal #2: ECD2B.CH
 Acq On : 26 Dec 2018 16:52
 Operator : EI\MA
 Sample : I.BLK
 Misc :
 ALS Vial : 2 Sample Multiplier: 1

Instrument :
 ECD_P
 ClientSampleId :
 I.BLK

Integration File signal 1: autoint1.e
 Integration File signal 2: autoint2.e
 Quant Time: Dec 26 17:25:24 2018
 Quant Method : Z:\pestpcbsrv\HPCHEM1\ECD_P\methods\PP120718.M
 Quant Title : 8080.M
 QLast Update : Fri Dec 07 14:01:32 2018
 Response via : Initial Calibration
 Integrator: ChemStation 6890 Scale Mode: Large solvent peaks clipped

Volume Inj. : 2 µl
 Signal #1 Phase : ZB-CLPesticides-1 Signal #2 Phase: ZB-CLPesticides-2
 Signal #1 Info : 30M x 0.32mm x0.5 Signal #2 Info : 30M x 0.32mm x 0.25µm

Compound	RT#1	RT#2	Resp#1	Resp#2	ng/ml	ng/ml
----------	------	------	--------	--------	-------	-------

 System Monitoring Compounds

4) S	2,4-DCAA	12.104	12.208	84395001	142.2E6	323.282	317.594
------	----------	--------	--------	----------	---------	---------	---------

Target Compounds

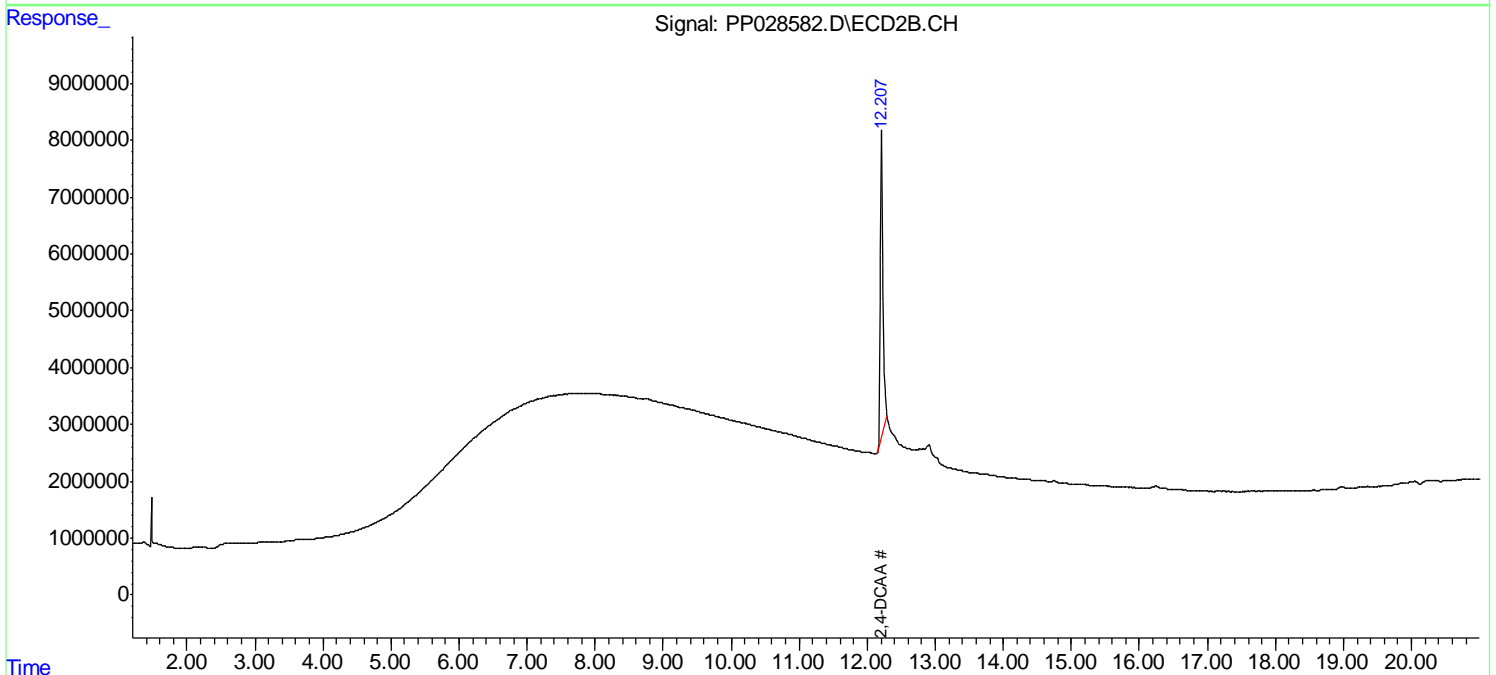
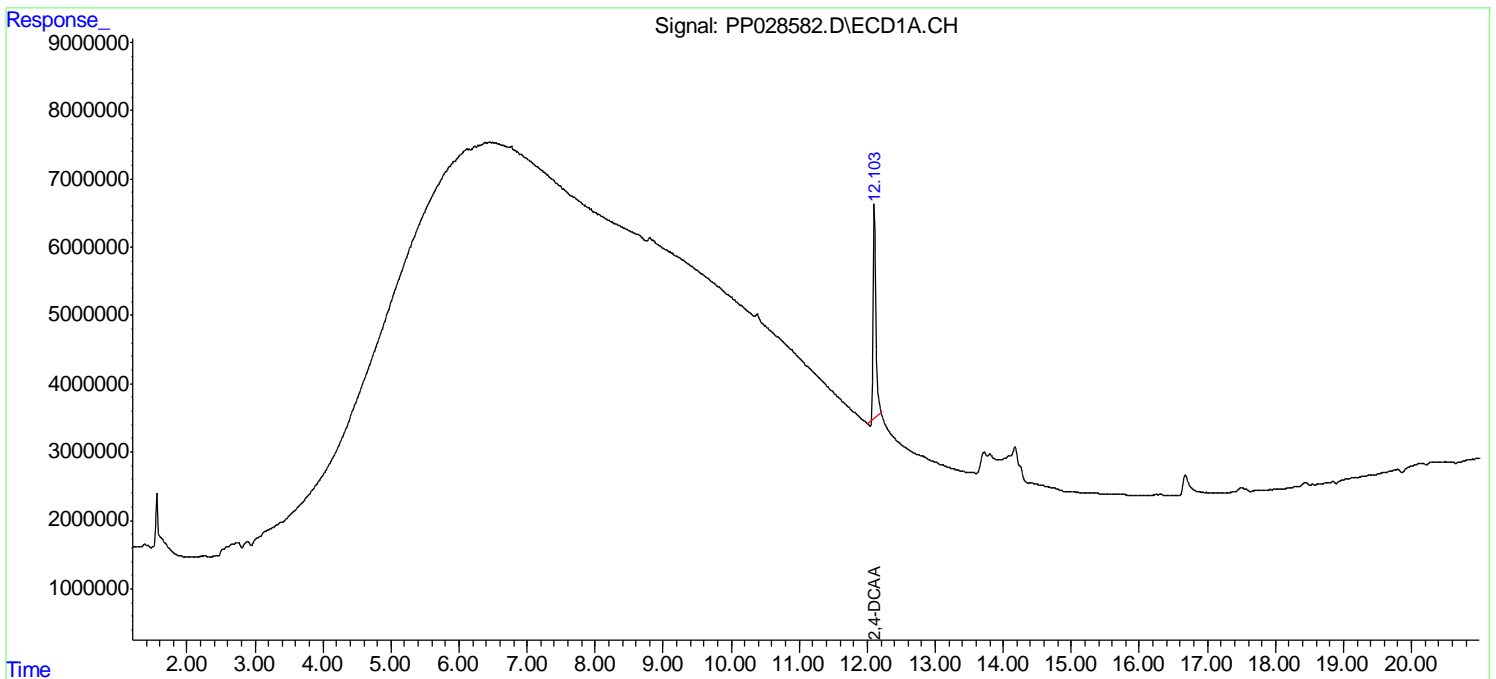
(f)=RT Delta > 1/2 Window (#)=Amounts differ by > 25% (m)=manual int.

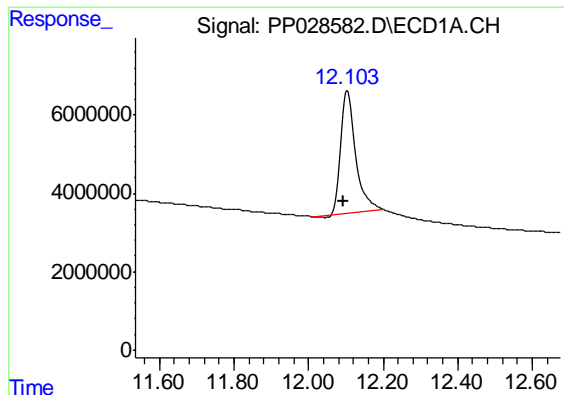
Data Path : Z:\pestpcbsrv\HPCHEM1\ECD_P\Data\PP122618\
 Data File : PP028582.D
 Signal(s) : Signal #1: ECD1A.CH Signal #2: ECD2B.CH
 Acq On : 26 Dec 2018 16:52
 Operator : EI\MA
 Sample : I.BLK
 Misc :
 ALS Vial : 2 Sample Multiplier: 1

Instrument :
 ECD_P
 ClientSampled :
 I.BLK

Integration File signal 1: autoint1.e
 Integration File signal 2: autoint2.e
 Quant Time: Dec 26 17:25:24 2018
 Quant Method : Z:\pestpcbsrv\HPCHEM1\ECD_P\methods\PP120718.M
 Quant Title : 8080.M
 QLast Update : Fri Dec 07 14:01:32 2018
 Response via : Initial Calibration
 Integrator: ChemStation 6890 Scale Mode: Large solvent peaks clipped

Volume Inj. : 2 µl
 Signal #1 Phase : ZB-CLPesticides-1 Signal #2 Phase: ZB-CLPesticides-2
 Signal #1 Info : 30M x 0.32mm x0.5 Signal #2 Info : 30M x 0.32mm x 0.25µm

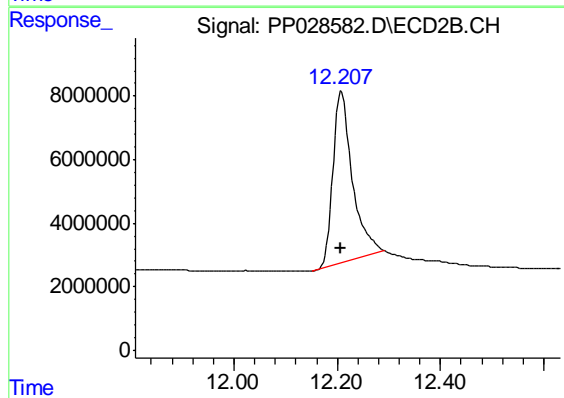




#4 2,4-DCAA

R.T.: 12.104 min
Delta R.T.: 0.011 min
Response: 84395001
Conc: 323.28 ng/ml

Instrument :
ECD_P
ClientSampleId :
I.BLK



#4 2,4-DCAA

R.T.: 12.208 min
Delta R.T.: 0.002 min
Response: 142234797
Conc: 317.59 ng/ml