

Data Path : Z:\pestpcbsrv\HPCHEM1\ECD_P\Data\PP122721\
 Data File : PP042224.D
 Signal(s) : Signal #1: ECD1A.CH Signal #2: ECD2B.CH
 Acq On : 27 Dec 2021 11:00
 Operator : AJ\MA
 Sample : AR1242CCC500
 Misc :
 ALS Vial : 4 Sample Multiplier: 1

Instrument :
 ECD_P
 ClientSampleId :
 AR1242CCC500

Integration File signal 1: autoint1.e
 Integration File signal 2: autoint2.e
 Quant Time: Dec 28 03:03:51 2021
 Quant Method : Z:\pestpcbsrv\HPCHEM1\ECD_P\methods\PP122321.M
 Quant Title : GC EXTRACTABLES
 QLast Update : Fri Dec 24 23:47:53 2021
 Response via : Initial Calibration
 Integrator: ChemStation 6890 Scale Mode: Small noise peaks clipped

Volume Inj. : 2 µl
 Signal #1 Phase : ZB-MR1 Signal #2 Phase: ZB-MR2
 Signal #1 Info : 30Mx0.32mmx 0.50µ Signal #2 Info : 30M x 0.32mm x 0.25µm

Compound	RT#1	RT#2	Resp#1	Resp#2	ng/ml	ng/ml

System Monitoring Compounds						
1) SA Tetrachlo...	4.924	4.060	550853	994422	41.954	43.540
2) SA Decachlor...	10.918	9.410	648537	785506	53.245	48.573
Target Compounds						
16) L4 AR-1242-1	6.233	5.328	134086	298938	411.217	439.026
17) L4 AR-1242-2	6.257	5.349	199482	404564	417.965	434.388
18) L4 AR-1242-3	6.323	5.543	128952	226423	430.550	428.462
19) L4 AR-1242-4	6.428	5.639	107620	224408	439.254	443.527
20) L4 AR-1242-5	7.211	6.206	109620	268072	421.471	452.215

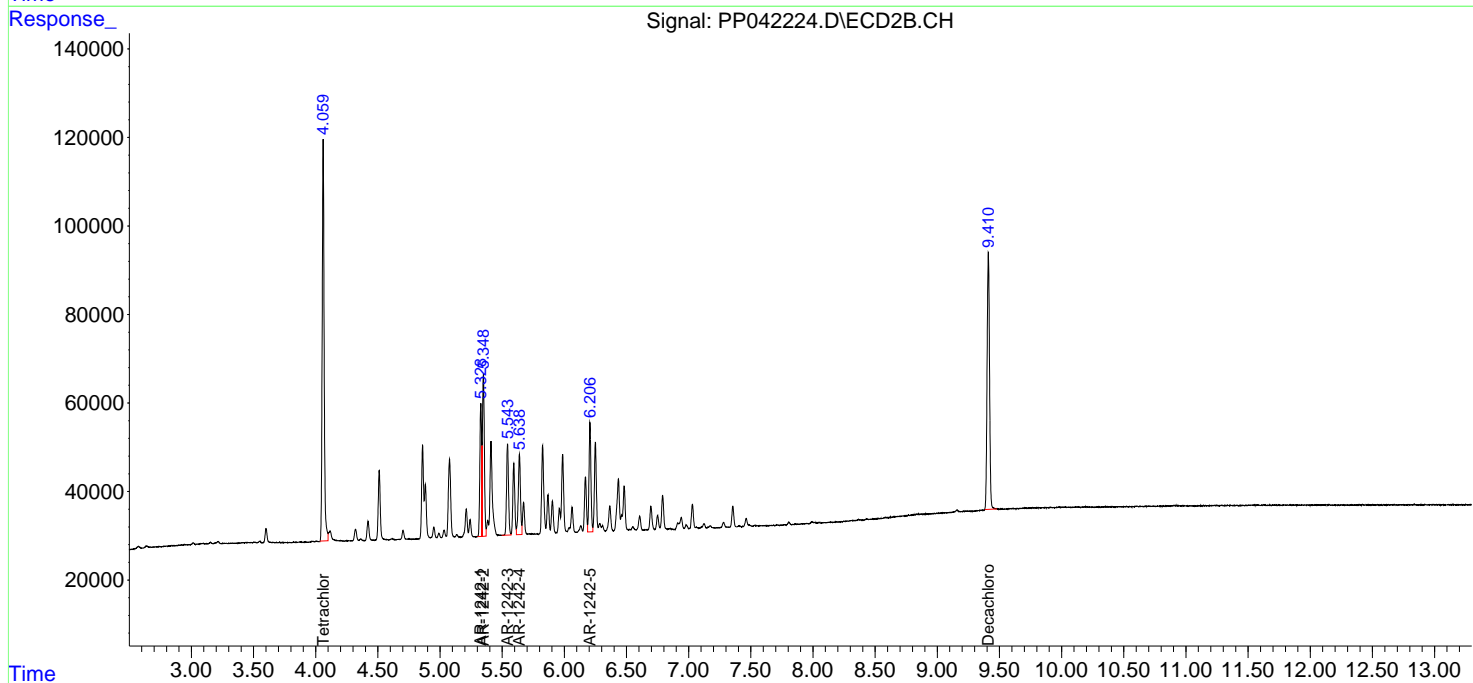
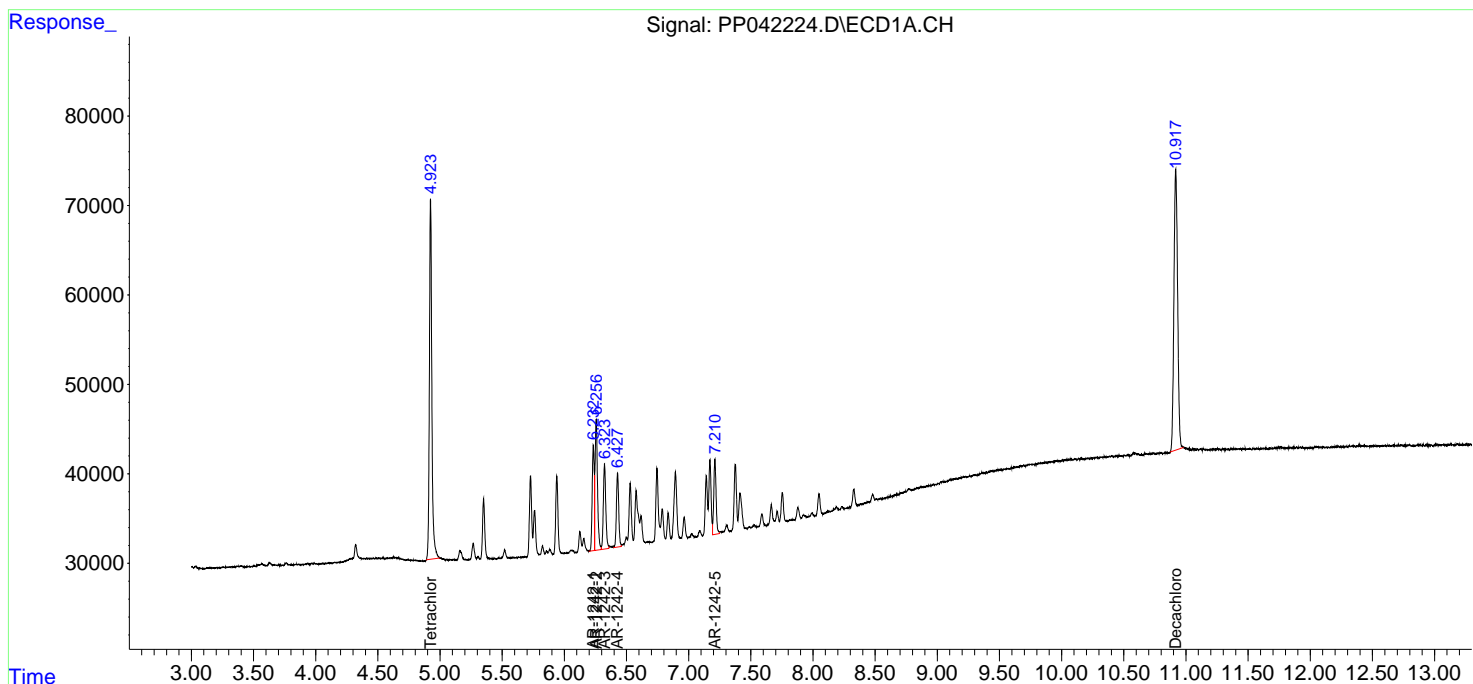
(f)=RT Delta > 1/2 Window (#)=Amounts differ by > 25% (m)=manual int.

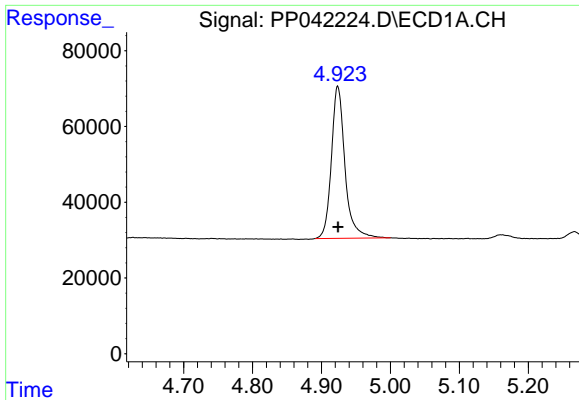
Data Path : Z:\pestpcbsrv\HPCHEM1\ECD_P\Data\PP122721\
 Data File : PP042224.D
 Signal(s) : Signal #1: ECD1A.CH Signal #2: ECD2B.CH
 Acq On : 27 Dec 2021 11:00
 Operator : AJ\MA
 Sample : AR1242CCC500
 Misc :
 ALS Vial : 4 Sample Multiplier: 1

Instrument :
 ECD_P
 ClientSampleId :
 AR1242CCC500

Integration File signal 1: autoint1.e
 Integration File signal 2: autoint2.e
 Quant Time: Dec 28 03:03:51 2021
 Quant Method : Z:\pestpcbsrv\HPCHEM1\ECD_P\methods\PP122321.M
 Quant Title : GC EXTRACTABLES
 QLast Update : Fri Dec 24 23:47:53 2021
 Response via : Initial Calibration
 Integrator: ChemStation 6890 Scale Mode: Small noise peaks clipped

Volume Inj. : 2 µl
 Signal #1 Phase : ZB-MR1 Signal #2 Phase: ZB-MR2
 Signal #1 Info : 30Mx0.32mmx 0.50µ Signal #2 Info : 30M x 0.32mm x 0.25µm

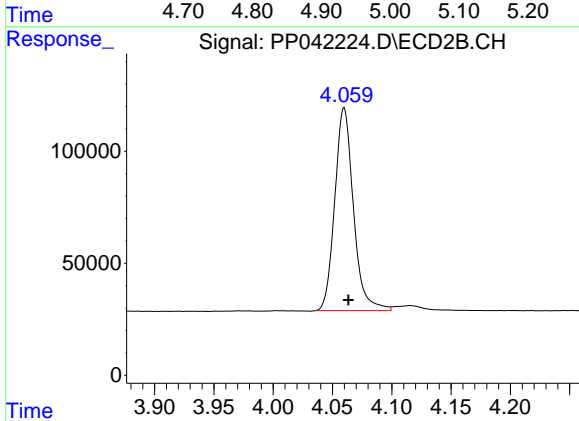




#1 Tetrachloro-m-xylene

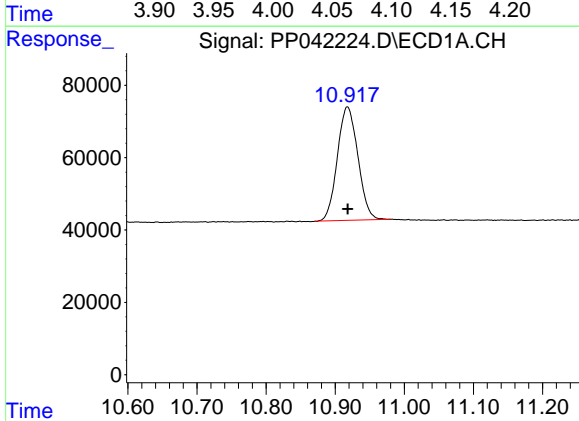
R.T.: 4.924 min
 Delta R.T.: 0.000 min
 Response: 550853
 Conc: 41.95 ng/ml

Instrument :
 ECD_P
 ClientSampleId :
 AR1242CCC500



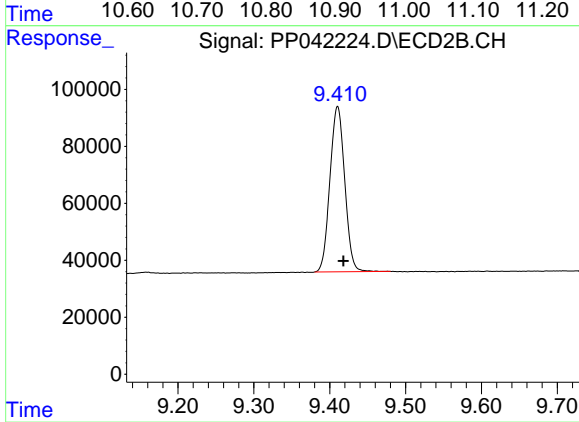
#1 Tetrachloro-m-xylene

R.T.: 4.060 min
 Delta R.T.: -0.004 min
 Response: 994422
 Conc: 43.54 ng/ml



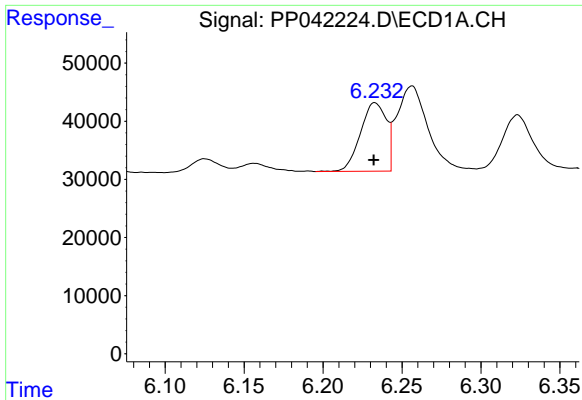
#2 Decachlorobiphenyl

R.T.: 10.918 min
 Delta R.T.: 0.000 min
 Response: 648537
 Conc: 53.24 ng/ml



#2 Decachlorobiphenyl

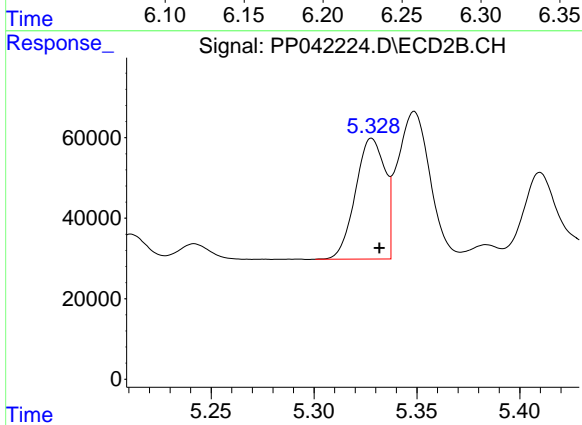
R.T.: 9.410 min
 Delta R.T.: -0.008 min
 Response: 785506
 Conc: 48.57 ng/ml



#16 AR-1242-1

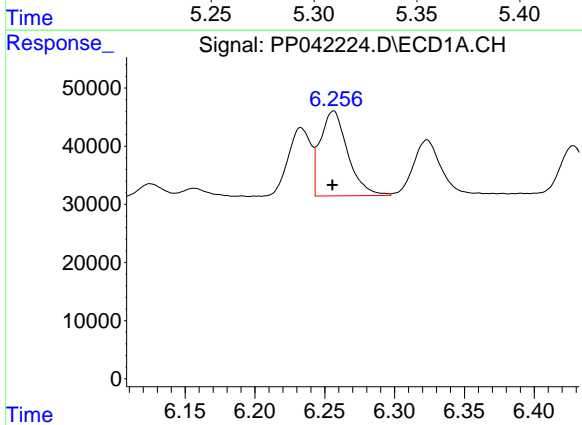
R.T.: 6.233 min
 Delta R.T.: 0.000 min
 Response: 134086
 Conc: 411.22 ng/ml

Instrument :
 ECD_P
 ClientSampleId :
 AR1242CCC500



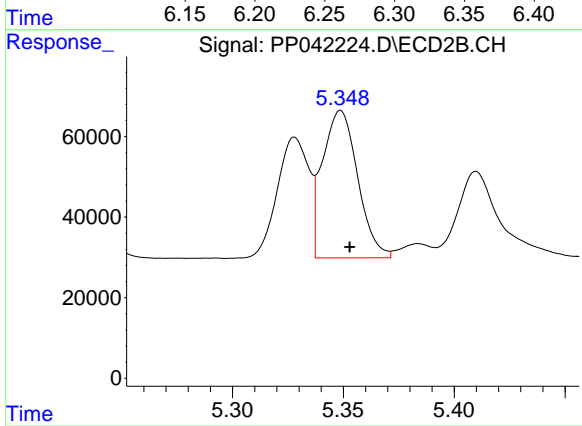
#16 AR-1242-1

R.T.: 5.328 min
 Delta R.T.: -0.004 min
 Response: 298938
 Conc: 439.03 ng/ml



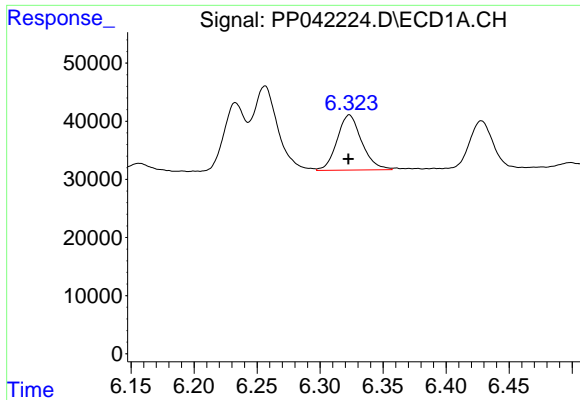
#17 AR-1242-2

R.T.: 6.257 min
 Delta R.T.: 0.000 min
 Response: 199482
 Conc: 417.96 ng/ml



#17 AR-1242-2

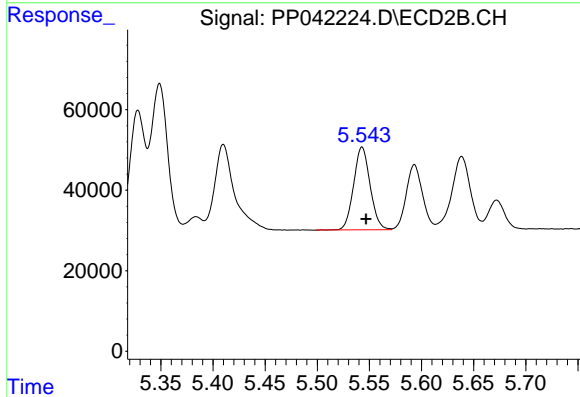
R.T.: 5.349 min
 Delta R.T.: -0.004 min
 Response: 404564
 Conc: 434.39 ng/ml



#18 AR-1242-3

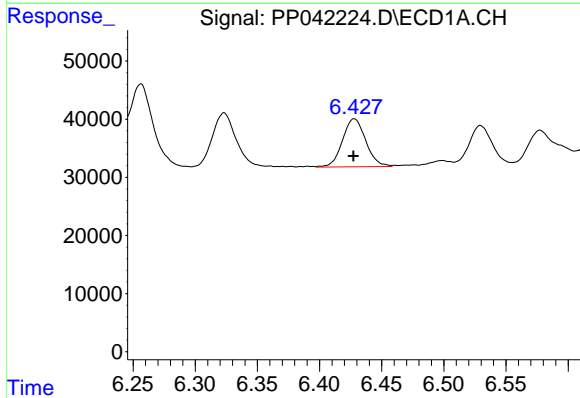
R.T.: 6.323 min
 Delta R.T.: 0.000 min
 Response: 128952
 Conc: 430.55 ng/ml

Instrument :
 ECD_P
 ClientSampleId :
 AR1242CCC500



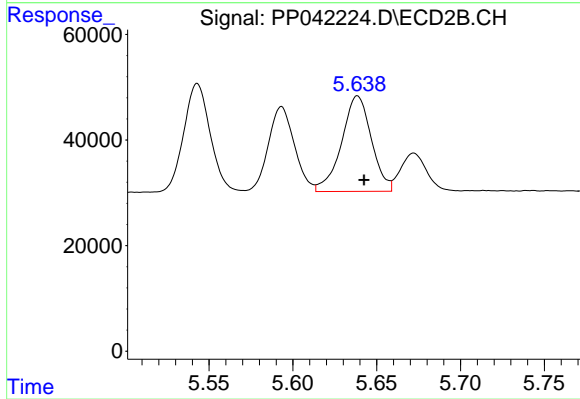
#18 AR-1242-3

R.T.: 5.543 min
 Delta R.T.: -0.004 min
 Response: 226423
 Conc: 428.46 ng/ml



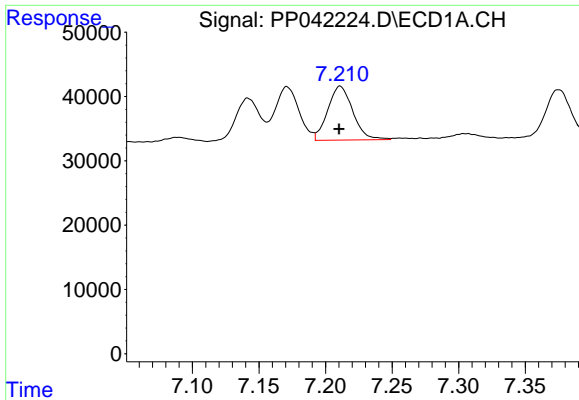
#19 AR-1242-4

R.T.: 6.428 min
 Delta R.T.: 0.000 min
 Response: 107620
 Conc: 439.25 ng/ml



#19 AR-1242-4

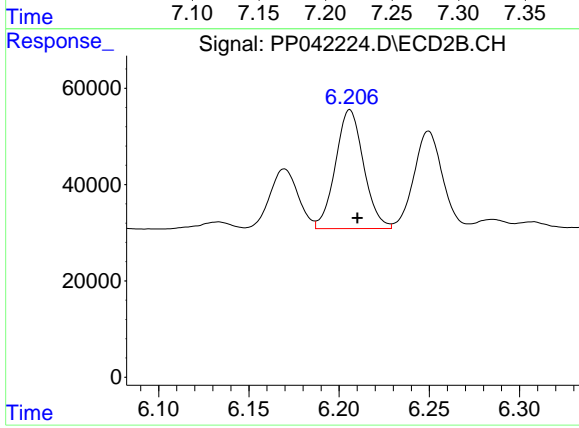
R.T.: 5.639 min
 Delta R.T.: -0.004 min
 Response: 224408
 Conc: 443.53 ng/ml



#20 AR-1242-5

R.T.: 7.211 min
Delta R.T.: 0.000 min
Response: 109620
Conc: 421.47 ng/ml

Instrument :
ECD_P
ClientSampleId :
AR1242CCC500



#20 AR-1242-5

R.T.: 6.206 min
Delta R.T.: -0.004 min
Response: 268072
Conc: 452.21 ng/ml