

Data Path : Z:\pestpcbsrv\HPCHEM1\ECD_P\Data\PP122722\
 Data File : PP054065.D
 Signal(s) : Signal #1: ECD1A.ch Signal #2: ECD2B.ch
 Acq On : 27 Dec 2022 10:07
 Operator : YP\AJ
 Sample : N6168-03
 Misc :
 ALS Vial : 8 Sample Multiplier: 1

Instrument :
 ECD_P
 ClientSampleId :
 AUD-1895

Integration File signal 1: autoint1.e
 Integration File signal 2: autoint2.e
 Quant Time: Dec 27 17:31:08 2022
 Quant Method : Z:\pestpcbsrv\HPCHEM1\ECD_P\methods\PP121322.M
 Quant Title : GC EXTRACTABLES
 QLast Update : Wed Dec 14 05:38:40 2022
 Response via : Initial Calibration
 Integrator: ChemStation

Volume Inj. : 2 µl
 Signal #1 Phase : ZB-MR1 Signal #2 Phase: ZB-MR2
 Signal #1 Info : 30Mx0.32mmx 0.50µ Signal #2 Info : 30M x 0.32mm x 0.25µm

Compound	RT#1	RT#2	Resp#1	Resp#2	ng/ml	ng/ml

System Monitoring Compounds						
1) SA Tetrachlo...	4.338	3.590	18484744	14820038	8.803	9.489
2) SA Decachlor...	10.097	8.618	3776965	2722347	2.225	1.949
Target Compounds						
26) L6 AR-1254-1	6.368	5.484	3389.3E6	2939.2E6	43737.100	44884.897
27) L6 AR-1254-2	6.589	5.632	4292.2E6	2139.5E6	36891.386	36686.309
28) L6 AR-1254-3	6.955	6.037	2916.7E6	2279.8E6	24902.117	25915.354
29) L6 AR-1254-4	7.242	6.267	1089.6E6	669.4E6	13743.641	14610.085
30) L6 AR-1254-5	7.663	6.686	485.4E6	408.9E6	4977.595	5247.207

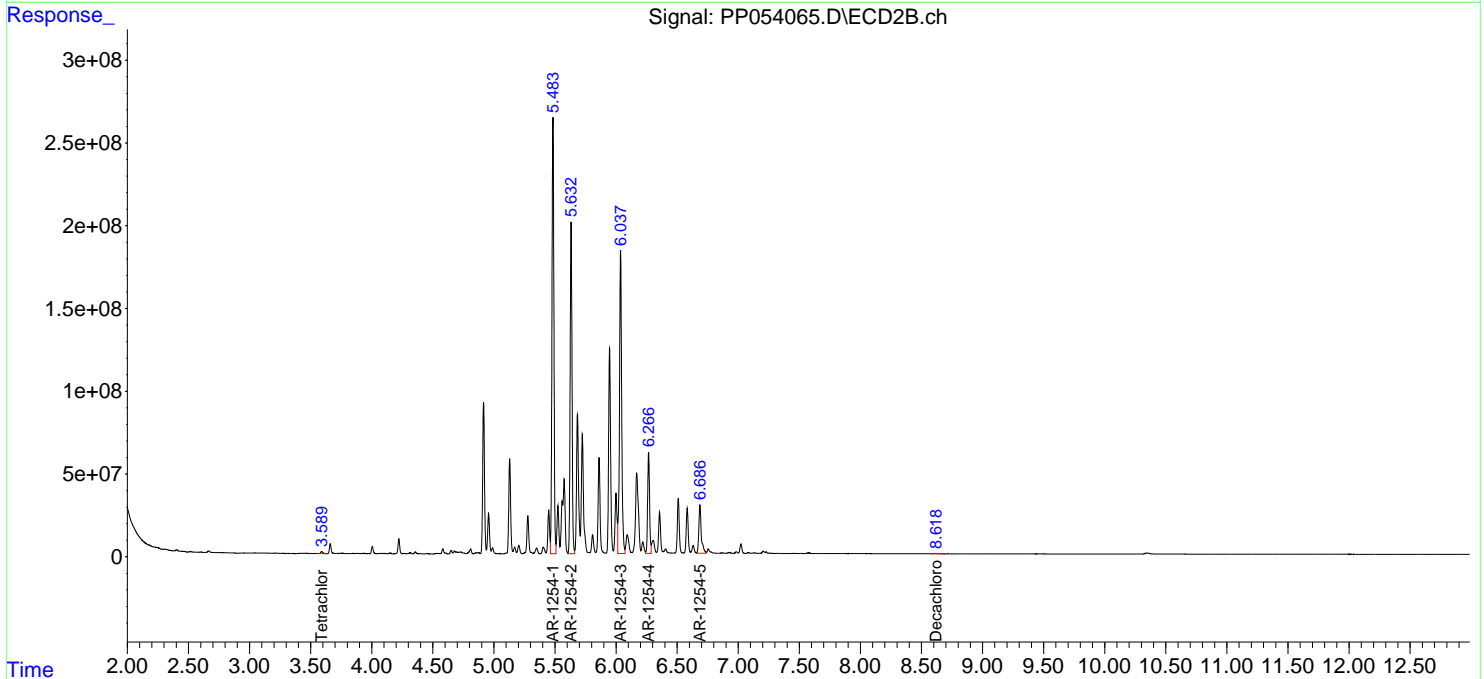
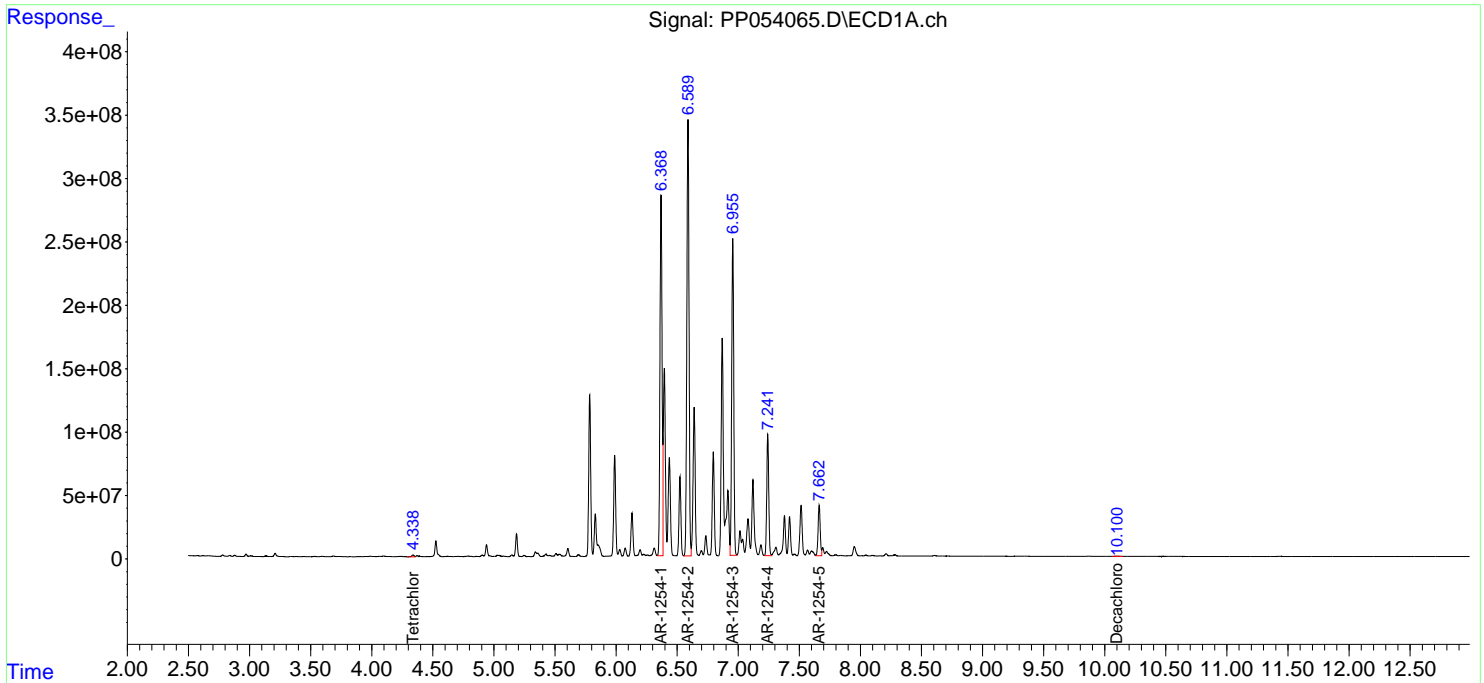
(f)=RT Delta > 1/2 Window (#)=Amounts differ by > 25% (m)=manual int.

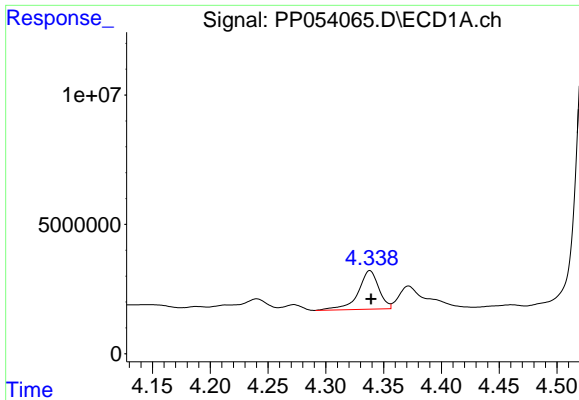
Data Path : Z:\pestpcbsrv\HPCHEM1\ECD_P\Data\PP122722\
 Data File : PP054065.D
 Signal(s) : Signal #1: ECD1A.ch Signal #2: ECD2B.ch
 Acq On : 27 Dec 2022 10:07
 Operator : YP\AJ
 Sample : N6168-03
 Misc :
 ALS Vial : 8 Sample Multiplier: 1

Instrument :
 ECD_P
 ClientSampleId :
 AUD-1895

Integration File signal 1: autoint1.e
 Integration File signal 2: autoint2.e
 Quant Time: Dec 27 17:31:08 2022
 Quant Method : Z:\pestpcbsrv\HPCHEM1\ECD_P\methods\PP121322.M
 Quant Title : GC EXTRACTABLES
 QLast Update : Wed Dec 14 05:38:40 2022
 Response via : Initial Calibration
 Integrator: ChemStation

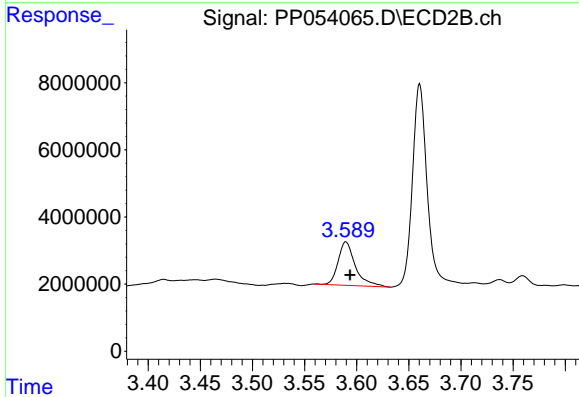
Volume Inj. : 2 µl
 Signal #1 Phase : ZB-MR1 Signal #2 Phase: ZB-MR2
 Signal #1 Info : 30Mx0.32mmx 0.50µm Signal #2 Info : 30M x 0.32mm x 0.25µm



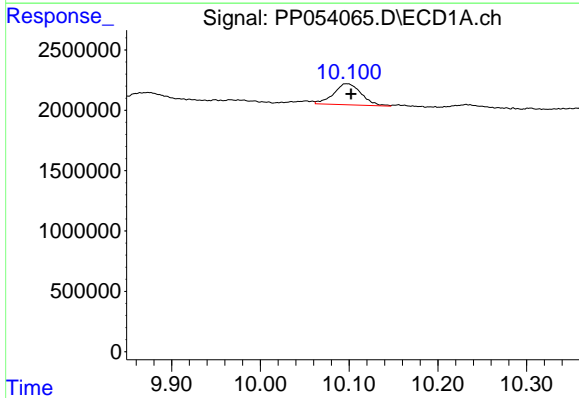


#1 Tetrachloro-m-xylene
 R.T.: 4.338 min
 Delta R.T.: 0.000 min
 Response: 18484744
 Conc: 8.80 ng/ml

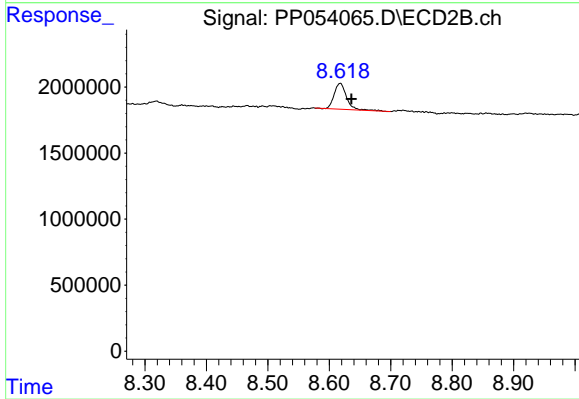
Instrument :
 ECD_P
 ClientSampleId :
 AUD-1895



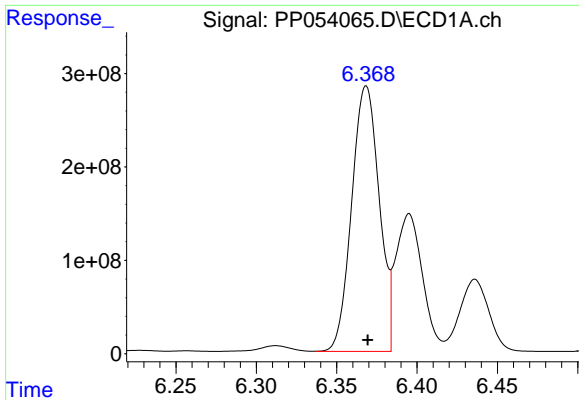
#1 Tetrachloro-m-xylene
 R.T.: 3.590 min
 Delta R.T.: -0.004 min
 Response: 14820038
 Conc: 9.49 ng/ml



#2 Decachlorobiphenyl
 R.T.: 10.097 min
 Delta R.T.: -0.005 min
 Response: 3776965
 Conc: 2.22 ng/ml



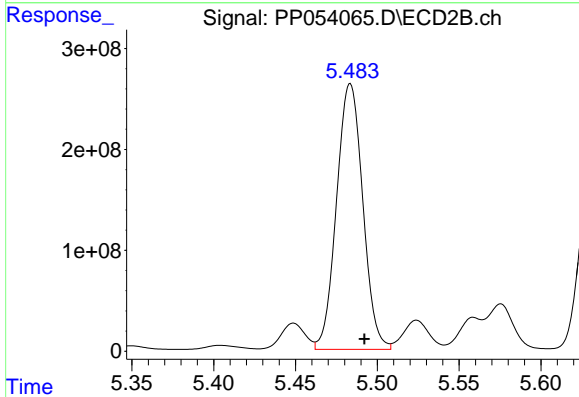
#2 Decachlorobiphenyl
 R.T.: 8.618 min
 Delta R.T.: -0.018 min
 Response: 2722347
 Conc: 1.95 ng/ml



#26 AR-1254-1

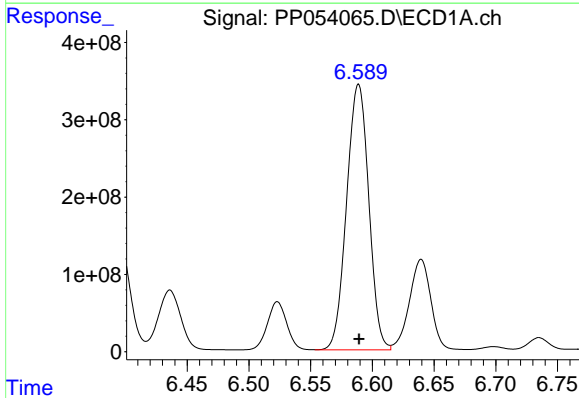
R.T.: 6.368 min
 Delta R.T.: -0.001 min
 Response: 3389295631
 Conc: 43737.10 ng/ml

Instrument :
 ECD_P
 ClientSampleId :
 AUD-1895



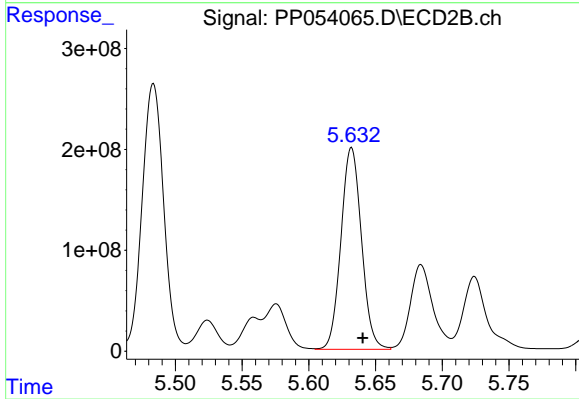
#26 AR-1254-1

R.T.: 5.484 min
 Delta R.T.: -0.009 min
 Response: 2939213119
 Conc: 44884.90 ng/ml



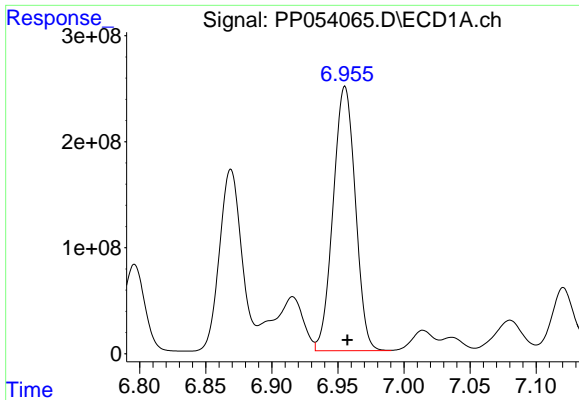
#27 AR-1254-2

R.T.: 6.589 min
 Delta R.T.: 0.000 min
 Response: 4292192670
 Conc: 36891.39 ng/ml



#27 AR-1254-2

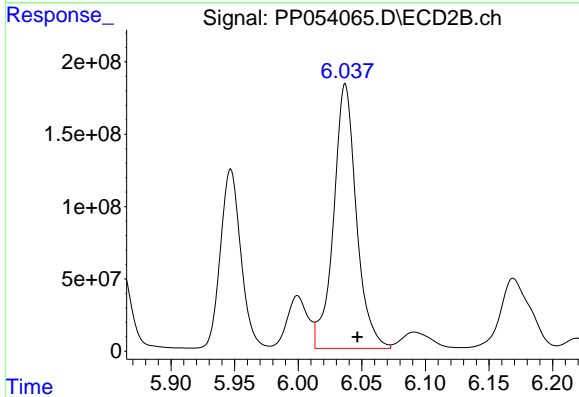
R.T.: 5.632 min
 Delta R.T.: -0.008 min
 Response: 2139532569
 Conc: 36686.31 ng/ml



#28 AR-1254-3

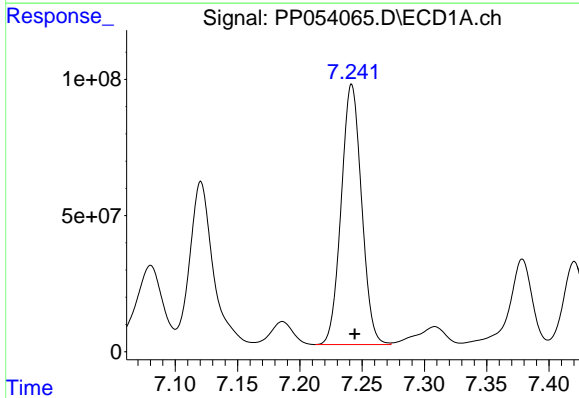
R.T.: 6.955 min
 Delta R.T.: -0.002 min
 Response: 2916720638
 Conc: 24902.12 ng/ml

Instrument :
 ECD_P
 ClientSampleId :
 AUD-1895



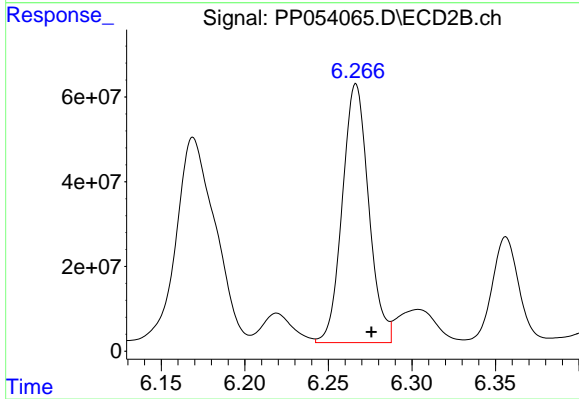
#28 AR-1254-3

R.T.: 6.037 min
 Delta R.T.: -0.010 min
 Response: 2279824784
 Conc: 25915.35 ng/ml



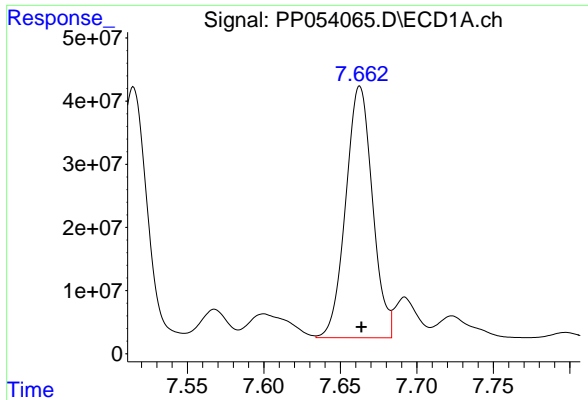
#29 AR-1254-4

R.T.: 7.242 min
 Delta R.T.: -0.002 min
 Response: 1089570385
 Conc: 13743.64 ng/ml



#29 AR-1254-4

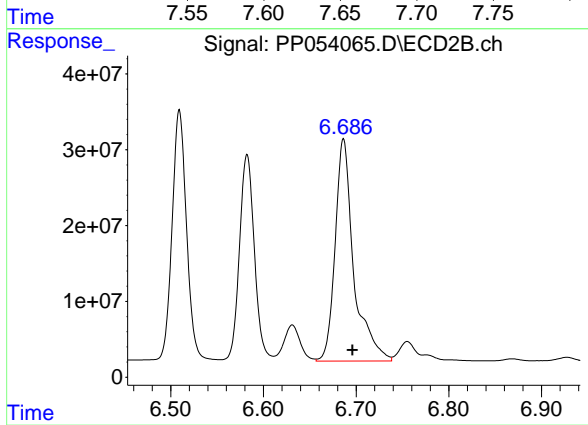
R.T.: 6.267 min
 Delta R.T.: -0.009 min
 Response: 669361383
 Conc: 14610.09 ng/ml



#30 AR-1254-5

R.T.: 7.663 min
Delta R.T.: -0.001 min
Response: 485439665
Conc: 4977.59 ng/ml

Instrument :
ECD_P
ClientSampleId :
AUD-1895



#30 AR-1254-5

R.T.: 6.686 min
Delta R.T.: -0.010 min
Response: 408934746
Conc: 5247.21 ng/ml