

Data Path : Z:\pestpcbsrv\HPCHEM1\ECD\_P\Data\PP122722\  
 Data File : PP054090.D  
 Signal(s) : Signal #1: ECD1A.ch Signal #2: ECD2B.ch  
 Acq On : 27 Dec 2022 19:33  
 Operator : YP\AJ  
 Sample : N6197-14 10X  
 Misc :  
 ALS Vial : 27 Sample Multiplier: 1

Instrument :  
 ECD\_P  
 ClientSampleId :  
 LAW-2022-66A

Integration File signal 1: autoint1.e  
 Integration File signal 2: autoint2.e  
 Quant Time: Dec 28 03:18:25 2022  
 Quant Method : Z:\pestpcbsrv\HPCHEM1\ECD\_P\methods\PP121322.M  
 Quant Title : GC EXTRACTABLES  
 QLast Update : Wed Dec 14 05:38:40 2022  
 Response via : Initial Calibration  
 Integrator: ChemStation

Volume Inj. : 2 µl  
 Signal #1 Phase : ZB-MR1 Signal #2 Phase: ZB-MR2  
 Signal #1 Info : 30Mx0.32mmx 0.50µ Signal #2 Info : 30M x 0.32mm x 0.25µm

Compound	RT#1	RT#2	Resp#1	Resp#2	ng/ml	ng/ml
-----						
System Monitoring Compounds						
1) SA Tetrachlo...	4.337	3.586	3882620	2534043	1.849	1.623
2) SA Decachlor...	10.100	8.617	3908796	2672225	2.302	1.913

Target Compounds

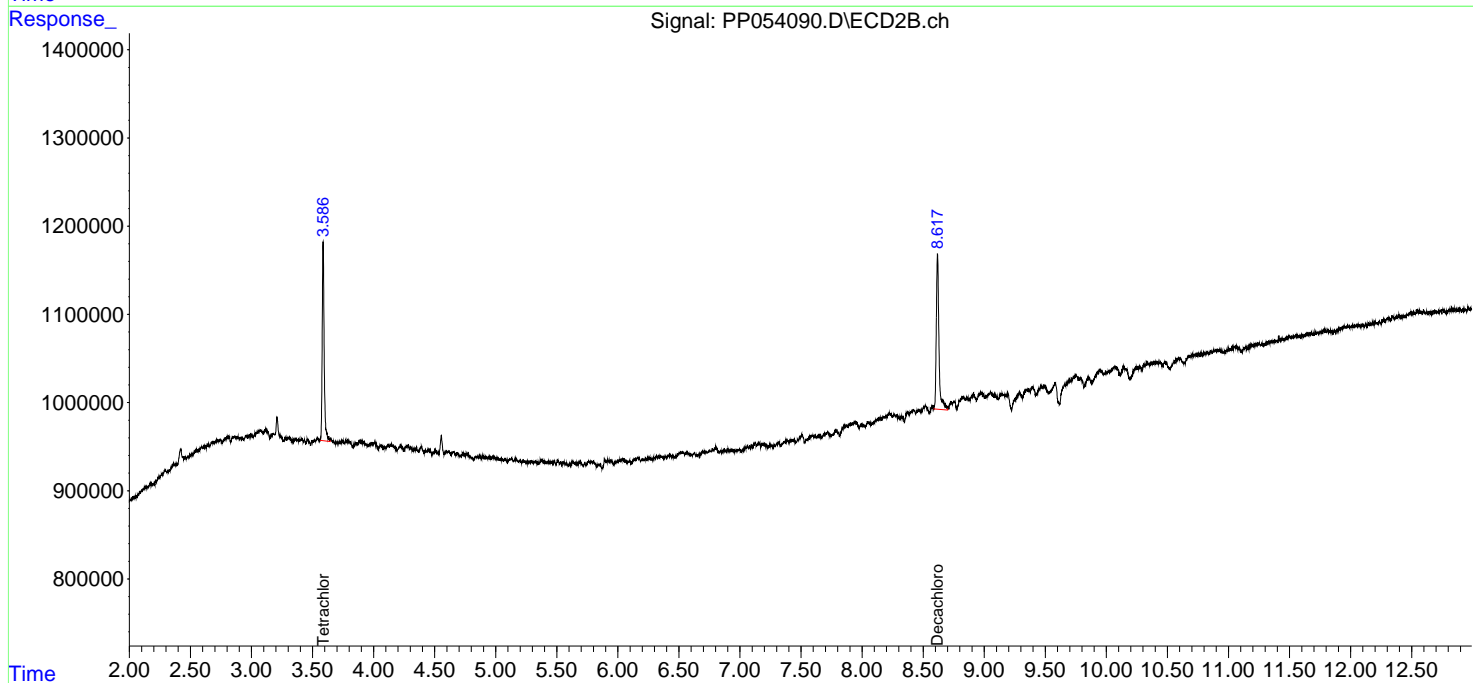
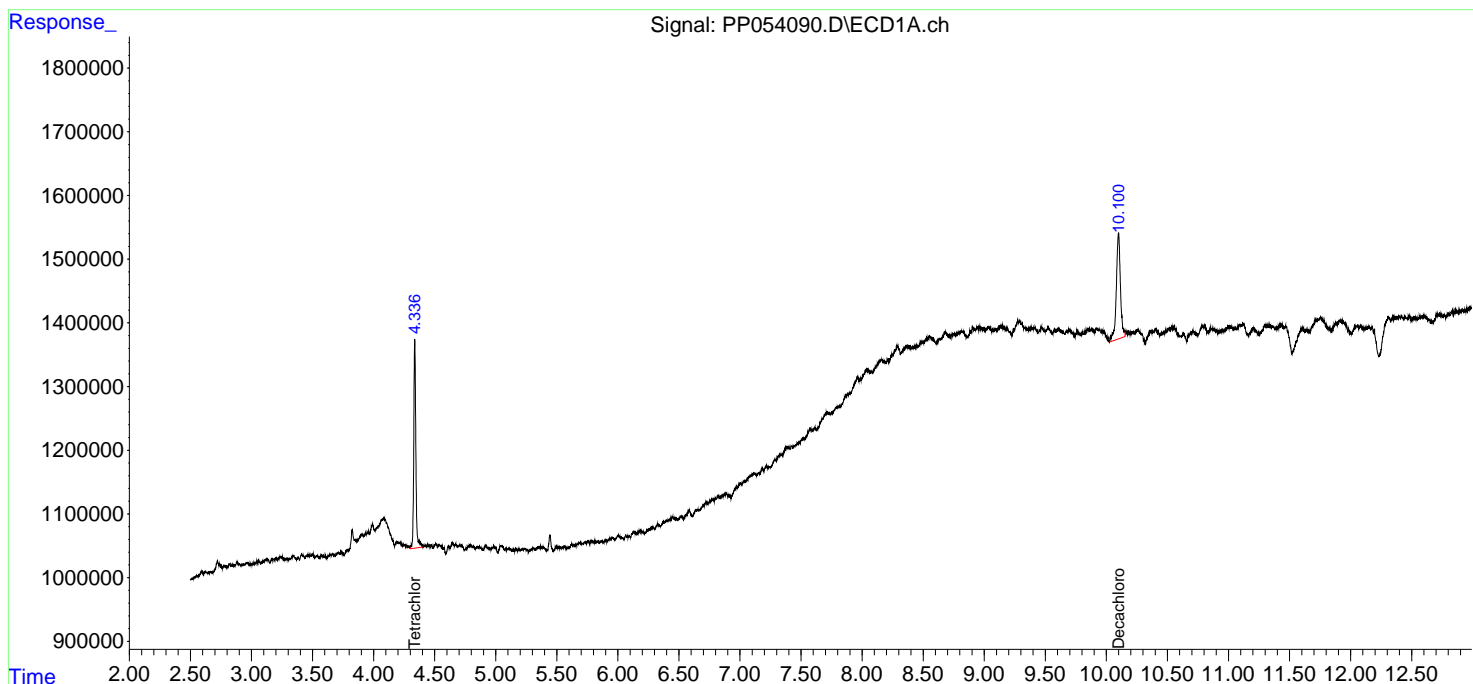
-----  
 (f)=RT Delta > 1/2 Window (#)=Amounts differ by > 25% (m)=manual int.

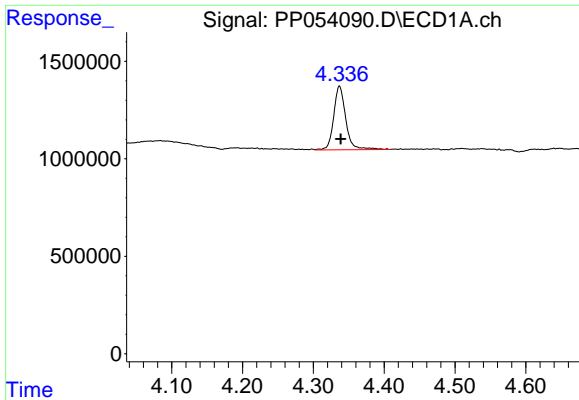
Data Path : Z:\pestpcbsrv\HPCHEM1\ECD\_P\Data\PP122722\  
 Data File : PP054090.D  
 Signal(s) : Signal #1: ECD1A.ch Signal #2: ECD2B.ch  
 Acq On : 27 Dec 2022 19:33  
 Operator : YP\AJ  
 Sample : N6197-14 10X  
 Misc :  
 ALS Vial : 27 Sample Multiplier: 1

**Instrument :**  
 ECD\_P  
**ClientSampleId :**  
 LAW-2022-66A

Integration File signal 1: autoint1.e  
 Integration File signal 2: autoint2.e  
 Quant Time: Dec 28 03:18:25 2022  
 Quant Method : Z:\pestpcbsrv\HPCHEM1\ECD\_P\methods\PP121322.M  
 Quant Title : GC EXTRACTABLES  
 QLast Update : Wed Dec 14 05:38:40 2022  
 Response via : Initial Calibration  
 Integrator: ChemStation

Volume Inj. : 2 µl  
 Signal #1 Phase : ZB-MR1 Signal #2 Phase: ZB-MR2  
 Signal #1 Info : 30Mx0.32mmx 0.50µ Signal #2 Info : 30M x 0.32mm x 0.25µm

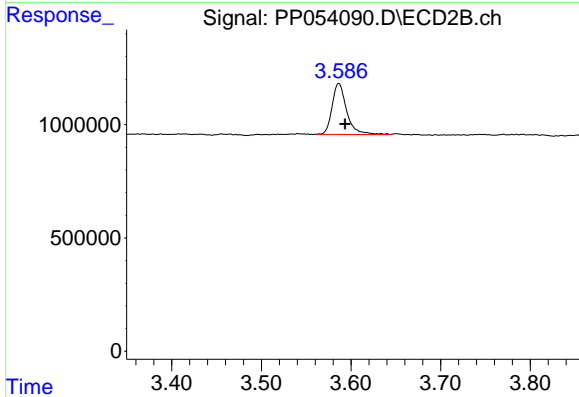




#1 Tetrachloro-m-xylene

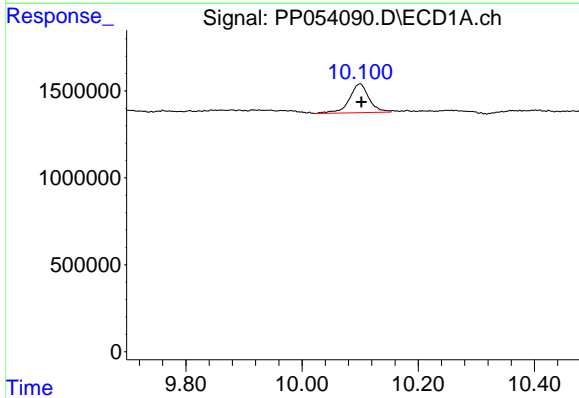
R.T.: 4.337 min  
 Delta R.T.: -0.002 min  
 Response: 3882620  
 Conc: 1.85 ng/ml

Instrument :  
 ECD\_P  
 ClientSampleId :  
 LAW-2022-66A



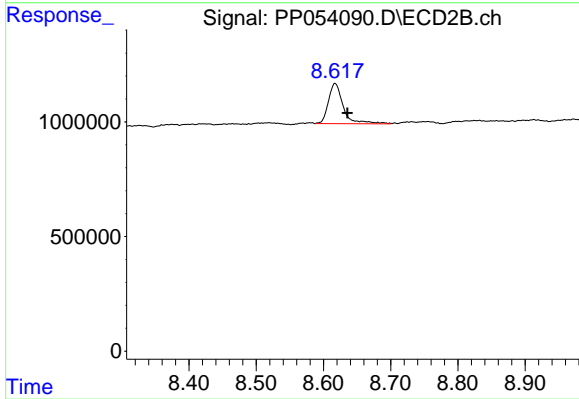
#1 Tetrachloro-m-xylene

R.T.: 3.586 min  
 Delta R.T.: -0.007 min  
 Response: 2534043  
 Conc: 1.62 ng/ml



#2 Decachlorobiphenyl

R.T.: 10.100 min  
 Delta R.T.: -0.002 min  
 Response: 3908796  
 Conc: 2.30 ng/ml



#2 Decachlorobiphenyl

R.T.: 8.617 min  
 Delta R.T.: -0.018 min  
 Response: 2672225  
 Conc: 1.91 ng/ml