

Data Path : Z:\pestpcbsrv\HPCHEM1\ECD\_P\Data\PP122723\  
 Data File : PP062661.D  
 Signal(s) : Signal #1: ECD1A.ch Signal #2: ECD2B.ch  
 Acq On : 27 Dec 2023 15:53  
 Operator : YP\AJ  
 Sample : PB158066BS  
 Misc :  
 ALS Vial : 26 Sample Multiplier: 1

**Instrument :**  
 ECD\_P  
**ClientSampleId :**  
 PB158066BS

**Manual Integrations**  
**APPROVED**

Reviewed By :Yogesh Patel 12/28/2023  
 Supervised By :Ankita Jodhani 12/28/2023

Integration File signal 1: autoint1.e  
 Integration File signal 2: autoint2.e  
 Quant Time: Dec 28 00:22:02 2023  
 Quant Method : Z:\pestpcbsrv\HPCHEM1\ECD\_P\methods\PP122123.M  
 Quant Title : GC EXTRACTABLES  
 QLast Update : Fri Dec 22 03:29:15 2023  
 Response via : Initial Calibration  
 Integrator: ChemStation

Volume Inj. : 2 µl  
 Signal #1 Phase : ZB-MR1 Signal #2 Phase: ZB-MR2  
 Signal #1 Info : 30Mx0.32mmx 0.50µ Signal #2 Info : 30M x 0.32mm x 0.25µm

Compound	RT#1	RT#2	Resp#1	Resp#2	ng/ml	ng/ml
-----						
System Monitoring Compounds						
1) SA Tetrachlo...	4.398	3.685	51801869	64268404	23.827	21.536
2) SA Decachlor...	10.153	8.787	34403183	53039127	23.858	20.835
Target Compounds						
3) L1 AR-1016-1	5.570	4.793	37220477	51787189	546.137m	551.518
4) L1 AR-1016-2	5.593	4.812	58360375	74021375	575.101m	552.685
5) L1 AR-1016-3	5.655	4.991	36307960	39993930	576.176m	547.519
6) L1 AR-1016-4	5.753	5.034	29989542	32832547	585.048m	538.967
7) L1 AR-1016-5	6.049	5.251	30349376	42062842	572.879m	522.805
31) L7 AR-1260-1	7.181	6.301	53083971	79949346	536.193	500.149
32) L7 AR-1260-2	7.440	6.491	60355719	94448342	531.952	515.866
33) L7 AR-1260-3	7.800	6.647	38393244	90625204	448.086m	503.867
34) L7 AR-1260-4	8.025	7.124	46473496	66353864	479.901m	450.954
35) L7 AR-1260-5	8.344	7.368	79014050	153.0E6	443.301m	474.944

(f)=RT Delta > 1/2 Window (#)=Amounts differ by > 25% (m)=manual int.

Data Path : Z:\pestpcbsrv\HPCHEM1\ECD\_P\Data\PP122723\  
 Data File : PP062661.D  
 Signal(s) : Signal #1: ECD1A.ch Signal #2: ECD2B.ch  
 Acq On : 27 Dec 2023 15:53  
 Operator : YP\AJ  
 Sample : PB158066BS  
 Misc :  
 ALS Vial : 26 Sample Multiplier: 1

**Instrument :**

ECD\_P

**ClientSampleId :**

PB158066BS

**Manual Integrations**

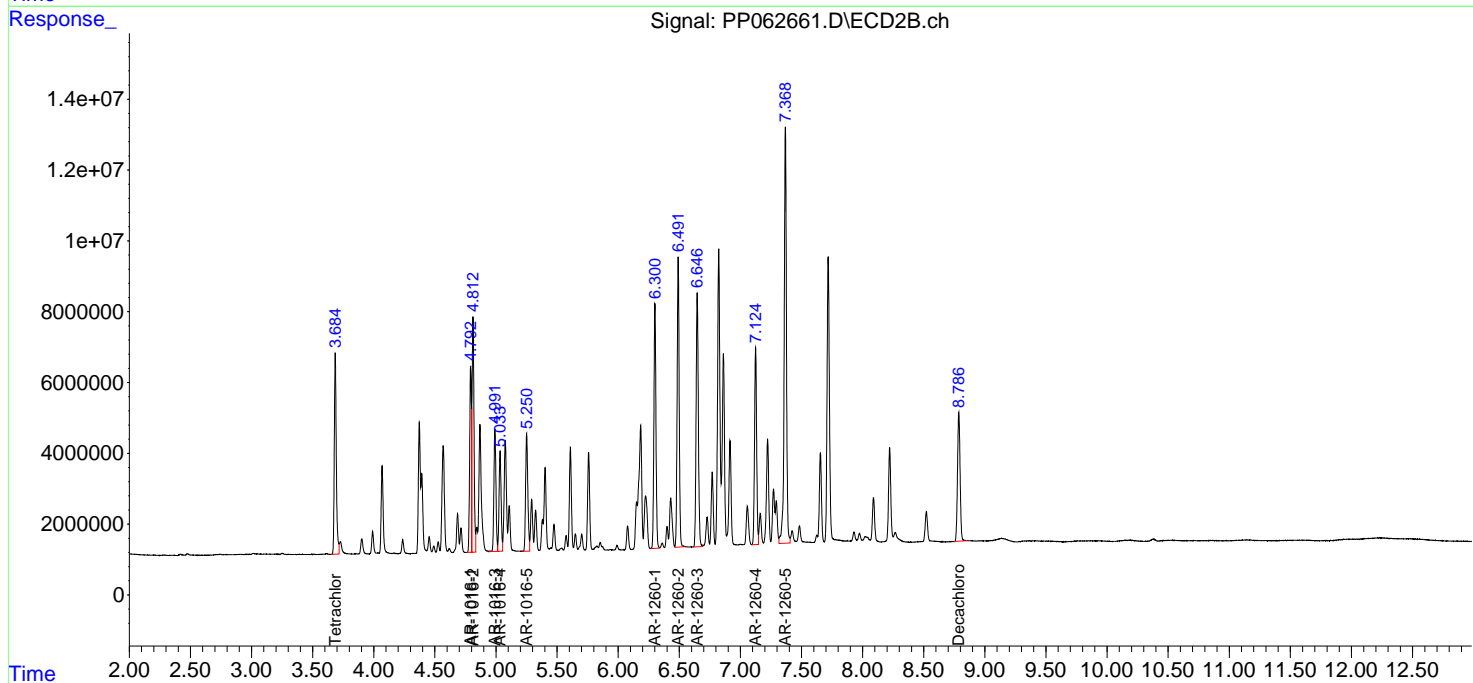
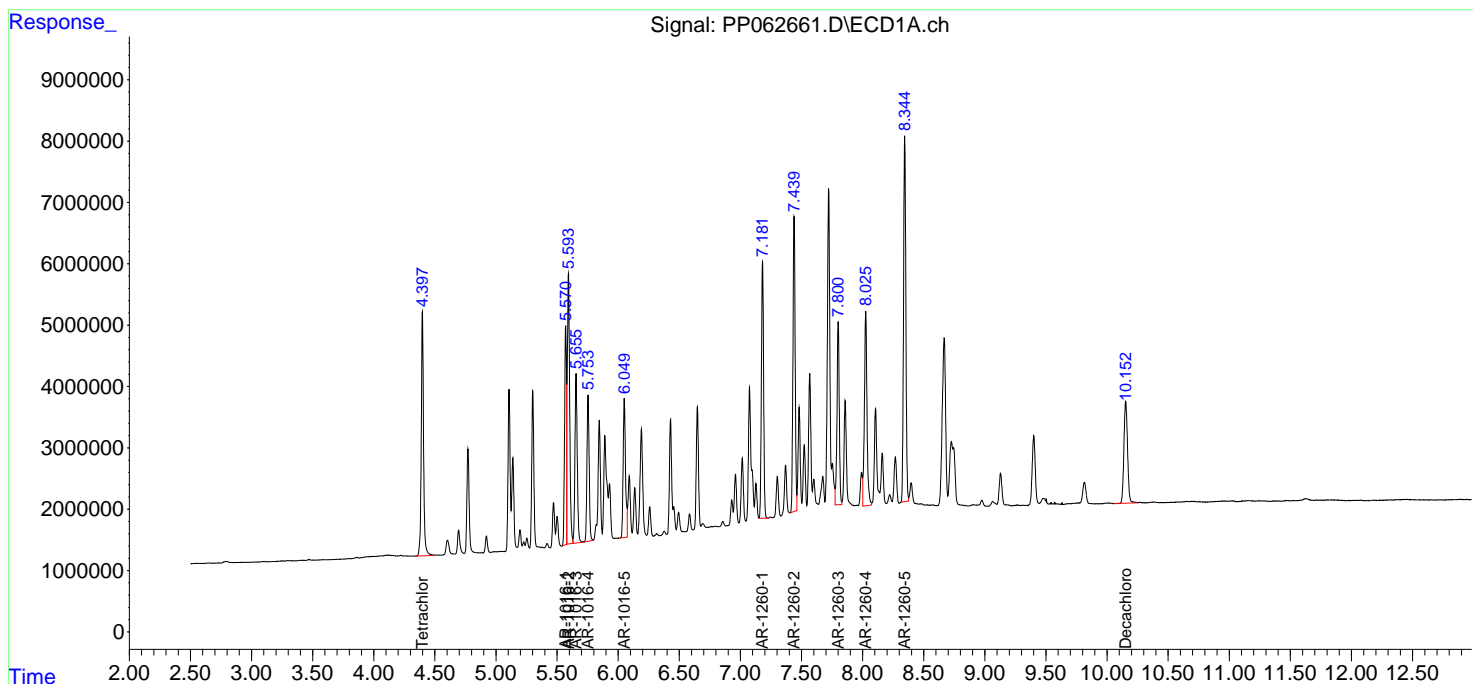
**APPROVED**

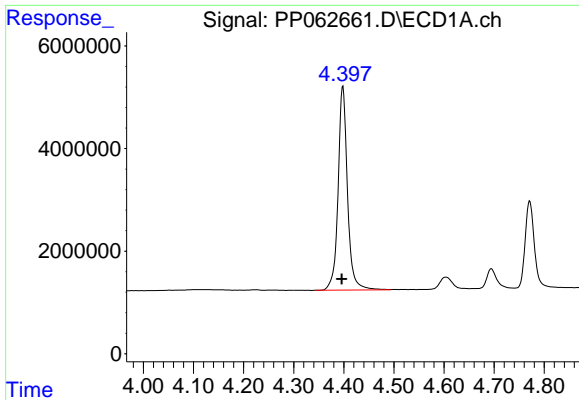
Reviewed By :Yogesh Patel 12/28/2023

Supervised By :Ankita Jodhani 12/28/2023

Integration File signal 1: autoint1.e  
 Integration File signal 2: autoint2.e  
 Quant Time: Dec 28 00:22:02 2023  
 Quant Method : Z:\pestpcbsrv\HPCHEM1\ECD\_P\methods\PP122123.M  
 Quant Title : GC EXTRACTABLES  
 QLast Update : Fri Dec 22 03:29:15 2023  
 Response via : Initial Calibration  
 Integrator: ChemStation

Volume Inj. : 2 µl  
 Signal #1 Phase : ZB-MR1 Signal #2 Phase: ZB-MR2  
 Signal #1 Info : 30Mx0.32mmx 0.50µ Signal #2 Info : 30M x 0.32mm x 0.25µm

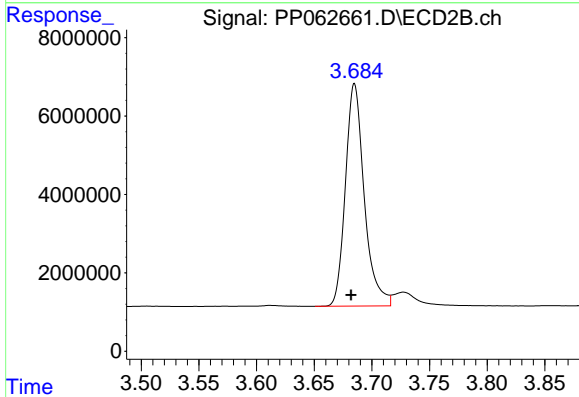




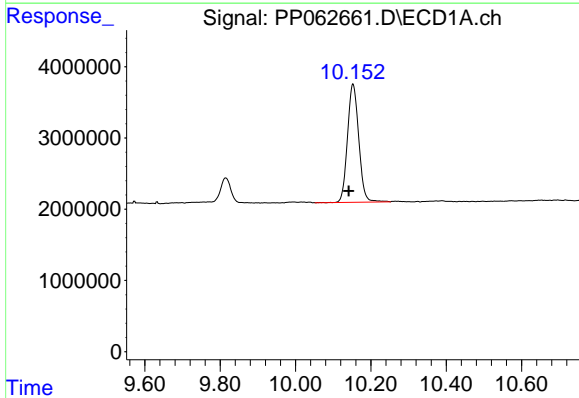
#1 Tetrachloro-m-xylene  
 R.T.: 4.398 min  
 Delta R.T.: 0.002 min  
 Response: 51801869  
 Conc: 23.83 ng/ml

Instrument : ECD\_P  
 ClientSampleId : PB158066BS

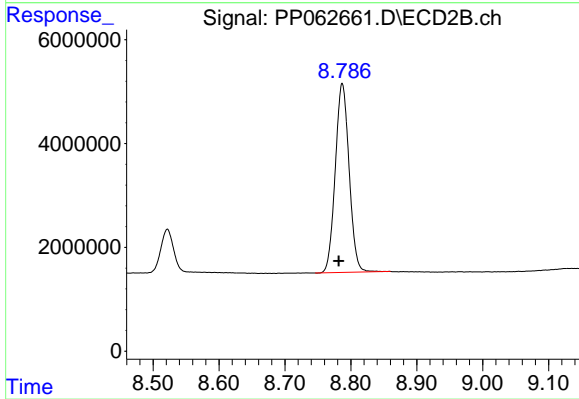
**Manual Integrations**  
**APPROVED**  
 Reviewed By :Yogesh Patel 12/28/2023  
 Supervised By :Ankita Jodhani 12/28/2023



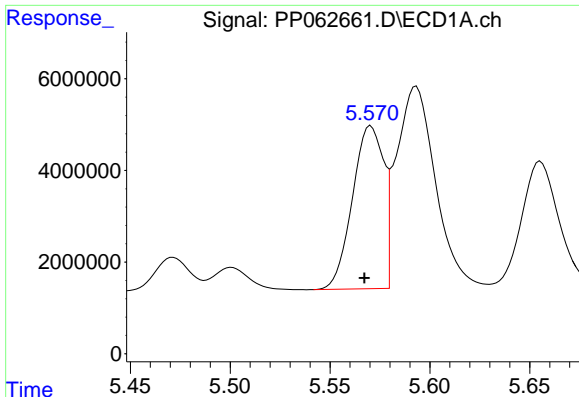
#1 Tetrachloro-m-xylene  
 R.T.: 3.685 min  
 Delta R.T.: 0.003 min  
 Response: 64268404  
 Conc: 21.54 ng/ml



#2 Decachlorobiphenyl  
 R.T.: 10.153 min  
 Delta R.T.: 0.011 min  
 Response: 34403183  
 Conc: 23.86 ng/ml



#2 Decachlorobiphenyl  
 R.T.: 8.787 min  
 Delta R.T.: 0.005 min  
 Response: 53039127  
 Conc: 20.83 ng/ml



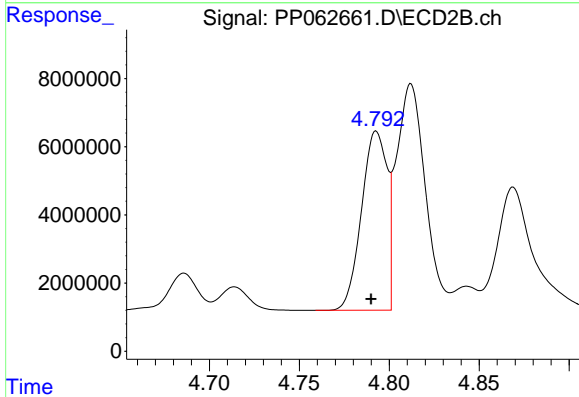
#3 AR-1016-1

R.T.: 5.570 min  
 Delta R.T.: 0.003 min  
 Response: 37220477  
 Conc: 546.14 ng/ml

Instrument :  
 ECD\_P  
 ClientSampleId :  
 PB158066BS

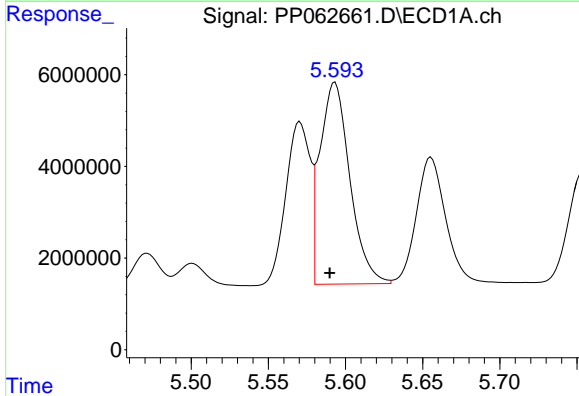
Manual Integrations  
 APPROVED

Reviewed By :Yogesh Patel 12/28/2023  
 Supervised By :Ankita Jodhani 12/28/2023



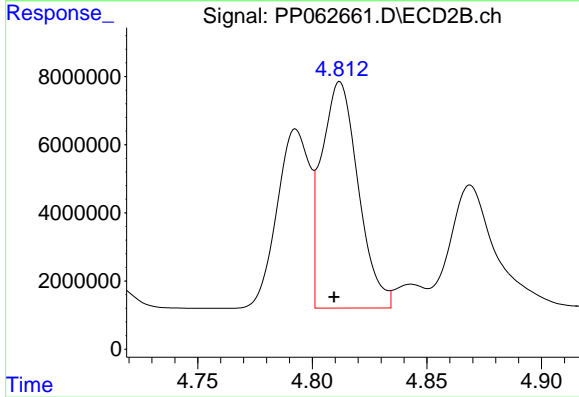
#3 AR-1016-1

R.T.: 4.793 min  
 Delta R.T.: 0.003 min  
 Response: 51787189  
 Conc: 551.52 ng/ml



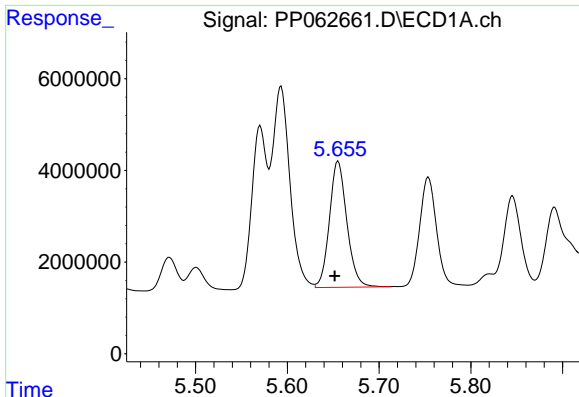
#4 AR-1016-2

R.T.: 5.593 min  
 Delta R.T.: 0.003 min  
 Response: 58360375  
 Conc: 575.10 ng/ml m



#4 AR-1016-2

R.T.: 4.812 min  
 Delta R.T.: 0.003 min  
 Response: 74021375  
 Conc: 552.69 ng/ml



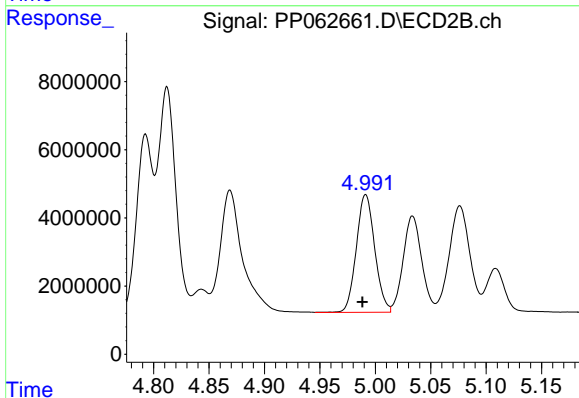
#5 AR-1016-3

R.T.: 5.655 min  
 Delta R.T.: 0.003 min  
 Response: 36307960  
 Conc: 576.18 ng/ml

Instrument :  
 ECD\_P  
 ClientSampleId :  
 PB158066BS

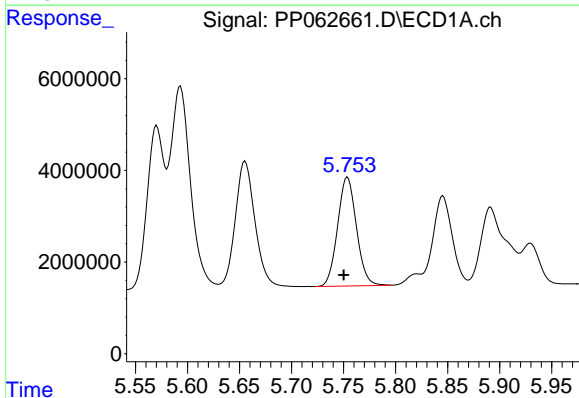
Manual Integrations  
 APPROVED

Reviewed By :Yogesh Patel 12/28/2023  
 Supervised By :Ankita Jodhani 12/28/2023



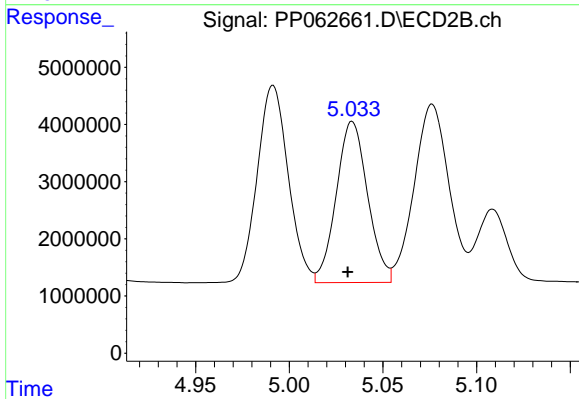
#5 AR-1016-3

R.T.: 4.991 min  
 Delta R.T.: 0.003 min  
 Response: 39993930  
 Conc: 547.52 ng/ml



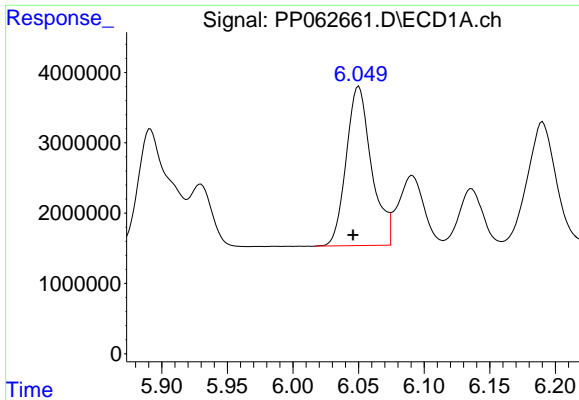
#6 AR-1016-4

R.T.: 5.753 min  
 Delta R.T.: 0.003 min  
 Response: 29989542  
 Conc: 585.05 ng/ml m



#6 AR-1016-4

R.T.: 5.034 min  
 Delta R.T.: 0.002 min  
 Response: 32832547  
 Conc: 538.97 ng/ml



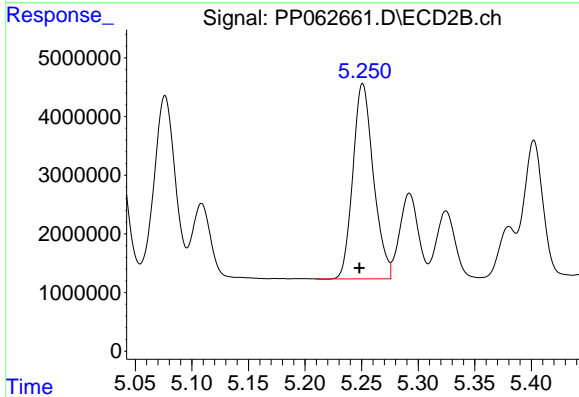
#7 AR-1016-5

R.T.: 6.049 min  
 Delta R.T.: 0.004 min  
 Response: 30349376  
 Conc: 572.88 ng/ml

Instrument :  
 ECD\_P  
 ClientSampleId :  
 PB158066BS

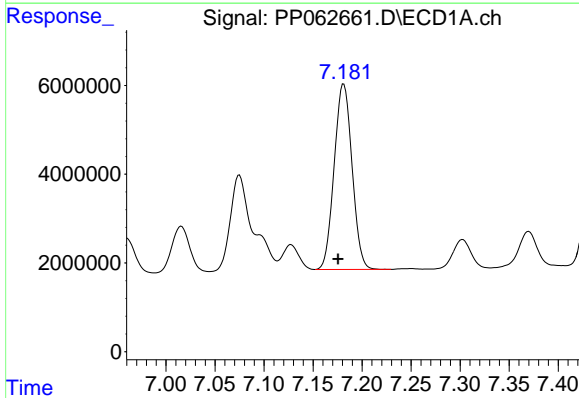
Manual Integrations  
 APPROVED

Reviewed By :Yogesh Patel 12/28/2023  
 Supervised By :Ankita Jodhani 12/28/2023



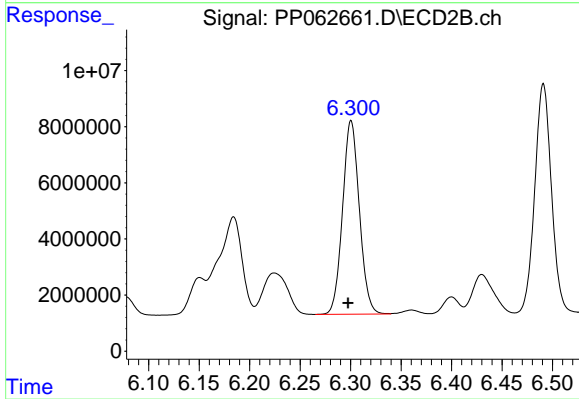
#7 AR-1016-5

R.T.: 5.251 min  
 Delta R.T.: 0.003 min  
 Response: 42062842  
 Conc: 522.80 ng/ml



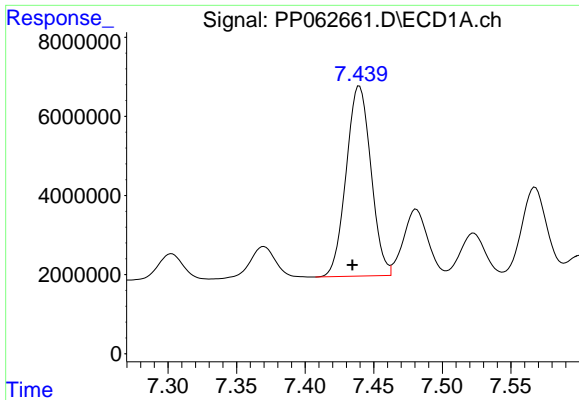
#31 AR-1260-1

R.T.: 7.181 min  
 Delta R.T.: 0.006 min  
 Response: 53083971  
 Conc: 536.19 ng/ml



#31 AR-1260-1

R.T.: 6.301 min  
 Delta R.T.: 0.003 min  
 Response: 79949346  
 Conc: 500.15 ng/ml



#32 AR-1260-2

R.T.: 7.440 min  
 Delta R.T.: 0.005 min  
 Response: 60355719  
 Conc: 531.95 ng/ml

Instrument :

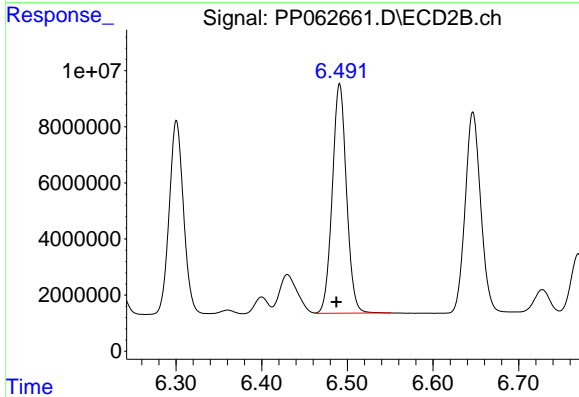
ECD\_P

ClientSampleId :

PB158066BS

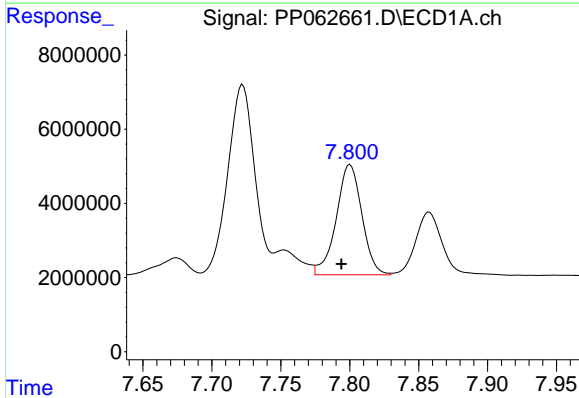
Manual Integrations  
 APPROVED

Reviewed By :Yogesh Patel 12/28/2023  
 Supervised By :Ankita Jodhani 12/28/2023



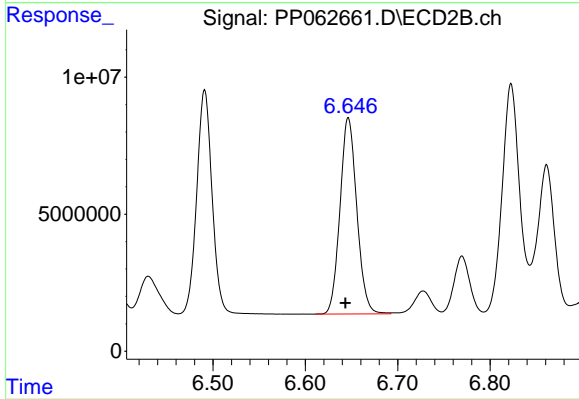
#32 AR-1260-2

R.T.: 6.491 min  
 Delta R.T.: 0.004 min  
 Response: 94448342  
 Conc: 515.87 ng/ml



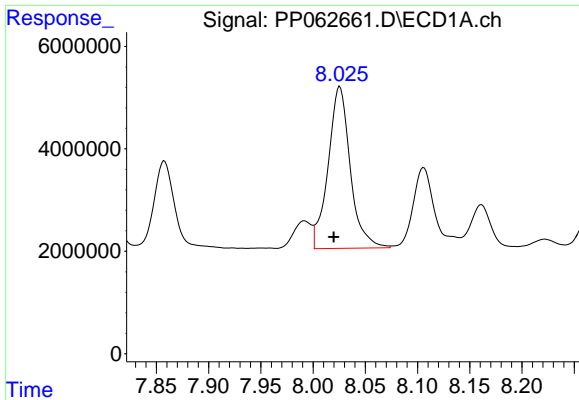
#33 AR-1260-3

R.T.: 7.800 min  
 Delta R.T.: 0.005 min  
 Response: 38393244  
 Conc: 448.09 ng/ml m



#33 AR-1260-3

R.T.: 6.647 min  
 Delta R.T.: 0.003 min  
 Response: 90625204  
 Conc: 503.87 ng/ml



#34 AR-1260-4

R.T.: 8.025 min  
 Delta R.T.: 0.005 min  
 Response: 46473496  
 Conc: 479.90 ng/ml

Instrument :

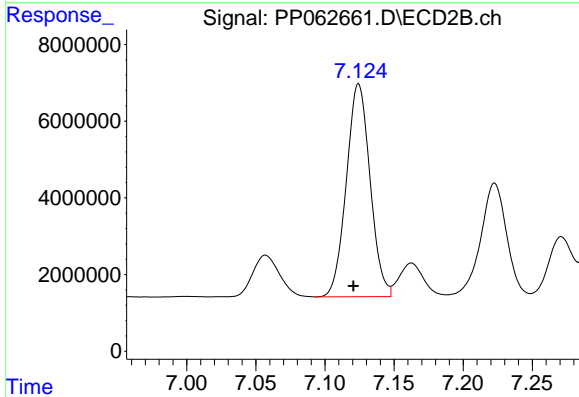
ECD\_P

ClientSampleId :

PB158066BS

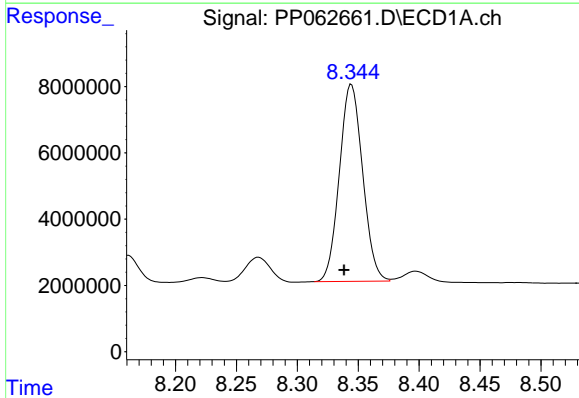
Manual Integrations  
 APPROVED

Reviewed By :Yogesh Patel 12/28/2023  
 Supervised By :Ankita Jodhani 12/28/2023



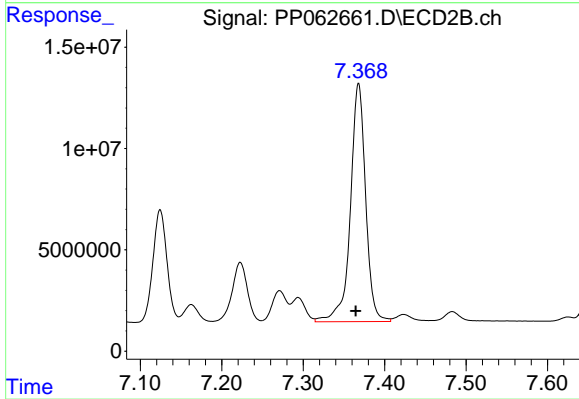
#34 AR-1260-4

R.T.: 7.124 min  
 Delta R.T.: 0.004 min  
 Response: 66353864  
 Conc: 450.95 ng/ml



#35 AR-1260-5

R.T.: 8.344 min  
 Delta R.T.: 0.005 min  
 Response: 79014050  
 Conc: 443.30 ng/ml m



#35 AR-1260-5

R.T.: 7.368 min  
 Delta R.T.: 0.004 min  
 Response: 152989321  
 Conc: 474.94 ng/ml