

Data Path : Z:\pestpcbsrv\HPCHEM1\ECD_P\Data\PP122821\
 Data File : PP042289.D
 Signal(s) : Signal #1: ECD1A.CH Signal #2: ECD2B.CH
 Acq On : 28 Dec 2021 19:53
 Operator : AJ\MA
 Sample : M5241-04MSD
 Misc :
 ALS Vial : 31 Sample Multiplier: 1

Instrument :
 ECD_P
ClientSampleId :
 TP-2DMSD

Manual Integrations
APPROVED
 Reviewed By :Ankita Jodhani 12/29/2021
 Supervised By :mohammad ahmed 12/29/2021

Integration File signal 1: autoint1.e
 Integration File signal 2: autoint2.e
 Quant Time: Dec 29 05:47:24 2021
 Quant Method : Z:\pestpcbsrv\HPCHEM1\ECD_P\methods\PP122321.M
 Quant Title : GC EXTRACTABLES
 QLast Update : Fri Dec 24 23:47:53 2021
 Response via : Initial Calibration
 Integrator: ChemStation 6890 Scale Mode: Small noise peaks clipped

Volume Inj. : 2 µl
 Signal #1 Phase : ZB-MR1 Signal #2 Phase: ZB-MR2
 Signal #1 Info : 30Mx0.32mmx 0.50µ Signal #2 Info : 30M x 0.32mm x 0.25µm

Compound	RT#1	RT#2	Resp#1	Resp#2	ng/ml	ng/ml

System Monitoring Compounds						
1) SA Tetrachlo...	4.922	4.059	261556	436201	19.921	19.099
2) SA Decachlor...	10.919	9.408	328101	371561	26.937	22.976
Target Compounds						
3) L1 AR-1016-1	6.231	5.327	213407	396143	480.106	432.145m
4) L1 AR-1016-2	6.254	5.348	313209	545527	473.504m	432.960
5) L1 AR-1016-3	6.321	5.542	193208	311115	473.678m	443.001m
6) L1 AR-1016-4	6.426	5.593	156786	258181	481.266m	475.443m
7) L1 AR-1016-5	6.743	5.824	159318	297672	464.215	456.547m
31) L7 AR-1260-1	7.923	6.927	342497	550694	577.928m	518.182
32) L7 AR-1260-2	8.189	7.123	450050	648916	582.879	525.658
33) L7 AR-1260-3	8.557	7.280	281273	581749	543.724	434.144
34) L7 AR-1260-4	8.786	7.767	331100	411804	571.827m	461.168
35) L7 AR-1260-5	9.109	8.013	639827	961247	546.821	499.472

(f)=RT Delta > 1/2 Window (#)=Amounts differ by > 25% (m)=manual int.

Data Path : Z:\pestpcbsrv\HPCHEM1\ECD_P\Data\PP122821\
 Data File : PP042289.D
 Signal(s) : Signal #1: ECD1A.CH Signal #2: ECD2B.CH
 Acq On : 28 Dec 2021 19:53
 Operator : AJ\MA
 Sample : M5241-04MSD
 Misc :
 ALS Vial : 31 Sample Multiplier: 1

Instrument :

ECD_P

ClientSampleId :

TP-2DMSD

Manual Integrations

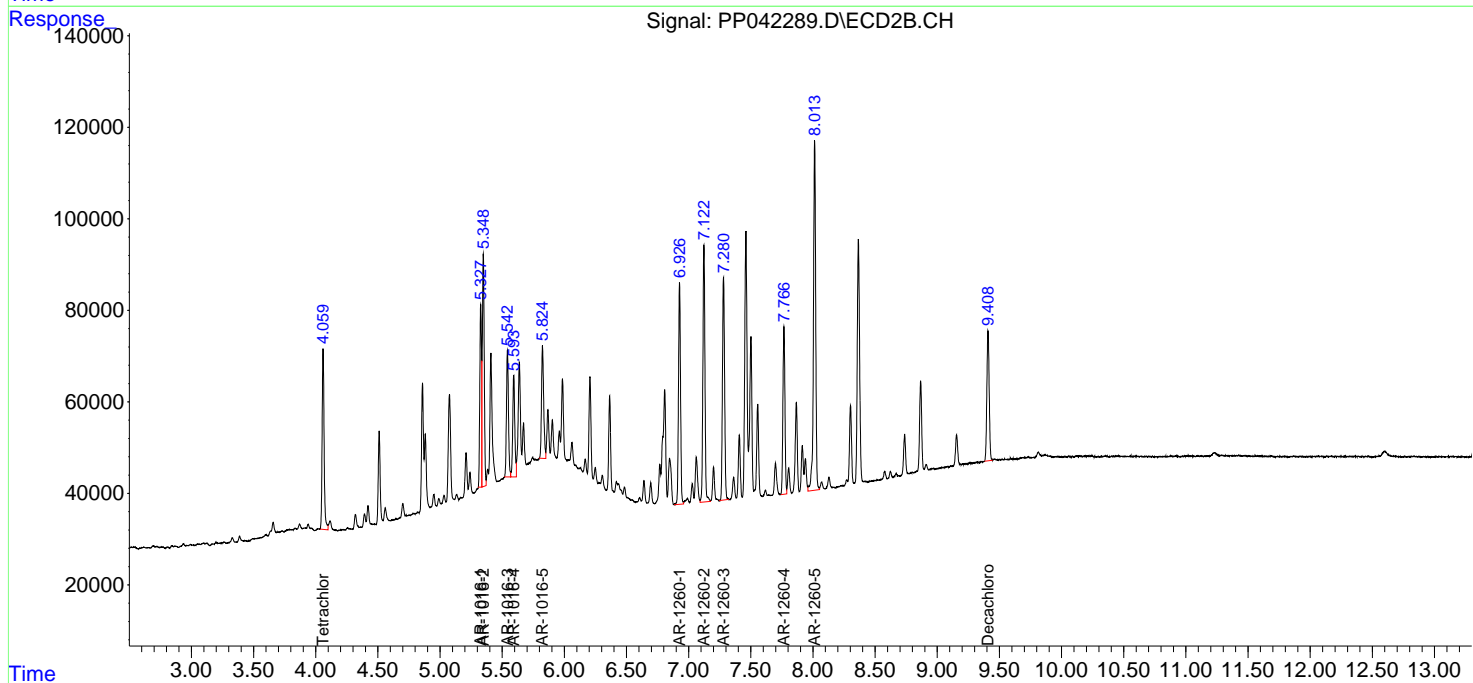
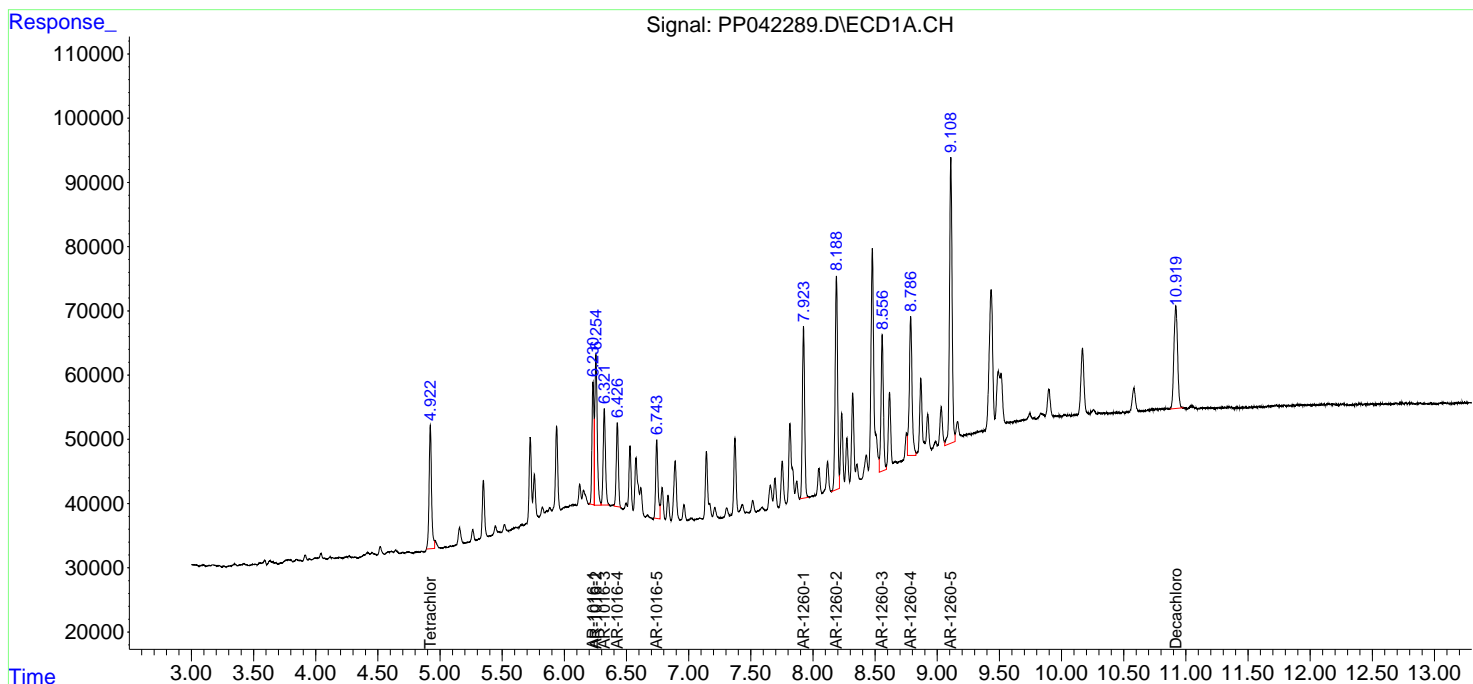
APPROVED

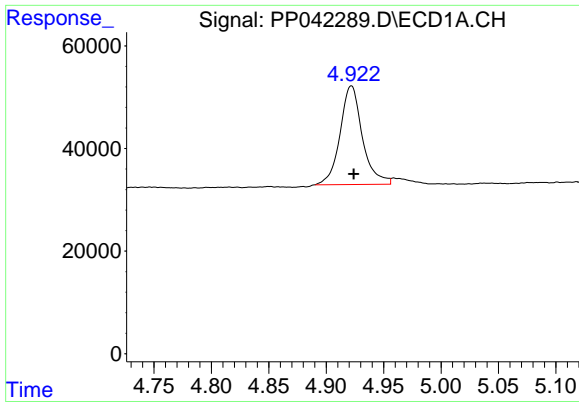
Reviewed By :Ankita Jodhani 12/29/2021

Supervised By :mohammad ahmed 12/29/2021

Integration File signal 1: autoint1.e
 Integration File signal 2: autoint2.e
 Quant Time: Dec 29 05:47:24 2021
 Quant Method : Z:\pestpcbsrv\HPCHEM1\ECD_P\methods\PP122321.M
 Quant Title : GC EXTRACTABLES
 QLast Update : Fri Dec 24 23:47:53 2021
 Response via : Initial Calibration
 Integrator: ChemStation 6890 Scale Mode: Small noise peaks clipped

Volume Inj. : 2 µl
 Signal #1 Phase : ZB-MR1 Signal #2 Phase: ZB-MR2
 Signal #1 Info : 30Mx0.32mmx 0.50µ Signal #2 Info : 30M x 0.32mm x 0.25µm





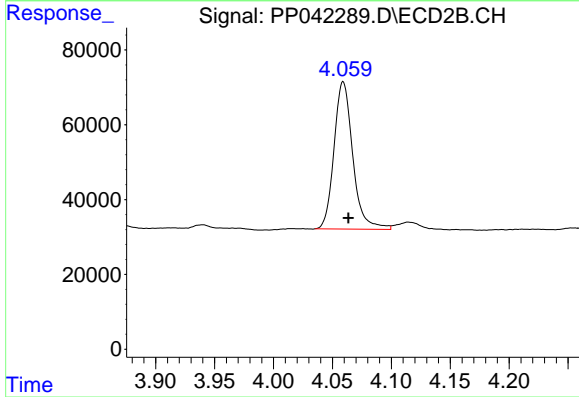
#1 Tetrachloro-m-xylene

R.T.: 4.922 min
 Delta R.T.: -0.002 min
 Response: 261556
 Conc: 19.92 ng/ml

Instrument :
 ECD_P
 ClientSampleId :
 TP-2DMSD

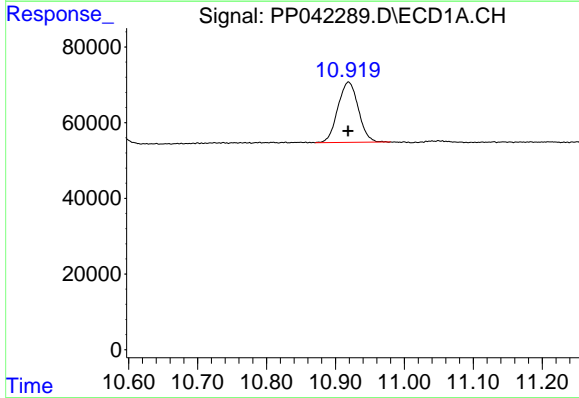
Manual Integrations
 APPROVED

Reviewed By :Ankita Jodhani 12/29/2021
 Supervised By :mohammad ahmed 12/29/2021



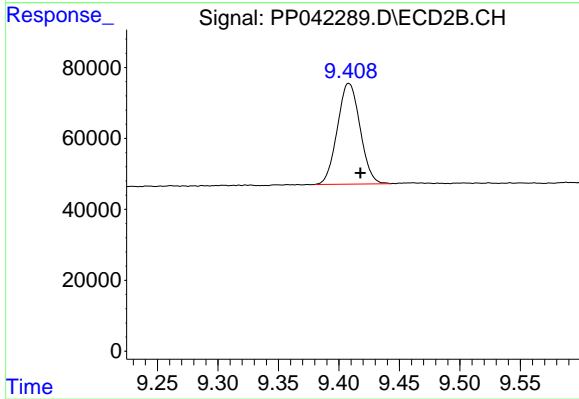
#1 Tetrachloro-m-xylene

R.T.: 4.059 min
 Delta R.T.: -0.004 min
 Response: 436201
 Conc: 19.10 ng/ml



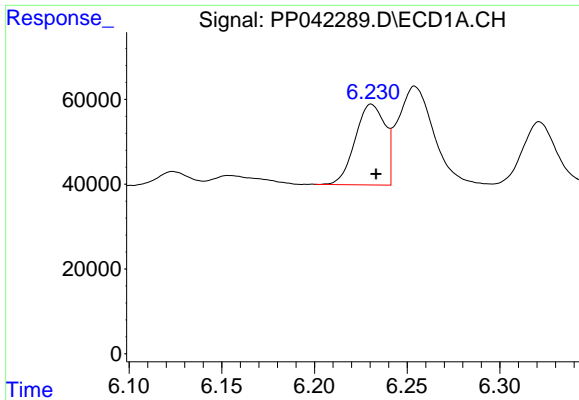
#2 Decachlorobiphenyl

R.T.: 10.919 min
 Delta R.T.: 0.000 min
 Response: 328101
 Conc: 26.94 ng/ml



#2 Decachlorobiphenyl

R.T.: 9.408 min
 Delta R.T.: -0.010 min
 Response: 371561
 Conc: 22.98 ng/ml



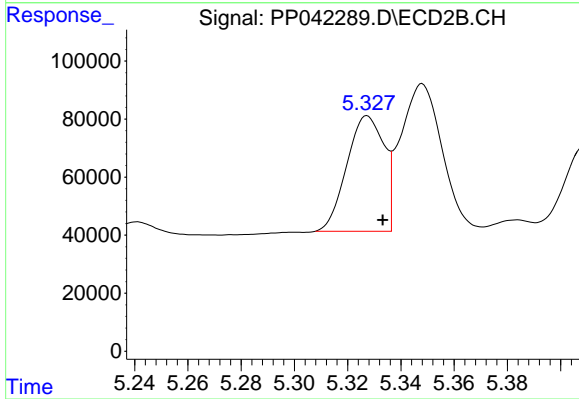
#3 AR-1016-1

R.T.: 6.231 min
 Delta R.T.: -0.002 min
 Response: 213407
 Conc: 480.11 ng/ml

Instrument :
 ECD_P
 ClientSampleId :
 TP-2DMSD

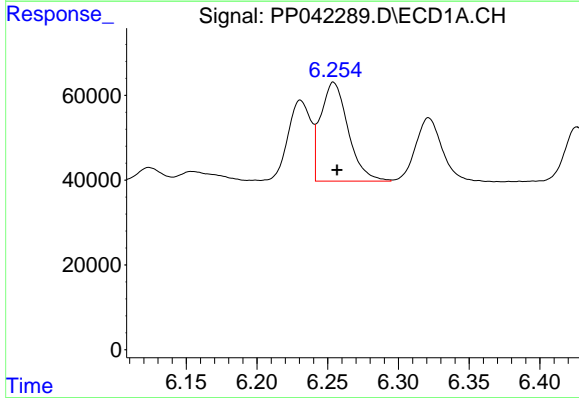
Manual Integrations
 APPROVED

Reviewed By :Ankita Jodhani 12/29/2021
 Supervised By :mohammad ahmed 12/29/2021



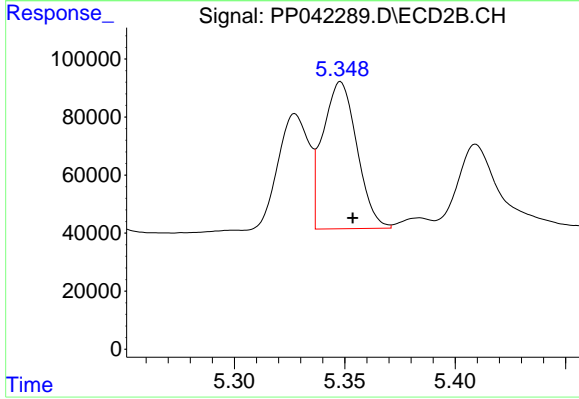
#3 AR-1016-1

R.T.: 5.327 min
 Delta R.T.: -0.006 min
 Response: 396143
 Conc: 432.15 ng/ml m



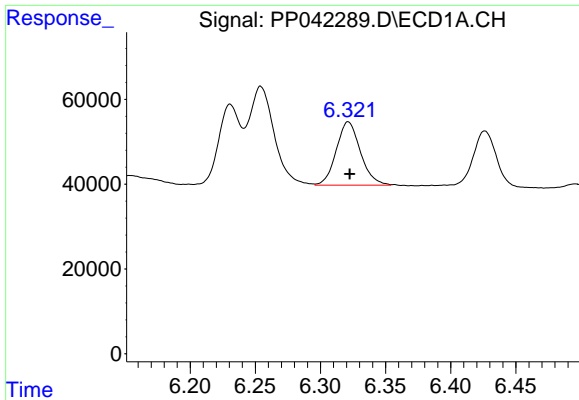
#4 AR-1016-2

R.T.: 6.254 min
 Delta R.T.: -0.003 min
 Response: 313209
 Conc: 473.50 ng/ml m



#4 AR-1016-2

R.T.: 5.348 min
 Delta R.T.: -0.006 min
 Response: 545527
 Conc: 432.96 ng/ml



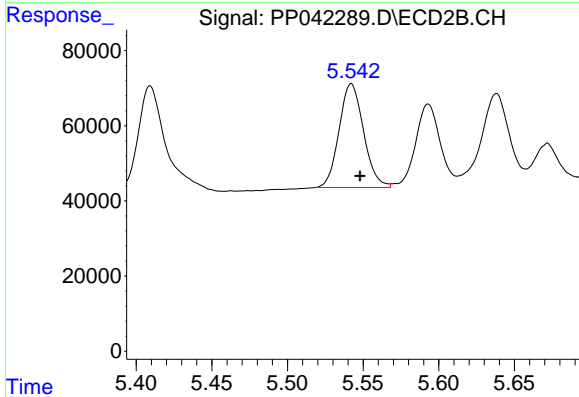
#5 AR-1016-3

R.T.: 6.321 min
 Delta R.T.: -0.002 min
 Response: 193208
 Conc: 473.68 ng/ml m

Instrument :
 ECD_P
 ClientSampleId :
 TP-2DMSD

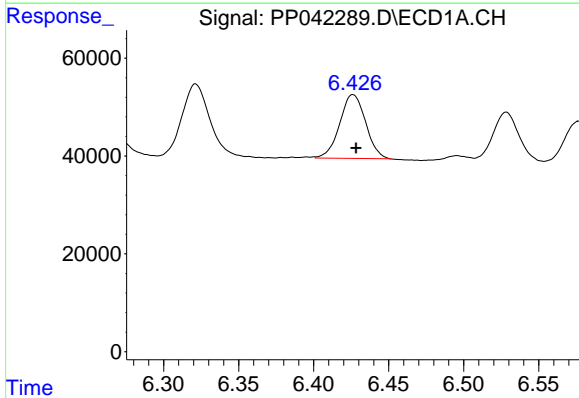
Manual Integrations
 APPROVED

Reviewed By :Ankita Jodhani 12/29/2021
 Supervised By :mohammad ahmed 12/29/2021



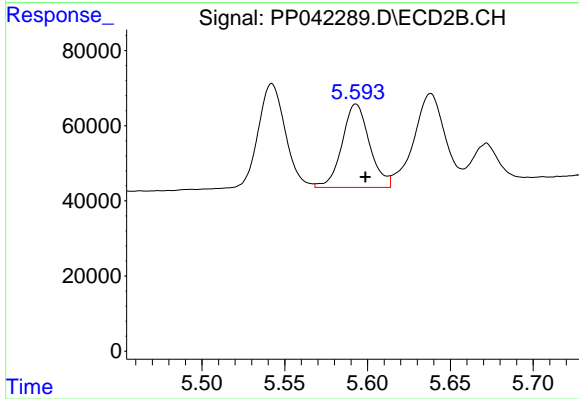
#5 AR-1016-3

R.T.: 5.542 min
 Delta R.T.: -0.006 min
 Response: 311115
 Conc: 443.00 ng/ml m



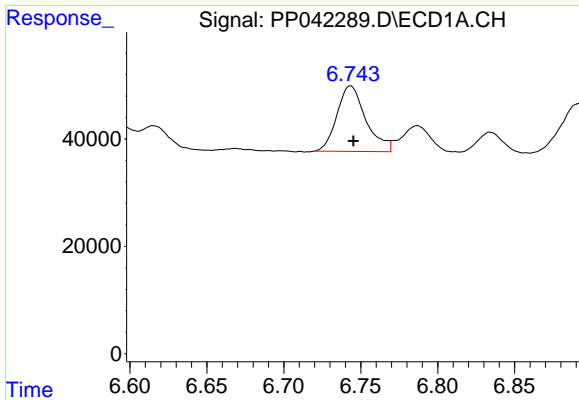
#6 AR-1016-4

R.T.: 6.426 min
 Delta R.T.: -0.003 min
 Response: 156786
 Conc: 481.27 ng/ml m



#6 AR-1016-4

R.T.: 5.593 min
 Delta R.T.: -0.006 min
 Response: 258181
 Conc: 475.44 ng/ml m



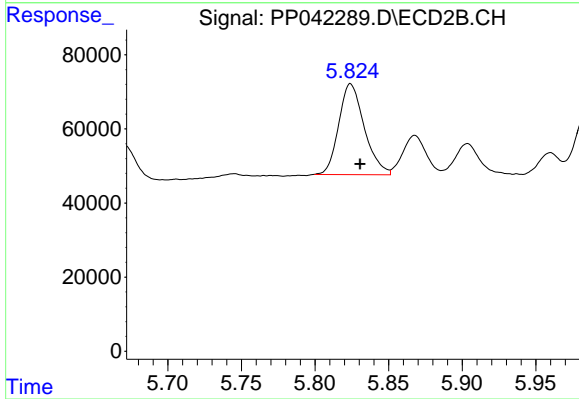
#7 AR-1016-5

R.T.: 6.743 min
 Delta R.T.: -0.002 min
 Response: 159318
 Conc: 464.22 ng/ml

Instrument :
 ECD_P
 ClientSampleId :
 TP-2DMSD

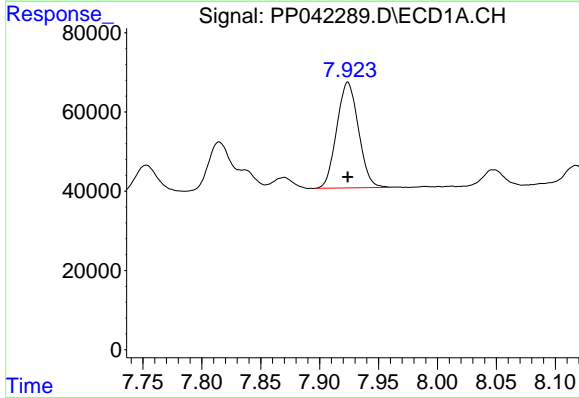
Manual Integrations
 APPROVED

Reviewed By :Ankita Jodhani 12/29/2021
 Supervised By :mohammad ahmed 12/29/2021



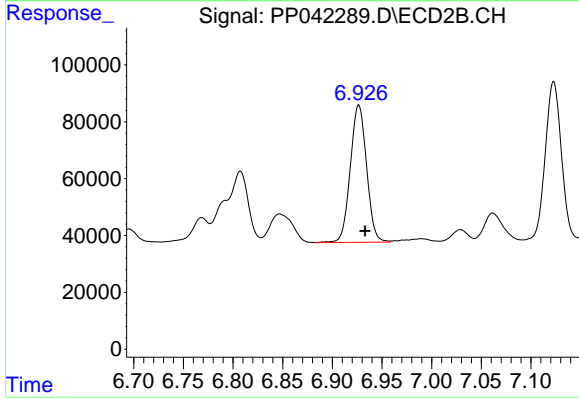
#7 AR-1016-5

R.T.: 5.824 min
 Delta R.T.: -0.007 min
 Response: 297672
 Conc: 456.55 ng/ml m



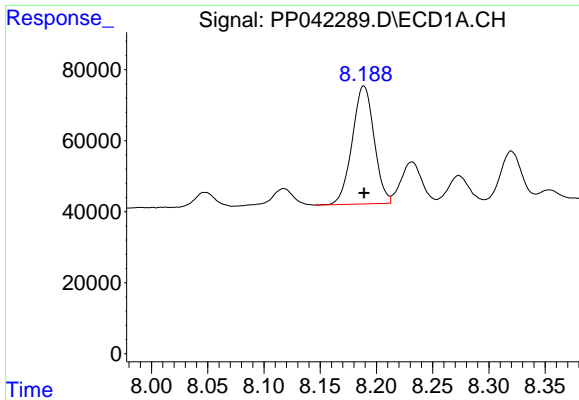
#31 AR-1260-1

R.T.: 7.923 min
 Delta R.T.: 0.000 min
 Response: 342497
 Conc: 577.93 ng/ml m



#31 AR-1260-1

R.T.: 6.927 min
 Delta R.T.: -0.006 min
 Response: 550694
 Conc: 518.18 ng/ml



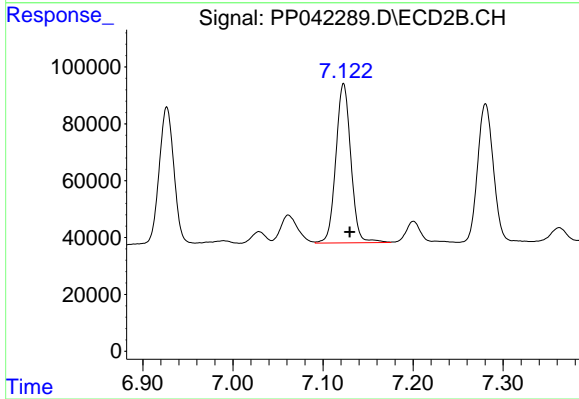
#32 AR-1260-2

R.T.: 8.189 min
 Delta R.T.: 0.000 min
 Response: 450050
 Conc: 582.88 ng/ml

Instrument :
 ECD_P
 ClientSampleId :
 TP-2DMSD

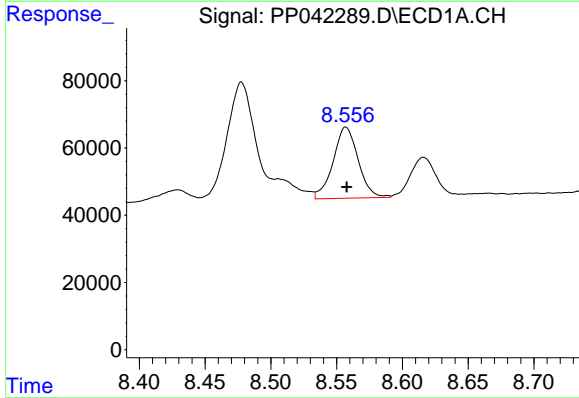
Manual Integrations
 APPROVED

Reviewed By :Ankita Jodhani 12/29/2021
 Supervised By :mohammad ahmed 12/29/2021



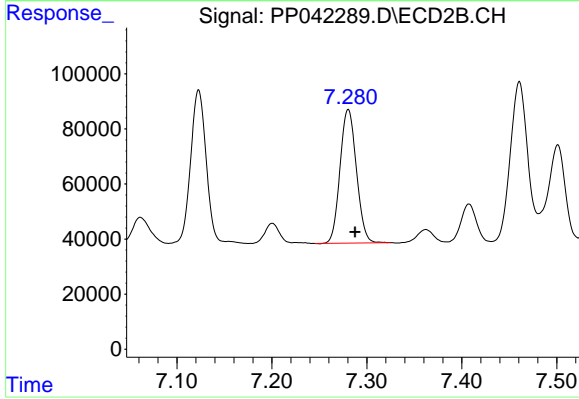
#32 AR-1260-2

R.T.: 7.123 min
 Delta R.T.: -0.007 min
 Response: 648916
 Conc: 525.66 ng/ml



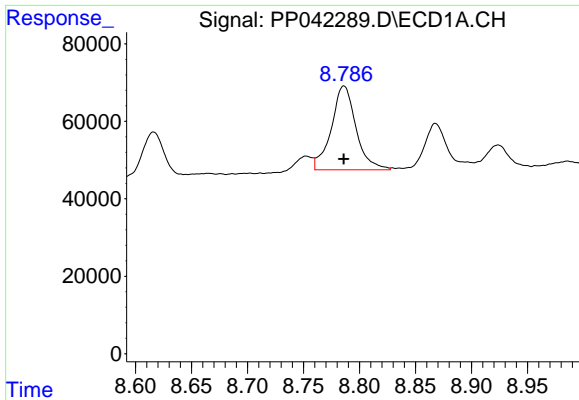
#33 AR-1260-3

R.T.: 8.557 min
 Delta R.T.: 0.000 min
 Response: 281273
 Conc: 543.72 ng/ml



#33 AR-1260-3

R.T.: 7.280 min
 Delta R.T.: -0.007 min
 Response: 581749
 Conc: 434.14 ng/ml



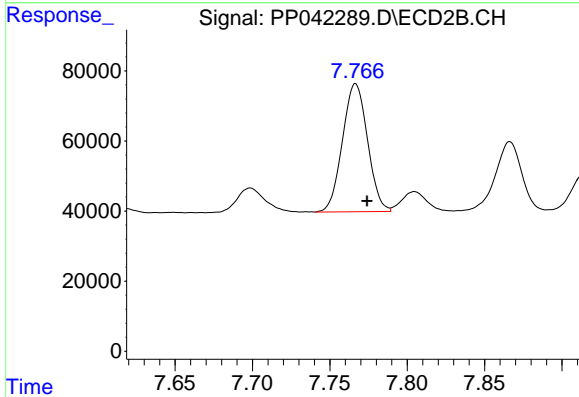
#34 AR-1260-4

R.T.: 8.786 min
 Delta R.T.: 0.000 min
 Response: 331100
 Conc: 571.83 ng/ml

Instrument :
 ECD_P
 ClientSampleId :
 TP-2DMSD

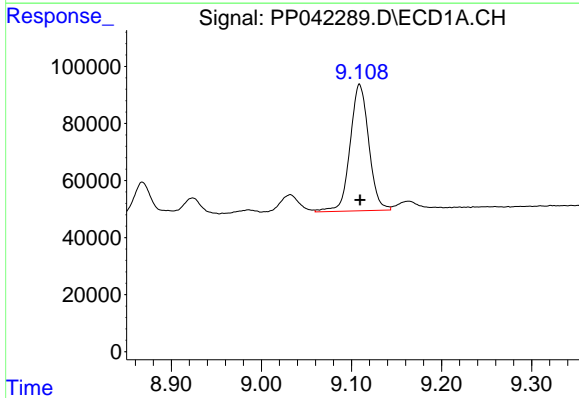
Manual Integrations
 APPROVED

Reviewed By :Ankita Jodhani 12/29/2021
 Supervised By :mohammad ahmed 12/29/2021



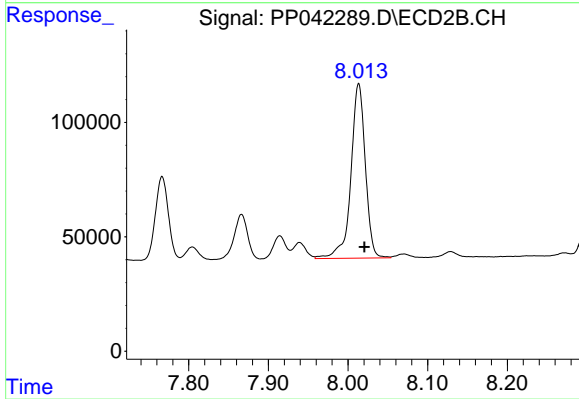
#34 AR-1260-4

R.T.: 7.767 min
 Delta R.T.: -0.007 min
 Response: 411804
 Conc: 461.17 ng/ml



#35 AR-1260-5

R.T.: 9.109 min
 Delta R.T.: 0.000 min
 Response: 639827
 Conc: 546.82 ng/ml



#35 AR-1260-5

R.T.: 8.013 min
 Delta R.T.: -0.007 min
 Response: 961247
 Conc: 499.47 ng/ml