

Data Path : Z:\pestpcbsrv\HPCHEM1\ECD_P\Data\PP122821\
 Data File : PP042305.D
 Signal(s) : Signal #1: ECD1A.CH Signal #2: ECD2B.CH
 Acq On : 29 Dec 2021 00:33
 Operator : AJ\MA
 Sample : M5244-29
 Misc :
 ALS Vial : 42 Sample Multiplier: 1

Instrument :
 ECD_P
ClientSampleId :
 CONC-11D

Manual Integrations
APPROVED
 Reviewed By :Ankita Jodhani 12/29/2021
 Supervised By :mohammad ahmed 12/29/2021

Integration File signal 1: autoint1.e
 Integration File signal 2: autoint2.e
 Quant Time: Dec 29 02:41:09 2021
 Quant Method : Z:\pestpcbsrv\HPCHEM1\ECD_P\methods\PP122321.M
 Quant Title : GC EXTRACTABLES
 QLast Update : Fri Dec 24 23:47:53 2021
 Response via : Initial Calibration
 Integrator: ChemStation 6890 Scale Mode: Small noise peaks clipped

Volume Inj. : 2 µl
 Signal #1 Phase : ZB-MR1 Signal #2 Phase: ZB-MR2
 Signal #1 Info : 30Mx0.32mmx 0.50µ Signal #2 Info : 30M x 0.32mm x 0.25µm

Compound	RT#1	RT#2	Resp#1	Resp#2	ng/ml	ng/ml

System Monitoring Compounds						
1) SA Tetrachlo...	4.920	4.058	305877	540859	23.296	23.681
2) SA Decachlor...	10.914	9.404	350219	509384	28.753	31.499m
Target Compounds						
26) L6 AR-1254-1	7.144	6.205	13609	37614	27.299m	30.072
27) L6 AR-1254-2	7.370	6.363	14754	18939	19.246m	17.403
28) L6 AR-1254-3	7.751	6.788	17609	32311	22.822	19.449
29) L6 AR-1254-4	8.046	7.028	9284	15367	16.686	15.753m
30) L6 AR-1254-5	8.476	7.459	24521	50562	39.159	39.458

(f)=RT Delta > 1/2 Window (#)=Amounts differ by > 25% (m)=manual int.

Data Path : Z:\pestpcbsrv\HPCHEM1\ECD_P\Data\PP122821\
 Data File : PP042305.D
 Signal(s) : Signal #1: ECD1A.CH Signal #2: ECD2B.CH
 Acq On : 29 Dec 2021 00:33
 Operator : AJ\MA
 Sample : M5244-29
 Misc :
 ALS Vial : 42 Sample Multiplier: 1

Instrument :

ECD_P

ClientSampleId :

CONC-11D

Manual Integrations

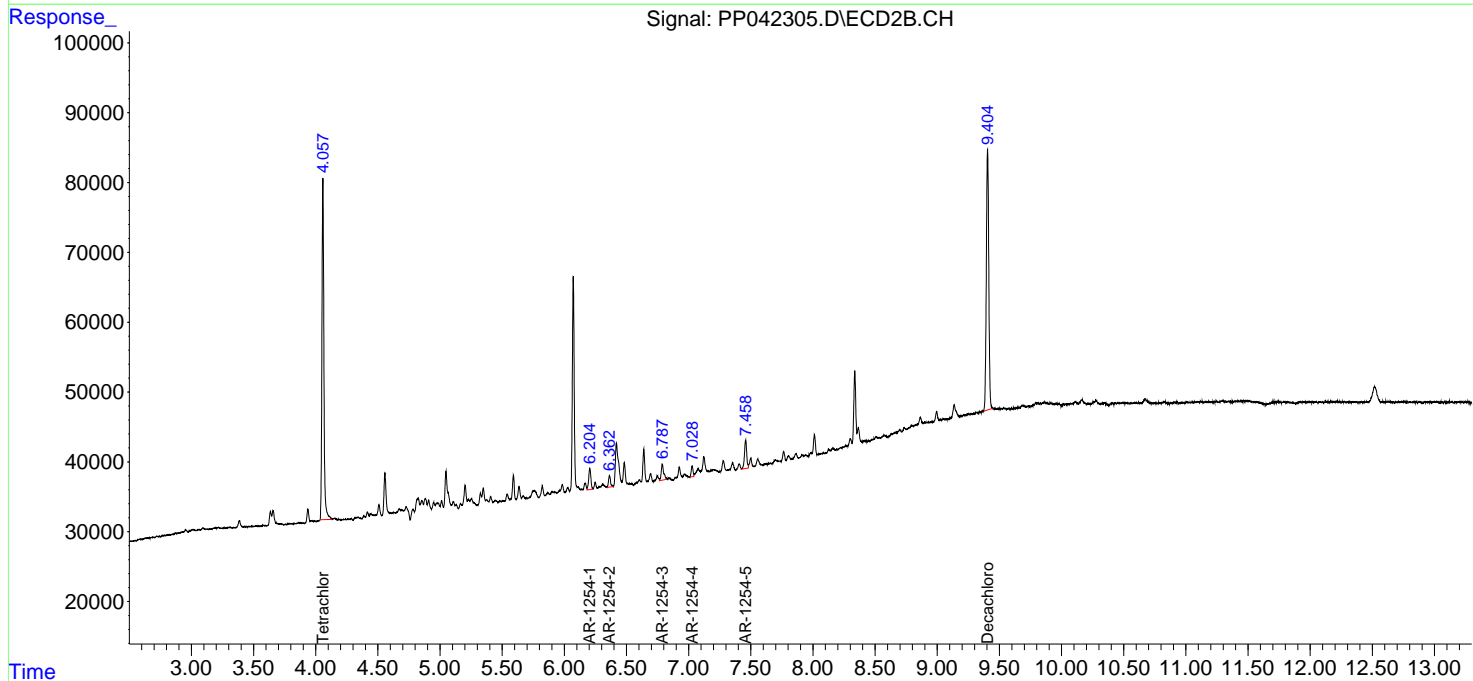
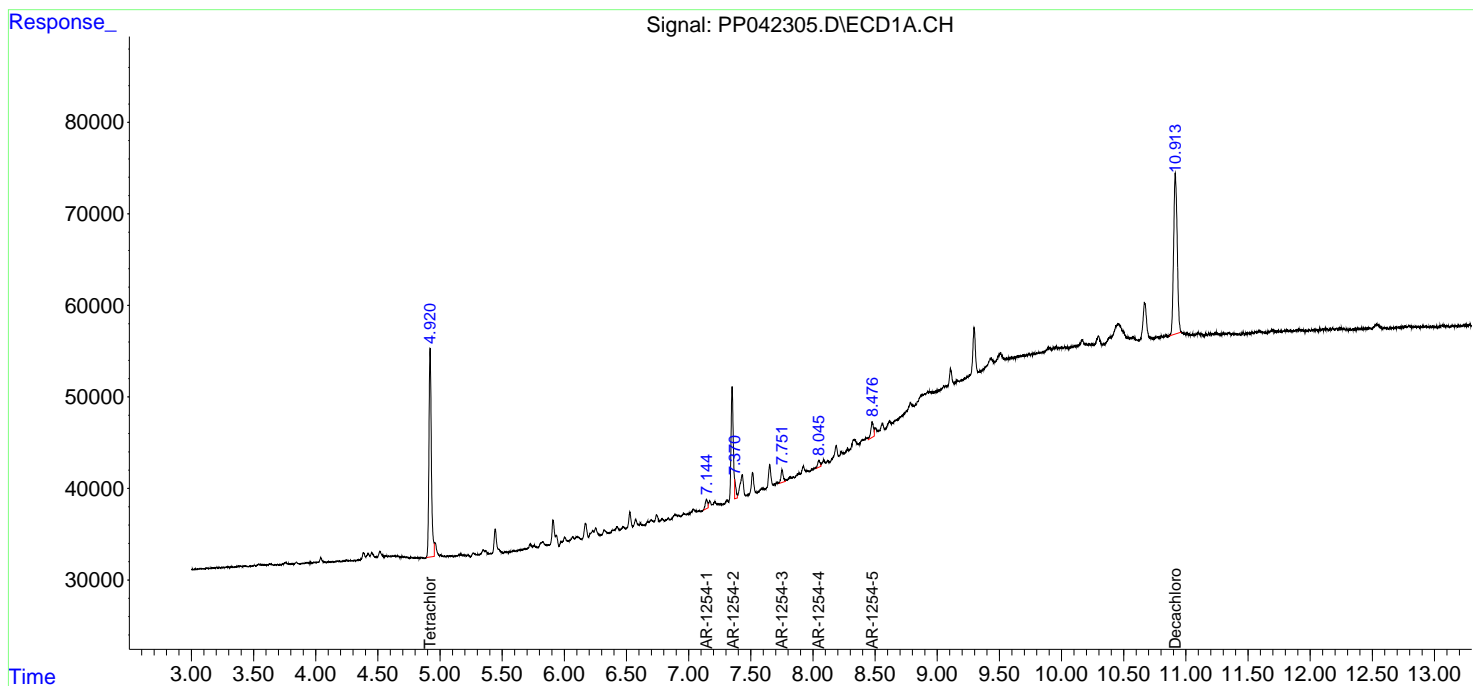
APPROVED

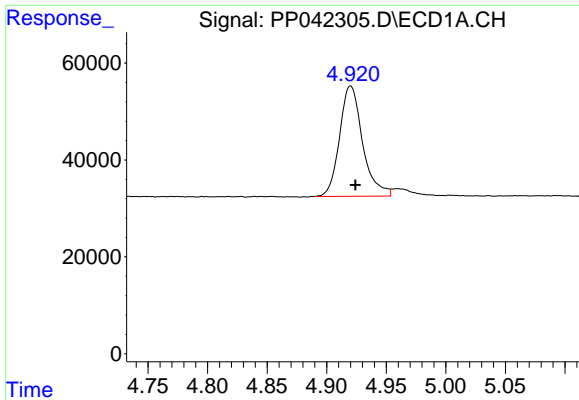
Reviewed By :Ankita Jodhani 12/29/2021

Supervised By :mohammad ahmed 12/29/2021

Integration File signal 1: autoint1.e
 Integration File signal 2: autoint2.e
 Quant Time: Dec 29 02:41:09 2021
 Quant Method : Z:\pestpcbsrv\HPCHEM1\ECD_P\methods\PP122321.M
 Quant Title : GC EXTRACTABLES
 QLast Update : Fri Dec 24 23:47:53 2021
 Response via : Initial Calibration
 Integrator: ChemStation 6890 Scale Mode: Small noise peaks clipped

Volume Inj. : 2 µl
 Signal #1 Phase : ZB-MR1 Signal #2 Phase: ZB-MR2
 Signal #1 Info : 30Mx0.32mmx 0.50µ Signal #2 Info : 30M x 0.32mm x 0.25µm



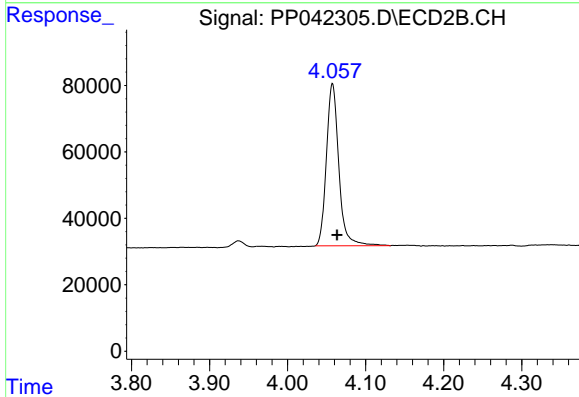


#1 Tetrachloro-m-xylene
 R.T.: 4.920 min
 Delta R.T.: -0.004 min
 Response: 305877
 Conc: 23.30 ng/ml

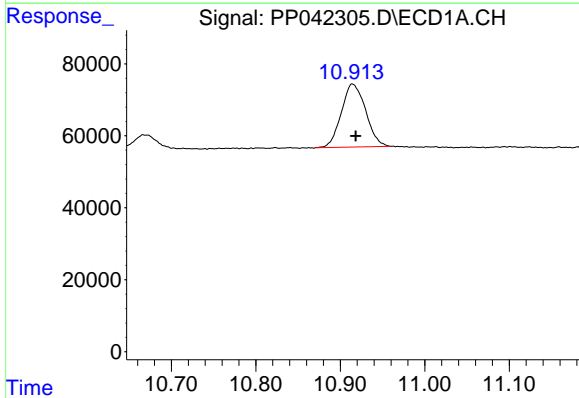
Instrument :
 ECD_P
 ClientSampleId :
 CONC-11D

Manual Integrations
 APPROVED

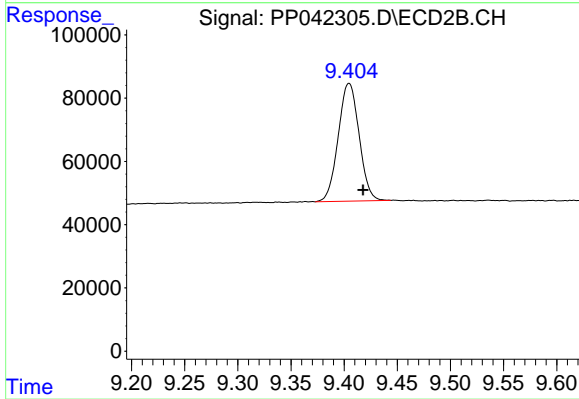
Reviewed By :Ankita Jodhani 12/29/2021
 Supervised By :mohammad ahmed 12/29/2021



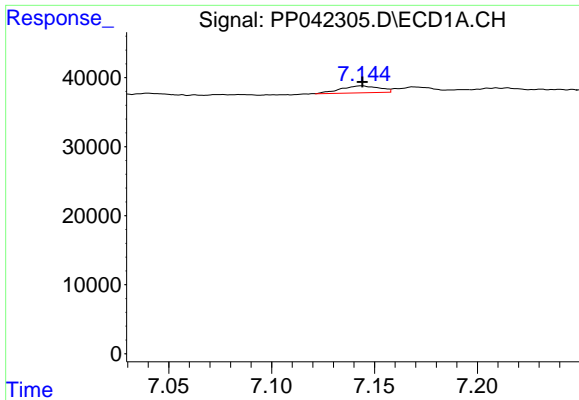
#1 Tetrachloro-m-xylene
 R.T.: 4.058 min
 Delta R.T.: -0.006 min
 Response: 540859
 Conc: 23.68 ng/ml



#2 Decachlorobiphenyl
 R.T.: 10.914 min
 Delta R.T.: -0.004 min
 Response: 350219
 Conc: 28.75 ng/ml



#2 Decachlorobiphenyl
 R.T.: 9.404 min
 Delta R.T.: -0.014 min
 Response: 509384
 Conc: 31.50 ng/ml m

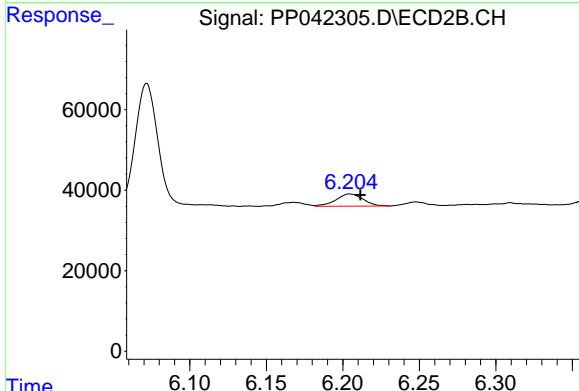


#26 AR-1254-1

R.T.: 7.144 min
 Delta R.T.: 0.000 min
 Response: 13609
 Conc: 27.30 ng/ml

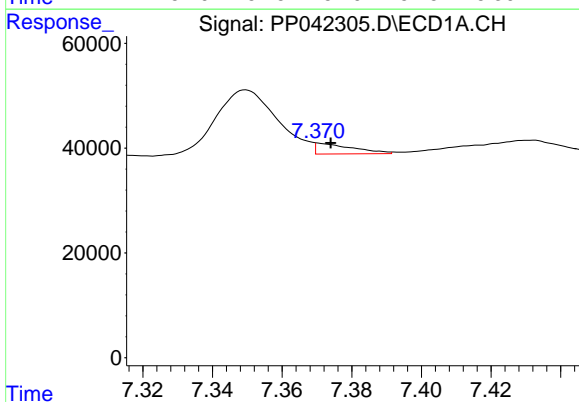
Instrument : ECD_P
 ClientSampleId : CONC-11D

Manual Integrations
APPROVED
 Reviewed By :Ankita Jodhani 12/29/2021
 Supervised By :mohammad ahmed 12/29/2021



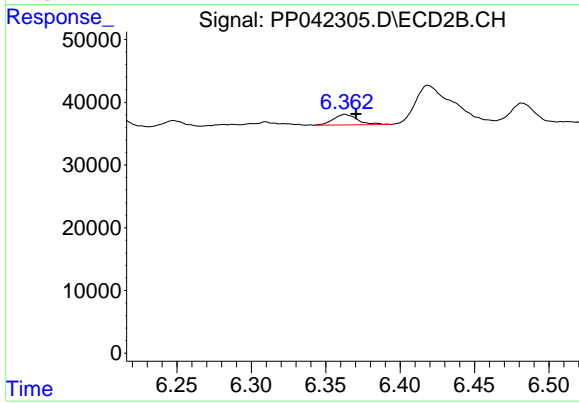
#26 AR-1254-1

R.T.: 6.205 min
 Delta R.T.: -0.007 min
 Response: 37614
 Conc: 30.07 ng/ml



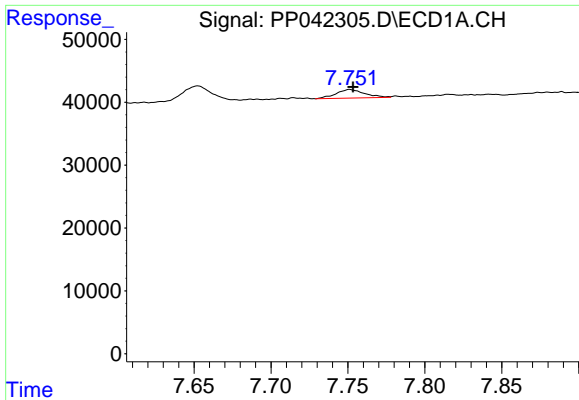
#27 AR-1254-2

R.T.: 7.370 min
 Delta R.T.: -0.004 min
 Response: 14754
 Conc: 19.25 ng/ml m



#27 AR-1254-2

R.T.: 6.363 min
 Delta R.T.: -0.008 min
 Response: 18939
 Conc: 17.40 ng/ml



#28 AR-1254-3

R.T.: 7.751 min
 Delta R.T.: -0.002 min
 Response: 17609
 Conc: 22.82 ng/ml

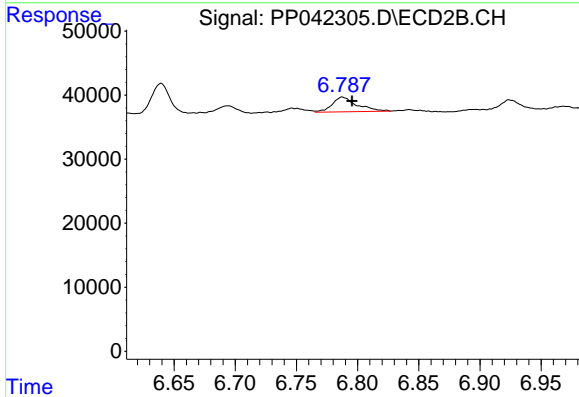
Instrument :

ECD_P

Client SampleId :
 CONC-11D

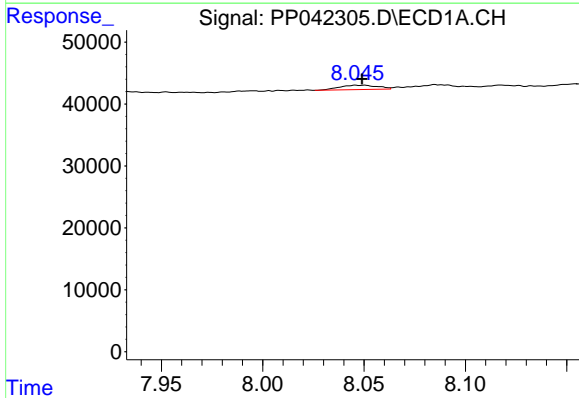
Manual Integrations
 APPROVED

Reviewed By :Ankita Jodhani 12/29/2021
 Supervised By :mohammad ahmed 12/29/2021



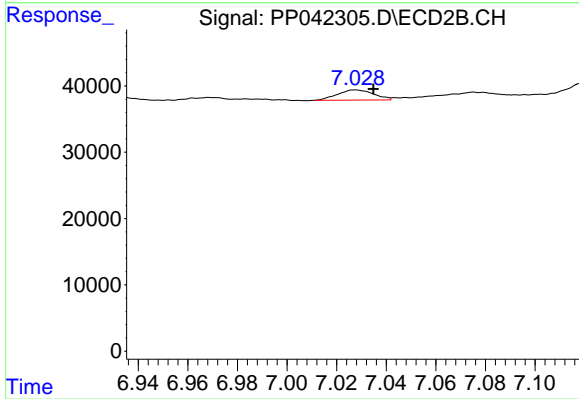
#28 AR-1254-3

R.T.: 6.788 min
 Delta R.T.: -0.008 min
 Response: 32311
 Conc: 19.45 ng/ml



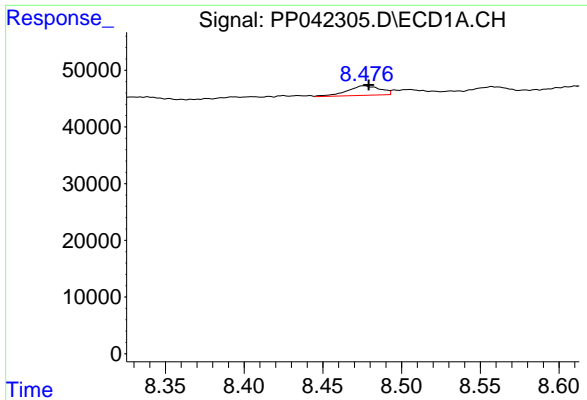
#29 AR-1254-4

R.T.: 8.046 min
 Delta R.T.: -0.003 min
 Response: 9284
 Conc: 16.69 ng/ml



#29 AR-1254-4

R.T.: 7.028 min
 Delta R.T.: -0.007 min
 Response: 15367
 Conc: 15.75 ng/ml m



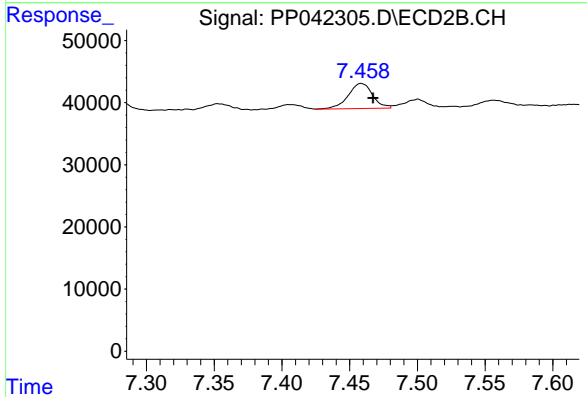
#30 AR-1254-5

R.T.: 8.476 min
 Delta R.T.: -0.003 min
 Response: 24521
 Conc: 39.16 ng/ml

Instrument :
 ECD_P
 ClientSampleId :
 CONC-11D

Manual Integrations
 APPROVED

Reviewed By :Ankita Jodhani 12/29/2021
 Supervised By :mohammad ahmed 12/29/2021



#30 AR-1254-5

R.T.: 7.459 min
 Delta R.T.: -0.009 min
 Response: 50562
 Conc: 39.46 ng/ml